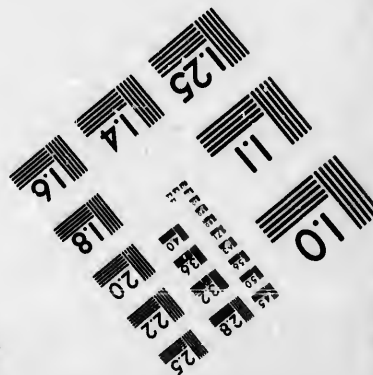
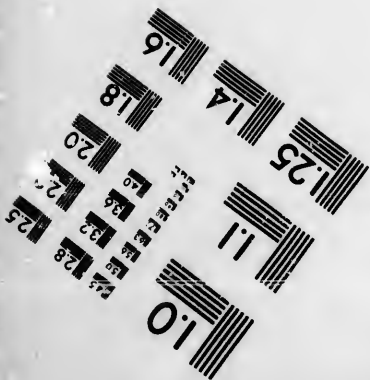
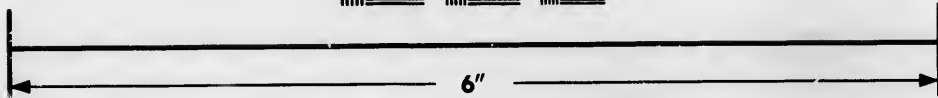
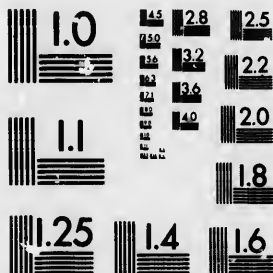


**IMAGE EVALUATION
TEST TARGET (MT-3)**



**Photographic
Sciences
Corporation**

23 WEST MAIN STREET
WEBSTER, N.Y. 14580
(716) 872-4503

14 128
15 128
16 128
18 128
20 128
22 128
25 128

**CIHM/ICMH
Microfiche
Series.**

**CIHM/ICMH
Collection de
microfiches.**



Canadian Institute for Historical Microreproductions / Institut canadien de microreproductions historiques

10
11
12
13
14
15
16
17
18
19
20
21
22
23
24
25

© 1986

Technical and Bibliographic Notes/Notes techniques et bibliographiques

The Institute has attempted to obtain the best original copy available for filming. Features of this copy which may be bibliographically unique, which may alter any of the images in the reproduction, or which may significantly change the usual method of filming, are checked below.

L'institut a microfilmé le meilleur exemplaire qu'il lui a été possible de se procurer. Les détails de cet exemplaire qui sont peut-être uniques du point de vue bibliographique, qui peuvent modifier une image reproduite, ou qui peuvent exiger une modification dans la méthode normale de filmage sont indiqués ci-dessous.

- | | |
|--|--|
| <input type="checkbox"/> Coloured covers/
Couverture de couleur | <input type="checkbox"/> Coloured pages/
Pages de couleur |
| <input type="checkbox"/> Covers damaged/
Couverture endommagée | <input type="checkbox"/> Pages damaged/
Pages endommagées |
| <input type="checkbox"/> Covers restored and/or laminated/
Couverture restaurée et/ou pelliculée | <input checked="" type="checkbox"/> Pages restored and/or laminated/
Pages restaurées et/ou pelliculées |
| <input type="checkbox"/> Cover title missing/
Le titre de couverture manqué | <input checked="" type="checkbox"/> Pages discoloured, stained or foxed/
Pages décolorées, tachetées ou piquées |
| <input type="checkbox"/> Coloured maps/
Cartes géographiques en couleur | <input type="checkbox"/> Pages detached/
Pages détachées |
| <input type="checkbox"/> Coloured ink (i.e. other than blue or black)/
Encre de couleur (i.e. autre que bleue ou noire) | <input checked="" type="checkbox"/> Showthrough/
Transparence |
| <input type="checkbox"/> Coloured plates and/or illustrations/
Planches et/ou illustrations en couleur | <input type="checkbox"/> Quality of print varies/
Qualité inégale de l'impression |
| <input type="checkbox"/> Bound with other material/
Relié avec d'autres documents | <input type="checkbox"/> Includes supplementary material/
Comprend du matériel supplémentaire |
| <input type="checkbox"/> Tight binding may cause shadows or distortion
along interior margin/
La reliure serrée peut causer de l'ombre ou de la
distorsion le long de la marge intérieure | <input type="checkbox"/> Only edition available/
Seule édition disponible |
| <input type="checkbox"/> Blank leaves added during restoration may
appear within the text. Whenever possible, these
have been omitted from filming/
Il se peut que certaines pages blanches ajoutées
lors d'une restauration apparaissent dans le texte,
mais, lorsque cela était possible, ces pages n'ont
pas été filmées. | <input type="checkbox"/> Pages wholly or partially obscured by errata
slips, tissues, etc., have been refilmed to
ensure the best possible image/
Les pages totalement ou partiellement
obscurcies par un feuillet d'errata, une pelure,
etc., ont été filmées à nouveau de façon à
obtenir la meilleure image possible. |
| <input checked="" type="checkbox"/> Additional comments: [Printed ephemera] 1 sheet (verso blank)
Commentaires supplémentaires: | |

This item is filmed at the reduction ratio checked below/
Ce document est filmé au taux de réduction indiqué ci-dessous.

10X	12X	14X	16X	18X	20X	22X	24X	26X	28X	30X	32X
									✓		

The copy filmed here has been reproduced thanks to the generosity of:

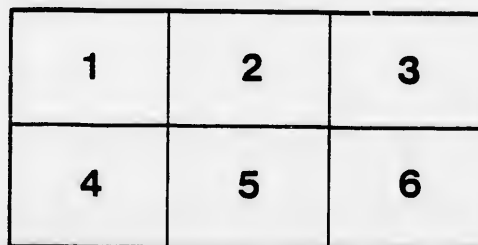
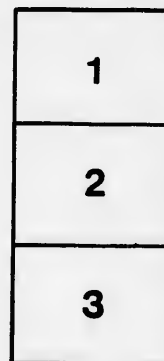
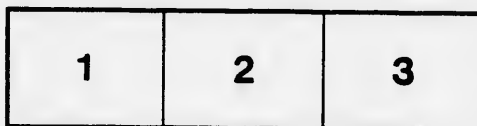
New Brunswick Museum
Saint John

The images appearing here are the best quality possible considering the condition and legibility of the original copy and in keeping with the filming contract specifications.

Original copies in printed paper covers are filmed beginning with the front cover and ending on the last page with a printed or illustrated impression, or the back cover when appropriate. All other original copies are filmed beginning on the first page with a printed or illustrated impression, and ending on the last page with a printed or illustrated impression.

The last recorded frame on each microfiche shall contain the symbol \rightarrow (meaning "CONTINUED"), or the symbol ∇ (meaning "END"), whichever applies.

Maps, plates, charts, etc., may be filmed at different reduction ratios. Those too large to be entirely included in one exposure are filmed beginning in the upper left hand corner, left to right and top to bottom, as many frames as required. The following diagrams illustrate the method:



L'exemplaire filmé fut reproduit grâce à la générosité de:

New Brunswick Museum
Saint John

Les images suivantes ont été reproduites avec le plus grand soin, compte tenu de la condition et de la netteté de l'exemplaire filmé, et en conformité avec les conditions du contrat de filmage.

Les exemplaires originaux dont la couverture en papier est imprimée sont filmés en commençant par le premier plat et en terminant soit par la dernière page qui comporte une empreinte d'impression ou d'illustration, soit par le second plat, selon le cas. Tous les autres exemplaires originaux sont filmés en commençant par la première page qui comporte une empreinte d'impression ou d'illustration et en terminant par la dernière page qui comporte une telle empreinte.

Un des symboles suivants apparaîtra sur la dernière image de chaque microfiche, selon le cas: le symbole \rightarrow signifie "A SUIVRE", le symbole ∇ signifie "FIN".

Les cartes, planches, tableaux, etc., peuvent être filmés à des taux de réduction différents. Lorsque le document est trop grand pour être reproduit en un seul cliché, il est filmé à partir de l'angle supérieur gauche, de gauche à droite, et de haut en bas, en prenant le nombre d'images nécessaires. Les diagrammes suivants illustrent la méthode.

LECTURE.

On Friday Evening, Nov. 28,
In Smith's Hall, Prince Wm. Street,

By the distinguished and Popular Lectress,

MISS HELEN M. DRESSER,

Who has within the last four years lectured to over 1000 audiences, on

Her Journey to Salt Lake City—THE MORMONS—Their Numbers—Strength—Manners—Forms of Worship—Schools—Devotion to their False Religion—The Escape of her Father's Family from Utah, over 1400 miles, mostly on foot, &c., &c.

These Lectures have often, by request of ministers of almost every denomination, been given from their pulpits on the Sabbath; for although replete with thrilling incidents and fraught with instruction, they are of most practical missionary character—combatting as they do the monstrous heresy and imposition that annually carries over 6000 persons to the domains of Brigham Young.

The Press says of her Lectures:

Louisville Journal—A prodigy of intellectual strength—Her Lectures in this City were crowded by the literary and fashionable.

New Orleans Delta—This young girl spoke to over 2,000 persons—She is a splendid speaker, strong writer, brimful of sparkling wit, and engaged in a good cause.

Washington, D. C., Star—Miss Dresser is a favorite in Washington, from the President down—Her Lectures in the Baptist Church are crowded.

Horace Greeley says—The most truly self-educated and self-reliant woman I ever met.

Hamilton, C. W., Times—Miss Dresser is not only a noble and beautiful young lady, and as such popular, but her lectures are pronounced by all who heard them, as the most instructive and interesting ever given in this city.

Toronto Globe—Miss Dresser's Lectures were attended by the best intellects of the city.

Montreal Herald—Miss Dresser is certainly the most natural reader we ever heard—She is a remarkable woman for one so young.

Tickets of admission 25 cents; Gallery 30 cents.
Doors open at 7 o'clock; Lecture to commence at 8.

PRESENTS AND GIFTS!

These are the lowest prices of admission to Miss Dresser's Lectures in the cities of the States and Canada, but in order to induce attendance, every person who buys a ticket of admission will be entitled to a PRESENT which is worth (retail price) the cost of ticket. Every person buying a ticket to the Lecture will at once receive

A PRIZE

from a great variety of useful and ornamental goods:—Ladies' Pattern, Print and SILK DRESSES, FURS, FANCY GOODS and JEWELRY; **FOUR WATCHES**, viz., Silver Hunting Case Detached Lever, Gents' Open-faced Plated, Ladies' Hunting Case (small size) Gold Plated, Ladies' Hunting Case, Gold; Bracelets, Lockets, Chains, Brooches, &c., &c., &c.—Also a splendid

SEWING MACHINE,

retail price \$40!

REMEMBER!—Everybody gets a Present, and a Ticket to a witty, instructive, and interesting Lecture—one that will do good—for the small sum of 25 cents.

EVERY PERSON who buys a Ticket for 25 cents, can, if he or she prefer, have as a gift, 12 sheets of superfine Letter Paper, 12 Envelopes, 3 Steel Pens and Holder, Lead Pencil, and one Engraving of American Scenery, worth at least 2s., retail price.

Tickets and Presents can be procured every day at St. John Hotel, and every afternoon and evening at J. & A. McMillan's, 78 Prince Wm. Street.

