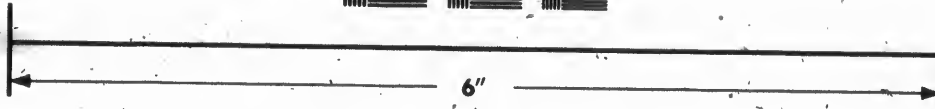
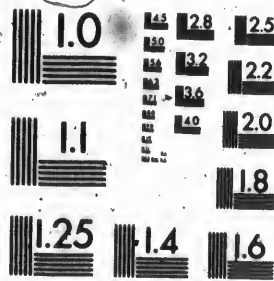
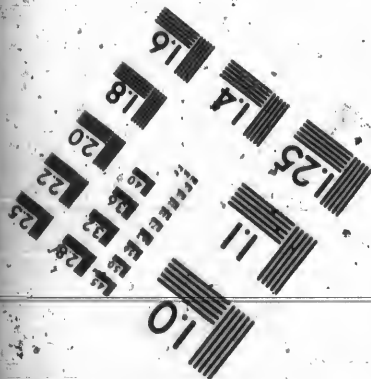


**IMAGE EVALUATION
TEST TARGET (MT-3)**



Canada



**Photographic
Sciences
Corporation**

23 WEST MAIN STREET
WEBSTER, N.Y. 14580
(716) 872-4503

15 12.8 12.5
13 12
14 11
16 10
18 9
20
22
24
26
28
30
32
34
36
38
40
42
44
46
48
50
52
54
56
58
60
62
64
66
68
70
72
74
76
78
80
82
84
86
88
90
92
94
96
98
100

**CIHM/ICMH
Microfiche
Series.**

**CIHM/ICMH
Collection de
microfiches.**



Canadian Institute for Historical Microreproductions / Institut canadien de microreproductions historiques

10
01

© 1986

Technical and Bibliographic Notes/Notes techniques et bibliographiques

The Institute has attempted to obtain the best original copy available for filming. Features of this copy which may be bibliographically unique, which may alter any of the images in the reproduction, or which may significantly change the usual method of filming, are checked below.

L'Institut a microfilmé le meilleur exemplaire qu'il lui a été possible de se procurer. Les détails de cet exemplaire qui sont peut-être uniques du point de vue bibliographique, qui peuvent modifier une image reproduite, ou qui peuvent exiger une modification dans la méthode normale de filmage sont indiqués ci-dessous.

Coloured covers/
Couverture de couleur

Covers damaged/
Couverture endommagée

Covers restored and/or laminated/
Couverture restaurée et/ou pelliculée

Cover title missing/
Le titre de couverture manque

Coloured maps/
Cartes géographiques en couleur

Coloured ink (i.e. other than blue or black)/
Encre de couleur (i.e. autre que bleue ou noire)

Coloured plates and/or illustrations/
Planches et/ou illustrations en couleur

Bound with other material/
Relié avec d'autres documents

Tight binding may cause shadows or distortion
along interior margin/
La reliure serrée peut causer de l'ombre ou de la
distorsion le long de la marge intérieure

Blank leaves added during restoration may
appear within the text. Whenever possible, these
have been omitted from filming/
Il se peut que certaines pages blanches ajoutées
lors d'une restauration apparaissent dans le texte,
mais, lorsque cela était possible, ces pages n'ont
pas été filmées.

Additional comments:/
Commentaires supplémentaires:

[Printed ephemera] 1 sheet (verso blank)
This copy is a photoreproduction.

Coloured pages/
Pages de couleur

Pages damaged/
Pages endommagées

Pages restored and/or laminated/
Pages restaurées et/ou pelliculées

Pages discoloured, stained or foxed/
Pages décolorées, tachetées ou piquées

Pages detached/
Pages détachées

Showthrough/
Transparence

Quality of print varies/
Qualité inégale de l'impression.

Includes supplementary material/
Comprend du matériel supplémentaire

Only edition available/
Seule édition disponible

Pages wholly or partially obscured by errata
slips, tissues, etc., have been refilmed to
ensure the best possible image/
Les pages totalement ou partiellement
obscurcies par un feuillet d'errata, une pelure,
etc., ont été filmées à nouveau de façon à
obtenir la meilleure image possible.

This item is filmed at the reduction ratio checked below/
Ce document est filmé au taux de réduction indiqué ci-dessous.

10X	14X	18X	22X	26X	30X
<input type="checkbox"/>	<input type="checkbox"/>	<input type="checkbox"/>	<input type="checkbox"/>	<input checked="" type="checkbox"/>	<input type="checkbox"/>
12X	16X	20X	24X	28X	32X

exemplaire
rer. Les détails
re uniques du
peuvent modifier
ent exiger une
nale de filmage

ted/
ulées

foxed/
pu piquées

ial/
mentaire

ured by errata
refilmed to
/llement
ats, une pelure,
de façon à
sible.

00X

32X

The copy filmed here has been reproduced thanks to the generosity of:

D. B. Weldon Library
University of Western Ontario
(Regional History Room)

The images appearing here are the best quality possible considering the condition and legibility of the original copy and in keeping with the filming contract specifications.

Original copies in printed paper covers are filmed beginning with the front cover and ending on the last page with a printed or illustrated impression, or the back cover when appropriate. All other original copies are filmed beginning on the first page with a printed or illustrated impression, and ending on the last page with a printed or illustrated impression.

The last recorded frame on each microfiche shall contain the symbol \rightarrow (meaning "CONTINUED"), or the symbol ∇ (meaning "END"), whichever applies.

Maps, plates, charts, etc., may be filmed at different reduction ratios. Those too large to be entirely included in one exposure are filmed beginning in the upper left hand corner, left to right and top to bottom, as many frames as required. The following diagrams illustrate the method:



L'exemplaire filmé fut reproduit grâce à la générosité de:

D. B. Weldon Library
University of Western Ontario
(Regional History Room)

Les images suivantes ont été reproduites avec le plus grand soin, compte tenu de la condition et de la netteté de l'exemplaire filmé, et en conformité avec les conditions du contrat de filmage.

Les exemplaires originaux dont la couverture en papier est imprimée sont filmés en commençant par le premier plat et en terminant soit par la dernière page qui comporte une empreinte d'impression ou d'illustration, soit par le second plat, selon le cas. Tous les autres exemplaires originaux sont filmés en commençant par la première page qui comporte une empreinte d'impression ou d'illustration et en terminant par la dernière page qui comporte une telle empreinte.

Un des symboles suivants apparaîtra sur la dernière image de chaque microfiche, selon le cas: le symbole \rightarrow signifie "A SUIVRE", le symbole ∇ signifie "FIN".

Les cartes, planches, tableaux, etc., peuvent être filmés à des taux de réduction différents. Lorsque le document est trop grand pour être reproduit en un seul cliché, il est filmé à partir de l'angle supérieur gauche, de gauche à droite, et de haut en bas, en prenant le nombre d'images nécessaire. Les diagrammes suivants illustrent la méthode.

IN CHAMBER

Thomas Haskett,

BETWEEN

AND

Richard J. Talbot, John H. Talbot, Edward
Anna M. Forde, his wife, (by Bill); and G

~~Master's Office~~

PURSUANT to **THE DECREE** made in this
October, in the year of our Lord one thousand eight hundred and
Esq., Master of this Court at London, the undermen

PUBLIC

AT THE

AMCERY

BETWEEN

AND

Plaintiff,

Edward J. Talbot, Stewart King Forde, and
); and George Moncrieff, (made a party in the
DEFENDANTS.

de in this Cause, dated the twenty-second day of
hundred and sixty-six, and with the approbation of James Shanley,
the undermentioned lands and tenements will be sold at

AUCTION

AT THE

PUBLIC

AT THE

Chambers of the said Master, on Ridge

AT TWO O'CLOCK

On Saturday, 3

In one lot, consisting of a part of Lot Number Sixteen in the Fourth Concession of the Towns limit of the road allowance between the Third and Fourth Concessions, at the distance of two Lot Sixteen, aforesaid; thence North twenty-one degrees, thirty minutes west, thirty-nine chains, eleven chains; thence South twenty one degrees, thirty minutes east, thirty nine chains, the Gravel Road nine chains and fifty-five links, more or less, to the road allowance between the minutes east, along the Northern limit of the said road allowance, six chains, twenty-five links forty-two acres, be the same more or less.

The above described property is situated on the London Proof-Line Road, about one mile purposes.

The land will be sold subject to the inchoate right of dower of a married woman, particular

The purchase money, less the amount of the deposit of ten per cent., which is payable at or Agency Office in the City of Toronto, with interest at the rate of six per cent., on or before the

The conditions of sale are the standing conditions of the Court of Chancery.

Particulars and conditions of sale to be had at the Law Office of Messrs. Geary and Moncrieff

Dated this second day of July, A.D. 1867.

J.

Messrs. GEARY & MONCRIEFF

London, July 4, 1867.

Vendor's Solicitors.

PRINTED AT THE FREE PRESS OFFICE

AND

AT THE

on Ridout St., in the City of London,
O'CLOCK, P. M.,

y, 3rd Aug. '67,

ession of the Township of London, in the County of Middlesex, beginning at the northern
the distance of twenty-five chains and and fifty links easterly from the South-west angle of
west, thirty-nine chains, ninety-two links: thence South sixty-eight degrees, thirty minutes
~~t, thirty-two chains, fifty links, more or less, to the Gravel Road; thence South easterly along~~
allowance between the Third and Fourth Concessions; thence North sixty-eight degrees, thirty
ns, twenty-five links, more or less, to the place of beginning, containing by admeasurement

oad, about one mile from the city of London, and is well suited for Garden, Nursery or Farm

ried woman, particulars of which will be given by the Solicitors undersigned.

which is payable at the time of sale to be paid into the Commercial Bank at its Branch
cent., on or before the second day of September, A.D. 1867.

ncery.
a. Geary and Moncrieff, in the City of London, and at the Chambers of the said Master.

J. SHANLY,
Master in Chancery.

F.F.
r's Solicitors.

