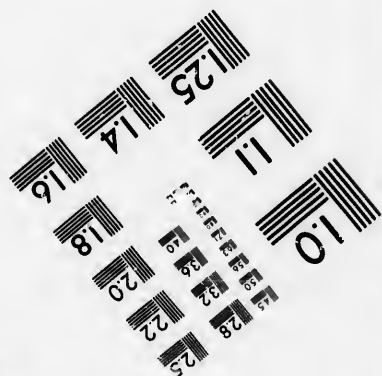
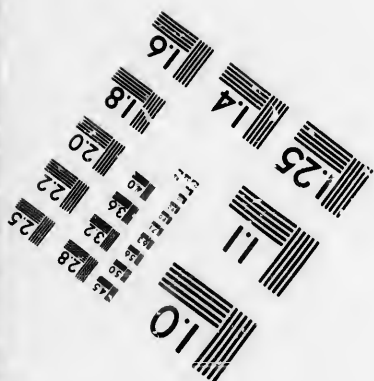
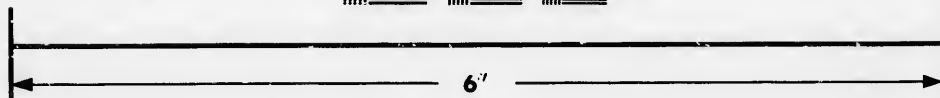
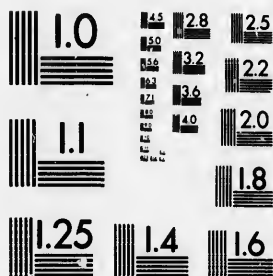


**IMAGE EVALUATION
TEST TARGET (MT-3)**



**Photographic
Sciences
Corporation**

23 WEST MAIN STREET
WEBSTER, N.Y. 14580
(716) 872-4503



**CIHM/ICMH
Microfiche
Series.**

**CIHM/ICMH
Collection de
microfiches.**



Canadian Institute for Historical Microreproductions / Institut canadien de microreproductions historiques



© 1986

Technical and Bibliographic Notes/Notes techniques et bibliographiques

The Institute has attempted to obtain the best original copy available for filming. Features of this copy which may be bibliographically unique, which may alter any of the images in the reproduction, or which may significantly change the usual method of filming, are checked below.

L'Institut a microfilmé le meilleur exemplaire qu'il lui a été possible de se procurer. Les détails de cet exemplaire qui sont peut-être uniques du point de vue bibliographique, qui peuvent modifier une image reproduite, ou qui peuvent exiger une modification dans la méthode normale de filmage sont indiqués ci-dessous.

- | | |
|--|--|
| <input type="checkbox"/> Coloured covers/
Couverture de couleur | <input type="checkbox"/> Coloured pages/
Pages de couleur |
| <input type="checkbox"/> Covers damaged/
Couverture endommagée | <input type="checkbox"/> Pages damaged/
Pages endommagées |
| <input type="checkbox"/> Covers restored and/or laminated/
Couverture restaurée et/ou pelliculée | <input type="checkbox"/> Pages restored and/or laminated/
Pages restaurées et/ou pelliculées |
| <input type="checkbox"/> Cover title missing/
Le titre de couverture manque | <input checked="" type="checkbox"/> Pages discoloured, stained or foxed/
Pages décolorées, tachetées ou piquées |
| <input type="checkbox"/> Coloured maps/
Cartes géographiques en couleur | <input type="checkbox"/> Pages detached/
Pages détachées |
| <input type="checkbox"/> Coloured ink (i.e. other than blue or black)/
Encre de couleur (i.e. autre que bleue ou noire) | <input checked="" type="checkbox"/> Showthrough/
Transparence |
| <input type="checkbox"/> Coloured plates and/or illustrations/
Planches et/ou illustrations en couleur | <input type="checkbox"/> Quality of print varies/
Qualité inégale de l'impression |
| <input type="checkbox"/> Bound with other material/
Relié avec d'autres documents | <input type="checkbox"/> Includes supplementary material/
Comprend du matériel supplémentaire |
| <input type="checkbox"/> Tight binding may cause shadows or distortion
along interior margin/
La reliure serrée peut causer de l'ombre ou de la
distorsion le long de la marge intérieure | <input type="checkbox"/> Only edition available/
Seule édition disponible |
| <input type="checkbox"/> Blank leaves added during restoration may
appear within the text. Whenever possible, these
have been omitted from filming/
Il se peut que certaines pages blanches ajoutées
lors d'une restauration apparaissent dans le texte,
mais, lorsque cela était possible, ces pages n'ont
pas été filmées. | <input type="checkbox"/> Pages wholly or partially obscured by errata
slips, tissues, etc., have been refilmed to
ensure the best possible image/
Les pages totalement ou partiellement
obscurcies par un feuillet d'errata, une pelure,
etc., ont été filmées à nouveau de façon à
obtenir la meilleure image possible. |
| <input checked="" type="checkbox"/> Additional comments:/ | [Printed ephemera] 1 sheet (verso blank) |
| Commentaires supplémentaires: | |

This item is filmed at the reduction ratio checked below/
Ce document est filmé au taux de réduction indiqué ci-dessous.

10X	12X	14X	16X	18X	20X	22X	24X	26X	28X	30X	32X
									/		

The copy filmed here has been reproduced thanks to the generosity of:

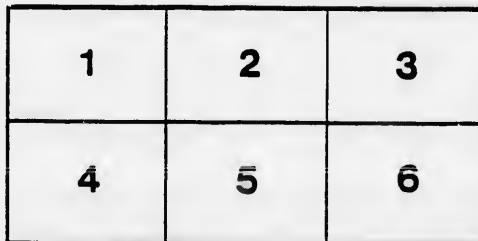
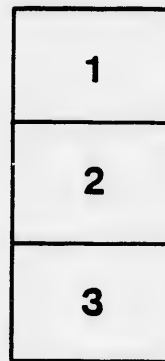
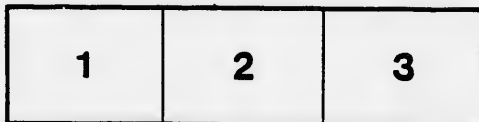
D. B. Weldon Library
University of Western Ontario
(Regional History Room)

The images appearing here are the best quality possible considering the condition and legibility of the original copy and in keeping with the filming contract specifications.

Original copies in printed paper covers are filmed beginning with the front cover and ending on the last page with a printed or illustrated impression, or the back cover when appropriate. All other original copies are filmed beginning on the first page with a printed or illustrated impression, and ending on the last page with a printed or illustrated impression.

The last recorded frame on each microfiche shall contain the symbol \rightarrow (meaning "CONTINUED"), or the symbol ∇ (meaning "END"), whichever applies.

Maps, plates, charts, etc., may be filmed at different reduction ratios. Those too large to be entirely included in one exposure are filmed beginning in the upper left hand corner, left to right and top to bottom, as many frames as required. The following diagrams illustrate the method:



L'exemplaire filmé fut reproduit grâce à la générosité de:

D. B. Weldon Library
University of Western Ontario
(Regional History Room)

Les images suivantes ont été reproduites avec le plus grand soin, compte tenu de la condition et de la netteté de l'exemplaire filmé, et en conformité avec les conditions du contrat de filmage.

Les exemplaires originaux dont la couverture en papier est imprimée sont filmés en commençant par le premier plat et en terminant soit par la dernière page qui comporte une empreinte d'impression ou d'illustration, soit par le second plat, selon le cas. Tous les autres exemplaires originaux sont filmés en commençant par la première page qui comporte une empreinte d'impression ou d'illustration et en terminant par la dernière page qui comporte une telle empreinte.

Un des symboles suivants apparaîtra sur la dernière image de chaque microfiche, selon le cas: le symbole \rightarrow signifie "A SUIVRE", le symbole ∇ signifie "FIN".

Les cartes, planches, tableaux, etc., peuvent être filmés à des taux de réduction différents. Lorsque le document est trop grand pour être reproduit sur un seul cliché, il est filmé à partir de l'angle supérieur gauche, de gauche à droite, et de haut en bas, en prenant le nombre d'images nécessaire. Les diagrammes suivants illustrent la méthode.

GRAND TRUNK RAILWAY SYSTEM

OFFICE OF GENERAL SUPERINTENDENT

MONTREAL, April 1st, 1898.

CIRCULAR No. 23.

To insure improved efficiency in train service and provide an additional safeguard against accident, affording greater security to life and property, this Company will inaugurate a system of watch inspection, EFFECTIVE MAY 1ST, 1898, and employees designated below are required, on and after that date, to submit their watches for quarterly examination and for weekly comparison with standard time to the various Inspectors, who have been appointed for the purpose, and will be under the general supervision of Prof. C. H. McLeod, of McGill University, Montreal, who has been appointed Superintendent of Time Service and Watch Inspection.

All train and enginemen must submit their watches to Local Inspectors as required by this rule.

The minimum standard of excellence adopted by this Company, for watches, is of a grade equal to what is known among American movements as seventeen (17) jewel, patent regulator, adjusted to temperature, the variations of which must not exceed 30 seconds per week.

Each employee designated will apply immediately, and every three months hereafter, to his superior officer for a blank certificate and order for examination, which he must take, together with his watch, to the Local Inspector, who will, if the watch is satisfactory, sign the certificate and forward the same to the officer under whom the person is employed, free of charge to such employee. If the watch is below the required standard it will be rejected, and the officer in charge promptly advised. Any watch so rejected cannot be used in service, nor passed upon by another inspector except upon order of the Superintendent of Time Service. Employees, where no Inspector is located, may send their watches, together with blank certificate, to the nearest Local Inspector.

IN ADDITION TO THE QUARTERLY EXAMINATION, TRAINMEN AND ENGINEMEN MUST SUBMIT THEIR WATCHES TO LOCAL INSPECTORS WEEKLY FOR COMPARISON WITH STANDARD TIME, as must also other employees who have the opportunity for doing so, that a record of the rating of their watches may be made. Employees in the train service who fail to submit their watches for weekly comparison and quarterly inspection, in accordance with the terms of this circular, will be considered as having violated the rules of the service, for which satisfactory reason must be given.

When watches need cleaning or repairing they may be left with the Inspector, if the owner so desires, or they may be taken to such watch maker as the owner may select; but the watch carried in the meantime, and his own watch after the same has been repaired, must be submitted to the Company's Inspector for examination and approval before such watch can be carried in service.

When watches are left with the Inspectors of the Company to be cleaned or repaired, a standard watch will be loaned to the employee until his own is returned.

Employees who so desire can obtain standard watches, guaranteed to give the required performance, from the Inspectors on monthly payments, as may be agreed upon, not however, exceeding four in number, or \$20.00, the amount of such monthly payments to be deducted from the pay-roll.

The officers having direct charge of employees, who are subject to the above provisions, will see that certificates of the quarterly examination of watches are filed with them for watches of employees under their charge, who are subject to the rules of watch inspection, and such officers in all departments will be held responsible for the collection and filing of watch certificates.

Trainmasters must require Conductors and Brakemen, and Master Mechanics must require Engineers to turn in, regularly, certificates of weekly comparison of their watches, and will enter in records to be kept for the purpose, the dates, when such certificates are received.

Employees whose watches do not conform to the required standard will be given until June 1st, 1898, to provide themselves with standard watches, as on and after that date all employees subject to the provisions of this circular must be provided with standard watches, and the quarterly certificates to that effect must be in the hands of the officers to whom they report.

The hearty co-operation of employees in making the operation of the system successful is earnestly enjoined.

The desired results can only be obtained by observing carefully the rules as to inspection and comparison, and refraining from any attempt to set or regulate their watches themselves.

Approved,



General Manager



General Superintendent.

