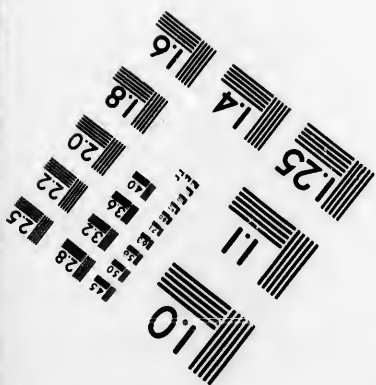
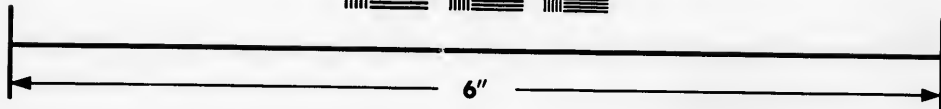
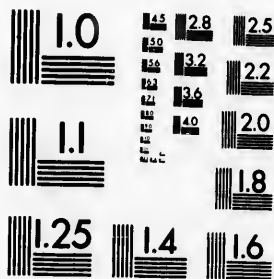


**IMAGE EVALUATION
TEST TARGET (MT-3)**



**Photographic
Sciences
Corporation**

23 WEST MAIN STREET
WEBSTER, N.Y. 14580
(716) 872-4503

**CIHM
Microfiche
Series
(Monographs)**

**ICMH
Collection de
microfiches
(monographies)**



Canadian Institute for Historical Microreproductions / Institut canadien de microreproductions historiques

© 1993

Technical and Bibliographic Notes / Notes techniques et bibliographiques

The Institute has attempted to obtain the best original copy available for filming. Features of this copy which may be bibliographically unique, which may alter any of the images in the reproduction, or which may significantly change the usual method of filming, are checked below.

L'Institut a microfilmé le meilleur exemplaire qu'il lui a été possible de se procurer. Les détails de cet exemplaire qui sont peut-être uniques du point de vue bibliographique, qui peuvent modifier une image reproduite, ou qui peuvent exiger une modification dans la méthode normale de filmage sont indiqués ci-dessous.

Coloured covers/
Couverture de couleur

Covers damaged/
Couverture endommagée

Covers restored and/or laminated/
Couverture restaurée et/ou pelliculée

Cover title missing/
Le titre de couverture manque

Coloured maps/
Cartes géographiques en couleur

Coloured ink (i.e. other than blue or black)/
Encre de couleur (i.e. autre que bleue ou noire)

Coloured plates and/or illustrations/
Planches et/ou illustrations en couleur

Bound with other material/
Relié avec d'autres documents

Tight binding may cause shadows or distortion along interior margin/
La reliure serrée peut causer de l'ombre ou de la distorsion le long de la marge intérieure

Blank leaves added during restoration may appear within the text. Whenever possible, these have been omitted from filming/
Il se peut que certaines pages blanches ajoutées lors d'une restauration apparaissent dans le texte, mais, lorsque cela était possible, ces pages n'ont pas été filmées.

Additional comments:/
Commentaires supplémentaires:

Coloured pages/
Pages de couleur

Pages damaged/
Pages endommagées

Pages restored and/or laminated/
Pages restaurées et/ou pelliculées

Pages discoloured, stained or foxed/
Pages décolorées, tachetées ou piquées

Pages detached/
Pages détachées

Showthrough/
Transparence

Quality of print varies/
Qualité inégale de l'impression

Continuous pagination/
Pagination continue

Includes index(es)/
Comprend un (des) index

Title on header taken from:/
Le titre de l'en-tête provient:

Title page of issue/
Page de titre de la livraison

Caption of issue/
Titre de départ de la livraison

Masthead/
Générique (périodiques) de la livraison

This item is filmed at the reduction ratio checked below/
Ce document est filmé au taux de réduction indiqué ci-dessous.

10X	12X	14X	16X	18X	20X	22X	24X	26X	28X	30X	32X
						/					

The copy filmed here has been reproduced thanks to the generosity of:

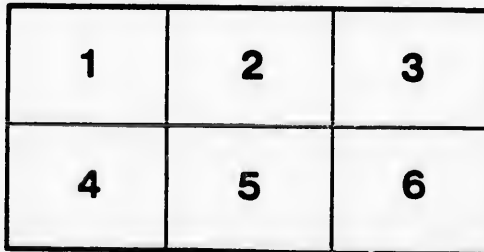
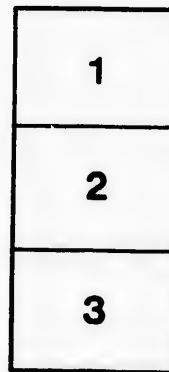
D.B. Weldon Library
University of Western Ontario

The images appearing here are the best quality possible considering the condition and legibility of the original copy and in keeping with the filming contract specifications.

Original copies in printed paper covers are filmed beginning with the front cover and ending on the last page with a printed or illustrated impression, or the back cover when appropriate. All other original copies are filmed beginning on the first page with a printed or illustrated impression, and ending on the last page with a printed or illustrated impression.

The last recorded frame on each microfiche shall contain the symbol \rightarrow (meaning "CONTINUED"), or the symbol ∇ (meaning "END"), whichever applies.

Maps, plates, charts, etc., may be filmed at different reduction ratios. Those too large to be entirely included in one exposure are filmed beginning in the upper left hand corner, left to right and top to bottom, as many frames as required. The following diagrams illustrate the method:



L'exemplaire filmé fut reproduit grâce à la générosité de:

D.B. Weldon Library
University of Western Ontario

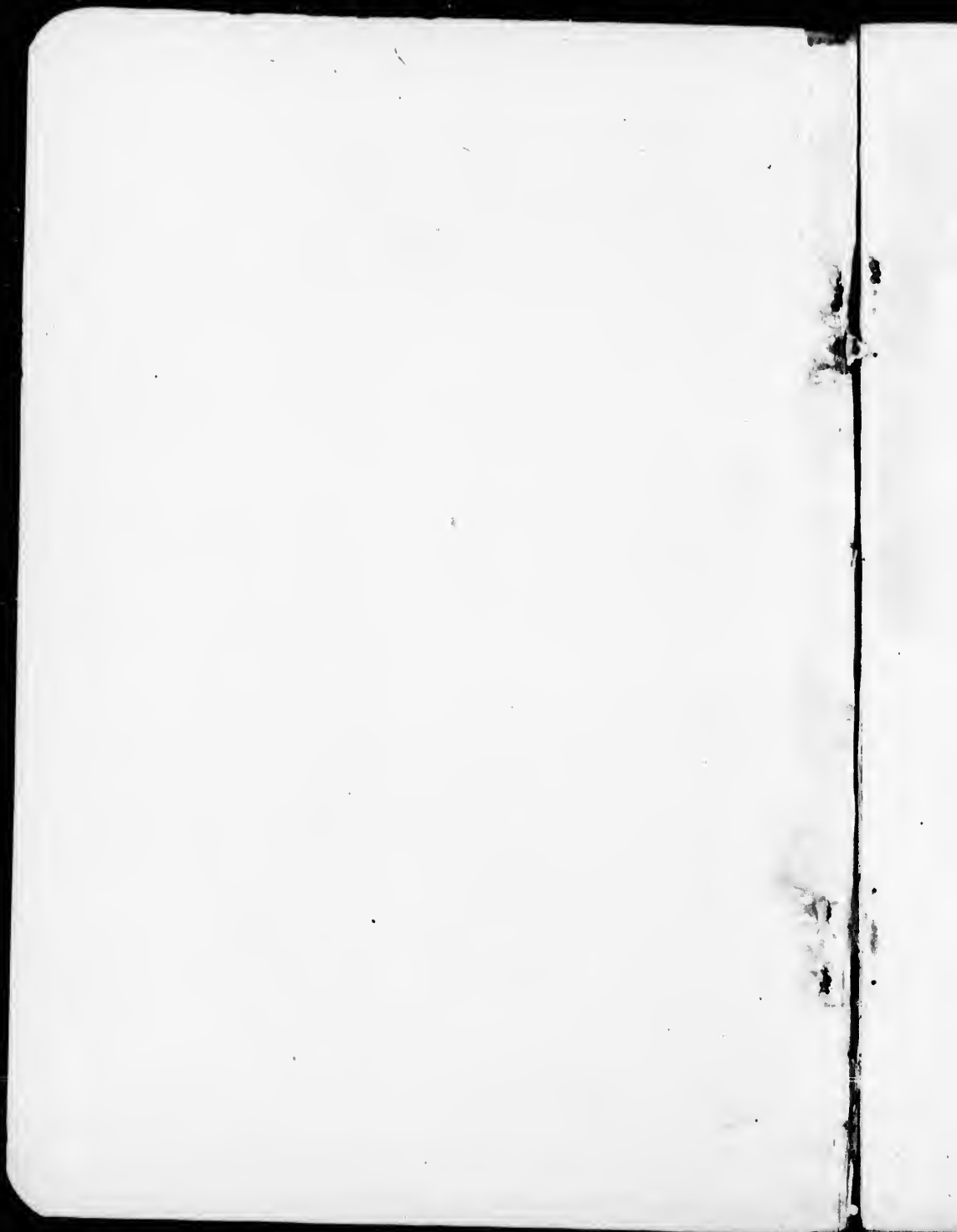
Les images suivantes ont été reproduites avec le plus grand soin, compte tenu de la condition et de la netteté de l'exemplaire filmé, et en conformité avec les conditions du contrat de filmage.

Les exemplaires originaux dont la couverture en papier est imprimée sont filmés en commençant par le premier plat et en terminant soit par la dernière page qui comporte une empreinte d'impression ou d'illustration, soit par le second plat, selon le cas. Tous les autres exemplaires originaux sont filmés en commençant par la première page qui comporte une empreinte d'impression ou d'illustration et en terminant par la dernière page qui comporte une telle empreinte.

Un des symboles suivants apparaîtra sur la dernière image de chaque microfiche, selon le cas: le symbole \rightarrow signifie "A SUIVRE", le symbole ∇ signifie "FIN".

Les cartes, planches, tableaux, etc., peuvent être filmés à des taux de réduction différents. Lorsque le document est trop grand pour être reproduit en un seul cliché, il est filmé à partir de l'angle supérieur gauche, de gauche à droite, et de haut en bas, en prenant le nombre d'images nécessaire. Les diagrammes suivants illustrent la méthode.





G. C. JOLLY

Successor to

E. N. HUNT,

E. N. HUNT,

... IMPORTER AND DEALER IN ...

OIL AND WATER COLORS

BRUSHES, CANVAS,

... AND ALL ...

ARTISTS' MATERIALS.

190 Dundas Street,

LONDON, - - ONTARIO.

ONTARIO LITHOGRAPHING & PRINTING CO.,
London, Canada.
1898.

PLEASE NOTICE.

If you do not find in this Catalogue the articles you may want, I shall always be glad to answer letters of enquiry regarding them.

Small articles may be sent by mail at the postage rate of one cent per ounce, and an extra five cents to register the parcel if desired.

The prices named herein are my present prices, but are subject to change without notice.

A complete index will be found at the back.
London, Sept. 1st, 1898.

~~E. N. HUNT.~~
G. C. JOLLY

SUCCESSOR TO

E. N. HUNT.

London, April 1st, 1901.

Owing to the advance in cost of Windsor & Newton's Oil Colors, I am obliged to increase my catalogue prices as follows:—

8c. Colors.....	to 10c. per Tube.
12c. ".....	15c. " "
24c. ".....	30c. " "
35c. ".....	45c. " "
50c. ".....	60c. " "
16c. Double Tubes.....	20c. " "
32c. Quadecuple ".....	40c. " "

Owl Brand Artists' Oil Colors will remain in price as follows:—

Single Tubes.....	5c.
Double ".....	10c.

E. N. HUNT.

As you may want, I shall
regarding them.
stage rate of one cent
parcel if desired.
es, but are subject to

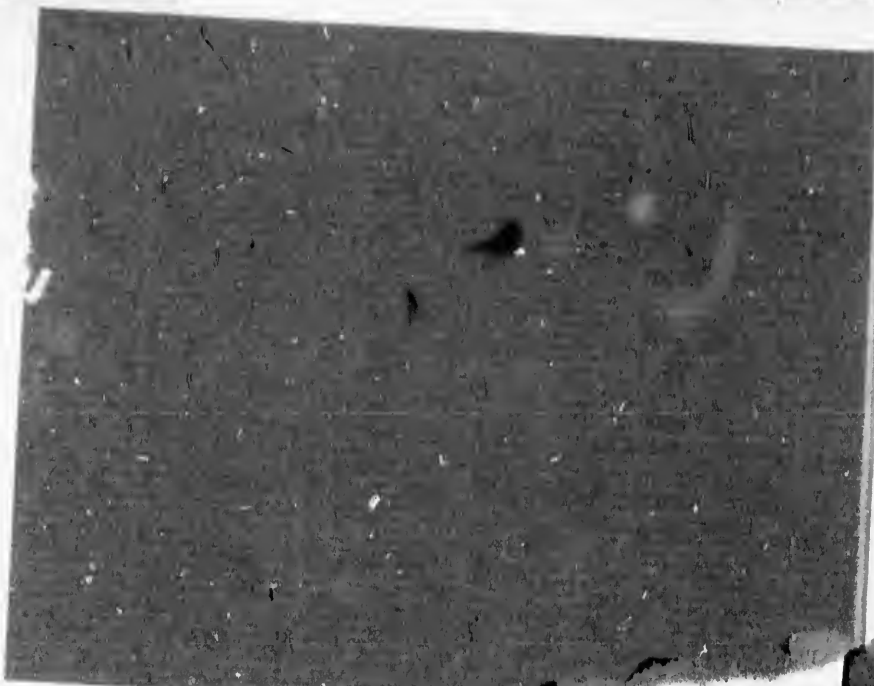


- * New Blue
- * Olive Green, 1
- * Olive Lake
- † Payne's Grey
- * Permanent White
- * Permanent Blue
- * Prussian Blue
- * Purple Lake

- Raw Sienna
- Raw Umber
- Roman Ochre
- * Sap Green
- * Scarlett Lake
- Silver White
- Sugar of Lead
- † Terre Rosa
- Terre Verte

- Transparent Gold Ochre
- * Verdigris
- † Yellow Lake
- Venetian Red
- Yellow Ochre
- Vandyke Brown
- Zinc White

The above colors not marked are filled in 4 in. tubes; those marked † are in 3 in., and those marked * are in 2 in. tubes. All the following colors are in 2 in. tubes.



The prices named herein are my present prices, but are subject to change without notice. A complete index will be found at the back.

London, Sept. 1st, 1898.

~~E. N. HUNT.~~

G. C. JOLLY

successor to

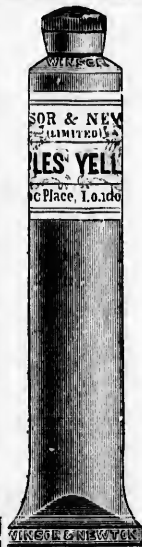
E. N. HUNT.

For instructions in Oil Paintings see Hand Books on the Fine Arts page.

WINSOR & NEWTON'S FINELY PREPARED OIL COLORS.

IN METALLIC COLLAPSIBLE TUBES.
8 CENTS PER TUBE.

Antwerp Blue	Burnt Roman Ochre	† Chrome, Green, No. 3
Asphaltum (thick)	Burnt Sienna	Chrome, Lemon
Bitumen	Burnt Umber	Chrome, Yellow
† Black Lead	Caledonian Brown	Chrome, Deep
Blue Black	* Cappah Brown	Chrome, Orange
† Bone Brown	Cassel Earth	* Chrome, Red
Brown Ochre	† Chrome, Green, No. 1	† Cinnabar Green, 1
† Brown Pink	† " " " 2	† " " 2
	† Cinnabar Green, 3	* Indian Lake
	Cologne Earth	Indian Red
	† Cork Black	† Indigo
	Crennitz White	† Italian Pink
	* Crimson Lake	Ivory Black
	Emerald Green	† Jaune Brilliant
	White	† King's Yellow
		Lamp Black
	* New Blue	Light Red
	* Olive Green, 1	* Mauve
	* Olive Lake	* Mauve, No. 2
	† Payne's Grey	Megilp
	Permanent White	Mummy
	* Permanent Blue	† Naples Yellow, Fr.
	Prussian Blue	† Naples Yellow
	* Purple Lake	† Neutral Tint
		Raw Sienna
		Raw Umber
		Roman Ochre
		* Sap Green
		* Scarlett Lake
		Silver White
		Sugar of Lead
		† Terre Rosa
		Terre Verte
		Transparent Gold Ochre
		* Verdigris
		† Yellow Lake
		Venetian Red
		Yellow Ochre
		Vandyke Brown
		Zinc White



The above colors not marked
are filled in 4 in. tubes; those
marked † are in 3 in., and those
marked * are in 2 in. tubes. All
the following colors are in 2 in.
tubes.

...ate of one cent
parcel if desired.
s, but are subject to

WINSOR & NEWTON

Winsor & Newton's Oil Colors—Continued.

Alizarin Crimson
Brown Madder
Burnt Lake
Cerulean Blue

Brilliant Ultramarine
Carmine, No. 2
Cobalt Blue
French Ultramarine
Indian Yellow
Lemon Yellow, Pale

Aureolin
Burnt Carmine

12 CENTS PER TUBE.

Chinese Vermilion
French Vermilion
Geranium Lake

Rubens' Madder
Rembrandt's Madder
Sepia
Vermilion

24 CENTS PER TUBE.

Lemon Yellow
Madder Lake
Malachite Green
Mars Orange
Mars Red
Mars Yellow

Orange Vermilion
Oxide of Chromium
Pink Madder
Rose Madder
Scarlet Vermilion
Viridian

35 CENTS PER TUBE.

Cadmium Yellow, Pale
Cadmium Yellow, Deep
Cadmium, Orange
Carmine, (Finest)

Crimson Madder
Madder Carmine
Violet Carmine
Yellow Carmine

50 CENTS PER TUBE.

Aurora Yellow.

Double tubes of Flake Silver and Cremnitz White each 16c.
Quadruple " " " " " " " 32c.

Winsor & Newton's colors are known throughout the civilized world, and need no recommendation from us. Their trade mark is a guarantee of excellence on whatever it is used.

**OWL BRAND ARTISTS' OIL COLORS**

In 4 in. Single Tubes.

PRICE 5 CENTS PER TUBE.

These Colors are finely ground and specially manufactured for *Students and Beginners*, and adapted to the wants of the Artist who... a lower priced article than the expensive tube is required.

Antwerp Blue
Burnt Sienna
" Umber
Chrome, Green,
Light
Chrome, Green,
Deep
" Yellow Pale
" " Medium
" " Deep

Emerald Green
Flake White
Ivory Black
Indian Red
Indigo
Italian Pink
Light Red
Megilp
Naples Yellow
Prussian Blue

Permanent Blue
Raw Sienna
" Umber
Scarlet Lake
Sepia
Terre Verte
Ultramarine Blue
Vandyke Brown
Venetian Red
Vermilion
Yellow Ochre

OWL BRAND, ARTISTS' OIL COLORS

In Double 4 inch. Tubes.

These finely prepared German Colors, being done up in double tubes, are almost half the price of Winsor & Newton's Colors, and Artists who have used them pronounce them very satisfactory.

PRICE PER DOUBLE TUBE 10c.

Antwerp Blue	Copal Megilp	Indian Red	Raw Umber
Asphaltum	Cologne Earth	King's Yellow	Sugar of Lead
Blanc d' Argent	Caledonian Brown	Light Red	Silver White
Burnt Sienna	Chrome, Yellow	Lamp Black	Transp. Golden
" " Light	Lemon	Mummy	Ochre
Brown Ochre	Chrome, Yellow	Megilp	Terre Verte
Burnt Roman Ochre	Orange	Oxford Ochre	Venetian Red
Blue Black	Cremnitz White	Portland Umber	Vandyke Brown
Burnt Umber	Emerald Green	Prussian Blue	Yellow Ochre
Cool Roman Ochre	Flake White	Raw Sienna	Zinc White
Chinese Blue	Ivory Black		

*Robertson's Medium.***FOR OIL PAINTING.**

Single Tubes	25c.
Double "	50c.

Japan Tin Boxes for Oil Colors.

All empty boxes can be filled with any arrangement of colors and brushes at prices desired in this list.



*Japan Boxes for Oil Colors—Continued.***NO. 1.**

Size $11\frac{1}{2} \times 6$ in., 2 in. deep; to contain 12 Colors, 2 Bottles, Brushes, Palette, etc. Price, empty.....each \$1.25

NO. 2.

Size $13\frac{1}{4} \times 9$ in.; $1\frac{3}{4}$ in. deep, to contain 18 single and 2 double Tubes, Bottles, Brushes, Palette, etc. Price, empty.....each \$1.75.

NO. 3.

Size $9\frac{3}{4} \times 13\frac{1}{2}$ in., 3 in. deep; moveable tray, with double bottom, for carrying wet Sketches, Academy Board, etc., to contain 34 Tubes; Flaps covering all materials. Price, empty.....each \$3.00

Oils and Varnishes.

PER BOTTLE.
 Pale Drying Oil.....15c.
 Refined Linseed Oil.....15c.
 Poppy Oil.....20c.
 Nut Oil.....20c.
 Artists' Medium.....20c.
 Spirits of Turpentine.....15c.
 Picture Mastic Varnish.....40c.

PER BOTTLE.
 Picture Copal Varnish.....25c.
 Crystal Varnish.....20c.
 Demar Varnish.....20c.
 Stelnee's Retouching Varnish.....25c.
 Siccatif de Harlam Varnish.....50c.
 " Courtrai ".....25c.

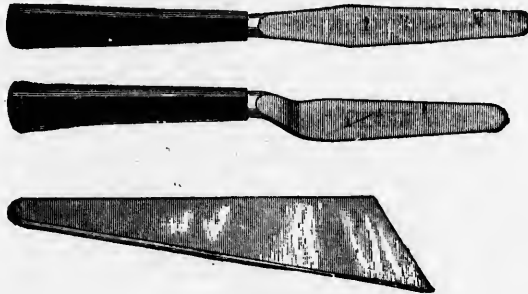
Academy Boards.

PER SHEET.
 18x24 Rough or Smooth.....25c.
 12x15 " " ".....15c.
 9x12 " " ".....10c.

Oil Sketching Paper.

American Smooth, 21x30.....	PER SHEET.	25c.
" Rough, 21x30.....		30c.
English, Roman Canvas Surface, 22 x 30.....		40c.

Palette Knives.



3 in. Steel Blade.....	EACH.	20c.	3 in. Folding.....	EACH.	50c.
4 in. " ".....		25c.	5 in. All Horn for China Painting..		15c.
3½ " " " Trowel shape.....		45c.			

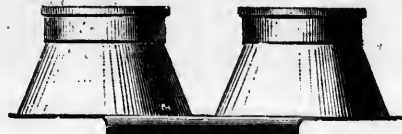
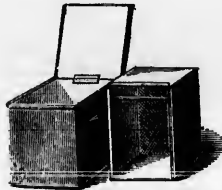
Keyed Stretchers.

Covered with Prepared Canvas for Oil Painting.

SIZE.	PRICE, EACH.	SIZE.	PRICE, EACH.
8 x 10.....	\$0 35	18 x 24.....	\$0 85
10 x 12.....	40	20 x 26.....	90
10 x 14.....	45	22 x 27.....	95
10 x 16.....	50	20 x 30.....	95
12 x 18.....	55	25 x 30.....	1 15
14 x 20.....	60	22 x 36.....	1 30
16 x 22.....	70	24 x 36.....	1 45

Other Sizes made to order.

Artists' Tinware.



Artists' Tinware—Continued.

Tin Dippers, single, without lid.....	each, 5c.
" " double, " lids.....	" 10c.
" " single, capped.....	" 15c.
" " double, ".....	" 25c.
" " single, lead screw top.....	" 15c.
" " double, " ".....	" 30c.
" Oil Bottles.....	30c.
" Brush Washers, 3 x 4 inches, 3/4 inches deep.....	90c.

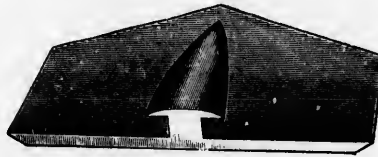
Pfleger Patent Canvas Stretcher.

This Stretcher is made in pieces, assorted lengths; each piece is made with double joints. These joints give double the strength over the old single joint and obtains perfect uniformity in the frame. The smallest piece will form a joint with the largest or any size, so that all sizes of stretchers can be made. No nailing or mitering required.

Stretchers up to 1 and including 36 inches.....	each, 25c.
" " " " 40 ".....	" 35c.

*Universal Stretcher Key.***FOR CANVAS STRETCHERS.**

(PAT. APPLIED FOR.)



[ACTUAL SIZE.]

Universal because so simple and small that therefore the cost to manufacture has been so reduced that they are but a trifle more expensive than the old style wooden stretcher, which will cause them to be universally used. This key is a substitute for mortise joints on canvass stretchers, EVEN IN PRICE.

MAKE YOUR OWN STRETCHERS

With the Universal Stretcher Key. Any size canvas can be made in short order. They stretch evenly, and are easily applied, requiring only to be hammered firmly, one with each corner. In every way they give perfect satisfaction.

Four to each Set..... per Set 10c.

Artists' Prepared Canvas

In Rolls of 6 Yds.

WINSOR & NEWTON'S "BEST" CANVAS.

SIZE.	SMOOTH PER YARD.	ROMAN, PER YARD.	TICKEN PER YARD.
27 inches wide.....	\$0 90	\$0 90	\$1 35
31 " ".....	1 00	1 00	1 50
36 " ".....	1 25	1 25	1 75
42 " ".....	1 50	1 50	

WINSOR & NEWTON'S "BRITISH" CANVAS—SMOOTH

This Canvas is now the principal line in the trade, and is specially prepared by W. & N. in the same manner as their best Canvas for all ordinary work.

27 inches wide.....	per yard,	65c.
31 " ".....	"	80c.
36 " ".....	"	90c.
42 " ".....	"	\$1.10

Moleskin Velvet.

WHITE, FINEST QUALITY.

26 inches wide.....	per yard,	\$1.25
---------------------	-----------	--------

Placques.

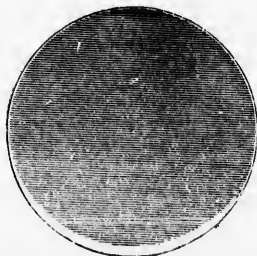
Composition or Papier-Mache Placques.

Inches..	7	8	10	12	14	16
Each...	25c.	30c.	40c.	50c.	65c.	85c.

Japan Tin Placques in Five Colors.

BLACK, PALE BLUE, TERRA COTTA, PALE GREEN, PALE PINK.

Inches..	6	8	10	12
Each...	30c.	45c.	60c.	75c.



E. N. HUNT,

FROSTED GLASS PLACQUES.

ROUND, ACID ROUGHED.

Inches..	5	6	7	8	9	10	12	14	16	18
Each....	20c.	25c.	30c.	35c.	50c.	60c.	75c.	\$1.00	\$1.50	\$2.25

Superior Brass Placques.

With Beaded Rim.

Inches.....	6	8	10	12
Each.....	25c.	30c.	40c.	50c.

Canvas Panels.

These Panels are half an inch thick, and have a fancy scroll border, forming a frame of white and gold. The centre is firmly covered with Artists' heavy canvas.

SIZE.	PRICE, EACH.	SIZE.	PRICE, EACH.
4 x 6.....	\$0 45	5 x 10	\$ 55
5 x 7.....	45	8 x 10.....	80
6 x 8.....	55	6 x 12.....	80

Wood Panels

WITH ROUGH COATED SURFACE SIMILAR TO ROUGH ACADEMY BOARDS, ROUGH
GILT BEVELLED EDGE.

5 x 10 with easel back rest	each, 40c.
6 x 12 " " " "	" 45c.
8 x 10 " " " "	" 50c.
10 x 14 with screw eyes.....	" 60c.

Plaque Easels and Holders.



AS PER ABOVE CUTS.

		PRICE EACH.			PRICE EACH.
No. 1 easel	3 1/2 inches high 12c.	No. 1 Hanger for 8 to 9 in. Plaque.	15c.	
" 2 "	4 1/4 " " 15c.	" 2 "	" 10 " 12 " 20c.
" 3 "	5 " " 20c.	" 3 "	" 12 " 13 " 25c.
" 4 "	6 " " 25c.			
" 5 "	7 " " 30c.			

Wooden Palettes.



Finest Mahogany, 8 in., oval or oblong each,	15c.
" " 10 " " "	20c.
" " 12 " " "	25c.
" " 14 " " "	40c.
" " 12 " Folding or oblong "	40c.

Rest or Mahl Sticks.

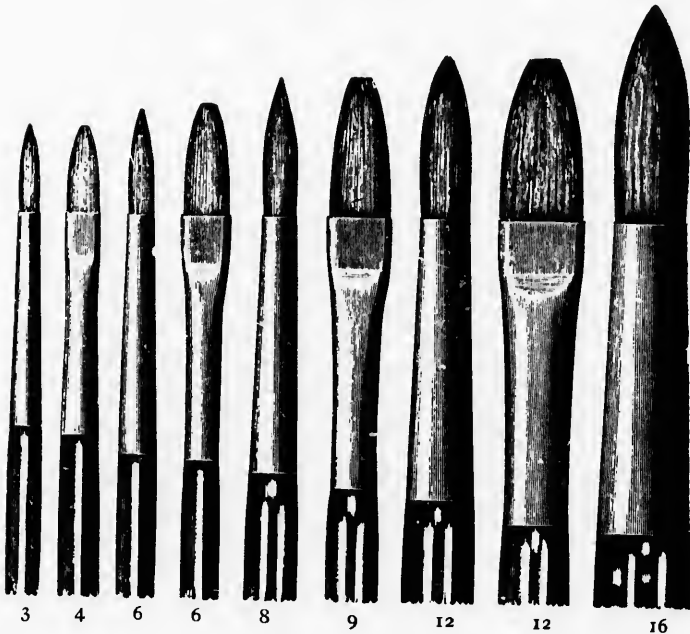
Long Wooden, varnished each,	25c.
White Wood "	15c.
" " in three parts ferrule "	30c.

Brushes for Oil Painting.

When ordering Brushes it is well to specify width required, as numbers of sizes vary according to makers.

HOG-HAIR BRUSHES—FINE BRISTLES—POLISHED LONG, RED HANDLES.

ROUND AND FLAT.

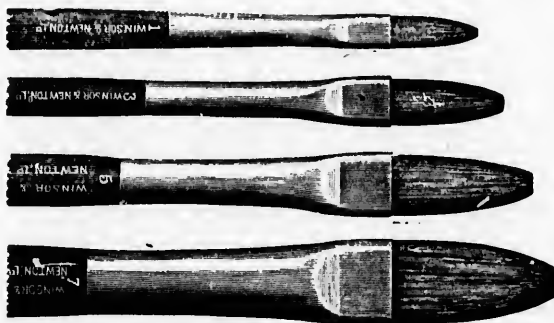


No. 1.....	Each, 5c.	No. 10.....	Each, 12c.
" 2.....	" 5c.	" 11.....	" 12c.
" 3.....	" 6c.	" 12.....	" 12c.
" 4.....	" 6c.	" 13.....	" 15c.
" 5.....	" 8c.	" 14.....	" 15c.
" 6.....	" 8c.	" 15.....	" 15c.
" 7.....	" 10c.	" 16.....	" 20c.
" 8.....	" 10c.	" 18.....	" 20c.
" 9.....	" 10c.	" 20.....	" 20c.

Brushes for Oil Painting—Continued.

WINSOR & NEWTON'S

HOG-HAIR BRUSHES—FLAT ONLY, ENGLISH SIZES. 12 IN., POLISHED RED CEDAR HANDLES.



No.....	1	2	3	4	5	6	7	8	9	10	11	12
Each...	10c.	10c.	10c.	12c.	12c.	15c.	15c.	20c.	20c.	25c.	25c.	30c.

"IMITATION" RED SABLES, LONG POLISHED CEDAR HANDLES.

A substitute for the expensive Red Sable, and resembling it in color and size.

No....	1	2	3	4	5	6	7	8	9	10	11	12
Each..	5c.	5c.	7c.	7c.	8c.	10c.	12c.	12c.	15c.	15c.	20c.	20c.

"BRIGHT'S" RED SABLE BRUSHES, NICKLE FERRULES, LONG POLISHED NATURAL WOOD HANDLES.



No.....	4	5	6	7	8	9	10
Each...	20c.	20c.	30c.	35c.	30c.	50c.	60c.

umbers

LES.

6

12c.
12c.
12c.
15c.
15c.
15c.
20c.
20c.
20c.

Brushes for Oil Painting—Continued.

"BRIGHT'S" RUSSIAN SABLE BRUSHES, NICKLE FERRULES, LONG POLISHED HANDLES.

No.....	4	6	8	10	12	14
Each.....	10c.	10c.	10c.	15c.	15c.	15c.

WINSOR & NEWTON'S

"BRIGHT'S" HOG HAIR BRUSHES.

Very fine quality.

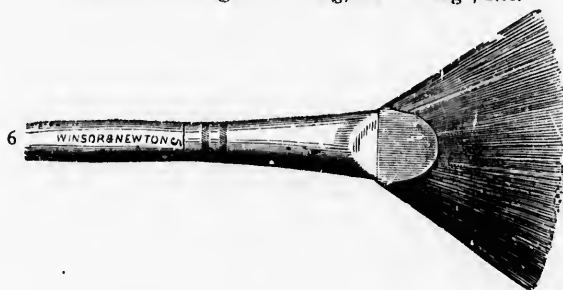


No....	1	2	3	4	5	6	7	8	9	10	11	12
Each..	10c.	12c.	15c.	15c.	20c.	20c.	20c.	25c.	25c.	30c.	35c.	40c.

A cheaper quality of above can be furnished if desired.

HOG HAIR FAN BRUSHES.

Extra fine for Light Touching, Hair Foliage, Etc.



No....	1	2	3	4	5	6
Each..	10c.	10c.	10c.	15c.	15c.	15c.

RED SABLE FAN BRUSHES.

No....	1	2	3	4	5	6
Each..	35c.	45c.	55c.	65c.	75c.	85c.

Brushes for Oil Painting—Continued.*

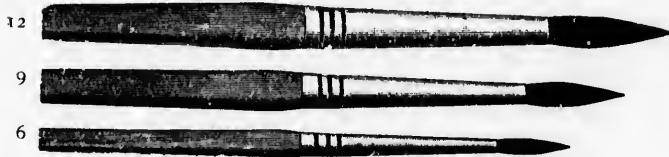
FINE ROUND BADGER SOFTENERS.
POLISHED HANDLES.



No.	1	2	3	4	5	6	7	8
Price, each.	15c.	20c.	25c.	35c.	40c.	50c.	60c.	70c.

Red Sable Brushes in Tin.

LONG POLISHED NATURAL WOOD HANDLES. GUARANTEED ALL
"PURE" RED SABLE.



ROUND OR FLAT.

No.	1	2	3	4	5	6	7	8	9	10	11	12
Each ..	10c.	10c.	12c.	12c.	15c.	15c.	20c.	20c.	25c.	30c.	35c.	40c.

NOTE.—Care should be observed in purchasing Red Sables. These brushes are often adulterated with common hair, not easily detected. However low they may be in price they are sure to bring annoyance to the artist. We guarantee our Sables to be pure hair.

ENGLISH FLAT CAMEL HAIR BRUSHES FOR VARNISHING OR COPYING.

½ inch	Each, 20c.
1 "	" 25c.
1½ "	" 35c.
2 "	" 50c.

MATERIALS FOR WATER COLOR PAINTING.**WINSOR & NEWTON'S****Finely Prepared Moist Water Colors.**

IN HALF PANS, MOIST.



For instructions in Water Color Painting see Hand Books on the Fine Arts.

Antwerp Blue	Hooker's Green, No. 2	Payne's Grey
Bistre	Indigo	Prussian Blue
Blue Black	Indian Red	" Green
Brown Ochre	Italian Pink	Raw Sienna
" Pink	Ivory Black	Raw Umber
Burnt Umber	King's Yellow	Roman Ochre
" Sienna	Lamp Black	Sap Green
Chinese White	Light Red, Mauve	Terre Verte
Cologne Earth	Naples Yellow	Venetian Red
Chrome, Yellow	Neutral Tint	Vandyke Brown
Deep Chrome	New Blue	Vermilion
Emerald Green	Olive Green	Yellow Lake
Gamboge	Orange Chrome	" Ochre
Hooker's Green, No. 1		

PRICE IN HALF PANS, EACH, 12½ CENTS.

Brown Madder	Neutral Orange	Scarlet Lake
Constant White	Purple Lake	Sepia
Cerulean Blue	Reuben's Madder	Scarlet Vermilion
Crimson Lake	Roman Sepia	Warm Sepia
Mars Yellow		

PRICE, EACH, 20 CENTS.

Cadmium, Yellow	French Blue	Violet Carmine
" Pale	Indian Yellow	Viridian or Veronese
" Orange	Lemon "	Green
Cobalt Blue	Orange Vermilion	

PRICE, EACH, 25 CENTS.

Material for Water Color Painting—Continued.

Aureolin	Indian Purple	Pink Madder
Burnt Carmine	Intense Blue	Pure Scarlet
Carmine	Mars Orange	Purple Madder
Field's Orange Vermilion	Madder Lake	Rose "
Green Oxide of Chromium	" Carmine	

PRICE, EACH, 40 CENTS.

Smalt, Ultramarine Ash

PRICE, EACH, 55 CENTS.*Students' Moist Water Colors.*

In china half-pans, same size as the ordinary half-pans.



These colors are strong and good value, specially adapted for students and beginners.

PRICE, EACH, 5 CENTS.

Burnt Sienna	Gamboge	Prussian Blue
Burnt Umber	Hooker's Green, No. 1	Purple
Chinese White	" " " 2	Raw Sienna
Chrome Green	Indian Red	Raw Umber
Chrome Yellow, No. 1	Indigo	Sap Green
" " " 2	Ivory Black	Sepia
" " " 3	Light Red	Ultramarine
Cobalt	Naples Yellow	Violet
Crimson Lake	Olive Green	Yellow Ochre
Emerald Green		

PRICE, EACH, 10 CENTS.

Brown Madder	Carmine	Rose Madder
Cadmium, Yellow	Indian Yellow	Scarlet Lake
" " Deep	Lemon "	Warm Sepia
" " Orange		

WINSOR & NEWTON'S
LIQUID WATER COLORS AND MEDIUMS.



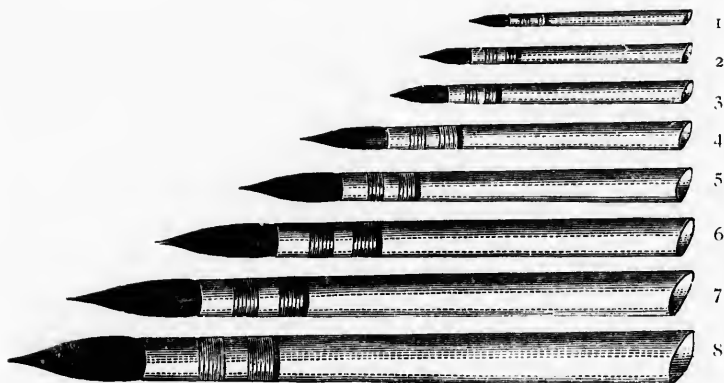
SMALL BOTTLE.

LARGE BOTTLE.

LARGE BOTTLE.

Liquid Prout's Brown	Each, 30c.	20c.
" Sepia	" 30c.	20c.
" Asphaltum	" 30c.	20c.
" Carmine	" 30c.	20c.
" Vermilion	" 30c.	20c.
" Prussian Blue	" 30c.	20c.
" Colorless Ox Gall	" 30c.	20c.
" Lamp Black	" 30c.	20c.
" Indian Ink	" 30c.	20c.
" Indel. Brown Ink	" 30c.	20c.
Prepared Ox Gall in gallipots	" 30c.	20c.
Water Color Megilp	" 30c.	20c.
Gold Ink	" 30c.	20c.
Silver Ink	" 30c.	20c.
Water Mat Gold Size, gallipots	" 30c.	20c.
Burnish " "	" 30c.	20c.
Chinese White	" 30c.	20c.
Preparation for Painting Satin or Silk, &c.	" 30c.	35c.

*BRUSHES FOR WATER COLOR
PAINTING.*



NO. 1 CAMEL-HAIR PENCILS IN QUILL.—SUPERFINE, TIED
WITH GOLD WIRE.

No.....	1	2	3	4	5	6	7	8
Price, each..	3c.	3c.	5c.	5c.	7c.	7c.	10c.	10c.

NO. 4. CAMEL-HAIR PENCILS IN QUILL.—FINE, TIED
WITH RED SILK.

No.....	1	2	3	4	5	6	7	8
Price, each..	2c.	2c.	3c.	3c.	4c.	4c.	5c.	5c.

RED SABLE PENCILS IN QUILL.—FINEST, TIED WITH GOLD WIRE.

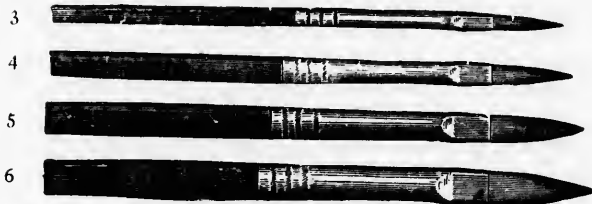
SAME SIZES AS ABOVE CUT.

No.....	1	2	3	4	5	6	7	8
Price, each..	6c.	8c.	10c.	15c.	20c.	30c.	40c.	50c.

E. N. HUNT,

*Brushes for Water Color Painting—Continued.*RED SABLE BRUSHES IN ALBATA—EXTRA FINE, SHORT
POLISHED HANDLES.

ROUND OR FLAT.



No.....	1	2	3	4	5	6	7	8
Price, each...	10c.	15c.	20c.	25c.	30c.	40c.	50c.	60c.

ROUND, DOUBLE END CAMEL HAIR BRUSHES.



No.....	1	2	3	4	5	6
Price, each,	12c.	15c.	15c.	20c.	20c.	25c.

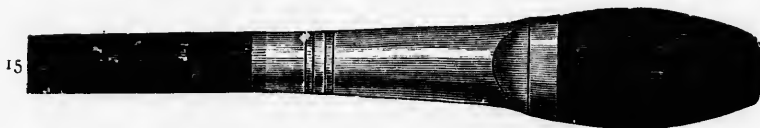
CAMEL HAIR SKY OR WASH BRUSHES—ROUND, EXTRA FINE IN ALBATA.



No.....	12	13	14	15
Price, each...	20c.	25c.	30c.	35c.

Brushes for Water Color Painting—Continued.

LARGE FLAT SIBERIAN HAIR WASH BRUSHES—IN ALBATA.

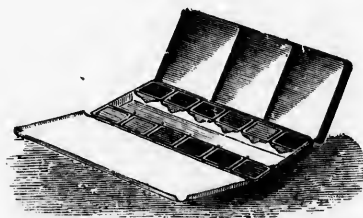


No.....	15	20
Price, each..	30c.	40c.

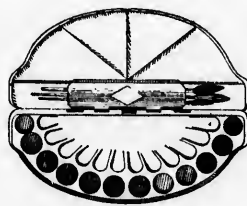
Handles for Quill Brushes.

No. 1—Plain.....	per doz.	7c.
“ 2—Polished.....	“	10c.
“ 3—Cedar.....	“	10c.
“ 4—Mahogany and Ebony, assorted.....	“	15c.

Japanned Tin Boxes of Moist Water Colors.



CUT NO 1.



THE DELACROIX.

- No. 1—Size 2½ x 6¼ inches, containing twelve moist water colors in metal pans, and brushes.....each 35c.
- No. 2—Size 3¼ x 6½ inches, containing twelve colors in metal pans, tube each Sepia and Chinese White, brushes, etc.....each 5c.
- The “Delacroix,” size 3½ x 7¾ inches, containing twelve moist water color tablets, and brushes.....each 35c.

Empty Japanned Tin Moist Water Color Boxes.

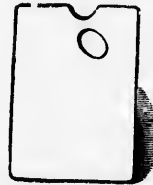
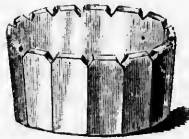


HALI-PAN BOXES.

To contain 10 half-pans.....	each	\$1 40
" 12 ".....	"	1 60
" 14 ".....	"	1 70
" 16 ".....	"	1 80
" 18 ".....	"	1 95
" 20 ".....	"	2 05
" 24 ".....	"	2 25

Any desired arrangement of colors placed in these boxes at prices in this list.

Artists' China Ware.



CHINA PALETTES.

(OVAL OR OBLONG.)

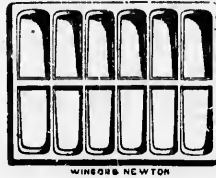
Size.....	4 in.	5 in.	6 in.	7 in.	8 in.	9 in.	10 in.
Price, each....	15c.	20c.	25c.	30c.	35c.	40c.	45c.

ARTISTS' WATER GLASSES.

2¼ inches in diameter, 1¼ inch deep..... each 30c.

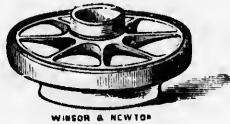
Artists' China Ware—Continued.

DIVIDED SLANTS.



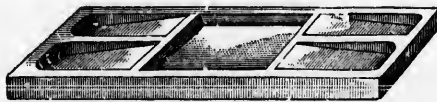
3 Divisions.....	each	20c.
4 ".....	"	25c.
6 ".....	"	30c.
8 ".....	"	50c.
12 ".....	"	75c.

ROUND SLANTS AND BASINS.



7 inches in diameter, basin 2 inches deep, 8 slants..... each 90c.

CENTRE SLANTS.



2 1/4 x 6 inches..... each 20c.

ES.

h \$1 40
1 60
1 70
1 80
1 95
2 05
2 25

in this

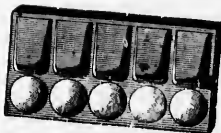
in.
c.

1 30c.

E. N. HUNT.

Artists' China Ware—Continued.

INDIA INK SLABS.



- 3 Well Slabs, 3 x 4½.....each 10c.
 5 " " 4 x 7½, with 5 slants..... " 50c.

CABINET AND TINTING SAUCERS.



- Cabinet Saucers 5 in set.
 No. 1 Set, 2¾ in. diameter.....per set 40c.
 " 2 " 2¾ " " 50c.
 " 3 " 3 " " 60c.

TINTING SAUCERS.

- 2 inches.....per doz. 30c.
 3 " " 35c.

Acme Water Colors.

For Coloring Photographs.

- 18 Colors in Metal Box.....\$2 50
 6 " " Paper " 1 00
 Acme Gloss Compound..... 50

Papers

For Water Color Painting.

"H. P." signifies HOT PRESSED—a smooth surface, mostly used for pencil drawing.

"N." signifies NOT HOT PRESSED—a finely grained surface for water color.

"R." signifies ROUGH—a coarse grained surface for water color and bold drawing.

WHATMAN'S DRAWING OR WATER COLOR PAPERS.

Royal, 19½ x 24, N. and R.....	per sheet	10c.
Imperial, 22 x 30½ H. P., N. and R.....	"	15c.
Double Elephant, 27 x 40, N. and R.....	"	25c.

WHATMAN'S DRAWING OR WATER COLOR PAPER,
EXTRA HEAVY.

Imperial, 22 x 30½, 90 lbs., H. P., N. and R.....	per sheet,	20c.
" 22 x 30½ 140 " N. and R.....	"	40c.

HOLLINGSWORTH'S DRAWING OR WATER COLOR PAPER.

Imperial, 22 x 30, 72 lbs., N.....	per sheet,	10c.
------------------------------------	------------	------

DRAUGHTSMAN'S PAPER.

A splendid paper of even grain for Draughtsmen, regular drawing or water colors.

Imperial, 22 x 30, N.....	per sheet	10c.
Double Elephant, 27 x 40, N.....	"	15c.

E. N. HUNT,

Whatman's Sketch Blocks.

MADE OF WHATMAN'S IMPERIAL WATER COLOR PAPER.
32 SHEETS ON EACH BLOCK.

	WITH COVER.	WITHOUT COVER.
5 x 7 in. "rough" or "not" surface.....	\$1 00	\$0 50
5½ x 9 " " " "	1 20	65
7 x 10 " " " "	1 40	80
9 x 11 " " " "	2 10	1 10
10 x 14 " " " "	2 60	1 50
11 x 18 " " " "		2 00
14 x 20 " " " "		3 00

After blocks are used, new ones may be replaced on these covers, thereby saving extra expense.

16 SHEETS ON BLOCK.
WITHOUT COVERS.

5½ x 9 in. "rough" or "not" surface.....	each \$0 40
7 x 10 " " " "	" 50
9 x 11½ " " " "	" 65
10 x 14 " " " "	" 90
11½ x 18 " " " "	1 10
14 x 20 " " " "	1 70

Sketch Books.

STIFF CLOTH COVERS.

9 x 5½ inches, 22 leaves.....	each 50c.
11½ x 9 " " " "	" 90c.

Materials for China Painting.

CAUTION: It is most important that only absolutely pure materials should be used in Ceramic painting. Any departure from this rule is sure to cause the keenest disappointment, as no subsequent patching can restore what is once lost in this way.

A LACROIX' COLORS

FOR PAINTING
ON

Glazed China, Tiles, Earthen-
ware, Etc.



SIZE OF TUBE.

IN TUBES READY
FOR USE

Like Oil or Moist Water
Colors.

For instructions in China Painting, see Hand Books on Fine Arts.

COLORS FOR PAINTING.

BLACKS.

	Per tube.
Raven Black.....	17c.
Ivory Black.....	15c.

BLUES.

Two Fire Blue.....	17c.
Dark Blue.....	15c.
Common Blue.....	15c.
Deep Blue.....	17c.
Deep Ultramarine.....	24c.
Light Sky Blue.....	17c.
Sky Blue.....	17c.
Victoria Blue.....	15c.
Old Blue.....	15c.
Delft Blue.....	15c.
Blue No. 29.....	15c.
Cornflower Blue.....	17c.
Old Rouen Blue.....	15c.

BROWNS.

	Per tube.
Black Brown.....	17c.
Chestnut Brown.....	17c.
Otter Brown.....	17c.
Van Dyke Brown.....	17c.
Gillyflower Brown.....	17c.
Brown No. 3.....	17c.
" No. 4 or 17.....	17c.
" M. or 108.....	17c.
Dark Brown.....	17c.
Deep Red Brown.....	17c.
Light Brown.....	17c.
Sepia.....	17c.
Yellow Brown.....	17c.

CARMINES.

Light Carmine A.....	17c.
Light Carmine No. 1.....	17c.
Carmine No. 2.....	21c.
Deep Carmine No. 3.....	24c.

CARNATIONS.

	Per tube.
Carnation No. 1.....	17c.
" " 2.....	17c.
" Deep.....	17c.

FLUX.

Flux.....	15c.
-----------	------

GREENS.

Grass Green No. 5.....	17c.
Brown " " 6.....	17c.
Dark " " 7.....	17c.
Green No. 36 T.....	17c.
Apple Green.....	15c.
Deep Blue Green.....	24c.
Chrome Green 3 B.....	17c.
Deep Chrome Green.....	17c.
Deep Green.....	17c.
Emerald Stone Green.....	17c.

PER.

WITHOUT COVER.

\$0 50
65
80
1 10
1 50
2 00
3 00

thereby

1 \$0 40
50
65
90
1 10
1 70

50c.
90c.

Oils and Mediums.

For China Painting.

Lacroix's Essence of Grasse (Fat Oil of Turpentine).....	per Bottle,	35c.
Lacroix's Rectified Spirits of Turpentine.....	"	15c.
Lacroix's Oil of Cloves.....	"	40c.
Lacroix's Oil of Aniseed.....	"	35c.
Cooley's Tinting Oil.....	"	40c.
Seavey's Tinting Oil.....	"	25c.
Best English Grounding O.l.....	"	40c.

Prepared Gold.

For China Painting.

Cooley's Roman Gold or Mat Gold (Fluxed).....	per Box,	\$1 00
Cooley's Hard Gold for Gilding over Color.....	"	1 00
Plant's Mat Gold (Fluxed).....	"	65
Plant's Hard Gold.....	"	65
Cooley's Liquid Bright Gold.....	per Bottle,	1 00

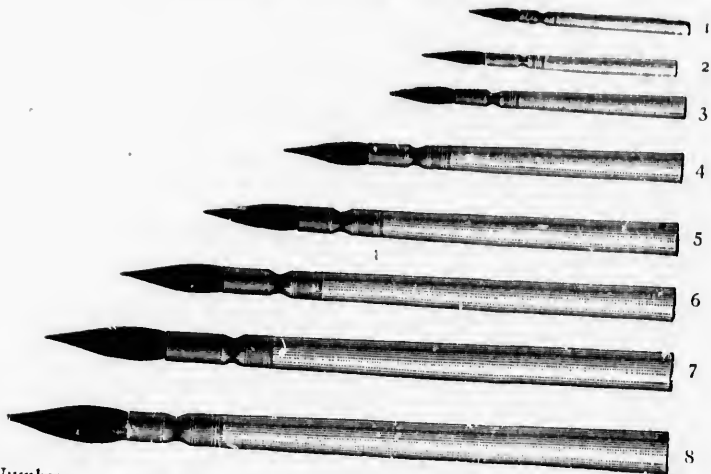
NOTE.—There are many makes of Gold in the market, but for *quantity* and *quality* Cooley's Gold stands unrivalled.

Gold and Silver Shells and Saucers.

Pure Gold in China Saucers.....	15c.
Pure Gold in Mussel Shells.....	15c.
Silver on China Saucers.....	12c.
Silver on Mussel Shells.....	12c.

Brushes for China Painting.

CAMEL-HAIR PAINTING PENCILS—POINTED.



Number.....	1	2	3	4	5	6	7	8
Price, each.....	5c.	5c.	6c.	6c.	8c.	8c.	10c.	10c.

CAMEL HAIR PAINTING PENCILS.

Square points, sizes and prices the same as Pointed—See above.

Best Red Sable Liners.

Very fine for Gold Lines and Raised Paste.

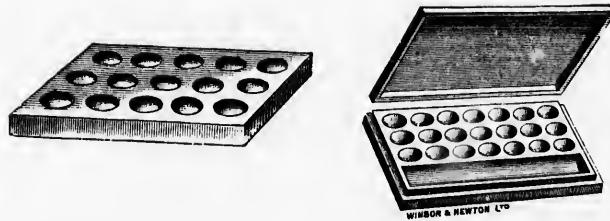


Nos. 0, 1, 2each, 15c.

E. N. HUNT,

Color Slabs

For China Painting.



No. 1—4 x 2 3/4 inches, 15 wells	each, 20c.
" 2—4 x 6 " 24 "	" 40c.
" 3—4 1/4 x 6 1/2 " with cover	" 65c.

*Plate Glass Slabs and Mullers.**



GROUND SURFACE, ROUND EDGES.

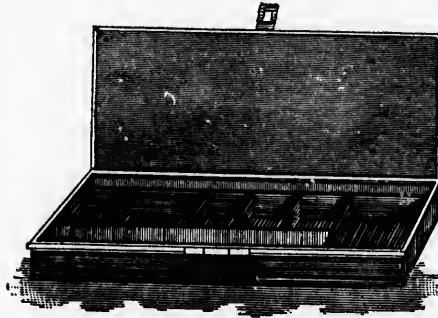
6 x 6 inches.....	each, \$0 35
8 x 8 "	" 50
10 x 10 "	" 75
10 x 12 "	" 1 00

Glass Mullers.

Size.....	1 inch,	1 1/2 inch.	2 inch.	2 1/2 inch.	3 inch.
Price each....	15c.	25c.	30c.	50c.	65c.

Empty Japanned Tin Box

For China Colors.



Size $6\frac{1}{2}$ x $10\frac{1}{2}$ x 2 inches deep.

In above Box there are three spaces for bottles, one for Hard and Roman Gold, one for Muller, and China Slab No. 1, and space for brushes.

There are also two Trays, capable of holding 50 colors if necessary. These trays are of bright tin and without partitions, so that they may be easily cleaned—a real necessity in a perfect China Color Box.

Price, empty \$1 75

Atomizers.

For Spraying Fixatif on Crayon and Charcoal Drawings.



Japanned Tin, like Sketch each, 15c.
Nickel Plated, round tube " 20c.

ch, 20c.
" 40c.
" 65c.

\$0 35
50
75
1 00

inch.
5c.

Materials for Drawing Crayon and Pastel Work.

For instructions in above see Hand Books on Fine Arts.

CONTÉ CRAYONS.

$2\frac{1}{2}$ long by $\frac{1}{4}$ inch square, Black or White.

No. 1, Hard. No. 2, Medium. No. 3, Soft.
3 for 5c. or 20c. per doz.

CONTÉ CRAYONS.

(In Cedar, like Lead Pencils.)

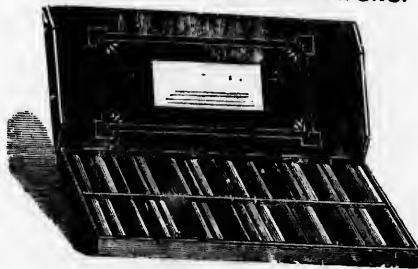
No. 0, Hard.....	each, 7c.
" 1, Firm.....	" 5c.
" 2, Soft.....	" 5c.
" 3, Very Soft.....	" 7c.

SAIICE CRAYONS.

Stumping Chalk, Wrapped in Tin Foil.

Conte Velvet Black for Stick.....	10c.
Givault's " " ".....	5c.

SOFT FRENCH PASTEL CRAYONS.



IN WHITE WOOD BOXES.

These Crayons being very fragile are liable to breakage. Their utility, however, is not impaired by their being in small pieces.

Box of 30 Sticks Assorted Colors.....	each, \$ 65
" " 42 " " ".....	" 95
" " 56 " " ".....	" 1 50
" " 75 " " ".....	" 2 75
" " 100 " " ".....	" 3 50

Materials for Drawing, Crayon and Pastel Work—Continued.

SEPARATE CRAYONS.

WHITE, BLACK, GRAY, BROWN, GREEN, FLESH.

Yellow and Blue.....	per stick,	5c.
Vermilion.....	"	10c.
Carmine, No. 2.....	"	25c.
Cobalt Blue.....	"	20c.

HARD, FRENCH PASTEL CRAYONS.

These Crayons are of the best quality. They work freely, and are rich in color. These boxes are carefully assorted and contain a large number of the finest tints.



WINSOR & NEWTON

SUPERFINE.

Box of 12 Crayons, assorted.....	each,	25c.
" " 18 " "	"	40c.
" " 24 " "	"	50c.

ORDINARY.

Box of 12 Crayons, assorted.....	each,	10c.
" " 18 " "	"	12½c.
" " 24 " "	"	15c.

THE "RAPHAEL."

SUPERFINE HARD PASTEL CRAYONS.



SIZE OF CRAYON.

These Colors are not so fragile as those in round boxes. They are indelible, and the colors are very strong.

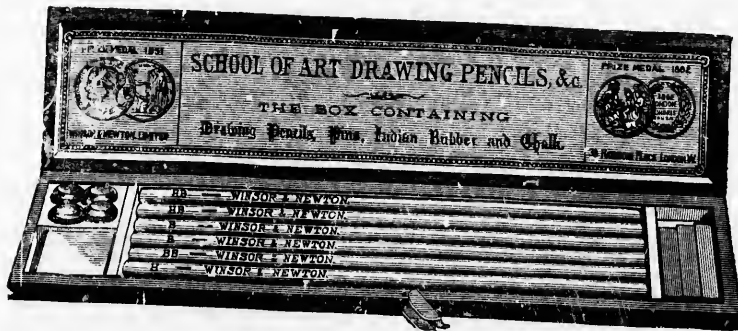
PUT UP IN SQUARE CARD BOXES.

Box of 6 Crayons, assorted.....	each,	5c.
" " 12 " "	"	10c.
" " 18 " "	"	15c.
" " 24 " "	"	20c.

E. N. HUNT,

*Materials for Drawing, Crayon and Pastel Work—Continued.***FRENCH CHARCOAL.**

No. 2 Small, in Boxes of 50 Sticks.....	per Box, 15c.
" 4 " " "	" 20c.
" 5 Large, " "	" 30c.
" 6 " " "	" 50c.

School of Art Drawing Pencils.

Same as above Illustration.

Price.....each, 45c.

ORDINARY DRAWING PENCILS.

ROUND, RED POLISHED CEDAR.

H..... Moderately hard (for light sketching).....	each, 5c.
F..... Firm (for fine drawing).....	" 5c.
H B..... Moderately hard, and black (for free sketching).....	" 5c.
B..... Black (for ordinary shading).....	" 5c.
B B..... Soft Black (for deep shading).....	" 5c.

India Ink.



SIZE NO. 4.



SIZE NO. 5.



SIZE NO. 8.

No. 2, Lion Oval	per Stick,	5c.
" 4, Double Dragon, fine gilt.....	"	10c.
" 5, Lion Oval	"	10c.
" 7, Extra fine, square, gilt.....	"	20c.
" 8, Super, super, square, black.....	"	75c.

ed.

OX, 15c.
20c.
30c.
50c.



45c.

5c.
5c.
5c.
5c.
5c.

E. N. HUNT,

Drawing Pins.

No. 1, Brass, small.....	per doz.	5c.
" 2, " medium.....	"	7c.
" 3, " large.....	"	10c.
" 4, " largest.....	"	15c.

"Best of All" Drawing Pins.

A perfect pin at last; no trouble withdrawing it from the Board; no broken nails or pen-knives.

Small Size.....	per doz.	25c.
Medium Size.....	"	28c.
Large Size.....	"	30c.

India Rubber.

MEDIUM SIZE.

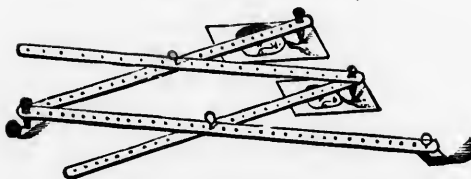
HARDMUTH'S RUBBERS.

Small, $\frac{3}{4}$ x $1\frac{1}{4}$	each,	5c.
Medium, 1 x $1\frac{1}{4}$	"	7c.
Large, 1 x $1\frac{1}{2}$	"	10c.

NIGRIVORINE (RUBBER STOMPS.)

No. 1, Small.....	each,	5c.
" 2, Medium.....	"	7c.
" 3, Large.....	"	10c.

Pantographs.



For Enlarging and Reducing Drawings.

Natural Wood.....	each,	\$ 25
Brass Mounted.....	"	1 50

Crayon Holders.



Ordinary Brass, 6 inches long.....	each,	5c.
Superior " " ".....	"	15c.
Best " " ".....	"	25c.
Nickel " " ".....	"	25c.

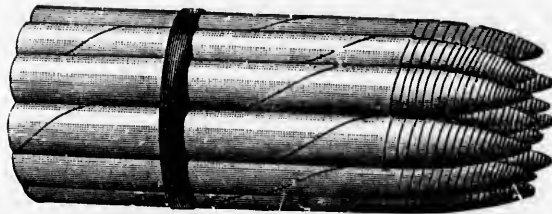
Chamois Stomps.



No. 1.....	each,	5c.
" 2.....	"	5c.
" 3.....	"	6c.
" 4.....	"	6c.
" 5.....	"	8c.
" 6.....	"	10c.
" 7.....	"	12c.
" 8.....	"	15c.

Best Paper Stomps.

No. 1.....	each,	1c.
" 2.....	"	1c.
" 3.....	"	2c.
" 4.....	"	2c.
" 5.....	"	3c.
" 6.....	"	3c.
" 7.....	"	5c.
" 8.....	"	5c.

Tortillon Paper Stomps.

Gray Paper, large.....	per Bundle, 10c.
White " ".....	" " 8c.

*Crayon and Drawing Paper.***CARTRIDGE PAPER.**

For Crayon and Pencil Drawings or rough Water Color Sketches.

Imperial White, 22 x 30.....	per Sheet, 5c.
" Tinted, ".....	" " 5c.

CRAYON PAPER.

Imperial White, 22 x 30.....	per Sheet, 10c.
" Tinted (12 tints).....	" " 10c.

CHARCOAL PAPER.

Mechallet White, 19 x 25.....	per Sheet, 5c.
" Assorted tints, 19 x 25.....	" " 5c.

PASTEL PAPERS.

Fine, Grey Tint, 22 x 30.....	per Sheet, 40c.
-------------------------------	-----------------

PASTEL BOARDS.

22 x 30.....	each, 40c.
--------------	------------

TRANSFER PAPER.

17½ x 22, White, Red, Black and Blue.....	per Sheet, 5c.
---	----------------

TRACING PAPER.

Finest Vegetable, 19½ x 25½.....	per Sheet, 15c.
Ordinary, in rolls, 40 inches wide.....	per Yard, 10c.

TRACING CLOTH.

The "Reliance" dull back only, in rolls of 24 yards.

30 in. wide.....	per yard, 30c.
40 " ".....	" " 40c.

Mathematical Instruments.

- No. 1.—HINGED WOODEN CASE, $2\frac{1}{2} \times 6$ inches, $3\frac{3}{4}$ inch divider, with pen and pencil points, leads, rule, protractor and saucer . . . each \$ 65
- No. 2.—HOOKED MAHOGANY BOX, $4 \times 6\frac{1}{4}$ inches, $4\frac{1}{2}$ inch divider, with hinged pen and pencil points and lengthening bar, $4\frac{1}{4}$ inch plain divider, drawing pen, rule, protractor and crayon holder. each 30
- No. 3.—SLIDE CARD BOARD BOX, velvet linings, $2 \times 6\frac{1}{2}$ inches, 5 inch divider, pen and pencil points, drawing pen, leads and rule each 55
- No. 4.—HINGED IMITATION LEATHER CASE, velvet linings, 2×6 inches, 5 inch pen and pencil point divider, leads, rule and ruling pen each 75
- No. 5.—HINGED IMITATION LEATHER CASE, $2\frac{3}{4} \times 6\frac{1}{2}$ inches, velvet linings, $4\frac{1}{2}$ inch divider, with hinged pen and pencil points, ebdny handle, drawing pen, leads, rule, protractor and saucer each 10
- No. 6.—HINGED IMITATION LEATHER CASE, $4\frac{1}{2} \times 6\frac{1}{2}$ inches, velvet linings, $4\frac{1}{2}$ inch divider, with 2 pen points, 2 pencil points, needle point and lengthening bar, $4\frac{1}{2}$ inch plain divider, drawing pens, leads, rules and protractor each 2 10
- No. 7.—HOOKED MAHOGANY BOX, $4 \times 8\frac{1}{2}$ inches, velvet linings, $5\frac{1}{2}$ inch divider, and 2 pen points, 2 pencil points, needle point and lengthening bar, $4\frac{1}{2}$ inch divider with pen and pencil points, $5\frac{1}{2}$ inch plain divider, drawing pen and protractor each 2 90
- No. 8.—LOCK POLISHED MAHOGANY BOX, $5\frac{1}{2} \times 10$ inches, velvet linings, with lifting tray, $5\frac{1}{2}$ inch divider, 2 pen points, 2 pencil points, needle point and lengthening bar, $4\frac{1}{2}$ inch divider, with pen and pencil points, $5\frac{1}{2}$ inch plain divider, steel spring bow pen large and small drawing pens and protractor each 4 60



No. 9.—Plain Divider, German Silver, 4¼ inches.....	each	\$ 25
" 10.— " " " 5½ "	"	30
" 11.—Pencil Point Divider, German Silver, 4¼ inches.....	"	30
" 12.—Divider, 5¼ inches, with pivot pencil point and pen point...	"	1 00
" 13.—Ruling or Drawing Pens, 4¼ inches.....	"	25
" 14.— " " " 5½ "	"	30

Gold, Silver and Copper Paint.

Bronze, in Bottles, with Liquid for mixing.....	each	10c.
Bronze, only, in small bottles.....	"	10c.
Liquid only, in tin bottles.....	"	20c.
"Columbia" Mixed, ready for use.....	"	20c.
Gold Leaf Substitute (Finest).....	"	25c.

Enamel Paint.

In Glass Jars.

Black, Vermilion, Flesh, Robins Egg Blue, Shell Pink, Silver Gray, Pure White, Light Yellow, Ivory White, Sea Green, Rose Pink, Emerald Green, Willow Green, Carmine	per Jar	25c.
--	---------	------

Bath Enamel.

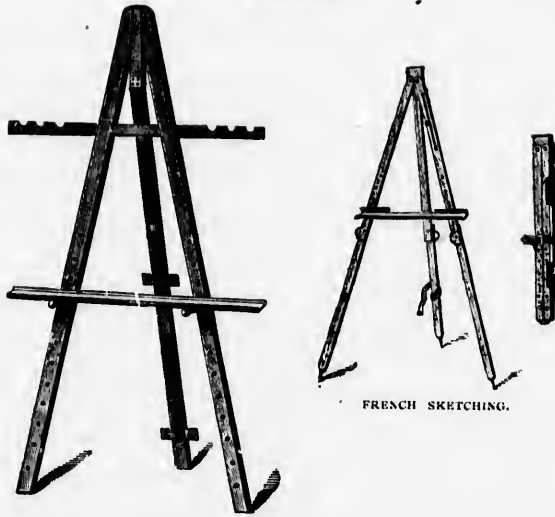
Will Stand Hot Water.

Tin Cans.....	per Can	40c.
---------------	---------	------

Polish.

Arnstein's French Metal Polish.....	per Can	25c.
" Venetian Furniture Polish.....	"	25c.

Easels.



FRENCH SKETCHING.

NO. 1 STUDIO.

- STUDIO EASEL, Plain Pin, very strong and firm, can be closed up into one straight piece, 6 feet high.....each \$1 00
 FRENCH SKETCHING EASEL, White Wood, firm and very light, 48 inches high, when closed, 27 inches in length, weight 22 ozs. each 1 00
 TABLE EASEL, Butternut, 17 inches high.....each 40

Sketching Stool.

- Round, when closed, 24 inches high.....each \$ 90
 Flat, " " " very firm " 1 00

Banner Rods.



RUSTIC.

- 8 inch.....each 15c.
 10 " " 20c.
 12 " " 25c.
 14 " " 30c.

h\$ 25
 30
 30
 1 00
 25
 30

1 10c.
 10c.
 20c.
 20c.
 25c.

25c.

40c.

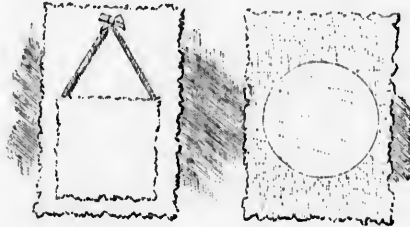
25c.
 25c.

Celluloid.

For decorating on Oil or Water Colors in Pale Blue, Pale Green, Pale Pink, Cream and White, in sheets 20 x 25 inches. per Sheet 75c.

Fancy Cards.

For Oil or Water Color Decorating.



No. 2.

No. 3.

- | | | | |
|---------|---|------|------|
| No. 1. | All white, ragged, ragged edge, $4\frac{1}{4} \times 7$ inches, smaller panel for decorating, attached with silk cord, round, square, or diamond shape. | each | 12c. |
| No. 2. | Same as No. 1, size $5\frac{1}{2} \times 8$ inches. | " | 15c. |
| No. 3. | All white, ragged edge, $5\frac{1}{2} \times 8$ inches, with circle or diamond centre for decorating. | each | 10c. |
| No. 4. | Thin, ragged edge, rough, $2\frac{1}{4} \times 4\frac{1}{2}$, assorted tints. | " | 2c. |
| No. 5. | " " " 4×4 " | " | 3c. |
| No. 6. | " " " $4\frac{1}{2} \times 6\frac{1}{2}$, " | " | 4c. |
| No. 7. | " " " $6\frac{1}{2} \times 8\frac{1}{2}$, " | " | 5c. |
| No. 8. | Thick, ragged edge, rough, 4×4 " | " | 4c. |
| No. 9. | " " " $4\frac{1}{2} \times 6\frac{1}{2}$ " | " | 6c. |
| No. 10. | " " " $5 \times 7\frac{1}{2}$ " | " | 8c. |
| No. 11. | " " " $6\frac{1}{2} \times 8\frac{1}{2}$ " | " | 10c. |

Hand Books on the Fine Arts.

These Hand Books are carefully prepared by people of note in the art world, and are full of useful information for either the artist or the amateur.

Price 30 cents each. Order by number only.

- No. 1. HALF HOUR LECTURES ON DRAWING AND PAINTING..... *Warren.*
with Seventeen Illustrations.
- " 2. THE ART OF SKETCHING FROM NATURE..... *Rowbotham.*
with Twenty-seven Illustrations.
- " 3. THE ART OF LANDSCAPE PAINTING IN WATER COLORS. *Rowbotham.*
- " 4. A SYSTEM OF WATER COLOR PAINTING..... *Penley.*
- " 5. THE ART OF MARINE PAINTING IN WATER COLORS..... *Carmichael.*
with Eighteen Illustrations.
- " 6. HINTS FOR SKETCHING IN WATER COLORS..... *Hatton.*
- " 7. PORTRAIT PAINTING IN WATER COLORS..... *Merrifield.*
- " 8. THE ART OF MINIATURE PAINTING..... *Day.*
with Fourteen Illustrations.
- " 9. THE ART OF FLOWER PAINTING IN WATER COLORS..... *Duffield.*
with Twelve Illustrations.
- " 10. THE ART OF LANDSCAPE PAINTING IN OIL COLORS..... *Williams.*
- " 11. THE ART OF PORTRAIT PAINTING IN OIL COLORS..... *Murray.*
- " 12. THE ART OF MARINE PAINTING IN OIL COLORS..... *Carmichael.*
with Sixteen Illustrations.
- " 13. THE ELEMENTS OF PERSPECTIVE..... *Penley.*
with Eleven Illustrations.
- " 14. THE ART OF BOTANICAL DRAWING..... *Burbridge.*
with Twenty Illustrations.
- " 15. A MANUAL OF ILLUMINATION..... *Bradley & Goodwin.*
with Illustrations.
- " 16. A COMPANION TO MANUAL OF ILLUMINATION..... *Laing.*
with Borders, Capitals, Texts and Detail Finishings.
- " 17. THE ART OF FIGURE DRAWING..... *Weigall.*
with Seventeen Illustrations.
- " 18. THE ARTISTIC TREATISE OF THE HUMAN FIGURE..... *Warren.*
with Illustrations.

75c.

12c.

15c.

10c.

2c.

3c.

4c.

5c.

4c.

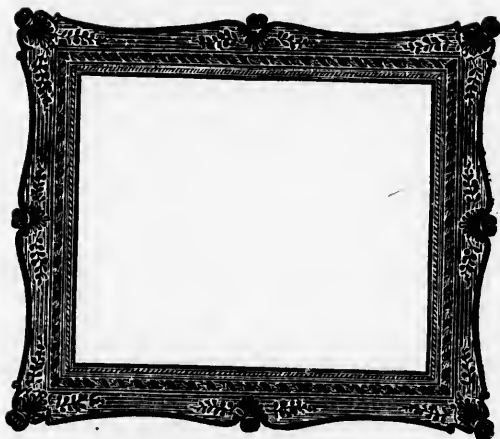
6c.

8c.

0c.

- No. 19. ARTISTIC ANATOMY OF THE HUMAN FIGURE..... *Warren*.
with Twenty-Three Illustrations.
- " 20. ARTISTIC ANATOMY OF THE DOG AND DEER..... *Hawkins*.
with Nine Illustrations.
- " 21. ARTISTIC ANATOMY OF THE HORSE..... *Hawkins*.
with Twenty-Four Illustrations.
- " 22. ARTISTIC ANATOMY OF CATTLE AND SHEEP..... *Hawkins*.
with Ten Illustrations.
- " 23. PAINTING AND DRAWING IN COLORED CRAYONS..... *Murray*.
- " 24. THE ART OF MURAL DECORATION..... *Goodwin*.
- " 25. TRANSPARENCY PAINTING ON LINEN..... *Williams*.
with Twelve Illustrations.
- " 26. PAINTING ON GLASS FOR MAGIC LANTERNS..... *Groom*.
with Illustrations.
- " 27. PRINCIPALS OF COLORING IN PAINTING..... *Martel*.
- " 28. PRINCIPALS OF FORM IN ORNAMENTAL ART..... *Martel*.
with Illustrations.
- " 29. THE ART OF WOOD ENGRAVING..... *Gilks*.
with Twenty-Three Illustrations.
- " 30. PRESERVATION OF PICTURES..... *Mogford*.
Practical instructions for cleaning, lining, repairing and
restoring Oil Paintings.
- " 31. DRAWING MODELS AND THEIR USES..... *Harding*.
with Numerous Illustrations.
- " 32. COMPARATIVE ANATOMY AS APPLIED TO THE USES OF
ARTISTS AND AMATEURS..... *Hawkins*.
Profusely Illustrated.
- " 33. THE ART OF ETCHING..... *Robertson*.
with Two Illustrations.
- " 34. THE ART OF CHINA PAINTING..... *Robertson*.
with Illustrations.
- " 35. THE RULES OF PERSPECTIVE..... *Runciman*.
with Numerous Illustrations.
- " 36. A DICTIONARY OF WATER COLOR TECHNIQUE..... *Wallis*.
- " 37. A MANUAL OF FLOWER PAINTING IN OIL COLORS..... *Muckley*.
with Three Colored Illustrations.
- " 38. A SHORT STUDY IN GOTHIC ARCHITECTURE..... *Parkes*.
with Thirty-Four Illustrations.
- " 39. FRUIT AND STILL LIFE PAINTING IN OIL AND WATER
COLORS..... *Muckley*.
with Three Colored Illustrations.
- " 40. PEN AND INK DRAWING..... *Robertson*.
with Twenty-One Illustrations.
- " 41. TREES AND HOW TO DRAW THEM..... *Delamotte*.
with Eight Illustrations.
- " 42. THE RUDIMENTS OF DECORATIVE ART..... *Davis*.
with Illustrations and Colored Plates.
- " 43. DESCRIPTION OF MODERN WATER COLORS..... *Taylor*.
showing actual Washes on Whatman's Paper.
- " 29A. DRAWING OR PAINTING WITH PASTEL CRAYONS..... *Sprinck*.
with Colored Illustrations.

Picture Framing.



A large assortment of the choicest designs of Mouldings always on hand. We keep in touch with all the new ideas on Picture Framing, and patrons may rely upon obtaining the most up-to-date Frames at very moderate prices.

Pictures.

A fine collection of Artotypes, Engravings, Oil, Water Color and Paste Paintings.

Wall Paper.

In this line we carry a very large and well selected assortment of Canadian and American designs from the lowest to the best grades manufactured. Samples mailed on application.

Copies.

A number of Pictures especially adapted for studies, such as Flower Pieces, Landscapes, Animals, etc., are kept in stock, and will be loaned for copying on the following conditions:

Studies valued at One Dollar or above will be let for ten per cent. of their value per week.

The price of the study must be paid at the time it is taken, and when the picture is returned, the amount paid, less our charges for rental, will be refunded. The charge for a day will be the same as for a week, and no loan will be made for less than ten cents. Damaged studies cannot be returned.

INDEX.

	Page.
Materials for Oil Painting—	
Artists' Easels.....	43
Academy Boards.....	6
Artists' Tinware.....	7-8
Artists' Prepared Canvas.....	9
Brushes for Oil Painting.....	12-16
Boxes for Oil Paints.....	5-6
Canvas Panels.....	10
Celluloid.....	44
Hand Books on Fine Arts.....	45-46
Keyed Stretchers.....	7
Moleskin Velvet.....	9
Oil Paints, Winsor & Newtons.....	3
" " Owl Brand.....	4-5
Oils and Varnishes.....	6
Oil Sketching Paper.....	7
Palette Knives.....	7
Placques.....	9-10
Placque Easels and Holders.....	11
Pfelger Patent Canvas Stretcher.....	8
Robertson's Medium.....	5
Rest or Mahl Sticks.....	11
Sketching Stools.....	43
Universal Stretcher Key.....	8
Wooden Palettes.....	11
Wood Panels.....	10
Materials for Water Color Painting—	
Acme Water Colors.....	24
Boxes of Moist Water Colors.....	21
Boxes for " " (Empty).....	22
Brushes for Water Color Painting.....	19-21
China Palettes, Slants, Etc.....	22-24
Fancy Cards for Decorating.....	44
Handles for Quill Brushes.....	21
Hand Books on Fine Arts.....	45-46
Papers for Water Color Painting.....	25
Sketch Blocks and Books.....	26
Water Colors, Winsor & Newtons.....	16-17
Water Color (Students).....	17
" Color Liquids and Mediums.....	18
Materials for China Painting—	
Boxes for China Colors.....	33
Brushes for China Painting.....	30-31
Color Slabs.....	32
Glass Mullers.....	32
Hand Books on Fine Arts.....	45-46
Lacroix Colors for China.....	27-28
Oils and Mediums.....	29
Prepared Gold.....	29
Plate Glass Slabs.....	32
Materials for Drawing, Crayon and Pastel Work—	
Atomizers.....	33
Crayons, Conte.....	34
Crayon, Sauce.....	34
Crayons, Pastel.....	34-35
Charcoal.....	36
Crayon Holders.....	39
Drawing Pencils.....	36
Drawing Pins.....	38
Gold and Silver Shells and Saucers.....	29
Hand Books on Fine Arts.....	45-46
India Ink.....	37
India Rubber.....	38
Mathematical Instruments.....	41-42
Pantographs.....	39
Papers for Crayon and Drawing.....	40
Stomps.....	39-40
Tracing Cloth.....	40
Miscellaneous—	
Banner Rods.....	43
Enamel Paint.....	42
" " (Bath).....	42
Copies.....	47
Gold, Silver and Copper Paint.....	42
Polish for Metal and Furniture.....	42
Picture Framing.....	47
Pictures.....	47
Wall Paper.....	47

Page.
...17
...18
ing—
...33
30-31
...32
...32
45-46
27-28
...29
...29
...32
n
...33
...34
...34
4-35
...36
...39
...36
...38
s 29
5-46
...37
...38
-42
...39
...40
...40
...40
43
42
42
47
42
42
47
47
47

