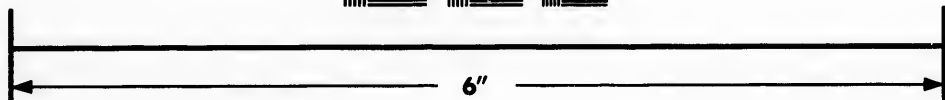
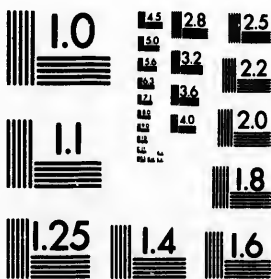


**IMAGE EVALUATION
TEST TARGET (MT-3)**



**Photographic
Sciences
Corporation**

23 WEST MAIN STREET
WEBSTER, N.Y. 14580
(716) 872-4503

1.5
1.8
2.0
2.2
2.5
2.8
3.2
3.6
4.0

**CIHM/ICMH
Microfiche
Series.**

**CIHM/ICMH
Collection de
microfiches.**



Canadian Institute for Historical Microreproductions / Institut canadien de microreproductions historiques

1.5
1.8
2.0
2.2
2.5
2.8
3.2
3.6
4.0

© 1987

Technical and Bibliographic Notes/Notes techniques et bibliographiques

The Institute has attempted to obtain the best original copy available for filming. Features of this copy which may be bibliographically unique, which may alter any of the images in the reproduction, or which may significantly change the usual method of filming, are checked below.

L'Institut a microfilmé le meilleur exemplaire qu'il lui a été possible de se procurer. Les détails de cet exemplaire qui sont peut-être uniques du point de vue bibliographique, qui peuvent modifier une image reproduite, ou qui peuvent exiger une modification dans la méthode normale de filmage sont indiqués ci-dessous.

- | | |
|--|--|
| <input type="checkbox"/> Coloured covers/
Couverture de couleur | <input type="checkbox"/> Coloured pages/
Pages de couleur |
| <input type="checkbox"/> Covers damaged/
Couverture endommagée | <input checked="" type="checkbox"/> Pages damaged/
Pages endommagées |
| <input type="checkbox"/> Covers restored and/or laminated/
Couverture restaurée et/ou pelliculée | <input type="checkbox"/> Pages restored and/or laminated/
Pages restaurées et/ou pelliculées |
| <input type="checkbox"/> Cover title missing/
Le titre de couverture manque | <input checked="" type="checkbox"/> Pages discoloured, stained or foxed/
Pages décolorées, tachetées ou piquées |
| <input type="checkbox"/> Coloured maps/
Cartes géographiques en couleur | <input type="checkbox"/> Pages detached/
Pages détachées |
| <input type="checkbox"/> Coloured ink (i.e. other than blue or black)/
Encre de couleur (i.e. autre que bleue ou noire) | <input checked="" type="checkbox"/> Showthrough/
Transparence |
| <input type="checkbox"/> Coloured plates and/or illustrations/
Planches et/ou illustrations en couleur | <input type="checkbox"/> Quality of print varies/
Qualité inégale de l'impression |
| <input type="checkbox"/> Bound with other material/
Relié avec d'autres documents | <input type="checkbox"/> Includes supplementary material/
Comprend du matériel supplémentaire |
| <input type="checkbox"/> Tight binding may cause shadows or distortion
along interior margin/
La reliure serrée peut causer de l'ombre ou de la
distorsion le long de la marge intérieure | <input type="checkbox"/> Only edition available/
Seule édition disponible |
| <input type="checkbox"/> Blank leaves added during restoration may
appear within the text. Whenever possible, these
have been omitted from filming/
Il se peut que certaines pages blanches ajoutées
lors d'une restauration apparaissent dans le texte,
mais, lorsque cela était possible, ces pages n'ont
pas été filmées. | <input type="checkbox"/> Pages wholly or partially obscured by errata
slips, tissues, etc., have been refilmed to
ensure the best possible image/
Les pages totalement ou partiellement
obscurcies par un feuillet d'errata, une pelure,
etc., ont été filmées à nouveau de façon à
obtenir la meilleure image possible. |
| <input checked="" type="checkbox"/> Additional comments:/
Commentaires supplémentaires: | |

Item is damaged and some material is missing.
[Printed Ephemera] 1 sheet [60] p.

This item is filmed at the reduction ratio checked below/
Ce document est filmé au taux de réduction indiqué ci-dessous.

10X	14X	18X	22X	26X	30X
<input type="checkbox"/>	<input type="checkbox"/>	<input type="checkbox"/>	<input checked="" type="checkbox"/>	<input type="checkbox"/>	<input type="checkbox"/>
12X	16X	20X	24X	28X	32X

The copy filmed here has been reproduced thanks to the generosity of:

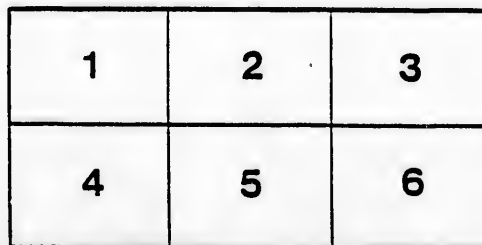
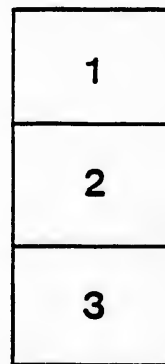
Archives of Ontario
Toronto

The images appearing here are the best quality possible considering the condition and legibility of the original copy and in keeping with the filming contract specifications.

Original copies in printed paper covers are filmed beginning with the front cover and ending on the last page with a printed or illustrated impression, or the back cover when appropriate. All other original copies are filmed beginning on the first page with a printed or illustrated impression, and ending on the last page with a printed or illustrated impression.

The last recorded frame on each microfiche shall contain the symbol \rightarrow (meaning "CONTINUED"), or the symbol ∇ (meaning "END"), whichever applies.

Maps, plates, charts, etc., may be filmed at different reduction ratios. Those too large to be entirely included in one exposure are filmed beginning in the upper left hand corner, left to right and top to bottom, as many frames as required. The following diagrams illustrate the method:



L'exemplaire filmé fut reproduit grâce à la générosité de:

Archives of Ontario
Toronto

Les images suivantes ont été reproduites avec le plus grand soin, compte tenu de la condition et de la netteté de l'exemplaire filmé, et en conformité avec les conditions du contrat de filmage.

Les exemplaires originaux dont la couverture en papier est imprimée sont filmés en commençant par le premier plat et en terminant soit par la dernière page qui comporte une empreinte d'impression ou d'illustration, soit par le second plat, selon le cas. Tous les autres exemplaires originaux sont filmés en commençant par la première page qui comporte une empreinte d'impression ou d'illustration et en terminant par la dernière page qui comporte une telle empreinte.

Un des symboles suivants apparaîtra sur la dernière image de chaque microfiche, selon le cas: le symbole \rightarrow signifie "A SUIVRE", le symbole ∇ signifie "FIN".

Les cartes, planches, tableaux, etc., peuvent être filmés à des taux de réduction différents. Lorsque le document est trop grand pour être reproduit en un seul cliché, il est filmé à partir de l'angle supérieur gauche, de gauche à droite, et de haut en bas, en prenant le nombre d'images nécessaire. Les diagrammes suivants illustrent la méthode.

IN EFFECT OCT. 29th, 1888.



JOSEPH HICKSON,
General Manager.
WM. WAINWRIGHT,
Assistant Manager.

L. J. SEARGEANT,
Traffic Manager.
WM. EDGAR,
Gen'l Pass. Agent.

GRAND TRUNK RAILWAY COMPANY

SPECIAL INFORMATION.

Ticket Offices at all important stations are open twenty minutes before the advertised departure of passenger trains, and passengers are respectfully requested to purchase tickets and get their baggage checked before taking seats in such trains.

Passengers should always procure their tickets at regular Railway Ticket Offices, and, as the Railway Companies are not responsible for lost tickets, all possible precaution should be taken to prevent their being lost. When purchasing tickets, always make a memorandum of the "Form Number," "Consecutive Number," "Where and by what Railway issued," "Date issued," and "Destination;" and if baggage is checked, take a record of the number of the baggage check and the name of the station checked from. This will aid in the recovery of the tickets or baggage if lost or miscarried.

Common Tickets to all important points in Canada and the United States are for sale at the principal Ticket Offices of this Company and passengers desiring to purchase the same should in all cases designate over which connecting line or lines they desire to travel.

Single Trip Tickets, of all classes, are valid for passage only in the direction printed. **Round Trip Tickets**, 1st Class, valid one month from date of issue, are for sale at reduced fares between stations on the Grand Trunk Railway. They are not transferable, and are **not good to stop over** at any intermediate station.

Stop-over Checks, good for thirty days, will be issued on application to conductors on regular first-class single tickets. Limited first and second class tickets are good only for continuous passage and do not entitle holder to stop over.

Children, under the age of five years, will be carried free on the Grand Trunk Railway when accompanied. From five to twelve years of age, at half the adult fare. All over twelve years of age must pay adult fare.

Personal Baggage, consisting of wearing apparel, when not exceeding one hundred and fifty pounds for each full ticket and seventy-five pounds for each half ticket, will be checked free and carried on passenger trains, providing the same is securely enclosed in trunks, chests, valises, or in such a form as to be conveniently checked. Passengers from Canada destined to points in the United States can have their baggage checked through and examined by the U.S. Customs Officers at Montreal, Prescott, Toronto, Stratford or London, as may be most convenient, thereby saving all trouble and annoyance at the frontier. All baggage should be addressed. Personal baggage in excess of 150 lbs. for each adult ticket will be charged for in accordance with tariff furnished Agents, but any piece of baggage weighing more than 250 lbs. will not be checked or accepted for transportation in baggage car. Passengers paying for excess baggage should see they receive an "Excess Baggage" receipt, which must be delivered to the Agent with the checks when the baggage is claimed. To avoid inconvenience, and possible detention, passengers with baggage are requested to purchase tickets at least fifteen minutes before advertised leaving time of train on which it is the intention to take passage, as the rules of the Company require baggage Agents to examine tickets before checking baggage. Notice is hereby given that the Grand Trunk Ry. is not responsible for the loss of unchecked baggage or parcels left at stations or in cars.

Storage of Baggage.—On all baggage not claimed within 24 hours after its arrival, storage charges will be collected at the rate of ten cents each piece per week or part of a week.

Bicycles and Baby Carriages will be checked to stations on the Grand Trunk Railway as personal baggage, at owner's risk, estimating the weight of the former at 150 lbs. each, and the latter at 75 lbs. each, but not more than one bicycle or baby carriage will be checked on each ticket.

Dogs provided with a suitable collar and chain to secure them will be carried in the baggage car, at owner's risk, between stations on the Grand Trunk Railway. The charge for each dog, except under the special arrangement provided for Sportsmen, will be the same as for 100 lbs. excess baggage.

Corpses, whether of infants or adults, will be carried in the baggage car at regular first-class adult fare, when in good condition, properly cased and accompanied by a passenger travelling on the same train, who must see to the transferring of the same, whenever necessary, and present a certificate from a qualified physician to show that death did not result from any infectious disease. A free allowance of 150 lbs. baggage will be made for each corpse.

Sportsmen.—The facilities for sport of every description offered by this Company are unequalled. Among the localities reached directly by its lines are Muskoka, Midland, Lake St. John and Rangeley Lake districts. Guide books, containing much valuable information, will be furnished free on application to the General Passenger Agent. Reduced fares are made between certain stations for sportsmen in parties of five or more travelling together on the going journey on hunting or fishing expeditions, full particulars of which can be obtained on application to the General Passenger Agent, or to any of the Company's ticket agents. Two hundred pounds baggage, consisting of wearing apparel and sportsman's outfit, such as tents, camp utensils, etc., including a fish or game catch of 50 lbs. in weight, will be carried free for each bona fide sportsman, **WHETHER TRAVELING ALONE OR WITH A PARTY**. One dog will be carried free, in the baggage car, for each sportsman, but all dogs in excess of this allowance will be charged for at regular rates. Guns in wooden, canvas or leather cases may be taken into passenger cars, but if not so protected they must be conveyed in the baggage car at owner's risk.

Dining Cars are run between Suspension Bridge and Detroit, over the Southern Division, furnishing the best and most elaborate meals at reasonable prices, on the European plan.

Mileage Books, good between all of the Company's stations in the Dominion of Canada and in the States of New York, Vermont, New Hampshire and Maine, are on sale at a rate of \$25 for 1000 miles. These books contain 1000 coupons, representing one mile each and are valid for one year from date of issue. They are only good for the passage of the person whose signature appears on them and are absolutely non-transferable. The coupons will not be accepted for passage on the trains, but must be exchanged by the Ticket Agent for a passage ticket before entering the train. They entitle holders to the ordinary allowance of personal baggage.

Commutation and Season Tickets, good for passage between two given stations, are on sale at greatly reduced fares. Full particulars can be obtained on application to the General Passenger Agent, or to any Ticket Agent of the Company.

GRAND TRUNK RAILWAY COMPANY

SPECIAL INFORMATION—C

Refreshment Rooms, where ample time is allowed meals comfortably, are situated at Portland, Gorham, Island P. Cornwall, Kingston Junction, Cobourg, Blackham Junction, Gravenhurst, Muskoka Wharf, Hamilton, Niagara Falls, Stratford, Chatham and Point Edward.

A Special Car will be reserved for the exclusive use of passengers on more first-class or twenty-five or more second-class tickets at

Mixed Trains are at all times subject to be cancelled without notice.
Time Standard.—The trains of the Grand Trunk Railway run on Standard Time as far West as Sarnia and Windsor. Central Standard Time, Fort Gratiot, and points West.

Connecting Transportation Companies' Tickets, in connection with through passengers and every care is taken to keep the Grand Trunk Railway Company do not hold themselves responsible for

In Cases of Dispute with conductors or agents, passengers should demand, take a receipt for the same, and communicate with the Ticket Agent, who will cheerfully and promptly refund any overcharge.

All Information respecting train connections at Junctions, through fares, etc., will be cheerfully given on application to the Ticket Agent or to any Ticket Agent of the Company.

Explanation of Marks used generally in this folder: stop only on signal. † Daily, except Sunday. ‡ Daily, except Monday. a Daily. b Daily, except Monday.

SLEEPING, PARLOR AND DINING

Montreal and Halifax.—Via Grand Trunk and International Sleeping Cars (operated in connection with the Sleeping Cars of the Grand Trunk Railway) leave Montreal at 10.15 p.m. and Halifax at 6.00 p.m. on Monday.

Montreal and St. John.—Via Grand Trunk and International Sleeping Cars (operated in connection with the Sleeping Cars of the Grand Trunk Railway) leave Montreal at 10.15 p.m. and St. John at 10.15 p.m. on Tuesday and Saturday's cars lay over at Point Levi and Campbellton until

Montreal and Point Levi (Quebec).—Via Grand Trunk and International Sleeping Cars leave Montreal at 8.00 a.m. and Point Levi at 2.00 p.m. on Monday and Tuesday. Sleeping Cars leave Montreal at 10.15 p.m. and Point Levi at 8.30 p.m.

Montreal and Springfield.—Via Grand Trunk and International Sleeping Cars leave Montreal at 8.15 p.m. daily, except Sundays.

Montreal and New York.—Via Grand Trunk, Central and Rutland, Fitchburg, and New York Central & Hudson River leave Montreal at 4.30 p.m. and New York at 6.30 p.m. daily.

Montreal and New York.—Via Grand Trunk, Delaware and Hudson River Railways.—Parlor Cars and New York at 8.00 a.m. daily except Sunday. Sleeping Cars and New York at 6.30 p.m. daily, Sundays included.

Montreal and Boston.—Via Grand Trunk, Central and Boston & Maine (B. & L. system) Railways.—Parlor Cars and Boston at 8.30 a.m. daily, except Sundays. Sleeping Cars and Boston at 7.00 p.m. daily, Sundays included.

Montreal and Chicago.—Via Grand Trunk and International Sleeping Cars leave Montreal at 9.05 a.m. daily, at 8.15 p.m. daily, except Saturday.

Boston, Montreal and Chicago.—Via Boston Concord, Northern, Central Vermont, Grand Trunk, and Chicago and Montreal. Sleeping Cars leave Boston at 1.00 p.m. daily, except Sunday, Toronto 1.00 p.m. Returning leave Chicago at 3.25 p.m. Toronto 8.20, Montreal 8.30 p.m. Saturday's car from Boston on Sunday, and runs via Southern Division; Saturday's car from Montreal, and lays over at Toronto until 8.25 p.m. Sunday, at Monday.

NOTE—A Sleeping Car leaves Montreal Sundays at 8.25 p.m.

Portland and Montreal.—Via Grand Trunk Railway (operated in connection with the Sleeping Cars of the Grand Trunk Railway) leave Portland 8.45 a.m. and Montreal 8.00 p.m. Sleeping Cars leave Portland at 1.30 p.m. and Montreal 8.00 p.m. Saturday night's car from Montreal lays over at Monday.

Montreal and Ottawa.—Via Grand Trunk and International Sleeping Cars leave Montreal at 8.50 a.m. and 4.30 p.m. daily, except Sundays.



INFORMATION—Continued.

where ample time is allowed for passengers to partake of at Portland, Gorham, Island Pond, Richmond, Montreal, Cobourg, Blackwater Junction, Toronto, Allandale, Hamilton, Niagara Falls, Stratford, Palmerston, London,

reserved for the exclusive use of parties who purchase eighteen or more second-class tickets at regular fares.

times subject to be cancelled without notice.

trains of the Grand Trunk Railway are run on Eastern Standard Time from Toronto, Central Standard Time from Montreal,

Transportation Companies' Time is published for the convenience of every care is taken to keep it correct; but the Grand Trunk Railway holds themselves responsible for any errors or omissions.

Travel agents, conductors or agents, passengers should pay the fare in full at the same, and communicate with the General Passenger Agent for a prompt refund any overcharge.

Trains connecting at Junction or Terminal Stations; for full particulars apply to the General Passenger Agent at the Company.

Trains used generally in this folder: — Flag stations; trains not used except Sunday. † Daily, except Saturday. ‡ Saturdays except Monday.

CAR AND DINING CAR SERVICE.

Montreal and Toronto.—Via Grand Trunk and Intercolonial Railways.—Sleeping Cars with the Sleeping Cars of the Intercolonial Railway and Halifax at 6.00 p.m. on Mondays, Wednesdays and Fridays.

Montreal and Toronto.—Via Grand Trunk and Intercolonial Railways.—Sleeping Cars with the Sleeping Cars of the Intercolonial Railway leave Montreal at 10.15 p.m. on Tuesdays, Thursdays and Saturdays. Return Montreal at 8.30 p.m. on Monday morning.

Montreal (Quebec).—Via Grand Trunk Railway.—Parlor Cars and Point Levi at 2.00 p.m. daily, except Sunday. Sleeping Cars at 8.30 p.m. daily, except Sunday.

Montreal and Springfield.—Via Grand Trunk, Central Vermont and Connecting Car leave Montreal at 8.30 p.m. and Springfield at 10.00 p.m.

Montreal and New York.—Via Grand Trunk, Central Vermont, Bennington and New York Central & Hudson River Railways.—Sleeping Cars leave Montreal at 6.30 p.m. daily, Sundays included.

Montreal and New York.—Via Grand Trunk, Delaware & Hudson Canal, and New York Central & Hudson River Railways.—Parlor Cars leave Montreal at 8.20 a.m. daily, except Sunday. Sleeping cars leave Montreal at 4.30 p.m. daily, Sundays included.

Montreal and New York.—Via Grand Trunk, Central Vermont, Northern, Connecticut & L. system Railways.—Parlor Cars leave Montreal at 8.30 a.m. daily, except Sundays. Sleeping cars leave Montreal at 8.30 p.m. daily, Sundays included.

Montreal and Chicago.—Via Grand Trunk, and Chicago & Grand Trunk Railway leave Montreal at 9.05 a.m. daily, except Sunday, and Chicago at 12.00 p.m.

Montreal and Chicago.—Via Boston & Maine (B. & L. system), Central Vermont, Grand Trunk, and Chicago & Grand Trunk Railway leave Montreal at 1.00 p.m. daily, except Sunday, Montreal 11.50 p.m. returning leave Chicago at 3.25 p.m. daily, Sundays included.

Montreal and Chicago.—Via Grand Trunk, and Chicago & Grand Trunk Railway leave Montreal at 1.00 p.m. daily, except Sunday, Montreal 11.50 p.m. returning leave Chicago at 3.25 p.m. daily, Sundays included.

Montreal and Chicago.—Via Grand Trunk, and Chicago & Grand Trunk Railway leave Montreal at 1.00 p.m. daily, except Sunday, Montreal 11.50 p.m. returning leave Chicago at 3.25 p.m. daily, Sundays included.

Montreal and Chicago.—Via Grand Trunk, and Chicago & Grand Trunk Railway leave Montreal at 1.00 p.m. daily, except Sunday, Montreal 11.50 p.m. returning leave Chicago at 3.25 p.m. daily, Sundays included.

Montreal and Chicago.—Via Grand Trunk, and Chicago & Grand Trunk Railway leave Montreal at 1.00 p.m. daily, except Sunday, Montreal 11.50 p.m. returning leave Chicago at 3.25 p.m. daily, Sundays included.

Montreal and Chicago.—Via Grand Trunk, and Chicago & Grand Trunk Railway leave Montreal at 1.00 p.m. daily, except Sunday, Montreal 11.50 p.m. returning leave Chicago at 3.25 p.m. daily, Sundays included.

Montreal and Chicago.—Via Grand Trunk, and Chicago & Grand Trunk Railway leave Montreal at 1.00 p.m. daily, except Sunday, Montreal 11.50 p.m. returning leave Chicago at 3.25 p.m. daily, Sundays included.

Montreal and Chicago.—Via Grand Trunk, and Chicago & Grand Trunk Railway leave Montreal at 1.00 p.m. daily, except Sunday, Montreal 11.50 p.m. returning leave Chicago at 3.25 p.m. daily, Sundays included.



CAR SERVICE—Continued.

Montreal and Toronto.—Via Grand Trunk Railway.—Sleeping Cars leave Montreal at 8.25 p.m. and 11.50 p.m. Returning leave Toronto at 8.20 a.m. and 8.25 p.m. daily, except Sundays. On Sundays, Sleeping cars leave Montreal at 8.25 p.m. and Toronto at 8.25 p.m.

Ottawa and Toronto.—Via Canadian Pacific and Grand Trunk Railways.—Sleeping Cars leave Ottawa at 8.30 p.m. and Toronto at 8.25 p.m. daily, Sundays included.

Toronto and Detroit.—Via Grand Trunk Railway.—Sleeping Cars leave Toronto at 11.30 p.m. daily, except Sunday, and Detroit at 11.00 p.m. daily, Sundays included.

NORTHERN AND NORTHWESTERN DIVISION.

Toronto and North Bay.—Via Grand Trunk Railway.—Sleeping cars leave Toronto (Union Depot) at 11.00 p.m. daily, except Sunday, and North Bay at 7.00 p.m. daily, except Saturday. At North Bay passengers connect with the through Sleeper, via Canadian Pacific Railway, to and from the Northwest and Vancouver.

Toronto and Muskoka Wharf.—Parlor Cars leave Toronto at 8.05 a.m. Returning leave Muskoka Wharf at 2 p.m. daily except Sunday.

Toronto and Gravenhurst.—Via G. T. Ry.—Composite cars leave Toronto at 11.00 p.m. daily, except Sat. and Sun., returning leave Gravenhurst at 2.45 p.m. daily, except Sunday and Monday. On Sundays leaves Gravenhurst for Toronto at 11.50 p.m.

MIDLAND DIVISION.

Peterboro' and Toronto.—Via Grand Trunk Railway. Parlor Cars leave Peterboro' at 8.20 a.m. and Toronto at 4.35 p.m. daily, except Sunday.

SOUTHERN DIVISION—EASTBOUND.

No. 52, Limited Express (Daily)—Leaves Detroit 12 midnight and Point Edward 3.05 a.m. Has Sleeping Cars Chicago to Philadelphia, via C. & G. T.; G. T.; N. Y. L. E. & W.; Lehigh Valley and Phila. and Reading Railways; Chicago to New York, via C. & G. T.; G. T. and W. S. Railways. Chicago to New York, via Short Line, G. T. and West Shore Railways; Detroit to Rochester via G. T. and N. Y. C. & H. R. Railways. Through coaches Chicago to Suspension Bridge via Short Line and G. T. Railways. Chicago to Buffalo, via C. & G. T., G. T. and West Shore Railways.

No. 56, Atlantic Express (Daily)—Leaves Detroit 6.25 a.m. and Point Edward 9.40 a.m. Has Sleeping Cars Chicago to New York, via C. & G. T.; G. T. and W. S. Railways. Chicago to Boston, via Short Line, G. T., W. S., and Fitchburg Railways. Chicago to Boston, via C. & G. T., G. T., W. S. and Fitchburg Railways. Through coaches Chicago to Suspension Bridge via Short Line and G. T. Railways; Chicago to Buffalo, via C. & G. T., G. T., and West Shore Railways. Dining Car, Windsor to Hamilton.

No. 54, St. Louis Express (Daily)—Leaves Detroit 12.05 p.m. Has Sleeping Cars St. Louis to Buffalo, via Wabash, Wab. West, G. T. and West Shore Railways. Toronto to New York, via G. T. and West Shore Railways, leaving Toronto 5.00 p.m. daily except Sunday; on Sundays at 12.20 p.m. Parlor Car Detroit to Suspension Bridge, Dining Car Hamilton to Suspension Bridge.

Hamilton to Toronto.—Via Grand Trunk Railway. Parlor Cars leave Hamilton at 9.05 a.m., 12.25 p.m. and 2.15 p.m. daily, except Sunday; also at 6.40 p.m. daily, Sunday included.

SOUTHERN DIVISION—WESTBOUND.

No. 51, Chicago Express (Daily)—Leaves Buffalo (N. Y. C. Depot) 11.50 p.m., and Suspension Bridge 12.50 a.m. Has Sleeping Cars New York to Chicago via West Shore, G. T. and C. & G. T. Railways; Rochester to Detroit via N. Y. C. & H. R. and G. T. Railways. Through coach Buffalo to Chicago via West Shore, G. T. and C. & G. T. Railways.

No. 53, St. Louis Express (Daily)—Leaves Buffalo (N. Y. C. Depot) 6.42 a.m. and Suspension Bridge 7.45 a.m. Has Sleeping Car New York to Chicago, via West Shore, G. T. and Short Line; Boston to Chicago, via Fitch., W. S., G. T. and Short Line. Buffalo to St. Louis, via West Shore, G. T., Wab. West, and Wabash Railways. Through coach Suspension Bridge to Chicago, via G. T. and Short Line. Dining Car Niagara Falls to Hamilton.

No. 55 Pacific Express (Daily)—Leaves Buffalo (N. Y. C. Depot) at 12.40 p.m. and Suspension Bridge at 2.25 p.m. Has Sleeping Car Philadelphia to Chicago, via Phila. & Reading, Lehigh Valley, N. Y. L. E. & W.; G. T. and C. & G. T. Railways; New York to Chicago, via West Shore, G. T. and C. & G. T. Railways; Boston to Chicago via Fitch., West Shore, G. T. and C. & G. T. Railways; New York to Toronto via West Shore and G. T. Railways. Through coaches Suspension Bridge to Chicago via G. T. and Short Line. Buffalo to Chicago, via W. S., G. T. and C. & G. T. Railways. Dining Car Suspension Bridge to Windsor.

Toronto to Hamilton.—Via Grand Trunk Railway. Parlor Cars leave Toronto at 8.10 a.m., 2.50 p.m. and 5.00 p.m. daily, except Sunday; also at 12.20 p.m., daily, Sundays included.

GRAND TRUNK RAILWAY

SLEEPING AND PARLOR CAR TARIFF

FOR ONE BERTH IN SLEEPING CAR BETWEEN

Montreal and Halifax	\$5.00
Montreal and St. John	4.50
Montreal and Point Levi (Quebec)	1.50
Montreal and Springfield	2.00
Montreal and New York	2.00
Montreal and Boston	2.00
Boston and Chicago via Montreal	5.50
Portland and Chicago via Montreal	5.50
Boston and Chicago via Buffalo	5.50
New York and Chicago via Buffalo	5.00
Boston and St. Louis via Buffalo	6.50
Boston and Detroit via Buffalo	4.50
New York and Detroit via Buffalo	3.50
Montreal and Chicago	5.00
Toronto and Chicago	3.00
Portland and Montreal	2.00
Montreal and Toronto	2.00
Ottawa and Toronto	2.00
Toronto and North Bay	2.00
Toronto and Detroit	2.00
Toronto and Kingston Wharf	2.00
Suspension Bridge and Kingston Wharf	2.50
Rochester and Detroit	2.00
Buffalo and Detroit	2.00
Buffalo and Chicago	3.00
Detroit and Chicago	3.00
Buffalo and St. Louis	4.00
Chicago and St. Paul	2.00
Chicago and Kansas City	2.50
Chicago and Council Bluffs	2.50
Chicago and St. Louis	2.00
Chicago and Los Angeles	16.50
Chicago and San Francisco	16.50
Chicago and Portland, Ore.	15.50

FOR ONE SEAT IN PARLOR CAR BETWEEN

Boston and Montreal	\$1.50
Portland and Montreal	1.50
Montreal and Point Levi (Quebec)	.75
Montreal and St. Flavie	1.25
Montreal and Ottawa	.50
Montreal and Toronto	1.00
Toronto and Muskoka Wharf	.50
Toronto and Barrie	.25
Peterboro and Toronto	.25
Toronto and Hamilton	.25
Suspension Bridge and Detroit	1.00
Hamilton and Detroit	.75
Hamilton and Suspension Bridge	.25
Suspension Bridge and London	.50

Intermediate points in proportion. Double the Berth fare is charged for a Section.

Accommodation in Sleeping and Parlor Cars will only be sold to holders of first class tickets.

Agents of the Grand Trunk Railway at the undermentioned points hold diagrams of Sleeping and Parlor Cars, and will reserve accommodation on application by letter or telegraph. Such applications should state clearly the number of berths or sections required, from and to what points, by what train and route, and the date of starting.

W. C. TALLMAN	No. 280 Washington street, Boston, Mass.
W. D. O'BRIEN	No. 143 St. James street, Montreal, P. Q.
J. MCCONNIE	Windsor Hotel, Montreal, P. Q.
A. H. TAYLOR	Balmoral Hotel, Montreal, P. Q.
J. LAWLOR	Russell House Block, Ottawa, Ont.
T. D. SHIPMAN	City Ticket Agent, Portland, Me.
P. J. SLATTER	No. 50 York street, Toronto, Ont.
"	Corner King and Yonge streets, Toronto, Ont.
W. JARMAN	Depot Ticket Agent, Toronto, Ont.
L. DRAGO	Depot Ticket Agent, Niagara Falls, Ont.
W. G. WEBSTER	Depot Ticket Agent, Hamilton, Ont.
W. T. VANSTON	Depot Ticket Agent, London, Ont.
E. J. PIERCE	City Ticket Agent, Detroit, Mich.
E. B. CLARK	Depot Ticket Agent, Detroit, Mich.
F. M. POMEROV	Depot Ticket Agent, Port Huron, Mich.

GRAND TRUNK RAILWAY

CONNECTIONS

1. ACTONVALE, P. Q.—With Can. Pac. Ry. (A);
2. AGINCOURT, Ont.—With Can. Pac. Ry. (A);
3. ALLANBURG JCT., Ont.—Junction Welland Division
4. ALLANDAILE, Ont.—With Main Lines N. & N. W. Simcoe Branches.
5. ALLENFORD, Ont.—With stage for Owen Sound.
6. ALLISTON, Ont.—With stage for Rosemont.
7. ARTHURASKA, P. Q.—Junction Three Rivers and Quebec
8. ATHERLEY, Ont.—With Main Lines Midland Division ()
9. AUBURN, Me.—With Me. Cent. Ry. (A); and stage
10. AURORA, Ont.—With stage for Kettleby, Lloydtown
15. BARRIE, Ont.—With steamers for Lakes Simcoe and Hillsdale.
16. BARRINGTON, P. Q.—With Can. Atlantic Ry. (A);
17. BEACHVILLE, Ont.—With Can. Pac. Ry. (A);
18. BEACONSFIELD, P. Q.—With Can. Pac. Ry. (A);
- 18½. BESTON, Ont.—With Main Line N. & N. W. D. wood Branch.
19. BERTON JCT., Ont.—Junction Main Line N. & N. lingwood Branch.
20. BELLVILLE JCT., Ont.—Junction Main Line and B
21. BERLIN, Ont.—Junction Main Line and Galt Branch
22. BERLIN FALLS, N. H.—With stage for Errol, N. I. Fridays, returning Tuesdays, Thursdays and Saturdays
23. BETHEL, Me.—With stage for Rangeley Lakes.
24. BLACK ROCK, N. Y.—With Mich. Cent.; N. Y. C. Railways.
25. BLACKWATER JCT., Ont.—Junction Main Lines N. & Midland.
26. BRACEBROOK, Ont.—With Muskoka & Nipissing N
27. BRADFORD, Ont.—With stage for Bond Head.
28. BRAMPTON, Ont.—With Can. Pac. Ry. (A);
29. BRANTFORD, Ont.—Junction Brantford & Tilson Branches.
30. BRANTFORD JCT., Ont.—Junction Georgian Bay Tilsonburg Branches;
31. BROCKVILLE, Ont.—With Rich. & Ont. Nav. Co. Morristown.
32. BROOKFIELD, Ont.—With Mich. Cent. Ry. (A);
33. BROSSAU'S, P. Q.—Junction Rouses' Point and Fort
34. BRYANT'S POND, Me.—With stage for Rangeley Lak
35. BUFFALO, N. Y.—With Railways diverging (A);
36. BURK'S FALLS, Ont.—With Muskoka & Nipissing Maganetawan on Mondays, Wednesdays and Pevensey on Tuesdays and Saturdays.
37. BURLINGTON, Ont.—With Main Line N. & N. W.
45. CALEDON EAST, Ont.—With stage for Sleswick and
46. CALEDONIA, Ont.—With stage for Mount Healy and Dover and Buffalo & Goderich Branches.
48. CANFIELD, Ont.—With Mich. Cent. Ry.
49. CANFIELD JCT., Ont.—Junction Loop Line and Bu
50. CARDWELL JCT., Ont.—With Can. Pac. Ry.
51. CARLTON, Ont.—With Can. Pac. Ry. (A).
52. CHATHAM, Ont.—With Erie & Huron Ry. (A).
53. CHAUDIERE JCT., P. Q.—With Intercolonial Ry.
54. CLINTON, Ont.—With London, Huron & Bruce and
- 54½. CLINTON JCT., Ont.—Junction London, Huron & Branches.
55. COBourg, Ont.—With Cobourg, Peterboro & Marin
- 55½. COLDWATER JCT., Ont.—With Medonte Tramwa
56. COLLINGWOOD, Ont.—With Great Northern Tra Collingwood and Meaford Branches.
57. COLWELL, Ont.—Junction Meaford and North Sim
58. COTEAU JCT., P. Q.—With Rich. & Ont. Nav. Co.
59. CUFEMORE, Ont.—With stage for Cashtown, Dur Wednesdays and Fridays.
60. CUMBERLAND, Me.—With Maine Central Ry. (A).
65. DANVILLE Jct., Me.—With Maine Central Ry.
- 65½. DEERING, Me.—With Maine Central Ry. (A).
66. DESERONTO JCT., Ont.—With Bay of Quinte Railw
67. DETROIT, Mich.—With Railways diverging; also Navigation Company and Lake Superior Tra
68. DORVAL, P. Q.—With Canadian Pacific Railway (A)
69. DOUCET'S LANDING, P. Q.—With ferry for Three F
70. DRUMBO, Ont.—With Canadian Pacific Railway (A)
71. DUNTRON, Ont.—With stage for Singhampton, M
76. ELMVALE, Ont.—With stage for Waverley and Tra
77. ELORA, Ont.—With Canadian Pacific Railway (A)
78. EMSDALE, Ont.—With stage for Dufferin Bridge, days, Thursdays and Saturdays.
79. ERIE AND HURON CROSSING, Ont.—With Erie & B
83. FALMOUTH, Me.—With Maine Central Railway (A)

GRAND TRUNK RAILWAY

CONNECTIONS.

With Can. Pac. Ry. (A);
 With Can. Pac. Ry. (A);
 nt.—Junction Welland Division and Albanburg Branch.
 With Main Lines N. & N.W. Division, Meaford and North
 s.
 With stage for Owen Sound.
 th stage for Rosemont.
 th Junction Three Rivers and Quebec Branches.
 With Main Lines Midland Division (A) and N. & N. W. Divi-
 Me. Cent. Ry. (A); and stage for Turners.
 n stage for Kettleby, Lloydtown and Schomberg.
 steamers for Lakes Simcoe and Couchiching and stages for
 —With Can. Atlantic Ry. (A);
 With Can. Pac. Ry. (A);
 —With Can. Pac. Ry. (A);
 With Main Line N. & N. W. Division and Beeton & Colling-
 —Junction Main Line N. & N. W. Division and Beeton & Col-
 nt.—Junction Main Line and Belleville Branch.
 tion Main Line and Galt Branch.
 H.—With stage for Errol, N.H., Mondays, Wednesdays and
 ng Tuesdays, Thursdays and Saturdays.
 stage for Rangeley Lakes.
 —With Mich. Cent.; N. Y. C. & H. R. and N. Y. L. E. & W.
 Ont.—Junction Main Lines Midland Division to Port Hope
 —With Muskoka & Nipissing Nav. Co. and stage for Baysville.
 With stage for Bond Head.
 With Can. Pac. Ry. (A);
 Junction Brantford & Tilsonburg and Buffalo & Goderich
 Ont.—Junction Georgian Bay & Lake Erie and Brantford &
 nches;
 —With Rich. & Ont. Nav. Co.; Can. Pac. Ry.; and ferry for
 —With Mich. Cent. Ry. (A);
 Junction Rouses' Point and Port Covington Branches.
 —With stage for Rangeley Lakes
 th Railways diverging (A);
 —With Muskoka & Nipissing Nav. Co. and with stage for
 on Mondays, Wednesdays and Fridays, and for Chetwynd and
 esdays and Saturdays.
 —With Main Line N. & N. W. Division and Toronto Branch.
 .—With stage for Sleswick and Mono Mills.
 With stage for Mount Healy and Indiana, and Junction Port
 alo & Goderich Branches.
 With Mich. Cent. Ry.
 —Junction Loop Line and Buffalo & Goderich Branch.
 nt.—With Can. Pac. Ry.
 th Can. Pac. Ry. (A).
 th Erie & Huron Ry. (A).
 Q.—With Intercolonial Ry.
 th London, Huron & Bruce and Buffalo & Goderich Branches.
 t.—Junction London, Huron & Bruce and Buffalo & Goderich
 th Cobourg, Peterboro & Marmora Ry.
 Ont.—With Medonte Tramway.
 .—With Great Northern Transit Co.; and with Beeton &
 d Meaford Branches.
 nction Meaford and North Simcoe Branches.
 —With Rich. & Ont. Nav. Co. and Canada Atlantic Ry.
 With stage for Cashtown, Dunedin and Lavender on Mondays,
 d Fridays.
 —With Maine Central Ry. (A).
 —With Maine Cent. Ry.
 With Maine Central Ry. (A).
 nt.—With Bay of Quinte Railway & Navigation Co.
 With Railways diverging; also with Detroit & Cleveland Steam
 mpany and Lake Superior Transit Company.
 th Canadian Pacific Railway (A).
 P. Q.—With ferry for Three Rivers.
 th Canadian Pacific Railway (A).
 With stage for Singhampton, Maxwell and Fiesherston.
 With stage for Waverley and Tramway to Hillsdale.
 Canadian Pacific Railway (A).
 With stage for Dufferin Bridge, Sprucedale and Kearney on Tues-
 ds and Saturdays.
 crossing, Ont.—With Erie & Huron Railway.
 With Main Central Railway (A).

GRAND TRUNK RAILWAY

CONNECTIONS.—Continued.

84. FRENELON FALLS, Ont.—With stage for Bobcaygeon.
 85. FERGUS, Ont.—With Canadian Pacific Railway (A).
 86. FORT ERIE, Ont.—With Michigan Central Railway and Junction of Loop Line and
 Buffalo & Goderich Branches.
 87. FORT GRATIOT, Mich.—With Chicago & Grand Trunk Railway and Grand Trunk
 system in Michigan.
 93. GALT, Ont.—With Canadian Pacific Railway (A); Wellington, Grey & Bruce
 Branch (A) and Galt Branch (A).
 94. GANANOQUE JUNCTION, Ont.—With Thousand Islands Railway.
 94½. GEORGETOWN, Ont.—With Main Line and Main Line N. & N. W. Division (A),
 and stage to Silver Creek and Baillinafad.
 95. GEORGETOWN JUNCTION, Ont.—Junction Main Line and Main Line N. & N. W.
 Division.
 96. GLENCOE, Ont.—Junction Main Line Southern Division and Loop Line.
 97. GODERICH, Ont.—With Northwest Transportation Company.
 98. GORHAM, N.H.—With stages for White Mountains.
 99. GRAVENHURST, Ont.—With Muskoka & Nipissing Navigation Company, Muskoka
 Wharf Branch and stage for Uffington on Tuesdays, Thursdays and Saturdays.
 100. GROVETON JUNCTION, N.H.—With Boston & Maine (B. & L. system) R. R.
 100½. GUELPH, Ont.—With Main Line and Wellington, Grey & Bruce Branch.
 101. GUELPH JUNCTION, Ont.—Junction Main Line and Wellington, Grey & Bruce
 Branch.
 107. HAGERSVILLE, Ont.—With Michigan Central Railway and stage for Selkirk
 108. HAMILTON, Ont.—With Main Line N. & N. W. Division; Main Line Southern
 Division, Port Dover and Toronto Branches, and with stage for Ancaster.
 109. HARRISBURG, Ont.—Junction Main Line Southern Division, Brantford & Tilsonburg
 and Wellington, Grey & Bruce Branches.
 110. HARRISTON, Ont.—With Canadian Pacific Railway (A); and Junction of Georgian
 Bay & Lake Erie and Wellington, Grey & Bruce Branches.
 111. HOWICK, P.Q.—With Canada Atlantic Railway (A).
 112. HUNTINGDON, P.Q.—With stages for Chateauguy Chasm.
 113. HUNTSVILLE, Ont.—With steamer for points on Lakes Vernon, Fairy, Mary and
 Peninsula, and stage for Hoodstown, Grassmere and Dwight on Mondays and
 Thursdays.
 114. HYDE PARK JUNCTION, Ont.—Junction Main Line Southern Division and London,
 Huron & Bruce Branch.
 120. INGERSOLL, Ont.—With Canadian Pacific Railway (A).
 121. INGLEWOOD, Ont.—With Canadian Pacific Railway.
 122. IVANHOE, Ont.—With Canadian Pacific Railway (A).
 128. JACQUES CARTIER, P.Q.—With Canadian Pacific Railway (A); and Jacques Cartier
 Union Railway.
 129. JARVIS, Ont.—With stage for Nanticoke and Cheapside, and Junction Port Dover
 Branch (A) and Loop Line (A).
 135. KINCARDINE, Ont.—With Northwest Transportation Company.
 136. KING, Ont.—With stages for Eversley, Temperanceville, Oak Ridges, Laskey, King
 Creek and Nobleton.
 137. KINGSTON, Ont.—With Kingston & Pembroke Railway (A); and Richelieu &
 Ontario Navigation Company.
 138. KINGSTON JUNCTION, Ont.—Junction Main Line and Kingston Branch.
 139. KINMOUNT, Ont.—With Irondale, Bancroft & Ottawa Railway.
 140. KOMOKI, Ont.—Junction Main Line Southern Division and Sarnia Branch.
 146. LACADIE, P.Q.—With Canadian Pacific Railway (A);
 146½. LACHINE, P.Q.—With Canadian Pacific Railway (A); Ottawa River Navigation
 Company; Beauharnois Navigation Company; and ferry for Caughnawaga.
 147. LACOLLE, P.Q.—With Canada Atlantic Railway (A).
 147½. LAKE JCT., Ont.—Junction Beeton & Collingwood and Meaford Branches.
 148. LAKEFIELD, Ont.—With steamers for Stone Lake.
 148½. LAKEFIELD JCT., Ont.—Junction Belleville and Lakefield Branches.
 149. LEFROY, Ont.—With stage for Belle Ewart, thence ferry for Koch's Point.
 150. LENNOXVILLE, P.Q.—With Boston & Maine (B. & L. system); International; and
 Quebec Central Railways.
 151. LEWISTON, Me.—With Maine Central Railway (A);
 152. LEWISTON JUNCTION, Me.—With stage for Poland Springs and Junction Main Line
 and Lewiston Branch.
 153. LINDSAV, Ont.—With Main Lines Midland Division, Haliburton, Cobocok and
 Whitty Branches, and with Trent Valley Navigation Company.
 154. LISTOWEL, Ont.—Junction Georgian Bay & Lake Erie and Wellington, Grey &
 Bruce (south extension) Branches.
 155. LONDON, Ont.—With Canadian Pacific Railway (A); Michigan Central Railway;
 Main Line Southern Division; London; London, Huron & Bruce; Sarnia and
 Port Stanley Branches.
 156. LONDON EAST, Ont.—Junction Main Line Southern Division and London Branch.
 157. LORNEVILLE JUNCTION, Ont.—Junction Main Lines Midland Division and Cobocok
 Branch.
 158. LUCAN CROSSING, Ont.—Junction Main Line (A) and London, Huron & Bruce
 Branch (A).
 165. MANILLA JUNCTION, Ont.—Junction Main Line Midland Division and Whitty
 Branch.
 166. MEAFORD, Ont.—With stages for Bay View, Woodford, Owen Sound, Colpo's Bay,
 Chatsworth, Latona, Kilsyth, Arkwright and Elsinore.
 167. MEBHANIC FALLS, Me.—With Rumford Falls and Buckfield Railway and stage for
 Webb's Mills.



CONNECTIONS.—Continued.

- 168. MERRITON, Ont.—Junction Main Line Southern Division and Welland Division.
169. MIDLAND, Ont.—With stages for Penetanguishene, and Muskoka & Nipissing Navigation Company.
170. MILLBROOK, Ont.—Junction Main Line Midland Division and Old Road.
171. MILTON, Ont.—With Canadian Pacific Railway (A);
172. MONTREAL, P.Q.—With Canadian Pacific Railway (A); Richelieu & Ontario Navigation Company; Black Diamond Line; Quebec Steamship Company and Ocean Steamships for Europe.
173. MOORE'S JUNCTION, N.Y.—With Delaware & Hudson Canal Company and Central Vermont Railway.
174. MOUNT FOREST, Ont.—With Canadian Pacific Railway (A).
175. MUSKOKA WHARF, Ont.—With Muskoka & Nipissing Navigation Company.
176. MYRTLE, Ont.—With Canadian Pacific Railway (A).
182. NAPANEE, Ont.—With Napance, Tamworth & Quebec Railway.
182 1/2. NEW GLOUCESTER, Me.—With Maine Central Railway.
183. NEWMARKET, Ont.—With stage for Sharon, Queensville, Jersey, Keswick, Bell Haven and Sutton;
184. NIAGARA FALLS, Ont.—With Michigan Central (A), and N. Y. L. E. & W. Rys.
184 1/2. NIPISSING JCT., Ont.—With Canadian Pacific Railway.
185. NORTH BAY, Ont.—With Canadian Pacific Railway.
186. NORTH HASTINGS JUNCTION, Ont.—Junction Belleville and Madoc Branches.
187. NORTH STRATFORD, N.H.—With Upper Coos R.R. and stage for Colebrook.
188. NORTH YARMOUTH, Me.—With stage for East Pownal and Durham.
189. NORWAY, Me.—With stage for Bridgeton, North Waterford and Lovell.
190. NORWICH, Ont.—With Brantford & Tilsonburg (A) and Georgian Bay & Lake Erie Branches (A).
195. OMEMEE JCT., Ont.—Junction Main Line Midland Division and Old Road.
196. ORILLIA, Ont.—With Main Line N. & N. W. Division; Main Line Midland Division; stages for points on Lakes Couchiching and Simcoe.
196 1/2. ORILLIA JCT., Ont.—Junction Main Lines N. & N. W. and Midland Divisions.
197. OXFORD, Me.—With stage for Naples.
201. PALMERSTON, Ont.—Junction Wellington, Grey & Bruce; Georgian Bay & Lake Erie and Durham Branches.
202. PARIS, Ont.—Junction Main Line Southern Division and Buffalo & Goderich Branch.
203. PENETANGUISHENE, Ont.—With Muskoka & Nipissing Navigation Company and stage for Midland.
204. PETERBORO', Ont.—With Canadian Pacific Railway (A); stage for Bobcaygeon; and junction Main Line Midland Division; Lakeside and Belleville Branches.
205. PETROLIA, Ont.—With Michigan Central Railway (A).
205 1/2. PETROLIA JCT., Ont.—Junction Petrolia and Sarnia Branches.
206. POINT EDWARD, Ont.—With ferry for Fort Gratiot, Mich., and junction of Main Line and Sarnia Branch.
207. POINT LEVI, P.Q.—With ferry for Quebec; Intercolonial Railway; Quebec Central Railway (A); Richelieu & Ontario Navigation Company; Quebec Steamship Company, and Ocean Steamships for Europe.
208. PORT COLBORNE, Ont.—Junction Welland Division and Buffalo & Goderich Branch.
209. PORT DALHOUSIE, Ont.—With steamer "Empress of India" for Toronto.
210. PORT DOVER, Ont.—Junction Port Dover (A) and Georgian Bay & Lake Erie Branches (A).
211. PORT DOVER JUNCTION, Ont.—With Michigan Central Railway.
211 1/2. PORT HOPE, Ont.—With steamer Norseman for Charlotte.
212. PORT HOPE JCT., Ont.—Junction Main Line and Main Line Midland Division.
213. PORT HURON, Mich.—With Chicago & Grand Trunk Railway; Port Huron & North Western Railway; Lake Superior Transit Company; Detroit & Cleveland Steam Navigation Company and Grand Trunk system in Michigan.
214. PORTLAND, Me.—With Boston & Maine; Maine Central; Portland and Ogdensburg; and Portland & Rochester Railways, and steamers for Boston, New York, St. John, etc.
215. PORTLAND AND ROCHESTER JUNCTION, Me.—With Portland & Rochester Railway.
216. PRESCOTT, Ont.—With Canadian Pacific Railway (A) and ferry for Ogdensburg.
221. QUEBEC, P.Q.—With ferry for Point Levi; Canadian Pacific Railway (A); Quebec & Lake St. John Railway (A); Richelieu & Ontario Navigation Company; Quebec Steamship Company, and Ocean Steamships for Europe.
222. QUEEN'S WHARF, Ont.—Junction Main Line N. & N. W. Division, and Toronto Branch.
226. RICHMOND, P.Q.—Junction Main Line and Quebec Branch.
227. RICHMOND HILL, Ont.—With stage for Patterson, Richmond Hill Village and Elgin Corners.
228. ROUSES POINT, N.Y.—With Canada Atlantic Railway; Central Vermont Railway; and Delaware & Hudson Canal Company.
235. ST. ANNES, P.Q.—With Canadian Pacific Railway (A).
235 1/2. ST. CATHARINES, Ont.—With Main Line Southern Division (A) and Welland Division (A).
236. ST. CONSTANT, P.Q.—With Canadian Pacific Railway (A).
237. ST. HENRI, P.Q.—Junction Main Line and Lachine Branch.
238. ST. HILAIRE, P.Q.—With stages for Belœil Mountains.
239. ST. HYACINTHE, P.Q.—With Canadian Pacific Railway (A).
240. ST. ISIDORE JUNCTION, P.Q.—Junction Fort Covington and Hemmingford Branches.
241. ST. JOHNS, P.Q.—With Canadian Pacific (A) and Central Vermont Railways.
242. ST. LAMBERT, P.Q.—With Canadian Pacific Railway; Montreal & Sorel Railway; and Junction Main Line and Rouses Point Branch.



CONNECTIONS.—Cont

- 243. ST. MARY'S, Ont.—Junction Main Line and London Branch.
244. ST. ROSALIE JUNCTION, P.Q.—With Canadian Pacific Railway (A).
245. ST. THOMAS, Ont.—With Michigan Central Railway (A) and Junction of Loop Line and Port Stanley.
246. SARNIA, Ont.—With ferry for Port Huron, Mich.; Erie North West Transportation Company.
247. SCARBORO JUNCTION, Ont.—Junction Main Line and Main Line Midland Division.
247 1/2. SEVERN, Ont.—With stage for Hansey's Rapids and Cobourg; Thursdays and Saturdays.
248. SHERRBROOKE, P.Q.—With Boston & Maine (B. & L. S.) International and Quebec Central Railways.
249. SIMCOE, Ont.—Junction Loop Line (A) and Georgian Bay.
250. SOUTHAMPTON, Ont.—With North West Transportation (A).
250 1/2. SOUTHERN DIVISION CROSSING, Ont.—Junction Main Line and Toronto Branch.
251. SOUTH PARIS, Me.—Junction Main Line and Norway Branch.
252. SOUTH PARKDALE, Ont.—With Canadian Pacific Railway (A) and N. & N. W. Division and Toronto Branch.
253. STEVENSVILLE, Ont.—With Michigan Central Railway (A).
254. STEWARTON, Ont.—With stage for Ashgrove.
255. STOTTSVILLE, P.Q.—With stage for Napierville.
256. STOUTSFVILLE, Ont.—Junction Sutton Branch and Main Line.
257. STRATFORD, Ont.—Junction Main Line; Georgian Bay & Goderich and London Branches.
257 1/2. STRATFORD JCT., Ont.—Junction Main Line and Georgian Bay Branch.
258. SUNDRIDGE, Ont.—With stage for Pearceley.
259. SUSPENSION BRIDGE, N.Y.—With N. Y. C. & H. R.; and W. & L. Erie Valley and R. W. & O. Railways.
260. SUTTON, Ont.—With steamers on Lake Simcoe.
261. TAVISTOCK JCT., Ont.—Junction Buffalo & Goderich and Erie Branches.
266. THORNHURV, Ont.—With stage for Clarkeburg and Heathcote.
267. THORNHILL, Ont.—With stage for Thornhill Village.
268. THORNTON, Ont.—With stage daily for Ivy, and on to Killy-Leigh.
269. THREE RIVERS, P.Q.—With Canadian Pacific Railway Co. and ferry for Doucet's Landing.
270. TILSONBURG, Ont.—With Michigan Central Railway (A) and Brantford & Tilsonburg Branch.
271. TILSONBURG JUNCTION, Ont.—Junction Loop Line and Main Line.
272. TORONTO, Ont.—With Richelieu & Ontario Navigation of India; Canadian Pacific Railway and Junction Main Line N. & N. W. Division, and Main Line Midland Division.
273. TOTTEHAM, Ont.—With stage for Tuam, Painesville, and Athlone.
274. TRENTON, Ont.—With Central Ontario Railway.
280. UTTERSON, Ont.—With stage daily for Port Sidney, and Fridays for Doe Lake and intermediate points.
285. VALOIS, P.Q.—With Canadian Pacific Railway (A).
286. VAUDREUIL, P.Q.—With Canadian Pacific Railway (A).
287. VICTORIA, Ont.—With Michigan Central Railway.
287 1/2. VICTORIA JCT., Ont.—Junction Main Line Midland Branch.
288. WELLAND, Ont.—With Michigan Central Railway (A).
289. WELLAND JUNCTION, Ont.—Junction Loop Line and Welland Division.
290. WESTON, Ont.—With Main Line (A), Main Line N. & N. W. Division, and Canadian Pacific Railway (A).
291. WHITEY JUNCTION, Ont.—Junction Main Line and Whitey Junction Branch.
292. WIARTON, Ont.—With Great Northern Transit Company.
293. WINDSOR, Ont.—With Michigan Central Railway (A) and Junction of Loop Line and Port Stanley.
294. WINGHAM, Ont.—With Canadian Pacific Railway (A) (South Extension) and London, Huron & Bruce Branches.
295. WINGHAM JUNCTION, Ont.—Junction Wellington, Grey and London, Huron & Bruce Branches.
296. WOODSTOCK, Ont.—With Canadian Pacific Railway (A) Line Southern Division and Georgian Bay & Lake Erie Branch.
297. WREYFALD, Ont.—With stage for Wreybridge.
298. WYOMING, Ont.—With Sarnia and Petrolia Branches.
299. YARMOUTH, Me.—With Maine Central Railway (A).
300. YARMOUTH JUNCTION, Me.—With Maine Central Railway (A).

NOTE.—Railway connections marked (A) are made from not so designated the connections are made in Union depots.



ACTIONS.—Continued.

on Main Line and London Branch.
 P. Q.—With Canadian Pacific Railway (A).
 Michigan Central Railway (A); Canadian Pacific Rail-
 on of Loop Line and Port Stanley Branch.
 y for Port Huron, Mich.; Erie & Huron Railway; and
 rtation Company.
 —Junction Main Line and Main Line Midland Division.
 age for Hansey's Rapids and Cooper's Falls on Tuesdays,
 days.
 n Boston & Maine (B. & L. system); Canadian Pacific;
 ebec Central Railways.
 Loop Line (A) and Georgian Bay & Lake Erie Branch (A.)
 th North West Transportation Company.
 ossing, Ont.—Junction Main Line N. & N. W. Division
 on Main Line and Norway Branch.
 —With Canadian Pacific Railway (A) and junction Main
 vision and Toronto Branch.
 th Michigan Central Railway (A).
 stage for Ashgrove.
 n stage for Napierville.
 on Sutton Branch and Main Line Midland Division.
 on Main Line; Georgian Bay & Lake Erie; Buffalo &
 n Branches.
 —Junction Main Line and Georgian Bay & Lake Erie
 stage for Pearceley.
 —With N. Y. C. & H. R.; West Shore; N. Y. L. E. &
 and R. W. & O. Railways.
 ners on Lake Simcoe.
 nction Buffalo & Goderich and Georgian Bay & Lake
 stage for Clarksburg and Heathcote.
 stage for Thornhill Village.
 stage daily for Ivy, and on Tuesdays and Fridays for
 ith Canadian Pacific Railway (A); Rich. & Ont. Nav.
 cect's Landing.
 Michigan Central Railway (A); Loop Line (A), and
 rg Branch.
 Ont.—Junction Loop Line and Brantford & Tilsonburg
 chellen & Ontario Navigation Co.; steamer "Empress
 pacific Railway and Junction Main Line, Toronto Branch
 W. Division, and Main Line Midland Division.
 stage for Tuam, Pelmeville, Keenansville, Loretta and
 ntral Ontario Railway.
 age daily for Port Sidney, and on Monday, Wednesdays
 Lake and intermediate points.
 dian Pacific Railway (A).
 Canadian Pacific Railway (A).
 higan Central Railway.
 nction Main Line Midland Division and Haliburton
 Michigan Central Railway (A).
 —Junction Loop Line and Welland Division.
 ain Line (A), Main Line N. & N. W. Division (A) and
 way (A).
 on Main Line and Whitby Branch.
 eat Northern Transit Company.
 higan Central Railway (A) and ferry for Detroit.
 Canadian Pacific Railway (A); Wellington, Grey & Bruce
 d London, Huron & Bruce Branches.
 t.—Junction Wellington, Grey & Bruce (south extension)
 & Bruce Branches.
 Canadian Pacific Railway (A) and Junction of Main
 on and Georgian Bay & Lake Erie Branch.
 age for Wyebridge.
 rna and Petrolia Branches.
 aine Central Railway (A).
 —With Maline Central Railway.

s marked (A) are made from separate stations. When
 s are made in Union depots.



General Offices. Montreal, Canada.

London Office, Dashwood House, 9 New Broad St., London, Eng.

DIRECTORS

SIR HENRY W. TYLER, M.P., President, London, England.
 LORD CLAUD JOHN HAMILTON, M.P.
 ROBERT YOUNG, Esq.
 ROBERT GILLESPIE, Esq.
 WILLIAM UNWIN HEYGATE, Esq.
 JAMES CHARLES, Esq.
 JOHN MARNHAM, Esq.
 MAJOR ALEXANDER GEORGE DICKSON, M.P.
 WM. LETHBRIDGE, Esq.
 WM. FORD, Esq.
 CHAS. J. CAMPBELL, Esq., Toronto, Canada.
 Hon. FRANK SMITH, Toronto, Canada.

OFFICIALS OF THE SYSTEM

JOSEPH HICKSON, General Manager.....	Montreal, P.Q.
L. J. SEARGEANT, Traffic Manager.....	" "
W. WAINWRIGHT, Assistant Manager.....	" "
C. PERCY, Assistant to General Manager.....	" "
ROBERT WRIGHT, Treasurer.....	" "
WM. EDGAR, General Passenger Agent.....	" "
T. TANDY, General Freight Agent.....	" "
H. W. WALKER, Accountant.....	" "
J. FRED WALKER, Traffic Auditor.....	" "
H. K. RITCHIE, Stationery Agent.....	" "
JOHN TAYLOR, General Storekeeper.....	" "

DIVISIONAL OFFICERS

J. STEPHENSON, Superintendent East of Toronto and Northern Division.....	Montreal, P.Q.
CHARLES STIFF, Superintendent Southern Division.....	Hamilton, Ont.
SAMUEL BARKER, Manager, Northern and North Western Division.....	Toronto, Ont.
E. WRAGGE, Local Manager.....	Toronto, Ont.
E. P. HANNAFORD, Chief Engineer.....	Montreal, P.Q.
JOSEPH HOBSON, Chief Engineer.....	Hamilton, Ont.
J. G. MACKLIN, Engineer.....	Peterboro, Ont.
H. WALLIS, Mechanical Superintendent.....	Montreal, P.Q.
C. K. DOMVILLE, Mechanical Superintendent.....	Hamilton, Ont.
JOHN EARLS, District General Freight Agent.....	Toronto, Ont.
A. BURNS, District General Freight Agent.....	Montreal, P.Q.
ARTHUR WHITE, District General Freight Agent.....	Toronto, Ont.
R. QUINN, District General Freight Agent.....	Hamilton, Ont.
J. W. LOUD, General Freight Agent Through Traffic.....	Detroit, Mich.
A. H. HARRIS, Assistant General Freight Agent Through Traffic.....	Buffalo, N.Y.
E. R. BAINES, Storekeeper.....	London, Ont.

AGENCIES

E. P. BRACH, General Agent, 271 Broadway.....	New York, N.Y.
F. A. HOWE, Freight Agent, 103 South Clark Street.....	Chicago, Ill.
W. ROBINSON, Michigan and South-Western Passenger Agent, cor. Jefferson and Woodward Avenues.....	Detroit, Mich.
W. C. TALLMAN, New England Passenger Agt., 280 Washington St.....	Boston, Mass.
N. J. GRACE, Assistant N. E. Passenger Agent.....	" "
G. H. PETERS, Freight Agent, 280 Washington Street.....	Boston, Mass.
G. B. OSWELL, Central Passenger Agent, 62 1/2 Ford Street.....	Ogdensburg, N.Y.
T. D. SHERIDAN, Northern Passenger Agent, 177 Washington St.....	Buffalo, N.Y.
Mrs. L. BARBER, International Block.....	Niagara Falls, N.Y.
D. ISAACS (Prospect House).....	Niagara Falls, N.Y.
G. M. COLBURN (Clifton House).....	Niagara Falls, Ont.
E. DELAHOKE, City Ticket Agent.....	London, Ont.
C. E. MORGAN, City Ticket Agent.....	Hamilton, Ont.
P. J. SLATTER, City Passenger Agent, 20 York street and corner King and Yonge streets.....	Toronto, Ont.
T. HANLEY, City Passenger Agent.....	Kingston, "
W. D. O'BRIEN, City Passenger Agent, 143 St. James street.....	Montreal, P.Q.
J. McCONNIFF, (Windsor Hotel).....	" "
H. St. DIEZIEK, (Balmoral Hotel).....	" "
A. H. TAYLOR, City Pass. and Freight Agent, Russell House Block.....	Ottawa, Ont.
T. D. SHIPMAN, City Pass. Agent, opposite St. Louis Hotel and 17 Sous-Le-Fort street.....	Quebec, P.Q.

GRAND TRUNK RAILWAY GEN. DIV.

LEWISTON BRANCH

Miles.	STATIONS.	Pass.	Pass.	Pass.	Pass.	Pass.	Pass.	Pass.
		A. M.	A. M.	A. M.	A. M.	P. M.	P. M.	P. M.
0	Lewiston Junc 152.....Lv	7.37	8.25	10.00	11.10	1.45	4.45	6.10
3.14	Auburn 9.....	7.35	8.33	9.58	11.18	1.53	4.53	6.18
5.50	Lewiston 151.....Ar	7.37	8.35	9.50	11.20	1.55	4.55	6.20
		A. M.	A. M.	A. M.	P. M.	P. M.	P. M.	P. M.
0	Lewiston 151.....Lv	7.15	9.35	10.50	3.00	4.20	4.30	5.55
3.36	Auburn 9.....	7.17	9.37	10.52	3.02	4.22	4.32	5.57
5.50	Lewiston Junc 152.....Ar	7.27	9.47	11.05	3.12	4.32	4.42	6.07

Trains run daily, except Sunday.

NORWAY BRANCH

Miles.	STATIONS.	Pass.	Pass.	Pass.	Pass.	Pass.	Pass.
		A. M.	A. M.		P. M.	P. M.	P. M.
0	South Paris 251.....Lv	6.30	10.30		3.00	3.40	4.15
1.50	Norway 189.....Ar	6.35	10.35		3.05	3.45	4.20
		A. M.	A. M.		P. M.	P. M.	P. M.
0	Norway 189.....Lv	6.20	10.15		2.45	3.25	4.02
1.50	South Paris 252.....Ar	6.25	10.20		2.50	3.30	4.07

Trains run daily, except Sunday.

THREE RIVERS BRANCH

Mixed	Mixed	Miles.	STATIONS.	Mixed	Mixed
	P. M.			A. M.	
3.30		0	Ar. Arthabaska 7.....Lv	6.30	
3.30	3.71		Walker's Cutting.....	6.45	
	6.46		Black River.....		7.07
9.03	10.71		Bulstrode.....		7.30
	13.84		St. Eulalie.....		7.35
3.33	17.84		Aston.....		8.15
3.00	25.09		St. Celestin.....		8.15
1.37	30.46		St. Gregoire.....		8.30
1.30	34.71		Douce's Landing 69.....		8.45
13.35			Lv. Three Rivers 269.....Ar		A. M.

Trains run daily, except Sunday.

ROUSE'S POINT BRANCH

Miles.	STATIONS.	Mixed	Pass.	Pass.	Pass.	Pass.	Pass.	Pass.
		A. M.	A. M.	A. M.	P. M.	P. M.	P. M.	P. M.
0	Montreal 172.....Lv	5.05	7.20	8.30	4.20	4.30	5.30	6.30
1.50	St. Henri 237.....	5.12			4.25	4.35		
6.32	St. Lambert 242.....	5.25	8.46	9.50	4.40	4.50		5.50
12.00	Brosses 33.....	5.43	8.56	9.00	4.50	5.01		
20.18	Lacadie 146.....	6.15	9.12		5.18			
27.00	St. Johns 241.....Ar	6.40	9.25	9.35	5.20	5.32		6.25
		7.55	9.25		5.32			
33.46	Grand Ligne.....	8.18	9.40		5.45			
39.52	Stottsville 255.....	8.38	9.53		5.57			
43.78	Lacolle 147.....	8.52	10.03		6.05			
50.00	Rouse's Point 228.....Ar	9.15	10.20		6.20			

Miles.	STATIONS.	Pass.	Pass.	Pass.	Pass.	Pass.	Pass.	Mixed
		A. M.	A. M.	A. M.	P. M.	P. M.	P. M.	A. M.
0	Rouse's Point 228.....Lv	6.45			7.40	7.50	8.30	11.30
6.22	Lacolle 147.....	7.00			8.52	9.02		11.54
10.48	Stottsville 255.....	7.09			9.00	9.10		12.11
16.54	Grand Ligne.....	7.21			9.12	9.22		12.33
23.00	St. Johns 241.....Ar	7.35			9.25	9.35		1.00
		7.35	6.45	7.45	9.35	7.45	8.25	1.00
29.82	Lacadie 146.....		7.56	9.47		9.38		1.55
38.00	Brosses 33.....	7.57		10.01		9.54		2.30
43.68	St. Lambert 242.....	8.05	7.19	8.15	10.10	10.05	11.35	2.50
48.50	St. Henri 237.....	8.20			9.25			3.13
50.00	Montreal 172.....Ar	8.25	7.40	8.35	10.30	10.25	11.40	3.20

† Daily except Sunday. ‡ Saturdays only. § Flag Stations.

GRAND TRUNK RAILWAY GEN. DIV.

HEMMINGFORD AND FORT COVINGTON

Mixed.	Pass.	Miles.	STATIONS.
4.35 pm	8.50 am		Ar. Montreal 172.....Lv
4.48 "	8.45 "	1.00	St. Cunegonde.....
4.50 "	8.40 "	1.50	St. Henri 237.....
4.55 "	8.30 "	3.75	Pt. St. Charles.....
5.05 "	8.20 "	6.38	St. Lambert 242.....
5.15 "	8.18 "	12.00	Brosses 33.....
5.25 "	8.12 "	14.30	Laprairie.....
5.35 "	8.01 "	18.02	Lawson's.....
5.45 "	7.57 "	19.88	St. Constant 236.....
5.55 "	7.45 "	23.38	Lv. St. Isidore Junc 240.....
6.05 "	7.45 "	23.38	Ar. St. Isidore Junc 240.....
6.15 "	7.30 "	27.30	St. Isidore.....
6.25 "	7.27 "	27.88	St. Philomene.....
6.35 "	7.17 "	33.66	St. Martine.....
6.45 "	7.05 "	38.86	Howick 111.....
6.55 "	6.55 "	39.80	Can. Atl. Crossing.....
7.05 "	6.55 "	43.66	Brysons.....
7.15 "	6.48 "	47.32	Ormatown.....
7.25 "	6.40 "	52.16	Dewittville.....
7.35 "	6.30 "	56.74	Huntingdon 112.....
7.45 "	6.15 "	64.44	White's.....
7.55 "		69.29	St. Agnes.....
8.05 "	6.00 "	74.20	Lv. Fort Covington.....
8.15 "	5.50 am	74.80	Ar. Fort Covington.....
8.25 "	5.30 "		Lv. Bombay.....
8.35 "	7.35 "	23.38	Ar. St. Isidore Junc 240.....
8.45 "	7.18 "	29.78	St. Remi.....
8.55 "	7.07 "	33.47	St. Michel.....
9.05 "	6.55 "	37.50	Hughes.....
9.15 "		39.67	Can. Atl. Crossing.....
9.25 "	6.47 "	42.18	Barrington 116.....
9.35 "	6.35 am	44.67	Hemmingford.....
9.45 "		47.53	Province Line.....
9.55 "			Lv. Moer's Junc 173.....

Trains run daily, except Sunday.

MONTREAL, ST. LAMBERT & LONGUEUIL

Miles	STATIONS.	Sub.	Sub.
0	Montreal, 172.....Lv	15.05	16.00
1.00	St. Cunegonde.....	5.10	6.00
1.75	St. Henri, 237.....	5.12	6.00
3.75	Point St. Charles.....	5.17	7.00
6.32	St. Lambert, 242.....	5.25	7.00
8.48	Longueuil West.....	5.33	7.00
9.08	Longueuil East.....Ar	5.35	7.00

Miles	STATIONS.	Sub.	Sub.	Pass.
		A. M.	A. M.	
0	Longueuil East.....Lv	6.05	7.25	
60	Longueuil West.....	6.07	7.27	
2.76	St. Lambert, 242.....	6.15	7.35	
5.33	Point St. Charles.....	6.25	7.45	
7.33	St. Henri, 237.....	6.33	7.53	
8.08	St. Cunegonde.....	6.35	7.55	
9.08	Montreal, 172.....Ar	6.40	8.00	

† Daily, except Sunday. ‡ Saturdays only. § Passengers.

MONTREAL & ST. LAURENT-Via Grand Cartier Railway

Pass.	Pass.	Miles	STATIONS.
8.45 am	6.27 pm	0	Ar. Montreal, 172.....
8.40 "	6.22 "	1.00	St. Cunegonde.....
8.38 "	6.20 "	1.50	St. Henri, 237.....
8.37 "	6.18 "	2.00	Lachine Jct.....
8.29 "	6.10 "	7.46	Jacques Cartier, 128.....
8.20 am	6.00 pm	11.84	Lv. St. Laurent.....

Trains run daily except Sunday.

GRAND TRUNK & CANADIAN

FORD AND FORT COVINGTON BRANCHES

Miles	STATIONS.	Mixed.	Pass.
0	Ar. Montreal 172.....Lv.	5 05 am	8 46 pm
1.00	St. Cunegonde.....	5 12 "	8 50 "
1.50	St. Henri 237.....	5 17 "	8 55 "
2.00	St. Lambert 242.....	5 20 "	9 00 "
2.50	Brossaire 33.....	6 00 "	9 45 "
3.00	Laprairie.....	6 12 "	9 57 "
3.50	Lawson's.....	6 45 "	10 30 "
4.00	St. Constant 236.....	6 45 "	10 30 "
4.50	Lv. St. Isidore Junc 240.....Ar.	7 55 "	11 40 "
5.00	Ar. St. Isidore Junc 240.....Lv.	7 55 "	11 40 "
5.50	St. Isidore.....	8 07 "	11 52 "
6.00	St. Philomene.....	8 11 "	11 56 "
6.50	St. Martine.....	8 20 "	12 05 "
7.00	Howick 111.....	8 47 "	12 32 "
7.50	Can. Atl. Crossing.....	9 05 "	12 50 "
8.00	Brysons.....	9 18 "	13 03 "
8.50	Ormstown.....	9 42 "	13 27 "
9.00	Dewittville.....	9 52 "	13 37 "
9.50	Huntingdon 112.....	10 21 "	14 06 "
10.00	White's.....	10 21 "	14 06 "
10.50	St. Agnes.....	11 00 "	14 45 "
11.00	Lv. Fort Covington.....Ar.	5 30 am	8 40 pm
11.50	Ar. Fort Covington.....Lv.	5 20 am	8 30 pm
12.00	Lv. Bombay.....Ar.	5 30 am	7 00 "
12.50	Ar. St. Isidore Junc 240.....Lv.	8 05 "	11 15 "
13.00	St. Remi.....	8 27 "	11 37 "
13.50	St. Michel.....	8 58 "	12 08 "
14.00	Hughes.....	9 20 "	12 30 "
14.50	Can. Atl. Crossing.....	9 36 "	12 46 "
15.00	Barrington 16.....	10 00 "	13 10 "
15.50	Hemmingford.....	10 00 "	13 10 "
16.00	Province Line.....	10 00 "	13 10 "
16.50	Lv. Moor's Junc 173.....Ar.	8 05 "	11 15 "

cept Sunday.

ST. LAMBERT & LONGUEUIL SUBURBAN SERVICE

STATIONS.	Sub.	Sub.	Sub.	Sub.	Sub.	Sub.	Sub.
	A. M.	A. M.	A. M.	P. M.	P. M.	P. M.	P. M.
.....Lv.	7 50	7 45	7 40	12 10	12 05	12 00	7 30
.....	5 10	6 50	9 05	12 15	2 05	6 45	6 30
.....	5 12	6 52	9 07	12 17	2 07	6 47	6 32
.....	5 17	7 00	9 12	12 22	2 12	6 52	6 37
.....	5 25	7 10	9 20	12 30	2 20	6 60	6 45
.....	5 33	7 18	9 30	12 38	2 28	6 68	6 53
.....Ar.	5 35	7 20	9 30	12 50	2 35	6 70	6 55

day. † Saturdays only. Passes will not be accepted on these trains

ST. LAURENT—Via Grand Trunk and Union Jacques Cartier Railways.

Miles	STATIONS.	Pass.	Pass.
0	Ar. Montreal, 172.....Lv.	7 50 am	6 26 pm
1.00	St. Cunegonde.....	7 55 "	6 30 "
1.50	St. Henri, 237.....	7 57 "	6 32 "
2.00	Lachine Jct.....	7 58 "	6 33 "
2.46	Jacques Cartier, 128.....	8 05 "	6 40 "
3.84	Lv. St. Laurent.....Ar.	8 17 am	6 56 pm

cept Sunday.

GRAND TRUNK & CANADIAN

LACHINE SUBURBAN SERVICE.

Mis	STATIONS.	PASSENGER TRAINS.											
		A. M.	A. M.	A. M.	A. M.	N. O.	N. P.	P. M.	P. M.	P. M.	P. M.	P. M.	P. M.
0	Montreal 172..Lv.	5 40	4 40	7 45	9 00	12 00	12 00	3 30	5 05	6 15	9 00
1.00	St. Cunegonde...	5 45	4 45	7 50	9 05	12 05	12 05	3 35	5 10	6 20	9 05
1.50	St. Henri, 237....	5 47	4 47	7 52	9 07	12 07	12 07	3 37	5 12	6 22	9 07
2.25	Cote St. Paul....	5 51	4 51	7 56	9 11	12 11	12 11	3 41	5 16	6 26	9 11
5.81	Rockfield.....	5 57	4 57	8 02	9 17	12 17	12 17	3 47	5 22	6 32	9 17
6.57	Dominion.....	5 59	4 59	8 04	9 19	12 19	12 19	3 49	5 24	6 34	9 19
7.00	Convent.....	6 01	5 01	8 06	9 21	12 21	12 21	3 51	5 26	6 36	9 21
8.00	Lachine } 146 1/2 Ar Wharf }	6 05	5 05	8 10	9 25	12 25	12 25	3 55	5 30	6 40	9 25

Mis	STATIONS.	PASSENGER TRAINS.											
		A. M.	A. M.	A. M.	A. M.	N. O.	N. P.	P. M.	P. M.	P. M.	P. M.	P. M.	P. M.
0	Lachine } Wharf } 146 1/2 Lv	6 05	7 05	8 20	9 25	12 25	12 25	3 55	5 30	6 40	9 25
.99	Convent.....	6 14	7 14	8 29	9 34	12 34	12 34	4 04	5 39	6 49	9 34
1.43	Dominion.....	6 16	7 16	8 31	9 36	12 36	12 36	4 06	5 41	6 51	9 36
2.29	Rockfield.....	6 18	7 18	8 33	9 38	12 38	12 38	4 08	5 43	6 53	9 38
3.75	Cote St. Paul....	6 24	7 24	8 39	9 44	12 44	12 44	4 14	5 49	6 59	9 44
6.50	St. Henri, 237....	6 28	7 28	8 43	9 48	12 48	12 48	4 18	5 53	7 03	9 48
7.00	St. Cunegonde...	6 30	7 30	8 45	9 50	12 50	12 50	4 20	5 55	7 05	9 50
8.00	Montreal, 172 Arr.	6 35	7 35	8 50	9 55	1 00	1 00	6 00	7 10	8 20	

† Saturdays only. Other trains run daily, except Sunday.
Note.—A special train will be run between Montreal and Lachine on Wednesdays and Saturdays, leaving Montreal at 11:15 p.m., and returning from Lachine 11:40 p.m. Commutation, but not Periodical Tickets, will be accepted on these special trains.

MONTREAL & OTTAWA VIA GRAND TRUNK AND CANADA ATLANTIC RAILWAYS.

	Exp.	Exp.	Miles	STATIONS.	Exp.	Exp.
	P. M.	A. M.			P. M.	P. M.
0	8 25	11 30	0	Ar. Montreal.....Lv.	8 50	11 30
1.50	1.50	St. Henri.....	9 57	12 37
3.00	3.00	Lachine Junc.....
7.46	7.46	Jacques Cartier.....
10.18	10.18	Dorval.....
12.58	12.58	Valoisville.....
14.48	14.48	Pointe Claire.....
15.48	15.48	Beaconsfield.....
20.55	20.55	St. Anne.....	9 29	10 07
24.25	24.25	Vaudreuil.....	9 36	10 13
29.00	29.00	Cedars.....
31.06	31.06	St. Dominique.....
34.57	34.57	Riviere Rouge.....
37.48	37.48	Coteau Junc.....	10 00	10 40
42.30	42.30	St. Polycarpe.....	10 15	10 48
54.00	54.00	Glen Robertson.....	10 35	10 55
61.50	61.50	Alexandria.....	10 50	10 55
68.20	68.20	Greenfield.....	11 04	10 40
72.90	72.90	Maxville.....	11 12	10 48
86.90	86.90	Moose Creek.....	11 21	7 00
89.40	89.40	Casselman.....	11 35	7 15
94.40	94.40	South Indian.....	11 50	7 30
99.40	99.40	Beaurook.....	11 59	7 39
105.40	105.40	Eastman's.....	12 10	7 50
116.50	116.50	Lv. Ottawa.....Ar.	12 36	8 10

† Daily, except Sunday. * Flag Stations, trains stop only on signal.

KINGSTON BRANCH

Mis.	STATIONS.	1	3	5	7	9	11	13	15
		A. M.	A. M.	A. M.	A. M.	P. M.	P. M.	P. M.	P. M.
0	Kingston Junc, 138..Lv.	2 30	5 25	7 45	10 20	2 15	4 15	6 15	11 25
2.57	Kingston, 137.....Ar.	2 40	5 35	7 55	10 30	2 25	4 25	6 25	11 35

Mis.	STATIONS.	2	4	6	8	10	12	14
		A. M.	A. M.	A. M.	A. M.	P. M.	P. M.	P. M.
0	Kingston, 137.....Lv.	2 05	5 05	6 10	7 20	1 50	3 50	7 50
2.57	Kingston Junc, 138..Ar.	2 15	5 15	6 20	7 30	2 05	4 05	8 00

Nos. 1 and 2 run daily. Nos. 3 and 4 run daily, excepting Monday. All other trains run daily excepting Sunday.



AN BAY AND LAKE ERIE BRANCH.

Miles.	STATIONS.	Mixed		Pass.		Mixed	
		P. M.	A. M.	A. M.	P. M.	P. M.	A. M.
0.0	Ar. Wiarton 292.....Lv.	7 15	19 20	12 15			
4.73	Clavering.....	5 20	9 35	2 30			
7.84	Hepworth.....	5 34	9 45	3 20			
10.25	Park Head.....	5 40	9 52	3 40			
14.81	Allenford 5.....	5 51	10 10	4 08			
19.86	Tara & Invermay.....	6 05	10 30	4 48			
25.46	Dobbington.....	6 17	10 45	5 06			
32.63	Chesley.....	6 34	11 10	5 46			
37.12	Elmwood.....	6 43	11 25	6 10			
43.42	Hanover.....	6 58	11 47	6 46			
46.73	Carlsruhe.....						
49.72	Neustadt.....	7 13	12 10	7 10			
53.68	Arton.....	7 28	12 25	7 50			
55.88	Alsfeldt.....	7 42	12 35	8 01			
58.49	Drew.....	7 53	12 47	8 13			
63.61	Harriston 110.....Ar.	8 00	1 05	8 40			
69.11	Lv } Palmerston 201 } Ar.	8 00	1 05	9 00			
74.61	Gowanstown.....	4 00	8 28	3 00			
78.11	Listowel, 154.....	4 30	8 38	3 23			
82.75	Britton.....	4 44	8 50	3 39			
86.67	Peppers.....	4 57	9 00	3 43			
89.42	Millbank.....	5 16	9 10	2 32			
91.90	Milverton.....	5 40	9 20	2 50			
94.73	Brunner.....	5 52	9 28	3 58			
99.59	Gad's Hill.....	6 10	9 40	3 09			
105.76	Stratford Junction, 257 1/2	6 35	9 51	3 21			
106.77	Lv } Stratford 257 } Ar.	6 45	10 00	3 30			
113.63	Tavistock Junction, 261.	4 35	9 20				
114.50	Tavistock.....	4 41	9 25				
120.16	Strathallen.....	4 53	9 45				
127.70	C. V. R. Junction.....	5 06	10 10				
129.03	Lv } Woodstock 296 } Ar.	5 10	10 20				
133.73	Currie.....	5 12	11 06				
138.23	Burgessville.....	5 21	11 30				
141.83	Norwich 190.....	5 30	11 55				
142.80	Brantford Junction 30	5 40	12 00				
145.75	Oterville.....	5 45	12 12				
149.41	Hawtreay.....	5 52	12 27				
150.81	Port Dover Junction 211	5 56	12 35				
152.73	Brandy Creek.....	6 01	12 45				
155.73	Gibson.....	6 07	13 05				
161.73	Simcoe 249.....	6 18	1 15				
164.93	Lyons Valley.....	6 27	1 30				
169.23	Lv. Port Dover 210.....Ar.	6 40	1 45				

† Runs Mondays, Wednesdays and Fridays only, between Wiarton and Palmerston.

DON, HURON, & BRUCE BRANCH.

Miles.	STATIONS.	Pass.		Pass.	
		A. M.	P. M.	A. M.	P. M.
0	Ar. London 155.....l.v.	7 45	4 25		
4.17	Hyde Park Junction 114	8 15	4 35		
7.59	Etrick.....	8 23	4 45		
11.24	Iderton.....	8 30	4 55		
15.50	Denfield.....	8 40	5 07		
20.71	Lucan Crossing 158.....	8 47	5 20		
26.46	Clandeboye.....	8 52	5 28		
26.34	Centralia.....	9 05	5 45		
31.14	Exeter.....	9 16	5 57		
35.95	Hensall.....	9 28	6 09		
39.27	Kippen.....	9 34	6 17		
43.27	Brucefield.....	9 42	6 26		
47.00	Clinton Jct.....	9 55	6 40		
49.86	Clinton 54.....	10 00	6 45		
51.00	Clinton Jct.....	10 05	6 50		
56.80	Londesborough.....	10 19	7 03		
60.83	Blyth.....	10 28	7 12		
67.31	Belgrave.....	10 42	7 27		
73.01	Wingham Junction 295	10 57	7 41		
74.33	Wingham 294.....	11 00	7 45		

Sunday.



BUFFALO AND GODERICH BRANCH.

Accm	Exp.	Mixed		Miles	STATIONS	Exp.	Pass.	Mixed	
		P. M.	P. M.					P. M.	P. M.
1 10	8 40			.00	Ar. Exchange St.....				
12 66	8 30			3.73	Ar. Erie St., 35.....				
12 40	8 15			5.75	Ar. Black Rock, 24.....				
12 22	8 01			13.85	Bertie.....				
*12 16	*7 56			17.80	Shirk.....				
*12 03	*7 45			23.66	Port Colborne, 208.....				
*11 50	*7 30			30.26	Wainfleet.....				
*11 36	*7 15			34.35	Lowbanks.....				
11 25	7 02			36.75	Stromness.....				
11 10	6 48			42.50	Dunnville.....				
11 05	6 40			50.02	Canfield Junc., 49.....				
*10 51	*6 25			50.81	Canfield, 48.....				
10 37				55.63	Cook's.....				
10 23	6 16			57.02	York.....				
10 19				63.83	Caledonia, 46.....				
10 29	6 66			72.24	Middleport.....				
10 22				76.70	Onondaga.....				
10 12	5 44			80.16	Cainsville.....				
10 12	5 38	1 15			Lv } Brantford, 29.....				
9 51	5 10	12 65		87.96	Paris, 202.....				
				93.76	Richwood.....				
9 36	4 55	10 00		96.44	Drumbo, 70.....				
9 25	4 41	9 00		102.01	Bright.....				
9 04	4 15	8 25		111.73	Tavistock.....				
8 45	3 50	8 00			Lv } Stratford, 257.....				
8 40	3 35	6 55		119.38	Ar } Stratford, 257.....				
8 28	3 23	6 40		124.41	Sebringville.....				
8 11	3 09	6 15		132.45	Mitchell.....				
8 00	2 55	6 00		137.43	Dublin.....				
7 48	2 43	5 30		143.99	Seaforth.....				
7 30	2 26	4 55		152.11	Clinton, 54.....				
7 27	2 22	4 37			Clinton Jct.....				
*7 19	*2 14	*4 27		155.98	Holmesville.....				
7 00	1 55	4 05		165.03	Goderich, 97.....				

Trains run daily except Sunday.

LONDON BRANCH.

Pass.	Pass.	Mixed	Miles.	STATIONS.	Pass.	Pass.	Mixed
				Ar.			
				Lv.			
				Stratford 257.....	4 25	8 15	10 05
				St. Pauls.....	4 30	8 25	10 15
				St. Mary's 243.....	4 45	8 35	10 25
				St. Mary's Switch.....	4 48	8 38	10 30
				Kel'zy's Siding.....	4 59	8 47	10 42
				Thorndale.....	5 10	8 58	10 54
				Wyton.....	5 16		10 59
				Fairfield.....	5 21		11 04
				London East 156.....	5 30	9 16	11 15
				London 155.....	5 35	9 20	11 20

Trains run daily except Sunday.

TORONTO SUBURBAN SERVICE

Pas	Pas	Pas	Pas	Pas	Pas	Mls	STATIONS.	Pas	Pas	Pas	Pas	Pas	Pas
11 26	6 40	4 15	2 32	10 32	8 30		Ar. York.....	6 30	8 40	12 30	3 05	4 30	7 00
						1.58	Greenwood Avenue	6 35	8 45	12 35	3 10	4 35	7 05
						2.33	Pape's Avenue.....	6 38	8 48				
						2.95	Leslieville.....	6 42	8 52	12 42	3 17	4 42	7 15
						3.64	Don.....	6 45	8 55	12 45	3 22	4 45	7 18
						3.75	Berkeley Street.....	6 48	8 58	12 48	3 25	4 48	7 21
						4.38	Church Street.....	6 51	9 05	12 51	3 30	4 51	7 24
						4.95	Yonge Street.....	6 54	9 08	12 54	3 34	4 54	7 27
						5.43	Toronto, Un'n S 272	6 57	9 11	1 03	3 36	5 05	
						6.58	Queen's Wharf 222	7 04	9 19	1 14	3 45	5 09	
						6.94	Strachan Avenue.....	7 06	9 21	1 16			
						7.74	North Parkdale.....	7 08	9 23	1 19	3 48	5 11	
						9.10	Bloor Street.....			1 21			
						10.53	Carlton.....	7 17		1 28			
						13.84	Lv. Weston 290.....Ar.	7 25					

Trains not otherwise designated run daily, except Sunday.

GRAND TRUNK RY. COGNIDI.

TORONTO SUBURBAN SERVICE.

Pas. Pas.		Pass. Pas.		Miles.	STATIONS.		Pas. Pas.		Pas. Pas.	
P.M.	P.M.	Noon	A.M.		A.M.	A.M.	P.M.	P.M.	P.M.	P.M.
8 25	8 50	12 00	8 20	0	Ar. Toronto, 272Lv.	A.M.	A.M.	P.M.	P.M.
8 20	8 45	11 55	8 15	1.06	Queen's Wharf 222Lv.	7 25	10 40	1 45	4 35
8 15	8 40	11 50	8 10	2.05	South Parkdale 252Lv.	7 30	10 50	1 50	4 45
8 05	8 30	11 45	8 05	3.75	High ParkdaleLv.	7 35	10 55	2 00	4 50
8 00	8 25	11 40	8 00	4.92	WindsmereLv.	7 40	11 00	2 05	4 55
8 55	8 28	11 38	7 58	5.67	The HumberLv.	7 42	11 02	2 07	4 57
8 52	8 25	11 35	7 55	6.45	Humber GroveLv.	7 45	11 05	2 10	4 50
P.M.	P.M.	A.M.	A.M.		Lv. MimicoAr.	A.M.	A.M.	P.M.	P.M.

Trains run daily, except Sunday.

TORONTO BRANCH.

Miles	STATIONS.	Exp.	Exp.	Mixed	Exp.	Exp.	Mail.	Exp.	Mixed
0	Hamilton, 108	A.M.	A.M.	A.M.	P.M.	P.M.	P.M.	P.M.	P.M.
0	N. & N. W. Stn.Lv.	18 50	18 55	12 10	12 10	12 10	6 55	11 20	11 20
4.11	So. Div. Station	16 35	9 05	9 25	12 26	12 16	14 10	6 55	11 20
6.94	Waterdown	6 44	9 05	9 25	12 38	12 28	7 05	7 05	11 20
13.34	Burlington, 37	6 51	9 18	9 25	12 40	2 30	4 21	7 12	10 43
17.58	Oakville	7 03	9 38	9 25	12 52	2 30	7 25	7 25	11 15
22.84	Clarkson's	7 12	9 38	9 25	1 03	2 30	7 36	7 36	11 15
23.24	Lorne Park	7 22	9 38	9 25	1 16	2 30	4 55	4 55	11 15
25.85	Port Credit	7 29	9 38	9 25	1 28	2 30	5 02	5 02	11 17
32.29	Mimico	7 45	9 38	9 25	1 37	2 30	5 22	5 22	11 17
36.09	South Parkdale, 252	8 00	9 38	9 25	1 55	2 30	5 30	5 30	12 30
38.74	Toronto, 272	Ar.	A.M.	A.M.	P.M.	P.M.	P.M.	P.M.	A.M.

Miles	STATIONS.	Pass.	Pass.	Mail.	Exp.	Accm.	Exp.	Accm.	Exp.
0	Toronto, 272	Lv.	A.M.	A.M.	P.M.	P.M.	P.M.	P.M.	P.M.
2 65	South Parkdale, 252Lv.	16 55	18 10	12 20	12 50	14 55	11 15	11 15
6 45	MimicoLv.	7 04	7 15	12 30	13 00	6 04	6 15	11 34
12.89	Port CreditLv.	7 29	7 30	12 47	13 10	6 25	6 25	11 34
15.50	Lorne ParkLv.	7 36	7 37	12 54	13 15	6 31	6 31	11 34
15.91	Clarkson'sLv.	7 36	7 37	1 03	1 10	6 31	6 31	11 34
21.16	OakvilleLv.	7 50	7 51	1 13	1 20	6 44	6 44	11 34
25.40	BronteLv.	7 59	8 00	1 23	1 30	6 57	6 57	11 34
31.80	Burlington, 37Lv.	8 15	8 16	1 33	1 40	7 10	7 10	11 34
34.63	WaterdownLv.	8 22	8 23	1 36	1 43	7 16	7 16	11 34
38.74	So. Div. StationLv.	9 04	9 20	1 45	4 00	6 25	12 45	12 45
	N. & N. W. Stn.Ar.Ar.	8 55	9 10	4 15	4 15	6 45	6 45	12 45
			A.M.	A.M.	P.M.	P.M.	P.M.	P.M.	A.M.

† Daily except Sunday. α Daily, but do not stop at intermediate stations on Sundays.
 † Runs from Burlington via N. & N. W. Div., leaving Burlington 8.22 a.m., arriving at the Beach 8.28, Hamilton N. & N. W. Station 8.55, So. Div. Station 9.04 a.m.

WELLAND DIVISION and ALLANBURG BRANCH.

Acc.	Mail.	Exp.	Miles.	STATIONS.		Acc.	Mail.	Mixed	Exps
A.M.	A.M.	P.M.		Ar.	Lv.	P.M.	P.M.	A.M.	A.M.
8 35	11 45	7 45	0	Port Colborne 208Lv.	5 45	3 45	8 50	6 15
8 31	11 41	7 41	1.06	HumberstoneLv.	5 50	3 50	8 50	6 15
8 19	11 33	7 33	4.44	Welland Junction 289Lv.	5 59	4 01	9 11	6 29
8 13	11 27	7 27	6.16	M. C. R. CrossingLv.	6 04	4 04	9 22	6 26
8 10	11 23	7 24	7.38	Welland 288Lv.	6 09	4 17	9 30	6 41
7 57	11 15	7 15	11.26	Port RobinsonLv.	6 21	4 33	9 52	6 53
7 51	11 11	7 11	12.78	Allanburg Junction 3Lv.	6 26	4 39	9 59	6 59
			18.24	StamfordLv.	6 30	4 43	10 07	7 03
			21.88	CliftonLv.	6 30	4 43	10 07	7 03
7 47	11 07	7 08	13.66	AllanburgLv.	6 30	4 43	10 07	7 03
7 35	10 54	6 59	17.26	ThoroldLv.	6 39	4 58	10 23	7 18
7 27	10 45	6 51	19.03	Merriton 168Lv.	6 51	5 10	10 40	7 27
7 15	10 38	6 40	21.53	St. Catharines 235 1/2Lv.	7 06	5 22	10 58	7 40
7 05	10 30	6 25	24.55	Port Dalhousie 209Lv.	7 10	5 35	11 10	7 55
A.M.	A.M.	P.M.		Lv.	Ar.	P.M.	P.M.	A.M.	A.M.

Trains run daily except Sunday.

GRAND TRUNK RY. COGNIDI.

LOOP LINE.

Accm	Exp.	Accm	Mixed	Miles	STATIONS.		Mixed	Accm	Exp.	Accm
P.M.	P.M.	P.M.	P.M.		Ar.	Lv.	A.M.	P.M.	A.M.	P.M.
1 10	8 40	8 30	0	0	Buffalo, Erie St., 35Lv.	7 40	4 30	7 30	4 45
12 25	8 30	8 20	7	7	Black Rock, 24Lv.	7 45	4 35	7 45	4 50
		6 55	14	14	Stevensville, 253Lv.	8 05	4 55	7 55	5 05
		6 32	14	14	Brookfield, 32Lv.	8 28	5 18	8 05	5 25
		5 20	16 1/2	16 1/2	Welland Junction, 289Lv.	9 05	5 45	8 35	5 55
		4 40	20	20	Feeder SidingLv.	9 25	5 55	8 55	6 15
		4 20	24 1/2	24 1/2	MarshvilleLv.	9 38	6 08	9 05	6 25
		4 13	34 1/2	34 1/2	MoultonLv.	9 55	6 25	9 15	6 35
		3 55	40	40	DiltzLv.	10 01	6 31	9 25	6 45
		3 55	40	40	Darling RoadLv.	10 20	6 50	9 45	6 55
10 15	6 25	8 50	41 1/2	41 1/2	Lv. Canfield Jc., 49	Ar.	10 25	7 05	10 30	7 10
10 00	6 10	3 25	48	48	CayugaLv.	11 10	7 45	10 45	7 25
		51	51	51	DecesvilleLv.	11 40	8 05	10 45	7 25
9 49	6 00	2 55	53 1/2	53 1/2	Nelles' CornersLv.	12 05	7 17	10 58	7 25
9 32	5 40	2 25	61 1/2	61 1/2	Jarvis, 129Lv.	12 45	8 30	11 17	7 25
9 20	5 27	1 50	67 1/2	67 1/2	RentonLv.	1 05	8 45	11 31	7 25
9 10	5 17	1 35	72	72	Simcoe, 249Lv.	1 25	8 54	11 42	7 25
9 00	5 08	1 20	76 1/2	76 1/2	NixonLv.	1 45	9 05	11 53	7 25
8 50	4 58	1 04	83 1/2	83 1/2	DelhiLv.	2 05	9 15	12 03	7 25
8 33	4 40	1 10	88 1/2	88 1/2	CourlandLv.	2 25	9 30	12 12	7 25
8 25	4 31	1 10	92 1/2	92 1/2	TilsonburgLv.	2 45	9 38	12 20	7 25
8 09	4 15	1 35	93 1/2	93 1/2	Tilsonburg Junc., 271Lv.	3 35	9 43	12 25	7 25
7 49	3 57	1 05	107	107	CorinthLv.	4 15	9 52	12 45	7 25
7 38	3 48	9 10	112 1/2	112 1/2	AylmerLv.	5 05	10 11	1 02	7 25
7 25	3 35	8 50	117 1/2	117 1/2	New SarumLv.	6 25	10 21	1 12	7 25
		6 40	122 1/2	122 1/2	Lv. St. Thomas, 245	Ar.	6 50	10 35	1 25	7 25
		6 25	127 1/2	127 1/2	Ar. Paynes	Lv.	7 15	10 45	1 35	7 25
9 45		6 14	126 1/2	126 1/2	BairdsLv.	8 58	11 05	1 45	7 25
9 38		6 02	120 1/2	120 1/2	LawrenceLv.	9 10	11 15	1 55	7 25
9 32		5 55	132 1/2	132 1/2	Thames RiverLv.	9 25	11 25	2 05	7 25
9 28		5 47	134	134	MiddlemissLv.	9 45	11 35	2 15	7 25
9 14		5 30	139 1/2	139 1/2	EkfridLv.	10 05	11 45	2 25	7 25
8 55		5 10	145	145	Glencoe, 96Lv.	10 40	12 00	2 40	7 25
A.M.	A.M.	P.M.	P.M.		Lv.	Ar.	P.M.	P.M.	P.M.	A.M.

Trains run daily except Sunday.

BRANTFORD & TILSONBURG BRANCH.

Miles	STATIONS.		Accm	Mixed	Accm	Accm	Accm
0	Tilsonburg Junction, 271Lv.	A.M.	P.M.	P.M.	P.M.	P.M.
1.88	Tilsonburg, 270Lv.	12 50	8 23	9 55	3 45	3 45
	Tilsonburg (Old Station)Lv.	1 00	8 30	10 05	4 00	4 00
7.56	SpringfordLv.	P.M.	8 43	P.M.	4 10	4 10
12.56	Brantford Junction, 30Lv.	P.M.	8 55	P.M.	4 30	4 30
14.22	Norwich, 190Lv.	P.M.	9 02	P.M.	4 35	4 35
16.29	New DurhamLv.	P.M.	9 05	P.M.	4 40	4 40
18.42	HatchleyLv.	P.M.	9 10	P.M.	4 44	4 44
21.37	HarleyLv.	P.M.	9 17	P.M.	4 52	4 52
25.32	BurfordLv.	P.M.	9 25	P.M.	5 01	5 01
28.00	Mount VernonLv.	P.M.	9 32	P.M.	5 08	5 08
30.32	Mount PleasantLv.	P.M.	9 41	P.M.	5 16	5 16
33.84	West BrantfordLv.	P.M.	9 50	P.M.	5 23	5 23
34.73	Brantford, 29, B. & T.Ar.Ar.	A.M.	9 55	P.M.	5 28	5 28
	Brantford, 29, B. & G.Ar.Ar.	7 15	8 35	9 55	5 35	5 35
42.52	Harrisburg, 109Ar.	7 30	9 30	11 00	4 00	5 27
			A.M.	9 55	11 30	4 25	6 57
			A.M.	A.M.	P.M.	P.M.	P.M.

Trains run daily except Sunday.

GRAND TRUNK RAILWAY

GINNIDI

PETROLIA BRANCH.

Miles	STATIONS.		PASSENGER.					
	Lv.		P. M.	F. M.	P. M.	F. M.	A. M.	A. M.
0.00	Wyoming, 298	Lv.	8 30	7 05	4 16	12 40	9 20	6 50
0.75	Petrolia Jc., 205 1/2		8 35	7 10	4 20	12 45	9 25	6 55
5.50	Petrolia, 205	Ar.	8 56	7 30	4 40	1 10	9 50	7 20
			P. M.	F. M.	P. M.	F. M.	A. M.	A. M.

Miles	STATIONS.		PASSENGER.					
	Lv.		A. M.	A. M.	A. M.	F. M.	F. M.	F. M.
0	Petrolia, 205	Lv.	6 00	8 35	11 40	3 30	6 00	7 45
4.75	Petrolia Jc., 205 1/2		6 20	9 00	12 10	3 55	6 50	8 10
5.50	Wyoming, 298	Ar.	6 25	9 05	12 15	4 00	6 55	8 15
			A. M.	A. M.	P. M.	P. M.	F. M.	F. M.

Trains run daily except Sunday.

PORT STANLEY BRANCH.

Acc	Mail	Acc	Mail	Miles	STATIONS.		Acc	Mail	Acc	Mix	Mail
P. M.	P. M.	A. M.	A. M.		Ar.	Lv.	A. M.	P. M.	P. M.	P. M.	P. A.
8 06	8 55	10 35	0	Port Stanley	Lv.	6 25	1 05	4 35
7 56	8 45	10 25	4.13	White's	Ar.	6 35	1 15	4 45
7 46	8 35	10 15	8.52	Ar { St. Thomas 245	Ar	6 45	1 25	4 55
7 40	8 25	10 05	7 13	Lv {	Lv	6 50	1 35	5 00	10 10	4 45
7 35	8 20	9 50	11.09	Yarmouth	6 54	1 40	5 05
7 27	8 12	9 50	14.16	Glanworth	7 01	1 48	5 13	8 26
7 16	8 03	9 49	18.52	Westminster	7 09	1 56	5 22
7 00	8 50	9 30	6 40	23.74	London 155	7 20	2 10	5 35	6 55	11 15
P. M.	P. M.	A. M.	A. M.		Lv.	Ar.	A. M.	P. M.	P. M.	P. M.	P. M.

Trains run daily, except Sunday.

HALIBURTON BRANCH

Mixed	Miles	STATIONS.		Mixed	
P. M.		Ar.	Lv.	A. M.	
7 00	Ar.	Haliburton	Lv.	6 30
6 52	1.81	Gould's	6 35
6 35	6.31	Dysart	6 50
6 27	8.60	Ingoldsbys	6 56
6 12	12.60	Celert	7 08
6 43	19.31	Myles Railway Junc.	7 31
6 35	21.60	Kinnmount, 139	7 45
6 00	31.35	Rettie's	8 20
6 40	36.50	Fell's	8 35
4 20	41.18	Lv.	Ar. { Fenelon Falls 84	Ar.	9 00
6 50	44.46	Hall's	9 45
6 37	47.86	Cameron	10 00
6 17	53.76	Victoria Junc, 287 1/2	10 18
3 00	54.84	Lv.	Lv. Lindsay, 153	Ar.	10 30
P. M.					A. M.

Trains run daily, except Sunday.

COBOCONK BRANCH.

Mail	Miles	STATIONS.		Mail	
P. M.		Ar.	Lv.	A. M.	
9 55	Ar.	Coboconk	Lv.	6 40
9 35	5.55	Corson's Siding	7 00
9 10	8.52	Victoria Road	7 25
8 40	11.20	Kirkfield	7 45
8 40	12.82	Portage Road	8 55
8 27	16.20	Eldon	8 10
8 10	20.38	Argyle	8 27
8 00	Lv.	Ar. { Lorneville	Ar.	8 40
7 10	22.47	Junc, 157	Lv.	9 00
6 58	26.40	Grass Hill	9 13
6 45	31.78	Cambray	9 28
6 32	36.51	Victoria Junc, 287 1/2	9 45
6 20	37.59	Lv.	Lv. Lindsay, 153	Ar.	9 55
P. M.					A. M.

Trains run daily, except Sunday.

GRAND TRUNK RAILWAY

GINNIDI

BELLEVILLE BRANCH

Mixed	Mixed	Miles	STATIONS.		Mail	Mixed	Mixed
P. M.	P. M.	A. M.	Ar.	Lv.	P. M.	A. M.	A. M.
7 50	8 15	1.98	Ar.	Peterborough, 204	Lv.	1 30	8 20
7 43	8 05	1.98	Lakefield Junc, 148 1/2	1 38	8 28
7 29	7 55	6.30	Drummond's	1 50	8 45
7 21	7 47	9.57	Keene	1 59	8 56
7 12	7 39	13.06	Blezard's	2 06	9 06
7 02	7 31	16.45	Birdsall's	2 17	9 16
6 45	7 17	22.26	Hastings	3 22	9 35
6 10	6 54	32.43	Campbellford	3 00	10 08
6 45	6 36	40.33	Hoard's	3 22	10 32
6 28	6 24	46.22	Stirling	3 29	10 54
6 01	6 13	51.32	North Hastings Jc, 186	3 55	11 11
5 58	6 08	52.83	Holloway	3 59	11 16
5 44	5 59	57.34	Foxboro	4 11	11 30
5 21	61.30	Corbyville	4 21	11 41	8 50
5 12	63.64	Lv. Belleville Junc, 90	Ar.	4 30	12 30	9 00
4 00	65.41	Belleville City	4 30	12 30	19 30
3 58	65.88	Belleville Harbor	4 30	12 30	19 30
P. M.	P. M.	A. M.			P. M.	P. M.	A. M.

Trains run daily, except Sunday. ? These trains run between Belleville Junction and Belleville City on Tuesdays, Thursdays and Saturdays only.

MADOC BRANCH

Mixed	Mixed	Miles	STATIONS.		Mixed	Mixed
P. M.	P. M.		Ar.	Lv.	A. M.	P. M.
8 00	1 47	6.79	Ar.	Eldorado	Lv.	7 30
8 00	1 47	9.60	Madoc	7 42
8 47	2 33	12.70	Moira Lake	8 17
8 38	2 25	14.35	Crookaton	8 50
8 31	2 10	14.35	Ivanhoe, 122	8 50
8 16	1 07	19.71	West Huntingdon	9 48
8 10	1 02	21.60	Lv.	N. Hastings Jc, 186	Ar.	8 13
P. M.	P. M.				P. M.	P. M.

Trains run daily, except Sunday.

LAKEFIELD BRANCH

Mixed	Miles	STATIONS.		Mixed	
P. M.		Ar.	Lv.	P. M.	
8 00	Ar.	Peterboro, 204	Lv.	12 15
7 48	1.98	Lakefield Junc, 148 1/2	12 27
7 43	3.19	Ashburnham	12 31
7 29	3.84	Hazlett's	12 35
7 21	4.77	Auburn Mills	12 39
7 07	7.01	Nasau Mills	12 48
7 00	13.64	Lv.	Lv. Lakefield 148	Ar.	1 00
P. M.					P. M.

Trains run daily except Sunday.

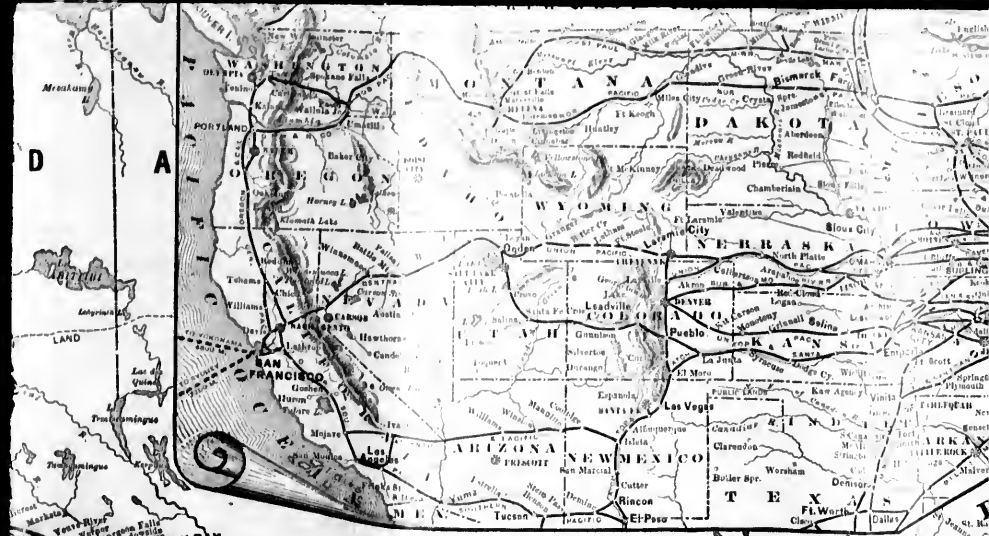
WHITBY BRANCH

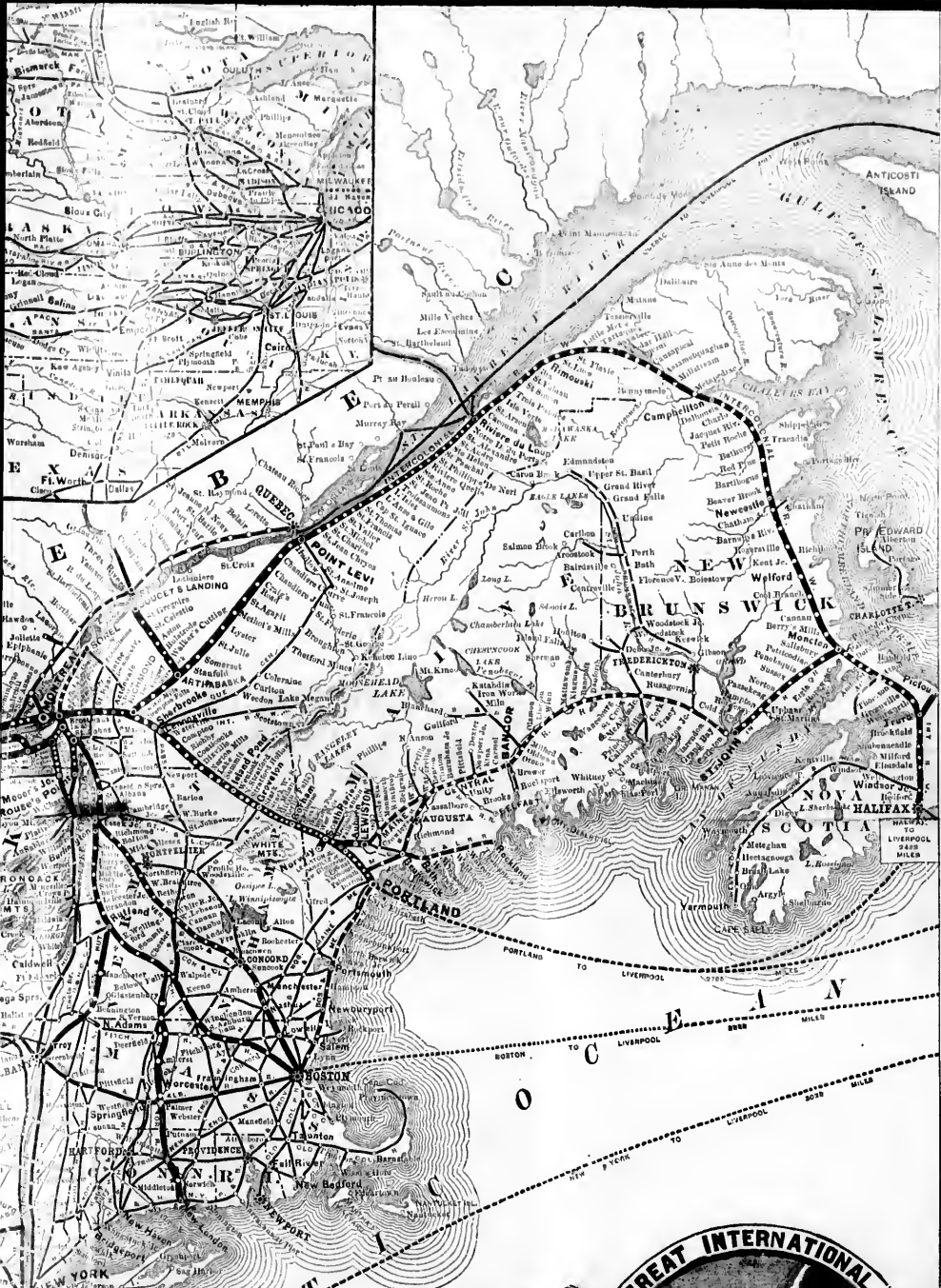
Mixed	Mixed	Mixed	Miles	STATIONS.		Mixed	Mixed	Mixed
P. M.	P. M.	A. M.		Ar.	Lv.	A. M.	P. M.	P. M.
8 00	12 35	8 10	0.89	Ar.	Whitby Harbor	Lv.	7 15	8 55
8 50	12 80	8 05	2.31	Whitby Junction 291	7 25	4 05
8 39	12 15	7 45	7.47	Whitby Town	7 45	7 21
8 27	11 55	7 32	11.32	Brooklin	8 05	4 48
8 20	11 44	7 22	14.32	Myrtle 176	8 17	4 22
8 15	11 36	7 13	16.32	High Point	8 26	4 12
8 10	11 30	7 07	18.32	Manchester	8 35	4 21
8 05	11 25	7 00	19.82	Prince Albert	8 45	4 09
7 45	10 52	27.20	Port Perry	9 08	6 13
7 39	10 47	29.09	Seagrave	9 14	6 10
7 36	10 30	33.63	Lv.	Manilla Junc 165	Ar.	9 30	6 25
P. M.	A. M.	A. M.				A. M.	P. M.	P. M.

Trains run daily, except Sunday.









Map of the

GRAND TRUNK

of **CANADA**

THE GREAT INTERNATIONAL ROUTE.

and Connections

MEAFORD BRANCH.

Mail.		Accm.		Exp.		Miles		STATIONS.		Mail.		Exp.	
P. M.	A. M.	P. M.	A. M.	P. M.	A. M.	P. M.	A. M.	Ar.	Lv.	P. M.	A. M.	P. M.	A. M.
4 45	9 55	6 40	6 26	5 50	5 36	11 20	3 50	6 00	8 55				
4 32	9 42	6 26	6 12	5 50	5 36	11 20	3 50	6 00	8 55				
4 20	9 30	6 18	6 04	5 46	5 32	11 16	3 46	5 56	8 51				
4 10	9 20	6 11	5 57	5 39	5 25	11 09	3 39	5 49	8 44				
4 00	9 10	6 08	5 54	5 36	5 22	11 06	3 36	5 46	8 42				
3 50	9 00	6 05	5 51	5 33	5 19	11 03	3 33	5 43	8 40				
3 40	8 50	6 02	5 48	5 30	5 16	11 00	3 30	5 40	8 38				
3 30	8 40	5 55	5 41	5 27	5 13	10 57	3 27	5 37	8 36				
3 20	8 30	5 52	5 38	5 24	5 10	10 54	3 24	5 34	8 34				
3 10	8 20	5 49	5 35	5 21	5 07	10 51	3 21	5 31	8 32				
3 00	8 10	5 46	5 32	5 18	5 04	10 48	3 18	5 28	8 30				
2 50	8 00	5 43	5 29	5 15	4 59	10 45	3 15	5 25	8 28				
2 40	7 50	5 40	5 26	5 12	4 56	10 42	3 12	5 22	8 26				
2 30	7 40	5 37	5 23	5 09	4 53	10 39	3 09	5 19	8 24				
2 20	7 30	5 34	5 20	5 06	4 50	10 36	3 06	5 16	8 22				
2 10	7 20	5 31	5 17	5 03	4 47	10 33	3 03	5 13	8 20				
2 00	7 10	5 28	5 14	5 00	4 44	10 30	3 00	5 10	8 18				
1 50	7 00	5 25	5 11	4 57	4 41	10 27	2 57	5 07	8 16				
1 40	6 50	5 22	5 08	4 54	4 38	10 24	2 54	5 04	8 14				
1 30	6 40	5 19	5 05	4 51	4 35	10 21	2 51	5 01	8 12				
1 20	6 30	5 16	5 02	4 48	4 32	10 18	2 48	4 58	8 10				
1 10	6 20	5 13	4 59	4 45	4 29	10 15	2 45	4 55	8 08				
1 00	6 10	5 10	4 56	4 42	4 26	10 12	2 42	4 52	8 06				
11 50	6 00	5 07	4 53	4 39	4 23	10 09	2 39	4 49	8 04				
11 40	5 50	5 04	4 50	4 36	4 20	10 06	2 36	4 46	8 02				
11 30	5 40	5 01	4 47	4 33	4 17	10 03	2 33	4 43	8 00				
11 20	5 30	4 58	4 44	4 30	4 14	10 00	2 30	4 40	7 58				
11 10	5 20	4 55	4 41	4 27	4 11	9 57	2 27	4 37	7 56				
11 00	5 10	4 52	4 38	4 24	4 08	9 54	2 24	4 34	7 54				
10 50	5 00	4 49	4 35	4 21	4 05	9 51	2 21	4 31	7 52				
10 40	4 50	4 46	4 32	4 18	4 02	9 48	2 18	4 28	7 50				
10 30	4 40	4 43	4 29	4 15	3 59	9 45	2 15	4 25	7 48				
10 20	4 30	4 40	4 26	4 12	3 56	9 42	2 12	4 22	7 46				
10 10	4 20	4 37	4 23	4 09	3 53	9 39	2 09	4 19	7 44				
10 00	4 10	4 34	4 20	4 06	3 50	9 36	2 06	4 16	7 42				
9 50	4 00	4 31	4 17	4 03	3 47	9 33	2 03	4 13	7 40				
9 40	3 50	4 28	4 14	4 00	3 44	9 30	2 00	4 10	7 38				
9 30	3 40	4 25	4 11	3 57	3 41	9 27	1 57	4 07	7 36				
9 20	3 30	4 22	4 08	3 54	3 38	9 24	1 54	4 04	7 34				
9 10	3 20	4 19	4 05	3 51	3 35	9 21	1 51	4 01	7 32				
9 00	3 10	4 16	4 02	3 48	3 32	9 18	1 48	3 58	7 30				
8 50	3 00	4 13	3 59	3 45	3 29	9 15	1 45	3 55	7 28				
8 40	2 50	4 10	3 56	3 42	3 26	9 12	1 42	3 52	7 26				
8 30	2 40	4 07	3 53	3 39	3 23	9 09	1 39	3 49	7 24				
8 20	2 30	4 04	3 50	3 36	3 20	9 06	1 36	3 46	7 22				
8 10	2 20	4 01	3 47	3 33	3 17	9 03	1 33	3 43	7 20				
8 00	2 10	3 58	3 44	3 30	3 14	9 00	1 30	3 40	7 18				
7 50	2 00	3 55	3 41	3 27	3 11	8 57	1 27	3 37	7 16				
7 40	1 50	3 52	3 38	3 24	3 08	8 54	1 24	3 34	7 14				
7 30	1 40	3 49	3 35	3 21	3 05	8 51	1 21	3 31	7 12				
7 20	1 30	3 46	3 32	3 18	3 02	8 48	1 18	3 28	7 10				
7 10	1 20	3 43	3 29	3 15	2 59	8 45	1 15	3 25	7 08				
7 00	1 10	3 40	3 26	3 12	2 56	8 42	1 12	3 22	7 06				
6 50	1 00	3 37	3 23	3 09	2 53	8 39	1 09	3 19	7 04				
6 40	9 50	3 34	3 20	3 06	2 50	8 36	1 06	3 16	7 02				
6 30	9 40	3 31	3 17	3 03	2 47	8 33	1 03	3 13	7 00				
6 20	9 30	3 28	3 14	2 59	2 44	8 30	1 00	3 10	6 58				
6 10	9 20	3 25	3 11	2 56	2 41	8 27	9 57	3 07	6 56				
6 00	9 10	3 22	3 08	2 53	2 38	8 24	9 54	3 04	6 54				
5 50	9 00	3 19	3 05	2 50	2 35	8 21	9 51	3 01	6 52				
5 40	8 50	3 16	3 02	2 47	2 32	8 18	9 48	2 58	6 50				
5 30	8 40	3 13	2 59	2 44	2 29	8 15	9 45	2 55	6 48				
5 20	8 30	3 10	2 56	2 41	2 26	8 12	9 42	2 52	6 46				
5 10	8 20	3 07	2 53	2 38	2 23	8 09	9 39	2 49	6 44				
5 00	8 10	3 04	2 50	2 35	2 20	8 06	9 36	2 46	6 42				
4 50	8 00	3 01	2 47	2 32	2 17	8 03	9 33	2 43	6 40				
4 40	7 50	2 58	2 44	2 29	2 14	8 00	9 30	2 40	6 38				
4 30	7 40	2 55	2 41	2 26	2 11	7 57	9 27	2 37	6 36				
4 20	7 30	2 52	2 38	2 23	2 08	7 54	9 24	2 34	6 34				
4 10	7 20	2 49	2 35	2 20	2 05	7 51	9 21	2 31	6 32				
4 00	7 10	2 46	2 32	2 17	2 02	7 48	9 18	2 28	6 30				
3 50	7 00	2 43	2 29	2 14	1 59	7 45	9 15	2 25	6 28				
3 40	6 50	2 40	2 26	2 11	1 56	7 42	9 12	2 22	6 26				
3 30	6 40	2 37	2 23	2 08	1 53	7 39	9 09	2 19	6 24				
3 20	6 30	2 34	2 20	2 05	1 50	7 36	9 06	2 16	6 22				
3 10	6 20	2 31	2 17	2 02	1 47	7 33	9 03	2 13	6 20				
3 00	6 10	2 28	2 14	1 59	1 44	7 30	9 00	2 10	6 18				
2 50	6 00	2 25	2 11	1 56	1 41	7 27	8 57	2 07	6 16				
2 40	5 50	2 22	2 08	1 53	1 38	7 24	8 54	2 04	6 14				
2 30	5 40	2 19	2 05	1 50	1 35	7 21	8 51	2 01	6 12				
2 20	5 30	2 16	2 02	1 47	1 32	7 18	8 48	1 58	6 10				
2 10	5 20	2 13	1 59	1 44	1 29	7 15	8 45	1 55	6 08				
2 00	5 10	2 10	1 56	1 41	1 26	7 12	8 42	1 52	6 06				
1 50	5 00	2 07	1 53	1 38	1 23	7 09	8 39	1 49	6 04				
1 40	4 50	2 04	1 50	1 35	1 20	7 06	8 36	1 46	6 02				
1 30	4 40	2 01	1 47	1 32	1 17	7 03	8 33	1 43	6 00				
1 20	4 30	1 58	1 44	1 29	1 14	7 00	8 30	1 40	5 58				
1 10	4 20	1 55	1 41	1 26	1 11	6 57	8 27	1 37	5 56				
1 00	4 10	1 52	1 38	1 23	1 08	6 54	8 24	1 34	5 54				
11 50	4 00	1 49	1 35	1 20	1 05	6 51	8 21	1 31	5 52				
11 40	3 50	1 46	1 32	1 17	1 02	6 48	8 18	1 28	5 50				
11 30	3 40	1 43	1 29	1 14	0 59	6 45	8 15	1 25	5 48				
11 20	3 30	1 40	1 26	1 11	0 56	6 42	8 12	1 22	5 46				
11 10	3 20	1 37	1 23	1 08	0 53	6 39	8 09	1 19	5 44				
11 00	3 10	1 34	1 20	1 05	0 50	6 36	8 06	1 16	5 42				

SOUTHERN DIVISION.

MAIN LINE.

WESTBOUND.

EASTBOUND.

Dist. from S. & P. B. G.	WESTBOUND.					EASTBOUND.											
	MAIN LINE.	Chicago Express.	Accom.	St. Louis Express.	Pacific Express.	Mail.	W.G.&B. Accom.	Mixed.	MAIN LINE.	Limited Express.	Mail.	Atlantic Express.	Mixed.	Day Express.	St. Louis Express.	Mixed.	Mixed.
	Buffalo Erie Depot...Lv	10 40 pm		10 45 am	12 noon	2 00 pm		10 15 am	Detroit, 67...Lv	12 00 n		6 25 am	12 noon	7 00 am	12 05 pm	4 50 pm	
	... N.Y.C. Depot. Lv	11 50 pm		10 42 "	12 10 pm	2 20 pm		10 15 "	Windsor 293...Lv	1 40 am		8 00 "	12 23 pm	7 14 "	1 40 "	6 40 "	
1.00	Suspension Bridge 259 Lv	12 50 am	6 50 am	12 45 "	1 25 "	2 35 "		10 15 "	Tumcsh...Lv								
1.37	Niagara Falls 184	1 15 "	7 05 "	12 45 "	1 25 "	2 45 "		10 15 "	Puce...Lv								
1.72	Merrittton 168	1 31 "	7 27 "	1 05 "	1 25 "	3 05 "		10 15 "	Belle River...Lv								
11.79	St. Catharines 235 1/2	1 35 "	7 33 "	8 25 "	3 05 "	3 15 "		10 15 "	St. Clair...Lv								
17.42	Jordan	7 45 "	7 45 "	8 25 "	3 05 "	3 25 "		10 15 "	Stoney Point...Lv								
23.22	Beamsville	7 58 "	7 58 "			3 30 "		10 15 "	Jeanette's Creek...Lv								
25.75	Grimsby Park		8 10 "			3 50 "		10 15 "	Prairie Siding...Lv								
27.39	Grimsby		8 21 "			4 00 "		10 15 "	Chatham 52...Ar	2 45 "	9 05 "	3 15 "	8 25 "	2 40 "	8 15 "		
32.23	Winona		8 21 "			4 10 "		10 15 "	Erie & Huron Cross 67 79	2 50 "	9 10 "	3 30 "	8 30 "	2 50 "	8 50 "		
37.26	Stoney Creek		8 45 "	9 20 "	4 00 "	4 25 "		10 15 "	Vosburg...Lv		9 13 "	3 17 "	8 33 "				
43.89	Hamilton 108...Ar	2 30 "	8 45 "	9 25 "	4 10 "	4 50 "		10 15 "	Lewisville...Lv			3 25 "	8 50 "				
50.18	Dundas	2 35 "	9 29 "			5 05 "		10 15 "	Thamesville...Lv			3 35 "	9 03 "		9 27 "		
55.10	Copetown		9 40 "			5 25 "		10 15 "	Bothwell...Lv			4 00 "	9 20 "		9 46 "		
59.49	Lynden		9 48 "			5 45 "		10 15 "	Newbury...Lv			4 13 "	9 30 "		10 00 "		
62.73	Harrisburg 109...Ar	3 15 "	10 55 "	10 05 "	4 55 "	6 00 "		10 15 "	Glencoe 96...Lv								
64.62	St. George	3 30 "	10 20 "	10 21 "	6 20 "	6 25 "		10 15 "	Appin...Lv			4 28 "	9 35 "		10 15 "		
72.50	Paris 102	3 39 "	10 40 "	10 21 "	6 20 "	6 57 "		10 15 "	Longwood...Lv			4 52 "	10 05 "		9 46 "		
79.55	Princeton		10 57 "			7 15 "		10 15 "	Mount Brydges...Lv			5 07 "	10 18 "		11 05 "		
81.76	Gobles		11 05 "			7 35 "		10 15 "	Komoka 140...Lv			5 20 "	10 28 "				
84.46	Governor's Road		11 14 "	10 52 "	6 50 "	8 00 "		10 15 "	Hyde Park Junc 114...Lv								
86.50	Eastwood		11 27 "	10 55 "	6 50 "	8 10 "		10 15 "	London 155...Ar	4 30 "	11 05 "	5 45 "	10 50 "	4 55 "	11 30 "		
91.23	Woodstock 296	4 18 "	11 36 "	11 05 "	6 15 "	8 50 "		10 15 "	SARNIA BRANCH. Limited Atlantic Accom. Accom. Mixed. Mixed.								
95.15	Beachville 17		11 45 "	11 05 "	6 15 "	9 02 "		10 15 "	Point Edward 205...Lv	3 05 am		6 15 pm	11 50 am				
100.63	Ingersoll 120	4 34 "	12 05 pm			9 23 "		10 15 "	Sarnia 246...Lv	3 15 "	9 50 "	6 30 "	12 00 pm		5 40 "		
110.14	Dorchester		12 05 pm			9 40 "		10 15 "	Maudamin...Lv			6 50 "	12 20 "		6 12 "		
118.51	London East 156		12 20 "	11 40 "	6 50 "	9 45 "		10 15 "	Petrolia 205...Ar			8 35 "	6 30 "	11 40 am	6 00 "	11 40 am	
119.79	London 155...Ar	5 10 "	12 30 "	11 40 "	6 50 "	9 45 "		10 15 "	Wyoming 298...Lv			10 14 "	7 05 "	11 40 am	6 20 "	11 40 am	
Miles. MAIN LINE. Chicago. Accom. Accom. St. Louis. Pacific. Accom. Mixed.																	
119.79	London 155...Lv	5 30 am	7 35 am	2 30 pm		7 00 "		10 15 "	Wanstead...Lv			10 14 "	7 13 "	12 42 "	6 38 "	1 00 pm	
123.96	Hyde Park Junc 114		7 44 "	2 50 "		7 17 "		10 15 "	Watford...Lv			10 14 "	7 13 "	1 00 "	6 54 "	1 25 "	
129.87	Komoka 140		8 20 "	3 10 "		7 35 "		10 15 "	Keeweenaw...Lv			10 14 "	7 13 "	1 17 "	7 23 "	8 05 "	
139.88	Strathroy		8 31 "	3 23 "		8 00 "		10 15 "	Strathroy...Lv			10 14 "	7 13 "	1 41 "	7 50 "	8 25 "	
146.10	Keeweenaw		8 47 "	3 40 "		8 00 "		10 15 "	Komoka 140...Lv			10 51 "	8 00 "	1 51 "	8 20 "	8 45 "	
153.11	Watford		9 05 "	3 57 "		8 23 "		10 15 "	Hyde Park Junc 114...Lv			11 25 "	8 32 "	2 15 "	9 10 "	9 45 "	
161.41	Wanstead		9 12 "	4 05 "		8 32 "		10 15 "	London 155...Ar	4 40 "		11 25 "	8 45 "		9 25 "	9 45 "	
165.13	Wyoming 298	6 38 "	9 05 "	4 20 "		8 55 "		10 15 "	MAIN LINE. Limited. Mail. Atlantic. B. & T. W.G.&B. Accom. Day Ex. St. Louis. Mixed. Mixed.								
170.31	Petrolia 205...Ar	6 00 "	8 35 "	4 45 "		9 15 "		10 15 "	London 155...Lv	4 45 am	6 00 am	11 30 am		2 20 pm	4 30 "	4 45 pm	
170.96	Maudamin	7 20 "	9 50 "	4 45 "		9 25 "		10 15 "	London East 156...Lv		6 06 "			2 25 "			
180.60	Sarnia 246	7 05 "	9 45 "	4 40 "		9 60 "		10 15 "	Dorchester...Lv		6 41 "	12 05 pm		2 42 "	5 02 "	7 30 "	
183.63	Point Edward 206...Ar	7 15 "	10 05 "	4 50 "		9 00 "		10 15 "	Benchmark 17...Lv		6 49 "	12 05 pm		3 05 "	5 02 "	8 03 "	
Miles. MAIN LINE. Chicago. Accom. Accom. St. Louis. Pacific. Accom. Mixed.																	
119.79	London 155...Lv	5 30 am	6 45 am	2 15 pm	11 45 am	7 10 pm		10 15 "	Woodstock 296...Lv		7 03 "	12 22 "		3 20 "	5 20 "	8 18 "	
123.96	Hyde Park Junc 114		7 00 "	2 35 "		7 30 "		10 15 "	Eastwood...Lv		7 12 "			3 38 "		8 48 "	
129.78	Komoka 140		7 20 "	2 55 "		7 49 "		10 15 "	Governor's Road...Lv					3 50 "			
134.52	Mount Brydges		7 40 "	3 14 "		8 10 "		10 15 "	Gobles...Lv					3 55 "			
149.50	Longwood		8 08 "	3 31 "		8 38 "		10 15 "	Princeton...Lv			12 53 "		4 11 "	5 50 "	8 45 pm	
145.49	Appin		8 21 "	3 09 "		8 52 "		10 15 "	St. George...Lv					4 27 "			
150.18	Glencoe 96	6 20 "	9 00 "	3 17 "		8 45 "		10 15 "	Harrisburg 109...Ar		8 04 "	1 10 "		4 31 "	6 02 "		
153.03	Pratt's		9 30 "	3 30 "		9 02 "		10 15 "	Lynden...Lv		8 09 "	1 13 "	6 35 pm	11 40 am	4 35 "	6 07 "	
156.36	Newbury	6 32 "	9 30 "	3 30 "		9 02 "		10 15 "	Copetown...Lv		8 17 "		6 07 "	11 47 "	4 43 "		
161.60	Bothwell	6 47 "	10 25 "	3 43 "		9 17 "		10 15 "	Dundas...Lv		8 28 "		6 08 "	11 56 "	4 54 "		
169.06	Thamesville	6 54 "	11 05 "	4 01 "		9 38 "		10 15 "	Hamilton 103...Lv		8 41 "	2 25 "	7 23 "	12 07 pm	5 06 "		
178.75	Vosburg		11 26 "	4 15 "		9 58 "		10 15 "	Stoney Creek...Lv		9 25 "	2 00 "	7 45 "	12 20 "	5 20 "		
183.28	Erie & Huron Cross 67 79	7 17 "	11 55 "	4 37 "		10 15 "		10 15 "	Winona...Lv		9 52 "				5 30 "	6 40 "	
184.13	Chatham 52...Ar	7 35 "	12 00 n	4 40 "	1 20 pm	8 50 "		10 15 "	Grimsby...Lv		10 04 "			6 00 "	6 40 "	12 25 pm	
192.17	Prairie Siding		1 40 pm	4 45 "	1 30 "	8 55 "		10 15 "	Grimsby Park...Lv					6 11 "	7 18 "	8 00 pm	
197.06	Jeanette's Creek		2 28 "	5 25 "		9 17 "		10 15 "	Beamsville...Lv		10 15 "			6 22 "	7 30 "	8 10 "	
203.71	Stoney Point		2 58 "	5 55 "		9 47 "		10 15 "	Jordan...Lv		10 26 "			6 33 "	8 38 "	9 18 "	
207.19	St. Clair		3 26 "	6 33 "		10 15 "		10 15 "	St. Catharines 235 1/2...Lv	7 56 "	10 46 "	2 51 "		6 46 "	7 34 "	8 40 "	
212.50	Belle River		3 44 "	6 44 "		10 15 "		10 15 "	Merrittton 168...Lv		10 46 "			6 51 "	8 18 "		
216.84	Puce		4 07 "	7 00 "		10 15 "		10 15 "	Niagara Falls 184...Lv	8 20 "	11 10 "	3 17 "		7 10 "	7 56 "	2 18 "	
221.81	Tumcsh		4 27 "	7 20 "		10 15 "		10 15 "	Suspension Bridge 259 Ar	8 40 "	11 20 "	3 25 "		7 20 "	8 06 "	2 40 "	
229.72	Windsor 293	8 45 "	3 47 "	8 15 "	2 30 "	10 05 "		10 15 "	Buffalo N.Y.C. Depot. Ar	9 45 "	12 05 pm	6 40 "		8 00 "	8 00 "	2 40 "	
	Detroit, 67...Ar	8 20 "	4 50 "	8 05 "	9 40 "			10 15 "	Erie Depot...Ar	9 35 "	12 30 "	8 40 "		8 30 "	8 30 "	2 40 "	

† Daily, except Sundays.

α Daily.

NOTE.—The Chicago, Pacific, Limited and Atlantic Expresses do not stop at intermediate stations on the Sarnia Branch on Sundays.

CONDENSED TIME TABLE BETWEEN BOSTON, NEW YORK & MONTREAL

Via Central Vermont Route

READ UP.			STATIONS.			VIA.			READ DOWN.		
A.M.	A.M.	P.M.				P.M.	P.M.	A.M.	P.M.	A.M.	P.M.
8 30	7 30	7 30	Arr.	Boston	B. & M. R.R.	7 00	7 30	10 30	11 00		
8 35	7 35	7 35	Arr.	Lowell	(Lowell system)	7 05	7 35	10 35	11 05		
8 40	7 40	7 40	Arr.	Manchester	Con. R.R.	7 10	7 40	10 40	11 10		
8 45	7 45	7 45	Arr.	Concord	Nor. R.R.	7 15	7 45	10 45	11 15		
8 50	7 50	7 50	Arr.	White River Junction	Nor. R.R.	7 20	7 50	10 50	11 20		
9 00	8 00	8 00	Arr.	Lowell	Fitch R.R.	7 25	8 00	11 00	11 30		
9 05	8 05	8 05	Arr.	Hennepin	Fitch R.R.	7 30	8 05	11 05	11 35		
9 10	8 10	8 10	Arr.	Keene	Fitch R.R.	7 35	8 10	11 10	11 40		
9 15	8 15	8 15	Arr.	Bellow's Falls	Fitch R.R.	7 40	8 15	11 15	11 45		
9 20	8 20	8 20	Arr.	New York	Norwich S.S. Line	7 45	8 20	11 20	11 50		
9 25	8 25	8 25	Arr.	New London	N. L. N. R.R.	7 50	8 25	11 25	11 55		
9 30	8 30	8 30	Arr.	Brattleboro	Can. Vt. Ry.	7 55	8 30	11 30	12 00		
9 35	8 35	8 35	Arr.	Bellow's Falls	Can. Vt. Ry.	8 00	8 35	11 35	12 05		
9 40	8 40	8 40	Arr.	New York	N.Y., N.H. & H. Ry.	8 05	8 40	11 40	12 10		
9 45	8 45	8 45	Arr.	Springfield	N.Y., N.H. & H. Ry.	8 10	8 45	11 45	12 15		
9 50	8 50	8 50	Arr.	Brattleboro	Can. Vt. Ry.	8 15	8 50	11 50	12 20		
9 55	8 55	8 55	Arr.	Bellow's Falls	Can. Vt. Ry.	8 20	8 55	11 55	12 25		
10 00	9 00	9 00	Arr.	New York (Ct. Depot)	N.Y.C. & H. R.R.	8 25	9 00	12 00	12 30		
10 05	9 05	9 05	Arr.	Albany	N.Y.C. & H. R.R.	8 30	9 05	12 05	12 35		
10 10	9 10	9 10	Arr.	Troy	Fitch R.R.	8 35	9 10	12 10	12 40		
10 15	9 15	9 15	Arr.	Burlington	B. & R. Ry.	8 40	9 15	12 15	12 45		
10 20	9 20	9 20	Arr.	Essex Junction	Can. Vt. Ry.	8 45	9 20	12 20	12 50		
10 25	9 25	9 25	Arr.	Bellow's Falls	Can. Vt. Ry.	8 50	9 25	12 25	12 55		
10 30	9 30	9 30	Arr.	Windsor	Can. Vt. Ry.	8 55	9 30	12 30	13 00		
10 35	9 35	9 35	Arr.	White River Junction	Can. Vt. Ry.	9 00	9 35	12 35	13 05		
10 40	9 40	9 40	Arr.	Montpelier	Can. Vt. Ry.	9 05	9 40	12 40	13 10		
10 45	9 45	9 45	Arr.	Burlington	Can. Vt. Ry.	9 10	9 45	12 45	13 15		
10 50	9 50	9 50	Arr.	Essex Junction	Can. Vt. Ry.	9 15	9 50	12 50	13 20		
10 55	9 55	9 55	Arr.	Bellow's Falls	Can. Vt. Ry.	9 20	9 55	12 55	13 25		
11 00	10 00	10 00	Arr.	Windsor	Can. Vt. Ry.	9 25	10 00	13 00	13 30		
11 05	10 05	10 05	Arr.	White River Junction	Can. Vt. Ry.	9 30	10 05	13 05	13 35		
11 10	10 10	10 10	Arr.	Montpelier	Can. Vt. Ry.	9 35	10 10	13 10	13 40		
11 15	10 15	10 15	Arr.	Burlington	Can. Vt. Ry.	9 40	10 15	13 15	13 45		
11 20	10 20	10 20	Arr.	Essex Junction	Can. Vt. Ry.	9 45	10 20	13 20	13 50		
11 25	10 25	10 25	Arr.	Bellow's Falls	Can. Vt. Ry.	9 50	10 25	13 25	13 55		
11 30	10 30	10 30	Arr.	Windsor	Can. Vt. Ry.	9 55	10 30	13 30	14 00		
11 35	10 35	10 35	Arr.	White River Junction	Can. Vt. Ry.	10 00	10 35	13 35	14 05		
11 40	10 40	10 40	Arr.	Montpelier	Can. Vt. Ry.	10 05	10 40	13 40	14 10		
11 45	10 45	10 45	Arr.	Burlington	Can. Vt. Ry.	10 10	10 45	13 45	14 15		
11 50	10 50	10 50	Arr.	Essex Junction	Can. Vt. Ry.	10 15	10 50	13 50	14 20		
11 55	10 55	10 55	Arr.	Bellow's Falls	Can. Vt. Ry.	10 20	10 55	13 55	14 25		
12 00	11 00	11 00	Arr.	Windsor	Can. Vt. Ry.	10 25	11 00	14 00	14 30		
12 05	11 05	11 05	Arr.	White River Junction	Can. Vt. Ry.	10 30	11 05	14 05	14 35		
12 10	11 10	11 10	Arr.	Montpelier	Can. Vt. Ry.	10 35	11 10	14 10	14 40		
12 15	11 15	11 15	Arr.	Burlington	Can. Vt. Ry.	10 40	11 15	14 15	14 45		
12 20	11 20	11 20	Arr.	Essex Junction	Can. Vt. Ry.	10 45	11 20	14 20	14 50		
12 25	11 25	11 25	Arr.	Bellow's Falls	Can. Vt. Ry.	10 50	11 25	14 25	14 55		
12 30	11 30	11 30	Arr.	Windsor	Can. Vt. Ry.	10 55	11 30	14 30	15 00		
12 35	11 35	11 35	Arr.	White River Junction	Can. Vt. Ry.	11 00	11 35	14 35	15 05		
12 40	11 40	11 40	Arr.	Montpelier	Can. Vt. Ry.	11 05	11 40	14 40	15 10		
12 45	11 45	11 45	Arr.	Burlington	Can. Vt. Ry.	11 10	11 45	14 45	15 15		
12 50	11 50	11 50	Arr.	Essex Junction	Can. Vt. Ry.	11 15	11 50	14 50	15 20		
12 55	11 55	11 55	Arr.	Bellow's Falls	Can. Vt. Ry.	11 20	11 55	14 55	15 25		
13 00	12 00	12 00	Arr.	Windsor	Can. Vt. Ry.	11 25	12 00	15 00	15 30		
13 05	12 05	12 05	Arr.	White River Junction	Can. Vt. Ry.	11 30	12 05	15 05	15 35		
13 10	12 10	12 10	Arr.	Montpelier	Can. Vt. Ry.	11 35	12 10	15 10	15 40		
13 15	12 15	12 15	Arr.	Burlington	Can. Vt. Ry.	11 40	12 15	15 15	15 45		
13 20	12 20	12 20	Arr.	Essex Junction	Can. Vt. Ry.	11 45	12 20	15 20	15 50		
13 25	12 25	12 25	Arr.	Bellow's Falls	Can. Vt. Ry.	11 50	12 25	15 25	15 55		
13 30	12 30	12 30	Arr.	Windsor	Can. Vt. Ry.	11 55	12 30	15 30	16 00		
13 35	12 35	12 35	Arr.	White River Junction	Can. Vt. Ry.	12 00	12 35	15 35	16 05		
13 40	12 40	12 40	Arr.	Montpelier	Can. Vt. Ry.	12 05	12 40	15 40	16 10		
13 45	12 45	12 45	Arr.	Burlington	Can. Vt. Ry.	12 10	12 45	15 45	16 15		
13 50	12 50	12 50	Arr.	Essex Junction	Can. Vt. Ry.	12 15	12 50	15 50	16 20		
13 55	12 55	12 55	Arr.	Bellow's Falls	Can. Vt. Ry.	12 20	12 55	15 55	16 25		
14 00	13 00	13 00	Arr.	Windsor	Can. Vt. Ry.	12 25	13 00	16 00	16 30		
14 05	13 05	13 05	Arr.	White River Junction	Can. Vt. Ry.	12 30	13 05	16 05	16 35		
14 10	13 10	13 10	Arr.	Montpelier	Can. Vt. Ry.	12 35	13 10	16 10	16 40		
14 15	13 15	13 15	Arr.	Burlington	Can. Vt. Ry.	12 40	13 15	16 15	16 45		
14 20	13 20	13 20	Arr.	Essex Junction	Can. Vt. Ry.	12 45	13 20	16 20	16 50		
14 25	13 25	13 25	Arr.	Bellow's Falls	Can. Vt. Ry.	12 50	13 25	16 25	16 55		
14 30	13 30	13 30	Arr.	Windsor	Can. Vt. Ry.	12 55	13 30	16 30	17 00		
14 35	13 35	13 35	Arr.	White River Junction	Can. Vt. Ry.	13 00	13 35	16 35	17 05		
14 40	13 40	13 40	Arr.	Montpelier	Can. Vt. Ry.	13 05	13 40	16 40	17 10		
14 45	13 45	13 45	Arr.	Burlington	Can. Vt. Ry.	13 10	13 45	16 45	17 15		
14 50	13 50	13 50	Arr.	Essex Junction	Can. Vt. Ry.	13 15	13 50	16 50	17 20		
14 55	13 55	13 55	Arr.	Bellow's Falls	Can. Vt. Ry.	13 20	13 55	16 55	17 25		
15 00	14 00	14 00	Arr.	Windsor	Can. Vt. Ry.	13 25	14 00	17 00	17 30		
15 05	14 05	14 05	Arr.	White River Junction	Can. Vt. Ry.	13 30	14 05	17 05	17 35		
15 10	14 10	14 10	Arr.	Montpelier	Can. Vt. Ry.	13 35	14 10	17 10	17 40		
15 15	14 15	14 15	Arr.	Burlington	Can. Vt. Ry.	13 40	14 15	17 15	17 45		
15 20	14 20	14 20	Arr.	Essex Junction	Can. Vt. Ry.	13 45	14 20	17 20	17 50		
15 25	14 25	14 25	Arr.	Bellow's Falls	Can. Vt. Ry.	13 50	14 25	17 25	17 55		
15 30	14 30	14 30	Arr.	Windsor	Can. Vt. Ry.	13 55	14 30	17 30	18 00		
15 35	14 35	14 35	Arr.	White River Junction	Can. Vt. Ry.	14 00	14 35	17 35	18 05		
15 40	14 40	14 40	Arr.	Montpelier	Can. Vt. Ry.	14 05	14 40	17 40	18 10		
15 45	14 45	14 45	Arr.	Burlington	Can. Vt. Ry.	14 10	14 45	17 45	18 15		
15 50	14 50	14 50	Arr.	Essex Junction	Can. Vt. Ry.	14 15	14 50	17 50	18 20		
15 55	14 55	14 55	Arr.	Bellow's Falls	Can. Vt. Ry.	14 20	14 55	17 55	18 25		
16 00	15 00	15 00	Arr.	Windsor	Can. Vt. Ry.	14 25	15 00	18 00	18 30		
16 05	15 05	15 05	Arr.	White River Junction	Can. Vt. Ry.	14 30	15 05	18 05	18 35		
16 10	15 10	15 10	Arr.	Montpelier	Can. Vt. Ry.	14 35	15 10	18 10	18 40		
16 15	15 15	15 15	Arr.	Burlington	Can. Vt. Ry.	14 40	15 15	18 15	18 45		
16 20	15 20	15 20	Arr.	Essex Junction	Can. Vt. Ry.	14 45	15 20	18 20	18 50		
16 25	15 25	15 25	Arr.	Bellow's Falls	Can. Vt. Ry.	14 50	15 25	18 25	18 55		
16 30	15 30	15 30	Arr.	Windsor	Can. Vt. Ry.	14 55	15 30	18 30	19 00		
16 35	15 35	15 35	Arr.	White River Junction	Can. Vt. Ry.	15 00	15 35	18 35	19 05		
16 40	15 40	15 40	Arr.	Montpelier	Can. Vt. Ry.	15 05	15 40	18 40	19 10		
16 45	15 45	15 45	Arr.	Burlington	Can. Vt. Ry.	15 10	15 45	18 45	19 15		
16 50	15 50	15 50	Arr.	Essex Junction	Can. Vt. Ry.	15 15	15 50	18 50	19 20		
16 55	15 55	15 55	Arr.	Bellow's Falls	Can. Vt. Ry.	15 20	1				

10 40am	6 00 pm	Ar. St. Albans	Lv. † 2 55m	6 00 pm
9 45	5 05	Ar. Raous Point	Lv. † 2 10	5 05
9 10	4 40	Ar. Moses Junction	Lv. † 2 30	4 40
8 09	4 15	Ar. Chateaugay	Lv. † 2 55	4 15
7 13	3 40	Ar. Moira	Lv. † 2 40	3 40
6 38	3 10	Ar. Newburg	Lv. † 2 10	3 10
5 40	2 30	Lv. Ogdensburg	Ar. † 1 30	2 30

For through trains via the Central Vermont Railway, see "Condensed Time Table Between Boston, New York and Montreal."

Montreal and Sorel Railway—Connects at St. Lambert, P.Q.

11 25am	7 00 pm	Ar. Sorel	Lv. † 1 15am	12 00 pm
9 25	6 00	Ar. St. Lambert	Lv. † 8 30	3 30
7 00	5 00	Lv. Montreal (G. T. R.)	Ar. † 8 40	4 00

CANADA ATLANTIC RAILWAY—Connects in Union Depot at Coteau Jct., P.Q.

8 10 pm	12 30 pm	11 42am	Ar. Ottawa	Lv. † 8 00am	† 1 30 pm	† 4 00 pm
6 22	11 10am	Ar. Maxville	Lv. 9 18	1 00	5 00	6 00
6 31	10 55	10 08	Ar. Alexandria	Lv. 9 39	2 00	6 30
6 40	10 45	9 10	Ar. Glen Barton	Lv. 9 53	1 15	6 40
6 40	10 05	† 9 24am	Lv. Coteau Junction	Ar. 10 25	3 36	7 16
† 4 30	† 8 50		Lv. Montreal (G. T. R.)	Ar. 11 30	7 30	† 2 20

THOUSAND ISLANDS RAILWAY—Connects in Union Depot at Gananoque Jc., Ont.

P. M.	P. M.	A. M.	A. M.	A. M.	A. M.	P. M.	P. M.	P. M.	P. M.
7 05	3 35	2 45	7 35	2 49	Ar. Gananoque Wharf	Lv. † 1 20	† 1 45	† 2 35	† 3 45
6 40	3 10	† 2 30	7 30	2 25	Lv. King St. Station	Ar. † 1 25	† 1 50	† 2 45	† 3 55
† 7 30	† 8 10	† 2 30	† 7 15	† 2 10	Lv. Gananoque Jc.	Ar. † 1 40	† 2 05	† 2 50	† 4 00

KINGSTON & PEMBROKE RAILWAY—Connects at Kingston, Ont.

A. M.	P. M.	P. M.	P. M.	A. M.	P. M.	P. M.	P. M.
1 50	7 10	3 45	10 45	Ar. Renfrew	Lv. † 2 30	† 2 40	† 3 40
1 50	7 10	3 45	10 45	Ar. Sharbot Lake	Lv. 6 30	2 45	7 10
1 50	7 10	3 45	10 45	Lv. Kingston	Ar. 9 30	4 40	10 10

BAY OF QUINTE RAILWAY—Connects in Union Depot at Deseronto Jc. Ont.

A. M.	P. M.	P. M.	P. M.	A. M.	P. M.	P. M.	P. M.	
1 50	11 20	6 50	1 15	10 05	4 25	Deseronto Wharf	3 30	9 00
1 50	11 20	6 50	1 15	10 05	4 25	East End	3 35	9 05
1 50	11 20	6 50	1 15	10 05	4 25	Deseronto Jct.	3 50	9 20

NAPANEE, TAMWORTH & QUEBEC R.Y.—Connects in Union Depot at Napanee, Ont.

	P. M.	P. M.	A. M.	P. M.	P. M.	P. M.	P. M.
	6 55	1 30	Ar. Tamworth	Lv. † 6 40	† 2 30		
	6 15	12 55	Ar. Moscow	Lv. 7 15	3 05		
	6 43	12 25	Ar. Campden Falls	Lv. 7 45	3 35		
	6 28	12 05	Ar. Napanee East	Lv. 8 00	3 50		
	6 10	11 50	Lv. Napanee	Ar. 8 20	4 15		

CENTRAL ONTARIO RAILWAY—Connects in Union Depot at Trenton Jc., Ont.

P. M.	A. M.	P. M.	A. M.	A. M.	P. M.	P. M.	P. M.
8 30	8 40	7 00	6 50	Ar. Picton	Lv. † 9 00	† 8 45	
7 05	7 15	6 50	6 40	Ar. Trenton	Lv. 10 15	8 15	† 8 30
† 8 30	† 8 40	† 6 40	† 6 30	Lv. Trenton Jc.	Ar. 10 27	8 25	† 10 40
8 00	8 10	6 50	6 40	Ar. Coe Hill	Lv. 6 00	† 8 20	
6 10	12 23	Ar. Eldorado	Lv. 7 45	3 47			
6 30	11 13	Ar. Midland Ry Jct.	Lv. 9 15	† 8 00			
† 6 45	† 7 40	Lv. Trenton Jc.	Ar. 9 50	8 40			

LAKE SHORE & MICHIGAN SOUTHERN RAILWAY—Connects in Union Depot at Detroit Mich.

10 15am	12 25 pm	6 45 pm	Ar. Detroit	Lv. † 7 30am	† 6 00 pm
9 21	11 25	6 25	Ar. Leamington	Lv. † 6 45	5 05
8 47	11 00	6 15	Ar. Muskegon	Lv. † 6 25	4 30
† 7 41	† 10 50	† 5 50	Ar. Toledo	Lv. † 6 05	4 30

GRAND RAPIDS & INDIANA RAILROAD

P. M.	A. M.	P. M.	P. M.	P. M.	P. M.	P. M.	A. M.	A. M.	A. M.	A. M.
9 38	7 15	7 17	Ar. Aikensburg	Lv. † 8 15	† 6 07					
9 05	1 40	6 00	Ar. Kalamazoo	Lv. † 8 30	† 6 25	7 19				
† 7 15	† 11 45	† 5 00	Lv. Grand Rapids	Ar. † 8 45	† 6 35	† 9 05				
10 45	8 15	4 45	Ar. Grand Rapids	Lv. † 9 05	† 7 10	† 11 15				
10 35	11 25	4 30	Ar. Muskegon	Lv. † 9 20	† 7 20	† 11 25				
† 8 30	† 10 25	† 4 15	Ar. Howard City	Ar. † 9 30	† 7 30	† 11 35				
			Ar. Big Rapids	Ar. † 9 45	† 7 40	† 11 45				
			Ar. Reed City	Ar. † 9 55	† 7 50	† 11 55				
			Ar. Cadillac	Ar. † 10 05	† 8 00	† 12 05				
			Ar. Watron	Ar. † 12 19	† 11 40	† 8 20				
			Ar. Teasdale	Ar. † 1 30		† 6 35				
			Ar. Muskegon	Ar. † 1 38		† 6 05				
			Ar. Markinaw City	Ar. † 1 45		† 5 30				

CHICAGO & WEST MICHIGAN RAILWAY

P. M.	P. M.	A. M.	P. M.	A. M.	P. M.	A. M.	P. M.	A. M.	P. M.	A. M.	P. M.
3 00	1 20	8 25	Ar. Benton Harbor	Lv. † 7 00	† 12 30						
2 00	11 30	1 00	Ar. Grand Jct.	Lv. † 8 07	† 4 10	† 2 00					
1 10	10 40	12 11	Lv. Holland	Ar. † 9 00	† 3 00	† 3 00					
9 00	1 10	9 50	Ar. Holland	Lv. † 10 10	† 5 30	† 9 50					
† 8 10	† 12 25	† 11 50	Ar. Holland	Lv. † 10 20	† 5 40	† 10 20					
			Ar. Grand Rapids	Ar. † 10 30	† 5 50	† 10 30					
			Ar. Grand Rapids	Ar. † 10 40	† 6 00	† 10 40					
			Lv. White Cloud	Ar. † 10 50	† 6 10	† 10 50					
			Lv. Baldwin	Ar. † 11 15	† 6 35	† 11 15					
			Ar. Holland	Lv. † 10 10	† 5 30	† 10 10					
			Ar. Grand Haven	Lv. † 10 20	† 5 40	† 10 20					
			Lv. Muskegon	Ar. † 10 30	† 5 50	† 10 30					
			Lv. Pentwater	Ar. † 10 40	† 6 00	† 10 40					
			Lv. White Cloud	Ar. † 10 50	† 6 10	† 10 50					
			Lv. Big Rapids	Ar. † 11 00	† 6 20	† 11 00					

PONTIAC, OXFORD & PORT AUSTIN RAILROAD

9 05 pm	10 30am	Ar. Pontiac	Lv. † 8 50am	† 8 45 pm
7 35	9 30	Ar. Oxford	Lv. 9 05	8 45
6 25	7 40	Ar. Imlay City	Lv. 10 05	8 15
5 15	6 24	Ar. Clinton	Lv. 11 05	7 45
† 3 10		Ar. Chesville	Ar. † 1 25	

TOLEDO, ANN ARBOR & NORTH MICHIGAN RAILWAY

11 10 pm	11 00 pm	Ar. Toledo	Lv. † 12 30 pm	† 3 35 am
12 34	10 25	Ar. Munroe Junc.	Lv. † 1 05	† 6 10
12 11	9 10	Ar. Milan	Lv. † 1 21	† 6 40
11 25 am	8 05	Ar. Ann Arbor	Lv. † 1 37	† 7 10
11 10	7 05	Ar. LeLauds	Lv. † 1 53	† 7 35
8 40		Lv. South Lyon	Ar. † 2 09	† 8 30
10 48 am	8 40 pm	Lv. Hamburg	Ar. † 2 25	† 7 55
10 42	8 10	Lv. Hamburg Jct.	Ar. † 2 41	† 8 15
10 11	7 15	Lv. Howell	Ar. † 2 57	† 8 45
9 35	7 30	Lv. Durand	Ar. † 3 13	† 9 15
9 00	6 32	Lv. Owosso	Ar. † 3 29	† 9 35
7 23	5 40	Lv. Alma	Ar. † 3 45	† 10 05
16 40 am	4 45	Ar. Pleasant	Ar. † 4 01	† 10 35
12 00 pm	4 15	Lv. Cadillac	Ar. † 4 17	† 11 05

