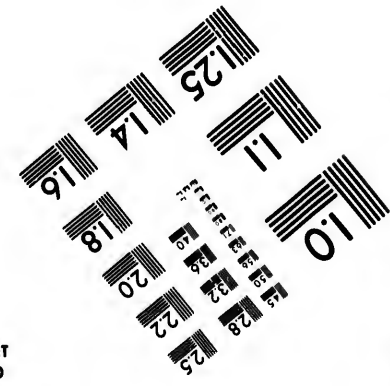
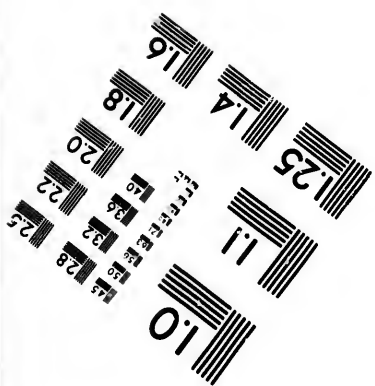
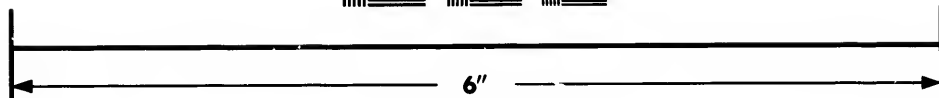
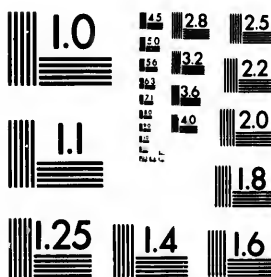


**IMAGE EVALUATION
TEST TARGET (MT-3)**



**Photographic
Sciences
Corporation**

23 WEST MAIN STREET
WEBSTER, N.Y. 14580
(716) 872-4503

18
20
22
25

**CIHM/ICMH
Microfiche
Series.**

**CIHM/ICMH
Collection de
microfiches.**



Canadian Institute for Historical Microreproductions / Institut canadien de microreproductions historiques

10
51

© 1987

Technical and Bibliographic Notes/Notes techniques et bibliographiques

The Institute has attempted to obtain the best original copy available for filming. Features of this copy which may be bibliographically unique, which may alter any of the images in the reproduction, or which may significantly change the usual method of filming, are checked below.

L'Institut a microfilmé le meilleur exemplaire qu'il lui a été possible de se procurer. Les détails de cet exemplaire qui sont peut-être uniques du point de vue bibliographique, qui peuvent modifier une image reproduite, ou qui peuvent exiger une modification dans la méthode normale de filmage sont indiqués ci-dessous.

- Coloured covers/
Couverture de couleur
- Covers damaged/
Couverture endommagée
- Covers restored and/or laminated/
Couverture restaurée et/ou pelliculée
- Cover title missing/
Le titre de couverture manque
- Coloured maps/
Cartes géographiques en couleur
- Coloured ink (i.e. other than blue or black)/
Encre de couleur (i.e. autre que bleue ou noire)
- Coloured plates and/or illustrations/
Planches et/ou illustrations en couleur
- Bound with other material/
Relié avec d'autres documents
- Tight binding may cause shadows or distortion along interior margin/
La reliure serrée peut causer de l'ombre ou de la distorsion le long de la marge intérieure
- Blank leaves added during restoration may appear within the text. Whenever possible, these have been omitted from filming/
Il se peut que certaines pages blanches ajoutées lors d'une restauration apparaissent dans le texte, mais, lorsque cela était possible, ces pages n'ont pas été filmées.
- Additional comments: [Printed ephemera] 1 sheet (verso blank)
Commentaires supplémentaires:
- Coloured pages/
Pages de couleur
- Pages damaged/
Pages endommagées
- Pages restored and/or laminated/
Pages restaurées et/ou pelliculées
- Pages discoloured, stained or foxed/
Pages décolorées, tachetées ou piquées
- Pages detached/
Pages détachées
- Showthrough/
Transparence
- Quality of print varies/
Qualité inégale de l'impression
- Includes supplementary material/
Comprend du matériel supplémentaire
- Only edition available/
Seule édition disponible
- Pages wholly or partially obscured by errata slips, tissues, etc., have been refilmed to ensure the best possible image/
Les pages totalement ou partiellement obscurcies par un feuillet d'errata, une pelure, etc., ont été filmées à nouveau de façon à obtenir la meilleure image possible.

This item is filmed at the reduction ratio checked below/
Ce document est filmé au taux de réduction indiqué ci-dessous.

10X	14X	18X	22X	26X	30X
<input type="checkbox"/>	<input type="checkbox"/>	<input type="checkbox"/>	<input type="checkbox"/>	<input checked="" type="checkbox"/>	<input type="checkbox"/>
12X	16X	20X	24X	28X	32X

The copy filmed here has been reproduced thanks to the generosity of:

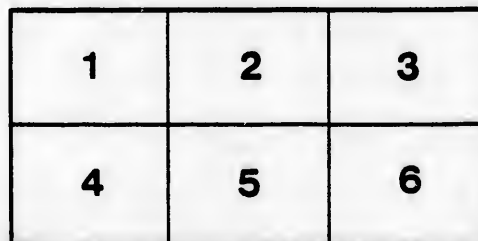
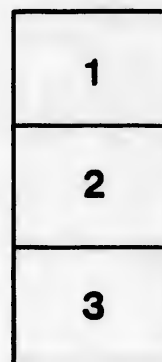
Manuscript Division
Public Archives of Canada

The images appearing here are the best quality possible considering the condition and legibility of the original copy and in keeping with the filming contract specifications.

Original copies in printed paper covers are filmed beginning with the front cover and ending on the last page with a printed or illustrated impression, or the back cover when appropriate. All other original copies are filmed beginning on the first page with a printed or illustrated impression, and ending on the last page with a printed or illustrated impression.

The last recorded frame on each microfiche shall contain the symbol \rightarrow (meaning "CONTINUED"), or the symbol ∇ (meaning "END"), whichever applies.

Maps, plates, charts, etc., may be filmed at different reduction ratios. Those too large to be entirely included in one exposure are filmed beginning in the upper left hand corner, left to right and top to bottom, as many frames as required. The following diagrams illustrate the method:



L'exemplaire filmé fut reproduit grâce à la générosité de:

Division des manuscrits
Archives publiques du Canada

Les images suivantes ont été reproduites avec le plus grand soin, compte tenu de la condition et de la netteté de l'exemplaire filmé, et en conformité avec les conditions du contrat de filmage.

Les exemplaires originaux dont la couverture en papier est imprimée sont filmés en commençant par le premier plat et en terminant soit par la dernière page qui comporte une empreinte d'impression ou d'illustration, soit par le second plat, selon le cas. Tous les autres exemplaires originaux sont filmés en commençant par la première page qui comporte une empreinte d'impression ou d'illustration et en terminant par la dernière page qui comporte une telle empreinte.

Un des symboles suivants apparaîtra sur la dernière image de chaque microfiche, selon le cas: le symbole \rightarrow signifie "A SUIVRE", le symbole ∇ signifie "FIN".

Les cartes, planches, tableaux, etc., peuvent être filmés à des taux de réduction différents. Lorsque le document est trop grand pour être reproduit en un seul cliché, il est filmé à partir de l'angle supérieur gauche, de gauche à droite, et de haut en bas, en prenant le nombre d'images nécessaire. Les diagrammes suivants illustrent la méthode.

re
détails
de du
modifier
er une
filmage

es

errata
d to

t
e pelure,
con à



32X

Memorial to the late Reverend Doctor Ryerson.

APPEAL

To Trustees, Inspectors, Teachers and Pupils—past and present
—connected with Public, Separate and High Schools, and to
the other friends of Education, in the Province of Ontario;
from the General Committee appointed at Toronto, on the
14th of March, 1882, for the collection of Funds with
which to erect a

Monument, or other Tribute of Esteem and Admiration,
to the memory of the late Rev. Dr. Ryerson, Founder of
the Educational System of Ontario.

Although still young, our Province has already been called to mourn the removal of not a few of her gifted sons, who have severally adorned the different walks of public life. In weight of character, wealth of manhood and width of human sympathy, the late Chief Superintendent of Education stood amongst the foremost and mightiest of them all.

Egerton Ryerson was a man of rare diversity of gifts, of remarkable energy, and of abundant mental resources. It would have been easy for him to have excelled in any one sphere of human greatness, but it was his to stand high in several. He was a many-sided man; richly endowed in various ways. He was a laborious farmer—a zealous student—a successful teacher—an eminent preacher,—a prominent ecclesiastic,—an influential editor,—a forcible writer,—a sagacious counsellor,—a most efficient principal and professor,—but he was chiefly noted as a *great public educationist*.

For a third of a century he was the head and inspiring genius of our school system, establishing, moulding, adapting, controlling it; and this, the main work of his life, will endure, and command in the future, as it has in the past, the admiration of all both at home and abroad. During all these years he was the teacher's true friend, and the ardent well-wisher of the young. His sympathies—tender and true,—as helpful as they were healthy, went out to every earnest worker, whether in acquiring or imparting knowledge. The enquiring left his presence directed; the downcast, cheered; the doubtful, confirmed.

Unselfish, generous, disinterested, he devoted himself wholly to his work. How often did his lip quiver and his eye fill when he addressed the gatherings of teachers and pupils upon whom he looked not only with the eye of a patriot, but of a parent,—“Ye are my children all.”

We can never forget him; we profoundly mourn our loss; we fondly cherish his memory. Affection, gratitude, a sense of what is due to so eminent a man, impel us to perpetuate that memory in some suitable way, which will render such a noble life an inspiring example to young men now and in the coming days.

In obedience then to one of the purest and loftiest instincts of our nature, let us unite in paying a common tribute of admiration and regard to the memory of him to whom we all sustained a common relationship, and to whom we also, without distinction as to nationality, political preferences or religious belief, can pay sincere homage, as the founder of our present excellent and comprehensive system of education.

In honouring him we do honour to our common country, and recognize our obligation to pay fitting homage to the great men of our Dominion whose names with his are inscribed high upon the roll of Canada's famous sons.

WM. ORMISTON, (New York). } Committee.
J. GEORGE HODGINS, }

Signed on behalf of the General Committee,

JAMES L. HUGHES, *Secretary*.

J. GEORGE HODGINS, *Chairman*.

GENERAL COMMITTEE.

Dr. Hodgins, Chairman; Hon. Adam Crooks, Minister of Education; Rev. Principal Davies; Principal McCabe; Rev. Dr. Ormiston of New York; Archbishop Lynch; Very Rev. Principal Caven, Knox College; Rev. President Castle, Toronto Baptist College; Rev. Father Vincent, Superior, St. Michael's College; President Wilson and Prof. Young, Toronto University; Rev. President Nelles, Victoria University; Rev. Provost Body, Trinity College; Very Rev. Principal Grant, Queen's University; Rev. President Jaques, President, Albert University; A. McMurchy, M.A., President, Ontario Teachers' Association; Edward Galley, Esq., Chairman, Public School Board; Vicar-General Rooney, Chairman Separate School Board; Dr. McLellan, Inspector, High Schools; Mr. White, Inspector, Separate Schools for Ontario; Rev. Bro. Tobias, Inspector, Separate Schools; J. S. Carson, Esq., Chairman, Inspectors' Section, Ontario Teachers' Association; R. Lewis, Esq., Chairman, Public School Section; D. C. McHenry, M.A., Chairman, High School Section; Messrs. S. McAllister, R. W. Doan, and F. H. Spence, Legislative Committee of the Teachers' Session of the Provincial Association; also the Public School Inspectors throughout the Province as *ex officio* members.

Mr. James L. Hughes was appointed Secretary of the Committee, and Mr. Walter S. Lee, Treasurer.

