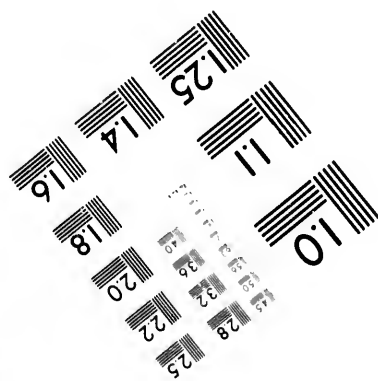
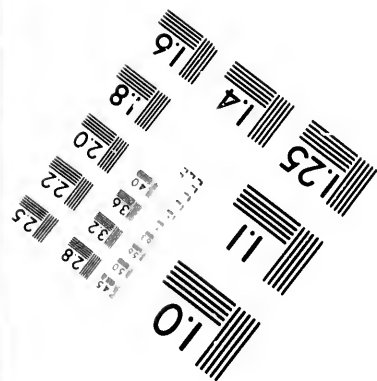
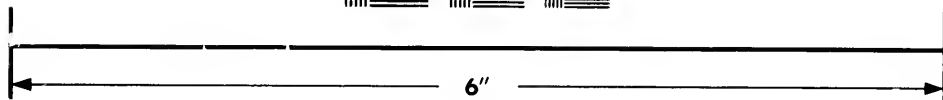
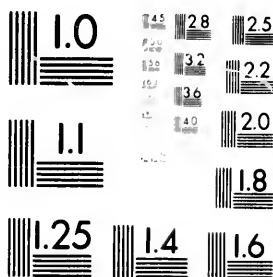


**IMAGE EVALUATION
TEST TARGET (MT-3)**



**Photographic
Sciences
Corporation**

23 WEST MAIN STREET
WEBSTER, N.Y. 14580
(716) 872-4503

24
28
32
36
40
44
48
52
56
60
64
68
72
76
80
84
88
92
96
100

**CIHM/ICMH
Microfiche
Series.**

**CIHM/ICMH
Collection de
microfiches.**

10



Canadian Institute for Historical Microreproductions

Institut canadien de microreproductions historiques

1980

Technical and Bibliographic Notes/Notes techniques et bibliographiques

The Institute has attempted to obtain the best original copy available for filming. Features of this copy which may be bibliographically unique, which may alter any of the images in the reproduction, or which may significantly change the usual method of filming, are checked below.

L'institut a microfilmé le meilleur exemplaire qu'il lui a été possible de se procurer. Les détails de cet exemplaire qui sont peut-être uniques du point de vue bibliographique, qui peuvent modifier une image reproduite, ou qui peuvent exiger une modification dans la méthode normale de filmage sont indiqués ci-dessous.

- Coloured covers/
Couverture de couleur
- Covers damaged/
Couverture endommagée
- Covers restored and/or laminated/
Couverture restaurée et/ou pelliculée
- Cover title missing/
Le titre de couverture manque
- Coloured maps/
Cartes géographiques en couleur
- Coloured ink (i.e. other than blue or black)/
Encre de couleur (i.e. autre que bleue ou noire)
- Coloured plates and/or illustrations/
Planches et/ou illustrations en couleur
- Bound with other material/
Relié avec d'autres documents
- Tight binding may cause shadows or distortion along interior margin/
La reliure serrée peut causer de l'ombre ou de la distorsion le long de la marge intérieure
- Blank leaves added during restoration may appear within the text. Whenever possible, these have been omitted from filming/
Il se peut que certaines pages blanches ajoutées lors d'une restauration apparaissent dans le texte, mais, lorsque cela était possible, ces pages n'ont pas été filmées.
- Additional comments:/
Commentaires supplémentaires:

- Coloured pages/
Pages de couleur
- Pages damaged/
Pages endommagées
- Pages restored and/or laminated/
Pages restaurées et/ou pelliculées
- Pages discoloured, stained or foxed/
Pages décolorées, tachetées ou piquées
- Pages detached/
Pages détachées
- Showthrough/
Transparence
- Quality of print varies/
Qualité inégale de l'impression
- Includes supplementary material/
Comprend du matériel supplémentaire
- Only edition available/
Seule édition disponible
- Pages wholly or partially obscured by errata slips, tissues, etc., have been refilmed to ensure the best possible image/
Les pages totalement ou partiellement obscurcies par un feuillet d'errata, une pelure, etc., ont été filmées à nouveau de façon à obtenir la meilleure image possible.

This item is filmed at the reduction ratio checked below/
Ce document est filmé au taux de réduction indiqué ci-dessous.

| | | | | | |
|--------------------------|--------------------------|--------------------------|-------------------------------------|--------------------------|--------------------------|
| 10X | 14X | 18X | 22X | 26X | 30X |
| <input type="checkbox"/> | <input type="checkbox"/> | <input type="checkbox"/> | <input checked="" type="checkbox"/> | <input type="checkbox"/> | <input type="checkbox"/> |
| 12X | 16X | 20X | 24X | 28X | 32X |

The copy filmed here has been reproduced thanks to the generosity of:

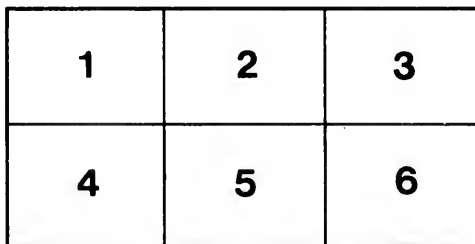
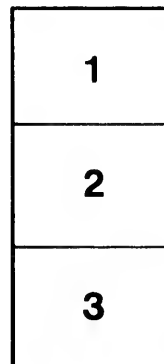
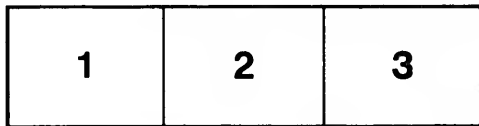
Library,
Geological Survey of Canada

The images appearing here are the best quality possible considering the condition and legibility of the original copy and in keeping with the filming contract specifications.

Original copies in printed paper covers are filmed beginning with the front cover and ending on the last page with a printed or illustrated impression, or the back cover when appropriate. All other original copies are filmed beginning on the first page with a printed or illustrated impression, and ending on the last page with a printed or illustrated impression.

The last recorded frame on each microfiche shall contain the symbol \rightarrow (meaning "CONTINUED"), or the symbol ∇ (meaning "END"), whichever applies.

Maps, plates, charts, etc., may be filmed at different reduction ratios. Those too large to be entirely included in one exposure are filmed beginning in the upper left hand corner, left to right and top to bottom, as many frames as required. The following diagrams illustrate the method:



L'exemplaire filmé fut reproduit grâce à la générosité de:

Bibliothèque,
Commission Géologique du Canada

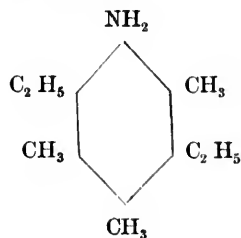
Les images suivantes ont été reproduites avec le plus grand soin, compte tenu de la condition et de la netteté de l'exemplaire filmé, et en conformité avec les conditions du contrat de filmage.

Les exemplaires originaux dont la couverture en papier est imprimée sont filmés en commençant par le premier plat et en terminant soit par la dernière page qui comporte une empreinte d'impression ou d'illustration, soit par le second plat, selon le cas. Tous les autres exemplaires originaux sont filmés en commençant par la première page qui comporte une empreinte d'impression ou d'illustration et en terminant par la dernière page qui comporte une telle empreinte.

Un des symboles suivants apparaîtra sur la dernière image de chaque microfiche, selon le cas: le symbole \rightarrow signifie "A SUIVRE", le symbole ∇ signifie "FIN".

Les cartes, planches, tableaux, etc., peuvent être filmés à des taux de réduction différents. Lorsque le document est trop grand pour être reproduit en un seul cliché, il est filmé à partir de l'angle supérieur gauche, de gauche à droite, et de haut en bas, en prenant le nombre d'images nécessaire. Les diagrammes suivants illustrent la méthode.

According to the researches of Froelich,* the methyl groups in pseudo-cumidine, occupy the positions 2, 4 and 5, the amido group being 1. There are thus only the positions 3 and 6 left for the ethyl groups to fill. The constitutional formula for the base is therefore—



ON THE OCCURRENCE OF SCOLITHUS IN ROCKS OF THE CHAZY FORMATION ABOUT OTTAWA, ONTARIO.

By HENRY M. AMI, M.A., F.G.S.

For years past, the occurrence of *Scolithus* in the lower portion of the Cambro-Silurian or Ordovician strata, as it is developed in the St. Lawrence and Ottawa Valleys, as well as in the State of New York and elsewhere, was almost invariably taken as the best indication of the presence of the Potsdam formation.

Scolithus Canadensis, as described by the late Mr. E. Billings in his first volume of the Palæozoic Fossils, p. 96, was shewn to be eminently characteristic of the Potsdam formation, its occurrence in a number of localities having been recorded by him. Since then it has also been found in rocks of the same horizon in various other localities, and well recognized by geologists in general.

The form *Scolithus linearis*, of Hall, is also referred to by Mr. Billings, as occurring in the measures of the Potsdam, as seen at L'Anse au Loup (*loc. cit.* p. 2), but in no other Cambrian or Ordovician formation have the remains of *Scolithus* been recognised as yet, as far as the writer is aware.

* Berichte, xvii, 2573.

In the examination of the measures of the Chazy formation about Ottawa, however, the writer has observed numerous scolithoid remains from strata newer than those at L'Anse au Loup or at Ste. Anne's, Beauharnois, &c.

At the Hog's Back, Nepean, in the county of Carleton, Ont., about three miles from Ottawa city, the Chazy formation crops out in the shape of a partially denuded anticlinal, exhibiting on the eastern side of its axis a considerable thickness of strata consisting of sandstones, sandy shales with calcareous matter, and limestones, given in their natural and stratigraphical sequence from the base up. Some of the shales in the exposure are decidedly argillaceous in character, and hold abundance of a species of *Lingula*—the *L. Belli* (Billings). This band marks a well defined zone in our Chazy formation, and is referred to as the zone of *Lingula Belli* (see Geol. Rep. Trans. O. F. N. C., 1885-1886.) Above this zone, and a few feet above the *Scolithus* horizon, the "Leperditia band" occurs here in its normal condition, as described by Sir William Logan and Mr. Billings in the publications of the Geological Survey of Canada at various dates, so that the intermediate beds of an arenaceous nature, on careful examination, are seen to contain abundance of a species of *Scolithus* differing but little, if any, from the true *S. Canadensis* (Billings). The characters of this last agree admirably with the form of those from Hog's Back, although there is no doubt whatever as to the age of the series in question being Chazy.

The second place where the genus in question has been observed is at Britannia, Ont., near the southern shores of Lake Des Chênes, on the Ottawa River, six miles west of Ottawa city. There at Britannia, some four hundred yards south-west of the railroad crossing or station, numerous remains of a species of *Scolithus* were collected on the occasion of the excursion of the Field Naturalists' Club, in September, 1885. On finding it, the question arose, and has since formed the subject of a slight controversy, as to whether or not the rocks there were really Chazy, or that on account of the occurrence of these annelid (?) burrows, the rocks ought to be ascribed to the age of the Potsdam

formation. Fortunately, the occurrence of a similar form in the Chazy of Hog's Back had been previously ascertained so that this fact, coupled with the one that the almost perfectly horizontal strata on the Quebec side of the Ottawa, were truly Chazy, and characterised by the prevalence of such types as *Orthis imperator* (Billings), and a *Rhynchonella* not distinguishable from the *R. plena* of Hall—which measures extended across the river to the Ontario side, beneath the waters of the lake and rapids, without a fault or dislocation in well-nigh horizontal beds—make it beyond doubt that these rocks at Britannia are truly Chazy.

From these two instances, it follows that the occurrence of *Scolithus* remains does not necessarily indicate the existence of Potsdam rocks, but that the beds may possibly be newer or higher up in the series. These cases also indicate the necessity of obtaining collateral evidence of every nature, whether palæontological or stratigraphical, in order to ascertain with any degree of accuracy the precise geological horizon of strata.

THE RHYTHM AND INNERVATION OF THE HEART OF THE SEA-TURTLE.*

By T. WESLEY MILLS, MA., M.D., L.R.C.P.,*¹ENGL.

Professor of Physiology, McGill University, Montreal.

The present paper is intended in part as a continuation of a shorter one which appeared in Nos. 4, 5, 6, of vol. v. of the *Journal of Physiology* on the same subject; but more especially as a continuation of my work on Chelonian heart physiology in general. So far as I know there does not exist in physiology a *systematic* comparison of the resemblances and differences of any one family or genus. I propose therefore to do for the Chelonians in physiology, to some extent at least, what has been done for them in morphology.

It has hitherto been believed that animals resembling

* This paper has also very recently appeared in the *Jour. of Anat. and Phys.*, Edinburgh.

