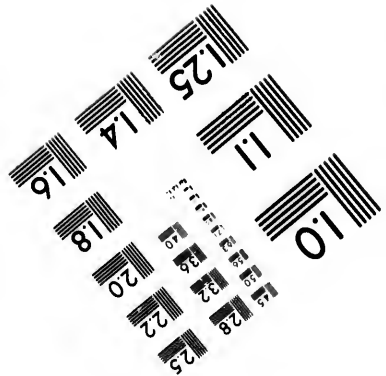
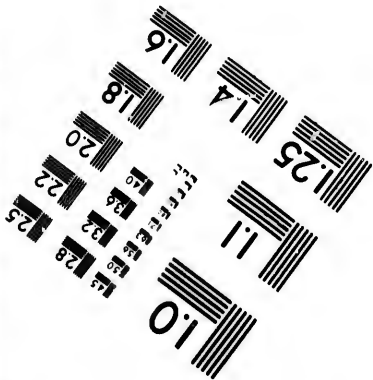
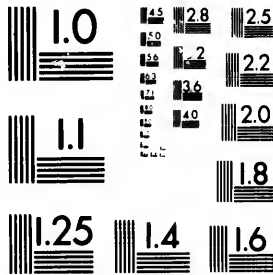


**IMAGE EVALUATION
TEST TARGET (MT-3)**



28
24
22
20

**CIHM/ICMH
Microfiche
Series.**

**CIHM/ICMH
Collection de
microfiches.**

10



Canadian Institute for Historical Microreproductions

Institut canadien de microreproductions historiques

1980

Technical and Bibliographic Notes/Notes techniques et bibliographiques

The Institute has attempted to obtain the best original copy available for filming. Features of this copy which may be bibliographically unique, which may alter any of the images in the reproduction, or which may significantly change the usual method of filming, are checked below.

L'Institut a microfilmé le meilleur exemplaire qu'il lui a été possible de se procurer. Les détails de cet exemplaire qui sont peut-être uniques du point de vue bibliographique, qui peuvent modifier une image reproduite, ou qui peuvent exiger une modification dans la méthode normale de filmage sont indiqués ci-dessous.

- Coloured covers/
Couverture de couleur
- Covers damaged/
Couverture endommagée
- Covers restored and/or laminated/
Couverture restaurée et/ou pelliculée
- Cover title missing/
Le titre de couverture manque
- Coloured maps/
Cartes géographiques en couleur
- Coloured ink (i.e. other than blue or black)/
Encre de couleur (i.e. autre que bleue ou noire)
- Coloured plates and/or illustrations/
Planches et/ou illustrations en couleur
- Bound with other material/
Relié avec d'autres documents
- Tight binding may cause shadows or distortion
along interior margin/
La reliure serrée peut causer de l'ombre ou de la
distortion le long de la marge intérieure
- Blank leaves added during restoration may
appear within the text. Whenever possible, these
have been omitted from filming/
!! se peut que certaines pages blanches ajoutées
lors d'une restauration apparaissent dans le texte,
mais, lorsque cela était possible, ces pages n'ont
pas été filmées.
- Additional comments:/
Commentaires supplémentaires:

- Coloured pages/
Pages de couleur
- Pages damaged/
Pages endommagées
- Pages restored and/or laminated/
Pages restaurées et/ou pelliculées
- Pages discoloured, stained or foxed/
Pages décolorées, tachetées ou piquées
- Pages detached/
Pages détachées
- Showthrough/
Transparence
- Quality of print varies/
Qualité inégale de l'impression
- Includes supplementary material/
Comprend du matériel supplémentaire
- Only edition available/
Seule édition disponible
- Pages wholly or partially obscured by errata
slips, tissues, etc., have been refilmed to
ensure the best possible image/
Les pages totalement ou partiellement
obscurcies par un feuillet d'errata, une pelure,
etc., ont été filmées à nouveau de façon à
obtenir la meilleure image possible.

This item is filmed at the reduction ratio checked below/
Ce document est filmé au taux de réduction indiqué ci-dessous.

10X	14X	18X	22X	26X	30X
<input type="checkbox"/>	<input type="checkbox"/>	<input type="checkbox"/>	<input checked="" type="checkbox"/>	<input type="checkbox"/>	<input type="checkbox"/>
12X	16X	20X	24X	28X	32X

The copy filmed here has been reproduced thanks to the generosity of:

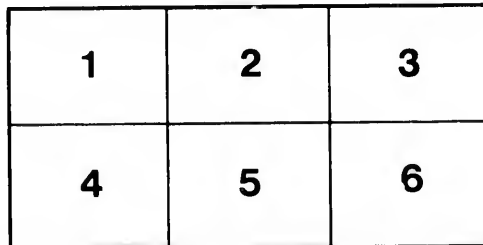
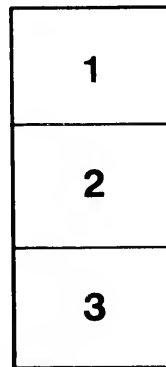
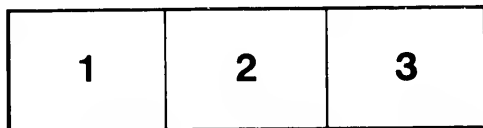
Harold Campbell Vaughan Memorial Library
Acadia University

The images appearing here are the best quality possible considering the condition and legibility of the original copy and in keeping with the filming contract specifications.

Original copies in printed paper covers are filmed beginning with the front cover and ending on the last page with a printed or illustrated impression, or the back cover when appropriate. All other original copies are filmed beginning on the first page with a printed or illustrated impression, and ending on the last page with a printed or illustrated impression.

The last recorded frame on each microfiche shall contain the symbol → (meaning "CONTINUED"), or the symbol ▼ (meaning "END"), whichever applies.

Maps, plates, charts, etc., may be filmed at different reduction ratios. Those too large to be entirely included in one exposure are filmed beginning in the upper left hand corner, left to right and top to bottom, as many frames as required. The following diagrams illustrate the method:



L'exemplaire filmé fut reproduit grâce à la générosité de:

Harold Campbell Vaughan Memorial Library
Acadia University

Les images suivantes ont été reproduites avec le plus grand soin, compte tenu de la condition et de la netteté de l'exemplaire filmé, et en conformité avec les conditions du contrat de filmage.

Les exemplaires originaux dont la couverture en papier est imprimée sont filmés en commençant par le premier plat et en terminant soit par la dernière page qui comporte une empreinte d'impression ou d'illustration, soit par le second plat, selon le cas. Tous les autres exemplaires originaux sont filmés en commençant par la première page qui comporte une empreinte d'impression ou d'illustration et en terminant par la dernière page qui comporte une telle empreinte.

Un des symboles suivants apparaîtra sur la dernière image de chaque microfiche, selon le cas: le symbole → signifie "A SUIVRE", le symbole ▼ signifie "FIN".

Les cartes, planches, tableaux, etc., peuvent être filmés à des taux de réduction différents. Lorsque le document est trop grand pour être reproduit en un seul cliché, il est filmé à partir de l'angle supérieur gauche, de gauche à droite, et de haut en bas, en prenant le nombre d'images nécessaire. Les diagrammes suivants illustrent la méthode.

~~A~~
286716
H13
A
286M
OM H13f
1881

First Baptist Church of Halifax.

SECOND PASTORAL LETTER.

PASTOR'S STUDY,
Sunday Morning, Dec. 30th, 1894.

DEARLY BELOVED:

As we enter upon another year, permit me to draw your thought to a few things which, if duly considered, will make for our individual and general prosperity:

(1) In May last you received a pastoral letter, briefly setting forth the need that Family Worship be universally observed among us. Thereby the importance of this means of grace was made to appear more distinctly to some, so that a few who had formerly been irregular in its observance were led to resolve upon greater regularity; and others, who had not been observing it at all, expressed intention to begin at once. And now again allow me to remind you of your duty and privilege in this regard. If you have failed in the good purposes previously formed, then with the New Year set about attending to what cannot be neglected or half-heartedly sustained without immense loss.

(2) Of late we have been feeling a special necessity for the strengthening of our Sunday-school. Upon its success, of course, the future of our church is in large degree dependent. There must be regular Bible study among our youth now, if they are to be actively and profitably engaged in Christian work hereafter. We therefore ask, particularly on account of its effect upon the young, that those who are older come to the Sunday-school as far as they may be able. We ask that parents seek, in fuller measure, to interest their children in the home-study of the lessons and to secure their constant attendance. Young men and young women to whom this epistle comes, who have not been giving their presence at our school, are hereby urged to join us in this invaluable service, and to do what they can besides in bringing in other young people not connected with any Bible school elsewhere. More scholars and more teachers we must have.

(3) For the year now ending a record has been taken in our church, from month to month, of the attendance at the Lord's Supper. It was evident at the year's opening that a considerable number were absenting themselves from the ordinance. For the first half of the year, upwards of fifty of the resident members were always present; thirty were absent but once; eighteen were absent twice; twenty-seven, three times; thirty-five, four times; thirty-nine, five times; while about fifty (including aged and sick

who could not come) were not at the Lord's Table at all during this period. In the last half, however, we are glad to say that there has been a very marked improvement, and we trust that in 1895 none will be living in disregard of Christ's explicit command: "This do in remembrance of Me."

(4) Your attention has recently been turned to the importance of the musical parts of our worship. There is among us a disposition to leave the singing to those gifted and trained in this particular, and not without decided injury will this be permitted to continue. By hearty congregational singing, led on by the choir, all other parts of the services are rendered more effective. Such singing, when we have it, will help draw people to our meetings, help hold them, and do much toward leading souls to Christ and toward a growing obedience to His will. "Let ALL the people praise Thee, O God, let ALL the people praise Thee."

(5) It is desirable that somewhere among our churches there should be gathered literature of historical value as touching our denomination in these Maritime Provinces, and no place seems more appropriate for this than among us. In one of the rooms of our church buildings we already have a valuable beginning in this direction. It would seem well, also, that books of more general interest be added from time to time. Our young people in the studies they are pursuing in the "Union" would be helped by having access to volumes adapted to widen their knowledge of the subjects that keep coming before them. Should any of you feel disposed, therefore, at any time, to make contributions of books, or toward a fund for their purchase, such contributions will be gladly received.

(6) The Pastor is anxious that you should cultivate the habit of giving him suitable information concerning those whose needy circumstances, whether of body or soul, you are familiar with, but of whose state he has not been in the way of learning. Make him speedily aware of cases of sickness and bereavement, of desires any have for religious conversation, of the incoming of new people who have a claim upon our regard, and of ways in which you believe persons requiring counsel or assistance may be helped by him. This is not an incitement to any to become "busy-bodies in other men's matters," but simply a plea for kindly and thoughtful impartation of knowledge which the pastor may employ for the welfare of souls. Such information may be conveyed, when more convenient, through the letter-boxes found in the entrances to auditorium and vestry.

(7) To the Week of Prayer, soon to be observed, and to our special and regular services that will follow, we solicit your faithful support. For the upbuilding of God's people and the salvation of the unsaved, things to be coveted far above all else, the means essential are ever at hand. Unitedly let us

offer prayer and put forth effort, not only that we may have the blessing of a deeper spiritual interest AWAKENED among us, but the still greater blessing of such an interest WELL-SUSTAINED the year through.

Sincerely do I thank you, dear brethren and sisters, for the numerous expressions you have given me and my family of your hearty good-will, and for the extent and manner of your co-operation in the glorious work committed to us. While sensible of at least some of the failures of my ministry, I can say that I deeply desire the highest welfare of you all. Within the year now nearly gone some of you have been in deep waters of affliction. It is my prayer that the Lord may not only uphold you, but bring to you gain out of your grief. To the aged and sick who have not been permitted to be with us in the public sanctuary, may a sufficiency of grace be ever granted. None such should cease in their retirement to beseech God that we who are able actively to go about may not misuse our powers and privileges.

Finally, I pray that to every member of this flock,—a flock truly dear unto my heart,—the days of 1895 may bring such happiness as comes alone from consciousness of unbroken fidelity in the doing of the Divine will. "The Lord lift up His countenance upon thee and give thee peace."

Your affectionate Pastor,

A. C. CHUTE.

