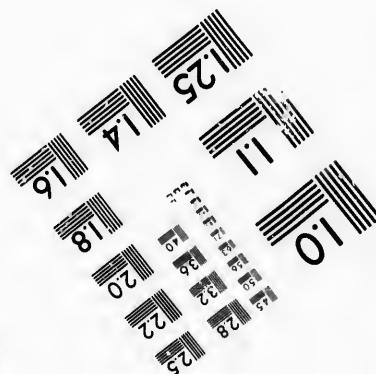
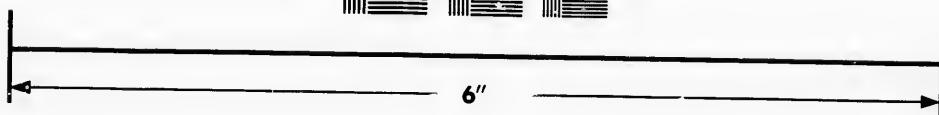
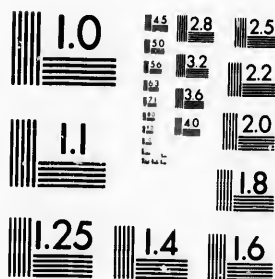


# IMAGE EVALUATION TEST TARGET (MT-3)



Photographic  
Sciences  
Corporation

23 WEST MAIN STREET  
WEBSTER, N.Y. 14580  
(716) 872-4503

**CIHM/ICMH  
Microfiche  
Series.**

**CIHM/ICMH  
Collection de  
microfiches.**



Canadian Institute for Historical Microreproductions / Institut canadien de microreproductions historiques

**© 1986**

# Technical and Bibliographic Notes/Notes techniques et bibliographiques

The Institute has attempted to obtain the best original copy available for filming. Features of this copy which may be bibliographically unique, which may alter any of the images in the reproduction, or which may significantly change the usual method of filming, are checked below.

L'Institut a microfilmé le meilleur exemplaire qu'il lui a été possible de se procurer. Les détails de cet exemplaire qui sont peut-être uniques du point de vue bibliographique, qui peuvent modifier une image reproduite, ou qui peuvent exiger une modification dans la méthode normale de filmage sont indiqués ci-dessous.

- ☐ Coloured covers/  
Couverture de couleur
- ☐ Covers damaged/  
Couverture endommagée
- ☐ Covers restored and/or laminated/  
Couverture restaurée et/ou pelliculée
- ☐ Cover title missing/  
Le titre de couverture manque
- ☐ Coloured maps/  
Cartes géographiques en couleur
- ☐ Coloured ink (i.e. other than blue or black)/  
Encre de couleur (i.e. autre que bleue ou noire)
- ☐ Coloured plates and/or illustrations/  
Planches et/ou illustrations en couleur
- ☐ Bound with other material/  
Relié avec d'autres documents
- ☐ Tight binding may cause shadows or distortion along interior margin/  
La reliure serrée peut causer de l'ombre ou de la distorsion le long de la marge intérieure
- ☐ Blank leaves added during restoration may appear within the text. Whenever possible, these have been omitted from filming/  
Il se peut que certaines pages blanches ajoutées lors d'une restauration apparaissent dans le texte, mais, lorsque cela était possible, ces pages n'ont pas été filmées.

- ☐ Coloured pages/  
Pages de couleur
- ☒ Pages damaged/  
Pages endommagées
- ☐ Pages restored and/or laminated/  
Pages restaurées et/ou pelliculées
- ☒ Pages discoloured, stained or foxed/  
Pages décolorées, tachetées ou piquées
- ☐ Pages detached/  
Pages détachées
- ☒ Showthrough/  
Transparence
- ☐ Quality of print varies/  
Qualité inégale de l'impression
- ☐ Includes supplementary material/  
Comprend du matériel supplémentaire
- ☐ Only edition available/  
Seule édition disponible
- ☐ Pages wholly or partially obscured by errata slips, tissues, etc., have been refilmed to ensure the best possible image/  
Les pages totalement ou partiellement obscurcies par un feuillet d'errata, une pelure, etc., ont été filmées à nouveau de façon à obtenir la meilleure image possible.

☒ Additional comments: [Printed ephemera] [4] p.  
Commentaires supplémentaires:

This item is filmed at the reduction ratio checked below/  
Ce document est filmé au taux de réduction indiqué ci-dessous.

10X	12X	14X	16X	18X	20X	22X	24X	26X	28X	30X	32X
								✓			

The copy filmed here has been reproduced thanks to the generosity of:

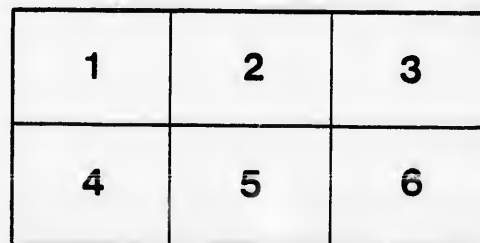
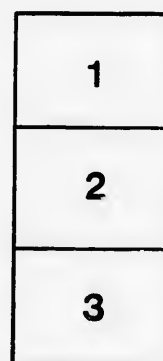
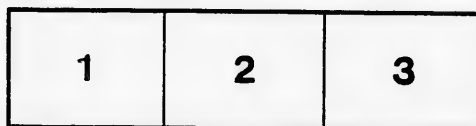
D. B. Weldon Library  
University of Western Ontario  
(Regional History Room)

The Images appearing here are the best quality possible considering the condition and legibility of the original copy and in keeping with the filming contract specifications.

Original copies in printed paper covers are filmed beginning with the front cover and ending on the last page with a printed or illustrated impression, or the back cover when appropriate. All other original copies are filmed beginning on the first page with a printed or illustrated impression, and ending on the last page with a printed or illustrated impression.

The last recorded frame on each microfiche shall contain the symbol  $\longrightarrow$  (meaning "CONTINUED"), or the symbol  $\nabla$  (meaning "END"), whichever applies.

Maps, plates, charts, etc., may be filmed at different reduction ratios. Those too large to be entirely included in one exposure are filmed beginning in the upper left hand corner, left to right and top to bottom, as many frames as required. The following diagrams illustrate the method:



L'exemplaire filmé fut reproduit grâce à la générosité de:

D. B. Weldon Library  
University of Western Ontario  
(Regional History Room)

Les Images suivantes ont été reproduites avec le plus grand soin, compte tenu de la condition et de la netteté de l'exemplaire filmé, et en conformité avec les conditions du contrat de filmage.

Les exemplaires originaux dont la couverture en papier est imprimée sont filmés en commençant par le premier plat et en terminant soit par la dernière page qui comporte une empreinte d'impression ou d'illustration, soit par le second plat, selon le cas. Tous les autres exemplaires originaux sont filmés en commençant par la première page qui comporte une empreinte d'impression ou d'illustration et en terminant par la dernière page qui comporte une telle empreinte.

Un des symboles suivants apparaîtra sur la dernière image de chaque microfiche, selon le cas: le symbole  $\longrightarrow$  signifie "A SUIVRE", le symbole  $\nabla$  signifie "FIN".

Les cartes, planches, tableaux, etc., peuvent être filmés à des taux de réduction différents. Lorsque le document est trop grand pour être reproduit en un seul cliché, il est filmé à partir de l'angle supérieur gauche, de gauche à droite, et de haut en bas, en prenant le nombre d'images nécessaire. Les diagrammes suivants illustrent la méthode.

# GRAND OPERA HOUSE

C. J. WHITNEY  
LESSEE

A. E. ROOTE  
MANAGER

## PROGRAMME

LONDON  
ONT.



### PLEASANT REFLECTIONS...

There are pleasant reflections in our big mirror when a customer who is buying our kind of made-to-measure clothing for the first time discovers that his new suit fits at the first trying on. That makes him smile. Try us and smile.

DEEKS & CO.

393 RICHMOND STREET

### OFFICE RESTAURANT

D. SARE, Proprietor

Best Wines, Liquors and Cigars

always on hand. Full course Dinner from 12 to 2

**HOT MEALS** per order, at all hours.

**OYSTERS**, in any style,  
every day of the year.

We appreciate your patronage, and always do what's right.

### BREAD

IS THE STAFF  
OF LIFE

Too much care cannot be given to the selection of PURE, WHOLESOME and CLEANLY MADE BREAD.

"EUREKA" Bread needs only a trial to convince you. Manufactured by

**PARNELL-DEAN**  
STEAM BAKING CO.

LIMITED

Telephone 929. 75 BRUCE ST.

BETWEEN THE ACTS

CALL

AT THE

**RICHMOND HOTEL**

N. E. Cor. Richmond and King Sts.

FRESH LAGER, WINES, LIQUORS and CIGARS

H. L. PEINE, New Proprietor

SEASON 1898-9



SATURDAY, OCT. 22nd, 1898

MATINEE AND NIGHT.



JOHN L. SULLIVAN'S

Big Comedy Co.

THE MUSICAL BURLETTA,

## A Trip Across The Ocean

WITH

JOHN L. SULLIVAN.

## MASON & RISCH



## PIANOS

The Instruments . . .  
. . . of the Cultured

WE ARE OFFERING SPECIAL BARGAINS AT  
PRESENT, AND SOLICIT A CALL  
AT OUR

## WAREROOMS

213 DUNDAS STREET

C. H. TESKEY

MANAGER

LONDON BRANCH

## SMITH BROS.

STEAM, GAS and  
HOT WATER  
FITTERS

## PLUMBERS

265 Dundas Street  
Telephone 538

LONDON

### THIS PROGRAMME

IS FROM THE PRESS OF

Heal & Fleming

172 KING STREET

WE SOLICIT YOUR  
PATRONAGE



TELEPHONE  
874

# THE LONDON FLORAL CO'Y

....DEALERS IN....

All Kinds of

## CUT FLOWERS

And Decorative Plants.

Theatre Parties  
a Specialty. 249 Dundas Street.

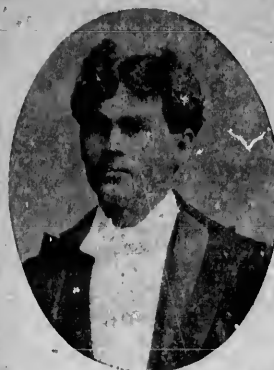
PHONE 493.

## SMOKE THE ONLY VIRGINIA 5c CIGAR SOLD

H. McKENNA, 225 DUNDAS STREET.



## You Contemplate Wedding



WHY not have the latest ideas? In catering we can save you trouble and expense. Are you giving a Bicycle Party, an At Home or Social? We offer inducements that are irresistible. Our Soda Water and Jersey Ice Cream has no equal. Our candies and Confectionery made fresh daily. If you wish dressed fowl or meats of any variety, leave your order with us, we can supply you on shortest notice. Oysters served in every style. Lunch rooms open till 12 p.m.

SPECIALTIES: Salads and Puddings, Hot and Cold Luncheon.  
SENT TO ANY PART OF THE CITY.

**SHORT BROS.**  
Phone 491 220 Dundas Street

## Stroyan's Mammoth Livery

BOARDING AND SALE STABLES

Phone  
No.  
503



Open  
Day and  
Night

## HACKS, COUPES AND LIGHT LIVERY

A. G. STROYAN, Proprietor

CALL THE USHER WHEN IN WANT OF CAB OR COUPE

Full Line of... LONDON VIEWS

## ...SOUVENIRS...

Useful Wedding and Birthday Presents

## Yeo's China Hall

177 DUNDAS STREET

China and Glass Goods for all household purposes

You are invited to call and inspect our new fall stock of Fancy China.



## CAST OF CHARACTERS.

Weary Mike.....Jas. P. Lee  
First Mate.....Ed. Begley  
Count De Luna.....Emil Petching  
Percy O'Brien.....Ed. Lowry  
Willie Lyman.....Paul Petching  
Second Mate.....Major Laird  
Jewenup.....Eli Edward  
Jewenupdown.....Gus Edward  
Miss Pansy.....Miss Francis  
Flo, from Yale.....Miss Rochefort  
Ada, from Harvard.....Miss May  
Irene, from Princeton.....Miss Bertina  
Maud, from Penn.....P. Cronch  
Clara, from Cornell.....Miss R. Ryeford  
Julia Bon Bon.....Miss Ryeford  
AND  
THE CAPTAIN.....JOHN L. SULLIVAN



Phone 897...

J. ELLIOTT HOLMES, L.D.S.

DENTIST

OFFICE: ROOM 3, DUFFIELD BLOCK,  
Cor. Dundas and Clarence Sts. LONDON.

## NOTICE

The limited space unrented in this Programme may be applied for at the Box Office. You read this, so would your advertisement be read. Keep yourself and business before the public. Theatre patrons are good customers for most business men.

## To Our Customers Examine Your Collars and Cuffs



NOTICE the absence of the former BRITLNESS which caused the work to BREAK SO RAPIDLY.

We have just put in, at great expense, a wonderful machine, heated by steam, work only passing through the rollers once, the result—work is elastic, will not break, and will last much longer than when ironed by the old method, heated by gas, which has to pass through the rollers eight times. Degrees of heat of gas machine, 600 degrees of heat of steam machine, 400 P.S. —We have also added a newly invented Machine to iron the edges of Collars and Cuffs.

## Parisian Steam Laundry Co.

OF ONTARIO, LIMITED  
LONDON, TORONTO, HAMILTON.

## FAIRBAIRN

Opposite City Hall  
UP-STAIRS

The Tailor

If you have your own cloth, bring it to me and I will make it up in the best possible style at a reasonable cost.

## Fall Suits and Overcoats

Prices sure to suit you as well as fit.  
A CALL SOLICITED.

FAIRBAIRN, The Tailor

Opposite City Hall Richmond Street.

'Tis almost second nature for an actor to relate stories, even of a funeral nature, in as entertaining a manner as possible.

Mr. Goodwin is accredited with talking about it the other day.

"For instance," said he, "what's the use of going into all the harrowing details. Leave something to the imagination. Now, take for example, suppose you read something like this in the paper:

"To Boston the other day, a man thought he could cross the track in advance of a locomotive. The services at the grave were very impressive." Or

"A man in Maryland ate fifty raw oysters on a wager. The silver trimmings on his coffin cost \$12.50." Or

"A Chicago man warned his wife not to light the fire with kerosene. She did not heed the warning. Her clothes fit his second wife admirably well." Or

"A Londoner got tired of buying his coal haphazard, because it was cheap, and now buys it from Cameron. As a result the doctor never calls, and he and his family are happy all the time." 'Tis brief, but really all-sufficient. Office, Hiscor Building Yard, Burwell Street, at G. T. R.



# THE TECUMSEH

LONDON, ONT.



FIRST-CLASS  
IN ALL  
APPOINTMENTS.

SPECIAL RATES  
FOR COMPANIES

CHAS. W. DAVIS,  
Proprietor

## F. H. BUTLER Stock Broker

STOCKS, GRAINS AND PROVISIONS  
bought and sold for cash or on margin.  
Private wires to New York Stock Ex-  
change and Chicago Board of Trade. Toronto  
and Montreal Stock Exchange quotations  
received by wire.

LONG DISTANCE TELEPHONE 1278

15-16 Masonic Temple, London

GOING ...THE...  
ADVERTISER  
SIGNS, BANNERS  
and WALL WORK 578  
RICHMOND ST

E. J. PEARCE  
Successor to E. J. BURKE  
521 RICHMOND STREET

FULL LINE  
Amateur  
Supplies  
ALWAYS  
IN STOCK



A Man Wants to See You  
BETWEEN ACTS, AT



JERRY McDONALD'S  
13 KING STREET

## DAYTON & McCORMICK NEW PALACE ...Dancing Academy

422 RICHMOND STREET  
(Over Canadian Loan and Savings Bank)

Next week—Beginners' Classes. Gentlemen, Monday  
evening; Ladies, Tuesday evening, 8 o'clock sharp.  
The recognized leading academy of Western Canada.

ELECTRIC LIGHTS, ELECTRIC FANS

AND EVERYTHING NEW AND UP-TO-DATE.

Academy open every evening for application of pupils.  
Call early, as classes will be limited to number

DAYTON & McCORMICK



OLIO.

Gus—EDWARDS & EDWARDS—Eli  
Illustrated Songs,

Lou—ROCHFORD & MAY—Ada.  
Up-to-Date Songs, Parodies and Funny Sayings.

Emil—PETCHING BROS—Paul  
Comedy Musical act.

Millie—BERTINA & CROUCH—Rosa  
Acrobatic and Canortion Dances.

Two Thoroughbreds,  
Ed.—BEGLEY & LEE—Jas.

In their own Original Talking Acts. "MULDOON THE FIDDLER."

Edw.—LOWRY & FRANCIS—Bertha  
In a Three-round Sparring Contest, admitted to be the most spirited  
exhibition ever given by a lady and gentleman, also the latest  
illustrated novelty pictures of famous fighters of past and  
present presented with electrical effects.

RYEFORD SISTERS,  
The Up-to-Date Girls.

The World's Greatest Club Swinger, the Great  
DARMODY,

A standing Challenge of \$1,000 for his equal.

Performance to Conclude with  
SCENES IN A GYMNASIUM

—BY—  
JOHN L. SULLIVAN  
And His Sparring Partner,  
JAKE KILRAIN.

EXECUTIVE STAFF FOR JOHN L. SULLIVAN CO.

W. H. Sherwood ..... Sole Proprietor and Manager  
Harry N. Farren ..... Business Representative  
Major Laird ..... Stage Manager—A. Hinchcliffe ..... Musical Director  
John Phillip ..... Master of Transportation

## The Famous Bell Orchestral Piano

IS USED EXCLUSIVELY IN THIS THEATRE.



## SHEA'S, THE PLACE FOR THE BEST!

SHEA is sole agent in London for the Old  
Mull Blend of Scotch Whisky that won the  
highest awards at the Chicago Fair.

SHEA always has the best, and the best is  
Walker's 7-year-old Imperial. It's in wood  
and maturing to still ripper flavor every day.

Have you ever tried the flavor of Shea's  
Holland Gin? Every fine quality that  
Holland Gin should have is there—\$1.00 a  
quart bottle.

A Fine Old Port—\$1.00 a gallon.  
Order by mail, Rear door from market.

ED. SHEA MAKES A SPECIALTY OF  
FAMILY SUPPLIES.  
NO. 1 MASONIC TEMPLE.

## LONDON STEAM LAUNDRY

284 Dundas Street

FIRST-CLASS WORK MODERATE RATES

Family Washing <sup>ROUGH</sup>DAIRIED 5c per lb.

## Theatrical Troupes

PROMPTLY WAITED UPON

Prompt work. Satisfaction guaranteed.

TELEPHONE 1266  
OUR WAGON WILL CALL

G. M. RYCKMAN, Proprietor

## SLATER BROS. TAILORS

399 Richmond St. Telephone 844

## FINE IMPORTED WOOLENS

A SPECIALTY

LARGEST STOCK IN THE CITY ORDERS FINISHED PROMPTLY

## TECUMSEH IS MY NEW 50 CIGAR

JOE NOLAN, RICHMOND STREET  
Round the Corner.

FALL weather is with us again  
and along with Fall comes  
COLDS ❄️❄️❄️

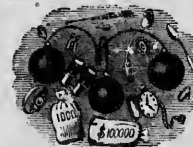
To know a cure for the same is very important.  
.... By calling upon....

## P. J. WATT

you can secure an infallible remedy.  
No well-regulated household should be without it.  
TRADING STAMPS.

428 RICHMOND STREET, Next News Office

ESTABLISHED 1880.



T. FOX  
THE ORIGINAL PAWNBROKER  
LEND MONEY

On DIAMONDS, WATCHES, JEWELRY and WEARING  
APPAREL, Etc. All business strictly private  
and confidential.  
383 AND 385 CLARENCE ST.

P.S.—Unredeemed Watches, Diamond Rings,  
Guns, Revolvers, and Musical Goods on hand.  
Theatrical Costumes for sale or hire.

# Cole's Cut=Rate Store

FOR ENORMOUS BARGAINS IN

## GENERAL DRY GOODS

NOTED BARGAIN HOUSE.

 202 DUNDAS STREET, LONDON

Follow the crowds and save money. All new goods at Cole's, all at cut prices. Thirty cases just arrived within the past few days.

200 Boys' and Men's Caps, worth from 25c to \$1.00, for 25c.

178 Ladies' Felt Hats, New Shapes, going at 50c.

Special Sale in Ladies' and Gents' Underwear, Hosiery and Gloves.

Whatever you want in Dry Goods be sure and call at Cole's before you buy.  
Money saved is money made—Spend your hard-earned dollars at the place where you will get the most for your money, and the place is

## COLE'S CUT-RATE STORE

202 Dundas Street, London.

### NEXT ATTRACTION!

TUESDAY, OCT. 25

....

## J. H. HAVERLY'S

AMERICAN-EUROPEAN

## MINSTRELS

40-COUNT 'EM-40

— AND —

### THE NICHOLS SISTERS

#### PRICES

First two rows Circle, \$1.00; balance  
Lower Floor, 75c; Balcony, 50c; Gallery, 25c.  
Seats now on sale.

Office open from 9 a. m. to 9 p. m.  
Doors open for matinees at 2. p.m.;  
curtains rises 2.30 p. m.

Evenings.—Doors open at 7.30; and  
curtains rises at 8.15 p. m. sharp.

Tickets can be reserved two days in  
advance without extra charge.

Seats can be secured by mail, tele-  
phone or telegraph. Telephone 732.

Carriages can be ordered at the Box  
Office or of the chief usher.

For all lost articles, apply at the  
Box Office.

Physicians are requested to register  
at the Box Office, leaving seat number,  
as this will enable Ushers to find them,  
if called for, without disturbing the  
audience.

If the individual members of an  
audience would stop to think for just  
an instant, they would undoubtedly  
appreciate the fact that the habit of  
rising from their seat and leaving the  
theatre before the curtain falls, is a  
most annoying one, and one that  
should be stopped. We therefore beg  
our audiences to kindly remain in their  
seats until the close of the perform-  
ance.



