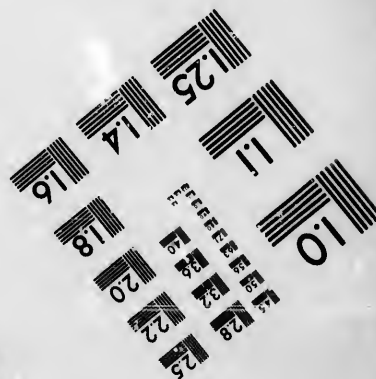
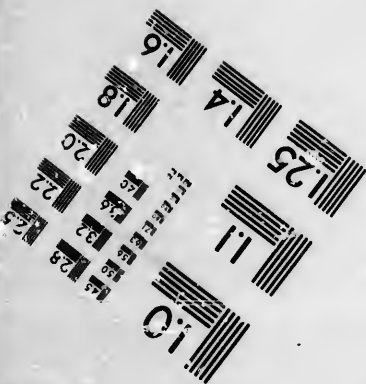
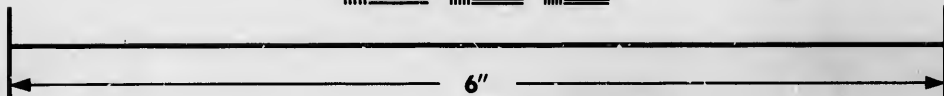
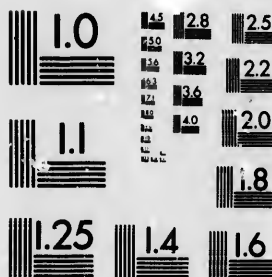


**IMAGE EVALUATION
TEST TARGET (MT-3)**



**Photographic
Sciences
Corporation**

23 WEST MAIN STREET
WEBSTER, N.Y. 14580
(716) 872 4503

25
24
23
22
21
20
19
18

**CIHM/ICMH
Microfiche
Series.**

**CIHM/ICMH
Collection de
microfiches.**



Canadian Institute for Historical Microreproductions / Institut canadien de microreproductions historiques

11
10
9

© 1985

Technical and Bibliographic Notes/Notes techniques et bibliographiques

The Institute has attempted to obtain the best original copy available for filming. Features of this copy which may be bibliographically unique, which may alter any of the images in the reproduction, or which may significantly change the usual method of filming, are checked below.

L'Institut a microfilmé le meilleur exemplaire qu'il lui a été possible de se procurer. Les détails de cet exemplaire qui sont peut-être uniques du point de vue bibliographique, qui peuvent modifier une image reproduite, ou qui peuvent exiger une modification dans la méthode normale de filmage sont indiqués ci-dessous.

- | | |
|--|--|
| <input type="checkbox"/> Coloured covers/
Couverture de couleur | <input type="checkbox"/> Coloured pages/
Pages de couleur |
| <input type="checkbox"/> Covers damaged/
Couverture endommagée | <input type="checkbox"/> Pages damaged/
Pages endommagées |
| <input type="checkbox"/> Covers restored and/or laminated/
Couverture restaurée et/ou pelliculée | <input type="checkbox"/> Pages restored and/or laminated/
Pages restaurées et/ou pelliculées |
| <input type="checkbox"/> Cover title missing/
Le titre de couverture manque | <input type="checkbox"/> Pages discoloured, stained or foxed/
Pages décolorées, tachetées ou piquées |
| <input type="checkbox"/> Coloured maps/
Cartes géographiques en couleur | <input type="checkbox"/> Pages detached/
Pages détachées |
| <input type="checkbox"/> Coloured ink (i.e. other than blue or black)/
Encre de couleur (i.e. autre que bleue ou noire) | <input type="checkbox"/> Showthrough/
Transparence |
| <input type="checkbox"/> Coloured plates and/or illustrations/
Planches et/ou illustrations en couleur | <input type="checkbox"/> Quality of print varies/
Qualité inégale de l'impression |
| <input type="checkbox"/> Bound with other material/
Relié avec d'autres documents | <input type="checkbox"/> Includes supplementary material/
Comprend du matériel supplémentaire |
| <input type="checkbox"/> Tight binding may cause shadows or distortion
along interior margin/
La reliure serrée peut causer de l'ombre ou de la
distorsion le long de la marge intérieure | <input type="checkbox"/> Only edition available/
Seule édition disponible |
| <input type="checkbox"/> Blank leaves added during restoration may
appear within the text. Whenever possible, these
have been omitted from filming/
Il se peut que certaines pages blanches ajoutées
lors d'une restauration apparaissent dans le texte,
mais, lorsque cela était possible, ces pages n'ont
pas été filmées. | <input type="checkbox"/> Pages wholly or partially obscured by errata
slips, tissues, etc., have been refilmed to
ensure the best possible image/
Les pages totalement ou partiellement
obscurcies par un feuillet d'errata, une pelure,
etc., ont été filmées à nouveau de façon à
obtenir la meilleure image possible. |
| <input checked="" type="checkbox"/> Additional comments: /
Commentaires supplémentaires: | [Printed ephemera] [3] p. This copy is a photoreproduction. |

This item is filmed at the reduction ratio checked below/
Ce document est filmé au taux de réduction indiqué ci-dessous.

10X	12X	14X	16X	18X	20X	22X	24X	26X	28X	30X	32X
						/					

The copy filmed here has been reproduced thanks to the generosity of:

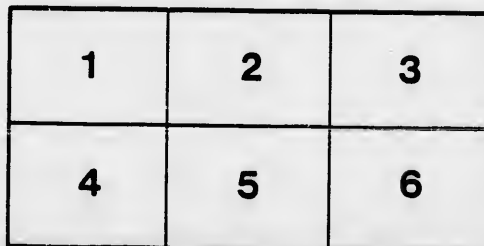
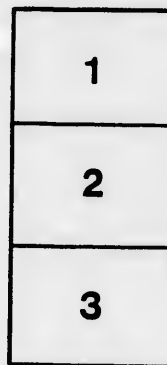
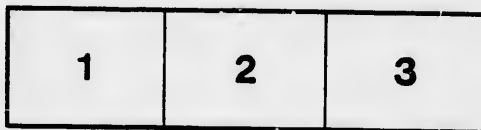
D. B. Weldon Library
University of Western Ontario
(Regional History Room)

The images appearing here are the best quality possible considering the condition and legibility of the original copy and in keeping with the filming contract specifications.

Original copies in printed paper covers are filmed beginning with the front cover and ending on the last page with a printed or illustrated impression, or the back cover when appropriate. All other original copies are filmed beginning on the first page with a printed or illustrated impression, and ending on the last page with a printed or illustrated impression.

The last recorded frame on each microfiche shall contain the symbol \rightarrow (meaning "CONTINUED"), or the symbol ∇ (meaning "END"), whichever applies.

Maps, plates, charts, etc., may be filmed at different reduction ratios. Those too large to be entirely included in one exposure are filmed beginning in the upper left hand corner, left to right and top to bottom, as many frames as required. The following diagrams illustrate the method:



L'exemplaire filmé fut reproduit grâce à la générosité de:

D. B. Weldon Library
University of Western Ontario
(Regional History Room)

Les images suivantes ont été reproduites avec le plus grand soin, compte tenu de la condition et de la netteté de l'exemplaire filmé, et en conformité avec les conditions du contrat de filmage.

Les exemplaires originaux dont la couverture en papier est imprimée sont filmés en commençant par la première page et en terminant soit par la dernière page qui comporte une empreinte d'impression ou d'illustration, soit par le second plat, selon le cas. Tous les autres exemplaires originaux sont filmés en commençant par la première page qui comporte une empreinte d'impression ou d'illustration et en terminant par la dernière page qui comporte une telle empreinte.

Un des symboles suivants apparaîtra sur la dernière image de chaque microfiche, selon le cas: le symbole \rightarrow signifie "A SUIVRE", le symbole ∇ signifie "FIN".

Les cartes, planches, tableaux, etc., peuvent être filmés à des taux de réduction différents. Lorsque le document est trop grand pour être reproduit en un seul cliché, il est filmé à partir de l'angle supérieur gauche, de gauche à droite, et de haut en bas, en prenant le nombre d'images nécessaire. Les diagrammes suivants illustrent la méthode.

ire
détails
es du
ro modifier
er une
filmage

es

errata
to

pelure,
n à

32X

TO THE PUBLIC OF CANADA.

The Committee of the Montreal District Industrial Fair, beg to call the attention of the Public, to a project that has already been brought under their notice of holding a Grand District Industrial Fair in the City of Montreal, in September or October next, in connexion with the Inter-national Exhibition, to be held in London, in 1851.

The intention of the Committee is to give the public an opportunity of presenting for Exhibition, specimens of the natural and manufactured articles of Agriculture, Commerce, Art, Scientific ingenuity and skill, and generally of every species of production that will represent the industry and resources of this country. From these, competent and approved judges will select such as may be deemed worthy of transmission to the Great Industrial Exhibition, in London in 1851.

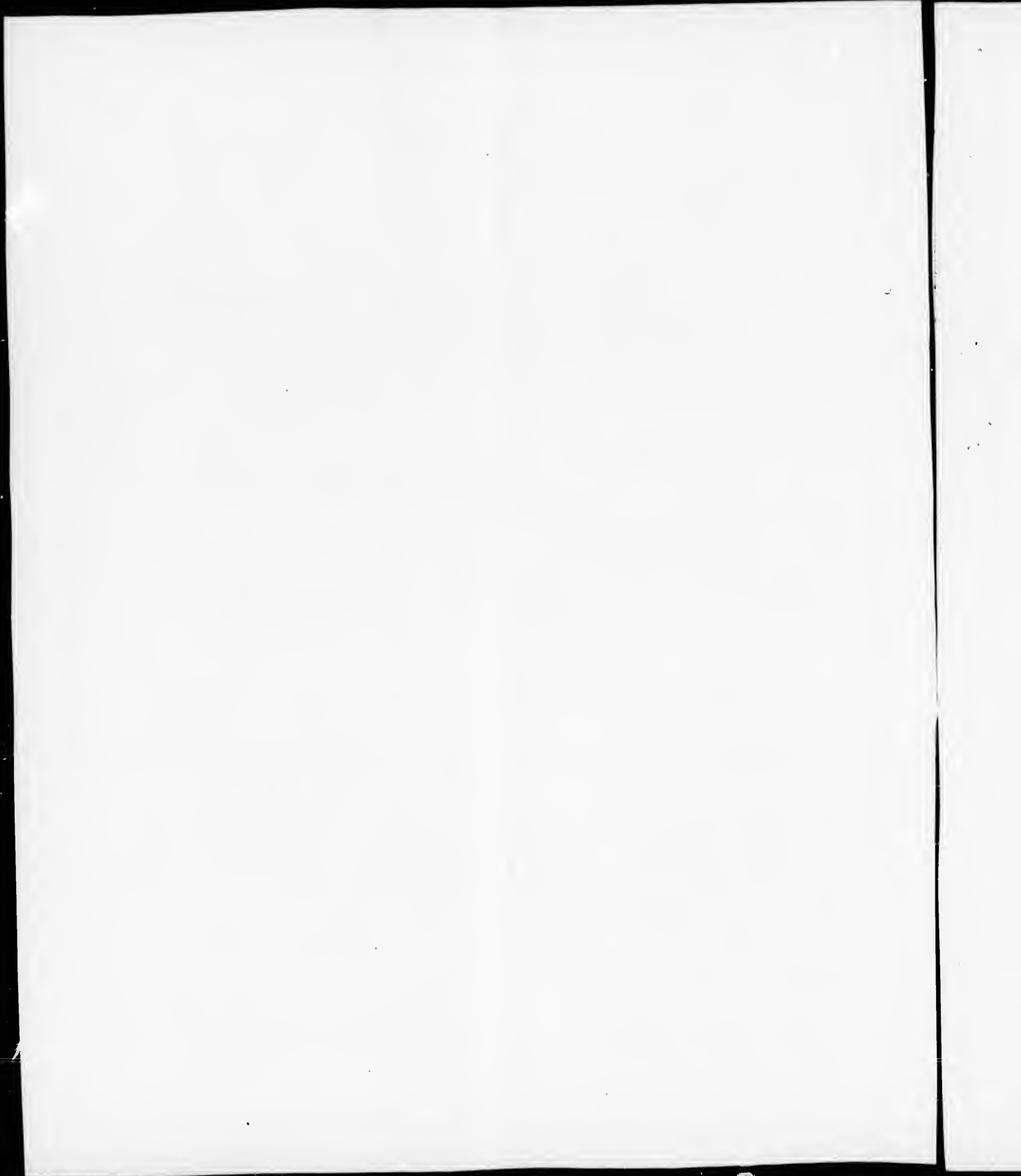
In preparing specimens for the Exhibition, the Committee suggest that preference should be given to those that this Province can produce *advantageously*, and to improvements of a practical nature, which may, by becoming better known, be of value to the producer, and open up new sources of commerce, industry, and wealth, to the country at large.

It is of importance, that every article sent in for Exhibition, should have attached to it the price at which it may be sold, and to the specimens of Minerals, Earth, Ores, &c.,---the natural production of the country, and the raw materials of manufactures,---where they are produced. the distance from navigable water, the cost of procuring and transmission, and such other information as may regulate their value.

The Committee will place no restriction on articles offered for exhibition, that have been produced out of Canada, but they do not intend to give any premiums for such. They will, however, grant diplomas for the best specimens of every species of industry from whatever quarter they may be sent. It will be obvious that many of the articles offered for exhibition, may not be selected for transmission to England, but the Committee desire especially to impress upon the public the immense advantage that must accrue from a fair representation *among ourselves*, of the national resources of Canada, and the productions of her skill, ingenuity and industry. The action of the Committee has necessarily been limited from the want of knowledge of what pecuniary means would be placed at their disposal, and the shortness of the time during which this undertaking will have to be completed, renders it imperative on the Committee to make an earnest appeal to their fellow subjects, in the different sections of the Province, to enable them to know as soon as possible, on what amount of support they may ultimately rely. The scale upon which this important undertaking will be conducted must depend entirely on the amount of pecuniary support which it shall receive from the public.

The Committee with confidence invite the co-operation of all classes of the community, to enable them to make such liberal arrangements as will ensure the success of the undertaking in a manner worthy of the character and position of this Province, and of the invitation which we have received to compete with the other nations of the world, in a spirit of generous and friendly emulation. The Committee, therefore, trust that this opportunity of placing many of the comparatively unknown resources of this Province before the notice of the British Public, and of the world at large, will not be neglected, but that in every District of Canada individuals and Local Committees will spare no exertion to procure and forward to Montreal the various articles, that come within the list of those admitted for competition, and in the production of which their Localities particularly excel. For the purpose of forwarding the undertaking, the Committee invite immediate communication from all who take an interest in it, to whom they will furnish any information they may require on the subject, and all the encouragement and assistance in their power.

The Committee would particularly invite the co-operation of the Agriculturists, Mechanics, and Manufacturers of Canada, considering that the success of this important and patriotic undertaking, depends very much on the zeal and earnestness, with which *they* take up the subject, and the efforts they are willing to make in its behalf. As an inducement to competition, and from a desire to enable all to take a part in the Exhibition---the Committee intend offering *premiums* of different amounts for the best specimens of the following and other articles :



AGRICULTURAL PRODUCTS.

Fall and Spring Wheat, Oats, Rye, Barley, Corn, Buck Wheat, Pease, Beans, Flax and Hemp in fibre and seed, Hops, Tobacco, Balsams and Gums, Tanning Materials and Dye Stuffs, Medicinal Substances, Intoxicating Drugs, Butter, Cheese, Beef, Bacon, Lard, Salted Fish, and Wool.

HORTICULTURAL PRODUCTS.

Vegetables, Fruits, Flowers, and Seeds.

WOODS OF CANADA.

Largest and Finest Specimens of various descriptions suitable for Export, or Manufactures, in Planks, not exceeding 6 feet in length.

MANUFACTURES.

Flour, Starch, Sugar, Syrup, Leather, Cordage, Glass, Porcelain and Pottery, Bricks and Tiles, Artificial Stones and Cements, Oils, Soap, Candles, Woollen, Cotton, and Linnen, Straw, Basket, Bark and Indian Work, Mats, Brooms, and Brushes, Cabinet Work and Wooden Wares, Turnery, Saddlery, Boots and Shoes, Trunks, Book-Binding, Type, Artificial Flowers, Sleighs, Carriages, Cooper's Work, Models of Steam and Fire Engines, Iron, Machinery and Tools, Black and White Smith's Work, Cutlery and Jewelry, Silver Ware, Agricultural Implements, Glue and Bees Wax, Picture Frames and Gilding, Dentistry, Mathematical and Surgical Instruments.

MINERALS.

Ores of Iron, Lead, Copper, Silver, Gold, Nickel, Uranium, Chromium, Manganese, Barytes, Ochres, Soapstone, Asbestos, Materials for Glass-making, Dolomite, Magnesite, Strontian, Phosphate of Lime, Shell Marl, Gypsum, Canadian Tripoli, Whetstones, Mill-stones, Granite, Building Stones, of various kinds, Marbles, Lime Stones, Water Lime, Slates, Flag Stones, Lithographic Stones, Black Lead, Agates, Jasper, Labradorite, Hyacinth, Peat, Petroleum, Asphalt, Jet, Moulding Sand, Clay for Bricks and Pottery.*

FINE ARTS.

Sculpture, Painting, Drawing, Carving, &c., Lithographic, Printing, Typography, Ornamental Stucco Work.

ANIMAL KINGDOM.

Cod, Liver, Seal and Whale Oils, Fish, Furs and Skins, Castoreum, Moose and other Horns, Preserved Birds, Skins, Insects and Bones.

Indian Antiquities and matters relating to the Early History of this Country.

It is particularly requisite that all articles admitted for competition should exhibit one or more of the following qualifications :---Increased Usefulness, Improved Form and Arrangement in Articles of Utility, Superior Skill in Workmanship, New Use of known Materials, Use of New Materials or New Combinations of Materials.

Beauty of Design in form and color, or both with reference to utility.

Cheapness relatively to Excellence of Production. The object or article must be *bona fide*, produced or manufactured in Canada, and as far as possible of Materials the produce of Canada.

The above General List of Articles has been made with a view of giving an idea of the character of the Exhibition. The amount and distribution of the prizes will be published hereafter. The Committee trust that the means to be placed at their disposal, will enable them to give premiums for the above enumerated articles, and such others as may tend to carry out the objects of the exhibition.

Parties who are desirous of contributing to the funds of Association, will please remit to David Davidson, Esq., British North American Bank.---Treasurer to the Association.

All communications to be post-paid to the Secretary of the Association, Office No. 22, Great St. James Street.

JOHN LEEMING, *Secretary.*

* The Committee will shortly publish a list of the localities, where the above Minerals may be found, furnished by W. E. Logan, Esq., Provincial Geologist.

