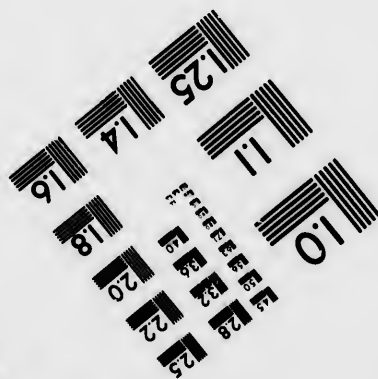
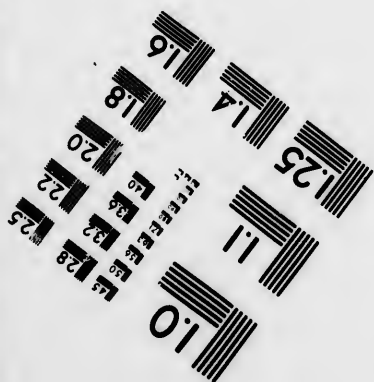
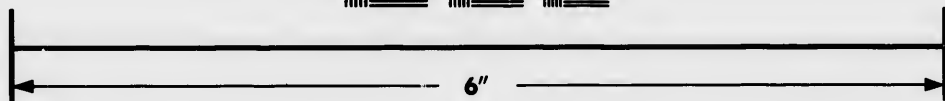
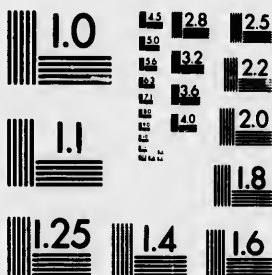


**IMAGE EVALUATION
TEST TARGET (MT-3)**



**Photographic
Sciences
Corporation**

23 WEST MAIN STREET
WEBSTER, N.Y. 14580
(716) 872-4503

1.5 2.8
2.0 2.5
3.2 3.6
4.0 4.5
5.0 5.6
6.3 7.1
8.0 9.0

**CIHM/ICMH
Microfiche
Series.**

**CIHM/ICMH
Collection de
microfiches.**



Canadian Institute for Historical Microreproductions / Institut canadien de microreproductions historiques

10

© 1982

The copy filmed here has been reproduced thanks to the generosity of:

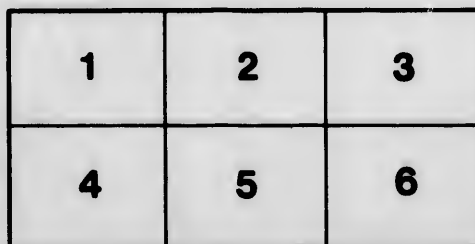
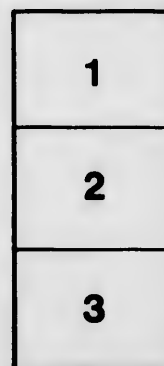
University of British Columbia Library

The images appearing here are the best quality possible considering the condition and legibility of the original copy and in keeping with the filming contract specifications.

Original copies in printed paper covers are filmed beginning with the front cover and ending on the last page with a printed or illustrated impression, or the back cover when appropriate. All other original copies are filmed beginning on the first page with a printed or illustrated impression, and ending on the last page with a printed or illustrated impression.

The last recorded frame on each microfiche shall contain the symbol \rightarrow (meaning "CONTINUED"), or the symbol ∇ (meaning "END"), whichever applies.

Maps, plates, charts, etc., may be filmed at different reduction ratios. Those too large to be entirely included in one exposure are filmed beginning in the upper left hand corner, left to right and top to bottom, as many frames as required. The following diagrams illustrate the method:



L'exemplaire filmé fut reproduit grâce à la générosité de:

University of British Columbia Library

Les images suivantes ont été reproduites avec le plus grand soin, compte tenu de la condition et de la netteté de l'exemplaire filmé, et en conformité avec les conditions du contrat de filmage.

Les exemplaires originaux dont la couverture en papier est imprimée sont filmés en commençant par le premier plat et en terminant soit par la dernière page qui comporte une empreinte d'impression ou d'illustration, soit par le second plat, selon le cas. Tous les autres exemplaires originaux sont filmés en commençant par la première page qui comporte une empreinte d'impression ou d'illustration et en terminant par la dernière page qui comporte une telle empreinte.

Un des symboles suivants apparaîtra sur la dernière image de chaque microfiche, selon le cas: le symbole \rightarrow signifie "A SUIVRE", le symbole ∇ signifie "FIN".

Les cartes, planches, tableaux, etc., peuvent être filmés à des taux de réduction différents. Lorsque le document est trop grand pour être reproduit en un seul cliché, il est filmé à partir de l'angle supérieur gauche, de gauche à droite, et de haut en bas, en prenant le nombre d'images nécessaire. Les diagrammes suivants illustrent la méthode.

ails
du
modifier
une
page

rrata
co

pelure,
n à

32X

McGill University Athletic Sports.

1873.



1873

Friday, 31st October,

COLLEGE GROUNDS.

Patrons

HIS EXCELLENCY THE EARL OF DUFFERIN, GOV. GENERAL, AND
THE HON. C. BEWEY, B.A., LL.D., DEPUTY GOVERNOR,
AND THE
GOVERNORS, PRINCIPAL, AND PROFESSORS
OF THE UNIVERSITY.

Judges,

G. F. ARMSTRONG, M.A., C.L., LL.D.,
R. CRAIK, M.D.,
C. P. DAVIDSON, M.A., B.C.L.

Starter, C. H. McFOD, B.A. Sc. Time-keeper, J. SMYTHE HALL

AFTER THE COMPETITION THE PRIZES WILL BE PRESENTED IN THE WILLIAM MCDONNELL HALL

The Band of the G. T. B., Brigade, will perform during the afternoon

PROGRAMME.

WELLS, N.S.W.

Commencing on 17th Oct.

1. Race, Two miles, open to all competitors. Medal.
2. Broad Jump, open to all competitors. Medal.
3. Throwing Hammer, 16 lbs. open to all competitors. Medal.
4. Running Hop, Step & Jump, open to all competitors. Medal.
5. Putting Weight, 9 lb. Discus, 1 lb. open to all competitors. Medal.
6. Running High Jump, open to all competitors. Medal.
7. Throwing Cricket Ball, *as arranged by F. C. C. C.* Medal.

CONDITIONS.

1. Nos. 4 and 8, in afternoon programme open to non-professional runners.
2. All other events, open to students of recognized Universities.
3. Entries must be made before 10 a.m. Wednesday 20th Oct. to any member of the Committee.
4. Decision of Judges in all cases to be final.
5. The Committee to be Judges of eligibility of all competitors.

PROGRAMME

1907-1908

1907-1908

- 2.30 1. College Meet Medal
Presented by W. C. W. Donald Esq.
1. 2. 100 Yards Medal
Presented by the Organiser
1. 3. Half mile Medal
Presented by the Organiser
1. 4. Three-legged Race Medal
Presented by the Organiser
1. 5. Steeple Chase Lucky
Presented by the Organiser
- 3.1 6. Relay (The Four Ball) Medal
Presented by the M. A. B. C.
- 4.00 7. 1000 Yards for Champion of the University Cup
Presented by the Organiser
- 4.15 8. One Mile Handicap Medal
- 4.30 9. Hurdle Race (220 yds. 6 hurdles) Medal
Presented by the Organiser
10. Obstacle mile (Hares) Medal
11. Half mile open to Members of University Roll
 (Clubs in uniform) Dessing class
Presented by the M. A. B. C.

202
102
10
10

COMMITTEE OF MANAGEMENT.

President

J. D. CLINE, B. A., Pres. U. P. B. C.

Secretary,

J. S. McLENNAN

Treasurer

S. C. STEVENSON.

C. R. JONES.

J. B. ABBOTT

WILLIAM MOLSON

CHARA BAYNES

DAV. RODGER, Jr., Pres. U. C. C.

