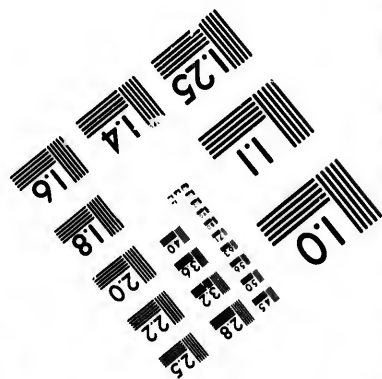
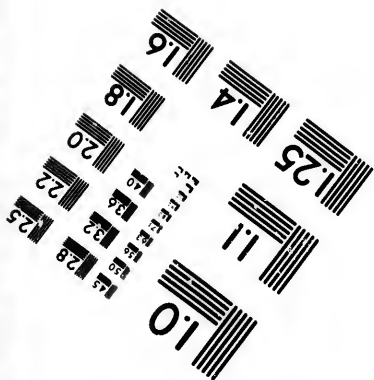
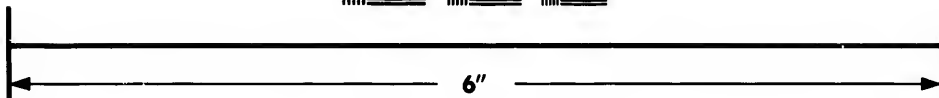
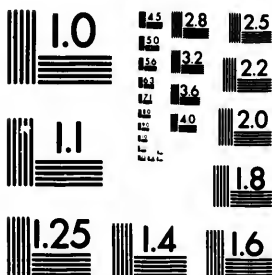


**IMAGE EVALUATION
TEST TARGET (MT-3)**



**Photographic
Sciences
Corporation**

23 WEST MAIN STREET
WEBSTER, N.Y. 14580
(716) 872-4503



**CIHM/ICMH
Microfiche
Series.**

**CIHM/ICMH
Collection de
microfiches.**



Canadian Institute for Historical Microreproductions / Institut canadien de microreproductions historiques

© 1987



Technical and Bibliographic Notes/Notes techniques et bibliographiques

The Institute has attempted to obtain the best original copy available for filming. Features of this copy which may be bibliographically unique, which may alter any of the images in the reproduction, or which may significantly change the usual method of filming, are checked below.

L'Institut a microfilmé le meilleur exemplaire qu'il lui a été possible de se procurer. Les détails de cet exemplaire qui sont peut-être uniques du point de vue bibliographique, qui peuvent modifier une image reproduite, ou qui peuvent exiger une modification dans la méthode normale de filmage sont indiqués ci-dessous.

- Coloured covers/
Couverture de couleur
- Covers damaged/
Couverture endommagée
- Covers restored and/or laminated/
Couverture restaurée et/ou pelliculée
- Cover title missing/
Le titre de couverture manque
- Coloured maps/
Cartes géographiques en couleur
- Coloured ink (i.e. other than blue or black)/
Encre de couleur (i.e. autre que bleue ou noire)
- Coloured plates and/or illustrations/
Planches et/ou illustrations en couleur
- Bound with other material/
Relié avec d'autres documents
- Tight binding may cause shadows or distortion along interior margin/
La reliure serrée peut causer de l'ombre ou de la distorsion le long de la marge intérieure
- Blank leaves added during restoration may appear within the text. Whenever possible, these have been omitted from filming/
Il se peut que certaines pages blanches ajoutées lors d'une restauration apparaissent dans le texte, mais, lorsque cela était possible, ces pages n'ont pas été filmées.
- Additional comments:/
Commentaires supplémentaires:

- Coloured pages/
Pages de couleur
- Pages damaged/
Pages endommagées
- Pages restored and/or laminated/
Pages restaurées et/ou pelliculées
- Pages discoloured, stained or foxed/
Pages décolorées, tachetées ou piquées
- Pages detached/
Pages détachées
- Showthrough/
Transparence
- Quality of print varies/
Qualité inégale de l'impression
- Includes supplementary material/
Comprend du matériel supplémentaire
- Only edition available/
Seule édition disponible
- Pages wholly or partially obscured by errata slips, tissues, etc., have been refilmed to ensure the best possible image/
Les pages totalement ou partiellement obscurcies par un feuillet d'errata, une pelure, etc., ont été filmées à nouveau de façon à obtenir la meilleure image possible.

This item is filmed at the reduction ratio checked below/
Ce document est filmé au taux de réduction indiqué ci-dessous.

10X	12X	14X	16X	18X	20X	22X	24X	26X	28X	30X	32X
					✓						

The copy filmed here has been reproduced thanks to the generosity of:

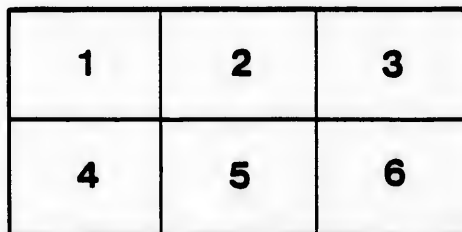
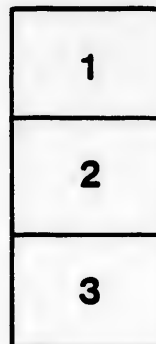
Library of Parliament and the
National Library of Canada.

The images appearing here are the best quality possible considering the condition and legibility of the original copy and in keeping with the filming contract specifications.

Original copies in printed paper covers are filmed beginning with the front cover and ending on the last page with a printed or illustrated impression, or the back cover when appropriate. All other original copies are filmed beginning on the first page with a printed or illustrated impression, and ending on the last page with a printed or illustrated impression.

The last recorded frame on each microfiche shall contain the symbol \rightarrow (meaning "CONTINUED"), or the symbol ∇ (meaning "END"), whichever applies.

Maps, plates, charts, etc., may be filmed at different reduction ratios. Those too large to be entirely included in one exposure are filmed beginning in the upper left hand corner, left to right and top to bottom, as many frames as required. The following diagrams illustrate the method:



L'exemplaire filmé fut reproduit grâce à la générosité de:

Le Bibliothèque du Parlement et la
Bibliothèque nationale du Canada.

Les images suivantes ont été reproduites avec le plus grand soin, compte tenu de la condition et de la netteté de l'exemplaire filmé, et en conformité avec les conditions du contrat de filmage.

Les exemplaires originaux dont la couverture en papier est imprimée sont filmés en commençant par le premier plat et en terminant soit par la dernière page qui comporte une empreinte d'impression ou d'illustration, soit par le second plat, selon le cas. Tous les autres exemplaires originaux sont filmés en commençant par la première page qui comporte une empreinte d'impression ou d'illustration et en terminant par la dernière page qui comporte une telle empreinte.

Un des symboles suivants apparaîtra sur la dernière image de chaque microfiche, selon le cas: le symbole \rightarrow signifie "A SUIVRE", le symbole ∇ signifie "FIN".

Les cartes, planches, tableaux, etc., peuvent être filmés à des taux de réduction différents. Lorsque le document est trop grand pour être reproduit en un seul cliché, il est filmé à partir de l'angle supérieur gauche, de gauche à droite, et de haut en bas, en prenant le nombre d'images nécessaires. Les diagrammes suivants illustrent la méthode.

rrata
o

belure,
n à

Winter Navigation of River St. Lawrence.

2

COPY OF LOG

— OF —

STEAMER "FOLGER."

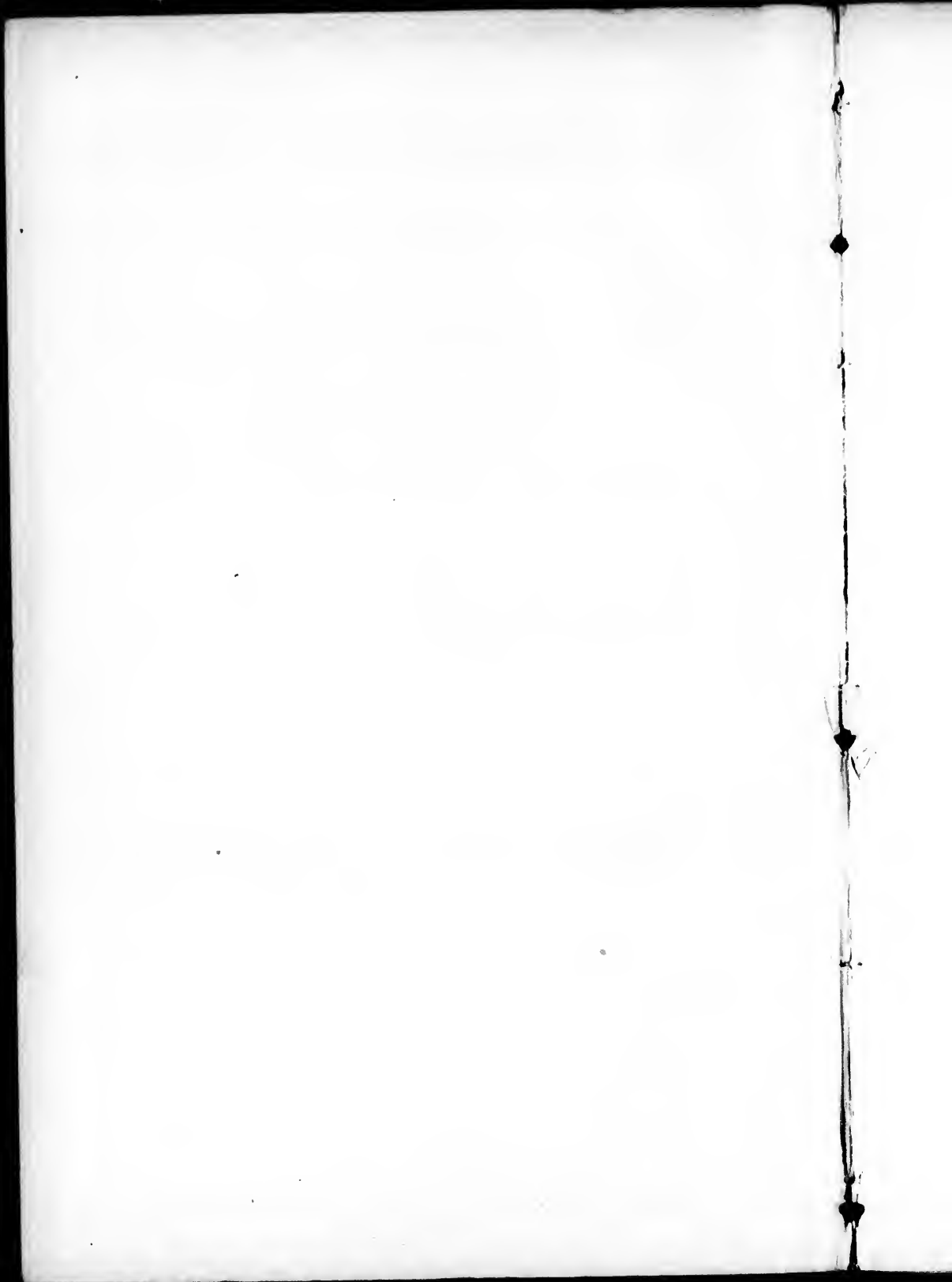
— OF THE —

Dominion Salvage and Wrecking Co.

MONTREAL:

"HERALD" PRINTING AND PUBLISHING COMPANY, (LIMITED);

1883.



COPY OF LOG

— OF —

STEAMER "FOLGER."

- December 25th, 1882.*—Monday, at 8 a.m. left Quebec for Murray Bay ; at 8.30 a.m., river full of ice as far as Shibbons' Mills ; passed Mills at 6 p.m. ; no ice to Murray Bay ; arrived at Murray Bay wharf at 10 p.m.
- December 26th, 1882.*—Tuesday, south wind ; little ice ; getting eccentric strap repaired.
- December 27th, 1882.*—Wednesday, at 8 a.m., east wind, and snowing ; ice a mile from wharf ; left Murray Bay at 1.05 p.m. ; river blocked with ice 4 miles from St. Denis ; arrived at St. Denis, 2.30 p.m. ; left St. Denis at 3 p.m. ; heavy snow-storm ; arrived Murray Bay, at 4.45 p.m.
- December 28th, 1882.*—Thursday, at 8 a.m., north-east wind and snow-storm ; reasons for not crossing to-day, could not get supplied with water in time to get to St. Denis.
- December 29th, 1882.*—Friday, at 8 a.m., north wind ; river full of ice as far as can see ; left Murray Bay at 10.30 a.m., for St. Denis ; wind south-west ; ice a mile from wharf, 11.30 a.m. ; stuck in ice abreast of St. Denis at 1.30 p.m. ; snowing, 2.40 p.m. ; got clear of ice, not able to go to St. Denis ; returned to Murray Bay ; arrived, 4.30 p.m.
- December 30th, 1882.*—Saturday, 8 a.m., north wind ; ice a mile from wharf ; left Murray Bay at 11.45 a.m., for St. Denis ; ice scattered ; arrived St. Denis, at 1.30 p.m. ; left St. Denis, 1.45 p.m. ; stuck in ice at 2.15 p.m. ; got clear at 3 p.m. ; returned St. Denis, arrived, 3.45 p.m.
- December 31st, 1882.*—Sunday, at 8 a.m., light east wind ; river full of ice as far as can see, at 3.30 p.m. ; heavy snow-storm ; east wind.
- January 1st, 1883.*—Monday, at 8 a.m., north wind ; river full of ice ; battures taken $\frac{1}{2}$ mile from wharf, at 10 a.m. ; battures broken away at 5 p.m. ; river completely blocked.

January 2nd, 1883.—Tuesday, at 8 a.m., north wind ; river full of ice as far as can see at 4 p.m. ; ice 3 miles from wharf ; no chance to cross to-day.

January 3rd, 1883.—Wednesday, at 8 a.m., south-west wind and very cold ; river full of ice ; at 12 p.m., left St. Denis ; ice scattered ; arrived Murray Bay, 2 p.m.

January 4th, 1883.—Thursday, light north wind at 8 a.m. ; ice scattered ; not required to cross to-day ; at 3 p.m., ice very heavy in river.

January 5th, 1883.—Friday, at 8 a.m., wind north, very cold ; left Murray Bay at 12.30 p.m. ; ice too heavy to cross ; returned to Murray Bay wharf at 1.15 p.m.

January 6th, 1883.—Saturday, at 8 a.m., strong north wind ; river full of fog ; cannot see if there is any ice ; 10 a.m., clear of fog, river blocked with ice ; impossible to leave wharf to-day.

January 7th, 1883.—Sunday, at 8 a.m., east wind, with heavy snow-storm ; river completely blocked with ice.

January 8th, 1883.—Monday, at 8 a.m., wind west, river blocked with ice ; impossible to leave wharf to-day ; 5 p.m., east wind, with signs of snow.

January 9th, 1883.—Tuesday, at 8 a.m., east wind, with snow-storm ; river blocked with ice ; at 4 p.m., no clear water to be seen ; light east wind.

January 10th, 1883.—Wednesday, at 8 a.m., left Murray Bay for St. Denis ; went as far as mid-stream ; had to return to Murray Bay ; ice too heavy to get to St. Denis ; arrived Murray Bay 11.30 a.m.

January 11th, 1883.—Thursday, at 8 a.m., light north wind ; river blocked with ice at 12 p.m. ; mending sheet-iron on steamer ; 12.30 p.m., wind south-west ; not able to leave wharf.

January 12th, 1883.—Friday, at 8 a.m., no wind ; river full of ice at 11.20 a.m. ; foggy ; left Murray Bay for St. Denis ; ice scattered ; pilot said too much fog to risk south shore ; returned Murray Bay wharf, arrived at 12.30 p.m. ; wind north.

January 13th, 1883.—Saturday, at 8 a.m., wind south-west ; river full of ice ; left Murray Bay at 12 p.m. ; north shore clear ; heavy snow-storm with east wind ; pilot says snowing too hard to cross ; returned Murray Bay, 1 p.m.

January 14th, 1883.—Sunday, at 8 a.m., north wind, fine weather ; lots of ice scattered at 2 p.m. ; river clear as far as can be seen.

January 15th, 1883.—Monday, at 8 a.m., wind north; lots of ice scattered at 12 p.m.; wind south-west; river full of ice; left Murray Bay 12.45 p.m.; had clear water within 4 miles of St Denis wharf; south shore blocked with ice; had to return to Murray Bay; arrived 2.15 p.m.; south wind.

January 16th, 1883.—Tuesday 8 a.m., river full of fog; north wind; cleaning boiler to-day; it is necessary to do so—engineer deems it necessary.

January 17th, 1883.—Wednesday at 8 a.m., north-east wind; north shore clear of ice; fine weather; at 12 p.m., river blocked with ice; light north wind; not finished cleaning boiler; at 4.30 p.m., not ready to cross.

January 18th, 1883.—Thursday, at 8 a.m., wind east; river blocked with ice; no clear water to be seen at 12 p.m.; river completely blocked at 4.45 p.m.; north-east wind.

January 19th, 1883.—Friday, at 8 a.m., no wind; few openings to be seen at 11.45 a.m.; left Murray Bay for St. Denis; clear water to mid-channel; south shore blocked with ice; had to return to Murray Bay; arrived 1.45 p.m.

January 20th, 1883.—Saturday, at 8 a.m., light east wind; river blocked at 12 p.m.; river completely blocked with ice, impossible to leave wharf; at 5 p.m., river full of ice; east wind and snowing.

January 21st, 1883.—Sunday at 8 a.m., east wind with rain; river full of ice; snowing heavily at 12 p.m.; wind south-west; ice scattered at 5 p.m.; south-west wind; river full of ice.

January 22nd, 1883.—Monday, at 8 a.m., wind west; river clear of ice; left Murray Bay at 10.45 a.m., for St. Denis; went as far as mid-channel; south shore blocked with ice; had to return to Murray Bay; arrived 11.25 a.m.; west wind, blowing a gale.

January 23rd, 1883.—Tuesday, at 8 a.m., wind west; ice scattered at 2.30 p.m.; left Murray Bay for St. Denis; went as far as mid-channel; south shore full of ice; returned to Murray Bay, arrived 3.45 p.m.; blowing gale, west wind.

January 24th, 1883.—Wednesday, at 8 a.m., no wind; north shore clear; foggy at 12 p.m.; stop valve on boilers not in working order; 1 p.m., stop valve ready; left Murray Bay 2.45 p.m., for St. Denis; went as far as mid-channel; south shore blocked; returned to Murray Bay; arrived at 4.45 p.m.; wind south-west.

January 25th, 1883.—Thursday, at 8 a.m., wind north, very cold; ice scattered at 10 a.m.; river completely blocked at 3 p.m.; not able to leave wharf, ice too heavy.

January 26th, 1883.—At 8 a.m., wind north ; very foggy ; north shore clear as far as can see ; at 11 a.m. left Murray Bay for St. Denis ; went as far as mid-channel ; south shore blocked ; returned to Murray Bay ; arrived 1.30 p.m. ; wind south-west, blowing gale.

January 27th, 1883.—Saturday, at 8 a.m., wind north ; left Murray Bay at 12.15 p.m., for St. Denis ; went 4 miles and had to return ; heavy snow-storm ; pilot said too much risk to go to south shore ; arrived Murray Bay 1.30 p.m.

January 28th, 1883.—Sunday, at 8 a.m., light north wind ; river full of ice ; few openings to be seen ; 12 p.m., north shore clear ; 5 p.m., ice heavy in river.

January 29th, 1883.—Monday at 8 a.m., wind north ; river full of fog ; left Murray Bay at 1 p.m., for St. Denis ; arrived St. Denis wharf at 2.30 p.m. ; left St. Denis at 2.40 p.m. ; ice scattered ; arrived Murray Bay at 4.45 p.m.

January 30th, 1883.—Tuesday, at 8 a.m., wind north ; very foggy ; clear on north shore as far as can be seen ; 12 p.m., left Murray Bay for St. Denis ; arrived at St. Denis 2.30 p.m. ; left St. Denis 2.40 p.m. ; ice scattered ; arrived at Murray Bay, 4.15 p.m.

January 31st, 1883.—Wednesday, at 8 a.m., wind north-east ; fine weather ; ice scattered ; left Murray Bay 1.45 p.m., for St. Denis ; arrived at St. Denis 2.15 p.m. ; left St. Denis at 2.25 p.m. ; wind south-west ; ice scattered ; arrived Murray Bay at 3.45 p.m.

February 1st, 1883.—Thursday, at 8 a.m., wind west, blowing a gale ; ice scattered ; tank connections leaking ; repairing ditto ; also oil feeders getting repaired ; 12 p.m. river quite clear ; tanks and oil feeders not ready at 3 p.m.

February 2nd, 1883.—Friday at 8 a.m., light north wind ; very foggy in river ; left Murray Bay for St. Denis at 9.45 a.m. ; went within one mile of St. Denis wharf ; battures taken heavy ; had to return to Murray Bay ; arrived 12 p.m.

February 3rd, 1883.—Saturday, at 8 a.m., wind north, very cold ; heavy fog in river ; at 10.30 a.m., cleared off ; river completely blocked with ice ; at 5 p.m., impossible to leave wharf.

February 4th, 1883.—Sunday, at 8 a.m. strong north-east wind and heavy snow-storm ; at 10 a.m., river completely blocked with ice ; at 3 p.m., wind south-west, snowing heavy yet.

February 5th, 1883.—Monday, at 8 a.m. wind west ; ice scattered ; fine weather at 12 p.m. ; wind south-west ; river full of ice at 1.15 p.m. ; left Murray Bay for St. Denis ; ice too heavy ; had to return to Murray Bay ; arrived at 2 p.m.

February 6th, 1883.—Tuesday, at 8 a.m., wind south-west, blowing a gale; river clear; left Murray Bay at 9.15 a.m., for St. Denis; went within 3 miles of wharf; south shore blocked with ice; had to return to Murray Bay; arrived 10.45 a.m.; wind south-west, blowing a gale.

February 7th, 1883.—Wednesday, at 8 a.m., wind south-east, with heavy snow-storm; ice scattered at 12 p.m.; east wind and snowing yet; left Murray Bay at 3.30 p.m. for St. Denis; went 3 miles, and had to return to Murray Bay; snow-storm too heavy; arrived at 4.45 p.m.

February 8th, 1883.—Thursday, at 8 a.m., wind north and very cold; also foggy; left Murray Bay at 9 a.m.; fog clear; went within 3 miles of St. Denis wharf; had to return; south shore blocked with ice; arrived Murray Bay at 10.45 a.m.; at 2 p.m., heavy snow-storm.

February 9th, 1883.—Friday, at 8 a.m., wind west, little ice to be seen, and fine weather; left Murray Bay at 9.15 a.m., for St. Denis; went within 3 miles of wharf; south shore blocked with ice; had to return to Murray Bay; arrived at 11.30 a.m.; at 4 p.m., river quite clear.

February 10th, 1883.—Saturday, at 8 a.m., wind north and very cold; left Murray Bay for St. Denis; river foggy; went as far as mid-channel; south shore blocked with ice; returned to Murray Bay; arrived at 12.30 p.m.; at 4 p.m., foggy and south-west wind, blowing a gale.

February 11th, 1883.—Sunday, at 8 a.m., wind north, fine weather; ice scattered at 1 p.m.; wind south-west and heavy snow-storm; at 5 p.m., still snowing.

February 12th, 1883.—Monday, at 8 a.m., wind north, blowing a stiff breeze; ice scattered; at 1 p.m., left Murray Bay for St. Denis; went as far as mid-channel; south shore blocked with ice; had to return to Murray Bay; arrived 2.45 p.m.; wind south-west.

February 13th, 1883.—Tuesday, at 6.30 a.m., wind north-west; left Murray Bay at 7 a.m., for St. Denis; at 8 a.m., wind west, 4 miles of St. Denis; south shore blocked with ice; had to return to Murray Bay; arrived at 8.30 a.m.; at 12 p.m., wind south-west, blowing a gale; at 5 p.m., still blowing.

February 14th, 1883.—Wednesday, at 8 a.m., wind south-west, fine weather; north side clear of ice; at 12 p.m., wind north-west; at 1.30 p.m., left Murray Bay for St. Denis; arrived at St. Denis at 2.50 p.m.; met scattered ice; left St. Denis at 4.45 p.m., for Murray Bay; arrived at 6 p.m.

February 15th, 1883.—Thursday, at 8 a. m., wind north-east, snowing ; river full of ice at 11.30 a. m. ; ice forming heavy against steamer at wharf ; broke all our ropes ; made fast to wharf again with much difficulty at 1.05 p. m. ; steam joint on safety valve broken ; necessary to repair it ; not able to leave wharf to-day.

February 16th, 1883.—Friday, at 8 a. m., light breeze of north wind ; ice scattered at 10 30 a. m. ; river blocked with ice at 2.30 p. m. ; steam joint broken again ; not able to leave wharf at 4.45 p. m. ; light breeze from north-west.

February 17th, 1883.—Saturday, at 8 a. m., wind south-west and rain ; north shore blocked with ice at 12 p. m. ; blowing a gale ; ice clear ; left Murray Bay at 2.30 p. m., for St. Denis ; went 1 mile and had to return to Murray Bay ; ice too heavy to cross ; arrived at 3 p. m.

February 18th, 1883.—Sunday, at 8 a. m., wind south-west ; no ice to be seen at 2 p. m. ; blowing a gale ; at 5 p. m., still blowing.

February 19th, 1883.—Monday, at 8 a. m., wind north-west ; ice scattered ; left Murray Bay at 9 a. m., for St. Denis ; went 7 miles ; at 10 a. m., got stuck in ice ; got clear of ice at 1.30 p. m. ; returned to Murray Bay ; arrived at 2.30 p. m. ; wind west, blowing a gale.

February 20th, 1883.—Tuesday, at 8 a. m., wind north, and very cold ; river full of fog ; left Murray Bay at 9.45 a. m. ; fog cleared off ; went 2 miles and had to return to Murray Bay ; ice too heavy to cross ; arrived at 11.45 a. m. ; at 3 p. m., wind south-west ; at 5 p. m., river full of ice.

February 21st, 1883.—Wednesday, at 8 a. m., wind east and snowing ; ice scattered ; left Murray Bay at 9.30 a. m., for St. Denis ; went 5 miles and had to return to Murray Bay ; south shore blocked with ice ; arrived at 11 a. m. ; at 3 p. m., river full of ice ; wind south-west ; at 5 p. m., still blocked.

February 22nd, 1883.—Thursday, at 8 a. m., wind north ; ice scattered ; fine weather ; left Murray Bay at 9 a. m., for St. Denis ; went within 2 miles of wharf ; south shore blocked with ice ; had to return to Murray Bay ; arrived at 11.15 a. m. ; at 3 p. m., wind south-west ; at 5 p. m., blowing stiff breeze.

February 23rd, 1883.—Friday, at 8 a. m., wind north-west, and very cold ; north shore clear of ice ; left Murray Bay at 9.25 a. m., for St. Denis ; went within one mile of St. Denis ; had to return to Murray Bay, not able to reach St. Denis wharf ; arrived Murray Bay at 11.45 a. m. ; at 3 p. m., wind north-west ; at 5 p. m., blowing a fresh breeze.

February 24th, 1883.—Saturday, at 8 a.m., wind north-west ; ice scattered ; left Murray Bay at 9.30 a.m., for St. Denis ; went 6 miles and had to return to Murray Bay ; south shore blocked with ice ; arrived at 11 a.m. ; at 3 p.m., wind south-west and fine weather ; at 5 p.m., blowing fresh breeze.

February 25th, 1883.—Sunday, at 8 a.m., wind east and snowing ; north shore clear of ice as far as can see ; at 12 p.m., wind south-west and still snowing ; at 3 p.m., little ice to be seen ; at 5 p.m., no change in the weather.

February 26th, 1883.—Monday, wind north-east, ice scattered ; left Murray Bay at 4.45 a.m. for St. Denis ; arrived St. Denis at 12.15 p.m. ; left St. Denis at 12.45 p.m. ; arrived Murray Bay at 2.15 p.m. ; at 5 p.m. wind north-east.

February 27th, 1883.—Tuesday, at 8 a.m., wind north-west, and very cold ; no ice to be seen on north shore ; left Murray Bay at 2.20 p.m. for St. Denis ; went within two miles of St. Denis ; had to return ; south shore blocked with ice ; arrived Murray Bay at 2.30 p.m. ; at 5 p.m. wind west.

February 28th, 1883.—Wednesday, at 8 a.m., wind north-east, and snowing ; left Murray Bay at 1.15 p.m. for St. Denis ; south shore blocked with ice ; had to return to Murray Bay ; arrived at 3 p.m. ; at 5 p.m. wind south-west, and snowing.

March 1st, 1883.—Thursday, at 8 a.m., wind north, and some fog in river ; no ice to be seen ; left Murray Bay at 12.45 for St. Denis ; went five miles ; had to return ; south shore blocked with ice ; arrived Murray Bay at 2.20 p.m. ; at 5 p.m. wind south-west.

March 2nd, 1883.—Friday, at 8 a.m., wind north-east ; north shore clear of ice ; left Murray Bay at 1 p.m. for St. Denis ; at 1 p.m. went 8 miles ; had to return ; south shore blocked with ice ; arrived Murray Bay at 2.15 p.m. ; at 5 p.m. wind north-east.

March 3rd, 1883.—Saturday, at 8 a.m., wind north, and very cold ; left Murray Bay at 10.30 a.m. for St. Denis ; arrived St. Denis at 12 p.m. ; left St. Denis at 12.15 a.m. for Murray Bay ; at 1.15 p.m. ice scattered ; at 5 p.m. wind north-east, and snowing.

March 4th, 1883.—Sunday, at 8 a.m., wind north-west, and very cold ; ice scattered ; at 3 p.m. river full of ice ; at 5 p.m. wind north.

March 5th, 1883.—Monday, at 8 a.m., wind north, and very cold ; north shore clear of ice ; left Murray Bay at 12.45 p.m. for St. Denis ; went four miles ; had to return, too much ice to cross ; arrived Murray Bay at 2 p.m. ; at 5 p.m. wind west.

- March 6th, 1883.*—Tuesday, at 8 a.m., wind north, very cold, river foggy; at 12 p.m. river completely blocked with ice; at 3 p.m. snowing, not able to leave wharf, too much ice; at 5 p.m. heavy snow-storm, and east wind.
- March 7th, 1883.*—Wednesday, at 8 a.m., wind east, and snowing; river blocked with ice at 12 p.m.; river completely blocked at 3 p.m.; impossible to leave wharf through ice; at 5 p.m. wind west, and blowing a stiff breeze.
- March 8th, 1883.*—Thursday, at 8 a.m., wind north; ice scattered on north shore; left Murray Bay wharf at 10.30 a.m. for St. Denis; went three miles, too much ice to cross; returned to Murray Bay; arrived at 11.15 a.m.; at 5 p.m. river clear of ice as far as can see; wind north.
- March 9th, 1883.*—Friday, at 8 a.m., wind north, fine weather; ice scattered; left Murray Bay, at 9.30 a.m. for St. Denis; went as far as mid-channel; south shore blocked with ice; had to return to Murray Bay; arrived at 11.15 a.m.; at 5 p.m. wind S. W., blowing a gale.
- March 10th, 1883.*—Saturday, at 8 a.m., wind east; river full of ice, but breaking; left Murray Bay at 9.15 a.m. for St. Denis; arrived St. Denis at 11 a.m.; left St. Denis at 11.15 a.m.; got stuck in ice at 12 p.m.; got clear of ice at 1.45 p.m.; arrived Murray Bay at 3 p.m.; at 5 p.m. east winds, and snowing.
- March 11th, 1883.*—Sunday, at 8 a.m. wind south-west, and snowing; ice scattered on north shore at 12 p.m.; clear and fine at 5 p.m.; north-east wind, blowing a gale.
- March 12th, 1883.*—Monday, at 8 a.m., wind south-west, blowing a gale; no ice to be seen; left Murray Bay at 11 a.m., for St. Denis; went four miles, had to return to Murray Bay; too much ice to cross; arrived at 12.30 p.m.; at 3 p.m., river full of ice; at 5 p.m., wind south-west.
- March 13th, 1883.*—Tuesday, at 8 a.m., wind south-west, fine weather; no ice to be seen on north shore; left Murray Bay at 12.05 p.m., for St. Denis; went as far as mid-channel; south shore blocked with ice; had to return to Murray Bay; arrived at 2 p.m.; at 5 p.m., wind west.
- March 14th, 1883.*—Wednesday, at 8 a.m., wind south-west; plenty of ice in river; left Murray Bay at 1.10 p.m., for St. Denis; went as far as mid-channel; south shore blocked with ice; had to return to Murray Bay; arrived at 3.15 p.m., and snowing hard; at 5 p.m., wind west.

March 15th, 1883.—Thursday, at 8 a.m., wind north-east; soft weather; ice scattered on north shore; left Murray Bay at 8.10 a.m., for St. Denis; arrived St. Denis at 9.35 a.m.; left St. Denis at 10.15 a.m. for Murray Bay; arrived at 11.45 a.m.; and snowing at 5 p.m.; wind north-west.

March 16th, 1883.—Friday, at 8 a.m., wind north-west; north shore closed of ice; left Murray Bay at 8.30 a.m. for St. Denis; went within 300 yards of St. Denis wharf; not able to reach wharf on account of ice; had to return to Murray Bay; arrived at 11.40 a.m.; at 5 p.m., wind north.

March 17th, 1883.—Saturday, at 8 a.m., wind north; no ice to be seen on north shore; left Murray Bay at 8.45, for St. Denis; went 4 miles, had to return to Murray Bay; south shore blocked with ice; arrived at 10.10 a.m., at 3 p.m., light south-west wind.

March 18th, 1883.—Sunday, at 8 a.m., wind south-west, blowing a gale; no ice to be seen in the river; at 3 p.m., raining; at 5 p.m., snowing.

JAMES MARTIN, MASTER.

Certified Correct:—

LOUIS TREMBLAY, PILOT.

