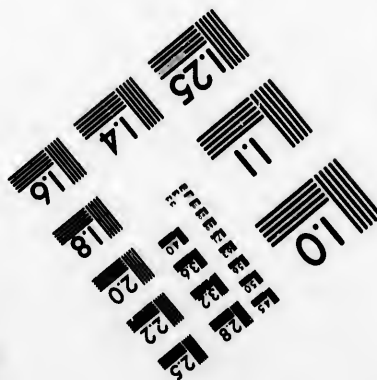
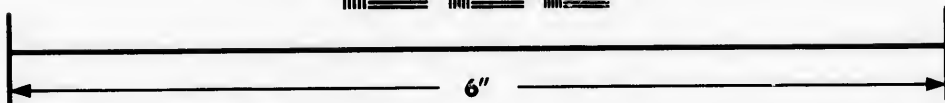
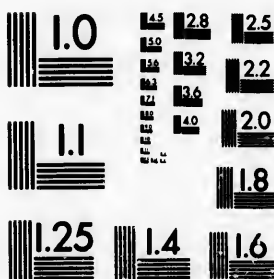


**IMAGE EVALUATION
TEST TARGET (MT-3)**



**Photographic
Sciences
Corporation**

23 WEST MAIN STREET
WEBSTER, N.Y. 14580
(716) 872-4503

1.5 1.8 2.0 2.2 2.5
1.8 2.0 2.2 2.5
1.8 2.0 2.2 2.5

**CIHM/ICMH
Microfiche
Series.**

**CIHM/ICMH
Collection de
microfiches.**



Canadian Institute for Historical Microreproductions / Institut canadien de microreproductions historiques

1.5 1.8 2.0 2.2 2.5
1.8 2.0 2.2 2.5
1.8 2.0 2.2 2.5

© 1982

Technical and Bibliographic Notes/Notes techniques et bibliographiques

The Institute has attempted to obtain the best original copy available for filming. Features of this copy which may be bibliographically unique, which may alter any of the images in the reproduction, or which may significantly change the usual method of filming, are checked below.

L'Institut a microfilmé le meilleur exemplaire qu'il lui a été possible de se procurer. Les détails de cet exemplaire qui sont peut-être uniques du point de vue bibliographique, qui peuvent modifier une image reproduite, ou qui peuvent exiger une modification dans la méthode normale de filmage sont indiqués ci-dessous.

- Coloured covers/
Couverture de couleur
- Covers damaged/
Couverture endommagée
- Covers restored and/or laminated/
Couverture restaurée et/ou pelliculée
- Cover title missing/
Le titre de couverture manque
- Coloured maps/
Cartes géographiques en couleur
- Coloured ink (i.e. other than blue or black)/
Encre de couleur (i.e. autre que bleue ou noire)
- Coloured plates and/or illustrations/
Planches et/ou illustrations en couleur
- Bound with other material/
Relié avec d'autres documents
- Tight binding may cause shadows or distortion along interior margin/
La reliure serrée peut causer de l'ombre ou de la distorsion le long de la marge intérieure
- Blank leaves added during restoration may appear within the text. Whenever possible, these have been omitted from filming/
Il se peut que certaines pages blanches ajoutées lors d'une restauration apparaissent dans le texte, mais, lorsque cela était possible, ces pages n'ont pas été filmées.
- Additional comments:/
Commentaires supplémentaires:

- Coloured pages/
Pages de couleur
- Pages damaged/
Pages endommagées
- Pages restored and/or laminated/
Pages restaurées et/ou pelliculées
- Pages discoloured, stained or foxed/
Pages décolorées, tachetées ou piquées
- Pages detached/
Pages détachées
- Showthrough/
Transparence
- Quality of print varies/
Qualité inégale de l'impression
- Includes supplementary material/
Comprend du matériel supplémentaire
- Only edition available/
Seule édition disponible
- Pages wholly or partially obscured by errata slips, tissues, etc., have been refilmed to ensure the best possible image/
Les pages totalement ou partiellement obscurcies par un feuillet d'errata, une pelure, etc., ont été filmées à nouveau de façon à obtenir la meilleure image possible.

This item is filmed at the reduction ratio checked below/
Ce document est filmé au taux de réduction indiqué ci-dessous.

10X	12X	14X	16X	18X	20X	22X	24X	26X	28X	30X	32X
					✓						

The copy filmed here has been reproduced thanks to the generosity of:

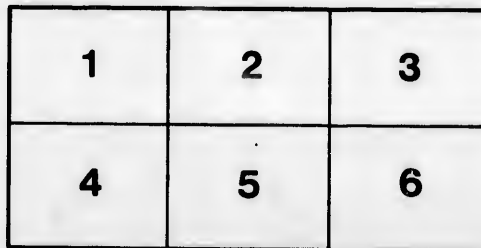
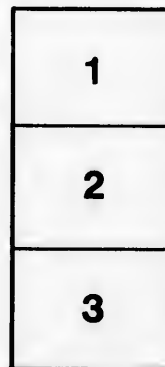
Thomas Fisher Rare Book Library,
University of Toronto Library

The images appearing here are the best quality possible considering the condition and legibility of the original copy and in keeping with the filming contract specifications.

Original copies in printed paper covers are filmed beginning with the front cover and ending on the last page with a printed or illustrated impression, or the back cover when appropriate. All other original copies are filmed beginning on the first page with a printed or illustrated impression, and ending on the last page with a printed or illustrated impression.

The last recorded frame on each microfiche shall contain the symbol \rightarrow (meaning "CONTINUED"), or the symbol ∇ (meaning "END"), whichever applies.

Maps, plates, charts, etc., may be filmed at different reduction ratios. Those too large to be entirely included in one exposure are filmed beginning in the upper left hand corner, left to right and top to bottom, as many frames as required. The following diagrams illustrate the method:



L'exemplaire filmé fut reproduit grâce à la générosité de:

Thomas Fisher Rare Book Library,
University of Toronto Library

Les images suivantes ont été reproduites avec le plus grand soin, compte tenu de la condition et de la netteté de l'exemplaire filmé, et en conformité avec les conditions du contrat de filmage.

Les exemplaires originaux dont la couverture en papier est imprimée sont filmés en commençant par le premier plat et en terminant soit par la dernière page qui comporte une empreinte d'impression ou d'illustration, soit par le second plat, selon le cas. Tous les autres exemplaires originaux sont filmés en commençant par la première page qui comporte une empreinte d'impression ou d'illustration et en terminant par la dernière page qui comporte une telle empreinte.

Un des symboles suivants apparaîtra sur la dernière image de chaque microfiche, selon le cas: le symbole \rightarrow signifie "A SUIVRE", le symbole ∇ signifie "FIN".

Les cartes, planches, tableaux, etc., peuvent être filmés à des taux de réduction différents. Lorsque le document est trop grand pour être reproduit en un seul cliché, il est filmé à partir de l'angle supérieur gauche, de gauche à droite, et de haut en bas, en prenant le nombre d'images nécessaire. Les diagrammes suivants illustrent la méthode.

aire
détails
des du
modifier
ger une
filmage

ées

e

y errata
d to

nt
e pelure.
çon à



The Sections belonging to this Company are all
Selected Agricultural Lands

MANITOBA

AND

THE CANADIAN NORTH-WEST

The Canada North-West Land Co. Limited

OFFER FOR SALE

WITHOUT CULTIVATION OR SETTLEMENT RESTRICTIONS

5,000,000 ACRES

OF CHOICE FARMING LANDS

INCLUDING THE FOLLOWING FAVORITE FARMING DISTRICTS

SOUTHERN MANITOBA

REGINA DISTRICT

QU'APPELLE DISTRICT

SOURIS DISTRICT

MOOSE MOUNTAIN

ALSO

Town Lots in the Rising Towns and Cities on the
Main Line of the Canadian Pacific Railway

HEAD OFFICE . 75 Lombard Street, London, E.O., England

HEAD OFFICE FOR CANADA . 65 King Street East, Toronto

THE MAIL PRINTING COMPANY PRINTERS AND ENGRAVERS, TORONTO CANADA

A. L. COLVILLE, Agent, CAMPBELLFORD

ALL THIS COMPANY'S SECTIONS ARE SELECT

The Canadian North-West, including Manitoba, is now recognized as the Great Wheat and Grain Producing Country of the World. The Lands of the CANADA NORTH-WEST LAND COMPANY are situated in the most desirable parts of this fertile Country, and are offered at Low Prices, without Settlement or Cultivation Conditions.

INTENDING SETTLERS

Should examine the list of Lands for Sale by the

CANADA NORTH-WEST LAND CO. Limited

COMPRISING 5,000,000 ACRES

Distributed through the Most Fertile and Desirable parts of Manitoba
and the Canadian North-West

THE RAILWAY BELT

The Company offer for sale choice sections throughout the Canadian Pacific Railway Main Line Belt, and in the vicinity of all the Towns and Cities on the line west of Portage la Prairie. These include all the following numbers undisposed of: 1, 9, 18, 21, 25, 33, and in the neighbourhood of Regina and Moosomin, all odd numbered sections except School Sections.

SOUTHERN MANITOBA--SOURIS--MOOSE MOUNTAIN

All Canadian Pacific Railway Lands south of the Railway belt have been acquired by this Company. This tract includes Southern Manitoba and the well-known Souris and Moose Mountain Districts.

AN ADVANTAGEOUS SELECTION

The Company's lands extend over such an immense area of excellent country, and include such a great diversity of the best agricultural land, that an almost unlimited selection is offered, which cannot fail to meet the requirements of all settlers, whether they intend to follow stock, grain, or mixed farming.

FAVOURABLE TERMS

The lands are offered without conditions as to settlement or cultivation.

Usual Terms are: One-sixth Cash; balance in five equal annual instalments. Interest at Six per cent. per annum, payable in advance.

Canadian Pacific Railway Land Grant Bonds taken at ten per cent. premium and accrued interest.

A Farm in the North-West, well situated, fertile, productive, and ready for the plough, costs less than clearing half the amount of land in a wooded country. The CANADA NORTH-WEST LAND COMPANY have lands of this description in the midst of settlements, and convenient to churches, schools and markets.

TIONS ARE SELECTED AGRICULTURAL LANDS

The Towns and Cities on the Main Line of the Canadian Pacific Railway, the distributing points for the adjacent country, which is rapidly filling up with settlers, offer an inviting field for capital, enterprise, and mechanical skill.

Merchants, Mechanics, Tradesmen

**And all who intend making their homes in the progressive
Trade Centres of the North-West**

Should consider the advantages of the Railway Towns and Cities, with their conveniences of communication and prospects of rapid growth and development.

The Company offer Lots for sale at all stations along the main line of the Canadian Pacific Railway, from Brandon west to British Columbia, including the following places

REGINA

QU'APPELLE

MOOSEJAW

BROADVIEW

MOOSOMIN

VIRDEN

ALEXANDER

OAK LAKE

GRENFELL

WHITEWOOD

USUAL TERMS

One-third Cash ; balance in six and twelve months. Interest at eight per cent. per annum on unpaid principle.

A LIBERAL REBATE ALLOWED FOR BUILDING

Why toil against overwhelming odds to restore the lost vitality of impoverished Farms, when millions of acres of virgin soil of inexhaustible fertility lie ready for immediate cultivation, in the Lands offered at Low Prices by the CANADA NORTH-WEST LAND COMPANY?

CANADA NORTH-WEST LAND CO. Limited

5,000,000 ACRES

OF

The Most Productive Agricultural Land

IN

MANITOBA AND THE CANADIAN NORTH-WEST

Town Lots in the rapidly growing Towns and Offices on the line of the

CANADIAN PACIFIC RAILWAY

THE GREAT TRANS-CONTINENTAL ROUTE OF AMERICA

For Maps, Prices and full particulars concerning all Lands and Town Lots offered by the Company, apply to their Agents as follows

ALEX. BAIN, 360 Main Street, WINNIPEG, Man.

J. F. FRAME, Virden, Man.

A. G. THORBURN, Broadview, N.W.T.

SALTER M. JARVIS, Qu'Appelle Station, N.W.T., Troy P.O., N.W.T.

ALEX. L. LUNAN, Regina, N.W.T.

M. H. WHITE FRASER, Moosejaw, N.W.T.

OLIVER NEFF, Moosomin, N.W.T.

OR TO THE

Head Office for Canada, 65 King Street East, Toronto

**E. B. OSLER,
W. B. SCARTH, }**

Managing Directors

F. J. COSLING, Secretary

