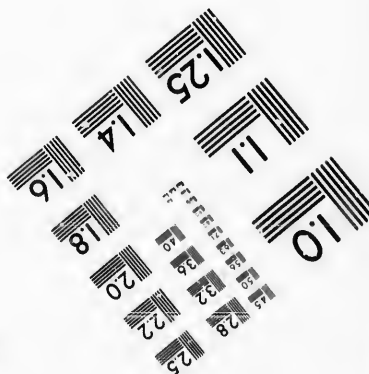
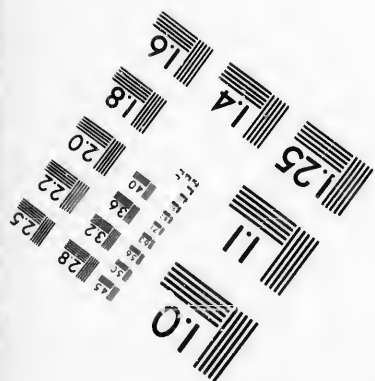
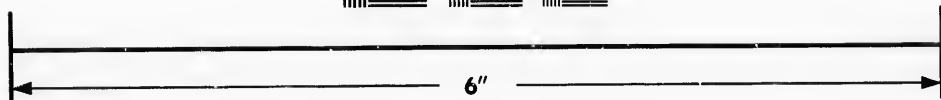
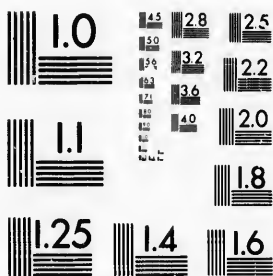


**IMAGE EVALUATION  
TEST TARGET (MT-3)**



**Photographic  
Sciences  
Corporation**

23 WEST MAIN STREET  
WEBSTER, N.Y. 14580  
(716) 872-4503

15 28  
16 32  
18 22  
19 20  
1.8

**CIHM/ICMH  
Microfiche  
Series.**

**CIHM/ICMH  
Collection de  
microfiches.**



Canadian Institute for Historical Microreproductions / Institut canadien de microreproductions historiques

11  
01  
05  
97

**© 1987**

Technical and Bibliographic Notes/Notes techniques et bibliographiques

The Institute has attempted to obtain the best original copy available for filming. Features of this copy which may be bibliographically unique, which may alter any of the images in the reproduction, or which may significantly change the usual method of filming, are checked below.

L'institut a microfilmé le meilleur exemplaire qu'il lui a été possible de se procurer. Les détails de cet exemplaire qui sont peut-être uniques du point de vue bibliographique, qui peuvent modifier une image reproduite, ou qui peuvent exiger une modification dans la méthode normale de filmage sont indiqués ci-dessous.

- |  |  |
|--|--|
| <input type="checkbox"/> Coloured covers/<br>Couverture de couleur   | <input type="checkbox"/> Coloured pages/<br>Pages de couleur   |
| <input type="checkbox"/> Covers damaged/<br>Couverture endommagée  | <input type="checkbox"/> Pages damaged/<br>Pages endommagées   |
| <input type="checkbox"/> Covers restored and/or laminated/<br>Couverture restaurée et/ou pelliculée  | <input type="checkbox"/> Pages restored and/or laminated/<br>Pages restaurées et/ou pelliculées  |
| <input type="checkbox"/> Cover title missing/<br>Le titre de couverture manque   | <input checked="" type="checkbox"/> Pages discoloured, stained or foxed/<br>Pages décolorées, tachetées ou piquées   |
| <input type="checkbox"/> Coloured maps/<br>Cartes géographiques en couleur   | <input type="checkbox"/> Pages detached/<br>Pages détachées  |
| <input type="checkbox"/> Coloured ink (i.e. other than blue or black)/<br>Encre de couleur (i.e. autre que bleue ou noire)   | <input checked="" type="checkbox"/> Showthrough/<br>Transparence   |
| <input type="checkbox"/> Coloured plates and/or illustrations/<br>Planches et/ou illustrations en couleur  | <input type="checkbox"/> Quality of print varies/<br>Qualité inégale de l'impression   |
| <input type="checkbox"/> Bound with other material/<br>Relié avec d'autres documents   | <input type="checkbox"/> Includes supplementary material/<br>Comprend du matériel supplémentaire   |
| <input type="checkbox"/> Tight binding may cause shadows or distortion<br>along interior margin/<br>La reliure serrée peut causer de l'ombre ou de la<br>distorsion le long de la marge intérieure   | <input type="checkbox"/> Only edition available/<br>Seule édition disponible   |
| <input type="checkbox"/> Blank leaves added during restoration may<br>appear within the text. Whenever possible, these<br>have been omitted from filming/<br>Il se peut que certaines pages blanches ajoutées<br>lors d'une restauration apparaissent dans le texte,<br>mais, lorsque cela était possible, ces pages n'ont<br>pas été filmées. | <input type="checkbox"/> Pages wholly or partially obscured by errata<br>slips, tissues, etc., have been refilmed to<br>ensure the best possible image/<br>Les pages totalement ou partiellement<br>obscurcies par un feuillet d'errata, une pelure,<br>etc., ont été filmées à nouveau de façon à<br>obtenir la meilleure image possible. |
| <input checked="" type="checkbox"/> Additional comments:/<br>Commentaires supplémentaires:   | [Printed ephemera] 1 sheet (verso blank)   |

This item is filmed at the reduction ratio checked below/  
Ce document est filmé au taux de réduction indiqué ci-dessous.

10X	14X	18X	22X	26X	30X
<input type="checkbox"/>	<input type="checkbox"/>	<input type="checkbox"/>	<input checked="" type="checkbox"/>	<input type="checkbox"/>	<input type="checkbox"/>
12X	16X	20X	24X	28X	32X

The copy filmed here has been reproduced thanks to the generosity of:

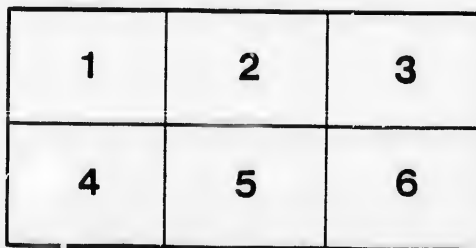
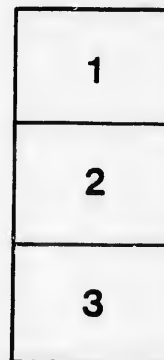
New Brunswick Museum  
Saint John

The images appearing here are the best quality possible considering the condition and legibility of the original copy and in keeping with the filming contract specifications.

Original copies in printed paper covers are filmed beginning with the front cover and ending on the last page with a printed or illustrated impression, or the back cover when appropriate. All other original copies are filmed beginning on the first page with a printed or illustrated impression, and ending on the last page with a printed or illustrated impression.

The last recorded frame on each microfiche shall contain the symbol  $\rightarrow$  (meaning "CONTINUED"), or the symbol  $\nabla$  (meaning "END"), whichever applies.

Maps, plates, charts, etc., may be filmed at different reduction ratios. Those too large to be entirely included in one exposure are filmed beginning in the upper left hand corner, left to right and top to bottom, as many frames as required. The following diagrams illustrate the method:



L'exemplaire filmé fut reproduit grâce à la générosité de:

New Brunswick Museum  
Saint John

Les images suivantes ont été reproduites avec le plus grand soin, compte tenu de la condition et de la netteté de l'exemplaire filmé, et en conformité avec les conditions du contrat de filmage.

Les exemplaires originaux dont la couverture en papier est imprimée sont filmés en commençant par le premier plat et en terminant soit par la dernière page qui comporte une empreinte d'impression ou d'illustration, soit par le second plat, selon le cas. Tous les autres exemplaires originaux sont filmés en commençant par la première page qui comporte une empreinte d'impression ou d'illustration et en terminant par la dernière page qui comporte une telle empreinte.

Un des symboles suivants apparaîtra sur la dernière image de chaque microfiche, selon le cas: le symbole  $\rightarrow$  signifie "A SUIVRE", le symbole  $\nabla$  signifie "FIN".

Les cartes, planches, tableaux, etc., peuvent être filmés à des taux de réduction différents. Lorsque le document est trop grand pour être reproduit en un seul cliché, il est filmé à partir de l'angle supérieur gauche, de gauche à droite, et de haut en bas, en prenant le nombre d'images nécessaire. Les diagrammes suivants illustrent la méthode.

MS 11 (5)

# The Saint John Oratorio Society,

Incorporated by Act of Assembly, A. D. 1883.

Meets for Practice on  
Monday Evenings,  
at 8 o'clock,  
In Oddfellows' Hall.

SEASON 1889-90.

## ←-REPERTOIRE:-→

HANDEL'S "MESSIAH," "JUDAS MACCABÆUS," "SAMSON."  
 MENDELSSOHN'S "ELIJAH," "ST. PAUL," "HYMN OF PRAISE,"  
 "42ND PSALM," "HEAR MY PRAYER," "ATHALIE."  
 HAYDN'S "CREATION," "SEASONS,"  
 SPOHR'S "LAST JUDGMENT,"  
 MACFARREN'S "MAY DAY,"  
 &c., &c.

## BOARD OF MANAGEMENT:

GEN. D. B. WARNER, <i>President.</i>	MR. JAS. S. HARDING.
REV. R. MATHERS, <i>Vice-President.</i>	GEO. C. COSTER.
MR. THOS. MORLEY, <i>Conductor.</i>	ALFRED PORTER, <i>Librarian.</i>
REV. J. M. DAVENPORT.	GEO. B. HEGAN, <i>Treasurer.</i>
MR. F. S. THOMPSON, <i>Secretary.</i>	
Auditors:—MESSRS. H. B. SCHOFIELD, FRED. FOWLER AND JOHN WILSON.	

*The Society is now commencing its eighth season. In the past it has done much to promote the appreciation of high class music in our midst, and, by its Annual Concerts and other performances, gives our citizens an opportunity they could not otherwise have, of hearing the works of the great masters. It also affords to its members of both sexes a means of innocent and intellectual recreation.*

*In order to give the Grand Summer Concerts in a fitting manner, great expense is entailed in importing suitable Soloists and Orchestra. Hitherto the receipts have never*

5.  
been sufficient to defray this, and last season the Society thereby lost three hundred and fifty dollars.

To enable it to carry on its work, it has to rely upon its Honorary Members' List. This formerly contained 171 names, but in 1888-9 it dropped to 151. Looking at the support from this source similar Societies receive in other cities, the Board think that at least double that number of our residents should come forward to help so deserving a cause.

The Conductor and other Officers of the Society gratuitously devote a very large amount of time and attention to its affairs, and the Active Members have to undergo many long and tedious rehearsals in order to render the difficult music with the requisite proficiency. The Society is also much indebted to the local Soloists and Instrumentalists for voluntary kind assistance at the previous Concerts.

The Board therefore hope you will show your interest in the Society by becoming an Honorary Member. The Annual Fee is **ONE DOLLAR**, which gives the following privileges:—(1) **Free Admission** to hear the weekly practices of the Society; (2) **Free Admission** to the Orchestral Rehearsals previous to the Concerts; and (3) **Free Admission** to either a Concert or *Conversazione* given expressly for the Honorary Members. With regard to the last mentioned, in 1888, the Board invited the Honorary Members to a highly successful Matinee given by the Listemann Sextette.

Honorary Members' tickets can be obtained from the Secretary, **MR. F. S. THOMPSON**, 85 Prince William Street, or through any of the members.

The Oratorios to be performed about June next are **HANDEL'S "SAMSON"** and **MENDELSSOHN'S "ATHALIE."**



