

**CIHM
Microfiche
Series
(Monographs)**

**ICMH
Collection de
microfiches
(monographies)**



Canadian Institute for Historical Microreproductions / Institut canadien de microreproductions historiques

© 1995

Technical and Bibliographic Notes / Notes techniques et bibliographiques

The Institut has attempted to obtain the best original copy available for filming. Features of this copy which may be bibliographically unique, which may alter any of the images in the reproduction, or which may significantly change the usual method of filming, are checked below.

L'Institut a microfilmé le meilleur exemplaire qu'il lui a été possible de se procurer. Les détails de cet exemplaire qui sont peut-être uniques du point de vue bibliographique, qui peuvent modifier une image reproduite, ou qui peuvent exiger une modification dans la méthode normale de filmage sont indiqués ci-dessous.

- | | |
|--|--|
| <input type="checkbox"/> Coloured covers/
Couverture de couleur | <input type="checkbox"/> Coloured pages/
Pages de couleur |
| <input type="checkbox"/> Covers damaged/
Couverture endommagée | <input type="checkbox"/> Pages damaged/
Pages endommagées |
| <input type="checkbox"/> Covers restored and/or laminated/
Couverture restaurée et/ou pelliculée | <input type="checkbox"/> Pages restored and/or laminated/
Pages restaurées et/ou pelliculées |
| <input type="checkbox"/> Cover title missing/
Le titre de couverture manque | <input checked="" type="checkbox"/> Pages discoloured, stained or foxed/
Pages décolorées, tachetées ou piquées |
| <input type="checkbox"/> Coloured maps/
Cartes géographiques en couleur | <input type="checkbox"/> Pages detached/
Pages détachées |
| <input checked="" type="checkbox"/> Coloured ink (i.e. other than blue or black)/
Encre de couleur (i.e. autre que bleue ou noire) | <input checked="" type="checkbox"/> Showthrough/
Transparence |
| <input checked="" type="checkbox"/> Coloured plates and/or illustrations/
Planches et/ou illustrations en couleur | <input type="checkbox"/> Quality of print varies/
Qualité inégale de l'impression |
| <input type="checkbox"/> Bound with other material/
Relié avec d'autres documents | <input type="checkbox"/> Continuous pagination/
Pagination continue |
| <input type="checkbox"/> Tight binding may cause shadows or distortion
along interior margin/
La reliure serrée peut causer de l'ombre ou de la
distorsion le long de la marge intérieure | <input type="checkbox"/> Includes index(es)/
Comprend un (des) index |
| <input type="checkbox"/> Blank leaves added during restoration may appear
within the text. Whenever possible, these have
been omitted from filming/
Il se peut que certaines pages blanches ajoutées
lors d'une restauration apparaissent dans le texte,
mais, lorsque cela était possible, ces pages n'ont
pas été filmées. | Title on header taken from: /
Le titre de l'en-tête provient: |
| <input type="checkbox"/> Additional comments: /
Commentaires supplémentaires: | <input type="checkbox"/> Title page of issue/
Page de titre de la livraison |
| | <input type="checkbox"/> Caption of issue/
Titre de départ de la livraison |
| | <input type="checkbox"/> Masthead/
Général (périodiques) de la livraison |

This item is filmed at the reduction ratio checked below/
Ce document est filmé au taux de réduction indiqué ci-dessous.

10X	12X	14X	16X	18X	20X	22X	24X	26X	28X	30X	32X
					/						

The copy filmed here has been reproduced thanks to the generosity of:

National Library of Canada

The images appearing here are the best quality possible considering the condition and legibility of the original copy and in keeping with the filming contract specifications.

Original copies in printed paper covers are filmed beginning with the front cover and ending on the last page with a printed or illustrated impression, or the back cover when appropriate. All other original copies are filmed beginning on the first page with a printed or illustrated impression, and ending on the last page with a printed or illustrated impression.

The last recorded frame on each microfiche shall contain the symbol \rightarrow (meaning "CONTINUED"), or the symbol ∇ (meaning "END"), whichever applies.

Maps, plates, charts, etc., may be filmed at different reduction ratios. Those too large to be entirely included in one exposure are filmed beginning in the upper left hand corner, left to right and top to bottom, as many frames as required. The following diagrams illustrate the method:

1	2	3
---	---	---

1	2
4	5

L'exemplaire filmé fut reproduit grâce à la générosité de:

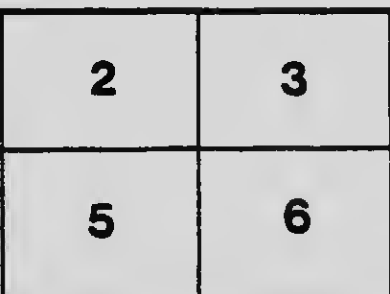
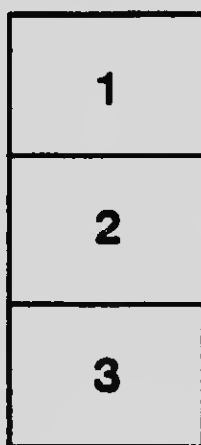
Bibliothèque nationale du Canada

Les images suivantes ont été reproduites avec le plus grand soin, compte tenu de la condition et de la netteté de l'exemplaire filmé, et en conformité avec les conditions du contrat de filmage.

Les exemplaires originaux dont la couverture en papier est imprimée sont filmés en commençant par le premier plat et en terminant soit par la dernière page qui comporte une empreinte d'impression ou d'illustration, soit par le second plat, selon le cas. Tous les autres exemplaires originaux sont filmés en commençant par la première page qui comporte une empreinte d'impression ou d'illustration et en terminant par la dernière page qui comporte une telle empreinte.

Un des symboles suivants apparaîtra sur la dernière image de chaque microfiche, selon le cas: le symbole \rightarrow signifie "A SUIVRE", le symbole ∇ signifie "FIN".

Les cartes, planches, tableaux, etc., peuvent être filmés à des taux de réduction différents. Lorsque le document est trop grand pour être reproduit en un seul cliché, il est filmé à partir de l'angle supérieur gauche, de gauche à droite, et de haut en bas, en prenant le nombre d'images nécessaire. Les diagrammes suivants illustrent la méthode.



MICROCOPY RESOLUTION TEST CHART

(ANSI and ISO TEST CHART No. 2)



4.5

5.0

5.6

6.3

7.1

8.0

9.0

10

11.2

12.5

14

16

18

20

22.5

25

28

32

36

40

45

50

56



APPLIED IMAGE Inc

1653 East Main Street
Rochester, New York 14609 USA
(716) 482 - 0300 - Phone
(716) 288 - 5989 - Fax



National Library
of Canada

Bibliothèque nationale
du Canada

10/11/19
9

Figure it out for yourself!

Under Sir Wilfrid Laurier and the Liberal Government, Canada has prospered more rapidly than any other country in the world. In twelve years there has been an increase of one thousand millions of dollars in the export trade alone. This was made possible by the work done to promote trade and keep foreign markets open to Canadian farm products and manufactures by Sir Wilfrid Laurier and the Liberal Government.

o



Jack Canuck:

Those Liberal records seem all right to me.

By their works ye shall know them.

Sir Wilfrid Laurier and the Liberal Government planned and are building the Grand Trunk Pacific Railroad, are deepening the waterways, improving the St. Lawrence River and opening hundreds of thousands of square miles of fertile land to settlement. They have improved the condition of labor, kept foreign markets open to Canadian farm products and have made Confederation a reality by unifying Canada and giving her a standing among the nations. Don't forget that the credit for all these wonderful achievements is due to Sir Wilfrid Laurier and the Liberal Government.

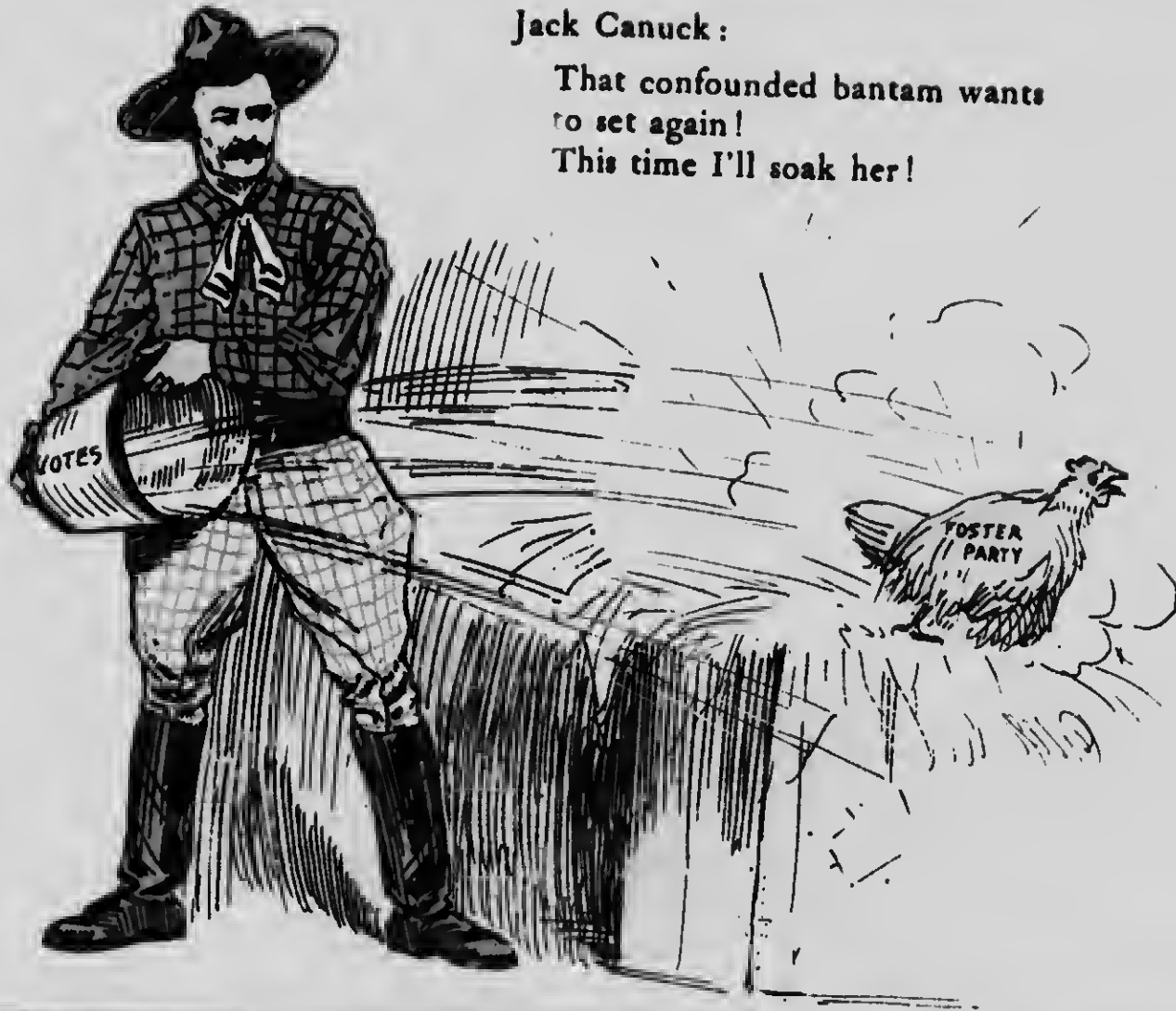


10550
1211
1908
p222

Jack Canuck:

That confounded bantam wants
to set again!

This time I'll soak her!





JACK CANUCK—"That's the kind of a crop that suits me."

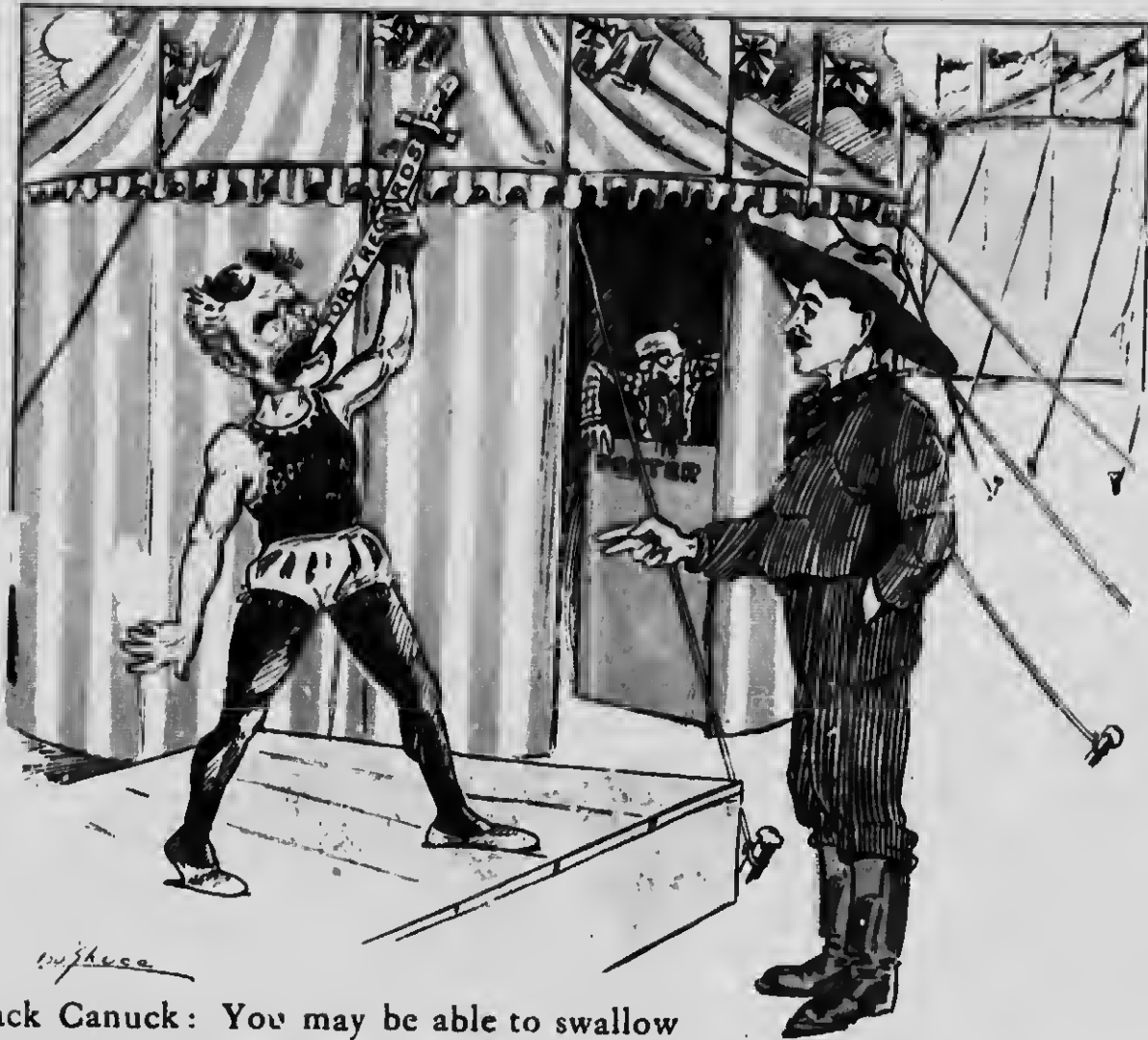
TORY PARTY—"Um-er but good crops are awfully hard on the land." .



Lou Shuck.

Jack Canuck:

I like to walk with a
man who can set the
pace for me.



Jack Canuck: You may be able to swallow that, but I can't.

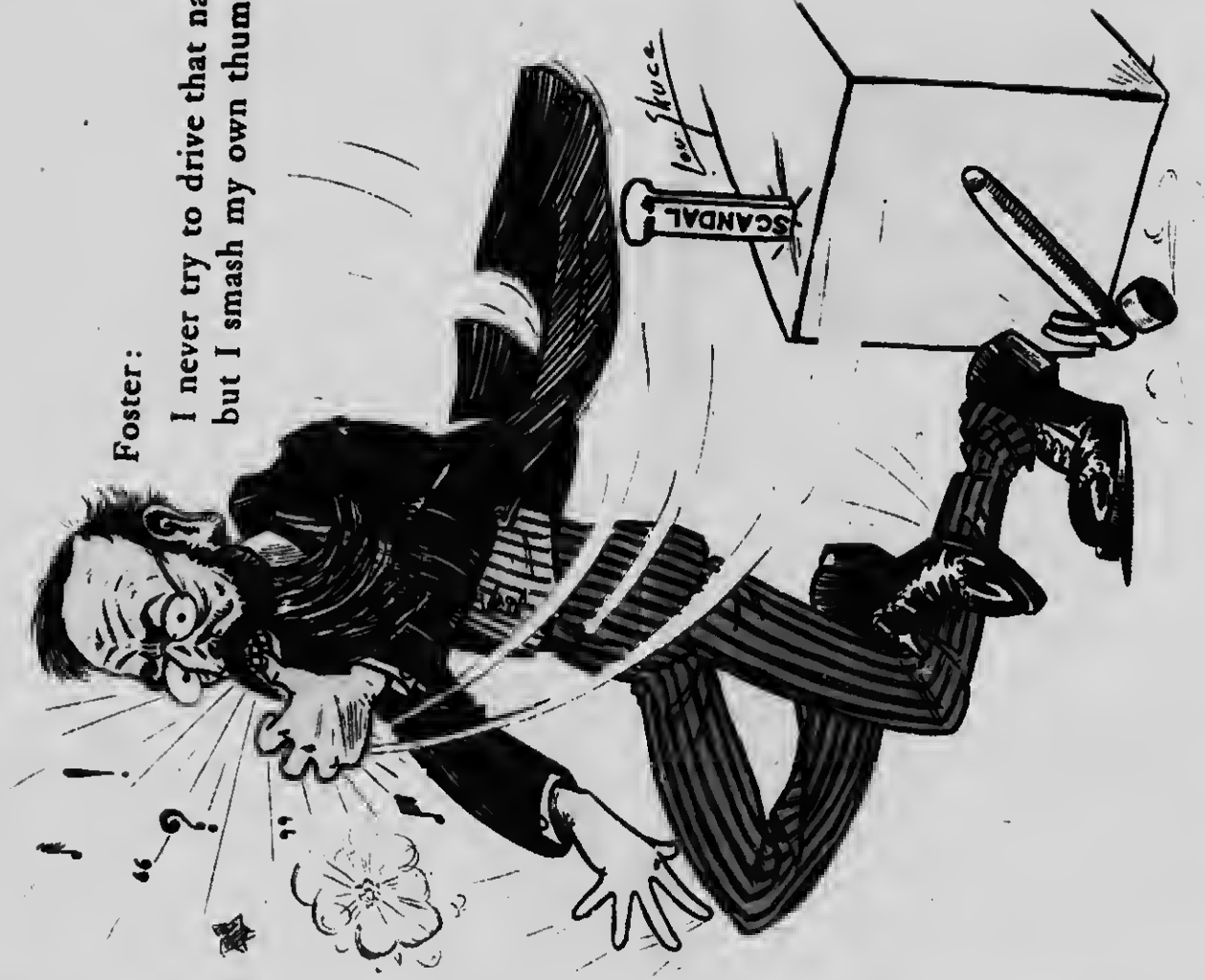


Jack Canuck: "Never mind' the Tory Party. Just tell me of any thing this particular bunch, that represents it, ever did for their country."

Canvasser: "Well, I am not sure, but I think that when they were in power they crossed the jack-rabbit with the prairie hen so as to get a woolly egg that wouldn't freeze in the Northwest."

Foster:

I never try to drive that nail
but I smash my own thumb.



Prosperity
Increasing
Business
Comfort
Harmony
New Settlers
High Wages
Honest
Government
Re-election



**Jack Canuck--
That's what
I figure it
out to.**



