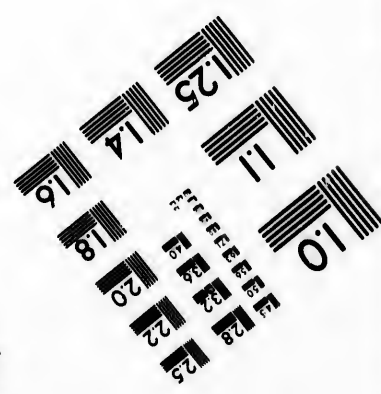
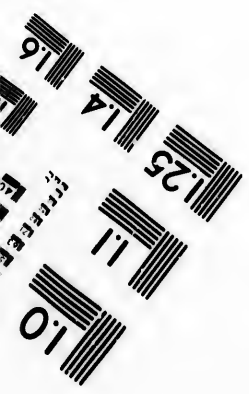
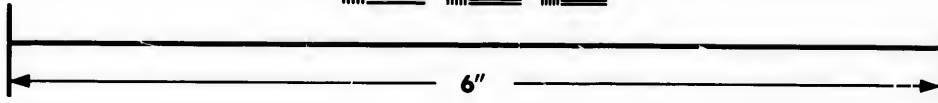
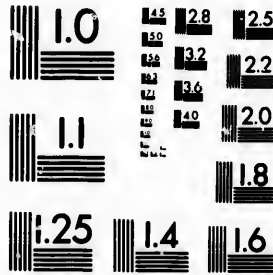


**IMAGE EVALUATION
TEST TARGET (MT-3)**



**Photographic
Sciences
Corporation**

23 WEST MAIN STREET
WEBSTER, N.Y. 14580
(716) 872-4503

Canadian Institut



**CIHM/ICMH
Microfiche
Series.**

**CIHM/ICMH
Collection de
microfiches.**



Canadian Institute for Historical Microreproductions / Institut canadien de microreproductions historiques

© 1983

Technical and Bibliographic Notes/Notes techniques et bibliographiques

The Institute has attempted to obtain the best original copy available for filming. Features of this copy which may be bibliographically unique, which may alter any of the images in the reproduction, or which may significantly change the usual method of filming, are checked below.

L'Institut a microfilmé le meilleur exemplaire qu'il lui a été possible de se procurer. Les détails de cet exemplaire qui sont peut-être uniques du point de vue bibliographique, qui peuvent modifier une image reproduite, ou qui peuvent exiger une modification dans la méthode normale de filmage sont indiqués ci-dessous.

- | | |
|---|---|
| <input type="checkbox"/> Coloured covers/
Couverture de couleur | <input type="checkbox"/> Coloured pages/
Pages de couleur |
| <input type="checkbox"/> Covers damaged/
Couverture endommagée | <input type="checkbox"/> Pages damaged/
Pages endommagées |
| <input type="checkbox"/> Covers restored and/or laminated/
Couverture restaurée et/ou pelliculée | <input type="checkbox"/> Pages restored and/or laminated/
Pages restaurées et/ou pelliculées |
| <input type="checkbox"/> Cover title missing/
Le titre de couverture manque | <input checked="" type="checkbox"/> Pages discoloured, stained or foxed/
Pages décolorées, tachetées ou piquées |
| <input type="checkbox"/> Coloured maps/
Cartes géographiques en couleur | <input type="checkbox"/> Pages detached/
Pages détachées |
| <input type="checkbox"/> Coloured ink (i.e. other than blue or black)/
Encre de couleur (i.e. autre que bleue ou noire) | <input checked="" type="checkbox"/> Showthrough/
Transparence |
| <input type="checkbox"/> Coloured plates and/or illustrations/
Planches et/ou illustrations en couleur | <input type="checkbox"/> Quality of print varies/
Qualité inégale de l'impression |
| <input type="checkbox"/> Bound with other material/
Relié avec d'autres documents | <input type="checkbox"/> Includes supplementary material/
Comprend du matériel supplémentaire |
| <input type="checkbox"/> Tight binding may cause shadows or distortion along interior margin/
La reliure serrée peut causer de l'ombre ou de la distortion le long de la marge intérieure | <input type="checkbox"/> Only edition available/
Seule édition disponible |
| <input type="checkbox"/> Blank leaves added during restoration may appear within the text. Whenever possible, these have been omitted from filming/
Il se peut que certaines pages blanches ajoutées lors d'une restauration apparaissent dans le texte, mais, lorsque cela était possible, ces pages n'ont pas été filmées. | <input type="checkbox"/> Pages wholly or partially obscured by errata slips, tissues, etc., have been refilmed to ensure the best possible image/
Les pages totalement ou partiellement obscurcies par un feuillet d'errata, une pelure, etc., ont été filmées à nouveau de façon à obtenir la meilleure image possible. |
| <input type="checkbox"/> Additional comments:
Commentaires supplémentaires: | |

This item is filmed at the reduction ratio checked below/
Ce document est filmé au taux de réduction indiqué ci-dessous.

10X	14X	18X	22X	26X	30X
<input type="checkbox"/>	<input type="checkbox"/>	<input type="checkbox"/>	<input checked="" type="checkbox"/>	<input type="checkbox"/>	<input type="checkbox"/>
12X	16X	20X	24X	28X	32X

The copy filmed here has been reproduced thanks to the generosity of:

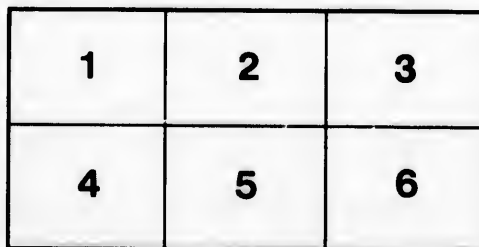
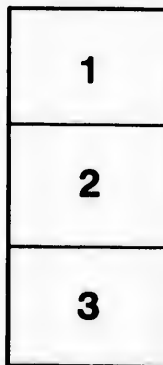
Entomology Research Library
Agriculture Canada

The images appearing here are the best quality possible considering the condition and legibility of the original copy and in keeping with the filming contract specifications.

Original copies in printed paper covers are filmed beginning with the front cover and ending on the last page with a printed or illustrated impression, or the back cover when appropriate. All other original copies are filmed beginning on the first page with a printed or illustrated impression, and ending on the last page with a printed or illustrated impression.

The last recorded frame on each microfiche shall contain the symbol \rightarrow (meaning "CONTINUED"), or the symbol ∇ (meaning "END"), whichever applies.

Maps, plates, charts, etc., may be filmed at different reduction ratios. Those too large to be entirely included in one exposure are filmed beginning in the upper left hand corner, left to right and top to bottom, as many frames as required. The following diagrams illustrate the method:



L'exemplaire filmé fut reproduit grâce à la générosité de:

Bibliothèque de recherche entomologique
Agriculture Canada

Les images suivantes ont été reproduites avec le plus grand soin, compte tenu de la condition et de la netteté de l'exemplaire filmé, et en conformité avec les conditions du contrat de filmage.

Les exemplaires originaux dont la couverture en papier est imprimée sont filmés en commençant par le premier plat et en terminant soit par la dernière page qui comporte une empreinte d'impression ou d'illustration, soit par le second plat, selon le cas. Tous les autres exemplaires originaux sont filmés en commençant par la première page qui comporte une empreinte d'impression ou d'illustration et en terminant par la dernière page qui comporte une telle empreinte.

Un des symboles suivants apparaîtra sur la dernière image de chaque microfiche, selon le cas: le symbole \rightarrow signifie "A SUIVRE", le symbole ∇ signifie "FIN".

Les cartes, planches, tableaux, etc., peuvent être filmés à des taux de réduction différents. Lorsque le document est trop grand pour être reproduit en un seul cliché, il est filmé à partir de l'angle supérieur gauche, de gauche à droite, et de haut en bas, en prenant le nombre d'images nécessaire. Les diagrammes suivants illustrent la méthode.

W. A. Lillie 1893

THE NORTH AMERICAN PSYCHODIDÆ.

By S. W. WILLISTON, Lawrence, Ks.

In the study of numerous new species of *Psychoda* and *Pericoma* from the island of St. Vincent, I have compared all the material in the family from the United States and elsewhere that is accessible to me. I give here the description of two new species, which are of interest, because of their large size. *P. alternata* Say is our most common species. It is often found about damp places, among leaves, and is frequently attracted by lights during Summer nights. It probably occurs over the greater part of the United States, and will be recognized by its pale color, small size, and the black dots of hair around the margin of the wings.

***Psychoda albipunctata* n. sp. ♂.**—Wings rather broad, clothed rather thinly with brownish and blackish hairs; a tuft of blackish hair near each furcation; at the extremity of each vein, save the first and last, a smaller white one; a small white tuft also, near the black one of the anterior furcation; the prefurca of the second vein with longer and yellowish hair. Abdomen in ground color luteous and blackish, the hair abundant and erect, for the most part gray, or brownish gray, with black intermixed. Hair of the thorax brownish gray, abundant; antennæ yellow, elongate, longer than the abdomen; basal joints moderately thickened, the remaining joints slender, verticellate with white hairs. Legs brown, clothed with brownish hair and tomentum, with narrow annuli of white tomentum, at tip of tibiæ and metatarsi, hind metatarsi ciliated; tarsi stout. Length 2.2 mm.; of wings, 2.2 mm.

Three specimens, Havana, Cuba. Col. Nat. Museum.

***Psychoda slossoni* n. sp. ♂.**—Wings rather narrow, the upper surface clothed for the most part with rather long, black hair, with one or two poorly differentiated bands or spots of whitish hair; costa at the base with a large tuft of dense, long, black hair, beyond the tuft the hair becomes gradually shorter and somewhat intermixed with whitish; on the posterior margin the hair is dense and long; black, except between the termination of the sixth and seventh veins, and at the tip, where it is white. Body black, not shining; abdomen and scutellum clothed with long white hair, the dorsum of the thorax apparently with black and white hair; antennæ not longer than twice the greatest diameter of the head, slender, light yellow; the basal joints dilated, black, and densely clothed with black hair; the following joints elongate, slender, with a row of about six slender, successively longer, erect, straight, fine bristles on the upper margin. Legs yellowish, the tarsi blackish; tibiæ and tarsi, or at least the two anterior pairs, ciliate, with long black hair; that on the tibiæ on both sides

art
P. Bof

distally; that on the tarsi chiefly on the basal joint and on the posterior and dorsal margin. Length 2.2 mm.; of wings, 2.75 mm.

A single male specimen from Watkins Glen, N. Y. Mrs. A. T. Slosson.

A female specimen collected with this male differs so much that I at first thought it represented a distinct species, and it is not at all unlikely that it does. The hair on the wings is not as long; there are no white spots at the tips of the longitudinal veins; the hair of the body is white throughout; the basal joints of the antennæ are but little dilated and have white hair; the legs are wanting.

***Psychoda alternata* Say.**

This species is easily recognizable. I have specimens from Connecticut, Michigan, Dakota, Tennessee and Kansas. I am not sure but that specimens from the West Indies are of the same species.

I HAVE lately discovered that *Meromacrus* Rondani (Esam. di. var. sp. d'Ins. Bras. p. 10, 1848) is quite identical with *Pteroptila* Loew (1845).⁶ There is no excuse, either for the proposal of the name by Loew, or the failure to recognize the identity by myself, sooner. Our species should be known as *Meromacrus* in the future.—S. W. WILLISTON, Lawrence, Kans.

