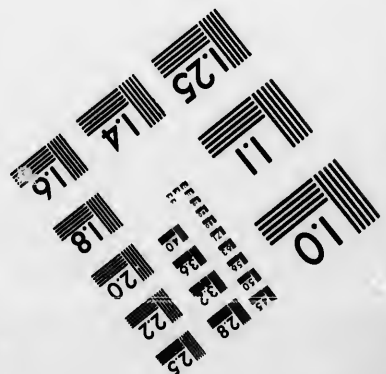
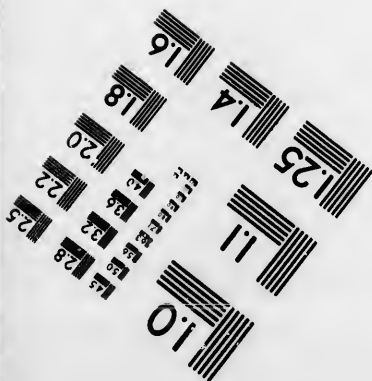
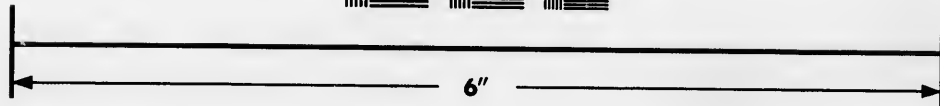
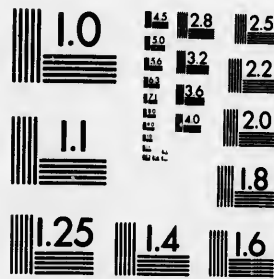


**IMAGE EVALUATION
TEST TARGET (MT-3)**



**Photographic
Sciences
Corporation**

23 WEST MAIN STREET
WEBSTER, N.Y. 14580
(716) 872-4503

**CIHM
Microfiche
Series
(Monographs)**

**ICMH
Collection de
microfiches
(monographies)**



Canadian Institute for Historical Microreproductions / Institut canadien de microreproductions historiques

© 1993

The copy filmed here has been reproduced thanks to the generosity of:

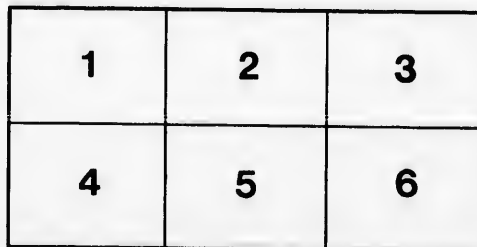
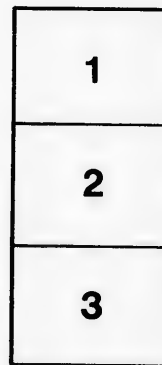
National Library of Canada

The images appearing here are the best quality possible considering the condition and legibility of the original copy and in keeping with the filming contract specifications.

Original copies in printed paper covers are filmed beginning with the front cover and ending on the last page with a printed or illustrated impression, or the back cover when appropriate. All other original copies are filmed beginning on the first page with a printed or illustrated impression, and ending on the last page with a printed or illustrated impression.

The last recorded frame on each microfiche shall contain the symbol → (meaning "CONTINUED"), or the symbol ▼ (meaning "END"), whichever applies.

Maps, plates, charts, etc., may be filmed at different reduction ratios. Those too large to be entirely included in one exposure are filmed beginning in the upper left hand corner, left to right and top to bottom, as many frames as required. The following diagrams illustrate the method:



L'exemplaire filmé fut reproduit grâce à la générosité de:

Bibliothèque nationale du Canada

Les images suivantes ont été reproduites avec le plus grand soin, compte tenu de la condition et de la netteté de l'exemplaire filmé, et en conformité avec les conditions du contrat de filmage.

Les exemplaires originaux dont la couverture en papier est imprimée sont filmés en commençant par le premier plat et en terminant soit par la dernière page qui comporte une empreinte d'impression ou d'illustration, soit par le second plat, selon le cas. Tous les autres exemplaires originaux sont filmés en commençant par la première page qui comporte une empreinte d'impression ou d'illustration et en terminant par la dernière page qui comporte une telle empreinte.

Un des symboles suivants apparaîtra sur la dernière image de chaque microfiche, selon le cas: le symbole → signifie "A SUIVRE", le symbole ▼ signifie "FIN".

Les cartes, planches, tableaux, etc., peuvent être filmés à des taux de réduction différents. Lorsque le document est trop grand pour être reproduit en un seul cliché, il est filmé à partir de l'angle supérieur gauche, de gauche à droite, et de haut en bas, en prenant le nombre d'images nécessaire. Les diagrammes suivants illustrent la méthode.

qu'il
cet
t de vue
ge
ation
ués



FC 234b

.37

H36

本 本 本

ENTRANCE TO CITADEL. BEDFORD BASIN. GOTTINGEN BE BAPTIST CH.

ST PATRICK'S CHURCH. CH. OF THE REDEEMER. ROUNDH. ARMY HOSPITAL. GARRISON CH.



BIRDS EYE VIEW

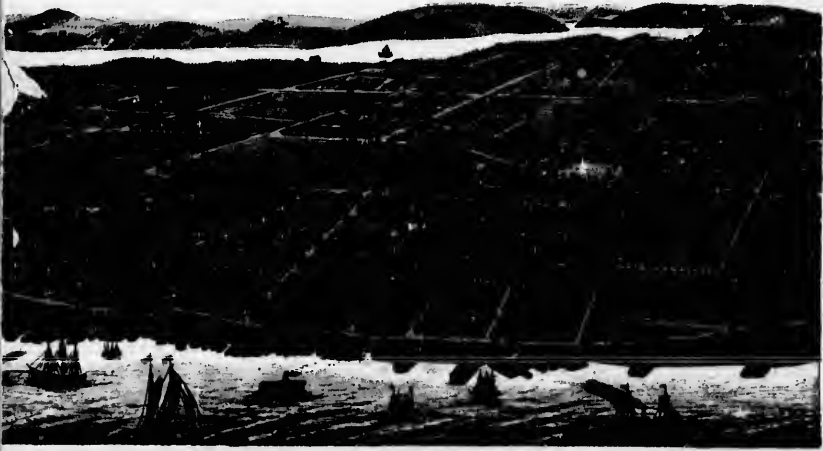
W

35⁰⁰

BARRACKS. TRINITY CH. FIRST LAKE.
TEMPERANCE HALL. DARTMOUTH. BRUNSWICK STREET. DARTMOUTH.



HALIFAX FROM



W OF HALIFAX .

FC 2
.37
H36

HALMERS CH.
DESIGN HOUSE.

MT. HOPE INSANE ASYLUM. ST. PAULS CH.
POST OFFICE. PROVINCIAL BLDG.
TOWN CLOCK CENTRAL ENGINEHOUSE. YMCA. BLDG.



THE CITADEL



INTERCOLONIAL RAILWAY STATION.

PAUL CH.

Y.M.C.A. BLDG.

GEORGE ISLAND. ST. MATTHEW CH.
MASON HALL. ST. MARY'S CATHEDRAL. GRAFTON ST. MATH. CH. MC. NABE ISLAND.
CITY DISPENSARY. ACADEMY OF MUSIC. HIGH SCHOOL. SUPREME COURT HOUSE.

LIGHT HOUSE.



YOUNG MENS CHRISTIAN ASSOCIATION BUILDING.



ACADEMY OF MUSIC.

FC
.3
H34
AA



HALIFAX HOTEL.



ASYLUM FOR BLIND.



DEAF AND DUMB INSTITUTE.



MILITARY BARRACKS.

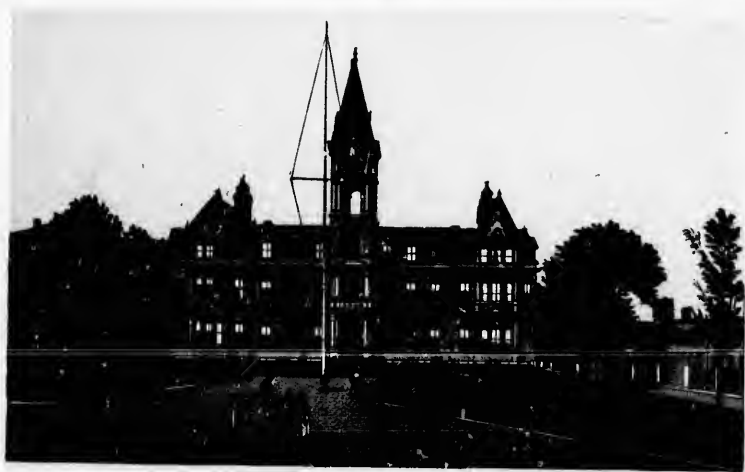
FC
.3
H3
A A



POST OFFICE & CUSTOM HOUSE.



MASONIC HALL.



NEW CITY HALL



EXHIBITION BUILDING.



SUPERIOR COURT HOUSE.



THEOLOGICAL HALL.

FC
.3
H36
△△:



WAVERLY HOUSE.

WAVERLY HOUSE.



GARRISON CHAPEL.



ST. MATTHEWS CHURCH



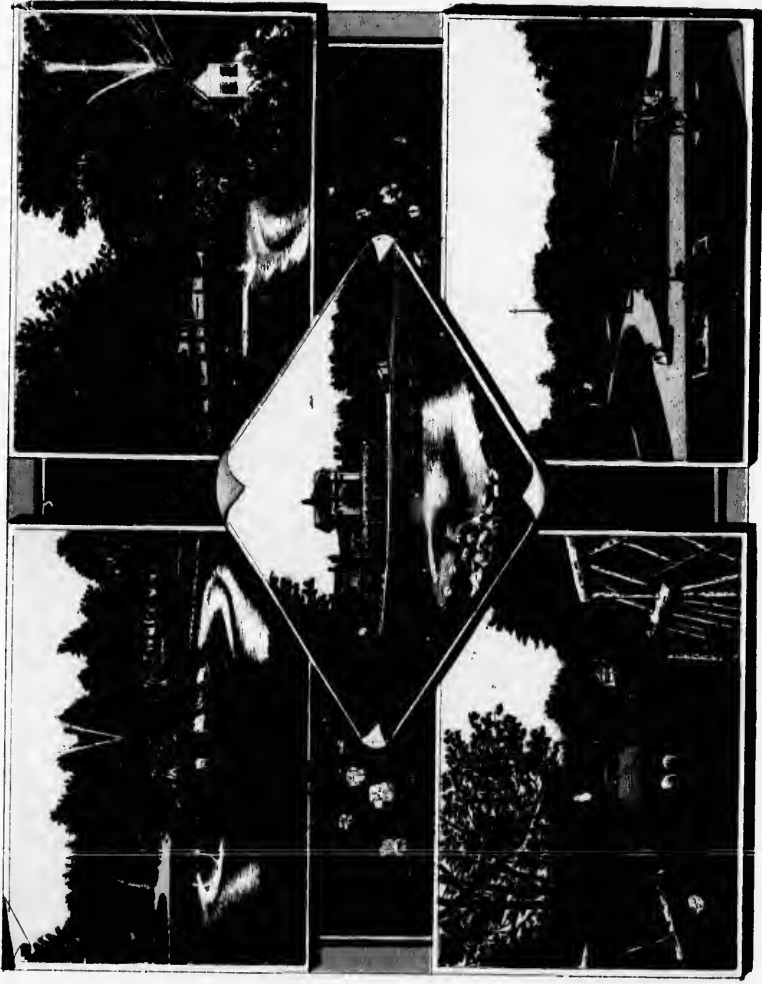
ST MARYS CATHEDRAL.



WM.CHURCH

CHURCHES.

12
H2
A2

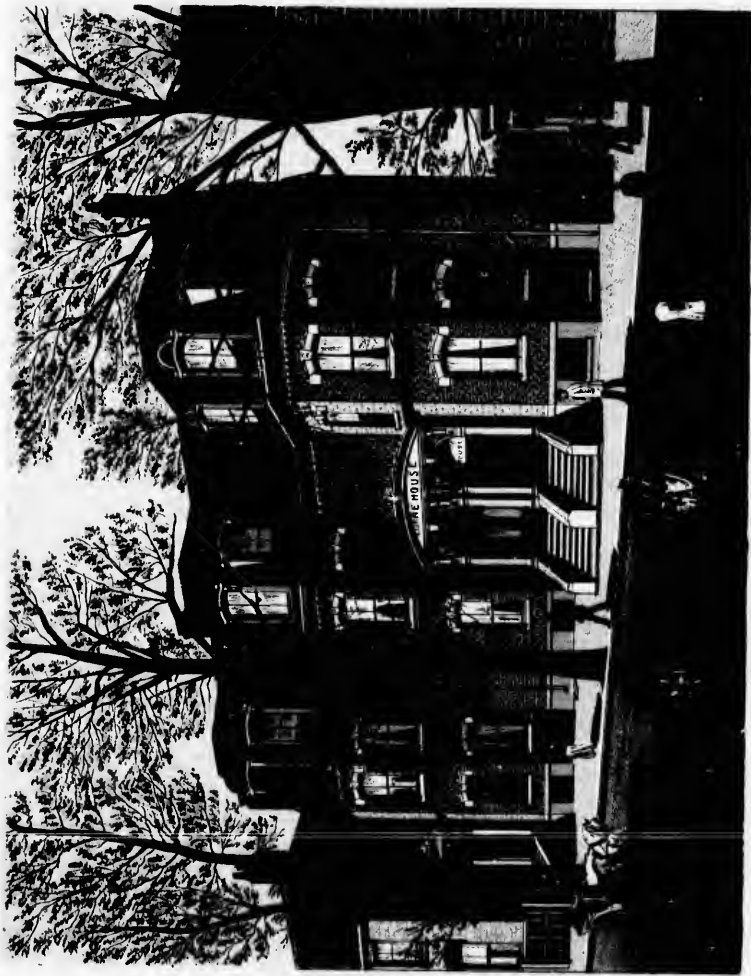


PUBLIC GARDENS.

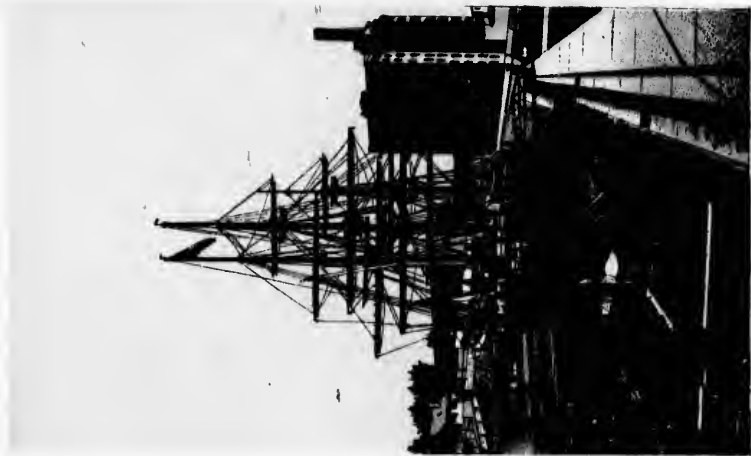




PUBLIC GARDENS.



LORNE HOUSE.



H. M. S. CANADA IN DOCK.



FIRE STATION.



YOUNG LADIES COLLEGE.

H. M. S. CANADA IN DOCK.



RICHMOND-BEDFORD BASIN.



POINT PLEASANT DRIVE.

YOUNG LADIES COLLEGE.



HALIFAX GRAIN ELEVATOR.



BANK OF NOVA SCOTIA.

*Manufactured by Geo. Fry & Co., Glasgow, & N. Kelly, Stn. Portland, Me.
Published by the Canada Railway Veneer Limited, Montreal, P. Q.*

