

**CIHM  
Microfiche  
Series  
(Monographs)**

**ICMH  
Collection de  
microfiches  
(monographies)**



**Canadian Institute for Historical Microreproductions / Institut canadien de microreproductions historiques**

**© 1995**

Technical and Bibliographic Notes / Notes techniques et bibliographiques

The Institute has attempted to obtain the best original copy available for filming. Features of this copy which may be bibliographically unique, which may alter any of the images in the reproduction, or which may significantly change the usual method of filming, are checked below.

L'Institut a microfilmé le meilleur exemplaire qu'il lui a été possible de se procurer. Les détails de cet exemplaire qui sont peut-être uniques du point de vue bibliographique, qui peuvent modifier une image reproduite, ou qui peuvent exiger une modification dans la méthode normale de filmage sont indiqués ci-dessous.

Coloured covers/  
Couverture de couleur

Coloured pages/  
Pages de couleur

Covers damaged/  
Couverture endommagée

Pages damaged/  
Pages endommagées

Covers restored and/or laminated/  
Couverture restaurée et/ou pelliculée

Pages restored and/or laminated/  
Pages restaurées et/ou pelliculées

Cover title missing/  
La titre de couverture manque

Pages discoloured, stained or foxed/  
Pages décolorées, tachetées ou piquées

Coloured maps/  
Cartes géographiques en couleur

Pages detached/  
Pages détachées

Coloured ink (i.e. other than blue or black)/  
Encre de couleur (i.e. autre que bleue ou noire)

Showthrough/  
Transparence

Coloured plates and/or illustrations/  
Planches et/ou illustrations en couleur

Quality of print varies/  
Qualité inégale de l'impression

Bound with other material/  
Relié avec d'autres documents

Continuous pagination/  
Pagination continue

Tight binding may cause shadows or distortion along interior margin/  
La reliure serrée peut causer de l'ombre ou de la distorsion le long de la marge intérieure

Includes index(es)/  
Comprend un (des) index

Title on header taken from: /  
Le titre de l'an-tête provient:

Blank leaves added during restoration may appear within the text. Whenever possible, these have been omitted from filming/  
Il se peut que certaines pages blanches ajoutées lors d'une restauration apparaissent dans le texte, mais, lorsque cela était possible, ces pages n'ont pas été filmées.

Title page of issue/  
Page de titre de la livraison

Caption of issue/  
Titre de départ de la livraison

Masthead/  
Générique (périodiques) de la livraison

Additional comments: /  
Commentaires supplémentaires:

Part of pages 101-102 is missing.

This item is filmed at the reduction ratio checked below /  
Ce document est filmé au taux de réduction indiqué ci-dessous.

10X	14X	18X	22X	26X	30X
<input type="checkbox"/>	<input type="checkbox"/>	<input type="checkbox"/>	<input checked="" type="checkbox"/>	<input type="checkbox"/>	<input type="checkbox"/>
12X	16X	20X	24X	28X	32X

The copy filmed here has been reproduced thanks to the generosity of:

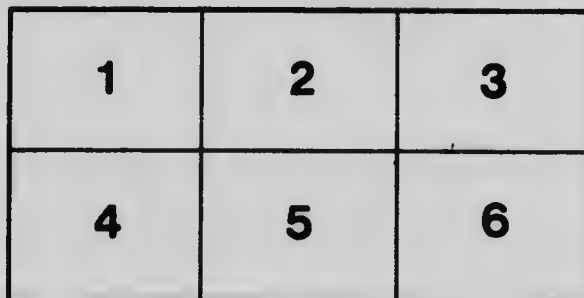
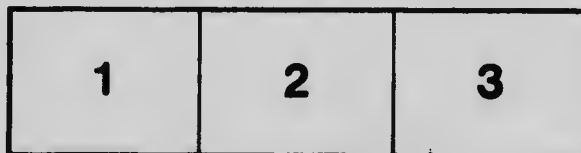
University of Toronto Archives

The images appearing here are the best quality possible considering the condition and legibility of the original copy and in keeping with the filming contract specifications.

Original copies in printed paper covers are filmed beginning with the front cover and ending on the last page with a printed or illustrated impression, or the back cover when appropriate. All other original copies are filmed beginning on the first page with a printed or illustrated impression, and ending on the last page with a printed or illustrated impression.

The last recorded frame on each microfiche shall contain the symbol  $\rightarrow$  (meaning "CONTINUED"), or the symbol  $\nabla$  (meaning "END"), whichever applies.

Maps, plates, charts, etc., may be filmed at different reduction ratios. Those too large to be entirely included in one exposure are filmed beginning in the upper left hand corner, left to right and top to bottom, as many frames as required. The following diagrams illustrate the method:



L'exemplaire filmé fut reproduit grâce à la générosité de:

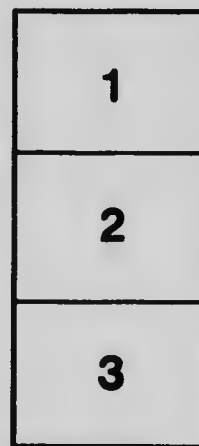
University of Toronto Archives

Les images suivantes ont été reproduites avec le plus grand soin, compte tenu de la condition et de la netteté de l'exemplaire filmé, et en conformité avec les conditions du contrat de filmage.

Les exemplaires originaux dont la couverture en papier est imprimée sont filmés en commençant par le premier plat et en terminant soit par la dernière page qui comporte une empreinte d'impression ou d'illustration, soit par le second plat, selon le cas. Tous les autres exemplaires originaux sont filmés en commençant par la première page qui comporte une empreinte d'impression ou d'illustration et en terminant par la dernière page qui comporte une telle empreinte.

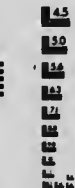
Un des symboles suivants apparaîtra sur la dernière image de chaque microfiche, selon le cas: le symbole  $\rightarrow$  signifie "A SUIVRE", le symbole  $\nabla$  signifie "FIN".

Les cartes, planches, tableaux, etc., peuvent être filmés à des taux de réduction différents. Lorsque le document est trop grand pour être reproduit en un seul cliché, il est filmé à partir de l'angle supérieur gauche, de gauche à droite, et de haut en bas, en prenant le nombre d'images nécessaire. Les diagrammes suivants illustrent la méthode.



# MICROCOPY RESOLUTION TEST CHART

(ANSI and ISO TEST CHART No. 2)



**APPLIED IMAGE Inc**

1653 East Main Street  
Rochester, New York 14609 USA  
(716) 482 - 0300 - Phone  
(716) 288 - 5989 - Fax

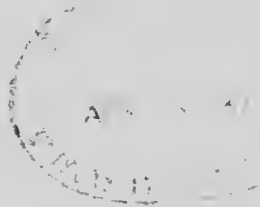
UNIVERSITY OF TORONTO  
STUDIES

PAPERS FROM THE CHEMICAL  
LABORATORIES

No. 43: NUMERICAL VALUES OF CERTAIN FUNCTIONS  
INVOLVING  $e^{-n}$

BY W. LASH MILLER AND T. R. ROSEBRUGH

(REPRINTED FROM THE TRANSACTIONS OF THE ROYAL SOCIETY OF CANADA, VOL. IX)



THE UNIVERSITY LIBRARY: PUBLISHED BY  
THE LIBRARIAN, 1904

COMMITTEE OF MANAGEMENT

---

*Chairman:* JAMES LOUDON, LL.D.,  
President of the University

PROFESSOR W. J. ALEXANDER, PH.D.

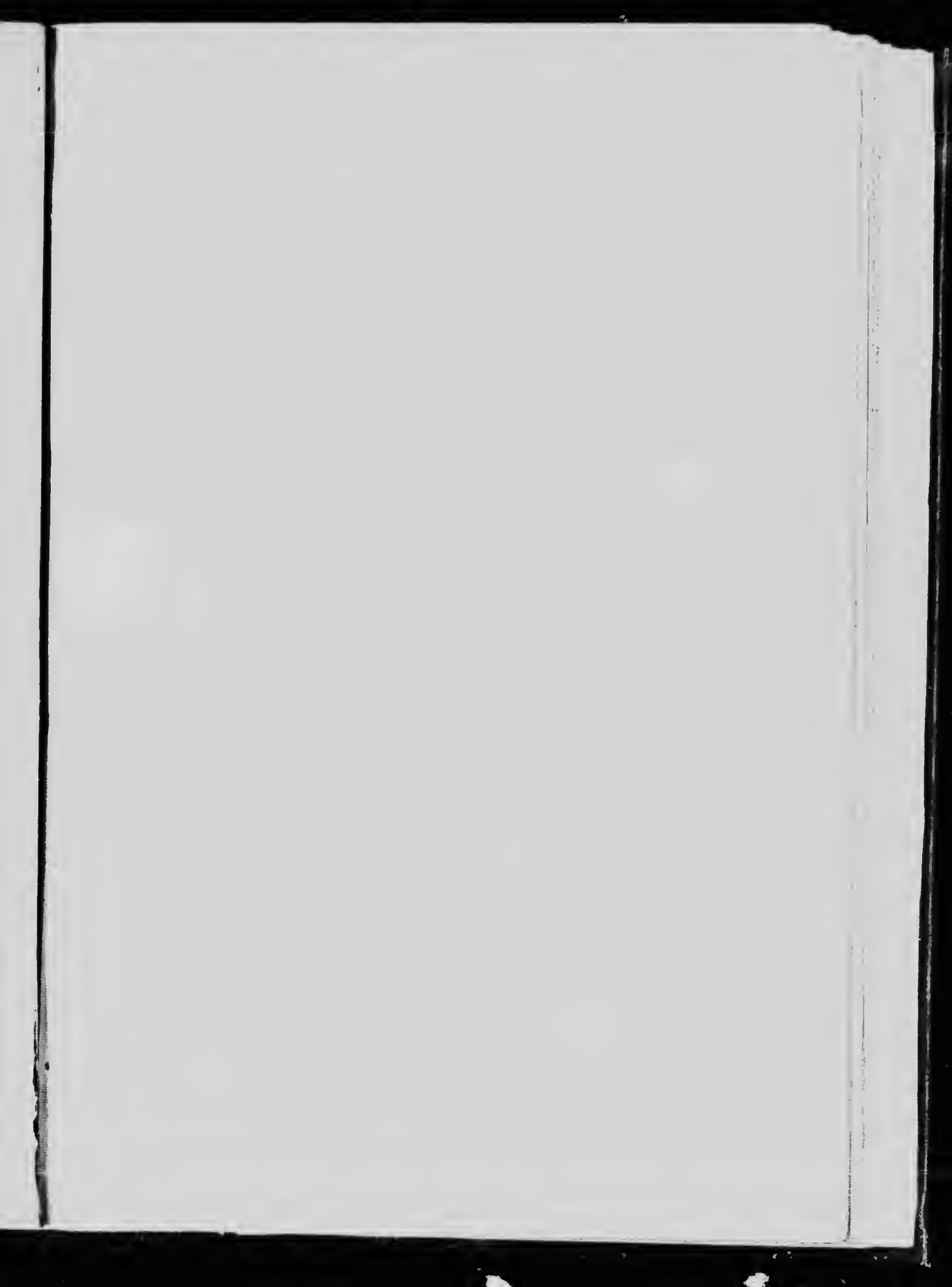
PROFESSOR PELHAM EDGAR, PH.D.

PRINCIPAL J. GALBRAITH, M.A.

PROFESSOR R. RAMSAY WRIGHT, M.A., B.Sc.

PROFESSOR GEORGE M. WRONG, M.A.

*General Editor:* H. H. LANGTON, B.A.,  
Librarian of the University



NUMERICAL VALUES  
OF CERTAIN FUNCTIONS  
INVOLVING  $e^{-x}$

Owing to defective type, some figures in the following decimals are not distinct.

Page 83, $x=.173$ , second integral	.343 044 342
" 87, " .379, fifth	" .986 305 616
" 89, " .457, fifth	" .977 326 592
" 89, " .486, fifth	" .973 302 994
" 89, " .494, first	" .668 065 730
" 91, " .555, fourth	" .892 682 366
" 93, " .676, second	" .391 304 134
" 95, " .793, first	" .256 039 989
" 107, " 1.23, .237 636 242	

---

ERRATA

Page 73 and 74, Eqns. 6, 7, 8, 9, for K read  $K q^{1-a}$

- " 80, footline, for  $\int \frac{e^{-x}}{x^2} dx$  read  $\int_x^\infty \frac{e^{-x}}{x^2} dx$
- " 80,  $x=.001$ , third integral for .999 000 500 read 0.999 000 500
- " 80,  $x=.001$ , fourth " " .999 999 500 " 0.999 999 500
- " 100,  $x=1.31$ , fourth " " .632 284 330 " .623 284 330
- " 106,  $x=.910$ , for .442 334 314 read .442 334 312



X.—Numerical values of certain functions involving  $e^{-x}$ .

By W. LASH MILLER, Ph.D., and T. R. ROSEBRUGH, M.A.

(Read May 19, 1903.)

In dealing with certain problems of Chemical Kinetics,<sup>1</sup> equations of the form

$$k du = \frac{dz}{(A-z)^\alpha (B-z)^\beta (C-z)^\gamma \dots} \quad (1)$$

are commonly met with. The tables published herewith were first computed (to a less number of decimal places) in order to furnish a ready means of integrating them.

In Equation (1),  $A, B, C, \dots$  are positive constants, arranged in order of magnitude,  $A$  being the smallest;  $\alpha, \beta, \gamma, \dots$  are any real quantities; and  $z$  may range from 0 to any value less than  $A$ .

In Equation (1) making the substitution

$$Ay = A - z, \quad (2)$$

there follows

$$K du = \frac{-dy}{y^\alpha (1+by)^\beta (1+cy)^\gamma \dots} \quad (3)$$

in which

$$b = \frac{A}{B-A}, \quad c = \frac{A}{C-A}, \text{ etc.}$$

$$K = k A^{\alpha-1} (B-A)^\beta (C-A)^\gamma \dots$$

Equation (3) may be written

$$K du = \frac{-dy}{y^\alpha} \cdot e^{-qy + ry^2 - sy^3 + ty^4 - \dots} \quad (4)$$

where  $q = \sum \beta b$ ,  $r = \frac{1}{2} \sum \beta b^2$ ,  $s = \frac{1}{6} \sum \beta b^3$ ,  $t = \frac{1}{24} \sum \beta b^4$ .

If  $b, c, \dots$  are small ( $y$  being obviously less than unity), the series in the exponent of  $e$  converges rapidly, and Equation (4) may be (approximately) replaced by

$$K du = \frac{-dy}{y^\alpha} \cdot e^{-qy} (1 + ry^2 + \frac{1}{2} r^2 y^4 - sy^3 + ty^4) \quad (5)$$

Writing  $x$  for  $qy$  and integrating (with the lower limit  $u = 0, z = 0$ )

$$Ku = -\int e^{-x} x^{-\alpha} dx - \frac{r}{q^2} \int e^{-x} x^{2-\alpha} dx + \frac{s}{q^3} \int e^{-x} x^{3-\alpha} dx - \frac{t}{q^4} + \frac{1}{2} \frac{r^2}{q^4} \int e^{-x} x^4 dx \quad (6)$$

<sup>1</sup> The subject is more fully discussed in a paper which will shortly be published under the title: T. R. Rosebrugh and W. Lash Miller—A convenient integral form of the Equations of Chemical Kinetics.

The cases where  $\alpha = 0$ ,  $\alpha = 1$ , and  $\alpha = 2$ , are of particular importance in the class of problems already referred to. Introducing these values Equation (6) becomes<sup>1</sup>

$$\alpha = 0, Ku = -\int e^{-x} dx - \frac{r}{q^2} \int e^{-x} x^2 dx \quad (7)$$

$$\alpha = 1, Ku = -\int \frac{e^{-x}}{x} dx - \frac{r}{q^2} \int e^{-x} x dx + \frac{s}{q^2} \int e^{-x} x^2 dx \quad (8)$$

$$\alpha = 2, Ku = -\int \frac{e^{-x}}{x^2} dx - \frac{r}{q^2} \int e^{-x} dx + \frac{s}{q^2} \int e^{-x} x dx \\ - \frac{t + \frac{1}{2} r^2}{q^4} \int e^{-x} x^2 dx \quad (9)$$

and by means of tables of these integrals computations can be carried out with much less labour than if the method of integration by partial fractions—assuming its applicability—were employed. This is particularly the case when the factors in Equation (1) are numerous, or the exponents large.

The most general form of Equation (1) may be written

$$K du =$$

$$- \frac{dy}{$$

$$y^a (1 + g_1 y + h_1 y^2 + m_1 y^3 + \dots)^b (1 + g_2 y + h_2 y^2 + m_2 y^3 + \dots)^c \dots$$

from which the following values of  $q, r, s, \dots$  may be found

$$q = \sum \beta g; r = \frac{1}{2} \sum \beta g^2 - \sum \beta h; s = \frac{1}{3} \sum \beta g^3 - \sum \beta g h + \sum \beta m$$

As  $\beta, \gamma, \dots$  may be negative, this form includes the cases where factors are contained in the numerator as well as in the denominator. When the indices are fractional, the method here described affords a means of integration where others fail; it is, however, as already stated,

<sup>1</sup> If  $e^x$  be substituted for  $e^{-x}$ , the sign of the variable limit must be reversed, and that of the integral may be affected. Thus:

$$\int_{-x}^{\infty} \frac{e^x}{x^2} dx = - \int_x^{\infty} \frac{e^{-x}}{x^2} dx$$

$$\int_{-x}^{\infty} \frac{e^x}{x} dx = \int_x^{\infty} \frac{e^{-x}}{x} dx$$

$$\int_{-x}^{\infty} e^x dx = - \int_x^{\infty} e^{-x} dx$$

$$\int_{-x}^{\infty} e^x x dx = \int_x^{\infty} e^{-x} x dx$$

$$\int_{-x}^{\infty} e^x x^2 dx = - \int_x^{\infty} e^{-x} x^2 dx$$

subject to the limitation that the series in the exponent of  $e$  must converge rapidly.

Of the integrals

$$\int \frac{e^{-x}}{x^2} dx, \int \frac{e^{-x}}{x} dx, \int e^{-x} dx, \int x e^{-x} dx, \int x^2 e^{-x} dx,$$

The first may be reduced to the second, the so-called "Exponential Integral"  $Ei(-x)$ , and the fourth and fifth to the third, or Exponential Function.

The Exponential Function has been tabulated by Mr. F. W. Newman,<sup>1</sup> from  $x = 0$  to  $x = 37$ , at intervals of .1 to eighteen decimal places (sixteen exact), from  $x = 0$  to  $x = 15.349$  at intervals of .001 to twelve decimal places, from  $x = 15.350$  to  $x = 17.298$  at intervals of .002, and from  $x = 17.300$  to  $x = 27.635$  at intervals of .005 to fourteen decimal places.

Tables of the same function have been published by Mr. J. W. L. Glaisher<sup>2</sup> from  $x = 0.001$  to  $x = 1.000$  at intervals of .001, from  $x = 0.01$  to  $x = 2.00$  at intervals of .01, from  $x = 0.1$  to  $x = 10.0$  at intervals of .1, and from  $x = 1$  to  $x = 500$  at intervals of unity. In every case the first nine significant figures are given.

The Exponential Integral has been tabulated by Mr. J. W. L. Glaisher<sup>3</sup> from  $x = 0$  to  $x = 1.00$  at intervals of .01 to eighteen places, from 1.0 to 5.0 at intervals of .1 to eleven places, and from 6.0 to 15.0 at intervals of unity to eleven places.

For the problems with which we were concerned, these intervals were too wide, we have therefore constructed a table of the descending Exponential Integral from  $x = 0$  to  $x = 1.000$  at intervals of .001, and from  $x = 1.00$  to  $x = 2.00$  at intervals of .01, to nine decimal places.

The other three integrals have not hitherto been tabulated, so far as we are aware.

Values of  $\int_x^\infty e^{-x} dx$ , from  $x = 0$  to  $x = 1.000$  at intervals of .001

(Table I), and from  $x = 1.00$  to  $x = 2.00$  at intervals of .01 (Table II). These are Newman's values of  $e^{-x}$  to the nearest digit in the ninth decimal place.

In his "Tables of the Exponential Function" Glaisher says: "The last figure is therefore in general correctly given to the nearest unit, but it may be in error by a unit where the tenth figure is a 4, 5 or 6." On comparing Glaisher's table with that of Newman five cases were found

<sup>1</sup> Cambridge Phil. Trans., XIII, 145 (1883).

<sup>2</sup> *Ibid.*, XIII, 243.

<sup>3</sup> Phil. Trans., CLX, 367 (1870).

between  $x = 0$  and  $x = 2$  (viz.,  $x = 0.820, 1.28, 1.75, 1.93, 1.99$ ) in which there was a discrepancy of one unit in the ninth decimal place, and the tenth digit was 4 or 5.

There are two others in which the tenth figures are 2 and 8 respectively, viz.:

$x$	Newman	Glaisher
1.55	0 212 247 973 827	0.212 247 973
1.80	0.165 298 888 221	0.165 298 889

In both cases Newman's result was found to be exactly the square of his number for half the value of  $x$ .

Values of  $\frac{e^{-x}}{x}$ , from  $x=0.100$  to  $x=1.000$  at intervals of .001 (Table III), and from  $x = 1.00$  to  $x = 2.00$  at intervals of .01 (Table IV). These were obtained by division from Newman's values of  $e^{-x}$ .

For use in calculating the Exponential Integral the first, second and following differences of the first seven decimal places were taken until they were small enough to be followed readily, these served also to detect errors in the first six places. At the beginning of the table,  $x = 0.100$  to  $x = 0.210$ , the differencing was extended to the whole nine decimal places.

The last six figures of  $\frac{e^{-x}}{x}$  were then multiplied by the corresponding value of  $x$  and the product compared with Newman's value of  $e^{-x}$ , thus eliminating errors in the last three places. This verification was performed on the type-written sheets ready for the printer.

This table was then used in computing  $\int_x^\infty \frac{e^{-x}}{x} dx$  and  $\int_x^\infty \frac{e^{-x}}{x^2} dx$ .

Values of  $\frac{e^{-x}-1}{x}$  from  $x = 0$  to  $x = 0.100$  at intervals of .001 (Table III). By division, from Newman's values of  $e^{-x}$ ; checked by taking the first and second differences on the type-written sheets.

These numbers were used in computing

$$\int_x^\infty \frac{e^{-x}}{x} dx + \log_e x, \text{ and } \int_x^\infty \frac{e^{-x}}{x^2} dx - \frac{1}{x} - \log_e x$$

Values of  $\int_x^\infty \frac{e^{-x}}{x} dx$  from  $x = 0.100$  to  $x = 1.000$  at intervals of .001 (Table I), and from  $x = 1.00$  to  $x = 2.00$  at intervals of .01 (Table II). It was found impossible to obtain these from Glaisher's table by interpolation. The table was consequently built up from the values of  $e^{-x}/x$  by means of the relation

$$\int_x^\infty Ei(-x) = 0.001 (1 + \frac{1}{2} J - \frac{1}{2} J^2 + \frac{1}{24} J^3 - \frac{1}{720} J^4) e^{-x}/x$$

which may be deduced by Taylor's theorem, treating intervals of 0.001 as units.<sup>1</sup>

The computation was carried out with ten places of decimals, and every tenth value was checked by Glaisher's results, and found to agree within a few units in the last place; the tenth place was then rejected. Incidentally the agreement furnishes evidence of the accuracy of Glaisher's Table, at least as far as the ninth decimal place, and of our Table of  $e^{-x}/x$  as far as the seventh.

Following Glaisher,<sup>2</sup> the integration constant

$$\gamma = 0.577\ 215\ 665$$

was adopted, whence  $Ei(-\infty) = 0$ .

Values of  $\int_x^{\infty} \frac{e^{-t}}{t} dt + \log_e x$  from  $x = 0$  to  $x = 0.100$  at intervals of .001 (Table I). As for  $x = 0$ ,  $\int_x^{\infty} \frac{e^{-t}}{t} dt$  becomes infinite, interpolation for low values of  $x$  would be impossible. By adding  $\log_e x$  however, the infinity is removed and this difficulty is avoided,  $\int_x^{\infty} \frac{e^{-t}}{t} dt + \log_e x$  for  $x = 0$  having the value  $-\gamma$ . By subtracting the logarithm,  $\int_x^{\infty} \frac{e^{-t}}{t} dt$  may be obtained.

The values in the Table were computed in the same manner as those of  $\int_x^{\infty} \frac{e^{-t}}{t} dt$ , using  $\frac{e^{-x}-1}{-x}$  in place of  $\frac{e^{-x}}{x}$ , and every tenth was checked against Glaisher's value for  $\int_x^{\infty} \frac{e^{-t}}{t} dt$ . The numbers so obtained are *negative*.

For example :

$$\text{for } x = 0.050, \int_x^{\infty} \frac{e^{-t}}{t} dt + \log_e x = -0.527\ 833\ 785$$

$$\begin{aligned} \text{hence } \int_x^{\infty} \frac{e^{-t}}{t} dt &= -0.527\ 833\ 785 - \log_e 0.050 \\ &= -0.527\ 833\ 785 + 2.995\ 732\ 274 \\ &= 2.467\ 898\ 489 \end{aligned}$$

Values of  $\int_x^{\infty} \frac{e^{-t}}{t^2} dt$  from  $x = 0.100$  to  $x = 1.000$  at intervals of .100

<sup>1</sup> The coefficients are those of the powers of  $x$  in the expansion of  $\log_e(1-x)$ . See: Boole, Finite Differences.

<sup>2</sup> In Glaisher's Table the limits are the inverse of ours, hence the minus sign prefixed to his numbers.

(Table I), and from  $x = 1.00$  to  $x = 2.00$  at intervals of .01 (Table II). Obtained by subtraction

$$\int_x^{\infty} \frac{e^{-x}}{x^2} dx = \frac{e^{-x}}{x} - \int_x^{\infty} \frac{e^{-x}}{x} dx$$

and checked by addition.

Values of  $\int_x^{\infty} \frac{e^{-x}}{x^2} dx - \frac{1}{x} - \log_e x$  from  $x = 0$  to  $x = 0.100$  at intervals of .001 (Table I). These numbers supplement the values of  $\int_x^{\infty} \frac{e^{-x}}{x^2} dx$  in the same way that  $\int_x^{\infty} \frac{e^{-x}}{x} dx + \log_e x$  supplements those of  $\int_x^{\infty} \frac{e^{-x}}{x} dx$ . They were obtained by subtraction,

$$\int_x^{\infty} \frac{e^{-x}}{x^2} dx - \frac{1}{x} - \log_e x = \frac{e^{-x}-1}{x} - \left( \int_x^{\infty} \frac{e^{-x}}{x} dx + \log_e x \right)$$

and checked by addition. As in the case of  $\int_x^{\infty} \frac{e^{-x}}{x} dx + \log_e x$  the numbers tabulated are negative in sign. For example: for  $x = 0.001$

$$\int_x^{\infty} \frac{e^{-x}}{x^2} dx - \frac{1}{x} - \log_e x = -0.423\ 283\ 252$$

$$\begin{aligned} \text{hence } \int_x^{\infty} \frac{e^{-x}}{x^2} dx &= -0.423\ 283\ 252 + 1000 - 6.907\ 755\ 279 \\ &= 992.668\ 961\ 469 \end{aligned}$$

Values of  $\int_x^{\infty} x e^{-x} dx$  from  $x = 0$  to  $x = 1.000$  at intervals of .001 (Table I), and from  $x = 1.00$  to  $x = 2.00$  at intervals of .01 (Table II). Prepared from Newman's values of  $e^{-x}$  by multiplication, according to the formula

$$\int_x^{\infty} x e^{-x} dx = (1+x) e^{-x}$$

and checked by taking first and second differences from  $x = 0$  to  $x = 1$ , and first, second, and third differences from  $x = 1$  to  $x = 2$ , on the type-written sheets.

Values of  $\int_x^{\infty} x^2 e^{-x} dx$  from  $x=0$  to  $x = 1.000$  at intervals of .001 (Table I), and from  $x = 1.00$  to  $x = 2.00$  at intervals of .01 (Table II) from Newman's Table of  $e^{-x}$  by multiplication,

$$\int_x^{\infty} x^2 e^{-x} dx = \left\{ 1 + (1+x)^2 \right\} e^{-x}$$

checked by first and second differences between  $x = 0$  and  $x = 1.000$  and by first, second, and third differences from  $x = 1.00$  to  $x = 2.00$  on the type-written sheets.

Our thanks are due to Mr. R. F. Stupart, Superintendent of the Meteorological Service, for the use of a 8-16 place arithmometer, which together with a 6-12 place arithmometer and a 9 place comptometer from the School of Practical Science, were of great assistance in computing the tables.

TABLES.

TABLE I.  $x = 0$  to  $x = 0.100$  at intervals of .001, numerical values of

$$\int_x^1 \frac{e^{-x}}{x^2} dx - \frac{1}{x} - \log_e x, \int_x^1 \frac{e^{-x}}{x} dx + \log_e x, \int_x^1 e^{-x} dx, \int_x^1 x e^{-x} dx, \text{ and } \int_x^1 x^2 e^{-x} dx.$$

$x = 0.100$  to  $x = 1.000$  at intervals of .001, numerical values of

$$\int_x^1 \frac{e^{-x}}{x^2} dx, \int_x^1 \frac{e^{-x}}{x} dx, \int_x^1 e^{-x} dx, \int_x^1 x e^{-x} dx, \text{ and } \int_x^1 x^2 e^{-x} dx.$$

TABLE II.  $x = 1.00$  to  $x = 2.00$  at intervals of .01, numerical values of

$$\int_x^2 \frac{e^{-x}}{x^2} dx, \int_x^2 \frac{e^{-x}}{x} dx, \int_x^2 e^{-x} dx, \int_x^2 x e^{-x} dx, \text{ and } \int_x^2 x^2 e^{-x} dx.$$

TABLE III.  $x = 0$  to  $x = 0.100$  at intervals of .001, numerical values of  $\frac{e^{-x} - 1}{x}$ .

$x = 0.100$  to  $x = 1.000$  at intervals of .001, numerical values of  $\frac{e^{-x}}{x}$ .

TABLE IV.  $x = 1.00$  to  $x = 2.00$  at intervals of .01, numerical values of  $\frac{e^{-x}}{x}$ .

TABLE I.

$x$	$-A$	$-B$	$\int_x^\infty e^{-x} dx$	$\int_x^\infty x e^{-x} dx$	$\int_x^\infty x^2 e^{-x} dx$
.000	0.422 784 335	0.577 215 665	1.000 000 000	1.000 000 000	2.000 000 000
.001	.423 283 252	.576 216 915	.999 000 500	.999 999 500	.999 000 000
.002	.423 784 002	.575 216 665	.998 001 999	.999 998 003	1.999 999 997
.003	.424 283 585	.574 217 914	.997 004 496	.999 995 509	.999 999 991
.004	.424 783 002	.573 219 682	.996 007 989	.999 992 021	.999 999 979
.005	.425 282 253	.572 221 908	.995 012 479	.999 987 542	.999 999 958
.006	.425 781 338	.571 224 653	.994 017 064	.999 982 071	.999 999 928
.007	.426 280 257	.570 227 896	.993 024 443	.999 975 613	.999 999 886
.008	.426 779 008	.569 231 637	.992 031 915	.999 968 170	.999 999 830
.009	.427 277 595	.568 235 875	.991 040 379	.999 959 742	.999 999 759
.010	.427 776 015	.567 240 610	.990 049 834	.999 950 332	.999 999 669
.011	.428 274 269	.566 245 842	.989 060 279	.999 940 942	.999 999 560
.012	.428 772 358	.565 251 570	.988 071 713	.999 931 573	.999 999 429
.013	.429 270 282	.564 257 791	.987 084 135	.999 922 229	.999 999 275
.014	.429 768 040	.563 264 513	.986 097 544	.999 912 910	.999 999 095
.015	.430 265 632	.562 271 728	.985 111 940	.999 898 619	.999 998 888
.016	.430 763 059	.561 279 438	.984 127 320	.999 883 357	.999 998 651
.017	.431 260 320	.560 287 643	.983 143 685	.999 867 127	.999 998 383
.018	.431 757 416	.559 296 342	.982 161 032	.999 849 934	.999 998 082
.019	.432 254 347	.558 305 535	.981 179 362	.999 831 770	.999 997 746
.020	.432 751 113	.557 315 222	.980 198 673	.999 802 647	.999 997 373
.021	.433 247 713	.556 325 403	.979 218 065	.999 782 563	.999 996 961
.022	.433 744 149	.555 336 076	.978 238 535	.999 761 520	.999 996 509
.023	.434 240 426	.554 347 242	.977 260 484	.999 739 521	.999 996 014
.024	.434 736 526	.553 358 901	.976 285 710	.999 717 567	.999 995 474
.025	.435 232 468	.552 371 051	.975 306 912	.999 692 660	.999 994 888
.026	.435 728 215	.551 383 693	.974 333 090	.999 667 802	.999 994 254
.027	.436 223 857	.550 396 827	.973 361 242	.999 641 994	.999 993 570
.028	.436 719 305	.549 410 452	.972 388 367	.999 615 241	.999 992 835
.029	.437 214 589	.548 424 567	.971 416 464	.999 587 511	.999 992 045
.030	.437 709 709	.547 439 173	.970 445 534	.999 558 900	.999 991 200
.031	.438 204 663	.546 454 270	.969 475 573	.999 529 316	.999 990 299
.032	.438 699 455	.545 469 855	.968 506 582	.999 498 793	.999 989 338
.033	.439 194 081	.544 485 931	.967 538 560	.999 467 332	.999 988 314
.034	.439 688 545	.543 502 495	.966 571 505	.999 434 936	.999 987 228
.035	.440 182 844	.542 519 549	.965 605 416	.999 401 606	.999 986 078
.036	.440 676 980	.541 537 090	.964 640 293	.999 367 341	.999 984 862
.037	.441 170 952	.540 555 129	.963 676 135	.999 332 152	.999 983 577
.038	.441 664 760	.539 573 638	.962 712 941	.999 296 032	.999 982 223
.039	.442 158 403	.538 592 643	.961 750 709	.999 258 987	.999 980 796
.040	.442 651 885	.537 612 136	.960 789 439	.999 221 017	.999 979 297
.041	.443 145 203	.536 632 115	.959 829 130	.999 182 124	.999 977 721
.042	.443 638 358	.535 652 581	.958 869 781	.999 142 311	.999 976 069
.043	.444 131 349	.534 673 533	.957 911 390	.999 101 580	.999 974 338
.044	.444 624 177	.533 694 971	.956 953 957	.999 059 932	.999 972 526
.045	.445 116 842	.532 716 895	.955 997 482	.999 017 368	.999 970 652
.046	.445 609 344	.531 739 304	.955 041 962	.998 973 892	.999 968 654
.047	.446 101 684	.530 762 197	.954 087 398	.998 929 505	.999 966 590
.048	.446 593 860	.529 785 576	.953 133 787	.998 884 209	.999 964 438
.049	.447 085 872	.528 809 438	.952 181 130	.998 838 605	.999 962 197
.050	.447 577 725	.527 833 785	.951 229 425	.998 790 896	.999 959 865

$$A = \int \frac{e^{-x}}{x^2} dx - \frac{1}{x} - \log_e x; \quad B = \int \frac{x^{-x}}{x} dx + \log_e x$$



TABLE 1.

$x$	$-A$	$-B$	$\int_x^{\infty} e^{-x} dx$	$\int_x^{\infty} xe^{-x} dx$	$\int_x^{\infty} x^2 e^{-x} dx$
.050	0.447 577 725	0.527 833 785	0.951 229 425	0.998 790 806	1.000 059 865
.051	.448 000 413	.526 858 016	.950 278 671	.998 742 883	.999 957 440
.052	.448 500 929	.525 883 939	.949 328 867	.998 693 968	.999 954 921
.053	.449 052 303	.524 909 726	.948 380 012	.998 644 153	.999 952 306
.054	.449 543 504	.523 936 005	.947 432 107	.998 593 440	.999 949 593
.055	.450 034 544	.522 962 766	.946 485 148	.998 541 831	.999 946 780
.056	.450 525 421	.521 990 010	.945 539 136	.998 489 328	.999 943 866
.057	.451 016 136	.521 017 735	.944 594 069	.998 435 930	.999 940 849
.058	.451 506 688	.520 045 942	.943 649 047	.998 381 644	.999 937 727
.059	.451 997 079	.519 074 630	.942 706 769	.998 326 469	.999 934 499
.060	.452 487 308	.518 103 799	.941 764 534	.998 270 406	.999 931 164
.061	.452 977 375	.517 133 448	.940 823 240	.998 213 457	.999 927 718
.062	.453 467 281	.516 163 577	.939 882 887	.998 155 626	.999 924 161
.063	.453 957 025	.515 194 186	.938 943 474	.998 096 912	.999 920 492
.064	.454 446 608	.514 225 274	.938 005 900	.998 037 319	.999 916 707
.065	.454 936 029	.513 256 842	.937 067 463	.997 976 818	.999 912 807
.066	.455 425 288	.512 288 886	.936 130 864	.997 915 501	.999 908 789
.067	.455 914 387	.511 321 411	.935 195 201	.997 853 280	.999 904 651
.068	.456 403 325	.510 354 417	.934 260 474	.997 790 186	.999 900 392
.069	.456 892 101	.509 387 898	.933 326 680	.997 726 220	.999 896 010
.070	.457 380 716	.508 421 856	.932 393 820	.997 661 367	.999 891 504
.071	.457 869 170	.507 456 293	.931 461 892	.997 595 686	.999 886 872
.072	.458 357 463	.506 491 206	.930 530 896	.997 529 120	.999 882 113
.073	.458 845 596	.505 526 595	.929 600 830	.997 461 691	.999 877 224
.074	.459 333 567	.504 562 461	.928 671 694	.997 393 318	.999 872 205
.075	.459 821 371	.503 598 803	.927 743 486	.997 324 248	.999 867 053
.076	.460 309 030	.502 635 621	.926 816 207	.997 254 238	.999 861 767
.077	.460 796 520	.501 672 914	.925 889 854	.997 183 372	.999 856 346
.078	.461 283 840	.500 710 682	.924 964 427	.997 111 652	.999 850 787
.079	.461 771 019	.499 748 925	.924 039 924	.997 039 078	.999 845 090
.080	.462 258 028	.498 787 642	.923 116 346	.996 965 654	.999 839 253
.081	.462 744 878	.497 826 833	.922 195 601	.996 891 380	.999 833 274
.082	.463 231 537	.496 866 498	.921 271 959	.996 816 259	.999 827 151
.083	.463 718 095	.495 906 637	.920 351 147	.996 740 292	.999 820 884
.084	.464 204 464	.494 947 249	.919 431 256	.996 663 482	.999 814 470
.085	.464 690 674	.493 988 333	.918 512 284	.996 585 823	.999 807 908
.086	.465 176 723	.493 029 891	.917 594 231	.996 507 325	.999 801 197
.087	.465 662 613	.492 071 920	.916 677 006	.996 428 003	.999 794 335
.088	.466 148 344	.491 114 421	.915 760 877	.996 347 834	.999 787 320
.089	.466 633 914	.490 157 394	.914 845 574	.996 266 829	.999 780 151
.090	.467 119 325	.489 200 830	.913 931 185	.996 184 992	.999 772 826
.091	.467 604 577	.488 244 754	.913 017 711	.996 102 323	.999 765 345
.092	.468 089 690	.487 289 140	.912 105 150	.996 018 823	.999 757 705
.093	.468 574 663	.486 333 996	.911 193 500	.995 934 496	.999 749 904
.094	.469 059 377	.485 379 323	.910 282 762	.995 849 342	.999 741 942
.095	.469 543 992	.484 425 119	.909 372 934	.995 763 363	.999 733 817
.096	.470 028 449	.483 471 384	.908 464 016	.995 676 562	.999 725 528
.097	.470 512 746	.482 518 119	.907 556 006	.995 588 939	.999 717 072
.098	.470 996 884	.481 565 323	.906 648 904	.995 500 496	.999 708 449
.099	.471 480 864	.480 612 994	.905 742 708	.995 411 236	.999 699 657
.100	.471 964 685	.479 661 135	.904 837 418	.995 321 160	.999 690 694

$$A = \int_x^{\infty} \frac{e^{-x}}{x} dx - \frac{1}{x} - \log_e x; \quad B = \int_x^{\infty} \frac{e^{-x}}{x} dx + \log_e x$$

TABLE I

$x$	$\int_x^{\infty} \frac{e^{-x}}{x^2} dx$	$\int_x^{\infty} \frac{e^{-x}}{x} dx$	$\int_x^{\infty} e^{-x} dx$	$\int_x^{\infty} x e^{-x} dx$	$\int_x^{\infty} x^2 e^{-x} dx$
.100	7.225 450 222	1.822 923 958	0.904 837 418	0.005 321 160	1.000 680 604
.101	.135 906 900	.813 925 019	.903 933 033	.005 230 209	.000 681 559
.102	.048 207 252	.805 923 647	.903 029 552	.005 138 501	.000 672 251
.103	0.962 206 377	.796 217 930	.902 126 073	.005 046 052	.000 662 769
.104	.878 121 851	.787 506 000	.901 225 207	.004 952 728	.000 653 110
.105	.795 633 182	.778 886 091	.900 324 523	.004 858 507	.000 643 273
.106	.714 781 795	.770 356 394	.899 424 048	.004 763 661	.000 633 257
.107	.635 520 951	.761 015 245	.898 525 673	.004 667 919	.000 623 060
.108	.557 845 656	.753 500 978	.897 627 506	.004 571 376	.000 612 682
.109	.481 502 581	.745 291 983	.896 730 417	.004 474 033	.000 602 120
.110	.406 830 991	.737 106 694	.895 834 135	.004 375 800	.000 591 373
.111	.333 507 683	.729 003 589	.894 938 749	.004 276 950	.000 580 440
.112	.261 556 829	.720 981 184	.894 044 257	.004 177 214	.000 569 320
.113	.190 950 104	.713 038 038	.893 150 660	.004 070 685	.000 558 010
.114	.121 651 428	.705 172 746	.892 257 956	.003 975 362	.000 546 519
.115	.053 026 007	.697 383 940	.891 366 144	.003 873 250	.000 534 818
.116	5.986 840 258	.689 970 288	.890 475 223	.003 770 349	.000 522 933
.117	.921 261 757	.682 930 492	.889 575 193	.003 668 600	.000 510 858
.118	.856 859 193	.674 463 287	.888 668 053	.003 562 187	.000 498 577
.119	.793 602 313	.666 967 441	.887 807 801	.003 456 929	.000 486 103
.120	.731 461 887	.659 541 752	.886 920 437	.003 350 680	.000 473 433
.121	.670 409 659	.652 185 048	.886 033 960	.003 244 060	.000 460 561
.122	.610 418 319	.644 896 186	.885 148 369	.003 136 469	.000 447 487
.123	.551 461 416	.637 674 052	.884 263 663	.003 028 003	.000 434 211
.124	.493 513 418	.630 517 557	.883 379 841	.002 918 941	.000 420 731
.125	.436 549 580	.623 425 641	.882 496 903	.002 800 015	.000 407 045
.126	.380 545 962	.616 397 266	.881 614 847	.002 698 317	.000 393 152
.127	.325 470 387	.609 431 421	.880 733 673	.002 596 849	.000 379 051
.128	.271 327 406	.602 527 119	.879 853 379	.002 474 612	.000 364 741
.129	.218 068 277	.595 683 394	.878 973 966	.002 361 606	.000 350 220
.130	.165 680 033	.588 899 305	.878 095 431	.002 247 837	.000 335 487
.131	.114 144 958	.582 173 930	.877 217 774	.002 133 303	.000 320 540
.132	.933 440 561	.575 506 371	.876 340 995	.002 018 006	.000 305 378
.133	.013 548 555	.568 895 747	.875 465 092	.001 901 049	.000 290 001
.134	4.964 450 328	.562 341 199	.874 590 065	.001 785 133	.000 274 406
.135	.916 127 829	.555 841 887	.873 715 912	.001 667 500	.000 258 502
.136	.868 563 544	.549 396 989	.872 842 632	.001 549 231	.000 242 558
.137	.821 740 475	.543 065 701	.871 970 226	.001 430 147	.000 226 303
.138	.775 642 123	.536 667 237	.871 098 692	.001 310 311	.000 209 826
.139	.730 252 470	.530 380 828	.870 228 028	.001 189 724	.000 193 125
.140	.685 555 059	.524 145 722	.869 358 235	.001 068 388	.000 170 198
.141	.641 537 483	.517 961 182	.868 489 312	.000 946 305	.000 159 044
.142	.598 182 362	.511 826 487	.867 621 256	.000 823 475	.000 141 665
.143	.555 470 333	.505 740 932	.866 754 069	.000 699 001	.000 124 055
.144	.513 495 537	.499 703 825	.865 887 748	.000 575 584	.000 106 216
.145	.471 956 497	.493 714 490	.865 022 203	.000 450 525	.000 888 145
.146	.431 110 114	.487 772 264	.864 157 703	.000 324 728	.000 669 841
.147	.390 871 647	.481 876 499	.863 293 977	.000 198 192	.000 451 304
.148	.351 210 705	.476 026 558	.862 431 115	.000 070 920	.000 232 531
.149	.312 121 234	.470 221 819	.861 569 115	.689 942 913	.000 013 522
.150	.273 591 566	.464 461 670	.860 707 976	.980 814 173	.008 994 275

TABLE I

$x$	$\int_x^{\infty} \frac{e^{-x}}{x^2} dx$	$\int_x^{\infty} \frac{e^{-x}}{x} dx$	$\int_x^{\infty} e^{-x} dx$	$\int_x^{\infty} xe^{-x} dx$	$\int_x^{\infty} x^2e^{-x} dx$
.150	4.273 591 506	1.464 461 070	0.800 707 076	0.080 814 173	1.998 604 275
.151	.235 010 195	.458 745 515	.858 817 600	.080 084 791	.998 974 700
.152	.198 165 923	.453 072 766	.858 088 281	.999 554 400	.998 955 064
.153	.161 248 14.	.447 442 848	.858 120 722	.980 423 560	.998 935 097
.154	.124 846 257	.441 855 193	.857 272 021	.989 291 913	.998 914 888
.155	.088 949 048	.436 300 262	.856 415 177	.989 150 529	.998 894 435
.156	.053 549 284	.430 804 500	.855 559 190	.989 020 424	.998 873 737
.157	.018 634 513	.425 340 379	.854 704 059	.988 892 596	.998 852 792
.158	3.984 196 166	.419 916 378	.853 849 782	.988 758 048	.998 831 601
.159	.050 224 990	.414 531 985	.852 996 359	.988 622 780	.998 810 161
.160	.016 711 982	.409 186 609	.852 143 789	.988 486 795	.998 788 471
.161	.883 648 367	.403 880 025	.851 292 071	.988 350 905	.998 766 531
.162	.851 025 583	.398 611 482	.850 441 205	.988 212 680	.998 744 338
.163	.818 835 236	.393 380 594	.849 591 188	.988 074 552	.998 721 893
.164	.787 009 335	.388 186 896	.848 742 022	.987 935 713	.998 699 192
.165	.755 719 701	.383 029 931	.847 893 794	.987 796 165	.998 676 237
.166	.724 778 909	.377 909 249	.847 046 234	.987 655 909	.998 653 024
.167	.694 239 132	.372 824 400	.846 199 611	.987 514 946	.998 629 554
.168	.664 093 085	.367 774 979	.845 353 835	.987 373 279	.998 605 824
.169	.634 333 571	.362 760 532	.844 508 903	.987 230 993	.998 581 835
.170	.604 953 563	.357 780 652	.843 664 817	.987 087 835	.998 557 584
.171	.575 916 203	.352 834 928	.842 821 573	.986 944 063	.998 533 071
.172	.547 304 794	.347 922 957	.841 979 173	.986 799 591	.998 508 294
.173	.519 022 796	.343 041 312	.841 137 615	.986 654 422	.998 483 252
.174	.491 093 821	.338 193 604	.840 296 863	.986 508 558	.998 457 945
.175	.463 511 632	.333 385 630	.839 457 921	.986 361 999	.998 432 370
.176	.436 279 130	.328 604 775	.838 617 983	.986 214 748	.998 406 527
.177	.409 393 363	.323 855 759	.837 779 785	.986 066 896	.998 380 416
.178	.382 785 510	.319 138 217	.836 942 423	.985 918 175	.998 354 033
.179	.356 530 885	.314 451 793	.836 105 899	.985 768 854	.998 327 380
.180	.330 593 928	.309 796 135	.835 270 211	.985 618 849	.998 300 454
.181	.304 969 205	.305 170 898	.834 435 359	.985 468 159	.998 273 254
.182	.279 651 493	.300 575 742	.833 601 340	.985 316 784	.998 245 780
.183	.254 635 327	.296 010 333	.832 768 156	.985 164 728	.998 218 029
.184	.229 915 895	.291 474 343	.831 935 804	.985 011 992	.998 190 062
.185	.205 488 142	.286 967 446	.831 104 284	.984 858 570	.998 161 697
.186	.181 347 206	.282 489 326	.830 273 525	.984 704 483	.998 133 113
.187	.157 498 332	.278 039 070	.829 443 736	.984 549 715	.998 104 248
.188	.133 906 870	.273 618 168	.828 614 707	.984 394 272	.998 075 103
.189	.119 598 268	.269 224 519	.827 786 507	.984 238 156	.998 045 675
.190	.087 553 070	.264 858 424	.826 959 134	.984 081 369	.998 015 964
.191	.064 781 919	.260 519 590	.826 132 588	.983 923 913	.997 985 968
.192	.042 265 547	.256 207 726	.825 306 898	.983 765 787	.997 955 687
.193	.020 094 778	.251 922 549	.824 481 974	.983 606 995	.997 925 119
.194	2.997 995 521	.247 663 779	.823 657 904	.983 447 538	.997 894 264
.195	.076 233 774	.243 431 139	.822 834 658	.983 287 416	.997 863 121
.196	.054 715 614	.239 224 359	.822 012 235	.983 126 633	.997 831 687
.197	.933 437 201	.235 043 171	.821 190 633	.982 965 188	.997 799 963
.198	.912 394 776	.230 897 311	.820 369 853	.982 803 682	.997 767 948
.199	.891 584 652	.226 756 521	.819 549 893	.982 640 322	.997 735 640
.200	.871 093 221	.222 650 544	818 730 753	.982 478 904	.997 703 938

TABLE I

$x$	$\int_x^{\infty} \frac{e^{-x}}{x^2} dx$	$\int_x^{\infty} \frac{e^{-x}}{x} dx$	$\int_x^{\infty} e^{-x} dx$	$\int_x^{\infty} x e^{-x} dx$	$\int_x^{\infty} x^2 e^{-x} dx$
.200	2.871 003 221	1.222 650 544	0.818 730 753	0.982 476 904	1.997 703 038
.201	.850 646 947	.218 509 130	.817 912 432	.982 312 830	.997 670 141
.202	.890 512 306	.214 512 030	.817 094 928	.982 148 173	.997 636 948
.203	.810 506 081	.210 479 000	.816 278 241	.981 982 724	.997 603 450
.204	.790 894 763	.206 469 800	.815 462 371	.981 816 605	.997 569 672
.205	.771 405 155	.202 484 193	.814 647 316	.981 650 016	.997 535 586
.206	.752 124 057	.198 521 944	.813 833 976	.981 482 690	.997 501 200
.207	.733 048 335	.194 582 824	.813 019 650	.981 314 718	.997 466 514
.208	.714 174 916	.190 666 607	.812 207 637	.981 146 100	.997 431 526
.209	.695 507 787	.186 773 068	.811 395 236	.980 976 840	.997 396 235
.210	.677 022 905	.182 901 086	.810 584 246	.980 806 938	.997 360 640
.211	.658 738 640	.179 053 146	.809 774 067	.980 636 394	.997 324 741
.212	.640 644 883	.175 226 332	.808 964 098	.980 465 213	.997 288 536
.213	.622 738 936	.171 421 333	.808 156 137	.980 293 391	.997 2 2 025
.214	.605 918 063	.167 637 942	.807 348 385	.980 120 939	.997 215 205
.215	.587 470 583	.163 875 953	.806 541 440	.979 947 850	.997 178 078
.216	.570 120 893	.160 135 164	.805 735 202	.979 774 127	.997 140 640
.217	.552 939 322	.156 415 375	.804 929 969	.979 599 773	.997 102 893
.218	.535 932 425	.152 716 390	.804 125 442	.979 424 788	.997 064 833
.219	.519 097 696	.149 038 013	.803 321 718	.979 249 174	.997 026 492
.220	.502 432 063	.145 380 655	.802 518 798	.979 072 934	.996 987 777
.221	.485 931 960	.141 742 326	.801 716 680	.978 896 067	.996 948 778
.222	.469 602 227	.138 124 639	.800 915 364	.978 718 575	.996 909 493
.223	.453 432 154	.134 526 811	.800 114 849	.978 540 461	.996 869 833
.224	.437 422 475	.130 948 061	.799 315 131	.978 361 725	.996 829 885
.225	.421 570 962	.127 390 010	.798 516 219	.978 182 368	.996 789 620
.226	.405 875 431	.123 850 680	.797 718 102	.978 002 393	.996 749 035
.227	.390 333 739	.120 330 500	.796 920 782	.977 821 800	.996 708 131
.228	.374 943 774	.116 829 295	.796 124 260	.977 640 500	.996 666 906
.229	.359 703 468	.113 346 897	.795 328 534	.977 458 768	.996 625 359
.230	.344 610 785	.109 883 139	.794 533 603	.977 276 331	.996 583 490
.231	.329 663 731	.106 437 854	.793 739 465	.977 093 283	.996 541 297
.232	.314 860 349	.103 010 881	.792 946 123	.976 909 624	.996 498 780
.233	.300 198 686	.099 602 059	.792 153 574	.976 725 356	.996 455 938
.234	.285 676 874	.096 211 228	.791 361 816	.976 540 481	.996 412 769
.235	.271 293 044	.092 838 231	.790 570 850	.976 354 999	.996 369 274
.236	.257 045 361	.089 482 914	.789 780 674	.976 168 913	.996 325 450
.237	.242 932 041	.086 145 124	.788 991 288	.975 982 223	.996 281 298
.238	.228 951 304	.082 824 709	.788 202 091	.975 791 932	.996 236 816
.239	.215 101 416	.079 521 522	.787 414 882	.975 607 039	.996 192 004
.240	.201 380 673	.076 235 415	.786 627 861	.975 418 548	.996 146 860
.241	.187 787 394	.072 966 242	.785 841 626	.975 229 453	.996 101 384
.242	.174 319 632	.069 713 860	.785 056 178	.975 039 773	.996 955 575
.243	.160 976 658	.066 478 127	.784 271 514	.974 849 492	.996 909 432
.244	.147 755 991	.063 253 904	.783 487 634	.974 658 617	.996 862 954
.245	.134 656 349	.060 056 052	.782 704 538	.974 467 150	.996 816 140
.246	.121 676 196	.056 869 434	.781 922 225	.974 275 092	.996 868 990
.247	.108 814 013	.053 698 916	.781 140 694	.974 082 445	.996 821 502
.248	.096 068 311	.050 544 364	.780 359 943	.973 889 209	.996 773 676
.249	.083 437 020	.047 405 647	.779 579 973	.973 695 387	.996 725 511
.250	.070 920 498	.044 282 634	.778 800 783	.973 500 979	.996 677 007

TABLE I

$x$	$\int_x^\infty \frac{e^{-x}}{x^2} dx$	$\int_x^\infty \frac{e^{-x}}{x} dx$	$\int_x^\infty e^{-x} dx$	$\int_x^\infty xe^{-x} dx$	$\int_x^\infty x^2e^{-x} dx$
.250	2.070 920 498	1.044 282 634	0.778 800 783	0.973 500 979	1.905 677 007
.251	.058 515 525	.041 175 198	.778 022 372	.973 305 987	.995 028 161
.252	.040 221 305	.038 083 211	.777 244 738	.973 110 412	.995 578 974
.253	.034 036 463	.035 006 548	.776 467 882	.972 914 255	.995 629 444
.254	.021 959 648	.031 945 084	.775 691 802	.972 717 520	.995 479 572
.255	.009 989 530	.029 808 097	.774 916 498	.972 520 205	.995 429 355
.256	1.998 124 790	.025 857 267	.774 141 909	.972 322 313	.995 378 794
.257	.986 304 166	.022 850 674	.773 368 214	.972 123 845	.995 327 887
.258	.974 706 365	.019 848 798	.772 595 232	.971 924 802	.995 276 633
.259	.963 150 148	.016 861 524	.771 823 023	.971 725 186	.995 225 032
.260	.951 604 285	.013 888 737	.771 051 580	.971 524 908	.995 173 083
.261	.940 337 570	.010 930 321	.770 280 920	.971 324 240	.995 120 790
.262	.929 078 812	.007 986 164	.769 511 024	.971 122 912	.995 069 139
.263	.917 916 840	.005 056 154	.768 741 807	.970 921 016	.995 015 141
.264	.906 850 500	.002 140 181	.767 973 540	.970 718 554	.994 961 792
.265	.895 878 656	0.000 238 136	.767 205 950	.970 515 527	.994 908 091
.266	.885 000 191	.996 349 912	.766 439 128	.970 311 935	.994 851 038
.267	.874 214 005	.993 475 401	.765 673 071	.970 107 782	.994 799 631
.268	.863 519 014	.990 614 498	.764 907 781	.969 903 006	.994 744 860
.269	.852 914 149	.987 767 099	.764 143 256	.969 697 791	.994 689 753
.270	.842 398 300	.984 933 101	.763 379 494	.969 491 958	.994 634 281
.271	.831 970 610	.982 112 403	.762 616 496	.969 285 567	.994 578 452
.272	.821 029 881	.979 304 902	.761 854 201	.969 078 620	.994 522 266
.273	.811 375 109	.976 510 500	.761 092 788	.968 871 118	.994 465 722
.274	.801 205 433	.973 729 098	.760 332 075	.968 663 064	.994 408 819
.275	.791 119 850	.970 960 598	.759 572 123	.968 454 457	.994 351 556
.276	.781 117 308	.968 204 905	.758 812 931	.968 245 300	.994 293 933
.277	.771 196 912	.965 461 922	.758 054 407	.968 035 593	.994 235 949
.278	.761 357 730	.962 731 556	.757 296 822	.967 825 338	.994 177 603
.279	.751 598 813	.960 013 713	.756 539 903	.967 614 536	.994 118 895
.280	.741 919 348	.957 308 300	.755 783 741	.967 403 189	.994 059 823
.281	.732 318 351	.954 615 227	.755 028 335	.967 191 298	.994 000 388
.282	.722 791 975	.951 934 403	.754 273 685	.966 978 864	.993 940 588
.283	.713 348 352	.949 265 739	.753 519 788	.966 765 888	.993 880 422
.284	.703 977 631	.946 609 146	.752 766 643	.966 552 372	.993 819 890
.285	.694 681 970	.943 964 536	.752 014 254	.966 338 317	.993 758 901
.286	.685 460 539	.941 331 824	.751 262 616	.966 123 724	.993 697 725
.287	.676 312 528	.938 710 923	.750 511 729	.965 908 595	.993 636 991
.288	.667 237 113	.936 101 749	.749 761 592	.965 692 931	.993 574 687
.289	.658 233 517	.933 504 218	.749 012 205	.965 476 733	.993 511 714
.290	.649 300 953	.930 918 246	.748 263 568	.965 260 002	.993 448 970
.291	.640 438 647	.928 343 752	.747 515 678	.965 042 740	.993 385 856
.292	.631 645 839	.925 780 654	.746 768 536	.964 824 949	.993 322 369
.293	.622 921 779	.923 228 872	.746 022 141	.964 606 628	.993 258 511
.294	.614 265 726	.920 688 327	.745 276 491	.964 387 780	.993 194 270
.295	.605 676 952	.918 158 938	.744 531 587	.964 168 406	.993 129 673
.296	.597 154 736	.915 640 629	.743 787 428	.963 948 507	.993 064 693
.297	.588 698 369	.913 133 322	.743 044 012	.963 728 084	.992 999 337
.298	.580 307 153	.910 636 940	.742 301 340	.963 507 139	.992 933 606
.299	.571 980 396	.908 151 408	.741 559 409	.963 285 673	.992 867 498
.300	.563 717 417	.905 676 652	.740 818 221	.963 063 687	.992 801 014

TABLE I

$x$	$\int_x^{\infty} \frac{e^{-x}}{x^2} dx$	$\int_x^{\infty} \frac{e^{-x}}{x} dx$	$\int_x^{\infty} e^{-x} dx$	$\int_x^{\infty} x e^{-x} dx$	$\int_x^{\infty} x^2 e^{-x} dx$
.300	1.503 717 417	0.005 076 652	0.740 819 221	0.903 003 687	1.002 801 014
.301	.555 517 546	.003 212 506	.740 077 773	.902 841 182	.992 734 151
.302	.547 380 121	.000 750 107	.730 338 065	.902 618 160	.992 666 910
.303	.539 304 487	.008 316 203	.738 500 000	.902 304 623	.992 500 290
.304	.531 200 002	.805 883 901	.737 800 806	.902 170 570	.992 531 200
.305	.523 336 029	.803 461 021	.737 123 374	.901 946 004	.992 462 000
.306	.515 441 038	.801 030 282	.736 306 619	.901 720 925	.992 304 148
.307	.507 607 115	.888 648 914	.735 650 601	.901 495 335	.992 325 004
.308	.499 830 948	.886 257 747	.734 915 318	.901 260 236	.992 255 479
.309	.492 112 833	.883 876 714	.734 180 770	.901 042 628	.992 185 570
.310	.484 452 177	.881 505 746	.733 446 086	.900 815 513	.992 115 278
.311	.476 848 395	.879 144 775	.732 713 876	.900 587 891	.992 044 601
.312	.469 300 905	.876 793 737	.731 981 528	.900 359 765	.991 973 540
.313	.461 809 137	.874 452 564	.731 240 913	.900 131 135	.991 902 063
.314	.454 372 528	.872 121 192	.730 519 028	.900 002 003	.991 830 290
.315	.446 990 521	.869 799 556	.729 788 874	.900 672 370	.991 758 040
.316	.439 062 508	.867 487 501	.729 059 450	.900 442 235	.991 685 433
.317	.432 308 123	.865 185 234	.728 330 755	.900 211 604	.991 612 438
.318	.425 166 040	.862 892 423	.727 602 788	.900 980 475	.991 539 055
.319	.417 997 643	.860 609 095	.726 875 549	.900 748 850	.991 465 282
.320	.410 880 552	.858 335 189	.726 149 037	.900 516 720	.991 391 119
.321	.403 814 873	.856 070 644	.725 423 251	.900 284 115	.991 316 566
.322	.396 800 100	.853 815 398	.724 698 190	.900 051 008	.991 241 622
.323	.389 835 720	.851 560 393	.723 973 854	.900 817 409	.991 166 287
.324	.382 921 267	.849 332 568	.723 250 242	.900 583 321	.991 090 539
.325	.376 056 222	.847 104 866	.722 527 354	.900 348 744	.991 014 439
.326	.369 240 115	.844 886 227	.721 805 187	.900 113 678	.990 937 925
.327	.362 472 467	.842 676 594	.721 083 743	.900 878 127	.990 861 018
.328	.355 752 809	.840 475 910	.720 363 020	.900 642 000	.990 783 715
.329	.349 080 075	.838 284 118	.719 643 017	.900 405 569	.990 706 018
.330	.342 455 607	.836 101 161	.718 923 733	.900 168 565	.990 627 925
.331	.335 877 151	.833 926 985	.718 205 160	.900 931 080	.990 549 437
.332	.329 344 859	.831 761 535	.717 487 323	.900 693 114	.990 470 551
.333	.322 858 292	.829 604 754	.716 770 194	.900 454 669	.990 391 268
.334	.316 417 605	.827 456 591	.716 053 782	.900 215 745	.990 311 587
.335	.310 020 582	.825 316 989	.715 338 086	.900 976 345	.990 231 507
.336	.303 688 584	.823 185 898	.714 623 106	.900 739 469	.990 151 029
.337	.297 390 594	.821 063 263	.713 908 840	.900 506 119	.990 070 151
.338	.291 096 197	.818 949 033	.713 195 288	.900 265 294	.989 988 873
.339	.284 874 984	.816 843 155	.712 482 449	.900 013 909	.989 907 194
.340	.278 696 546	.814 745 580	.711 770 323	.900 772 233	.989 825 114
.341	.272 560 486	.812 656 254	.711 058 008	.900 529 906	.989 742 633
.342	.266 466 404	.810 575 130	.710 348 215	.900 287 291	.989 659 749
.343	.260 413 914	.808 502 155	.709 638 212	.900 044 118	.989 576 462
.344	.254 402 626	.806 437 281	.708 928 928	.900 800 479	.989 492 772
.345	.248 432 159	.804 380 459	.708 220 353	.900 556 375	.989 408 678
.346	.242 502 137	.802 331 640	.707 512 487	.900 311 808	.989 324 180
.347	.236 612 188	.800 290 775	.706 805 328	.900 066 777	.989 239 277
.348	.230 761 941	.798 257 818	.706 098 876	.900 821 265	.989 153 909
.349	.224 951 034	.796 232 720	.705 393 130	.900 575 333	.989 068 254
.350	.219 179 107	.794 215 435	.704 688 090	.900 328 921	.988 982 133

TABLE I

$x$	$\int_x^\infty \frac{e^{-x}}{x^2} dx$	$\int_x^\infty \frac{e^{-x}}{x} dx$	$\int_x^\infty e^{-x} dx$	$\int_x^\infty xe^{-x} dx$	$\int_x^\infty x^2 e^{-x} dx$
.350	1.219 170 107	0.794 215 435	0.704 088 090	0.951 328 921	1.088 082 183
.351	.213 445 805	.792 205 915	.703 081 754	.951 082 052	.988 895 005
.352	.207 750 776	.790 204 110	.701 240 122	.950 834 725	.988 808 076
.353	.202 093 674	.788 200 990	.702 577 193	.950 586 043	.988 721 327
.354	.196 474 155	.786 223 493	.701 874 907	.950 338 706	.988 634 575
.355	.190 891 880	.784 244 580	.701 173 443	.950 090 016	.988 546 414
.356	.185 340 514	.782 273 206	.700 472 620	.949 846 873	.988 458 844
.357	.179 837 726	.780 300 326	.699 772 498	.949 601 279	.988 371 864
.358	.174 365 110	.778 328 807	.699 071 075	.949 354 236	.988 284 473
.359	.168 923 580	.776 403 875	.698 374 351	.949 100 744	.988 198 672
.360	.163 527 577	.774 462 218	.697 676 326	.948 850 803	.988 108 459
.361	.158 161 895	.772 527 891	.696 978 098	.948 608 417	.988 007 834
.362	.152 831 131	.770 600 824	.696 282 368	.948 366 585	.987 910 797
.363	.147 535 067	.768 681 003	.695 581 433	.948 124 309	.987 823 346
.364	.142 273 366	.766 768 378	.694 891 103	.947 881 500	.987 731 483
.365	.137 045 727	.764 862 900	.694 196 651	.947 638 428	.987 641 206
.366	.131 851 550	.762 961 547	.693 502 801	.947 394 826	.987 548 514
.367	.126 691 410	.761 073 290	.692 809 645	.947 150 785	.987 455 408
.368	.121 564 267	.759 189 004	.692 117 182	.946 906 305	.987 361 896
.369	.116 469 890	.757 311 710	.691 425 410	.946 661 387	.987 267 949
.370	.111 408 114	.755 441 128	.690 734 331	.946 416 033	.987 173 596
.371	.106 378 688	.753 578 028	.690 043 912	.946 170 244	.987 078 826
.372	.101 381 301	.751 721 501	.689 354 243	.945 924 021	.986 983 639
.373	.096 415 078	.749 871 810	.688 665 233	.945 677 305	.986 888 035
.374	.091 481 545	.748 028 914	.687 976 912	.945 430 277	.986 792 012
.375	.086 578 634	.746 192 776	.687 290 279	.945 182 757	.986 695 572
.376	.081 701 677	.744 363 358	.686 602 333	.944 934 810	.986 598 712
.377	.076 865 408	.742 540 621	.685 916 074	.944 686 434	.986 501 433
.378	.072 054 568	.740 724 534	.685 230 501	.944 437 630	.986 403 735
.379	.067 273 890	.738 915 053	.684 545 613	.944 188 400	.986 305 616
.380	.062 523 143	.737 112 144	.683 861 409	.943 938 745	.986 207 077
.381	.057 802 050	.735 315 771	.683 177 890	.943 688 666	.986 108 117
.382	.053 110 968	.733 525 897	.682 495 053	.943 438 161	.986 008 735
.383	.048 447 852	.731 742 486	.681 812 809	.943 187 240	.985 908 932
.384	.043 814 254	.729 975 564	.681 131 427	.942 935 895	.985 808 708
.385	.039 209 335	.728 224 5	.680 450 036	.942 684 131	.985 708 058
.386	.034 632 854	.726 478 54	.679 770 526	.942 431 949	.985 607 986
.387	.030 084 575	.724 737 776	.679 091 095	.942 179 349	.985 505 492
.388	.025 564 263	.722 991 158	.678 412 343	.941 926 332	.985 403 573
.389	.021 071 697	.721 248 794	.677 734 270	.941 673 96	.985 301 230
.390	.016 606 018	.719 510 652	.677 056 874	.941 421 056	.985 198 462
.391	.012 168 826	.717 773 096	.676 380 156	.941 168 797	.985 095 260
.392	.007 758 090	.715 978 805	.675 704 114	.940 916 127	.984 991 650
.393	.003 374 186	.714 256 215	.675 028 748	.940 664 045	.984 887 606
.394	0.999 016 893	.712 541 025	.674 354 056	.940 411 554	.984 783 135
.395	.994 685 999	.710 833 088	.673 680 039	.939 158 655	.984 678 238
.396	.990 381 283	.709 130 575	.673 006 696	.938 905 347	.984 572 913
.397	.986 102 535	.707 434 051	.672 334 026	.938 651 634	.984 467 161
.398	.981 849 543	.705 743 491	.671 662 028	.938 398 515	.984 361 381
.399	.977 622 099	.704 058 857	.670 990 701	.938 145 991	.984 254 373
400	.973 419 996	.702 380 119	.670 320 046	.937 893 064	.984 147 336

TABLE I

$x$	$\int_x^1 \frac{e^{-x}}{x^2} dx$	$\int_x^1 \frac{e^{-x}}{x} dx$	$\int_x^1 e^{-x} dx$	$\int_x^1 x e^{-x} dx$	$\int_x^1 x^2 e^{-x} dx$
.400	0.973 419 906	0.702 380 119	0.670 320 046	0.938 448 064	1.000 147 336
.401	.969 243 031	.700 707 246	.669 650 061	.938 179 736	.998 039 870
.402	.965 091 060	.699 040 208	.668 980 746	.937 911 005	.997 821 075
.403	.960 963 705	.697 378 973	.668 312 000	.937 641 875	.997 603 230
.404	.956 800 947	.695 723 512	.667 644 121	.937 372 346	.997 385 805
.405	.952 782 520	.694 073 794	.666 976 811	.937 102 419	.997 168 710
.406	.948 728 258	.692 429 790	.666 310 107	.936 832 095	.996 951 094
.407	.944 697 942	.690 791 409	.665 644 190	.936 561 376	.996 733 046
.408	.940 691 302	.689 158 801	.664 978 879	.936 290 291	.996 514 567
.409	.936 708 418	.687 531 759	.664 314 232	.936 018 753	.996 295 656
.410	.932 748 896	.685 910 311	.663 650 250	.935 746 853	.996 076 312
.411	.928 812 459	.684 294 431	.662 986 632	.935 474 560	.995 856 535
.412	.924 899 106	.682 684 088	.662 324 276	.935 201 878	.995 636 327
.413	.921 008 597	.681 079 255	.661 662 283	.934 928 806	.995 415 685
.414	.917 140 752	.679 479 933	.661 000 951	.934 655 345	.995 194 609
.415	.913 295 303	.677 886 004	.660 340 281	.934 381 407	.994 973 199
.416	.909 472 350	.676 297 531	.659 680 270	.934 107 263	.994 751 355
.417	.905 671 444	.674 714 455	.659 020 920	.933 832 613	.994 529 176
.418	.901 892 505	.673 136 750	.658 362 228	.933 557 610	.994 306 662
.419	.898 135 392	.671 564 388	.657 704 195	.933 282 253	.994 083 712
.420	.894 399 349	.669 997 341	.657 046 820	.933 006 484	.993 860 327
.421	.890 685 707	.668 435 584	.656 390 101	.932 730 304	.993 636 606
.422	.886 993 031	.666 879 000	.655 734 080	.932 453 801	.993 412 650
.423	.883 321 420	.665 327 831	.655 078 633	.932 177 805	.993 188 469
.424	.879 670 770	.663 781 782	.654 423 882	.931 902 607	.992 963 563
.425	.876 040 923	.662 240 018	.653 769 785	.931 627 044	.992 738 321
.426	.872 431 743	.660 705 210	.653 116 342	.931 351 904	.992 512 749
.427	.868 843 052	.659 174 635	.652 463 552	.931 076 480	.992 286 856
.428	.865 274 700	.657 649 102	.651 811 415	.930 801 700	.992 060 641
.429	.861 726 531	.656 128 779	.651 159 920	.930 526 539	.991 834 103
.430	.858 198 401	.654 613 417	.650 509 005	.930 251 005	.991 607 343
.431	.854 690 149	.653 103 147	.649 858 911	.929 975 101	.991 380 364
.432	.851 201 630	.651 597 853	.649 209 377	.929 698 827	.991 153 165
.433	.847 732 695	.650 097 510	.648 560 492	.929 422 185	.990 925 746
.434	.844 283 197	.648 602 184	.647 912 255	.929 145 174	.990 698 107
.435	.840 852 991	.647 111 761	.647 264 607	.928 867 797	.990 470 348
.436	.837 441 933	.645 626 246	.646 617 726	.928 590 054	.990 242 470
.437	.834 049 878	.644 145 617	.645 971 431	.928 312 847	.990 014 473
.438	.830 676 888	.642 669 848	.645 325 783	.928 035 176	.989 786 456
.439	.827 322 222	.641 198 916	.644 680 780	.927 757 642	.989 558 419
.440	.823 986 341	.639 732 798	.644 036 421	.927 480 068	.989 330 362
.441	.820 668 968	.638 271 470	.643 392 707	.927 202 446	.989 102 285
.442	.817 369 787	.636 814 009	.642 749 635	.926 924 874	.988 874 198
.443	.814 088 812	.635 363 693	.642 107 207	.926 647 300	.988 645 999
.444	.810 825 941	.633 915 998	.641 465 421	.926 369 688	.988 417 689
.445	.807 580 952	.632 473 601	.640 824 276	.926 091 070	.988 189 262
.446	.804 353 742	.631 035 881	.640 183 772	.925 812 454	.987 960 727
.447	.801 144 184	.629 602 814	.639 543 908	.925 533 835	.987 731 982
.448	.797 952 147	.628 174 380	.638 904 684	.925 255 215	.987 503 027
.449	.794 777 505	.626 750 554	.638 266 090	.924 976 577	.987 273 862
.450	.791 620 132	.625 331 310	.637 628 152	.924 697 820	.987 044 487



TABLE I

$x$	$\int_x^{\infty} \frac{e^{-x}}{x^2} dx$	$\int_x^{\infty} \frac{e^{-x}}{x} dx$	$\int_x^{\infty} e^{-x} dx$	$\int_x^{\infty} x e^{-x} dx$	$\int_x^{\infty} x^2 e^{-x} dx$
.450	0.791 620 132	0.625 331 316	0.637 028 152	0.024 500 820	1.078 241 340
.451	.788 470 902	.623 916 644	.636 000 812	.024 271 712	.078 111 908
.452	.785 350 601	.622 506 516	.635 351 170	.023 986 251	.077 082 211
.453	.782 250 378	.621 100 910	.635 718 134	.023 698 448	.077 851 979
.454	.779 160 840	.619 000 800	.635 082 731	.023 410 204	.077 721 301
.455	.776 087 956	.618 303 182	.634 417 908	.023 121 701	.077 500 177
.456	.773 031 608	.616 911 017	.633 813 837	.022 832 947	.077 458 608
.457	.769 991 677	.615 523 290	.633 180 340	.022 543 756	.077 320 692
.458	.766 968 047	.614 139 980	.632 547 471	.022 254 220	.077 194 129
.459	.763 960 509	.612 761 067	.631 915 215	.021 961 312	.077 061 220
.460	.760 960 221	.611 386 530	.631 281 046	.021 671 122	.076 927 864
.461	.757 963 707	.610 016 340	.630 652 077	.021 383 562	.076 794 011
.462	.755 034 215	.608 650 503	.630 022 340	.021 092 661	.076 659 800
.463	.752 080 361	.607 288 973	.629 392 631	.020 801 421	.076 525 112
.464	.749 162 129	.605 931 738	.628 763 554	.020 509 844	.076 380 001
.465	.746 210 405	.604 578 778	.628 135 105	.020 217 920	.076 254 371
.466	.743 352 080	.603 230 075	.627 507 284	.019 925 678	.076 118 320
.467	.740 470 047	.601 885 007	.626 880 000	.019 633 061	.075 981 837
.468	.737 603 193	.600 541 357	.626 251 521	.019 340 173	.075 844 897
.469	.734 751 123	.599 200 301	.625 627 581	.019 046 919	.075 707 598
.470	.731 911 631	.597 877 429	.625 002 268	.018 753 334	.075 569 070
.471	.729 092 701	.596 559 711	.624 377 578	.018 459 418	.075 431 382
.472	.726 285 512	.595 246 138	.623 753 513	.018 165 171	.075 292 645
.473	.723 493 014	.593 936 684	.623 130 071	.017 870 595	.075 153 457
.474	.720 715 107	.592 631 333	.622 507 253	.017 575 600	.075 013 820
.475	.717 951 633	.591 330 065	.621 885 056	.017 280 458	.074 873 732
.476	.715 202 520	.590 032 803	.621 262 482	.016 984 900	.074 733 194
.477	.712 467 079	.588 739 708	.620 642 529	.016 689 016	.074 592 206
.478	.709 746 985	.587 451 582	.620 022 197	.016 392 807	.074 450 766
.479	.707 040 367	.586 168 467	.619 402 485	.016 096 275	.074 308 875
.480	.704 347 722	.584 891 344	.618 783 392	.015 799 420	.074 166 533
.481	.701 668 952	.583 619 197	.618 164 918	.015 502 213	.074 023 740
.482	.699 003 961	.582 351 006	.617 547 062	.015 204 746	.073 880 495
.483	.696 352 601	.581 086 755	.616 929 823	.014 906 928	.073 736 798
.484	.693 714 959	.579 826 425	.616 313 202	.014 608 792	.073 592 619
.485	.691 090 750	.578 571 000	.615 697 197	.014 310 337	.073 448 047
.486	.688 488 170 965	.577 320 162	.615 081 807	.014 011 569	.073 302 991
.487	.685 892 491	.576 073 794	.614 467 033	.013 712 478	.073 157 488
.488	.683 308 251	.574 831 078	.613 852 873	.013 413 075	.073 011 529
.489	.680 737 155	.573 593 998	.613 239 327	.013 113 358	.072 865 117
.490	.678 189 111	.572 361 836	.612 626 304	.012 813 327	.072 718 252
.491	.675 654 033	.571 134 476	.612 014 074	.012 512 981	.072 570 934
.492	.673 131 833	.569 912 002	.611 402 306	.012 212 330	.072 423 162
.493	.670 621 428	.568 694 695	.610 791 260	.011 911 365	.072 274 937
.494	.668 122 730	.567 492 041	.610 180 781	.011 610 089	.072 126 257
.495	.665 635 076	.566 294 722	.609 570 907	.011 308 506	.071 977 124
.496	.663 158 121	.565 102 123	.608 961 641	.011 006 615	.071 827 537
.497	.660 691 043	.563 914 253	.608 352 981	.010 704 417	.071 677 496
.498	.658 234 338	.562 730 917	.607 744 935	.010 401 912	.071 527 000
.499	.655 787 926	.561 551 478	.607 137 494	.010 099 103	.071 376 049
.500	.653 351 274	.559 977 595	.606 530 660	.009 795 990	.071 224 644

TABLE I

$x$	$\int_x^{\infty} \frac{e^{-x}}{x^2} dx$	$\int_x^{\infty} \frac{e^{-x}}{x} dx$	$\int_x^{\infty} e^{-x} dx$	$\int_x^{\infty} xe^{-x} dx$	$\int_x^{\infty} x^2 e^{-x} dx$
.500	0.653 237 724	0.559 773 595	0.606 530 660	0.909 795 900	1.971 224 644
.501	.650 867 653	.558 562 351	.605 924 432	.909 492 573	.971 072 784
.502	.648 459 634	.557 354 730	.605 318 811	.909 188 854	.970 920 469
.503	.646 063 586	.556 150 717	.604 713 794	.908 884 833	.970 767 698
.504	.643 679 432	.554 950 293	.604 109 383	.908 580 512	.970 614 473
.505	.641 307 093	.553 753 452	.603 505 575	.908 275 891	.970 460 791
.506	.638 946 493	.552 560 170	.602 902 372	.907 970 971	.970 306 655
.507	.636 597 555	.551 370 434	.602 299 770	.907 665 754	.970 152 062
.508	.634 260 204	.550 184 229	.601 697 772	.907 360 240	.969 997 013
.509	.631 934 363	.549 001 540	.601 096 375	.907 054 428	.969 811 500
.510	.629 619 959	.547 822 352	.600 495 579	.906 748 324	.969 635 548
.511	.627 316 918	.546 646 650	.599 895 383	.906 441 924	.969 529 131
.512	.625 025 166	.545 471 420	.599 295 783	.906 135 231	.969 372 257
.513	.622 744 630	.544 305 616	.598 696 792	.905 828 216	.969 214 927
.514	.620 475 239	.543 140 314	.598 098 394	.905 520 969	.969 057 141
.515	.618 216 919	.541 978 410	.597 500 595	.905 213 401	.968 898 897
.516	.615 969 602	.540 819 919	.596 903 393	.904 905 543	.968 740 196
.517	.613 733 216	.539 664 826	.596 306 788	.904 597 396	.968 581 037
.518	.611 507 691	.538 513 118	.595 710 779	.904 288 962	.968 421 424
.519	.609 292 958	.537 364 780	.595 115 366	.903 980 241	.968 261 352
.520	.607 088 948	.536 219 798	.594 520 548	.903 671 233	.968 100 822
.521	.604 895 594	.535 078 158	.593 926 325	.903 361 940	.967 939 835
.522	.602 712 828	.533 939 845	.593 332 095	.903 052 362	.967 778 390
.523	.600 540 580	.532 804 848	.592 739 659	.902 742 501	.967 616 487
.524	.598 378 788	.531 673 150	.592 147 216	.902 432 357	.967 454 127
.525	.596 227 384	.530 544 739	.591 555 364	.902 121 931	.967 291 309
.526	.594 086 301	.529 419 601	.590 964 105	.901 811 224	.967 128 032
.527	.591 955 476	.528 297 723	.590 373 436	.901 500 237	.966 964 297
.528	.589 834 845	.527 179 090	.589 783 358	.901 188 970	.966 800 104
.529	.587 724 341	.526 063 691	.589 193 869	.900 877 426	.966 635 453
.530	.585 623 904	.524 951 510	.588 604 970	.900 565 604	.966 470 343
.531	.583 533 469	.523 842 536	.588 016 659	.900 253 505	.966 304 775
.532	.581 452 976	.522 736 754	.587 428 936	.899 941 130	.966 138 748
.533	.579 382 360	.521 634 152	.586 841 801	.899 628 481	.965 972 262
.534	.577 321 561	.520 534 717	.586 255 252	.899 315 567	.965 805 317
.535	.575 270 519	.519 438 435	.585 669 290	.899 002 360	.965 637 913
.536	.573 229 172	.518 345 294	.585 083 914	.898 688 891	.965 470 051
.537	.571 197 459	.517 255 282	.584 499 122	.898 375 151	.965 301 729
.538	.569 175 324	.516 168 384	.583 914 915	.898 061 139	.965 132 948
.539	.567 162 705	.515 084 590	.583 331 292	.897 746 859	.964 963 707
.540	.565 159 514	.514 003 886	.582 748 252	.897 432 309	.964 794 008
.541	.563 165 784	.512 926 250	.582 165 795	.897 117 491	.964 623 849
.542	.561 181 367	.511 851 697	.581 583 921	.896 802 406	.964 453 230
.543	.559 206 234	.510 780 188	.581 002 627	.896 487 051	.964 282 152
.544	.557 240 330	.509 711 720	.580 421 915	.896 171 437	.964 110 614
.545	.555 283 598	.508 646 280	.579 841 783	.895 855 555	.963 938 616
.546	.553 335 081	.507 583 857	.579 262 231	.895 539 410	.963 766 159
.547	.551 397 425	.506 524 437	.578 683 259	.895 223 001	.963 593 242
.548	.549 467 875	.505 468 009	.578 104 865	.894 906 331	.963 419 804
.549	.547 547 276	.504 414 591	.577 527 049	.894 589 399	.963 246 027
.550	.545 635 574	.503 364 081	.576 949 810	.894 272 206	.963 071 730

TABLE I

$x$	$\int_x^\infty \frac{e^{-x}}{x^2} dx$	$\int_x^\infty \frac{e^{-x}}{x} dx$	$\int_x^\infty e^{-x} dx$	$\int_x^\infty x e^{-x} dx$	$\int_x^\infty x^2 e^{-x} dx$
.550	0.545 635 574	0.503 364 081	0.576 946 810	0.891 272 206	1.903 071 730
.551	.543 732 715	.502 316 557	.576 373 149	.893 051 751	.902 896 972
.552	.541 838 645	.501 271 978	.575 797 064	.893 637 013	.902 721 755
.553	.539 953 311	.500 230 332	.575 221 555	.893 319 074	.902 546 077
.554	.538 076 060	.499 191 608	.574 646 621	.893 000 848	.902 369 939
.555	.536 208 643	.498 155 792	.574 072 261	.892 682 366	.902 193 341
.556	.534 349 204	.497 122 875	.573 498 476	.892 363 629	.902 016 282
.557	.532 498 294	.496 092 844	.572 925 234	.892 044 636	.901 838 763
.558	.530 655 861	.495 065 689	.572 352 625	.891 725 309	.901 660 783
.559	.528 821 855	.494 941 393	.571 780 550	.891 405 891	.901 482 342
.560	.526 996 226	.493 019 950	.571 209 064	.891 086 140	.901 303 442
.561	.525 178 925	.492 001 361	.570 638 149	.890 765 137	.901 121 089
.562	.523 369 960	.490 985 594	.570 067 787	.890 445 881	.900 944 253
.563	.521 560 102	.489 972 647	.569 498 005	.890 125 381	.900 763 975
.564	.519 776 484	.488 962 507	.568 928 791	.889 804 629	.900 583 232
.565	.517 991 997	.487 955 165	.568 360 147	.889 483 630	.900 402 927
.566	.516 215 594	.486 950 609	.567 792 071	.889 162 383	.900 229 362
.567	.514 447 225	.485 948 820	.567 224 562	.888 840 888	.900 058 236
.568	.512 686 843	.484 949 814	.566 657 621	.888 519 150	.900 885 649
.569	.510 934 404	.483 953 552	.566 091 247	.888 197 107	.900 672 601
.570	.509 189 858	.482 960 034	.565 525 439	.887 874 930	.900 480 093
.571	.507 453 161	.481 969 249	.564 960 196	.887 552 468	.900 305 123
.572	.505 724 265	.480 981 186	.564 395 518	.887 229 754	.900 129 692
.573	.504 003 126	.479 995 835	.563 831 495	.886 906 800	.900 955 801
.574	.502 289 698	.479 013 185	.563 267 655	.886 583 604	.900 750 448
.575	.500 583 937	.478 033 226	.562 704 869	.886 260 168	.900 561 634
.576	.498 885 798	.477 955 947	.562 142 445	.885 936 494	.900 378 359
.577	.497 195 236	.476 081 339	.561 580 584	.885 612 580	.900 191 623
.578	.495 512 208	.475 109 390	.561 019 284	.885 288 429	.900 004 426
.579	.493 836 670	.474 140 092	.560 458 545	.884 964 012	.900 816 768
.580	.492 168 578	.473 173 433	.559 898 367	.884 639 419	.900 628 649
.581	.490 507 890	.472 209 401	.559 338 748	.884 314 560	.900 440 068
.582	.488 854 563	.471 247 995	.558 779 689	.883 989 468	.900 251 027
.583	.487 208 554	.470 289 196	.558 221 188	.883 664 140	.900 061 521
.584	.485 569 823	.469 332 096	.557 663 246	.883 338 582	.900 871 560
.585	.483 938 325	.468 379 387	.557 105 862	.883 012 791	.900 681 135
.586	.482 314 022	.467 428 358	.556 549 034	.882 686 769	.900 490 249
.587	.480 696 879	.466 479 899	.555 992 761	.882 360 515	.900 298 902
.588	.479 086 839	.465 531 001	.555 437 049	.882 034 032	.900 107 094
.589	.477 483 861	.464 580 654	.554 881 889	.881 707 322	.900 914 824
.590	.475 887 922	.463 649 849	.554 327 285	.881 380 383	.900 722 003
.591	.474 298 973	.462 711 576	.553 773 235	.881 053 216	.900 528 961
.592	.472 716 976	.461 775 825	.553 219 738	.880 725 823	.900 335 218
.593	.471 141 890	.460 842 587	.552 666 795	.880 398 204	.900 141 131
.594	.469 573 676	.459 911 853	.552 114 404	.880 079 360	.900 946 559
.595	.468 012 296	.458 983 613	.551 562 566	.879 742 292	.900 754 522
.596	.466 457 711	.458 057 858	.551 011 279	.879 414 001	.900 556 925
.597	.464 909 882	.457 134 579	.550 460 543	.879 085 487	.900 360 060
.598	.463 368 772	.456 213 766	.549 910 358	.878 756 752	.900 163 617
.599	.461 834 343	.455 295 410	.549 360 722	.878 427 795	.900 966 766
.600	.460 306 557	.454 379 503	.548 811 636	.878 098 618	.900 769 424

TABLE I

$x$	$\int_x^{\infty} \frac{e^{-x}}{x^2} dx$	$\int_x^{\infty} \frac{e^{-x}}{x} dx$	$\int_x^{\infty} e^{-x} dx$	$\int_x^{\infty} x e^{-x} dx$	$\int_x^{\infty} x^2 e^{-x} dx$
.600	0.460 306 557	0.454 379 503	0.548 811 636	0.878 008 618	1.953 769 424
.601	.458 785 377	.453 406 035	.548 263 099	.877 769 221	.953 571 622
.602	.457 270 767	.452 554 997	.547 715 110	.877 439 606	.953 373 358
.603	.455 762 688	.451 646 381	.547 167 668	.877 109 772	.953 174 634
.604	.454 261 106	.450 740 176	.546 620 774	.876 779 722	.952 975 448
.605	.452 765 083	.449 836 375	.546 074 427	.876 449 455	.952 775 802
.606	.451 277 285	.448 934 068	.545 528 625	.876 118 972	.952 575 604
.607	.449 794 973	.448 035 948	.544 983 369	.875 788 274	.952 375 126
.608	.448 319 015	.447 139 304	.544 438 658	.875 457 362	.952 174 097
.609	.446 849 375	.446 245 023	.543 894 492	.875 126 237	.951 972 607
.610	.445 386 018	.445 353 112	.543 350 869	.874 794 899	.951 770 657
.611	.443 928 908	.444 463 547	.542 807 790	.874 463 349	.951 568 246
.612	.442 478 011	.443 570 324	.542 265 253	.874 131 588	.951 365 374
.613	.441 033 294	.442 691 435	.541 723 259	.873 799 617	.951 162 041
.614	.439 594 722	.441 808 872	.541 181 807	.873 467 496	.950 958 248
.615	.438 162 262	.440 928 625	.540 640 895	.873 135 046	.950 753 994
.616	.436 735 879	.440 050 687	.540 100 525	.872 802 448	.950 549 280
.617	.435 315 540	.439 175 050	.539 560 694	.872 469 642	.950 344 106
.618	.433 901 214	.438 301 704	.539 021 403	.872 136 630	.950 138 471
.619	.432 492 863	.437 430 641	.538 482 651	.871 803 412	.949 932 375
.620	.431 090 465	.436 561 854	.537 944 438	.871 469 989	.949 725 820
.621	.429 693 978	.435 695 333	.537 406 762	.871 136 361	.949 518 804
.622	.428 303 372	.434 831 072	.536 869 624	.870 802 530	.949 311 327
.623	.426 918 615	.433 969 062	.536 333 023	.870 468 496	.949 103 391
.624	.425 539 677	.433 109 294	.535 796 958	.870 134 259	.948 894 995
.625	.424 166 525	.432 251 761	.535 261 429	.869 799 821	.948 686 138
.626	.422 799 127	.431 396 455	.534 726 435	.869 465 183	.948 476 822
.627	.421 437 455	.430 543 367	.534 191 975	.869 130 344	.948 267 045
.628	.420 081 476	.429 692 490	.533 658 051	.868 795 305	.948 056 809
.629	.418 731 158	.428 843 817	.533 124 659	.868 460 079	.947 846 113
.630	.417 386 473	.427 997 338	.532 591 801	.868 124 636	.947 634 957
.631	.416 047 389	.427 153 047	.532 059 475	.867 789 001	.947 423 342
.632	.414 713 878	.426 310 935	.531 527 682	.867 453 177	.947 211 266
.633	.413 385 908	.425 470 995	.530 996 429	.867 117 154	.946 998 732
.634	.412 063 451	.424 633 219	.530 465 689	.866 780 936	.946 785 738
.635	.410 746 477	.423 797 599	.529 935 188	.866 441 523	.946 572 284
.636	.409 434 956	.422 964 128	.529 405 818	.866 107 918	.946 358 371
.637	.408 128 861	.422 132 798	.528 876 677	.865 771 118	.946 143 990
.638	.406 828 160	.421 303 602	.528 348 064	.865 431 129	.945 929 168
.639	.405 532 827	.420 476 532	.527 819 080	.865 096 948	.945 713 877
.640	.404 242 832	.419 651 581	.527 292 424	.864 759 575	.945 498 122
.641	.402 958 147	.418 828 741	.526 765 395	.864 422 014	.945 281 919
.642	.401 678 745	.418 008 004	.526 238 893	.864 084 262	.945 065 252
.643	.400 404 596	.417 189 365	.525 712 917	.863 746 323	.944 848 126
.644	.399 135 675	.416 372 814	.525 187 467	.863 408 196	.944 630 541
.645	.397 871 953	.415 558 345	.524 662 542	.863 069 882	.944 412 498
.646	.396 613 402	.414 745 951	.524 138 142	.862 731 381	.944 193 906
.647	.395 359 995	.413 935 624	.523 614 266	.862 392 605	.943 975 035
.648	.394 111 706	.413 127 357	.523 090 913	.862 053 825	.943 755 616
.649	.392 868 507	.412 321 144	.522 568 084	.861 714 770	.943 535 739
.650	.391 630 373	.411 516 976	.522 045 777	.861 375 532	.943 315 404

TABLE I

$x$	$\int_x^{\infty} \frac{e^{-x}}{x^2} dx$	$\int_x^{\infty} \frac{e^{-x}}{x} dx$	$\int_x^{\infty} e^{-x} dx$	$\int_x^{\infty} x e^{-x} dx$	$\int_x^{\infty} x^2 e^{-x} dx$
.650	0.391 630 373	0.411 516 976	0.522 045 777	0.861 375 532	1.943 315 404
.651	.390 397 276	.410 714 847	.521 523 002	.861 036 111	.943 004 611
.652	.389 160 190	.409 914 750	.521 002 729	.860 696 508	.942 873 359
.653	.387 946 089	.409 116 677	.520 481 986	.860 356 723	.942 651 650
.654	.386 727 948	.408 320 622	.519 961 704	.860 016 758	.942 429 483
.655	.385 514 740	.407 526 577	.519 442 063	.859 676 614	.942 206 858
.656	.384 306 439	.406 734 537	.518 922 880	.859 336 200	.941 983 776
.657	.383 103 021	.405 944 493	.518 404 217	.858 995 787	.941 760 236
.658	.381 904 480	.405 156 439	.517 886 072	.858 655 107	.941 536 238
.659	.380 710 730	.404 370 369	.517 368 444	.858 314 249	.941 311 784
.660	.379 521 808	.403 586 275	.516 851 334	.857 973 215	.941 086 872
.661	.378 337 668	.402 804 150	.516 334 731	.857 632 006	.940 861 503
.662	.377 158 284	.402 023 989	.515 818 665	.857 290 621	.940 635 677
.663	.375 983 635	.401 245 783	.515 303 104	.856 949 062	.940 409 394
.664	.374 813 603	.400 469 528	.514 788 058	.856 607 329	.940 182 654
.665	.373 648 436	.399 695 215	.514 273 528	.856 265 424	.939 955 458
.666	.372 487 840	.398 922 838	.513 759 511	.855 923 346	.939 727 805
.667	.371 331 880	.398 152 391	.513 246 009	.855 581 096	.939 499 696
.668	.370 180 533	.397 383 867	.512 733 019	.855 238 676	.939 271 132
.669	.369 033 775	.396 617 260	.512 220 542	.854 896 085	.939 042 108
.670	.367 891 583	.395 852 563	.511 708 578	.854 553 325	.938 812 630
.671	.366 753 933	.395 089 770	.511 197 125	.854 210 396	.938 582 696
.672	.365 620 804	.394 328 874	.510 686 183	.853 867 299	.938 352 307
.673	.364 492 171	.393 569 868	.510 175 752	.853 524 633	.938 121 461
.674	.363 368 012	.392 812 747	.509 665 832	.853 180 602	.937 890 160
.675	.362 248 303	.392 057 505	.509 156 421	.852 837 005	.937 658 403
.676	.361 133 024	.391 304 134	.508 647 519	.852 493 241	.937 426 191
.677	.360 022 151	.390 552 628	.508 139 125	.852 149 313	.937 193 521
.678	.358 915 661	.389 802 982	.507 631 240	.851 805 220	.936 960 401
.679	.357 813 534	.389 055 189	.507 123 863	.851 460 966	.936 726 824
.680	.356 715 746	.388 309 243	.506 616 992	.851 116 547	.936 492 792
.681	.355 622 277	.387 565 137	.506 110 629	.850 771 967	.936 258 305
.682	.354 533 103	.386 822 866	.505 604 771	.850 427 225	.936 023 363
.683	.353 448 205	.386 082 423	.505 099 419	.850 082 322	.935 787 967
.684	.352 367 560	.385 343 802	.504 594 572	.849 737 259	.935 552 116
.685	.351 291 147	.384 606 998	.504 090 230	.849 392 037	.935 315 812
.686	.350 218 945	.383 872 004	.503 586 391	.849 046 656	.935 079 053
.687	.349 150 934	.383 138 814	.503 083 057	.848 701 116	.934 841 810
.688	.348 087 090	.382 407 423	.502 580 225	.848 355 420	.934 604 174
.689	.347 027 396	.381 677 823	.502 077 896	.848 009 565	.934 366 051
.690	.345 971 820	.380 950 010	.501 576 069	.847 663 557	.934 127 480
.691	.344 920 369	.380 223 978	.501 074 744	.847 317 392	.933 888 453
.692	.343 872 906	.379 499 720	.500 573 910	.846 971 072	.933 648 973
.693	.342 829 689	.378 777 231	.500 073 596	.846 624 598	.933 409 039
.694	.341 790 430	.378 056 504	.499 573 772	.846 277 970	.933 168 653
.695	.340 755 196	.377 337 535	.499 074 448	.845 931 189	.932 927 814
.696	.339 723 969	.376 620 317	.498 575 623	.845 584 257	.932 686 522
.697	.338 696 729	.375 904 844	.498 077 297	.845 237 172	.932 444 778
.698	.337 673 456	.375 191 112	.497 579 468	.844 889 937	.932 202 581
.699	.336 654 131	.374 479 113	.497 082 137	.844 542 552	.931 959 933
.700	.335 638 734	.373 768 843	.496 585 304	.844 195 016	.931 716 832

TABLE I

$x$	$\int_x^{\infty} \frac{e^{-x}}{x^2} dx$	$\int_x^{\infty} \frac{e^{-x}}{x} dx$	$\int_x^{\infty} e^{-x} dx$	$\int_x^{\infty} x e^{-x} dx$	$\int_x^{\infty} x^2 e^{-x} dx$
.700	0.335 638 734	0.373 768 843	0.496 585 304	0.844 195 010	1.931 710 832
.701	.331 627 246	.373 060 296	.496 088 967	.843 817 332	.931 473 279
.702	.333 619 647	.372 353 467	.495 593 126	.843 499 500	.931 229 275
.703	.332 615 920	.371 648 348	.495 097 780	.843 151 520	.930 984 819
.704	.331 616 044	.370 944 936	.494 602 930	.842 803 393	.930 739 911
.705	.330 620 002	.370 243 224	.494 108 574	.842 455 119	.930 494 552
.706	.329 627 773	.369 543 208	.493 614 713	.842 106 700	.930 248 743
.707	.328 639 342	.368 844 880	.493 121 345	.841 758 134	.930 002 482
.708	.327 654 686	.368 148 237	.492 628 470	.841 409 425	.929 755 770
.709	.326 673 790	.367 453 273	.492 136 088	.841 060 573	.929 508 608
.710	.325 696 635	.366 759 981	.491 644 197	.840 711 578	.929 260 995
.711	.324 723 202	.366 068 358	.491 152 700	.840 362 438	.929 012 931
.712	.323 753 473	.365 378 397	.490 661 802	.840 013 159	.928 764 419
.713	.322 787 433	.364 690 092	.490 171 475	.839 663 737	.928 515 456
.714	.321 825 030	.364 002 440	.489 681 549	.839 311 174	.928 266 043
.715	.320 866 330	.363 318 433	.489 192 112	.838 964 472	.928 010 181
.716	.319 911 251	.362 635 068	.488 703 164	.838 614 630	.927 765 869
.717	.318 959 779	.361 953 330	.488 214 705	.838 264 648	.927 515 108
.718	.318 011 906	.361 273 240	.487 726 735	.837 914 530	.927 263 897
.719	.317 067 614	.360 594 767	.487 239 252	.837 564 274	.927 012 238
.720	.316 126 886	.359 917 914	.486 752 256	.837 213 880	.926 760 130
.721	.315 189 705	.359 242 676	.486 265 747	.836 863 351	.926 507 573
.722	.314 256 056	.358 569 047	.485 779 724	.836 512 685	.926 254 568
.723	.313 325 918	.357 897 024	.485 294 187	.836 161 885	.926 001 115
.724	.312 399 278	.357 226 600	.484 809 136	.835 810 930	.925 747 214
.725	.311 476 118	.356 557 770	.484 324 569	.835 459 882	.925 492 864
.726	.310 556 421	.355 890 530	.483 840 486	.835 108 680	.925 238 068
.727	.309 640 170	.355 224 875	.483 356 888	.834 757 345	.924 982 823
.728	.308 727 351	.354 560 798	.482 873 773	.834 405 878	.924 727 131
.729	.307 817 915	.353 898 297	.482 391 140	.834 054 281	.924 470 992
.730	.306 911 937	.353 237 364	.481 908 990	.833 702 553	.924 214 407
.731	.306 009 312	.352 577 906	.481 427 322	.833 350 694	.923 957 374
.732	.305 110 051	.351 920 188	.480 946 135	.832 998 706	.923 699 895
.733	.304 214 142	.351 263 934	.480 465 430	.832 646 589	.923 441 969
.734	.303 321 566	.350 609 230	.479 985 204	.832 294 344	.923 183 597
.735	.302 432 309	.349 956 071	.479 505 459	.831 941 971	.922 924 779
.736	.301 546 354	.349 304 452	.479 026 193	.831 589 471	.922 665 515
.737	.300 663 637	.348 651 368	.478 547 406	.831 236 845	.922 405 806
.738	.299 784 292	.348 005 814	.478 069 098	.830 884 093	.922 145 651
.739	.298 908 153	.347 358 786	.477 591 268	.830 531 215	.921 885 051
.740	.298 035 255	.346 713 279	.477 113 916	.830 178 213	.921 624 000
.741	.297 165 584	.346 069 288	.476 637 040	.829 825 087	.921 362 516
.742	.296 299 124	.345 426 808	.476 160 641	.829 471 837	.921 100 582
.743	.295 435 860	.344 785 834	.475 684 719	.829 118 465	.920 838 202
.744	.294 575 776	.344 146 363	.475 209 272	.828 764 970	.920 575 379
.745	.293 718 860	.343 508 388	.474 734 300	.828 411 352	.920 312 112
.746	.292 865 094	.342 871 907	.474 259 803	.828 057 616	.920 048 400
.747	.292 014 466	.342 236 913	.473 785 780	.827 703 757	.919 784 245
.748	.291 166 961	.341 603 402	.473 312 231	.827 349 780	.919 519 647
.749	.290 322 563	.340 971 370	.472 839 156	.826 995 683	.919 251 665
.750	.289 481 257	.340 340 813	.472 366 553	.826 641 467	.918 980 121

TABLE I.

$x$	$\int_x^\infty \frac{e^{-x}}{x^2} dx$	$\int_x^\infty \frac{e^{-x}}{x} dx$	$\int_x^\infty e^{-x} dx$	$\int_x^\infty xe^{-x} dx$	$\int_x^\infty x^2e^{-x} dx$
.750	0.289 481 257	0.340 340 813	0.472 366 553	0.826 641 467	1.918 980 121
.751	.288 643 032	.339 711 725	.471 804 422	.826 287 133	.918 723 193
.752	.287 807 871	.339 084 102	.471 422 764	.825 932 681	.918 456 823
.753	.286 975 761	.338 457 940	.470 951 577	.825 578 114	.918 190 010
.754	.286 146 688	.337 833 233	.470 480 860	.825 223 429	.917 922 755
.755	.285 320 638	.337 209 978	.470 010 615	.824 868 629	.917 655 058
.756	.284 497 595	.336 588 171	.469 540 839	.824 513 713	.917 388 920
.757	.283 677 549	.335 967 805	.469 071 533	.824 158 683	.917 118 539
.758	.282 860 483	.335 348 878	.468 602 093	.823 803 538	.916 849 318
.759	.282 046 385	.334 731 385	.468 134 327	.823 448 282	.916 579 855
.760	.281 235 241	.334 115 321	.467 666 427	.823 092 912	.916 309 952
.761	.280 427 037	.333 500 082	.467 198 904	.822 737 429	.916 039 607
.762	.279 621 760	.332 887 464	.466 732 029	.822 381 835	.915 768 822
.763	.278 819 397	.332 275 662	.466 265 530	.822 026 130	.915 497 507
.764	.278 019 933	.331 665 273	.465 799 498	.821 670 314	.915 225 931
.765	.277 223 357	.331 056 291	.465 333 931	.821 314 388	.914 953 826
.766	.276 429 656	.330 448 712	.464 868 830	.820 958 353	.914 681 281
.767	.275 638 815	.329 842 532	.464 404 193	.820 602 308	.914 408 297
.768	.274 850 821	.329 237 748	.463 940 021	.820 245 957	.914 134 874
.769	.274 065 633	.328 634 354	.463 476 313	.819 889 598	.913 861 011
.770	.273 283 327	.328 032 346	.463 013 038	.819 533 131	.913 586 710
.771	.272 503 800	.327 431 721	.462 550 287	.819 176 558	.913 311 979
.772	.271 727 060	.326 832 474	.462 087 968	.818 819 879	.913 036 792
.773	.270 953 123	.326 234 601	.461 626 111	.818 463 094	.912 761 176
.774	.270 181 948	.325 638 097	.461 164 715	.818 106 205	.912 485 122
.775	.269 413 533	.325 042 959	.460 703 781	.817 749 211	.912 208 631
.776	.268 647 863	.324 449 183	.460 243 307	.817 392 114	.911 931 702
.777	.267 884 927	.323 856 764	.459 783 294	.817 031 913	.911 651 336
.778	.267 124 714	.323 265 698	.459 323 741	.816 671 611	.911 370 533
.779	.266 367 210	.322 675 982	.458 864 647	.816 320 206	.911 088 294
.780	.265 612 401	.322 087 610	.458 406 011	.815 962 700	.910 819 618
.781	.264 860 284	.321 500 580	.457 947 834	.815 605 093	.910 510 505
.782	.264 110 836	.320 914 887	.457 490 115	.815 247 386	.910 260 957
.783	.263 364 019	.320 330 528	.457 032 854	.814 889 579	.909 980 974
.784	.262 619 913	.319 747 497	.456 576 050	.814 531 672	.909 700 553
.785	.261 878 415	.319 165 791	.456 119 702	.814 173 668	.909 419 699
.786	.261 139 542	.318 585 407	.455 663 810	.813 815 565	.909 138 409
.787	.260 403 284	.318 006 340	.455 208 374	.813 457 364	.908 856 084
.788	.259 669 629	.317 428 586	.454 753 393	.813 099 066	.908 574 525
.789	.258 938 564	.316 852 142	.454 298 867	.812 740 673	.908 291 931
.790	.258 210 079	.316 277 004	.453 844 795	.812 382 184	.908 008 904
.791	.257 484 162	.315 703 167	.453 391 177	.812 023 599	.907 725 442
.792	.256 760 802	.315 130 628	.452 938 013	.811 664 919	.907 441 547
.793	.256 039 989	.314 559 382	.452 485 301	.811 306 145	.907 157 219
.794	.255 321 708	.313 989 428	.452 033 042	.810 947 277	.906 872 458
.795	.254 605 952	.313 420 759	.451 581 235	.810 588 317	.906 587 263
.796	.253 892 707	.312 853 373	.451 129 879	.810 229 263	.906 301 636
.797	.253 181 962	.312 287 266	.450 678 975	.809 870 118	.906 015 578
.798	.252 473 709	.311 722 433	.450 228 521	.809 510 881	.905 729 086
.799	.251 767 934	.311 158 872	.449 778 518	.809 151 551	.905 442 163
.800	.251 064 627	.310 596 578	.449 328 964	.808 792 135	.905 154 808

TABLE I

$x$	$\int_x^{\infty} \frac{e^{-x}}{x^2} dx$	$\int_x^{\infty} \frac{e^{-x}}{x} dx$	$\int_x^{\infty} e^{-x} dx$	$\int_x^{\infty} x e^{-x} dx$	$\int_x^{\infty} x^2 e^{-x} dx$
.800	0.251 064 627	0.310 596 576	0.449 328 964	0.808 792 135	1.905 154 808
.801	.250 363 777	.310 035 549	.448 870 860	.808 432 627	.904 867 022
.802	.249 065 373	.309 475 779	.448 431 204	.808 073 030	.904 578 804
.803	.248 909 406	.308 917 265	.447 982 997	.807 713 344	.904 290 156
.804	.248 275 804	.308 360 004	.447 535 238	.807 353 570	.904 001 078
.805	.247 584 737	.307 803 002	.447 087 927	.806 993 708	.903 711 508
.806	.246 896 013	.307 249 225	.446 641 062	.806 633 758	.903 421 629
.807	.246 200 683	.306 695 700	.446 194 644	.806 273 722	.903 131 260
.808	.245 525 736	.306 143 413	.445 748 673	.805 913 600	.902 840 462
.809	.244 844 162	.305 592 361	.445 303 147	.805 553 393	.902 549 234
.810	.244 164 950	.305 042 539	.444 858 066	.805 193 100	.902 257 577
.811	.243 488 001	.304 493 044	.444 413 431	.804 832 723	.901 965 491
.812	.242 813 573	.303 946 574	.443 969 239	.804 472 261	.901 672 977
.813	.242 141 387	.303 400 423	.443 525 492	.804 111 717	.901 380 034
.814	.241 471 523	.302 855 489	.443 082 188	.803 751 088	.901 086 664
.815	.240 803 071	.302 311 768	.442 639 327	.803 390 379	.900 792 866
.816	.240 138 721	.301 769 256	.442 196 909	.803 029 587	.900 498 610
.817	.239 475 762	.301 227 951	.441 754 033	.802 668 714	.900 203 987
.818	.238 815 085	.300 687 848	.441 313 309	.802 307 760	.899 908 907
.819	.238 156 680	.300 148 944	.440 872 306	.801 946 726	.899 613 400
.820	.237 500 539	.299 611 235	.440 431 655	.801 585 611	.899 317 467
.821	.236 846 649	.299 074 710	.439 991 443	.801 224 418	.899 021 108
.822	.236 195 002	.298 539 392	.439 551 671	.800 863 145	.898 724 322
.823	.235 545 589	.298 005 249	.439 112 340	.800 501 795	.898 427 112
.824	.234 898 399	.297 472 289	.438 673 447	.800 140 367	.898 129 475
.825	.234 253 423	.296 940 507	.438 234 992	.799 778 801	.897 831 414
.826	.233 610 653	.296 409 900	.437 796 977	.799 417 270	.897 532 927
.827	.232 970 077	.295 880 465	.437 359 398	.799 055 621	.897 234 018
.828	.232 331 688	.295 352 108	.436 922 258	.798 693 887	.896 934 683
.829	.231 695 475	.294 825 006	.436 485 554	.798 332 078	.896 634 924
.830	.231 061 431	.294 299 155	.436 049 286	.797 970 194	.896 334 741
.831	.230 429 544	.293 774 373	.435 613 455	.797 608 236	.896 034 135
.832	.229 799 806	.293 250 746	.435 178 059	.797 246 205	.895 733 106
.833	.229 172 208	.292 728 271	.434 743 099	.796 884 100	.895 431 654
.834	.228 546 741	.292 206 944	.434 308 573	.796 521 923	.895 129 779
.835	.227 923 394	.291 686 763	.433 874 481	.796 159 673	.894 827 482
.836	.227 302 162	.291 167 723	.433 440 824	.795 797 352	.894 524 763
.837	.226 683 033	.290 649 822	.433 007 600	.795 434 959	.894 221 622
.838	.226 065 999	.290 133 056	.432 574 808	.795 072 498	.893 918 060
.839	.225 451 051	.289 617 423	.432 142 450	.794 709 965	.893 614 076
.840	.224 838 181	.289 102 918	.431 710 523	.794 347 363	.893 309 672
.841	.224 227 380	.288 589 539	.431 279 029	.793 984 692	.893 004 846
.842	.223 618 638	.288 077 283	.430 847 965	.793 621 952	.892 699 601
.843	.223 011 946	.287 566 147	.430 417 333	.793 259 144	.892 393 935
.844	.222 407 299	.287 056 126	.429 987 130	.792 896 268	.892 087 850
.845	.221 804 694	.286 547 210	.429 557 358	.792 533 326	.891 781 344
.846	.221 201 096	.286 039 421	.429 128 016	.792 170 317	.891 474 420
.847	.220 605 524	.285 533 731	.428 699 102	.791 807 241	.891 167 077
.848	.220 008 961	.285 027 144	.428 270 617	.791 444 101	.890 859 315
.849	.219 414 399	.284 522 657	.427 842 561	.791 080 894	.890 551 135
.850	.218 821 828	.284 019 268	.427 414 932	.790 717 624	.890 242 537



TABLE I

$x$	$\int_x^\infty \frac{e^{-x}}{x^2} dx$	$\int_x^\infty \frac{e^{-x}}{x} dx$	$\int_x^\infty e^{-x} dx$	$\int_x^\infty xe^{-x} dx$	$\int_x^\infty x^2e^{-x} dx$
.850	0.218 821 828	0.284 010 268	0.427 414 932	0.790 717 621	1.600 242 537
.851	.218 231 241	.283 516 074	.426 987 731	.790 351 290	.869 933 520
.852	.217 612 628	.283 015 771	.426 560 056	.789 980 891	.869 624 087
.853	.217 055 981	.282 515 050	.426 134 009	.789 627 430	.869 314 236
.854	.216 471 297	.282 016 627	.425 708 087	.789 264 906	.869 003 968
.855	.215 888 562	.281 518 070	.425 283 191	.788 900 319	.868 693 281
.856	.215 307 769	.281 021 811	.424 858 120	.788 536 072	.868 382 183
.857	.214 728 911	.280 526 010	.424 433 175	.788 172 063	.868 070 636
.858	.214 151 979	.280 031 300	.424 009 253	.787 809 193	.867 758 731
.859	.213 576 965	.279 537 652	.423 585 456	.787 445 363	.867 446 375
.860	.213 003 863	.279 045 070	.423 162 0	.787 081 473	.867 133 622
.861	.212 432 643	.278 553 553	.422 739 142	.786 717 521	.866 820 414
.862	.211 863 358	.278 063 097	.422 316 604	.786 353 516	.866 506 852
.863	.211 295 940	.277 573 609	.421 894 198	.785 989 451	.866 192 845
.864	.210 730 402	.277 085 356	.421 472 815	.785 625 327	.865 878 421
.865	.210 166 735	.276 598 036	.421 051 553	.785 261 145	.865 563 580
.866	.209 604 931	.276 111 826	.420 630 712	.784 896 908	.865 248 311
.867	.209 041 984	.275 626 632	.420 210 291	.784 532 613	.864 932 620
.868	.208 486 885	.275 142 482	.419 790 294	.784 168 263	.864 616 607
.869	.207 930 628	.274 659 372	.419 370 710	.783 803 858	.864 300 120
.870	.207 376 294	.274 177 301	.418 951 549	.783 439 397	.863 983 222
.871	.206 823 606	.273 696 264	.418 532 807	.783 074 882	.863 665 912
.872	.206 272 827	.273 216 260	.418 114 483	.782 710 313	.863 348 190
.873	.205 723 858	.272 737 285	.417 696 578	.782 345 690	.863 030 056
.874	.205 176 693	.272 259 337	.417 279 090	.781 981 015	.862 711 512
.875	.204 631 325	.271 782 412	.416 862 020	.781 616 287	.862 392 558
.876	.204 087 744	.271 306 509	.416 445 366	.781 251 507	.862 073 193
.877	.203 545 947	.270 831 623	.416 029 129	.780 886 675	.861 753 417
.878	.203 005 924	.270 357 752	.415 613 308	.780 521 792	.861 433 232
.879	.202 467 667	.269 884 895	.415 197 902	.780 156 858	.861 112 638
.880	.201 931 172	.269 413 046	.414 782 912	.779 791 874	.860 791 635
.881	.201 396 428	.268 942 205	.414 368 336	.779 426 840	.860 470 222
.882	.200 863 431	.268 472 368	.413 954 175	.779 061 757	.860 148 402
.883	.200 332 173	.268 003 532	.413 540 428	.778 696 625	.859 826 173
.884	.199 802 645	.267 535 696	.413 127 094	.778 331 445	.859 503 636
.885	.199 274 814	.267 068 855	.412 714 173	.777 966 217	.859 180 492
.886	.198 748 760	.266 603 007	.412 301 665	.777 600 941	.858 857 010
.887	.198 224 386	.266 138 150	.411 889 570	.777 235 618	.858 533 181
.888	.197 701 717	.265 674 281	.411 477 886	.776 870 249	.858 208 916
.889	.197 180 741	.265 211 398	.411 066 611	.776 504 831	.857 884 215
.890	.196 661 462	.264 749 496	.410 655 753	.776 139 373	.857 559 167
.891	.196 143 863	.264 288 575	.410 245 302	.775 773 867	.857 233 684
.892	.195 627 941	.263 828 631	.409 835 262	.775 408 316	.856 907 795
.893	.195 113 689	.263 369 661	.409 425 632	.775 042 721	.856 581 502
.894	.194 601 101	.262 911 663	.409 016 411	.774 677 082	.856 254 863
.895	.194 090 169	.262 451 634	.408 607 599	.774 311 399	.855 927 701
.896	.193 580 887	.261 998 572	.408 199 195	.773 945 674	.855 600 194
.897	.193 073 218	.261 543 475	.407 791 200	.773 579 907	.855 272 283
.898	.192 567 246	.261 089 338	.407 383 613	.773 214 097	.854 943 969
.899	.192 062 871	.260 636 161	.406 976 433	.772 848 246	.854 615 252
.900	.191 560 127	.260 183 939	.406 569 660	.772 482 353	.854 286 132

TABLE I

$x$	$\int_x^{\infty} \frac{e^{-x}}{x^2} dx$	$\int_x^{\infty} \frac{e^{-x}}{x} dx$	$\int_x^{\infty} e^{-x} dx$	$\int_x^{\infty} x e^{-x} dx$	$\int_x^{\infty} x^2 e^{-x} dx$
.900	0.191 560 127	0.200 183 930	0.405 500 660	0.772 482 353	1.874 286 132
.901	.191 058 906	.250 732 072	.406 163 293	.772 116 421	.873 956 609
.902	.190 559 478	.250 282 355	.405 757 333	.771 750 447	.873 626 685
.903	.190 061 563	.250 832 987	.405 351 778	.771 384 431	.873 296 357
.904	.189 565 246	.250 384 565	.404 946 629	.771 018 382	.872 965 620
.905	.189 070 521	.250 937 087	.404 541 885	.770 652 291	.872 634 500
.906	.188 577 382	.250 490 549	.404 137 545	.770 286 162	.872 302 909
.907	.188 085 822	.250 044 050	.403 733 610	.769 919 901	.871 971 039
.908	.187 595 831	.250 600 287	.403 330 078	.769 553 789	.871 638 707
.909	.187 107 111	.250 156 557	.402 926 050	.769 187 517	.871 305 976
.910	.186 620 554	.250 713 758	.402 524 221	.768 821 268	.870 972 846
.911	.186 135 249	.250 271 887	.402 121 901	.768 451 953	.870 639 316
.912	.185 651 492	.250 830 942	.401 719 980	.768 084 602	.870 305 387
.913	.185 169 277	.250 390 921	.401 318 461	.767 722 216	.869 971 090
.914	.184 688 598	.250 951 821	.400 917 343	.767 355 795	.869 636 331
.915	.184 209 449	.250 513 640	.400 516 626	.766 989 330	.869 301 210
.916	.183 731 824	.250 076 374	.400 116 310	.766 622 849	.868 965 689
.917	.183 255 717	.250 640 923	.399 716 393	.766 256 326	.868 629 770
.918	.182 781 123	.250 204 582	.399 316 877	.765 889 770	.868 293 455
.919	.182 308 033	.250 770 051	.398 917 759	.765 523 180	.867 956 713
.920	.181 836 446	.250 336 425	.398 519 041	.765 156 559	.867 619 634
.921	.181 366 352	.250 903 704	.398 120 721	.764 789 995	.867 282 130
.922	.180 897 747	.250 471 884	.397 722 800	.764 423 221	.866 944 230
.923	.180 430 624	.250 040 964	.397 325 276	.764 056 505	.866 605 934
.924	.179 964 970	.249 610 940	.396 928 149	.763 689 758	.866 267 241
.925	.179 500 801	.249 181 811	.396 531 419	.763 322 982	.865 928 159
.926	.179 038 065	.248 753 574	.396 135 080	.762 956 175	.865 588 680
.927	.178 576 816	.248 326 227	.395 739 149	.762 589 340	.865 248 806
.928	.178 117 051	.247 899 767	.395 343 607	.762 222 475	.864 908 539
.929	.177 658 704	.247 474 193	.394 948 461	.761 855 581	.864 567 870
.930	.177 201 800	.247 049 501	.394 553 710	.761 488 661	.864 226 826
.931	.176 746 334	.246 625 689	.394 159 351	.761 121 712	.863 885 389
.932	.176 292 299	.246 202 756	.393 765 392	.760 754 736	.863 543 542
.933	.175 839 691	.245 780 698	.393 371 823	.760 387 734	.863 201 312
.934	.175 388 503	.245 359 514	.392 978 648	.760 020 705	.862 858 691
.935	.174 938 729	.244 939 202	.392 585 866	.759 653 619	.862 515 678
.936	.174 490 366	.244 519 758	.392 193 176	.759 286 569	.862 172 271
.937	.174 043 403	.244 101 181	.391 801 478	.758 919 461	.861 828 480
.938	.173 597 846	.243 683 468	.391 409 873	.758 552 333	.861 481 295
.939	.173 153 680	.243 266 617	.391 018 659	.758 185 179	.861 139 721
.940	.172 710 800	.242 850 627	.390 627 835	.757 818 001	.860 794 757
.941	.172 269 505	.242 435 493	.390 237 493	.757 450 799	.860 449 403
.942	.171 829 485	.242 021 216	.389 847 390	.757 083 574	.860 103 661
.943	.171 390 839	.241 607 791	.389 457 798	.756 716 326	.859 757 539
.944	.170 953 558	.241 195 248	.389 068 445	.756 349 057	.859 411 011
.945	.170 517 640	.240 783 493	.388 679 571	.755 981 765	.859 064 105
.946	.170 083 078	.240 372 615	.388 291 086	.755 614 453	.858 716 810
.947	.169 649 867	.239 962 581	.387 902 989	.755 247 119	.858 369 129
.948	.169 218 003	.239 553 389	.387 515 279	.754 879 764	.858 021 061
.949	.168 787 478	.239 145 038	.387 127 958	.754 512 390	.857 672 606
.950	.168 358 290	.238 737 521	.386 741 023	.754 144 996	.857 323 765

TABLE I

$x$	$\int_x^{\infty} \frac{e^{-x}}{x^2} dx$	$\int_x^{\infty} \frac{e^{-x}}{x} dx$	$\int_x^{\infty} e^{-x} dx$	$\int_x^{\infty} x e^{-x} dx$	$\int_x^{\infty} x^2 e^{-x} dx$
.950	0.168 358 290	0.234 737 521	0.386 711 023	0.751 111 906	1.857 323 765
.951	.167 940 433	.234 340 845	.386 354 476	.753 777 582	.856 974 539
.952	.167 503 902	.237 925 000	.385 988 314	.753 110 150	.856 624 027
.953	.167 078 060	.237 519 987	.385 582 539	.753 012 609	.856 274 929
.954	.166 654 795	.237 115 802	.385 197 149	.752 675 230	.855 924 548
.955	.166 232 209	.236 712 415	.384 812 145	.752 307 743	.855 573 781
.956	.165 810 930	.236 309 912	.384 427 525	.751 940 238	.855 222 631
.957	.165 390 951	.235 908 202	.384 043 289	.751 572 717	.854 871 007
.958	.164 972 267	.235 507 313	.383 659 438	.751 205 180	.854 519 180
.959	.164 554 874	.235 107 243	.383 275 970	.750 837 625	.854 166 880
.960	.164 138 768	.234 707 988	.382 892 886	.750 470 057	.853 814 197
.961	.163 723 943	.234 309 548	.382 510 184	.750 102 472	.853 461 132
.962	.163 310 393	.233 911 920	.382 127 865	.749 734 872	.853 107 684
.963	.162 898 115	.233 515 103	.381 745 929	.749 367 258	.852 753 856
.964	.162 487 104	.233 119 093	.381 364 373	.748 999 630	.852 399 646
.965	.162 077 353	.232 723 890	.380 983 200	.748 631 986	.852 045 055
.966	.161 668 861	.232 329 490	.380 602 407	.748 264 332	.851 690 084
.967	.161 261 620	.231 935 893	.380 221 965	.747 896 664	.851 334 732
.968	.160 855 627	.231 543 095	.379 841 963	.747 528 983	.850 979 001
.969	.160 450 878	.231 151 091	.379 462 311	.747 161 290	.850 622 890
.970	.160 047 366	.230 759 890	.379 083 038	.746 793 585	.850 266 401
.971	.159 645 088	.230 369 479	.378 704 145	.746 425 869	.849 909 532
.972	.159 244 039	.229 979 860	.378 325 630	.746 058 142	.849 552 285
.973	.158 844 214	.229 591 631	.377 947 493	.745 690 401	.849 194 660
.974	.158 445 609	.229 202 989	.377 569 735	.745 322 656	.848 836 658
.975	.158 048 219	.228 815 733	.377 192 351	.744 954 898	.848 478 278
.976	.157 652 050	.228 429 251	.376 815 350	.744 587 130	.848 119 521
.977	.157 257 067	.228 043 570	.376 438 723	.744 219 355	.847 760 387
.978	.156 863 297	.227 658 658	.376 062 472	.743 851 570	.847 400 878
.979	.156 470 723	.227 274 525	.375 686 598	.743 483 777	.847 040 992
.980	.156 079 342	.226 891 167	.375 311 099	.743 115 976	.846 680 731
.981	.155 689 149	.226 508 583	.374 935 975	.742 748 167	.846 320 094
.982	.155 300 140	.226 126 771	.374 561 227	.742 380 352	.845 959 083
.983	.154 912 310	.225 745 729	.374 186 853	.742 012 529	.845 597 698
.984	.154 525 657	.225 365 451	.373 812 853	.741 644 700	.845 235 938
.985	.154 140 173	.224 985 916	.373 439 227	.741 276 865	.844 873 805
.986	.153 755 998	.224 607 201	.373 065 974	.740 909 025	.844 511 298
.987	.153 372 701	.224 229 219	.372 693 095	.740 541 179	.844 148 119
.988	.152 990 703	.223 851 997	.372 320 588	.740 173 329	.843 785 166
.989	.152 609 800	.223 475 533	.371 948 451	.739 805 474	.843 421 542
.990	.152 230 165	.223 099 826	.371 576 691	.739 437 615	.843 057 515
.991	.151 851 615	.222 724 873	.371 205 300	.739 069 752	.842 693 177
.992	.151 474 207	.222 350 672	.370 834 280	.738 701 886	.842 328 438
.993	.151 097 935	.221 977 222	.370 463 631	.738 334 017	.841 963 328
.994	.150 722 796	.221 604 521	.370 093 353	.737 966 146	.841 597 847
.995	.150 348 784	.221 232 567	.369 723 445	.737 598 272	.841 231 997
.996	.149 975 897	.220 861 358	.369 353 906	.737 230 396	.840 865 777
.997	.149 604 130	.220 490 892	.368 984 737	.736 862 519	.840 499 187
.998	.149 233 479	.220 121 167	.368 615 936	.736 494 641	.840 132 228
.999	.148 863 939	.219 752 182	.368 247 505	.736 126 762	.839 764 901
1.000	.148 495 507	.219 383 934	.367 879 441	.735 758 882	.839 397 206

TABLE II.

$x$	$\int_x^{\infty} \frac{e^{-x}}{x^2} dx$	$\int_x^{\infty} \frac{e^{-x}}{x} dx$	$\int_x^{\infty} e^{-x} dx$	$\int_x^{\infty} x e^{-x} dx$	$\int_x^{\infty} x^2 e^{-x} dx$
1.00	.148 495 507	0.219 383 934	.367 879 441	0.735 758 882	1.830 307 200
1.04	.144 871 228	.215 741 623	.364 218 080	.732 080 149	.835 700 079
1.02	.141 353 308	.212 171 083	.360 594 940	.728 401 779	.811 000 514
1.03	.137 938 141	.208 670 550	.357 003 901	.724 724 130	.828 196 041
1.04	.134 621 920	.205 238 351	.353 454 682	.721 047 551	.824 301 080
1.05	.131 401 234	.201 872 813	.349 937 749	.717 372 380	.820 551 140
1.06	.128 272 758	.198 572 346	.346 455 810	.713 698 909	.816 975 687
1.07	.125 233 305	.195 335 403	.343 008 517	.710 027 631	.812 765 714
1.08	.122 279 823	.192 160 479	.339 595 526	.706 358 093	.808 821 008
1.09	.119 409 381	.189 046 118	.336 216 494	.702 692 472	.80 843 760
1.10	.116 619 171	.185 969 905	.332 871 081	.699 029 276	.800 832 503
1.11	.113 906 500	.182 933 465	.329 558 901	.695 369 408	.790 788 412
1.12	.111 268 778	.180 052 467	.326 279 795	.691 713 165	.792 711 704
1.13	.108 703 523	.177 160 615	.323 033 258	.688 060 836	.788 602 857
1.14	.106 208 351	.174 334 651	.319 819 022	.684 412 707	.784 462 214
1.15	.103 780 967	.171 555 354	.316 630 769	.680 769 054	.780 290 236
1.16	.101 419 173	.168 827 535	.313 486 184	.677 130 151	.776 087 306
1.17	.099 120 860	.166 150 040	.310 380 914	.673 493 201	.771 853 811
1.18	.096 883 963	.163 521 748	.307 278 739	.669 867 050	.767 590 216
1.19	.094 706 554	.160 944 507	.304 221 264	.666 241 568	.763 296 869
1.20	.092 588 740	.158 408 437	.301 194 212	.662 627 266	.758 974 198
1.21	.090 522 708	.155 921 325	.298 197 279	.659 015 988	.754 622 612
1.22	.088 512 714	.153 479 220	.295 230 167	.655 410 971	.750 242 522
1.23	.086 555 078	.151 081 164	.292 292 578	.651 812 418	.745 831 337
1.24	.084 648 181	.148 726 188	.289 384 218	.648 220 648	.741 388 470
1.25	.082 790 464	.146 413 373	.286 504 797	.644 635 793	.736 935 371
1.26	.080 980 428	.144 141 815	.283 651 027	.641 058 400	.732 445 332
1.27	.079 216 622	.141 910 639	.280 831 622	.637 487 781	.727 928 886
1.28	.077 497 652	.139 718 989	.278 037 300	.633 925 045	.723 383 401
1.29	.075 822 172	.137 560 032	.275 270 783	.630 370 093	.718 818 297
1.30	.074 188 883	.135 450 058	.272 531 701	.626 823 124	.714 224 978
1.31	.072 596 534	.133 372 975	.269 820 056	.623 284 330	.709 606 859
1.32	.071 043 915	.131 331 344	.267 135 302	.619 753 904	.704 964 351
1.33	.069 529 860	.129 325 224	.264 477 261	.616 232 019	.700 297 865
1.34	.068 053 213	.127 353 972	.261 845 680	.612 718 891	.695 607 841
1.35	.066 612 979	.125 416 844	.259 240 261	.609 211 613	.690 894 600
1.36	.065 208 014	.123 513 146	.256 660 777	.605 719 434	.686 158 640
1.37	.063 837 335	.121 642 198	.254 108 960	.602 233 191	.681 400 341
1.38	.062 499 961	.119 803 338	.251 578 553	.598 756 950	.676 620 109
1.39	.061 199 048	.117 995 919	.249 075 305	.595 289 978	.671 818 352
1.40	.059 921 376	.116 219 313	.246 596 964	.591 832 713	.666 995 476
1.41	.058 678 302	.114 472 901	.244 143 283	.588 385 312	.662 151 886
1.42	.057 465 049	.112 756 690	.241 714 017	.584 947 924	.657 287 985
1.43	.056 280 610	.111 068 287	.239 308 922	.581 520 681	.652 404 177
1.44	.055 121 243	.109 408 921	.236 927 759	.578 103 731	.647 500 863
1.45	.053 995 172	.107 777 440	.234 570 288	.574 697 206	.642 578 442
1.46	.052 892 650	.106 173 292	.232 239 275	.571 301 230	.637 637 315
1.47	.051 815 919	.104 595 916	.229 925 485	.567 915 018	.632 677 878
1.48	.050 761 367	.103 044 882	.227 637 688	.564 541 467	.627 700 527
1.49	.049 727 223	.101 519 593	.225 372 656	.561 177 912	.622 705 657
1.50	.048 733 858	.100 019 582	.223 130 160	.557 825 405	.617 693 661

TABLE II.

$x$	$\int_x^{\infty} \frac{e^{-x}}{x^2} dx$	$\int_x^{\infty} \frac{e^{-x}}{x} dx$	$\int_x^{\infty} e^{-x} dx$	$\int_x^{\infty} x e^{-x} dx$	$\int_x^{\infty} x^2 e^{-x} dx$
1.50	0.048 733 858	0.100 019 582	0.223 130 160	0.557 825 400	1.017 093 601
1.51	.017 753 631	.008 541 305	.220 900 078	.554 484 045	.612 661 030
1.52	.040 795 033	.017 093 406	.218 711 887	.551 153 055	.607 019 851
1.53	.045 860 156	.005 066 121	.216 535 067	.547 835 238	.602 558 820
1.54	.044 045 721	.004 262 780	.214 381 101	.544 527 008	.597 482 215
1.55	.011 052 000	.002 882 108	.212 247 074	.541 232 333	.592 300 424
1.56	.013 178 651	.001 523 050	.210 136 071	.537 948 312	.587 283 827
1.57	.012 324 038	.000 187 017	.208 045 182	.534 676 110	.582 162 807
1.58	.011 490 420	.088 873 500	.205 975 098	.531 415 753	.577 027 742
1.59	.040 674 508	.087 580 504	.203 925 012	.528 167 331	.571 870 008
1.60	.030 876 000	.086 308 334	.201 891 518	.524 930 047	.566 716 080
1.61	.039 097 128	.085 056 070	.199 867 614	.521 706 673	.561 512 000
1.62	.038 334 558	.083 825 133	.197 858 600	.518 494 502	.556 354 529
1.63	.037 588 839	.082 613 351	.195 820 571	.515 291 780	.551 151 845
1.64	.036 859 514	.081 420 070	.193 860 042	.512 107 312	.545 913 345
1.65	.036 116 257	.080 247 627	.192 049 009	.508 932 258	.540 720 302
1.66	.035 448 576	.079 092 078	.190 138 080	.505 769 087	.535 486 348
1.67	.034 766 110	.077 950 681	.188 247 066	.502 617 065	.530 241 572
1.68	.034 068 477	.076 838 413	.186 373 076	.500 482 256	.524 986 422
1.69	.033 445 311	.075 737 830	.184 519 524	.498 357 520	.519 721 252
1.70	.032 806 253	.074 654 631	.182 683 524	.496 245 515	.514 446 411
1.71	.032 180 051	.073 588 518	.180 865 793	.494 146 208	.509 162 260
1.72	.031 569 070	.072 539 155	.179 066 148	.492 059 922	.503 869 137
1.73	.030 970 283	.071 500 255	.177 284 410	.489 984 439	.498 567 390
1.74	.030 384 266	.070 489 527	.175 520 401	.487 925 898	.493 257 330
1.75	.029 810 711	.069 488 685	.173 773 043	.485 878 344	.487 939 391
1.76	.029 249 317	.068 503 447	.172 041 861	.483 843 821	.482 613 818
1.77	.028 699 788	.067 533 539	.170 332 989	.481 822 379	.477 280 979
1.78	.028 161 841	.066 578 001	.168 638 147	.479 814 049	.471 941 265
1.79	.027 635 197	.065 638 041	.166 969 170	.477 818 873	.466 594 826
1.80	.027 119 587	.064 713 129	.165 298 888	.475 836 887	.461 242 172
1.81	.026 611 747	.063 801 003	.163 654 137	.473 868 124	.455 883 500
1.82	.026 120 423	.062 901 745	.162 025 751	.471 912 618	.450 519 333
1.83	.025 636 366	.062 021 321	.160 413 508	.469 969 367	.445 149 701
1.84	.025 162 236	.061 151 483	.158 817 426	.468 041 400	.439 775 258
1.85	.024 698 095	.060 294 068	.157 237 166	.466 125 921	.434 396 050
1.86	.024 243 418	.059 451 515	.155 672 030	.464 223 723	.429 012 478
1.87	.023 798 676	.058 620 004	.154 123 662	.462 334 000	.423 624 852
1.88	.023 361 859	.057 803 091	.152 590 100	.460 459 505	.418 233 479
1.89	.022 931 551	.056 997 623	.151 071 809	.458 597 528	.412 838 663
1.90	.022 515 948	.056 201 378	.149 568 619	.456 748 006	.407 440 707
1.91	.022 105 850	.055 423 148	.148 080 367	.454 913 925	.402 039 908
1.92	.021 701 062	.054 653 731	.146 606 062	.453 092 329	.396 636 561
1.93	.021 310 393	.053 895 927	.145 148 198	.451 284 222	.391 230 068
1.94	.020 924 661	.053 149 540	.143 703 050	.449 489 612	.385 823 410
1.95	.020 546 682	.052 414 380	.142 274 672	.447 708 511	.380 414 180
1.96	.020 176 281	.051 690 257	.140 858 421	.445 940 925	.375 003 562
1.97	.019 813 204	.050 976 988	.139 456 856	.444 186 863	.369 591 839
1.98	.019 457 540	.050 271 392	.138 069 237	.442 446 327	.364 179 292
1.99	.019 108 879	.049 582 230	.136 695 425	.440 719 322	.358 766 198
2.00	.018 767 131	.048 900 511	.135 335 283	.406 005 850	.353 352 832

TABLE III.

$x$	$\frac{e^x - 1}{x}$	$x$	$\frac{e^{-x} - 1}{x}$	$x$	$\frac{e^x}{x}$	$x$	$\frac{e^{-x}}{x}$
.000	1.000 000 000	.050	0.975 411 510	.100	9.048 374 180	.150	5.788 053 176
.001	0.999 500 167	.051	.971 924 029	.101	8.949 832 009	.151	.604 355 620
.002	.999 000 667	.052	.974 444 808	.102	.853 230 809	.152	.651 238 689
.003	.998 501 499	.053	.973 982 029	.103	.738 514 306	.153	.698 010 902
.004	.998 002 094	.054	.973 470 500	.104	.665 627 800	.154	.696 701 435
.005	.997 504 161	.055	.972 907 310	.105	.574 510 263	.155	.525 250 210
.006	.997 005 901	.056	.972 515 431	.106	.485 138 180	.156	.484 353 784
.007	.996 508 133	.057	.972 033 871	.107	.397 436 196	.157	.443 974 807
.008	.996 010 615	.058	.971 552 630	.108	.311 360 634	.158	.404 112 511
.009	.995 513 470	.059	.971 071 709	.109	.23 91 563	.159	.364 753 975
.010	.995 016 625	.060	.970 591 107	.110	.141 046 685	.160	.325 608 691
.011	.994 520 111	.061	.970 110 823	.111	.062 511 252	.161	.287 528 392
.012	.994 023 928	.062	.969 630 858	.112	7.982 538 013	.162	.249 637 065
.013	.993 528 076	.063	.969 151 211	.113	.003 988 142	.163	.212 215 880
.014	.993 032 553	.064	.968 671 882	.114	.828 824 171	.164	.175 256 231
.015	.992 537 390	.065	.968 192 871	.115	.751 009 947	.165	.138 740 722
.016	.992 042 497	.066	.967 714 177	.116	.676 510 546	.166	.102 688 158
.017	.991 547 065	.067	.967 235 801	.117	.603 292 219	.167	.067 063 541
.018	.991 053 758	.068	.966 757 742	.118	.531 322 480	.168	.031 868 064
.019	.990 559 882	.069	.966 279 990	.119	.460 509 754	.169	4.997 094 103
.020	.990 064 335	.070	.965 802 573	.120	.391 003 689	.170	.962 734 215
.021	.989 573 116	.071	.965 325 403	.121	.322 594 707	.171	.928 781 133
.022	.989 080 225	.072	.964 848 600	.122	.255 314 406	.172	.895 227 751
.023	.988 587 062	.073	.964 372 191	.123	.189 135 408	.173	.862 067 138
.024	.988 095 427	.074	.963 896 029	.124	.124 030 975	.174	.829 292 515
.025	.987 603 519	.075	.963 420 182	.125	.059 975 221	.175	.798 897 262
.026	.987 111 938	.076	.962 944 651	.126	6.906 043 228	.176	.764 874 905
.027	.986 620 684	.077	.962 469 431	.127	.494 940 808	.177	.733 210 122
.028	.986 129 757	.078	.961 994 533	.128	.473 854 525	.178	.701 923 727
.029	.985 639 158	.079	.961 519 944	.129	.413 751 671	.179	.670 082 678
.030	.985 148 882	.080	.961 045 670	.130	.354 580 238	.180	.640 390 063
.031	.984 658 933	.081	.960 573 711	.131	.306 318 888	.181	.610 140 103
.032	.984 169 339	.082	.960 103 065	.132	.268 046 932	.182	.580 227 145
.033	.983 680 912	.083	.959 624 732	.133	.232 414 302	.183	.550 045 690
.034	.983 191 010	.084	.959 151 713	.134	.200 791 527	.184	.521 390 238
.035	.982 702 393	.085	.958 679 007	.135	.171 069 716	.185	.492 455 588
.036	.982 214 079	.086	.958 206 634	.136	.147 960 523	.186	.463 836 532
.037	.981 724 072	.087	.957 734 533	.137	.126 746 179	.187	.435 528 002
.038	.981 234 398	.088	.957 262 765	.138	.107 300 360	.188	.407 525 038
.039	.980 743 018	.089	.956 793 308	.139	.089 633 288	.189	.379 822 787
.040	.980 251 023	.090	.956 320 164	.140	.074 701 683	.190	.352 416 494
.041	.979 757 338	.091	.955 849 333	.141	.061 498 665	.191	.325 301 509
.042	.979 260 930	.092	.955 378 809	.142	.050 008 819	.192	.298 473 273
.043	.978 761 882	.093	.954 908 599	.143	.040 237 265	.193	.271 927 327
.044	.978 261 138	.094	.954 438 709	.144	.031 109 362	.194	.245 659 300
.045	.977 763 737	.095	.953 969 111	.145	5.965 670 987	.195	.219 664 013
.046	.977 264 648	.096	.953 499 833	.146	.491 888 378	.196	.193 939 073
.047	.976 763 881	.097	.953 030 865	.147	.427 748 146	.197	.168 480 372
.048	.976 261 436	.098	.952 562 297	.148	.372 237 263	.198	.143 282 087
.049	.975 758 310	.099	.952 093 858	.149	.323 343 053	.199	.118 341 173
.050	.975 251 510	.100	.951 625 820	.150	.280 053 170	.200	.093 653 765

TABLE III.

$x$	$\frac{e^{-x}}{x}$	$x$	$\frac{e^{-x}}{x}$	$x$	$\frac{e^{-x}}{x}$	$x$	$\frac{e^{-x}}{x}$
.200	4.003 053 765	.250	3.115 203 132	.300	2.400 304 000	.350	2.013 301 542
.201	.000 210 077	.251	.000 000 723	.301	.458 730 112	.351	.005 051 720
.202	.045 024 300	.252	.081 304 510	.302	.148 130 288	.352	1.007 054 802
.203	.021 075 081	.253	.000 013 011	.303	.437 020 780	.353	.000 303 004
.204	3.107 304 505	.254	.053 004 732	.304	.427 173 003	.354	.082 007 618
.205	.073 800 348	.255	.038 888 227	.305	.116 707 010	.355	.075 136 400
.206	.050 610 001	.256	.023 002 000	.306	.100 402 220	.356	.007 010 720
.207	.027 031 150	.257	.000 214 840	.307	.300 250 020	.357	.000 117 052
.208	.004 841 523	.258	2.001 555 103	.308	.380 088 035	.358	.052 718 087
.209	.882 273 855	.259	.080 011 072	.309	.375 080 517	.359	.015 332 455
.210	.850 024 081	.260	.005 583 022	.310	.305 057 023	.360	.037 080 795
.211	.837 701 786	.261	.051 207 801	.311	.355 083 170	.361	.030 080 710
.212	.815 871 215	.262	.037 001 076	.312	.340 004 612	.362	.023 431 055
.213	.791 100 200	.263	.022 072 004	.313	.330 201 701	.363	.010 210 070
.214	.772 050 005	.264	.008 000 081	.314	.320 403 720	.364	.000 041 744
.215	.751 355 530	.265	.805 110 702	.315	.310 700 077	.365	.001 008 633
.216	.730 250 027	.266	.881 350 103	.316	.307 150 150	.366	.804 810 307
.217	.700 354 007	.267	.807 000 400	.317	.297 573 357	.367	.887 704 700
.218	.688 018 815	.268	.854 133 512	.318	.288 050 010	.368	.880 734 211
.219	.608 135 000	.269	.840 081 218	.319	.278 006 758	.369	.873 781 000
.220	.617 812 718	.270	.827 331 101	.320	.269 215 711	.370	.806 810 512
.221	.627 077 286	.271	.814 083 013	.321	.250 885 517	.371	.850 050 716
.222	.607 720 800	.272	.800 034 783	.322	.250 015 408	.372	.853 102 802
.223	.587 058 065	.273	.787 885 000	.323	.241 405 122	.373	.840 287 488
.224	.568 371 130	.274	.774 031 581	.324	.232 253 835	.374	.830 510 450
.225	.548 000 072	.275	.762 080 448	.325	.223 161 088	.375	.832 771 410
.226	.529 726 114	.276	.749 322 213	.326	.214 120 312	.376	.826 070 035
.227	.510 004 230	.277	.736 658 831	.327	.205 119 061	.377	.810 400 032
.228	.491 773 000	.278	.724 080 280	.328	.196 228 710	.378	.812 770 102
.229	.473 050 365	.279	.711 612 556	.329	.187 361 703	.379	.806 188 952
.230	.454 403 024	.280	.699 227 648	.330	.178 550 768	.380	.799 635 287
.231	.436 101 585	.281	.686 033 578	.331	.169 804 136	.381	.793 117 821
.232	.417 871 221	.282	.674 720 378	.332	.161 100 304	.382	.786 630 205
.233	.399 800 745	.283	.662 614 001	.333	.152 463 046	.383	.780 100 338
.234	.381 888 102	.284	.650 580 777	.334	.143 873 506	.384	.773 770 758
.235	.364 131 275	.285	.638 616 506	.335	.135 337 571	.385	.767 404 250
.236	.346 528 275	.286	.626 702 303	.336	.126 851 482	.386	.761 003 538
.237	.329 077 165	.287	.615 023 110	.337	.118 423 857	.387	.754 757 351
.238	.311 776 013	.288	.603 338 802	.338	.110 045 230	.388	.748 485 421
.239	.294 622 038	.289	.591 737 735	.339	.101 718 139	.389	.742 247 481
.240	.277 616 088	.290	.580 219 109	.340	.093 442 122	.390	.736 043 268
.241	.260 753 036	.291	.568 782 300	.341	.085 216 746	.391	.729 872 522
.242	.244 033 702	.292	.557 426 493	.342	.077 041 524	.392	.723 734 085
.243	.227 454 785	.293	.546 150 051	.343	.068 916 060	.393	.717 630 401
.244	.211 014 805	.294	.534 954 053	.344	.060 830 007	.394	.711 558 518
.245	.194 712 401	.295	.523 835 800	.345	.052 812 618	.395	.705 519 087
.246	.178 545 030	.296	.512 705 365	.346	.044 833 777	.396	.699 511 858
.247	.162 512 020	.297	.501 831 091	.347	.036 902 003	.397	.693 536 588
.248	.146 612 075	.298	.490 944 003	.348	.029 019 750	.398	.687 593 034
.249	.130 843 267	.299	.480 131 804	.349	.021 183 754	.399	.681 680 950
.250	.115 203 132	.300	.469 304 000	.350	.013 304 542	.400	.675 800 115

TABLE III.

$x$	$\frac{e^{-x}}{x}$	$x$	$\frac{e^{-x}}{x}$	$x$	$\frac{e^{-x}}{x}$	$x$	$\frac{e^{-x}}{x}$
.400	1.675 800 115	.450	1.416 951 448	.500	1.213 081 319	.550	1.048 099 655
.401	.669 950 277	.451	.412 396 546	.501	.209 430 004	.551	.046 049 272
.402	.664 131 208	.452	.407 863 207	.502	.205 814 364	.552	.043 110 623
.403	.658 312 678	.453	.403 351 288	.503	.202 214 303	.553	.040 183 643
.404	.652 584 459	.454	.398 860 616	.504	.198 629 728	.554	.037 268 268
.405	.646 856 323	.455	.394 391 138	.505	.195 060 545	.555	.034 361 435
.406	.641 158 048	.456	.389 942 625	.506	.191 506 693	.556	.031 472 079
.407	.635 489 411	.457	.385 514 967	.507	.187 967 089	.557	.028 591 138
.408	.629 850 193	.458	.381 108 027	.508	.184 444 433	.558	.025 721 550
.409	.624 240 177	.459	.376 721 066	.509	.180 935 903	.559	.022 863 253
.410	.618 659 147	.460	.372 355 751	.510	.177 442 311	.560	.020 016 185
.411	.613 106 890	.461	.368 010 146	.511	.173 963 568	.561	.017 180 286
.412	.607 583 194	.462	.363 684 718	.512	.170 499 586	.562	.014 355 491
.413	.602 087 852	.463	.359 379 336	.513	.167 050 276	.563	.011 544 719
.414	.596 620 655	.464	.355 093 867	.514	.163 615 553	.564	.008 738 991
.415	.591 181 399	.465	.350 828 183	.515	.160 195 329	.565	.005 947 162
.416	.585 769 884	.466	.346 582 155	.516	.156 789 521	.566	.003 166 203
.417	.580 385 899	.467	.342 355 651	.517	.153 398 042	.567	.000 396 051
.418	.575 029 255	.468	.338 148 555	.518	.150 020 809	.568	0.007 636 657
.419	.569 699 750	.469	.333 960 732	.519	.146 657 738	.569	.994 887 956
.420	.564 397 190	.470	.329 792 060	.520	.143 308 746	.570	.002 149 892
.421	.559 121 381	.471	.325 642 417	.521	.139 973 752	.571	.009 422 410
.422	.553 872 131	.472	.321 511 080	.522	.136 652 673	.572	.006 705 451
.423	.548 649 251	.473	.317 399 728	.523	.133 345 428	.573	.003 998 961
.424	.543 452 552	.474	.313 306 440	.524	.130 051 938	.574	.001 302 883
.425	.538 281 817	.475	.309 231 698	.525	.126 772 123	.575	.978 617 163
.426	.533 136 953	.476	.305 175 383	.526	.123 505 902	.576	.975 941 715
.427	.528 017 687	.477	.301 137 378	.527	.120 253 199	.577	.973 276 575
.428	.522 923 806	.478	.297 117 567	.528	.117 013 935	.578	.970 621 598
.429	.517 855 313	.479	.293 115 854	.529	.113 788 632	.579	.967 976 762
.430	.512 811 818	.480	.289 132 066	.530	.110 575 414	.580	.965 342 011
.431	.507 793 296	.481	.285 166 149	.531	.107 376 005	.581	.962 717 294
.432	.502 799 483	.482	.281 217 970	.532	.104 189 739	.582	.960 102 558
.433	.497 830 235	.483	.277 287 419	.533	.101 016 512	.583	.957 497 750
.434	.492 885 381	.484	.273 374 384	.534	.097 856 278	.584	.954 902 819
.435	.487 964 752	.485	.269 478 756	.535	.094 708 954	.585	.952 317 712
.436	.483 068 179	.486	.265 600 427	.536	.091 574 466	.586	.949 742 380
.437	.478 195 495	.487	.261 739 287	.537	.088 452 711	.587	.947 176 769
.438	.473 346 536	.488	.257 895 232	.538	.085 343 708	.588	.944 620 834
.439	.468 521 138	.489	.254 068 153	.539	.082 247 295	.589	.942 074 515
.440	.463 719 139	.490	.250 257 947	.540	.079 163 490	.590	.939 537 771
.441	.458 940 378	.491	.246 464 509	.541	.076 092 043	.591	.937 010 549
.442	.454 181 690	.492	.242 687 735	.542	.073 033 064	.592	.934 492 801
.443	.449 451 935	.493	.238 927 523	.543	.069 986 422	.593	.931 984 477
.444	.444 741 939	.494	.235 183 771	.544	.066 952 050	.594	.929 485 529
.445	.440 054 553	.495	.231 456 378	.545	.063 929 878	.595	.926 995 909
.446	.435 389 623	.496	.227 745 244	.546	.060 919 838	.596	.924 515 569
.447	.430 746 998	.497	.224 050 299	.547	.057 921 862	.597	.922 044 461
.448	.426 126 527	.498	.220 371 355	.548	.054 935 884	.598	.919 582 538
.449	.421 528 059	.499	.216 708 401	.549	.051 961 837	.599	.917 129 753
.450	.416 951 118	.500	.213 061 319	.550	.048 999 655	.600	.914 686 060



TABLE III.

$x$	$\frac{e^{-x}}{x}$	$x$	$\frac{e^{-x}}{x}$	$x$	$\frac{e^{-x}}{x}$	$x$	$\frac{e^{-x}}{x}$
.600	0.914 686 060	.650	0.803 147 349	.700	0.709 407 577	.750	0.629 822 070
.601	.912 251 412	.651	.801 112 123	.701	.707 687 542	.751	.628 354 757
.602	.909 825 764	.652	.799 083 940	.702	.705 973 114	.752	.626 891 973
.603	.907 400 060	.653	.797 062 706	.703	.704 264 268	.753	.625 433 701
.604	.905 001 282	.654	.795 048 570	.704	.702 560 980	.754	.623 979 921
.605	.902 602 358	.655	.793 041 317	.705	.700 863 226	.755	.622 530 616
.606	.900 212 253	.656	.791 040 976	.706	.699 170 981	.756	.621 085 706
.607	.897 830 921	.657	.789 047 514	.707	.697 484 222	.757	.619 645 354
.608	.895 458 319	.658	.787 060 890	.708	.695 802 923	.758	.618 209 361
.609	.893 094 403	.659	.785 081 009	.709	.694 127 063	.759	.616 777 770
.610	.890 739 130	.660	.783 108 083	.710	.692 456 616	.760	.615 350 502
.611	.888 392 455	.661	.781 141 818	.711	.690 791 560	.761	.613 927 719
.612	.886 054 335	.662	.779 182 273	.712	.689 131 870	.762	.612 500 224
.613	.883 724 729	.663	.777 229 418	.713	.687 477 525	.763	.611 095 059
.614	.881 403 504	.664	.775 283 221	.714	.685 828 409	.764	.609 685 206
.615	.879 090 887	.665	.773 343 651	.715	.684 184 772	.765	.608 279 648
.616	.876 786 566	.666	.771 410 678	.716	.682 546 319	.766	.606 878 308
.617	.874 490 590	.667	.769 484 271	.717	.680 913 118	.767	.605 481 347
.618	.872 202 918	.668	.767 564 400	.718	.679 285 146	.768	.604 088 569
.619	.869 923 507	.669	.765 651 035	.719	.677 662 381	.769	.602 700 017
.620	.867 652 310	.670	.763 744 146	.720	.676 044 800	.770	.601 315 673
.621	.865 389 311	.671	.761 843 703	.721	.674 432 381	.771	.599 935 521
.622	.863 134 444	.672	.759 949 078	.722	.672 825 103	.772	.598 559 544
.623	.860 887 677	.673	.758 062 039	.723	.671 222 942	.773	.597 187 724
.624	.858 648 971	.674	.756 180 739	.724	.669 625 878	.774	.595 820 045
.625	.856 418 286	.675	.754 305 808	.725	.668 033 888	.775	.594 456 492
.626	.854 195 582	.676	.752 437 158	.726	.666 446 951	.776	.593 097 046
.627	.851 980 822	.677	.750 574 779	.727	.664 865 045	.777	.591 741 691
.628	.849 773 906	.678	.748 718 643	.728	.663 288 149	.778	.590 390 412
.629	.847 574 975	.679	.746 868 723	.729	.661 716 242	.779	.589 043 192
.630	.845 383 811	.680	.745 024 989	.730	.660 149 301	.780	.587 700 014
.631	.843 200 436	.681	.743 187 414	.731	.658 587 308	.781	.586 360 804
.632	.841 024 813	.682	.741 355 969	.732	.657 030 239	.782	.585 025 723
.633	.838 856 903	.683	.739 530 628	.733	.655 478 076	.783	.583 694 577
.634	.836 696 670	.684	.737 711 362	.734	.653 930 796	.784	.582 367 410
.635	.834 544 076	.685	.735 898 145	.735	.652 388 380	.785	.581 044 206
.636	.832 399 084	.686	.734 090 949	.736	.650 850 806	.786	.579 724 949
.637	.830 261 659	.687	.732 289 748	.737	.649 318 055	.787	.578 409 624
.638	.828 131 702	.688	.730 494 513	.738	.647 790 100	.788	.577 098 215
.639	.826 009 350	.689	.728 705 219	.739	.646 266 039	.789	.575 790 706
.640	.823 894 413	.690	.726 921 839	.740	.644 748 534	.790	.574 487 083
.641	.821 786 888	.691	.725 144 347	.741	.643 234 872	.791	.573 187 329
.642	.819 686 749	.692	.723 372 716	.742	.641 725 932	.792	.571 891 490
.643	.817 593 961	.693	.721 606 920	.743	.640 221 694	.793	.570 599 371
.644	.815 508 489	.694	.719 846 934	.744	.638 722 139	.794	.569 311 136
.645	.813 430 298	.695	.718 092 731	.745	.637 227 248	.795	.568 026 711
.646	.811 359 353	.696	.716 344 286	.746	.635 737 001	.796	.566 746 090
.647	.809 295 619	.697	.714 601 573	.747	.634 251 379	.797	.565 469 228
.648	.807 239 063	.698	.712 864 508	.748	.632 770 303	.798	.564 196 142
.649	.805 189 651	.699	.711 133 244	.749	.631 293 933	.799	.562 926 806
.650	.803 147 349	.700	.709 407 577	.750	.629 822 070	.800	.561 661 205

TABLE III.

$x$	$\frac{e^{-x}}{x}$	$x$	$\frac{e^{-x}}{x}$	$x$	$\frac{e^{-x}}{x}$	$x$	$\frac{e^{-x}}{x}$
.800	0.561 661 205	.850	0.502 841 096	.900	0.451 744 066	.950	0.407 095 814
.801	.560 399 326	.851	.501 748 215	.901	.450 791 668	.951	.406 261 278
.802	.559 141 152	.852	.500 658 399	.902	.449 841 833	.952	.405 428 902
.803	.557 886 671	.853	.499 571 640	.903	.448 894 550	.953	.404 598 677
.804	.556 635 808	.854	.498 487 924	.904	.447 949 811	.954	.403 770 597
.805	.555 388 729	.855	.497 407 241	.905	.447 007 608	.955	.402 944 651
.806	.554 145 238	.856	.496 329 580	.906	.446 067 931	.956	.402 120 842
.807	.552 905 383	.857	.495 254 930	.907	.445 130 772	.957	.401 299 153
.808	.551 669 149	.858	.494 183 279	.908	.444 196 121	.958	.400 479 580
.809	.550 436 523	.859	.493 114 617	.909	.443 263 971	.959	.399 662 117
.810	.549 207 489	.860	.492 048 933	.910	.442 334 314	.960	.398 846 756
.811	.547 982 035	.861	.490 988 216	.911	.441 407 136	.961	.398 033 491
.812	.546 760 147	.862	.489 926 455	.912	.440 482 434	.962	.397 222 313
.813	.545 541 810	.863	.488 869 639	.913	.439 560 198	.963	.396 413 218
.814	.544 327 012	.864	.487 815 758	.914	.438 640 419	.964	.395 606 197
.815	.543 115 739	.865	.486 764 801	.915	.437 723 089	.965	.394 801 243
.816	.541 907 977	.866	.485 716 757	.916	.436 808 198	.966	.394 008 351
.817	.540 703 713	.867	.484 671 616	.917	.435 895 740	.967	.393 197 513
.818	.539 502 933	.868	.483 629 367	.918	.434 985 705	.968	.392 398 722
.819	.538 305 624	.869	.482 590 000	.919	.434 078 084	.969	.391 601 972
.820	.537 111 774	.870	.481 553 505	.920	.433 172 871	.970	.390 807 256
.821	.535 921 368	.871	.480 519 870	.921	.432 270 056	.971	.390 014 567
.822	.534 734 394	.872	.479 489 087	.922	.431 369 631	.972	.389 223 899
.823	.533 550 838	.873	.478 461 143	.923	.430 471 588	.973	.388 435 245
.824	.532 370 688	.874	.477 436 030	.924	.429 575 919	.974	.387 648 598
.825	.531 193 930	.875	.476 413 737	.925	.428 682 615	.975	.386 863 952
.826	.530 020 553	.876	.475 394 253	.926	.427 791 669	.976	.386 081 301
.827	.528 850 542	.877	.474 377 570	.927	.426 903 073	.977	.385 300 637
.828	.527 683 886	.878	.473 363 676	.928	.426 016 818	.978	.384 521 955
.829	.526 520 571	.879	.472 352 592	.929	.425 132 897	.979	.383 745 248
.830	.525 360 586	.880	.471 344 218	.930	.424 251 301	.980	.382 970 509
.831	.524 203 917	.881	.470 338 633	.931	.423 372 023	.981	.382 197 732
.832	.523 050 552	.882	.469 335 799	.932	.422 495 055	.982	.381 426 911
.833	.521 900 479	.883	.468 335 705	.933	.421 620 389	.983	.380 658 039
.834	.520 753 685	.884	.467 338 341	.934	.420 748 017	.984	.379 891 111
.835	.519 610 157	.885	.466 343 699	.935	.419 877 931	.985	.379 126 119
.836	.518 469 885	.886	.465 351 767	.936	.419 010 121	.986	.378 363 057
.837	.517 332 855	.887	.464 362 536	.937	.418 144 587	.987	.377 601 920
.838	.516 199 055	.888	.463 375 998	.938	.417 281 314	.988	.376 842 700
.839	.515 068 474	.889	.462 392 142	.939	.416 420 297	.989	.376 085 393
.840	.513 941 009	.890	.461 410 958	.940	.415 561 527	.990	.375 329 991
.841	.512 816 919	.891	.460 432 438	.941	.414 704 998	.991	.374 576 488
.842	.511 695 921	.892	.459 456 572	.942	.413 850 701	.992	.373 824 879
.843	.510 578 003	.893	.458 483 350	.943	.412 998 630	.993	.373 075 157
.844	.509 463 425	.894	.457 512 764	.944	.412 148 776	.994	.372 327 317
.845	.508 351 903	.895	.456 544 803	.945	.411 301 133	.995	.371 581 351
.846	.507 243 517	.896	.455 579 459	.946	.410 455 693	.996	.370 837 255
.847	.506 138 255	.897	.454 616 723	.947	.409 612 448	.997	.370 095 022
.848	.505 036 105	.898	.453 656 584	.948	.408 771 392	.998	.369 354 646
.849	.503 937 056	.899	.452 699 035	.949	.407 932 516	.999	.368 616 121
.850	.502 841 096	.900	.451 744 066	.950	.407 095 814	1.000	.367 879 411

TABLE IV.

$x$	$\frac{e^{-x}}{x}$	$x$	$\frac{e^{-x}}{x}$
1.00	0.367 879 441	1.50	0.148 753 440
1.01	.360 612 851	1.51	.146 297 909
1.02	.353 524 451	1.52	.143 889 399
1.03	.346 608 700	1.53	.141 526 590
1.04	.339 860 271	1.54	.139 208 507
1.05	.333 274 047	1.55	.136 634 177
1.06	.326 845 104	1.56	.134 702 610
1.07	.320 568 708	1.57	.132 512 855
1.08	.314 440 302	1.58	.130 363 986
1.09	.308 455 499	1.59	.128 255 102
1.10	.302 610 076	1.60	.126 185 324
1.11	.296 809 965	1.61	.124 153 798
1.12	.291 321 245	1.62	.122 159 691
1.13	.285 870 138	1.63	.120 202 193
1.14	.280 543 002	1.64	.118 280 514
1.15	.275 336 321	1.65	.116 393 884
1.16	.270 246 708	1.66	.114 541 554
1.17	.265 270 890	1.67	.112 722 794
1.18	.260 405 711	1.68	.110 936 890
1.19	.255 648 121	1.69	.109 183 150
1.20	.250 995 177	1.70	.107 460 897
1.21	.246 444 033	1.71	.105 769 469
1.22	.241 991 940	1.72	.104 108 225
1.23	.237 636 242	1.73	.102 476 538
1.24	.233 374 369	1.74	.100 873 793
1.25	.229 203 837	1.75	.099 299 396
1.26	.225 122 243	1.76	.097 752 764
1.27	.221 127 261	1.77	.096 233 327
1.28	.217 216 641	1.78	.094 740 532
1.29	.213 388 204	1.79	.093 273 838
1.30	.209 639 841	1.80	.091 832 716
1.31	.205 969 509	1.81	.090 416 650
1.32	.202 375 229	1.82	.089 025 138
1.33	.198 855 084	1.83	.087 657 687
1.34	.195 407 215	1.84	.086 313 819
1.35	.192 029 823	1.85	.084 993 063
1.36	.188 721 160	1.86	.083 694 963
1.37	.185 479 533	1.87	.082 419 070
1.38	.182 303 209	1.88	.081 164 950
1.39	.179 190 867	1.89	.079 932 174
1.40	.176 140 689	1.90	.078 720 326
1.41	.173 151 265	1.91	.077 528 998
1.42	.170 221 139	1.92	.076 357 793
1.43	.167 348 897	1.93	.075 206 320
1.44	.164 533 166	1.94	.074 074 201
1.45	.161 772 612	1.95	.072 961 062
1.46	.159 065 042	1.96	.071 866 541
1.47	.156 411 895	1.97	.070 790 282
1.48	.153 809 249	1.98	.069 731 938
1.49	.151 256 816	1.99	.068 689 169
1.50	.148 753 440	2.00	.067 667 642

1

