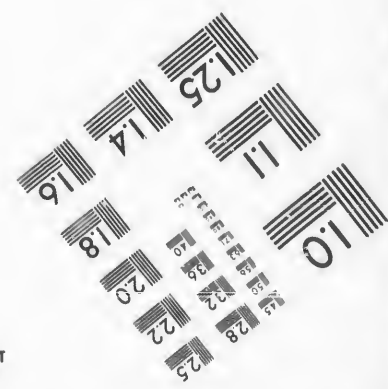
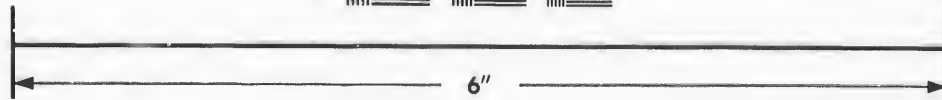
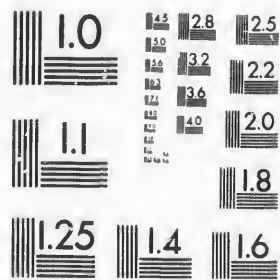


**IMAGE EVALUATION
TEST TARGET (MT-3)**



**Photographic
Sciences
Corporation**

23 WEST MAIN STREET
WEBSTER, N.Y. 14580
(716) 372-4503

**CIHM/ICMH
Microfiche
Series.**

**CIHM/ICMH
Collection de
microfiches.**



Canadian Institute for Historical Microreproductions / Institut canadien de microreproductions historiques

© 1987

Technical and Bibliographic Notes/Notes techniques et bibliographiques

The Institute has attempted to obtain the best original copy available for filming. Features of this copy which may be bibliographically unique, which may alter any of the images in the reproduction, or which may significantly change the usual method of filming, are checked below.

L'Institut a microfilmé le meilleur exemplaire qu'il lui a été possible de se procurer. Les détails de cet exemplaire qui sont peut-être uniques du point de vue bibliographique, qui peuvent modifier une image reproduite, ou qui peuvent exiger une modification dans la méthode normale de filmage sont indiqués ci-dessous.

- Coloured covers/
Couverture de couleur
- Covers damaged/
Couverture endommagée
- Covers restored and/or laminated/
Couverture restaurée et/ou pelliculée
- Cover title missing/
Le titre de couverture manque
- Coloured maps/
Cartes géographiques en couleur
- Coloured ink (i.e. other than blue or black)/
Encre de couleur (i.e. autre que bleue ou noire)
- Coloured plates and/or illustrations/
Planches et/ou illustrations en couleur
- Bound with other material/
Relié avec d'autres documents
- Tight binding may cause shadows or distortion along interior margin/
La reliure serrée peut causer de l'ombre ou de la distorsion le long de la marge intérieure
- Blank leaves added during restoration may appear within the text. Whenever possible, these have been omitted from filming/
Il se peut que certaines pages blanches ajoutées lors d'une restauration apparaissent dans le texte, mais, lorsque cela était possible, ces pages n'ont pas été filmées.
- Additional comments:/
Commentaires supplémentaires:

- Coloured pages/
Pages de couleur
- Pages damaged/
Pages endommagées
- Pages restored and/or laminated/
Pages restaurées et/ou pelliculées
- Pages discoloured, stained or foxed/
Pages décolorées, tachetées ou piquées
- Pages detached/
Pages détachées
- Showthrough/
Transparence
- Quality of print varies/
Qualité inégale de l'impression
- Includes supplementary material/
Comprend du matériel supplémentaire
- Only edition available/
Seule édition disponible
- Pages wholly or partially obscured by errata slips, tissues, etc., have been refilmed to ensure the best possible image/
Les pages totalement ou partiellement obscurcies par un feuillet d'errata, une pelure, etc., ont été filmées à nouveau de façon à obtenir la meilleure image possible.

This item is filmed at the reduction ratio checked below/
Ce document est filmé au taux de réduction indiqué ci-dessous.

10X	12X	14X	16X	18X	20X	22X	24X	26X	28X	30X	32X
						✓					

The copy filmed here has been reproduced thanks to the generosity of:

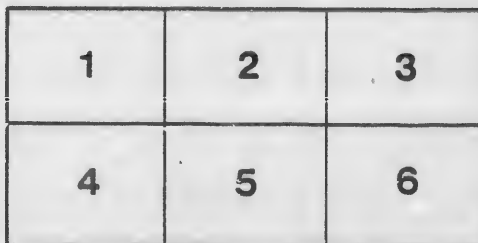
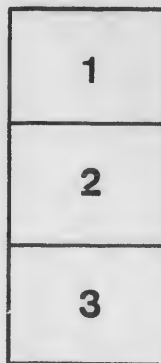
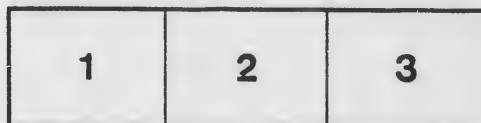
D. B. Weldon Library
University of Western Ontario
(Regional History Room)

The images appearing here are the best quality possible considering the condition and legibility of the original copy and in keeping with the filming contract specifications.

Original copies in printed paper covers are filmed beginning with the front cover and ending on the last page with a printed or illustrated impression, or the back cover when appropriate. All other original copies are filmed beginning on the first page with a printed or illustrated impression, and ending on the last page with a printed or illustrated impression.

The last recorded frame on each microfiche shall contain the symbol \rightarrow (meaning "CONTINUED"), or the symbol ∇ (meaning "END"), whichever applies.

Maps, plates, charts, etc., may be filmed at different reduction ratios. Those too large to be entirely included in one exposure are filmed beginning in the upper left hand corner, left to right and top to bottom, as many frames as required. The following diagrams illustrate the method:



L'exemplaire filmé fut reproduit grâce à la générosité de:

D. B. Weldon Library
University of Western Ontario
(Regional History Room)

Les images suivantes ont été reproduites avec le plus grand soin, compte tenu de la condition et de la netteté de l'exemplaire filmé, et en conformité avec les conditions du contrat de filmage.

Les exemplaires originaux dont la couverture en papier est imprimée sont filmés en commençant par le premier plat et en terminant soit par la dernière page qui comporte une empreinte d'impression ou d'illustration, soit par le second plat, selon le cas. Tous les autres exemplaires originaux sont filmés en commençant par la première page qui comporte une empreinte d'impression ou d'illustration et en terminant par la dernière page qui comporte une telle empreinte.

Un des symboles suivants apparaîtra sur la dernière image de chaque microfiche, selon le cas: le symbole \rightarrow signifie "A SUIVRE", le symbole ∇ signifie "FIN".

Les cartes, planches, tableaux, etc., peuvent être filmés à des taux de réduction différents. Lorsque le document est trop grand pour être reproduit en un seul cliché, il est filmé à partir de l'angle supérieur gauche, de gauche à droite, et de haut en bas, en prenant le nombre d'images nécessaire. Les diagrammes suivants illustrent la méthode.

No 10.
Clark & Peace

VOTERS' LIST

—OF THE—

W

MUNICIPALITY OF

LONDON WEST,

— FOR —

THE YEAR 1889.

*Rect. & filed
In Office Clerk Peace*

LONDON, ONTARIO

THOMAS COFFEY, BOOK AND JOB PRINTER.

1889.

*October 19/89
Hutchinson
Clerk Peace
per [Signature]*

10/1/89

M

Con

Per

D

...

...

...

VOTERS' LIST

—OF THE—

MUNICIPALITY OF LONDON WEST

FOR 1889.

POLLING SUB-DIVISION No. 1.

Comprising the Whole of the Village North of Blackfriars and Paul Streets.

PART FIRST.

Persons Entitled to Vote at both Municipal Elections and Elections to the Legislative Assembly.

No.	Name.	Situation.	Ass't.
5	Armstrong C. B., o.....	pt 2 n Blackfriars...	1350
194	Armstrong Thomas, t.....	pt 47 n Anr...	300
16	Barham Thomas, o.....	10 n Blackfriars...	600
32	Bartlett George, o.....	23 s Ann...	475
47	Burnett James, t.....	39 s Ann...	450
56	Bowman George, t.....	43, 44 n Anr...	215
57	Bowman John, o.....	44, 45 n Ann...	400
112	Bailey Thomas, o.....	6 n Oxford...	400
150	Borland David, o.....	24 n Saunb...	475
165	Bailey William, t.....	7 e Irvine...	350
166	Becher H. C., o.....	Island...	500
200	Broadway Nehemiah, o.....	pt 17 w Wharnciff...	1800
109	Bending A., o.....	85 w William...	400
183	Bouge Arthur, t.....	2 e Wharnciff...	775

LONDON WEST VOTERS' LIST.

j	15	Cox Michael, t9 n Blackfriars...	675
	39	Campbell James, opt 28, 29 s Ann...	500
j	43	Cooper George B., t33, 34 s Ann...	725
	79	Crockett Charles, t63 w John...	275
	87	Crockett John, tpt 70 w John...	375
	132	Cowan Robert K., opt 17 s Oxford...	675
	144	Cushing John, t6 w Gunn...	400
	147	Clark Henry, opt 20 n Saunby...	210
	177	Charlesworth George, opt 6 e Wharncliff...	400
j	175	Cushing Wm., jr., tpt 16 e Wharncliff...	1100
	175	Cushing Wm., sr., opt 16 e Wharncliff...	1100
	196	Cushman Robert, tpt 1 w Wharncliff...	275
	12	Dwyer John, tpt 7 n Blackfriars...	450
	17	Dell W. H., opt 11 n Blackfriars...	750
	151	Davidson Thomas, o3 n Saunby...	575
	197	Dicker Thomas, tpt 1 w Wharncliff...	275
j	172	Essery Matthew, tpt 2 n Mill...	800
j	9	Fish Henry, opt 6 n Blackfriars...	400
	33	Fawkes George, o26 s Ann...	350
	60	Flynn Charles, tpt 46 n Ann...	215
j	77	Fowler Wm. R., o61 w John...	400
	124	Fernley George, o3 of pt 1 n Oxford...	400
	181	Finnegan George, tpt 1, 2 e Wharncliff...	700
	202	Fowler Thomas, tpt 17 w Wharncliff...	900
	11	Graham Thomas, tpt 7 n Blackfriars...	500
	70	Gibson Samuel, o57, 58, 59 n Queen...	800
	93	Greenway Wm. S., o74 e William...	525
	93	Greenway C., o74 e William...	525

LONDON WEST VOTERS' LIST.

675		91	Greenway Wm. H., o.....	73 s William...	700
500		129	Gower Charles B., t.....	pt 2 n Oxford...	2000
725		152	Grant Peter, o.....	1, 2 n Saunby...	600
275		158	Gillespie Robert, o.....	6, 7 s Saunby...	600
375		172	Gamage James, o.....	pt 2 n Mill...	800
675	j	192	Graham Christopher, o.....	pt 1 w Wharnclyff...	400
400		210	Glass Wm., o.....	7, 8, 9 n Caroline...	400
210		211	Glass Samuel, o.....	pt 17 w Wharnclyff...	700
400		212	Glass Charles, o.....	pt 17 w Wharnclyff...	700
1100		30	Gatecliff Thomas, t.....	21, 22 s Ann...	400
1100		170	Grant Wm., t.....	pt 1 n Mill...	700
275					

	j	8	Hickson Elliott, t.....	pt 6 n Blackfriars...	400
		17	Hooper John, t.....	pt 10 n Blackfriars...	450
450	j	29	Hutchinson Philip, t.....	pt 21 s Ann...	400
750		36	Henley Wm., t.....	pt 28 s Ann...	300
575		37	Hamilton Charles, t.....	pt 28 s Ann...	475
275		40	Houghton Edward, o.....	30 s Ann...	700
		45	Hevey James, t.....	37 s Ann...	650
		85	Hardy Edward, o.....	68 w John...	425
		94	Henwood John, t.....	75 e William...	475
		94	Henwood W. H., o.....	75 e William...	475
		99	Hayes Jeremiah, o.....	81 e William...	380
		125	Hobbs John, o.....	4 of pt 1 n Oxford...	450
		126	Harris Thomas, t.....	5 of pt 1 n Oxford...	400
800		143	Hammond Levi, o.....	5 w Gunn...	350
		161	Hoolihan James, o.....	10, 11, 12, pt 13 s Saunby...	450
		178	Hoolihan Thomas, t.....	pt 6 e Wharnclyff...	575
		209	Hutchinson Francis, o.....	pt 17 w Wharnclyff...	625
		213	Hull Henry, o.....	10, 11 s Caroline...	400
		20	Henstridge Charles, t.....	pt 13 n Blackfriars...	280
		36	Heal C. W., o.....	pt 28 s Ann...	300

Howie William, J. pt 2 n Blackfriars &c

400					
350					
215					
400					
400					
700					
900					
	j	173	Innes Edward, t.....	2 s Grosvenor...	700
		7	Jones Alfred, t.....	4, 5 n Blackfriars...	1000
		41	Jolly George C., o.....	31 s Ann...	700
	j	127	Jerry Joseph, t.....	pt 1 n Oxford...	1500
		80	Johnson Alex., o.....	pt 64 w John...	275

500					
800					
525					
525	j	13	Kearney John, t.....	pt 5 n Blackfriars...	450

LONDON WEST VOTERS' LIST.

	64	Kenny Andrew, o.....	48 n Ann...	325
	128	Kennedy Robert, t.....	pt 2 n Oxford...	225
	25	Leigh John, o.....	pt 19 n Blackfriars...	450
	63	Lancaster John, t.....	pt 48 n Ann...	375
	132	Lethbridge John W., t	pt 17 s Oxford...	675
j	180	Lawrence Wm., o.....	pt 4 e Wharncliff...	550
	171	Ludwig Louis V., o.....	pt 1 n Mill...	950
	163	Long George, t	15, 16 s Saunby...	475
	205	Lord John, o.....	2 w Wharncliff...	350
	1	Murray R. S., o.....	pt 1 n Blackfriars...	1000
	24	Marsh Wm., o.....	pt 19 n Blackfriars...	425
	46	Marshall James, t.....	38 s Ann...	725
	111	Moore Wm., o.....	1, 2, 3 n Oxford...	975
	190	Macdonald A. J. B., o	pt 1 w Wharncliff...	1850
	180	Macdonald D. C., o	pt 1 w Wharncliff...	2700
j	25	McPherson James, t.....	pt 19 n Blackfriars...	450
	29	McDonald Jerry, o.....	pt 21 s Ann...	400
	70	McRoberts Wm., o.....	52 s Queen...	425
	133	McCarthy Patrick, o.....	pt 17 s Oxford...	800
	146	McIntyre Peter, t.....	7 e Gunn...	350
	193	McLane Allan, t.....	pt 1 w Wharncliff...	400
	194	McLane Lachlan, t.....	pt 1 w Wharncliff...	400
	203	McArthur Malcolm, o.....	4, 5, 6 w Wharncliff...	450
	120	Nixon Joseph, o.....	3 n Oxford...	3200
	208	Nicholls Charles, o.....	pt 17 w Wharncliff...	675

LONDON WEST VOTERS' LIST.

325
225

207 O'Mara Martin, t..... pt 17 w Wharnclyff... 1800

450
375
675
550
950
475
350

22 Pryce Wm., t..... 14 n Blackfriars... 500
 23 Petch David, t..... pt 21 s Ann... 350
 31 Pepper Frederick, t..... pt 22 s Ann... 400
 44 Payne Wm., t..... 35, 36 s Ann... 750
 45 Pincombe Wm., o..... 37 s Ann... 650
 76 Peters John, o..... 62 w John... 300
 89 Pittfield John A., t..... 71 w John... 575
 156 Pook Frederick, o..... 4 s Saunby... 450
 167 Pearin John, t..... pt 16 n Mill... 250
 201 Palmer James, o..... pt 17 w Wharnclyff... 1800
 206 Paul Charles, o..... pt 17 w Wharnclyff... 425
 213 Price John, t..... 10, 11 s Caroline... 400
 59 Potter Charles, t..... pt 46 n Ann... 215
 130 Power Thomas A., t..... pt 3 n Oxford... 3200
 155 Platt John, o..... 3 s Saunby... 450

1000
425
725
975
1850
2700

j 10 Ralph Thomas, t..... pt 7 n Blackfriars... 500
 15 Rogers James, o..... 9 n Blackfriars... 675
 j 69 Rupie Louis, o..... 53, 54, 55 s Queen... 650
 127 Rudd Charles W., o..... pt 1 n Oxford... 1500

450
400
425
800
350
400
400
450

8 Simpson John, o..... pt 6 n Blackfriars... 400
 22 Sims Wm., o..... 14 n Blackfriars... 500
 51 Stratford Elizeus, o..... pt 40 s Ann... 100
 j 61 Smith Wm., o..... 47 n Ann... 500
 66 Sti'son Richard, t..... 51 n Ann... 425
 j 98 Scollick John, o..... 80 e William... 500
 j 155 Stevens John, t..... 3 s Saunby... 450
 j 159 Southwell W. H., t..... 8 s Saunby... 450
 j 160 Stevens Thomas, o..... 9 s Saunby... 450
 j 164 Stinchcombe Wm., o..... 5, 6 w Irvine... 700
 161 Saunby Wm., o..... pt 16 e Wharnclyff... 850
 170 Staunton Albert, o..... pt 1 n Mill... 700
 176 Saunby Joseph D., o..... pt 16 n Mill... 8500
 65 Smithson Thomas, t..... 49 n Ann... 350
 92 Smith Charles, t..... 73 e William... 900
 j 98 Smith Isaac D., t..... 80 e William... 500
 204 Sherlock F., o..... 3 w Wharnclyff... 550

3200
675

4 Tynan Patrick, t..... pt 2 n Blackfriars... 300

LONDON WEST VOTERS' LIST.

j	5	Thompson Alex, t.....	pt 2 n Blackfriars...	1350	
j	96	Tuttle Daniel, o.....	78 e William...	500	178
	153	Tyler Wm., o.....	4 n Saunby...	225	
j	157	Taffeld Samuel, o.....	5 s Saunby...	450	
	162	Thomas Wm., o.....	14 s Saunby...	460	
	193	Tytler Wm., o.....	pt 1 w Wharncliff...	400	202
	82	Taylor James, o.....	65 w John...	300	
	88	Thompson Isaac, t.....	pt 70 w John...	375	
					87
					42
j	110	Va lentine Thomas W., t.....	10, 11 n Oxford...	700	140
					148
					208
j	18	Wright Gibson, o.....	12 n Blackfriars...	850	
	78	Wilson Wm., t.....	32 w John...	300	
	87	Wattam John, o.....	71 w John...	575	179
	88	Wattam Wm. J., t.....	72 w John...	800	
	88	Wattam Joseph R., o.....	72 w John...	800	
	97	Wonnacott Robert, o.....	79 e William, and other Property...		
j	113	Woodward Robert, o.....	5 n Oxford...	425	144
j	114	Ware Henry, o.....	1 n Oxford...	450	
j	161	Waldock Charles, t.....	pt 16 e Wharncliff...	750	
					33
					58
					95
					154
					138
	150	Young Josiah, t.....	24 n Saunby...	475	

PART SECOND.

Persons Entitled to Vote at Municipal Elections only.

No.	Name.	Situation.	Per
			No
38	Chivers Emma, t.....	pt 28 and 29 s Ann	81
3	Evans Mandamus, t.....	pt 2 r Blackfriars	100
184	Fonger Mary, o.....	pt 1 w Wharncliff	
129	Gower Ellen, o.....	2 r Oxford	

LONDON WEST VOTERS' LIST.

178 Hoolihan Margaret, o..... pt 6 e Wharnclyff

202 Jacobs Eliza, o pt 17 w Wharnclyff

87 Lindsay C., o..... 70 w John

42 McCausland Francis, o.....32 s Ann

140 McIntyre Catharine, o.....7 e Gunn

148 McPherson Jessie, o.....21 n Saunby

208 Nicholls Elizabeth, o..... pt 17 w Wharnclyff

170 Purdie J., o.....pt 4 e Wharnclyff

144 Quinn B., o..... 6 w Gunn

33 Saunby Mary A., t.....25 s Ann

58 Sisley Eliza, t..... 45 s Ann

95 Stinchcombe Ellen, t.....77 e William

154 Smith Susan, t..... 4 n Saunby

138 Wilkinson Rhoda, o.....7 e Grace

PART THIRD.

Persons Entitled to Vote at Elections to the Legislative Assembly only.

No. Name. Situation.

81 Bullied Whitney, t.....pt 64 w John

100 Moore John, o..... 82 e Wil .m

LONDON WEST VOTERS' LIST.

POLLING SUB-DIVISION No. 2.

Comprising that Part of the Village Lying South of Blackfriars Street and East of the Wharnclyff Highway.

PART FIRST.

Persons Entitled to Vote at both Municipal Elections and Elections to the Legislative Assembly.

No.	Name.	Situation.	Ass't.
j 208	Arscott Richard, t.....	pt 13 s Blackfriars...	450
j 378	Axtell Henry, t.....	pt B s Dundas...	425
393	Allenby John B, o.....	pt 3 n Dundas...	250
j 344	Anderson Albert, t.....	6 e Centre...	675
344	Anderson Peter, o.....	6 e Centre...	675
359	Abram Robert, o.....	A, D s Kensington...	345
326	Albertson Hiram, o.....	3 n Kensington...	525
j 327	Axtell George, t.....	2 n Kensington...	450
330	Andrews David, t.....	10, 11 s Alexander...	550
367	Adams Wm. R., t.....	6 e Wharnclyff...	450
j 405	Andrews Joseph, o.....	n Beech...	975
306	Alexander John, t.....	pt 3, 4 w Centre...	225
j 235	Botton Wm., o.....	2 s Blackfriars...	525
245	Bowie Robert G., o.....	32, 33 w Albion...	200
254	Black John G., t.....	pt 6 w Albion...	375
270	Butler Alfred, o.....	14 s Peter...	330
j 313	Brown Wm. T., t.....	pt 2, 3 w Centre...	425
j 293	Beckwith Joseph, t.....	pt 8 w Centre...	475
384	Brazier John, t.....	pt 4 s Dundas...	350
j 388	Barrett Patrick, o.....	pt 6 s Dundas...	700
j 399	Beaton John, t.....	pt G n Dundas...	450
j 329	Brodie John, o.....	13, 14, 15 n Kensington...	800
j 331	Bending Abram, t.....	10, 11 s Alexander...	550
358	Butler Wm., t.....	22 e Wharnclyff...	375
264	Barton Wm., t.....	15 n Peter...	250
j 288	Bush John, t.....	11 w Centre...	425
317	Brown Frederick, t.....	pt 4 w Centre...	300
340	Bailey John, t.....	pt 5 e Centre...	375
	<i>Burgess John . J. pt 3 w Centre</i>		
j 217	Campbell Duncan, o.....	14, 15, 16, 17 s Blackfriars...	1200
239	Coffey Thomas, o.....	5, 6 w Napier...	750

LONDON WEST VOTERS' LIST.

262	Cooney Patrick, o.....	5, 6, 7, 8 e Albion...	650
267	Cowse Wm., o.....	18 n Peter...	400
268	Currie Alexander, o.....	11 s Peter...	300
311	Conley V., t.....	pt 2 w Centre...	450
380	Chapman John, o.....	15, 16 s Dundas...	825
381	Culbert Thomas, o.....	17, 19, 20, 21 s Dundas...	950
397	Clughston John, t.....	pt K n Dundas...	450
350	Collins Dennis, o.....	6 e Centre...	550
364	Campbell James, o.....	1, 2, 3 e Wharnclyff...	800
374	Cook Wm., t.....	B e Wharnclyff...	270
228	Collins Stephen, o.....	pt 1 s Blackfriars...	3000
228	Collins Jeremiah, o.....	pt 1 s Blackfriars...	3000
351	Childs Arthur, t.....	5 e Centre...	450
381	Corbin Wm., t.....	pt 4 s Dundas...	375

W Clark James. J. pt 6 n. Dundas St
 W Collins James J. pt 18 n. Centre St
 W Coocorau William. O pt 1 n. Albion St
 W Chalmers William J & M. F. n. Dundas St

226	Dutton Wm, o.....	pt 1 s Blackfriars....	450
232	Delay John M., t.....	4, 6, 7 s Blackfriars....	700
236	Donaghy Wm., o.....	3 s Blackfriars....	500
251	Dark Matthew, o.....	3, 4 w Albion...	800
258	Donaghy Thomas, o.....	5, 6 e Albion....	690
274	Duff Wm., o.....	10 s Leslie....	550
296	Donaghy Andrew, o.....	8 w Centre....	700
314	Daniels James, t.....	pt 2, 3 w Centre....	425
348	Derr John, t.....	2 e Centre....	725
362	Douglas Robert, o.....	26 e Wharnclyff....	500

272	Elliott Edward, o.....	8 n Leslie....	400
342	Emigh Henry, o.....	pt 5 e Centre....	2500
332	Ellis James, o.....	12 s Alexander....	450
335	Egleton Thomas W., o.....	pt 9 n Alexander....	450

231	Flannery Jeremiah, o.....	3 s Blackfriars....	450
307	Frodensburg John, t.....	pt 3, 4 w Centre....	225
351	Fuller David, o.....	5 e Centre....	450

Blackfriars

elections

Ass't.

450
 425
 250
 675
 675
 345
 525
 450
 550
 450
 975
 225

525
 200
 375
 330
 425
 475
 350
 700
 450
 800
 550
 375
 250
 425
 300
 375

1200
 750

LONDON WEST VOTERS' LIST.

j	223	Gurd J. R., o.....	1 s Blackfriars....	2650
	261	Gibson Wm., o.....	1 e Albion....	625
	265	Gregory Alfred, t.....	16 n Peter....	500
	275	Gorman Wm., o.....	9 s Leslie....	525
	287	Gibson Charles, o.....	12 w Centre....	675
	288	Gillespie Charles, o.....	11 w Centre....	425
	294	Gatland Edward, o.....	7 w Centre....	450
j	302	Giddens Wm., o.....	1 w Centre....	575
	345	Graham John, t.....	pt 5 e Centre....	750
j	352	Garrett Wm. J., o.....	3, 4 e Centre....	750
j	323	Cash Robert, o.....	E s Kensington....	650
j	321	Graham Robert, t.....	6 s Kensington....	1250
j	347	Gahan Henry B., o.....	3 e Centre....	425

j	242	Hookway Robert, o.....	9 e Napier..	625
j	283	Hartman Michael, o.....	pt 2 w Centre..	650
j	287	Hea William, t.....	12 w Centre..	675
	289	Hogg Robert, o.....	pt 10 w Centre..	325
j	353	Hodson William, o.....	2 e Centre..	425
	366	Hiscox George T., o.....	5 e Wharncliff..	425
	375	Hooper John, o.....	28, 29 e Wharncliff..	200
j	326	Henwood Frederick, t.....	3 n Kensington..	525

W *Hamilton William, O. pt 9 n. Alexander St*

j	120	Johnson J. L., o.....	11 s Blackfriars..	400
j	229	Jeffries Luke, t.....	pt 1 s Blackfriars..	500
j	229	Jeffries Stephen, o.....	pt 1 s Blackfriars..	500
j	246	Jeffries Thomas, o.....	30, pt 29 w Albion..	600
j	247	Jeffries A. S., o.....	28, pt 29 w Albion..	800
j	345	Johnson Henry, o.....	5 e Centre..	750
j	365	Jarvis William, t.....	4 e Wharncliff..	425
j	387	Jackson Arthur, t.....	pt 6 s Dundas..	475

j	285	Kelly John, jr., o.....	pt 4 w Centre..	600
	392	Kelly John, sr., o.....	pt 5 e Wharncliff..	3500
	334	Kent M. J., o.....	pt 9 n Alexander..	475

LONDON WEST VOTERS' LIST.

s.... 2650
 l.... 625
 r.... 500
 e.... 525
 e.... 675
 e.... 425
 e.... 450
 e.... 575
 e.... 750
 e.... 750
 e.... 650
 e.... 1250
 e.... 425

	222	Leeder James, t.....	pt 2 s Blackfriars...	475
	244	Lacey R. F., o.....	31 w Albion...	750
	278	Leslie James, o.....	11, 13 n Cherry Ave...	250
	282	Leslie Alex., jr., o.....	16, 17, 18, 19 s Cherry Ave...	450
	310	Lackey John T., o.....	pt 1 w Centre...	575
	343	Leslie Alex., sr., o.....	3, 4 e Centre...	2600
	321	Lackey John, o.....	6 s Kensington...	1250
	337	Lindsay John, t.....	7 n Alexander...	375

j	239	Meehan Patrick, t.....	5, 6 w Napier...	750
	271	Moore Samuel, o.....	7 n Leslie...	325
j	236	Moore George, o.....	8 s Leslie...	500
	349	Minton Thomas S., o.....	1 e Centre...	650
j	322	Morrison R. M., o.....	H s Kensington...	650
	370	Moir James, o.....	4, 5, 6, 7, 8, 9 e Wharnciff...	1900
	371	Moir John, o.....	4, 5, 6, 7, 8, 9 e Wharnciff...	1900
	373	Milroy John, t.....	5, 6, 7 e Wharnciff...	750
	284	Martin Richard, t.....	pt 2 w Centre...	625
	305	Murphy James, t.....	pt 3, 4 w Centre...	225

. 625
 . 650
 . 675
 . 325
 . 425
 . 425
 . 200
 . 525

	225	McLeod Daniel, t.....	pt 1 s Blackfriars...	400
	396	McGoey Thomas, o.....	pt 6 n Dundas...	1000
	299	McCoy James, o.....	9 w Centre...	625
	318	McNeil Wm. T., t.....	pt 18 w Centre...	375
	399	McDonald Jerry, o.....	8 s Dundas...	900
	363	McPherson Hugh, t.....	27 e Wharnciff...	500
	360	McDonald Cameron, t.....	24 e Wharnciff...	450
	364	McNames Silas, t.....	1, 2, 3 e Wharnciff...	800
	385	McClelland Archibald, t.....	pt 5 s Dundas...	350

McCauley John W. J. pt 13 n Dundas

400
 500
 500
 600
 800
 750
 425
 475

j	359	Nicholls Wm., o.....	23 e Wharnciff...	675
j	366	Newman John, t.....	5 e Wharnciff...	425

600
 3500
 475

j	260	O'Sullivan John, o.....	2, 3 e Albion...	600
j	308	Osborne Samuel, t.....	pt 5, 6 w Centre...	425
	394	O'Mara Michael, o.....	pt 3 n Dundas...	875

LONDON WEST VOTERS' LIST.

j	261	Plews Isaac, t.....	1 e Albion...	635
j	263	Price Walter, t.....	9, 10 e Albion...	450
	304	Partidge Thomas, o.....	pt 3, 4, w Centre...	225
j	309	Phair Thomas, t.....	5, 6 w Centre...	425
	309	Phair Henry, o.....	5, 6 w Centre...	425
j	341	Pearce John, t.....	pt 5 e Centre...	650
	395	Reed J., o.....	pt 2 n Dundas...	600
j	216	Simpson John, o.....	18, 19 s Blackfriars...	900
	221	Service Wm., t.....	pt 2 s Blackfriars...	375
	227	Stratford George, t.....	pt 1 s Blackfriars...	300
j	241	Saunby George W., t.....	8 e Napier...	450
j	243	Spence William, o.....	10, 11 e Napier...	1000
j	292	Sells John, t.....	pt 8 w Centre...	475
	308	Scarrow Morris, o.....	pt 18 w Centre...	375
	313	Scarrow William, o.....	4 s Dundas...	375
j	355	Sullivan Hugh, o.....	pt 1 e Centre...	550
j	357	Sinchcombe John, t.....	pt 1 e Centre...	425
	319	Schultze H., t.....	pt 18 w Centre...	450
	361	Sage G. B., t.....	25 e Wharnciff...	600
	361	Sadler W., o.....	25 e Wharnciff...	600
j	382	Stewart Alexander, t.....	3 s Dundas...	525
j	390	Saragan C. L., t.....	8 s Dundas...	900
j	398	Smith Alfred, t.....	pt K n Dundas...	450
	<i>Sweeney James J. pt G. B. Dundas</i>			
j	240	Taylor David L., t.....	7 e Napier...	450
	266	Taylor Thomas, o.....	17 n Peter...	350
	277	Tremeer George, o.....	7 s Leslie...	500
j	379	Taylor Alfred, t.....	14 s Dundas...	425
	303	Taylor Thomas, t.....	pt 3, 4 w Centre...	250
j	316	Vodden William, t.....	pt 4 w Centre...	500
	320	Vanderburg Charles, t.....	pt 18 w Centre...	300
j	400	Vincent Henry, t.....	pt G n Dundas...	450
j	249	Ward Thomas W., o.....	pt 1, 2 w Albion...	500
j	250	Ward John P., o.....	pt 1, 2 w Albion...	500
	252	Ward Richard, o.....	pt 5 w Albion...	400
	253	Ward Joseph, o.....	pt 5, 6 w Albion...	400
j	280	Wood Charles, t.....	14 n Cherry Ave...	450
j	403	Williams Charles W., o.....	6 n Dundas...	875
j	342	Watson George, t.....	pt 5 e Centre...	2500

j 36
j 34
39
40

No.
328

273

228

232
298
337

251

297

254
301
354

263
315

219

238

233
238
290
390

Per
Ba
Lac
Ell
Ell

LONDON WEST VOTERS' LIST.

13

j	365	Weir Robert, o.....	4 e Wharnclyff...	425
j	347	Wilson Thomas, t.....	3 e Centre...	425
	393	Wills Alfred, t.....	pt 3 n Dundas...	250
	403	Wagner O., t.....	6 n Dundas...	875

PART SECOND.

Persons Entitled to Vote at Municipal Elections only.

No.	Name.	Situation.
328	Adams Elizabeth, t.....	1 n Kensington
273	Bolton Jessie, o.....	9, 10 n Leslie
228	Collins Mary A, o.....	pt 1 s Blackfriars
232	Delay Mary, o.....	4, 6, 7 s Blackfriars
298	Drummond Elizabeth, o.....	pt 7 w Centre
337	Darch Mary, o.....	7 n Alexander
251	Griffin Jane, t.....	3, 4 w Albion
297	Long Mary, t.....	pt 7 w Centre
254	Mann Mary, o.....	6 w Albion
301	Metcalf Mary, o.....	2 w Centre
354	Murray Miss E., o.....	1 e Centre
263	Ryan Maggie, o.....	9, 10 e Albion
315	Riley Sarah, t.....	pt 4 w Centre
219	Tillman A., o.....	12 s Blackfriars
238	Umpested Ellen, t.....	4 w Napier
233	Weanor Mary, o.....	5 s Blackfriars
238	Walsh C., o.....	4 w Napier
290	Wallace Agnes, t.....	pt 10 w Centre
390	Wright Mary, o.....	pt 3 n Dundas

PART THIRD.

Persons Entitled to Vote at Elections to the Legislative Assembly only.

NONE.

Bayly, John M.F. Coeurto St
 Lackey William M.F. Kensington St
 Ellis Frederick M.F. S. Alexander St
 Ellis Walter M.F. S. Alexander St

LONDON WEST VOTERS' LIST.

POLLING SUB-DIVISION No. 3.

Comprising that Part of the Village Lying South of Paul Street
and West of the Wharncliff Highway.

PART FIRST.

Persons Entitled to Vote at both Municipal Elections and Elections
to the Legislative Assembly.

No.	Name.	Situation.	Ass't.
j 577	Ackland John, o.....	67, 68, 69 n Charles	425
588	Armitage Samuel, o.....	32 s Charles, and other Property	
453	Barclay Alexander, o.....	3 n Beech...	325
j 450	Birrell George, t.....	5 n Beech...	425
447	Bonsor John, o.....	9, pt 10 n Beech...	250
j 446	Bonsor George, t.....	pt 10, 11 n Beech...	525
441	Bartram Wm. H., o.....	7, 8, 9, 10, 11 s Beech...	1900
j 458	Bailey William, t.....	2, 3, 4 s Maple...	1150
461	Boyle William, t.....	pt 8 s Maple...	300
j 480	Board Thomas, o.....	1 s Walnut...	600
482	Burke W., t.....	pt 2 s Walnut...	400
477	Buskard John, t.....	7 s Mt Pleasant Ave...	475
514	Bide F., o.....	10, 11 s Mt Pleasant Ave...	475
411	Boston Alex. A., t.....	9, 10 w Wharncliff...	675
406	Brown W. L., o.....	3, 4 w Wharncliff...	675
502	Bowers Walter, t.....	pt 1 n Walnut...	425
541	Brown W. J., t.....	14 s Mt Pleasant Ave...	500
550	Brooks Leonard, o.....	6 s Oak...	500
485	Clarke Henry, o.....	5 s Walnut...	375
j 486	Clarke George, o.....	6 s Walnut...	525
476	Cochrane John, t.....	2 n Maple...	275
j 520	Collison T., o.....	27 n Mt Pleasant Ave...	500
565	Churcher Thomas, o.....	pts 32, 33, 34 n Oak...	700
j 423	Cowan Charles, t.....	pt 7 w Wharncliff...	525

LONDON WEST VOTERS' LIST.

j	491	Dewar Alexander, t.....	14, 15 s Walnut...	525
j	555	Daley Dennis, o.....	11 to 17 s Oak...	2600
j	599	Davidson Thomas, o.....	15, 16, 17 s Paul...	430

	440	Ellis Peter, o.....	5, 6 s Beech...	360
--	-----	---------------------	-----------------	-----

j	512	Fortner William, o.....	9 s Mt Pleasant Ave...	500
	526	Fitzgerald W. W., o.....	pt 17 n Mt Pleasant Ave...	2700
j	554	Forward C., o.....	10 s Oak...	410
j	428	Flowers Adam, t.....	10 w Wharnclyff...	525
j	584	Fletcher John W., t.....	39, 40 s Charles...	725
	605	Feekings John, o.....	5 s Paul...	325
	600	Flannery William, o.....	14 s Paul...	325

	467	Grey George, o.....	12, 13, 14, 15 n Maple...	425
j	499	Guymer W., t.....	6 n Walnut...	420
	499	Gatecliff J., o.....	6 n Walnut...	420
j	552	Geiger Henry, o.....	8 s Oak...	450
	413	Glass Archibald, o.....	5, 6 w Wharnclyff...	250
j	569	Griffiths Richard, o.....	51 n Charles...	425
j	575	Griffiths John H., t.....	61, 62, 63, 64 n Charles...	750
	576	Griffith William, o.....	65, 66 n Charles...	240
	604	Glover Thomas, o.....	6 s Paul...	325
	539	Griffith Edward, t.....	16 s Mt Pleasant ave...	600

j	438	Hazelgrove Frederick, t.....	3 s Beech...	500
j	457	Hopkins Thomas, o.....	pt 1 s Maple...	425
	458	Howard Thomas, o.....	2, 3, 4 s Maple...	1150
	485	Hire William, t.....	5 s Walnut...	375
	491	Horsman John, o.....	14, 15 s Walnut...	525
j	502	Hammond Richard, o.....	1 n Walnut...	350
j	503	Hadden William, o.....	A s Mt Pleasant Ave...	400
	504	Heustridge F., t.....	1 s Mt Pleasant Ave...	350

ul Street

Elections

Ass't.

cles 425
erty

... 325
... 425
... 250
... 525
... 1900
... 1150
... 300
... 600

... 400
... 475
... 475
... 675
... 675
... 425
... 500
... 500

375
525
275
590
700
525

LONDON WEST VOTERS' LIST.

j 506 Hadden R., o..... 4 s Mt Pleasant Ave... 600
 613 Hutchinson Charles, o..... G, H, J, K, L, M, N w Chestnut... 250
 454 Hood John, t..... pt 1, 2 n Beech... 450

460 Jones R. A., o..... pt 8 s Maple... 300
 j 481 Jarman George, t..... 2 s Maple... 400
 j 543 Johnson E. F., o..... 37 s Oak... 1440
 563 Jury Edward, o..... 59 n Oak... 325
 j 421 Jones R. A., o..... 4, 5 w Wharnclyff... 1400
 j 541 Jones James E., o..... 14 s Mt Pleasant Ave... 500

582 Kincaide J., sr., o..... 41, 42 s Charles... 300
 510 Kershaw Matthew, t..... pt 7, 8 s Mt Pleasant Ave... 475
 535 Kincaide John, jr, t 19 s Mt Pleasant Ave... 425

517 Lacey Emos, t..... 13, 14 s Mt Pleasant Ave... 390
 517 Lacey S., o..... 13, 14 s Mt Pleasant Ave... 390
 519 Leake F. P., t..... pt 17 s Mt Pleasant Ave... 900
 545 Lings John H., o..... 35, 36 s Oak... 1330
 425 Lyman Stephen, t..... pt 8 w Wharnclyff... 475
 407 Lewis Clifford, o..... 1, 2 w Wharnclyff... 650
 471 Leys Major, o..... 6 n Maple... 425

j 472 Moore John, o..... 5 n Maple... 485
 482 Morley Charles, o..... pt 2 s Walnut... 400
 521 Mountjoy R., o..... pt 17 s Mt Pleasant Ave... 975
 520 Mountjoy C., t..... pt 17 s Mt Pleasant Ave... 300
 5: ? Mountjoy A., o..... pt 17 s Mt Pleasant Ave... 975
 524 Murdock Alexander, o..... pt 19 s Mt Pleasant Ave... 3500
 535 Moran Jerry, o..... 19 n Mt Pleasant Ave... 425
 556 Mercer James, o..... 49, 50 n Oak... 225
 593 Moran John, o..... 12, 13 s Paul... 300

W Macdonald Richard. J. 2 N. Walnut St
 W Moore James J. 4 S. Beech St

LONDON WEST VOTERS' LIST.

Ave... 600
 nut... 250
 ech... 450

456 McCoy George, o..... pt 1 s Maple... 425
 551 McIntyre Archibald, o 7 s Oak... 200
 452 McCloud John, t..... pt 2-n Beech... 450

ple... 300
 ple... 400
 ak... 1440
 ak... 325
 liff... 1400
 ve... 500

j 449 Northmore Charles, t.....6, 7 n Beech... 415
 558 Nixon William, o.....52 n Oak... 400

es... 300
 ve... 475
 ve... 425

445 O'Callaghan Thomas, o.....12, 13 n Beech... 300
 j 484 Osmond Henry, t..... 3 s Walnut... 500
 j 471 Osborne Walter, t..... A s Mt Pleasant Ave... 400
 573 O'Rourke John, o.....59 n Charles... 325
 530 Osborne Wm. A., t.....27 n Mt Pleasant Ave... 500

re... 390
 re... 390
 re... 900
 k... 1330
 ff... 475
 ff... 650
 e... 425

j 436 Payne John, t.....pt C and 1 s Beech... 525
 459 Pooock John J., o..... 5, 6, 7 s Maple... 650
 j 473 Pudnev Edward, o..... pt 4 n Maple... 450
 j 478 Pring John, o.....pt B s Walnut... 450
 j 544 Peters S. F., o.....pt 37 s Oas... 1380
 j 553 Peddle Samuel, o.....9 s Oak... 415
 566 Pudnev William, o.....pt 32, 33. 34 n Oak... 230
 415 Payne Richard, t..... 1, 2, 3 w Wharncliff... 800
 537 Pudnev Robert, t.....18 s Mt Pleasant Ave... 515

... 485
 ... 400
 ... 975
 ... 300
 ... 975
 ... 3500
 ... 425
 ... 225
 ... 300

i 444 Reidy Michael, t..... 14, 15, 16 n Beech... 525
 i 444 Reidy John, o.....14, 15, 16 n Beech... 525
 j 475 Ramsay H., o.....3 n Maple... 450
 516 Rockett R. S., o..... 12 s Mt Pleasant Ave... 475
 428 Rattery John, o..... 10 w Wharncliff... 525
 412 Rathburn J. o.....7, 8 w Wharncliff... 275
 j 568 Robinson William, o.....50 n Charles... 500
 419 Rodier L. G., t.....pt 3 w Wharncliff... 350

t. So
 AB

LONDON WEST VOTERS' LIST.

j	455	Stinson George, t.....	pt 1 n Beech...	425
j	450	Stinchcombe Reuben, o.....	5 n Beech...	425
	436	Slater C. B., o.....	pt C and 1 s Beech...	525
j	489	Spry James, o.....	13 s Walnut...	475
j	513	Sara John, o.....	10 s Mt Pleasant Ave...	475
j	515	Sheffield H. C., t.....	11 s Mt Pleasant Ave...	475
j	518	Smith Walter, o.....	15, 16, 17 s Mt Pleasant Ave...	3100
j	524	Stanton John, o.....	pt 7 w Wharnclyff...	500
j	415	Smith Conrad B., o.....	1, 2, 3 w Wharnclyff...	800
j	407	Spence De Witt, t.....	1, 2 w Wharnclyff...	650
j	497	Stephens John, t.....	11 n Walnut...	360
j	511	Stephens Charles, t.....	pt 8 s Mt Pleasant Ave...	475
j	439	Twitchen John, o.....	4 s Beech...	400
j	487	Tolhurst Edward, t.....	8, 9, 10 s Walnut...	275
	536	Tanton John, o.....	2 ^o n Mt Pleasant Ave...	
	418	Trebilcock Thomas, t.....	pt 3 w Wharnclyff...	350
	578	Tweed John, o.....	48 s Charles...	
j	422	Vodden Sydney, t.....	pt 6 w Wharnclyff..	425
j	456	Westlake Frank G., t.....	pt 1 s Maple..	425
j	505	Walker John, o.....	2, 3 s Mt Pleasant Ave..	675
	523	Ware James, o.....	19 s Mt Pleasant Ave..	560
	539	Wilson James H., o.....	23, 25, 26 n Mt Pleasant Ave..	460
j	538	Wade John H., o.....	17 n Mt Pleasant Ave..	600
	429	Wyatt William, o.....	pt 11, 12 w Wharnclyff..	470
	584	Ward John, o.....	39, 40 s Charles..	725
	597	Walsh John, o.....	20, 21, 22, 23 s Paul..	200
j	479	Wade Joseph, t.....	pt 1 s Walnut..	450
	603	Westby Walter, o.....	7, 8, 9 s Paul..	200
	553	Yelland Samuel, t.....	9 s Oak..	415

LONDON WEST VOTERS' LIST.

PART SECOND.

Persons Entitled to Vote at Municipal Elections Only.

No.	Name.	Situation.
548	Cooper E'iza, o.....	4 s Oak
590	Friend Catherine, o	36 to 41 s Paul
575	Griffiths Keziah, o	61, 62, 63, 64 n Charles
438	Hazelgrove Eliza, o....	3 s Beech
419	Jones Miss H., o	3 w Wharncliff
417	Livingston Emma, o.....	2 w Wharncliff
519	Leake Grace, o	pt 17 s Mt Pleasant Ave
602	Ryan Bridget E., t	10, 11 s Paul
411	Small Margaret, o	9, 10 w Wharncliff
532	Shaw Emeline, o.....	24 n Mt Pleasant Ave
546	Turville Hannah, t.....	1, 2 s Oak

h... 425
h... 425
h... 525
t... 475
e... 475
e... 475
e... 3100
f... 500
f... 800
f... 650
... 360
... 475

... 400
... 275
... 350

425

425
675
560
460
600
470
725
200
450
200

15

PART THIRD.

Persons Entitled to Vote at Elections to the Legislative Assembly only.

NONE.

W Osborne Allest. M. F. Mt Pleasant Ave.

I, Thomas S. Minton, Clerk of the Municipality of London West, in the County of Middlesex, do hereby certify that Parts One and Three of the within List constitute a correct List for the year 1889 of all persons appearing by the last Revised Assessment Roll of the said Municipality to be entitled to vote at Elections for Members of the Legislative Assembly, and that Parts One and Two constitute a correct List for said year of all persons appearing by the said Roll to be entitled to vote at Municipal Elections in the said Municipality; and I hereby call upon all Electors to examine the said List, and if any omissions or other errors are perceived therein, to take immediate proceedings to have the same errors corrected according to law.

Dated this 30th day of April, 1889.

T. S. MINTON,
Clerk of London West.

I hereby certify that the number of Jurors is 257.

T. S. MINTON, Clerk.

214 HANOVER ST 18 X 6 V 54 DE

CAHONKON 18 X 6 V54 OE

over

