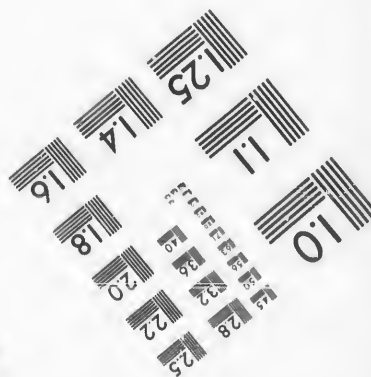
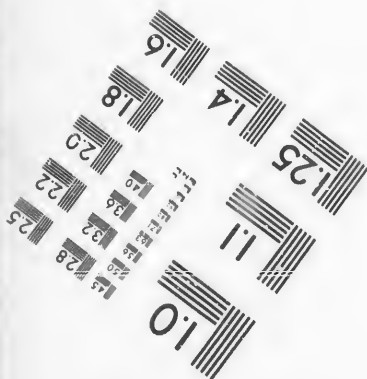
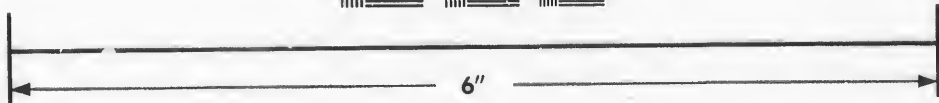
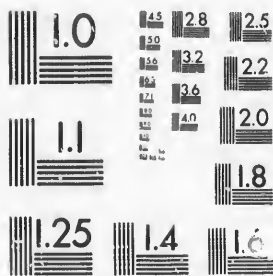


**IMAGE EVALUATION  
TEST TARGET (MT-3)**



**Photographic  
Sciences  
Corporation**

23 WEST MAIN STREET  
WEBSTER, N.Y. 14580  
(716) 872-4503

**CIHM/ICMH  
Microfiche  
Series.**

**CIHM/ICMH  
Collection de  
microfiches.**



Canadian Institute for Historical Microreproductions / Institut canadien de microreproductions historiques

**© 1987**

Technical and Bibliographic Notes/Notes techniques et bibliographiques

The Institute has attempted to obtain the best original copy available for filming. Features of this copy which may be bibliographically unique, which may alter any of the images in the reproduction, or which may significantly change the usual method of filming, are checked below.

L'Institut a microfilmé le meilleur exemplaire qu'il lui a été possible de se procurer. Les détails de cet exemplaire qui sont peut-être uniques du point de vue bibliographique, qui peuvent modifier une image reproduite, ou qui peuvent exiger une modification dans la méthode normale de filmage sont indiqués ci-dessous.

- Coloured covers/  
Couverture de couleur
- Covers damaged/  
Couverture endommagée
- Covers restored and/or laminated/  
Couverture restaurée et/ou pelliculée
- Cover title missing/  
Le titre de couverture manque
- Coloured maps/  
Cartes géographiques en couleur
- Coloured ink (i.e. other than blue or black)/  
Encre de couleur (i.e. autre que bleue ou noire)
- Coloured plates and/or illustrations/  
Planches et/ou illustrations en couleur
- Bound with other material/  
Relié avec d'autres documents
- Tight binding may cause shadows or distortion along interior margin/  
La reliure serrée peut causer de l'ombre ou de la distorsion le long de la marge intérieure
- Blank leaves added during restoration may appear within the text. When possible, these have been omitted from filming/  
Il se peut que certaines pages blanches ajoutées lors d'une restauration apparaissent dans le texte, mais, lorsque cela était possible, ces pages n'ont pas été filmées.
- Additional comments:/  
Commentaires supplémentaires:

Pagination is as follows : [1] - 13, 41 p.

- Coloured pages/  
Pages de couleur
- Pages damaged/  
Pages endommagées
- Pages restored and/or laminated/  
Pages restaurées et/ou pelliculées
- Pages discoloured, stained or foxed/  
Pages décolorées, tachetées ou piquées
- Pages detached/  
Pages détachées
- Showthrough/  
Transparence
- Quality of print varies/  
Qualité inégale de l'impression
- Includes supplementary material/  
Comprend du matériel supplémentaire
- Only edition available/  
Seule édition disponible
- Pages wholly or partially obscured by errata slips, tissues, etc., have been refilmed to ensure the best possible image/  
Les pages totalement ou partiellement obscurcies par un feuillet d'errata, une pelure, etc., ont été filmées à nouveau de façon à obtenir la meilleure image possible.

This item is filmed at the reduction ratio checked below/  
Ce document est filmé au taux de réduction indiqué ci-dessous.

10X	14X	18X	22X	26X	30X
<input type="checkbox"/>	<input type="checkbox"/>	<input type="checkbox"/>	<input checked="" type="checkbox"/>	<input type="checkbox"/>	<input type="checkbox"/>
12X	16X	20X	24X	28X	32X

The copy filmed here has been reproduced thanks to the generosity of:

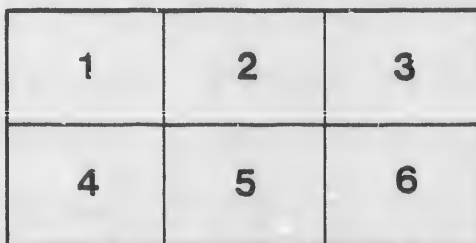
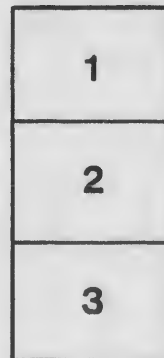
D. B. Weldon Library  
University of Western Ontario  
(Regional History Room)

The images appearing here are the best quality possible considering the condition and legibility of the original copy and in keeping with the filming contract specifications.

Original copies in printed paper covers are filmed beginning with the front cover and ending on the last page with a printed or illustrated impression, or the back cover when appropriate. All other original copies are filmed beginning on the first page with a printed or illustrated impression, and ending on the last page with a printed or illustrated impression.

The last recorded frame on each microfiche shall contain the symbol  $\rightarrow$  (meaning "CONTINUED"), or the symbol  $\nabla$  (meaning "END"), whichever applies.

Maps, plates, charts, etc., may be filmed at different reduction ratios. Those too large to be entirely included in one exposure are filmed beginning in the upper left hand corner, left to right and top to bottom, as many frames as required. The following diagrams illustrate the method:



L'exemplaire filmé fut reproduit grâce à la générosité de:

D. B. Weldon Library  
University of Western Ontario  
(Regional History Room)

Les images suivantes ont été reproduites avec le plus grand soin, compte tenu de la condition et de la netteté de l'exemplaire filmé, et en conformité avec les conditions du contrat de filmage.

Les exemplaires originaux dont la couverture en papier est imprimée sont filmés en commençant par le premier plat et en terminant soit par la dernière page qui comporte une empreinte d'impression ou d'illustration, soit par le second plat, selon le cas. Tous les autres exemplaires originaux sont filmés en commençant par la première page qui comporte une empreinte d'impression ou d'illustration et en terminant par la dernière page qui comporte une telle empreinte.

Un des symboles suivants apparaîtra sur la dernière image de chaque microfiche, selon le cas: le symbole  $\rightarrow$  signifie "A SUIVRE", le symbole  $\nabla$  signifie "FIN".

Les cartes, planches, tableaux, etc., peuvent être filmés à des taux de réduction différents. Lorsque le document est trop grand pour être reproduit en un seul cliché, il est filmé à partir de l'angle supérieur gauche, de gauche à droite, et de haut en bas, en prenant le nombre d'images nécessaire. Les diagrammes suivants illustrent la méthode.

# VOTER'S LIST

—OF THE—

MUNICIPALITY

—OF—

# LONDON WEST

—FOR—

THE YEAR 1883.

---

London, Ont.:

ADVERTISER PRINTING COMPANY, RICHMOND STREET.

1883.

*Read  
Box 14/83*



# VOTERS' LIST

—OF THE—

## MUNICIPALITY OF LONDON WEST

### FOR 1883.

#### POLLING SUB-DIVISION No. 1.

Comprising the Whole of the Village north of Blackfriars and Paul Streets.

#### PART FIRST.

Persons Entitled to Vote at both Municipal Elections and Elections to the Legislative Assembly.

No.	Name.	Situation.	Asses't.
j 5	Armstrong C B, o.....	pt 2 n Blackfriars..	600
43	Addison Alex, t.....	43 s Ann..	500
47	Ashton Frederick, t.....	37 s Ann..	700
j 75	Anderson Alexander, t.....	61 s Oxford..	400
j 87	Arscott Robert, t.....	71 w John..	650
15	Barham Thomas, o.....	10 n Blackfriars..	950
38	Brooks George F t.....	28, 29 s Ann..	450
54	Butler Frederick, t.....	pt 40 s Ann..	200
59	Bowman George, o.....	pt 44 n Ann..	350
j 60	Bowman John, o.....	pt 44, 45 n Ann..	550
j 68	Bartlett George, o.....	49 n Ann..	400
j 82	Boon John, o.....	67 w John..	400
j 119	Bailey William, t.....	2 e Wharncliff..	750
j 136	Borland David, o.....	4 n Saunby..	400
138	Bailey William, t.....	7 e Irwin...	300
j 171	Broadway Nehemiah, o.....	pt 17 w Wharncliff..	1500
j 7	Campbell James, t.....	4, 5 n Blackfriars..	1050
10	Collins Daniel, o.....	pt 7 n Blackfr...rs..	500
31	Campbell James, o.....	pt 21, 22 s Ann..	100
37	Crockett Charles, t.....	pt 28, 29 s Ann..	300
39	Campbell James, o.....	pt 28, 29 s Ann..	400
56	Collins Daniel, o.....	pt 1, 41 e Napier..	1000
63	Cotterall William, t.....	pt 46 n A n..	300
74	Collins Daniel, o.....	60 n Que a..	300
j 82	Crockett John, t.....	67 w John..	400
91	Calver George, o.....	75 e William..	300
111	Collins John, o.....	5 n Oxford...	350
133	Clarke Henry, o.....	pt 20 n Saunby...	225
i 148	Cushing William, o.....	pt 16 e Wharncliff..	750

## LONDON WEST VOTERS' LIST.

No.	Name.	Situation.	Assessm't.
2	Draper John, t	pt 1 n Blackfriars	500
13	Daniels John, jr., t	pt 7 n Blackfriars	250
45	Deans James, t	35, 36 s Ann	800
45	Deans Albert, t	35, 36 s Ann	
80	Daniels James, o	.65 w John	350
85	Davidson Thomas, jr., t	pt 70 w John	350
97	Daniels James, jr., t	pt 80 e William	250
137	Davidson Thomas, o	pt 2 n Saunby	525
j 3	Evans John, o	pt 2 n Blackfriars	500
6	Evans John, o	pt 3 n Blackfriars	750
147	Elson William, o	pt 6 e Wharnclyff	650
j 149	Essery Matthew, t	2 n Mill	700
30	Freman George, t	pt 21, 22 s Ann	350
j 33	Fawkes George, o	25 s Ann	600
35	Fawkes George, o	pt 25 s Ann	600
50	Fawkes George, o	pt 40 s Ann	250
151	Fowler Thomas, t	pt 1 n Mill	550
j 159	Fernley George, o	pt 1 w Wharnclyff	2000
j 11	Graham Thomas, t	pt 7 n Blackfriars	500
29	Gillespie Charles, t	pt 21, 22 s Ann	400
45	Gibson Robert, o	34 s Ann	525
49	Gibson George, o	39 s Ann	600
57	Glass David, o	.42 n Ann	250
65	Gunn Alexander, t	.48 n Ann	350
j 73	Gibson Samuel, o	57, 58, 59 n Queen	950
76	Gregory Alfred, t	.62 w John	375
92	Greenway William H, o	.76 e William	375
108	Graham Robert, o	.8, 9 e Gunn	250
109	Gaham Henry B, t	10, 11 n Oxford	600
125	Gillespie Robert, o	6 s Saunby	450
140	Grant Peter, t	1, 2 n Saunby	550
j 140	Gaant James E, t	1, 2 n Saunby	550
149	Gammage James, o	2 n Mill	700
163	Gower Stephen, o	pt 2 n Oxford	1500
175	Glass William, o	10, 11 s Caroline	375
178	Glass Samuel Frank, o	pt 17 w Wharnclyff	600
178	Glass Charles F, o	pt 17 w Wharnclyff	
j 8	Hickson Elliott, t	pt 6 n Blackfriars	400
9	Hickson Samuel, t	pt 6 n Blackfriars	400
41	Houghton Edward, o	30 s Ann	650
70	Hutchinson James, t	51 n Ann	490
j 83	Hardy Edward, o	.68 w John	400
98	Hayes Jeremiah, o	.81 e William	350
104	Hammond Levi, o	.4 w Gunn	275
105	Hammond Levi, o	.5 w Gunn	300
j 109	Heal Charles, o	10, 11 n Oxford	600
124	Hurley Jeremiah, o	5 s Saunby	450



## LONDON WEST VOTERS' LIST.

3

No.	Name.	Situation.	Asses't.
145	Hoolihan Thomas, t.....	pt 6½ e Wharncliff..	550
181	Hodgins Raiph, o.....	pt 17 w Wharncliff..	650
37	Irvine William, c.....	pt 28, 29 s Ann..	300
27	Johnston Alexander, t.....	pt 13 n Blackfriars..	375
j 5	Johnston Ben, t.....	pt 2 n Blackfriars..	600
j 42	Jolly George C, o.....	pt 21 s Ann..	575
j 155	Jones William, t.....	2 s Grosvenor..	600
66	Kenny Andrew, o.....	pt 48 n Ann..	300
162	Kennedy Robert, t.....	pt 2 n Oxford..	200.
19	Lavrie Albert, t.....	pt 13 n Blackfriars..	300
j 5	Leslie James, t.....	pt 2 n Blackfriars..	600
j 24	Leigh John B, o.....	pt 19 n Blackfriars..	400
j 121	Lawrence William, t.....	pt 1, 2, 3 e Wharncliff..	650
j 135	Lethbridge John W, o.....	22, 23 n Saunby..	425
154	Long George, t.....	pt 16 n Mill..	250
175	Lear William, t.....	10, 11 s Caroline..	375
7	Murray R S, o.....	45 n Blackfriars..	1050
18	Middleton William, t.....	pt 13 n Blackfriars..	300
j 23	March William, t.....	pt 19 n Blackfriars..	400
44	Mercer John, o.....	33 s Ann..	200
62	Mallin Thomas, t.....	pt 45, 46 n Ann..	300
j 67	Mercer John, t.....	pt 48 n Ann..	400
j 103	Moore William, o.....	1, 2, 3 n Oxford..	900
j 150	Mansfield Alfred, t.....	pt 1 n Mill..	800
150	Mahon James A, o.....	pt 1 n Mill..	800
157	Macdonald A J B, o.....	pt 1 s Grosvenor..	2600
158	Macdonald D C o.....	pt 2 s Grosvenor..	3000
j 167	Metherall John, t.....	pt 17 s Oxford..	550
28	McDonald Jeremiah, o.....	pt 21, 22 s Ann..	250
l 71	McRoberts William, t.....	52 s Queen..	400
j 71	McRoberts Alex, t.....	52 s Queen..	400
101	McIver William, o.....	85 w William..	350
107	McIntyre Peter, o.....	7 e Gunn..	300
j 168	McCarthy Patrick, o.....	pt 17 s Oxford..	700
170	McArthur Malcolm, o.....	4, 5, 6 w Wharncliff..	370
96	Nixon William H, t.....	pt 80 e William..	250
j 164	Nixon Joseph, o.....	3 n Oxford..	3250

## LONDON WEST VOTERS' LIST.

No.	Name.	Situation.	Asses't.
58	Owen William, t.	pt 43 n Ann.	300
j 131	Odell Ernest, t.	15, 16 s Saunby.	450
12	Parkinson Thomas, t.	pt 1 n Blackfriars.	250
22	Peters Bros, o.	15, 16, 17, 18 n Blackfriars.	700
32	Peters Bros, o.	23 s Ann.	200
j 40	Parkinson Thomas, t.	pt 28, 29 s Ann.	500
46	Pillow Thomas, o.	35, 36 s Ann.	800
47	Pincombe William, o.	37 s Ann.	700
61	Pace Thomas t.	pt 45 n Ann.	300
86	Pepper Frederick, t.	pt 70 w John.	350
100	Peters Bros, o.	83, 84 e William.	350
102	Peters Bros, o.	86 to 108 e William.	3200
112	Price John, t.	7 e Grace.	250
121	Platt John, o.	pt 1, 2, 3 e Wharnciff.	650
j 123	Pook Frederick, o.	4 s Saunby.	450
j 144	Purdie James, o.	pt 4 e Wharnciff.	350
146	Plummer John, o.	6 e Wharnciff.	400
155	Peters Bros, o.	2 s Grosvenor.	600
156	Peters Bros, o.	3 s Grosvenor.	500
160	Paul Charles, t.	pt 1 w Wharnciff.	200
165	Peters Bros, o.	pt 17 s Oxford.	1000
166	Peters Bros, o.	pt 17 s Oxford.	400
j 170	Palmer James, o.	pt 17 w Wharnciff.	1500
174	Pepper William, t.	pt 7, 8, 9 n Caroline.	350
j 183	Pinnell Lawrence, t.	pt 1, 2 w Wharnciff.	600
j 14	Root Edward, t.	9 n Blackfriars.	650
j 14	Rogers James, o.	9 n Blackfriars.	650
52	Reeves William, t.	pt 40 s Ann.	200
53	Richardson Samuel, t.	pt 40 s Ann.	200
j 72	Rupee Louis, o.	53, 54, 55 s Queen.	700
161	Rudd C B, o.	1 w Wharnciff.	1200
j 21	Sims William, o.	14 n Blackfriars.	550
51	Sparksman James, t.	pt 40 s Ann.	200
j 48	Switzer ———, t.	38 s Ann.	750
j 64	Smith William, o.	47 s Ann.	750
79	Stratfold George, t.	pt 64 w John.	250
94	Smart Alfred, o.	78 e William.	450
122	Stevens John, t.	pt 1, 23, s Saunby.	350
122	Stevens William, o.	pt 1, 23, s Saunby.	350
126	Sharp Archibald, o.	77 s Saunby.	200
j 127	Southwell William, t.	8 s Saunby.	400
128	Steivens Thomas, o.	9 s Saunby.	450
j 139	Stinchcombe William, o.	5, 6 w Irvine.	600
142	Smith George M, t.	pt 4 e Wharnciff.	800
j 143	Smith William, t.	pt 4 e Wharnciff.	800
151	Stanton Albert, o.	pt 1 n Mill.	550
152	Saunby J D, o.	pt 16 n Mill.	10000
153	Saunby George, t.	pt 17 n Mill.	250
176	Steeles Peter, o.	1, 2 s Caroline.	300
177	Steeles Peter, o.	pt 17 w Wharnciff.	300

LONDON WEST VOTERS' LIST.

5

No.	Name.	Situation	Asses't.
130	Thomas William, o.	14 s Saunby	450
j 16	Wright Gibson, o	12 n Blackfriars	550
17	Wright Gibson, o	13 n Blackfriars	750
34	Wool William, t.	pt 25 s Ann	200
j 38	Wheaton Albert, o.	pt 28, 29 s Ann	450
57	Ward John, t.	43 n Ann	250
77	Ward James, t.	63 w John	350
79	Wilkinson John, o.	pt 64 w John	250
88	Wattam John, o.	72 w John	850
93	Wheaton Albert, t.	77 e William	450
95	Wonnacott Robert, o.	79 e William & 66 w John	350
110	Wilkinson James, o.	6 n Oxford	350
117	Ware Henry, o.	1 n Oxford	375
j 147	Waldock Charles P, t.	pt 16 e Wharnclyff	650
j 161	Woodward Francis, t.	pt 1 w Wharnclyff	1200
j 173	Whittaker Joseph, o.	3 w Wharnclyff	475
j 123	Young Josiah, t.	4 s Saunby	450

PART SECOND.

Persons entitled to vote at Municipal Elections only.

NONE.

PART THIRD.

Persons entitled to vote at Elections to the Leg's'lative Assembly only

NONE.

**POLLING SUB-DIVISION No. 2**

Comprising that part of the Village lying south of Blackfriars Street  
and east of the Wharnclyff Highway,

**PART FIRST.**

Persons entitled to vote at both Municipal Elections and Elections  
to the Legislative Assembly.

No.	Name.	Situation.	ASSENT.
	Abram R, o	A D s Kensington...	400
j	Anderson Jas H, t	pt 9 n Dundas	450
j	Andrews Joseph, o	22, 23, 26 n Lackey..	800
	"	..24 s Lackey	400
	Anderson Peter, o	.. 6 e Centre	375
	Albertson Hiram, o	.. 3 n Kensington..	375
	Axtell George, t	.. pt 3, 4 w Centre..	250
j	Andrews David, t	pt 10, 11 s Alexander..	550
	Armstrong William, t	.. pt 10 w Centre	275
j	Armstrong Allen, t	.. pt 1, 2 w Albion..	450
	403 Barrett William, t	..pt 18 w Centre..	350
j	405 Bright W H. t	.. pt 18 w Centre..	400
j	424 Berry George, t	..pt 6 s Dundas..	500
j	425 Barrett P, o	.. pt 6 s Dundas..	750
j	440 Bending A, o	.. .. 3 e Centre..	450
j	444 Bradly J G, o	.. .. 8 s Leslie..	450
j	457 Black George, t	.. .. 6 e Centre..	425
j	460 Bolton James, o	.. .. 9, 10 n Leslie..	425
j	463 Butler Alfred, o	.. .. 14 s Peter..	300
j	480 Botten William, o	.. .. 2 s Blackfriars..	500
j	491 Brodie John, o	.. 13, 14 15 n Kensington..	800
j	557 Briggs James, t	.. .. 1, 2, 3 e Wharnclyff..	800
j	577 Bogne Arthur, t	.. ..pt 1 s Blackfriars..	400
	388 Castle James, t	.. ..pt 3 w Centre..	475
j	407 Culbert Thomas, o	.. .. 17, 19, 20, 21 s Dundas..	900
j	416 Chapman John, o	.. .. 15, 16 s Dundas..	850
j	457 Collins Dennis, o	.. .. 6 e Centre	425
j	468 Collins Daniel, o	.. .. pt 1 "	275
j	473 Collins Stephen, t	.. .. pt 1 s Blackfriars..	2550
j	484 Coffey Thomas, o	.. .. 5, 6 w Napier..	700
j	496 Collins Daniel, o	.. .. 5, 6, 7 w Wharnclyff..	475
j	520 Currie A, t	.. ..pt 7 w Centre..	450
j	537 Cooney William, t	.. .. 5, 6, 7, 8 e Albion..	550
j	537 " Patrick, o	.. .. 5, 6, 7, 8 e Albion..	400
j	544 Cushing James, t	.. .. pt 1 w Albion..	800
j	557 Campbell James, o	.. .. 1, 2, 3 e Wharnclyff	800
j	565 Campbell Duncan, o	.. .. 21 s Blackfriars..	050
j	568 "	.. .. 14, 15, 16, 17 s "	100
j	569 Conckley F E, t	.. ..pt 13 s "	550
	446 Duff William, o	.. .. 10 s Leslie..	300
	453 Downing R. t	.. .. 1 e Centre..	275

LONDON WEST VOTERS' LIST.

No.	Name.	Situation.	Amount.
j 474	Daniels James, t.....	pt 1 s Blackfriars..	700
477	Delay D, o.....	4, 6, 7 s " ..	600
481	Donaghy W o.....	3 s " ..	600
485	" R, t.....	7 " Napier..	400
j 515	" A, o.....	8 w Centre..	650
531	" A, o.....	8 e Albion..	250
j 533	" T, o.....	5, 6 e " ..	550
547	Dark M, o.....	3, 4 w " ..	700
551	Dempsey R, t.....	22 e Wharnclyff..	350
j 577	Dutton W, o.....	pt 1 s Blackfriars..	400
j 436	English Henry, o.....	pt 5 e Centre..	2500
459	Elliott E, o.....	8 n Leslie..	375
479	Evans John, o.....	1 s Blackfriars..	225
j 506	Ellis Jas, o.....	12 s Alexander..	400
j 508	Egleton Thomas, o.....	pt 9 n " ..	450
j 413	Fisher Andrew, t.....	pt 13 s Dundas..	400
433	Fraser A, o.....	5 n " ..	1500
j 456	Fuller D W, o.....	5 e Centre..	400
j 476	Flannery Jeremiah, o.....	3 s Blackfriars..	400
j 394	Gash R, o.....	3 s Kensington..	600
j 404	Guppy W, t.....	pt 13 w Centre..	550
406	Geen T, t.....	18 w " ..	400
j 445	Gorman W, o.....	9 s Leslie..	475
j 450	Goodacre G, o.....	14 Cherry Avenue ..	400
j 455	Garrett William J, o.....	4, 3 e Centre..	700
467	Glover Thomas, t.....	18 n Peter..	350
519	Godland E, o.....	7 w Centre..	400
j 526	Gibson Charles, o.....	12 w " ..	550
j 536	Gibson William, o.....	1 e Albion..	500
j 556	Gunn R M, t.....	27 e Wharnclyff..	475
574	Gurd J R, o.....	1 s Blackfriars..	2500
432	Horseman J, t.....	pt 3 n Dundas..	1200
j 454	Hodson A, t.....	2 e Centre..	425
j 454	Hodson W, t.....	2 e " ..	425
470	Hunt Alfred, t.....	pt 1 e " ..	275
483	Henwood W H, t.....	pt 4 w Napier..	250
j 486	Hagey William, t.....	8 e " ..	400
j 487	Hookway R, o.....	9 e " ..	600
j 505	Hennessy R, t.....	pt 10, 11 s Alexander..	550
524	Hardy Joseph, t.....	pt 10 w Centre..	300
525	Hodson R, t.....	11 w " ..	350
j 529	Hobbs John, t.....	pt 2 w " ..	525
j 530	Hartman M, o.....	2 w " ..	550
632	Hastings T, o.....	7 e Albion..	225
256	Hiscox Thomas o.....	5 e Wharnclyff..	350
j 564	Hutchinson J, t.....	pt 2 s Blackfriars..	500
493	Hammond R, o.....	2 n Kensing ..	250

## LONDON WEST VOTERS' LIST.

No.	Name.	Situation.	A es't
j 442	Johnston Henry, o.	5 e Centre	675
443	" T H, o.	6 e "	675
j 465	Jewell John, o.	16 n Peters	450
j 472	Jefferies Luke, t.	pt 1 s Blackfriars	475
j 472	Jefferies Stephen, o.	" "	475
j 542	Jefferies Thomas, o.	30 pt 29 w Albion	550
j 543	Jefferies Arthur S, o.	pt 29, 28 w "	400
j 553	Jeffrey Henry, t.	24 e Wharnclyff	400
j 571	Johnson John L, o.	11 s Blackfriars	400
578	Johnson E F, o.	38 Oak and Pine	1200
j 497	Kelley John, o.	8, 9, 10, 11, 12, 13, 14 e Wharnclyff	1050
j 498	" "	" " " " " "	3300
502	Kelley Patrick, t.	pt 3, 4 w Centre	250
503	Kimber George, t.	" "	275
j 527	Kelley John, o.	pt 4 w "	550
j 392	Lackey John, o.	pt 6 s Kensington	1050
j 399	Lackey John J, o.	9 n Dundas	450
j 406	Laskey William, o.	pt 18 w Centre	400
j 533	Lind William, o.	5 n Dundas	1500
j 437	Leslie Alex, o.	3, 4 e Centre	2800
j 507	Lively J T, o.	pt 9 n Alexander	450
j 517	Lord John, t.	pt 7 w Centre	425
j 539	Lacey R F, o.	33 w Albion	650
j 560	Lane C, t.	6 e Wharnclyff	425
j 580	Ling J H, o.	35, 36 Oak and Pine	1150
j 393	Morrison R, o.	5 s Kensington	550
j 401	Marchant W, t.	pt K n Dundas	450
j 410	Morley C A, o.	25 e Wharnclyff	400
i 715	Maden W, t.	14 s Dundas	400
j 418	Moorehead C, t.	pt 4 s "	500
438	Minton T S, o.	1 e Centre	650
j 439	Mercer John, t.	2 e "	850
458	Moore Samuel jr, o.	7 n Leslie	300
467	Miller Walter, b.	18 n Peters	350
j 484	Meehan P, t.	5, 6 w Napier	700
j 492	Moiden Wesley, t.	1 n Kensington	400
500	Morley Henry, t.	pt 3, 4 w Centre	250
j 511	Metcalf John, o.	1 w "	600
522	Moore Samuel, sr, o.	9 w "	300
j 555	Milroy J, t.	27 e Wharnclyff	475
j 563	Meggs George, t.	4 to 9 Moirs Block	1700
563	Moor James, o.	" "	"
576	Macadams T, t.	pt 1 s Blackfriars	350
j 399	McDonald Jas, t.	pt 9 n Dundas	450
427	McDonald Jerry, o.	8 s "	1200
434	McGoey Thus, o.	pt 5 n "	1300
501	McHugh Charles, t.	pt 3, 4 w Centre	200

## LONDON WEST VOTERS' LIST.

9

No.	Name.	Situation.	Asses't.
	510 McAuly T B, t.....	7 n Alexander..	325
j	514 McCoy James, o.....	9 w Centre..	800
j	547 McLean L, t.....	3, 4 w Albion..	700
j	547 McLean A, t.....	" " " "	700
	562 McDowell James, o.....	3 e Wharncliff..	275
j	552 Nichols William, o.....	23 e Wharncliff..	625
	559 Newman John, t.....	5 e " "	350
	389 Oldridge Eli, t.....	pt 4 w Centre..	325
j	535 O'Sullivan John, o.....	2, 3 e Albion..	575
	562 Osborne Alfred, t.....	3 e Wharncliff..	275
j	386 Pearce Charles t.....	pt 2, 3 w Centre.	475
j	390 Powers M J, t.....	pt 4 w " "	475
j	420 Patterson M J, t.....	pt 4 s Dundas..	500
	462 Peters Bros, o.....	12, 13 s Peters..	250
	490 Phair Henry, o.....	5, 6 w Centre..	
	490 Phair Thomas, t.....	pt 5, 6 w " "	450
	504 Partridge T, o.....	10, 11 s Alexander..	
j	573 Payne J, t.....	pt 2 s Blackfriars..	400
j	579 Peters S F, o.....	37 Oak and Pine..	1100
j	387 Rogers Thos, t.....	p 2, 3 w Centre..	475
j	435 Raynor D, t.....	pt 5 e Centre..	1100
j	402 Shupe Edward, t.....	pt K n Dundas..	450
	403 Scarrow Morris, o.....	pt 18 w Centre..	350
j	419 Smith William, t.....	pt 4 s Dundas..	350
	421 Scarrow William, o.....	pt 5 s Dundas..	500
	431 Smith William, o.....	3 n Dundas..	300
j	433 Scott R, o.....	5 n Dundas..	1500
	464 Stinchcombe J, t.....	15 n Peters..	325
j	471 Sullivan Hugh, o.....	pt 1 e Centre..	450
	475 Sicily Josiah, t.....	pt 1-2 s Blackfriars..	375
j	485 Saunby Stephen, o.....	7 e Napier..	400
	488 Spence William, o.....	10-11 e Napier..	800
	518 Stratfold E, o.....	7 w Centre..	325
	558 Sims James, t.....	4 e Wharncliff..	350
j	507 Simpson John, o.....	18-19 s Blackfriars..	800
	572 Sullivan M, t.....	2 s Blackfriars..	325
j	443 Tremeer G T, o.....	7 s Leslie..	450
	458 Taylor Thomas, t.....	7 n Leslie..	300
j	466 Taylor Thomas, o.....	16 n Peters..	450
j	489 Thorp J W, t.....	pt 5-6 w Centre..	475
j	521 Tuckett T, t.....	pt 7 w Centre..	450

## LONDON WEST VOTERS' LIST.

No.	Name.	Situation.	Asses't.
j 385	Vanderlip Frederick, t	pt 2 w Centre	475
391	Whistler H O, t	pt 4 w Centre	300
j 396	Williams C N, o	B n Dundas	900
j 414	Wyrz Paul, t	pt B s	400
j 417	Wildern John, t	pt 4 s	600
461	Whately Edward, o	11 s Peter	300
482	Wals' John, o	pt 4 w Napier	250
509	Winter M, o	8 n Alexander	200
j 538	Wallace Peter, t	9, 10 e Albion	450
j 545	Ward Thomas, o	pt 1, 2 w	450
j 546	Ward John P, o	pt 2	450
548	Ward R, o	pt 5	300
549	Wark J, o	pt 5, 6	275
558	Weir R, o	4 e Wharnclyff	350
j 575	Woodward R, t	pt 1 s Blackfriars	500

## PART SECOND.

Persons entitled to vote at Municipal Elections only.

NONE.

## PART THIRD.

Persons entitled to vote at Elections to the Legislative Assembly only

NONE.



**POLLING SUB-DIVISION No. 3.**

Comprising that part of the Village lying south of Paul Street  
and west of the Wharnclyff Highway.

**PART FIRST.**

Persons entitled to vote at both Municipal Elections and Elections  
to the Legislative Assembly.

No.	Name.	Situation	Asses't.
209	Armitage S S, o.....	32 Charles & 13 n Walker..	200
j 230	Anderson George A, o.....	39, 40 s Charles..	600
245	Ackland John, o.....	67, 68, 69 n Charles..	400
j 288	Arbuckle William C, t.....	1 s Beech..	550
303	Allenby John B, t.....	6 n Beech..	275
j 311	Aschenbach F, t.....	2 s Maple..	1000
341	Ainsley Henry, o.....	8, 9, 10 s Walnut..	300
j 343	Ainsley Henry, o.....	13 s Walnut..	400
372	Arkell Robert, o.....	15, 16 & 38 s Walker..	3000
184	Brown Charles, t.....	5 s Paul..	300
270	Bowman John, o.....	pt 3 w Wharnclyff..	375
294	Bartram W H, o.....	7, 8, 9, 10, 11 s Beech..	1600
300	Barclay Alex, o.....	3 n Beech..	325
306	Bonsor John, o.....	9 pt 10 n Beech..	250
j 307	Bonsor George H, o.....	pt 10, 11 n Beech..	500
340	Brooks Leonard, o.....	7 s Walnut..	350
347	Board T, o.....	2, 3, 4 n Walnut..	300
370	Burgess R, o.....	13 s Wal'ber..	275
j 221	Clark Lewis, o.....	27 n Walker..	500
253	Clappeson Rev, o.....	19 s Walker..	300
270	Clark William, t.....	pt 3 w Wharnclyff..	375
j 279	Cione William J, t.....	10 w Wharnclyff..	500
310	Cooper William H, t.....	pt 1 s Maple..	375
j 331	Campbell D, t.....	13 s Walnut..	400
j 339	Clark George, o.....	6 s Walnut..	450
j 364	Crowther Joseph, t.....	8 s Walnut..	450
j 267	Daley Dennis, o.....	11, 14, 15, 16, 17 s Oak..	2000
j 323	Demery William, t.....	pt 3, 4 n Maple..	450
293	Ellis Patrick, o.....	5, 6 s Beech..	300
325	Evans John C C, o.....	pt 3, 4 n Maple..	450
327	Evans, J C C, o.....	7, 8 n Maple..	250
192	Fox Peter, t.....	18, 19 s Paul..	250
246	Fitzgerald W W, o.....	pt 17 w Wharnclyff..	1200
266	Forward C, o.....	10 s Oak..	350
336	Friendt F, t.....	3 s Walnut..	475
204	Glass A O, o.....	5, 6 w Wharnclyff..	200
244	Griffith William, o.....	65, 66 n Charles..	200
247	Glass William, o.....	pt 17 w Wharnclyff..	600
247	Glass Samuel, o.....	pt 17 w Wharnclyff..	600
264	Guiger Henry, o.....	3 s Oak..	350

Asses't.  
475

300  
900  
400  
600  
300  
250  
200  
450  
450  
450  
300  
275  
350  
500

only

No.	Name.	Situation.	Asses't.
303	Gerrard William, o.....	6 n Becch..	275
330	Gray George, c.....	12, 13, 14, 15 n Becch..	550
349	Gateciif Joseph, o.....	6 n Walnut...	350
260	Hutchison C, o.....	4, 12, 13, 18 s Oak..	525
310	Hodgins A, t.....	pt 1 s Maple..	375
311	Howard T, o.....	2 s Maple..	1000
312	Howard T, o.....	3, 4 s Maple..	200
321	Hopkins T, o.....	2 n Maple..	200
j 322	Hodgins M, o.....	pt 13 n Maple..	400
j 326	Hunter H, t.....	6 n Maple..	450
338	Haystead M, t.....	5 s Walnut..	350
344	Horsman John, o.....	14, 15 s Walnut..	500
j 345	Hammond R, o.....	pt 1 n Walnut..	300
356	Hadden R, o.....	A s Walker..	375
258	Johnson E F, o.....	3 s Oak..	225
272	Jones R A, o.....	4, 5 w Wharnciff..	700
287	Jones R A, o.....	C w Wharnciff..	250
185	Kelback Henry, t.....	6 s Paul..	300
j 206	Kirkpatrick Thomas, t.....	9, 10 w Wharnciff..	600
315	Kennedy Dennis, o.....	19 n Walker..	350
218	Kincaid John, o.....	22 n Walker, 41 and 42 s Charles..	375
j 269	Livingstone Dugald, o.....	2 w Wharnciff..	
188	Moran E, o.....	12, 13 s Paul..	300
249	Mountjoy Arscott, o.....	pt 17 s Walker..	200
j 250	Mountjoy Richard, o.....	pt 17 s Walker..	850
j 251	Mountjoy Arscott, o.....	pt 17 s Walker..	850
j 254	Murdock A R, o.....	30 to 35 s Walker..	2000
255	Murdock A R, o.....	36 to 49 s Hazel..	800
273	Morrison Thos, o.....	6 w Wharnciff..	200
j 276	Moorehead Alex, t.....	pt 8 w Wharnciff..	450
317	Mawhinney R, o.....	10, 11 s Maple..	200
j 325	Moore John, o.....	5 n Maple..	450
j 333	Marshall Thos, t.....	1 s Walnut..	550
j 334	Mercer James, t.....	2 s Walnut..	450
336	Morley C A, o.....	3 s Walnut..	475
j 346	Mackenzic M R, t.....	pt 1 n Walnut..	400
350	Morley C A, o.....	7, 8, 9, 10 n Walnut..	250
j 359	Morrison William, o.....	4 s Walker..	550
j 363	Moore George, t.....	pt 7, 8 s Walker..	450
236	McClelland Archibald, o.....	51 n Charles..	350
j 257	McBroom T, o.....	2 s Oak..	250
259	McBroom T, o.....	5 s Oak..	200

LONDON WEST VOTERS' LIST.

13

No.	Name.	Situation.	Asses't.
299	McCready Geo W, t.....	pt 2 n Beech..	375
329	McCoy George, o.....	10, 11 n Maple..	250
382	McBroom T, o.....	C D E 2 n Hickory..	250
j 289	Nicholls Joseph, t.....	pt 2 s Beech..	450
241	O'Rourke John, o.....	59 n Charles..	250
296	O'Mara John, o.....	13, 14, 15, 16 s Beech..	400
296	O'Mara M, o.....	13, 14, 15, 16 s Beech..	400
308	O'Callaghan T, o.....	12, 13 n Beech..	225
318	O'Callaghan F, o.....	12, 13 s Maple..	200
j 362	O'Mara Hugh, t.....	pt 7 s Walker..	450
375	O'Mara J, o.....	4, 5, 6, 7 s Hickory..	200
189	Parke & Purdom, o.....	14 s Paul..	250
190	Parke & Purdom, o.....	15 s Paul..	250
201	Peters Bros, o.....	pt 17 w Wharncloff..	4000
j 210	Parkins Joseph, t.....	14 n Walder..	450
265	Pecidel Samuel, o.....	9 s Oak ..	350
267	Phair Henry, o.....	1 w Wharncloff..	225
j 313	Pocock John J, o.....	5, 6, 7 s Maple..	550
j 314	Palmer R, o.....	8 s Maple..	600
j 324	Pudney R, t.....	pt 4 n Maple..	450
j 324	Pudney F J, o.....	pt 4 n Maple..	450
j 332	Pryce W, t.....	13 s Walnut..	400
j 332	Pring W, o.....	13 s Walnut..	400
205	Rathburn —, o.....	7, 8 w Wharncloff..	225
j 279	Rattary John, o.....	10 w Wharncloff..	500
305	Rutherford W T, o.....	8 n Beech..	200
342	Rutherford W T, o.....	11, 12 s Walnut..	200
j 352	Rockett R S, o.....	12 n Walnut..	450
367	Roberts F, o.....	pt 10, 11 s Walker..	250
381	Reidy John, o.....	22, 23, 24 s Elm..	200
381	Reidy Michael, o.....	22, 23, 24 s Elm..	200
j 202	Smith C B, o.....	1, 2, 3 w Wharncloff..	700
206	Small Thomas, o.....	9, 10 w Wharncloff..	600
208	Smith C B, o.....	36, 37 s Charles..	200
j 275	Stanton John S, o.....	pt 17 w Wharncloff..	475
276	Small Thomas, o.....	8 w Wharncloff..	450
288	Slater C B, o.....	1 s Beech..	500
289	Stockwell John, o.....	pt 2 s Beech..	450
j 290	Stockwell Caleb, t.....	pt 2 s Beech..	450
302	Stinchcombe R, o.....	5 n Beech..	350
366	Sarah John, o.....	10 s Walker..	460
j 368	Sutherland H, t.....	11 s Walker..	400

No.	Name.	Situation.	Assessm't.
j 214	Tozer Henry, t.....	18 n Walker..	475
j 235	Thompson Henry, o.....	50 n Charles..	400
256	Thompson R, o.....	1 s Oak..	260
292	Twichen John, o.....	4 s Beech..	375
309	Tanton John, o.....	14, 15, 16 n Beech .	300
319	Tanton John, t.....	14, 15 s Maple...	200
186	Westby Walter T, o.....	7, 8, 9 s Paul...	225
197	Welsh John, o.....	27, 28 s Parl..	270
210	Wood S H, o.....	14 n Walker..	450
212	Wood S H, o.....	16 n Walker..	550
213	Wade John H, o.....	17 n Walker..	325
219	Wilson James H, o.....	23, 25, 26, 43, 44, 45 Glass Survey..	750
240	Wheaton William, o.....	56, 57, 58 n Charles..	400
271	Walsh James, t.....	pt 3 w Wharncliff...	375
j 274	Wheeler H, t.....	pt 7 w " ..	500
j 277	Wallace Alex, t.....	pt 8 w " ..	450
280	Wyatt William, o.....	pt 11, 12 w " ..	300
281	" ..	" ..	300
282	" ..	" ..	300
283	" ..	" ..	375
284	" ..	" ..	375
297	William C N, o.....	pt 1 n Beech..	375
298	" ..	pt 1, 2 " ..	375
j 335	Webb John, t.....	2 s Walnut..	400
j 258	Walker John, o.....	2, 3 s Walker..	600
j 305	Wade John, o.....	9 " ..	450

---

PART SECOND.

Persons entitled to vote at Municipal Elections only.

NONE.

---

PART THIRD.

Persons entitled to vote at Elections to the Legislative Assembly only

NONE.

I, Thomas S. Minton, Clerk of the Municipality of London West, in the County of Middlesex, do hereby certify that parts one and three of the within list constitutes a correct list for the year 1883, of all persons appearing by the last revised Assessment Roll of the said Municipality to be entitled to vote at Elections for Members of the Legislative Assembly, and that parts one and two constitute a correct list for said year of all persons appearing by the said roll to be entitled to vote at Municipal Elections in the said Municipality, and I hereby call upon all Electors to examine the said List, and if any omissions or other errors are perceived therein, to take immediate proceedings to have the said errors corrected according to law.

Dated this 30th day of August, 1883.

T. S. MINTON,

Clerk of London West.

I hereby certify that the number of jurors is 230.

T. S. MINTON,

Clerk.

