

Technical and Bibliographic Notes / Notes techniques et bibliographiques

The Institute has attempted to obtain the best original copy available for filming. Features of this copy which may be bibliographically unique, which may alter any of the images in the reproduction, or which may significantly change the usual method of filming, are checked below.

L'Institut a microfilmé le meilleur exemplaire qu'il lui a été possible de se procurer. Les détails de cet exemplaire qui sont peut-être uniques du point de vue bibliographique, qui peuvent modifier une image reproduite, ou qui peuvent exiger une modification dans la méthode normale de filmage sont indiqués ci-dessous.

Coloured covers/  
Couverture de couleur

Covers damaged/  
Couverture endommagée

Covers restored and/or laminated/  
Couverture restaurée et/ou pelliculée

Cover title missing/  
Le titre de couverture manque

Coloured maps/  
Cartes géographiques en couleur

Coloured ink (i.e. other than blue or black)/  
Encre de couleur (i.e. autre que bleue ou noire)

Coloured plates and/or illustrations/  
Planches et/ou illustrations en couleur

Bound with other material/  
Relié avec d'autres documents

Tight binding may cause shadows or distortion along interior margin/  
La reliure serrée peut causer de l'ombre ou de la distorsion le long de la marge intérieure

Blank leaves added during restoration may appear within the text. Whenever possible, these have been omitted from filming/  
Il se peut que certaines pages blanches ajoutées lors d'une restauration apparaissent dans le texte, mais, lorsque cela était possible, ces pages n'ont pas été filmées.

Additional comments:/  
Commentaires supplémentaires:

Coloured pages/  
Pages de couleur

Pages damaged/  
Pages endommagées

Pages restored and/or laminated/  
Pages restaurées et/ou pelliculées

Pages discoloured, stained or foxed/  
Pages décolorées, tachetées ou piquées

Pages detached/  
Pages détachées

Showthrough/  
Transparence

Quality of print varies/  
Qualité inégale de l'impression

Continuous pagination/  
Pagination continue

Includes index(es)/  
Comprend un (des) index

Title on header taken from: /  
Le titre de l'en-tête provient:

Title page of issue/  
Page de titre de la livraison

Caption of issue/  
Titre de départ de la livraison

Masthead/  
Générique (périodiques) de la livraison

This item is filmed at the reduction ratio checked below/  
Ce document est filmé au taux de réduction indiqué ci-dessous.

10X	12X	14X	16X	18X	20X	22X	24X	26X	28X	30X	32X
									✓		

# BANK OF MONTREAL

ESTABLISHED 1817.

Capital all Paid-up - \$12,000,000  
 Reserve Fund - 6,000,000  
 Undivided Profits - 1,160,954.19

HEAD OFFICE, MONTREAL.

BOARD OF DIRECTORS.

Rt. Hon. Lord Southworth and Mount Royal, G.C.M.G., President.  
 Hon. G. A. Drummond, Vice-President.  
 A. T. Paterson, Esq., James Ross, Esq.  
 Sir William McDonald, H. B. Angus, Esq.  
 Edw. H. Greenfield, Esq., A. F. Gault, Esq.  
 H. G. Reid, Esq.  
 E. S. CLOUSTON, General Manager.

BRANCHES in all the principal cities and towns throughout the Dominion of Canada and in the following cities:  
 St. John's, Newfoundland London, Eng. 22 Abchurch Lane, E.C.  
 New York, 59 Wall St. Chicago, 185 La Salle Street.

BANKERS AND CORRESPONDENTS.

Liverpool—Bank of Liverpool  
 Scotland—British Linen Co. Bank and Branches.

WINNIPEG BRANCH

Travellers' Circular Letters of Credit and Commercial Credits issued for use in all parts of the world.  
 Collections made on favorable terms.  
 Interest allowed on deposits at current rates.  
 Drafts sold available at all points in Europe, United States and Canada, including Athin and Dawson City.

A. F. D. MACGACHEN, Manager

# DOMINION BANK

Capital (Paid up), \$1,500,000  
 Reserve Fund - \$1,500,000

Hon. Sir Frank Smith, Pres., E. B. Osler, Vice-Pres.

HEAD OFFICE, TORONTO

T. G. BROUGH, General Manager

WINNIPEG OFFICES:

Main Office: 150 Princess St.  
 F. L. PATTON, Manager.

North End Branch: 709 Main St.  
 S. L. JONES, Manager.

INTEREST ALLOWED ON DEPOSITS IN SAVINGS BANK DEPARTMENT.

# UNION BANK OF CANADA

CAPITAL PAID-UP - 2,000,000  
 REST - 450,000

HEAD OFFICE, QUEBEC.

BOARD OF DIRECTORS

Andrew Thomson, Esq., Pres. James King, M. P., Vice-Pres.  
 D. C. Thomson, Esq., E. J. Hale, Esq.  
 E. Giroux, Esq., Hon. John Sharpley

Win. Price, Esq.  
 E. E. Webb, General Manager. J. G. Billett, Inspector  
 F. W. S. Cross, Assistant Inspector

BRANCHES IN MANITOBA AND NORTH WEST TERRITORIES

WINNIPEG—THOS. McCAFFRY, Manager

GEORGE HOWLES, Assistant Manager

Rosevear, Man.	Deloraine, Man.	Moosomin, N.W.T.
Melita, Man.	Holland, Man.	Meoos Jaw, N.W.T.
Carberry, Man.	Lethbridge, N.W.T.	Neepawa, Man.
Carman, Man.	Morden, Man.	Verden, Man.
Minnedosa, Man.	Souris, Man.	Grinboro, Man.
Hamloia, Man.	Manitow, Man.	Wawanesa, Man.
Indian Head, Assa.	McLeod, Alberta	Gratina, Man.
Hartney, Man.	Calgary, N.W.T.	Ellihamey, Man.
Crystal City, Man.	Regina, N.W.T.	Pincher Creek

BRANCHES IN ONTARIO AND QUEBEC

Alexandria, Ont.	Norwood, Ont.	Smith Falls, Ont.
Hastings, Ont.	Ottawa, Ont.	Toronto, Ont.
Herrickville, Ont.	Quebec, Que.	Warrton, Ont.
Montreal, Que.	Shelburne, Ont.	Winchester, Ont.
	Carleton Place	

A General Banking Business Transacted.  
 Safe Deposit Boxes to Rent.

# Imperial Bank of Canada

HEAD OFFICE, TORONTO.

Capital Authorized - \$2,500,000  
 Capital Paid Up - \$2,391,863  
 Rest - \$1,554,710

D. R. Wilkie, General Manager. E. Hay, Inspector.

DIRECTORS:

H. S. Howland, President. T. R. Merritt, Vice-President.  
 Wm Ramsay, Robt. Jaffray.  
 T. Sutherland Stuymer, Elias Rogers. Wm. Hendrie.

BRANCHES IN THE NORTHWEST AND HERRIAN COLUMBIA.

Winnipeg, Man.	C. S. Hoare, Manager
Brandon, Man.	N. G. Leslie, "
Portage la Prairie, Man.	W. Bell, "
Calgary, Alta.	M. Morris, "
Prince Albert, Sask.	H. Davidson, "
Edmonton, Alta.	O. R. P. Kirkpatrick, Manager
Stratocou, Alta.	J. H. Wilson, Manager
Vancouver, B. C.	A. Jukes, Manager
Revelstoke, B. C.	A. R. H. Heard, Manager
Nelson, B. C.	J. M. Lay, Manager
Golden, B. C.	J. S. Gibb, "

BRANCHES ONTARIO AND QUEBEC.

Essex, Ont.	Port Colborne, Ont.
Galt, Ont.	Rat Portage, Ont.
Pergus, Ont.	St. Catharines, Ont.
Hamilton, Ont.	Sault Ste. Marie, Ont.
Ingersoll, Ont.	St. Thomas, Ont.
Listowel, Ont.	St. Thomas East End.
Niagara Falls, Ont.	Woodstock, Ont.
	Welland, Ont.

Toronto	Wellington and Leader Lane
"	Yonge and Queen
"	Yonge and Huron
"	King and York

Montreal, Que.

WINNIPEG BRANCH

SAVINGS BANK DEPARTMENT—Deposits of \$1 and upwards received and interest allowed.

DEBENTURES—Municipal and other Debentures purchased.

AGENTS IN GREAT BRITAIN—Lloyd's Bank Ltd., 71 Lombard St., London, with whom money may be deposited for transfer by letter or cable to any of the above branches.

DEPOSIT RECEIPTS issued negotiable without charge at any of the Hudson's Bay Co's Posts in Athabasca, Peace River and Mackenzie Districts.

DRAFTS SOLD, available at all points in Canada, United States and Europe.

LETTERS OF CREDIT issued, available in any part of the world

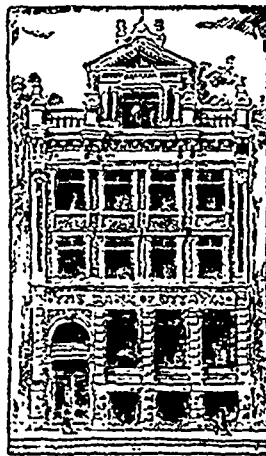
MONEY ORDERS issued payable at any Bank in Canada.  
 Rates—Under \$10, 8c; \$10 to \$20, 10c; \$20 to \$50, 12c; \$50 to \$100, 14c.

C. S. HOARE, Manager.

# BANK OF OTTAWA.

Head Office, Ottawa.

Capital paid up, \$1,731,080  
 Rest, \$1,403,310



Capital authorized, \$2,000,000  
 Capital subscribed, \$1,994,900

This Bank offers to clients every facility which their Balance, Business and responsibility warrant.

WINNIPEG BRANCH, - J. B. MONK, Manager

# The Canadian Bank of Commerce

CAPITAL

\$6,000,000

PAID-UP

HEAD OFFICE, TORONTO

Winnipeg Branch

transacts a general banking business

John Aird, Manager

# BANK OF BRITISH NORTH AMERICA

ESTABLISHED 1836.

INCORPORATED BY ROYAL CHARTER IN 1840.

Paid-up Capital - £1,000,000 Stg.  
 Reserve Fund - £325,000 "

HEAD OFFICE—3 Clements Lane, Lombard St., London.

COURT OF DIRECTORS—J. H. Brodie, John James Cater, Henry R. Ferrer, Gaspard Farrer, Richard H. Glyn, E. A. Hoare, H. J. Kendall, Frederic Lubbock, John Patton, Geo. D. Whatman, A. G. Wallis, Secretary.

Head Office in Canada—St. James St., Montreal.

H. Silkmann, General Manager.

J. Elmsly, Inspector.

BRANCHES IN CANADA.

PROVINCE OF ONTARIO:	PROVINCE OF NOVA SCOTIA:	PROVINCE OF MANITOBA:
London	Halifax	Winnipeg
Hamilton	Sydney, Cape Breton.	Brandon
Toronto		Barras Columbia
Midland		Ashcroft
Kingston	PROVINCE OF NEW BRUNSWICK:	Atlin
Ottawa	St. John	Bennett
	Fredericton	Victoria
PROVINCE OF QUEBEC:	Yukon District:	Vancouver
Montreal	Dawson City	Rosland
Quebec		Greenwood
		Keelo
		Trail (sub-agency)

AGENCIES IN THE UNITED STATES.

New York—2 Wall Street, W. Lawson and J. C. Welsh, Agts  
 San Francisco—170 Sansome St., H. M. J. McMichael and J. R. Ambrose, Agents.

Drafts on South Africa may be obtained at the Bank's Branches.

# THE WESTERN CO-OPERATIVE LOAN AND INVESTMENT CO.

INCORPORATED 1897

HEAD OFFICE, WINNIPEG, MAN.

Hon. D. H. McMillan, President.  
 Hy. Brynes, Vice-Pres. S. H. Wilks, Manager  
 G. W. Donald, Sec.-Treas.

ISSUES Prepaid Stock paying 6 per cent per annum. Fully paid stock paying 7 per cent per annum. Instalment Stock maturing in \$, 10 and 12 years.

LOANS made re-payable in monthly, quarterly half yearly or yearly instalments

Place "For Sale" or "want" advts. in The Commercial. It reaches nearly all business people between Lake Superior and the Pacific Coast.

# BANK OF NOVA SCOTIA.

INCORPORATED 1837.

JOHN Y. PAYZANT, PRESIDENT.

H. C. McLEOD, GENERAL MANAGER.

CAPITAL PAID UP, - \$1,768,000.00.

RESERVE, - \$2,201,656.57.

COMPARATIVE STATEMENT, 1890--1900.

ASSETS.	Jan. 1st, 1890.		Jan. 1st, 1900.		LIABILITIES.	Jan. 1st, 1890.		Jan. 1st, 1900.	
	\$		\$			\$		\$	
Quick Assets .....	\$ 2,432,135.38		\$ 8,274,162.14		Capital paid in .....	\$ 1,114,300.00		\$ 1,760,900.00	
Loans and bills discounted.	5,903,094.20		11,270,924.09		Reserve undivided profits..	572,973.81		2,193,136.57	
Other assets .....	44,956.41		74,669.61		Notes in circulation .....	1,325,270.68		1,670,368.50	
Bank premises .....	94,975.77		18,640.59		Other liabilities .....	194,238.36		198,632.96	
	\$ 8,475,161.76		\$ 19,638,396.43		Deposits .....	5,268,378.91		13,815,358.40	
						\$ 8,475,161.76		\$ 19,638,396.43	

† Nominal value.

Winnipeg Branch: C. A. HENNEDEY, Manager

**BANK OF HAMILTON**

Head Office, Hamilton.

**Capital** (all paid-up) ..\$1,500,000  
**Reserve Fund** ..... 1,000,000

**Board of Directors**

John Stuart, President. A. G. Ramsay, Vice President.  
 John Proctor George Roach A. T. Wood, M.P.  
 A. H. Lee (Toronto) Wm. Gillson, M.P.  
 J. Turnbull, Cashier. H. S. Steven, Asst. Cashier.

Agencies throughout Ontario and at the following points in Manitoba and the West: Brandon, Carman, Hamiota, Manitou, Morden, Plum Coulee, Winkler, Winnipeg and Vancouver, B.C.  
 Deposits received and interest allowed.  
 General Banking Business transacted  
 Collections carefully and promptly effected at all points in Canada.  
 Savings lists at all Offices.  
 Correspondence solicited.  
 WINNIPEG BRANCH, Opposite Post Office.  
 C. BARTLETT, Agent.

**The Western Loan & Trust Co.**

LIMITED

Incorporated by Special Act of the Legislature.

Office Company's Building, No. 9 St. Sacrament St., Montreal, Que.

**DIRECTORS :**

Hon. A. W. Ogilvie W. H. Comstock, Esq.  
 W. Barclay Stephens, Esq. R. Prefontaine, Esq., M.P.  
 H. W. Knight, Esq. John Hoodless, Esq.  
 J. N. Greenhalgh, Esq., Q.C. W. L. Hogg, Esq.

**OFFICERS**

Hon. A. W. Ogilvie, Pres. R. Prefontaine, Esq., M.P., Vice-Pres.  
 J. W. Michaud, Esq., Asst. Mgr. W. Barclay Stephens, Esq., Mgr.  
 Solicitors—Messrs. Greenhalghs & Greenhalghs.  
 Bankers—The Imperial Bank of Canada.

This Company acts as assignee, administrator, executor, trustee, receiver, committee of lunatic, guardian liquidator, etc etc., also as agent of the above offices.  
 Debentures issued for three or five years, both debentures and interest on the same can be collected in any part of Canada without charge.

For further particulars address the manager  
**CROTTY & CROSS, AGENTS, WINNIPEG**

**JOHN W. PECK & CO.**  
 MONTREAL WINNIPEG  
 VANCOUVER

Manufacturers of



**CLOTHING  
 FURS  
 SHIRTS**

— Dealers in —

**MEN'S FURNISHINGS  
 HATS, CAPS.**

**AT THE FRONT**

We are leading with our new samples of

**FINE CLOTHING** For Fall and Winter of 1900

It will pay you to wait and see our travellers and samples before buying.

**DONALD FRASER & CO.**

Manufacturers of Fine Clothing  
 WHOLESALE

502 St. Paul St., Montreal.

126 Princess St., Winnipeg.

"KNOWLEDGE IS POWER."

**The Stuart-Arbuthnot Machinery Co. Ltd.**

(SUCCESSORS TO STUART & HARPER)

Are now located in their new offices and warerooms

**764-766 Main St.  
 Winnipeg**

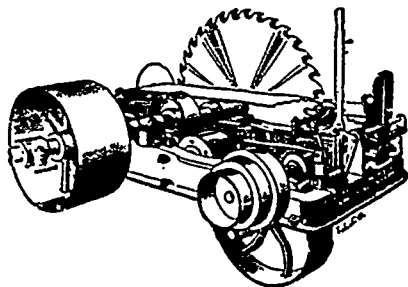
ONE DOOR NORTH OF  
 THE OLD STAND - -

Call, ring up, or write them, for prices and information required on Engines, Boilers, Pumps, Flour and Saw Mill Machinery, Motors and Electrical Supplies of all kinds.

Phone 324

Established 1879

P. O. Box 693



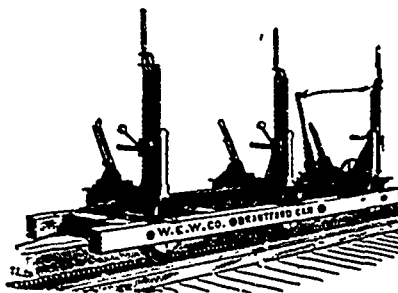
**ENGINES AND BOILERS**

**Waterous Engine Works Co**

WINNIPEG, MAN. AND VANCOUVER, B.C.

**SAW MILL MACHINERY**

Shingle Mills and Planers  
 Edgers and Trimmers



**Spring Goods**

We have a complete line of

**Express Wagons, Tops, Marbles**

We shall soon be able to ship Ink, of which we carry the following lines:

Stephens' Paul's Underwood's  
 and Devan's

Your Orders Solicited.

**Clark Bros. & Co.**

173 McDermott Ave.

P. O. Box 1240.

WINNIPEG, MAN

**MONEY MAKERS**

AND READY TAKERS

**Rocky Mountain Spruce**

For Coughs and Colds.

**Clark's White Liniment**

For Man and Beast.

**Dandelion Bitters**

The tonic mixture that makes Rich Red Blood.

**The Martin, Bole & Wynne Co.**

MANUFACTURING CHEMISTS

WINNIPEG

**R. A. LISTER & CO. Ltd.**

232 King St., Winnipeg

Offer to the trade at right discount their

**'Alexandra' and 'Melotte' Cream Separators**

which are unequalled for large or small dairies, also

- Barrel Churns
- Butter Prints
- Butter Workers
- Thermometers
- Butter Boxes
- Parchment Paper
- Cheese Box Material
- Cheese Rennet
- Colouring
- Bandage
- Dairy Brushes
- Egg Cases

Correspondence solicited in English, French, German, Icelandic and Scandinavian.

# THE COMMERCIAL

The recognized authority on all matters pertaining to trade and progress in Western Canada, including that portion of Ontario west of Lake Superior, the Provinces of Manitoba and British Columbia and the Territories.

**Eighteenth Year of Publication**  
ISSUED EVERY SATURDAY

SUBSCRIPTIONS, CANADA AND UNITED STATES  
\$2.00 PER ANNUM IN ADVANCE OR \$2.25 WHEN  
NOT SO PAID; OTHER COUNTRIES, \$3.50 PER  
ANNUM IN ADVANCE.

Changes for advertisements or stops should be in  
not later than Thursday Morning.

Advertisements purporting to be news matter,  
or which profess to express the opinions of this  
journal, will not be inserted.

Office: 131 McDermot Street.

D. W. BUCHANAN,  
Publisher.

The Commercial certainly enjoys a very much larger circulation among the business community of the vast region lying between Lake Superior and the Pacific Coast than any other paper in Canada, daily or weekly. The Commercial also reaches the leading wholesale, commission, manufacturing and financial houses of Eastern Canada.

WINNIPEG, MAR. 31, 1900.

## THE BUDGET.

The most remarkable feature of Mr. Fielding's budget speech is of course the announcement of a further increase in the British preferential tariff, from 25 to 33 1-3 per cent. This announcement will take the country by surprise, without doubt. The British preferential tariff, when first announced was received with favor by a large section of the people, and the government has evidently concluded that a further extension of that principle will be received with like favor. In these days of growing imperial sentiment, it will be remarkable if this move of the Canadian government is not taken as another effort in the direction of encouraging an imperial Zollverein, or imperial trade compact of some nature. A section of the Canadian people are opposed to the granting of a preference to Great Britain, unless on the basis of a reciprocity of preferences. Free trade Britain, however, has really no preference to offer. We already have her open market for our products. In order to give us a preference, she would have first to proceed to levy a tariff tax on products from other countries. Virtually she would have to revolutionize her entire fiscal policy, something which even the enthusiastic imperial sentiment of the period will hardly lead her to consider.

The increase of the British preferential tariff to 33 1-3 per cent, which is to go into effect on July 1 next, means a very important reduction of the duty on imports from Great Britain. It means that where three dollars would be collected in duty on imports from other countries, only \$2 will be collected on British goods. With such a large portion of our total imports coming from Great Britain, this increase in the preferential tariff really means an im-

portant reduction in our customs tariff. To this extent it should be received with favor by those in favor of less tariff taxation. The result will no doubt be to increase imports from the mother country, where the bulk of our exports go, so that the preference is given to our best customer at the same time that our tariff is reduced.

The real practical feature of this increase in the preferential tariff, to the people of Canada, is the fact that it provides for a reduction of tariff taxation—it is a further relaxation of the high tariff policy. This, we say, is the practical feature of the extension of the preferential tariff principle. The question also has its sentimental side, which, however, does not detract from its practical value as a measure of tariff reform. The fact that Great Britain, who is our best customer, will be the principal, or rather the sole gainer by this decrease of our tariff, will certainly not be taken amiss by the Canadian people.

It will be interesting to note how this further extension of the British preferential feature of our tariff will be taken in the United States. It is not our fault, however, if any interest in the United States should feel aggrieved at this recent development of our tariff policy. We have for long years sought in vain for freer commercial relations with the United States, but our every effort in this direction has been coldly repelled.

Mr Fielding's statements regarding revenue, expenditure, etc., show a large increase, as was expected. The prosperity enjoyed by the Dominion is shown in the increase of revenue from \$40,555,000 in 1898 to \$46,741,000 in 1899, making a net increase of \$6,186,000, and providing a surplus, over expenditure, of well up to five million dollars. Over \$9,000,000, however, was expended on capital account, which is not charged against revenue.

## Labor Legislation.

A delegation from the Winnipeg Trade and Labor Council and the labor party waited upon Premier Macdonald and members of the provincial cabinet last week to urge the passage of an act regulating factories and workshops within the province and providing for the establishment of a labor employment bureau. The delegation asked that legislation be introduced providing for the safety of workshop and factory hands from accident as nearly as this could be secured, proper sanitation, abolition of child labor, for children under 14 years of age; inspection of factories and workshops and other reforms. The proposed labor bureau would do away to a large extent with the employment agency business as carried on at present and would be entirely under government control. The premier promised to give both matters full consideration and to do what he could to have existing abuses remedied.

## Ogilvie Milling Co. Re-Organization.

The Ogilvie milling interests in Canada are to be consolidated under the name The W. W. Ogilvie Milling Company, Limited, and the headquarters are hereafter to be at Winnipeg. F. W. Thompson, manager of the western business heretofore, is to be general manager of the entire business. Montreal and other eastern interests will be controlled by a local board of directors.

## Freight Rates.

Tramp steamers will be scarce on Canadian Atlantic routes this season and shippers who have availed themselves of these in the past for getting their commodities to market will be considerably put about to secure shipping space. As high as 52s 6d has been offered for lumber space from Canada to points in the United Kingdom.

Ocean grain freight rates are high as is shown by the following scale of prices which was quoted last week at Montreal: Liverpool, 2s 3d; London, 2s 9d asked, 2s 6d bid; Glasgow, 2s 11-2d to 2s 6d; Avonmouth, 2s 9d; Manchester, 2s 3d; Hamburg, 2s 9d; Antwerp, 2s 6d; Leith, 3s to 3s 3d; Dublin, 2s 9d; Belfast, 2s 6d; Aberdeen, 3s 3d; and Cardiff, 2s 6d.

The Montreal Trade Bulletin says. "There has been further freight engagements of grain from Duluth, Fort William and Chicago to Montreal at 63-4c to 7c per bushel from Fort William and Duluth, and at 61-2c from Chicago."

## Railway Matters.

W. F. Tye, of the Canadian Pacific Railway engineering department, has returned from a trip of inspection over the line to Fort William. Surveys are now being run over this line, preparatory to the laying of the double track. The company will have construction gangs at work on the Pipestone extension, the Lac du Bonnet line, and the MacGregor extension as soon as the frost is out of the ground. Work on these branches was started last year.

## Dairy Trade Notes.

The creamery at Moose Jaw, Assiniboia, will open for the season on April 1.

Cheese factories in the Belleville district, Ontario, expect to resume operations about April 1.

Preparations are being made to open Thelmet's and Neault's cheese factories at Ste. Rose du Lac, Manitoba, the coming season. The factories will consume the product of between four and five hundred cows.

The remarkable advance in the price of butter at Montreal and other eastern centres which took place about three weeks ago is still exciting interest. Prices advanced about 10c over the ordinary level, creamery changing hands at as much as 73c per pound. Butter which had been shipped to England was brought back and sold at a profit. Good butter has been very scarce since the opening of the year. Fresh stock is now coming in more freely and the situation is much easier.

John McKechnie, of the Vulcan Iron Works, Winnipeg, has returned from the east. Mr. McKechnie was in the railway accident near Toronto a short time ago, but his friends will be glad to learn that he has about recovered from the injuries received.

# THEY GO TOGETHER



## AMES HOLDEN SHOES GRANBY RUBBERS

Our Travellers are now on the road with Fall Samples of **BOOTS and SHOES**, also **GRANBY OVERSHOES** and **GUM GOODS**. Full stock carried in Winnipeg of Boots and Shoes and Granby Rubbers. Mail Orders solicited.

### The Ames Holden Co. of Montreal Limited

A. L. JOHNSON, Manager Winnipeg Branch.

Buy Granby and get the best without costing more than any other make.

## W. H. MALKIN & Co.

Importers and Wholesale Grocers

Special Lines.

California Evaporated Fruits,  
Japan Rice China Rice  
Sago Tapioca  
Crosse & Blackwell's Jams, Pickles, etc.  
Leo & Perrins' Sauce  
Australian Canned Meats

### GREEN FRUITS

Full line of General Groceries, Tea, Coffees, Etc.

371 Water St. VANCOUVER, B. C.

## Reasons

FOR SENDING YOUR

**BUTTER, EGGS, PORK, Etc.**

- TO THE -

## DOMINION PRODUCE CO.

184 James St., Winnipeg

We have a first-rate connection of long standing amongst the buyers. We are in a position to get Top Prices.

We will give you prompt returns and render account sales weekly.

We will buy for you any line of goods you require, if we do not carry them.

We can handle chop, oats and barley in carlots to very good advantage.

P. O. BOX 892.

## IMPORT FANCY GOODS

OUR Mr. W. E. DAVIDSON is now on his way East from the Coast, and the assortment of **IMPORT FANCY GOODS** he is showing will certainly interest all up-to-date buyers.

In addition to Import Goods he is carrying a complete line of **SPORTING GOODS** and other salable lines for summer trade.

Write for spring catalogue.

**NERLICH & CO.** 35 Front St. Toronto



THE THOMSON MARBLE AND GRANITE WORKS

James Thomson & Co.

—DEALERS IN—

## MARBLE & GRANITE MONUMENTS

Headstones, Marble Pieces, Tablets, Cemetery Fencing, Etc.

Between Rosser and Princess Avenues  
Nearly Opposite Palace Hotel,  
BRANDON, MAN.

Represented by E. A. Alson and John Drysdale

# RAW FURS

HIDES AND DEER SKINS

SHIP TO

## McMILLAN FUR & WOOL CO.

EXPORTERS AND IMPORTERS.

200-212 FIRST AVE. NORTH, MINNEAPOLIS, MINN.

Write for Our Circular and See the Prices We Pay.

# THE LIVELY METROPOLIS OF ALBERTA

As Seen by a Commercial Representative.

The city of Calgary, which has a population from 4,000 to 5,000, lies at the confluence of the Bow and Elbow rivers, with the Rocky Mountains as a background, and is manifestly of a different type to our ordinary western town. This is apparent at

most part handle but one line of goods. As a distributing point Calgary's situation is similar to that of Winnipeg. Being located on the main line of the C. P. R. it has, of course, shipping facilities east and west, then branch lines commencing here run north to Edmonton,

and dressed meats. Ample banking facilities are also at hand, the banks represented being the Imperial, Molsons, Bank of Montreal and Union Bank of Canada. It has electric light, telephone and water works systems and arrangements are now being made with a view to the purchase of the water works system by the city council. There are many substantial local industries amongst which might be mentioned the creamery, C. P. R. shops, the flour mill, stone quarries, brick yards, brewery, abattoirs, sawmills, planing mills, also a dally and a semi-weekly newspaper. Hull & Co. are large cattle and meat shippers. They have an abattoir and pork packing factory here and have several retail



Calgary, Alberta.

Photo by Steele & Co., Winnipeg and Calgary.

the first glance along the main business street, which is lined on both sides by large stone blocks, which for beauty and size would be hard to surpass even in much larger and older places. This applies particularly to the Alexander corner, the Clarence block, the post office, court house,

190 miles, and south to Macleod, 107 miles, where connection is made with the Crow's Nest Pass railway, tapping the southern portion of British Columbia. This fact has not been lost sight of and we find several wholesale establishments here. G. F. & J. Galt, Lucas, Steele & Bristol, and Col.

branches in British Columbia. The flour mill, operated by the Calgary Milling Co., has a capacity of 170 barrels per day, with a grain elevator having storage room for 60,000 bushels. This company does a large shipping business to points north and south as well as to British Columbia points.



Bow River, Calgary.

Photo by Steele & Co., Winnipeg and Calgary.

Bank of Montreal building, the Hudson's Bay stores, Thompson block, the Alberta Hotel, Loughheed block, etc. A difference is also noticeable in the stores, as instead of large general or departmental stores which one would expect to find, the merchants for the

ville & Co., wholesale grocers; J. Y. Griffin & Co., pork packers, and the Anderson Produce Co. have branches, while several firms make this their headquarters, amongst them being Hull Bros. & Co. and P. Burns & Co., who do a large shipping business in cattle

P. Burns & Co.'s abattoir, which is situated about two miles out of town, is one of the largest in Canada, employing from 40 to 50 men. The boiler house and rendering tank is 50x70 feet and the cold storage buildings 300x50 feet and 80x50 feet, giving a

**JAS. McCREADY & CO.**

WHOLESALE

\* **Boot and Shoe  
Manufacturers**

MONTREAL, QUEBEC

W. WILLIAMS, Agent.

**LEITCH BROS.**

**Oak Lake**

"Anchor  
Brand" **Flours**

FROM NO. 1 HARD WHEAT.

Bran, Shorts and all kinds of  
Chopped Feed and Grain.

ADDRESS

**OAK LAKE, MAN.**

**Mills & Hicks**

Importers of and Wholesale  
Dealers in

**Teas, Roasted and Ground Coffees  
Jams Etc.**

Packers of Britannia, Heaver and Buffalo Blend  
of Packet Teas and Sole Agents for Thos.  
Lipton's Package Teas for Manitoba, N. W.  
Territories and British Columbia.

**244 Princess St., Winnipeg**

TO THE TRADE

FOR GOOD, RELIABLE  
SEEDS, ORDER FROM

**J. M. PERKINS**  
SEEDSMAN

Largest Stock west of Toronto. Send for whole-  
sale catalogue. Commission boxes supplied.

MARKET SQUARE, WINNIPEG.

**W. R. JOHNSTON & Co.**

(Late Livingston, Johnston & Co.)

Wholesale Manufacturers  
READY MADE

**CLOTHING**

Corner Bay and Front Streets, Toronto

Western Representatives: A. W. Fisher W.  
W. ARMSTRONG.

**Jubilee Brand  
Condensed Milk**

TRY IT IN YOUR COFFEE

Better than fresh Milk and equal to Cream  
A boon to the Miner and Camper

**THE MANITOBA DAIRY COMPANY LIMITED.**

HEAD OFFICE:  
WINNIPEG.

FACTORY:  
LA ROCHELLE, MAN.

**SCRAP IRON WANTED**

We will pay \$14 per ton for No. 1 Cast Iron Scrap and \$5 per ton for Stove  
Plate delivered at our works. Highest prices paid for Scrap Brass, Copper

**VULCAN IRON CO., WINNIPEG**

**FOR LENT**

We have a fine lot of fresh sea and fresh water fish, including Smelts in  
24 lb boxes; Cod, Haddock, Mackerel, Shark, Sea Bass, Eels, Tommycods, Her-  
rings, Flounders, Whitefish and many other varieties. Also choice brands of  
Oysters, Finnan Haddles and salt fish. Order your fish from us and get the  
best.

**W. J. GUEST, Wholesale Fish, Oysters,  
Game, Poultry, Etc. WINNIPEG.**

**DICK,  
BANNING  
& CO'Y**

WINNIPEG

Are you in need of

1 1-2 inch **Lumber**  
W. P. Select

**Enormously**

The largest sales of any factory in  
Western Canada. The popular Cigars:

Flor-de Tom Lee Rosa Linda  
The Gordon The T.L.

Are you getting your share?

**WESTERN CIGAR FACTORY**  
THOS. LEE, Prop.

J. D. Lalonde

O. Milord

**LALONDE & MILORD**

Manufacturers of

SHOW CASES, STORE FITTINGS  
SASH, DOORS, ETC.

Cor. King and Sutherland Streets  
**WINNIPEG.**

Write for  
Illustrated Catalogue  
Describing

**FROST  
FENCE  
AND  
GATES**

Agents wanted in unoccupied terri-  
tory. Can deliver goods f. o. b.  
Winnipeg.

**The Frost Wire Fence Co.**

WELLAND, ONT.

Please Mention.

When writing to advertisers, please  
mention that you saw their advertisement  
in the Commercial.

storage capacity for 4,000 head of cattle. They have branches all over British Columbia and at Atlin and Skagway, and during the shipping season turn out weekly seven carloads of dressed meats, in addition to handling a large number of live cattle.

W. H. Cushing has a large wash and door factory, planing mill and lumber yards here, employing 25 men.

D. Gunn is also starting a wash and door factory. Quite close to town there is an almost inexhaustible supply of gray sandstone, of which the majority of the business blocks here are constructed. This is a very handsome building stone and is used extensively as a trimming to brick blocks. The C. P. R. shops and yards which were finished a year ago are the largest between Winnipeg and the coast. They include a twelve-stall roundhouse and locomotive and car repair shops and give employment to a large number of men. This is also an important divisional point, so that the monthly pay roll totals to a large sum. The Hudson's Bay Co.'s store

stoves, etc. Mr. Comer is well known here, having been associated with the Calgary Hardware Co., for many years. Robinson & Co. have bought out the dry goods business of A. Allan and Co. J. Mitchell is new in the boot and shoemaker's business, and J. Diamond in clothing and men's furnishings. The Great West Saddlery Co. have taken over the stores of Hutchings & Riley and Carson & Shore, and are now occupying a three story stone block erected last year by Senator Longheed, costing \$8,000. The branch warehouses of Codville & Co. and the Anderson Produce Co., were established here since our last visit of a year ago. Hull Bros. & Co. have built a three story solid stone block. The ground floor will be used for stores, the upper flats being divided into offices, etc. An addition, costing about \$25,000, was added to the Calgary Milling & Brewing Company's plant, and a grain elevator erected by them. The premises occupied by the Union Bank were built last year by Senator Longheed. W. R. Campbell built a brick block, which

use only the best class of males, in order that Canada take the place she should with her meats, dairy produce and poultry in the markets of the world. Only meats of a superior quality find a ready and profitable market at home or abroad. It takes as long, generally longer, to produce an animal which is worth from 2c to 3c per lb. as one worth from 4c to 6c per lb., and costs almost as much for feed and attention.

The loss resulting from inferior stock bears heavily on the dairy interests. There are hundreds of cows throughout Canada which produce annually not more than 2,400 lbs. of 3 per cent. milk, there are others well bred and well fed which easily produce from 6,000 to 10,000 lbs. annually of 4 per cent. milk. There are even a few grand cows which have at public test yielded at the rate of over 20 lbs. of butter per week. The annual loss to Canada from keeping poor stock and keeping it badly is enormous. Our motto should be: "The greatest quantity of the best quality, produced most cheaply." This can only be fulfilled by using well bred sires of good quality, and by feeding the dams and offspring liberally.



Bank of Montreal, Calgary.

here is one of the largest branches. It is in a large and handsome two story stone building, with a frontage on the main street of 100 feet. They occupy the whole building, and have a staff of about thirty-two regularly employed.

J. Sharpies carries a stock of general merchandise and does a shipping business in all kinds of grain and farm produce to the Kootenays and coast points.

The headquarters of the Dominion government creamery system of Alberta; and the Central Cold storage warehouse in connection therewith is located here.

The Northwest Mounted Police barracks are located at the east end and comprise a large group of buildings, surrounded by pretty and well kept grounds.

There are two hospitals, the Calgary general and Roman Catholic hospitals. Some additions and improvements were made to the general hospital last year. Several new businesses have been started, and some changes in ownership occurred during the last year, also some business blocks and a large number of dwellings erected. C. F. Comer & Co., opened a hardware store on the 1st of January. They have chosen a centrally located stand, and carry a full line of hardware,

he will occupy shortly with a stock of goods. H. A. Perley, of the Alberta hotel, has built a large two story brick building at the rear of the hotel, the ground floor of which is used as sample rooms, with sleeping accommodations overhead. Calgary is surrounded by a vast stretch of ranching and grazing country, extending eastward from the Rocky Mountains some 500 miles and northward from the international boundary about 200 miles, and it is also in close touch with the large tract of mixed farming lands tapped by the Calgary and Edmonton line. Thousands of cattle are annually shipped from this point to East and West Kootenay and Pacific Coast points and also to the old country and a large export business is done in horses, sheep, hogs, grain, mill stuffs and all kinds of farm produce as well. Large deposits of coal have been discovered at different points throughout this region and natural gas and coal oil are also known to exist in several localities and as these become developed and the ranching industry increases Calgary will doubtless grow with them.

#### Raise Good Stock.

F. W. Hodson, Dominion live stock commissioner, says: The rank and file of our farmers must be induced to

#### Brome Grass.

One of the great benefits conferred upon the country through the work of the experimental farms is found in the cultivation of brome grass in Manitoba. This grass was introduced and recommended by the experimental farms, and it has practically solved the problem of finding a cultivated hay feeder crop suitable for this region. Brome grass has proved itself to be thoroughly adapted to our western prairie country, yielding a safe and large crop of choice hay.

A new industry has already arisen as a result of the successful growing of this grass here. A large demand has sprung up for brome grass seed, not only for home use, but for shipment to the States to the south of us, where the fame of this grass has become known. J. M. Perkins, seed dealer, of Winnipeg, and A. E. McKenzie & Co., of Brandon, have each received orders for some large lots of this grass seed from points south of the boundary. Farmers who have grown the seed for sale are finding it a very profitable crop, and growing this crop for the seed is likely to become quite an industry here.

#### How to Dress Calves.

Calves from three to six weeks old, and weighing about 100 pounds, or say from 80 to 120 pounds, are the most desirable weight for shipment says the Chicago Trade Bulletin. The head should be cut out, so as to leave the hide of the head on the skin. The legs should be cut off at the knee joint. The entrails should all be removed, excepting the kidneys and liver, which should not be taken out. Cut the carcass open from the neck through the entire length—from head to bungut. If this is done they are not so apt to sour and spoil during hot weather. Many a fine carcass has spoiled in hot weather because of its not being cut open. Don't wash the carcass out with water, but wipe out with a dry cloth. Don't ship until the animal heat is entirely out of the body, and never tie the carcass up in a bag, as this keeps air from circulating and makes the meat more liable to become tainted.





# His Work Is Easy

—SELLING—

## REINDEER BRAND CONDENSED MILK EVAPORATED CREAM

STANDARD GOODS

For sale by all Wholesale Grocers.

E. NICHOLSON, WHOLESALE AGENT 115 BANNATYNE ST. E., WINNIPEG

## Educate Your Customers

IT will pay you  
will pay your customers  
will increase your business

## Benson's Prepared Corn

IS PURE.

40 Years on the Canadian Market.

For sale by all Winnipeg Wholesale Grocers.

E. Nicholson, 115 Bannatyne St., E. Winnipeg  
WHOLESALE AGENT.

## Home Reputation...

No Manufacturer or Dealer anywhere can give you under any brand, at any price, **ROLLED OATS** as pure or as clean as



DOW &  
CURRY'S  
JUBILEE  
BRAND  
ROLLED  
OATS

Ask for Prices on car lots delivered at your station.

E. Nicholson, 115 Bannatyne St. E., Winnipeg  
WHOLESALE AGENT.

**Electricity Building.**

Elaborate designs have recently been completed for the Electricity building for the Pan-American Exposition, to be held at Buffalo, N. Y., May 1st to October 31st, 1901. Displays of all kinds in the practical and artistic uses of electricity, together with complete exhibits of electrical machinery and appliances are to be conspicuous features of the great exposition.

The designs contemplate a very handsome and commodious building. The structure is to be 500 feet from east to west and 150 feet wide, giving an exhibition space of 75,000 square feet.

The south facade fronts the Mall and the north fronts the Midway. The east end is toward the massive Electric Tower, while the west end faces the Grand Canal. The building is long, low and inviting. The design of the facades shows artistic grouping. The

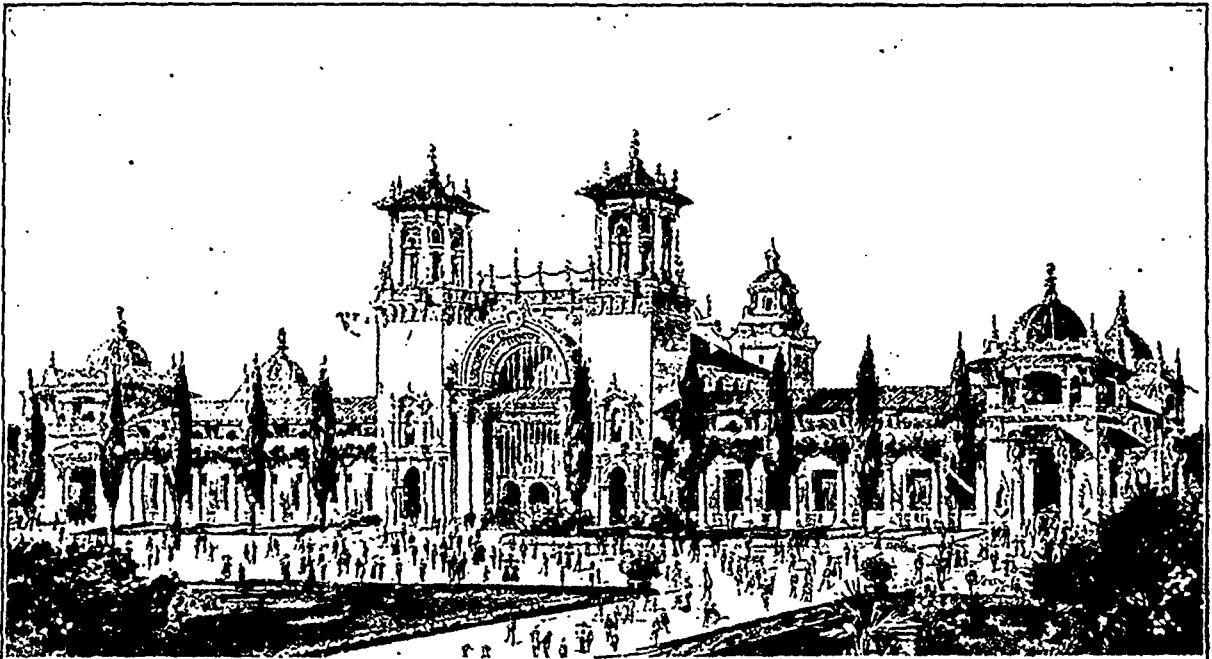
ing is of choicest design. The general ornamentation of the building is to be frescoes in an interesting mixture of reds, greens and yellows. The general color scheme follows that of the Machinery and Transportation Building and other groups of buildings of the exposition. The building was designed by Green & Wicks, of Buffalo.

**Canadian Steel Company.**

New York, March 28.—A meeting of the organizers of the Canadian Steel company, the incorporation of which, with \$18,000,000 capital, \$3,000,000 preferred, is now pending in the Ontario legislature, was held in this city this week, says the Journal of Commerce. At this meeting the details of the organization were agreed upon, although the formal organization cannot be effected until the charter has been actually issued, which it

**A Lesson in Economics.**

When a bonus is given to any industry it must be taken off other industries. The effect may be concealed, but it is none the less certain. The people have that much less to spend in the stores, to patronize other industries, to employ labor or to promote enterprises. In the aggregate the injury much reach the full amount of the bonus paid. The industry receiving the bonus either needs or does not need it. If it needs the bonus, that is proof that it can be conducted only at a loss. The products of an industry needing a bonus must be less than the outlay in labor, capital and machinery. The bonus or subsidy does not alter this condition, but transfers the loss from the owners of the industry bonus-ed to those who pay the bonus. The industry is conducted at a loss, but the other industries are forced to suffer it. If an industry is self-supporting,



ELECTRICITY BUILDING  
PAN-AMERICAN EXPOSITION  
GREEN & WICKS ARCHT-S- BUFFALO, NY

Copyright 1900  
By Pan-American Exposition Co.

openings of the pergola-like loggias, placed at frequent intervals, present a delightful effect, showing more and more of the reveals of the pilasters and openings as the eye travels to the end of the building farthest away from the observer.

There is a pleasing ending at each corner of the building, with a low-domed pavilion tower, and the building is interrupted at the center by the double-towered entrance. This entrance, wide and high, is spanned by an ornamental arch and supported each side by columns. The towers also have minor entrances through them.

The connecting work between the towers, the towers themselves, the pavilions at the corners of the buildings, and similar places, are to be brilliantly illuminated and made gay with banners and flags.

The modeled relief work of the build-

ing is expected will be done about the 20th of next month.

The plant of the company will be at Welland, Ontario, where a 1,500 acre site has been obtained. This is at the mouth of the Welland canal, where it is said Lake Superior ores can be laid down as cheap as at Cleveland or Buffalo. The company proposes to cover into practically all departments of the iron and steel business. Among those interested are several capitalists from this and other cities of the United States, while Canadian capital is also concerned.

A feature of the company's charter is that it will permit the company to make contracts for electric power with the Hamilton and Lake Erie Power company specifically, or with other companies. It is claimed that power can be furnished in this way at about one-fifth the cost of steam power in Pittsburg.

if its products are greater than its outlays, it does not need a bonus. A gift received comes off other industries, but is the result of misrepresentations. —Globe.

It is given out that the estate of the late Geo. E. Tuckett, of Hamilton, is worth between \$600,000 and \$800,000.

The Vancouver board of trade has endorsed the proposition to have a British Columbia building erected at the Winnipeg Industrial exhibition grounds, the building to be entirely of British Columbia lumber, and filled with British Columbia exhibits. It is understood the Dominion government will assist financially in the matter, and the Canadian Pacific Railway will carry material for the building free of cost.

**Stephens**

Made with Manitoba Boiled Linseed Oil.  
**Crown Brand**  
 The Quality of the Oil is the Life of the Paint.

**PURE READY-MIXED PAINTS**

Manufactured by G. F. STEPHENS & CO., Market St., WINNIPEG.

The Commercial is mailed regularly every Saturday afternoon, and should be delivered at nearly all Manitoba points by Monday morning or during the day on Monday. Subscribers will confer a favor by notifying this office of any delay or irregularity in receipt of the paper.

**F**AR-SEEING PEOPLE are the most successful. They look ahead and plan what is best for their future, and with this object in view get a Useful and Money-Making Education at

*WINNIPEG Business College*

This institution has been largely patronized during the past few years and is now located in splendid premises, fitted up expressly for business college work. Over 100 students have been assisted to positions through its influence last year. Full particulars on application.

C. W. DONALD, Sec.

**JOHN GUNN**

Dealer in all kinds of

**BUILDING and DIMENSION**

**STONE**

White and Grey **LIME**

Quarried at Stoneville, Stony Mountain and Tyndall.

Office: **402 McIntyre Block, WINNIPEG**

Box 520.

**THE OLIVER TYPEWRITER, \$95**

The Invoice and Statement work that can be done on the OLIVER, is beautiful to look upon and costs so little to do, that, putting it broadly, an Oliver Typewriter will save you the wages of at least one invoice clerk, and reduce the chance of error. This is worth investigating.

AGENTS WANTED.

**F. A. DRUMMOND, WINNIPEG MAN.**

Agent for Manitoba and N.W.T.

Office and Works: 156 ST. ANTOINE ST., MONTREAL.

**SEEDS**

Merchants for 1900

Push the ..

**Steele-Briggs Seeds**

They have the 4 points for success in your seed business, viz:

- 1st—Always Reliable.
- 2nd—Most Widely Advertized.
- 3rd—Most Attractively Got Up.
- 4th—Give a Good Round Profit.

See our big daily and weekly "ads." They don't forget the merchant. Please return the compliment by pushing our seeds, whenever possible, from box or catalogue.

We handle all seeds in all quantities, and cheerfully answer any written or wire inquiries.

**The STEELE-BRIGGS SEED CO. Ltd.**

TORONTO

**COLLECTIONS**

**Commercial Co-Operative Collections Co.**

Solicits all classes of accounts for collection. Highest references.

Office: 5th Floor, McIntyre Bldg., Winnipeg P. O. Box 882.

**When Stocking Up This Spring**

You need not be afraid to put in a good supply of

**CURRENCY and SNOWSHOE CHEWING**

**EMPIRE PLUG SMOKING**

These Brands are becoming more popular with consumers every day. We are going to help you introduce them by sampling from house to house and extensive advertising, which will make them known in every house where tobacco is used.

FOR SALE BY ALL WHOLESALE DEALERS.

**Empire Tobacco Co. Ltd.**

Statistical Wheat Report.

WHEAT IN CANADA.

Stocks of wheat in Canada at principal points of accumulation are reported as follows:

Montreal	52,000
Toronto	98,000
Kingston	65,000
Coteau, Que.	111,000
Depot Harbor, Ont.	387,000
Winnipeg	100,000
Manitoba elevators	5,200,000
Fort William, Port Arthur and Keewatin	3,400,000

Total March 17 ... 9,683,000  
Total a year ago ... 9,540,000

BRADSTREET'S REPORT OF STOCKS.

Total stocks in the United States and Canada, east of the Rocky Mountains as reported by Bradstreet's March 17, were 82,807,000 bushels.

Total stocks in the United States and Canada a year ago were 51,375,000 bushels, according to Bradstreet's report.

Pacific coast wheat stocks on March 1 were 7,814,000 bushels, compared with 5,923,000 bushels a year ago.

THE VISIBLE SUPPLY.

The Chicago visible supply statement of stocks in the United States and Canada, east of the Rocky Mountains, for the week ended March 24, was 54,093,000 bushels, being an increase of 182,000 bushels for the week. A year ago the visible supply was 50,067,000 bushels, two years ago 50,061,000 bushels, three years ago 50,023,000 bushels, and four years ago 61,048,000 bushels.

STOCKS OF OATS AND CORN.

The visible supply of oats in the United States and Canada, east of the Rocky Mountains is 6,899,000 bushels, compared with 11,229,000 bushels a year ago. The visible supply of corn is 21,111,000 bushels, compared with 23,277,000 bushels a year ago, according to the Chicago statement.

WORLD'S WHEAT STOCKS.

Stocks of wheat in America and Europe and flour for Europe March 1, in each year, for a series of years, were as follows—Bradstreet's report:

Year	Bushels
1900	159,654,000
1899	124,389,000
1898	118,515,000
1897	133,721,000
1896	172,153,000
1895	193,746,000

CROP MOVEMENT.

The following table gives the receipts of wheat at the four principal United States spring wheat markets, from the beginning of the crop movement, Aug. 1, 1899, to date, compared with the same period of last year:

	This crop.	Last crop.
Minneapolis	63,371,590	66,985,766
Milwaukee	8,258,992	10,562,023
Duluth	41,733,117	63,190,166
Chicago	19,005,400	28,081,233

Total ... 132,969,999 167,419,471

The following table gives the receipts of wheat at the four principal United States winter wheat markets, from the beginning of the crop movement, July 1, 1899 to date, compared with the same period of last year:

	This crop.	Last crop.
Toledo	10,475,542	11,692,230
St. Louis	7,955,689	12,928,042
Detroit	3,320,577	4,354,996
Kansas City	12,373,740	23,410,613

Total ... 34,125,748 52,385,911

A. E. BURCH & CO.

GRAIN AND STOCK BROKERS.....

Private Wire connection with American markets We also handle Manitoba Wheat. Wire or write for prices. Will make advances on Bills of Lading Office, 312 McIntyre Block, Winnipeg. Tel. 473.

Grain and Milling Notes.

It was reported in Montreal last week that a Winnipeg firm had sold 200,000 bushels of Manitoba wheat for May shipment.

Winnipeg Prices a Year Ago.

Following were Winnipeg prices this week last year:

Wheat—No. 1 hard wheat quoted at 71c March delivery.

Flour—Local price per sack. Patent, \$1.80; best bakers', \$1.60.

Oatmeal—\$1.90 per 80 pound sacks of Manitoba meal.

Millstuffs—Bran, \$11 per ton; shorts, \$13 delivered to city dealers.

Oats—Carlots on track, 34 to 37c for feed.

Flaxseed—Per bushel, retail, 70 to 80c.

Barley—28 to 33c per bushel.

Corn—In carlots, 41 to 43c per bushel of 56 lbs.

Butter—Dairy, jobbers offer 13 to 17c; creamery, 22 to 23c to retail trade.

Cheese—9 3/4 to 10c per pound.

Eggs—Buyers offer 17c for Manitoba fresh.

Hides—No. 1 green hides, 61-2 to 7c; frozen stock, 6 to 6 1/2c per lb.

Wool—8 to 8 1/2c for unwashed fleece. Seneca—19c per lb.

Hay—Baled, \$6.50 to \$7.50 per ton on cars. Loose, worth \$6 to \$7.50 ton.

Potatoes—10 to 15c per bushel on the street.

Dressed Poultry—Turkeys, 10 to 12c per lb.; chickens, 10 to 12c; geese, 8 to 9c. Live chickens 60 to 70c per pair.

Dressed Meats—Fresh killed beef, 6 to 7c; mutton 7 to 8c; lamb, 8 to 9c; hogs, 5 1/2-1 to 6c; veal, 6 to 7c.

Live Stock—Cattle, 1-2 to 4c for butchers' stock; stockers, \$10 to \$14 for yearlings; sheep, 4-1-2 to 5c; hogs, 4-1-2 to 4-3-4c off cars for selected weights.

KIRKPATRICK & COOKSON MONTREAL.

Consignments of Grain and Manitoba Produce solicited.

F.O.B. offers of Wheat, Barley, etc., requested. Established 1860. Manitoba Grain Code used

JAMES CARRUTHERS & CO.

GRAIN EXPORTERS

MONTREAL, TORONTO and WINNIPEG,

C. TILT, Manager Winnipeg Branch Office: Grain Exchange.

THE WINNIPEG ELEVATOR CO. LTD.

GRAIN EXPORTERS

GRAIN EXCHANGE WINNIPEG

Wm. S. LOGAN

GRAIN AND COMMISSION MERCHANT

ROOM 241 GRAIN EXCHANGE

WINNIPEG

W. C. GRAHAM

GRAIN DEALER

Wire or write for prices before selling. P. O. Box 218



WINNIPEG GRAIN AND PRODUCE EXCHANGE

President W. L. PARRISH  
Vice-President WM. MARTIN  
Secy.-Treas. CHAS. N. BELI

THOMPSON SONS & Co.

GRAIN COMMISSION MERCHANTS. . . . GRAIN EXCHANGE, WINNIPEG

We would ask MILLERS & GRAIN DEALERS in Manitoba and the Northwest to correspond with us when shipping or selling wheat at Fort William or Duluth. We make a specialty of this business, having unexcelled facilities for doing it to advantage, attending to the grading, getting returns promptly, insuring and financing, and we make prompt and satisfactory settlements. DAILY MARKET REPORT SENT FREE. References: Any chartered Bank in Manitoba or N. W. T. Members: Winnipeg Grain Exchange, Fort William Board of Trade.

ALEX. MCFEE & Co.

GRAIN EXPORTERS

Board of Trade Bld'g Room 15, Grain Exchange MONTREAL WINNIPEG

W. GIBBINS & CO

GRAIN BROKERS and MERCHANTS

GRAIN EXCHANGE, WINNIPEG.

Highest prices paid and advances made on Bill of Lading and Winnipeg inspection Chicago options attended to for 1/2c per bushel.

A. E. MCKENZIE & Co.

Dealers in FIELD SEED GRAIN AND GRASSES.

Also GARDEN SEEDS OF ALL KINDS.

Write for our Catalogue.

BRANDON. MAN,

# Don't Your Trade

WANT THE BEST? If so, give them our "British Crown" Packet Teas, packed in CALCUTTA and shipped direct to CALGARY.

BRITISH CHOICE EMPIRE  
and CIRCLE BRANDS

## LUCAS, STEELE & BRISTOL

HAMILTON, ONT.

C. R. DIXON, CALGARY

## THE NINETEENTH CENTURY

Has passed away, and with it let pass away all your follies in eating and drinking. Commence the regular use of

# OXOL

And the aged and drooping will enjoy decades of rugged health, while the young and strong will live to enter upon

## THE TWENTY-FIRST CENTURY

The trade supplied through the wholesale grocers or druggists or direct from the factory.

HEADQUARTERS: .

Cor. St. Peter and Foundling Streets, MONTREAL

R. J. GALLAGHER, North Western Agent, Winnipeg.

## BUYING EAST

Many lines you cannot buy elsewhere than East, but for Printing, whether it be Counter Books or Posters, Catalogues or Ledgers, or any filler for patent binders or otherwise, you need not go out of our own Province, or past the

# Franklin Press...

Successors to  
Buckle Ptg. Co.

**PRINTERS**

293 Market St.  
Opp. Grain Exchange.

## Winnipeg.

APPLETON & MORRIS

WRITE FOR QUOTATIONS.

## SOME SPRING LINES



WALL PAPERS

Elegant Fringes and Borders  
All New Goods

SHIRT BAGS

HAT BAGS

MILLINERY BAGS

FEATHER BAGS, Etc.

WRAPPING PAPERS

PAPER BAGS

TWINES, Etc.

## THE CONSOLIDATED STATIONERY CO., Ltd

McDERMOTT AVE., WINNIPEG

**Grocery Trade Notes.**

Bright & Johnston had a car of extra fancy Spy apples in from Ontario this week.

Red pepper is dearer in primary markets according to cables of last week.

The new salt season is opening in Canada and Winnipeg houses have been contracting for fresh stocks this week.

Large quantities of new crop Java sugar have been sold recently for shipment to the United States.

Contracts for future delivery of new crop canned corn have been made at 10c over the opening price of last year.

Jobbin, Marrin & Co., are showing a new kind of yeast this week, which is well recommended. It is put up by a London, Ontario, firm.

The British war office is taking immense quantities of Canadian jam for the troops in South Africa, and their orders have had the effect of making the market very firm.

Barbadoes molasses advanced 1c per gallon at the island last week, making the regular price now 16c. The demand for this article is said to be very active and the supply light.

Potatoes are now being brought in to Winnipeg in earlots from country points to supply the city trade. Dealers pay from 25 to 30c per bushel for them at points of shipment and supply the bags.

Winnipeg jobbing houses have been making contracts this week for supplies of new pack canned fruit and vegetables for future delivery. Prices being paid are on a basis of recent quotations in these columns.

The stock of beans available for commercial purposes in Canada is now down to 50,000 bushels. This must carry the market until another crop is available. The demand is heavy and prices very firm. The United States government is still making purchases for army purposes.

Cables from Sicily report a continued upward movement in the price of shelled almonds, as a result of the reported serious damage to the coming crop by frost and storm. Last cable quotation was 80s. Cables from France also denote much higher prices on Alente almonds.

Canned lobsters have advanced to \$12.50 and \$14.00 per case at Halifax, the highest price yet asked since the canning industry was established. This advance is due to the fact that supplies of raw fish are becoming more difficult to get each year owing to the destruction wrought by fishermen in taking immature and berried lobsters. The Dominion government proposes to amend the regulations so as to provide against this in future. The annual pack of lobsters is about 250,000 cases.

Cured meat prices advanced at Montreal last week owing to the greatly increased cost of dressed hogs. Pork advanced 50c to \$1 per barrel, lard 1c per lb.; hams 1c per lb., and bacon 1-2c per lb. Quotations now range as follows: Heavy Canada short cut mess pork, \$16.50 to \$17; short cut back pork, \$15.50 to \$16; selected heavy short cut mess pork, boneless special quality, \$17.50 to \$18, and heavy mess pork, long cut, \$15.50 to \$16; pure Canadian lard, \$1.4c to \$1.4c per lb.; and compound refined at 63-4 to 73-4c per lb. Hams 11c to 13c, and bacon, 11-2 to 13c per lb.

The foreign market for raw sugar developed unexpected strength last week and beet advanced 31-2d on the week. March and April being quoted at 10s. 3d. Cane sugar also advanced. It seems likely that a combination of German beet sugar manufacturers will be formed in the near future and to this fact is attributed the new strength in the market as such a combination would be almost sure to advance prices.

Valencia raisins are practically no longer obtainable at primary points and jobbing houses here are having trouble to obtain fresh supplies. One city house had a carload in this week, which is expected to be the last for some time. The stocks in the city are being carefully husbanded. The reason of this scarcity is the large demand for the stock due to the fact that California fruit was advanced last year to a point which made further importations unprofitable, while Valencians could be obtained.

**THE DRY GOODS TRADE.****DRY GOODS MARKET.**

The outlook continues very firm in all departments of the dry goods trade. Advices to hand continue to speak of great activity at the mills, both in Canada and Great Britain. Everywhere manufacturers are behind with their orders, and while this condition lasts there is not likely to be any change in the situation in the direction of easier prices. The situation is, therefore, one of continued firmness and there is no prospect at present of any change. There can hardly be any change for this year at least, as manufacturers in some lines have now almost enough business in sight to keep them busy to the end of the year, even working over-time. In such a staple line as domestic cottons, the mills are very busy, and it is difficult to get prompt deliveries of orders. One mill reports being sold up to September. There can hardly be any question, therefore as to firmness of values for the present year at least. Travellers will be going out next month for sorting business, and with a few early lines for the fall trade, including underwear. Woolen underwear, as previously noted, shows an advance of about ten per cent. for the fall trade. In fleece lined underwear the situation has been uncertain. A sharp advance was expected in this line, but it is now stated that there will not be an advance in fleece lined underwear, owing to new competition coming into the field. The goods must, of course, cost more to manufacture owing to increased cost of raw material. Manufacturers will therefore have less profit than formerly on this line.

**DRY GOODS TRADE NOTES.**

Lace is being freely used for trimming hats this year.

Suede gloves are in better demand this year east than for a long time.

Louis Simpson, of Valleyfield, has been looking over the Ottawa district with a view of starting a cotton mill.

The Imperial Cotton Company, of Hamilton, is seeking incorporation with a capital of \$750,000. They will manufacture principally cotton duck.

Donald Fraser & Co., wholesale clothiers, Winnipeg and Montreal, have their travellers out now with fall and winter samples. They claim that their range is exceptionally choice.

**Hardware Trade Notes.**

Steam refined seal oil advanced 2 1-2 per gallon at Montreal last week.

Rodgers cutlery has advanced 5 to 10 per cent in price to the jobbing trade.

The rolling mill proper of the Montreal Rolling Mills works, was destroyed by fire on March 24. Loss \$60,000. Fully insured. The other departments of the works were not burned, and except in the rolling mill, business will go on as usual.

**Implement Trade Notes.**

The time for receiving orders from farmers for binder twine manufactured at Kingston penitentiary has been extended to May 1st.

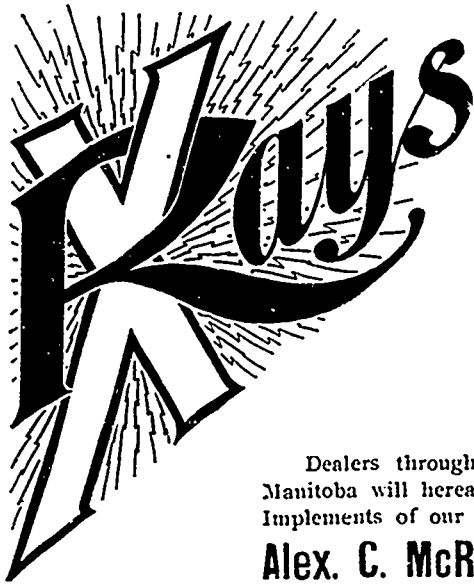
United States catalogue houses are reported to be making their usual preparations for demoralizing the twine market by cutting prices and protecting themselves against loss by selling short twine. Farmers are, however, getting educated to the fact that even in buying twine they usually only get the worth of their money and sometimes a great deal less and are this year showing a preference for making their twine contracts with representatives of reliable factories.

Advices from the United States report that implement and farm machinery manufacturers are very busy this season. Many of the factories have all the work they can conveniently handle, and they are getting better prices at home than they can secure from their Canadian agencies, the price of implements having been advanced to a greater extent in the United States than in Canada. This being the case, some of the United States makers are not anxious to push business abroad. Another feature is the labor market, which is very much disturbed at some manufacturing centres, where a demand for higher wages is growing in intensity. Some of the big factories number their hands by thousands, and a strike would be a very serious matter for them. Labor troubles at some points have actually broken out, and other large manufacturing concerns are in daily fear of trouble of this nature.

**Lumber Trade Notes.**

The demand for sash and doors in the northwestern states has fallen off to some extent, and manufacturers are not so keen for further advances in price as they were at the end of January when car lot orders were to be had in abundance without asking. February and March have been marked by a light demand throughout. It is however, regarded as tolerably certain that April will develop renewed activity, and prices may advance again then.

Work has now been closed in the woods for the season and the camps have moved out. The winter has been an unsatisfactory one in the woods, owing to the entire absence of snow during the first half of the winter, and hardly sufficient snow to make fair sleighing at any time during the winter. The result of this has been that whereas a large increase in the cut of logs was expected this winter, the cut will barely equal that of last winter. There has also been an increased cost in handling the logs, as owing to the poor condition of the roads, more horses and more labor was required than is the case under normal conditions. This, with the firm labor market, is a further reason for expecting a strong market for lumber for some time to come.



SULKY  
and  
GANG

PLOWS



Bradley Jr. Disk Harrows

U-Bar Lever Harrows and

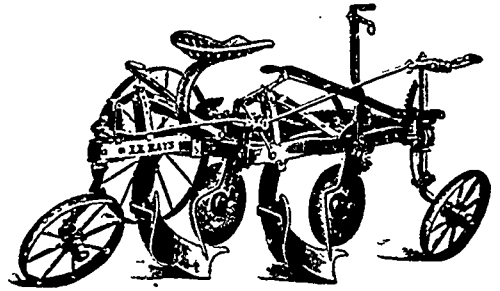
Other Farm Implements



Dealers throughout the Province of Manitoba will hereafter be supplied with Implements of our manufacture by

**Alex. C. McRae, Winnipeg**

with whom we have arranged to look after our business in that Province, and who will carry a Full Stock of Implements direct from the factory, including a large supply of Extras for the quick accommodation of our patrons. Our XX Rays Gang Plows, with malleable frog and no landside, is shown to the right. Write Mr. McRae for descriptive circular and price of this and our other goods.



**DAVID BRADLEY MFG. CO.**

BRADLEY, ILL.



## Now Ready for Fall and Winter



We are now showing the most Complete Line we ever manufactured, Comprising

**Ready-to-Wear Suits, Overcoats, Ulsters, Trousers, Etc. in Men's, Youth's, Boy's, and Children's Clothing**

We are represented in Manitoba and the Territories by W. G. Shea and John W. Irwin, who will call shortly with our whole range, and all orders entrusted to us will receive our best and prompt attention.

**McKENNA, THOMSON & CO.**

Successors to Jas. O'Brien & Co.

423-425 and 427 ST. JAMES ST., MONTREAL

## "Crescent" Steel Agate Ware

Our other Brands of Enamelled Ware :

"PREMIER"

"PRINCESS"

WHITE



BLUE and WHITE

WHITE and "STAR"

Decorated.

TINWARE OF EVERY DESCRIPTION

**THE THOS. DAVIDSON MANUFACTURING CO. LTD., MONTREAL**

Full stock carried in Winnipeg by our Manitoba and North-West Agents, MERRICK, ANDERSON & CO.

Cable Address: "Trestler" Hamburg.  
Code: ABC,

**M. TRESTER**

HAMBURG, GERMANY.

General Commission Agent and Consignee for all kinds of American Farm and Dairy Produce, desires to represent a good house exporting, or intending to export Grain, Flour, Seeds, to sell direct to purchasers against drafts, also solicits consignments of Leather, hides, Skins, Raw Furs, Tallow, Lard, Castor-cum, Seneca and other Northwestern Canadian export products, Highest American and European references.

Established 1865.

WINNIPEG PRICES CURRENT

GROCERIES		Dried Fruits		Tobacco		DRUGS	
Prices to retail dealers for ordinary lot, with usual discounts for cash or large lots.		Per pound		Per pound		Following are prices for parcel lots with usual reductions for unbroken packages.	
<b>Canned Goods</b>		Raisins, Val., fine, off stalk 2 10		T. & B., 3s, 4s, and 9s Cads.. 00 70		Alum, lb..... 3 1/2 4 1/2	
Apples, 3s, 2 doz..... 2 15	2 25	Raisins, Selected, off stalk 2 10	2 20	Lily, 5s, cads..... 00 61	Bleaching Powder, lb..... 05 07	Alcohol, gal..... 5 25	5 50
Apples, preserved, 3s, 2 doz..... 3 25	3 25	Raisins, Val. Layers, per box 2 25	2 30	Crescent, 5s, cads..... 00 58	Bluestone, lb..... 07 10	Borax..... 09 10	75 50
Apples, scallions (per doz.) 3 20	3 5	Clusters, 3 Crown..... 2 25	2 25	T. & B. Black Chewing, 5s or 16s	Camphor..... 70 70	Camphor, ounces..... 75 50	50 50
Black or Lawton berries, 2s, 2 doz..... 2 25	3 50	Loose Muscatels, 2 crown..... 2 75	2 75	T. & B. Mahogany Chewing, 5s or 16..... 00 61 1/2	Carbolic Acid..... 50 50	Castor Oil..... 13 20	18 20
Beans, 2s, 2 doz..... 2 00	2 10	Loose Muscatels, 3 crown..... 2 90	2 90	T. & B. in 1-12 pkg, cut..... 00 85	Chlorate Potash..... 18 20	Citric Acid..... 60 65	65 65
Corn, 2s, 2 doz..... 2 00	2 40	London Layers, 20 lb boxes..... 1 00	2 00	T. & B. in 1-5 tins..... 00 97	Copperas..... 03 04	Cocaine, oz..... 6 00	6 50
Cherries, red, pitted 2s, 2 doz 3 00	4 00	Apples, Dried..... 07 1/2 08	07 1/2 08	T. & B. in 1/2 tins..... 00 83	Cream Tartar, lb..... 25 32	Cloves..... 20 25	25 25
Peas, Marrowfat, 2s, 2 doz..... 1 85	1 00	Kvay Apples, finest quality..... 08 1/2 09	08 1/2 09	T. & B. in 1s tins..... 00 86	Extract Logwood, bulk..... 12 10	Extract Logwood, boxes..... 17 24	24 24
Peas, sifted, 2s, 2 doz..... 2 25	2 25	<b>California Evaporated Fruits</b>		Orinoco, 1-12 pkg..... 00 81	Formalin, per lb..... 40 45	German Quinine..... 50 55	55 55
Pears, Bartlett, 2s, 2 doz..... 3 25	3 50	Peaches, peeled..... 17 15	17 15	Orinoco, 1-5 tins..... 00 90	Glycerine, lb..... 22 25	Ginger, Jamaica..... 30 35	35 35
Pears, California, 2 1/2s, 2 doz..... 4 50	4 75	Peaches, unpeeled..... 11 12	11 12	Tuckitts Cherub Cigarette 1-12..... 00 85	Howard's Quinine, oz..... 60 65	Iodine..... 4 75	5 00
Pears, Bartlett, 3s, 2 doz..... 5 00	5 50	Pears..... 13 1/2 13	13 1/2 13	Brier, 5s, cads..... 00 63	Insect Powder..... 30 35	Morphia, sul..... 2 00	2 25
Pineapple, 2s, 2 doz..... 4 75	4 75	Apricots..... 11 11 1/2	11 11 1/2	Derby, 3s and 4s, cads..... 00 65	Opium..... 4 50	Oil, olive, Pure..... 2 10	2 25
Pineapple, imported, 2s, 2 doz 5 00	6 00	Nectarines..... 13 13 1/2	13 13 1/2	Derby, 5s, cads..... 00 65	Oil, U.S. Salad..... 1 10	Oil, lemon, super..... 1 60	1 80
Peaches, 2s, 2 doz..... 3 90	4 25	Prunes, 100 to 120..... 5 1/2 5 1/2	5 1/2 5 1/2	P. & W. Chewing, Cads..... 00 65	Oil, peppermint..... 1 50	Oil, cod liver, gal..... 1 25	1 75
Peaches, California, 2 1/2s, 2 doz 5 00	5 00	Prunes, 90 to 100..... 6 1/2 6 1/2	6 1/2 6 1/2	P. & W. Chewing, Butts..... 00 65	Oxalic Acid..... 14 16	Potass Iodide..... 3 75	4 00
Peaches, Canadian, 3s, 2 doz 6 25	6 50	Prunes, 80 to 90..... 6 1/2 6 1/2	6 1/2 6 1/2	Tonka, 1/2 tins..... 00 00	Paris Green, lb..... 28 30	Saltpetre..... 08 10	10 32
Plums, 2s, 2 doz..... 2 75	3 00	Prunes, 70 to 80..... 5 1/2 5 1/2	5 1/2 5 1/2	Canadian Leaf, 50 lb bales, very bright..... 21	Saltpetre..... 08 10	Sal Rochelle..... 28 32	32 32
Plums, California, 2 1/2s, 2 doz 4 50	4 50	Prunes, 60 to 70..... 5 1/2 5 1/2	5 1/2 5 1/2	Lower grades..... 12 1/2 15	Shellac..... 28 32	Sulphur Flowers..... 3 1/2 04	04 04
Pumpkins, 3s, 2 doz..... 2 00	2 25	Prunes, 40 to 50..... 5 1/2 5 1/2	5 1/2 5 1/2	<b>Empire Tobacco Co.'s List</b>			
Raspberries, 2s, 2 doz..... 3 00	3 25	<b>Matches</b>		<b>SMOKING.</b>			
Strawberries, 2s, 2 doz..... 3 00	3 25	Telephone..... 4 00	4 00	Virgin Gold, 4 s..... 72	Strychnine, pure crystals, oz..... \$5 1 00		
Tomatoes, 3s, 2 doz..... 2 35	2 40	Tiger..... 3 90	3 90	Marigold, 5 s..... 55			
Salmon, tails, 1s, 4 doz..... 7 25	6 00	Parlor Matches, Eagle..... 1 75	1 75	Monarch, 3 1/2 s..... 59			
Salmon, Cohoes tails, 1s, 4 doz 7 50	5 00	<b>Nuts</b>		Clover, Double Thick, 5 s..... 54			
Sardines, domestic 1/2s..... 0 1 1/2 05	0 1 1/2 05	Brazils..... 11 12 1/2	11 12 1/2	<b>Wooden Ware</b>			
Sardines, imported, 1/2s..... 0 1 1/2 15	0 1 1/2 15	Taraona Almonds..... 15 15 1/2	15 15 1/2	Pails, 2 hoop clear..... 1 95	2 00		
Sardines, imported, 3/4s..... 1 25	1 25	Peanuts, roasted..... 11 11 1/2	11 11 1/2	Pails, wire hoop..... 2 20	2 25		
Sardines, imp. 1/2s, boneness 20	33	Peanuts, green..... 9 10	9 10	Pails, Star fibre..... 3 50	3 50		
Sardines, Dom., mustard 1/2s..... 10 12	10 12	Grenoble Walnuts..... 14 12	14 12	Tubs, No. 0 common..... 11 50	12 00		
<b>Per doz.</b>		French Walnuts..... 13 14	13 14	Tubs, No. 1 common..... 10 00	10 50		
Imported Fresh Herring, 1s, 1 doz 1 50	1 50	Sicily Filberts..... 15 11	15 11	Tubs, No. 2 common..... 8 00	8 50		
Imp. Kipperd Herrings, 1s, 1 doz 1 75	1 85	Shelled Almonds..... 30 35	30 35	Tubs, No. 3 common..... 6 75	7 25		
Imp. Herrings, Tom. Sauce 1s, 1 doz 1 90	1 90	<b>Syrup</b>		<b>Per nest.</b>			
Imp. " Anch. Sauce 1s, 1 doz 1 90	1 90	Extra Bright, per lb..... 30	3 1/2 30	Tubs, nests (3)..... 1 90	2 00		
Imp. " Shrimp Sauce 1s, 1 doz 2 00	2 00	Medium, per lb..... 2 1/2 30	2 1/2 30	Tubs, wire hoop (3)..... 2 25	2 40		
<b>Canned Meats</b>		Maple, case 1 doz. 1/2 gal. tins 75	7 00	<b>Per doz.</b>			
Corn Beef, 1s, 2 doz..... 3 20	3 25	Molasses, per gal. (New Ori.) 34c	35c	Tubs, fibre, No. 0..... 16 50	16 50		
Corn Beef, 2s, 1 doz..... 2 85	3 00	Porto Rico..... 45	40	Tubs, fibre, No. 1..... 14 50	14 50		
Lunch Beef, 2s, 1 doz..... 2 90	3 00	Barbadoes..... 45	50	Tubs, fibre, No. 2..... 12 50	12 50		
Lunch Tongue, 1s, 2 doz..... 6 00	6 25	<b>Sugar</b>		Tubs, fibre, No. 3..... 10 50	10 50		
Lunch Tongue, U.S. 2s, 1 doz 6 75	7 00	Extra Standard Gran..... 5 20	5 20	<b>Per nest.</b>			
Lunch Tongue, Can. 2s, 1 doz 6 00	6 00	German Granulated..... 5 10	5 10	Butter Tubs, wire hoop (2)..... 57	57		
Brawn, 2s, 1 doz..... 2 60	3 00	Extra Ground..... 7c	7c	Butter Tubs, wire hoop (3)..... 90	90		
Pigs Feet, 1s 2 doz..... 2 50	2 90	Powdered..... 6 1/2 6 1/2	6 1/2 6 1/2	Washboards, Globe, per doz..... 2 00	2 25		
Roast Beef, 2s, 1 doz..... 2 85	3 00	Lumps..... 6 6 1/2	6 6 1/2	<b>Perfection, per doz. 2 20 2 35</b>			
<b>Per doz.</b>		Bright Yellow Sugar..... 4 40	4 50	<b>CURED MEATS, ETC.</b>			
Chicken, Duck or Turkey, 1s 2 doz 2 60	2 60	American..... 4 1/2 4 1/2	4 1/2 4 1/2	Lard, pure leaf, steam rend..... \$ 1 50			
Potted Ham, 1/2s..... 65 70	65 70	Maple Sugar..... 13 1/2 15	13 1/2 15	Lard, pure, in 3 5 and 10 lb. tins, per case of 60 lbs..... 6 00			
Devilled Ham, 1/2s..... 65 70	65 70	Rock Salt..... 1 1/2 1 1/2	1 1/2 1 1/2	Lard, pure, Tierces, per lb..... 5 1/2			
Potted Tongue, 1/2s..... 65 70	65 70	Common, fine..... 2 00	2 00	Lard, soft tubs..... 5 1/2			
Potted Ham, 1/2s..... 1 30	1 40	Common, coarse..... 3 25	3 50	Lard, Compound, 20 lb pails..... 35 1 40			
Devilled Ham, 1/2s..... 1 30	1 40	Dairy, 100 3..... 3 15	3 30	Lard, Compound, 3 and 5 lb. tins, case 60 lbs..... 4 50			
Potted Tongue, 1/2s..... 1 30	1 40	Dairy, 60-5..... 3 15	3 30	<b>Smoked Meats</b>			
<b>Coffee</b>		Dairy, white duck sack..... 00 45	00 45	Hams..... 12 12 1/2	12 12 1/2		
Green Rio..... 1 1/2 1 1/2	1 1/2 1 1/2	Common, fine jute sack..... 00 43	00 43	Breakfast bacon, bellies..... 12 12 1/2	12 12 1/2		
Inferior grades..... 1 1 1/2	1 1 1/2	<b>Spices</b>		Breakfast bacon, backs..... 10 11	10 11		
<b>Coronals</b>		<b>Salt</b>		Spiced rolls..... 9 1/2	9 1/2		
Split Peas, sack 95..... 2 50	2 50	Common..... 1 1/2 1 1/2	1 1/2 1 1/2	Shoulders..... 8 1/2	8 1/2		
Pot Barley, sack 95..... 2 30	2 40	Assorted Herbs, 1/2 lb tins..... 75	90	Pic-nic Hams..... 9	9		
Pearl Barley, sack 95..... 3 75	4 00	Allspice, whole..... 15 20	15 20	<b>Dry Salt Meats</b>			
Roiled Oatmeal, sack 50..... 1 75	1 75	Allspice, pure ground..... 15 22	15 22	Long clear bacon..... 0	0		
Standard Oatmeal, sack 95..... 2 25	2 25	Allspice, compound..... 15 15	15 15	Shoulders..... 8	8		
Granulated Oatmeal, sack 95..... 2 25	2 25	Cassia, whole..... 15 20	15 20	Short Clear..... 9 1/2	9 1/2		
Beans (per bushel)..... 2 10	2 15	Cassia, pure ground..... 20 25	20 25	Backs..... 9	9		
Cornmeal, sack 95..... 1 20	1 20	Cassia, compound..... 13 15	13 15	<b>Per barrel</b>			
Cornmeal, 1/2 sac 49 (per 1/2 sac) 0 65	0 65	Cloves, whole..... 17 20	17 20	Heavy mess..... 15 17 00	15 17 00		
<b>Per pound</b>		Cloves, pure ground..... 25 30	25 30	Short cut..... 15 50	15 50		
Rice, B..... 4 1/2 4 1/2	4 1/2 4 1/2	Cloves, compound..... 15 20	15 20	<b>Meat Sundries</b>			
Patna..... 5 1/2 5 1/2	5 1/2 5 1/2	Pepper, black, whole..... 16 17	16 17	Fresh pork sausage, lb..... 5	5		
Rice, Japan..... 5 1/2 5 1/2	5 1/2 5 1/2	Pepper, black, pure ground..... 15 20	15 20	Bologna sausage, lb..... 5	5		
Sago..... 4 1/2 5c	4 1/2 5c	Pepper, black, compound..... 10 13	10 13	Pickled pigs feet, kits..... \$ 1 40	\$ 1 40		
Tapioca..... 5 1/2 5 1/2	5 1/2 5 1/2	Pepper, white, whole..... 23 25	23 25	Sausage casings, lb..... 30	30		
<b>Cigarettes</b>		Pepper, white, pure ground..... 23 25	23 25				
Old Judge..... \$ 7 50	\$ 7 50	Pepper, white, compound..... 15 20	15 20				
Athlete..... \$ 5 50	\$ 5 50	Pepper, Cayenne..... 25 30	25 30				
Sweet Caporal..... \$ 5 50	\$ 5 50	Ginger, whole, Jamaica..... 25 30	25 30				
Sweet Sixteen..... \$ 5 50	\$ 5 50	Ginger, whole, Cochina..... 20 25	20 25				
Derby..... \$ 5 50	\$ 5 50	Ginger, pure ground..... 23 25	23 25				
T. & B..... \$ 5 50	\$ 5 50	Ginger, compound..... 15 25	15 25				
<b>Cured Fish</b>		Nutmegs, (per pound)..... 55 56	55 56				
Bonless Hake, per lb..... 05	05 1/2	Mace (per pound)..... 75 80	75 80				
Codfish, whole cases, 100 lbs..... 6 50	6 50	<b>Tea</b>					
Codfish, Pure per lb..... 7 1/2	7 1/2	China Blacks—	Per pound				
Herrings, in half-barrels..... 4 00	4 00	Choice..... 35 40	35 40				
Digby clicks..... 10 16	10 16	Medium..... 25 35	25 35				
<b>Dried Fruits</b>		Common..... 13 20	13 20				
Currants, new, Prov'l Bbls..... 05 1/2 5 1/2	05 1/2 5 1/2	Indian and Ceylon—	Per pound				
Currants, Prov'l Cases..... 5 1/2 5 1/2	5 1/2 5 1/2	Choice..... 32 40	32 40				
Currants, Prov'l 1/2 Barrels..... 05 1/2 5 1/2	05 1/2 5 1/2	Medium..... 25 32	25 32				
Currants, Filiatia, bbls..... 05 1/2 5 1/2	05 1/2 5 1/2	Common..... 16 22	16 22				
Currants, Filiatia, cases..... 05 1/2 5 1/2	05 1/2 5 1/2	Young Hysons—	Per pound				
Currants, cleaned, cases..... 07 7 1/2	07 7 1/2	Choice..... 35 45	35 45				
Dates, Cases..... 07 1/2 08	07 1/2 08	Medium..... 25 35	25 35				
Figs, 1/2 lb, about 10 lb box..... 20 22	20 22	Common..... 22 30	22 30				
Figs, Glove Box, per doz..... 20 20	20 20	Japan—	Per pound				
Figs, Cooking, 5-c..... 06 1/2 07	06 1/2 07	Finest May Picking..... 35 40	35 40				
Figs, Boxes..... 07 1/2 08	07 1/2 08	Choice..... 30 35	30 35				
Figs, Tappets..... 05 5 1/2	05 5 1/2	Fine..... 25 30	25 30				
Figs, Portuguese, boxes..... 06 1/2 07	06 1/2 07	Good Medium..... 20 25	20 25				
Sultana Raisins..... 10 1/2 11	10 1/2 11	Common..... 15 20	15 20				



TO THE TRADE.

## Our Brands

Are a guarantee of superior value. Customers know the rapid selling "Crescent" Black Dress Goods, "Seabelle" Black and Navy Serges, "Abergeldie" Costume Cloths, "Imperial" Velveteens and Hosiery, "Queen City" Cotton Goods, and all goods bearing our trade mark.

Filling Letter Orders a Specialty.

### John Macdonald & Co.

Wellington and Front Sts. E.,  
TORONTO, ONT.

## RICE LEWIS & SON

LIMITED

ARTHUR B. LEE, President  
A. BURDETT LEE, Vice-Pres. and Treas.

WHOLESALE

# HARDWARE

BAR

## IRON AND STEEL

Steam Pipe and Fittings

Sporting Goods



Write for Prices

**TORONTO, - ONT.**

## S. GREENSHIELDS SON & Co.

MONTREAL.

Wholesale

**DRY GOODS**

**MEN'S FURNISHINGS**

**CARPETS, Etc.**

Winnipeg Sample Room:

**412-414 McIntyre Block**

Represented by:

R. R. GALLAGHER  
G. M. NEWTON

## D. R. DINGWALL

WHOLESALE

# Jeweller

424 AND 584 MAIN STREET  
WINNIPEG

Out of town merchants will find it advantageous to buy from us. Our prices are as close as can be obtained in Canada. A Trial Order Solicited. Write for prices

## Hodgson, Sumner & Co.

IMPORTERS OF

**DRY GOODS  
MEN'S  
FURNISHINGS**

**DOMESTIC  
BRITISH  
FRENCH  
GERMAN  
AMERICAN**

Small Wares and Fancy Goods

347 and 349 ST. PAUL STREET, MONTREAL  
Represented in the West by

**A. C. McLAUCHLAN, WINNIPEG**  
Queen's Hotel

## Dressed Hogs Wanted.

We are open to buy any quantity of dressed hogs for which we pay highest market price. Quotations on application.

Send us your orders for prime Eastern Mutton, Lamb, Chickens, Geese and Turkeys. Prices and quality are right

Full stock of Hams, Bacon, Lard, etc.; our own curing; quality unsurpassed.

For sale cheap second-hand No. 1-2 Buffalo Meat Chopper, capacity 200 to 250 lbs. meat per hour; will run with 1 1/2 H. P. motor.

## P. GALLAGHER & SONS

Butchers, Pork Packers and Cattle Dealers

WINNIPEG.

**O**UR Mr. W. G. FOWLER and Mr. Wm. J. COOPER will be on the road shortly with a full line of samples of the

**CELEBRATED MALTESE CROSS AND LION BRANDS**

## FINE RUBBER FOOTWEAR

for fall trade. Wait until they call upon you with new lists and discounts before placing your orders. For fine finish, latest shapes, and durability, the Maltese Cross Brand leads all others.

**The Winnipeg Rubber Co. Ltd., 350 Main St., Winnipeg, Man.**

WESTERN SELLING AGENTS

A. A. ANDREWS, MANAGER.

**Manitoba.**

W. Cann will build a hotel at Sidney. S. J. Ham will open a blacksmith shop at Sidney.

W. Anderson is opening a lumber yard at Oakville.

Cunningham is opening in farm implements at Gladstone.

E. Chaplin has purchased the hardware business of A. Speers at Griswold.

W. H. Bolton, general merchant, Nainika, has assigned to C. H. Newton.

Ston Bros., general merchants, Roland, have assigned to C. H. Newton.

Downey & Collison have opened in hardware and lumber at Swan Lake.

O. McCutcheon has sold out his barber shop at Gretna to W. Allsborough.

J. A. Scott and D. G. Ennis, are opening in flour and feed business in Hartrey.

A. Brown is reported to have purchased the Queen's hotel at Rapid City.

Munson & Allen, barristers, Winnipeg, have taken E. W. Marlatt as a partner.

R. Street has been appointed agent for the Massey-Harris Company at Gretna, Man.

Walker & McNell, stationers and furniture dealers, Dauphin, have sold out to H. P. Macnoll.

McKay & Stevens have purchased the Dauphin Milling Co.'s flour and feed business at Swan River.

J. J. Walker has disposed of his stock of groceries at Dauphin to Wm. Philip, and retired from business.

The Great West Laundry Company, Limited, Winnipeg, made an assignment on Tuesday to C. H. Newton.

R. Hewitt & Co., tinsmiths, Pilot Mound, have gone out of business. Hewitt moves to Glasston, North Dakota.

F. A. Naismith has closed out his hardware business at Nesbitt and is devoting his attention to the implement trade.

Wm. Whan, formerly agent for the Massey-Harris Company at Gretna, will go into the machine business on his own account.

A Demison has bought the Transit hotel at Souris from J. Nation. Demison was formerly proprietor of the Leland hotel at Glenboro.

Wm. Garland, clothing, etc., Portage la Prairie, has taken in J. J. Garland as partner, and the firm will hereafter be known as Wm. Garland & Co.

The office of Shoults & Son, implement dealers MacGregor, Man., was damaged by fire on Wednesday. Shoults was badly burned while fighting the flames.

Jas. McDole, butcher, Cypress River, has sold out to Andrew Young. McDole is succeeding A. R. Stevens, lumber dealer at the same place, and Stevens moves to Winnipeg.

Duncan Buchanan has bought out the butcher business of Hamilton & Co., at Rapid City. Hamilton will resume business as horse and cattle dealer, with headquarters at Neepawa.

The Marshall-Wells Hardware Co. have purchased a building site on Bunrathyne avenue east, Winnipeg, adjoining the Merrick-Anderson building, and will erect a warehouse thereon.

Watt & Albert, manufacturers' agents, Winnipeg, have dissolved partnership. Karl K. Albert will continue the business. Mr. Albert established this business here previous to forming the partnership, handling Victor safes,

Wilson's computing scales, etc., and will again continue the business alone as when it was first started.

A short time ago we reported that H. J. Boyd, of London, Ontario, would open business in Winnipeg as manufacturers' agent in crockery, glassware, etc. Mr. Boyd has now received his full line of samples, and is ready for business, as his announcement in The Commercial this week shows. He has the sole agency for the west for several large American and British manufacturing concerns in glassware, pottery ware, lamps, etc. Sample rooms have been opened in the Ashdown block, Main street. Mr. Boyd is thoroughly familiar with this branch of trade, having been many years in the business, part of this period as manager for a wholesale house.

**Assinibola.**

J. W. Jackson will open in confectionery at Indian Head.

Miss Taylor is opening a millinery establishment at Saltcoats.

A German newspaper is to be started at Regina by — Bucz.

A. Urquhart, blacksmith, Fort Qu. Appelle, has rented his shop to Martin.

A. Knowles has moved his stock of general merchandise from Sintaluta to Wapella.

The Yorkton Enterprise has changed hands, Taylor & Gilbert are now the proprietors.

The annual meeting of the Regina board of trade was held on the 22nd inst. The reports showed a successful year in regard to the affairs of the board itself, and much good work done in the way of encouraging settlement of Regina district. New officers were elected as follows: President, G. Michaelis; vice-president, R. H. Williams; secretary, Wm. Traut; auditor, Robt. Rigby; council—F. N. Darke, John Dobbin, W. McCausland, C. J. McCusker, R. Martin, W. B. Pocklington, J. W. Smith, R. Spring-Rice, J. M. Young. A public dinner will shortly be held.

**Northwest Ontario.**

Navigation opening predictions at Port Arthur, based on the amount of ice in Thunder Bay, place the date at about May 1.

The retail clerks of Rat Portage have formed an association for their mutual protection and to further the early closing of stores.

E. S. Rutledge & Co., have started business at Fort William as manufacturers' agents and commission merchants. Rutledge was formerly town clerk.

Supplementary letters patent has been granted to the Rat Portage Lumber company empowering them to advance money on property in connection with their business.

J. K. Brydon, of Rat Portage, has had plans prepared for his new block which promises to be an important addition to Rat Portage business buildings. The main floor will be occupied by the Bank of Ottawa.

"My dear," said the chemist to his wife, just after he had refused her a new dress, "your tears do not move me. I have analyzed them. They contain nothing but a little phosphate of lime and some chloride of sodium. The rest is water."

**Manitoba Legislature.**

The Manitoba legislature opened on Thursday. In the opening address legislation is promised for the prohibition of the liquor traffic, so far as the powers of the provincial legislature will permit. A bill dealing with the liability of employers, and a bill providing protection for employees, were also announced.

**Tenders.**

Tenders are being called for the erection of a stone block at Rat Portage for J. K. Brydon, to be in by April 5.

The Winnipeg general hospital is calling for tenders for the supply of meat, bread, fish, ice, butter, groceries, drugs, medicines and milk. Tenders to be in by April 9.

Tenders will be received until Tuesday, April 10th, for the various works required in the erection and completion of a brick and stone residence, on Roslyn Road, Fort Rouge. J. H. G. Russell, architect, Winnipeg.

The Winnipeg board of works will call for tenders for the following sewer pipe: 1,000 feet, 6 inch; 500 feet, 9 inch; 3,000 feet, 12 inch; 250 junctions 12 inch; by 6 inch; 1,000 feet, 15 inch; 200 feet junctions, 15 inch by 6 inch; 600 feet, 18 inch; 50 junctions, 18 inch by 6 inch.

**Manitoba Wheat Stocks.**

There was 3,538,000 bushels of wheat in store at Fort William on March 24, compared with 2,399,000 bushels a year ago, 719,000 bushels two years ago; 3,665,000 bushels three years ago; 3,869,000 bushels four years ago, 910,000 bushels five years ago, and 2,205,000 bushels six years ago. Receipts at Fort William last week were 234,000 bushels and shipments were 146,000 bushels. Stocks of wheat at Fort William, Port Arthur, Keewatin, Winnipeg and interior country points were estimated approximately at 9,000,000 bushels, compared with about 9,250,000 bushels a year ago, 3,100,000 bushels two years ago, and 6,125,000 bushels three years ago, and 8,000,000 four years ago.

**Winnipeg Grain Inspection.**

For the week ending March 24 there were 427 cars of grain inspected, grading as follows:

Wheat—1 hard, 225, 2 hard, 61; 1 northern, 18; 2 northern, 3; 3 hard, 53; 1 frosted, 26, 2 frosted, 2, 1 rejected 3; 2 rejected, 5; no grade, 16; 1 white, 1; 1; 3 frosted, 1; condemned, 4 cars.

Oats—1 white, 3; 2 white, 7; 2 mixed, 5, feed, 2 cars.

**Live Stock News.**

A special cable from London dated March 24 states that there is a strong probability of South American cattle being debarred from entrance to British markets owing to prevalence of disease in Argentine herds.

The Ontario government has granted a concession to the Spanish River Pulp and Paper Co., giving the company the right to cut pulp wood on lands adjacent to Spanish, Vermillion and Onaping rivers and their tributaries for a period of 21 years, the company being required to expend \$500,000 and to turn out at least 20,000 tons of pulp and paper yearly.

# HOTEL LELAND



THE PALACE FAMILY AND  
COMMERCIAL HOTEL

Rates \$2.00 to \$4.00 per Day

Second to nothing in Canada.

**W. D. DOUGLAS, Manager.**

City Hall Square, Winnipeg.

# RAW FURS

Highest cash price paid for shipments of Raw Furs of all descriptions.

**M. F. ST. JOHN**

For M. Axelrad & Co., London, Eng.

**BUYER OF  
RAW FURS**

532 MAIN STREET, - WINNIPEG, MAN.

Write for Price List.

WE PLACED MORE

# FURS

in Manitoba and N.W.T. last season than in any previous season in our history.

Our representatives will call on you shortly with a specially choice range of samples.

**JAMES CORESTINE & CO. LTD.**

Representatives:

Man. & N.W.T.: W. G. RICKERT  
B. C. & N.W.T.: T. C. JOHNSTON

469 to 477 St. Paul Street,  
MONTREAL.

# The Jobin-Marrin Co.

**WHOLESALE GROCERS and  
COMMISSION MERCHANTS**

We are offering this week something new and good in the YRAST line. Put up by Gorman Eckert & Co, and known as **Mrs. Madden's**. Already our sales have been quite large. Mail orders given prompt attention.

We handle country produce to the advantage of our Customers.

Market Street East, - Winnipeg

# THOS. CLEARIHUE

BROOKVILLE, ONT.

Manufacturer of

# Gloves and Mitts

And Wholesale Dealer in

MOCCASINS AND SOCKS

WINNIPEG AGENCY:

285 MARKET ST

# T. & B.

# Plug and Cut Tobacco

Try the new fours. They are giving entire satisfaction. Pays the retailer a handsome profit.

THE GEO. E. TUCKETT & SON CO.  
LIMITED

HAMILTON

Tees & Perse, Agents, Winnipeg.

Be Progressive  
Increase Your Trade  
Satisfy Your Customers

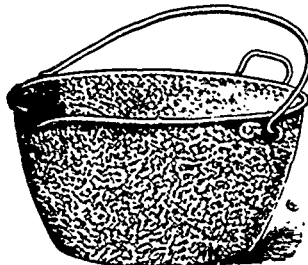
- By SELLING -

McCLARY'S

# STEEL ENAMELLED WARES

Made in four lines, viz

TURQUOISE, WHITE



# FAMOUS and IMPERIAL

These are the perfected production of long experience. There is none better made anywhere. Sold by all the leading dealers in Canada. Let us send you a sample order. We also carry large stocks in all the other various lines we manufacture.

PROMPT SHIPMENT.

**The McClary Manuf. Co.**

183-185-187 Bannatyne Ave. E.  
WINNIPEG.

London Toronto Montreal Vancouver

# BARLEY WANTED

We are now in the market for good brewing Barley. Farmers will do well to forward us samples.

# E. L. DREWRY

Redwood Factories

WINNIPEG, MANITOBA.

# S. A. D. BERTRAND

**ASSIGNEE and  
TRUSTEE**

For the Province of Manitoba, under the recommendation of the Board of Trade of the city of Winnipeg.

Insolvent and Trust Estates Managed with Promptness and Economy.

Special attention to Confidential business Enquiries.

King Street, Winnipeg, Man.

# W. M. FERGUSON

WHOLESALE

# Wines, Liquors and Cigars

8th ST., BRANDON

## MINING MATTERS.

## BRITISH COLUMBIA.

The concentrator at the St. Eugene mine will be started about April 15.

The Minto Mines, of Nelson, have been incorporated with a capital of \$1,000,000.

Shipments of ore from Rossland last week amounted to 48.5 tons. This is the lowest point touched since shipments began.

It is reported that the Hall mines' smelter at Nelson, will shortly be in operation again as a purely customs smelter. Gooderham and Blackstock are endeavoring to obtain possession of the plant for this purpose.

At a meeting of the directors of the Cariboo McKinnoy Mining Company, held last Saturday, a dividend of 1 per cent was declared for the quarter ending April 30. Heretofore dividends of 1 per cent have been paid monthly, but at the last annual meeting it was decided to make the payments quarterly in future. Instead of paying a dividend of 3 per cent for the quarter the directors decided to divert \$25,000 for the purchase of an additional twenty stamps, which will double the present capacity of the mill.

## NORTHWESTERN ONTARIO.

The Mohawk Mining Company, of Rat Portage, have been granted permission to increase their capital stock from \$495,000 to \$1,000,000.

A charter has been issued to the Anglo-Canadian Gold Estate Company by the Imperial government, and confirmed by the Legislature of Ontario, to carry on mining, etc., in Ontario. Alan Sullivan has been appointed the Canadian attorney of the English company.

The returns of the output of the Mikado mine, Lake of the Woods, for February, show that the mine worked 26 days, during which time 893 tons of ore were milled, the result being 613 ounces of gold, with a mint value of \$10,446.72. From the cyanide plant, which treated 479 tons, there was recovered 179 ounces, with a mint value of \$1,542.70. This makes the total production for the month \$11,989.42, or an average of \$461.13 gold recovered each working day.

## MISCELLANEOUS.

The Mining Stock Investors Company, Limited, has been formed under the Ontario Companies' act, with a capitalization of \$300,000, divided into 300,000 shares of \$1 each.

The Geological Survey of Canada's statement of the mineral production in the Dominion in 1899, shows a total of \$47,275,512. The value of the gold production shows a large percentage increase, in the Yukon and Ontario especially, the former having grown 60 per cent, and the latter over 58 per cent.

## Fur Trade News.

Mink has met with a steady sale through last year, and with the present high values of other goods, are reasonable and are likely to be largely employed.

Mink was among the few furs that showed a declining tendency at the March sales in London. This shows what a fickle thing fashion is. Mink has been popular for ladies neck wear, but is being supplanted by fox and other furs, with the result that these

## Advertise

Business for Sale,  
Partner Wanted,  
Etc., in The Commercial.



"Enclosed please find \$2.50 for advt. in your paper. The result was first class." So writes a merchant who advertised a business for sale in The Commercial. Price for sale or want advts. in The Commercial. It reaches nearly all business people in the West.



have advanced sharply while mink declined. Very high prices are being paid for silver fox skins for this purpose.

Experienced fur buyers look for a decline in prices next year, as they say that the present high level cannot be maintained. The March sales showed the highest prices for many years. When it is considered that furs bought from now on will probably not be sold to manufacturers till next year, it will be seen that the chances for making losses if present high prices do not continue are very great.

Receipts of skins of those varieties of fur bearing animals which subsist on rabbits are light this season owing to the scarcity of rabbits in the north. Trappers say that the number of rabbits is very small. The supply of rabbits ebb and flows like a tide, about seven years usually being consumed in performing the cycle. This has been the winter when according to such calculations the number is the smallest in the seven years.

## Smoking Stunts the Growth.

Whatever difference of opinion there may be upon the advisability of smoking for men, there is none as to its pernicious effect upon boys. It affects the action of the heart and reduces the capacity of the lungs. Young men who are being trained for athletics are not permitted to smoke by their trainers because, as they say, "It is bad for the wind." The argument that will appeal most forcibly to your boy is that smoking will stunt his growth. It has been proved that youthful smokers are shorter and weigh less than their comrades who do not smoke. Cigarettes are particularly injurious. Nicotine, the active principle of tobacco, is said by chemists to be next to prussic acid, the most rapidly fatal poison known. The tender tissues of a growing boy cannot absorb even a very small quantity of it without most injurious results. — February Ladies Home Journal.

## A Rare Opening.

GROCERY AND CROCKERY RETAIL BUSINESS FOR SALE.

This business was established back in the 70's, and is one of the most favorably known and widely connected in this line in Winnipeg.

It comprises a \$1,500 stock of groceries and shop fixings, and a \$2,000 stock of fine crockery and glassware.

Easy terms will be given to the purchaser of the stock and good will of this business. This is an excellent opportunity for a young man with a small capital to at once step into a running concern equipped with a steady run of reliable old-time customers.

Ill-health is the reason which occasions the retirement of the owner from this business.

For particulars, apply to Harold Turnbull, 532 Main street, Winnipeg, vendor's solicitor.

## Overall Clothing



The only factory in Canada making

Union-Made  
Overalls

They're made right. They're sold right. Ask for them. All good merchants sell them.

## The Hoover Mfg. Co. Ltd.

Man's Block

WINNIPEG.

## A Business Opportunity.

For sale a good general business and lumber yard, situated in the Northwest Territories on main line C. P. R. An excellent chance for a man with small capital. Reasonable terms given to reliable man.

The district is well and favorably known. Any one looking for an opening will please communicate with "J." care The Commercial, Winnipeg.

## Business for Sale.

In an old settled district on branch line C. P. R. A good clean stock of general merchandise, amounting to about \$4,000.00. Terms half cash, balance on time to suit purchaser. Apply M., care The Commercial, Winnipeg.

## Partner Wanted.

An active partner for "good paying" general store in Manitoba. Must have at least \$1,500 to \$2,000 in cash. This is a splendid chance for young man. Apply immediately to A. R., care The Commercial.

## Business for Sale.

A Lumber, Flour and Feed Business to dispose of on the C. P. R. main line west. Fine opening for anyone with sufficient capital. Business well established. Address P. O. Box 36, Grenfell, Assa., N. W. T.

## Business for Sale.

Flourishing meat business for sale in the town of Edmonton. Splendid chance for good man. Will have a railroad here coming summer. Good reasons for selling. Or would rent the place for 12 months, with right to buy if desired, at end of term. Apply M. E. A. T., care The Commercial, Winnipeg.

## Book-keeper.

Wants a steady situation as office manager, (British Columbia preferred). Thoroughly conversant with double entry, balance sheets and departmentising; also municipal and mining books. First-class references. Apply P. O. Box 170, Lorington la Prairie, Manitoba.

## To Let.

Immediately. Blacksmith shop and dwelling house, with tools. Apply to K. D., care The Commercial.

Our Mr. W. S. CRONE

Is now on his Spring trip through Manitoba, the Northwest, and British Columbia, carrying the finest collection of samples for import trade we have yet shown. Comprising:

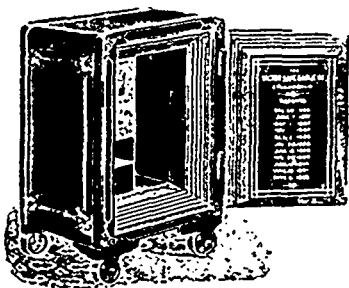
**DOLLS      TOYS      FINE LEATHER GOODS      PURSES**  
**WALLETS      ALBUMS**  
**CHINA      GLASSWARE      VASES      FIGURES**  
**PIPES      CIGARS      ETC.**

We recommend dealers in Holiday Novelties to wait and look over Mr. Crone's samples, as we feel assured they will not see during this year Their Equal for Extent and Variety.

**The H. A. NELSON & SON CO. Ltd.**

OFFICES AT  
 56-58 Front St. West, Toronto

**MONTREAL**



**ANOTHER  
 BARGAIN  
 IN SAFES**

FOR ONE WEEK  
 ONLY

**No. 3½ VICTOR SAFE**

FOR **\$54.00** CASH F.O.B. WINNIPEG

**\$60.00 on Time**

EASY TERMS      Now is your Time to buy a Safe

**DIMENSIONS No. 3½**

	Height	Width	Depth
OUTSIDE.....	31 in.	21 in.	21 in.
INSIDE.....	17 "	12 "	12 "

Weight, 650 lbs; 4 Tumbler Lock; Sub-Treasury 5x6x9, with Duplicate Flat Keys and Metal Cash Tray. Drawer and two Pigeon Holes under Sub-Treasury. Book space 19x9x12. Fine Flanged Door.

**KARL K. ALBERT**

GENERAL AGENT

268 McDermott Avenue - - WINNIPEG, MAN.

Specially Made For  
 Family Use. . . . .

**OGILVIE'S**  
 **FLOUR** 

Always ask for  
 OGILVIE'S

# FINANCIAL

## WINNIPEG BANK CLEARINGS.

Returns for the Winnipeg Clearing House for the week ending March 29, show as follows:

Week ending Mar. 29, 1900 ..... \$1,509,937  
 Corresponding week, 1899 ..... 1,445,879  
 Corresponding week, 1898 ..... 1,110,575

The monthly totals are as follows:

	1899.	1898.
January ... ..	\$7,083,052	\$6,347,168
February ... ..	6,209,471	5,617,340
March ... ..	6,766,094	5,968,000
April ... ..	6,016,431	6,240,000
May ... ..	7,472,855	8,083,364
June ... ..	8,211,716	7,396,799
July ... ..	8,169,595	6,316,238
August ... ..	7,995,291	6,180,385
September ... ..	8,281,159	6,414,551
October ... ..	12,089,000	9,347,692
November ... ..	11,435,219	11,553,669
December ... ..	12,966,905	10,708,731
<b>Totals ... ..</b>	<b>\$107,786,814</b>	<b>\$90,674,325</b>

1900.

January ... .. \$9,906,607  
 February ... .. 6,702,646

## BANK OF B. N. A.

In a previous number we gave the balance sheet of this bank to the end of last year. This week we produce an extended report of the proceedings of the yearly general meeting of the shareholders of the bank, which was held in London on March 6. The Bank of British North America has so extended its interests throughout Canada of recent years, that the report will be perused with interest by a large number of persons. The financial statement presented to the shareholders was a very satisfactory one, as will be readily observed by a glance at the report. The figures show a general expansion all through the list. The profit available for distribution showed a large increase, amounting to £15,000 compared with £38,000 a year ago. Of this profit the large proportion of £25,000 has been added to reserve. The chairman remarked in referring to this item, that they had decided to take advantage of their favorable position to add largely to reserve, which is no doubt a wise thing to do, as the recent strong tendency of interest rates, which has added so materially to bank profits of late, may not endure. At any rate it is certainly wise to strengthen the position of the bank so materially when such a favorable occasion for so doing has occurred. Reference was also made by the chairman to the profitable business secured by the branch at Dawson.

## FINANCIAL NOTES.

The rate of discount of the Bank of England remains unchanged at 4 per cent.

The rate of taxation in Toronto this year will be 19 1-2 mills, according to present calculations.

W. Macdonald, of the Imperial bank staff at Brandon, has been promoted to the management of the branch at Revelstoke, B. C.

Baxter and Lemieux were found guilty at Montreal on Sunday last on the charge of conspiring to wreck the Ville Marie bank. They are being sentenced to-day. Whether the prison-

ers will be tried on other charges against them is not yet known.

The new Dominion bank building, Winnipeg, will be ready for occupation by July 1. The offices in the basement will be ready by June 1.

During the time taken up in remodeling the Bank of Montreal building at Winnipeg the offices of that institution will be located in the Livingston block, at the corner of Portage avenue and Main street.

The Dominion government bank statement for the month of February shows continued prosperity as far as the circulation of monies is an evidence. Circulation increased during the month \$379,148, and was at the end of the month \$1,000,000 in excess of February, 1899. Current loans increased \$3,652,761 over January and \$37,850,238 over February a year ago. Call loans decreased considerably showing that banks are discouraging speculation as much as possible. Deposits on demand and notice increased \$2,634,685 over January and \$16,986,795 over February a year ago.

## ANNUAL MEETING

### Of the Bank of British North America— Chairman's Address

The yearly general meeting of the shareholders of this bank was held on Tuesday, March 6, 1900, at the offices, 3 Clement's lane, Lombard street, E. C. Mr. G. D. Whatman presided.

The secretary, Mr. A. G. Wallis, read the notice convening the meeting and the report and accounts were taken as read.

The chairman said: Gentlemen, I presume you will, as usual, wish the report and balance sheet to be taken as read, and if so, I have now to move their adoption and make a few remarks on the business of the bank during the past half year. The accounts show that the year 1899 was a more prosperous one than we have had for several years. The figures now before you, when compared with those presented this time last year, show in several items large increases. Our deposit and current accounts show an increase of over £125,000; the notes in circulation show an increase of £129,000, bills payable and other liabilities show an increase of over £700,000, and the total of our liabilities amounts this year to £6,826,42, against £5,628,981 — an increase of nearly a million and a quarter. Our assets to provide for these increased liabilities have, of course, increased in proportion. The premises account is also higher than last year by £3,650, principally owing to the necessary buildings at our new branches in Dawson, Atlin and Sydney. With regard to the profits, those who attended the meeting last September and heard Mr. Hoare's speech on that occasion may remember that he expressed a hope that, when we came to make up the accounts at the end of the year, we might see our way to an increase of dividend, and that we might also be in a position to increase our reserve fund. Both these anticipations have been realized. The result is that the profit available for distribution amounts to £54,000 against £38,000 this time last year, and we propose to apply this, after making certain special deductions, to which I shall refer

presently, in paying an increased dividend, and by adding the substantial sum of £25,000 to the reserve fund. Our reserve fund will then amount to £325,000. This increase needs, I think, no apology or explanation. A bank's reserves are the first objects of remark by those who wish to criticize its position. During the past series of lean years we have not only added very little to the reserve fund, but we have had to be content with a reduced dividend, and now that we are enabled after a good year to increase the dividend, I believe that you will agree with us that it is wise to take the opportunity of putting by a substantial amount, so that our reserves may keep pace with the large increase in our liabilities. This sum of £25,000 has already been invested in consols, and written down out of profits to 90, so that they may stand on the same basis as the rest of our consols which, as you are aware, were written down to 90 some time ago. Several circumstances have combined during the year to cause an increase of profit. Trade has been very active in all departments, which has led to the full employment of our funds at remunerative rates. The harvest was, generally speaking, a good one, the lumber trade is reported as being prosperous, and the mining industry has been developed to a great extent in many parts of the Dominion. The rates, too, obtainable for our money in New York, where we always keep large sums, have been higher, having ranged sometimes from 6 per cent. and upwards against 2 and 1-2 per cent. We have also obtained better rates in Canada, getting in many cases 5 and 6 per cent. against 4 per cent. The increase in our note issue, which I mentioned just now, has also been a source of profit, and at one time during the year the amount of notes in circulation amounted to the greatest on record in the history of the bank. You will see, therefore, that the conditions existing during 1899 were favorable for profit-making and it is with regret that I notice that the rates for money in America and Canada are already slipping back again, so that the present year does not begin so favorably as the period under review. During the last six months we have opened a new branch at Sydney, Cape Breton. There are large and important industries in coal and iron in that part of Nova Scotia which are likely to bring a considerable increase in the number of artisans and others into the district, and although banking competition is very keen there, as it is, indeed, all over Canada, we have thought it well, on the recommendation of our general manager, to open this branch. Of the branches which we have opened during the last few years that at Dawson City has been most successful, and has made good profits. The disastrous fire which occurred there last year did not affect our business as much as might have been expected, and I am glad to be able to report that we have suffered no loss from the second fire, which was reported as having visited the town a few weeks ago. I have now to draw your attention to the items in the profit and loss account, which are submitted for your approval. The first two relate to the bank's contributions to the officers' widows' and orphans', and the life insurance funds. Owing to an unusually large number of clerks having unfortunately died during the past year, our payments to the officers' life insurance fund have been exceptionally heavy; we have, therefore, thought it right to make

**LEADING COMMERCIAL HOTELS****WINNIPEG.****HOTEL LELAND**

Headquarters for Commercial Men

City Hall Square.

**RAT PORTAGE.****HILLIARD HOUSE**

LOUIS HILLIARD, Prop.

First class accommodation for Commercial Men

**SELKIRK.****CANADA PACIFIC HOTEL**

Best accommodation for Commercial Travellers

J. H. MONTGOMERY, Prop.

**TREHERNE.****LELAND HOTEL**

G. F. McBAIN, Prop.

First class accommodation for Commercial Travellers, etc.

**CRYSTAL CITY****THE MANITOBA HOTEL.**

SMITH BROS., Props.

Refitted and refurnished throughout. Commodious Sample Rooms. Everything first-class.

**HOLMFIELD****MANSION HOUSE.**

W. J. AWDE, Prop.

Accommodation First-Class in every respect.

**BOISSEVAIN****RYAN HOUSE**

Every accommodation for commercial travellers and the general public.

W. H. SAULTS, Prop.

**OAK LAKE.****HOTEL MANITOBA**

GEO. WRIGHT, Prop.

Newly remodelled and heated by hot air. Commercial headquarters. First-class Sample Rooms.

**VIRDEN.****BALMORAL HOTEL**

ALEX. PATTERSON, Prop.

Headquarters for Commercial Men.

**ELKHORN.****HOTEL MANITOBA**

W. J. DIXON, Prop.

New Building. New Furnishings. Furnace Heating. Acetylene Gas. First-class. Large Sample Rooms.

**FLEMING.****WINDSOR HOTEL**

W. Geo. CLEVERLY, Prop.

New Management. Rates \$1.25. Renovated and Refurnished. Commodious Sample Rooms. Heated by Hot Air. Livery and Feed Stable in connection. Inside Closet.

**WAPPELLA****HOTEL MUNDELL**

STUART MUNDELL, Prop.

Good sample rooms. Hot air furnace heating

**WHITEWOOD****WOODBINE HOTEL**

R. MAY, Prop.

First class accommodation for travelling public. Good sample rooms.

**REGINA****WINDSOR HOTEL**

D. D. McLEOD, Prop.

All modern improvements. Steam heating, etc. Good sample rooms. Rates \$1.50 to \$2.50 per day.

**MOOSE JAW****THE MAPLE LEAF HOTEL**

EDW. C. MATHEWS, Prop.

First class cuisine. The newest and best equipped hotel in the West. Heated by steam. Lighted with Acetylene Gas. Hot and cold baths.

**MEDICINE HAT****ASSINIBOIA HOTEL**

H. H. ROSS, Prop.

Commercial headquarters. Commodious sample rooms. Newly furnished bath rooms. Rates \$2.50 per day.

**STRATHCONA****HOTEL EDMONTON**

W. H. SHEPPARD, Prop.

First Class. Opposite Depot.

**EDMONTON****ALBERTA HOTEL**

JACKSON &amp; GRIERSON, Proprietors.

Sample rooms. Free bus. Livery in connection.

**MACLEOD****MACLEOD HOTEL**

R. S. IRWIN, Prop.

Good sample rooms and every accommodation for commercial travellers and the general public. Rates \$1.00 per day. Bus to and from all trains.

**PINCHER CREEK****BRICK HOTEL**

MITCHELL &amp; DOBBIE, Proprietors.

First-Class in every respect. Good accommodation for commercial men.

**CRANBROOK, B. C.****CRANBROOK HOTEL**

JAS. RYAN, Prop.

Large and convenient sample rooms and good accommodation for commercial men. Rates \$2 a day.

**FORT STEELE, B. C.****HOTEL WINDSOR**

Headquarters for commercial and mining men. All modern conveniences. Large sample rooms for commercial men.

**MOYIE, B. C.****THE CENTRAL HOTEL**

DESAULNIER &amp; BATLEY, Props.

Headquarters for commercial and mining men. Sample rooms. Rates \$2 per day.

**KASLO, B. C.****THE KASLO HOTEL**

COCKLE &amp; PAPWORTH

Free sample rooms. First-class in every respect. All modern conveniences.

**SLOCAN CITY, B. C.****THE ARLINGTON HOTEL**

GETHING &amp; HENDERSON, Props.

Free sample room.

**REVELSTOKE, B. C.****HOTEL VICTORIA**

JOHN V. PERKS, Prop.

Large and well lighted sample rooms. Hot air and electric bells and light in every room. Night Grill Room in connection for the convenience of guests arriving and departing by night trains.

**The John L. Cassidy Co**

LIMITED

339 and 341 St. Paul St., MONTREAL

Importers of **China, Glass and Earthenware, Etc., Etc.**

Communications addressed to A. C. Beach, their western representative, at the Leland House Winnipeg, or to Geo. L. Mitchell, local representative for Manitoba, at 312 McDermot Street Winnipeg, will receive prompt attention.

C. R. King, Victoria, is our local representative or British Columbia

**A. BURRITT & CO.****Dominion Mills****MITCHELL, ONT.**

Manufacturers of

**HOSIERY, MITTS, TUQUES****LADIES', MISSES' AND CHILDREN'S KNITTED UNDERWEAR, ETC. . . .**Dealers seeking merchandise that will **SECURE** that will **HOLD** and that will **INCREASE THEIR TRADE** in these lines should not fail to stock the **Dominion Brand**.

The Underwear is manufactured with the latest up to date machinery, and is unsurpassed in quality, fit and finish.

In ordering from these Mills you will get goods second to none in the trade.

**YOU WILL GET STOCK EQUAL TO SAMPLES.**You will get the **QUALITIES**, the **QUANTITIES** and the **SIZES** ordered in each line.You will get **FAIR PRICES**, **PROMPT DELIVERY**, liberal terms and honorable treatment.

I will call on the trade on C. P. R. in Manitoba, also in N. W. T., and B. C., and branch lines in good time for fall trade. Mr. D. Cameron will do the branch lines in Manitoba.

**J. RANTON,**

Agent, P.O. Box 628.

Sample Rooms, 502 McIntyre Blk., Winnipeg.

**For Rent.**

Farm, in Winnipeg district; also two farms for sale. Apply D. W. Buchannan, office The Commercial, Winnipeg.

extra provision for these payments. The other items relate to the subscriptions we have given in the bank's name to the Canadian war fund. You will not expect me, gentlemen, to dilate upon the war in South Africa, and I have no intention of doing so; but I think that as chairman of a meeting of shareholders of a Canadian banking company I cannot let the opportunity pass without expressing the admiration we all feel for the splendid help given by Canada to the Mother Country in her hour of difficulty.

Canadians, from the highest to the lowest have vied with one another in contributing assistance; the Dominion

has sent out several thousand troops, whom it would be hard to equal anywhere, and many more would have been willing to serve if they had been allowed to do so, thus supplying another striking proof, if one was wanted, of the unity of the empire, and illustrating a significant object lesson to outsiders. 'Conspicuous gallantry' were the words used by Lord Roberts the other day when describing the grand behavior of the Canadians in the field. We have thought it right, and I have no doubt it will meet with your hearty approval, to give 250 demars to the fund raised for the Canadian contingent in South Africa, and

£1,000 to the Canadian patriotic fund. We had the pleasure of a visit in the autumn from Mr. Stikeman, our general manager, who, as you know, we like to have over here every now and then so that we may discuss with him many points which can be better gone into personally than by correspondence. His visit this year was a particularly satisfactory one, and the more we see of him the more certain we feel that your business is most ably cared for, and that no one could have the interests of the bank more loyally at heart than he has. I regret exceedingly to have to report the death of our valued and esteemed colleague, Mr. Kingsford. He was a director of the bank for over thirty-three years, and took the greatest possible interest in it—his counsel was always wise, and we regret his loss very much. In accordance with the provisions of the deed of settlement, Mr. John Paton has offered himself as a candidate for a seat on the board, and he has the unanimous support of the directors. I shall presently have the pleasure of proposing his election as a director.

I now beg to move—"That the report and balance-sheet be received and adopted." (Applause.)

Mr. H. R. Farrer (director) seconded the resolution.

The retiring directors, Messrs. G. D. Whatman, H. R. Farrer and J. J. Cater, were re-elected, and Mr. John Paton was elected a director to fill the vacancy caused by the death of Mr. J. J. Kingsford.

The auditors, Messrs. Edwin Waterhouse and George Sneath, having been re-appointed, the proceedings terminated with a vote of thanks to the chairman and directors.

**Insurance Notes.**

J. Conell has been appointed secretary and manager of the Western Canadian Hail Insurance Company at Wawanesa, Man.

Mr. Fielding says that the Dominion government have under consideration a system of life insurance annuities as adopted in Britain.

Fred W. Pace has been appointed secretary of the Canadian Fire Insurance Company, of Winnipeg. He has been acting secretary for some time.

**Consider.**

Before you decide not to pay any more premiums on your policy of life insurance, it will pay you, and more than likely it will pay your family, if you will sit down by yourself for a quiet hour where you cannot be interrupted, and seriously think what it means to them and to you. To them it may mean all the difference between comfort and penury. To you it probably means the giving up of some personal enjoyment or the making of some effort in some direction that you will be all the better for making. You will have a higher respect for yourself, and you will think more of your family if you will do the manly thing by them and will make such sacrifices of personal pleasure or convenience as are necessary to enable you to give them reasonable protection.

The territorial assembly opened at Regina on Thursday.

A meeting of the King Mining Company shareholders will be held in Rossland on April 5 to empower the company to make a loan of \$15,000.

**Report of the Directors of the Bank of British North America, Presented at the Sixty-fourth Yearly General Meeting, Tuesday, March 6th, 1900.**

The profits for the half year, including £10,288 9s 1d brought forward from last account, were £61,753 19s 4d, out of which a dividend of 30s per share was declared, payable, free of income tax, being at the rate of 6 per cent per annum, and in addition £25,000 was added to the Reserve Fund, leaving a balance of £6,900 17s 6d to be carried forward.

The Court of Directors subscribed £250 (£51 7s 5d) to the Canadian contingent for service in South Africa, and £1,000 to the Canadian Patriotic fund.

The following appropriations from the profit and loss account were made for the benefit of the staff, viz.:

To the Officers' Widows' and Orphan's Fund .....	£ 416 7s 10d
To the Officers' Life Insurance Fund .....	1,355 0s 7d
London, February 26, 1900.	

**LIABILITIES**

	£	s.	d.	£	s.	d.
To Capital—						
20,000 Shares of £50 each, fully paid				1,000,000	0	0
To Reserve Fund .....				325,000	0	0
To Deposits and Current Accounts .....				2,908,814	19	4
To Notes in Circulation .....				430,729	14	2
To Bills Payable and Other Liabilities				2,110,827	4	10
To Rebate Account .....				15,048	1	7
To Profit and Loss Account—						
Balance brought forward from 30th						
June, 1899 .....	35,288	9	1			
Dividend paid 6th October, 1899 .....	25,000	0	0			
	10,288	9	1			
Net profit for the half-year, ending						
this date, after deducting all cur-						
rent charges and providing for						
bad and doubtful debts .....	51,465	10	3			
	64,753	19	4			
Deduct: Transferred to Reserve Fund .....	25,000	0	0			
Transferred to officers' Widows' and						
Orphans' Fund .....	416	7	10			
Transferred to Officers' Life Insurance						
Fund .....	1,355	0	7			
Subscription to the Canadian Contingent						
for Service in South Africa .....	51	7	5			
Subscription to the Canadian Patriotic						
Fund .....	1,000	0	0			
	27,853	1	10			

Balance available for April Dividend .....

36,900 17 6  
£6,827,320 17 5

**ASSETS.**

By Cash and Specie at Bankers and in						
Hand .....	797,538	7	3			
By Cash at Call and Short Notice .....	1,022,752	4	8			
				1,820,290	11	11
By Investments—						
Consols £175,000 at 90 .....	157,500	0	0			
Other Securities .....	91,937	14	7			
				249,437	14	7
By Bills Receivable, Loans on Security						
and Other Accounts .....				4,638,113	18	5
By Bank Premises, etc., in London, and						
at the Branches .....				119,478	12	3
				£6,827,320	17	5

We have examined the above balance sheet with the books in London, and the certified returns from the branches, and find it to present a true statement of the Bank's affairs.

EDWIN WATERHOUSE,  
GEORGE SNEATH

Auditors.

Of the firm of Price, Waterhouse & Co., Chartered Accountants.  
London, 22nd February, 1900.



# IT PAYS TO KEEP THE BEST

First-class grocers are particular about the quality of the smaller as well as the larger lines. Take salt for instance. A mere trifle in house keeping, but it must be good. If you do not keep a good brand your customers will get it elsewhere, and other things with it.

## Coleman's Salt is the Best

For Table and Household use. Pure, White, Crystalline. Sparkling, in first-class packages, each one guaranteed to the consumer.

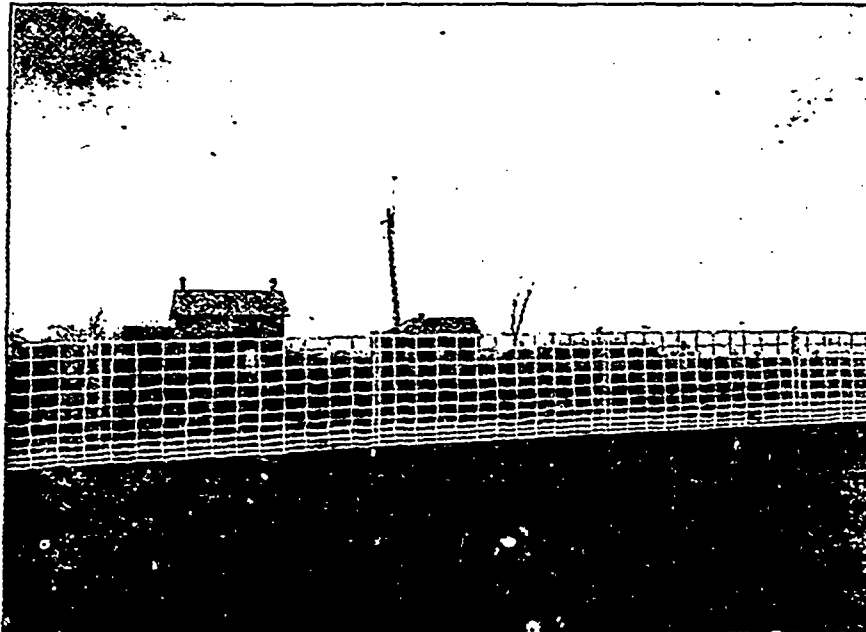
## Have You a Dairy Trade?

COLEMAN'S SPECIAL DAIRY SALT is the favorite with cheese and butter makers. Put up in bags, sacks and barrels

## Coleman's Common Salt

Is second to none. If you have not tried Coleman's Salt as yet, order a trial car through your Winnipeg wholesale grocer for shipment opening of navigation. North-West orders given special attention and despatch.

**G. B. THOMPSON, WHOLESALE AGENT, WINNIPEG**



## How Long Will It Last?

We don't know. The first was put up 13 years ago and is in perfect condition yet. We use special wire—none other like it. Page No. 11 Wire is as strong as common No. 9. Over 500,000 farmers using Page Fencing. They find it to be the best and cheapest. Send for our new price list.

**THE PAGE WIRE FENCE CO., Ltd.** WALKERVILLE, ONTARIO.

D. ROSS, 482 Main Street, Winnipeg, General Agent for the West.

P. O. Box 945

TELEPHONE 988

## NORTH-WEST PROVISION CO.

**WHOLESALE PRODUCE AND  
COMMISSION MERCHANTS.**

Send us your Butter, Eggs and other Produce. We return the highest market prices and charge 5 per cent. commission only. Cash on 1st and 15th of each month. Cold storage on premises.

Can supply you with Dairy Requisites, Green and Dried Fruits, Canned Goods, Cured Meats, Groceries, etc., at lowest prices. Send us a trial shipment and order.

128 and 130 Princess St., WINNIPEG

**HIDES      WOOL**

**NORTHWEST  
HIDE CO.**

Herman Telke, Mgr.

230 KING ST.  
WINNIPEG, MAN.

**FUR    TALLOW**

**SENECA ROOT**

**SHEEPPELTS**

## THE BUSINESS SITUATION

Saturday, March 31.

The weather has continued mild this week and spring trade has opened up considerably in consequence. The full tide will set in by Easter if the weather remains favorable. Wholesale trade is fairly active as far as groceries and provisions are concerned and clothing and foot and shoe travellers are starting out for fall and winter orders. Values remain firm and the general tendency of prices is still upward. Building operations will commence in earnest in a very short time. Contractors have been figuring this week on a number of large jobs, among them the new C. P. R. station and hotel. From present indications all classes of labor will be in good demand at wages at least as high as last year. Railway traffic is increasing and a large number of people have been brought in from the east and south who contemplate settling in the country. Bank clearings to Thursday were \$14,644 smaller than last week, but \$64,058 larger than a year ago. Mercantile collections continue very slow and there are a good many requests for renewals and extensions. Interest rates are a little easier if anything, and range from 6 to 3 per cent at the banks according to name.

## WINNIPEG MARKETS

Saturday, March 31.

## BUILDING MATERIAL.

Local white brick is quoted at \$11 per thousand. Stonewall rubble stone is quoted for spring delivery at \$3.50 per cord, Stonewall footings at \$3.50; Stony Mountain rubble at \$4.00; white lime at 20c per bushel, and grey lime Stony Mountain and Tyndall at 16c per bushel.

## DRUGS.

The only change to note is a decline of 5c per ounce in the price of cocaine. Business is fairly active and the general tone of the market firm. Collections are slow.

## BOOTS AND SHOES

With the advent of April 1, increased interest is being shown in this branch of trade. Travellers are now making up their samples for the road—that is those of them who are not already out, as a number have not waited for the first of April to start out. Prices are of course firm. Last season there was some irregularity in the market. Some large manufacturers had large stocks of leather have been exhausted bought before the big advance in leather, and they did not follow the leather market by advancing their boots and shoes in proportion. Their stocks of leather has been exhausted and there is now a general advance in leather goods for the new season, of about 5 to 10 per cent as compared with a year ago. Heavy leathers have advanced proportionately more than fine stock, consequently, heavy staple line of boots and shoes will show a greater advance than fine stock. Regarding styles for the new season, the tendency is in the direction

of a broad, comfortable shoe, for both men's and women's wear the narrow toes which were on the wane last year are now entirely out. Tan shoes promise to be in favor. Lace shoes find considerable favor for fine city trade, as compared with button boots, but the country belle still demands a button boot for her "Sunday" pair.

## FISH.

There is no change to note in prices. Demand continues good and supplies plentiful. We quote: Whitefish, frozen, per pound, 3 to 5 1-2c; pickerel, 3 1-2c; pike, 3c; trout, 10c; salmon, 12 1-2c, salmon, round cuts, 10c; halibut, 11c; salt whitefish, in half barrels, \$6.50; haddles, 7c; salt cod, 7c mackerel, fresh, 15c; fresh herring, 20c; Labrador herring, in half barrels, \$4.00, oysters, standards, in bulk, \$2.00; select, \$2.25.

## FUEL.

Stocks of wood in the city are now quite large and are being augmented every day. Teaming is now getting bad, however, and the movement will probably soon get down to supplying actual requirements. Dealers look forward to a good spring trade as the small traders will go out of business now that the snow is gone. Mild weather has curtailed the demand of heating coal to a large extent. For quotations see "prices current" page.

## GREEN FRUITS.

All kinds of green fruits hold firm at quotations of last week. Some extra fine apples are bringing as high as \$6 but the general range of prices is from \$3.50 to \$5.50 per barrel. We quote leading lines as follows: California navel oranges, \$4.25 per case for regular sizes; California seedlings, \$3.50; California lemons, per box, \$1.75; Messina lemons, \$1.75; bananas, \$3.00 to \$3.50; California grape fruit, \$5.00 per case; apples, winter, \$3.50 to \$6.00 per barrel; Cape Cod cranberries per barrel, \$2.00; coconuts, per dozen, 50c; Greno'le walnuts, 15c; Tarragona almonds, 15c; filberts, 12c; peanuts, green, 9c, roasted 12c, pecan nuts 15c per pound; maple sugar, per pound 11c; apple cider, 35c per gallon in barrels and all barrels; fruit cider put up in 20 and 30 gallon kegs, per gallon, 40c; California layer figs in 10 pound boxes, \$1.40; new Smyrna in glove boxes, \$2.00 per dozen; 10 lb. boxes, \$1.50 per box, dates, 7c per lb. in 1 lb. cartons, 10c; honey in 1-lb. glass jars, per dozen jars, \$2.50; American red onions, 3c per lb., jam, in 7 lb. pails, per dozen, \$6.50, in jars, 4 1-2 per dozen in barrels, per dozen, \$2.25.

## GROCERIES.

A fair active trade has been done throughout the week, and the jobbing trade has been looking ahead to the summer demand for heavy goods, and placing orders for fresh supplies to be delivered after the opening of navigation. Collections continue slow. New pack canned goods will cost more this year than they did at the opening of the 1899 season. The new prices for future delivery of Ontario fruits and vegetables show, for instance, an advance of 10c per dozen on tomatoes over the opening quotations of a year ago. Raspberries will cost according to the new quotations about \$2.35 per case to lay down at Winnipeg, whereas they are now being regularly sold to the retail trade at from \$1 to \$2.25. Canned meats are firm and likely to advance, as packers have put prices up again. Coffee quotations remain unchanged, but the market is very firm. Split peas have advanced about 10c per sack to job-

bers, owing to scarcity. This will probably affect the price to retailers at an early date. Dried fruits are firm and Valencia raisins becoming very scarce. Wholesale houses have been borrowing from one another to fill orders. It is expected that \$2.35 will be the lowest price for layers after this week. Woodenware manufacturers have notified the trade that hereafter corks for syrup pails will be charged extra. They have hitherto been supplied with the pails. This practically amounts to a slight advance. Spring orders for carlots of salt to be delivered after navigation is open have been coming in freely. Teas are very firm and recent purchases of Indias show an advance of 1-2c per lb. Low grade teas are especially affected by the advancing tendency of the market.

## HARDWARE.

The trade has been recently advised of an advancing tendency in the price of barbed wire and the present quotation of 4c per lb, f.o.b., Winnipeg, is likely to be exceeded shortly. There seems to be no prospect of a let up in prices this season so far. At the factories there has been an advance of about \$1 per ton. The present high cost of wire would justify jobbers in charging more than 4c per lb. here, but so far no action has been taken looking to an advance. Bar iron appears to continue very firm in price. In fact one eastern mill has refused to receive any more orders at present prices and another has notified the trade of an advance of 10c per 100 lbs. New stocks of shot shells are arriving and show an advance of 15c per hundred.

## RUBBER FOOTWEAR.

The first of April begins a new season for boots and shoes, rubber footwear, etc. In the case of rubber footwear there has been a good deal of speculation as to prices, but no announcement will be made until April 1. All the Canadian rubber shoe manufacturers are working in sympathy, and all have agreed to maintain prices, so that there is not likely to be any cutting of the new list rates. It is understood that the new list of rubber footwear will show an advance of about 5 to 7 per cent. This does not mean, however, that prices to the trade will be advanced to this extent. In fact, it is not certain that there will be any material advance in the cost of the goods, as the discount to be given from the list will fix the prices. The increase in the list price will enable retailers, who sell at list prices to make a better profit on rubber footwear, providing the discount is increased in proportion, which is expected will be done. The discount to be given, however, will not be announced until April 1, and in fact manufacturers do not meet until March 31 to decide on the discount.

## LUMBER.

An advance of 25 to 50 cents will be made in British Columbia lath. Owing to the high price of pine lath, there has been an increased demand for British Columbia lath, and some has been coming this way. Cedar shingles are firm, at \$2.35 delivered at 5c cent freight rate points in Manitoba, and there is some talk of a possibility of an advance during the present season.

## PAINTS, OILS AND GLASS.

Prepared paints have been advanced this week by Winnipeg houses 10c per gallon. This is due to the continued stiffness of raw material. Turpentine is also 1c per gallon dearer. Other

prices unchanged. Business is quiet for the moment as retailers are pretty well stocked up, having mostly all bought earlier in the year in anticipation of advances.

#### SCRAP.

The scrap market has developed no new features this week so far as prices are concerned. Heavy shipments of metals have been made to the south. White ledger paper scrap is marketable at 1c per lb. Quotations f. o. b. Winnipeg are: No. 1 cast iron from wrought and malleable \$14 per ton; No. 2, \$7 per ton; wrought iron scrap, \$8.50 per ton; heavy copper, 10c per pound; red brass 8 to 8 1/2c per pound; yellow brass, heavy, 7 1/2c per pound; light brass, 4 1/2 to 5c per pound; lead pipe or tea lead, 2 1/2c per pound; zinc scrap, 1c per pound; rags, country mixed, 50c; rubber, free from rivets, buckles and articles, 3c per pound; white ledger paper 1c lb.

#### STATIONERY AND PAPER.

There have been no wholesale advances in prices since early in March, when prices were advanced sharply on nearly all lines of paper, as reported in The Commercial of March 10. The Canadian manufacturers appear to have made a very rigid arrangement to prevent cutting in prices, and there is little opportunity to secure any advantage in buying inside of the prices quoted by the associated manufacturers. Canadian cover papers have not been materially advanced, but United States cover papers, which have a considerable sale in Canada, have been advanced sharply, about 20 per cent. Canadian news and book papers, bags, etc., remain at the advance reported on March 10. Cotton twine has been advanced 10 per cent., and wood butter plates are 20 per cent. higher. The advance on writing paper amounts to 10 to 20 per cent., according to brand, etc.

#### GRAIN AND PRODUCE.

**WHEAT**—There has been more animation and activity in the wheat markets during the last three days than for some time previously, and yesterday finished up with an advance in values of about 13-4c per bushel. Information and statistics have for the most part been of a thoroughly bullish character yet there is an undertone of strength which overlooks these, and raises the market in spite of them. Whether this hidden motive will develop into patent reasons for strength in the future of what time alone can show. In the meantime the strength and activity is seen more in the speculative market than in the demand for actual wheat or flour. The demand for actual wheat is on a moderate scale, yet the movement is considerable. Primary receipts in the States are daily overrunning the quantity received for corresponding days last year, but the exports from both coasts are considerably under last year. The American visible supply continues to increase slightly, the increase for last week being 162,000 bushels, compared with an increase of 213,000 bushels previous week and an increase of 75,000 bushels one year ago. The world's shipments are larger, 8,391,000 bushels, compared with 7,429,000 bushels previous week and 7,400,000 bushels a year ago. The Argentine shipments are very large, last week they were over 4,000,000 bushels, and this week they are 3,500,000 bushels. These are the largest weekly shipments ever made from Argentine and

are around 50 per cent. of the total world's shipments to Europe for the weeks noted. The world's visible supply according to Bradstreet's decreased last week 765,000 bushels compared to a decrease of 1,233,000 bushels previous week and a decrease of 798,000 bushels corresponding week last year. Reports on the growing crops are conflicting. Recent weather in western Europe does not seem to have been propitious, much cold and wet weather being reported as delaying spring work, and in France the damage by frost to the winter wheat is still remarked on. Yet the French minister of agriculture publishes this week his report showing the acreage under wheat for 1900 to be 16,869,509 acres compared to 17,097,837 acres in 1899, and estimating the probable production at 344,000,000 bushels compared to 366,000,000 bushels last year. This does not speak of any wide-spread damage, besides which there is a large stock of old wheat in France left over from the large crops of 1898 and 1899. In regard to the winter wheat in the States, very glowing reports come from the southwest and from Kansas, and indeed all the States except Ohio, Indiana and Michigan where the fields are so badly infested with the Hessian fly, the Cincinnati Price Current, a much respected authority, gives this week a fairly conservative report as follows, viz: "Week mainly favorable for wheat crop, outlook maintained where previously good, not improved where unfavorable. Winter wheat possibilities equal annual average production past ten years." The local market has been a little more active, influenced by the increased activity in the speculative markets, and the volume of business has been slightly enlarged during the last three days. The price of 1 hard spot Fort William closed at 66c last week and remained unchanged until Tuesday when 66 1/4c was obtainable. Wednesday saw an advance to 66 3/4c and Thursday to 67 1/2c, although 67 1/4c was best price the latter part of the day. Yesterday prices started at 67c and advanced to 67 1/2c, which was value at close of business. Some parcels for May delivery have been sold, the best figure being 69c, but there are few buyers for May delivery, shippers preferring to take the spot wheat at the difference in price. Two hard sells for 2 1/4c under 1 hard, 1 northern 2 1/2c under 1 hard; 3 hard is 5c under 1 hard; 1 frosted 5c and 2 frosted 5 1/2c, all in store Fort William.

**FLOUR**—The Ogilvie Company advanced its prices 5c per sack this morning. We quote: Ogilvie's Hungarian patent, \$1.80. Glencra, \$1.70; Manitoba Strong Bakers, \$1.40; XXXX, 1; Lake of the Woods patent, \$1.45; Strong Bakers, \$1.65. Modora, \$1.40; XXXX, \$1.20 per sack of 98 pounds, delivered in Winnipeg.

**MILLFEED**—Stocks are very light and not equal to the demand. The Ogilvie company's mill is not running hence a further scarcity. Prices have advanced \$1 per ton, making bran \$14.50 and shorts \$15.50.

**GROUND FEED**—Oat chop is worth \$2 1/2 per ton; barley chop, \$17; and mixed feed of barley and oats, \$20 per ton. Corn chop, \$18; oikake, \$27.

**OATS**—Business has been even quieter than usual. The end of the month finds dealers supplied for immediate requirements and not anxious to trade. Prices are 1-2 to 1c lower at 31 1/2c per bushel for No. 2 white and 30 1/2c

for No. 2 mixed, carlots on track, Winnipeg. No. 2 white in carlots at country points is worth about 25 1/2c.

**BARLEY**—Offerings are very light. Farmers seem to be feeding any they have. All the way from 30 to 36c per bushel is being quoted for carlots on track here, but in the absence of business prices are largely nominal. At country points buyers are offering 22c per bushel and sellers asking as high as 30c.

**CORN**—No. 3 corn is worth 43c per bushel in carlots on track here.

**WHEAT**—Buyers are paying farmers 54c per bushel at 15c freight rate points.

**FLAXSEED**—No movement. Worth \$1 1/2 per bushel to farmers.

**OATMEAL**—Manitoba meal is being offered at \$1.65 per 80 lb. sack to the retail trade by millers. For large lots the quotation is \$1.55.

**HAY**—The market is very dull. Fresh baled hay is worth \$5 to \$5.50 per ton; loose hay on the street, \$3 to \$4.

**BUTTER**—Creamery—The market is nominal at about 24c per pound.

**BUTTER**—About the only change to note in the situation is an increasing scarcity of choice, fresh butter and offerings of poor stock. It looks as if country merchants were using all fresh stock to supply their home trade and sending the old stock, which they have been holding, to the city for sale at whatever it will bring. Fresh butter should be getting more plentiful. Finest dairy, in tubs, is worth 20c per lb. here less freight and commission. Dairy prints 20c per lb. Rolls, 18 to 15c. Second grades 14 to 17c.

**CHEESE**—Stocks are low and the market firm. Small sizes are worth 14 to 14 1/2c per pound and large 14c.

**EGGS**—The egg market has slumped badly this week, and the highest figure now offered by commission houses is 12c per dozen for fresh case eggs, less expressage. This is a decline of 6c for the week. The market has been gradually going down since Monday. Some old eggs are still arriving for which only 6 to 8c is being paid less expressage.

**VEGETABLES**—Mild weather has stimulated deliveries of potatoes and prices have declined 5c per bushel since last Saturday. The top price now is fifty cents. Carlots continue to arrive from country points. From 25 to 30c per bushel is being paid for these at point of shipment. We quote: Potatoes, 45 to 50c per bushel; turnips 25 to 30c; carrots 50 to 60c; beets 40 to 50c; parsnips, 11-2c per lb.; dry onions, \$1.25 to \$1.50 per bushel; cabbage, 2 to 2 1/2c per lb.; celery, 75c per dozen; lettuce and parsley, 10c per dozen bunches; green onions, 25c per dozen; rhubarb 10c per lb.

**DRESSED MEATS**—Butchers are well supplied with fresh beef and have no trouble securing all they want. Cattle are in good shape for slaughtering and the absence of export demand leaves the supply practically at the disposal of butchers. Extra choice beef brings 7 1/2c in the city while it is 1-2c over our quotations of here before, but the general range of prices is from 6 to 7c. Veal is now offering more freely at from 8 to 9c per lb. Fresh mutton is obtainable in small quantities at from 9 to 10c per lb. Frozen mutton 8 to 9c. Hogs, weighing from 100 to 170 lbs., realize \$6.10 to \$6.50 per cwt from 170 to 250 lbs., \$6.50 to \$6.40, and from 250 upwards, \$6.50 to \$6.20.

THE COMMERCIAL MEN.

L. C. T. A.

Winnipeg council, No. 151, United Commercial Travellers of America, held its regular meeting Sat. night, Senior Counselor Wm. Hargreaves presiding. Supreme Secretary Charles B. Flagg, of Columbus, O.; Grand Counselor B. F. Holbrook, of Minneapolis, Minn., and Senior Counselor Wm. Almonr, of Minneapolis, council, were present. The following candidates, 27 in number, were initiated: J. A. Grundy, with Grundy Music Co.; J. B. Kilgour, with Kilgour, Rimer & Co.; Thos. G. Goddard, with Kilgour, Rimer & Co.; Geo. H. Stewart, with Stobart, Sons & Co.; Thos. Black, wholesale commission; W. G. McFarland, with Marshall Wells & Co.; A. S. Lock, with Sutherland & Campbell; A. P. Jeffrey, with Martin, Bolo & Wynne Co.; W. G. Shannon, with G. F. & J. Galt, G. F. Bryan, with G. F. Bryan & Co.; T. L. Waidon, with Clare Bros. & Co.; Jos. Maw, with Jos. Maw & Co.; Gordon McKenzie, with McKenzie Bros.; S. Mc Donald, with McDonald Bros.; D. H. Bam, with E. Nicholson; W. W. McMullen, with Singer Mfg. Co.; John Stevens, with Stevens Mfg. Co.; A. E. Shantz, with Donald Fraser & Co., all of Winnipeg; J. A. Banfield, with Hallwood Cash Register Co., Columbus, O.; J. E. Williams, with Geo. A. McGowan, Kingston, Thos. Conlin, with Wm. Croft & Sons, Toronto; J. D. Brock, with Todhunter, Mitchell & Co., Toronto; J. B. Warnock, with Lewis Bros. & Co., Montreal; J. B. Morris, with J. Hearst & Sons Co., Montreal; H. Potter, with Warder, Bushnell & Glesner Co., Springfield, O.; Malcolm Campbell, with Copp Bros & Co., Hamilton, John Maguire, with Scribner & Sons, New York City.

Thirty-four new applications were received and balloted upon, and there yet remain 46 applicants to be initiated. The membership contest closed with Capt. F. J. C. Cox the winner, with a total of 45 applications. Capt. W. A. Cavanaugh rolled up 35 applicants—a total of 81 new applications received within one month.

Arrangements are being made for one or two special Pullmans for the Duluth trip in Jun., to be added to a special train at Grand Forks, N. D., and those wishing to go are asked to send their names to F. J. C. Cox, secretary treasurer. Very low rates will be made, and citizens of Duluth are laying themselves out to entertain in a lavish manner. All members are requested to take their wives along, as special entertainment is being provided for the ladies.

The following officers were elected for the ensuing year: Wm. Hargreaves,

past counselor; Major Horac Wilson, grand counselor; John Graham, junior counselor; R. J. Salisbury, conductor; S. H. Roy, page; J. H. Fairchild, senior; and F. J. C. Cox, secretary treasurer.

After adjournment a banquet was served by Mrs. Hamble. After listening to speeches from visiting grand and supreme officers, and the newly initiated candidates, the meeting broke up by singing "America" and "God Save the Queen."

MOVEMENTS OF TRAVELLERS.

F. C. Shorey, was registered at the Leland, Winnipeg this week.

A. W. Lasher, an old timer on the road in the west, was at the Leland this week.

R. R. Gallagher and G. M. Newton of S. Greenshields, Son & Co., were in the city this week.

Walter Crone, of H. A. Nelson & Son, Co., who has been in Winnipeg for some days with his import order samples, went west on Tuesday.

W. G. Smith has engaged with H. G. Middleton & Bro., wholesale boots and shoes, etc., Winnipeg, to represent them on the road in Manitoba. Mr. Smith is a comparatively new man on the road, though he has made a trip or two in the west with hats and caps.

C. H. Miller, a well known western traveller, who has been making his trips throughout the west periodically for many years, is taking a new line this season. Mr. Miller will handle the samples of the Reliance Cigar factory, of Montreal. C. H. Nelson proprietor, and will represent this well known factory in Manitoba and the Territories.

The Montreal fur and hat trade is again sending its representatives in the west. The old firm of Jas. Coristine & Co., is already in the field with fall and winter samples. Mr. G. Rickert has commenced his labors and will cover the province of Manitoba and the Territories as far west as Moose Jaw, while T. C. Johnston is already on the ground further west and will do the country from Moose Jaw to the Pacific coast, both being amongst the Winnipeg arrivals from the east during the past week.

NOTICE

Notice is hereby given that application will be made to the Parliament of Canada, for an Act of Incorporation of "The Accident and Guarantee Company of Canada," for the purpose of carrying on a General Accident including Sickness, and Guarantee Insurance Business.

JOHN F. MACRIE,

Solicitor for Applicant.

Montreal, Jan. 11, 1900.

**POULTRY**—The market is practically bare of poultry. Turkeys are worth about 11c per lb.; ducks, 10c; geese, 9c, and chickens, 11c.

**GAME**—Rabbits are worth 7c each. Pigeons 20c per pair.

**HIDES**—Prices remain unchanged, but the market is weaker. Hides are coming in in bad shape and dealers are not anxious to buy at prices noted. Some half-shipped lots have been received this week. Country shippers take risks in shipping frozen hides. The old and dishonest trick of wrapping horns, hoofs, skulls, etc., in frozen hides is still practiced and injures business to a considerable extent. We quote: Frozen hides, 6 to 6 1/2c per pound, five pounds tare; No. 1 inspected hides, 7c; No. 2, 6c; No. 3, 5c; Branded hides grade No. 2, and bulls, No. 3; kip, 7c; calf, 8 to 8 1/2c; deerskin skins, 25 to 35c each; sheep skins, 40 to 50c each; horsehides, 50 to 75c each.

**WOOL**—We quote prices here 8 to 9c for unwashed fleeces.

**SENICA ROYF**—Market nominal at about 25c per lb.

**TALLOW**—Dealers are paying 31.2c for No. 1 tallow at country points. No. 2 is worth about 21.2c.

LIVE STOCK

**CATTLE**—Practically the only business done yet has been on butchers account. A few lots have been shipped east and some to British Columbia from western points, but the market is very quiet. Butchers are buying for the Winnipeg market on a basis of 41.1c off cars here and for a few choice lots 41.2c is reported to have been paid. At country points from 3 to 4c is the ruling quotation according to quality. Stockers are being bought at from \$13 to \$18 for yearlings, and \$22 to \$26 for two year-olds. These prices are exceeded in some cases for extra good animals. The outlook for doing a profitable export trade in Manitoba cattle this spring is not favorable, on account of the scarcity of ocean space and high ocean freights. On this account shippers are holding back.

**SHEEP**—A few sheep have been slaughtered for the local market, but beyond this the frozen mutton still fits the demand and there is no movement of sheep. Sheep and lambs are quoted at 43.4c off cars here. There will be some demand for fresh mutton for Easter. Some Manitoba fed sheep have been shipped to western points. Liberal stocks of frozen mutton are held here in cold storage.

**HOGS**—Receipts are fairly liberal. Choice hogs are worth \$4.75 to \$5.00, off cars here. Second grades 4 to 4 1/2c.

**MILCH COWS**—Very few offering. Quotations range from \$30 to \$45 each.

**HORSES**—Horses are coming forward freely for the spring trade. There has been quite a movement of carloads to country points. Most of the horses are from Ontario. Values remain very firm. Good work horses weighing about 1,300 pounds are worth here from \$150 to \$175 each; roadsters from \$150 to \$200 each, and extra heavy teams from \$350 upwards. Western horses of lighter weight run from \$120 to \$140 each, when latter broken.

Lumber dealers in the northwestern states have found their country yard demand a little disappointing this month, as weather conditions have not been favorable to retail trade.

IN STOCK IN MONTREAL

**LYSAGHT'S GALVANIZED POULTRY NETTING**

Sanderson's

**Cast Steel** For Tools

Henry Wright & Co.'s

**Anvils and Vices**

**A. C. LESLIE & CO., MONTREAL**

DINNER  
SETSTEA  
SETS

# BUYERS OF CROCKERY, CHINA, GLASSWARE, LAMPS AND LAMP GOODS ATTENTION

Having secured the Sole Agency in Western Canada for five of the largest American Factories and one of the best and most reliable of English Potteries, am now in a position to supply the Trade with their requirements at PRICES NEVER BEFORE OFFERED. All goods shipped direct from the manufacturers. Write for Catalogue and Price Lists.

You can SAVE MONEY on every purchase.

## H. J. BOYD

ASHDOWN BLOCK  
WINNIPEG

TOILET  
SETS

LAMPS

## BE NOT DECEIVED

From the same fine Cuban leaf, as fine Cigars can be made in Canada as in Havana. We have the mechanical skill to do it. The best best proof of this is

# LA TOSCANA

Made from the finest imported tobaccos by first class mechanics, and  
EQUAL TO ANY IMPORTED GOODS  
A fair trial will convince any smoker of this fact

## RELIANCE CIGAR FACTORY

C. H. NELSON  
PROPRIETOR MONTREAL

**BRITISH COLUMBIA**  
OFFICE OF THE COMMERCIAL

**Business in British Columbia.**

Vancouver, March 26.

Wholesalers report business dull, money tight and collections slow. The feature of the week is the slump in eggs, caused by the continued mild weather and the abundant supply of imported case eggs. Eggs for cooking purposes are retailing at 10 cents, while fresh laid eggs can be purchased at the stores for 20 and 25 cents. Fraser valley potatoes are offering more freely and are consequently cheaper this week.

The Kootenay trade is still demoralized owing to the eight-hour law. Commissioner Clute is at Rossland, making a final effort to arrive at some means by which the difference between the mine owners and miners can be adjusted. The Hon. Smith-Curtis, the new minister of mines, is in Rossland co-operating with Mr. Clute.

The committee chosen by the salmon canners combine to allocate the season pack and decide upon the output of each company have visited all the canneries and collected the data on which they will base their calculations. The price to be paid for fish will not be decided upon until the last moment. In the meantime the fishermen have also combined. The Japanese being allowed to join the union to strengthen the combination. As for the canners they say they will offer a fair price for the fish, and if this price is not accepted they will be content with a small pack and use their own fishermen, (each cannery is allowed a certain number of licenses) to supply them with fish.

**British Columbia Markets.**

(All quotations, unless otherwise specified, are wholesale for such quantities as are usually taken by retail dealers, and are subject to the usual reductions on large quantities, and to cash discounts.)

**PRICES AT VANCOUVER.**

By wire to The Commercial.

Vancouver, March 31.

The only change this week is in butter, California creamery being quoted 1c lower. Potatoes firmer.

**BUTTER**—Local creamery, 51c. California is selling at 28 to 29c. Fresh dairy, 20 to 27c.

**EGGS**—Fresh local, 20c; eastern case eggs, 10 to 15c, as to quality. Oregon eggs, 21c per doz.

**CHEESE**—15c.

**GREEN FRUIT**—Oranges, n. vel, \$2.50 to \$3.00; seedlings, \$2.00; California lemons, \$3.50 to \$4.00; bananas, \$2.75.

**MEAL**—Rolled oats, 90 lb. sack, \$2.50; two 45 lb. sacks, \$2.60; four 22 1/2 lb. sacks, \$2.80; ten 7 lb. sacks, \$2.50; oatmeal in 10 lb. sacks, per 100 lbs., \$3.25; in 50 lb. sacks, \$3.00 per 100 lbs.

**FLOUR**—Delivered B. C. points—Manitoba patent, per barrel, \$1.60; strong bakers', \$4.30; Oregon, \$4.50 per barrel.

**GRAIN**—Oats, \$24 to \$25 per ton; wheat, \$25.

**CURED MEATS**—Hams, 14 to 14 1/2c; breakfast bacon, 13 to 13 1/2c; backs, 12 1/2c; long clear, 10c; rolls, 12 to 12 1/2c; smoked sides, 11c.

**LARD**—Tins, 10c per lb.; in pails and tubs, 9 1/2c.

**FISH**—Flounders, 3c; smelts, 5c; sea bass, 4c; whiting, 5c; soles, 6c; halibut, 6c; salmon, 9c; hloaters, 7c; cod, 6c per lb.; crabs, 60c per dozen.

**GAME**—Mallards, 70c; pintail, 40c teal, 25c; wildgeon, 40c per pair.

**POULTRY**—Turkeys, 14c; geese, 12c.

**VEGETABLES**—Potatoes, Fraser river stock \$15 to \$18 per ton; Ashcroft potatoes, \$20 to \$22 ton; cabbage 2 1/2c lb.; carrots, turnips and beets, \$12 per

ton; red onions, 1 1/2c per lb., silver-skins 2 1/2c.

**FEED**—National mills chop, \$25 per ton, bran, \$20; shorts, \$22; oil cake meal, \$35 ton, f.o.b. Vancouver, including duty paid on imported stuff.

**HAY**—Per ton, \$16.

**DRESSED MEATS**—Beef, 8 1/2 to 9c; mutton, 11c; pork, 8 1/2 to 9c; veal, 10 1/2 to 11c per lb.

**LIVE STOCK**—Stoers, \$1.75 to \$4.00 per 100 lbs.; cows, \$3.25; sheep, \$5.60; per 100 lbs.; hogs, 5c per lb.

**DRIED FRUITS**—Apricots, 17c peaches, 10 to 12c; pitted plums, 12c; prunes, French 5 to 7 1/2c lb.; London layer raisins, \$2.00 to \$2.25 box; Italian prunes, 6 to 8 1/2c lb.; sultana raisins, 2 crown 8, 3 crown 8 1/2c, 4 crown 9c; dates, 9c; black figs, 6c; white figs, 9 1/2c; layer figs, 10 lb. box, \$1.45; silver prunes, 9 1/2c; quartered pears, 11 1/2c; half pears, 12 1/2c; nectarines, 14c; Valencia raisins, 7 1/2c; sultanas, 11 to 14c; blackberries, 16c; raspberries, 25c; seeded raisins, 9 1/2c.

**NUTS**—Almonds, 16c; filberts, 12 1/2c; peanuts, 9c; Brazil 12 1/2c; walnuts, 13c lb.

**SUGARS**—Powdered, icing and bar, 6 3/4c; Paris lump, 6 1/4c; granulated, 5 1/4c; extra C, 4 5/8c; fancy yellows, 4 1/2c; yellow, 4 3/8c lb.

**SYRUPS**—30 gallon barrels, 2 1/4 lb.; 10 gallon kegs, 2 3/4c; 3 gallon tins, \$1.75 each; 1 gallon tins, \$4.60 case of 10; 1 1/2 gallon tins, \$5.25 case of 20.

**TEAS**—Congo, Fair, 11 1/2c; good, 18c; choice, 29c; Ceylon and India, fair, 20c.

**HARDWARE**—Bar iron—base, \$3.50. Horse shoe nails, discount, 40 per cent; horse shoes, keg, \$5.00. Wire nails—base price, \$4.50; cut, \$3.75. Rope, Manila, 16c. Boiled oil, 75c. White lead, \$7.50. Putty, \$3.50. Barbed wire, \$4.75 per 100 lbs.

**PRICES IN THE KOOTENAY.**

Nelson, March 31.

**Cheese**—Large, 15 1/2c; small sizes, 16c per lb.

**Eggs**—Fresh Washington eggs, 20c.

**Oats**—Per ton, \$27.

**Millfeed**—Bran, \$20; shorts, \$22 per ton.

**Flour**—Manitoba patent, \$1.80.

**Hay**—Per ton, \$28.

**Potatoes**—Per ton, \$23.

**British Columbia Notes.**

James Haddock is opening in small wares at Ashcroft.

The British Columbia provincial elections will take place on June 15.

Rendell & Co., dry goods, Greenwood, will open a branch at Phoenix.

R. Howson & Co., furniture, Revelstoke, are opening up a branch in Ferguson.

Thos Cowan, of Wellington, will open a general store at Nanaimo on April 1.

Geo. Bell & Co., have bought out Hyde, Tiltsworth & Co., produce and commission, Nelson.

W. W. Moore has commenced business as commission broker and manufacturer's agent at Vancouver.

The Grand Forks Lumber, Sash and Door Company have been incorporated with a capital of \$15,000.

The British Columbia Manufacturing Co. has been incorporated at New Westminster with a capital of \$25,000.

Wallace Bros., Vancouver, have purchased the Claxton salmon cannery on the Skena river and will operate it this year.

The Peoples' Steam Laundry Company of Grand Forks has been incorporated with a capital stock of \$10,000.

The Victoria board of trade has passed a resolution urging the Dominion and provincial governments to grant subsidies to secure an extension

of the Esquimalt and Nanaimo railroad to the northern end of Vancouver island.

Two men were instantly killed and a building wrecked by an explosion of powder in the packing house of the Ontario Powder company at Nelson on the 29th inst.

The Slave Lake Powder Company, Limited, is being organized at Vancouver for the purpose of developing water power at Slave River Falls, and transmitting it by means of electricity to Vancouver, a distance of 42 miles. J. B. Ferguson is managing director.

The town of Kuskanook was almost wiped out by fire on the 21st inst. Several hotels and Fraser's and Wright's stores were destroyed. The loss is placed at \$15,000. No insurance. Kuskanook is a little town on Kootenay Lake at the northern end of the Beddington railway.

**British Live Stock Market.**

London, March 26.—Considerable strength has developed in this market since this day week, as prices show an advance of 1c for cattle, and 1 1/2c to 2c for sheep. Trade to-day was firm with a good demand, and choice States cattle sold at 13c; Argentine at 12c, and Argentine sheep at 15c to 15 1/2c.

Liverpool, March 26.—This market was also much stronger for Canadian cattle, and prices are 1-2c higher at 12c.

A private cable received from Liverpool quoted choice Canadian cattle at 11 1/2c to 12c; sheep at 15c, and lambs at 17c.

**Western Business Items.**

The Hudson's Bay Company have decided to close their branch store at Morden, Man.

Hiram Jekling has bought out the lumber business of J. E. Campbell at Carman, Man.

Postill & Wright, general merchants, Red Deer, Alberta, have dissolved partnership, Postill continues the business.

J. W. Lord, who has been for a number of years accountant and office manager for Thos. Ryan Winship, has been appointed agent for Manitoba and the Northwest Territories as far west as Medicine Hat, for the Ottawa Fire Insurance Company of Ottawa, Ont. This company comprises among its shareholders and officers some of the leading business men of Ottawa. Mr. Lord commences business on Monday in the McIntyre block. He proposes also to give attention to assignee business, for which his experience in mercantile pursuits should thoroughly fit him.

The iron will of a selfish man is undoubtedly made from common pig iron.

**Ottawa Fire Insurance Co.**

OF OTTAWA.

Authorized Capital - \$1,000,000

A. B. POWELL, General Manager. CHAS. MAGEE, President

JOHN W. LORD, Agent for Manitoba and the Northwest.

ROOM 212 MCINTYRE BLK., WINNIPEG P. O. Box 276.

Good live agents wanted in all principal centres.

# TO INSURE

**P**ERFECT SATISFACTION to your Customers, buy the old reliable line of RUBBER SHOES. Best Wearers offered to the Trade.

Our Novelties 'his season are

## ARMOR PROOF DUCK BOOTS

N. B.—Travellers will call on you shortly.

# Canadian Rubber Company

OF MONTREAL

W. ANTLIFF, Manager Winnipeg Branch

## California Fruits

ORANGES, LEMONS now in season. CHERRIES, PLUMS, APPLES, PEARS, etc., by-and-by. We fancy we can do as well by you as other people. For fruits write our VANCOUVER house

VANCOUVER, VICTORIA  
NELSON, REVELSTOKE

**F. R. STEWART & CO.**

# RAT PORTAGE LUMBER COMPANY

LIMITED

Manufacturers of

**LUMBER, LATH, SHINGLES**

**SASH, DOORS** and all kinds of **WOODWORK**

Head Office and Mills at Rat Portage, Ont.

Branch, Point Douglas Ave., Winnipeg

**TORONTO WHOLESALE TRADE.**

Special to The Commercial.

Toronto, March 31.

**Dry Goods**—More active and more buyers are here. House sales are larger. Shipments are also large. Further advances have taken place in Canadian goods this week. Three or four of the big mills have announced advances of 10 per cent. Goods affected by the advances include sheetings, pillow cottons, all colored printed goods, printed wrapperettes, skirtings and moleskins. Linings and satens are also up, advances ranging up to 10 per cent. All Canadian fabrics are very strong. Demand for goods was never so active, largely owing to the excellent quality and difficulty of getting prompt delivery of British lines.

**Hardware**—Freer movement of all sorts from stocks. Few prices changes. Current trade is better. Scrap lead 1-4 cent higher. Sisal rope 1-2 cent lower. Scrap iron 5 cents per cwt. dearer.

**Groceries**—Trade is improving and prices steady. More canned goods are moving and prices are firmer. Corn is worth \$1.05 to \$1.10; tomatoes, 90 to 95c; peas from 75c up. Currants and Tarragona almonds are dearer. Spot prices are firmer. Valencia raisins are getting scarcer here. All smoked and salted meats pork and lard are 1-2 cent dearer.

**TORONTO GRAIN AND PRODUCE.**

Special to The Commercial.

Toronto, March 31.

Grain deliveries are light. Demand for wheat better. Ontario and Manitoba are 1-2c higher. Flour is steady. Better wheater and 3c under a week ago. Receipts of butter have been larger. Eggs are 1c lower. Quotations are—

Flour—Manitoba patent, \$3.90 to \$4.06; Manitoba bakers, \$3.60, car lots, Ontario roller, \$2.55 to \$2.80 per barrel for car lots at country mills.

Wheat—Ontario winter wheat 67 1-2 to 68c for carlots at country points; Ontario spring, 65 1-2c at eastern Ontario points, No. 1 hard, 59c North Bay.

Oats—26 1-2 to 28c at country points for carlots, as to quality and freights.

Barley—No. 2, 42 to 43 1-2c, country points.

Millfeed—Shorts, \$16 to \$17 per ton; bran, \$15.00 to \$15.50 per ton for cars at country mills.

Oatmeal—\$3.20 in bags per barrel, and \$3.30 in wood for carlots, Toronto.

Eggs—New laid, 13 1-2c; fresh held, 11c.

Butter—Large dairy rolls, 17c; creamery, tubs and prints, 22 to 23c.

Cheese—13 to 13 1-2c for job lots to the local trade.

Hides—9c for No. 1 cows; No. 1 heavy steers, 9 1-2c; country hides 1 1-2c under these prices; sheepskins and lambskins, \$1.25 to \$1.40; calfskins, 11c for No. 1, and 10c for No. 2; tall low, 5 3-4 to 6c.

Wool—Washed fleeces, 19c; unwashed, 11c.

Beans—\$1.85 per bushel for hand picked.

Dried Apples—5 1-2c for round lot; evaporated, 7 to 7 1-2c.

Honey—Held at 9 to 10c in bulk.

Poultry—Chickens, 50 to 85c per pair; turkeys, 13c per lb.; geese, 7 to 8c; ducks, 60 to 80c per pair.

Potatoes—Steady at 38 to 39c per bag for car lots.

Hogs—Dressed hogs, \$6.50 to \$7.00

per 100 pounds for car lots on track, as to grade.

Seeds—Timothy, \$2.50 to \$3.50 per 100 lbs.; red clover, \$5 to \$6; alsike, \$4.20 to \$7

**TORONTO LIVE STOCK MARKET**

Special to The Commercial.

Toronto, March 28.

Receipts at the semi-weekly market yesterday were 1,000 cattle, 150 sheep and lambs, and 2,200 hogs.

**Export Cattle**—Prices ranged from \$4.60 to \$4.80 per cwt. for heavy cattle and \$4.40 to \$4.60 for light. An odd lot brought a trifle higher than market prices. The larger part of the offerings sold at \$4.50 to \$4.65 per cwt.

**Export Bulls**—Light offerings met a moderate demand at \$3.80 to \$4 for heavy stock and \$3.50 to \$3.75 for lighter grades.

**Butchers' Cattle**—Prices were weak and competition not keen. Choice cattle sold at \$4 to \$4.25 per cwt, good loads at \$3.50 to \$3.90 per cwt, medium to mixed lots at \$3 to \$3.50 per cwt, and common cows at \$2 to \$2.50 per cwt.

**Stockers**—Better demand at \$3 to \$3.65 per cwt.

**Sheep**—Stock sold out at weaker prices. Export ewes sold at \$3 to \$3.50 per cwt and bucks at \$2.50 to \$3 per cwt. Lambs \$4 to \$5.50 per cwt. Wethers and ewes, \$5.50 to \$5.75.

**Hogs**—Advanced to \$5.85 to \$6 per cwt for selections of 160 to 200 lbs natural weight and \$5.50 per cwt for thick and light fat.

**FRIDAY'S MARKET.**

Toronto, March 31.

At the semi-weekly market yesterday receipts were 58 carloads cattle, 50 sheep and lambs and 2,000 hogs.

Expert cattle sold firmer, \$4.90 being top price. Butchers' cattle steady at Tuesday's prices. Hogs ruled firmer and choice bacon continued to bring \$6 per cwt. Thick and light fat hogs, \$5.50.

**MONTREAL GRAIN AND PRODUCE.**

Special to The Commercial.

Montreal, March 31.

Oat market active at 3-4 to 1c decline for oats in store. Flour is unchanged. Feed very firm. Bran scarce. Meal quiet. Hides steady. Eggs unchanged. Butter has declined 2 to 3c for dairy and 3 to 4c for creamery, on increasing receipts. Cheese is steady and quiet. Beans are steady. Very little doing in dressed poultry and meats. Potatoes have declined owing to heavy receipts, and are now 7c per bushel below prices of early in the week.

Oats—30 to 30 1-4 in store, 32 1-4 to 32 1-2c afloat, May.

Barley—No. 1, afloat, May, 51c; No. 2 afloat May, 49c.

Flour—Prices to the trade delivered are: Manitoba strong bakers, \$3.25 to \$3.60; Manitoba patents, \$3.70 to \$4.00.

Millfeed—Bran, \$17 per ton; shorts, \$18 including sacks.

Oatmeal—Rolled oats, \$3.40 per barrel on track and \$1.65 per sack.

Hides—No. 1 green city hides, 9c; No. 2, 8c; No. 3, 7c; No. 1 buffs, 10c; Calfskins, No. 1, 11c; No. 2, 9c; lamb skins, 10c; tallow, 4 to 4 1-2c.

Eggs—Strictly fresh, 14 to 15c.

Butter—Choice fresh dairy, 18 to 19c.

Butter—Choice creamery, 20 to 21c per lb.

Cheese—Finest white, 12 1-2 to 13c per lb.; colored, 13 1-4c.

Beans—\$1.70 to \$1.85 per bushel, as to quality.

Potatoes—35 to 38c per bag on track.

Dressed Poultry—Turkeys, 9 1-2 to 10 1-2c chickens, 7 1-2 to 8 1-2c; ducks, 7 to 8c, geese, 6 to 7c.

Dressed Meats—Beef, jobbing lots, front quarters, 3 1-2 to 5c per pound hind quarters, 5 to 7c; mutton, 6 to 6 1-4c, mutton, 4 1-2 to 5c; hogs, \$7.00 to \$7.50.

**MONTREAL LIVE STOCK PRICES.**

Special to The Commercial.

Montreal, March 27.

Receipts of live stock at the East End Abattoir market yesterday were 500 cattle and 75 sheep and lambs.

Advices from Ontario and Quebec indicate that cattle will be more plentiful this season than last. The demand from butcheries for all suitable stock was good, and a fairly active trade was done. Choice steers sold at 13-14 to 5c; good at 4 1-4 to 4 1-2c; fair at 3 1-2 to 4c; and common at 2 3-4 to 3 1-4c per pound, live weight. Sheep sold stronger with a good demand at 4 to 4 1-2c per pound, live weight. Spring lambs ruled higher at 8 1-2 to \$6 each.

At the Grand Trunk stock yards at Point St Charles there was a fair supply of live hogs for which the demand was good, and sales were made at 5 1-2 to 5 3-4c per pound live weight, weighed off cars.

**THURSDAY'S MARKET.**

At the East End Abattoir yesterday receipts were 500 cattle and 1,500 hogs.

The cattle market was dull and prices lower. Choice sold at 4 to 4 3-4c per pound, fair to good, 3 1-2 to 4c; other grades, 2 1-2 to 2 3-4. Sheep and lambs, unchanged from Tuesday. Hogs, \$5.50 to \$5.70 per cwt.

**LONDON SUGAR MARKET.**

Special to The Commercial.

London, March 30.

Root quiet, March and April 10s 11-2d.

**LIVERPOOL CATTLE MARKET.**

Special to The Commercial.

Liverpool, March 30.

The cattle market is unchanged at 11 to 12c per pound, estimated dressed weight.

**LIVERPOOL CHEESE MARKET.**

Special to The Commercial.

Liverpool, March 30.

Cheese is now quoted at 59s 3d for white, and 62s for colored.

The Dominion Commercial Travelers Association has again expressed itself in favor of a Dominion insolvency law.

Tenders are wanted for the erection of a brick vincer school house at Fairmount, Man. Ed. McGill, Secy.-Treas., Basswood, Man.

Stinson school district wants tenders for the erection of a brick school house. Figures to be sent to D. W. Stinson, Carberry, Man.

Karl K. Albert, manufacturers' agent, Winnipeg, is offering some special snaps in safes, as per his announcement on another page this week.

John W. Lord, accountant for Thos. Ryan, wholesale boots and shoes, Winnipeg, who is going into business on his own account, was presented with a gold-headed cane, accompanied by a suitable address, by Mr. Ryan and his employees.



## New York Wheat.

New York, March 26.—Wheat, May opened 72 1-2c, closed 72 1-4c. July opened 72 5-8c, closed 72 3-8c a.

New York, March 27.—Wheat, May opened 72 1-4c, closed 72 1-2c b.

New York, March 28.—Wheat, May opened 72 5-8c, closed 73 1-2c b. July opened 72 3-4c b, closed 73 5-8c a.

New York, March 29.—Wheat, May opened 73 5-8c b, closed 73 5-8c b. July opened 73 1-2c, closed 73 3-8c b.

New York, March 30.—Wheat, May opened 73 3-8c b, closed 74c a. July opened 73 5-8c, a, closed 74c.

New York, March 31.—Wheat closed at 73 7-8c for May and July options.

## Chicago Board of Trade Prices

Chicago, March 26.—Wheat, May opened 65 5-8c, closed 65 1-2c b. July opened 66 5-8c, closed 66 1-2c. Corn, May opened 37 3-4c, closed 38 1-8c. Oats, May opened 38 1-8c, closed 38 3-8c b. Lard, May opened 21 1-8c, closed 21 1-8c. Pork, May opened \$11.70, closed \$11.92 1-2. July opened \$11.50, closed \$11.67 1-2. Ribs, May opened \$6.17 1-2, closed at \$6.25 b. July opened \$6.40, closed \$6.35. Flax, May opened \$6.40, closed \$6.40. July opened \$6.30, closed \$6.40 a. Flux, cash \$1.65. May \$1.65. Sept. \$1.14 b. Oct. \$1.16 1-2.

Chicago, March 27.—Wheat, May opened 65 3-8c, closed 65 3-4c b. July opened 66 1-2 to 5-8c, closed 66 7-8c a. Corn, May opened 38 3-8 to 1-4c, closed 38c b. July opened 38 5-8c to 1-2c, closed 38 1-2c b. Oats, May opened 24 1-8c, closed 24 1-4c. July opened 24 1-4c, closed 25 1-4c. Pork, May opened at \$11.7 1-2, closed \$12.02 1-2c. July opened \$11.80, closed \$11.82 1-2. Lard, May opened \$6.27 1-2, closed \$6.27 1-2 b. July opened \$6.37 1-2, closed \$6.37 1-2. Ribs, May opened \$6.45, closed at \$6.43 1-2. July opened \$6.40 a, closed \$6.42 1-2. Flux, cash \$1.65. May \$1.65. Sept. \$1.16 1-2. Oct. \$1.13 1-2.

Chicago, March 28.—Wheat, May opened 65 3-4c, closed 66 7-8c. July opened 67c closed 67 7-8c b. Corn, May opened 38c, closed 38 3-8c. July opened 38 3-8c, closed 38 3-4c. Sept. opened 39 1-8c, closed 39 1-8c. Oats, May opened 24 3-8c, closed 24 3-8c. July opened 23 1-2c, closed 23 5-8c. Pork, May opened \$12.15 to \$12.25, closed at \$12.47 1-2 a. July opened \$11.92 1-2, closed \$12.27 1-2. Lard, May opened at \$6.35, closed \$6.52 1-2. July opened at \$6.45, closed \$6.62 1-2. Ribs, May opened \$6.60, closed \$6.62 1-2. July opened \$6.50 closed \$6.60 a.

Chicago, March 29.—Wheat, May opened 66 7-8c, closed 66 7-8c b. July opened 67 7-8c, closed 67 7-8c b. Corn, May opened 38 3-8c, closed 38 3-8c b. July opened 38 7-8c, closed 38 7-8c b. Oats, May opened 24 3-8c, closed 24 3-8c. July opened 23 3-4c, closed 23 7-8c. Pork, May opened \$12.65 to \$12.72 1-2, closed \$12.75. July opened \$12.55, closed \$12.35. Lard, May opened at \$6.55 to \$6.62 1-2, closed \$6.47 1-2. Ribs, May opened \$6.70, closed \$6.70 a. July opened \$6.65, closed \$6.60 a. Flux, cash \$1.65. May \$1.65. Sept. \$1.16 1-2. Oct. \$1.14.

Chicago, March 30.—Wheat, May opened 66 1-2c, closed 67 1-4c. July opened 67 5-8c, closed 68 3-8c a. Corn, May opened 38 1-8c, closed 38 7-8c a. July opened 38 1-2c, closed 39 5-8c a. Oats, May opened 24 3-8c, closed 24 5-8c a. July opened 23 3-4c, closed 24c a. Pork, May opened \$12.62 1-2 to \$12.67 1-2c. Lard, May opened at \$12.27 1-2c, closed \$12.25. Ribs, May opened \$6.45, closed \$6.42 1-2. July opened \$6.55, closed \$6.52 1-2. Ribs, May opened \$6.62 1-2, closed \$6.65. July opened \$6.52 1-2, closed \$6.55. Flux, cash \$1.65. May \$1.65. Sept. \$1.16 1-2 b. Oct. \$1.13 1-2c b.

Chicago, March 31.—May wheat opened at 67 1-4c, and ranged from 66 5-8c to 67 3-8c. Closing prices were:

Wheat—March, 66 3-8c; May, 66 3-4c; July 67 3-4c.

Corn—May, 38 5-8c; July, 39 3-8c.

Oats—May, 24 3-8c.

Pork—May, \$12.60.

Lard—May, \$6.60.

Ribs—May, \$6.57 1-2.

A week ago May option closed at 67 5-8c. A year ago May wheat closed at 72 3-4c; two years ago at \$1.05; three years ago at 70 3-8c; four years ago at 64 3-4c; five years ago at 55 1-4c, and six years ago at 64 3-4c.

## CHICAGO FLAX MARKET.

Chicago, March 31.—The market for flax seed closed to-day at \$1.65 for cash and May.

## DULUTH WHEAT MARKET.

No. 1 northern wheat at Duluth closed as follows for each day of the week:

Monday—May, 65 7-8c; July, 66 3-4c.

Tuesday—May, 66c, July, 67.

Wednesday—May, 67 1-8c; July, 68 1-8c.

Thursday—May, 67 1-4c; July, 68 1-4c.

Friday—May, 67 3-8c; July, 68 1-2c.

Saturday—May, 67c, July 68 1-2c.

On Saturday cash 1 hard closed at 67 1-2c. Apr. cash 1 northern at 66c.

A week ago May wheat closed at 65 7-8c. A year ago May wheat closed at 71 3-4c; two years ago at 98 3-4c; three years ago at 71c; four years ago at 62 7-8c; five years ago at 60 7-8c; and six years ago at 63c.

## WINNIPEG CLOSING WHEAT.

Wheat declined to-day, in sympathy with the drop in United States markets. Very little business done. No. 1 hard was quoted at 67 1-2 to 57 3-4c, in store Fort William, early in the day, but at the close 67 1-4c was quoted.

## MINNEAPOLIS WHEAT.

Minneapolis, March 31.—Wheat closed at 64 1-2c for May, cash No. 1 hard closed at 66 1-8c, and cash No. 1 northern at 65 1-8c.

## LIVERPOOL PRICES.

Liverpool, March 31.—Wheat closed 3 81 higher.

## LONDON FUR SALES.

The sales of C. M. Lompson & Co., London, which have been continued this week, resulted as follows:

Rats, fall and winter, 5 per cent higher than January.

Bear, same as March last.

Wolf, northern, 200 per cent higher than last March.

Mink, northern same as last March.

Marten, 15 per cent higher than last March.

Skunk, 35 per cent higher than last March.

Red fox, 75 per cent higher than last March.

The following additional particulars of the Hudson's Bay Company's sales of last week are given:

Wolverine, no change.

Raccoon, declined 5 per cent from last March.

Skunk, 30 per cent higher than last March.

Trenton will open in hardware and tinmithing at Lumsden, Assiniboia.

Allan & Maddock, Bowsmen, Minn., have assigned to A. J. Darroch of Swan River.

J. Watt, formerly of Watt & Albert, Winnipeg, has taken an interest in the hardware business of Watt & Gordon Winnipeg.

# Facts About "C" Horse Nails

## I

It is an undoubted fact that the best Horse Nails always command the best price.

## II

It is an undoubted fact that the "C" brand Horse Nails have always commanded the best price.

## III

It is therefore a logical deduction—as it is an undoubted fact—that the "C" brand Horse Nails are the best.

## IV

It is also an undoubted fact that "the best is the cheapest," therefore buy the "C" brand.

## V

It is an undoubted fact established by 35 years experience among dealers and farriers throughout the Dominion, that the "C" brand Horse Nails are the best to buy—the best to sell—the best to use.

## VI

We have only one price, and sell only to the trade.

Buyers of Horse Nails are specially requested to order the "C" brand made by the

Canada Horse Nail  
Company

MONTREAL.