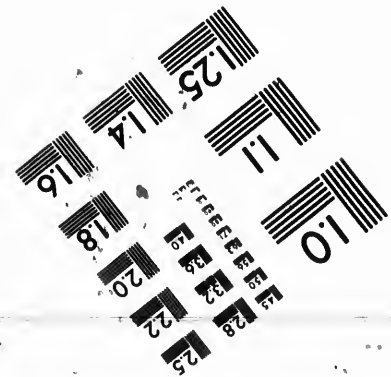
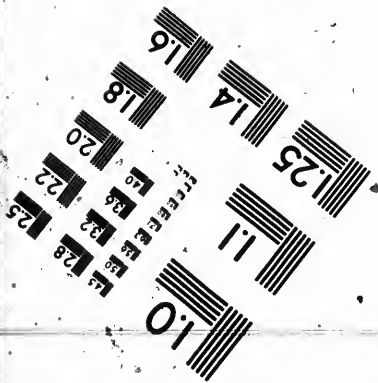
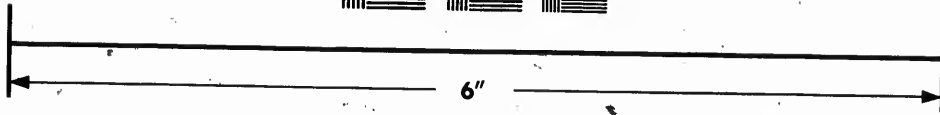
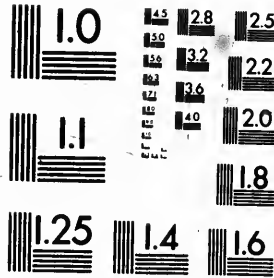


IMAGE EVALUATION
TEST TARGET (MT-3)



Photographic
Sciences
Corporation

23 WEST MAIN STREET
WEBSTER, N.Y. 14580
(716) 872-4503

**CIHM
Microfiche
Series
(Monographs)**

**ICMH
Collection de
microfiches
(monographies)**



Canadian Institute for Historical Microreproductions / Institut canadien de microreproductions historiques

© 1992

Technical and Bibliographic Notes / Notes techniques et bibliographiques

The Institute has attempted to obtain the best original copy available for filming. Features of this copy which may be bibliographically unique, which may alter any of the images in the reproduction, or which may significantly change the usual method of filming, are checked below.

L'Institut a microfilmé le meilleur exemplaire qu'il lui a été possible de se procurer. Les détails de cet exemplaire qui sont peut-être uniques du point de vue bibliographique, qui peuvent modifier une image reproduite, ou qui peuvent exiger une modification dans la méthode normale de filmage sont indiqués ci-dessous.

- Coloured covers/
Couverture de couleur
- Covers damaged/
Couverture endommagée
- Covers restored and/or laminated/
Couverture restaurée et/ou pelliculée
- Cover title missing/
Le titre de couverture manque
- Coloured maps/
Cartes géographiques en couleur
- Coloured ink (i.e. other than blue or black)/
Encre de couleur (i.e. autre que bleue ou noire)
- Coloured plates and/or illustrations/
Planches et/ou illustrations en couleur
- Bound with other material/
Relié avec d'autres documents
- Tight binding may cause shadows or distortion along interior margin/
La reliure serrée peut causer de l'ombre ou de la distorsion le long de la marge intérieure
- Blank leaves added during restoration may appear within the text. Whenever possible, these have been omitted from filming/
Il se peut que certaines pages blanches ajoutées lors d'une restauration apparaissent dans le texte, mais, lorsque cela était possible, ces pages n'ont pas été filmées.

- Coloured pages/
Pages de couleur
 - Pages damaged/
Pages endommagées
 - Pages restored and/or laminated/
Pages restaurées et/ou pelliculées
 - Pages discoloured, stained or foxed/
Pages décolorées, tachetées ou piquées
 - Pages detached/
Pages détachées
 - Showthrough/
Transparence
 - Quality of print varies/
Qualité inégale de l'impression
 - Continuous pagination/
Pagination continue
 - Includes index(es)/
Comprend un (des) index
- Title on header taken from:/
Le titre de l'en-tête provient:
- Title page of issue/
Page de titre de la livraison
 - Caption of issue/
Titre de départ de la livraison
 - Masthead/
Générique (périodiques) de la livraison

- Additional comments:/
Commentaires supplémentaires: There are some creases in the middle of the pages.

This item is filmed at the reduction ratio checked below/
Ce document est filmé au taux de réduction indiqué ci-dessous.

10X	14X	18X	22X	26X	30X
<input type="checkbox"/>	<input type="checkbox"/>	<input type="checkbox"/>	<input checked="" type="checkbox"/>	<input type="checkbox"/>	<input type="checkbox"/>
12X	16X	20X	24X	28X	32X

The to th

The poss of the filmi

Orig begin the k sion, other first sion, or ill

The I shall TINU whic

Maps differ entre begin right requi meth

The copy filmed here has been reproduced thanks to the generosity of:

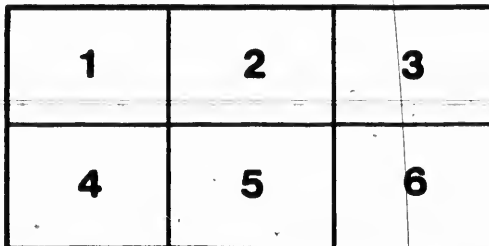
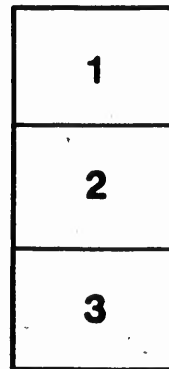
Manuscript Division,
National Archives of Canada

The images appearing here are the best quality possible considering the condition and legibility of the original copy and in keeping with the filming contract specifications.

Original copies in printed paper covers are filmed beginning with the front cover and ending on the last page with a printed or illustrated impression, or the back cover when appropriate. All other original copies are filmed beginning on the first page with a printed or illustrated impression, and ending on the last page with a printed or illustrated impression.

The last recorded frame on each microfiche shall contain the symbol \rightarrow (meaning "CONTINUED"); or the symbol ∇ (meaning "END"), whichever applies.

Maps, plates, charts, etc., may be filmed at different reduction ratios. Those too large to be entirely included in one exposure are filmed beginning in the upper left hand corner, left to right and top to bottom, as many frames as required. The following diagrams illustrate the method:



L'exemplaire filmé fut reproduit grâce à la générosité de:

Division des manuscrits,
Archives nationales du Canada

Les images suivantes ont été reproduites avec le plus grand soin, compte tenu de la condition et de la netteté de l'exemplaire filmé, et en conformité avec les conditions du contrat de filmage.

Les exemplaires originaux dont la couverture en papier est imprimée sont filmés en commençant par le premier plat et en terminant soit par la dernière page qui comporte une empreinte d'impression ou d'illustration, soit par le second plat, selon le cas. Tous les autres exemplaires originaux sont filmés en commençant par la première page qui comporte une empreinte d'impression ou d'illustration et en terminant par la dernière page qui comporte une telle empreinte.

Un des symboles suivants apparaîtra sur la dernière image de chaque microfiche, selon le cas: le symbole \rightarrow signifie "A SUIVRE", le symbole ∇ signifie "FIN".

Les cartes, planches, tableaux, etc., peuvent être filmés à des taux de réduction différents. Lorsque le document est trop grand pour être reproduit en un seul cliché, il est filmé à partir de l'angle supérieur gauche, de gauche à droite, et de haut en bas, en prenant le nombre d'images nécessaire. Les diagrammes suivants illustrent la méthode.

PREMIUM

OFFERED BY THE

MONTREAL DISTRICT AGRICULTURAL SHOW

MONTREAL DISTRICT CATTLE SHOW.

To be held at the usual place, September 16 1880.

Class. No. Horses. Prem.

- Class 1. For the best draft Stallion kept in the District the last 6 months, \$16
 For the next best do. do. 12
 For the third best do. do. 8
- Class 2. For the best Stallion, calculated for the Saddle do. do. 16
 For the next best do. do. 12
 For the third best do. do. 8
- Class 3. For the best draft Mare, kept in the District as a brood Mare, 12
 For the next best do. do. 9
 For the third best do. do. 6
- Class 4. For the best Mare, calculated for the Saddle, kept as a brood Mare, 12
 For the next best do. do. 9
 For the third best do. do. 6

Symmetry, strength, activity, spirit, thrift, hardiness and moderate size, will be the best recommendations for draft Stallions.

N. B.—No Mare will be intitled to premium unless the Colt is brought forward, to enable the Judges more accurately to determine the merit of the animal as a brood Mare.

To Canadian practical Farmers only, for Neat Cattle of improved Canadian breed.

- Class 5. For the best Bull to be kept in the District for 12 months, \$12
 For the next best do. do. 9
 For the third best do. do. 6
- Class 6. For the best Bull one year old do. do. 5
 For the next best do. do. 4
- Class 7. For the best pair of draft oxen do. do. 6
 For the next best do. do. 5
- Class 8. For the two best one year old Heifers, do. do. 5
 For the two next best do. do. 4
- Class 9. For the two best two year old Heifers, do. do. 6
 For the two next best do. do. 5
- Class 10. For the best Cow, do. do. 8
 For the next best do. do. 6
 For the third best do. do. 4

For neat Cattle of other than Canadian breed.

- Class 11. For the best Bull owned and kept in the District the ensuing 12 months \$12
 For the next best do. do. 9
 For the third best do. do. 6
- Class 12. For the best Bull, one year old do. do. 5
 For the next best do. do. 4
- Class 13. For the best pair of Steers, 3 years old, bred in the District, 6
 For the next best do. do. 5
- Class 14. For the two best Heifers, one year old, bred in the District, 5
 For the two next best do. do. 4
- Class 15. For the two best Heifers, two years old do. do. 6
 For the two next best do. do. 5
- Class 16. For the best Cow, owned in the District, 8
 For the next best do. do. 6
 For the third best do. do. 4
- Class 17. For the best Ram, one shear, owned and to be kept in the District the next 12 months, 5
 For the next best do. do. 4
 For the third best do. do. 3

obtained first prizes at any former District Ploughing Match, a Silver Medal or other reward.

- Class 32. To the person who shall plough a given quantity of land in the shortest time and in the best manner, \$9
 To the next best do. do. 6
 To the third best do. do. 4
- Ploughing Match for Canadians only.
- Class 33. To the Canadian who shall plough in the best manner do. do. 8
 To the next best do. do. 6
 To the third best do. do. 4
- Class 34. To the Ploughman who shall perform the best work with a plough drawn by one or two yoke of oxen only, with or without a driver. 8
 To the next best do. do. 6
 To the third best do. do. 4

- Class 35. To the owner of the best yoke of oxen exhibited at the ploughing match and which shall have been worked by the owner on his farm the preceding three months at plough or cart. 5
 To the next best do. do. 4
 To the third best do. do. 3

- Class 36. To the owner of the best pair of draft Geldings, worked at the ploughing match 6
 For the next best do. do. 5
 For the third best do. do. 4

N. B.—Notice will be given in due time on what day in October, the Ploughing Match is to take place.

DISTRICT SHOW OF FAT HOGS, to take place on the 22d day of January next, at the head of the New-Market.

- Class 37. For the four heaviest and best fattened Hogs, fatted in the District, \$10
 For the next best do. do. 8
 For the third best do. do. 6

DISTRICT CATTLE SHOW FOR FAT ANIMALS, to take place at the Hay-Market, on Thursday the 10th day of March next.

- Fat Oxen and Cows or Heifers.
- Class 38. For the heaviest and best fattened Ox, owned and fatted in the District, \$8
 For the next best do. do. 6
 For the third best do. do. 4
- Class 39. For the heaviest and best fattened Cow or Heifer, 6
 For the next best do. do. 5
 For the third best do. do. 4
- To Canadian practical Farmers only.
- Class 40. For the heaviest and best fattened Ox, of Canadian breed, 8
 For the next best do. do. 6
 For the third best do. do. 4

- Sheep.
- Class 41. For the three heaviest and best fattened Sheep, fatted in the District, 5
 For the three next best do. do. 3
 For the three third best do. do. 2
- The Society offer a reward to the Person or Persons who shall invent the least expensive and simplest method of attaching shafts to winter carriages in order to prevent the formation of cabots.

- Class 15. For the Cou...
 Next...
 Third...
- Class 16. For the...
 Next...
 Third...
- Class 17. For the...
 Next...
 Third...
- Class 18. For the...
 Next...
 Third...
- Class 19. For the...
 Next...
 Third...
- Class 20. For the...
 Next...
 Third...
- Class 21. For the...
 Next...
 Third...
- Class 22. For the...
 Next...
 Third...
- Class 23. For the...
 Next...
 Third...
- Class 24. For the...
 Next...
 Third...
- Class 25. For the...
 Next...
 Third...
- Class 26. For the...
 Next...
 Third...
- Class 27. For the...
 Next...
 Third...
- Class 28. For the...
 Next...
 Third...
- Class 29. For the...
 Next...
 Third...
- Class 30. For the...
 Next...
 Third...

PREMIUMS

OFFERED BY THE

DISTRICT AGRICULTURAL SOCIETY.

any former
 d. a Silver
 d. all plough a
 in the short-
 est manner, \$8
 do. 6
 do. 4
 do. 4
 dians only.
 all plough in
 do. 8
 do. 6
 do. 4
 shall per-
 with a plough
 oke of oxen
 a driver. 8
 do. 6
 do. 4
 yoke of ox-
 ploughing
 have been
 on his farm
 months at 5
 do. 4
 do. 3
 st pair of
 ed at the 6
 do. 5
 do. 4
 in due time on
 ng Match is to

HOGS, to take
 ext, at the head

best fatted
 istrict, \$10
 do. 8
 do. 6

OR FAT ANI-
 y-Market, on
 next.
 eifers.

fatted Ox,
 istrict, \$8
 do. 8
 do. 4
 fatted Cow
 do. 6
 do. 5
 do. 4
 mers only.
 fatted Ox,
 do. 8
 do. 4

nd best fat-
 istrict, 5
 do. 3
 do. 2
 the Person or
 t expensive and
 to winter car-
 ation of calots.

Class 15. For the best Cow, owned in the County, Next best do Third best do	6 5 4
<i>Sheep.</i>	
Class 16. For the best Ram, one shear, bred in the County, Next best do Third best do	4 3 2
Class 17. For the best Ram, two shear or upwards, owned in the county, Next best do do Third best do do	5 4 3
Class 18. For the best pen of three Ewes, one shear, bred in the county, Next best do do Third best do do	4 3 2
Class 19. For the best pen of three Ewes, two shear, or upwards, owned in the county, Next best do do Third best do do	5 4 3
<i>Swine.</i>	
Class 20. For the best Boar, six months old and not exceeding twelve months, Next best do do	3 2
Class 21. For the best Boar, twelve months old, and not exceeding three years, Next best do do	4 3
Class 22. For the best Sow, having produced a litter of Pigs, or evidently with young, Next best do do Third best do do	4 3 2
<i>Cheese and Butter.</i>	
Class 23. For the two best Cheeses, weighing 18 lbs. each, made in the County, Next best do do Third best do do	5 4 3
Class 24. For the best Firkin of Butter weighing 56 lbs. made in the County, Next best do do Third best do do	5 4 3
<i>Woollen and Linen Cloth.</i>	
Class 25. For the best piece of Woollen Cloth, measuring 20 yards, manufactured in the County, Next best do do Third best do do	5 4 3
Class 26. For the best piece of Linen Cloth, measuring 20 yards, Next best do do Next best do do	3 2 1

N. B.—The object of the Society in offering premiums for STEERS, is to determine the comparative merit of the different breeds, particularly in respect to early maturity. Inquiry will therefore be made into the mode of feeding, &c. &c.

Premiums offered for GRAIN & GREEN CROPS, &c. in the County of Montreal, for the year 1830.

Class 27. For the largest and best field of Wheat, not less than four Acres, For the 2d best,	10 8
Class 28. For the best do. of Barley, do For the 2d best,	8 8
Class 29. For the best do. of Oats, do For the 2d best,	8 6
Class 30. For the best do. of Peas, do	8

General Conditions for the Montreal District Agricultural Society's, CATTLE SHOW, Ploughing Matches, &c. &c. &c.—As approved and resolved by the Committee on the 14th April, 1829.

GENERAL CONDITIONS FOR CATTLE SHOWS.

1. That no more than three premiums be offered in the same class.
2. That no person shall be entitled to receive more than one premium in the same class.
3. That no animal or lot can obtain the same premium a second time.
4. That separate premiums be offered to Canadian Practical Farmers, for Neat Cattle of Canadian, or Improved Canadian Breed, and if any difference of opinion should arise, as to the identity of the Breed, the Committee shall decide.
5. That no cow will be entitled to a premium, unless the judges are satisfied, she shall have produced a Calf on or after the first of January preceeding, or be evidently with Calf at the time of the show.
6. That Brood Mares shall be disqualified unless their Colts are brought forward with them, to enable the judge more accurately to determine the merit of the Animal as a Brood Mare.
7. That no persons be qualified to receive premiums on Cows, Heifers, Steers, Sheep or Geldings; except Farmers.
8. That no person obtaining premiums on Male Animals shall refuse the use of such Animal to a reasonable number of applicants, at a moderate charge, viz:—Stallions fit for the Saddle—not over Twelve Dollars. Fit for Draft—not over Four Dollars. Bulls and Rams—not over Half a Dollar each.
9. That in future there shall be only one annual District Cattle Show to be held in September, except for Fat Animals which are to be shown in the winter.
10. That all Animals entered in the same class, shall be kept together on the show ground, not allowing other stock to intermix in order that the judges may be able to compare, and more accurately determine the comparative merit of each.
11. That the judges shall be appointed with the concurrence of at least Five Members of the Committee, that they shall be sworn, and no person shall act as judge, who is directly or indirectly interested in the decision.
12. That each candidate or person appearing for him, must enter his stock with the Secretary in their proper class, on or before 11 o'clock, A. M., on the day of show. The Secretary to be at the place at 9 o'clock in the morning for that purpose.

CONDITIONS FOR THE DISTRICT PLOUGHING MATCHES.

1. Any Candidate shall be disqualified, whose sod is settled, by any other, means, except the Plough, or the foot of the Plough-Man, as the Plough-works, or who suffers any assistance, setting of irons, or otherwise, to be

- For the next best do. do. 5
 For the two best Heifers, one year old, bred in the District, do. 5
 For the two next best do. do. 4
 15. For the two best Heifers, two years old do. do. 6
 For the two next best do. do. 5
 Class 16. For the best Cow, owned in the District, 8
 For the next best do. do. 6
 For the third best do. do. 4
Sheep.
 Class 17. For the best Ram, one shear, owned and to be kept in the District the next 12 months. 5
 For the next best do. do. 4
 For the third best do. do. 3
 Class 18. For the best Ram, two shears or upwards, 6
 For the next best do. do. 5
 For the third best do. do. 4
 Class 19. For the best pen of three Ewes, one shear do. do. 5
 For the next best do. do. 4
 For the third best do. do. 3
 Class 20. For the best pen of three Ewes, two shears or upwards do. do. 6
 For the next best do. do. 5
 For the third best do. do. 4
Swine.
 Class 21. For the best Boar, six months old, & not exceeding twelve months to be kept in the District, 4
 For the next best do. do. 3
 Class 22. For the best Boar, one year old and not exceeding 3 years, do. do. 5
 For the next best do. do. 4
 Class 23. For the best Sow, having produced a litter of pigs, or evidently with young, do. do. 5
 For the next best do. do. 4
 For the third best do. do. 3
Cheese and Butter
 Class 24. For the three best Cheeses, weighing 18 lbs. each made in the District, 5
 For the three next best do. do. 4
 For the three third best do. do. 3
 Class 25. For the best Firkin of Butter, weighing 56 lbs. do. do. 5
 For the next best do. do. 4
 For the third best do. do. 3
Woollen and Linen Cloth.
 Class 26. For the best piece of Woollen Cloth, measuring 20 yards, manufactured in the District, 8
 For the next best do. do. 6
 For the third best do. do. 4
 Class 27. For the best Canadian Ettoffe 20 yards, 4
 For the next best do. do. 3
 For the third best do. do. 2
 Class 28. For the best piece of Linen Cloth, measuring 20 yards, do. do. 4
 For the next best do. do. 3
 For the third best do. do. 2
 Class 29. For the six best Canadian manufactured Straw Hats, or imitation Leghorn Hats, do. do. 3
 For the next best do. do. 2
 For the third best do. do. 1
Agricultural Machines.
 Class 30. For inventing or improving Machines for performing in a superior manner or at a cheaper rate, any agricultural operation. The Committee will award such premiums as they shall judge the Machines produced and approved, entitled to.

DISTRICT PLOUGHING MATCH—To be held in October next.

Class 31. To the best of the Ploughmen who

- For the next best do. do. 5
 For the third best do. do. 4
To Canadian practical Farmers only.
 Class 40. For the heaviest and best fattened Ox, of Canadian breed, 8
 For the next best do. do. 6
 For the third best do. do. 4
Sheep.
 Class 41. For the three heaviest and best fattened Sheep, fattened in the District, 5
 For the three next best do. do. 3
 For the three third best do. do. 2
 The Society offer a reward to the Person or Persons who shall invent the least expensive and simplest method of attaching shafts to winter carriages in order to prevent the formation of cahots.
 —Also—For a new and simple description of winter Carriage drawn by one Horse, which might be substituted for the common train now in use and so constructed as not to form Cahots. These premiums to be awarded next winter, when there shall be sufficient snow to prove the several new inventions to the satisfaction of the committee.
 At the District show of Fat Cattle, the Society will award a premium to any person who shall introduce a new description of Yam or Potatoe, calculated for the feeding of cattle, and which shall be approved by the Committee

MONTREAL COUNTY CATTLE SHOW, to be held at St. Laurent on Thursday the 9th day of September next.

- Horses.*
 Class 1. For the best draft Stallion kept in the Country the last six months, \$10
 For the next best do. do. 10
 For the third best do. do. 8
 Class 2. For the best pair of Geldings, fit for the Plough, kept by a Farmer, 6
 For the next best do. do. 5
 Class 3. For the best draft brood Mare owned in the County, 10
 For the next best do. do. 8
 For the third best do. do. 6
 N. B.—Brood Mares subject to the same regulations as at the District Show.

To Canadian practical Farmers only, for Neat Cattle of the improved Canadian breed.

- Class 4. For the best Bull of Canadian breed, to be kept in the County for 12 months, \$10
 Next best do. do. 8
 Third best do. do. 6
 Class 5. For the best one year old Bull, do. 4
 Next best do. do. 3
 Class 6. For the best pair of Oxen, do. 5
 Next best do. do. 4
 Class 7. For the two best one year old Heifers, 4
 Two next best do. do. 3
 For the two best two year old Heifers. 5
 For next best do. do. 4
 Class 9. For the best Cow, 6
 Next best do. do. 5
 Third best, do. do. 4

Neat Cattle, other than Canadian Breed.

- Class 10. For the best Bull, owned and kept in the County next 12 months. 10
 Next best do do 8
 Third best do do 6
 Class 11. For the best one year old Bull, do. 4
 Next best do do 3
 Class 12. For the best pair of Steers, bred in the County, 5
 Next best, do. do. 4
 Class 13. For the two best one year old Heifers, bred in the County, 4
 Next best do do 3

- Class 14. For the two best two years old heifers, do do 5
 Next best do do 4

N. B.—The premiums for comparative merit in respect to sires to be made
 Premiums of &c. in the
 Class 27. For
 W
 For
 Class 28. For
 For
 Class 29. For
 For
 Class 30. For
 For
 Class 31. For
 For
 les
 Class 32. For
 th
 For
 Class 33. For
 no
 For
 Class 34. For
 th
 For
 To Can
 Class 35. For
 W
 For
 Class 36. For
 For
 Class 37. For
 For
 Class 38. For
 For
 Class 39. For
 le
 For
 Class 40. For
 th
 For
 Class 41. For
 on
 For
 Class 42. To
 F
 b
 To
 To
 Class 43. To
 g
 b
 To
 To
 N. B.—A
 and GREEN
 SUMMER F.
 cretary, on c
 In future
 um that shall
 ous spring;
 Newspapers
 ish Church d
 It is recom
 table—and if
 strong rope o
 All Anim
 COUNTRY SE
 o'clock, A. I
 All Candid
 the Society's
 where doub
 MITTEE sha
 By or
 Montreal,

do. do. 5
do. do. 4
Farmers only.
eat fattened Ox, 8
do. do. 6
do. do. 4
and best Fat-
the District, 5
t do. do. 3
t do. do. 2
to the Person or
east expensive and
tafts to winter car-
nformation of calves.
scription of winter
which might be
now in use and so
These premiums
en there shall be
ral new inventions
tee.
attle, the Society
rson who shall in-
m or Potatoe, cal-
, and which shall

**CATTLE SHOW, to
Thursday the 9th**

on kept in the
months, \$10
do. do. 10
do. do. 8
ldings, fit for
a Farmer, 6
do. do. 5
l Mare owned 10
do. do. 8
do. do. 6
t to the same
District Show.
ers only, for Neat
adian breed.
adian breed,
County for 12 \$10
do. 8
do. 6
old Bull, do. 4
do. 3
ken, do. 5
do. 4
ear old Heifers, 4
do. 3
ear old Heifers. 5
do. 4
6
5
4

Canadian Breed.
ned and kept
12 months. 10
do 8
do 6
old Bull, do. 4
do 3
steers, bred in
5
4
4
4
years old Heif-
anty, do 3
years old heif-
5
4

Next best do do 1

N. B.—The object of the Society in offering premiums for STEERS, is to determine the comparative merit of the different breeds, particularly in respect to early maturity. Intully will therefore be made into the mode of feeding, &c. &c.

Premiums offered for GRAIN & GREEN CROPS, &c. in the County of Montreal, for the year 1830.

Class 27. For the largest and best field of Wheat, not less than four Acres, 10
For the 2d best, 8

Class 28. For the best do. of Barley, do 8
For the 2d best, 8

Class 29. For the best do. of Oats, do 8
For the 2d best, 6

Class 30. For the best do. of Peas, do 8
For the 2d best, 6

Class 31. For the best do. of Indian Corn, not less than two Acres, 6
For the 2d best, 4

Class 32. For the best do. of Potatoes, not less than four Acres, 10
For the 2d best, 8

Class 33. For the best do. of Mangle Wurtzle not less than two Acres, 6
For the 2d best, 4

Class 34. For the best do. of Turnips, not less than one Acre, 4
For the 2d best, 3

To Canadian practical Farmers only.

Class 35. For the largest and best field of Wheat not less than three Arpents, 10
For the 2d best, 8

Class 36. For the best do. of Barley, do 8
For the 2d best, 6

Class 37. For the best do. of Oats, do 8
For the 2d best, 6

Class 38. For the best do. of Peas, do 8
For the 2d best, 6

Class 39. For the best do. of Indian Corn, not less than two Arpents, 6
For the 2d best, 4

Class 40. For the best do. of Potatoes, not less than three Arpents, 10
For the 2d best, 8

Class 41. For the best do. of Flax, not less than one Arpent, 4
For the 2d best, 3

Class 42. To the Canadian who shall have his Farm and stock generally in the best condition, 8
To the 2d best do. 6
To the 3d best do. 4

Class 43. To the Canadian who shall have the greatest quantity of Land in the best state of Summer Fallow, 6
To the 2d best do. 5
To the 3d best do. 4

N. B.—All claimants for Premiums on GRAIN and GREEN CROPS, well managed FARMS and SUMMER FALLOW, to serve a notice on the Secretary, on or before the 1st of JUNE next.

In future no Stallion shall be entitled to premium that shall not have been advertised the previous spring; (the place kept, and Rates,) in the Newspapers—on three several Sundays at the parish Church door, where the owner resides.

It is recommended that Bulls be rendered tractable—and if possible, led to the place of show, by a strong rope or chain, to prevent accident.

All Animals exhibited at the DISTRICT or COUNTY SHOWS, to be on the ground at ELEVEN o'clock, A. M.

All Candidates for Premiums to be subject to the Society's general rules and regulations, and where doubts may arise, the MANAGING COMMITTEE shall decide.

By order, **WM. EVANS,**
Secretary.

Montreal, 15th April, 1830.

person shall act as judge, who is directly or indirectly interested in the decision.

12. That each candidate or person appearing for him, must enter his stock with the Secretary in their proper class, on or before 11 o'clock, A. M., on the day of show. The Secretary to be at the place at 9 o'clock in the morning for that purpose.

CONDITIONS FOR THE DISTRICT PLOUGHING MATCHES.

1. Any Candidate shall be disqualified, whose sod is settled, by any other, means, except the Plough, or the foot of the Plough-Man, as the Plough-works, or who suffers any assistance, setting of irons, or otherwise, to be given to the Plough-man.
2. Any person having obtained first premiums, at any former District Ploughing match shall be disqualified; but such persons may compete in a separate class, for honorary or other reward.
3. The premiums shall be awarded to the Candidates who shall perform the work in the shortest space of time, and in the best manner.

☐ **N. B.**—The Judges appointed as for the Cattle Shows.

GENERAL CONDITIONS FOR GRAIN & GREEN CROPS, &c. &c.

1. Any claimants for premiums on Grain or Green crops, whose farm generally does not appear to the judge to be well managed, in proportion to the time they may have been in possession of it shall be disqualified.
2. That premiums offered for Wheat shall only be adjudged where the wheat has been sowed after green crop or summer fallow. This rule however, not to be enforced before the next year.

PREMIUMS OFFERED TO CANADIAN PRACTICAL FARMERS ONLY, IN THE COUNTY OF MONTREAL.

1. Three premiums offered to Canadian Practical Farmers, for well managed Farms generally. The Judges to inspect the Tillage, Drains, Fences, Stock and Barns of each competitor, and report accordingly.
2. Three premiums offered to Canadian Practical Farmers, for the greatest quantity of summer Fallow. The Judges shall be particular, that it is well Ploughed, and clean from all kinds of grass and weeds.

INSTRUCTIONS TO THE JUDGES AT THE CATTLE SHOWS, &c. &c.

You are to decide which is the best Animal, or lot of Animals in each class, having regard in forming your judgment to excellence and utility of form, quantity of flesh, lightness of ossal, propensity to milk or fatten, and early maturity; also, in Sheep, to quantity and quality of wool. Having signed your adjudication, you are not to mention your decision until announced to the Committee, you are not to disclose the opinions of each other, previous to your report, and the decision of the majority shall be conclusive, you shall withhold any premium when there shall not appear to be sufficient merit in the Animal or its offspring, you shall number the lots in each class, in the order of the comparative merit.

☐ **N. B.**—When Judges are appointed to the inspection of other than live stock the instructions to be altered so as to be applicable to that particular inspection; according to the general conditions of the Society, by which the Judges are to be governed in their adjudications.

By Order,
Wm. EVANS, Secretary.

