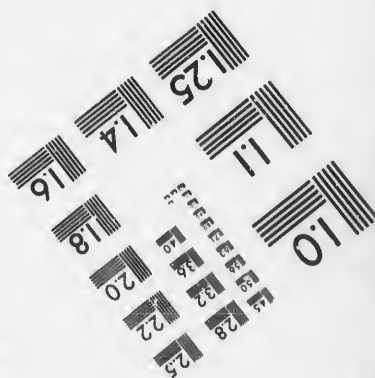
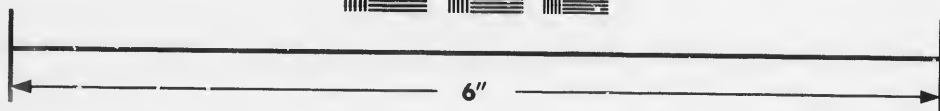
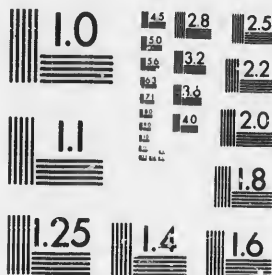


**IMAGE EVALUATION  
TEST TARGET (MT-3)**



**Photographic  
Sciences  
Corporation**

23 WEST MAIN STREET  
WEBSTER, N.Y. 14580  
(716) 872-4503

1.8  
2.0  
2.2  
2.5  
2.8  
3.2  
3.6  
4.0

**CIHM/ICMH  
Microfiche  
Series.**

**CIHM/ICMH  
Collection de  
microfiches.**



Canadian Institute for Historical Microreproductions / Institut canadien de microreproductions historiques

10

**© 1987**

Technical and Bibliographic Notes/Notes techniques et bibliographiques

The Institute has attempted to obtain the best original copy available for filming. Features of this copy which may be bibliographically unique, which may alter any of the images in the reproduction, or which may significantly change the usual method of filming, are checked below.

L'Institut a microfilmé le meilleur exemplaire qu'il lui a été possible de se procurer. Les détails de cet exemplaire qui sont peut-être uniques du point de vue bibliographique, qui peuvent modifier une image reproduite, ou qui peuvent exiger une modification dans la méthode normale de filmage sont indiqués ci-dessous.

- Coloured covers/  
Couverture de couleur
- Covers damaged/  
Couverture endommagée
- Covers restored and/or laminated/  
Couverture restaurée et/ou pelliculée
- Cover title missing/  
Le titre de couverture manque
- Coloured maps/  
Cartes géographiques en couleur
- Coloured ink (i.e. other than blue or black)/  
Encre de couleur (i.e. autre que bleue ou noire)
- Coloured plates and/or illustrations/  
Planches et/ou illustrations en couleur
- Bound with other material/  
Relié avec d'autres documents
- Tight binding may cause shadows or distortion along interior margin/  
La reliure serrée peut causer de l'ombre ou de la distorsion le long de la marge intérieure
- Blank leaves added during restoration may appear within the text. Whenever possible, these have been omitted from filming/  
Il se peut que certaines pages blanches ajoutées lors d'une restauration apparaissent dans le texte, mais, lorsque cela était possible, ces pages n'ont pas été filmées.
- Additional comments: [Printed ephemera] [4] p.  
Commentaires supplémentaires:

- Coloured pages/  
Pages de couleur
- Pages damaged/  
Pages endommagées
- Pages restored and/or laminated/  
Pages restaurées et/ou pelliculées
- Pages discoloured, stained or foxed/  
Pages décolorées, tachetées ou piquées
- Pages detached/  
Pages détachées
- Showthrough/  
Transparence
- Quality of print varies/  
Qualité inégale de l'impression
- Includes supplementary material/  
Comprend du matériel supplémentaire
- Only edition available/  
Seule édition disponible
- Pages wholly or partially obscured by errata slips, tissues, etc., have been refilmed to ensure the best possible image/  
Les pages totalement ou partiellement obscurcies par un feuillet d'errata, une pelure, etc., ont été filmées à nouveau de façon à obtenir la meilleure image possible.

This item is filmed at the reduction ratio checked below/  
Ce document est filmé au taux de réduction indiqué ci-dessous.

10X	12X	14X	16X	18X	20X	22X	24X	26X	28X	30X	32X
				✓							

The copy filmed here has been reproduced thanks to the generosity of:

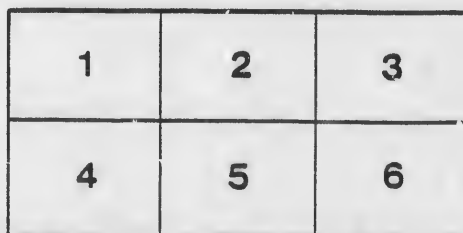
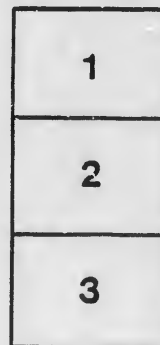
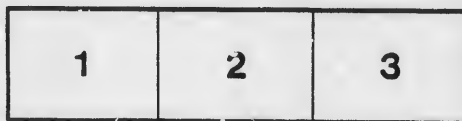
The Nova Scotia  
Legislative Library

The images appearing here are the best quality possible considering the condition and legibility of the original copy and in keeping with the filming contract specifications.

Original copies in printed paper covers are filmed beginning with the front cover and ending on the last page with a printed or illustrated impression, or the back cover when appropriate. All other original copies are filmed beginning on the first page with a printed or illustrated impression, and ending on the last page with a printed or illustrated impression.

The last recorded frame on each microfiche shall contain the symbol  $\rightarrow$  (meaning "CONTINUED"), or the symbol  $\nabla$  (meaning "END"), whichever applies.

Maps, plates, charts, etc., may be filmed at different reduction ratios. Those too large to be entirely included in one exposure are filmed beginning in the upper left hand corner, left to right and top to bottom, as many frames as required. The following diagrams illustrate the method:



L'exemplaire filmé fut reproduit grâce à la générosité de:

The Nova Scotia  
Legislative Library

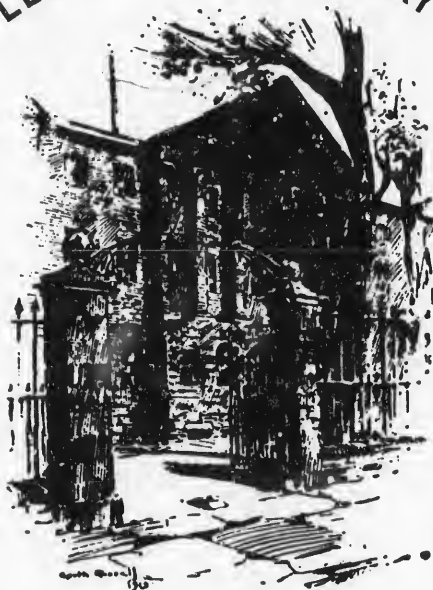
Les images suivantes ont été reproduites avec le plus grand soin, compte tenu de la condition et de la netteté de l'exemplaire filmé, et en conformité avec les conditions du contrat de filmage.

Les exemplaires originaux dont la couverture en papier est imprimée sont filmés en commençant par le premier plat et en terminant soit par la dernière page qui comporte une empreinte d'impression ou d'illustration, soit par le second plat, selon le cas. Tous les autres exemplaires originaux sont filmés en commençant par la première page qui comporte une empreinte d'impression ou d'illustration et en terminant par la dernière page qui comporte une telle empreinte.

Un des symboles suivants apparaîtra sur la dernière image de chaque microfiche, selon le cas: le symbole  $\rightarrow$  signifie "A SUIVRE", le symbole  $\nabla$  signifie "FIN".

Les cartes, planches, tableaux, etc., peuvent être filmés à des taux de réduction différents. Lorsque le document est trop grand pour être reproduit en un seul cliché, il est filmé à partir de l'angle supérieur gauche, de gauche à droite, et de haut en bas, en prenant le nombre d'images nécessaire. Les diagrammes suivants illustrent la méthode.

NOVA SCOTIA  
LEGISLATIVE LIBRARY



PROVINCE HOUSE



WEYMOUTH BRIDGE, N. S

# WEYMOUTH HOUSE

WEYMOUTH, NOVA SCOTIA



R. L. BLACK, Proprietor

MS  
117

1632

W



ALONG THE RIVER

NOVA SCOTIA is the ideal recreation land and sp  
paradise. WEYMOUTH, on the

River, near St. Mary's Bay, is one of the most charming spots in the  
The air from forest and bay is soft, but invigorating. Sultry days are u  
and the mercury never registers over 75. Mosquitoes, malaria and hay-  
unknown.

The recreations are numerous and diversified. There is deep sea  
the bay for halibut, haddock and cod while streams and lakes the an  
well stocked with salmon, bass and trout. The hunter can find large  
moose, caribou and bear, or can content himself with a nearer quest lik  
woodcock and grouse. There is sailing on the bay, rowing and canoein  
river and bath houses free to all who enjoy a salt water dip. Good  
bicycling and driving, with objective points of unusual interest. The  
excellent and charges moderate. Pleasant walks, magnificent views,  
sunsets, and hospitable citizens form but a modest complement to We  
attractions.

No better place can be found in the Maritime Provinces for our  
cousins to spend their vacation.



VER

ideal recreation land and sportsman's  
WEYMOUTH, on the Sissiboo  
most charming spots in the Province.  
operating. Sultry days are unknown,  
quitoses, malaria and hay-fever are

ified. There is deep sea fishing in  
streams and lakes the angler finds  
The hunter can find large game—  
self with a nearer quest like plover,  
bay, rowing and canoeing on the  
a salt water dip. Good roads for  
of unusual interest. The livery is  
walks, magnificent views, glorious  
modest complement to Weymouth's

aritime Provinces for our American



A WEYMOUTH INDUSTRY

THE WEYMOUTH HOUSE commands a pictur-  
esque view of the  
busy "Bridge" and the Sissiboo River. It is centrally located on high ground  
convenient to churches, stores, telegraph office and depot, and yet enjoys a  
seclusion of its own that invites recuperation and rest.

THE HOUSE is substantially built, newly refurnished and well managed.  
The rooms are cheery and home-like. The shady veranda and adjacent grove  
provide pleasant lounging places for the less active. New bathroom and perfect  
plumbing. Boats free to guests. Cherries in abundance to all who like them.

THE TABLE. The Weymouth House has long enjoyed the reputation of  
setting a first-class table, and no pains will be spared to maintain the same high  
standard. Good food, well cooked, and plenty of it. Pure well water for drinking.

THE WEYMOUTH HOUSE is open all the year. Summer season from June  
to October. Rates are \$1.50 per day, \$7.00 to \$10.00 per week. Special rates  
to families by the month. For accommodations address,

R. L. BLACK, Proprietor,

WEYMOUTH, NOVA SCOTIA, CANADA.



WEYMOUTH is reached via the Dominion Atlantic Railway's handsome steamers from Boston to Yarmouth thence 45 miles by rail. Passengers leaving Boston in the afternoon, arrive at Weymouth early the next morning.

At Yarmouth a small deposit is required on bicycles, which is refunded in full on your return. Personal baggage is not subject to duty. For time tables, stateroom reservations and tickets, address the DOMINION ATLANTIC RAILWAY, 228 Washington Street, Boston, or, NEW ENGLAND SUMMER RESORT ASSOCIATION, 3 Park Place, New York.

A representative of the Weymouth House meets all trains at Weymouth. Ask for MR. BLACK.



SISSIBOO RIVER AND ST. MARY'S BAY.

