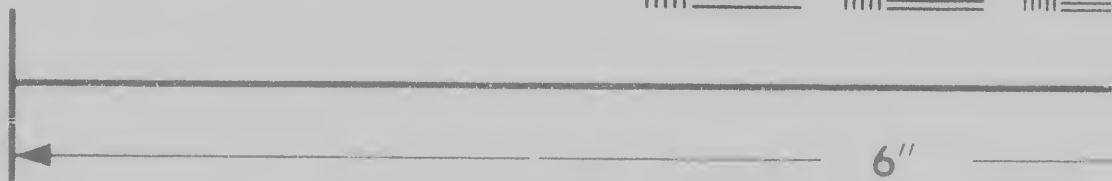
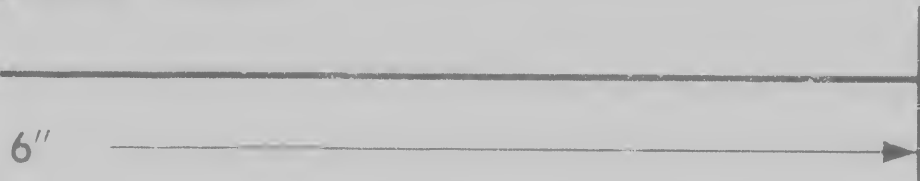
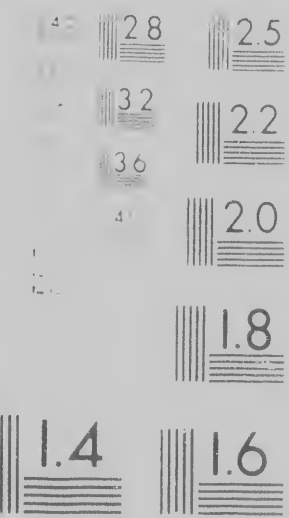
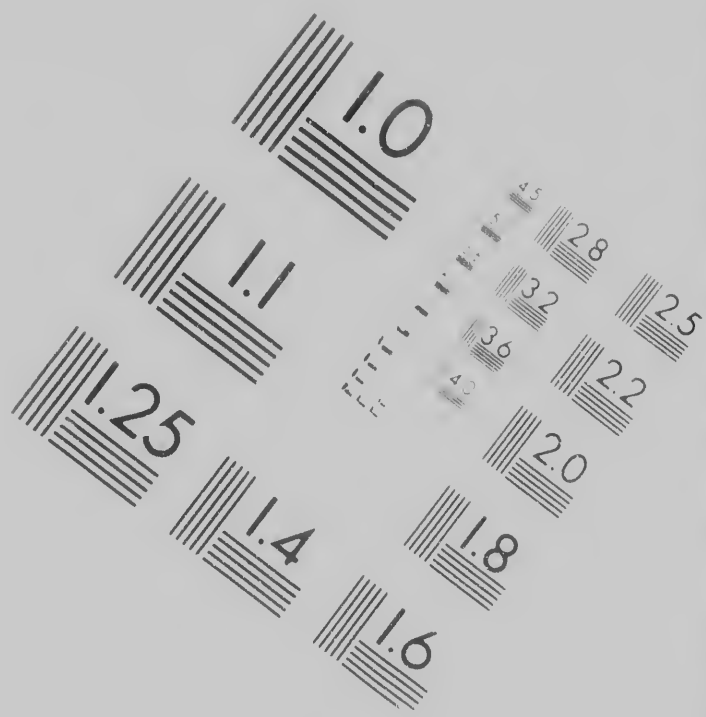


IMAGE EVALUATION TEST TARGET (M)

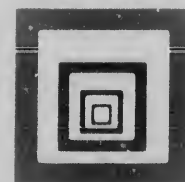


VALUATION
GET (MT-3)



**CIHM/ICMH
Microfiche
Series.**

**CIHM/IC
Collection
microfich**



M/ICMH
ection de
rofiches.

The In
original
copy v
which
reprod
the us

C
C

C
C

C
C

C
L

C
C

C
E

C
P

B
R

T
a
L
d

E

Technical and Bibliographic Notes/Notes techniques et bibliographiques

The Institute has attempted to obtain the best original copy available for filming. Features of this copy which may be bibliographically unique, which may alter any of the images in the reproduction, or which may significantly change the usual method of filming, are checked below.

L'Institut a microfilmé le meilleur exemplaire de cet ouvrage qu'il lui a été possible d'obtenir. Les caractéristiques de cet exemplaire qui, du point de vue bibliographique, peuvent modifier une image reproduite, ou qui peuvent nécessiter une modification dans la méthode habituelle de microfilmage, sont indiqués ci-dessous.

- | | |
|--|--|
| <input type="checkbox"/> Coloured covers/
Couverture de couleur | <input type="checkbox"/> Coloured pages
Pages de couleur |
| <input type="checkbox"/> Covers damaged/
Couverture endommagée | <input type="checkbox"/> Pages damaged
Pages endommagées |
| <input type="checkbox"/> Covers restored and/or laminated/
Couverture restaurée et/ou pelliculée | <input type="checkbox"/> Pages restored
Pages restaurées |
| <input type="checkbox"/> Cover title missing/
Le titre de couverture manque | <input type="checkbox"/> Pages discoloured
Pages décolorées |
| <input type="checkbox"/> Coloured maps/
Cartes géographiques en couleur | <input type="checkbox"/> Pages detached
Pages détachées |
| <input type="checkbox"/> Coloured ink (i.e. other than blue or black)/
Encre de couleur (i.e. autre que bleue ou noire) | <input type="checkbox"/> Showthrough/
Transparence |
| <input type="checkbox"/> Coloured plates and/or illustrations/
Planches et/ou illustrations en couleur | <input type="checkbox"/> Quality of print
Qualité inégale |
| <input type="checkbox"/> Bound with other material/
Relié avec d'autres documents | <input type="checkbox"/> Includes supplementary material
Comprend du matériel supplémentaire |
| <input type="checkbox"/> Tight binding may cause shadows or distortion
along interior margin/
La reliure serrée peut causer de l'ombre ou de la
distorsion le long de la marge intérieure | <input type="checkbox"/> Only edition available
Seule édition disponible |
| <input type="checkbox"/> Blank leaves added during restoration may
appear within the text. | <input type="checkbox"/> Pages wholly or partially
obliterated by slips, tissues, etc.
Pages totalement ou partiellement
effacées par des lambeaux, des
tissus, etc. Assurez-vous que
nous avons pu assurer le meilleur |

ques et bibliographiques

tut a microfilmé le meilleur exemplaire
si a été possible de se procurer. Les détails
exemplaire qui sont peut-être uniques du
de vue bibliographique, qui peuvent modifier
page reproduite, ou qui peuvent exiger une
cation dans la méthode normale de filmage
ndiqués ci-dessous.

Coloured pages/
Pages de couleur

Pages damaged/
Pages endommagées

Pages restored and/or laminated/
Pages restaurées et/ou pelliculées

Pages discoloured, stained or foxed/
Pages décolorées, tachetées ou piquées

Pages detached/
Pages détachées

Howthrough/
Transparence

Quality of print varies/
Qualité inégale de l'impression

Includes supplementary material/
Comprend du matériel supplémentaire

Only edition available/
Seule édition disponible

Pages wholly or partially obscured by errata
slips, tissues, etc., have been refilmed to
ensure the best possible image/

The copy filmed here is
to the generosity of:

Library
Photod

The images appearing
possible considering the
of the original copy and
filming contract specif

Original copies in print
beginning with the front
the last page with a pr
sion, or the back cover
other original copies a
first page with a printe
sion, and ending on the
or illustrated impressio

Maps, plates, charts, etc.
different reduction rates
entirely included in one
beginning in the upper
right and top to bottom
required. The following
method:

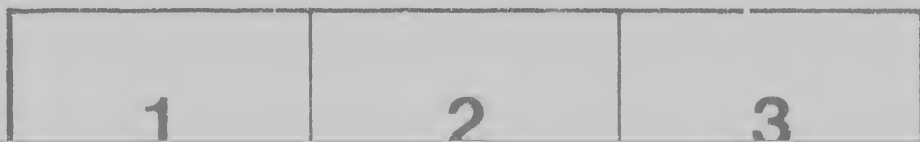
filmed here has been reproduced thanks to the generosity of:

Library of Congress
Photoduplication Service

copies appearing here are the best quality possible, considering the condition and legibility of the original copy and in keeping with the contract specifications.

Copies in printed paper covers are filmed beginning with the front cover and ending on the last page with a printed or illustrated impression on the back cover when appropriate. All microfiche copies are filmed beginning on the first page with a printed or illustrated impression and ending on the last page with a printed or illustrated impression.

Tables, charts, etc., may be filmed at various reduction ratios. Those too large to be included in one exposure are filmed in a grid pattern in the upper left hand corner, left to right and top to bottom, as many frames as necessary. The following diagrams illustrate the



L'exemplaire filmé fut reproduit grâce à la générosité de:

Library of Congress
Photoduplication Service

Les images suivantes ont été reproduites avec le plus grand soin, compte tenu de la condition et de la netteté de l'exemplaire filmé, et en conformité avec les conditions du contrat de filmage.

Les exemplaires originaux dont la page de titre sur papier est imprimée sont filmés en commençant par le premier plat et en terminant sur la dernière page qui comporte une empreinte d'impression ou d'illustration, soit le premier plat, selon le cas. Tous les autres exemplaires originaux sont filmés en commençant sur la première page qui comporte une empreinte d'impression ou d'illustration et en terminant sur la dernière page qui comporte une empreinte.

Les cartes, planches, tableaux, etc., sont filmés à des taux de réduction différents. Lorsque le document est trop grand pour être reproduit en un seul cliché, il est filmé en grille dans le coin supérieur gauche, de gauche à droite et de haut en bas, en prenant le nombre minimum d'images nécessaire. Les diagrammes suivants illustrent la méthode.



reproduit grâce à la

Library of Congress
Duplication Service

ont été reproduites avec le
note tenu de la condition et
exemplaire filmé, et en
conditions du contrat de

films dont la couverture en
ont filmés en commençant
en terminant soit par la
première page qui
porte une empreinte
de la première page
de la couverture, soit par le second
exemplaire
des autres exemplaires
en commençant par la
première page qui
porte une empreinte
de la première page
de la couverture et en terminant par
la dernière page qui
porte une telle

tableaux, etc., peuvent être
réduits à différentes échelles.

est trop grand pour être
cliché, il est filmé à partir
de la gauche, de gauche à droite,
prenant le nombre
de pages. Les diagrammes suivants

TO THE

IT

objects, and
authorised ti
sions of an in
be supplied v
picious, and
places on our
may not suf
for you dees
the trouble o
freeed to st
being it, for
for supplies
certificate, a
ply of the re
made a cov
habit of com
prebase to
citizens, the
by, and no

TO THE GOVERNORS OF MASSACHUSETTS, GEORGIA, S. CAROLINA, MASSACHUSETTS, AND
N. HAMPSHIRE.

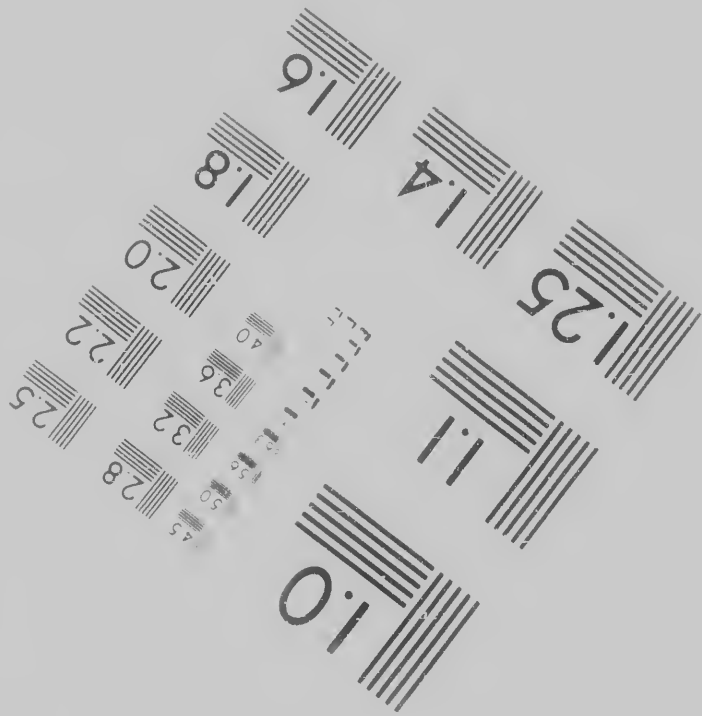
WASHINGTON, May 6, 08.

THE evasions of the preceding Embargo laws went so far towards defeating their objects, and chiefly by vessels clearing out coastwise, that Congress by their act of April 25, authorised the absolute detention of all vessels bound coastwise with cargoes exciting suspicions of an intention to evade those laws. There being few towns on our sea-coast which cannot be supplied with flour from their interior country, shipments of flour become generally suspicious, and proper subjects of detention.

is one of the few places on our sea-board which need supplies of flour by sea, for its own consumption. That it may not suffer by the cautions we are obliged to use, I request of your Excellency, whenever you deem it necessary, that your present, or any future stock should be enlarged, to take the trouble of giving your certificate in favor of any merchant in whom you have confidence, directed to the Collector of any port, usually exporting flour from which he may chuse to bring it, for any quantity which you may deem necessary for consumption, beyond your interior supplies, inclosing to the Secretary of the Treasury, at the same time, a duplicate of the certificate, as a check on the falsification of your signature. In this way we may ensure a supply of the real wants of your citizens, and at the same time prevent these wants from being made a cover for the crimes against their country, which unprincipled adventurers are in the habit of committing. I trust too, that your Excellency will find an apology for the trouble I propose to give you, in that desire which you must feel in common with all our worthy citizens, that inconveniencies encountered cheerfully by them for the interests of their country, shall not be turned merely to the unlawful profits of the most worthless part of society.

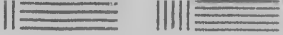
AND

ing their
April 25,
ing suspi-
ch cannot
rally sus-
f the few
That it
, whete-
d, to take
nfidence,
chuse to
our inte-
te of the
re a sup-
m being
re in the
trouble I
r worthy
eir coun-
society



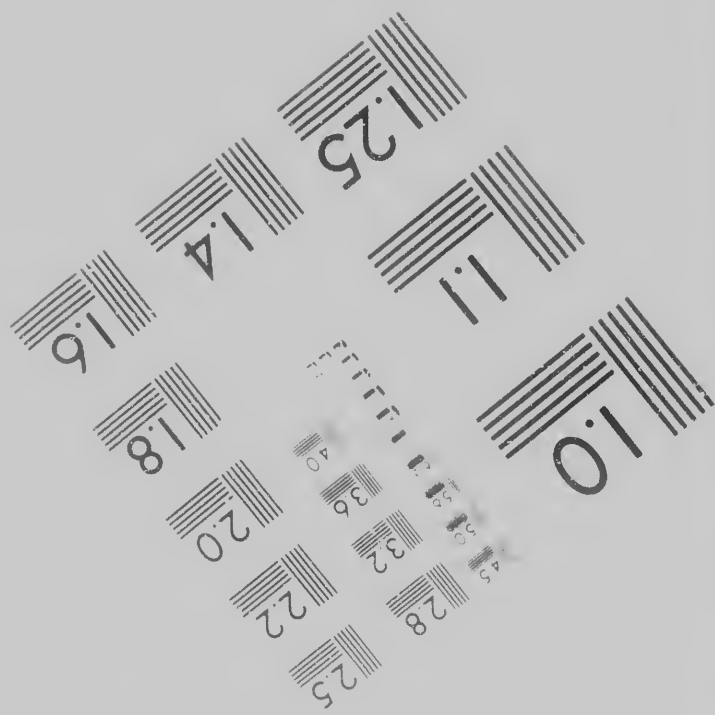
Photographic
Sciences
Corporation

23 W
WEB
(



6"

Canadian



23 WEST MAIN STREET
WEBSTER, N.Y. 14580
(716) 872-4503

ic
n





Canadian Institute for Historical Microreproductions / Institut canadien de microre

© 1988

n de microreproductions historiques

86

R

T
a
L
d

B
a
h
I
le
n
p

A
C

This ite
Ce doc

10X

--	--

Relié avec d'autres documents

Comprend du

Tight binding may cause shadows or distortion along interior margin/

La reliure serrée peut causer de l'ombre ou de la distorsion le long de la marge intérieure

Only edition av
Seule édition c

Blank leaves added during restoration may appear within the text. Whenever possible, these have been omitted from filming/

Il se peut que certaines pages blanches ajoutées lors d'une restauration apparaissent dans le texte, mais, lorsque cela était possible, ces pages n'ont pas été filmées.

Pages wholly c
slips, tissues, e
ensure the bes
Les pages tota
obscurcies par
etc., ont été fil
obtenir la meill

Additional comments:/ CIHM no. 60595
Commentaires supplémentaires:

This item is filmed at the reduction ratio checked below/
Ce document est filmé au taux de réduction indiqué ci-dessous.

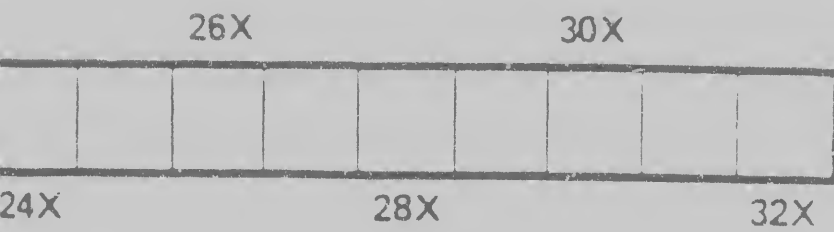
10X		14X		18X		22X		26X
	12X		16X		20X		24X	

comprend du matériel supplémentaire

only edition available/
seule édition disponible

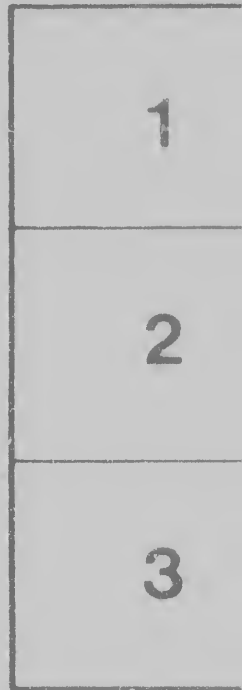
pages wholly or partially obscured by errata
slips, tissues, etc., have been refilmed to
ensure the best possible image/
les pages totalement ou partiellement
obscurcies par un feuillet d'errata, une pelure,
etc., ont été filmées à nouveau de façon à
obtenir la meilleure image possible.

right and top to bottom
required. The following
method:



top to bottom, as many frames as
The following diagrams illustrate the

de l'angle supérieur gauche, de ga
et de haut en bas, en prenant le n
d'images nécessaire. Les diagram
illustrent la méthode.



gauche, de gauche à droite,
prenant le nombre
Les diagrammes suivants

1

2

3

being it, for
for supplies
artificially, a
ply of the re-
made a cover
Subit of con-
premise to
entirely, that
by, the 1900
1900

1900

to be used in the collection of any duty, usually exported from from which he may choose to bring it, for any quantity which you may deem necessary for consumption, beyond your interior supplies. Inclosing to the Secretary of the Treasury, at the same time, a duplicate of the certificate, as a check on the falsification of your signature. In this way we may ensure a supply of the real wants of your citizens, and at the same time prevent these wants from being made a cover for the crimes against their country, which unprincipled adventurers are in the habit of committing. I trust too, that your Excellency will find an apology for the trouble I propose to give you, in that desire which you must feel in common with all our worthy citizens, that inconveniences encountered cheerfully by them for the interests of their country, should not be turned merely to the unlawful profits of the most worthless part of society.

TH. JEFFERSON

ause to
our inte-
te of the
re a sup-
m being
re in the
rouble I
e worthy
in com-
society