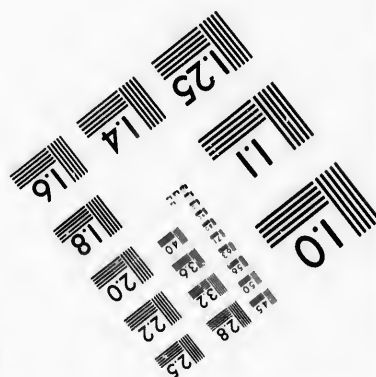
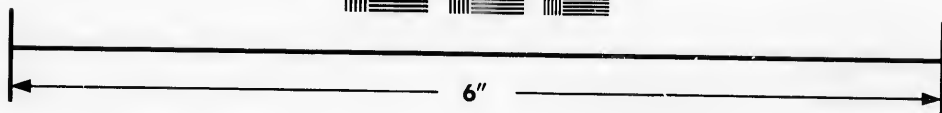
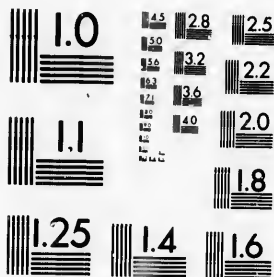


**IMAGE EVALUATION
TEST TARGET (MT-3)**



**Photographic
Sciences
Corporation**

23 WEST MAIN STREET
WEBSTER, N.Y. 14580
(716) 872-4503



**CIHM/ICMH
Microfiche
Series.**

**CIHM/ICMH
Collection de
microfiches.**



Canadian Institute for Historical Microreproductions / Institut canadien de microreproductions historiques



© 1986

The copy filmed here has been reproduced thanks to the generosity of:

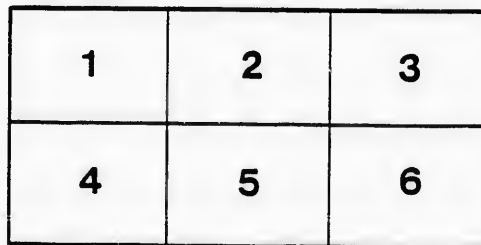
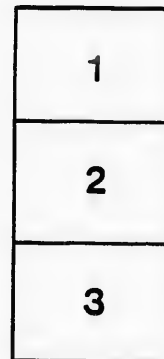
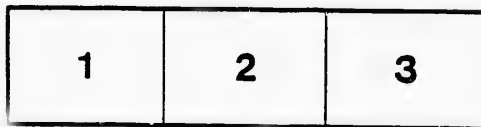
Manuscript Division
Public Archives of Canada

The images appearing here are the best quality possible considering the condition and legibility of the original copy and in keeping with the filming contract specifications.

Original copies in printed paper covers are filmed beginning with the front cover and ending on the last page with a printed or illustrated impression, or the back cover when appropriate. All other original copies are filmed beginning on the first page with a printed or illustrated impression, and ending on the last page with a printed or illustrated impression.

The last recorded frame on each microfiche shall contain the symbol \rightarrow (meaning "CONTINUED"), or the symbol ∇ (meaning "END"), whichever applies.

Maps, plates, charts, etc., may be filmed at different reduction ratios. Those too large to be entirely included in one exposure are filmed beginning in the upper left hand corner, left to right and top to bottom, as many frames as required. The following diagrams illustrate the method:



L'exemplaire filmé fut reproduit grâce à la générosité de:

Division des manuscrits
Archives publiques du Canada

Les images suivantes ont été reproduites avec le plus grand soin, compte tenu de la condition et de la netteté de l'exemplaire filmé, et en conformité avec les conditions du contrat de filmage.

Les exemplaires originaux dont la couverture en papier est imprimée sont filmés en commençant par le premier plat et en terminant soit par la dernière page qui comporte une empreinte d'impression ou d'illustration, soit par le second plat, selon le cas. Tous les autres exemplaires originaux sont filmés en commençant par la première page qui comporte une empreinte d'impression ou d'illustration et en terminant par la dernière page qui comporte une telle empreinte.

Un des symboles suivants apparaîtra sur la dernière image de chaque microfiche, selon le cas: le symbole \rightarrow signifie "A SUIVRE", le symbole ∇ signifie "FIN".

Les cartes, planches, tableaux, etc., peuvent être filmés à des taux de réduction différents. Lorsque le document est trop grand pour être reproduit en un seul cliché, il est filmé à partir de l'angle supérieur gauche, de gauche à droite, et de haut en bas, en prenant le nombre d'images nécessaire. Les diagrammes suivants illustrent la méthode.

rrata
co

elure.
n à

32X

Unto the Right Honourable the Lords Commissioners of Her Majesty's Treasury, The humble Memorial of the Members of the Emigration Societies in Glasgow and its Vicinity, Showeth,

That your Memorialists are enduring severe privations from want of employment and lowness of wages, rendering them unable to provide for themselves and families, without being regular receivers of Public Charity. That your Memorialists are unable to point out any particular cause as the source of those evils, and would willingly believe they are of a temporary nature, removable by temporary expedients, but they have reason to apprehend that instead of diminishing they will gradually increase, unless prevented by a generous application of a full and effectual remedy; and this, they consider, can only be done by a portion of them Emigrating to Canada, where they would be more comfortable on the fruits of their industry.

That your Memorialists humbly conceive, that if the many great sums that have been expended in aid of the Unemployed, had been devoted to promote Emigration, they would have been more comfortable, and the country relieved of a burden; whereas the relief has been received, and the poor recipients are as needful as ever.

That your Memorialists have resolved on petitioning Parliament for assistance to enable them to Emigrate, and their petition has already received the signatures of many thousands of the middle and upper classes, all of whom declare that your Memorialists have no other hope than by Emigrating to Canada; but before presenting the petition to Parliament, your Memorialists humbly and respectfully lay their wants and desires before your Lordships, feeling satisfied that you will apply the remedy, if convinced of the necessity of doing so.

Your Memorialists beg to state, that the Clergy, Magistrates, and Citizens of Glasgow are making great exertions to raise money to provide for their wants on arrival in Canada, but they feel assured that notwithstanding all this interest in their behalf, they will not be able to realise a sufficiency both to pay the expenses of the voyage, and to provide for them afterwards; and therefore if your Memorialists may be allowed to offer a suggestion, they humbly pray that your Lordships will grant them Ships and Provisions to carry them across the Atlantic, and they feel confident with such aid, they would not land destitute, and be a burden upon their brethren in America.

Your Memorialists respectfully refer to the annexed list detailing the particulars of the Twenty-Eight Societies, wishing to Emigrate to Canada.

May it therefore please your Lordships to take this Memorial into consideration, and to grant the Memorialists such relief by Emigration as to your Lordships shall seem proper,

And your Memorialists will ever pray.

(Signed) JAMES MACKERSIE, *President.*

LIST OF EMIGRATION SOCIETIES.

| NAME. | Heads of Families. | | Number Unmarried above 14 years. | | Children 7 to 14. | | Children under 7. | | Total of Society. | |
|--|--------------------|----------|----------------------------------|----------|-------------------|----------|-------------------|----------|-------------------|----------|
| | Males. | Females. | Males. | Females. | Males. | Females. | Males. | Females. | Males. | Females. |
| 1. Glasgow Hand-Loom Weavers' Society, | 10 | 10 | 6 | 5 | 5 | 7 | 5 | 5 | 26 | 27 |
| 2. Glasgow Philanthropic Colonisation,.... | 27 | 27 | 13 | 5 | 11 | 17 | 19 | 17 | 70 | 66 |
| 3. Glasgow North Quarter,..... | 20 | 15 | 4 | 2 | 9 | 9 | 12 | 5 | 45 | 31 |
| 4. Glasgow Protestant,..... | 20 | 19 | 6 | 4 | 13 | 11 | 9 | 11 | 49 | 44 |
| 5. Glasgow and Mile-End,..... | 34 | 32 | 22 | 28 | 18 | 22 | 20 | 26 | 94 | 108 |
| 6. Glasgow Calton and Greenhead,..... | 10 | 11 | 1 | 1 | 7 | 5 | 6 | 7 | 23 | 25 |
| 7. Glasgow Scottish,..... | 7 | 7 | 2 | 5 | 3 | 4 | 6 | 2 | 18 | 18 |
| 8. Glasgow and Lanarkshire,..... | 25 | 22 | 6 | 5 | 16 | 13 | 17 | 13 | 64 | 53 |
| 9. Bridgeton,..... | 32 | 34 | 24 | 19 | 19 | 17 | 19 | 28 | 94 | 98 |
| 10. Bridgeton and Clydesdale,..... | 25 | 23 | 8 | 13 | 9 | 7 | 10 | 20 | 52 | 63 |
| 11. Bridgeton District,..... | 35 | 32 | 16 | 23 | 18 | 13 | 19 | 23 | 88 | 91 |
| 12. Clayknowes,..... | 35 | 30 | 13 | 2 | 27 | 15 | 28 | 28 | 103 | 75 |
| 13. Woodside and Oakbank,..... | 28 | 28 | 11 | 5 | 10 | 11 | 15 | 18 | 65 | 61 |
| 14. Milton and St. George,..... | 10 | 12 | 2 | 3 | 5 | 4 | 6 | 10 | 23 | 29 |
| 15. St. George's Parish,..... | 14 | 15 | 5 | 5 | 7 | 5 | 8 | 8 | 32 | 35 |
| 16. Mile-End,..... | 34 | 33 | 4 | 7 | 12 | 16 | 22 | 14 | 72 | 70 |
| 17. West of Tradoston,..... | 29 | 22 | 16 | 17 | 15 | 10 | 11 | 21 | 70 | 71 |
| 18. British American Association,..... | 27 | 21 | 6 | 8 | 10 | 11 | 11 | 15 | 54 | 55 |
| 19. Calton Canadian Village,..... | 40 | 40 | 27 | 27 | 21 | 19 | 31 | 39 | 119 | 125 |
| 20. Glasgow East Quarter Caledonian,..... | 28 | 28 | 5 | 2 | 18 | 17 | 13 | 12 | 64 | 59 |
| 21. Govan Village,..... | 21 | 12 | 5 | 11 | 9 | 6 | 11 | 9 | 46 | 38 |
| 22. Glasgow Union,..... | 10 | 9 | 8 | 9 | 11 | 7 | 9 | 7 | 38 | 32 |
| 23. Tradoston Operative,..... | 50 | 43 | 8 | 14 | 6 | 12 | 28 | 31 | 92 | 100 |
| 24. Parkhead,..... | 31 | 30 | 21 | 30 | 19 | 17 | 26 | 14 | 97 | 91 |
| 25. Camlachie,..... | 28 | 25 | 24 | 11 | 18 | 11 | 10 | 18 | 80 | 65 |
| 26. Partick Canadian,..... | 16 | 13 | 3 | 2 | 10 | 7 | 8 | 14 | 37 | 36 |
| 27. Western Christian,..... | 14 | 13 | 16 | 17 | ... | ... | ... | ... | 29 | 36 |
| 28. Stevenson Street Calton,..... | 25 | 25 | 10 | 12 | 9 | 11 | 9 | 7 | 53 | 55 |
| | | | | | | | | | 1697 | 1657 |

In all 3354.

S

w
C
th

S
th
G
fo

ar
co
tir

wh
sid
tio
Ca

en
in

GLASGOW, 4th January, 1843.

SIR,

We take the liberty to call your attention to the annexed copy of the Memorial, which will be presented to Government, for assistance to enable the Societies referred to, to Emigrate to Canada; and we trust you will add your valuable services in enabling the Committee to carry out their plans for assisting these poor people.

During last year the Societies were formed individually; and they endeavoured to raise Subscriptions for themselves separately: but it was afterwards recommended by several Gentlemen, that the whole should be formed into a "UNION," in order that application should be made to Government and the Public for them in a body, so that private individuals should not be harassed for Subscriptions by each Society.

The Committee therefore recommend these Societies to the benevolence of the Public. They are a body of industrious and deserving people, who are driven by necessity to leave their native country; and there is no doubt but they will add to the prosperity of Canada, and at the same time benefit themselves and their families.

The Memorial to Government is supported by the Members for the County and the Districts, who will urge the Government to grant the request to aid them with ships and provisions; but besides any assistance the Government may think proper to give, it will require a large sum in addition to provide the necessaries of the Voyage, and enable the Societies to support themselves in Canada until employment or other means can be provided for them.

Under these circumstances, it is hoped the Public will sympathise with these poor people, and enable the Committee and those who have taken an interest in their welfare, to carry out the objects in view.

We are,

SIR,

Your obedient Servants,

CHARLES CUNNINGHAM,
ALEXANDER G. GILKISON,
Secretaries.

