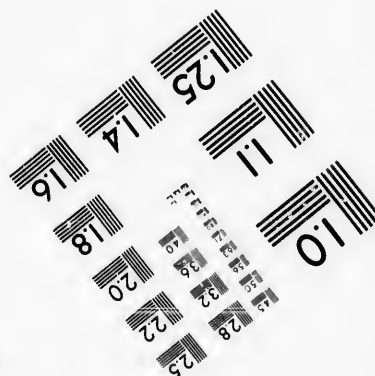
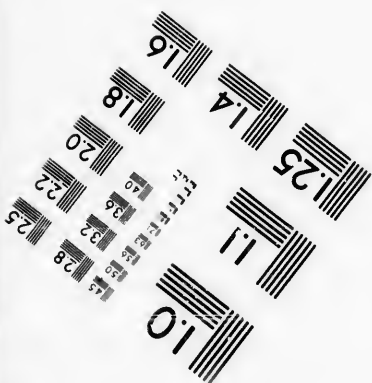
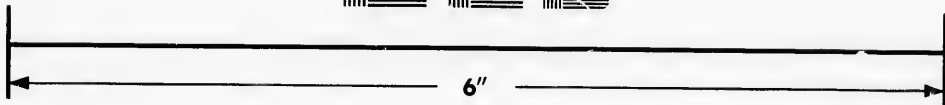
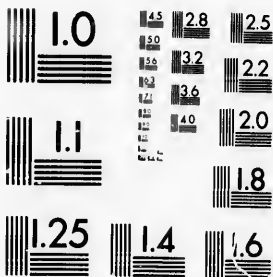


**IMAGE EVALUATION  
TEST TARGET (MT-3)**



**Photographic  
Sciences  
Corporation**

23 WEST MAIN STREET  
WEBSTER, N.Y. 14580  
(716) 872-4503

**CIHM/ICMH  
Microfiche  
Series.**

**CIHM/ICMH  
Collection de  
microfiches.**



**Canadian Institute for Historical Microreproductions / Institut canadien de microreproductions historiques**

**© 1986**



The copy filmed here has been reproduced thanks to the generosity of:

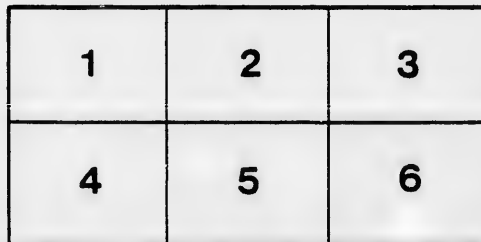
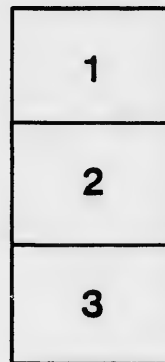
D. B. Weldon Library  
University of Western Ontario  
(Regional History Room)

The images appearing here are the best quality possible considering the condition and legibility of the original copy and in keeping with the filming contract specifications.

Original copies in printed paper covers are filmed beginning with the front cover and ending on the last page with a printed or illustrated impression, or the back cover when appropriate. All other original copies are filmed beginning on the first page with a printed or illustrated impression, and ending on the last page with a printed or illustrated impression.

The last recorded frame on each microfiche shall contain the symbol  $\rightarrow$  (meaning "CONTINUED"), or the symbol  $\nabla$  (meaning "END"), whichever applies.

Maps, plates, charts, etc., may be filmed at different reduction ratios. Those too large to be entirely included in one exposure are filmed beginning in the upper left hand corner, left to right and top to bottom, as many frames as required. The following diagrams illustrate the method:



L'exemplaire filmé fut reproduit grâce à la générosité de:

D. B. Weldon Library  
University of Western Ontario  
(Regional History Room)

Les images suivantes ont été reproduites avec le plus grand soin, compte tenu de la condition et de la netteté de l'exemplaire filmé, et en conformité avec les conditions du contrat de filmage.

Les exemplaires originaux dont la couverture en papier est imprimée sont filmés en commençant par le premier plat et en terminant soit par la dernière page qui comporte une empreinte d'impression ou d'illustration, soit par le second plat, selon le cas. Tous les autres exemplaires originaux sont filmés en commençant par la première page qui comporte une empreinte d'impression ou d'illustration et en terminant par la dernière page qui comporte une telle empreinte.

Un des symboles suivants apparaîtra sur la dernière image de chaque microfiche, selon le cas: le symbole  $\rightarrow$  signifie "A SUIVRE", le symbole  $\nabla$  signifie "FIN".

Les cartes, planches, tableaux, etc., peuvent être filmés à des taux de réduction différents. Lorsque le document est trop grand pour être reproduit en un seul cliché, il est filmé à partir de l'angle supérieur gauche, de gauche à droite, et de haut en bas, en prenant le nombre d'images nécessaire. Les diagrammes suivants illustrent la méthode.

Grand Opera House.

**JOHN E. YOUNG**  
**Merry Opera Company.**

ROBT. KANE, MANAGER.

35

PEOPLE



35

PEOPLE

**ONE SOLID WEEK**

Commencing Monday, **Feb. 19**  
Matinees Wednesday and Saturday.

# JOHN E. YOUNG

AND HIS

## MERRY OPERA CO'Y

MINNIE JARBEAU.....Prima Donna Soprano.  
MAMIE SCOTT.....Prima Donna Soubrette.  
LAURA RUSSELL.....Characters.  
ARLINE ARLING....."  
ROBERT DUNBAR.....Leading Tenor.  
GEORGE OLMI.....Leading Baritone.  
TOM WHYTE.....Comedian.  
VICTOR DELACEY.....Characters.  
ED. MAYO.....Baritone.

— AND —

### **JOHN E. YOUNG.**

ELLA GARNHARDT.	JOHN CRANE.
BEATRICE GORDON.	JOS. LESTER.
GLADYA JUDSON.	FRANK BELVILLE.
JENNIE VERDI.	HARRY STONE.
LELIA THORNE.	JULES OSWOOD.
NELLIE GREY.	JAMES IRVING.
LILLIE HALL.	HARRY LE CLAIR.
CLARA FORBES.	JOHN FLOOD.
JOSIE TAYLOR.	
MARGUERITE KOSTER.	
JESSIE IRWIN.	
VIOLA BELMONT.	

# REPERTOIRE

---

MONDAY  
EVENING { SAID PASHA

---

TUESDAY  
EVENING { LA MASCOT

---

WEDNESDAY  
EVENING { CHIMES of Normandy

---

THURSDAY  
EVENING { BOCCACIO

---

FRIDAY  
EVENING { FRA DIAVOLA

---

SATURDAY  
EVENING { BOHEMIAN GIRL

---

Saturday Matinee, BILLEE TAYLOR

Wednesday " GIROFLE-GIROFLA

---

Music under direction E. HULL.

Popular Prices — Reserved Seats at Opera House.

# From the Press.

---

Mr. Young and his company closed their season of twelve weeks at Lakeview Park last night. There was a packed house. Mr. Young was called before the curtain and made a brief speech in his usual humorous manner. The patrons of the Park have appreciated the efforts of the company in giving first-class performances in every detail, and express regret that the season has drawn to a close. There is a universal opinion that it is the best opera company that has ever appeared at the Park.—*Lowell Sun.*

---

The Theatre was so full last night that there was not room even for a small-sized doubt. People who came early got seats, others stood, and, not infrequently, imagined that their neighbors' feet were intended for sidewalks. If a man in the gallery by any chance got his arm above his head it was a physical impossibility for him to lower it again to its proper place. It seemed that everybody in town was anxious to hear the initial performance of John E. Young's Merry Opera Company, which last night made its bow to a Quebec audience. The first presentation was Said Pasha, and if the value of an entertainment can be judged by the applause it receives, this one must be of the highest quality. The audience was most enthusiastic and the singers were often recalled.—*Quebec Chronicle.*

---

The production, last night, of Said Pasha, by John E. Young and his Merry Opera Company, with all accessories, beautiful scenery and costumes, attracted an audience which completely filled the house. The company is excellent and well balanced, and the chorus is not only strong, but the men and women who compose it are attractive, the ladies being especially graceful.—*Philadelphia Times.*



