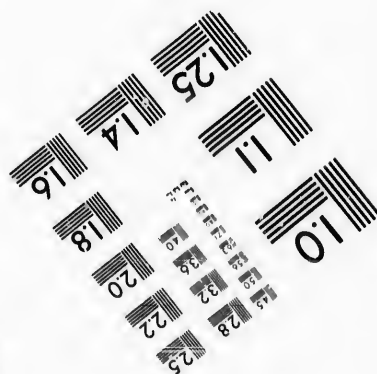
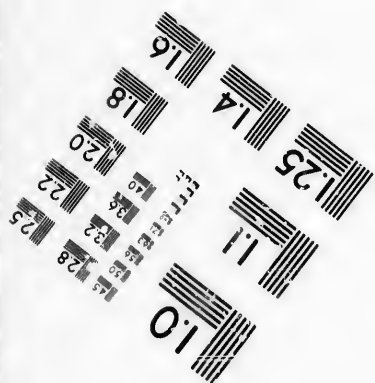
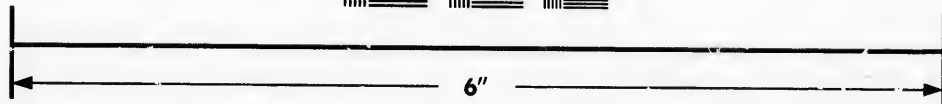
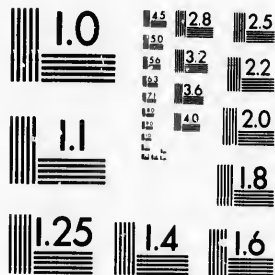


**IMAGE EVALUATION
TEST TARGET (MT-3)**



**Photographic
Sciences
Corporation**

23 WEST MAIN STREET
WEBSTER, N.Y. 14580
(716) 872-4503

15 28 25
12 18 22
10 20
118

**CIHM/ICMH
Microfiche
Series.**

**CIHM/ICMH
Collection de
microfiches.**



Canadian Institute for Historical Microreproductions / Institut canadien de microreproductions historiques

10
57

© 1986

Technical and Bibliographic Notes/Notes techniques et bibliographiques

The Institute has attempted to obtain the best original copy available for filming. Features of this copy which may be bibliographically unique, which may alter any of the images in the reproduction, or which may significantly change the usual method of filming, are checked below.

L'Institut a microfilmé le meilleur exemplaire qu'il lui a été possible de se procurer. Les détails de cet exemplaire qui sont peut-être uniques du point de vue bibliographique, qui peuvent modifier une image reproduite, ou qui peuvent exiger une modification dans la méthode normale de filmage sont indiqués ci-dessous.

- | | |
|---|---|
| <input type="checkbox"/> Coloured covers/
Couverture de couleur | <input type="checkbox"/> Coloured pages/
Pages de couleur |
| <input type="checkbox"/> Covers damaged/
Couverture endommagée | <input type="checkbox"/> Pages damaged/
Pages endommagées |
| <input type="checkbox"/> Covers restored and/or laminated/
Couverture restaurée et/ou pelliculée | <input type="checkbox"/> Pages restored and/or laminated/
Pages restaurées et/ou pelliculées |
| <input type="checkbox"/> Cover title missing/
Le titre de couverture manque | <input checked="" type="checkbox"/> Pages discoloured, stained or foxed/
Pages décolorées, tachetées ou piquées |
| <input type="checkbox"/> Coloured maps/
Cartes géographiques en couleur | <input type="checkbox"/> Pages detached/
Pages détachées |
| <input type="checkbox"/> Coloured ink (i.e. other than blue or black)/
Encre de couleur (i.e. autre que bleue ou noire) | <input checked="" type="checkbox"/> Showthrough/
Transparence |
| <input type="checkbox"/> Coloured plates and/or illustrations/
Planches et/ou illustrations en couleur | <input type="checkbox"/> Quality of print varies/
Qualité inégale de l'impression |
| <input type="checkbox"/> Bound with other material/
Relié avec d'autres documents | <input type="checkbox"/> Includes supplementary material/
Comprend du matériel supplémentaire |
| <input type="checkbox"/> Tight binding may cause shadows or distortion along interior margin/
La reliure serrée peut causer de l'ombre ou de la distorsion le long de la marge intérieure | <input type="checkbox"/> Only edition available/
Seule édition disponible |
| <input type="checkbox"/> Blank leaves added during restoration may appear within the text. Whenever possible, these have been omitted from filming/
Il se peut que certaines pages blanches ajoutées lors d'une restauration apparaissent dans le texte, mais, lorsque cela était possible, ces pages n'ont pas été filmées. | <input type="checkbox"/> Pages wholly or partially obscured by errata slips, tissues, etc., have been refilmed to ensure the best possible image/
Les pages totalement ou partiellement obscurcies par un feuillet d'errata, une pelure, etc., ont été filmées à nouveau de façon à obtenir la meilleure image possible. |
| <input checked="" type="checkbox"/> Additional comments: /
Commentaires supplémentaires: | [Printed ephemera] [4] p. There are some creases in the middle of the pages. |

This item is filmed at the reduction ratio checked below/
Ce document est filmé au taux de réduction indiqué ci-dessous.

10X	14X	18X	22X	26X	30X
<input type="checkbox"/>	<input type="checkbox"/>	<input type="checkbox"/>	<input type="checkbox"/>	<input checked="" type="checkbox"/>	<input type="checkbox"/>
12X	16X	20X	24X	28X	32X

The copy filmed here has been reproduced thanks to the generosity of:

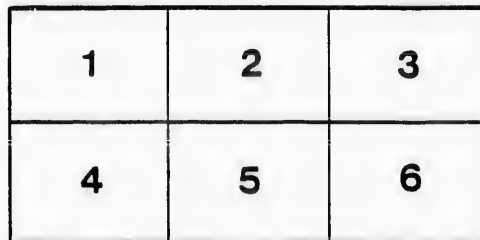
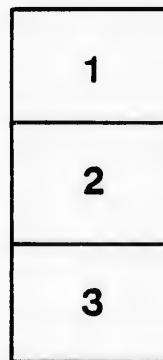
D. B. Weldon Library
University of Western Ontario
(Regional History Room)

The images appearing here are the best quality possible considering the condition and legibility of the original copy and in keeping with the filming contract specifications.

Original copies in printed paper covers are filmed beginning with the front cover and ending on the last page with a printed or illustrated impression, or the back cover when appropriate. All other original copies are filmed beginning on the first page with a printed or illustrated impression, and ending on the last page with a printed or illustrated impression.

The last recorded frame on each microfiche shall contain the symbol \rightarrow (meaning "CONTINUED"), or the symbol ∇ (meaning "END"), whichever applies.

Maps, plates, charts, etc., may be filmed at different reduction ratios. Those too large to be entirely included in one exposure are filmed beginning in the upper left hand corner, left to right and top to bottom, as many frames as required. The following diagrams illustrate the method:



L'exemplaire filmé fut reproduit grâce à la générosité de:

D. B. Weldon Library
University of Western Ontario
(Regional History Room)

Les images suivantes ont été reproduites avec le plus grand soin, compte tenu de la condition et de la netteté de l'exemplaire filmé, et en conformité avec les conditions du contrat de filmage.

Les exemplaires originaux dont la couverture en papier est imprimée sont filmés en commençant par le premier plat et en terminant soit par la dernière page qui comporte une empreinte d'impression ou d'illustration, soit par le second plat, selon le cas. Tous les autres exemplaires originaux sont filmés en commençant par la première page qui comporte une empreinte d'impression ou d'illustration et en terminant par la dernière page qui comporte une telle empreinte.

Un des symboles suivants apparaîtra sur la dernière image de chaque microfiche, selon le cas: le symbole \rightarrow signifie "A SUIVRE", le symbole ∇ signifie "FIN".

Les cartes, planches, tableaux, etc., peuvent être filmés à des taux de réduction différents. Lorsque le document est trop grand pour être reproduit en un seul cliché, il est filmé à partir de l'angle supérieur gauche, de gauche à droite, et de haut en bas, en prenant le nombre d'images nécessaire. Les diagrammes suivants illustrent la méthode.

ails
du
difier
une
page

rata
o

elure,
à

32X

MICHIGAN, OHIO
 CANADIAN CIRCUIT
 EIGHTEEN
 THEATRES

CLEVELAND, CINCINNATI, BUFFALO,
 DETROIT, TORONTO,
 TOLEDO, LONDON, HAMILTON,
 WOODSTOCK, SAGINAW,
 GRAND RAPIDS, BAY CITY AND
 JACKSON.



Grand OPERA HOUSE London.

C. J. WHITNEY. A. E. ROOTE. ONTARIO:
 LESSEE. MANAGER.



W. SMITH. E. HOLLAND. W. S. PARTRIDGE.

SMITH & BROS.

THE
 LEADING
 SANITARY
 PLUMBERS
 AND
 HEATING
 ENGINEERS
 OF
 WESTERN
 ONTARIO.

376
 RICHMOND STREET, LONDON.
 OPPOSITE GRAND OPERA HOUSE BUILDING.

A full stock of Supplies always on hand.

TELEPHONE 538.

(London Printing and Litho. Co.)

LADIES! THE ONLY WAY TO GET HELP IS THROUGH THE "FREE PRESS" WANT COLUMN.



**Parisian
Steam
Laundry**

73 & 75 DUNDAS STREET.

BRANCH OFFICES:

226 Dundas St. 752 Waterloo. 410 Hamilton Rd.
280 " " 572 Pall Mall. 261 Wellington.
310 " " 390 Richmond. 338 Ridout.
322 " " 485 " "

J. K. SPRY, Manager.

HUESTON'S

**LIVERY,
Coupe & Cab Stables**
WELLINGTON STREET.

Finest Horses and Carriages in the City.
OPEN DAY AND NIGHT. TELEPHONE 441.

ROBT. HUESTON,
Proprietor.

H. McKENNA,
—FOR—

Choice Cigars, Tobaccos
AND PIPES.

ALWAYS OPEN
..... AFTER THE OPERA.

225 DUNDAS STREET.

SPRING



1894.

WE have just received the finest assortment of Spring Hats ever shown in the city. We are leaders for correct shapes, try us. A pleasure to show goods.

Rivard

LONDON'S
FASHIONABLE
HATTER AND
FURRIER

400 RICHMOND
STREET.

WILLIAMS' Pianos CANADA'S FAVORITE

Cannot be excelled for touch, singing quality, delicacy and great power of tone, with highest excellence of workmanship.

ALL THE LATEST VOCAL AND INSTRUMENTAL MUSIC RECEIVED AS PUBLISHED.

Musical Instruments of all kinds, Strings and Fittings
AT LOWEST PRICES.

R. S. WILLIAMS & SON, 171 DUNDAS STREET,
LONDON, ONT.
J. A. CRODEN, Manager.

PROGRAMME

SATURDAY MATINEE, MARCH 17,
— ENGAGEMENT OF — 1894

Marie Wainwright

Under the direction of Julian Magnus.

Tom Taylor's Comedy, in Three Acts,
entitled,

An Unequal Match

CAST OF CHARACTERS.

Dr. Boerhaave Botcherly. Barton Hill
Harry Arneliffe. Nathaniel Hartwig
Sir Sowerby Honeywood. Ernest Foster
Blenkinsop. Edward Poland
Grazebrook. Alfred Burnham
Tofts. Cecil Magnus
Untermedicus Prof. M. Cecil
Herr Dummkopf. John Borden
Ober-Kellner. Leavitt James

Waiters, Guests and Water Girls.

Mrs. Topham Montessor. Miss Louise Muldener
Lady Honeywood. Miss Georgia Busby
Bessy Hebblethwaite. Miss Jennie Northern
Lady Curlewis. Miss Dorothy Thornton

—AND—

HESTER GRAZEBROOK. Miss WAINWRIGHT

SYNOPSIS.

Scene in ACT I.—A Village in Glazedale, Yorkshire.
Scene in ACT II.—At Arneliffe Manor.
Scene in ACT III.—At a German Watering-place.

(Programme continued on next page.)

SOMETHING NEW.

Opera English & Canadian
Caramels. Chocolate Creams.

VERY FINEST French Crystalized FRUITS. Olives in Bulk.
.. Fresh Roquefort Cheese..

FITZGERALD, SCANDRETT & CO.
169 Dundas Street.

ESTABLISHED 1831.

H. DAVIS & SON,
WATCHMAKERS
AND
JEWELLERS

DEALERS IN

Watches, Clocks, Jewellery, Spectacles,
Silver Plated Ware, &c.

170 DUNDAS ST., LONDON, ONT.

W. T. STRONG

Dispensing
Chemist,

184 Dundas Street,
LONDON, - ONTARIO.

BROWN,



145 Dundas Street.

OUR aim has been to steadily increase our business by the excellence of our goods and the low price at which we sell them; and we are pleased to tell our patrons that we have succeeded beyond our highest expectations. The reputation enjoyed by Brown's Shoe Store as the leader in

First-Class, Stylish, Fine Footwear has been well earned.

Our 1894 Spring and Summer Stock will contain all the Latest Designs from the leading American and Canadian Houses, and will combine the Novel with the Serviceable.

THE FOLLOWING ARE SOME OF OUR NEWEST:—
FOR LADIES:

"The Prince Edna," "Lapelle," "Eugene"
"Jacquette," "Eulalia," "Summer" (six large button), "Bluerette,"
"White Stitched Oxford, with French Heel" (very pretty).

FOR GENTLEMEN:

"New York Razor Toe Wlug Tip,"
IN PATENT AND TAN.
"Abington," Turned Sole Bal.
(A VERY NICE DRESS SHOE.)
"Harvard," Calf Bal.,
IN TAN AND BLACK.
"Opera," "Bon-Ton," "Old London."

We have also full lines of staple goods of the highest grade, and in our Heavy Boot Department we sell ten per cent. cheaper than similar goods can be bought for elsewhere. In Boys', Girls and Babies' Shoes, we carry a great variety in all grades, calculated to meet every requirement for school, play and dress.

See our Windows. Inspect our Goods. Ascertain our Prices.

BROWN.
TELEPHONE 881.

IF YOU WANT THE BEST TAKE THE "FREE PRESS." ALL THE NEWS!

— TRY —
SOUTHCOTTS
 FOR Nice Suit
 Fancy Vest
 ..OR Trousers
 NEAT LINE OF LIGHT-WEIGHT OVERCOATINGS IN STOCK.
Satisfaction Assured. Prices Right.
361 RICHMOND STREET.

I-I-I-I-I-I-I-I-I-I

PRINTERS
 LITHOGRAPHERS
 ENGRAVERS

The _____
London
Printing and
Lithographing
Co'y,

SUCCESSORS TO FREE PRESS
 PRINTING AND LITHO.
 DEPARTMENTS.

"FREE PRESS"
 BUILDING.

BEST WORK
 AT MODERATE
 PRICES.

I-I-I-I-I-I-I-I-I-I

TECUMSEH HOUSE

LONDON.



Directly opposite G.T.R. depot;
 street railway past the doors;
 convenient to all the wholesale
 and retail business houses of
 city, making it the most desir-
 able hotel in the city; elevator,
 and heated throughout with
 steam.

Porter in attendance on
 arrival of all trains.

RATES, \$2.00 AND \$2.50
 PER DAY,

ACCORDING TO LOCATION.

No Extra Charge For Baggage.

C. W. DAVIS, PROP.

Gentlemen:
 SEE OUR LEADING
SPRING HAT

For \$2.00.

In Colored and Black.

GRAHAM BROS.,

LEADING HATTERS
 AND FURNISHERS, / **159 DUNDAS**
 ST.

«Programme Continued.»

Marie Wainwright

Under the direction of Julian Magnus.

Saturday Evg., March 17, 1894

AUGUSTIN DAILY'S Powerful Drama, in Five Acts,
 entitled,

MAN and WIFE

(From Wilkie Collins' Romance.)

CAST OF CHARACTERS.

Sir Patric Landie, "a gentleman of the bygone times" Mr. Barton Hill
 Geoffrey Delamayn Mr. Nathaniel Hartwig
 Arnold Brinkworth, his friend Mr. Ernest Foster
 Mr. Moy, his solicitor Mr. Alfred Burnham
 Bishopriggs, "with one eye moist and merry"
 Mr. Edward Poland
 Brown, of the "Choral Gentlemen" Mr. Cecil Magnus
 Jonathan, who knew "where he would go if he told a lie"
 Mr. Leavitt James
 Perry, the trainer Mr. C. Magnus
 John Thomas, the groom Mr. John Borden
 Lady Lundie Miss Louise Muldener
 Blanche Lundie, Sir Patrick's niece Miss Jennie Northern
 Mrs. Glenarm, the wealthy widow Miss Georgia Busby
 Hester Detheridge, the dumb servant Miss Dorothy Thornton

—AND—
 ANNE SYLVESTER Miss WAINWRIGHT

ACT I.—The Park at Windygates. The Marriage. ACT II.
 —The Anteroom at Windygates. The Craig Fernie Inn.
 The Storm ACT III.—Tableau 1—Library at Windy-
 gates. Tableau 2—The Swan-Haven Retreat. The Denial.
 NOTE.—The curtain will be lowered for a few moments between
 these Tableaux. The audience is requested to remain seated.
 ACT IV.—Portland Place, London. The Personal Inquiry.
 ACT V.—The Papered Room at Salt Patch. Death of
 Geoffrey Delamayn.

EXECUTIVE STAFF:

Business Manager Fred Meek
 Stage Manager Alfred Burnham
 Prompter Cecil Magnus

All the plays have been staged by Mr. Barton Hill,
 Miss Wainwright's costumes from Mme. Smith, 55 W 25th St., N. Y.
 (Programme continued on last page.)

McLEAN'S HARDWARE

— FOR —

Bissell's Carpet Sweepers.

WE CAN SHOW YOU TWELVE DIFFERENT STYLES SAME
 AS ARE NOW DISPLAYED BY THE BISSELL COM-
 PANY AT THE WORLD'S FAIR.

CALL AND SEE THESE GOODS

— AT —

McLEAN'S HARDWARE,
151 Dundas Street.

Wm. Stevely & Son,

— THE LEADING DEALERS IN —

STOVES, RANGES,

.. AND ..

HOUSE FURNISHING GOODS.

OUR STOCK IS THE LARGEST.

OUR PRICES THE LOWEST.

362 RICHMOND STREET.

PHONE 452.

W. T. STRONG,

Dispensing

Chemist,

184 DUNDAS ST.,

LONDON, ONT.

.. FOR ..

Fine Etchings....

—AND—

Engravings

—TRY—

O. B. GRAVES,

222 DUNDAS STREET.

**A WONDER-
 WORKING**



Quarter!

— IS A —

25 CENT PIECE

INVESTED IN **3 Elegant**

GROTTO

BOUQUET

CIGARS

OF QUALITY AND AROMA, MADE OF
 EXCELLENT

HABANA FILLER,

Very Mild and Delicious.

BRENER BROS.

OLD STAMPS WANTED

All kinds of Canadian, Nova Scotia, New Brunswick, Prince Edward Island, British Columbia, Newfoundland and Un-
 1869 are val-
 we desire to
 prompt on the
 cent to \$10.00
 according to
 are more ac-
 left on original
 Do not cut
 up your old
 recently paid
 dred dollars for
 it will pay you.
 and we will remit
 stamps now in use are not wanted. If you have no
 old letters you may have some friends that have. You
 will confer a favor on both them and us by calling their
 attention to this. Write now; do not delay.



L. M. STAEBLER,
 185 1/2 Dundas Street, . . . LONDON, CANADA.
 (Mention this Paper.)

FIND YOUR FORTUNE IN LUCKY
SANTO DOMINGO

INVESTMENT BONDS guaranteed by the **SANTO DOMINGO GUARANTY CO.**

Allotments take place monthly, and are payable in U. S. gold coin in sums of \$160,000, \$40,000, \$20,000, etc. 5,692 Bonds paid monthly, aggregating \$574,850. Subscription fees, \$10, \$5, \$2, \$1, 50c. and 25c.

Apply to Local Agents, or address,
ANTONIO MORA, CITY OF SANTO DOMINGO, SANTO DOMINGO.

EDY BROS.

The Artistic Photographers,

—RECEIVED—

Three First Prizes

—AND—

DIPLOMA

For Finest Display of Photography
 AT WESTERN FAIR, 1893.

Cabinet Photos, \$3 per doz.

EDY BROS.,

214 DUNDAS STREET.

«Programme Concluded.»

During the evening, incidental to the stage performance, the ORCHESTRA of the Grand Opera House, under the direction of MR. FRED. L. EVANS, will perform the following selections

- OVERTURE—"Martha," Flotow
- RUSSIAN MAZURKA—"La Czarine," Ganne
- VISIONS IN A DREAM—(Descriptive), Lumbye
- GALOP—"Tarif," Schacht

The above programme subject to transposition

N. B.—The Orchestra of the Grand Opera House may be secured for engagements outside the theatre, by applying at or addressing the Box Office.

The Furniture used on stage is supplied by JOHN FERGUSON & SON, Furniture Manufacturers.

NEXT + ATTRACTION

Monday, March 19th,
GEORGE GROSSMITH

In his inimitable musical recital.

PART 1—The Art of Entertaining.

PART 2—How I Discovered America.

In this Mr. Grossmith will introduce the following original songs: "The American Girl," "I'm His Daisy," "The Paderewski Craze."

PART 3—Humorous Illustrations and Imitations.

Mr. Grossmith will accompany himself on a Steinway Grand Piano. The king of entertainers.

PRICES—Circle, \$1; parquette, 75c.; balcony (first two rows, 75c), 50c

COMING ATTRACTIONS

Are always a source of interest,—theatrical or otherwise. Our attraction just now is the new coal we are receiving daily. It comes direct from the mines, in box cars; is clean, dry, and strictly first-class. All orders, large or small, will receive our prompt and careful attention. Offices, 421 Richmond St., and 316 Burwell St. A. D. Cameron & Son.

WE call the attention of our business men to the PROGRAM as an advertising medium. It reaches the class of people whose trade you want, and the way to get that trade is to make yourself known.

BELTON & ROOTE,
 BILL POSTING,
 DISTRIBUTING

GENERAL ADVERTISING AGENTS

Control all the Bill Boards and Dead Walls throughout the City. Population of City, 40,000

All orders for Bill Posting, Distributing Card Tacking, and General Advertising for Western Ontario will receive prompt attention.

OFFICE: BOX OFFICE, OPERA HOUSE.

Roses. Carnations.
Palms.

Ferns. Bulbs.

J. GAMMAGE & SONS,

218 Dundas Street.

INDIAN . . . TEA IMPORTING HOUSE.
 CEYLON

NEW BLENDS, DELICIOUS AND ECONOMICAL, AT MODERATE PRICES.

"English Breakfast," "Five o'clock Tea," & "Club House" Blends.
 60c. 50c. 45c.

These Blends are standard selections of choice Teas. Highly recommended to families for their fine quality and economical properties.

S. FUGE,

—IMPORTER OF—
 CHOICE TEAS
 TELEPHONE 858.

212 Dundas St.
 LONDON.

