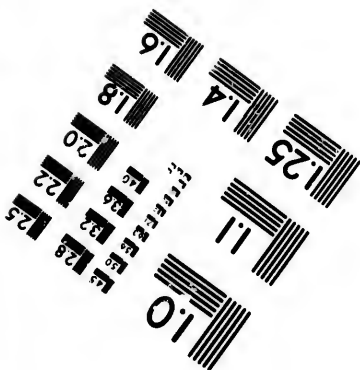
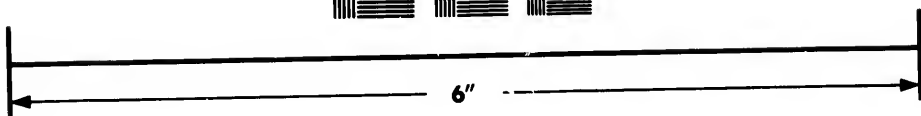
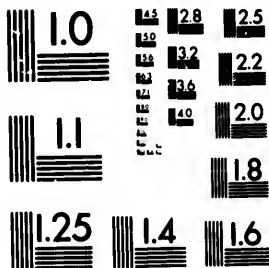


**IMAGE EVALUATION
TEST TARGET (MT-3)**



**Photographic
Sciences
Corporation**

23 WEST MAIN STREET
WEBSTER, N.Y. 14580
(716) 872-4503

E6 28
E6 32
E6 22
E6 20
E6 18

**CIHM/ICMH
Microfiche
Series.**

**CIHM/ICMH
Collection de
microfiches.**



Canadian Institute for Historical Microreproductions / Institut canadien de microreproductions historiques

11
10
E6 28
E6 32
E6 22
E6 20
E6 18

© 1981

Technical and Bibliographic Notes/Notes techniques et bibliographiques

The Institute has attempted to obtain the best original copy available for filming. Features of this copy which may be bibliographically unique, which may alter any of the images in the reproduction, or which may significantly change the usual method of filming, are checked below.

L'Institut a microfilmé le meilleur exemplaire qu'il lui a été possible de se procurer. Les détails de cet exemplaire qui sont peut-être uniques du point de vue bibliographique, qui peuvent modifier une image reproduite, ou qui peuvent exiger une modification dans la méthode normale de filmage sont indiqués ci-dessous.

- Coloured covers/
Couverture de couleur
- Covers damaged/
Couverture endommagée
- Covers restored and/or laminated/
Couverture restaurée et/ou pelliculée
- Cover title missing/
Le titre de couverture manque
- Coloured maps/
Cartes géographiques en couleur
- Coloured ink (i.e. other than blue or black)/
Encre de couleur (i.e. autre que bleue ou noire)
- Coloured plates and/or illustrations/
Planches et/ou illustrations en couleur
- Bound with other material/
Relié avec d'autres documents
- Tight binding may cause shadows or distortion
along interior margin/
La reliure serrée peut causer de l'ombre ou de la
distortion le long de la marge intérieure
- Blank leaves added during restoration may
appear within the text. Whenever possible, these
have been omitted from filming/
Il se peut que certaines pages blanches ajoutées
lors d'une restauration apparaissent dans le texte,
mais, lorsque cela était possible, ces pages n'ont
pas été filmées.
- Additional comments:/
Commentaires supplémentaires:

- Coloured pages/
Pages de couleur
- Pages damaged/
Pages endommagées
- Pages restored and/or laminated/
Pages restaurées et/ou pelliculées
- Pages discoloured, stained or foxed/
Pages décolorées, tachetées ou piquées
- Pages detached/
Pages détachées
- Showthrough/
Transparence
- Quality of print varies/
Qualité inégale de l'impression
- Includes supplementary material/
Comprend du matériel supplémentaire
- Only edition available/
Seule édition disponible
- Pages wholly or partially obscured by errata
slips, tissues, etc., have been refilmed to
ensure the best possible image/
Les pages totalement ou partiellement
obscurcies par un feuillet d'errata, une pelure,
etc., ont été filmées à nouveau de façon à
obtenir la meilleure image possible.

This item is filmed at the reduction ratio checked below/
Ce document est filmé au taux de réduction indiqué ci-dessous.

10X	12X	14X	16X	18X	20X	22X	24X	26X	28X	30X	32X
<input type="checkbox"/>	<input type="checkbox"/>	<input type="checkbox"/>	<input type="checkbox"/>	<input type="checkbox"/>	<input type="checkbox"/>	<input type="checkbox"/>	<input checked="" type="checkbox"/>	<input type="checkbox"/>	<input type="checkbox"/>	<input type="checkbox"/>	<input type="checkbox"/>

The copy filmed here has been reproduced thanks to the generosity of:

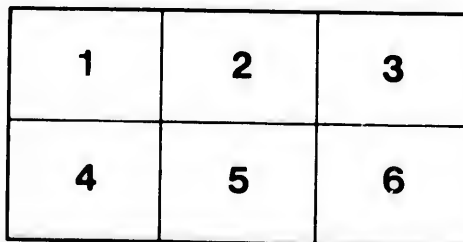
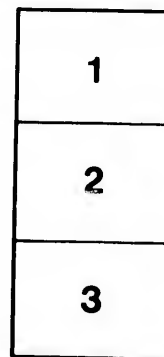
Library Division
Provincial Archives of British Columbia

The images appearing here are the best quality possible considering the condition and legibility of the original copy and in keeping with the filming contract specifications.

Original copies in printed paper covers are filmed beginning with the front cover and ending on the last page with a printed or illustrated impression, or the back cover when appropriate. All other original copies are filmed beginning on the first page with a printed or illustrated impression, and ending on the last page with a printed or illustrated impression.

The last recorded frame on each microfiche shall contain the symbol \rightarrow (meaning "CONTINUED"), or the symbol ∇ (meaning "END"), whichever applies.

Maps, plates, charts, etc., may be filmed at different reduction ratios. Those too large to be entirely included in one exposure are filmed beginning in the upper left hand corner, left to right and top to bottom, as many frames as required. The following diagrams illustrate the method:



L'exemplaire filmé fut reproduit grâce à la générosité de:

Library Division
Provincial Archives of British Columbia

Les images suivantes ont été reproduites avec le plus grand soin, compte tenu de la condition et de la netteté de l'exemplaire filmé, et en conformité avec les conditions du contrat de filmage.

Les exemplaires originaux dont la couverture en papier est imprimée sont filmés en commençant par le premier plat et en terminant soit par la dernière page qui comporte une empreinte d'impression ou d'illustration, soit par le second plat, selon le cas. Tous les autres exemplaires originaux sont filmés en commençant par la première page qui comporte une empreinte d'impression ou d'illustration et en terminant par la dernière page qui comporte une telle empreinte.

Un des symboles suivants apparaîtra sur la dernière image de chaque microfiche, selon le cas: le symbole \rightarrow signifie "A SUIVRE", le symbole ∇ signifie "FIN".

Les cartes, planches, tableaux, etc., peuvent être filmés à des taux de réduction différents. Lorsque le document est trop grand pour être reproduit en un seul cliché, il est filmé à partir de l'angle supérieur gauche, de gauche à droite, et de haut en bas, en prenant le nombre d'images nécessaire. Les diagrammes suivants illustrent la méthode.

rrata
to

pelure,
n à

REAT B

ONVENTI

(ALASKA)

Signed

[Ratification]

Presented to bo

PRINTED
BY E

And to be
EYRE and

JOHN
HODGKIN

1911

TREATY SERIES. No. 10.

1894.

CONVENTION

BETWEEN

**Great Britain and the United
States**

SUPPLEMENTARY TO THE

**CONVENTION RESPECTING BOUNDARIES
OF JULY 22, 1892
(ALASKA AND PASSAMAQUODDY BAY).**

Signed at Washington, February 3, 1894.

[Ratifications exchanged at Washington, March 28, 1894.]

*Presented to both Houses of Parliament by Command of Her Majesty.
April 1894.*

LONDON:

**PRINTED FOR HER MAJESTY'S STATIONERY OFFICE
BY HARRISON AND SONS, ST. MARTIN'S LANE,
PRINTERS IN ORDINARY TO HER MAJESTY.**

And to be purchased, either directly or through any Bookseller, from
Eyre and Spottiswoode, East Harding Street, Fleet Street, E.C., and
32, Abingdon Street, Westminster, S.W.; or
John Menzies & Co., 12, Hanover Street, Edinburgh, and
90, West Nile Street, Glasgow; or
Hodges, Figgis & Co., Limited, 104, Grafton Street, Dublin.

CON
A.
T.
18
P.

[4

THE
Kingdom
America
organiz
the Hi
viding
Majesty
respect
have b
conclud
from th
tion, h
Conven
purpose
Her
Britain
G.C.M.C
Britain
The
Secretar
Wh
Full Po
agreed u

The
1892, st
survey r
from th
[5

CONVENTION BETWEEN GREAT BRITAIN
AND THE UNITED STATES SUPPLEMEN-
TARY TO THE CONVENTION OF JULY 22,
1892, RESPECTING BOUNDARIES (ALASKA AND
PASSAMAQUODDY BAY).

Signed at Washington, February 3, 1894.

[Ratifications exchanged at Washington, March 28, 1894.]

THE Governments of Her Majesty the Queen of the United Kingdom of Great Britain and Ireland and of the United States of America, being credibly advised that the labours of the Commission organized pursuant to the Convention which was concluded between the High Contracting Parties at Washington July 22, 1892, providing for the delimitation of the existing boundary between Her Majesty's possessions in North America and the United States, in respect to such portions of said boundary-line as may not, in fact, have been permanently marked in virtue of Treaties heretofore concluded, cannot be accomplished within the period of two years from the first meeting of the Commission as fixed by that Convention, have deemed it expedient to conclude a supplementary Convention extending the term for a further period, and for this purpose have named as their respective Plenipotentiaries:—

Her Majesty the Queen of the United Kingdom of Great Britain and Ireland, his Excellency Sir Julian Pauncefote, G.C.B., G.C.M.G., Ambassador Extraordinary and Plenipotentiary of Great Britain; and

The President of the United States, Walter Q. Gresham, Secretary of State of the United States;

Who, after having communicated to each other their respective Full Powers, which were found to be in due and proper form, have agreed upon the following Articles:—

ARTICLE I.

The third paragraph of Article I of the Convention of July 22, 1892, states that the respective Commissions shall complete the survey and submit their final Reports thereof within two years from the date of their first meeting. The Joint Commissioners

held their first meeting November 28, 1892; hence the time allowed by that Convention expires November 28, 1894. Believing it impossible to complete the required work within the specified period, the two Governments hereby mutually agree to extend the time to December 31, 1895.

ARTICLE II.

The present Convention shall be duly ratified by Her Britannic Majesty and by the President of the United States of America, by and with the advice and consent of the Senate thereof; and the ratifications shall be exchanged at Washington at the earliest practicable date.

In faith whereof we, the respective Plenipotentiaries, have signed this Convention, and have hereunto affixed our seals.

Done in duplicate at Washington, the third day of February 1894.

(L.S.) JULIAN PAUNCEFOTE.
(L.S.) W. Q. GRESHAM.

he time
believing
specified
tend the

Britannic
America,
eof; and
e earliest

ies, have
ls.

February

EFOTE.

