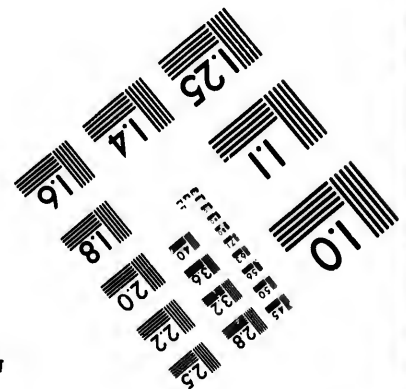
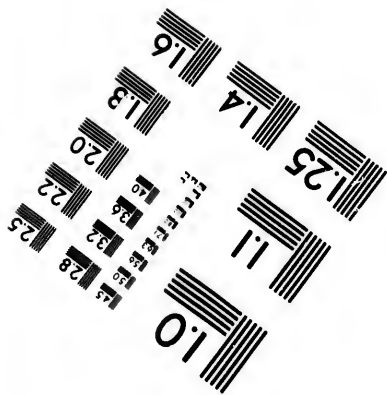
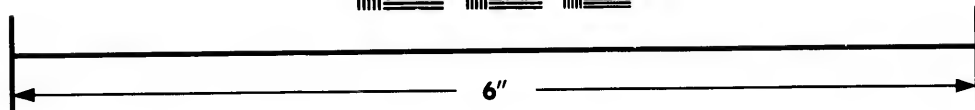
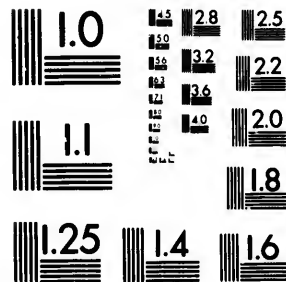


**IMAGE EVALUATION
TEST TARGET (MT-3)**



**Photographic
Sciences
Corporation**

23 WEST MAIN STREET
WEBSTER, N.Y. 14580
(716) 872-4503

28 25
32 22
20

**CIHM/ICMH
Microfiche
Series.**

**CIHM/ICMH
Collection de
microfiches.**



Canadian Institute for Historical Microreproductions / Institut canadien de microreproductions historiques

10

© 1983

Technical and Bibliographic Notes/Notes techniques et bibliographiques

The Institute has attempted to obtain the best original copy available for filming. Features of this copy which may be bibliographically unique, which may alter any of the images in the reproduction, or which may significantly change the usual method of filming, are checked below.

L'Institut a microfilmé le meilleur exemplaire qu'il lui a été possible de se procurer. Les détails de cet exemplaire qui sont peut-être uniques du point de vue bibliographique, qui peuvent modifier une image reproduite, ou qui peuvent exiger une modification dans la méthode normale de filmage sont indiqués ci-dessous.

- | | |
|--|--|
| <input checked="" type="checkbox"/> Coloured covers/
Couverture de couleur | <input type="checkbox"/> Coloured pages/
Pages de couleur |
| <input type="checkbox"/> Covers damaged/
Couverture endommagée | <input type="checkbox"/> Pages damaged/
Pages endommagées |
| <input type="checkbox"/> Covers restored and/or laminated/
Couverture restaurée et/ou pelliculée | <input type="checkbox"/> Pages restored and/or laminated/
Pages restaurées et/ou pelliculées |
| <input type="checkbox"/> Cover title missing/
Le titre de couverture manque | <input type="checkbox"/> Pages discoloured, stained or foxed/
Pages décolorées, tachetées ou piquées |
| <input type="checkbox"/> Coloured maps/
Cartes géographiques en couleur | <input type="checkbox"/> Pages detached/
Pages détachées |
| <input type="checkbox"/> Coloured ink (i.e. other than blue or black)/
Encre de couleur (i.e. autre que bleue ou noire) | <input type="checkbox"/> Showthrough/
Transparence |
| <input type="checkbox"/> Coloured plates and/or illustrations/
Planches et/ou illustrations en couleur | <input type="checkbox"/> Quality of print varies/
Qualité inégale de l'impression |
| <input type="checkbox"/> Bound with other material/
Relié avec d'autres documents | <input type="checkbox"/> Includes supplementary material/
Comprend du matériel supplémentaire |
| <input type="checkbox"/> Tight binding may cause shadows or distortion
along interior margin/
La reliure serrée peut causer de l'ombre ou de la
distortion le long de la marge intérieure | <input type="checkbox"/> Only edition available/
Seule édition disponible |
| <input type="checkbox"/> Blank leaves added during restoration may
appear within the text. Whenever possible, these
have been omitted from filming/
Il se peut que certaines pages blanches ajoutées
lors d'une restauration apparaissent dans le texte,
mais, lorsque cela était possible, ces pages n'ont
pas été filmées. | <input type="checkbox"/> Pages wholly or partially obscured by errata
slips, tissues, etc., have been refilmed to
ensure the best possible image/
Les pages totalement ou partiellement
obscurcies par un feuillet d'errata, une pelure,
etc., ont été filmées à nouveau de façon à
obtenir la meilleure image possible. |
| <input type="checkbox"/> Additional comments:/
Commentaires supplémentaires: | |

This item is filmed at the reduction ratio checked below/
Ce document est filmé au taux de réduction indiqué ci-dessous.

10X	14X	18X	22X	26X	30X
<input type="checkbox"/>	<input type="checkbox"/>	<input type="checkbox"/>	<input checked="" type="checkbox"/>	<input type="checkbox"/>	<input type="checkbox"/>
12X	16X	20X	24X	28X	32X

The copy filmed here has been reproduced thanks to the generosity of:

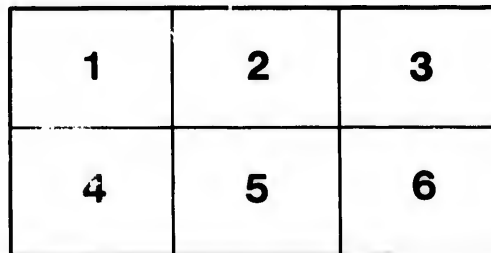
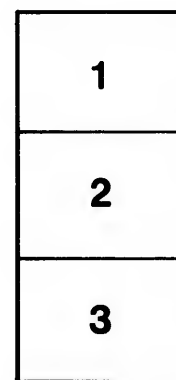
Library of Congress
Photoduplication Service

The images appearing here are the best quality possible considering the condition and legibility of the original copy and in keeping with the filming contract specifications.

Original copies in printed paper covers are filmed beginning with the front cover and ending on the last page with a printed or illustrated impression, or the back cover when appropriate. All other original copies are filmed beginning on the first page with a printed or illustrated impression, and ending on the last page with a printed or illustrated impression.

The last recorded frame on each microfiche shall contain the symbol \rightarrow (meaning "CONTINUED"), or the symbol ∇ (meaning "END"), whichever applies.

Maps, plates, charts, etc., may be filmed at different reduction ratios. Those too large to be entirely included in one exposure are filmed beginning in the upper left hand corner, left to right and top to bottom, as many frames as required. The following diagrams illustrate the method:



L'exemplaire filmé fut reproduit grâce à la générosité de:

Library of Congress
Photoduplication Service

Les images suivantes ont été reproduites avec le plus grand soin, compte tenu de la condition et de la netteté de l'exemplaire filmé, et en conformité avec les conditions du contrat de filmage.

Les exemplaires originaux dont la couverture en papier est imprimée sont filmés en commençant par le premier plat et en terminant soit par la dernière page qui comporte une empreinte d'impression ou d'illustration, soit par le second plat, selon le cas. Tous les autres exemplaires originaux sont filmés en commençant par la première page qui comporte une empreinte d'impression ou d'illustration et en terminant par la dernière page qui comporte une telle empreinte.

Un des symboles suivants apparaîtra sur la dernière image de chaque microfiche, selon le cas: le symbole \rightarrow signifie "A SUIVRE", le symbole ∇ signifie "FIN".

Les cartes, planches, tableaux, etc., peuvent être filmés à des taux de réduction différents. Lorsque le document est trop grand pour être reproduit en un seul cliché, il est filmé à partir de l'angle supérieur gauche, de gauche à droite, et de haut en bas, en prenant le nombre d'images nécessaire. Les diagrammes suivants illustrent la méthode.



QE

367

.W56

Det

THE
F

WEISB

6
4

AN ELEMENTARY GUIDE

TO

Determinative Mineralogy

FOR THE USE OF

THE PRACTICAL MINERALOGIST AND PROSPECTOR, AND
FOR INSTRUCTION IN SCHOOLS AND ACADEMIES,

BASED UPON THE METHOD OF

WEISBACH'S "TABELLEN ZUR BESTIMMUNG DER
MINERALIEN,"

APPLIED CHIEFLY TO AMERICAN SPECIES.

6 Charles
4493
GILBERT WHEELER,

Professor in the University of Chicago.

CHICAGO:

S. J. WHEELER, PUBLISHER.
1880.



π

QE367
-W56

H.E.P. Dec. 9, 1911.

al
bo
su
th
ho
in
tic
Ch
th
co

de
it
se
th
di
th
in
or

re
ei
er
m
a
fo

cl

H.E.P. Dec. 9, 21.

PREFACE.

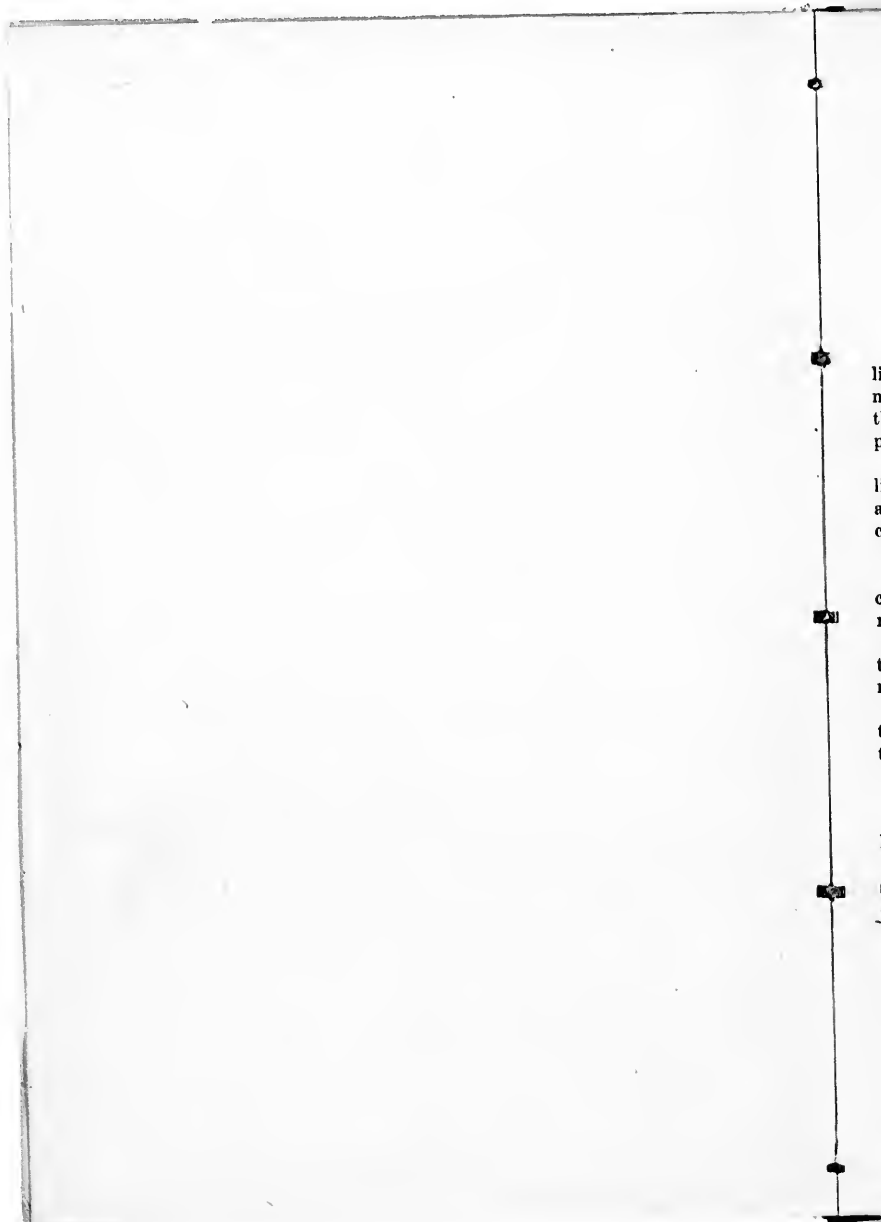
It is now usual in our leading academies, high schools and similar educational institutions to impart instruction in the natural sciences, not merely by text-book and class-room drill, but also by means of actual elementary practice in such experiments or observations as are carried on by those who devote themselves to the investigation of natural phenomena. Heretofore, these hours of practice have been mainly devoted to Botany and Zoology, as material in these departments is everywhere at hand and inexpensive. Some institutions have also added somewhat of laboratory practice in the department of Chemistry. Most teachers recognize that by these methods the sciences themselves are studied, and not merely what compilers of text-books have collated concerning them.

In view of the very general interest at present taken in the mineral development of our country, especially in our Western States and Territories, it is now eminently fit that the students at our better institutions should secure some slight training in practical mineralogy, at least sufficient to enable them to recognize the more important minerals and ores. It is no longer difficult to obtain specimens. Few schools even now are entirely without them, and either by donation or exchange the collections can readily be increased. Many dealers supply sets of minerals, complete enough for the ordinary requirements of a practical course, at a cost of but a few dollars.

In this work minerals not found in the United States, or the mining regions of Mexico, are for the most part omitted. The exceptions are such foreign species, only, as are found in most collections. By thus eliminating minerals rarely encountered it is claimed that this little manual is thereby rendered much more useful, as it often occurs, in the use of larger works, that more time and labor are required to ascertain that a given mineral is not some rare, foreign one, than it would to determine half a dozen ordinary specimens.

Throughout the work the names of species and the physical and chemical characteristics are those given in Dana's Mineralogy.

C. GILBERT WHEELER.



lin
ne
the
pr

liz
ac
ce

oc
n
th
m
to
th

le
s
e

INTRODUCTION.

In the use of these tables where the lustre, hardness, streak, color, crystalline form and cleavage can be determined, there can scarcely be any difficulty or need of explanation as to the method of procedure. A simple inspection of the tables themselves, or of the synopsis of their arrangement, on the page preceding the index, will make a detailed explanation quite unnecessary.

Where, as in the case of some silicates, etc., on account of imperfect crystallization, special difficulties present themselves, the supplementary tables are added where, with an acid, a blow-pipe and a couple of fluxes, a still greater certainty may be obtained and additional species recognized.

In general it may be remarked:

I. The indicated nature and degree of lustre, as well as the variety of color, are invariably those of fresh fractures, a fact which the beginner should not overlook, especially if the mineral have a metallic lustre.

II. Friable, slightly coherent minerals are to be found in the second table, their streak being identical with their color; in rare cases some of them, as magnetic iron ore and argentite, are in the first series.

III. The indicated degree of hardness are average amounts with reference to crystalline faces, or, in non-crystallized minerals, to fresh fracture surfaces; this is to be considered particularly with fibrous or scaly minerals.

IV. The scale of hardness is the one of Mohs.

V. The crystallographic terms are those of Dana.

It has been deemed expedient to distinguish the common minerals by larger, the more rarely occurring by smaller type.

The numbering of the species it was believed would be a convenience for such as might desire to apply the classification in the arranging of their collections.

I. MINERALS HAVING

I.

No.	NAME.	HARDNESS.	COLOR.	STREAK.
1	COPPER	2.75	copper-red	copper-red
2	Breithauptite	5	copper-red	reddish brown
3	NICCOLITE	5.25	light copper-red	black

II.

No.	NAME.	HARDNESS.	COLOR.	STREAK.
4	GOLD	2.5	gold-yellow	gold-yellow
5	Electrum	2.5	pale yellow	pale yellow
6	BORNITE	3	copper-red to brown	gray black
7	Millerite	3-3.6	brass-yellow to bronze-yellow	bright black
8	PYRRHOTITE	3.5-4.5	bronze-yellow	gray black
9	CHALCOPYRITE	3.5-4	brass-yellow	green black
10	Homichlin	4	bronze-yellow	black
11	PYRITE	6	brass-yellow	brown black

AVING

A METALLIC LUSTRE.

I.

Red.

STREAK.	TENACITY.	CRYSTALLINE SYSTEM.	FRACTURE AND CLEAVAGE.	REMARKS.
upper-red	malleable	isom.		G. 8-8.
reddish brown	brittle	hex.		G. 7-5.
black	brittle	hex.		G. 7-3-7-7.

II.

Yellow.

STREAK.	TENACITY.	CRYSTALLINE SYSTEM.	FRACTURE AND CLEAVAGE.	REMARKS.
old-yellow	malleable	isom.		G. 15 to 19-5.
pale yellow	malleable			G. 15-5.
gray black	brittle	isom.	small conchoidal and uneven	G. 4-4-5-5.
black	brittle	hex.	rhombohedral and perfect	G. 4-5-5-7.
gray black	brittle	hex.	granular	G. 4-4. Is usually attracted by magnet.
green black	brittle	tetr.	uneven	G. 4-1-4-3.
black	brittle	tetr. (?)	uneven	G. 4-4-4-5.
brown black	brittle	isometric.	uneven	G. 5. Strikes fire with steel.

III.

No.	NAME.	HARDNESS.	COLOR.	STREAK.
12	Mercury	fluid	tin-white	
13	BISMUTH	2.25	reddish white	gray
14	Tellurium	2.5	tin-white	tin-white
15	SILVER	2.5	silver-white	silver-white
16	Hessite	2.5	gray zinc-white	gray
17	ANTIMONY	3	tin-white	tin-white
18	Altaite	3.25	tin-white	tin-white
19	Domeykite	3.5	tin-white	gray white
20	ARSENIC	3.5	tin-white	dark white
21	Whitneyite	3.5	grayish to reddish white	reddish white

III.

White.

STREAK.	TENACITY.	CRYSTALLINE SYSTEM.	FRACTURE AND CLEAVAGE.	REMARKS.
				G. 13.5.
ay	brittle when cold	hex.		G. 9.7.
n-white	brittle	hex.	lateral perfect, basal imperfect	
ver-white	ductile	isometric		G. 9.4.
ay	sectile	orthorhombic	indistinct	G. 8.3.
n-white	very brittle	hex.	basal perfect	G. 6.6.
n-white	sectile	isometric	cubic	G. 8.1.
ray white		reniform	uneven	G. 7.
ark white	brittle	rh.	uneven and fine granular	G. 6.
reddish white	malleable	not distinct	fresh fracture dull	G. 7.6. Rubbed surfaces strongly metallic

No.	NAME.	HARDNESS.	COLOR.	STREAK.
22	Gersdorffite	5	silver-white	gray black
23	Leucopyrite	5.25	silver-white	gray black
24	SMALTITE	5.5	tin-white to steel-gray	gray black
25	Arsenopyrite	5.5	silver-white	dark gray black
26	Iridosmine	6	tin-white	black

IV.

No.	NAME.	HARDNESS.	COLOR.	STREAK.
27	MOLYBDENITE	1.25	pure lead-gray	lead-gray
28	LEAD	1.5	lead-gray	gray
29	Sylvanite	1.5	steel-gray	steel-gray
30	Tetradymite	1.75	pale steel-gray	pale steel-gray
31	PYROLUSITE	2	iron-black to dark steel-gray	black or blue-black

GRAY.

11

STREAK.	TENACITY.	CRYSTALLINE SYSTEM.	FRACTURE AND CLEAVAGE.	REMARKS.
black	brittle	iso.	uneven	G. 76.
black	brittle	hex.	uneven	G. 76.
black	brittle	iso.	octahedral and distinct	G. 76.
gray-black	brittle	orthr.	uneven	G. 6.
	malleable with difficulty	hex.		commonly in irregular, flattened grains.

IV.

Gray.

STREAK.	TENACITY.	CRYSTALLINE SYSTEM.	FRACTURE AND CLEAVAGE.	REMARKS.
gray	sectile and almost malleable	hex.	in laminae	G. 74.
	ductile and malleable	iso.		G. 76.
gray		mkl.	uneven	G. 76.
steel-gray	not very sectile.	hex.	laminae flexible.	G. 76. Soils paper.
black or blue-black	brittle	ortho.		G. 74.

No.	NAME.	HARDNESS.	COLOR.	STREAK.
32	STIBNITE	2	lead-gray	lead-gray
33	BISMUTHINITE	2	lead-gray	lead-gray
34	ARGENTITE	2-25	black lead-gray	black lead-gray
35	STEPHANITE	2-25	black gray to iron-black	iron-black
36	GALENITE	2-5	lead-gray	lead-gray
37	CHALCOCITE	2-5	lead-gray	lead-gray
38	Berthierite	2-3	dark steel-gray to pinchbeck-brown	iron-black
39	Dyscrasite	3-5	gray to white	silver white
40	TETRAHEDRITE	3-4-5	light flint-gray to iron-black	same or brown red
41	Platinum	4-5	whitish steel-gray	whitish steel-gray

GRAY.

13

E.

STREAK.

d-gray

d-gray

black lead-gray

n-black

d-gray

d-gray

n-black

ver white

me or brown red

bitish steel-gray

TENACITY.	CRYSTALLINE SYSTEM.	FRACTURE AND CLEAVAGE.	REMARKS.
sectile	orthorh.	laminated	G. 74.
slightly brittle	orthorh.		G. 76.
sectile	iso.	uneven	G. 76.
slightly	orthorh.	uneven	G. 76.
frangible	iso.	flat or even	G. 77.
"	orthorh.	conchoidal	G. 75.
"	prism. or massive	granular	G. 74.
sectile	orthorh.	uneven	sometimes tarnishes, yellow and blackish.
slightly brittle	isometric tetrahedral	uneven	G. 75.
ductile	iso.	hackly	G. 76. Occasionally magnetic-polar.

No.	NAME.	HARDNESS.	COLOR.	STREAK.
42	Iron	4.5	iron-gray	shining
43	SMALTITE	5.5	tin-white to steel-gray	gray black
44	Hematite	5.5	dark steel-gray iron-black; where earthy, is red	cherry-red or reddish brown

V.

No.	NAME.	HARDNESS.	COLOR.	STREAK.
45	GRAPHITE	1	iron-black dark steel-gray	black, shining, soils paper
46	Polybasite	2-3	iron-black in thin crystals, cherry red	iron-black
47	Stephanite	2.25	black gray to iron-black	iron-black
48	Stromeyerite	2.5	black to steel-gray	shining
49	Miargyrite	2.5	iron-black	cherry-red
50	Enargite	3	iron-black to grayish	grayish black
51	Coloradoite	3	iron-black	

BLACK.

15

TENACITY.	CRYSTALLINE SYSTEM.	FRACTURE AND CLEAVAGE.	REMARKS.
ductile	iso.	hackly	magnetic
brittle	iso.	uneven	G. 7-6.
brittle	rhomb.	uneven	sometimes attracted by magnet.

Black.

TENACITY.	CRYSTALLINE SYSTEM.	FRACTURE AND CLEAVAGE.	REMARKS.
thin laminae flexible	hex.	sectile	G. 7-2. Feels greasy.
	ortho.	uneven	G. 7-6.
	massive	none	G. 7-7.
	ortho.	sub-conch.	G. 7-6.
	mk1.	sub-conch.	G. 7-5.
brittle	ortho.	uneven	G. 7-4.
	amorph.	sub-conchoidal	G. 8-6. Decepritates.

No.	NAME.	HARDNESS.	COLOR.	STREAK.
52	Tenorite	3	gray black	gray black soils fingers
53	Melacconite	3	iron-gray to gray black	gray black soils fingers
54	Manganite	4	iron-black to dark steel-gray	reddish brown to black
55	Hausmannite	5	brown black	chestnut-brown
56	MAGNETITE	5	iron-black	black
57	Menaccanite	5	iron-black	black to red brown
58	Chromite	5.5	iron-black to brown black	brown
59	Franklinite	5.5	iron-black	dark red-brown
60	Hematite	5.5	dark steel-gray iron-black; where earthy, is red	cherry-red and reddish brown
61	Tantalite	6-6.5	black	brown black

STREAK.	TENACITY.	CRYSTALLINE SYSTEM.	FRACTURE AND CLEAVAGE.	REMARKS.
black in fingers	slightly brittle	hex.		G. 6.
black in fingers	slightly brittle	iso.		G. 7.6.
reddish brown to black	slightly brittle	ortho.	uneven	G. 7.4.
chestnut-brown	brittle	tetra.	uneven	G. 7.4.
black	brittle	iso.	sub-conch.	G. 7.4. Strongly magnetic.
black to red brown	brittle	rhom.	conch.	G. 7.4. Slightly magnetic.
brown	brittle	iso.	uneven	G. 7.4. Slightly magnetic.
dark red-brown	brittle	iso.	conch.	G. 7.5. Slightly magnetic.
cherry-red and reddish brown	brittle, scaly and fibrous	rhom.	uneven	Sometimes att'd by magnet.
coron black	brittle	orthorh.	conch.	7-8. No change before belowpipe.

II. SUB-METALLIC
WITH BLACK, BROWN, RED, YELLOW,

I. Black

No.	NAME.	HARDNESS.	LUSTRE.	COLOR.	STRENGTH.
62	Asphaltum	1.25	like black pitch	black, brownish black	brown-
63	MINERAL COAL	2.5	dull to brilliant earthy, resinous or sub-metallic	black to dark brown	black
64	Anthracite	2.5	lustre bright, sub-metallic.	black	black
65	Petzite	2.5	iron-black	black	grayish
66	Sphalerite or Blende	3.5	resinous to adamantine	brown, yellow, black, red, green, white.	grayish to red brown
67	Ilvaite	5.5	sub-metallic	iron-black, dark grayblack	black to brown or bro
68	Psilomelane	5.5	sub-metallic	iron-black to dark steel-gray	brown shining
69	Braunite	6.25	sub-metallic	dark brownish black	dark brownish black

METALLIC

MINERALS,

RED, YELLOW,

GREEN OR BLUE STREAK.

I. Black

Streak. (All are opaque.)

COLOR.	STREAK.	TENACITY.	CRYSTALLINE SYSTEM.	FRACTURE AND CLEAVAGE.	REMARKS.
black, brownish black	brown-black		amorph.		Mineral pitch. Melts at 90° and burns with bright flame.
black to dark brown	black	brittle	amorph.	rarely somewhat sectile	G. 1. Infusible to sub-fusible. Often soft or pasty when heated.
black	black	very brittle	amorph.	conchoi.	Burns with feeble flame of a pale color.
black	grayish black		orthorh.	prismatic	Soluble in aqua regia with separation of silver chloride.
brown, yellow, black, red, green, white.	grayish black to reddish-brown	brittle	iso.	conch.	G. 7-4. Sub-fusible.
iron-black, dark grayblack	black to green or brown	brittle	ortho.	uneven	G. 7-3.
iron-black to dark steel-gray	brown black, shining	brittle	amorph.		G. 7-4.
dark brownish black	dark brownish black	brittle	tetra.	uneven	G. 7-4.

II. Brownish

No.	NAME.	HARDNESS.	LUSTRE.	COLOR.	STRENGTH.
70	Ozocerite	1	waxy	yellowish green, brown and black	yellow to black
71	Hepatic Cinnabar	2.25	greasy, inclined to metallic	liver-brown	brown
72	Brown Coal (Lignite)	2.5	greasy	brown to black.	brown
73	Chrysocolla	3	greasy to vitreous	green, blue green, blue.	impure to black, white
74	SPHALERITE (Blende)	3.75	resinous to adamantine	brown, yellow, black, red, green	reddish
75	GOETHITE	5.25	imperfect adamantine	yellow, reddish and blackish brown	brown, low, yellow
76	LIMONITE	5.25	greasy to glassy	dark brown to brownish yellow	yellow
77	Wolframite	5.25		grayish or brownish black	dark brown
78	Siphylite	5.75	resinous, pseudo-metallic	dark brown to red	cinnabar brown, gray
79	Psilomelane	5.75		steel-gray to iron-black	brown
80	Rutile	6.25	metallic adamantine	reddish brown to red, yellow, blue, violet, black, rarely grass green.	pale
81	Cassiterite	6.5	adamantine	brown or black, red gray, white or yellow	whitish,

II. Brownish Streak.

COLOR.	STREAK.	TENACITY.	CRYSTALLINE SYSTEM.	FRACTURE AND CLEAVAGE.	REMARKS.
yellowish green, brown and black	yellow brown to black		amorph.		Sometimes greenish by transmitted light.
liver-brown	brownish	slightly brittle	amorph.		Combustible.
brown to black.	brownish bl'k	slightly brittle	amorph.	uneven	G. 7.1. Combustible.
green, blue green, blue.	impure brown to black, pure white	brittle	amorph.	conch., sectile	G. 2.
brown, yellow, black, red, green	reddish br'wn	brittle	iso.	conch.	G. 39.
yellow, reddish and blackish brown	brownish yellow, ochre yellow	brittle	ortho.		
dark brown to brownish yellow	yellowish br'n	brittle	amorph.		G. 3.6.
grayish or brownish black	dark red brown to bl'ck	brittle	ortho.		G. 7.1-7.35. Sometimes weak magnetic.
dark brown to red	cinnamon-brown to pale gray	very brittle	ortho.	uneven conch.	4.89. Heated, glows brilliantly and becomes yellow.
steel-gray to iron-black	brownish bl'k	brittle	amorph.		G. 3.7-4.7.
reddish brown to red, yellow, blue, violet, black, rare grass green.	pale brown	brittle	tetr.	sub-conch., uneven	G. 4.18-4.20.
brown or black, red gray, white or yellow	white, grayish, brownish	brittle	tetr.	sub-conch., uneven.	G. 6.7-7.1.

No.	NAME.	HARDNESS.	LUSTRE.	COLOR.
82	Erythrite	1.75	pearly adamantine	crimson, peach- red, pearl, green gray
83	CINNABAR	2.25	adamantine	cochineal-red
84	Froustite	2.25	adamantine	cochineal-red
85	Pyrrargyrite	2.25	metallic adamantine	black to cochineal- red
86	Chrysocolla	3	greasy to vitreous	green, blue green, blue
87	CUPRITE	3.5	adamantine	various shades of red
88	Zincite	4.25	sub-adamantine	deep red
89	HEMATITE	5.5	metallic to earthy	dark steel-gray to iron-black.

III.

Reddish Streak.

COLOR.	STREAK.	TENACITY.	CRYSTALLINE FRACTURE AND CLEAVAGE.		REMARKS.
crimson, peach-red, pearl, green gray	(paler than color)	laminae flexible	mono.	sectile	G. 29.
cochineal-red	scarlet		rhomb.	sectile	G. 89.
cochineal-red	cochineal-red		rhomb.	uneven	G. 54.
black to cochineal-red	cochineal-red		rhomb.	conch.	G. 57.
green, blue green, blue	impure brownish to black, pure white	brittle	amorph.	conch., sectile	G. 2.
various shades of red	several shades of brownish red shining	brittle	iso.	sub-conch. uneven	G. 59.
deep red	orange-yellow to yellow red	brittle	hex.	sub-conch.	G. 5.
dark steel-gray to iron-black.	cherry red, reddish brown	brittle	rhomb.	sub-conch. uneven	G. 45-53. Sometimes magnetic.

IV. Yellowish

No.	NAME.	HARDNESS.	LUSTRE.	COLOR.
90	Orpiment	1.5	pearly, resinous	lemon-yellow
91	NATIVE SULPHUR	1.75	resinous	sulphur-yellow
92	Autunite	2.25	sub-adamantine	citron to sulphur-yellow
93	SPHALERITE (Blende)	3.75	resinous to adamantine	brown, yellow, black, red, green
94	Palagonite	4.5	vitreous or greasy	amber-yellow, brown yellow, garnet-red, black
95	Limonite	5.25	silky to dull earthy	various browns to yellow
96	Göthite	5.25	imperfect adamantine	yellowish, reddish, blackish brown
97	Cassiterite	6.5	adamantine when in crystals.	brown, black, red, gray, whitish yellow

YELLOWISH STREAK.

25

Yellowish

Streak.

COLOR.	STREAK.	TENACITY.	CRYSTALLINE SYSTEM.	FRACTURE AND CLEAVAGE.	REMARKS.
mon-yellow	(paler than color)	laminae flexible	ortho.	sub-sectile	G. 3-4. Electric.
sulphur-yellow	yellow, reddish, greenish		ortho.	sectile	G. 2.
iron to sulphur-yellow	yellowish		ortho.		G. 3.
brown, yellow, black, red, green	reddish br'wn	brittle	iso.	conch.	G. 3-9 to 4-2. Electric.
umber-yellow, brown yellow, garnet-red, black	yellow, brown yellow	brittle	amorph.		opaque.
various browns to yellow	yellow brown	brittle	compact fibrous and amorph.		G. 3-6. Often stalactitic.
yellowish, reddish, blackish brown	brownish yellow, ochre-yellow	brittle	ortho.		G. 4.
brown, black, red, gray, whitish yellow	white, grayish brown, yellowish	brittle	tetr.	sub-conch., uneven	G. 6-4 to 7-8. Botryoidal and reniform.

V. Green

No.	NAME	HARDNESS.	LUSTRE.	COLOR.
98	Glauconite	2	dull to glistening	blackish green, olive green, yellow green, gray green
99	Johannite	2.25	vitreous	emerald-green, apple-green
100	ANNABERGITE	2.25		apple-green
101	Muscovite	2.25	more or less pearly	white, gray brown, pale green, violet, yellow, green, rose-red.
102	Thuringite	2.5	of scales, pearly; of mass, dull, greasy	olive-green, pistachio-green
103	Stilpnomelane	3.4	vitreous	black, green black, yellow bronze, green bronze
104	Genthite	3.5		pale apple-green, yellowish
105	Malachite	3.75	adamantine, vitreous	bright green
106	Pseudo-Malachite	4.75	adamantine to vitreous	dark emerald, blackish green
107	Uraninite	5.5	greasy, pitch-like	greenish, velvet-bl'k

V. Green

Streak.

COLOR.	STREAK.	TENACITY.	CRYSTALLINE SYSTEM.	FRACTURE AND CLEAVAGE.	REMARKS.
blackish green, olive green, yellow green, gray green	(same)		amorph.		G. 2 to 2'4. Granular.
emerald-green, apple-green	(paler than color)		mono.		G. 3. Bitter taste.
apple-green	gr'nish white	soft	monocl.	uneven	
white, gray brown, pale green, violet, yellow, green, rosead.	colorless and light green		mono.		G. 2'7. Usually in scales.
live-green, pistachio-green	(paler than color)	very tough	amorph.		G. 3'15.
black, green black, yellow bronze, green bronze	(same)		hex.		G. 3. Foliated or fibrous.
pale apple-green, yellowish	gr'nish white	fragile	amorph.	falls to pieces in water	G. 2'7.
bright green	paler green		monocl.	uneven	G. 3'5. Colors flame green.
dark emerald, blackish green	green (paler than color)	brittle	ortho.	uneven	G. 4'3.
greenish, velvet-bl'k	olive-green, black, grayish		iso.	uneven	G. 6'4. Infusible.

6. Blue

No.	NAME.	HARDNESS.	LUSTRE.	COLOR.
108	Vivianite	1.5	pearly to vitreous	white, dirty blue
109	Chrysocolla	3	vitreous, earthy	mountain-green to sky-blue
110	AZURITE	3.5	vitreous adamantine	azure-blue, Berlin-blue
111	LAPIS LAZULI	5	vitreous	Berlin/razure-blue, violet-blue, red, green

BLUE STREAK.

29

Streak.

STREAK.	TENACITY.	CRYSTALLINE SYSTEM.	FRACTURE AND CLEAVAGE.	REMARKS.
blue white, indigo-blue	laminae flexible	mono.	sectile dichroic	G. 27.
blue, pure white	sometimes brittle	(amorp.)	sectile, conch.	G. 2. Never fibrous.
(lighter than color)	brittle	mono.	conch.	G. 3-5. Often earthy.
		iso.	uneven	G. 23.

6. Blue

COLOR.

dirty blue

rain-green to
blue

blue,
blue

orange-blue,
blue, red,

III. MINERALS OF WHITE

I. Very

No.	NAME.	HARDNESS.	LUSTRE.	COLOR.
112	Leidyite	?	waxy, silky	green, bluish green
113	Smectite	very soft.	dull, streak shining	white, gray, green, brownish
114	Talc	1	pearly	apple-green to white, silver-white
115	Tschermigite (Ammonia Alum)	1	vitreous	white
116	CERARGYRITE	1·2	resinous to adamantine	pearl-gray, gray, green, whitish
117	Pyrophyllite	1·5	pearly	white, green, gray, yellowish
118	JEFFERISITE	1·5	pearly	brown, yellow
119	ALUNOGEN	1·5	vitreous, silky	white tinged with red or yellow

WHITE

I. Very

COLOR.

bluish green

gray, green,
whitish

green to
silver-white

gray, gray,
whitish

green, gray,
whitish

yellow

tinged with
yellow

OR GRAY STREAK.

Soft.

TENACITY.	CRYSTALLINE SYSTEM.	FRACTURE AND CLEAVAGE.	REMARKS.
	(amorp.) clay-like		greasy feel.
laminae, flexible, not elastic	ortho.	very sectile	G. 2-5. Sub-transparent.
	iso.		soluble.
	iso.	sectile	G. 5-5. Streak silvery shining.
laminae, flexible, not elastic	ortho.		G. 2-7. Greasy feel.
micaceous	ortho. (?)		G. 2-3. Exfoliates prodigiously.
(sub-transparent)	monocl.		G. 1-6. Tastes like common alum.

No.	NAME.	HARDNESS.	LUSTRE.	COLOR.
120	Arsenolite	1.5	vitreous, silky	white, pale yellow
121	Kaolinite	1.75	pearly	white, gray-white, yellowish
122	Sal Ammoniac	1.75	vitreous	white, yellowish, grayish
123	Mirabilite	1.75	vitreous	white
124	GYPSUM	1.75	pearly, shining, sub-vitreous	white, gray, flesh- red, honey-yellow, ochre-yellow, blue black, brown, red
125	Muscovite	2	pearly	white, gray, brown, pale green, violet, yellow, (rose red)
126	NITRE	2	vitreous	white
127	Halotrichite	2	silky	yellow white
128	Goslarite	2	vitreous	white, bluish reddish
129	EPSOMITE (Epsom salt)	2	vitreous	white

COLOR.	TENACITY.	CRYSTALLINE SYSTEM.	FRACTURE AND CLEAVAGE.	REMARKS.
white, pale yellow		iso.		G. 3-6. Botryoidal or stalactitic.
white, gray-white, yellowish	scales are flexible, inelastic	ortho.		G. 2-4 to 2-6. Transparent to translucent.
white, yellowish, grayish	soluble	iso.	fibrous, tough	G. 1-5. Taste saline, pungent.
white		monocl.	(transparent) (opaque)	G. 1-4. Taste cool, then feebly saline and bitter
white, gray, fleshed, honey-yellow, ochre-yellow, blue black, brown, red		monocl.	very distinct	G. 2-3. Transparent to opaque.
white, gray, brown, pale green, violet, yellow, (rose red)	(laminae, flexible, very tough)	ortho.	(easily split into laminae)	G. 2-7. Transparent to translucent.
white	brittle	ortho.	(sub-transparent)	G. 1-9. Taste saline and cooling.
yellow white	pulverulent on exposure		fibrous	Taste inky, astringent.
white, bluish reddish	brittle	ortho.		G. 2. Taste metallic, astringent, nauseous.
white				G. 1-7. Bitter saline.

MINERALS OF WHITE OR GRAY STREAK.

No.	NAME.	HARDNESS.	LUSTRE.	COLOR.
130	Kalinite (Potash alum)	2·2	vitreous	white
131	Sepiolite (Meerschaum)	2·25	(smooth feel or clay-like)	gray, white, yellow or red tinge
132	Borax	2·25	vitreous, resinous	white, grayish, bluish
133	Cerolite	2·25	resinous	greenish, yellowish, reddish, white
134	Penninite	2·25	pearly, vitreous	green less common, red, yellow and white
135	Succinite (Amber)	2·25	vitreous, resinous	yellow, red, brown, whitish
136	Hydrozincite	2·25	dull	white, gray, yellow
137	Bruceite	2·5	pearly, waxy and vitreous	white, gray, blue, green
138	BIOTITE	2·5	splendent, pearly	green to black, rarely white
139	Halite (Common salt)	2·5	vitreous	white, yellowish, reddish, bluish

COLOR.	TENACITY.	CRYSTALLINE SYSTEM.	FRACTURE AND CLEAVAGE.	REMARKS.
white		iso.		G. 17. Infusible, decrepitates.
gray, white, yellow or red tinge	(opaque)	(compact)		in dry masses, floats on water.
white, grayish, bluish	brittle	monocl.	conch.	G. 17. Taste sweet alkaline.
greenish, yellowish, reddish, white	(feels greasy)	(amorph.)	conch.	G. 23. Does not adhere to tongue.
green less common, red, yellow and white	laminæ flexible, not elastic	rhomb.	perfect basal	G. 26 to 285. Pseudomorphs after hornblende occur.
yellow, red, brown, whitish	(transparent)	(amorph.)	sub-ch.	G. 1. Electric on friction.
white, gray, yellow	(earthy, chalk-like)	(amorph.)		G. 35 to 38.
white, gray, blue, green	laminæ flexible	rhomb.	(sectile)	G. 23.
green to black, rarely white	elastic	hex.	perfect	G. 27 to 31.
white, yellowish, reddish, bluish	brittle	iso.		G. 21. Decrepitates.

MINERALS OF WHITE OR GRAY STREAK.

No.	NAME.	HARDNESS.	LUSTRE.	COLOR.
140	PHLOGOPITE	2.5	pearly, sub-metallic	yellow, brown, br'n red, green, white
141	Glauberite	2.5	vitreous	yellow, gray
142	Caledonite	2.5	resinous	green, blue green
143	Deweylite	3	resinous	white, yellow, greenish, reddish
144	Lepidolite	3	pearly	rose-red, yellow, violet-gray, white
145	Chrysocolla	3	vitreous, also earthy	green to blue

II.

No.	NAME.	HARDNESS.	LUSTRE.	COLOR.
146	Serpentine	2.5 to 4	greasy	green, red, yellow
147	WULFENITE	2.75	resinous, adaman- tine	yellow, green, brown, red
148	Anglesite	2.75	adamantine, resin- ous, vitreous	
149	CALCITE	3	vitreous to earthy	white, gray, red, green, blue, violet, yellow

COLOR.
yellow, brown, br'n red, green, white
yellow, gray
green, blue green
white, yellow, greenish, reddish
rose-red, yellow, violet-gray, white
green to blue

TENACITY.	CRYSTALLINE SYSTEM.	FRACTURE AND CLEAVAGE.	REMARKS.
laminae tough, elastic	ortho.		G. 28. Sometimes reflects light, copper- like.
brittle	monocl.	conch.	G. 26. Saline taste.
rather brittle	ortho.	uneven	G. 64. Translucent.
very brittle	amorp.		G. 1-9 to 22. Looks like gum arabic or resin.
	ortho.		G. 28. Colors flame crim- son.
brittle	cryptocrs.	sectile	G. 2. Botryoidal and massive.

II.

Soft.

COLOR.
green, red, yellow
yellow, green, brown, red
white, gray, red, green, blue, violet, yellow

TENACITY.	CRYSTALLINE SYSTEM.	FRACTURE AND CLEAVAGE.	REMARKS.
	ortho.	splintery conch.	G. 25. Often unctuous.
brittle	tetr.	sub-conch.	G. 6. Translucent.
very brittle	ortho.	conch.	G. 61. B. B. yields lead.
brittle	rhomb.	conch.	G. 25. Effervesces with acids.

No.	NAME.	HARDNESS.	LUSTRE.	COLOR.
150	ANHYDRITE	3	vitreous to pearly	white to brick-red
151	CELESTITE	3	vitreous	white, faint blue, reddish
152	BARITE	3	vitreous	white, tinted often
153	Allophane	3	vitreous to sub-resinous	blue, green, yellow, brown
154	Stilpnomelane	3	pearly or vitreous	black, yellow, green
155	CERUSSITE	3-25	adamantine, vitreous, resinous	white, gray, gray black
156	PYROMORPHITE	3-5	resinous	green, yellow, br'wn
157	Laumontite	3-5	vitreous	white to yellow, gray
158	Stilbite	3-5	vitreous	white, yellow, brown, red

COLOR.	TENACITY.	CRYSTALLINE SYSTEM.	FRACTURE AND CLEAVAGE.	REMARKS.
white to brick-red		ortho.	uneven	G. 28. Heated, gives no water.
white, faint blue, reddish	very brittle	ortho.	conch., uneven	G. 39. B. B. crimson color.
white, tinted often		ortho.		G. 43. Sometimes fetid when rubbed.
blue, green, yellow, brown	very brittle	amorp.	conch., shining	G. 18. Translucent.
black, yellow, green		cryst.		G. 3. Foliated or velvety.
white, gray, gray black	very brittle	ortho.	conch.	G. 64 Translucent.
green, yellow, br'wn	brittle	hex.	uneven	G. 65. Decrepitates sometimes.
white to yellow, gray	not very brittle	mono.	uneven	G. 22 to 24. Readily crumbles.
white, yellow, brown, red	brittle	ortho.	uneven	G. 2. Translucent.

No.	NAME.	HARDNESS.	LUSTRE.	COLOR.
159	Scorodite	3.5	vitreous, sub-adamantine, sub-resinous	pale leek-green, liver-brown
160	Strontianite	3.5	vitreous	green, white, gray, yellow
161	Witherite	3.5	vitreous	white, yellow, gray
162	ARAGONITE	3.5	vitreous	white, gray, yellow, green, violet
163	SPHALERITE (Elende)	3.5	resinous, adamantine	brown, yellow, bl'k, red, green, white
164	DOLOMITE	3.5 to 4	vitreous	white, red, green, brown, gray, black
165	FLUORITE	4	vitreous; sometimes splendent	white, yellow, gre'n, rose, blue, brown
166	Siderite	4	vitreous	ash-gray, yellow gray, brown, green, white
167	Triphylite	5	sub-resinous	green, gray, bluish

COLOR.	TENACITY.	CRYSTALLINE SYSTEM.	FRACTURE AND CLEAVAGE.	REMARKS.
pale leek-green, liver-brown		ortho.	uneven	G. 3. Sub-transparent.
green, white, gray, yellow	brittle	ortho.	uneven	G. 3·6. Colors flame crimson.
white, yellow, gray	brittle	ortho.	uneven	G. 4·2. Sub-transparent.
white, gray, yellow, green, violet	brittle	ortho.	sub-conch.	G. 2·9. Often in com- pound crystals.
brown, yellow, bl'k, red, green, white	brittle	iso.	conch.	G. 3·9 to 4·2. Trans- parent to sub-trans- lucent.
white, red, green, brown, gray, black	brittle	rhomb.		G. 2·8. Translucent, rarely transparent.
white, yellow, gre'n, rose, blue, brown	brittle	iso.	conch. and splin- tery	G. 3 to 3·25. Phosphor- escens when heated.
ash-gray, yellow gray, brown, green, white	brittle	rhomb.	uneven	G. 3·7. Heated, becomes magnet.
green, gray, bluish	brittle	ortho		G. 3·5. Colors flame red.

III. Medium Hardness,

No.	NAME.	HARDNESS.	LUSTRE.	COLOR.
168	Margarite	4	pearly, vitreous	gray, yellowish, reddish white
169	Magnesite	4	vitreous	white, yellowish, gray white, brown
170	Chabazite	4.5	vitreous	white, flesh red
171	Apophyllite	4.5	vitreous	white, grayish
172	Wollastonite	4.75	vitreous	white to gray, yellow, red, brown
173	CALAMINE	4.75	vitreous, adamantine	white, yellow to brown
174	Mordenite	5	highly silky	white, yellowish
175	APATITE	5	vitreous to sub-resinous	green, blue, white, yellow
176	Ceruleolactite	5	vitreous	blue, greenish blue
177	SMITHSONITE	5	vitreous	white, gray, green, brown
178	Datolite	5.25	vitreous	gray, green, yellow, red.
179	Enstatite	5.5	pearly to vitreous	gray white, green white
180	Pyroxene	5.5	vitreous	green to white, green to black

m Hardness,

White Streak.

COLOR.	CRYSTALLINE SYSTEM.	FRACTURE AND CLEAVAGE.	REMARKS.
gray, yellowish, reddish white	ortho.		G. 29. Laminae brittle.
white, yellowish, gray white, brown	rhomb.	conch.	G. 3. Opaque, transparent.
white, flesh red	rhomb.	uneven	G. 2. Brittle.
white, grayish	tetr.		G. 23. Brittle, transparent.
white to gray, yellow, red, brown	mono.	uneven; sometimes very tough	G. 27. Fibrous structure.
white, yellow to brown	ortho.	uneven	G. 31. Brittle.
white, yellowish		brittle	G. 2. Concretionary.
green, blue, white, yellow	hex.	uneven	G. 29. Transparent, brittle.
blue, greenish blue	crypto-crystalline.	uneven to conchoidal	G. 255 to 26.
white, gray, green, brown	rhomb.	uneven.	G. 4. Brittle.
gray, green, yellow, red.	mono.	uneven	G. 28. Brittle.
gray white, green white	ortho.		G. 31.
green to white, green to black	mono.	uneven	G. 32. Brittle.

IV. Hard.

No.	NAME.	HARDNESS.	LUSTRE.	COLOR.
181	ANDALUSITE	3-7	vitreous	whitish, red, gray, green
182	Natrolite	5.5	vitreous	white, grayish, yellow, red
183	Ekebergite	5.5	vitreous, pearly, greasy	white, gray, bluish, reddish
184	LAZULITE	5.5	vitreous	azure-blue, greenish blue
185	WILLEMITE	5.5	vitreous to resinous	white, yellow, green, brown
186	Thomsonite	5.5	vitreous	snow-white, brown
187	Analcite	5.5	vitreous	white, gray, green, yellow
188	Brookite	5.5	metallic, adamantine	hair-brown, yellowish
189	Enstatite	5.5	pearly, vitreous, metalloidal	gray yellow, green white
190	TITANITE	5.5	adamantine, resinous	brown, gray, black, yellow, green
191	PYROXENE	5.5	vitreous, resinous	green to white, green to black

IV. Hard.

White Streak.

COLOR.	CRYSTALLINE FRACTURE AND CLEAVAGE.		REMARKS.
	SYSTEM.	CLEAVAGE.	
whitish, red, gray, green	ortho.	uneven	G. 3. Having cross in transverse section.
white, grayish, yellow, red	ortho.		G. 2:1. Transparent.
white, gray, bluish, reddish	tetr.		G. 2:7. Resembles Wernerite.
azure-blue, greenish blue	mono.	uneven	G. 3. Sub-transparent, brittle.
white, yellow, green, brown	rhomb.	conch.	G. 3:8. Transparent, brittle.
snow-white, brown	ortho.	uneven	G. 2:3. Pyro-electric, brittle.
white, gray, green, yellow	iso.	sub-conch.	G. 2:2. Brittle.
hair-brown, yellowish	ortho.		G. 4:1. Brittle.
gray yellow, green white	ortho	prismatic, fibrous	G. 3:1. Resembles amphibole and pyroxene.
brown, gray, black, yellow, green	mono.	brittle	G. 3:4. Transparent, opaque.
green to white, green to black	mono.	conch., uneven	G. 3:2. Brittle.

MINERALS OF WHITE OR GRAY STREAK.

No.	NAME.	HARDNESS.	LUSTRE.	COLOR.
102	AMPHIBOLE	5.5	vitreous; often silky	white to black, through green
103	Hypersthene	5.5	pearly; sometimes metalloidal	brown, green, gray black, pinchbeck brown
194	Octahedrite	5.5	metallic, adamantine	brown to blue, black
195	Cyanite	5-7	vitreous	blue, white, gray, green, black
196	OPAL	6	vitreous, pearly	white, yellow, red, brown, green
197	Amblygonite	6	vitreous to greasy	sea-green, white, brownish
198	Sodalite	6	vitreous, greasy	gray, blue, brown
199	Rhodonite	6	vitreous	brownish red greenish, yellowish
200	Chloritoid	6	pearly	gray, green gray, green black
201	Turquoise	6	waxy, feeble	sky-blue, blue green, apple-green
202	ZOISITE	6	pearly	white, gray, yellow, brown

BREAK.

HARD.

47

COLOR.	CRYSTALLINE SYSTEM.	FRACTURE AND CLEAVAGE.	REMARKS.
white to black, through green	mono.	sub-conch., uneven	G. 29. Frequently columnar, also fibrous.
brown, green, gray black, pinchbeck brown	ortho.		G. 33. Resembles enstatite.
brown to blue, black	tetr.	sub-conch.	G. 38. Brittle.
blue, white, gray, green, black	tricl.		G. 34. Crystals, blue centers white margins.
white, yellow, red, brown, green	amorp.		G. 19. Sometimes rich play of colors by reflected light.
sea-green, white, brownish	tricl.	uneven	G. 3. Translucent.
gray, blue, brown	iso.	uneven	G. 23. Decomposed by HCl.
brownish red greenish, yellowish	tric.	conch., uneven	G. 34. Tough.
gray, green gray, green black	mono., tri.	brittle	G. 35. Strongly dichroic.
sky-blue, blue green, apple-green	reniform, massive	conch.	G. 26. False turquoise is softer.
white, gray, yellow, brown	ortho.		G. 31. Transparent, translucent.

No.	NAME.	HARDNESS.	LUSTRE.	COLOR.
203	LABRADORITE	6	vitreous, sub-resinous	gray, brown, green
204	ORTHOCLASE	6	vitreous	white, gray, green
205	ALBITE	6	vitreous	white; sometimes blue, gray, green
206	OLIGOCLASE	6	waxy to vitreous	white to grayish, reddish
207	DIASPORE	6.5	vitreous	white, brown, yellow
208	SPODUMENE	6.5	pearly	gray green

V. Very Hard.

No.	NAME.	HARDNESS.	LUSTRE.	COLOR.
209	Allanite	6	sub-metallic, pitchy	brown to black
210	PREHNITE	6.5	vitreous	light green to gray
211	EPIDOTE	6.5	vitreous, resinous	green to black

Y STREAK.

VERY HARD.

49

	COLOR.	CRYSTALLINE SYSTEM.	FRACTURE AND CLEAVAGE.	REMARKS.
	gray, brown, green	tric.		G. 26. Translucent.
	white, gray, green	mono.	right angled and conch. to uneven	G. 24. Transparent to translucent.
	white; sometimes blue, gray, green	tric.	uneven	G. 25. } Both have striated surfaces.
ous	white to grayish, reddish	tric.	conch. to uneven	G. 25. }
	white, brown, yellow	ortho.	very brittle	G. 33. When thin, translucent.
	gray green	mono.	uneven	G. 31. Translucent.

V. Very Hard.

White Streak.

	COLOR.	CRYSTALLINE SYSTEM.	FRACTURE AND CLEAVAGE.	REMARKS.
	brown to black	mono.	uneven	G. 3. Opaque, brittle.
	light green to gray	ortho.	uneven	G. 28. Pyro-electric.
ous	green to black	mono.	uneven	G. 32. Brittle.

MINERALS OF WHITE OR GRAY STREAK.

No.	NAME.	HARDNESS.	+ LUSTRE.	COLOR.
212	CHALCEDONY	6.5	waxy	white, gray, brown, blue
213	CHRONDRODITE	6.5	vitreous, resinous	white, yellow, brown,
214	RUTILE	6.5	metallic, adamantine	red, brown
215	CASSITERITE	6.5	adamantine	brown, black
216	Fibrolite	6.5	vitreous to sub-adamantine	brown, white, green
217	CHRYSOLITE	6.5	vitreous	green
218	Vesuvianite	6.5	vitreous	brown, green, yellow, blue
219	QUARTZ	7	vitreous	colorless, many shades
220	GARNET	7	vitreous, resinous	red, brown, yellow, green, black
221	Axinite	7	highly glassy	brown, blue, gray
222	TOURMALINE	7	vitreous	black, (blue, red, green)

COLOR.	CRYSTALLINE SYSTEM.	FRACTURE AND CLEAVAGE.	REMARKS.
white, gray, brown, blue	crypto-cryst.		Transparent, translucent.
white, yellow, brown,	ortho.	sub-conch. uneven	G. 3'1. Transparent, sub-transparent.
red, brown	tetr.	uneven	G. 4'1. Brittle
brown, black	tetr.	sub-conch. uneven	G. 6'4. Brittle.
brown, white, green	mono.		G. 3'2. Transparent to translucent.
green	ortho.	conch.	G. 3'3. Transparent, translucent.
brown, green, yellow, blue	tetr.	sub-conch. uneven	G. 3'3. Streak uncolored, sometimes dichroic.
colorless, many shades	hex.	conch.	G. 2'5. Transparent, opaque, brittle.
red, brown, yellow, green, black	iso.	sub-conch. uneven	G. 3'1. Transparent, brittle.
brown, blue, gray	tric.	conch.	G. 3'2. Trichroic, brittle.
black, (blue, red, green)	hex.	uneven	G. 2'9. Pyroelectric, dichroic.

No.	NAME.	HARDNESS.	LUSTRE.	COLOR.
223	Iolite	7-25	vitreous	blue
224	Schorlomite	7-25	vitreous	black
225	ANDALUSITE	7-5	vitreous	whitish, red, violet, green
226	Staurolite	7-5	sub-vitreous to resinous	reddish-brown, brown, black, yellow-brown
227	Zircon	7-5	adamantine	colorless, brown, yellow, gray
228	BERYL	7-75	vitreous, resinous	emerald-green, blue, yellow
229	SPINEL	8	vitreous	red, blue, green, yellow
230	TOPAZ	8	vitreous	yellow, white, green, blue
231	CHRYSOBERYL	8-5	vitreous	green
232	CORUNDUM	9	vitreous	blue, red, yellow, brown, gray
233	DIAMOND	10	brilliant, adaman- tine	white, colorless, tinged sometimes

COLOR.	CRYSTALLINE SYSTEM.	FRACTURE AND CLEAVAGE.	REMARKS.
blue	ortho.	sub-conch.	G. 25. Pleochroic.
black	amorph.	conch.	G. 3-8. Often irised, tarnished.
whitish, red, violet, green	ortho.	sub-conch., uneven	G. 3. Sub-translucent.
reddish-brown, brown, black, yellow-brown	ortho.	conch.	G. 3-4. Translucent.
colorless, brown, yellow, gray	tetr.	conch.	G. 4. Transparent, opaque.
emerald-green, blue, yellow	hex.	conch., uneven	G. 2-6. Transparent, brittle.
red, blue, green, yellow	iso.	conch.	G. 3-5. Transparent.
yellow, white, green, blue	ortho.	conch., uneven	G. 2-4. Pyroelectric.
green	ortho.	conch., uneven	G. 3-6. Transparent.
blue, red, yellow, brown, gray	rhomb.	conch., uneven	G. 3-9. Very tough.
white, colorless, tinged sometimes	iso.	conch.	G. 3-52. Electric when rubbed.

**SUPPLEMENTARY
MINERALS OF LOW LUSTRE**

I. EASILY DISSOLVED IN

NAME.	HARDNESS.	TASTE.
Mirbalite (Glauber salt)	1.5	cool, then feebly saline and bitter.
Sal Ammoniac	1.5	saline, pungent (not deliquescent).
Nitre	2	saline, cooling.
Alunogen	2	like common alum.
Halotrichite	2	inky-astringent.
Borax	2.25	sweet-alkaline, feeble.

MENTARY
LUSTRE
DISSOLVED IN

TABLES.
AND COLORLESS STREAK.
WATER OR VINEGAR.

TASTE.

ly saline and bitter.

t (not deliquescent).

alum.

at.

, feeble.

NAME.	HARDNESS.	TASTE.
Morenosite	2.5	metallic-astringent.
Goslarite	2.5	metallic-astringent, nauseous.
Epsomite (Epsom salt)	2.5	bitter, saline.
Kalinite	2.5	like common alum.
Halite (Salt)	2.5	purely saline.
Glauberite	2.75	slightly saline.

II. Not Soluble.

NAME.	HARDNESS.	FUSIBILITY.
Hydrozincite	2.5	infusible.
Caledonite	2.75	easily fusible.
Calcite	3	infusible.
Cerussite	3	on charcoal easily reduces to lead.
Witherite	3.75	easily fusible.
Strontianite	3.75	fusible with difficulty.

Not Soluble.

Effervescing with Acid.

SOLUBILITY.

NAME.	HARDNESS.	FUSIBILITY.
Aragonite	4	infusible.
Dolomite	4	infusible (effervesces sparingly).
Siderite	4	fusible with difficulty, dissolves in hot acid.
Magnesite	4.5	infusible.
Smithsonite	5	infusible.

y reduces to lead.

culty.

III. Insoluble. Not

A. YIELDING WATER WHEN

PULVERIZED. IN HOT OR COLD, DILUTE OR CONCENTRATED ACID.	IN THE FLAME.	
	VOLATILE OR FUSIBLE.	
	NAME.	HARD- NESS.
Completely and promptly dissolved		
Completely, not easily dissolved		
Completely and readily dissolved with separation of gelatinous silica	Apophyllite Natrolite	4.75 5.25
Completely and readily dissolved with separation of pulverulent or semi-gelatinous silica		
Dissolved with difficulty, silica separating out		
Only partially decomposed or dissolved		
Insoluble or but very slightly acted upon	Succinite	2.5

NOTE.—Minerals indicated by (A)

B. YIELDING LITTLE OR NO WATER

PULVERIZED. IN HOT OR COLD, DILUTE OR CONCENTRATED ACID.	IN THE FLAME.	
	VOLATILE OR FUSIBLE.	
	NAME.	HARD- NESS.
Completely and easily soluble	Arsenolite	1.5
Completely but with difficulty soluble	Amblygonite	6
Readily dissolved with separation of gelatinous silica		
Readily dissolved with separation of pulverulent silica, lead chloride or tungstic acid		
Insoluble or but slightly acted upon	Cerargyrite Lepidolite	1 2.5

WHEN HEATED IN CLOSED TUBE.

OR NO WATER

IN THE FLAME.

FUSIBLE OR FUSIBLE.

NAME. HARD-
NESS.

elite 1.5

pygonite 6

pyrite 1
folite 2.5

BEFORE THE BLOWPIPE.

EASILY FUSIBLE.		FUSIBLE WITH DIFFICULTY.		INFUSIBLE.	
NAME.	HARD- NESS.	NAME.	HARD- NESS.	NAME.	HARD- NESS.
Tryphylite	5	Apatite	5		
Fluorite	4				
Sodalite (A)	5.5	Wallastonite	4.5	Willemite	5.5
Allanite	6.5	Allanite	6.5	Chondrodite	6.5
		Chrysolite	6.5	Chrysolite	6.5
Wulfenite	3				
Stolzite	3	Scheelite	4.5		
Ekebergite	6				
Muscovite	2.5			Brookite	5.5
Anhydrite	3			Chiastolite	5.5
Anglesite	3			Cyanite	5-6
Celestite	3	Talc	1	Opal	5-25
Pyromorphite	3.5	Barite	3	Octahedrite	5.5
Mimetite	3.5	Sphalerite	4	Enstatite	5.5
Rhodonite	5.5	Margarite	4	Rutile	6
Pyroxene (A)	5.5	Titanite		Cassiterite	6.5
Tremolite	5.5	Zoisite	6	Fibrolite	6.5
Fassaite	6	Orthoclase	6	Quartz	7
Oligoclase	6.5	Albite (A)	6.5	Chalcedony	7
Labradorite	6	Epidote (A)	6.5	Andalusite	7
Omphacite	6	Tourmaline	7	Staurolite	7.5
Spodumene (A)	6.5	Garnet	7	Zircon	7.5
Epidote (A)	6.5	Iolite	7	Chrysoberyl	8.5
Zoisite	6	Beryl	7.5	Spinel	8
Garnet	7			Topaz	8
Vesuvianite	7			Corundum	9
Axinite (A)	7			Diamond	10
Tourmaline	7				
Schorlomite	7.5				

BLOW PIPE TESTS.

ORES OF GOLD.

Native Gold.—Combination of Au. and Ag. in variable proportions, sometimes with traces of Fe. and Cu. It usually occurs in variously contorted and branched filaments, in scales, in plates, or in small, irregular masses.

On Ch., fuses to a globule which after cooling has a bright metallic surface. With S. Ph. in O. Fl. a bead is formed which opalizes on cooling, or becomes opaque and yellow, according to the amount of silver which it contains.

Resists the action of heated concentrated nitric acid; soluble only in aqua regia.

Sylvanite [Graphic Tellurium].— AgAuTe_2 .

In an open glass tube, yields a white sublimate which, when played upon with the flame, fuses to transparent drops. On Ch. fuses to a dark-gray globule, depositing at the same time a white Ct. which, when touched with the R. Fl., disappears, tinging the flame bluish-green. It finally affords a light-yellow malleable globule of metallic lustre.

Soluble in aqua regia, leaving a residue of chloride of silver. The solution gives a white precipitate with water.

ORES OF SILVER.

Native Silver.—Pure silver, associated with gold, copper, arsenic, iron, and other metals. Occurs usually in twisted filaments, or arborescent; sometimes in plates or massive.

On Ch., fuses easily to a globule, which assumes a bright surface, and shows after cooling a silver-white color. Foreign metals are detected by assaying in a cupel.

It dissolves in nitric acid.

Dyscrasite [Antimonial Silver].— Ag_3Sb and Ag_2Sb . $\text{H} = 3.5-4$. $\text{G} = 9.4-9.8$.

On Ch., fuses readily to a gray non-ductile globule and coats the Ch. with oxide of antimony; with continued heat the globule assumes the appearance of pure silver, and the Ct. becomes reddish.

Dissolves in nitric acid, leaving a residue of oxide of antimony.

Cerargyrite [Horn Silver].— AgCl . 75.2 per cent. Ag. It turns brown on exposure to air. When rubbed with a moistened plate of zinc or iron the latter becomes covered with a coating of silver. The streak is shining.

It fuses in a candle-flame. On Ch., is easily reduced, especially when mixed with Sd. Mixed with oxide of copper and heated on Ch. in R. Fl., chloride of copper is formed, which colors the flame azure-blue.

Insoluble in water and nitric acid. Slowly soluble in caustic ammonia. Partially decomposed by a boiling solution of caustic potassa.

Argentite [Silver Glance].— Ag_2S . 87.1 per cent. Ag. It is easily distinguished from other minerals of the same color by being cut by a knife like lead.

On Ch. in O. Fl., intumescs, gives out sulphurous acid, and finally yields a globule of metallic silver.

Soluble in dilute nitric acid, leaving a residue of sulphur.

Pyrrargyrite [Dark-red Silver Ore].— $3\text{Ag}_2\text{S}, \text{Sb}_2\text{S}_3$. 59.9 per cent. Ag.

In a matrass, fuses very readily and yields with continued heat a sublimate of tersulphide of antimony. In an open glass tube, gives antimonial fumes and sulphurous acid. On Ch., fuses readily and deposits a Ct. of antimonous oxide, being converted into sulphide of silver; if for a long time exposed to the O. Fl., or, when mixed with Sd., in the R. Fl., affords a globule of metallic silver.

Part of the SbS_3 is sometimes substituted by AsS_3 ; it then gives out arsenical fumes when mixed with Sd. and heated in the R. Fl. on Ch.

The pulverized mineral, when heated with nitric acid, turns black, and is ultimately dissolved, leaving a residue of sulphur and antimonous acid. Caustic potassa also blackens it and effects partial solution, from which acids precipitate tersulphide of antimony.

Proustite [Light-red Silver Ore].— $3AgS, As_2S_3$. 65.4 per cent. Ag.

Before the Bp. and to solvents, behaves like the preceding, excepting it gives off arsenical fumes instead of antimonous oxide. The solution in caustic potassa deposits a yellow precipitate when neutralized with acids.

Stephanite [Brittle Silver Ore].— $5AgS, Sb_2S_3$. 68.5 per cent. Ag.

In a matrass, decrepitates, then fuses and ultimately yields a faint sublimate of tersulphide of antimony. On Ch., fuses very readily and coats the Ch. with antimonous acid. If the blast with the O. Fl. is kept up for a sufficient time, the Ct. assumes a red color and a globule of metallic silver is obtained. Contains frequently copper and iron, which may be detected by appropriate tests. If arsenic is present it gives in the open tube a crystalline sublimate of arsenious acid

In dilute heated nitric acid it dissolves, excepting the sulphur and antimonous oxide; the solution becomes milky on addition of water. Partially dissolved by a boiling solution of caustic potassa.

Polybasite.— $9(Ag, Cu)_2S + (Sb, As)_2S_3$.

In a matrass, fuses very readily, but gives nothing volatile. In an open tube, gives sulphurous acid and antimonial fumes; the sublimate contains sometimes crystals of arsenous acid. On Ch., gives a Ct. of oxide of antimony; with continued heat, gives a bright metallic globule, which, on cooling, becomes black on its surface; sometimes a faint Ct. of oxide of zinc is deposited; the metallic globule affords with fluxes the reaction of silver and copper.

Stromeyerite [Argentiferous Sulphide of Copper].— $Cu_2S + Ag_2S$. 53 per cent. Ag, 31.2 per cent. Cu.

In a matrass, fuses easily and gives sometimes a little sulphur. In an open tube, fuses to a globule and gives sulphurous acid. On Ch., fuses to a gray metallic globule which is a little malleable; with fluxes the globule gives the reactions of copper, sometimes also those of iron; on a cupel with lead affords a globule of silver.

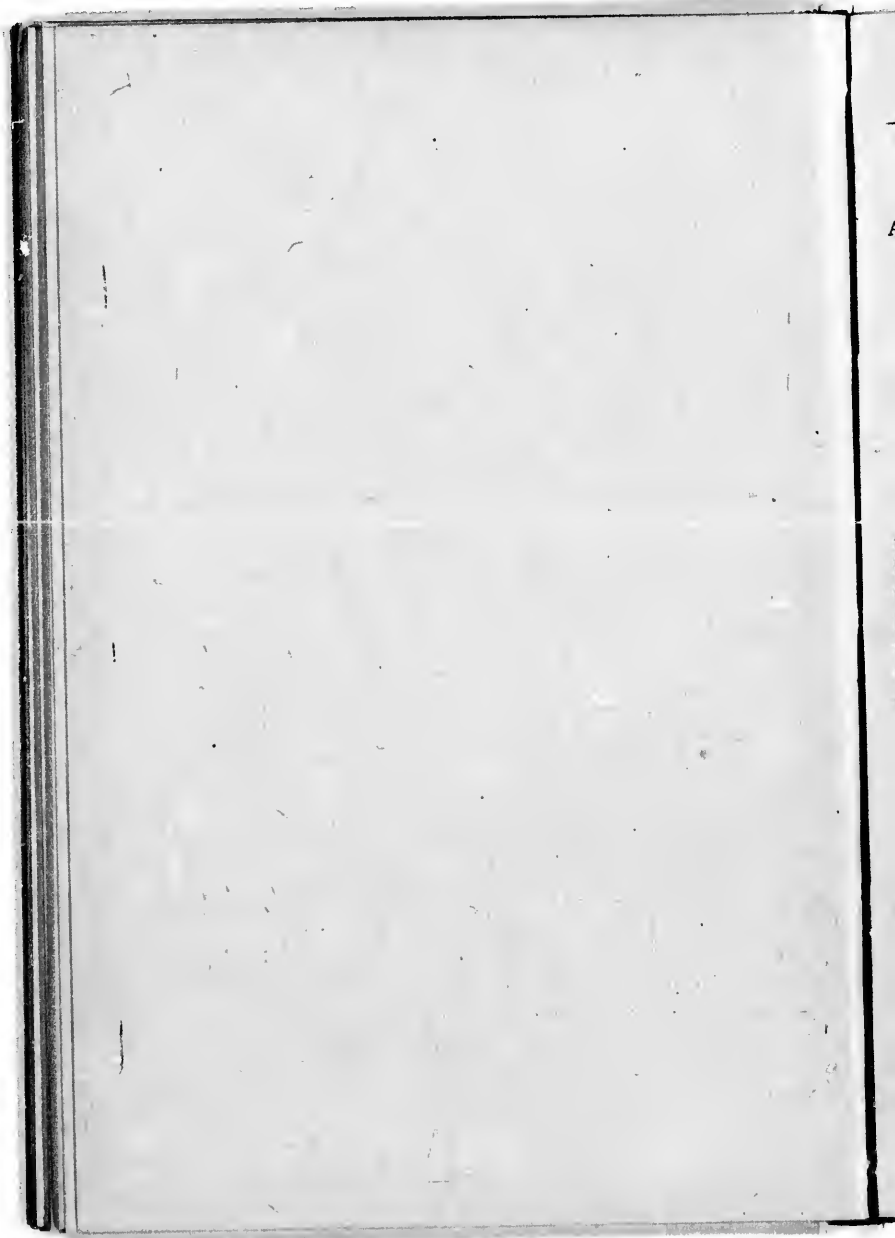
Dissolves in nitric acid, leaving a residue of sulphur.

BLOW PIPE ASSAY.

SILVER AND GOLD ORES.

The ore is reduced to a fine powder, mixed with vitrified borax and metallic lead (the quantities of which altogether depend upon the nature of the substance, and for which, therefore, no general rule can be given), and the mass placed in a cylindrical hole of the Ch. A powerful R. Fl. is given until the metals have united to a button, and the slag appears free from metallic globules. The flame is now converted into an O. Fl. and directed principally upon the button. Sulphur, arsenic, antimony, and other very volatile substances, are volatilized; iron, tin, cobalt, and a little copper and nickel become oxidized and are absorbed by the flux; silver and gold and the greater part of the copper and nickel remain with the lead (and bismuth, if present). When all volatile substances are driven off, the lead begins to become oxidized and the button assumes a rotary motion; at this period the blast is discontinued, the assay is allowed to cool, and when perfectly cold the lead button is separated from the glass by some slight strokes with a hammer. It is now placed on a cupel of bone-ash and treated with the O. Fl. until it again assumes a rotary motion. If much copper or nickel is present, the globule becomes covered with a thick infusible crust, which prevents the aimed-at oxidation; in this case another small piece of pure lead has to be added. The blast is kept up until the whole of the lead and other foreign metals, viz., copper and nickel, are oxidized; this is indicated by the cessation of the rotary movement, if only little silver is present, or by the appearance of all the tints of the rainbow over the whole surface of the button, if the ore was very rich in silver; after a few moments it takes the look of pure silver. The oxides of lead, copper, etc., are absorbed by the bone-ash, and pure silver, or an alloy of silver, with other noble metals, remains behind; the button may be tested for gold by dissolving in nitric acid.

The chloride of silver can be reduced on coal with soda to metallic silver.



THE SCALE OF HARDNESS,

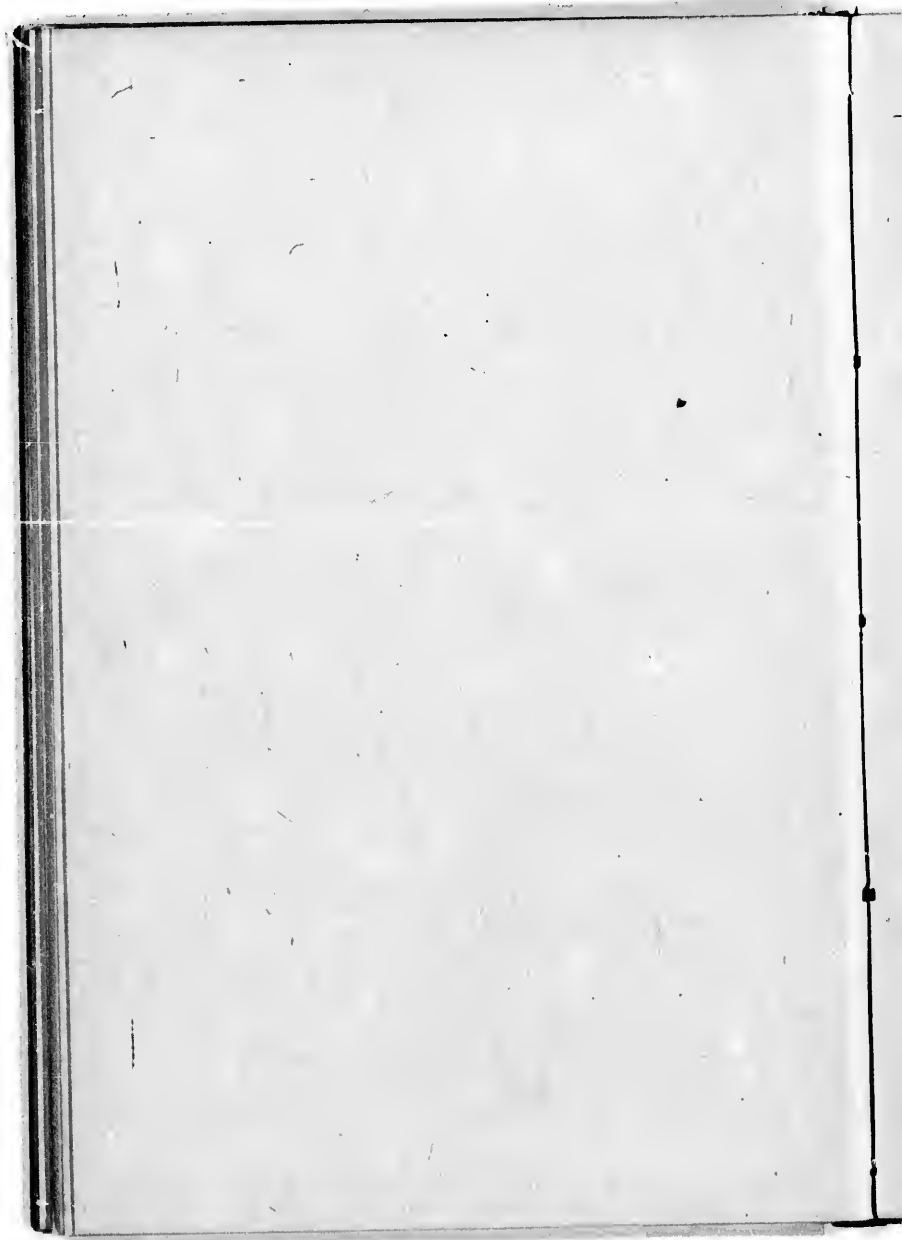
As introduced by Mohs, and enlarged by Breithaupt, is as follows:

1. Talc; common laminated light-green variety.
2. Gypsum; crystalline variety.
3. Calcite; transparent variety.
4. Fluorite; crystalline variety.
5. Apatite; transparent variety.
6. Orthoclase; white cleavable variety.
7. Quartz; transparent.
8. Topaz; transparent.
9. Corundum; cleavable varieties.
10. Diamond.

To test the hardness of a mineral we may proceed in two different manners; firstly, by attempting to scratch it with the minerals enumerated in the scale, successively; or, secondly, by abrasion with a file. If the file abrades the mineral under trial with the same ease as No. 4, and produces an equal depth of abrasion with the same force, its hardness is said to be 4. If with more facility than 4, but less than 5, the hardness may be 4.2 or 4.5. Several successive trials should be made to obtain certain results; and, when practicable, both methods should be employed.

A set of minerals, representing the scale of hardness, being not always at hand, it will be useful to give a series of substitutes for them, as arranged by Mr. Chapman:

1. Yields easily to the nail.
2. Yields with difficulty to the nail, or merely receives an impression from it. Does not scratch a copper coin.
3. Scratches a copper coin; but is also scratched by it, being of about the same degree of hardness.
4. Not scratched by a copper coin; does not scratch glass.
5. Scratches glass, though with difficulty, leaving its powder upon it. Yields readily to the knife.
6. Scratches glass easily. Yields with difficulty to the knife.
7. Does not yield to the knife. Yields to the edge of a file, though with difficulty.
- 8, 9, 10. Harder than flint.



ABBREVIATIONS.

iso.—isometric.
tetr.—tetragonal.
mono.—monoclinic.
ortho.—orthorhombic.
rh.—rhomboidal.
hex.—hexagonal.
cryst.—crystalline.
amorph.—amorphous.
G.—Specific Gravity.
prism.—prismatic.
conch.—conchoidal.
tricl.—triclinic.
Ch.—Charcoal.
O. Fl.—Oxidizing Flame.
R. Fl.—Reducing Flame.
Ct.—Coating.
Sd.—Carbonate of Soda.
S. Ph.—Salt of Phosphorus.
Blp.—Blow Pipe.



SYNOPSIS OF ARRANGEMENT.

Minerals of Metallic Lustre.....	7
Red.....	7
Yellow.....	7
White.....	9
Gray.....	11
Black.....	15
Minerals of Semi-Metallic Ordinary Lustre.....	19
Black Streak.....	19
Brown ".....	21
Red ".....	23
Yellow ".....	25
Green ".....	27
Blue ".....	29
Minerals of Non-Metallic Lustre, White or Gray Streak.....	31
Very Soft.....	31
Soft.....	37
Medium Hardness.....	43
Hard.....	45
Very Hard.....	49
Auxiliary Table for Determination of Minerals of Non-Metallic Lustre and	
Colorless Streak, Soluble in Water.....	55
Insoluble in Water, effervescing with Hydrochloric Acid.....	57
Insoluble in Water, not effervescing with Acids.....	59
Yield Water when heated.....	59
Yield little or no Water when heated.....	61
Blow Pipe Tests for Gold and Silver Ores.....	62
Blow Pipe Assay.....	65
Scale of Hardness.....	67



INDEX.

	PAGE.		PAGE.
Agalmatolite.....	59	Calamine.....	42, 59
Albite.....	48, 61	Caledonite.....	36, 56
Allanite.....	48, 59, 61	Calcite.....	36, 56
Allophane.....	38, 59	Carnat.....	59
Altaite.....	8	Carpholite.....	59
Alunogen.....	30, 54	Cassiterite.....	20, 24, 48
Amblygonite.....	46, 60	Celestite.....	38, 61
Amphibole.....	46	Cerargyrite.....	30, 60, 63
Analcite.....	44	Cerolite.....	34, 59
Andalusite.....	44, 52, 61	Cerussite.....	32, 56
Anglesite.....	36, 61	Chabazite.....	42, 59
Anhydrite.....	38, 61	Chalcedony.....	50, 61
Annabergite.....	26, 59	Chalcocopyrite.....	8
Anthracite.....	18	Chalocite.....	12
Antimony.....	8	Chiasolite.....	61
Apatite.....	42, 61	Chloritoid.....	46, 59
Apophyllite.....	42, 58	Chromite.....	16
Aragonite.....	40, 57	Chondrodite.....	50
Argentite.....	12, 63	Chrysolite.....	50, 61
Arsenic.....	8	Chrysocolla.....	20, 22, 28, 36, 59
Arsenolite.....	32, 60	Chrysoberl.....	52, 61
Arsenopyrite.....	10	Cinnabar.....	22
Asphaltum.....	18	Coal, brown.....	20
Autunite.....	24	Coal, mineral.....	18
Axinite.....	50, 61	Coeruleolactite.....	42
Azurite.....	22	Coloradoite.....	14
Barite.....	38, 61	Copper.....	6
Bastite.....	59	Corundum.....	52, 61
Berthierite.....	12	Cuprite.....	22
Beryl.....	52, 61	Cyanite.....	46, 61
Biotite.....	34	Datolite.....	42, 59
Bismuth.....	8	Dewezlite.....	36, 59
Bismuthinite.....	12	Diamond.....	52, 61
Blende.....	18, 20, 24, 40	Diaspore.....	48, 59
Borax.....	34, 54	Dolomite.....	40, 57
Bornite.....	6	Domeykite.....	8
Braunite.....	18	Dyocrasite.....	12, 63
Breithauptite.....	6	Ekebergite.....	44, 61
Brookite.....	44	Electrum.....	6
Brown coal.....	20	Enargite.....	14
Brucite.....	34, 59		

	PAGE.		PAGE.
Enstatite.....	42, 44	Magnesite.....	57
Epidote.....	48, 61	Magnetite.....	16, 42
Epsomite.....	32, 55	Malachite.....	26
Erythrite.....	22	Manganite.....	16
Fassaite.....	61	Margarite.....	42, 61
Fibrolite.....	50, 61	Melaconite.....	16
Fluorite.....	40, 61	Mercury.....	8
Franklinite.....	16, 59	Millerite.....	6
Galenite.....	12	Mimetite.....	61
Garnet.....	50, 61	Mineral Coal.....	18
Genthiite.....	26	Mirabilite.....	32, 54
Gersdorffite.....	10	Molybdenite.....	10
Glauberite.....	30, 55	Mordenite.....	42
Glanconite.....	26	Morenosite.....	55
Gold.....	6, 62	Muscovite.....	26, 32, 61
Goslarite.....	32, 55	Natrolite.....	44, 58
Goethite.....	20, 24	Nicolite.....	6
Graphite.....	14	Nitre.....	32, 54
Gypsum.....	32, 53	Octahedrite.....	46, 61
Halite.....	34, 55	Oligoclase.....	48, 61
Halloysite.....	59	Omphacite.....	61
Halotrichite.....	32, 54	Opal.....	46, 61
Hausmannite.....	16	Orpiment.....	24
Hematite.....	14, 16, 22	Orthoclase.....	48, 61
Hepatic Cinnabar.....	20	Ozocerite.....	20
Hessite.....	8	Palagonite.....	24
Homichlin.....	6	Penninite.....	24
Hydrophite.....	59	Petzite.....	18
Hydrozincite.....	34, 56	Phlogopite.....	36
Hypersthene.....	46	Picrolite.....	59
Iolite.....	18, 52, 61	Platinum.....	12
Iridosmine.....	10	Polybasite.....	14, 64
Iron.....	14	Prehnite.....	48, 59
Jefferisite.....	30	Proustite.....	22, 64
Johannite.....	26	Pseudomalachite.....	26
Kallinite.....	34, 55	Psilomelane.....	18, 20
Kaolinite.....	32, 59	Pyrrargyrite.....	22, 63
Labradorite.....	48, 61	Pyrite.....	6
Lapis Lazuli.....	28	Pyrolusite.....	10
Lamontite.....	38, 59	Pyromorphite.....	38, 61
Lazulite.....	44, 59	Pyrophyllite.....	30, 59
Lead.....	10	Pyroxene.....	42, 44, 61
Leidyite.....	30	Pyrrhotite.....	6
Lepidolite.....	36, 60	Quartz.....	50, 61
Leucopyrite.....	10	Rhodonite.....	48, 61
Limonite.....	20, 24	Ripidolite.....	20, 50, 61
		Rutile.....	20, 50, 61

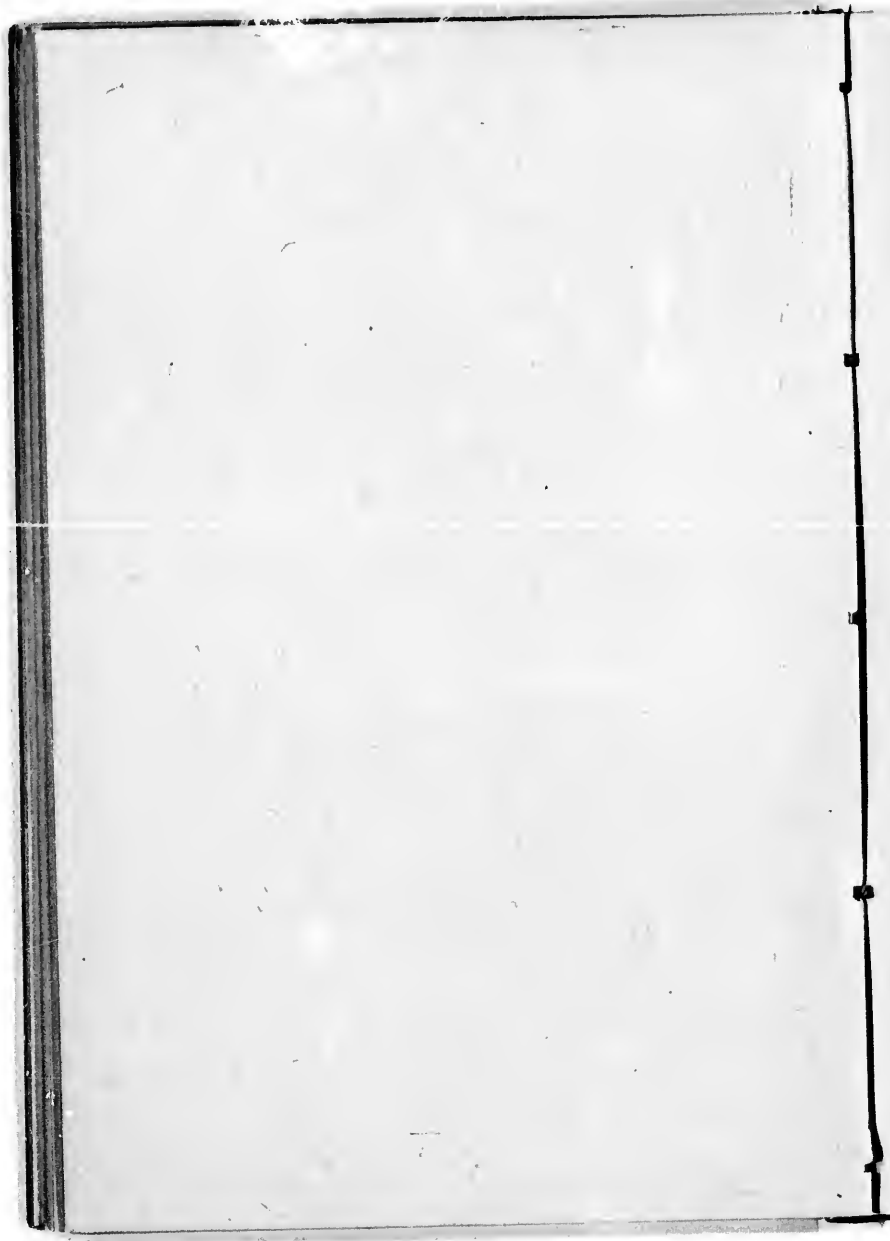
INDEX.

75

PAGE
 57
16, 42
 20
 16
42, 61
 16
 8
 6
 61
 18
32, 54
 10
 42
 55
20, 32, 61
44, 58
 6
32, 54
46, 61
48, 61
 61
46, 61
 24
48, 61
 20
 24
 24
 18
 36
 59
 12
14, 64
48, 59
22, 64
 26
18, 20
22, 63
 6
 10
38, 61
30, 59
42, 44, 61
 6
50, 61
48, 61
 50
20, 50, 61

PAGE
 Sal-Ammoniac.....32, 54
 Scheelite..... 61
 Schorlomite52, 61
 Scorodite.....40, 59
 Sapolite..... 34
 Serpentine36, 59
 Siderite.....40, 57
 Silver.....8, 62
 Siphylite..... 20
 Smaltite.....10, 14
 Smectite30, 59
 Smithsonite42, 57
 Sodalite.....46, 61
 Sphalerite.....18, 20, 24, 40, 61
 Spinel.....52, 61
 Spodumene.....48, 61
 Staurolite.....52, 61
 Stephanite.....12, 14, 61
 Stibnite 12
 Stilbite.....38, 59
 Stilpnomelane.....20, 38, 59
 Stolzite..... 61
 Stromeyerite14, 61
 Strontianite40, 56
 Succinite.....34, 58
 Sulphur 24
 Sylvanite.....10, 62
 Talc.....30, 61
 Tantalite..... 16

PAGE
 Tellurium..... 8
 Tenorite..... 16
 Tetradymite 10
 Tetrahedrite 12
 Thomsonite 44, 59
 Thuringite..... 26
 Titanite44, 61
 Topaz.....52, 61
 Tourmaline50, 61
 Tremolite..... 61
 Triphylite.....40, 61
 Tschermigite30
 Turquoise46, 59
 Uraninite 26
 Vesuvianite56, 61
 Vivianite..... 28
 Wavellite 59
 Whitneyite 8
 Willemite.....14, 61
 Witherite40, 56
 Wolframite 20
 Wollastonite42, 61
 Wulfenite36, 61
 Zincite 22
 Zircon.....52, 61
 Zoisite46, 61



OTHER WORKS BY PROF. WHEELER.

DETERMINATIVE MINERALOGY. A practical guide to the recognition of mineral species, chiefly by physical characteristics. Price.....\$1.00.

NATURAL HISTORY CHARTS. Five in number, one each of the following: MAMMALIA; BIRDS; REPTILES and FISHES; INVERTEBRATES; MINERALS, ROCKS and FOSSILS. In all, over 700 illustrations. Wholly hand colored. Price of each chart, \$7.00. The set,.....\$30.00.

NATURAL HISTORY PRIMER. A concise descriptive work on ZOOLOGY and MINERALOGY. Price.....\$1.00.

CATALOGUS POLYGLOTTUS. Or classified list of the more important animals, minerals and fossils in Latin, English, French, German and Spanish; for Scientific Travelers, Collectors, Curators of Museums and others. Price.....\$2.00.

IN PREPARATION.

THE CHEMISTRY OF BUILDING MATERIALS.

COPYRIGHT
C. GILBERT WHEELER.

1878.

MINERALOGICAL CHART

BY

C. GILBERT WHEELER,

Professor in the University of Chicago. Formerly Assistant
State Geologist of Missouri.

The Chart consists of over two hundred colored illustrations of mineral species, including all the most important and typical groups.

The plates are *not printed in colors*, but are lithographs, carefully and laboriously colored by hand, the only method employed in scientific illustration where accurate and satisfactory results are attained. *The execution is of a character not heretofore seen in charts*, but only in such works as the monographs of leading scientists or the publication of learned societies.

The minerals are correctly reproduced, not only in form and color, but also in *lustre*.

In addition to drawings of leading fossils and somewhat of stratigraphical geology, there are also a large number of special illustrations of crystallographic form.

Each Chart is made up of five sheets of plates, fourteen by twenty-four inches, and two columns of text, running the whole length of the Chart. This text, though concise, is abundantly descriptive, and, with some additional matter, is also published in book form. No other text-book in Natural History is necessary, as the field covered by this is sufficiently extensive to meet the wants of the best Schools and Academies. Unless specially ordered upon rollers, each Chart is mounted sectionally so as to fold and admit of being placed in large, stout envelopes, which accompany the set. When ordered upon rollers, they are without marginal text, but in this case a text-book is furnished without extra charge.

An edition has also been prepared with German, Spanish, French, Bohemian and Norwegian text.

Price of each Chart, mounted, four feet by three, **\$7.00**. Text-book, where furnished separately, **50 cents**.

Where returned free of expense, a set will be sent for examination.

PUBLISHED BY

S. J. WHEELER,

81 Clark Street, Chicago.

Sets of Minerals adapted for use in connection with these Outlines furnished by the publisher at moderate prices.

ART

erly Assistant

rations of mineral

hs, carefully and
entific illustration
e execution is of a
as the monographs

rm and color, but

of stratigraphical
tions of crystallo-

een by twenty-four
of the Chart. This
h some additional
in Natural History
ensive to meet the
ally ordered upon
nd admit of being
t. When ordered
ase a text-book is

Spanish, French,

.00. Text-book,

xamination.

reet, Chicago.

utlines furnished by



