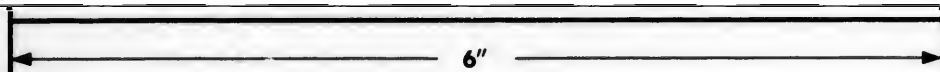




EVENING VIEW AT ST. JOHNS, P.Q.

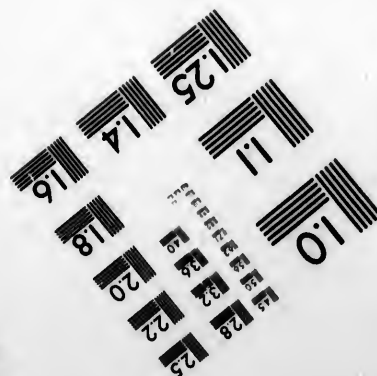
settler had levelled many of the giants of the forest and laid the foundation of the number of prosperous towns and villages which are now scattered along the banks of the river. This peaceful time was somewhat broken by a period of suspense, culminating in the war of 1812. This war was of great interest to the people of the Richelieu valley; the action at Lacolle Mill, especially being a great fiasco, as (in the darkness of a night attack on Lacolle Mill) they mistook their own troops for the enemy, and, after some obstinate and bloody fighting, finally fell back to Champlain.

Isle aux Noix was the scene of a sharp naval engagement, too, in this war, resulting in the capture of the



Photographic
Sciences
Corporation

23 WEST MAIN STREET
WEBSTER, N.Y. 14580
(716) 872-4503



afterwards fitted out and took part with three small gunboats in a sortie (Colonel Murray and Captain Everard) up the lake, in which was devastated the barracks, arsenals and public edifices of Plattsburgh, Burlington, Champlain, Swanton, etc., the flotilla returning in safety after spreading terror in all parts of the adjoining country.



CAMPING ON THE BANKS OF THE RICHELIEU.



Canadian Institute for Historical Microreproductions

Institut canadien de microreproductions historiques

1980

Generals Macomb and Wilkinson, with a force of about five thousand men and a 12-pounder, attacked the old stone mill garrisoned by a force under the command of Major Handcock, but failing to take it after a cannonade lasting two hours and a half, during which the British made an unsuccessful sortie, aided by reinforcements from Isle aux Noix, the Americans retired. The loss in this engagement was heavy on both sides, the Americans having 123 killed and wounded with 30 missing; while the British losses were 10 killed, 2 officers and 44 men wounded, and 4 missing.

The historical associations connected with this beautiful river are too many to be touched upon in anything but the briefest manner in the space at our command, but we hope that the reader will find from the few facts given, an added interest to the trip on the splendid steamer **Majestic**, which has been specially designed and built to ply upon these waters. This magnificent vessel, built of steel with all the most modern conveniences, is one of the handsomest and speediest vessels on the rivers or lakes of Canada, while her officials are all well known for their courtesy and attendance to the comfort of passengers.

Tight binding may cause shadows or distortion along interior margin/
La reliure serrée peut causer de l'ombre ou de la distortion le long de la marge intérieure

Blank leaves added during restoration may appear within the text. Whenever possible, these have been omitted from filming/
Il se peut que certaines pages blanches ajoutées lors d'une restauration apparaissent dans le texte, mais, lorsque cela était possible, ces pages n'ont pas été filmées.

Additional comments:/
Commentaires supplémentaires:

Only edition available/
Seule édition disponible

Pages wholly or partially obscured by errata slips, tissues, etc., have been refilmed to ensure the best possible image/
Les pages totalement ou partiellement obscurcies par un feuillet d'errata, une pelure, etc., ont été filmées à nouveau de façon à obtenir la meilleure image possible.

This item is filmed at the reduction ratio checked below/
Ce document est filmé au taux de réduction indiqué ci-dessous.

| | | | | | |
|--------------------------|--------------------------|--------------------------|-------------------------------------|--------------------------|--------------------------|
| 10X | 14X | 18X | 22X | 26X | 30X |
| <input type="checkbox"/> | <input type="checkbox"/> | <input type="checkbox"/> | <input checked="" type="checkbox"/> | <input type="checkbox"/> | <input type="checkbox"/> |
| 12X | 16X | 20X | 24X | 28X | 32X |

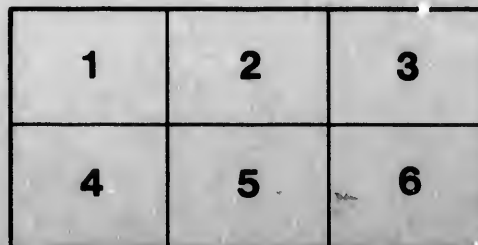
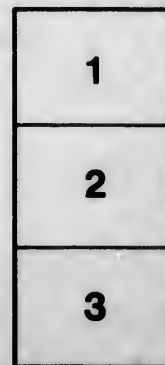
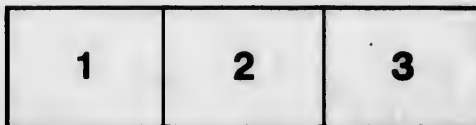
of adventures are told of the period when this island was occupied with troops. Its velvety sward, grand old shade trees and lovely position make it an ideal spot for a summer excursion. Several prettily wooded islands



FERRY LANDING.
(Old Boston and Montreal Team Route.)

mêmes.

Les images nécessaires des diagrammes suivants illustrent la méthode.



rrata
to

pelure,
n à



32X

the left bank of the river
ght when on his way from
be exchanged.) Hospital
various handsome summer
s of the river showing how
appreciated.

in view, bridging the river
On the right is the mouth
a quarter of a mile up is
Lacolle Mill was fought in
times the Canada Atlantic
we come to Bloody Island



UX NOIX, 1790.



CLOAK ISLAND, LAKE CHAMPLAIN.

Lake Champlain. Much has been written about this splendid and beautiful stretch of water, but full appreciation of the loveliness of it can only be obtained by familiarity. One is continually finding some new charm, some perfect piece of scenery hitherto unnoticed in the delightful general aspect. Apart from all else, Lake Champlain, called the "gateway of the country" by the Mohawks, has historical associations which fill volumes, while it has been navigated by regular lines of sailing sloops and steamers since the very beginning of times. A great event was that when, in 1802, the second steamer ever built in America was launched on its fair waters at Burlington. This vessel, the *Vermont*



competition in the railroads became so keen as to be the country was opened up that the transportation business has declined, though numerous pleasure steamers testify to the increasing appreciation of the lake scenery and the popularity of its summer resorts.

Isle la Motte called by many writers the "pearl of Lake Champlain," is celebrated for its picturesque scenery, splendid roads and the luscious fruit raised on its fertile soil. It is the northernmost island of Lake Champlain, and is about seven miles long and two miles wide. From the island the Green Mountains and the Adirondacks are in plain sight, while scattered round on the shimmering waters of the lake are the numerous islands which comprise the county of Grand Isle, Vermont. Not that there is need to look further than the island whereon to feast the eye, or for amusements to while away the time; bicycling, driving and riding over the smooth, well-kept roads, tennis, croquet, etc., can all be enjoyed as fancy dictates, while the fishing and bathing cannot be surpassed. A point of great interest connected with the island is the old fort, built in 1666 by Captain la Motte, and dedicated to St. Anne. Over

answered with care and despatch. Our stock of Medicines is complete, warranted genuine, and of the best quality.

ROY CREAMERY

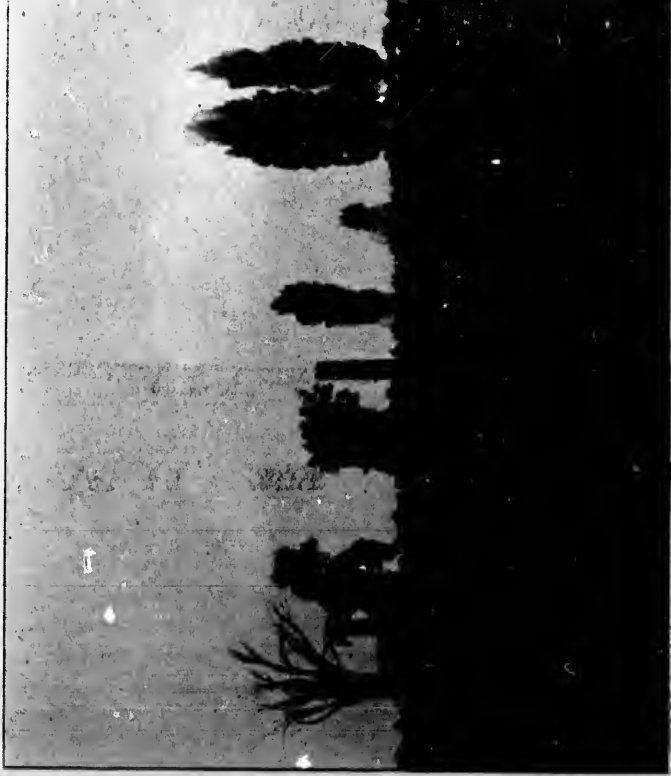
S. J. ROY,
Proprietor.

SABREVOIS, P.Q.
Capacity, 10,000 lbs. per day.

15 SKIMMING STATIONS.

| | | |
|-------|------------------------------------|------------------|
| No. 1 | Iberville, Iberville Co. | on U. C. Railway |
| " 2 | St-Grégoire, Iberville Co. | on U. C. Railway |
| " 3 | Henryville, Iberville Co. | on U. C. Railway |
| " 4 | Grande-Ligne, St. Johns Co. | on G. T. Railway |
| " 5 | St. Angèle, Rouville Co. | on U. C. Railway |
| " 6 | Clarenceville, Missisquoi Co. | on U. C. Railway |
| " 7 | St. Valentin, St. Johns Co. | on U. C. Railway |
| " 8 | St. Thomas, Missisquoi Co. | on U. C. Railway |
| " 9 | Marleville, Rouville Co. | on U. C. Railway |
| " 10 | St. Alexandre, Iberville Co. | on C. V. Railway |
| " 11 | Leduc Siding, Iberville Co. | on U. C. Railway |
| " 12 | Farnham, Missisquoi Co. | on C. V. Railway |
| " 13 | Barbotte, Iberville Co. | on U. C. Railway |
| " 14 | St. Brigide, Iberville Co. | on C. V. Railway |

CENTRAL CREAMERY: ————— SABREVOIS.



INCLUDING

✻ ISLE AUX NOIX ✻

WITH ITS
BEAUTIFUL PARK.



1900.
THE BENALLACK LITHO. & PRINTING CO.
MONTREAL.

81504



WINDSOR HOTEL, ROUSE'S POINT, N.Y.

two hundred years ago mass was said on this spot for the first time in Vermont. There is now erected a chapel and shrine of St. Anne to which many pilgrimages are made. Parties of pilgrims can be landed at Point St. Anne by the Majestic at a convenient dock.

Plattsburg, with the new U.S. Army post, lies about twelve miles south of Isle la Motte.

Hotel Champlain, a magnificent summer hotel, capable of accommodating four hundred guests, is a little further south.

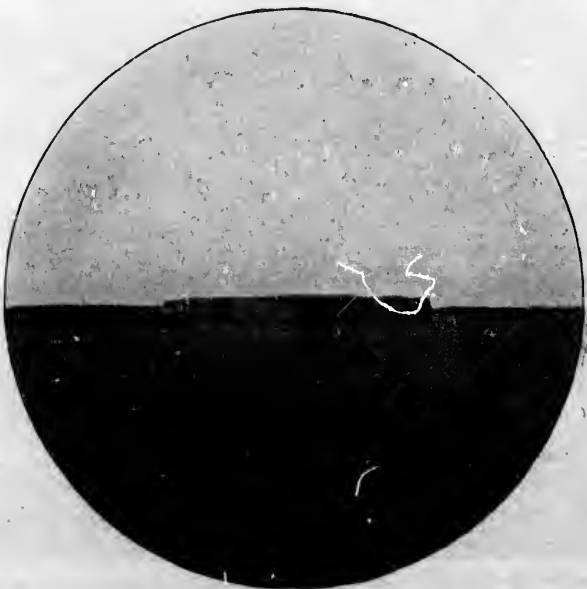
Au Sable Chasm is another point of great interest, and a popular place for excursions and picnics.

Phillipsburg. This popular summer resort on the north-eastern shore of the lake is a splendid objective or starting point from or to any of the points of interest described in this circular. The attractions here are numerous in respect to fishing, boating and scenery, while, as the old *chef lieu* of the county of Missisquoi, it is rich in historical and ancient military associations. For any excursions from the eastern townships this charming village makes a convenient starting point. There are several fine hotels and boarding houses for the accommodation of summer visitors.

ISLE AUX NOIX.



This charming island is probably one of the most historic and picturesque spots in Eastern Canada. The ancient buildings of grey cut stone, surrounded by moats and embankments, are like a peep at some old castle in Europe. Seen in the summer sunshine, the island is a delightful spot for a picnic or a holiday; while at night, with the soft moonlight glimmering through the leafy foliage of the splendid old trees, it would be hard to find a more romantic spot. Many attractions are offered by this island to the curio hunter. Numerous relics of bygone times, in the shape of Indian arrowheads, tomahawks, etc., may be found by a little searching, while the troops quartered in this old fortress have left many mementoes which are daily being found, comprising valuable and rare old coins and various parts of their accoutrements, etc. Visitors to the island are surprised at the beautiful views that can be obtained from nearly all parts of the island, and exclamations of delight are frequently heard as some particularly lovely spot is seen upon rounding a corner or mounting an embankment. The old burying grounds of the troops



FORT MONTGOMERY, HEAD OF RICHELIEU RIVER.

the first time in Vermont. There is now erected a chapel and shrine of St. Anne to which many pilgrimages are made. Parties of pilgrims can be landed at Point St. Anne by the Majestic at a convenient dock.

Plattsburg, with the new U.S. Army post, lies about twelve miles south of Isle la Motte.

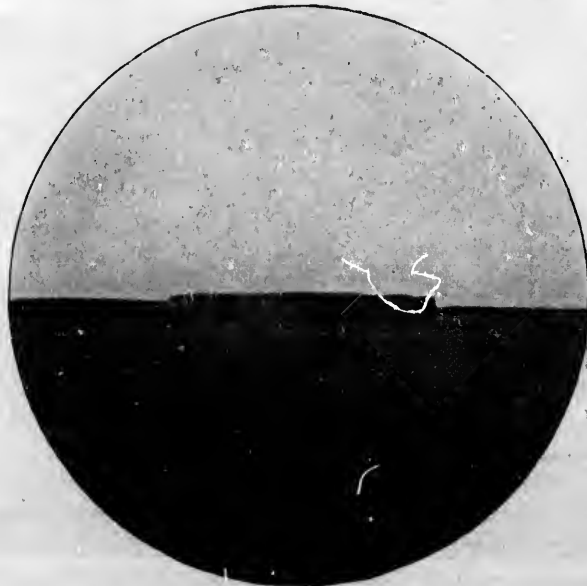
Hotel Champlain, a magnificent summer hotel, capable of accommodating four hundred guests, is a little further south.

Au Sable Chasm is another point of great interest, and a popular place for excursions and picnics.

Phillipsburg. This popular summer resort on the north-eastern shore of the lake is a splendid objective or starting point from or to any of the points of interest described in this circular. The attractions here are numerous in respect to fishing, boating and scenery, while, as the old *chef lieu* of the county of Missisquoi, it is rich in historical and ancient military associations. For any excursions from the eastern townships this charming village makes a convenient starting point. There are several fine hotels and boarding houses for the accommodation of summer visitors.



delight are frequently heard as some particularly lovely spot is seen upon rounding a corner or mounting an embankment. The old burying grounds of the troops



FORT MONTGOMERY, HEAD OF RICHELIEU RIVER.

st

stroke of the savage athletes, past the densely wooded



favorable place for encampment and passage.
The officers' quarters have been repaired and rendered comfortable, and suites of furnished rooms can be rented



OLD MAGAZINE, ISLE AUX NOIX.

name in history as the discoverer of such a scene. Later events proved rather more exciting, and, for a time, the river was the scene of many excursions led by Champlain against the Iroquois. Still later (1635), a fort at Sorel was built by Montmagny to repel the attacks of the Iroquois, who had subdued their hereditary enemies, the Algonquins and Hurons, and were making fierce attacks on the settlements of the whites. De Tracy (1666) and De Courcelles had both led expeditions up this river against the war-like Iroquois, and two more forts were erected at Sorel for protection from the attacks of these desperate savages.

Lake Champlain and the Richelieu River were the means of carrying many hostile expeditions during the numerous border wars that ensued between the contending colonists of New England and Canada; the fortunes of war inclining first to one side then the other. French

FREIGHT SCHOONER, LAKE CHAMPLAIN.

fruit and other light refreshments can also be obtained at the splendid café. Pool tables, shooting gallery and bowling alley provide another source of amusement in wet or showery weather, while kiosks looking out over some especially pretty scene are dotted here and there. Bathers have been looked after and a comfortable bathing house built, while swings have been erected in which one may enjoy a lounge during a hot summer's day under an ancient shade tree. Every attention is paid to the comfort of picnic and excursion parties, and the easy and pleasant way in which the island can be reached from either Montreal (by train to St. John's, thence by steamer *Majestic*) or with equal ease from other points, combine to make this an ideal place for a summer outing.

... we have very little account, but of which, could the waters speak, we should have tales enough to



HARBOUR AT ST. JOHN'S, P.Q.



A DRIVE ON ISLE LA MOTTE.

him, but his allies of a few months, the children of the forest, were powerful enough to make the expedition a success.



Gen



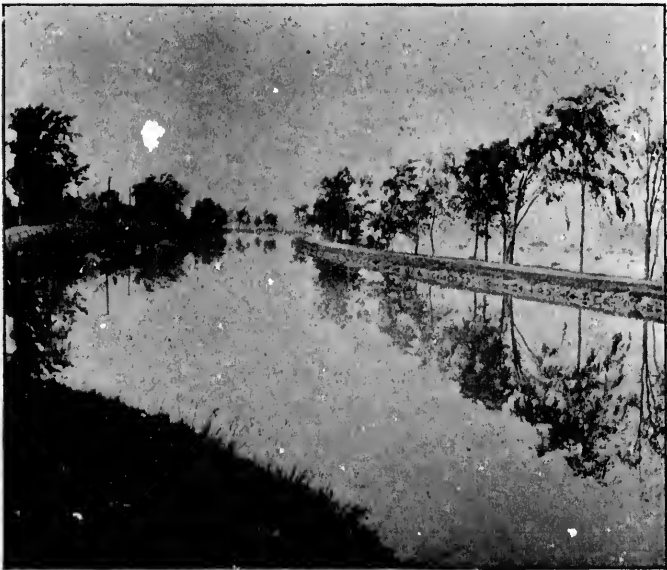
SHRINE OF STÉ-ANNE'S, ISLE LA MOTTE.

Reasonable rates can be made from all parts of southern Quebec, by rail to St. Johns and Lacolle docks, and thence by Steamer *Majestic* to St. Anne de Isle La Motte. For rates and other information, apply to B. V. Naylor, Noyan, P.Q.



CAMP SCENE.

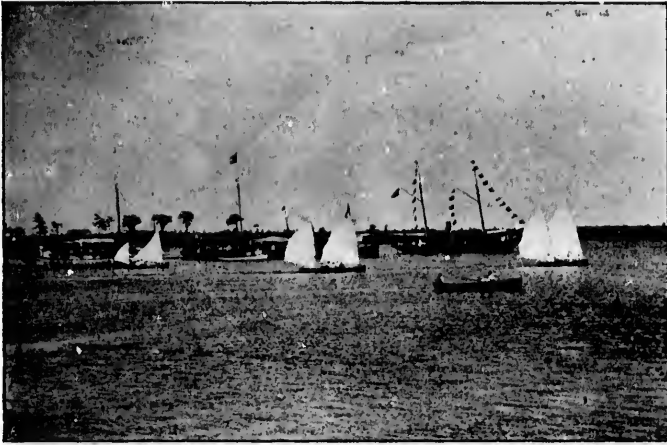
a stronger investment of St. John's, which, after a siege of forty-five days, surrendered, the garrison despairing of being succored. The year 1776 saw General Arnold retreating rapidly up the Richelieu, the following year saw General Burgoyne, with several thousand troops, a number of Indians and a powerful train of artillery, on his way to Lake Champlain to battle with the colonists—the fortunes of war having turned. After the close of the revolutionary war, peace and progress ensued for a number of years and during this time the axe of the



EVENING VIEW AT ST. JOHNS, P.Q.

settler had levelled many of the giants of the forest and laid the foundation of the number of prosperous towns and villages which are now scattered along the banks of the river. This peaceful time was somewhat broken by a period of suspense, culminating in the war of 1812. This war was of great interest to the people of the Richelieu valley; the action at Lacolle Mill, especially being a great fiasco, as (in the darkness of a night attack on Lacolle Mill) they mistook their own troops for the enemy, and, after some obstinate and bloody fighting, finally fell back to Champlain.

Isle aux Noix was the scene of a sharp naval engagement, too, in this war, resulting in the capture of the



REGATTA, ST. JOHNS YACHT CLUB.

two American gunboats, the *Growler* and *Eagle*, which were taken in an attack on the fort—an unfortunate occurrence for the Americans, as these vessels were afterwards fitted out and took part with three small gunboats in a sortie (Colonel Murray and Captain Everard) up the lake, in which was devastated the barracks, arsenals and public edifices of Plattsburgh, Burlington, Champlain, Swanton, etc., the flotilla returning in safety after spreading terror in all parts of the adjoining country.



CAMPING ON THE BANKS OF THE RICHELIEU.



BARRACKS AND OFFICERS' QUARTERS, ISLE AUX NOIX.

Lacolle Mill was again, in the year 1814, the scene of a desperate struggle between the British and Americans. Generals Macomb and Wilkinson, with a force of about five thousand men and a 12-pounder, attacked the old stone mill garrisoned by a force under the command of Major Hancock, but failing to take it after a cannonade lasting two hours and a half, during which the British made an unsuccessful sortie, aided by reinforcements from Isle aux Noix, the Americans retired. The loss in this engagement was heavy on both sides, the Americans having 123 killed and wounded with 30 missing; while the British losses were 10 killed, 2 officers and 44 men wounded, and 4 missing.

The historical associations connected with this beautiful river are too many to be touched upon in anything but the briefest manner in the space at our command, but we hope that the reader will find from the few facts given, an added interest to the trip on the splendid steamer **Majestic**, which has been specially designed and built to ply upon these waters. This magnificent vessel, built of steel with all the most modern conveniences, is one of the handsomest and speediest vessels on the rivers or lakes of Canada, while her officials are all well known for their courtesy and attendance to the comfort of passengers.

Passing up the river on this palatial steamer from the town of

St. John's with its ever extending trade, fine hotels, manufactories, etc., and its many attractions and amusements. we pass on the left the barracks which are new built upon the site of the old fort which had stood so many attacks. About half-a-mile further on we see the earthworks, thrown up by Montgomery in 1775, and a creek, emptying into the river here, still bears the name of "Montgomery's Creek."

Sabrevois, a pretty little village on the left bank of the river is next passed, when we come to

St. Paul de Isle aux Noix, which has already established a favorable reputation as a pleasant summer resort. A fine commodious hotel stands close to the river, and good hunting, fishing and boating can be had, while close by is an excellent bathing place with sloping, sandy beach.

Isle aux Noix. This unparalleled spot for excursions and picnics is reached soon after. The massive buildings are full of interest, and many romantic tales of adventures are told of the period when this island was occupied with troops. Its velvety sward, grand old shade trees and lovely position make it an ideal spot for a summer excursion. Several prettily wooded islands



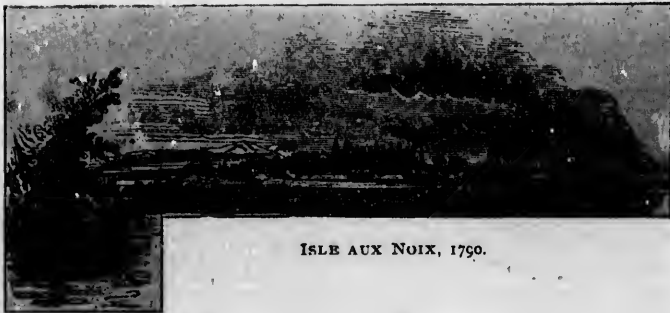
FERRY LANDING.
(Old Boston and Montreal Team Route.)



FORT AT CHAMBLY AND VIEW OF CAMP, 1814.

are dotted about here, and in the fall these islands are a favorite ground for duck-hunting. Above these islands we come to Vaughan's Ferry—the old Montreal and Boston team route—now disused since the building of the Richelieu bridge. (The battle between the *Eagle* and *Growler* and the British gun-boats took place right here, and in the house on the left bank of the river General Hull stayed over night when on his way from Montreal to the "lines" to be exchanged.) Hospital Island is now passed, and various handsome summer residences stand on the banks of the river showing how the beauties of this river are appreciated.

Lacolle Bridge then comes in view, bridging the river between Lacolle and Noyan. On the right is the mouth of Lacolle River, and about a quarter of a mile up is the spot where the battle of Lacolle Mill was fought in the war of 1812. Then comes the Canada Atlantic Railway bridge, and further on we come to Bloody Island



ISLE AUX NOIX, 1790.

Lighthouse, so called from an old legend of a cattle-drover being decoyed there and murdered for his money. After passing the lighthouse the river widens somewhat and we reach

Fort Montgomery "across the line." This fort, although not so prettily situated as Isle aux Noix is probably in better condition. It is in charge of a keeper, and is a very interesting place to visit.

Rouse's Point, a thriving town with several factories and with a handsome summer hotel and many pretty residences comes next, favorably situated at the head of the river. Boating, sailing and fishing are very popular amusements and attract many visitors.



CLOAK ISLAND, LAKE CHAMPLAIN.

Lake Champlain. Much has been written about this splendid and beautiful stretch of water, but full appreciation of the loveliness of it can only be obtained by familiarity. One is continually finding some new charm, some perfect piece of scenery hitherto unobserved in the delightful general aspect. Apart from all this, Lake Champlain, called the "gateway of the country" by the Mohawks, has historical associations which would fill volumes, while it has been navigated by regular lines of sailing sloops and steamers since the very earliest times. A great event was that when, in 1808, the second steamer ever built in America was launched on its fair waters at Burlington. This vessel, the *Vermont*,



VIEW OF ROUSE'S POINT, N. Y.

had a speed of four miles an hour, and was unfortunately sunk near Isle aux Noix in 1815. A regular line of steamers plied between Whitehall and St. John's till the competition in the railroads became so keen as the country was opened up that the transportation business has declined, though numerous pleasure steamers testify to the increasing appreciation of the lake scenery and the popularity of its summer resorts.

Isle la Motte called by many writers the "pearl of Lake Champlain," is celebrated for its picturesque scenery, splendid roads and the luscious fruit raised on its fertile soil. It is the northernmost island of Lake Champlain, and is about seven miles long and two miles wide. From the island the Green Mountains and the Adirondacks are in plain sight, while scattered round on the shimmering waters of the lake are the numerous islands which comprise the county of Grand Isle, Vermont. Not that there is need to look further than the island whereon to feast the eye, or for amusements to while away the time; bicycling, driving and riding over the smooth, well-kept roads, tennis, croquet, etc., can all be enjoyed as fancy dictates, while the fishing and bathing cannot be surpassed. A point of great interest connected with the island is the old fort, built in 1666 by Captain la Motte, and dedicated to St. Anne. Over



RUINS OF OLD MARINE BARRACKS, ISLE AUX NOIX.



THE REVELENE AND SOUTH END OF PARK, ISLE AUX NOIX.

contain many names well known in Canadian history, and well repay a visit to the northern portion of the island. Regarding modern conveniences there has been expended a considerable sum in making the island a favorable place for excursionists and picnic parties. The officers' quarters have been repaired and rendered comfortable, and suites of furnished rooms can be rented



OLD MAGAZINE, ISLE AUX NOIX.

for long or short periods for fishing, boating and holiday parties. Artesian wells have been driven, ensuring a supply of pure, cool water, while a capacious ice-house is filled for the use of visitors. On the smooth, lawn-like square of the grounds—with the old sun-dial still faithfully recording the hours—are tennis courts, croquet grounds and a running track, baseball and golf grounds. One of the large halls in the main building has been fitted up and now forms a magnificent dancing hall. Meals of first-class quality can be obtained by visitors at a uniform charge of twenty-five cents per meal, and



FREIGHT SCHOONER, LAKE CHAMPLAIN.

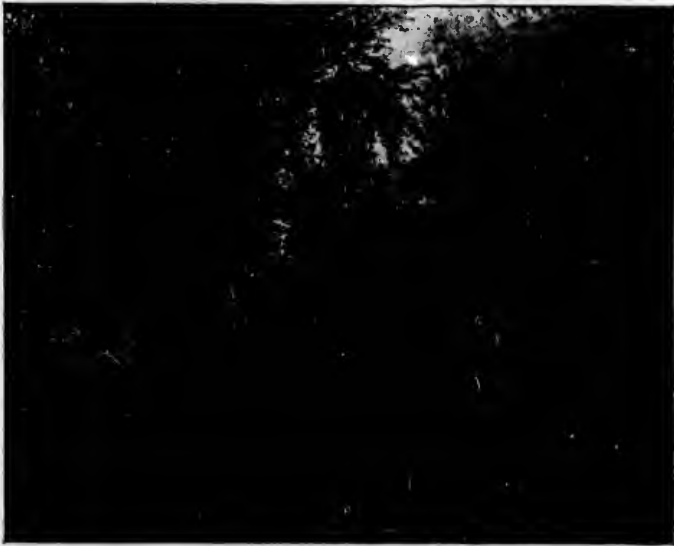
fruit and other light refreshments can also be obtained at the splendid café. Pool tables, shooting gallery and bowling alley provide another source of amusement in wet or showery weather, while kiosks looking out over some especially pretty scene are dotted here and there. Bathers have been looked after and a comfortable bathing house built, while swings have been erected in which one may enjoy a lounge during a hot summer's day under an ancient shade tree. Every attention is paid to the comfort of picnic and excursion parties, and the easy and pleasant way in which the island can be reached from either Montreal (by train to St. John's, thence by steamer *Majestic*) or with equal ease from other points, combine to make this an ideal place for a summer outing.

Pilgrimage of Ste-Anne de Isle la Motte.

LAKE CHAMPLAIN.

Lake Champlain, situated on the border of Canada and the United States, from which the waters of the Richelieu River run, is a fitting memorial to keep for generations to come the memory and name of the founder of Quebec, Samuel de Champlain, the father of New France.

In July, 1609, the intrepid explorer, then warring with the Hurons against the ferocious Iroquois, visited for the first time the upper waters of the Richelieu and navigated the quiet waters of the lake which to-day bear his name. Only two of his countrymen accompanied



A DRIVE ON ISLE LA MOTTE.

him, but his allies of a few months, the children of the forest, were powerful enough to make the expedition a success.

Isle la Motte was, no doubt, one of the first spots on which he planted the French flag and the Cross of Christ. A few years afterwards, Captain Lamothe built Fort Ste-Anne, and gave his name to the island. Isle La Motte is situated in the northern part of the lake about thirty-five miles distant from Burlington, Vermont, sixteen miles from Plattsburg, New York, and fifteen miles from the Bay of St. Albans, Vermont. Its area is seven miles long by two miles wide.

The island is celebrated for its beautiful and picturesque scenery, the air is pure and vigorating, which makes it an ideal resting place. Because of its many beauties, it has often been called the "Pearl of Lake Champlain"—a title which it justly deserves.



SHRINE OF STÉ-ANNE'S, ISLE LA MOTTE.

Reasonable rates can be made from all parts of southern Quebec, by rail to St. Johns and Lacolle docks, and thence by Steamer *Majestic* to St. Anne de Isle La Motte. For rates and other information, apply to B. V. Naylor, Noyan, P.Q.

ORIGIN OF PILGRIMAGES TO STE-ANNE DE L'ISLE
LA MOTTE.

Shortly after his consecration as Bishop of Burlington, on the 30th October, 1853, His Holiness, Mgr. De Goësbriand,—having studied the history of Vermont,—found that the first mass said in the State of Vermont



STATUE OF STE-ANNE, ISLE LA MOTTE.

was celebrated at Pointe Ste-Anne, Isle La Motte, and that the place had been consecrated to Ste-Anne for over two hundred years.



CHAPEL OF ST. ANNE'S, ISLE LA MOTTE.

His Holiness then took the means of securing the place, yet sanctified by the presence of the first missionaries, who offered there the holy sacrifice of mass, and, in 1892, bought a part of the fort and built a small chapel on the slope of the hill and erected on the top a cross thirty-two feet high. On the anniversary of Ste-Anne, July 26th, 1893, Mgr. de Goësbriand, accompanied by several priests and two hundred pilgrims, went to Isle La Motte to consecrate the Chapel, a statue of Ste-Anne and the Cross, also a well dug in the interior of the



INTERIOR OF ST. ANNE'S SHRINE, ISLE LA MOTTE.

fort. On the same day, the venerable bishop presented the little chapel with relics of Ste-Anne and the Holy Virgin, which he had brought from Rome. In the course of the winter of 1893-94 a wharf was built, and the following summer pilgrims began to flock there. Since the consecration of the Chapel of Ste-Anne thousands of pilgrims have come to pray in the grotto. Mgr. De Goësbriand and Mgr. Michaud, his coadjutor, have always encouraged pilgrimages by their words and example, and many spiritual and temporal favours have been ob-

tained, and many of those who did not belong to our religion, who accompanied the pilgrims, returned home greatly edified.

As pilgrims are always accompanied by their pastors, they can put themselves under his guidance in the exercise of their spiritual duties. They can make the way of the cross, and obtain the ordinary indulgences attached to it by praying at each of the stations. Articles of devotion can be procured which will be blessed and indulged during the offices. There is accommodation for supplying meals to large numbers of pilgrims. Priests desiring to have a pilgrimage of their own should write a few weeks in advance, and address, REV. J. M. H. BASTIEN, Alburg, Vermont.

Pilgrims and others wishing masses to be said in the chapel, should also apply to the above address.



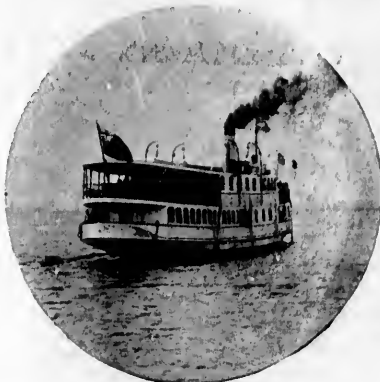
THE NEW STEEL SCREW
STEAMER

"Majestic"

(CAPTAIN B. V. NAYLOR)

*is designed to carry passengers
and excursion parties
on the*

**RIVER RICHELIEU and
LAKE CHAMPLAIN.**



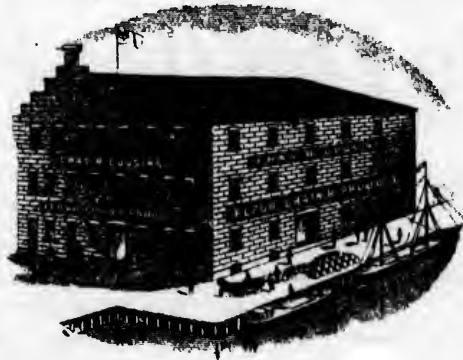
THE "MAJESTIC."

The latest improvements have been adopted in the design of the vessel, and her internal fittings and appointments are of the most modern and luxurious type. She is fitted throughout with electric light, and has a powerful searchlight. The "MAJESTIC" has a *guaranteed* speed of fifteen miles an hour. Every attention will be paid to the comfort, safety and convenience of passengers.

Any information can be obtained from
B. V. NAYLOR - - - - NOYAN, P.Q.

Chas. R. Cousins St. Johns, P.Q.

**WHOLESALE
FLOUR
GRAIN
AND
PRODUCE**



Always on hand,
at lowest prices;

| | | |
|----------------------------------|----------|---------------|
| "O.K." STRAIGHT BAKERS | - - - | } FOR BREAD. |
| "STANDARD," | " - - -" | |
| "GOLDEN SHEAF," HUNGARIAN PATENT | " - - -" | |
| "FIVE CALLAS," | " - - -" | |
| "WALZEN" PATENT | - - - | } FOR PASTRY. |
| "NORVAL," | " - - -" | |

And Several other Well-known Brands.

TEL., BELL 165

Gros en Detail

Pour vos materiaux
de constructions

INSTRUMENTS

ARATOIRS

EPICERIES

FERRONNERIES

PEINTURES

HUILES

VITRES

ETC., ETC.

...



ALLEZ CHEZ

COTE & FRERE,

Coin des rues Richelieu and St. Jacques,
ST. JEAN, P.Q.



Do You Use Paint?

*Most of the world does and most of the
world uses*

THE SHERWIN-WILLIAMS PAINT.

*It's made to paint buildings with,
inside and outside. It's made ready
for the brush. It's made for home use
and for practical painters too. It's
pure lead, pure zinc and pure linseed
oil, mixed by specially made machinery
operated by experts. It's made for you.*

Made by

THE SHERWIN-WILLIAMS Co.,
PAINT AND VARNISH MAKERS.



Cleveland

Chicago
Toronto

New York
San Francisco

Montreal
Kansas City.

Boston

O. LANGLOIS . . . FURNITURE DEALER.



Always in store the greatest Choice of

- | | |
|------------------------|----------------------|
| Parlor Sets | Iron Beds |
| Parlor Tables | Children Cribs |
| Fancy Tables | Cradles |
| Dining-room Chairs | Chairs of all kinds. |
| Dining-room Tables | Baby Carriages |
| Sideboards | Desks |
| Kitchen Tables | Book Cases |
| Lounges | Wardrobes |
| Sofa-beds | Curtain Poles |
| Folding-beds, patented | Picture Frames |
| Chamber Sets | Hall Racks |
| Spring Beds | Newspaper Racks |
| Mattresses | Basels |
| Bedsteads | Screens |

Specialty: UNDERTAKER.

49 and 51 RICHELIEU ST. - - ST. JOHNS, P.Q.

Hatter and Furrier

AND ALSO
Dyed and
Repaired **Furs.**

Z. LARIVIERE.
46 Rue Richelleu - St. Jean, P.Q.

Chapellier et Manchonnier

TEINTURE ET REFAIT LES

Fourrures

A NEU.



Machine Shops

D. LALIBERTE, St. JOHNS, P.Q.

All kinds of Machine Work for
BUTTER AND CHEESE FACTORIES
and all other Town and Country trade attended to at shortest
notice. GIVE ME A CALL.

Francois Payette,

MARCHAND-TAILLEUR.

SPECIALITE :

Hardes Faites Pour Hommes et Enfants.

MERCERIES DE TOUTES SORTES.

Toutes les Commandes sont Executees avec Promptitude, Elegance
et dans les Derniers Cout.

TELEPHONE BELL., No. 50.

ST. JEAN, P.Q.

J. E. McNULTY & CIE.,

- - IMPORTATEURS DE - -

Nouveautés, Marchandises Seches,

Hardes Faites: **Epiceries, Ferronneries, Etc.**
Une Spécialité, Gros et Detail.

Rue Richlieu, No. 44, enseigne de la Boule Rouge - ST. JEAN, P.Q.

J. H. RACIGOT,

ST. JOHNS, P.Q.

JEWELLER.

Watches, Clocks, Jewellery, and Sewing Machines.

AGENT FOR THE FOLLOWING PIANOS

Stanley, Berlin, Wormwith and Decker, and also Graphophones
Wholesale and Retail.

BELL TELEPHONE NO. 43.

RICHELIEU TELEPHONE NO. 36.

James O'Cain

Dealer in
COAL AND WOOD.

CUSTOM HOUSE BROKER.
GENERAL INSURANCE AGENT.

Nos. 1 & 2 St. George Street - ST. JOHNS, P.Q.

Hotel St. Paul

DE ISLE AUX NOIX.



First-Class Table and Board
by the week or day.

Teams meet Passengers
at the boat or train.

Reduced Rates
can be procured from Montreal to St. Johns
by rail and thence by steamer "MAJESTIC."

Excellent place for
Fishing, Hunting, Etc.

Jos. C. Bissonette.

Wheel direct to

...ARPIN'S...

for Bicycle Sundries of all sorts.

Sporting Goods, Fishing Tackle, Etc.



BOATS, GUNS, TENTS AND
BICYCLES TO LET AT **ARPIN'S, ST. JOHNS.**

Laurent Moreau

IMPORTATEUR DE

Groceries, Vins, Liqueurs & Cigars.

83-85 Richelieu Street,
ST. JEAN, P.Q.

ATELIER PHOTOGRAPHIQUE

DE

J. L. Pinsonneault

No. 75 RUE RICHELIEU, ST.-JEAN.

Mouleurs et Cadres de toutes sortes.

Spécialité : PHOTOGRAPHIE SUR ACIER.

C. O. GERVAIS & FRERE,

...Saint Jean, P.Q.

MAGASIN GENERAL DE

Merchandises seches,

Epiceries, Ferronneries, Peintures,

—>>> **Bois plie pour Voitures,**

Charbon, Etc., Etc.

—++++—

Specialite : Pompes foulantes et citernes.Gros et detail.

**Canada
Hotel**

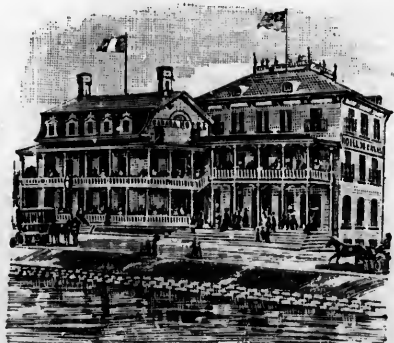
L. FORGUE, PROPRIETOR.

ST. JOHNS, P.Q.

...

TRAVELLERS

will find all the Comfort
they want at this Hotel.



CARRIAGES AT ARRIVAL AND DEPARTURE OF TRAINS.

**This
Recommended
House**

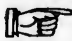
is beautifully situated on the shore of the Richelieu River, just opposite the far-famed Isle aux Noix.



**Board by the Day, Week or Month Special Prices for Families.
Large and airy Rooms. First-class accommodation.**

Finest place in the Province of Quebec for
BOATING, RIDING, AND SPORTS OF ALL KINDS.

Boats, Tents, Guns, Fishing Rods, etc., can be procured at the hotel.

 Reduced Rates can be procured by rail to St. Johns and thence by Steamer MAJESTIC direct to hotel.

ASK FOR OUR PRICES.

ANTOINE GOSSELIN & SON, St. Paul de l'Isle-aux-Noix, P.Q.

**Ottawa
River
Navigation
Co. & & &**

**ROYAL
MAIL LINE
Steamers
BETWEEN
MONTREAL AND
OTTAWA.**

Daily (except Sunday.)

LEAVE OTTAWA

7.30 a.m., arrive at Montreal 6.30 p.m.

LEAVE MONTREAL

(G.T.R. station, train to Lachine to connect with steamer)
8 a.m., arrive at Ottawa 6.30 p.m.

Most Charming River Scenery in America.

Indian Villages, Old Churches, Monasteries and Wind Mills of the old French regime.

SHOOTING THE RAPIDS.

Steamers connect at Montreal with Richelieu steamer for Quebec, and at Ottawa with steamers for Rideau Lake and Kingston.

WRITE FOR "SNAP SHOTS"—GUIDE.

R. W. SHEPHERD, MANAGING DIRECTOR,

HEAD OFFICE, 165 Common St., Canal Basin - - MONTREAL.

T. A. Cousins

 **Pulp Wood,
Insurance, Etc.**

68, RICHELIEU STREET,

ST. JOHNS, QUE.

Edouard Morel

FERBLANTIER ET PLOMBIER.

Appareil de Chauffage _____ Poeles de Toutes Sortes
a eau Chaude. & & une Specialite.

SAINT-JEAN, P.Q.

Teamster and Livery Teams.

WHEN YOU WANT A SMART TEAM CALL ON ME.

JOS. DUBOIS,

St. Johns, P.Q.



St. Johns Hotel.

F. MONNETTE, PROPRIETOR.

St. Johns, P.Q.

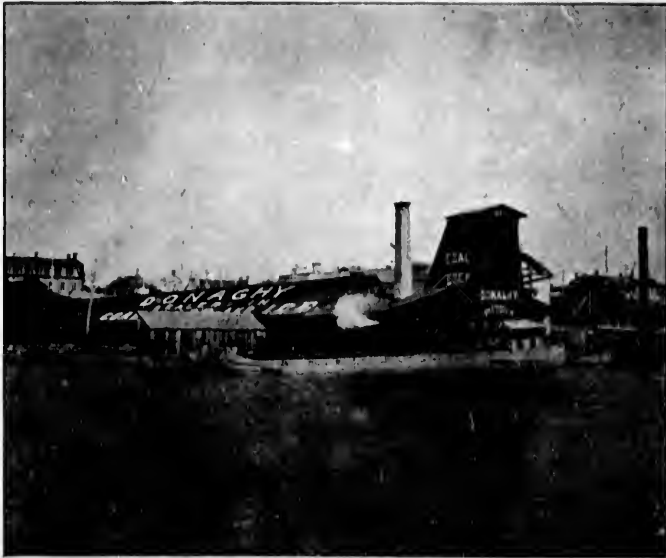


A. W. DEWAR,

Ice Cream Parlors,
Confectionery and Refreshments.

80 RICHELIEU ST.

St. Johns, P.Q.



John Donaghy Dealer in *COAL, WOOD and ICE.*
and CUSTOM HOUSE BROKER.
 ST. JOHNS, P.Q.

The celebrated *PITTSON COAL*, also Steam and Smiths' Coal
 always in stock.

Cord, Slab and Kindling Wood to Order....Orders filled at short notice.

P. O. Box 457.

Bell Telephone 108.

F. MARCHAND

WHOLESALE AND RETAIL
 ...DEALER IN...

Groceries
Cigars
Tobacco and
Fruits.



Orders for Camps and Picnics filled on
 shortest notice.

ST. JOHNS, P.Q.

BELL TELEPHONE, 67.

E. McCONKEY & CO.

Merchant Tailors.

DEALERS IN
Gents' Furnishings, Etc.

ST. JOHNS, P.Q.

Richard Goold ...IMPORTER

FINE Wines AND Liquors

GROCERIES

CIGARS

PROVISIONS

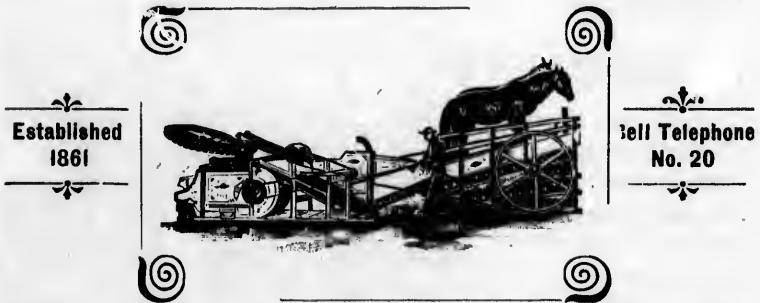
TOBACCOS

FRUITS, Etc.

WHOLESALE AND RETAIL.

→ St. Johns, P.Q.

J. & S. BESSETTE



**MACHINISTES ET
MANUFACTURIERS DE**

Machines Agricoles

Meulins a Battre,

Presses a Foin,

Pompes,

Machines a Hacher Fourage,

Velocipedes de Chemin de Fer,

Circular Saw Bench,

Appareils de Fromageries,

...IBERVILLE, P.Q.

ETC., ETC.

Telephone, Bell 112.

P.O. Box 225.

J. E. HEBERT,

MARCHAND-TAILLEUR

MERCHANT-TAILOR

135 Rue Richelieu - - St. Jean, P.Q.

55 et 53 Rue Richelieu

Telephone, Richelieu No. 133.

CHARLES MEUNIER,

Successeur de Meunier & Gregoire

MARCHAND DE

Marchandises Seches, Chapeaux, Epiceries, Ferronneries, Etc.

EN GROS ET EN DETAIL.

ST. JEAN, P.Q.

Habilllements Faits sur Commande.

Les Fournitures les plus riches sont toujours employées pour la confection de nos habits.

Un Tailleur de première classe est attaché à l'établissement.

Peintures de Toutes Especes, Huile de lin cuit, Bouillie et Double Bouillie

Vernis à Voitures, Vernis à Meuble, Vernis Blanc, Etc.

Pinceaux Assortis, Vitres et Mastic.

When you come to
St. JOHNS be sure
visit the

'Aberdeen'

Restaurant

where you will see
the finest Bar-room
in Canada ; also

Pool and Billiard Tables.
and other attractions.

A full line Wines, Li-
quors, and Cigars.

O. CHANGNON.



BELL TEL. 77.

RICHELIEU TEL. 31.

A. LONGTIN,

DEALER AND IMPORTER OF

Wines, Liquors and Cigars

WHOLESALE AND RETAIL.

147 Richelieu Street,
BLOCK CLEMENT.

St. Johns, P.Q.

5.

The Benallack _____
Lithographing & Printing Co.

8, 10 & 12 LATOUR ST.,

MONTREAL.

Q.
33.

Etc.

ges.
bits.

Etc.

COMMERCIAL and * * *

FINE COLOR LITHOGRAPHERS

AND HIGH CLASS LETTER PRESS

PRINTERS. * * * *

SPECIALTIES :

SHOW CARDS,

HANGERS,

POSTERS,

CALENDARS,

LABELS,

BONDS,

CHEQUES,

LETTER HEADS,

BILL HEADS,

Etc., Etc.

Maps and Plans of Every Description.

S

)

Samples and Quotations Cheerfully Furnished.

THE UNIVERSITY OF CHICAGO

PHYSICS DEPARTMENT

PHYSICS 350

LECTURE 1

MECHANICS

1. Kinematics

2. Dynamics

3. Energy

4. Momentum

5. Angular momentum

6. Oscillations

7. Waves

8. Relativity

9. Quantum mechanics

10. Statistical mechanics

11. Thermodynamics

12. Electromagnetism

13. Optics

14. Modern physics

15. Astrophysics

16. Cosmology

THE
Balmoral
Castle
Hotel.

MONTREAL.

**

AMERICAN PLAN:
 \$2 to \$4 per day.

EUROPEAN PLAN:
 \$1 to \$2.50 per day.

**

Special Rates to
 Excursion Parties.



Most centrally located.

Palatial in appointment.

Electric lighted and Steam-heated throughout.

++ **FINE CUISINE** under an Experienced **FRENCH CHEF.** ++

Free Busses meet all trains and boats.

Electric Cars, to all parts of the city, pass our hotel.

The Conduit system of electric light—the safest in the world against fire.

Narcisse Lord,

TELEPHONE:
 BELL 148.

(Successeur de LANGELIER & DECHILLES)

✻
 Marchand en Gros et
 Importateur de

Vins,
 Liqueurs,
 Cigares,
 &c.

Broches en acier de différentes longueurs pour le pressage du foin, ainsi que des cercles en frêne de première classe.

Agent pour la compagnie MINER CARRIAGE Co., Granby, — voitures d'hiver et d'été.

Assortiment considérable de harnais fins.

Agent pour la compagnie MASSY-HARRIS Co., grand assortiment de machines et instruments aratoires.

Hotel National

Table et Chambres

de Première Classe.

COIN DE LA RUE JACQUES-CARTIER.

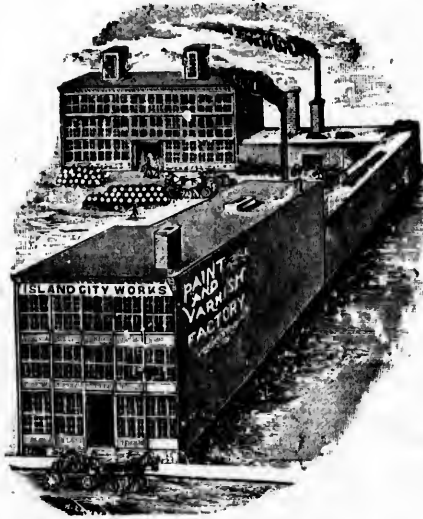
Telephone, Bell 127.

Place du Marche, St. Jean.

P. D. DODS & CO.,

MONTREAL.

Warehouse and Offices: 188-190 MCGILL STREET.



The ISLAND CITY
Prepared House Paints
are the Best and Cheap-
est. ❁ ❁ ❁

The ISLAND CITY
Floor Paint Dries in
Eight Hours. ❁ ❁



FACTORY: 274, 276, 278 ST. PATRICK STREET.

For Your Discounts and Deposits

—GO TO THE—

..National Bank..

CAPITAL PAID, \$1,200,000.

SURPLUS, PAID, \$300,000.

P. G. CARREAU,

MANAGER ST JOHN'S BRANCH.

