

**CIHM  
Microfiche  
Series  
(Monographs)**

**ICMH  
Collection de  
microfiches  
(monographies)**



**Canadian Institute for Historical Microreproductions / Institut canadien de microreproductions historiques**

**© 1994**

Technical and Bibliographic Notes / Notes techniques et bibliographiques

The Institute has attempted to obtain the best original copy available for filming. Features of this copy which may be bibliographically unique, which may alter any of the images in the reproduction, or which may significantly change the usual method of filming, are checked below.

L'Institut a microfilmé le meilleur exemplaire qu'il lui a été possible de se procurer. Les détails de cet exemplaire qui sont peut-être uniques du point de vue bibliographique, qui peuvent modifier une image reproduite, ou qui peuvent exiger une modification dans la méthode normale de filmage sont indiqués ci-dessous.

Coloured covers/  
Couverture de couleur

Coloured pages/  
Pages de couleur

Covers damaged/  
Couverture endommagée

Pages damaged/  
Pages endommagées

Covers restored and/or laminated/  
Couverture restaurée et/ou pelliculée

Pages restored and/or laminated/  
Pages restaurées et/ou pelliculées

Cover title missing/  
Le titre de couverture manque

Pages discoloured, stained or foxed/  
Pages décolorées, tachetées ou piquées

Coloured maps/  
Cartes géographiques en couleur

Pages detached/  
Pages détachées

Coloured ink (i.e. other than blue or black)/  
Encre de couleur (i.e. autre que bleue ou noire)

Showthrough/  
Transparence

Coloured plates and/or illustrations/  
Planches et/ou illustrations en couleur

Quality of print varies/  
Qualité inégale de l'impression

Bound with other material/  
Relié avec d'autres documents

Continuous pagination/  
Pagination continue

Tight binding may cause shadows or distortion  
along interior margin/  
La reliure serrée peut causer de l'ombre ou de la  
distorsion le long de la marge intérieure

Includes index(es)/  
Comprend un (des) index

Title on header taken from: /  
Le titre de l'en-tête provient:

Blank leaves added during restoration may appear  
within the text. Whenever possible, these have  
been omitted from filming/  
Il se peut que certaines pages blanches ajoutées  
lors d'une restauration apparaissent dans le texte,  
mais, lorsque cela était possible, ces pages n'ont  
pas été filmées.

Title page of issue/  
Page de titre de la livraison

Caption of issue/  
Titre de départ de la livraison

Masthead/  
Générique (périodiques) de la livraison

Additional comments: /  
Commentaires supplémentaires:

This item is filmed at the reduction ratio checked below/  
Ce document est filmé au taux de réduction indiqué ci-dessous.

10x	14x	18x	22x	26x	30x
<input type="checkbox"/>	<input type="checkbox"/>	<input checked="" type="checkbox"/>	<input type="checkbox"/>	<input type="checkbox"/>	<input type="checkbox"/>
12x	16x	20x	24x	28x	32x

The copy filmed here has been reproduced thanks to the generosity of:

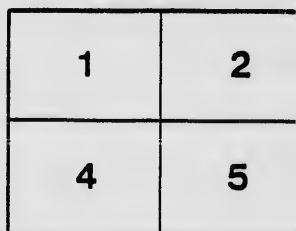
Harold Campbell Vaughan Memorial Library  
Acadia University.

The images appearing here are the best quality possible considering the condition and legibility of the original copy and in keeping with the filming contract specifications.

Original copies in printed paper covers are filmed beginning with the front cover and ending on the last page with a printed or illustrated impression, or the back cover when appropriate. All other original copies are filmed beginning on the first page with a printed or illustrated impression, and ending on the last page with a printed or illustrated impression.

The last recorded frame on each microfiche shall contain the symbol  $\rightarrow$  (meaning "CONTINUED"), or the symbol  $\nabla$  (meaning "END"), whichever applies.

Maps, plates, charts, etc., may be filmed at different reduction ratios. Those too large to be entirely included in one exposure are filmed beginning in the upper left hand corner, left to right and top to bottom, as many frames as required. The following diagrams illustrate the method:



reproduced thanks

Memorial Library

the best quality  
and legibility  
with the

covers are filmed  
and ending on  
illustrated impres-  
sions. All  
beginning on the  
illustrated impres-  
sions with a printed

microfiche  
meaning "CON-  
tinuing "END").

is filmed at  
too large to be  
are filmed  
corner, left to  
frames as  
illustrate the

L'exemplaire filmé fut reproduit grâce à la  
générosité de:

Harold Campbell Vaughan Memorial Library  
Acadia University.

Les images suivantes ont été reproduites avec le  
plus grand soin, compte tenu de la condition et  
de la netteté de l'exemplaire filmé, et en  
conformité avec les conditions du contrat de  
filmage.

Les exemplaires originaux dont la couverture en  
papier est imprimée sont filmés en commençant  
par le premier plat et en terminant soit par la  
dernière page qui comporte une empreinte  
d'impression ou d'illustration, soit par le second  
plat, selon le cas. Tous les autres exemplaires  
originaux sont filmés en commençant par la  
première page qui comporte une empreinte  
d'impression ou d'illustration et en terminant par  
la dernière page qui comporte une telle  
empreinte.

Un des symboles suivants apparaîtra sur la  
dernière image de chaque microfiche, selon le  
cas: le symbole  $\rightarrow$  signifie "A SUIVRE", le  
symbole  $\nabla$  signifie "FIN".

Les cartes, planches, tableaux, etc., peuvent être  
filmés à des taux de réduction différents.  
Lorsque le document est trop grand pour être  
reproduit en un seul cliché, il est filmé à partir  
de l'angle supérieur gauche, de gauche à droite,  
et de haut en bas, en prenant le nombre  
d'images nécessaire. Les diagrammes suivants  
illustrent la méthode.

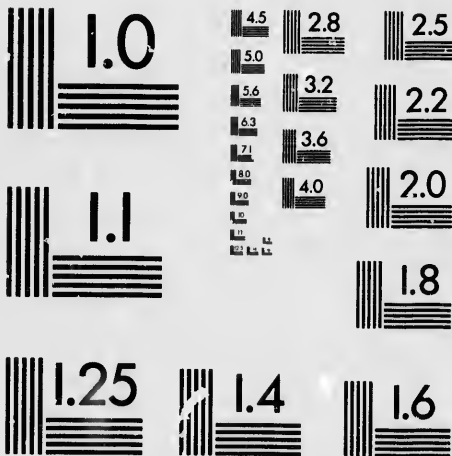
2	3
---	---

1
2
3

1	2	3
4	5	6

# MICROCOPY RESOLUTION TEST CHART

(ANSI and ISO TEST CHART No. 2)



**APPLIED IMAGE, Inc.**

1653 East Main Street  
Rochester, New York 14609 USA  
(716) 482-0300 - Phone  
(716) 288-5989 - Fax

# AGAIN ENLARGED.

As we have in the past devoted our energies to bring

## *The Montreal Gazette*

To it  
our e  
the a  
again  
ing r

Lar

A  
GAZ  
tere:  
hun  
Sciel  
tion,  
colle  
magi  
uabl  
tice  
Hist  
telli  
matt  
ral P

St  
Se:

FROM THE LIBRARY OF  
REV. J. M. CRAMP, D. D.  
PRESENTED BY HIS CHILDREN.  
JULY 1900.

it will be  
pinion and  
d we have  
ms of read-

E

*e World.*

WEEKLY  
ount of in-  
JECTS of  
of books on  
ry, Educa-  
What a fine  
American  
What val-  
inary Prac-  
ntemporary  
sionary In-  
ot least, of  
and Gene.

R.

Free.

"The Gazette,"  
MONTREAL.

ED.  
ring  
tte  
will be  
ion and  
we have  
of read-  
World.  
EKL  
t of in-  
CTS of  
ooks on  
Educa-  
t a fine  
merican  
hat val-  
y Prac-  
porary  
ary In-  
east, of  
Gene.  
ree.  
AL.

# THE GAZETTEER

- WITH -

INDEXED MAP

OF

*A*  
*Fig*  
**ONTARIO**

RAND, McNALLY & CO.'S SERIES,

SHOWING THE

RAILROADS,

And the Express Company doing business over each.

ALSO,

Counties, Islands, Lakes & Rivers,

TOGETHER WITH EVERY

*Post Office, Railroad Station or Town,  
carefully indexed, referring to the  
exact location where each may  
be found on the Map*

MONTREAL.

THE GAZETTE PRINTING HOUSE.

ACADIA COLLEGE LIBRARY,  
WOLFVILLE, N.S.

## Explanation of Abbreviations.

m—Miles.

N—North.

S—South.

E—East.

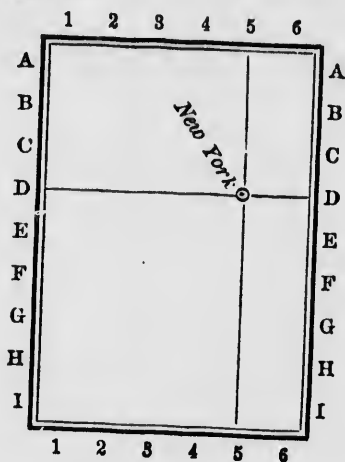
W—West.

Towns marked thus \* are recently established Post Offices, location not definitely known

The figures before names of towns denote population, either census of 1870, or estimated.

The letters and figures following names, refer to that point on the map at which lines drawn from marginal figures top and bottom, and letters upon either side of map, would cross each other at right angles

For example, to find "New York City D 5," let the diagram below represent the map New York is seen near the crossing of lines D—D and 5—5.



## AGENTS

For the sale of Gazetteers of Ontario, Quebec and the Maritime Provinces, wanted in every Town in the Dominion.

For particulars address

**T & R. WHITE,**

"The Gazette."

MONTREAL.

Copyright 1877, by RAND, McNALLY & Co.

256A

A  
F1056.5  
R3



# ONTARIO RAILROADS.

## Brantford, Norfolk & Port Burwell.

In course of construction from Brantford (U 11) to Port Burwell (W 9).

## Brockville & Ottawa.

(See Canada Central and Brockville & Ottawa.)

## Canada Central and Brockville & Ottawa.

Brockville (P 28) to Pembroke (J 23). Canadian Express  
Carleton Place (M 27) to Ottawa (L 29).  
Smiths Falls (N 27) to Perth (N 26).

## Canada Southern.

Fort Erie (W 16) to Amherstburgh (X 1). American Express.  
St. Thomas (M 33) to Moore (U 3).  
Fort Erie (W 16) to Niagara (U 15).

## Cobourg, Peterboro' & Marmora.

Cobourg (R 19) to Chambliss (O 19). Canadian Express.

## Credit Valley.

In course of construction from Toronto (S 15) to St. Thomas (V 8).

Junction (S 14) to Orangeville (Q 13).  
Church Falls (Q 12) to Elora (R 11).

## Grand Trunk.

Detroit, Mich., (W 1) to Portland, Me., leaving  
this Province near Bainsville (M 33) ..... Canadian Exp.  
St. Mary's (T 8) to London (U 8)..... Canadian Exp.  
Fort Erie (W 16) to Goderich (Q 7)..... American Exp.  
Berlin (S 11) to Galt (T 11) ..... Canadian Exp.  
Caughnawaga, Quebec, (L 35) to Mooers, N. Y.  
(N 35)..... National Exp.  
St. Lambert, Quebec (L 36) to Rouse's Point, N. Y. National Exp.  
Richmond, Quebec, to Riviere du Loup, Quebec. Canadian Exp.  
Arthabaska, Quebec, to Three Rivers, Quebec. Canadian Exp.

## Great Western Railway of Canada.

Windsor (W 1) to Fort Erie (W 16). American Express.  
Sarnia (T 4) to Clifton (U 15).  
Clifton (U 15) to Allenburgh (V 15).  
Hamilton (T 13) to Toronto (S 15).  
Brantford (U 11) to Southampton (N 9).  
Palmerston (Q 10) to Kincardine (O 7).  
London (U 8) to Port Stanley (W 8).  
Komoka (U 7) to Glencoe Junction (V 6).  
London (U 8) to Wingham (P 8).  
Wyoming (U 5) to Petrolia (U 5).

## RAILROADS—continued.

- Hamilton & Northwestern.** Canadian Express.  
Formerly Hamilton & Lake Erie.  
Jarvis (V 12) to Hamilton (T 13) and Georgetown (R 13).
- Kingston & Pembroke.**  
In course of construction from Kingston (Q 25) to Pembroke (I 24).
- London, Huron & Bruce.** American Express.  
London (U 8) to Wingham (P 8).  
(See Great Western Railway of Canada.)
- London & Port Stanley.**  
London (U 8) to Port Stanley (W 8).  
(See Great Western Railway of Canada.)
- Midland Railway of Canada.** Canadian Express.  
Port Hope (R 19) to Midland (M 14).  
Mill Brook (Q 18) to Lakefield (O 19).
- Northern Railway of Canada.** Vicker & Co.'s Northern Express.  
Toronto (S 15) to Meaford (N 11).  
Lefroy (P 15) to Bell Ewart (O 15).  
Allandale (O 14) to Gravenhurst (L 47).
- Port Dover & Lake Huron.** Canadian Express.  
Stratford (S 9) to Port Dover (V 11).
- Port Whitby & Port Perry.**  
(See Whitby & Port Perry Extension.)
- St. Lawrence & Ottawa.** Canadian Express.  
Ottawa (L 29) to Prescott (O 29).
- Toronto, Grey & Bruce.** J. J. Vicker's Exp.  
Toronto (S 15) to Owen Sound (N 29).  
Orangeville (Q 13) to Teeswater (P 8).
- Toronto & Nipissing.** Canadian Express.  
Toronto (S 15) to Coboconk (N 18).
- Victoria.**  
Lindsay (P 17) to Haliburton (L 19).
- Welland Railway.** Canadian Express.  
Port Colborne (V 15) to Port Dalhousie (U 15).
- Wellington, Grey & Bruce.** American Express.  
Guelph (S 12) to Southampton (N 9).  
Palmerston (Q 10) to Kincardine (O 11).  
(See Great Western Railway of Canada.)
- Whitby, Port Perry & Lindsay.** Canadian Express.  
Port Whitby (R 17) to Lindsay (P 17).

Ad  
Alg  
An  
Bra  
Bru  
Car  
Dur  
Dur  
Elg  
Eas  
Fro  
Gle  
Gre  
Gre  
Hal  
Hal  
Hae  
Hun  
Ken  
Lan  
Lan  
Lee  
Len  
Lin  
Mid  
Mus  
Nip  
Nor  
Nor  
Ont  
Oxf  
Pee  
Per  
Pet  
Pre  
Pri  
Ren  
Rus  
Sim  
Sto  
Vic  
Wat  
We  
We  
Yor

Air  
Am  
Am  
Am  
Bar  
Bar  
Bat  
Bea  
Bec  
Bed  
Big  
Big  
Bol

## COUNTIES.

Addington	M	23
Algoma	D	11
And.	D	30
Brant	U	11
Bruce	O	9
Carleton	L	28
Dundas	M	80
Durham	Q	18
Elgin	V	7
Essex	X	2
Frontenac	N	24
Glengarry	M	32
Grenville	N	28
Grey	O	10
Haldimand	V	13
Halton	S	13
Hastings	N	22
Huron	O	8
Kent	W	4
Lambton	U	4
Lanark	M	26
Leeds	O	27
Lennox	Q	24
Lincoln	U	14
Middlesex	U	7
Muskoka	H	15
Nipissing District	H	20
Norfolk	V	10
Northumberland	Q	20
Ontario	P	16
Oxford	T	10
Peel	R	13
Perth	R	9
Peterborough	L	19
Prescott	K	32
Prince Edward	R	22
Renfrew	J	23
Russell	L	30
Simcoe	O	14
Stormont	M	81
Victoria	N	17
Waterloo	S	10
Welland	V	14
Wellington	Q	11
Wentworth	T	12
York	R	15

## ISLANDS.

Aird	E	6
Amadros	F	7
Amherst	R	24
Annaretta	G	9
Barrie	F	5
Barrier	K	10
Batture	F	4
Bear's	J	9
Beckwith	M	13
Bedford	F	8
Big	Q	23
Bigby	D	3
Bois Blanc	X	1

## Islands—continued.

Bustard	G	11
Canise	O	16
Chantry	N	8
Christian	M	13
Clapperton	E	7
Cloche	F	8
Club	I	9
Cockburn	F	3
Copper	C	23
Cove	J	8
Crescent	F	4
Darch	F	6
Duck	R	25
East Sister	Z	1
Egg	R	21
Fitzwilliam	I	8
Flower Pot	J	8
Fox	G	10
Garden	Q	25
George	G	9
George	I	8
Ghegheto	L	9
Giant's Tom	L	13
Grand	E	3
Grand Manitoulin	G	6
Graves	O	15
Great Duck	G	4
Green	F	3
Griffith's	L	10
Half Moon	I	9
Hay	L	10
Hen and Chickens	Z	1
Henry	F	4
Heywood	G	8
Hope	L	13
Horse Shoe	Q	25
Howe	Q	25
Inner Drake	R	24
Inner Duck	G	4
Innes	F	6
Iron	F	15
James	I	8
John	E	5
Leech	E	30
Lizard	F	30
Lightning	X	1
Lonely	I	9
Long Point	W	11
Loon	G	8
Lucas	I	8
Lyal	L	9
Manitou	H	36
Maple	G	50
Michtpicoten	E	29
Middle	Z	2
Middle Duck	G	4
Middle Sister	Y	1
Mississauga	E	4
Mohawk	W	13
Montreal	F	30
Navy	V	16
Nichols	R	21
North East Shingle	H	10
Nut	R	24

## Islands—continued.

Otter.....	D	29
Outer Drake.....	R	24
Outer Duck.....	H	4
Papoose.....	G	10
Parisienne.....	G	30
Parry.....	K	13
Phillip Edward.....	G	10
Pic.....	D	28
Pie.....	D	26
Pigeon.....	R	25
Point Pelee.....	Z	2
Rabbit.....	H	9
Rolls.....	F	7
Rush.....	W	11
Sand.....	G	30
Simcoe.....	Q	25
Simpson.....	C	27
Snake.....	O	15
Snake.....	J	8
Spur.....	D	26
Squaw.....	G	9
State.....	D	28
St. Anne.....	V	3
St. Ignace.....	C	27
St. Joseph.....	D	1
Strawberry.....	F	8
Sulphur.....	D	2
The Indian.....	J	12
The Limestone.....	J	12
Thompsons.....	D	26
Thousand.....	Q	25
Turkey.....	X	1
Victoria.....	D	25
Vidal.....	F	4
Wall.....	H	9
Walpole.....	V	3
Wateber.....	L	13
Western Duck.....	G	4
White Cloud.....	L	10
White Spruce.....	N	12
William.....	G	9
Wolfe.....	Q	25
Woopoose.....	R	23
Yorkshire.....	R	25

## LAKES.

Ahmte.....	I	15
Arrow.....	D	25
Aregignomeh.....	E	31
Ayagusbick.....	N	24
Bald.....	O	19
Balsam.....	N	17
Bark.....	L	23
Bark.....	K	21
Bass.....	M	18
Bass.....	N	19
Bass.....	O	24
Bass.....	O	23
Bass.....	N	15
Beaver.....	P	24
Beech.....	L	18
Belmont.....	O	21

## Lakes—continued.

Benjamin.....	N	22
Bennett's.....	N	25
Big Clear.....	O	24
Birch.....	P	25
Black.....	O	26
Black Sturgeon.....	B	26
Boat.....	M	9
Bob's.....	O	25
Boshkung.....	L	18
Britchless.....	K	23
Buck.....	L	20
Bull.....	O	24
Calabogie.....	L	25
Cameron's.....	O	18
Cat.....	C	28
Catfish.....	H	19
Caykaguanbacong.....	L	18
Cedar.....	H	19
Cedar.....	O	20
Charleston.....	P	27
Charlotte.....	K	23
Chamberlains.....	L	25
Chemong.....	O	19
Chippege.....	O	24
Christie's.....	N	26
Clear.....	K	23
Clear.....	L	22
Clear.....	O	20
Clyde.....	L	25
Cockburn.....	O	25
Colton's.....	K	25
Constant.....	K	24
Corry's.....	H	23
Crab.....	N	20
Cranberry.....	O	23
Cross.....	N	24
Crown.....	N	25
Crystal.....	M	22
Davis.....	N	18
Deer.....	N	20
Deabaras.....	C	1
Desert.....	G	31
Devil.....	O	25
Diamond.....	K	22
Doe.....	J	16
Doe.....	O	24
Dog.....	C	26
Dore.....	J	24
Drowned.....	N	28
Duck.....	N	23
DuTalon.....	F	17
Eagle.....	O	25
Eagle.....	N	20
East.....	O	28
Echo.....	G	31
Echo.....	L	21
Eel.....	M	20
Elbow.....	O	25
Erie.....	X	11
Esnogaming.....	D	31
Fairy.....	K	17
Fifth.....	O	24
Fortune.....	M	24
Four Mile.....	N	18

Four.....		
Georg.....		
Georg.....		
Georg.....		
Goide.....		
Goose.....		
Goose.....		
Gorin.....		
Graha.....		
Great.....		
Green.....		
Green.....		
Gull.....		
Gull.....		
Hall's.....		
Harro.....		
Head.....		
Heart.....		
Henne.....		
Hog.....		
Honds.....		
Horse.....		
Hungr.....		
Huron.....		
Indian.....		
Indian.....		
Indian.....		
Island.....		
Island.....		
Joes.....		
Joseph.....		
Kamin.....		
Kashag.....		
King.....		
Knowl.....		
Koskou.....		
Lac des.....		
L'Amat.....		
La Tort.....		
Lily.....		
Little.....		
Little.....		
Little B.....		
Little C.....		
Leon.....		
Long.....		
Long.....		
Long.....		
Loon.....		
Lorwall.....		
Loughb.....		
Lower M.....		
Malcom.....		
Manitou.....		
Maple.....		
Marmor.....		
Mary's.....		
Maserlon.....		
McDoug.....		
McKaski.....		
McKay's.....		
McKay's.....		
Mill.....		

-continued.

N 22  
 NN 25  
 OP 24  
 P 25  
 O 26  
 B 26  
 M 9  
 O 25  
 L 18  
 K 23  
 L 20  
 O 24  
 L 25  
 O 18  
 C 28  
 H 19  
 L 18  
 L 19  
 O 20  
 P 27  
 K 23  
 L 25  
 O 19  
 N 24  
 O 24  
 K 23  
 L 22  
 O 20  
 L 25  
 O 25  
 K 25  
 K 24  
 H 23  
 N 20  
 O 23  
 N 24  
 K 25  
 K 22  
 M 18  
 N 20  
 C 1  
 G 31  
 O 25  
 K 22  
 J 16  
 O 26  
 C 24  
 J 24  
 N 28  
 N 23  
 F 17  
 O 25  
 N 20  
 O 28  
 G 81  
 L 21  
 M 20  
 O 25  
 X 11  
 D 81  
 K 17  
 O 24  
 M 24  
 N 18

Lakes-continued.

Fourth ..... O 25  
 George ..... C 1  
 George ..... G 31  
 George ..... K 31  
 Golden ..... J 23  
 Goose ..... O 24  
 Goose ..... P 23  
 Gorman ..... K 23  
 Graham ..... O 27  
 Great Opeongo ..... I 20  
 Green ..... J 23  
 Green ..... B 7  
 Gull ..... N 24  
 Gull ..... M 18  
 Hall's ..... L 18  
 Harrowood ..... K 23  
 Head ..... N 17  
 Heart ..... P 26  
 Hennesy ..... N 22  
 Hog ..... P 22  
 Honds ..... K 25  
 Horse Shoe ..... M 18  
 Hungry ..... N 24  
 Huron ..... M 5  
 Indian ..... K 23  
 Indian ..... M 24  
 Indian ..... O 26  
 Island ..... I 19  
 Island ..... M 23  
 Joes ..... M 25  
 Joseph ..... K 14  
 Kaminsky ..... K 22  
 Kashagavagamog ..... M 19  
 King ..... M 23  
 Knowlton ..... P 25  
 Koskouakamak ..... N 24  
 Lac des Isles ..... B 26  
 L'Amable ..... M 21  
 La Tortue ..... F 17  
 Lily ..... L 22  
 Little ..... M 11  
 Little ..... O 14  
 Little ..... N 14  
 Little Boshkung ..... L 18  
 Little Opeongo ..... J 21  
 Leon ..... K 21  
 Long ..... O 23  
 Long ..... O 24  
 Long ..... B 28  
 Loon ..... N 23  
 Lorwall ..... K 23  
 Loughborough ..... P 25  
 Lower Mud ..... N 17  
 Malcom's ..... M 24  
 Manitou ..... G 7  
 Maple ..... L 18  
 Marmora ..... O 21  
 Mary's ..... K 16  
 Maserlonge ..... H 23  
 McDougall's ..... J 20  
 McKaskill's ..... I 21  
 McKay's ..... M 26  
 McKays ..... B 29  
 Mill ..... J 14

Lakes-continued.

Millers Lake ..... K 25  
 Mindemoya ..... G 7  
 Mink ..... J 24  
 Mississippi ..... M 27  
 Moore's ..... N 17  
 Moose ..... L 19  
 Mountain ..... M 28  
 Mountain ..... C 23  
 Mud ..... J 23  
 Mud ..... L 24  
 Mud ..... P 24  
 Mud ..... E 11  
 Mud ..... P 16  
 Mud ..... N 14  
 Muskoka ..... L 15  
 Musquito ..... M 24  
 Nasbansing ..... G 17  
 Negwaso ..... D 30  
 Nipigon ..... B 27  
 Nipissing ..... F 15  
 Norway ..... L 25  
 Norway ..... O 24  
 Ontario ..... S 19  
 Otty ..... N 26  
 Otter ..... N 27  
 Otter ..... M 23  
 Otter Slide ..... I 19  
 Owl ..... C 28  
 Ox Tongue ..... K 18  
 Paluke ..... D 30  
 Pakowagamingue ..... D 3  
 Papineau ..... K 21  
 Partridge ..... N 23  
 Penace ..... F 10  
 Peninsula ..... K 17  
 Pigeon ..... O 19  
 Portage ..... E 11  
 Printy ..... K 22  
 Purde ..... O 24  
 Ragawouk ..... G 7  
 Rat ..... E 10  
 Red Pine ..... H 19  
 Rice ..... Q 19  
 Rideau ..... Q 26  
 Robinson ..... M 25  
 Rock ..... M 23  
 Rock ..... G 31  
 Rosseau ..... K 15  
 Round ..... J 22  
 Round ..... O 20  
 Round ..... E 11  
 Sand ..... O 26  
 Sandy ..... O 19  
 Salmon ..... M 22  
 Salmon Trout ..... O 20  
 Schooner ..... M 24  
 Second ..... O 26  
 Sesebe ..... I 16  
 Shahbomekah ..... N 24  
 Shallow ..... L 18  
 Sharbot ..... N 25  
 Silver ..... K 23  
 Small ..... G 12  
 Simcoe ..... O 15

## Lakes—continued.

Six Mile.....	L	15
Skeleton.....	K	16
Sorers.....	M	19
South.....	M	18
Sparrow.....	M	16
Spring.....	L	22
St. Clair.....	W	2
St. Peter.....	K	10
Steel.....	C	29
Stoco.....	P	23
Stone's.....	L	25
Stony.....	O	20
Sturgeon.....	H	23
Sturgeon's.....	O	18
Sugar.....	P	22
Sydenham.....	P	25
Tamagamingue.....	B	14
Third.....	O	26
Third.....	O	25
Trading.....	K	17
Traverse.....	H	21
Trout.....	H	20
Trout.....	J	14
Trout.....	L	22
Trout.....	M	25
Trout.....	N	19
Trout.....	C	28
Twelve Mile.....	L	18
Vermillion.....	D	10
Vernon.....	K	16
Victoria.....	J	21
Wabatong.....	D	31
Wauckobing.....	D	3
Wauhapitaering.....	C	12
Wawa.....	E	30
Wawanosh.....	T	4
Wellers.....	R	21
Weslemkoon.....	M	22
West.....	R	22
White.....	C	30
White.....	L	26
White.....	L	23
White.....	N	20
White.....	O	25
White Fish.....	E	10
White Fish.....	D	25
White Trout.....	I	19
White Water.....	D	11
Wolf.....	N	20
Wolsey.....	G	6
Young's.....	R	21

## RIVERS.

Agawa.....	F	31
Arrow.....	D	25
Ausable.....	T	6
Aux Pucos.....	W	2
Batchewang.....	F	31
Bayfield.....	R	7
Beaudette.....	M	32
Beaver.....	M	16
Beaver.....	N	11

## Rivers—continued.

Belle.....	W	2
Big Cr.....	V	10
Bighead.....	N	11
Black.....	D	29
Black.....	M	17
Black Sturgeon.....	C	26
Blind.....	E	4
Bonnechere.....	K	24
Burnt.....	N	18
Canning.....	T	10
Castor.....	L	30
Chippewa.....	F	31
Clyde.....	M	25
DeLisle.....	M	32
Dochart's.....	K	26
Dog.....	C	25
Dog.....	D	30
Dore.....	E	30
Dusky Cr.....	V	12
East Branch.....	E	9
French.....	G	13
Garden.....	G	31
Goulais.....	G	31
Grand.....	R	11
Grand.....	V	13
Gravel.....	E	30
Gull.....	M	18
Gull.....	B	26
Indian.....	L	26
Jack.....	M	28
Jack Fish.....	B	27
Jordan.....	O	21
La Grasse.....	L	33
La Petite Nation.....	L	30
Little Bear.....	E	30
Little Castor.....	L	30
Little Pic.....	C	23
Mad.....	O	19
Madawaska.....	L	25
Maganetawan.....	H	18
Magpie.....	E	30
Maitland.....	Q	7
Michipicoten.....	E	31
Mississippi.....	L	27
Mississauga.....	D	4
Moira.....	O	21
Montreal.....	F	31
Montreal.....	E	35
Musanoga.....	M	23
Muskoka.....	L	15
Naiscoutang.....	I	12
Namanitigong.....	G	16
Nine Mile.....	P	7
Nipigon.....	C	27
Nottawasa.....	Q	13
Ottawa.....	D	17
Payne.....	M	31
Pays Plat.....	C	23
Petawawa.....	H	21
Pic.....	C	29
Pine.....	P	13
Pretty.....	O	12
Pucasquaw.....	D	29
Rideau.....	N	27

Ridea  
Rook  
Sable  
Salmo  
Sand.  
Sauge  
Scul  
Segen  
Serpe  
Sever  
Shaw  
Spania  
Squaw  
Speed  
St. Cl  
St. Ma  
Steel.  
Syden  
Tham  
Thess  
Trent  
Vermt  
Wabis  
White  
White  
York.

Pop.  
100.  
25  
150.  
250.  
75.  
100.  
700.  
70.  
145.  
160.  
150.  
25.  
50.  
150.  
50.  
750.  
25.  
150.  
25.  
95.  
1000.  
100.  
150.  
150.  
200.

—continued.

W	2
V	10
N	11
D	29
M	17
C	26
E	4
K	24
N	18
T	10
L	30
F	31
M	25
M	32
K	26
C	25
D	80
E	30
V	12
E	9
G	13
G	31
G	11
R	11
V	13
E	30
M	18
B	26
L	26
M	28
B	27
O	21
L	33
L	30
E	30
L	30
C	29
O	13
L	25
H	13
E	30
Q	7
E	31
L	27
D	4
O	21
F	31
E	35
M	23
L	15
I	12
G	16
P	7
Q	27
C	13
D	17
M	31
C	23
C	21
C	29
P	13
O	12
D	29
N	27

Rivers—continued.

Rideau	D	29
Rook Saugeen	O	10
Sable	D	7
Salmon	P	23
Sand	E	30
Saugeen	N	9
Scoulayeutto	O	23
Segeme	J	14
Serpent	D	6
Severn	M	15
Shawanaga	I	13
Spanish	E	8
Squaw	O	19
Speed	S	12
St. Clair	U	3
St. Mary	D	1
Steel	C	28
Sydenham	V	4
Thames	S	8
Thessalon	D	2
Trent	Q	21
Vermillion	D	10
Wabiska	D	30
White	D	29
White Fish	F	9
York	L	21

TOWNS.

Pop.			
100.	Aberarder	T	5
25	Aberdour, 5 m N		
	Paisley	O	8
150.	Aberfoyle	S	12
250.	Abingoun	U	13
75.	Aboyne, 1 m N E		
	Elora	N	11
100.	Acacia	V	10
700.	Acton	R	12
70.	Adam	N	30
	Adams Corners,		
	chngd to Garden		
	Hill	Q	18
145.	Adare	T	7
160.	Addison	O	27
150.	Adelaide	U	6
25.	Adjuda, 4 m N E		
	Belfountain	R	13
50.	Admaston	K	25
150.	Adolphustown	R	23
50.	Agincourt	R	15
750.	Ailsa Craig	T	7
	Ainleysville, see		
	Brussels	Q	8
25.	Ainleysville Sta-		
	tion	Q	8
150.	Airlie	O	13
25.	Albert, 4 m E Read	Q	23
95.	Alberton	U	12
1000.	Albion	Q	14
100.	Albury	H	22
150.	Aldborough	W	6
150.	Aldershot	T	13
200.	Alderville	Q	20

Pop. Towns—continued.

800.	Alexandria	L	32
70.	Alfred	K	31
	Alfred Island, see		
	Alfred	K	31
100	Algonquin	O	28
300.	Allanburg	V	15
25.	Allanburg Junc-		
	tion	U	15
200.	Allandale	O	14
70.	Allan Park	O	10
40.	Allan's Mills	N	26
200	Allendale	P	20
158.	Allenford	M	9
25.	Allensville	K	16
25.	Allenwood	N	14
150.	Allisonville	R	22
250.	Alliston	P	14
50.	Alloa	R	13
150.	Alma	R	11
100.	Almira	Q	15
2080.	Almonte	L	27
100	Alport	L	16
25.	Alsfeldt	P	10
400.	Alton	Q	12
100.	Altona	Q	16
25.	Alton Station	Q	12
25.	Alvanley	N	10
25.	Alvinston	U	5
25.	Amaranth	Q	12
100.	Amberley	P	7
25.	Ambleside	P	9
201.	Ameliasburg	R	22
1936.	Amherstburgh	X	1
130.	Amlens	U	7
600	Ancaster	T	12
25.	Anderson	S	8
25	Anderson	X	1
	Andrewsburgh see		
	Escott	P	27
	Anglesea, see Cloyne	N	23
400.	Angus	O	14
25.	Annan	M	10
	Anstruther, see		
	Apsley	N	20
130.	Antrim	L	27
130.	Appin	V	6
150.	Appleby	T	13
	*Appledore, Kent Co.		
300.	Appleton	M	27
25.	Appleton Station	M	27
125.	Apsley	N	20
100.	Apto	N	14
100.	Arden	O	24
50	Ardoch	N	21
50.	Ardtrae	N	15
	Argyle, see Argyle		
	Station	O	17
100.	Argyle Station	O	17
100.	Arkell	S	12
500.	Arkona	T	6
150.	Arkwright	N	9
90.	Arlington	P	14
	Arnitage, see		
	Quay's Station	R	19

Pop. Towns—continued.

30.	Armadale	R	15
25.	Armow	O	8
200.	Armstrong's Corners	N	26
	Armstrong's Falls, see McKellar	J	14
25.	Armstrong's Mills, 7 m N Guelph	S	12
30.	Arnott	N	10
1714.	Arnprior	K	26
50.	Aros	N	17
850.	Arthur	Q	11
200.	Arva	U	7
150.	Ashburn	Q	16
1400.	Ashburnham	P	19
200.	Ashdown	K	15
50.	Ash Grove	S	13
25.	Ashley	N	10
250.	Ashley Station, see Ashley	N	10
250.	Ashton	M	27
25.	Ashton Station	M	27
25.	Ashworth	P	16
25.	Askin, 1 m S London	U	8
25.	Aspdn	K	16
25.	Asphodel	P	20
40.	Asselstines Mills, 2 1/2 m fr. Ernestown	Q	24
50.	Atha	K	16
25.	Athens	Q	16
400.	Atherly	N	16
80.	Atherton	V	10
100.	Athlone	Q	13
150.	Athol	L	31
25.	Attercliff	V	13
25.	Attercliff Station	V	13
200.	Auburn	S	13
100.	Auburn	Q	7
25.	Audley	R	16
50.	Aughrim	V	5
300.	Aultsville	N	30
1132.	Aurora	Q	15
200.	Avening	O	13
100.	Avon	U	8
25.	Avonbank	S	8
100.	Avonmore	M	31
25.	Avonton	S	8
25.	Asselotines Mills, 1 m N Ernestown	Q	24
1400.	Aylmer West	V	8
1900.	Ayr	T	11
150.	Ayton	P	10
50.	Baby's Point	V	8
25.	Baddow	N	18
500.	Baden	S	10
25.	Badjeros	O	12
75.	Bagot	L	25
25.	Bale du Dore	N	8
25.	Bailieborough	Q	19
25.	Bainsville	M	33
25.	Bairds	V	7
30.	Bala	L	15

Pop. Towns—continued.

25.	Balakava, 1 m S Shakespeare	S	9
100.	Balderson	N	26
	*Baldoon, Kent Co.		
100.	Baldwin	P	23
25.	Balentra	P	24
100.	Ballantrae	Q	15
180.	Ballantyne's	Q	26
150.	Ballinafad	R	12
25.	Ballsville	U	12
100.	Ballycroy	Q	13
100.	Ballyduff	Q	18
100.	Ballymote	U	8
	Balmero Island, chgd to Stewartville	K	26
25.	Balmora	R	15
50.	Balmoral	V	12
25.	Balmoral	S	11
25.	Balsam	Q	16
500.	Baltimore	R	19
150.	Bamberg	S	10
50.	Banda	O	13
75.	Bandon, 2 m N Seafort	R	8
100.	Bangor	R	16
	*Banks, Grey Co.		
100.	Bannockburn	O	22
25.	Baptiste Creek, sta. Gt W R'y, 5 m E Stony Point	X	3
25.	Bardsville	L	16
25.	Bark Lake	J	21
90.	Barnett	R	11
	Barrie, see Cloyne	N	23
3398.	Barrie	O	14
25.	Barrieheid	Q	25
100.	Bartonville	T	13
25.	Bascom River	W	2
50.	Batchewana	F	30
25.	Bates Corners	M	30
700.	Bath	Q	24
	Bathurst, see Glen Tay	N	26
120.	Batteaux	N	13
356.	Battersea	P	26
300.	Bayfield	R	7
350.	Bayham	V	9
25.	Baysville	L	17
27.	Bayview	M	11
200.	Beathburgh	J	25
750.	Beachville	U	9
100.	Bealton	U	11
1000.	Beamsville	U	14
25.	Beamsville Sta'n	U	14
100.	Bear Brook	L	30
25.	Beatrice	L	16
1100.	Beaverton	O	16
25.	Becher	V	4
25.	Beckwith	M	27
25.	Bedford	R	16
50.	Bed Rock	C	26
25.	Beggsborough, 35 m N Bracebridge	L	16

Pop.	25.	B
	140.	B
	175.	B
	100.	B
	50.	B
	75.	B
	25.	B
	25.	B
	25.	B
	7305.	B
	600.	B
	200.	B
	100.	B
	25.	B
	250.	B
	200.	B
	150.	B
	100.	B
	50.	B
	150.	B
	25.	B
	25.	B
	25.	B
	150.	B
	2743.	B
	100.	B
	25.	B
	100.	B
	80.	B
	300.	B
	25.	B
	80.	B
	25.	B
	25.	B
	25.	B
	25.	B
	25.	B
	100.	B
	100.	B
	50.	B
	60.	B
	25.	B
	75.	B
	80.	B
	175.	B
	150.	B
	25.	B
	25.	B
	150.	B
	150.	B
	150.	B
	25.	B
	25.	B
	100.	B
	350.	B
	25.	B
	25.	B
	550.	B
	250.	B
	400.	B
	100.	B



ns—continued.

1 m S  
 eare . . . . . S 9  
 kent Co. . . . . N 26  
 . . . . . P 23  
 . . . . . P 24  
 . . . . . Q 15  
 . . . . . Q 26  
 . . . . . R 12  
 . . . . . U 12  
 . . . . . Q 13  
 . . . . . U 18  
 . . . . . U 8  
 Island,  
 Stewart . . . . . K 26  
 . . . . . R 15  
 . . . . . V 12  
 . . . . . S 11  
 . . . . . Q 16  
 . . . . . R 19  
 . . . . . S 10  
 . . . . . O 13  
 N Sea-  
 . . . . . R 8  
 . . . . . R 16  
 Co. . . . . O 22  
 . . . . . 100  
 . . . . . X 3  
 . . . . . L 16  
 . . . . . J 21  
 . . . . . R 11  
 . . . . . N 23  
 . . . . . O 14  
 . . . . . Q 25  
 . . . . . T 13  
 . . . . . W 2  
 . . . . . F 30  
 . . . . . M 30  
 . . . . . Q 24  
 Glen  
 . . . . . N 26  
 . . . . . N 13  
 . . . . . P 26  
 . . . . . R 7  
 . . . . . V 9  
 . . . . . L 17  
 . . . . . M 11  
 . . . . . J 25  
 . . . . . U 9  
 . . . . . U 11  
 . . . . . U 14  
 . . . . . n. U 14  
 . . . . . L 30  
 . . . . . L 16  
 . . . . . O 16  
 . . . . . V 4  
 . . . . . M 27  
 . . . . . R 16  
 . . . . . C 26  
 35  
 gel 16

Pop. Towns—continued.

25. Beeton . . . . . Q 14  
 140. Belfast . . . . . P 7  
 175. Belford, 6 m S W  
 Markham . . . . . R 16  
 100. Belfountain . . . . . R 13  
 50. Belgrave . . . . . Q 8  
 75. Belhaven . . . . . P 15  
 25. Bellamy's . . . . . O 28  
 25. Bellamy's Mills . . . . . M 26  
 25. Belle River . . . . . X 2  
 7505. Belleville . . . . . Q 22  
 600. Bell Ewart . . . . . O 15  
 200. Bellrock . . . . . P 24  
 100. Bell's Corners . . . . . L 28  
 25. Bell's Station . . . . . O 28  
 250. Belmont . . . . . U 8  
 200. Belmore . . . . . P 9  
 150. Benmiller . . . . . Q 7  
 100. Bennie's Corners . . . . . L 26  
 50. Bennington . . . . . T 8  
 150. Bensfort . . . . . Q 19  
 25. Bentley . . . . . X 5  
 25. Bentonville . . . . . M 31  
 25. Bentonville . . . . . U 12  
 150. Berkeley . . . . . O 11  
 2743. Berlin . . . . . S 11  
 100. Berne . . . . . R 7  
 25. Bertie Road . . . . . W 15  
 100. Bervie . . . . . O 8  
 80. Berwick . . . . . M 30  
 300. Bethany . . . . . Q 18  
 25. Bethesda . . . . . Q 15  
 80. Bewdley . . . . . Q 19  
 25. Bexley . . . . . N 17  
 25. Big Bay, 3 m S  
 North Keppel . . . . . M 10  
 25. Big Bluff . . . . . R 23  
 100. Billing's Bridge . . . . . L 28  
 100. Binbrook . . . . . U 13  
 50. Bingham Roads . . . . . V 13  
 60. Birkhall . . . . . U 4  
 25. Birman . . . . . T 5  
 75. Birmingham . . . . . P 26  
 80. Birr . . . . . T 8  
 175. Bishop's Gate, 2 m  
 fr. Burford . . . . . U 11  
 150. Bishop's Mills . . . . . N 28  
 25. Bismarck . . . . . V 14  
 25. Bismark . . . . . W 6  
 150. Blackbank . . . . . O 13  
 \*Blackburn, Russell  
 Co.  
 150. Black Creek . . . . . V 15  
 25. Blackheath . . . . . U 13  
 25. Blackwell . . . . . T 4  
 100. Blair . . . . . S 11  
 350. Blairton . . . . . O 21  
 25. Blakeney . . . . . L 26  
 25. Blandford . . . . . T 10  
 25. Blantyre . . . . . N 11  
 550. Bienheim . . . . . T 10  
 250. Blessington . . . . . Q 22  
 400. Bloomfield . . . . . R 22  
 100. Bloomingdale . . . . . S 11

Pop. Towns—continued.

175. Bloomington . . . . . Q 15  
 100. Bloomsburg . . . . . V 11  
 300. Bluevale . . . . . Q 8  
 700. Blyth . . . . . Q 8  
 50. Blytheswood . . . . . X 2  
 1000. Bobcaygeon . . . . . O 18  
 100. Bogart . . . . . O 23  
 25. Boligton . . . . . P 14  
 25. Bollingbroke . . . . . N 25  
 300. Bolsover . . . . . O 16  
 1000. Bolton . . . . . Q 14  
 Bolton's Corners,  
 see Edwards-  
 burgh . . . . . O 29  
 500. Bondhead . . . . . Q 14  
 275. Bongard's Corners . . . . . L 23  
 80. Bookton . . . . . U 10  
 Borella, see Port  
 Perry . . . . . Q 17  
 100. Bornholm . . . . . R 8  
 25. Bornish . . . . . T 6  
 Bosanquet, see Ra-  
 venswood . . . . . T 5  
 500. Boston . . . . . R 13  
 25. Boston . . . . . U 11  
 150. Bosworth . . . . . Q 11  
 25. Botany . . . . . W 5  
 1500. Bothwell . . . . . V 5  
 25. Bouck's Hill . . . . . N 30  
 50. Boulter . . . . . L 22  
 25. Bowdley Landing,  
 4 m S W Gore's  
 Landing . . . . . Q 19  
 25. Bower . . . . . Q 23  
 30. Bowling Green . . . . . Q 12  
 40. Bowmanston . . . . . Q 20  
 3000. Bowmanville . . . . . R 17  
 Bowmore, see Dun-  
 troon . . . . . O 12  
 150. Bowwood, Middle-  
 sex Co.  
 150. Boxgrove . . . . . R 15  
 120. Boyne . . . . . S 13  
 200. Bracebridge . . . . . L 16  
 25. Brackenrigg, 4 m E  
 Port Carling . . . . . L 15  
 1500. Bradford . . . . . P 14  
 25. Bradshaw . . . . . V 4  
 25. Bradyville . . . . . K 31  
 100. Braemar . . . . . T 9  
 25. Braeside . . . . . K 26  
 50. Bramley . . . . . O 14  
 2900. Brampton . . . . . R 14  
 250. Branchton . . . . . T 12  
 25. Brandon . . . . . R 8  
 100. Brandy Creek . . . . . V 11  
 8107. Brantford . . . . . U 11  
 25. Breadalbane, 2 m  
 N E Lochiel . . . . . L 32  
 100. Brechin . . . . . O 16  
 25. Brecon . . . . . T 7  
 200. Brentwood . . . . . O 13  
 200. Breslau . . . . . S 11  
 150. Brewer's Mills . . . . . P 26

Pop.	Towns—continued
100.	Brewster..... S 6
25.	Bridgden..... U 4
25.	Bridge End..... M 33
150.	Bridgenorth..... P 19
700.	Bridgeport..... S 11
25.	Bridgeport..... U 15
450.	Bridgewater..... O 23
500.	Bright..... T 10
1700.	Brighton..... R 21
100.	Briukworth..... P 21
100.	Brinsley..... T 7
50.	Brinston's Corners N 30
50.	Brisbane..... R 13
25.	Britannia Station L 28
100.	Britannia, 3 m E Meadowvale... S 13
25.	Brock..... P 16
25.	Brock Road..... S 12
250.	Brockton..... S 15
6500.	Brockville..... P 28
200.	Brodhagen..... R 8
25.	Bronson..... L 21
550.	Bronte..... T 13
650.	Brooklin..... R 17
25.	Brookfield Station, 4 m E Port Robinson..... V 15
60.	Brooksdale..... T 9
300.	Brougham..... R 16
25.	Brouseville..... N 29
90.	Brown's Corners R 15
100.	Brownsville..... V 9
250.	Brucefield..... R 7
1298.	Bruce Mines..... D 2
60.	Brudenell..... K 23
50.	Brunner..... R 9
50.	Brunswick..... P 18
1000.	Brussels..... Q 8
100.	Bryanston..... R 8
75.	Buckhorn..... T 4
35.	Buckshot..... M 24
150.	Bullocks Corners T 12
25.	Buessan..... P 11
25.	Bunyan..... U 4
600.	Burford..... U 11
200.	Burgessville..... U 10
180.	Burgcyne..... N 9
120.	Burleigh..... N 20
200.	Burabrae..... P 21
50.	Burnhamthorpe... S 14
250.	Burnley..... Q 20
50.	Burns..... R 9
100.	Burnstown..... K 25
25.	Burnt River..... N 18
400.	Burritts Rapids... N 28
	Burrowsville, see Ethel..... Q 8
50.	Burtch..... U 11
25.	Burton..... Q 17
	Burwick, chngd to Woodbridge.... R 14
90.	Bury's Green..... O 13
200.	Bushfield..... Q 8
25.	Butternut..... L 31

Pop.	Towns—continued.
90.	Buttonville..... R 15
100.	Buxton..... X 4
25.	Buxton Station... X 4
150.	Byng..... V 13
307.	Byng Inlet..... H 12
125.	Byron..... U 7
25.	Cadmus..... Q 17
200.	Cæsarea..... Q 17
300.	Cainsville, 2 m E Langford..... U 12
250.	Caintown..... P 27
150.	Calrngorm..... U 6
100.	Caistorville..... U 13
25.	Calabogie..... L 25
120.	Calder..... U 7
75.	Caldwell..... R 13
	Caledon, see Charleston Stat'n Q 13
	Caledon East, see East Caledon... Q 13
2000.	Caledonia..... U 12
90.	Caledonian Flats L 32
100.	Caledonia Springs K 32
25.	Calton..... V 9
120.	Camborne..... Q 19
250.	Cambray..... O 17
25.	Cambray Station O 17
500.	Camden East..... P 24
60.	Cameron..... O 18
25.	Camerontown... M 32
100.	Camilla..... Q 12
50.	Camlachle..... T 5
1000.	Campbellford... P 20
100.	Campbells..... R 13
	Campbells Cross, see Campbells... R 13
25.	Campbellton 8 m S E Glencoe Junc. V 6
100.	Campbelltown... L 24
200.	Campbellville... S 13
90.	Campden..... U 14
25.	Canaan..... L 30
80.	Canard River... X 1
200.	Canborough... V 13
25.	Candasville... V 14
400.	Canfield..... V 13
600.	Cannifton..... Q 22
130.	Canning..... T 10
800.	Cannington... O 16
25.	Cannington Stat'n O 16
200.	Canton..... R 18
25.	Cape Croker... L 10
80.	Cape Rich..... M 11
25.	Carden..... N 17
25.	Cardwell..... R 23
1500.	Carleton Place... M 27
25.	Carleton Place Jr. M 27
100.	Carlingford... S 8
270.	Carlisle..... T 13
100.	Carlow..... Q 7
150.	Carlsruhe..... P 9
25.	Carlton..... S 14
25.	Carluke..... U 12
100.	Carnarvon..... L 18

Pop.
25
25.
150.
1000.
100.
175.
70.
200.
100.
25
100.
25.
30.
30.
125.
25.
100.
200.
400.
200.
300.
160.
100.
90.
25.
750
250.
150.
25.
60.
50
60.
100
150
300.
150.
50.
25.
25.
25.
40.
150.
200.
80.
300.
5873.
450.
25.
25.
100.
25.
250.
100.
125.
300.
25.

...continued.

.....R	15
.....X	4
tion.....X	4
.....V	13
.....H	12
.....U	7
.....Q	17
.....Q	17
2 m E	
.....U	12
.....P	27
.....U	6
.....U	13
.....L	25
.....U	7
.....R	13
see	
n Stat'n	Q 13
st, see	
don..	Q 13
.....U	12
Flats..	L 32
Springs	K 32
.....V	9
.....Q	19
.....O	17
ation..	O 17
st.....	P 24
.....O	18
wn.....	M 32
.....Q	12
.....T	5
rd.....	P 20
.....R	13
Cross,	
bells..	R 13
n 8 m S	
Junc..	V 6
wn.....	1 24
le.....	S 13
.....U	14
.....L	30
er.....	X 1
.....V	13
.....V	14
.....V	13
.....Q	22
.....T	10
.....O	16
Stat'n	O 16
.....R	18
.....L	10
.....M	11
.....N	17
.....R	23
ce.....	M 27
ce Jc..	M 27
.....S	8
.....T	13
.....Q	7
.....P	9
.....S	14
.....U	12
.....L	18

Pop. Towns—continued.

25.	Carmuncock, 5 m		
	S E Moncrieff..	R	8
25.	Carnegie.....	O	9
150.	Carp.....	L	27
1000.	Carronbrook.....	R	8
100.	Carrville.....	R	15
175.	Carsonby.....	M	28
70.	Carthage.....	R	10
200.	Cartwright.....	Q	17
100.	Cashel, 1 m S Mil-		
	nesville.....	Q	15
25	Cashion's Glen...	M	31
100.	Cashmere.....	V	6
25.	Caas Bridge, 2 m N		
	Dunbar.....	N	30
30.	Casselman.....	L	31
30.	Cassels.....	T	9
125.	Castleberg.....	Q	13
25.	Castleford.....	K	25
100.	Castleford Station	K	25
200.	Castlemore.....	R	14
400.	Castleton.....	Q	20
200.	Cataract.....	R	12
300.	Catarqui.....	Q	25
160.	Cathcart.....	U	10
100.	Cavan.....	Q	18
90.	Cavanville, 2 m W		
	Cavan.....	Q	18
25.	Cawdor, 8 m N E		
	Clareview.....	O	23
750	Cayuga.....	V	13
250.	Cedar Dale.....	R	17
150.	Cedar Grove.....	R	16
25.	Cedar Hill.....	L	26
60.	Cedar Lake Vil-		
	lage.....	M	23
50	Cedarville.....	P	11
60.	Centralla.....	S	7
100	Centre Augusta...	O	28
150	Centreton.....	Q	20
300.	Centreville.....	U	9
150.	Centreville.....	Q	13
50.	Centreville.....	P	24
25.	Chalk River.....	H	23
25.	Chandos.....	N	20
25.	Chantry.....	O	27
40.	Chapman.....	P	22
150.	Charing Cross.....	X	4
	Charlesville, see		
	Haydon.....	Q	17
200.	Charleville.....	O	29
80.	Charleston.....	P	27
300.	Charleston Station	Q	13
5873.	Chatham.....	W	4
450.	Chatsworth.....	N	10
25.	Chambless.....	O	19
25.	Chaudiere Junct'n.	L	29
100.	Cheapside.....	V	12
25.	Cheeddar.....	M	20
250.	Cheitenham.....	R	13
100.	Chepstow.....	O	8
125.	Cherry Creek.....	P	14
300.	Cherry Valley.....	R	23
25.	Cherrywood.....	R	16

Pop. Towns—continued.

150	Chesley.....	O	9
	Chester, see Don-		
	caster.....	S	15
100	Chesterfield.....	T	10
25.	Chesterville.....	M	30
25.	Chevalier, 2 m E		
	Stony Point.....	X	3
100.	Cheviot.....	P	8
1250.	Chippawa.....	V	15
	*Chiselhurst, Tuck-		
	ersmith Co.		
	*Chiselhurst, Huron		
	Co.		
25.	Christina, 3 m S		
	W Mt. Brydges..	U	7
125.	Chrysler.....	M	30
200.	Church Falls.....	R	12
160.	Churchill.....	P	14
200.	Churchville.....	S	13
25.	Chute au Blondeau	K	33
100.	Clachan.....	W	5
200.	Clairville.....	R	14
25.	Clandeboye.....	L	27
25.	Clandeboye.....	T	7
500.	Claremont.....	Q	16
150	Clarence.....	K	30
150.	Clarence Creek...	K	30
25.	Clareview.....	O	23
350.	Clarke.....	R	13
25.	Clark's.....	O	23
300.	Clarksburg.....	N	12
25	Clark's Crossing, 5		
	m E Greenbush..	O	27
25.	Clarkson, 3 m S W		
	Port Credit.....	S	14
	Clark's Station, see		
	Clark's.....	O	23
200.	Clarksville.....	P	14
100	Claude.....	R	13
100.	Clavering.....	M	10
250.	Clayton.....	M	26
100.	Clear Creek.....	W	10
150.	Clearville.....	W	6
25.	Cleary's.....	M	23
650.	Clifford.....	P	10
3500	Clifton.....	U	15
25.	Clifton House.....	U	15
25.	Clinesville.....	U	13
2016.	Clinton.....	R	7
100.	Clontarf.....	K	24
100.	Clover Hill.....	P	14
40.	Cloyne.....	N	23
25.	Clyde.....	T	12
80	Cobden.....	J	25
1 <sup>o</sup>	Coboconk.....	N	18
6000.	Cobourg.....	R	19
150	Codrington.....	Q	21
50.	Colbeck.....	Q	11
80.	Colborne.....	R	20
200.	Colchester.....	Y	1
25.	Colchester Station	X	1
200.	Coldsprings.....	Q	19
100.	Coldstream.....	U	7
250.	Gold Water.....	N	15

Pop. *Towns—continued.*

300.	Colebrook	.....P	24
200.	Coleraine	.....R	14
200.	Coleridge	.....P	12
75.	Cole's Corners, 2 m N Logierait	.....U	4
100.	Collnville	.....U	4
400.	Collingwood	.....N	12
130.	Collins Bay	.....Q	25
25	Collins Bay	.....F	10
	Collins Inlet, see Collins Bay	.....F	10
50.	Colpoys Bay	.....L	9
400.	Columbus	.....Q	17
100	Comber	.....X	3
50.	Combermere	.....K	22
	Concord, see Edgely	.....R	14
450.	Conestogo	.....S	11
25.	Conn	.....P	11
150.	Connor	.....Q	13
500.	Connaught	.....M	30
150.	Conroy	.....S	9
500.	Consecon	.....R	21
100.	Constance	.....R	8
80.	Conway	.....R	24
25.	Cooks	.....U	13
600.	Cookstown	.....P	14
400.	Cooksville	.....S	14
100.	Cooper	.....O	22
300.	Copenhagen	.....V	8
200.	Copetown	.....T	12
100.	Copleston	.....U	4
25.	Corbett	.....S	6
150.	Corinth	.....V	9
	Cornabuss, see Markdale	.....O	11
	*Cornell, Oxford Co.	.....V	10
100	Cornellville	.....V	10
8000.	Cornwall	.....N	32
25.	Cornwall Centre	.....N	81
	*Corseley, Elgin Co.	.....U	4
200.	Corunna	.....U	4
175.	Cotswold	.....Q	10
25.	Couchiching	.....N	16
100.	Coulson	.....N	15
150.	Courtland	.....V	10
25.	Courtright	.....U	4
250.	Coventry	.....Q	14
225.	Coverley	.....O	10
30.	Cowal	.....V	7
150.	Craighurst	.....N	14
80.	Craigleith	.....N	12
300.	Craigsholme	.....R	12
	Craigvale, see Craigville	.....O	15
100.	Craigville	.....O	15
50.	Cranworth	.....O	27
	Cranbrook, see Grey	.....R	8
25.	Cranston, 8 m W Cayuga	.....V	13
25.	Crathie	.....U	6
80.	Crawford	.....O	10
250.	Credit	.....S	14

Pop. *Towns—continued.*

100.	Crediton	.....S	7
30.	Creek Bank	.....R	11
300.	Creemore	.....O	13
70.	Creighton	.....N	15
200.	Cressy	.....R	24
50.	Crieff	.....S	12
80.	Crinan	.....V	6
80.	Crofton	.....R	22
100.	Cromarty	.....S	8
25.	Crossland	.....N	14
150.	Cross Hill	.....R	10
25.	Croton, 6 m W Thamesville	.....W	5
250.	Crowland	.....V	15
	Croxon's Corners, see Fennells	.....P	14
100.	Croydon	.....P	23
100.	Crulckshank	.....M	10
30.	Crumlin	.....U	8
	Crysler, see Chrysler	.....M	30
200.	Culloden	.....U	9
200.	Cumberland	.....K	30
25.	Cumberland Mills	.....K	29
200.	Cumminsville	.....T	13
80.	Cunnoch	.....R	11
180.	Curran	.....K	31
25.	Currie	.....U	10
25.	Curry Hill	.....M	33
30.	Dacre	.....K	24
25.	Dale, 2 m N Port Hope	.....R	19
150.	Dalhousie Mills	.....L	33
100.	Dalketh	.....L	32
100	Dalrymple	.....N	17
80.	Dalston	.....O	14
25.	Damascus	.....Q	11
50.	Danforth	.....R	15
	Danger Point, see Aberfoyle	.....S	12
25.	Darbyville	.....S	13
25.	Darcy	.....Q	26
	*D'Arcy, Frontenac Co.	.....V	13
25.	Darling Road Sid-lug	.....W	4
200.	Darrell	.....Q	20
160.	Dartford	.....N	17
100.	Dartmore	.....S	6
100.	Dashwood	.....R	15
120.	Davenport	.....R	15
200.	Davisville	.....R	15
75.	Dawn Mills	.....V	5
25	Dawson	.....M	29
50.	Daywood	.....M	11
150.	Dealtown	.....X	4
25.	Deans	.....V	13
100.	De Cewsville	.....V	12
25.	Dee Bank	.....K	16
25	Deerdock	.....N	25
75.	Deerhurst	.....P	14
25.	Dejaware	.....U	7
400.	Delaware Station	.....U	7
300.	Delhi	.....V	10

Pop. 300. 300. 8. 100. 100. 2. 150. 100. 150. 25. 25. 200. 87. 25. 100. 60. 150. 60. 300. 25. 25. 150. 100. 40. 25. 35. 150. 150. 100. 25. 1. 150. 30. 1. 200. 1. 25. 50. 60. 25. 250. 150. 100. 80. 200. 500. 1000. 50. 25. D

Towns—continued.

n	S	7
ank	R	11
re	O	13
on	N	15
	R	24
	S	12
	V	6
	R	22
y	S	8
i	N	14
l	R	10
6 m W		
ville	W	5
	V	15
Corners,		
nells	P	14
	P	23
nk	M	10
	U	8
see		
	M	30
	U	9
nd	K	30
nd Mills	K	29
ille	T	13
	R	11
	K	31
	U	10
	M	33
	K	24
N Port		
	R	19
ills	L	33
	L	32
	N	17
	O	14
	Q	11
	R	15
t, see		
	S	12
	S	13
	Q	26
tenac		
Sid.		
	V	13
	W	4
	Q	20
	N	17
	S	6
	R	15
	R	15
	V	5
	M	29
	M	11
	X	4
	V	13
	V	12
	K	16
	N	25
	P	14
	U	7
on	U	7
	V	10

Pop. Towns—continued.

300.	Delta	O	27
300.	Demorestville	R	23
80.	Denbigh	L	23
100.	Denfield	T	7
100.	Denston	O	25
25.	Depot Village	P	21
	*Derrynane, Well- ington Co.		
	*Derrynane, Arthur Co.		
150.	Derryville	P	16
100.	Derry West	R	14
150.	Derwent	U	8
25.	Desborough	N	10
25.	Desert Lake	P	25
200.	Desmond	P	24
87.	Deux Rivieres	G	20
25.	Devils Creek	M	19
100.	Devizes	T	8
	Devon, see Centra- lia		
	Dexter	W	8
60	Diamond	L	27
150.	Diamond	L	27
60.	Dickens	O	27
300.	Dickinson's Land- ing	N	31
25.	Diltz	V	14
	Dingle, see Brus- sels		
	Dingwall, 2 m S E Huron Station	O	8
	Dixie	S	14
150.	Dixie	S	14
100.	Dixon's Corners	N	30
40.	Dobblington	N	9
	*Doe Lake, Musko- ka Co.		
25.	Dog's Nest, 1 1/2 m fr. Pt. Dover	V	11
35	Dollar	R	15
150.	Don	S	15
150.	Doncaster	S	15
100.	Donegal	R	9
	Don Mount, see Toronto		
	Don Station	S	15
25.	Don Station	S	15
150.	Doon	S	11
30	Doran	N	26
200.	Dorchester Station	U	8
25.	Dore Lake	J	24
50.	Dorking	R	10
60.	Dornoch, 4 m W Beachville	U	9
	Dougherty's	S	9
25.	Dougherty's	S	9
250.	Douglas	R	12
150.	Douglas	K	24
100.	Dover South	W	4
80.	Downeyville	P	18
200.	Downsview	R	14
500.	Drayton	Q	10
	Dreaney's Corners, see Crumlin		
	Dreaney's Corners	U	8
1000.	Dresden	V	4
50.	Drew	P	10
25.	Dromore	P	11

Pop. Towns—continued.

125.	Drum	Q	18
600.	Drumbo	T	10
1000.	Drummondville	V	15
25.	Drummondville West, 2 m S W Clifton	U	15
25.	Drumquinn	S	13
65.	Drury, Simcoe Co., 8 m fr. Barrie	O	14
	Dryden, see Palm- erston		
	Drysdale, see Drys- daleville		
75.	Drysdaleville	R	6
200.	Duart	W	6
25.	Dublin	O	27
25.	Dufferin	V	12
500.	Duffin's Creek	R	16
100	Dumblane	N	8
25	Dunfries	T	11
25.	Dunfries Station	T	11
150.	Dunbar	N	30
150.	Dunbarton	R	16
25.	Duncan	O	12
150.	Duncanville	M	30
	*Dunchurch, Mus- koka Co.		
75.	Duncrief	T	7
30	Dundalk Station	P	11
8135.	Dundas	T	12
200.	Dundela	N	30
50.	Dundonald	Q	20
25.	Dunedln	O	13
200.	Dungannon	P	7
60.	Dunkeld	O	9
25.	Dunneys Rapids	O	22
1452.	Dunnville	V	14
100.	Dunrobin	K	27
100.	Dunstnane, 5 m W Lucknow	P	8
80.	Dunsford	O	18
150.	Duntron	O	12
250.	Dunvegan	L	32
1230.	Durham	O	10
25.	Dutton	V	6
	Dutton Station, see Dutton		
	Dutton Station, see Dutton		
	Duyer's Corners, see Lockton		
	Duyer's Corners	Q	13
25.	Dwyer Hill	M	28
150.	Eagle	W	6
25.	Eagle Lake	L	19
25.	Eagle Rock	P	24
25.	Eamer's Corners	N	31
100.	East Caledon	Q	13
100.	East Hawkesbury	L	32
25.	Eastman's Springs	L	29
250.	Easton's Corners	N	23
60.	East Oro	N	15
	Eastville, see Holt		
	Eastville, see Holt		
100.	East Williamsburgh	N	33
200.	Eastwood	U	10
80.	Ecclesville	X	3
70.	Eddystone	Q	20

Pop. *Towns—continued.*

150. Eden.....	V	9
Eden Grove, see Pinkerton Sta.	O	9
300 Eden Mills.....	S	12
100. Edgar.....	N	15
25. Edgcombe, 3 m W Millbank.....	R	9
150. Edgely.....	R	14
55. Edgeworth.....	X	3
150. Edmonton.....	R	15
300. Edwardsburgh.....	O	29
50 Eflingham.....	U	14
400. Eganville.....	K	24
50 Egbert, 3 m W Thornton.....	P	14
45 Egerton.....	P	11
300 Eglington.....	R	15
500. Egmondville.....	R	7
50. Egremont.....	P	10
25. Ekfrid.....	V	6
25. Ekfrid Station.....	V	6
25. Elarton Salt Works	T	5
100. Elba.....	P	12
25. Elcho.....	V	14
70. Elder.....	P	13
25. Elders Mills.....	R	14
25. Eldon.....	O	17
100. Eldorado.....	O	22
150. Eifrida.....	U	13
250. Elgin.....	O	27
150. Elginburgh.....	P	25
100. Elginfield.....	T	8
Elgin Mills, see Richmond Hill.	Q	15
100. Elmville.....	S	7
150 Elizabethville.....	Q	18
100. Ellengowan.....	O	9
80. Elliott.....	N	26
25. Ellsville.....	P	27
40. Ellesmere.....	R	15
25. Elm.....	L	27
70. Elmbank.....	R	14
100. Elm Grove.....	P	14
800. Elmira.....	R	10
25. Elmora.....	T	9
150 Elmvale.....	N	14
25 Elmwood.....	O	9
1950. Elora.....	R	11
30. Elphin.....	N	25
50. Elsinore.....	N	9
25. Emberson, 5 m E Huntsville.....	K	17
550. Embro, 3 m S E Bennington.....	T	8
100. Embrun.....	L	30
100. Emerald.....	R	24
*Emmett, Renfrew Co.		
80 Enfield.....	Q	17
250. Enniskillen.....	Q	17
190. Ennismore.....	O	19
Ennotville, see Hewgill	R	11
250. Enterprise.....	P	24

Pop. *Towns—continued.*

*Enterprise Land- ing, Algoma Co.		
25. Epping.....	N	11
80. Epsom.....	Q	12
100. Eramosa.....	R	16
25. Erbsville.....	S	10
80. Erie.....	V	12
600. Erin.....	R	12
70. Erinsville.....	P	23
150 Ernestown.....	Q	24
100 Erroll.....	T	4
200 Escott.....	P	27
*Eskdale, Bruce Co.		
250. Esquesing, 3 m N W Ash Grove.....	S	13
25. Essex Centre.....	X	2
80. Ethel.....	Q	9
25. Ethel Station.....	Q	9
100. Eugenia.....	O	11
150. Evelyn.....	U	8
100. Everett.....	P	13
150 Eversley.....	Q	15
250 Everton.....	R	12
1000. Exeter.....	S	7
Fairfield, see Troy	X	5
100. Fairfield East.....	O	28
70. Fairfield Plain.....	U	11
75. Fairview.....	T	9
25. Fairview.....	R	15
50. Falding.....	K	14
25. Falkenburg.....	L	16
200 Falkirk.....	T	7
60. Falkland.....	T	11
80. Fallbrook.....	N	26
25. Fallowfield.....	L	28
500. Farmersville.....	O	27
60. Farmington.....	Q	12
150. Farquhar.....	S	7
300. Farran's Point.....	N	31
25. Fawkham.....	N	16
25. Fawn, 3 m N Ath- erly.....	N	16
25. Feeder.....	V	14
25. Feeder Siding.....	V	14
50. Felton.....	M	30
90. Fenaghvale.....	L	32
60. Fenella.....	Q	20
750 Fenelon Falls.....	O	18
80. Fennells.....	P	14
100. Fenwick.....	V	14
1950. Fergus.....	R	11
150. Fergusons Falls.....	M	26
125. Fergusonvale.....	N	14
50. Fermoy.....	O	25
80. Fernhill.....	U	7
190. Ferry Pt.....	Q	22
*Fetherston, Mus- koka Co.		
50. Feversham.....	O	12
*Fielding, Middle- sex Co.		
500. Fingal.....	V	7
25. Fintona.....	P	13
25. Fish Creek.....	T	8

Towns—continued.

Algonia Co.	N	11
Land-	Q	18
else	R	12
.....	S	10
.....	V	12
.....	R	12
.....	P	23
.....	Q	24
.....	T	4
.....	P	27
Bruce Co.	S	13
g, 3 m N	X	2
Grove.	Q	9
ntre.	Q	9
tion.	O	11
.....	U	8
.....	P	13
.....	Q	15
.....	R	12
.....	S	7
see Troy X	O	25
.....	X	8
Plain.	U	11
.....	T	9
.....	R	15
.....	K	14
g.	L	16
.....	T	7
.....	T	11
.....	N	26
le.	O	27
.....	O	27
.....	S	7
int.	N	31
.....	N	16
N Ath-	N	16
.....	V	14
ng.	V	14
.....	M	30
.....	L	32
.....	Q	20
ls.	O	18
.....	P	14
.....	V	14
.....	R	11
alls. M	N	14
.....	O	25
.....	Q	7
.....	U	22
Mus-	O	12
.....	O	12
ldie-	V	7
.....	P	13
.....	T	8

Pop. Towns—continued

110. Fisher's Mills, 1 m	S	11
fr. Hespeler.	V	12
60. Fisherville	K	27
300. Fitzroy Harbor.	sec	
Five Stakes,	Talbotville	
Royal.	V	7
25. Fleetwood.	P	18
25. Flesherton	O	11
350. Flesherton Station	O	11
25. Fletcher.	X	4
100. Flinton	O	23
100. Flora.	R	11
Floraldale, see Flo-		
ra.	R	11
350. Florence.	V	5
25. Florence Vale, 2 m	N Kelvin	U 11
150. Foley	R	17
500. Fonthill.	V	15
200. Fordwich.	Q	9
100. Fordyce.	Q	8
500. Forest	T	5
50. Forester's Falls.	J	25
200. Forest Mills, 9 m N	W Napance.	Q 24
100. Forestville.	W	10
100. Forfar.	O	27
25. Forks.	Q	13
10. Formosa.	P	9
25. Forrest Mills, 2 m	S Robin	P 23
1000. Fort Erie.	W	16
Fort Teiniscamin-		
gue.	F	36
100. Fort William.	I	23
75. Fort William.	D	25
25. Foster's.	N	27
70. Fournier.	L	31
25. Fowler's Corners,	6 m S W Peter-	
borough.	P	19
150. Foxborough.	Q	21
25. Foxborough, 3 m S	Halloway	P 22
25. Foymont	K	23
90. Frampton, 1 m fr.	Dorchester Sta.	U 8
900. Frankford.	Q	22
25. Frank Hill	P	18
100. Franklin	P	18
200. Franktown	M	27
200. Frankville.	O	27
25. Frasers Corners.	R	9
25. Frazerville.	P	18
300. Fredericksburgh.	V	10
25. Fredericksburgh	Station.	Q 24
150. Freelon	T	12
100. Freeport	S	11
100. Freiburgh.	S	11
100. Frenchmans Bay,	2 m S Dunbarton.	R 16
150. Frogmore's	S	14

Pop. Towns—continued.

30. Frome.	V	7
150. Fullarton	S	3
25. Fuller, 3 m N Molraip	P	22
150. Fulton.	U	13
50. Gads Hill.	S	9
25. Galbraith	M	26
25. Gallingertown	N	30
3937. Galt.	T	11
30. Galway	N	18
30. Gamebridge	Q	16
2020. Gananoque	Q	27
25. Gananoque Station	Q	27
250. Garafraxa	Q	12
85. Garden Hill	Q	13
1150. Garden Island	Q	25
400. Garden River, 25 m	N W Bruce Mines	D 2
25. Garnet.	V	12
25. Garrison.	V	16
50. Gemley.	M	24
1500. Georgetown	R	13
180. Georgetown, 2 m S	Tweed	P 23
300. Georgina	P	15
100. German Mills	S	11
*Gesto, Essex Co.		
40. Gibraltar	N	12
*Gibson, Simcoe Co.		
60. Gilberts Mills.	R	22
200. Gilford.	P	14
25. Gillie's Hill	O	9
200. Gladstone.	U	8
25. Gladstone	O	29
80. Glamis	O	8
25. Glamorgan, 4 m N	Elizabethville	Q 13
250. Glanford	U	13
25. Glanmire	N	21
107. Glanworth.	U	8
55. Glas-cott	C	10
25. Glasgow	Q	14
100. Glasgow	Q	16
50. Glastonbury.	N	23
400. Glenallan.	R	10
*Glenannan, Huron	Co.	
*Glenannan, Turn-	berry Co.	
25. Glenarm	O	17
300. Glenburnie	Q	25
80. Glencairn	O	13
Glencoe, see Glen-		
coe Junction	V	6
700. Glencoe Junction	V	6
25. Glen Colln, 3 m N	E Aylmer	V 6
25. Glen Donald	N	23
50. Glen Dower.	P	25
*Glen Gordon, Glen-	garry Co.	
100. Glen Huron	O	12
25. Glen James	L	32
25. Glen Lewis	O	22
123. Glen Major	Q	16

Pop. Towns—continued.

150.	Glenlyon, sta. Gt. Western Ry, 2 m S Mildmay.....	9
80	Glenmoyr.....	9
250.	Glen Morris.....	11
100.	Glennevis.....	33
25.	Glen Norman, 5 m S Strathroy.....	32
25.	Glen Robertson, L.....	6
25.	Glenroy.....	32
200.	Glen Sandfield.....	32
25.	Glenshee.....	10
25.	Glen Stewart.....	29
250.	Glen Tay.....	26
150.	Glenvale.....	25
25.	Glenville.....	15
25.	Glen Walter.....	32
900.	Glen Williams, N Appln.....	13
25.	Glen Willow, 5 m Gloucester, see Gloucester Stat'n L.....	6
25.	Gloucester Pool.....	29
50	Gloucester Station L.....	15
50.	Gobles Corners.....	29
4400.	Goderich.....	10
25.	Golden Lake.....	7
60.	Goldstone.....	23
25	Gooderham.....	11
25	Goodwood.....	19
100.	Goodwood, Essex Co. *Gordon, Essex Co. Gore Bay.....	16
25.	Gore's Landing.....	9
100.	Gormley.....	15
10.	Gormley.....	15
400.	Gorrie.....	9
70	Gosfield, 1 1-2 m E Kingsville.....	2
50.	Gosport.....	23
100.	Gourock.....	12
25.	Governor's Road.....	10
25.	Gowan Station.....	15
50.	Gowanstown.....	9
25.	Gower Corners.....	28
40.	Gower Point.....	25
600.	Grafton.....	20
25.	Grafton Station.....	20
110	Grahamsville, 1 1-2 m N W Malton.....	14
25.	Grand Bend.....	6
	Grand Trunk Junction, see Brockville Station.....	28
40.	Grant.....	30
100.	Grantley.....	30
55.	Grant's Mills, 3 m fr. Heckston.....	29
950.	Granton.....	8
25.	Granton Station.....	8
	Grass Hill, see Oakwood Station.....	17
25.	Grassmere.....	17
25.	Gravel Hill.....	5
25.	Gravelotte.....	10

Pop. Towns—continued.

400.	Gravenhurst.....	M 16
100.	Graystock.....	P 19
100.	Greenbank.....	Q 16
50.	Greenbush.....	O 27
60.	Greenfield.....	L 31
25	Greenhook.....	O 8
40.	Greenpoint.....	R 23
50.	Green River.....	R 16
25.	Green's Corners.....	U 13
200.	Greensville.....	T 13
25.	Greenview.....	L 21
500.	Greenwood.....	R 16
25.	Grenfel.....	O 14
25.	Gresham.....	O 8
100.	Gretna.....	Q 23
250.	Grey.....	R 8
25.	Greystead, 6 m S E Allsa Craig.....	T 7
25.	Gribbon.....	R 14
60.	Griersville.....	N 11
50.	Griffin's Corners, 1 m fr. Latona.....	O 10
75.	Griffith.....	L 24
800.	Grimsby.....	U 14
50.	Grovesend.....	W 9
6878.	Guelph.....	S 12
	*Guthrie, Simcoe Co. Guysborough.....	V 10
150.	Gwillimburg.....	P 15
25.	Gyrran, 4 m E Emburn.....	L 30
25.	Haden's Corners.....	Q 22
25.	Hagerman's Corners, 2 m S Unionville.....	R 15
150.	Hagersville.....	V 12
50.	Hagles Corners.....	U 9
150.	Haliburton.....	L 19
	Hall Corners, see Binbrook.....	U 13
100.	Halloway.....	P 22
25.	Hall's Bridge.....	O 19
25.	Hall's Glen.....	O 30
25.	Hallville.....	M 29
100.	Hallville.....	S 12
	Haltonville, see Hallville.....	S 12
75.	Hamburg.....	Q 24
26716.	Hamilton.....	T 13
25.	Hanlet.....	N 26
100.	Hammond.....	R 9
25.	Hampshire Mills.....	N 15
25.	Hampstead, 2 m S E Lisbon.....	S 9
400.	Hampton.....	R 17
	Hands ville, see Stanton.....	P 13
50.	Hannon.....	T 13
700.	Hanover.....	P 10
25	Harcourt.....	K 25
40.	Hardinge.....	N 23
25	Harkaway.....	N 11
150.	Harlem.....	O 25
100.	Harley.....	U 19

Pop.

25.
80.
150.
100.
100.
125.
120.
200.
55.
25.
600.
25.
150.
300.
100.
150.
100.
25.
400.
900.
25.
25.
2100.
500.
70.
25.
100.
125.
25.
200.
100.
300.
25.
100.
50.
25.
70.
He
S
100.
150.
He
b
25.
He
W
E
200.
500.
25.
950.
90.
135.
25.
75.
70.



-continued.

M 16  
 P 19  
 Q 16  
 O 27  
 L 31  
 O 8  
 R 23  
 B 16  
 U 13  
 T 13  
 L 21  
 R 16  
 O 14  
 O 8  
 Q 23  
 R 8  
 n SE  
 T 7  
 R 14  
 N 11  
 ers, l  
 a... O 10  
 L 24  
 U 14  
 W 9  
 S 12  
 e Co.  
 V 10  
 P 15  
 n E  
 L 30  
 ers - Q 22  
 Cor-  
 ton-  
 R 15  
 V 12  
 s... U 9  
 L 19  
 see  
 U 13  
 P 22  
 O 19  
 O 20  
 M 29  
 S 12  
 see  
 S 12  
 Q 24  
 T 13  
 N 26  
 R 9  
 ls... N 15  
 n S  
 S 9  
 R 17  
 ace  
 P 13  
 T 13  
 P 10  
 K 25  
 N 23  
 N 11  
 O 2  
 U 10

Pop. *Towns—continued.*

25. Harlock ..... R 8  
 \*Harlowe, Fronte-  
 nac Co.  
 80. Harmony ..... S 9  
 150. Harold ..... P 21  
 100. Harper ..... N 26  
 Harpers Corners,  
 see Harper..... N 26  
 100. Harpley ..... S 6  
 125. Harrietsville, 3 m  
 E Gladstone... U 8  
 120. Harrington West... T 9  
 200. Harrisburg ..... T 11  
 55. Harrisons ..... O 14  
 25. Harrison's Corners M 31  
 600. Harriston ..... Q 10  
 25. Harrow ..... N 23  
 150. Harrow ..... Y 1  
 300. Harrowsmith... P 25  
 100. Hartford ..... U 12  
 Harrington, Fron-  
 tenac Co., 18 m  
 fr. Kingston... Q 25  
 150. Hartley ..... O 17  
 100. Hartman ..... Q 15  
 100. Harwich ..... W 5  
 25. Harwich Station... W 5  
 400. Harwood ..... Q 19  
 900. Hastings ..... P 20  
 25. Haultain ..... O 20  
 25. Havelock ..... P 20  
 2100. Hawkesbury ..... K 32  
 500. Hawkesville ..... R 10  
 70. Hawkestone ..... O 15  
 25. Hawthorne ..... L 29  
 100. Hawtrey ..... U 10  
 125. Hay ..... S 7  
 25. Hay Bay ..... Q 23  
 200. Haydon ..... Q 17  
 100. Hayesland ..... T 12  
 300. Haysville ..... S 10  
 25. Hayswards Falls... O 10  
 100. Hazledean ..... L 28  
 50. Headford ..... R 15  
 25. Head Lake ..... N 17  
 70. Heathcote ..... N 11  
 Hecks Corners, see  
 Spencerville... N 29  
 100. Heckston ..... N 29  
 150. Heidelberg ..... S 11  
 Henderson, see Til-  
 bury ..... X 3  
 25. Henry'n, sta. Gt.  
 West'n Ry., 4 m S  
 E Kchel sta... Q 9  
 200. Henry ..... K 32  
 300. Hepworth ..... M 10  
 25. Hereward ..... Q 12  
 950. Hespeler ..... S 11  
 90. Hewgill ..... R 11  
 135. Hiawatha ..... Q 19  
 25. High Falls ..... L 31  
 75. High Falls... L 25  
 70. Highfield ..... R 14

Pop. *Towns—continued.*

70. Highgate ..... W 5  
 500. Highland Creek... R 16  
 100. Hilda ..... Q 22  
 130. Hillier ..... R 22  
 50. Hillsborough ..... T 5  
 460. Hillsburgh ..... Q 12  
 80. Hillsdale ..... N 14  
 50. Hills Green ..... R 7  
 \*Hilly Grove, Al-  
 goma Co.  
 120. Hilton ..... Q 21  
 150. Hinch ..... P 24  
 100. Hoasle ..... N 30  
 50. Hoath Head ..... N 10  
 60. Hockley ..... Q 13  
 90. Holbrook ..... U 10  
 Holland Corners,  
 see Arnott... N 10  
 700. Holland Landing... Q 15  
 400. Hollen ..... R 79  
 25. Holly ..... O 14  
 50. Holmesdale ..... U 11  
 50. Holmesville ..... R 7  
 100. Holstein ..... P 10  
 60. Holt ..... P 15  
 50. Holyrood ..... U 8  
 150. Homer ..... U 15  
 90. Honeywood ..... P 12  
 25. Hopedeld ..... K 22  
 50. Hopedown ..... M 26  
 25. Hopeville ..... P 11  
 85. Hornby, 3 m N Up-  
 per Hornby... S 13  
 150. Hornings Mills... P 12  
 25. Horse Shoe Bridge M 19  
 100. Houghton ..... W 9  
 25. Houseys Rapids, 15  
 m N Cobocok. N 18  
 100. Howe Island ..... Q 26  
 100. Hubbel's Falls... K 27  
 25. Hudson Bay Co.'s  
 Post... E 8  
 200. Hullsville ..... V 12  
 25. Hullsville Station... V 12  
 200. Humber ..... R 14  
 425. Humberstone ..... V 15  
 400. Humber Summit... R 14  
 50. Humsden ..... Q 14  
 50. Hunsdon ..... Q 14  
 25. Huntersville ..... L 26  
 50. Huntley ..... L 27  
 100. Huntsville ..... K 17  
 25. Hurdville ..... J 15  
 25. Huron Station... O 8  
 125. Huston ..... Q 10  
 25. Huttonville ..... R 13  
 50. Hyde Park Corner U 7  
 70. Ida ..... P 18  
 200. Ilderton ..... T 7  
 250. Ilderton Station... T 7  
 260. Indiana ..... V 13  
 160. Indian River ..... P 20  
 25. Indian Village, 2 m  
 W Rathburn... N 16

Pop. Towns—continued.

25. Indian Village, 2 m S Hiawatha.....	Q	19
25. Indianville.....	P	17
4600. Ingersoll, 5 m S W Beachville.....	U	9
25. Inglis Falls, 3 m S Owen Sound.....	N	10
80. Ingoldsby.....	M	19
100. Instige.....	O	12
256. Inkerman.....	N	29
25. Inkerman.....	K	81
200. Innerkip.....	T	10
25. Innerkip Station.....	T	10
150. Innisfil.....	P	14
200. Innisville.....	M	26
100. Inverary.....	P	25
*Inverhaugh, Wellington (o.)		
150. Inverhuron.....	O	8
150. Invermay.....	N	9
25. Inwood.....	U	5
500. Iona.....	V	7
25. Iona Station.....	V	7
Ireland, see McGillivray.....	T	7
150. Irish Creek Station.....	N	27
1000. Iroquois.....	N	29
300. Islay.....	O	17
200. Islington.....	S	14
200. Ivanhoe.....	P	22
100. Ivy.....	O	14
23. Jackson.....	N	10
*Jaffa, Elgin Co.		
25. Janestown, 5 m N Brussels.....	Q	8
100. Janetville.....	P	17
25. Jarratt's Corners.....	N	15
400. Jarvis.....	V	12
750. Jasper.....	N	27
25. Jelly's Station.....	O	28
50. Jennette's Creek.....	X	3
75. Jersey.....	P	15
150. Jerseyville.....	T	12
25. Jock Vale.....	L	23
25. Johnson.....	M	11
100. Johnson's Mills.....	S	6
200. Johnstown, sta. Grand Trunk Ry.....	O	29
25. Jones Falls.....	P	26
200. Jordan.....	U	11
170. Jordan Station.....	U	14
70. Josephburg, 4 m fr. Petersburg.....	S	10
25. Junction.....	S	14
50. Jura.....	T	6
*Ragawong, Algomacoma Co.		
50. Kaladar.....	O	23
150. Kars.....	M	28
50. Kastnerville, 3 m W Stratford.....	S	9
160. Katesville, 2 m S W Stratroy.....	U	6
25. Keady.....	N	10

Pop. Towns—continued.

150. Keenansville.....	Q	13
400. Keene.....	Q	19
25. Keene Station.....	Q	19
25. Keith.....	V	4
25. Kelly's.....	P	18
200. Kelvin.....	U	11
50. Kemble.....	M	10
1000. Kemptville.....	M	29
250. Kendall.....	Q	18
50. Kenilworth.....	Q	11
124. Kenmore.....	M	29
25. Kensall.....	S	7
50. Kent Bridge.....	W	4
125. Kerrwood.....	U	6
80. Kerry.....	L	31
75. Kertch.....	T	5
125. Keswick.....	P	15
Keswick, see Medina.....	T	8
150. Kettleby.....	Q	14
Kettleby Mills, see Kettleby.....	Q	14
200. Keysar.....	T	6
250. Kilbride.....	S	13
50. Killarney.....	F	9
200. Killean.....	S	12
25. Killeby.....	V	8
40. Kilmanagh.....	R	13
50. Kilmarnock.....	N	28
150. Kilmartin.....	U	6
100. Kilmaurs.....	K	27
80. Kilsyth.....	N	10
55. Kilworth, 3 m NE Komoka.....	U	7
25. Kimberley.....	O	11
100. Kinburn.....	L	27
1907. Kincardine.....	O	7
300. King.....	Q	14
100. King Creek.....	Q	14
100. Kingsbridge.....	P	7
*Kingsburgh, Glangarry Co.		
50. Kinghorn.....	Q	14
25. Kingsford.....	P	23
50. Kinglake.....	V	9
25. Kingsmill.....	V	8
14500. Kingston.....	Q	25
150. Kingston Mills.....	Q	26
800. Kingsville.....	Y	2
25. Kingsville.....	Q	14
150. Kinkora.....	S	9
90. Kinloss.....	P	8
25. Kinlough.....	P	8
100. Kinmount.....	N	18
90. Kinsale.....	R	16
70. Kintall.....	P	7
100. Kintore, 6 m S W Nissouri.....	T	9
50. Kippen.....	S	7
80. Kirby.....	R	18
100. Kirkfield.....	O	17
25. Kirkfield Station.....	O	17
75. Kirkhill.....	L	32
200. Kirkton.....	S	8

ms—continued.

ille.....	Q	13
tion.....	Q	19
.....	Q	19
.....	V	4
.....	P	18
.....	U	11
.....	M	10
.....	M	29
.....	Q	18
.....	Q	11
.....	M	29
.....	S	7
.....	W	4
.....	U	6
.....	L	31
.....	T	5
.....	P	15
ee Me.....	T	8
.....	Q	14
ils, see.....	Q	14
.....	T	16
.....	S	13
.....	F	9
.....	S	12
.....	V	8
.....	R	13
.....	N	28
.....	U	6
.....	K	27
.....	N	10
m NE.....	U	7
.....	U	11
.....	L	27
.....	O	7
.....	O	14
.....	O	14
.....	P	7
Glen.....	P	7
.....	Q	14
.....	R	23
.....	V	9
.....	V	8
.....	Q	25
is.....	Q	26
.....	Q	2
.....	Y	14
.....	Q	9
.....	Q	8
.....	P	8
.....	P	18
.....	R	16
.....	P	7
S W.....	P	7
.....	T	9
.....	S	7
.....	R	18
.....	O	17
on.....	O	17
.....	L	32
.....	S	8

Pop. Towns—continued.

50. Kirkwall.....	T	12
400. Klineburg.....	R	14
25. Knatchbull.....	S	12
500. Komoka.....	U	7
150. Kossuth.....	S	11
200. La Fontaine.....	M	13
100. Laggan.....	L	32
25. Lake Dore.....	J	24
450. Lakefield.....	O	19
25. Lakehurst.....	O	19
100. Lakelet.....	P	9
25. Lake Opinicon.....	P	26
100. Lakeside.....	T	8
100. L'Amable.....	M	21
250. L'Amaroux.....	R	15
250. Lambeth.....	U	7
300. Lambton Mills.....	S	14
25. Lambdash, 5 m NE Hanover.....	P	10
740. Lanark.....	M	26
250. Lancaster.....	M	32
Lancaster, chgd to Ross Mount, 6 m N Port Hope.....	R	19
25. Lanesville.....	P	7
175. Lang.....	P	19
120. Langford.....	U	12
100. Langside.....	P	8
125. Langstaff.....	R	15
60. Langton.....	V	10
250. Lansdown.....	P	27
125. Lansing.....	R	15
100. Largie.....	V	7
150. Laskay.....	Q	14
250. Latona.....	O	10
Latte's Mills, see Plainfield.....	P	22
45. Laudersville.....	S	10
100. Laurel.....	Q	12
100. Lavant.....	M	25
120. Lavender.....	O	13
25. Lawrence.....	V	7
Lawrence Station, see Lawrence.....	V	7
25. Lawrenceville.....	U	15
25. Layton.....	P	17
200. Leamington.....	Y	2
100. Leaskdale.....	P	16
Leavens, see Bay- view.....	M	11
25. Lebanon.....	R	10
25. Le Foulon, 2 m E St. Eugene.....	L	33
800. Lefroy.....	P	14
70. Leinster.....	P	23
100. Leith.....	M	10
25. Lemieux.....	L	31
100. Lemonville.....	Q	15
75. Lennox.....	P	14
200. Leskard.....	Q	18
425. Leslie.....	S	15
25. Lethbridge.....	M	16
100. Lewbville.....	W	5
40. Lieury.....	T	6

Pop. Towns—continued.

100. Lifford.....	Q	18
150. Limehouse.....	S	12
50. Lime Lake.....	P	23
4049. Lindsay.....	P	18
25. Lines Corners.....	U	10
Linkaville, see Mill Haven.....	Q	24
150. Linton.....	Q	14
200. Linwood.....	R	10
*Lion's Head, Bruce Co.....		
200. Lisadel Station.....	Q	9
100. Lisbon.....	S	9
50. Lisburn.....	Q	7
1450. Listowel.....	O	9
Little Britain.....	P	17
150. Little Current.....	F	8
200. Little Rideau.....	K	32
400. Lloydtown.....	Q	14
100. Lobo, 2 m N Cold- stream.....	U	7
100. Loch Garry.....	M	32
60. Lochiel.....	L	32
*Loch Winnoch.....	K	26
*Locklash, Huron Co.....		
25. Locksley.....	J	24
80. Lockton.....	Q	13
100. Lockville.....	N	29
50. Loglerait.....	U	4
150. Lombardy.....	N	27
250. Londesborough.....	Q	8
21000. London.....	U	8
25. Longford Mills.....	N	16
375. Long Island Lock L		28
25. Long Lake.....	O	24
25. Longwood.....	U	6
150. Longwood Station U		6
150. Lonsdale, 4 m N Marysville.....	Q	23
90. Loretto.....	P	13
800. L'Original.....	K	32
25. Lorne.....	O	7
25. Lorneville.....	O	17
25. Lorraine.....	P	13
150. Lotus.....	Q	18
450. Loughborough.....	P	25
100. Loulsville.....	W	4
*Lourds, Russell Co.....		
25. Lovat.....	O	8
140. Lowbanks.....	V	14
25. Lower Hornby.....	S	13
150. Lowville.....	S	13
1000. Lucan.....	T	7
800. Lucknow.....	P	8
200. Lumley.....	S	7
250. Lunenburg.....	M	31
100. Lurgan.....	P	7
60. Luther.....	Q	11
70. Luton.....	V	8
750. Lyn.....	P	28
400. Lynden.....	T	12
200. Lyndhurst.....	P	26

Pop. Towns—continued.

200	Lynedoch.....	V	10
25	Lynn Valley.....	V	11
90	Lynnville.....	V	11
130	Lyons, 3 m N W		
	Springfield.....	V	9
100	Maberly.....	N	25
25	Macbeth.....	L	33
60	Macton.....	R	10
150	Macville.....	R	13
25	Madina.....	P	15
800	Madoc.....	O	22
25	Madrid.....	K	23
207	Magnetawan.....	I	15
125	Maldstone.....	X	2
200	Maitland.....	O	28
160	Maitlandville, 1-2 m		
	S Goderich.....	Q	7
100	Malakoff.....	M	28
85	Malcolm.....	O	9
300	Mallorytown.....	P	27
300	Malone.....	O	21
25	Malta.....	M	16
300	Malton.....	R	14
125	Malvern.....	R	15
275	Manchester.....	Q	17
	Manchester, see		
	Auburn.....	Q	7
100	Mandanlin.....	T	4
500	Manilla.....	P	17
25	Manitowaning.....	H	8
240	Mannheim, 4 m SE		
	Petersburg.....	S	10
200	Manotick.....	L	28
25	Manotick Station.....	L	28
160	Mansfield.....	P	13
	Manvers, see Beth-		
	any.....	Q	18
250	Maple, 2 m S Tes-		
	ton.....	R	14
90	Maple Grove, 4 m		
	fr. W Cornwall N		
	.....	O	9
100	Maple Hill.....	O	9
50	Maple Leaf or		
	Sageville, 1 m fr.		
	Vandear.....	U	10
25	Maple Lodge.....	T	7
70	Mapleton, 3 m W		
	Kingsmill.....	V	8
80	Maple Valley.....	O	12
25	Maplewood.....	T	9
25	Mar.....	L	9
60	Marathon.....	L	27
50	Marble Rock.....	P	27
70	March.....	K	28
100	Marchmont.....	N	15
50	Marden.....	R	12
175	Markdale.....	O	11
1000	Markham.....	R	16
25	Markham Station.....	R	15
40	Marlbank.....	P	23
25	Marmion.....	N	19
25	Marmora Iron		
	Works.....	O	21
25	Marnoch.....	Q	8

Pop. Towns—continued.

250	Marmora, see Mar-		
	mora Iron Works	O	21
25	Marsh Hill.....	P	16
200	Marshville.....	V	14
25	Marshville Station	V	14
50	Marston.....	W	10
100	Marsville.....	Q	12
	Martha, see Pe-		
	trolea.....	U	5
400	Martintown.....	M	32
100	Marysville.....	Q	23
25	Masonville.....	U	8
95	Massle.....	N	11
130	Matawatchan.....	M	24
50	Mattawa.....	F	19
	Matilda, see		
	Iroquois.....	N	29
50	Matlock.....	T	5
25	Mather's.....	Q	19
100	Maxwell.....	O	12
25	Mayburne.....	P	12
25	Mayfair.....	V	6
80	Mayfield.....	R	13
125	Maynard.....	O	28
25	Maynooth.....	L	21
150	McDonalds Corners	N	25
	*McGregor, Essex		
	Co.		
300	McGillivray.....	T	7
	McGillivray Statn.,		
	see McGillivray.....	T	7
25	McGillivray, sta.		
	Gt. W. Ry., 4 m		
	W Bothwell.....	V	5
60	McIntyre.....	O	12
175	McKellar.....	J	14
300	Meadowvale.....	S	13
1200	Meaford.....	N	11
125	Medina.....	T	8
25	Medonte.....	N	14
35	Melancthon.....	P	12
25	Melancthon.....	P	11
150	Melbourne.....	U	7
25	Melissa.....	J	17
100	Melrose.....	Q	23
140	Melrose, 4 m N		
	Komoka.....	U	7
100	Melville.....	Q	13
80	Melville.....	R	22
180	Menle.....	P	21
25	Merivale.....	L	28
75	Merlin.....	X	4
925	Merrickville.....	N	28
1000	Merritton Junc-		
	tion.....	U	15
	Mersea, see		
	Wheatley.....	Y	3
25	Merton.....	T	13
	Metcalf, see Osgood	L	29
25	Metropolitan, 4 m		
	N Granton.....	T	8
25	Metz.....	Q	11
80	Meyersburg.....	Q	20
25	Michaels Bay.....	H	7

s—continued.

ee Mar	
Works	O 21
	P 16
	V 14
Station	V 14
	W 10
	Q 12
ee Pe-	
	U 5
	M 32
	Q 23
	U 8
	N 11
an	M 24
	F 19
see	
	N 29
	T 5
	Q 19
	O 12
	P 12
	V 6
	R 13
	O 28
	L 21
orners	N 25
Essex	
	T 7
stat'n,	T 7
ray,	T 7
sta.	
4 m	
	V 5
	O 12
	J 14
	S 13
	N 11
	T 8
	N 14
	P 12
	P 11
	U 7
	J 17
	Q 23
n N	
	U 7
	Q 13
	R 22
	P 21
	L 28
	X 4
	N 28
unc-	
	U 15
see	
	Y 3
	T 13
ood	L 29
4 m	
	T 8
	Q 11
	Q 20
	H 7

Pop. Towns—continued.

	Michigan Riv-	
	er, see Lake Su-	
	perior Map.....	W 25
25.	Micksburg.....	J 24
	Middlemarch, see	
	Middlemiss.....	V 7
25.	Middlemiss.....	V 7
150.	Middleport.....	U 12
25	Middleport.....	U 14
110	Middleton.....	P 14
200	Middleville.....	M 26
100	Midhurst.....	O 14
25.	Midland.....	M 14
	*Mid Lothian, Mus-	
	koka Co.	
200	Mildmay.....	P 9
400.	Milford.....	R 23
300.	Milbank.....	R 9
100.	Mill Bridge.....	O 22
1200	Mill Brook.....	Q 18
50	Millburn.....	P 26
200	Millie Roches.....	N 31
180	Millgrove.....	T 13
100.	Mill Haven.....	Q 24
30.	Milliken.....	R 15
500.	Mill Point.....	Q 23
200.	Milltown.....	Q 23
125.	Milnesville.....	Q 15
891	Milton.....	S 13
	Milton West, see	
	Milton.....	S 13
150	Milverton.....	R 9
100.	Mimico.....	S 14
50.	Mimosa.....	R 12
150	Minden.....	M 18
50.	Minesing.....	O 13
1802.	Mitchell.....	S 8
25.	Mitchells Bay.....	W 3
25.	Mitchells Square.....	O 15
25.	Murvale.....	P 24
25.	Moffat.....	S 12
400	Mohawk.....	U 11
100.	Mohrs Corner.....	K 27
200	Moira.....	P 22
65	Molesworth, 3 m W	
	Shipley.....	Q 9
25.	Monck.....	Q 11
170.	Moncklan 1.....	M 31
25	Moncrieff.....	R 9
45.	Monymore.....	P 23
100.	Mongolia, 2 m S	
	Milnesville.....	Q 15
200.	Monkton.....	R 8
50.	Mono Centre.....	Q 13
500.	Mono Mills.....	Q 13
25.	Mono Road.....	Q 13
	Mono Road Sta-	
	tion, see Mono	
	Road.....	Q 13
25.	Monzell, 7 m E	
	Bracebridge.....	L 15
100.	Montague.....	N 27
25.	Monteagle Valley.....	L 21
100.	Montrose.....	V 15

Pop. Towns—continued.

450.	Moore.....	U 3
25.	Moorefield or	
	Moore.....	Q 10
50.	Moose Creek.....	M 31
25	Mora.....	O 16
150.	Moray.....	T 6
25.	Mordon's Creek.....	T 8
100.	Morewood.....	M 30
90.	Morgan's.....	P 19
85.	Morganstown.....	Q 20
25.	Morley.....	M 11
50.	Morningdale Mills.....	R 10
600.	Morpeth.....	X 5
40.	Morrisban.....	Q 9
1550	Morrisburgh.....	N 30
400.	Morrison.....	S 12
120.	Mortlake.....	S 15
250.	Morton.....	P 26
50.	Morven.....	Q 24
60.	Moscow.....	P 24
50.	Moscow, 2 m E	
	Drumbo.....	T 10
25.	Mossborough, 5 m	
	W Guelph.....	S 12
80.	Mossley.....	U 8
100.	Motherwell.....	S 8
150.	Moulinette.....	N 31
25.	Moulton Station.....	V 13
50.	Mountain Grove.....	N 24
50.	Mountain Mills or	
	Stone Mills, 5 m	
	N E Picton.....	R 23
80.	Mountain View.....	Q 22
150.	Mount Albert.....	P 15
100.	Mount Albion.....	U 13
25	Mount Awish.....	Q 14
400.	Mount Brydges.....	U 7
	Mount Carmel, see	
	Offa.....	S 7
150.	Mount Charles.....	R 14
135	Mount Elgin.....	U 9
1550.	Mount Forest.....	Q 10
100.	Mount Healy.....	U 12
	Mount Hope, see	
	Glanford.....	U 12
120.	Mount Horeb.....	P 17
	Mount Hurst, chgd	
	to Castlederg.....	Q 13
25.	Mount Irwin.....	N 18
400.	Mount Pleasant.....	P 18
200.	Mount Pleasant.....	R 13
50.	Mount Salem.....	V 8
75.	Mountsberg.....	S 12
25.	Mount Sherwood.....	L 29
100.	Mount St. Louis.....	N 14
25.	Mount St. Patrick.....	L 24
250.	Mount Vernon.....	U 11
	Mount Webster, 5	
	m N Lansdown.....	P 27
100.	Mount Wolf.....	Q 14
55	Mt. Pleasant, 2 m	
	fr. Bradford.....	P 14
25.	Muddy.....	M 26
25.	Muir, see London.....	U 8

Pop.	Towns—continued.	
100.	Muigrave.....	V 15
25.	Mulmur.....	P 13
100.	Muncey, 10 m E Longwood.....	V 6
25.	Munn's Corners.....	S 13
25.	Munroe's Mills.....	M 31
50.	Munster.....	M 28
200.	Murray.....	R 21
45.	Murvale.....	P 25
50.	Muskoka Falls.....	L 16
36.	Musselburgh.....	S 9
40.	Myre Hall.....	P 22
50.	Myrtle.....	Q 17
200.	Nairn.....	T 7
200.	Nanticoke.....	V 12
3600.	Napanee.....	Q 24
100.	Napanee Mills.....	Q 24
250.	Napier.....	U 6
25.	Napperton.....	U 6
25.	Narrow Station.....	P 21
150.	Nassagaweya.....	S 12
25.	Nassau Mills.....	P 19
50.	Navan.....	L 29
75.	Nelle's Corners.....	V 12
100.	Nelson.....	T 13
300.	Nenagh.....	P 10
100.	Netherby.....	V 15
650.	Neustadt.....	P 9
200.	Nevis.....	N 15
60.	New Aberdeen.....	S 10
100.	Newark.....	U 10
250.	Newbliss.....	O 24
500.	Newboro.....	O 26
25.	New Boyne.....	O 27
130.	Newbridge.....	Q 9
828.	Newburgh.....	P 24
1000.	Newbury.....	V 5
1109.	Newcastle.....	R 18
50.	Newcombe.....	I 14
60.	Newcomb's Mills.....	Q 21
25.	New Credit.....	U 12
150.	New Dublin.....	O 28
300.	New Dundee.....	S 10
150.	New Durham.....	U 10
600.	New Edinburgh, suburb of Ottawa	L 29
	New England, see Eden.....	V 9
150.	New Germany.....	V 15
	New Glasgow, see Aldborough.....	W 6
1003.	New Hamburg.....	S 10
25.	New Hope.....	S 11
90.	Newington.....	M 31
350.	New Lancaster.....	M 33
200.	New Lowell.....	O 13
2800.	New Market.....	Q 15
100.	Newport.....	U 11
75.	Newry.....	R 9
120.	New Ross.....	N 29
25.	Newry Station.....	R 9
180.	New Sarum.....	V 8
	Newstadt, see Neu- stadt.....	P 9

Pop.	Towns—continued.	
	Newton, see Clarke	R 18
200.	Newton Brook.....	R 15
25.	Newtonville.....	R 18
25.	Newtonville Sta- tion.....	R 18
150.	Newton Robinson.....	P 14
2300.	Niagara.....	U 15
25.	Niagara Junction.....	V 16
23.	Nicksville.....	V 11
100.	Nicolston.....	P 14
100.	Nile.....	Q 7
40.	Niles Corner.....	R 22
250.	Nilestown.....	U 8
25.	Nine Corners.....	T 11
100.	Nissourl.....	T 9
100.	Nithburg.....	S 9
50.	Nithvale.....	T 11
	Nixon, see Nicks- ville.....	V 11
200.	Nobleton.....	Q 14
200.	Norham.....	Q 20
100.	Norland.....	N 18
	Normanby, see Or- chard.....	P 10
100.	Normandale.....	W 11
	Normanton, see Port Elgin.....	N 8
25.	North Adjala, 1 m S Rosemont.....	P 13
400.	North Augusta.....	O 28
70.	North Bruce.....	N 8
	North Buxton, see Buxton Station.....	X 4
25.	North Chatham.....	W 4
	North Douro, see Lakefield.....	O 19
25.	North Edinburgh.....	K 29
150.	Northfield.....	U 10
40.	Northfield.....	M 31
25.	North Germany.....	S 11
150.	North Glanford.....	U 12
250.	North Gower.....	M 28
120.	North Kappel.....	M 10
200.	North Lancaster.....	M 33
25.	North Lonsdale.....	Q 23
100.	North Mountain.....	M 29
150.	North Pelham.....	V 14
200.	North Port.....	Q 23
100.	North Ridge.....	X 2
200.	North Seneca.....	U 12
	North Shannon- ville.....	Q 22
25.	North Walsing- ham.....	V 10
300.	North Williams- burg.....	N 30
25.	North Winchester.....	M 30
300.	Norval.....	R 13
25.	Norval Station.....	R 13
80.	Norway.....	S 15
	Norwich, see Nor- wich Cross.....	U 10
850.	Norwich Cross.....	U 10
750.	Norwood.....	P 20

-continued.

Clarke R 18  
 ok... R 15  
 Sta... R 18  
 R 18  
 nson P 14  
 U 15  
 ction V 16  
 V 11  
 P 14  
 Q 7  
 R 2  
 U 8  
 s... T 11  
 T 9  
 S 9  
 T 11  
 Nicks-  
 V 11  
 Q 14  
 Q 20  
 N 18  
 ee Or-  
 P 10  
 W 11  
 see  
 N 8  
 , 1 m  
 P 13  
 a... O 28  
 N 8  
 , see  
 ion... X 4  
 m... W 4  
 see  
 O 19  
 urch K 29  
 U 10  
 M 31  
 ay... S 11  
 rd... U 12  
 M 28  
 M 10  
 er... M 33  
 le... Q 23  
 in... M 29  
 V 14  
 Q 23  
 X 2  
 U 12  
 non-  
 Q 22  
 ing-  
 V 10  
 ms-  
 N 30  
 ter M 30  
 R 13  
 R 13  
 S 15  
 Nor-  
 U 10  
 U 10  
 P 20

Pop. Towns-continued.

125. Notfield..... M 31  
 200. Nottawa..... N 12  
 Nottawasaga, see  
 Duntroon..... O 12  
 100. Oakhill..... N 17  
 250. Oakland..... U 11  
 25. Oak Ridges, 2 m S  
 White Rose..... Q 15  
 1900. Oakville..... S 14  
 500. Oakwood..... P 17  
 25. Oakwood Station.. O 7  
 175. Oban..... T 4  
 750. Odessa..... Q 24  
 100. Oifa..... S 7  
 25. Ohaweken..... J 12  
 25. Oil City..... U 4  
 350. Oil Springs..... V 5  
 25. Oldfield, 5 m S E  
 Wallaceburgh... V 4  
 Old Lancaster, see  
 North Lancaster M 33  
 25. Old Montrose..... X 3  
 100. Olinda..... X 2  
 \*Olliphant, Bruce Co.  
 25. Omagh..... S 13  
 600. Omeme... P 18  
 100. Ompah..... M 24  
 200. Oneida..... U 12  
 60. Ongley..... Q 21  
 400. Onondaga..... U 12  
 25. Ontario..... U 14  
 25. Orange Hill..... P 20  
 1850. Orangeville..... Q 13  
 25. Orangeville Junc. Q 12  
 150. Orchard..... P 10  
 25. Oriel, 7 m S E  
 Woodstock... T 9  
 2832. Orillia..... N 15  
 80. Orleans..... K 29  
 40. Ormond..... M 30  
 25. Oro..... N 15  
 1000. Orono..... R 18  
 220. Orwell..... V 8  
 82. Osaca..... Q 18  
 25. Osborne..... U 4  
 100. Osceola..... J 24  
 25. Osgoode..... M 29  
 50. Osgoode Station.. M 29  
 4000. Oshawa..... R 17  
 25. Oshawa Station... R 17  
 150. Osnabruk Centre.. N 30  
 Osprey, see Maple  
 Valley..... O 12  
 60. Ospringe..... R 12  
 25. Ossian..... U 4  
 \*Ostrander, Oxford  
 Co.  
 21545. Ottawa..... L 29  
 150. Otter Creek, 4 m S  
 Walkerton..... P 9  
 750. Otterville..... U 10  
 25. Oungah..... W 4  
 25. Oustic..... R 12  
 150. Outram..... O 9

Pop. Towns-continued.

25. Ounvry, 7 m S Char-  
 ing Cross..... X 4  
 60. Overton..... P 24  
 3639. Owen Sound... N 10  
 150. Oxenden..... M 10  
 Oxford, see Oxley Y 1  
 Oxford, see Duart. W 6  
 50. Oxford Centre... U 10  
 150. Oxford Mills... N 28  
 80. Oxford Station.. N 29  
 150. Oxley..... Y 1  
 25. Page's..... P 10  
 500. Painswick..... O 14  
 1000. Paisley..... O 8  
 600. Pakenham..... L 26  
 150. Palermo..... S 13  
 25. Palgrove..... Q 13  
 25. Palmer Rapids... K 22  
 150. Palmerston..... Q 10  
 25. Palmyra..... W 6  
 100. Paninure..... L 27  
 5. Parham..... O 24  
 3250. Paris..... T 11  
 350. Paris Station, 1 m  
 N W Paris... T 11  
 25. Parker..... Q 11  
 25. Parker's Mills... P 21  
 150. Park Head..... M 9  
 1500. Park Hill... T 6  
 70. Parma..... R 23  
 250. Parry Sound... K 14  
 500. Patterson, 2 m S  
 Richmond Hill.. R 15  
 25. Patillo..... X 2  
 25. Pattons Siding, sta  
 Gt W Ry, 5 m N E  
 Dorchester Sta. U 8  
 50. Pandash..... M 20  
 25. Paynes..... V 7  
 300. Peabody..... O 10  
 25. Peacock, 5 m W  
 Toronto..... S 15  
 25. Peepabun..... Q 11  
 100. Pefferlaw..... P 16  
 50. Pelham Union... U 14  
 1900. Pembroke..... I 24  
 70. Pendleton..... L 31  
 1000. Penetanguishene M 14  
 130. Penville..... Q 11  
 50. Pentland..... R 14  
 25. Perch..... T 4  
 Perch Station, see  
 Perch..... T 4  
 20. Perm..... P 13  
 25. Perrelton..... J 24  
 25. Perry..... V 14  
 200. Perrytown..... Q 18  
 3000. Perth..... N 26  
 25. Perth Road... P 26  
 25. Peru..... S 12  
 25. Petawawa..... I 23  
 80. Petchville..... Q 15  
 5250. Peterborough... P 19  
 150. Petersburg..... S 10

Pop. *Towns—continued.*

425	Petersburgh or Stonebridge, see Humberstone....	V	15
25.	Peterson .....	M	18
50.	Peterson's Ferry .....	Q	23
425	Petersville, 1 m fr. London .....	U	8
130.	Petherton .....	Q	10
2615.	Petrolia .....	U	5
200	Petworth .....	P	21
25.	Phelpston .....	N	14
300.	Phillipsburg West .....	S	10
100	Phillipston .....	P	22
100.	Phillipsville .....	O	27
	*Plc, Algoma Co.		
500.	Pickering .....	R	16
2361.	Pictou .....	R	23
25.	Pike Falls .....	N	27
25.	Pinedale .....	P	16
250.	Pine Grove .....	R	14
25	Pine Orchards .....	Q	15
100	Pine River .....	O	7
80.	Pinkerton .....	O	8
25.	Plukerton Station .....	O	9
60.	Pitt's Ferry .....	Q	26
25.	Pittston .....	N	29
75	Plainfield .....	P	22
60.	Plainville, 4 m W Cold Springs .....	Q	19
180	Plantagenet .....	K	31
25.	Plantagenet Sp'gs, 3 m W Plantagenet .....	K	31
900.	Plattsville .....	T	10
75	Playfair .....	M	26
	Playfair Mills, see Playfair .....	M	26
250.	Pleasant Hill .....	W	10
	Pleasant Valley, see Hillier .....	R	22
25.	Plum Hollow .....	O	27
25.	Point Alexander .....	H	23
25	Point Dover Junction .....	U	10
	Pointe au Pins, see Lake Superior map .....	X	31
1000.	Point Edward .....	T	4
25	Point Fortune, 3m E Chute au Blondeau .....	K	33
25.	Point Kaye .....	L	16
40.	Point Petre .....	S	23
25.	Point Bleh .....	M	11
25	Point Rowan .....	W	16
25	Point Shegandah .....	G	8
200.	Point Traverse .....	S	24
40.	Poland .....	M	25
150.	Pomona .....	O	11
	Pond Mills, see Wilton Grove .....	U	7
80.	Ponsonby .....	R	12
200.	Poole .....	R	9

Pop. *Towns—continued.*

25	Portage Road .....	O	17
200.	Port Albert .....	P	7
25	Port Albiro .....	W	15
25.	Port Bolster .....	O	16
25.	Port Britain .....	R	19
200.	Port Bruce .....	W	8
1300.	Port Burwell .....	W	9
209.	Port Carling .....	L	15
25.	Port Cockburn .....	K	14
1500.	Port Colborne .....	V	15
875.	Port Credit .....	S	14
1000.	Port Dalhousie .....	U	15
25.	Port Darlington .....	R	17
1100.	Port Dover .....	V	11
750.	Port Elgin .....	N	8
100.	Port Elmsley .....	N	27
25.	Porters Hill .....	R	7
70	Port Franks .....	T	6
100	Port Gibson, 1 m from Airlie .....	O	13
100.	Port Granby .....	R	18
100	Port Hoover .....	P	17
5114.	Port Hope .....	R	19
55.	Port Lambton .....	V	8
200.	Portland .....	O	26
50.	Portland .....	V	10
25	Portlock Harbor .....	C	1
80.	Port Maitland .....	V	13
200.	Port Nelson .....	T	13
1500.	Port Perry .....	Q	16
600.	Port Robinson .....	V	15
900.	Port Rowan, 21 m from Simcoe .....	V	11
100.	Port Royal .....	W	10
800.	Port Ryerse .....	V	11
25.	Port Sidney .....	K	16
130.	Port Severn .....	M	15
1702.	Portsmouth .....	Q	25
900.	Port Stanley .....	W	8
90.	Port Talbot .....	V	7
100.	Port Union .....	R	16
100.	Port Whitby .....	R	17
100.	Postsville .....	S	13
25.	Pottageville, 3 m W Schomberg .....	Q	14
25.	Powell .....	L	27
25.	Prairie Siding .....	W	4
25.	Pratts, sta. Gt. W Ry, 3 m N E Newbury .....	V	5
2617.	Prescott .....	O	29
120.	Presque Isle .....	M	10
1408.	Preston .....	S	11
25.	Prices Corners .....	N	15
300.	Priceville .....	O	11
25.	Priceville Station .....	O	11
350.	Primrose .....	P	12
600.	Prince Albert .....	Q	17
600.	Princeton .....	T	10
25.	Prinyer .....	R	24
100.	Prospect .....	M	28
100.	Protom .....	O	11
25.	Providence Bay .....	H	7
100.	Pardy .....	K	22



-continued.

ad.....O 17  
 .....P 7  
 .....W 15  
 .....O 18  
 .....R 19  
 .....W 8  
 .....L 9  
 .....L 15  
 .....K 14  
 .....V 15  
 .....S 14  
 .....U 15  
 .....R 17  
 .....V 11  
 .....N 8  
 .....N 7  
 .....R 7  
 .....T 6  
 .....1 m  
 .....O 13  
 .....R 18  
 .....P 17  
 .....R 19  
 .....V 9  
 .....O 26  
 .....V 10  
 .....C 1  
 .....V 13  
 .....T 13  
 .....Q 16  
 .....V 15  
 .....21 m  
 .....V 11  
 .....W 10  
 .....V 11  
 .....K 16  
 .....M 15  
 .....Q 25  
 .....W 8  
 .....V 7  
 .....R 16  
 .....S 13  
 .....3 m  
 .....Q 14  
 .....L 27  
 .....W 4  
 .....Gt. W  
 .....N E  
 .....V 5  
 .....O 29  
 .....M 10  
 .....S 11  
 .....N 15  
 .....O 11  
 .....P 12  
 .....Q 17  
 .....T 10  
 .....R 24  
 .....M 28  
 .....11  
 .....H 7  
 .....K 22

Pop.	Towns—continued	
25.	Pnce, 5 m E Tecumseh Station.....	W 2
25.	Purple Grove, 5 m N E Ripley.....	P 8
100.	Purpleville.....	R 14
60.	Puslinch.....	S 12
150.	Putnam.....	U 9
	Putnamville, see Putnam.....	U 9
25.	Quays.....	R 19
100.	Queensborough..	O 22
350.	Queenston.....	U 15
300.	Queenville.....	P 15
25.	Queen's Wharf.....	S 15
25.	Quinte.....	Q 22
100.	Raglan.....	Q 17
70.	Ralton.....	P 25
72.	Ralham.....	V 13
100.	Ralham Centre	V 13
500.	Rama, 1 m W Longford Mills.....	N 16
30.	Ramsay's Corners	L 29
25.	Randwick.....	P 13
80.	Ranelagh.....	U 10
100.	Rankin.....	J 24
25.	Rathburn.....	N 16
100.	Ratho.....	T 10
100.	Ravenna.....	N 12
25.	Ravenscliffe.....	K 16
25.	Ravenshoe.....	P 15
50.	Ravenswood.....	T 5
25.	Raymond.....	K 16
25.	Reaboro'.....	P 17
50.	Read.....	Q 23
25.	Redding.....	Q 12
175.	Rednersville.....	Q 22
	Red Rock, see Lake Superior Map..	K 20
	Reekie's Corners, chgd to Arnow	O 8
25.	Regan.....	N 15
25.	Relessey.....	P 13
25.	Remmington.....	O 22
25.	Renforth.....	U 12
975.	Renfrew.....	K 25
50.	Renton.....	V 11
	*Renton Station, Wentworth Co.	
25.	Renton Station.....	V 11
60.	Reynoldsville..	U 15
60.	Riceville.....	L 31
400.	Richmond, 20 m from Ottawa..	L 29
	Richmond, see Bayham.....	V 6
200.	Richmond Hill..	R 15
25.	Richmond Hill Station.....	R 15
25.	Richmond West..	M 23
100.	Richview.....	R 14
150.	Richwood.....	T 10
100.	Rideau Station.....	Q 26
500.	Ridgetown.....	W 5
25.	Ridgetown Stat'n W	5

Pop.	Towns—continued	
100.	Ridgeville.....	V 14
600.	Ridgeway.....	W 15
130.	Ringwood.....	Q 15
25.	Ripley.....	P 8
350.	Riviere Raisin...	M 33
100.	Riversdale.....	P 9
100.	Riverstown.....	Q 11
175.	Roache's Point...	P 15
150.	Roblin.....	P 23
	Roblins Mills, see Ameliasburgh	R 22
25.	Rob Roy.....	O 12
300.	Rochester, sta. Gt. W Ry, 2 m E	
	Belle River.....	X 2
25.	Rochesterville...	L 28
25.	Rockford.....	N 10
100.	Rockford.....	V 11
50.	Rockingham.....	K 22
130.	Rockland.....	K 30
25.	Rockliffe.....	G 21
	*Rockliffe, Renfrew Co.	
25.	Rocklyn.....	N 11
125.	Rockport.....	P 27
25.	Rockport Port...	P 27
60.	Rockside.....	R 13
75.	Rock Spring.....	O 27
100.	Rockton, 2 m S Westover.....	T 12
25.	Rockvillage.....	L 29
600.	Rockwood.....	S 12
70.	Rodgersville...	S 7
80.	Rodney.....	W 6
100.	Roebuck.....	N 28
30.	Rokeyby.....	N 25
	Rolph, see Ronson	V 10
25.	Romilly.....	Q 13
25.	Ronney.....	X 8
25.	Romulus, 3 m S W Westover.....	T 12
140.	Ronaldsay, 5 m W Ventry.....	P 11
850.	Rondeau.....	X 5
150.	Rondeau Harbor	X 5
25.	Ronson.....	V 10
100.	Rosa.....	Q 21
100.	Roseneath.....	Q 20
40.	Rosebank.....	T 11
150.	Rosedale.....	O 18
100.	Rosedene.....	U 14
25.	Rose Hall.....	R 22
150.	Rosemont.....	P 13
25.	Rosetta.....	M 26
	Roseville, see Montague.....	N 27
200.	Roseville.....	T 11
200.	Roslin.....	P 22
25.	Ross.....	J 25
200.	Rousseau.....	K 15
	*Ross More, Prince Edward Co.	
25.	Ross Mount, 6 m N Port Hope.....	R 19

Pop.	Towns—continued.
250	Rothsay.....Q 10
100	Rouge Hill.....R 16
25	Round Lake.....O 20
159	Round Plains.....V 11
80	Rowan Mills.....W 10
25	Roxborough WestM 31
25	Royal, 1 m S Tal-
	bottsville.....V 7
75	Rugby.....N 15
25	Russeldale.....S 8
150	Russell.....M 30
25	Russell's.....K 25
100	Rutherford.....V 4
150	Ruthven.....Y 2
75	Rutledgeville, 17m
	N W Belleville Q 22
	Ryans Corners, see
	Elginfield.....T 8
150	Ryckmans CornersT 13
200	Ryegate.....W 1
100	Rylstone.....P 21
25	Rymal.....U 13
100	Sable.....T 6
	*Sable River, Bruce
	Co.
	Sacville, see Col-
	chester Station X 1
180	Saintfiel.....P 16
25	Salem, see ThurlowP 22
800	Salem.....R 11
100	Salford.....U 9
25	Salmon Point.....S 22
70	Salmonville.....R 13
	Sandfield, chgd to
	Glen Sandfield. L 32
100	Sandford.....P 16
100	Sand Hill.....S 14
200	Sandhill.....R 13
90	Sandhurst.....Q 24
250	Sand Point.....K 26
1160	Sandwich.....W 1
	Sarawack, chgd to
	Presque Isle.....M 10
50	Sarepta.....S 7
3500	Sarnia.....T 4
25	Sarsfield.....L 30
25	Satterthwaite... N 15
2579	Saugeen.....N 8
400	Sault Ste. Marie,
	see Lake Superior
	Map.....Y 31
25	Saxony.....R 17
55	Scanlon's.....P 14
200	Scarborough.....R 15
25	Scarborough Junc.R 16
25	Schepolo.....N 16
300	Schomberg.....Q 14
50	Scone.....O 9
150	Scotch Block.....S 13
	Scotch Mills, see
	Kerry.....I 31
	*Scotia, Muskoka Co.
400	Scotland.....U 11
200	Scugog.....Q 17

Pop.	Towns—continued.
1800	Seaforth.....R 8
25	Seagrave.....P 17
25	Seaton.....R 15
25	Sebright.....N 16
500	Sebringville.....S 8
25	Seddon.....V 7
25	Seely.....K 17
150	Seelys Bay.....P 26
25	Seguin Falls.....J 15
200	Selby.....Q 23
25	Selees Corner.....O 28
33	Selkirk.....V 12
50	Selton.....W 5
100	Selwyn.....O 19
2000	Seneca.....U 12
60	Seven Bridge.....M 16
400	Shakespeare.....S 9
50	Shamrock.....K 25
50	Sham Station.....S 11
150	Shanick.....O 21
70	Shanly.....N 29
700	Shannonville.....Q 23
25	Shanty Bay, 5 m N
	E Barrie.....O 14
400	Sharon.....P 15
129	Sharpton.....Q 25
150	Shedden.....N 13
150	Sheffield.....T 11
	Shegulandah, see
	Pt. Shegulandah. G 8
80	Shelburne.....P 12
125	Sheldon.....P 13
25	Sheppardton, 3 m S
	Port Albert.....P 7
100	Sheridan.....S 14
100	Sherkston.....V 15
25	Sherwood Springs P 28
175	Shetland.....V 5
25	Shiloh.....R 12
100	Shipley.....Q 9
25	Shirley.....Q 17
180	Shrigley.....P 12
25	Siddalsville, 2 m S
	E Brecon.....T 7
25	Sidney Crossing...Q 22
100	Sierra.....M 32
25	Siftons, sta. Gt W
	Ry, 4 m S W
	London.....U 8
60	Sillsville.....Q 24
25	Siloam.....Q 16
	Silver Creek, see
	Silver Green.....R 12
100	Silver Green.....R 12
50	Silver Hill.....V 10
	*Silver Islet, Algo-
	ma Co.
25	Silver Lake.....N 18
2000	Simcoe.....V 11
25	Sinclairville.....U 13
25	Singleton's Cor-
	ners.....O 26
	Sistersville, see Ar-
	lington.....P 13

Pop.
100.
25.
50.
100.
50.
70.
25.
25.
1500
100
25.
80.
350.
25.
25.
125.
100
80.
25.
600.
25
50.
25.
100.
25.
150.
100.
60
130.
25.
50
100
25.
100.
60.
100
250.
25.
150.
25.
100.
400.
100.
25.
100.
250.
25.
100.
250.
100.
250.
200.
250.
120.

continued.

R 8  
 P 17  
 R 15  
 N 16  
 S 8  
 V 7  
 K 17  
 P 26  
 J 15  
 Q 23  
 O 28  
 V 12  
 W 5  
 O 19  
 U 12  
 M 16  
 S 9  
 K 25  
 S 11  
 O 21  
 N 29  
 Q 23  
 n N  
 O 14  
 P 15  
 Q 25  
 N 19  
 T 11  
 see  
 ah. G 8  
 P 12  
 P 13  
 m S  
 P 7  
 S 14  
 V 15  
 g P 28  
 V 5  
 R 12  
 Q 9  
 Q 17  
 P 12  
 m S  
 T 7  
 g. Q 22  
 M 32  
 W  
 W  
 U 8  
 Q 24  
 Q 16  
 see  
 R 12  
 R 12  
 V 10  
 go.  
 N 18  
 V 11  
 U 13  
 for-  
 O 26  
 Ar.  
 P 13

Pop. Towns—continued.

100. Singhampton.....O 12  
 25. Skead's Mills.....L 28  
 50. Skipness.....M 9  
 100. Skye.....L 31  
 50. Sleswick.....Q 13  
 70. Sligo.....R 13  
 25. Smirlville.....M 29  
 25. Smith.....P 19  
 1500. Smith's Falls.....N 27  
 100. Smithfield.....R 21  
 25. Smithfield.....R 14  
 Smiths Hill, see  
 Carlow.....Q 7  
 80. Smilhurst, 3 m E  
 Clifford.....P 10  
 350. Smithville.....U 14  
 25. Smithville, 3 m S  
 Holloway.....P 22  
 25. Snedden.....L 27  
 125. Solina.....R 17  
 100. Sombra.....U 3  
 80. Sonya.....P 17  
 25. Soperton.....O 27  
 600. Southampton.....N 9  
 25. South Bay.....R 23  
 50. South Cayuga.....V 13  
 25. South Denston.....P 24  
 100. South Douro.....P 20  
 25. South Dummer.. P 20  
 150. South Elmsley, 7 m  
 from Perth.....N 26  
 100. South Finch.....M 30  
 60. South Gloucester..L 29  
 130. South Gower.....N 29  
 25. South Hastings...O 22  
 50. South La Graisse..L 33  
 100. South Lake.....P 26  
 25. South Lonsdale..Q 23  
 100. South March.....L 23  
 60. South Middleton..V 10  
 100. South Monaghan..Q 19  
 250. South Mountain..N 29  
 25. Southwold.....V 7  
 150. South Zorra.....T 9  
 25. Spaffordton.....P 25  
 100. Spanish River.....E 7  
 400. Sparta.....V 8  
 100. Speedie, 1-1.2 m  
 from Leith.....M 10  
 25. Speedside.....R 12  
 100. Spence.....J 15  
 250. Spencerville.....N 29  
 25. Speyside.....S 13  
 100. Spring Harbour...W 10  
 150. Springbank.....U 6  
 75. Spring Brook.....P 22  
 350. Springfield.....V 9  
 Springfield, see  
 Credit.....S 14  
 200. Springfield.....U 10  
 250. Spring Hill.....Q 14  
 Springtown, see  
 Bagot.....L 25  
 120. Springvale.....U 12

Pop. Towns—continued.

150. Springville.....P 18  
 25. St. Abners.....U 11  
 150. St. Agatha.....S 10  
 25. St. Albaus.....Q 21  
 160. St. Andrews.....M 31  
 25. St. Anne.....T 13  
 200. St. Ann's.....U 14  
 1100. St. Catharines...U 15  
 St. Catharines West,  
 see St. Catha-  
 rines.....U 15  
 25. St. Clair, sta. Gt W  
 Ry, 3 m W Stony  
 Point.....X 8  
 25. St. Claire Junction V 8  
 200. St. Clements.....S 10  
 270. St. Davids.....U 15  
 25. St. Davids Station U 15  
 400. St. Eugene.....L 33  
 400. St. George.....T 11  
 25. St. George's Sta-  
 tion.....T 11  
 200. St. Helens.....P 7  
 150. St. Ives.....T 8  
 450. St. Jacobs.....S 10  
 25. St. James' Park, 1  
 m W London...U 8  
 St. Johns, see Arva U 7  
 200. St. John West...U 15  
 25. St. Joseph.....D 1  
 25. St. Lawrence, 7 m  
 S E Kingston...Q 25  
 4500. St. Marys.....T 8  
 100. St. Ola.....N 22  
 25. St. Patricks.....M 13  
 25. St. Pauls.....S 8  
 St. Pauls Station,  
 see St. Pauls...S 8  
 250. St. Raphael West..M 32  
 2500. St. Thomas.....V 8  
 St. Thomas West,  
 see St. Thomas..V 8  
 25. St. Vincent.....N 11  
 150. St. Williams.....W 11  
 125. Staffa.....S 8  
 100. Stafford.....J 24  
 30. Staffordville...Q 22  
 800. Stamford.....U 15  
 200. Stanley's Mills...R 14  
 25. Stanleydale, 5 m E  
 Ravenscliffe...K 16  
 100. Stanton.....P 13  
 Starks Corners, see  
 Burgoyne.....N 9  
 \*Starrat, Muskoka  
 Co.  
 1000. Stayner.....O 13  
 25. Steele's.....O 15  
 130. Stella.....Q 24  
 100. Stevensville...V 15  
 250. Stewartstown...S 13  
 150. Stewartville...K 26  
 130. Stirling.....P 22  
 150. Stirton.....R 10

Pop.	Towns—continued.
90.	Stisted.....W 10
	Stitt's Corners, see
	Stittsville.....L 23
100.	Stittsville.....L 23
120	Stockdale.....Q 21
200.	Stoco.....P 23
25	Stockwell West...P 27
25	Stoneleigh.....L 17
200	Stony Creek.....T 13
25.	Stony Creek Sta- tion.....T 13
25.	Stony Lake.....O 20
500.	Stony Point.....X 3
100.	Story's.....N 27
800.	Stouffville.....Q 16
100.	Stowe, 4 m from Monkton.....R 8
150.	Strabane.....T 12
400.	Stratfordville.....V 9
25.	Strathairn.....N 11
4313.	Stratford.....S 9
150.	Strathallan.....T 9
150.	Strathburn.....V 6
25.	Strathglass.....M 31
8232.	Strathroy.....U 6
1000.	Streetsville.....S 14
100.	Stroinness.....V 14
25.	Stroud.....O 14
50.	Strausburgh.....S 10
	Suckertown, see
	Silver Hill.....V 10
170.	Sullivan.....N 10
75.	Summerstown Sta- tion.....M 32
100.	Summerville.....S 14
25.	Summit.....Q 19
25.	Summit.....Q 18
80	Sunbury.....P 25
100.	Sunderland.....P 17
100	Sunnidale.....O 13
25	Sunnidale Station O 13
25.	Sunnyside.....S 14
	*Sunshine, Huron Co.
25.	Super's.....R 12
80.	Sutherlands Cor- ners.....V 5
300.	Sutton.....P 15
200.	Sweaburg.....U 10
60.	Sweet's Corners...P 26
250.	Switzerville.....Q 24
160.	Sydenham.....T 12
450.	Sydenham.....U 10
80.	Sydenham Mills...M 11
80	Syl an.....T 6
100.	Talbotville Royal. V 7
500.	Tamworth.....P 24
100.	Tapleytown.....U 13
450	Tara.....N 9
50.	Tarbert.....Q 11
100.	Tatlock.....M 26
25	Taunton.....R 17
500.	Tavistock.....S 10
25.	Taylor.....W 6

Pop.	Towns—continued.
100.	Tay Port.....M 15
25.	Tayside.....L 31
200.	Tecumseh Station W 2
	Tecumseh, see Te- cumseh Station.W 2
450.	Tecawater.....P 8
200.	Teeterville.....U 11
25	Tekunmah.....H 7
150.	Telfer.....T 7
25.	Telverton.....P 18
25.	Temperanceville. Q 15
150.	Tempo.....U 7
25	Tennyson.....M 27
25	Teskeyville.....M 27
275.	Teston.....R 14
100.	Tevlotdale.....Q 10
500.	Thamesford.....U 8
500.	Thamesville.....W 5
100.	Thanet.....N 21
	*Thedford, Lamb- ton Co.
	*The Grange, Sim- coe Co.
25.	Thessalon.....D 3
25.	Thirty Mile Creek.U 14
200.	Thistleton.....R 14
200.	Thomasburg.....P 22
80	Thomasville.....Q 14
75.	Thompsonville...P 13
400.	Thornbury.....N 12
150.	Thorndale.....T 8
25	Thornhurst.....V 4
600	Thornhill.....R 15
25.	Thornhill Station.R 15
100.	Thornton.....P 14
2500.	Thorold.....U 15
25	Thorpville.....R 11
25.	Thunder Bay, see Map of Lake Su- perior.....I 33
120.	Thurlow.....P 22
25.	Tichborne.....O 25
25	Tillbury.....X 3
150.	Tilbury East.....X 4
1500.	Tilsonburg.....V 9
25	Tilsonburg Station U 9
25	Tilton.....P 21
	Tincap Corners, see Eversley.....Q 15
150.	Tintin Corners...Q 14
25.	Tintern.....U 14
250.	Tiverton.....O 8
	Todmerdon West, see Doncaster...S 15
300.	Toledo.....O 27
90.	Tollendale, 1 m from Allendale.O 14
280.	Topping, 2 m S Musselburgh...S 9
50.	Tormore.....R 14
60000.	Toronto.....S 15
25.	Toronto Junction. T 13
25.	Torrance.....L 15
150.	Tottenham.....Q 14

Pop.
25
25
100
25
50.
50.
90.
25.
2000.
25.
25.
150.
100.
150.
150.
100.
250
25.
25.
150
600.
100.
100.
25.
25.
160.
300.
80
250.
70.
50.
25.
25.
100
25.
25.
25.
90.
350.
25.
250.
50.
75.
25.
185.
200.
25.
350.
100.
1500.
175.
25.
100.
75.
25.
25.
25.
100.
25.
100.
25.
700.
100.

## Towns—continued.

Port.....	M	15
de.....	L	31
nesh Station W		2
nash, see Te-		
nsh Station, W		2
water.....	P	8
rville.....	U	11
nmah.....	H	7
.....	T	7
rton.....	P	18
eranceville..	Q	15
o.....	U	7
son.....	M	27
yville.....	M	27
l.....	R	14
dale.....	Q	10
esford.....	U	8
sville.....	W	5
t.....	N	21
ord, Lamb-		
Co.....		
range, Shm-		
Co.....		
lon.....	D	3
mile Creek..	U	14
etown.....	R	14
sburg.....	P	22
sville.....	Q	14
sonville.....	P	13
bury.....	N	12
dale.....	T	8
ghurst.....	V	4
hill.....	R	15
hill Station..	R	14
on.....	P	14
d.....	U	15
ille.....	R	11
er Bay, see		
of Lake Su-		
r.....	I	22
r.....	P	23
wne.....	O	25
y.....	X	3
y East.....	X	4
burg.....	V	9
burg Station U		9
.....	P	21
Corners, see		
ley.....	Q	15
Corners.....	Q	14
.....	U	14
n.....	O	8
ndon West,		
ncaster.....	S	15
.....	O	27
ale, 1 m		
Allendale..	O	14
g, 2 m S		
lburgh.....	S	9
e.....	R	14
e.....	S	15
o Junction.T		13
ce.....	L	15
am.....	Q	14

## Pop. Towns—continued.

25	Townsend Station..	V	11
25	Townsend Centre,		
	2m W Villa Nova	V	11
100.	Trafalgar.....	S	13
25	Tramore.....	J	23
50.	Travertown.....	O	10
50.	Travewell.....	K	31
90.	Trecastle.....	Q	10
25.	Trent Bridge.....	P	21
2000.	Trenton.....	Q	21
25.	Trenton Station..	Q	21
25	Trout Lake.....	J	14
150.	Trowbridge.....	Q	9
100.	Troy.....	T	12
150.	Troy, 3 m W		
	Morpeth.....	X	5
150.	Trudell.....	X	3
100.	Tuam.....	Q	14
250.	Tullamore.....	R	13
25.	Turner's Station..	N	8
25	Turtle Lake.....	K	15
150	Tuscarora.....	U	12
600.	Tweed.....	P	22
100.	Tweedside.....	U	13
100.	Tyendinaga.....	Q	23
25.	Tyneside.....	U	13
25.	Tyneside.....	U	12
160.	Tyconnell.....	W	7
300	Tyrone.....	Q	17
80	Tyrell.....	V	11
250.	Udora.....	P	16
70.	Uffington.....	M	16
50.	Uford.....	L	16
25	Uthoff.....	N	15
25	Ullin.....	E	4
100	Ullswater.....	K	15
25.	Ulyatt.....	O	11
25.	Ulster.....	P	8
25.	Umfraville.....	M	21
90.	Underwood.....	N	8
350.	Union.....	V	8
25.	Union Hill.....	T	8
250.	Unionville.....	R	15
50.	Uphill.....	N	17
75.	Upper Fonthill, 1 m		
	from Fonthill..	V	15
25.	Upper Hornby.....	S	13
185.	Upter Grove.....	N	16
200.	Utica.....	Q	16
25.	Utopia.....	O	14
350.	Utterson.....	K	16
100.	Uttoxeter.....	T	5
1500.	Uxbridge.....	Q	16
175.	Vachell.....	P	16
25.	Valentia.....	P	17
100.	Valentyne.....	P	16
75.	Valetta.....	X	3
25.	Vanatter.....	Q	12
25	Vanbrugh.....	K	23
25.	Vanburg.....	Q	22
100.	Vandecar.....	U	10
25.	Vandeleur.....	O	11
700.	Van Kleek Hill..	L	52
100.	Vanneck.....	U	7

## Pop. Towns—continued.

175.	Vanvlack.....	N	13
200.	Varna.....	R	7
100.	Varney.....	P	10
50.	Vasey.....	N	14
80.	Veighton.....	L	30
100.	Velliore.....	R	14
60.	Vennachar.....	M	23
150.	Ventrnor.....	N	29
25	Ventry.....	P	11
25	Verdun.....	P	7
25	Vereker.....	X	1
30.	Vernon.....	M	29
100.	Vernonville.....	Q	20
40.	Verona.....	P	24
175.	Verschoyle.....	U	9
30	Vesta.....	O	9
50.	Victoria.....	R	13
150	Victoria.....	V	16
25.	Victoriaburgh.....	S	10
80.	Victoria Corners..	P	16
25.	Victoria Harbor..	M	14
100	Victoria Road.....	N	17
200.	Victoria Square..	Q	15
1000.	Vienna.....	W	9
200.	Vigo.....	O	14
100.	Villa Nova.....	V	11
40.	Village of St. Mary	G	31
75.	Villiers.....	P	20
175.	Vine.....	O	14
200	Violet.....	O	24
100.	Virgil.....	U	15
25.	Virginia.....	P	16
6:0.	Victoria.....	V	11
25.	Vivian.....	Q	15
25.	Vosburg, sta. Gt.		
	W Ry, 4 m W		
	Lewisville.....	W	4
250.	Vroomanton.....	P	16
25	Vyner.....	T	4
40.	Waddles Mill.....	H	34
25.	Wagram.....	Q	10
25.	Wainfleet Centre..	V	14
25.	Waldemar.....	Q	12
80.	Wales.....	N	31
25.	Walker's Point.....	L	15
1200	Walkerton.....	P	9
200.	Walkerville.....	W	1
50.	Wallace.....	Q	10
600.	Wallaceburgh.....	V	4
25.	Wallace Mine.....	F	8
400.	Wallacetown.....	V	7
100.	Wallbridge.....	Q	22
100.	Wallenstein.....	R	10
25	Walmer.....	T	9
150.	Walmer.....	Q	11
25.	Walnut, 4 m S Wat-		
	ford.....	U	5
25.	Walpole Island..	W	3
	Walsingham Cen-		
	tre, see Pleasant		
	Hill.....	W	10
150.	Walsh.....	V	11
100.	Walters Falls.....	N	11
125.	Walton.....	R	8

Pop	Towns—continued.
120.	Wanstead.....U 5
100.	Warburton.....P 27
800.	Wardville.....V 6
25.	Warcham.....O 11
800.	Warkworth.....Q 20
120.	Warminster.....N 15
25.	Warner.....U 14
150.	Warsaw.....P 20
200.	Wartburg.....S 9
300.	Warwick.....T 5
180.	Washago.....M 16
25.	Washburn.....P 26
130.	Washington.....T 10
1000.	Waterdown.....T 13
25.	Waterdown Sta- tion.....T 13
900.	Waterford.....V 11
2000.	Waterloo.....S 10
100.	Water Mill, near South Lonsdale. Q 23
400.	Watford.....U 5
100.	Watson's Corners M 26
25.	Waubamick.....J 14
25.	Waubashene.....M 15
25.	Waubuno.....U 4
25.	Waupoos.....R 23
150.	Waverly.....N 14
	Waverly, see Travertown.....O 10
	*Wellesburg, Woolwich Co.
25.	Welch's Station N 27
100.	Welcome.....R 18
1500.	Welland C. H.....V 15
25.	Welland Canal...V 15
25.	Welland Junction V 15
300.	Welland Port...V 14
500.	Wellealey.....S 10
760.	Wellington.....R 22
25.	Wellington.....M 28
700.	Wellington Square T 13
100.	Wellman's Corners P 21
90.	Wendover.....K 31
200.	Wesleyville.....R 18
30.	West Arran.....N 9
100.	Westbrook.....Q 24
80.	Westvelt Cor- ners.....R 13
50.	West Esaa.....P 13
25.	Westfield.....O 7
300.	West Flamboro. T 12
50.	West Huntingdon P 22
90.	West Kuntley...L 27
150.	West Lake.....R 23
250.	West Lorne.....W 6
50.	West Magdala...V 7
	West McGillivray see McGillivray. T 7
170.	Westmeath.....I 25
200.	Westminister.....U 8
	West Monkton, see Monkton.....R 9
100.	West Montrose...R 11
1300.	Weston.....R 14

Pop.	Towns—continued.
25.	Weston.....R 15
100.	West Osgoode...M 29
100.	Westover.....T 12
400.	Westport.....O 26
260.	West Winchester M 30
100.	Westwood.....P 20
150.	Wexford.....R 15
180.	Whalen.....T 7
25.	Whaler's Corners. S 13
100.	Wheatley.....Y 2
3500.	Whitby.....R 16
25.	White.....L 26
25.	White Church...P 8
75.	Whitehurst, 1 m S Wolford.....O 27
200.	White Lake.....L 26
130.	White Rose.....Q 15
25.	White's Station..V 8
250.	Whitevale.....R 16
150.	Whitfield.....P 12
25.	Whittington....Q 12
200.	Wharton.....M 9
125.	Wick.....P 16
100.	Wicklow.....R 20
500.	Widder Station..T 6
100.	Widder, 2 m from Widder Station. T 6
110.	Wilfrid.....P 16
50.	Wilkesport.....V 4
50.	Wilkie's Corners, 2 m from Fingal. V 7
200.	Willetsholme...P 26
170.	Williamsburg...Q 19
100.	Williamsburgh...S 11
150.	Williamsford...N 10
	Williamsford Sta- tion, see Willi- amsford...N 10
450.	Williamstown...M 32
25.	Willacroft.....N 9
25.	Willow Creek...O 8
150.	Willowdale.....R 15
80.	Willow Grove...U 12
300.	Wilmur.....P 25
25.	Wilson, 7 m S W Courtland.....V 10
200.	Wilton.....Q 24
25.	Wilton Grove...U 7
70.	Winchelsea...S 7
400.	Winchester.....N 30
100.	Winchester Spr'gs. 5m S Winchester N 30
60.	Windermere....K 15
100.	Windham Centre, 2 m S Teeter- ville.....U 11
25.	Windham.....V 10
4253.	Windsor.....W 1
50.	Winfield.....R 10
700.	Wingham.....P 8
10	Winona.....T 13
150.	Winterbourne...R 11
25.	Winthrop.....R 8
25.	Wisbeach.....T 6

Pop.
50
2737
25
25
250
100
100
160
50
100
25
70
150
25
5000
400
25
120
600
150
150
500

continued.

R 15  
M 29  
O 12  
T 26  
er M 30  
P 20  
R 15  
T 7  
rs. S 13  
Y 2  
R 16  
L 26  
P 8  
m S  
O 27  
L 26  
Q 15  
V 8  
R 16  
P 12  
Q 12  
M 9  
P 16  
R 26  
T 6  
om  
on T 6  
P 16  
V 4  
rs. 2  
V 7  
P 26  
Q 19  
S 11  
N 10  
sta-  
lli-  
N 10  
M 32  
N 9  
O 8  
R 15  
U 12  
P 25  
W  
V 10  
Q 24  
U 7  
S 7  
N 30  
gs.  
er N 30  
K 15  
re,  
er  
U 11  
V 10  
W 1  
R 10  
P 8  
T 13  
R 11  
R 8  
T 6

Pop.	Towns—continued.		
50.	Woburn .....	R	15
2737.	Wolfe Island ....	Q	25
25.	Welford .....	O	27
25.	Wolseley .....	M	10
250.	Wolverton .....	T	10
1001.	Woodbridge .....	R	14
100.	Woodburn .....	U	13
160.	Woodbury .....	U	10
50.	Woodford .....	M	11
100.	Woodham .....	S	7
23.	Woodhill .....	R	14
70.	Woodlands .....	N	31
150.	Woodslee .....	X	2
25.	Woodslee Station	X	2
5000.	Woodstock .....	T	9
400.	Woodville .....	O	17
25.	Woodville Junc-		
	tion .....	O	17
120.	Wooler .....	Q	21
600.	Wroxeter .....	Q	9
150.	Wyandott .....	R	10
150.	Wye Bridge .....	N	14
500.	Wyoming .....	U	5

Pop.	Towns—continued.		
30.	Wyton .....	U	3
400.	Yarker .....	P	21
25.	Yarmouth .....	V	3
160.	Yarmouth Centre	V	8
25.	Yatton .....	R	11
25.	Yelverton .....	Q	17
25.	Yeovil .....	P	11
25.	Yong Mills .....	P	29
400.	York .....	U	12
350.	York Mills .....	R	15
125.	York River .....	M	21
2303.	Yorkville .....	S	15
100.	Young's Point .....	O	19
	*Youngville, Ox-		
	ford Co.		
25.	Zealand .....	N	25
300.	Zephyr .....	P	15
100.	Zimmerman .....	S	13
25.	Zion .....	R	18
25.	Ziaka .....	L	16
60.	Zetland .....	P	8
200.	Zurich .....	S	7

**RAND, McNALLY & CO.'S**  
 SERIES OF  
**INDEXED POCKET MAPS,**

Of which this Map and Compilation is a sample.

Sent by mail, postpaid, Card Board binding, upon receipt of following prices :

Alabama.....	\$ 50
Arizona Territory.....	50
Arkansas and Missouri, in one book.....	50
California and Nevada, in one book.....	75
Colorado.....	50
Connecticut, Rhode Island and Massachusetts, one book.....	50
Dakota Territory.....	50
Delaware and Maryland, in one book.....	50
Florida.....	50
Georgia.....	50
Idaho Territory.....	50
Illinois.....	50
Indiana.....	50
Indian Territory and Texas, in one book.....	75
Iowa.....	50
Kansas.....	50
Kentucky and Tennessee, in one book.....	50
Louisiana.....	50
Maine.....	50
Maryland and Delaware, in one book.....	50
Massachusetts, Rhode Island and Connecticut, one book.....	50
Michigan.....	50
Minnesota.....	50
Mississippi.....	50
Missouri and Arkansas, in one book.....	50
Montana Territory.....	50
Nebraska.....	50
Nevada and California, in one book.....	75
New Hampshire and Vermont, in one book.....	50
New Jersey.....	50
New Mexico Territory.....	50
New York.....	75
North Carolina and South Carolina, in one book.....	50
Nova Scotia, New Brunswick, & Prince Edward Island.....	75
Ohio.....	50
Ontario, Province of Canada.....	75
Oregon.....	50
Pennsylvania.....	50
Quebec, Province of Canada.....	50
Rhode Island, Massachusetts and Connecticut, one book.....	50
South Carolina and North Carolina, in one book.....	50
Tennessee and Kentucky, in one book.....	50
Texas and Indian Territory, in one book.....	75
Utah Territory.....	50
Vermont and New Hampshire, in one book.....	50
Virginia and West Virginia, in one book.....	50
Washington Territory.....	50
West Virginia and Virginia, in one book.....	50
Wisconsin.....	50
Wyoming Territory.....	50

Bound in cloth, 10 cents additional. Discount to the trade.  
 Agents wanted in every State and Territory in the United States. Address,

**RAND, McNALLY & CO., 77 & 79 Madison St., Chicago, Ill.**



APS,

receipt of

... \$ 50

... 50

... 50

... 75

... 50

... book 50

... 50

... 50

... 50

... 50

... 50

... 50

... 75

... 50

... 50

... 50

... 50

... 50

... 50

... ok 50

... 50

... 50

... 50

... 50

... 50

... 75

... 50

... 50

... 50

... 75

... 50

... 75

... d. 50

... 75

... 50

... 50

... 50

... book 50

... 50

... 50

... 75

... 50

... 50

... 50

... 50

... 50

... 50

trade.

United

Chicago, Ill.

**"THE GAZETTE,"**  
**MONTREAL,**

Has a Circulation more than Double that of  
 any other Morning Newspaper published  
 in the Province.

---

**THE SHIPPING NEWS.**

--- THE ---

**DAILY FINANCIAL REVIEW,**

--- AND THE ---

*Reports of the Markets,*

OF ALL KINDS.

Are made up with great care, and are in every  
 respect reliable.

---

No Merchant, Banker, or other Business Man,

Can afford to be without

**"THE GAZETTE."**

---

DAILY, Per Annum, - - - \$6.00

WEEKLY EDITION, Per Annum, \$1.00

ADDRESS,

**T. & R. WHITE,**

**MONTREAL.**

# SEND

Your address and you will receive  
(free) by return of mail a specimen  
copy of

## THE WEEKLY GAZETTE,

the best and cheapest weekly news-  
paper published

### 56 Columns

of reading matter every week for a  
year, for

## *ONE DOLLAR.*

ADDRESS,

T. & R. WHITE,

"The Gazette,"

**MONTREAL.**

ceive  
cimen

E,

news-

for a

e,"

EAL.



West from Greenwich.







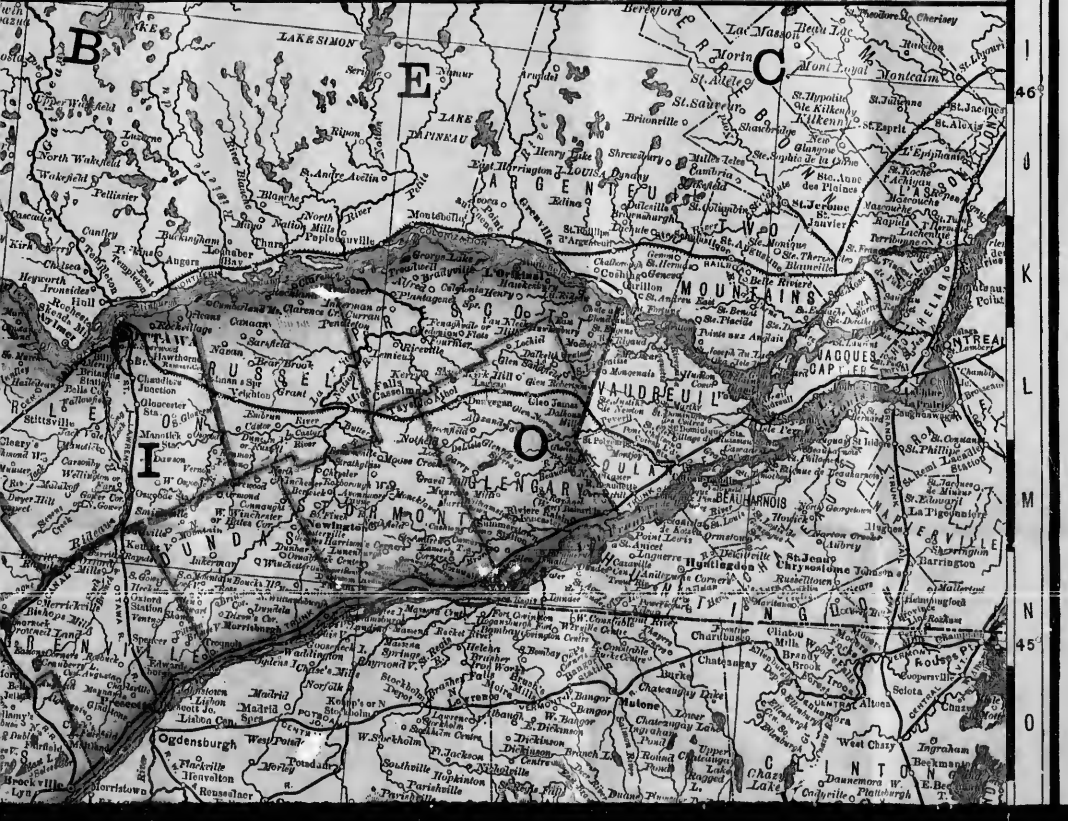
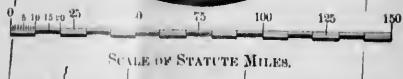




28 76 29 30 31 75 32 33 34 35 74 36

88 Longitude West, 97 from Greenwich, 86 85 84 83 82 81 80

# NORTH WESTERN PART OF ONTARIO

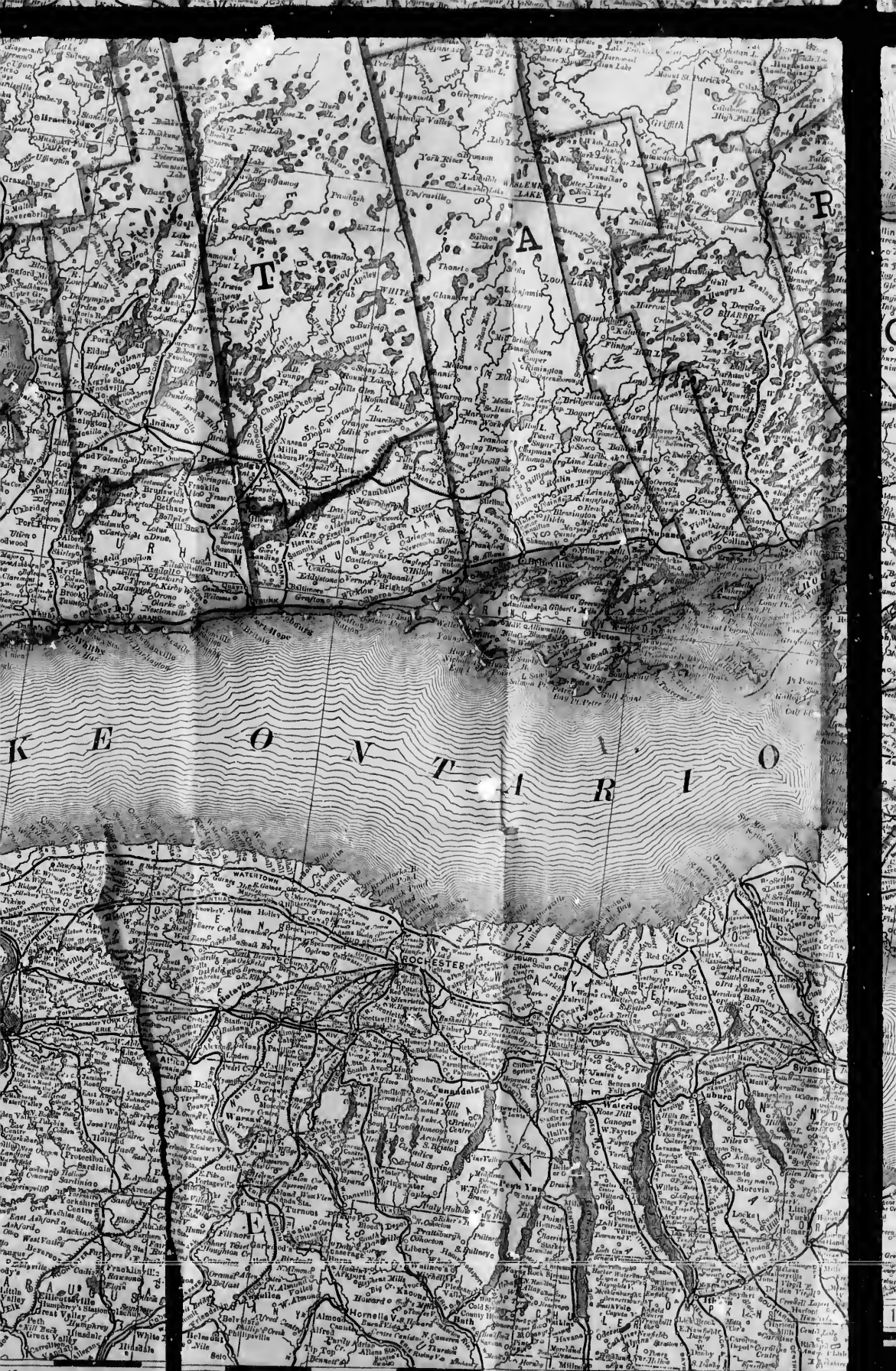


Longitude West, 9 from Washington, 8°





7 4° 8 9 10 11 3° 12 13 14 15° 16





12 13 14 15° 16 17 18 19



120 121 122 123 124 125 126 127 128 129



**NEW RAILROAD AND COUNTY MAP**

TO ACCOMPANY THE GAZETTEER,

—OF THE—

**Province of Ontario**

RAND, McNALLY & CO.'S SERIES.

COMPILED FROM THE

**LATEST GOVERNMENT SURVEYS**

AND DRAWN TO AN ACCURATE SCALE.



Longitude East from Washington.

28 29 30 31 32 33 34 35 36

M  
N  
45  
O  
P  
Q  
R  
S  
44  
T  
U  
V  
W  
X  
43  
Y  
Z