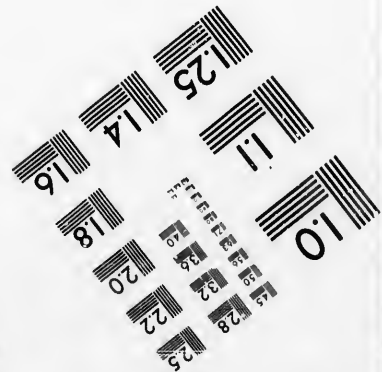
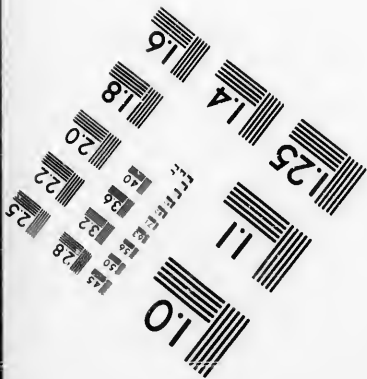
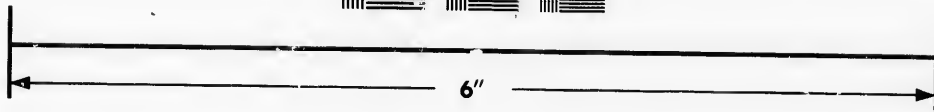
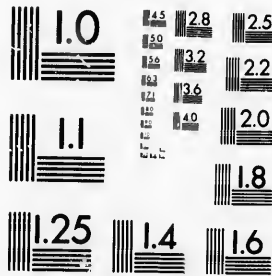


IMAGE EVALUATION
TEST TARGET (MT-3)



Photographic
Sciences
Corporation

23 WEST MAIN STREET
WEBSTER, N.Y. 14580
(716) 872-4503

**CIHM/ICMH
Microfiche
Series.**

**CIHM/ICMH
Collection de
microfiches.**



Canadian Institute for Historical Microreproductions / Institut canadien de microreproductions historiques

© 1986

Technical and Bibliographic Notes/Notes techniques et bibliographiques

The Institute has attempted to obtain the best original copy available for filming. Features of this copy which may be bibliographically unique, which may alter any of the images in the reproduction, or which may significantly change the usual method of filming, are checked below.

L'Institut a microfilmé le meilleur exemplaire qu'il lui a été possible de se procurer. Les détails de cet exemplaire qui sont peut-être uniques du point de vue bibliographique, qui peuvent modifier une image reproduite, ou qui peuvent exiger une modification dans la méthode normale de filmage sont indiqués ci-dessous.

Coloured covers/
Couverture de couleur

Covers damaged/
Couverture endommagée

Covers restored and/or laminated/
Couverture restaurée et/ou pelliculée

Cover title missing/
Le titre de couverture manque

Coloured maps/
Cartes géographiques en couleur

Coloured ink (i.e. other than blue or black)/
Encre de couleur (i.e. autre que bleue ou noire)

Coloured plates and/or illustrations/
Planches et/ou illustrations en couleur

Bound with other material/
Relié avec d'autres documents

Tight binding may cause shadows or distortion along interior margin/
La reliure serrée peut causer de l'ombre ou de la distorsion le long de la marge intérieure

Blank leaves added during restoration may appear within the text. Whenever possible, these have been omitted from filming/
Il se peut que certaines pages blanches ajoutées lors d'une restauration apparaissent dans le texte, mais, lorsque cela était possible, ces pages n'ont pas été filmées.

Additional comments:/
Commentaires supplémentaires:

Coloured pages/
Pages de couleur

Pages damaged/
Pages endommagées

Pages restored and/or laminated/
Pages restaurées et/ou pelliculées

Pages discoloured, stained or foxed/
Pages décolorées, tachetées ou piquées

Pages detached/
Pages détachées

Showthrough/
Transparence

Quality of print varies/
Qualité inégale de l'impression

Includes supplementary material/
Comprend du matériel supplémentaire

Only edition available/
Seule édition disponible

Pages wholly or partially obscured by errata slips, tissues, etc., have been refilmed to ensure the best possible image/
Les pages totalement ou partiellement obscurcies par un feuillet d'errata, une pelure, etc., ont été filmées à nouveau de façon à obtenir la meilleure image possible.

This item is filmed at the reduction ratio checked below/
Ce document est filmé au taux de réduction indiqué ci-dessous.

10X	14X	18X	22X	26X	30X
<input type="checkbox"/>	<input type="checkbox"/>	<input type="checkbox"/>	<input checked="" type="checkbox"/>	<input type="checkbox"/>	<input type="checkbox"/>
12X	16X	20X	24X	28X	32X

The copy filmed here has been reproduced thanks to the generosity of:

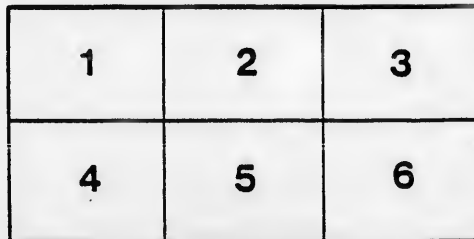
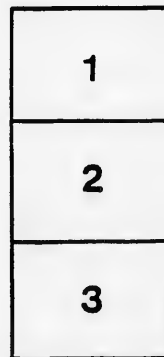
Archives of Ontario
Toronto

The images appearing here are the best quality possible considering the condition and legibility of the original copy and in keeping with the filming contract specifications.

Original copies in printed paper covers are filmed beginning with the front cover and ending on the last page with a printed or illustrated impression, or the back cover when appropriate. All other original copies are filmed beginning on the first page with a printed or illustrated impression, and ending on the last page with a printed or illustrated impression.

The last recorded frame on each microfiche shall contain the symbol \rightarrow (meaning "CONTINUED"), or the symbol ∇ (meaning "END"), whichever applies.

Maps, plates, charts, etc., may be filmed at different reduction ratios. Those too large to be entirely included in one exposure are filmed beginning in the upper left hand corner, left to right and top to bottom, as many frames as required. The following diagrams illustrate the method:



L'exemplaire filmé fut reproduit grâce à la générosité de:

Archives of Ontario
Toronto

Les images suivantes ont été reproduites avec le plus grand soin, compte tenu de la condition et de la netteté de l'exemplaire filmé, et en conformité avec les conditions du contrat de filmage.

Les exemplaires originaux dont la couverture en papier est imprimée sont filmés en commençant par le premier plat et en terminant soit par la dernière page qui comporte une empreinte d'impression ou d'illustration, soit par le second plat, selon le cas. Tous les autres exemplaires originaux sont filmés en commençant par la première page qui comporte une empreinte d'impression ou d'illustration et en terminant par la dernière page qui comporte une telle empreinte.

Un des symboles suivants apparaîtra sur la dernière image de chaque microfiche, selon le cas: le symbole \rightarrow signifie "A SUIVRE", le symbole ∇ signifie "FIN".

Les cartes, planches, tableaux, etc., peuvent être filmés à des taux de réduction différents. Lorsque le document est trop grand pour être reproduit en un seul cliché, il est filmé à partir de l'angle supérieur gauche, de gauche à droite, et de haut en bas, en prenant le nombre d'images nécessaire. Les diagrammes suivants illustrent la méthode.

ails
du
odifier
une
mage

rata
o

elure,
à

32X



List of Voters

—OF THE—

TOWNSHIP OF

South Walsingham

FOR

The Year 1896.

— 0 —

PRINTED AT THE REFORMER PRINTING SHOP,
SIMCOE, ONT.







List of Voters

—OF THE—

TOWNSHIP OF

South Walsingham

FOR

The Year 1896.

—o—

PRINTED AT THE REFORMER PRINTING SHOP,
SIMCOE, ONT.

Schedule of Post Offices.

1	St. Williams.	19	Caledonia.
2	Port Rowan.	20	Toronto.
3	Port Royal.	21	Kingsmill.
4	Erie View.	22	Jaryis.
5	Rowan Mills.	23	Dixon, Illinois, U.S.
6	Spring Arbor.	24	Tawas, Mich., U.S.
7	Walsingham Centre.	25	Vienna.
8	Carholme.	26	Aylmer.
9	Langton.	27	Falkland.
10	Cultus.	28	Leamington.
11	Clear Creek.	29	Pt. Ryerse.
12	Simcoe.	30	Brantford.
13	Marston.	31	Eastland.
14	Tain.	32	Hamilton.
15	Forestville.	33	Tilbury.
16	Vittoria.	34	Dutton.
17	Tilsonburg.	35	Woodstuck.
18	Otterville.	36	Normandale.

VOTERS' LIST, 1896.

Municipality of the Township of South Walsingham,
County of Norfolk.

POLLING SUB-DIVISION NO. 1.

Comprising Lots 1, 2, 3, 4, 5, 6, in Concessions B, A, 1, 2, 3, 4, and the Gore.
Polling Place—School House No. 2.

PART I.—List of persons entitled to vote at both
Municipal Elections and Elections to the Leg-
islative Assembly.

No. on Roll	Name.	Jurors	Lot	Con.	F. T. H. & M. F.	P.O.
16	Armour, William	J	2	4	F M F	10
35	Ashford, John	J	2	3	F & O P	10
36	Ashford, John Jr.	J	1	3	F M F	10
34	Ashford, Chas.		2	3	F & O P	11
9	Abbott, Benjamin	J	6	B	F M F	3
6	Abbott, Matland	J	6	B	F & O P	3
7	Abbott, John	J	6	B	F M F	3
3	Abbott, Peter	J	6	B	F M F	3
4	Abbott, Ernest	J	6	B	F M F	3
264	Anger, Peter		4	4	F M F	6
5	Abbott, Hedly		6	B	F M F	3
11	Abbott, Ai.		2	2	F M F	4
113	Benedict, Daniel	J	6	2	T M F	10
116	Benedict, John		1	4	F M F	10
114	Blumenstien, John	J	1	3	F M F	10
65	Biddle, John		5	2	F M F	5
67	Biddle, Daniel	J	4-5	2	F M F	5
68	Biddle, Edward	J	4-5	2	F M F	5
69	Biddle, Chas.	J	4-5	2	F M F	5
63	Bressaux, Sylvester	J	2	2	F M F	5
62	Bressaux, Nelson	J	2	3	F s M F	5
60	Butcher, David	J	5	1 O P	F M F	5
61	Butcher, Lundy	J	5	1 O P	F M F	5
62	Butcher, Frank	J	5	1 O P	F M F	5
46	Buchner, Ozias		2	A	F M F	11
47	Buchner, George	J	2	A	F M F	11
136	Chamberlain, Robert	J	1	1	F M F	11
133	Cadogan, Alfred	J	1	A	F M F	11
130	Countryman, Albert	J	5	3	F M F	1
139	Domery, John		1	4	F M F	10
184	Dedrick, J. W.		3	A	F M F	5
185	Dedrick, Abram		1	A	F M F	5
201	Drinkwater, Jas.		1	2	T M F	5
192	Davidson, T. H.		6	6	F M F	7

VOTERS' LIST, 1896.

No. on Roll	Name	Years	Lot	Con.	F T H & M F	P. O.
265	Furry, W. E.	J	6	4	F M F	6
263	Furry, Melvin		4	4	F M F	10
266	Furry, Abram		3	4	F M F	10
267	Furry, Samuel	J	3	4	F M F	10
268	Furry, Colin		3	4	F M F	10
216	Foster, J C	J	5	A	T M F	4
709	Furry, Eli	J	3	4	F M F	10
219	Franklin, Austin	J	1	1	"	11
238	Fick, Isaac		2	1	"	11
218	Foster, Chas D	J	2	B	"	4
217	Foster, Frank L	J	5	B	"	4
215	Foster, W E	J	6	B	"	4
212	Foster, Isaac		6	A	"	4
213	Foster, Elgin	J	6	A	"	4
209	Foster, Edward		6	A	"	4
210	Foster, Isaiah	J	6	A	"	4
225	Foster, Nelson	J	5.6	B	"	4
226	Foster, Freeman	J	5.6	B	"	4
221	Franklin, Salem	J	1	B	"	11
222	Foster, Elias	J	5	B	"	4
223	Foster G Emerson	J	5	B	"	4
224	Foster, Chas M	J	5	B	"	4
234	Franklin, Elsworth	J	5	1	"	4
208	Foster, Henry		4	4	"	4
278	Greggs, Edward	J	6	4	"	6
312	Hicks, John W	J	1	2	"	5
288	Hutchinson, Wm	J	3	2	"	5
289	Hutchinson, G A	J			"	5
290	Hutchinson, A W	J			"	5
311	Hebbard, Geo		2	3	"	5
281	Herrick, A J	J	6	A	"	4
288	Howick, Wilbert	J	4	B	"	3
282	Humphry, Geo	J	1	B	"	3
327	Howick, Edward	J	1	B	T M F	3
324	Johnson, Joseph		2	B op	"	3
325	Johnson, Hugh	J	2	B op	"	3
326	Johnson, Wellington	J	2	B op	"	3
323	Johnson, William		3	B	F M F	3
431	Jenny, William		2	4	T M F	10
339	Kinsley, Jacob	J	5	2	F M F	5
372	Laforge, Peter		3	3	"	7
371	Lonsbury, Murray	J	3	3	T M F	11
350	Lefortune, John		3	1	"	5
353	Lashapelle, Andrew		3	A	F M F	4
354	Lashapelle, Delmer	J	3	A	"	4
355	Lashapelle, Austin		3	A	"	4

VOTERS' LIST, 1896.

3

P.O.

No. on Roll	Name.	Jurors	Lot	Con.	F. T. H. & M. F.	P.O.
6	424	Marlatt, John	6	3	"	6
10	335	McDonald, Walter	1	4	"	10
10	432	Millen, James	1	4	"	10
10	434	Millen, John	J 1	4	"	10
10	429	Mansfield, Warren	gore	4	"	11
4	430	Mansfield, Morris	J gore	4	"	10
10	412	Mansfield, Maitland	J gore	4	"	11
11	405	Miller, Philip	5	A	"	5
11	406	Miller, Darius	J 5	A	"	5
4	408	Marr, Peter	4	A	"	5
4	409	Marr, Arvil	J 4	A	"	5
4	411	Mitchiner, Bertram	J gore	2	"	11
4	399	Moore, William	J 1	A	"	11
4	384	McDonald, Byron	J 3	A	T M F	11
4	385	McDonald, Delome	J 3	A	"	11
4	398	Miller, Edward	J 5	5	F M F	4
4	400	Moulton, William	J 4	B	T M F	3
4	401	Moulton, Delbert	J 4	B	"	3
11						
4						
4						
4						
4						
4						
6	467	Overbaugh, Chas	J 2	2	F M F	5
	239	Overbaugh, Gideon	J 2	2	F M F	5
	468	Overbaugh, David	J 2	2	F M F	5
	476	Overbaugh, Joel	1	3	F M F	5
	454	Overbaugh, Fred'k	6	A	F M F	5
	457	Overbaugh, John	6	A	F M F	5
	458	Overbaugh, Hezekiah	6	A	F M F	5
	459	Oaks, Louis	4	A	F M F	5
	463	Overbaugh, Emery	4	1	F M F	5
	466	Overbaugh, Thomas	gore	A	F M F	11
5						
5						
5						
5						
4	492	Pool, Nathaniel	6	2	F M F	5
4	493	Pool, Rodolph	J 6	2	F M F	5
3	516	Powers, Wcsley	J 5	2	T M F	5
3	482	Pitman, Henry	J gore	B	F M F	11
3	483	Pitman, Samuel	J gore	B	F M F	11
3						
3						
3						
10	544	Rockafello, Albert	J 4	1	F M F	5
	539	Rohrer, Stephen	J 4	1	F M F	5
	530	Raymond, Nathan	J 1	A	T M F	11
	531	Roberts, Joseph	J 3	B	T M F	3
	554	Robinson, Alfred	3	3	F M F	10
	553	Roberts, Andrew	J 6	3	T M F	5
	543	Rockafello, Walter	4	2	F M F	5
5	542	Rockafello, W.D.	4	2	F M F	5
	541	Rockafello, Cornelius	J 3	1	F M F	5
7						
11						
5	574	Smith, Thomas	2	1	F M F	11
4	575	Smith, William	J 2	1	F M F	11
4	562	Shaw, Albert	J 2	A	F M F	11

No. on Roll	Name	Jurors	Lot	Con.	F T H & M F	P.O.
658	Underhill, Chas.		5	1	F M F	5
210	Vise, Frank	J	6	A	T M F	4
702	Weaver, William	J	5	3	F M F	6
673	Woodward, Lark	J	3	2	T M F	5
677	Wilson, Tom	J	3	2	T M F	5
672	Willis, Arthur	J	1	1	T M F	11
540	Wolvin, Wm.		4	1	T M F	5
703	Weaver, Frances		5	3	F M F	5

PART II.—List of persons entitled to vote at Municipal Elections only.

36	Ashford, Alfred		1	3	F	11
	Abbott, Jacob		6	B	F	2
75	Burton, Fred'k		2	4	F	11
76	Burton, Chas.		2	4	F	11
334	Beeman, Lewis		3	A	F	25
385	Beeman, Wesley		3	A	F	25
531	Barrett, Miss D		3	B	F	2
371	Butcher, Wm		3	3	F	11
154	Condon, Thos		2	4	F	21
401	Cartwright, Warren		4	B	F	26
202	Davis, W. W.		1	1	F	2
435	Dickinson, C.		3	3	F	12
254	Franklin, Mrs. E.		2	A		11
454	Franklin, Mrs. C		4	4		5
256	Frishette, Alonzo	gore	B		T	11
257	Frishette, Isaac	gore	B		T	11
257	Frishette, William	gore	B		T	11
460	Franklin, Mrs. C.		4	A	F	4
326	Johnson, Hugh		2	B	F	33

VOTERS' LIST, 1896.

5

P.O.	No. on Roll	Name.	Jurore	Lot	Con.	F. T. H. & J. F.	P.O.
5	62	Killmaster, Wm		6	1	T	2
	201	Killmaster, Geo		1	2	F	2
4	413	Mansfield, Mrs. C		gore	2	F	11
	407	Milln, Phillip, jr		5	A	F	5
	468	Morton, G K		4	1	F	5
	410	Myers, Mrs. Wallan		2	A	T	4
6							
5							
5							
11							
5	456	Overbaugh, Hannah		6	A	F	5
	455	Overbaugh, Mrs I.		6	A	F	5
	464	Overbaugh, Mrs. W.		4	1	F	5
	523	Phelau, C. W.		4	2	F	8
	553	Pretty, George		6	3	F	5
	478	Palmerson, B		6	4	F	12
at							
11							
2	351	Ryckman, James		3	1	F	19
11							
11	563	Seines, Edward		2	A	F	34
25							
25							
2							
11	434	White, D. W.		1	4	F	31

PART III.—List of persons entitled to vote at Elections to the Legislative Assembly only.

417	Marr, Uri	4	1	M F	4
462	Overbahng, Elgin	4	2		
461	Overbahng, Philip	4	1		4
613	Smith, Charles	5	3	M F	5
660	Underhill, Thos.	4	2	M F	5

NO. OF VOTERS.

Legislative Assembly and Municipal 133
 Municipal only 33
 Legislative Assembly only 5

171

Jurore 91

33

VOTERS' LIST, 1896.

Municipality of the Township of South Walsingham,
County of Norfolk.

POLLING SUB-DIVISION NO. 2,

Comprising Lots 7, 8, 9, 10, 11, 12 and 13 in Concessions 2, 3, 4; Lots 7, 8, 9, 10, 11, 12, 13, 14, 15 in Concessions 1; Lots 7, 8, 9, 10, 11, 12, 13 in Concessions A and B, and parts of lots 14, 15, 16 in Concessions A, not including Port Rowan. Polling place:—Plank Road School House.

PART I.—List of persons entitled to vote at both
Municipal Elections and Elections to the
Legislative Assembly.

No. on Roll	Name	Jurors	Lot	Con.	FTH & MF	P.O.
2	Anderson, H W					
13	Anger, Byron	J	10	A OP		
10	Anger, George	J	10	3	FMF	3
14	Anguish, Gilbert	J	10	3	FMF	7
15	Anguish, Daniel	J	10	3	FMF	7
				3	FMF	7
54	Brissaux, F W					
66	Bouck, Austin		10	B	T M F	
675	Bredin, John	J	10	2	F M F	3
71	Brown, Willard	J	9	2	F M F	2
73	Brown, Peter		8	2	F M F	2
70	Bishoprick, Oscar	J	9	1	F M F	2
98	Boughner, Angus	J	7	1	F M F	2
56	Becker, Henry	J	13	1	T M F	5
57	Becker, William	J	9	1	F M F	2
51	Barrett, M W		9	1	T M F	2
52	Barrett, Arthur		7	B	F M F	3
49	Brown, Henry	J	9	B	F M F	2
53	Brown, James		8	B	F M F	3
48	Brown, George	J	8	B	F M F	2
55	Brown, Emerson	J	7	B	F M F	3
59	Biddle, Wm.	J	14	A	F M F	3
		J	8	A	F M F	2
				1	T M F	2
131	Contryman, John					
132	Countryman, Ai.	J	8	B	F M F	4
128	Countryman, Abram	J	8	B	F M F	4
129	Contryman, Arnot		9	A	F M F	4
134	Chamberlain, Fred'k	J	9	A	F M F	1
			7	B	F M F	1
193	Dancey, William		10			
180	Dedrick, Geo. W	J	15	4	T M F	7
				1-OP	F M F	2

VOTERS' LIST, 1896.

1896.

Walsingham,

NO. 2,

2, 3, 4; Lots 7, 8, 9,
9, 10, 11, 12, 13 in
in Concessions A,
Road School House.

vote at both
ions to the

F T H & M F | P.O.

F M F 3
F M F 7
F M F 7
F M F 7
F M F 7

M F 3
M F 2
M F 2
M F 2
M F 2
M F 5
M F 2
M F 2
M F 2
M F 3
M F 2
M F 3
M F 3
M F 3
M F 2
M F 2

4
4
4
1
1

7
2

No. on Roll	Name.	Jurors	Lot	Con.	F. T. H. & M. F.	P.O.
176	Dedrick, Thos. H.	J	15	A	F M F	2
170	Dedrick, Chas. A.		12	A	T M F	2
171	Dedrick, James W		13	A	F M F	2
174	Dedrick, Austin	J	14	A O P	F M F	2
175	Dedrick, Austin, jr	J	14	A O P	F M F	1
198	DeWitt, Edgar E	J	11	A	F M F	3
572	Dare, Joseph	J	14	A	T M F	2
203	Ellis, Henry	J	14	A O P	F M F	2
257	Farr, William R		7	7	F M F	6
256	Farr, Peter		7	4	F M F	6
254	Forsyth, Daniel	J	10	4	T M F	6
255	Forsyth, Ezekiel		10	4	F M F	6
241	Fack, Fred'k	J	11	3	F M F	7
242	Fack, Edward	J	11	3	F M F	7
252	Franklin, Nelson		14	1	F M F	2
253	Franklin, Alexander	J	14	1	F M F	2
240	Falconer, Alex.	J	7	8	F M F	2
231	Franklin, James	J	12	1	F M F	5
272	Franklin, Clinton	J	10	1	F M F	2
208	Foster, Henry		7	B	F M F	4
207	Finch, Jefferson	J	12	A O P	F M F	3
229	Fick, Israel	J	10	B	F M F	3
230	Fick, Peter B	J	10	B	F M F	3
227	Fick, William		10	B	F M F	3
228	Fick, Artley		10	B	F M F	3
236	Franklin, Wm. Jr.	J	7-8	1	F M F	3
235	Franklin, E. T.		8	1	F M F	5
251	Franklin, W.	J	15	A	F M F	2
275	Gerhart, John	J	13	4	F M F	7
273	Gamage, William		8	4	F M F	5
321	Hutchinson, James		12	4 O P	"	7
318	Hallum, George		13	4	"	8
303	Hutchinson, Edward		13	2	"	7
302	Hutchinson, George	J	10	1	"	8
284	Hazen, Robert	J	11	A	"	2
285	Hicks, James		11	A	"	2
286	Hunter, Ira	J	7	3	"	5
281	Howe, Joseph	J	8	A	T M F	3
119	Higgins, Arthur		8	3	T M F	6
314	Hepburn, Wilson	J	11	4	T M F	6
333	Johnson, Anderson	J	12	4	F M F	7

VOTERS' LIST, 1896.

No. on Roll	Name	Jun voting	Lot	Con.	F T H & M F	P. O.
363	Loucks, Jonas	J	7	3	"	7
359	Loucks, Andrew	J	8	3 OP	"	7
360	Loucks, George	J	7	3 OP	"	8
361	Loucks, Richard	J	7	3 OP	"	7
362	Loucks, Edgar	J	7	3 OP	"	7
358	Loucks, Lafayette	J	9	3	"	7
357	Leedham, George	J	10	2	"	2
356	Lampkin, Wm	J	7	OP 2	"	5
364	Layman, Frank		8	4	"	6
349	Leighfield, W. H.	J	12	B	"	3
348	Leighfield, Edward	J	12	B	"	3
346	Lefortune, Colin		10	B	"	4
347	Lefortune, Frank	J	8	B	"	4
437	Mudford, Edward	J	13	3	"	7
438	Moore, H. A.		12	3	"	7
439	Moore, Alexander		12	3	"	7
440	Moore, Joseph		12	3	"	7
425	Moore, John W.	J	12	3	"	7
403	Moss, Wm. E.		7-8	A	"	5
402	Moss, Daniel	J	7-8	A	"	5
404	Moss, John W.		7-8	A	"	5
381	McCall, Arthur	J	13	A	"	2
382	McCall, Frederick	J	13	A	"	2
237	McDonald, John		7-8	1	"	5
418	Morse, W.		12	4	"	7
476	Moore, Elem		12	2	"	7
471	Osterhote, Ira		12	1	"	2
478	Osborne, Henry		7	B	"	4
458	Overbaugh, Ithamu		8	A	"	4
711	Otterson, Wm.		7	4	T M F	6
72	Ormsston, M. K.		8	2	T M F	2
474	Oaks, John		9	B	T M F	3
510	Pickard, H. W.	J	12	2	T M F	2
491	Pitman Job	J	14	A	F M F	2
490	Price, Dayton		14	A	"	2
481	Price, Edwin		12	A	"	2
489	Ponting, Elgin	J	22	A B	"	3
487	Procunier, Henry Jr.	J	10	OP B	"	3
488	Procunier, Henry		10	B	"	3
513	Price, William	J	10	B	T M F	3
484	Procunier, J. W.		8	B	"	3
485	Procunier, H. E.	J	8	B	"	3
486	Procunier, Edward	J	8	B	"	3
207	Pitman, Austin		13	3	F M T	2
534	Russell, George		12		F M T	3
532	Rymer, Thomas		10		F M T	3
523	Russell, Samuel		12		T M F	2

VOTERS' LIST, 1896.

F T H
& M F

P.O.

7
7
8
7
7
7
2
5
6
3
3
4
4

7
7
7
7
5
5
2
2
5
7
7

2
4
4
6
2
3

M F
M F
M F

2
2
2
2
3
3
3
3
3
2

T

3
2
2

No. on Roll	Name.	Jurors	Lot	Con.	F. T. H. & M. F.	P.O.
535	Rockafello, Allan	J	10	A	T M F	
536	Rockafello, Ansley	J	10	A	"	2
537	Rockafello, Lundy	J	10	A	"	
53	Ryckman, H.		9	B	"	2
549	Russell, Joseph		10	B	F M F	3
567	Skuse, Harry		10	B	T M F	3
566	Smith, Samuel	J	10	B	T M F	3
565	Spencer, Denis		10	B	F M F	3
568	Spencer, C. B.	J	11	B	F M F	3
569	Skuce, Frederick	J	11	B	T M F	3
571	Smith, John S	J	13	B	F M F	2
584	Smith, Lewis		10	4	F M F	6
573	Spencer, Chas. D.	J	12	1	F M F	2
587	Stewart, Geo., M. D.		11	1	T M F	2
567	Teepie, H.	J	10	B	T M F	3
656	Thompson, John		13	4	F M F	7
639	Trickett, Albert		12	2	F M F	2
616	Templeman, Wm.		7	2	T M F	5
624	Trickett, James		11	OP 1	F M F	2
625	Trickett, Thomas, Jr.		11	OP 1	F M F	2
627	Tackle, Henry		13	A	T M F	2
642	Trickett, T. Os.		12	1	F M F	2
643	Trickett, Chas.	J	12	1	F M F	2
644	Trickett, Samuel	J	12	1	F M F	2
645	Trickett, A.		12	3	F M F	2
626	Thomas, Isaac	J	13	1	F M F	2
628	Train, A. C.		7	1	F M F	5
639	Thomson, Arch.		12	1	T M F	2
700	Weber, John		7	4	F M F	6
670	Welsh, Ben.		7-8	A	"	4
671	Welsh, Harry	J	7-8	A	"	4
680	White, Joseph		11	2	"	2
681	White, Joseph, Jr.	J	11	2	"	2
569	Waner, H.		13	2	T M F	2
682	White, James		11	2	T M F	2
683	Wheeler, John		12	2	F M F	2
674	Winkworth, Wm.	J	9	2	T M F	2

PART II—List of persons entitled to vote at Municipal Elections only.

T
T
F

3
2
2

615	Botsworth, C. S.		11	marsh	F	20
620	Banks, W. H.		11	marsh	F	20

VOTERS' LIST, 1896.

No. on Roll	Name	front	Lot	Con.	F T H & M F	P.O.
154	Collett, John		14	marsh	F	2
193	Clarkson, A. M.		10	4	F	20
173	Dedrick, Chas.		15	A	F	2
	Dedrick, Jos. A.		13	1	F	2
172	Dedrick, Miss Emma		15	A	F	2
173	Dedrick, Miss Mary		15	A	F	2
174	Dedrick, Miss Amelia		15	A	F	2
180	Dedrick, Miss Jennie		15	A	F	2
181	Dedrick, Miss Elizabeth		15	A	F	2
182	Dedrick, Miss Minnie		15	A	F	2
190	Davies, John		14	A	F	28
205	Ellis, S. G.		15	A	F	2
233	Franklin, Mrs. A.		10	1	F	2
616	Foster, T. G.		11	marsh	F	20
617	Gowinlock, R. W.		11	marsh	F	20
510	Hutchinson, Mrs. L.		12	2	T	3
387	Hutchinson, Mrs. A.		11	2	F	2
304	Hodgins, Mrs. L.		13	2	F	7
621	Isaacks, D.		13	marsh		20
618	McGaw, Thos.		11	marsh	F	20
170	Mabee, Mrs. Hugh		12	A	F	2
414	Morton, Mrs. L.		9	2	F	2
397	McKay, Mrs. A.		9	4	F	7
383	McCrimmon, A. L.		11	A	F	3
471	Osterhote, Leah		12	A	F	2
487	Ponting, Mrs. Harriet		12	B	F	2
622	Pellatt, H. M.		11	marsh		20
343	Rockafello, Rolph		13	A	F	2

VOTERS' LIST, 1896.

11

No. on Roll	Name.	Jurors	Lot	Con.	F. T. H. & M. F.	P.O.
602	Smith, Mrs. Jerusha		14	A	F	2
568	Stearns, J. A.		13	2	F	2
342	Starr, R. H.		9	1	F	2
322	Smilie, R. S.		11	marsh	F	20
	Scott, Wm.			"	F	28
619	Winnett, Henry		11	marsh	F	20
696	White, Mary		9	4	F	2
697	White, Seraphina		9	4	F	2

PART III—List of persons entitled to vote at Elections to the Legislative Assembly only.

33	Adams, Perry		4	4	MF	7
87	Burns, John Bradly, Joseph		10 13	4 2	"	7 2
271	Hazen, Ahima		12	A	"	2
458	Overbaugh, Philip Osterhote, Thomas		4 12	1 A	"	5 2
	Patten, Louis		12	4	"	7
640	Tait, Albert		7	3	"	5
536 564	Smith, William Schram, George		10 10	4 B	"	6 3
559 661	Underhill, E. Underhill, John		9 13	4 4	"	6 7

NUMBER OF VOTERS.
 Legislative Assembly and Municipal 153
 Municipal only 38
 Legislative Assembly only 15

206

Jurors,

75

VOTERS' LIST, 1896.

Municipality of the Township of South Walsingham,
County of Norfolk.

POLLING SUB-DIVISION NO. 3.

Comprising all of Concessions 5 and 6, Polling Place—Town Hall, Walsingham Centre.

PART I.—List of persons entitled to vote at both
Municipal Elections and Elections to the
Legislative Assembly.

No. on Roll	Name	Jurors	Lot	Con.	F T H & M F	P.O.
17	Armour, Edward		2	5	F M F	10
1	Anger, Henry		17	5	"	7
27	Andrews, Richard	J	11	5	"	7
25	Ashford, James		3	6	"	10
26	Ashford, James W.		3	6	"	10
24	Andress, William E.	J	1	6	"	10
37	Armstrong, Thos.		13	5	"	7
119	Brandow, Judson	J	11	5	"	7
118	Berry, James	J	4	5	"	6
84	Bennett, Aaron	J	24	6	"	1
39	Brown, S. D.		17	5	T M F	7
42	Byerley, Thos.		15	5	F M F	7
43	Byerley, Andrew	J	15	5	"	7
74	Beckett, Samuel		13	5	"	7
48	Brandow, Chauncey		13	5	"	7
85	Bennett, Francis		24	6	"	1
83	Beckett, George		13	5	"	7
44	Brandow, W. R.		13	5	"	7
169	Bowmar, H. R.		18	6	"	7
162	Cope, Thos.		24	5	"	1
165	Cox, Edward		12	5	"	7
135	Clyne, Jas. W.	J	14	5	"	7
144	Chapman, Jeremiah		2	6	"	10
145	Chapman, James		2	6	"	10
125	Cronmuler, Daniel		10	6 OP	"	7
126	Cronmuler, William		7	OP	"	7
127	Cook, Jonah	J	13	6	"	7
158	Christmas, Laurence		13	6	"	7
159	Christmas, Albert		13	6	"	7
160	Christmas, John		13	6	"	7
138	Clubine, Edward		13	5	"	7
139	Clubine, Andrew		13	5	"	7

VOTERS' LIST, 1896.

13

No. on Roll	Name.	Jurors	Lot	Con.	F. T. H. & M. F.	P.O.
137	Card, Geo. A.		13	5	T M F	7
123	Card, James A.		14	6	F M F	7
143	Cain, Freeman		6	6	T M F	7
187	Darley, George		15	5	F M F	7
168	Dalton, F. W.	J	18	OP-6	F M F	7
186	Darley, Mark	J	10	6	T M F	7
188	Darley, Leonard	J	9	5	F M F	7
204	Everett, James	J	24	5	F M F	1
265	Furry, Melton		2	5	"	6
240	Fletcher, Donald		13	5	"	7
246	Fletcher, Donald, Jr.		12	5	"	7
638	Farr, Albert		7	5	T M F	6
276	Gregory, Chas.		8	5	"	7
277	Gregory, Edward	J	8	5	"	7
301	Hutchinson, Chas.	J	11	OP-5	F M F	7
300	Hazen, Eugene	J	10	5	"	6
298	Hepburn, William		9	5	"	6
315	Hendershott, Jacob		7-8	5	T M F	6
280	Hitchcock, Stephen		9	6	F M F	7
293	Hazen, H. W.		8	OP-6	"	7
295	Hawley, Nathaniel		13	5	T M F	7
331	Jamerson, Hugh		16	5	F M F	7
332	Jamerson, William		16	5	"	7
328	Jackson, Samuel T.	J	13	5	"	7
340	Kincaid, Robt.		12	5	"	7
23	Kite, John		1	6	T M F	10
368	Laloue, William	J	9	6	F M F	7
369	Lemburner, Geo.	J	8	6	"	7
366	Latham, W. C.		1	6	"	10
367	Latham, Oscar	J	1	6	"	10
345	Langfield, John		10	6	"	7

ingham,

Walsing-

at both
to the

P.O.

F 10
7
7
10
10
10
7

7
6
1
7
7
7
7
7
1
7
7
7

1
7
7
10
10
7
7
7
7
7
7
7

VOTERS' LIST, 1896.

No. on Roll	Name	Inhabitants	Lot	Con.	F T H & M F	P.O.
343	Langfield, David	J	8-9	16	F M F	7
344	Langfield, Andrew		8-9	16	"	7
374	Lees, William	J	13	OP. 6	"	7
375	Lees, Charles	J	13	6	"	7
341	Lefortune, Louis		14	6	"	7
376	Langs, Stewart	J	13	6	T M F	7
342	Lefortune, Wm.		14	6	F M F	7
470	Lefortune, Fred.		13	6	"	7
416	Muir, Robert		13	5	T M F	7
423	Morrick, Geo.	J	2	5	F M F	10
421	Merrick, Aaron		2	5	"	10
419	Moffatt, John	J	1	6	"	10
420	Moffatt, James	J	1	6	"	10
379	McIntosh, Alexander		11	6	"	7
415	Morgan, William	J	13	5	"	7
436	Moore, Calvin J		2	5	"	6
448	Nichole, George		2	6	"	10
469	Oltz, William	J	13	6	T M F	7
418	Piet, Emerson	J	6	5	"	6
509	Proper, Joan C.		14	5	"	7
517	Proper, Samuel		14	5	"	7
479	Patterson, Anderson		14	6	"	7
480	Patterson, Wellington		14	6	"	7
495	Pirie, George	J	13	5	"	7
496	Peronto, Michael		12	5	"	7
494	Phelan, John		13	5	"	7
555	Rush, Robt. Jr.	J	5	5	T M F	6
550	Ribble, W. H.		12	5	F M F	7
557	Ribble, John		13	5	T M F	7
611	Schram, Henry		18	5	"	7
594	Smith, Henry		12	5	F M F	7
585	Stenebaugh, J. R.	J	10	5	"	7
605	Simons, Lyman		17	5	T M F	7
604	Smith, Samuel		18	5	"	7
582	Smith, Chas. O.	J	5	5	"	7
580	Smith, William		4	6	"	10
581	Smith, A. E.	J	4	6	"	10

VOTERS' LIST, 1896.

15

No. on Roll	Name.	Jurors	Lot	Con.	F. T. H. & M. F.	P.O.
595	Summerhays, F.		13	5	"	7
576	Smith, Wm. S.		12	5	F M F	7
560	Simes, Theodore		18	6	"	7
616	Spencer, DeWitt	J	11	6	"	7
561	Tester, Ernest	J	18	6	T M F	7
622	Terry, Henry		12	5	"	7
632	Townsend, John	J	13	5	"	7
634	Townsend, Earnest	J	13	5	"	7
635	Townsend, Arthur	J	3	5	"	7
630	Terry, John S.		12	5	F M F	7
631	Terry, Aley M.		12	5	"	7
704	Wood, George	J	1	5	F M F	10
705	Watts, Benjamin		21	5	"	1
716	Watts, Joseph	J	21	5	"	1
667	Wingrove, Alonzo	J	17	6	"	7
666	Wingrove, Wallace	J	17	5	"	7
668	Wingrove, Geo.		16	6	"	7
711	Wingrove, John	J	13	6	"	7
676	Wheeler, Henry		13	6	"	7
679	Winter, Fred.		1	5	T M F	10
713	Yokom, Wm.	J	16	5	F M F	7
714	Yokom, C. D.	J	16	5	"	7
716	Yokom, A. A.		12	5	T M F	7

PART II.—List of persons entitled to vote at Municipal Elections only.

22	Andress, Walter		1	6	F	10
84	Brandow, Austin		17	6	T	7
122	Bennett, Mrs. P.		12	5	F	7
40	Backus, C. C.		15	5	F	12
77	Burger, Stephen		17	5	F	7
	Brock, John		24	5	F	1

VOTERS' LIST, 1896.

No. on Roll	Name	Acres	Lot	Con.	F T R & M F	P.O.
161	Christmas, Annie		13	6	F	7
595	Cook, Abel		13	5	"	7
155	Curtis, T. E.		3	5	"	12
156	Carscallen, H.		12	16	"	32
37	Dean, I. C.		13	5	"	7
199	Day, Mrs. E.		13	5	"	7
386	Dare, Samuel		11	6	T	7
295	Hawley, Wm.		13	5	F	7
186	Huson, Wm.		10	6	"	22
292	Hazen, Mrs. M.		12	5	T	7
316	Jackson, T. R.		13	5	F	7
368	Malone, Samuel		7	6	"	7
365	Lawson, Chas.		11	6	"	24
373	Livingstone, L. R.		16	5	"	17
387	McCall, Walter		20	5	"	1
389	McCall, Bruce		20	5	"	1
390	Mason, John		20	5	"	1
445	Mabee, Peter		19	5	"	12
424	Marlatt, Catherine		10	5	"	6
422	Morrick, Wm.		2	5	"	10
551	Rodgers, James		24	6	"	1
548	Richards, Mrs. M.		24	6	"	14
679	Redding, Fred.		1	5	"	27
610	Sohram, Mrs. C.		13	5	"	7
315	Stratford, Jos.		8	5	"	30
566	Summerhayes, Mrs.		13	5	"	2

VOTERS' LIST, 1896.

17

No. on Roll	Name.	Jurors	Lot	Con.	F. T. H. & M. F.	P.O.
637	Townsend, Mrs. V.		7	5	F	6
604	Wingrove, Wilber		18	5	"	32
669	Wingrove, Whit		16	6	"	7
377	Wood, Darius		13	6	"	12
714	Yokom, Mrs. J.		16	5	"	7

PART III.—List of persons entitled to vote at Elections to the Legislative Assembly only.

21	Allan, Wm.		12	6	T	7
120	Bouck, J. W.		13	6	M F	7
121	Bradt, James		13	5	"	7
167	Calvert, R.					
200	Day, William					
244	Fletcher, Stephen		13	5	"	7
245	Fletcher, Chas.		13	5	"	7
370	Higgins, Robt.		11	5	"	6
378	Laymon, J L.		17	6	"	7

VOTERS' LIST, 1896.

No. on Roll	Name	Lot	Con.	F T H & M F	P.O.
396	McIntosh, George	11	6	"	7
519	Proper, John	14	5	"	7
520	Proper, William	15	5	"	7
545	Rush, John	13	5	"	7
546	Rush, Robt.	13	5	"	7
541	Robins, Samuel	16	6	"	7
558	Ribble, Geo.	14	5	"	7
583	Smith, Alfred	5	6	"	7
379	Shoup, J. W.	13	5	"	7
309	Summerhayes, Chas.	13	5	"	7

NUMBER OF VOTERS.

Legislative Assembly and Municipal	123
Municipal only	37
Legislative Assembly only	19
	<hr/>
	179

Jurors 49

VOTERS' LIST, 1896.

Municipality of the Township of South Walsingham,
County of Norfolk.

POLLING SUB-DIVISION NO. 4.

Comprising Lots 14, 15, 16, 17, 18, 19, 20, 21, 22, 23, 24, in Concessions 2, 3, and 4; Lots 16, 17, 18, 19, 20, 21, 22, 23, 24 in Concessions 1 and 17, Concession A and Long Point.

PART I.—List of persons entitled to vote at both
Municipal Elections and Elections to the
Legislative Assembly.

No. on Roll	Name.	Jurors	Lot	Con.	F. T. H. & M. F.	P.O.
19	Aker, Arthur		24	2	T M F	1
32	Ayers, George		22	3	F M F	1
39	Aker, Sydney	J	21	1	"	2
107	Brandow, Abram		19	3	"	2
87	Brandow, Chas.	J	18	3	"	2
90	Brandow, Herbert	J	18	2	T M F	2
117	Brown, Isaiah		17	4	F M F	2
104	Backhouse, J. H.		17	1 OP	"	2
105	Backhouse, J. C.	J	17	2 OP	"	2
112	Backhouse, Peter		17	1	"	2
100	Barrett, H. M.		16	1	"	2
81	Brandow, Luke		24	1	"	2
91	Barker, Wesley		21	2	T M F	1
103	Bowlby, Joseph	J	16	1	F M F	2
111	Bennett, Henry	J	20	2	"	1
112	Bennett, J. L.	J	20	2	"	1
110	Baldwin, Albert	J	23	3	"	1
93	Brown, Lewis	J	21	1	"	1
108	Baldwin, George		22	3	T M F	1
92	Brandow, Henry		21	1	F M F	1
94	Becker, James M.		21	1	"	2
95	Brown, Isaac	J	19	1 OP	"	2
96	Brown, Albert	J	19	1 OP	"	2
73	Bulmer, John	J	21	2	T M F	1
685	Brandow, Thos.		22	2	F M F	1
59	Biddle, Wm.	J	17	2	"	2

No. on Roll	Name	J no	Lot	Con.	F T H & M F	P.O
152	Clemense, John	J	21	1	T M F	2
153	Chamberlin, John	J	20	1	"	2
163	Card, Walter		21	4	"	7
164	Carl, George	J	17	4	"	7
166	Cronk, Jacob H.		18	4	F M F	2
140	Clyne, P. F.	J	20	2	T M F	1
146	Cridland, Frank	J	20	2	F M F	1
149	Cridland, Joseph	J	19	2	"	1
191	Dease, Brown	J	22	2	"	1
195	Dickinson, W. E.	J	21	1	"	2
196	Dickinson, Edward		21	1	"	2
197	Davis, Jerome		18	1	"	2
194	Denny, William		24	2	T M F	1
226	Evans, Richard		15	3	F M F	1
247	Freshette, Abram		24	1	T M F	1
249	Fick, Stephen	J	19	2	"	2
248	Ferris, William	J	23	4	"	1
271	Ferris, George	J	24	4	F M F	1
272	Ferris, Charles	J	24	4	"	1
262	Fish, George	J	20	4	"	1
248	Ferris, W. P.	J	L	Point	T M F	2
279	Garner, Jacob		16	4	F M F	7
310	Hathaway, Wm.		22	3	"	1
309	Hathaway, Thos.		22	2	"	1
322	Hammond, James		24	3	"	1
313	Horton, Geo.	J	24	4	"	1
318	Hooper, Alfred		15	3	"	2
307	Hutchinson, Albert C.	J	15	2	"	2
308	Harp, Albert		16	3	"	2
306	Holt, Samuel N.		16	1	"	2
305	Harris, Jas.	J	14	2	T M F	1
334	Johnson, Levi		19	3	"	1
335	Johnson, John	J	19	3	"	1
336	Johnson, Charters	J	19	3	"	1

VOTERS' LIST, 1896.

21

No. on Roll	Name.	Jurors	Lot	Con.	F. T. H. & M. F.	P.O.
141	Cope, John	J	24	2	F M F	1
148	Cridland, Robt.	J	19	2	T M F	2
157	Cridland, George	J	22	1	"	2
391	McDonald, Warren		24	1	F M F	1
386	McCall, Andrew		24	1	"	1
392	McKinnon, Lachlin		24	2	"	1
441	Myers, Arthur	J	22	4	"	1
442	Myers, Wm. H.		22	4	"	1
443	Myers, John	J	21	4	"	1
496	Moulton, Andrew	J	19	4	"	2
496	Moulton, John		18	3	T M F	1
525	Mena, Levi	J	24	3	"	1
447	Newman, G. W.		24	1	F M F	1
450	Newman, Matthew	J	22	3	"	1
449	Newkirk, Nathaniel	J	22	2	"	1
452	Newkirk, Abram		16	3	"	2
472	Oaks, Wilfred	J	21	2	"	1
508	Price, Geo. W.		24	1	T M F	1
404	Price, Peter Jr.		24	1	F M F	1
524	Price, J. DeWitt	J				
505	Price, Walter		24	1	"	1
315	Price, J. C.		24	3	T M F	1
498	Price, Stephen	J	24	2	F M F	1
497	Price, Horatio		24	2	"	1
527	Price, John		24	3	T M F	2
417	Price, James		23	4	"	1
489	Pretty, James	J	17	3	"	2
509	Prounier, David		24	1	F M F	1
521	Ponting, Geo.		18	11	"	2
521	Ponting, Geo. Jr.	J	18	11	"	2
528	Quick, George	J	20	3	T M F	1
529	Quick, J. W.	J	20	3	"	1
559	Reeyes, Avilah		24	2	F M F	1
550	Robins, George		14	4	"	7
552	Reynolds, William		14	3	"	2
602	Smith, Thos. H.	J	21	3	"	1
590	Smith, Culver	J	26	1	"	1
589	Smith, Eugene	J	20	1	"	1

No. on Roll	Name	Residence	Lot	Con.	F T H & M F	P.O.
596	Smith, George		19	1	"	2
697	Smith, W. B.	J	19	1	"	2
612	Sherman, Johu		18	4	"	7
604	Smith, Daniel		18	4	"	2
592	Swick, John	J	15	1	T M F	2
593	Saxton, Isaac		14	3	F M F	2
600	Swick, Wesley		19	3	T M F	1
643	Trickett, Alb.		14	3	"	2
649	Trickett, William		14	2	"	2
652	Terhune, Jos. R.		23	4	"	1
636	Tolan, John		24	1	F M F	1
650	Terhune, Edward	J	23	4	T M F	1
651	Terhune, Chas.	J	23	3	"	1
646	Thompson, Alonzo	J	16	2	"	2
647	Thompson, Alonzo Jr.	J	16	2	"	2
662	Unger, Lewis	J	24	4	F M F	1
665	Vail, Alex.	J	23	2	"	1
686	Woodward, Halum	J	24	2	"	1
684	Wardel, Walter	J	22	2	"	1
673	Woodward, H. H.		24	1	"	1
687	Woodward, Edward	J	23	1	"	1
688	Woodward, Vernon	J	23	1	"	1
694	Williams, Charles		18	1	"	2
695	Williams, Austin		18	1	"	2
696	Williams, Titus B.		18	1	"	2
690	Williams, Isaac		18	1	"	2
691	Williams, Frank		18	1	"	2
712	Watts, John M.		23	3	"	1
708	Watts, George		20	4	"	1
710	Winkworth, John				"	7
697	White, Moses		14	2	"	2
698	White, Hezekiah	J	14	2	"	2
699	White, Lundy	J	14	2	"	2
677	White, Geo. M.		24	1	T M F	1
689	Woodward, Eslie	J	23	1	F M F	1
707	Watts, James B.		21	4	T M F	1

PART II--List of persons entitled to vote at Municipal Elections only.

No. on Roll	Name.	Jurors	Lot	Con.	F. T. H. & M. F.	P.O.
20	Amesberry, Mrs. M.		24	1	F	1
30	Andress, Lucretia		23	3	"	1
18	Andress, Wm.		21	2	"	1
28	Aker, Mrs. H.		20	1	"	2
38	Alway, Frederick			L. Point		16
58	Bolby, Hiram		17	2	"	13
109	Baldwin, Mrs. J.		23	3	"	1
152	Becker, Jonathan		2	1	"	2
147	Cope, Mrs. V.		24	1	"	2
142	Cope, Frederick		23	3	"	2
512	Carey, G. M. W.		17	A	"	2
593	Dease, A. J.		15	1	"	2
156	Dease, Mrs. N.		22	1	"	2
161	Dedrick, James A.		21	2	"	2
156	Dedrick, Thos. B.		21	2	"	2
247	Frishette, Wm.				T	21
196	Fraser, Wm.		18			
728	Grey, T. M.			L. Point		20
209	Hathaway, Ed.		22	2	"	1
296	Helmer, Asa		4	1	"	1
237	Helmer, Wm.		4	1	"	1

P.O.
2
2
7
2
2
2
1

2
2
1
1
1
1
1
2
2

1

1
1
1
1
1
2
2
2
2
2
2
2
2
1
1
7
2
2
2
1
1
1

No. on Roll	Name	Township	Lot	Con.	F T H & M F	P. O.
525	Killmaster, Mrs.		20	3	F	2
528	Killmaster, H. J.		20	3	"	2
350	Killmaster, C. S.		18	4	"	2
79	McCall, Maggie		11	1	T	1
393	McDonald, Mrs. E.		19	2	"	1
140	Mulkins, Alfred		24	1	F	1
305	Nevett, William		19	4	"	1
108	Newman, Philip		22	3	"	1
511	Pitman, Austin		16	3	"	2
506	Price, Julia		24	2	"	1
501	Price, Peter		24	2	"	1
502	Price, George		24	2	"	1
514	Price, Milissa		24	3	"	1
499	Price, Hester A.		24	2	"	1
526	Price, Mary		24	3	"	1
572	Pitman, George		17	A	T	2
90	Richardson, R.		18	2	F	2
31	Smith, Mima		21	3	"	1
250	Scarth, Wm.		18	1	"	2
577	Smith, Daniel		24	1	"	1
727	Soyereen, S. M.			L. Point		12
635	Thorold, Wm.		29	2	F	1
503	Tisdale, Mrs. S.		24	4	"	1
653	Tisdale, Hon. D.		22	4	"	12
654	Taylor, William		22	4	"	15
548	Yonson, George		24	1	"	15

VOTERS' LIST, 1896.

25

No. on Roll	Name.	Jurors	Lot	Con.	F. T. H. & M. F.	P.O.
-------------	-------	--------	-----	------	------------------	------

PART III—List of persons entitled to vote at Elections to the Legislative Assembly only.

81	Brandow, Frank		24	1	M F	1
115	Backhouse, J. D.		18	2	"	2
105	Boyington, John		17	2	"	2
80	Brandow, Arthur		24	2	"	1
717	Brooks, Jos.			L. Point	F M F	12
150	Campbell, Geo.		22	1	"	1
718	Dunkin, Jos.			L. Point	F M F	36
261	Fure, George		22	4	"	1
317	Harrison, Wm			L. Point	F M F	1
230	Johnson, James		24	1	"	1
370	Laymon, Ephram		21	2	"	1
394	McDonald, Walter		17	1	"	2
721	Oaks, Edward			L. Point	"	16
722	Oaks, Henry			"	"	36
723	Pope, Wm.			"	"	35
724	Pope, Horatio			"	"	35
548	Rockofello, B. C.		24	1	M F	4

VOTERS' LIST, 1896.

No. on Roll	Name.	Jurors	Lot	Con.	F. T. H. & M. F.	P.O.
600	Schram, Arthur		19	3	"	2
608	Stoker, W. H.			L. Point	"	2
595	Sutton, Frank		17	2	"	2
599	Schram, J. F.		19	3	"	2
614	Smith, Henry		10	4	"	2
725	Stickney, Samuel			L. Point	F M F	29
726	Tripp, Wm.			"	"	12
664	Underhill, Olnor		18	2	M F	2

NUMBER OF VOTERS.

Legislative Assembly and Municipal	134
Municipal only	47
Legislative Assembly only	25
	<hr/>
	206
Jurors	67

Total number of Votes in Township for Assembly and Municipal	543
Municipal only	155
Legislative Assembly only	64
	<hr/>
	762
Jurors	282

I, John Phelan, Clerk of the Municipality of South Walsingham, in the County of Norfolk, do hereby certify that parts ONE and THREE of the within List constitute a correct list for the year 1896 of all persons appearing by the last revised Assessment Roll of the said Municipality to be entitled to vote at Elections for Members of the Legislative Assembly, and that parts ONE and TWO constitute a correct list for the said year, of all persons appearing by the said Roll to be entitled to vote at Municipal Elections in the said Municipality; and I hereby call upon all Electors to examine the said list, and if any omissions or other errors are perceived therein to take immediate proceedings to have the said errors corrected according to law.

JOHN PHELAN, Township Clerk

Dated this 11th day of July, 1896.

P.O.

2
2
2
2
2
29

12

2

the
thin
the
vote
ONE
ring
said
list,
iate

erk

NOTICE.



The Sheriff shall, immediately upon the receipt of his copies, cause one of them to be posted up in a conspicuous place in the Court House; and the Clerk of the Peace, upon the receipt of his copies, shall cause one of them to be posted in a conspicuous place in his office, and every Public and Seperate School Head Master, or Mistress, shall, in like manner, post up one of his or her copies on the door of the School House; and every Postmaster shall post up one of his copies in his Post Office.

List First Posted the ~~14th~~ Day of July, 1896.

