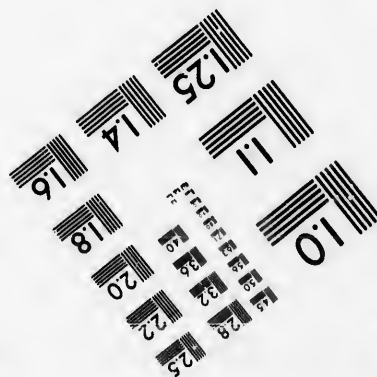
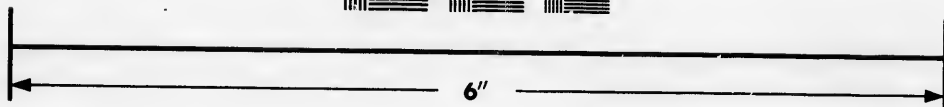
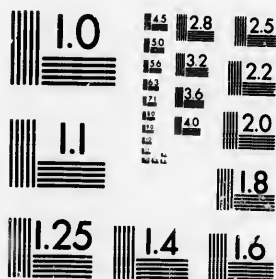


**IMAGE EVALUATION
TEST TARGET (MT-3)**



**Photographic
Sciences
Corporation**

23 WEST MAIN STREET
WEBSTER, N.Y. 14580
(716) 872-4503

**CIHM/ICMH
Microfiche
Series.**

**CIHM/ICMH
Collection de
microfiches.**



Canadian institute for Historical Microreproductions / Institut canadien de microreproductions historiques

© 1986

Technical and Bibliographic Notes/Notes techniques et bibliographiques

The Institute has attempted to obtain the best original copy available for filming. Features of this copy which may be bibliographically unique, which may alter any of the images in the reproduction, or which may significantly change the usual method of filming, are checked below.

L'institut a microfilmé le meilleur exemplaire qu'il lui a été possible de se procurer. Les détails de cet exemplaire qui sont peut-être uniques du point de vue bibliographique, qui peuvent modifier une image reproduite, ou qui peuvent exiger une modification dans la méthode normale de filmage sont indiqués ci-dessous.

- Coloured covers/
Couverture de couleur
- Covers damaged/
Couverture endommagée
- Covers restored and/or laminated/
Couverture restaurée et/ou pelliculée
- Cover title missing/
Le titre de couverture manque
- Coloured maps/
Cartes géographiques en couleur
- Coloured ink (i.e. other than blue or black)/
Encre de couleur (i.e. autre que bleue ou noire)
- Coloured plates and/or illustrations/
Planches et/ou illustrations en couleur
- Bound with other material/
Relié avec d'autres documents
- Tight binding may cause shadows or distortion along interior margin/
Le reliure serrée peut causer de l'ombre ou de la distorsion le long de la marge intérieure
- Blank leaves added during restoration may appear within the text. Whenever possible, these have been omitted from filming/
Il se peut que certaines pages blanches ajoutées lors d'une restauration apparaissent dans le texte, mais, lorsque cela était possible, ces pages n'ont pas été filmées.
- Additional comments: [Printed ephemera] 1 sheet (verso blank)
Commentaires supplémentaires:
- Coloured pages/
Pages de couleur
- Pages damaged/
Pages endommagées
- Pages restored and/or laminated/
Pages restaurées et/ou pelliculées
- Pages discoloured, stained or foxed/
Pages décolorées, tachetées ou piquées
- Pages detached/
Pages détachées
- Showthrough/
Transparence
- Quality of print varies/
Qualité inégale de l'impression
- Includes supplementary material/
Comprend du matériel supplémentaire
- Only edition available/
Seule édition disponible
- Pages wholly or partially obscured by errata slips, tissues, etc., have been refilmed to ensure the best possible image/
Les pages totalement ou partiellement obscurcies par un feuillet d'errata, une pelure, etc., ont été filmées à nouveau de façon à obtenir la meilleure image possible.

This item is filmed at the reduction ratio checked below/
Ce document est filmé au taux de réduction indiqué ci-dessous.

10X	14X	18X	22X	26X	30X
<input type="checkbox"/>	<input type="checkbox"/>	<input type="checkbox"/>	<input checked="" type="checkbox"/>	<input type="checkbox"/>	<input type="checkbox"/>
12X	16X	20X	24X	28X	32X

The copy filmed here has been reproduced thanks to the generosity of:

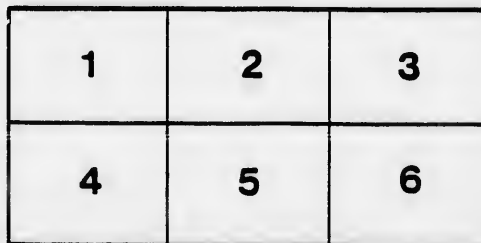
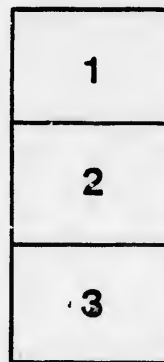
Manuscript Division
Public Archives of Canada

The images appearing here are the best quality possible considering the condition and legibility of the original copy and in keeping with the filming contract specifications.

Original copies in printed paper covers are filmed beginning with the front cover and ending on the last page with a printed or illustrated impression, or the back cover when appropriate. All other original copies are filmed beginning on the first page with a printed or illustrated impression, and ending on the last page with a printed or illustrated impression.

The last recorded frame on each microfiche shall contain the symbol \rightarrow (meaning "CONTINUED"), or the symbol ∇ (meaning "END"), whichever applies.

Maps, plates, charts, etc., may be filmed at different reduction ratios. Those too large to be entirely included in one exposure are filmed beginning in the upper left hand corner, left to right and top to bottom, as many frames as required. The following diagram illustrates the method:



L'exemplaire filmé fut reproduit grâce à la générosité de:

Division des manuscrits
Archives publiques du Canada

Les images suivantes ont été reproduites avec le plus grand soin, compte tenu de la condition et de la netteté de l'exemplaire filmé, et en conformité avec les conditions du contrat de filmage.

Les exemplaires originaux dont la couverture en papier est imprimée sont filmés en commençant par le premier plat et en terminant soit par la dernière page qui comporte une empreinte d'impression ou d'illustration, soit par le second plat, selon le cas. Tous les autres exemplaires originaux sont filmés en commençant par la première page qui comporte une empreinte d'impression ou d'illustration et en terminant par la dernière page qui comporte une telle empreinte.

Un des symboles suivants apparaîtra sur la dernière image de chaque microfiche, selon le cas: le symbole \rightarrow signifie "A SUIVRE", le symbole ∇ signifie "FIN".

Les cartes, planches, tableaux, etc., peuvent être filmés à des taux de réduction différents. Lorsque le document est trop grand pour être reproduit en un seul cliché, il est filmé à partir de l'angle supérieur gauche, de gauche à droite, et de haut en bas, en prenant le nombre d'images nécessaire. Les diagrammes suivants illustrent la méthode.

errata
to

pelure,
on à



32X

Barton, 23d August, 1830.

PROPOSALS will be received by the Subscribers, Commissioners appointed under the authority of an act of the last Session of Parliament "for the Improvement of Roads and Bridges in this Province," until the 4th day of September next, for repairing the Hill and erecting a new bridge at W. B. Sheldon's Saw Mill, from such persons as may wish to contract for the whole or a part of the same; when the most advantageous offers will be accepted, and undoubted security will be required for the due performance of all the contracts entered into. The names of Sureties must be mentioned in the proposals.

SPECIFICATIONS.

Mudsills of 25 feet in length to support the bank on one side and the hand-railing on the other, made of timber that will square to 12 inches, are to be placed at every 15 feet distance, the whole way going up hill.

A post to support the timber to brace up the bank, 5 feet high, to be framed, mortised and braced 3 feet high into each mudsill.

Likewise at 6 feet from the other end of each mudsill a post to be framed, mortised and braced to support a handrail 3 feet high, leaving a clear space of 16 feet in the centre of the road.

Timber felled on the side towards the road, to be placed between the upper posts, and the bank of the hill to support the same.

The road up hill to be completely turnpiked and covered with 6 inches of gravel and a ditch to be made between the brace and the post towards the hill.

THE BRIDGE.

Two abutments of about 8 feet in height, and 16 feet in width to be made of good round sound timber that will square 1 foot, at a distance of 20 feet from each other to afford so much space for a water course.—The abutments to be filled with stone and earth, and finished in a manner uniform with the rest of the road.

In the centre of the water course a bent to be made of squared timber 12 by 14 inches. The ground sill to be 26 feet in length, the height of the post between the ground sill and the floor of the bridge 8 feet. This bent is to support the string pieces to be placed between the abutments and the same. The said Bridge and abutments to be secured with a good and sufficient hand rail.

The String pieces to be not less than 10 or 12 inches; the covering of the bridge of flatted timber 8 by 12 inches thick and all posts and hand rails both of the bridge and going up the hill to be 8 inches square.

The work will be let out in whole or in part, and is to be finished on or before the 11th of October next.—The Proposals to be addressed to Daniel Crosthwaite at Barton, at whose house those proposing to Contract are requested to attend.

DANIEL CROSTHWAITE, } *Commissioners.*
LEWIS HORNING, }

