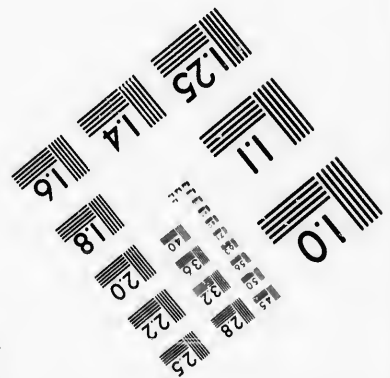
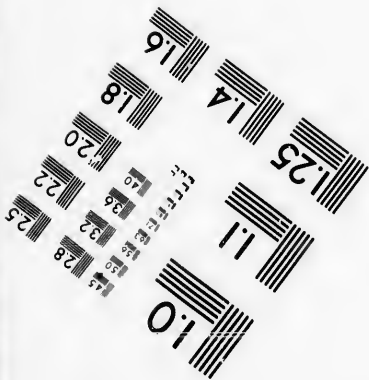
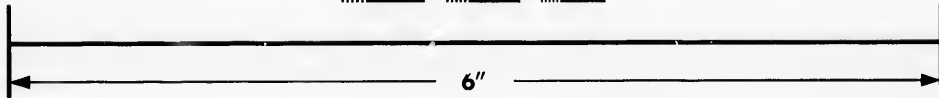
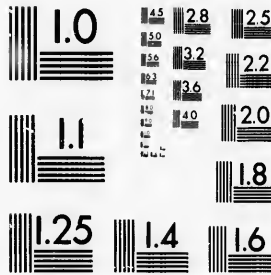


**IMAGE EVALUATION
TEST TARGET (MT-3)**



Photographic
Sciences
Corporation

23 WEST MAIN STREET
WEBSTER, N.Y. 14580
(716) 872-4503



**CIHM/ICMH
Microfiche
Series.**

**CIHM/ICMH
Collection de
microfiches.**



Canadian Institute for Historical Microreproductions / Institut canadien de microreproductions historiques



© 1986

Technical and Bibliographic Notes/Notes techniques et bibliographiques

The Institute has attempted to obtain the best original copy available for filming. Features of this copy which may be bibliographically unique, which may alter any of the images in the reproduction, or which may significantly change the usual method of filming, are checked below.

L'Institut a microfilmé le meilleur exemplaire qu'il lui a été possible de se procurer. Les détails de cet exemplaire qui sont peut-être uniques du point de vue bibliographique, qui peuvent modifier une image reproduite, ou qui peuvent exiger une modification dans la méthode normale de filmage sont indiqués ci-dessous.

- Coloured covers/
Couverture de couleur
- Covers damaged/
Couverture endommagée
- Covers restored and/or laminated/
Couverture restaurée et/ou pelliculée
- Cover title missing/
Le titre de couverture manque
- Coloured maps/
Cartes géographiques en couleur
- Coloured ink (i.e. other than blue or black)/
Encre de couleur (i.e. autre que bleue ou noire)
- Coloured plates and/or illustrations/
Planches et/ou illustrations en couleur
- Bound with other material/
Relié avec d'autres documents
- Tight binding may cause shadows or distortion
along interior margin/
Liaison serrée peut causer de l'ombre ou de la
distorsion le long de la marge intérieure
- Blank leaves added during restoration may
appear within the text. Whenever possible, these
have been omitted from filming/
Il se peut que certaines pages blanches ajoutées
lors d'une restauration apparaissent dans le texte,
mais, lorsque cela était possible, ces pages n'ont
pas été filmées.
- Additional comments:/
Commentaires supplémentaires:

- Coloured pages/
Pages de couleur
- Pages damaged/
Pages endommagées
- Pages restored and/or laminated/
Pages restaurées et/ou pelliculées
- Pages discoloured, stained or foxed/
Pages décolorées, tachetées ou piquées
- Pages detached/
Pages détachées
- Showthrough/
Transparence
- Quality of print varies/
Qualité inégale de l'impression
- Includes supplementary material/
Comprend du matériel supplémentaire
- Only edition available/
Seule édition disponible
- Pages wholly or partially obscured by errata
slips, tissues, etc., have been refilmed to
ensure the best possible image/
Les pages totalement ou partiellement
obscurcies par un feuillet d'errata, une pelure,
etc., ont été filmées à nouveau de façon à
obtenir la meilleure image possible.

[Printed ephemera] 1 sheet (verso blank) There are some creases in the middle of the pages.

This item is filmed at the reduction ratio checked below/
Ce document est filmé au taux de réduction indiqué ci-dessous.

| | | | | | |
|--------------------------|--------------------------|--------------------------|--------------------------|-------------------------------------|--------------------------|
| 10X | 14X | 18X | 22X | 26X | 30X |
| <input type="checkbox"/> | <input type="checkbox"/> | <input type="checkbox"/> | <input type="checkbox"/> | <input checked="" type="checkbox"/> | <input type="checkbox"/> |
| 12X | 16X | 20X | 24X | 28X | 32X |

The copy filmed here has been reproduced thanks to the generosity of:

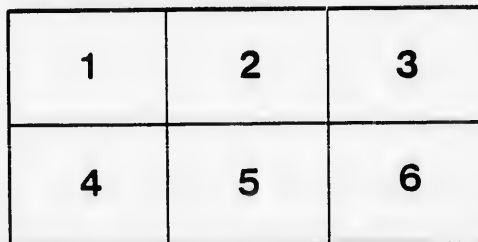
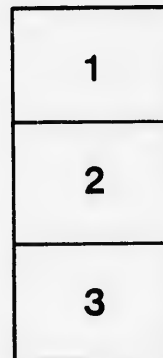
D. B. Weldon Library
University of Western Ontario
(Regional History Room)

The images appearing here are the best quality possible considering the condition and legibility of the original copy and in keeping with the filming contract specifications.

Original copies in printed paper covers are filmed beginning with the front cover and ending on the last page with a printed or illustrated impression, or the back cover when appropriate. All other original copies are filmed beginning on the first page with a printed or illustrated impression, and ending on the last page with a printed or illustrated impression.

The last recorded frame on each microfiche shall contain the symbol \rightarrow (meaning "CONTINUED"), or the symbol ∇ (meaning "END"), whichever applies.

Maps, plates, charts, etc., may be filmed at different reduction ratios. Those too large to be entirely included in one exposure are filmed beginning in the upper left hand corner, left to right and top to bottom, as many frames as required. The following diagrams illustrate the method:



L'exemplaire filmé fut reproduit grâce à la générosité de:

D. B. Weldon Library
University of Western Ontario
(Regional History Room)

Les images suivantes ont été reproduites avec le plus grand soin, compte tenu de la condition et de la netteté de l'exemplaire filmé, et en conformité avec les conditions du contrat de filmage.

Les exemplaires originaux dont la couverture en papier est imprimée sont filmés en commençant par le premier plat et en terminant soit par la dernière page qui comporte une empreinte d'impression ou d'illustration, soit par le second plat, selon le cas. Tous les autres exemplaires originaux sont filmés en commençant par la première page qui comporte une empreinte d'impression ou d'illustration et en terminant par la dernière page qui comporte une telle empreinte.

Un des symboles suivants apparaîtra sur la dernière image de chaque microfiche, selon le cas: le symbole \rightarrow signifie "A SUIVRE", le symbole ∇ signifie "FIN".

Les cartes, planches, tableaux, etc., peuvent être filmés à des taux de réduction différents. Lorsque le document est trop grand pour être reproduit en un seul cliché, il est filmé à partir de l'angle supérieur gauche, de gauche à droite, et de haut en bas, en prenant le nombre d'images nécessaire. Les diagrammes suivants illustrent la méthode.

ails
du
odifier
une
mage

rrata
to

pelure,
n à

le of the pages.

32X

People's Popular-Price Play-House.

ALEX. HARVHY, Manager.

W. N. SPENCE, Treasurer.

WEDNESDAY NIGHT, NOV. 20th.

The Castle Square
... Stock Company

PRESENTING

"TRUE IRISH HEARTS"

CAST OF CHARACTERS.

Bernard Cavanaugh, in love with Kathleen, H. Howard Hagan
Terrace O'Moore, Kathleen's sweetheart, Chas. H. Perry
David O'Connor, Kathleen's father, James A. Callahan
Billy Buttoncap, Thinks he's an awful "willian", L. L. Greene
Capt. Clearfield, tool of Cavanaugh's, Ion. Carrol
Father O'Cassidy, a priest, Norman Gray
Black Roddy, a murderer, I. Carrol
Red Barney, his assistant, J. A. Catham
Kitty O'Laverty, Billy's Sweetheart, Miss Helen McCabe
Miss Dorothy Cavanaugh, Bernard's sister, Miss Mabel Pelham
Mag Marshlough, By herself
Kathleen O'Connor, the Irish peasant girl, Bozie Stevens Ewart

SYNOPSIS.

ACT I—An Irish peasant's home—The landlord's visit—Kathleen wants to be a lady—The real diamond ring—Call for your answer in the morning—I will—Good night, Kathleen.

ACT II—I'm a lady, a rich man's wife—The plot—Kittie and Billie—Oh, what a villain I am—Lost—Ruined—Dishonored—Father O'Cassidy to the rescue—Not yet, Kathleen.

ACT III—The hired assassin—At 11 o'clock—At the Black Cross—I buried a peddler there five years ago—Terence alone in the mountain—The arrival of Bernard and Kathleen—I shall soon return—Grab her Barney—Terence to the rescue—The struggle—The hand to hand fight—Bernard killed—You are my prisoner.

ACT IV—Terence in prison—Father O'Cassidy call—Kathleen—The parting of Kathleen and Terence—Let me die for him—May God have mercy on your soul—Let me die like a Christian and an Irishman—St. Patrick's Day in the morning—The awakening—Why, it's all been a dream—Terence's voice—The Squire calls for his answer—Yes or no—No—The arrival of the boys and girls—The real old Irish jig—It's old Mag—Good night.

BETWEEN ACTS—SPECIALTIES

Between Acts II. and III.—Helen McCabe.

Between Acts III. and IV.—James A. Callahan.

In a Bit of Nonsense.

After Act IV.—Una Pelham.

WAIT FOR ERMANI.

EXECUTIVE STAFF

William Sherman,
L. L. Greene,
Henry Burton,
J. A. Callahan,
J. C. Coners,
Harry Mairs,
J. A. Catham,

Business Manager
Stage Manager
Musical Director
Master of Transportation
Agent

The Piano used in this theatre is the Genuine GERHARD HEINTZMAN from the Waterworks of W. McPHILLIPS, 189 Dundas St.

EXTRA! EXTRA!

This Act has been engaged at an extra expense of \$200 per week, and will positively appear at every performance.

ERMANI

...The Dainty Dancer...

In her Beautiful, Bewildering and Spectacular Dances.

- 1.—Dance of All Nations.
- 2.—L'Etoile de nuit.
- 3.—La Dance du Vesuvius.
- 4.—The Chameleon and Butterfly Dance.
- 5.—Lily of the Nile.

Introducing her new dance, **DANCE OF ALL NATIONS**, which will follow immediately after the last act, for which the audience is requested to kindly keep their seats.

TO-MORROW NIGHT,

The Sensational Melodrama "The Great Diamond Robbery"

Don't Forget Matinee Saturday.

