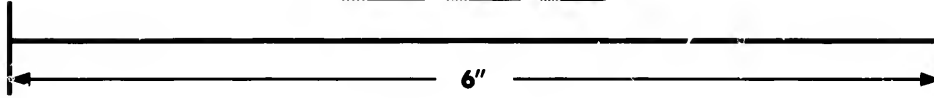
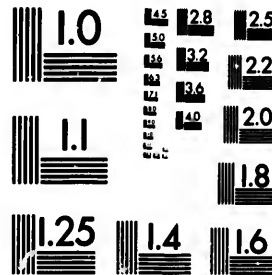
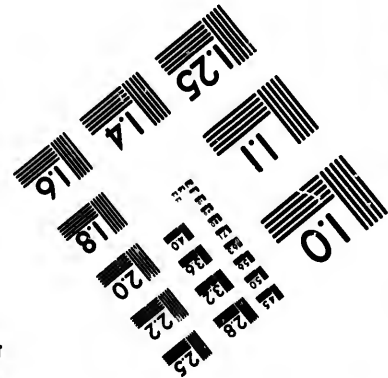


**IMAGE EVALUATION
TEST TARGET (MT-3)**



Canadi



**Photographic
Sciences
Corporation**

23 WEST MAIN STREET
WEBSTER, N.Y. 14580
(716) 872-4503

**CIHM/ICMH
Microfiche
Series.**

**CIHM/ICMH
Collection de
microfiches.**



Canadian Institute for Historical Microreproductions / Institut canadien de microreproductions historiques

© 1987

Technical and Bibliographic Notes/Notes techniques et bibliographiques

The Institute has attempted to obtain the best original copy available for filming. Features of this copy which may be bibliographically unique, which may alter any of the images in the reproduction, or which may significantly change the usual method of filming, are checked below.

L'Institut a microfilmé le meilleur exemplaire qu'il lui a été possible de se procurer. Les détails de cet exemplaire qui sont peut-être uniques du point de vue bibliographique, qui peuvent modifier une image reproduite, ou qui peuvent exiger une modification dans la méthode normale de filmage sont indiqués ci-dessous.

- | | |
|--|--|
| <input type="checkbox"/> Coloured covers/
Couverture de couleur | <input type="checkbox"/> Coloured pages/
Pages de couleur |
| <input type="checkbox"/> Covers damaged/
Couverture endommagée | <input type="checkbox"/> Pages damaged/
Pages endommagées |
| <input type="checkbox"/> Covers restored and/or laminated/
Couverture restaurée et/ou pelliculée | <input type="checkbox"/> Pages restored and/or laminated/
Pages restaurées et/ou pelliculées |
| <input type="checkbox"/> Cover title missing/
Le titre de couverture manque | <input checked="" type="checkbox"/> Pages discoloured, stained or foxed/
Pages décolorées, tachetées ou piquées |
| <input type="checkbox"/> Coloured maps/
Cartes géographiques en couleur | <input type="checkbox"/> Pages detached/
Pages détachées |
| <input type="checkbox"/> Coloured ink (i.e. other than blue or black)/
Encre de couleur (i.e. autre que bleue ou noire) | <input checked="" type="checkbox"/> Showthrough/
Transparence |
| <input type="checkbox"/> Coloured plates and/or illustrations/
Planches et/ou illustrations en couleur | <input type="checkbox"/> Quality of print varies/
Qualité inégale de l'impression |
| <input type="checkbox"/> Bound with other material/
Relié avec d'autres documents | <input type="checkbox"/> Includes supplementary material/
Comprend du matériel supplémentaire |
| <input type="checkbox"/> Tight binding may cause shadows or distortion
along interior margin/
La reliure serrée peut causer de l'ombre ou de la
distorsion le long de la marge intérieure | <input type="checkbox"/> Only edition available/
Seule édition disponible |
| <input type="checkbox"/> Blank leaves added during restoration may
appear within the text. Whenever possible, these
have been omitted from filming/
Il se peut que certaines pages blanches ajoutées
lors d'une restauration apparaissent dans le texte,
mais, lorsque cela était possible, ces pages n'ont
pas été filmées. | <input type="checkbox"/> Pages wholly or partially obscured by errata
slips, tissues, etc., have been refilmed to
ensure the best possible image/
Les pages totalement ou partiellement
obscurcies par un feuillet d'errata, une pelure,
etc., ont été filmées à nouveau de façon à
obtenir la meilleure image possible. |
| <input checked="" type="checkbox"/> Additional comments:/
Commentaires supplémentaires:
[Printed ephemera] 1 sheet, [2] p. | |

This item is filmed at the reduction ratio checked below/
Ce document est filmé au taux de réduction indiqué ci-dessous.

10X	14X	18X	22X	26X	30X
<input type="checkbox"/>	<input type="checkbox"/>	<input type="checkbox"/>	<input type="checkbox"/>	<input checked="" type="checkbox"/>	<input type="checkbox"/>
12X	16X	20X	24X	28X	32X

The copy filmed here has been reproduced thanks to the generosity of:

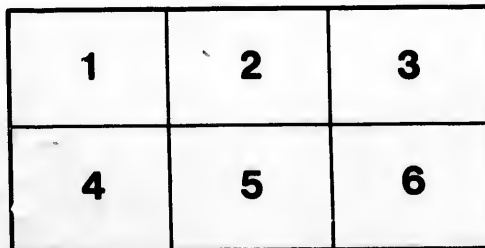
Metropolitan Toronto Library
Canadian History Department

The images appearing here are the best quality possible considering the condition and legibility of the original copy and in keeping with the filming contract specifications.

Original copies in printed paper covers are filmed beginning with the front cover and ending on the last page with a printed or illustrated impression, or the back cover when appropriate. All other original copies are filmed beginning on the first page with a printed or illustrated impression, and ending on the last page with a printed or illustrated impression.

The last recorded frame on each microfiche shell contain the symbol → (meaning "CONTINUED"), or the symbol ∇ (meaning "END"), whichever applies.

Maps, plates, charts, etc., may be filmed at different reduction ratios. Those too large to be entirely included in one exposure are filmed beginning in the upper left hand corner, left to right and top to bottom, as many frames as required. The following diagrams illustrate the method:



L'exemplaire filmé fut reproduit grâce à la générosité de:

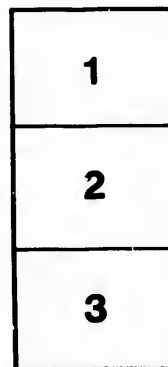
Metropolitan Toronto Library
Canadian History Department

Les images suivantes ont été reproduites avec le plus grand soin, compte tenu de la condition et de la netteté de l'exemplaire filmé, et en conformité avec les conditions du contrat de filmage.

Les exemplaires originaux dont la couverture en papier est imprimée sont filmés en commençant par le premier plat et en terminant soit par la dernière page qui comporte une empreinte d'impression ou d'illustration, soit par le second plat, selon le cas. Tous les autres exemplaires originaux sont filmés en commençant par la première page qui comporte une empreinte d'impression ou d'illustration et en terminant par la dernière page qui comporte une telle empreinte.

Un des symboles suivants apparaîtra sur la dernière image de chaque microfiche, selon le cas: le symbole → signifie "A SUIVRE", le symbole ∇ signifie "FIN".

Les cartes, planches, tableaux, etc., peuvent être filmés à des taux de réduction différents. Lorsque le document est trop grand pour être reproduit en un seul cliché, il est filmé à partir de l'angle supérieur gauche, de gauche à droite, et de haut en bas, en prenant le nombre d'images nécessaire. Les diagrammes suivants illustrent la méthode.



CONFIDENTIAL CIRCULAR FOR AGENTS ONLY.

CATALOGUE
OF
MAPS, CHARTS AND BOOKS

FURNISHED BY

JAMES SPENCER,
PUBLISHER,

65 COLBORNE STREET,

TORONTO, ONT.

Branch Office:—10 St. James Street, Montreal, P. Q.

ESTABLISHED IN 1870.

WHOLESALE. RETAIL.

Maps.

Colored, Varnished and Mounted on Rollers.

America—(Engraved on steel). A very comprehensive Map, showing the United States and Territories—British America—Dominion of Canada,—Mexico—West India and part of South America. Everything is clear and distinct. The principal Railroads, including the Union and Central Pacific Railways, with most important cities and towns, are clearly presented. Also the route of the proposed Canadian Pacific and Northern and Southern Pacific Railroads. A valuable table of distances between important points is added. Illustrated by appropriate engravings and neat border.

Size 28x36.

Europe and Northern Africa—(Engraved on steel), same scale as the Map of America. Showing the most recent changes in Boundaries, principal Railways, Cities Towns, Suez Canal, &c. Bordered by groups showing the different National Costumes.

Size 28x36.

Charts.

Colored, Varnished and Mounted on Rollers.

Scenes in the Life of Our Saviour. This is the largest and handsomest Religious Chart published in this country. Printed from twelve full size engravings, on fine paper, beautifully colored, illustrating the leading events in Christ's Life, His birth, First Miracle, Baptism, Teachings, Death and Resurrection. It is an instructive and ornamental teacher, a speaking picture to young and old. A number of our best agents make a specialty of this Chart and find it very salable.

Size 36x39½

The Last Supper of Our Lord. An artistic series of designs, illustrating this interesting event, surrounded by the text describing it, in elaborate ornamental lettering, originally engraved on copper. Salable to every Christian family.

Size 28x36.

The Crucifixion of Our Lord. A very striking illustration of the scene on Calvary, the Disciples and the Marys among the multitude; the Soldiers casting dice for our Saviour's garment; the Scribes and Pharisees gathered around, with descriptive matter and texts in the border.

Size 28x36.

The Resurrection of Our Lord. This Chart illustrates the scene at the time the Marys approached the sepulchre; the Angel sitting on the stone which was rolled away; the Roman soldiers confounded and as "dead men," and Jesus watching the Marys from a little distance. Jerusalem is seen in the background.

Size 28x36.

These three Charts, Last Supper, Crucifixion and Resurrection, form a valuable set, selling well together, and in large numbers. Printed from engravings on copper.

40	100
4	4
45	100
30	75
4	4
4	4

3. 20. 10. 11. 12.
A \$25 SILVER WATCH FREE TO EVERY AGENT.

SPENCER'S

NEW REVERSIBLE

Map of the Dominion of Canada

And NORTH AMERICA.

SIZE, 46 X 35 INCHES.

NEW EDITION.

The formation of the Dominion gave a very general call for a Map that would show the whole of our country. I prepared such a Map, and the sales have exceeded my expectations,—nearly 10,000 having been sold within a few months in the Cities and Towns alone! The demand for this Map is yet great, and Agents are meeting with larger sales than ever.

The Map is compiled from the most recent Government Surveys, and may be relied on as correct.

It shows all the Cities, Towns and Post Villages in the Dominion.

ALL the Railways and Canals, whether completed or IN PROCESS OF CONSTRUCTION are plainly marked.

The divisions into New Counties; the New Townships, Free Grant Lands, and all the latest Government Surveys are given on this Map.

In columns is given the Dominion Census of 1871, by Cities and Counties; also, Tables showing the distance from Station to Station on every Railroad in Canada.

The Map can be made to revolve on the wall so as to show either side without taking it down, in the following way:—Tie a loop in the tape that is on the middle of the top roller, and hang the Map by the loop on the wall. Take hold of the bottom roller and pull the Map out from the wall, and you can twist it over without any difficulty.

On the back of this Map is shown a Map of British America, United States, Mexico, Central America and West Indies; also a fine Map of Southern, Central and Western Europe; and a Map of the World on Mercator's Projection.

The Map of British America plainly and correctly shows the New Province of Manitoba; also, British Columbia and Vancouver's Island, together with all the British Possessions and settlements in North America; also, the proposed Canada Pacific Railroad to British Columbia, to help build which is one of the pledges of the Dominion Government, in consideration that British Columbia would become a part of the Dominion of Canada.

In the United States part of the Map is shown all the New Territories of the United States; all the Railroads, (the great Pacific Railway to California among the rest); Tables of Distances to all parts of the world; Ship Routes, and much other useful and instructive matter.

Tables are given, showing the extent, population and capital of the different governments of North America, South America and West Indies; also the last Census of the United States; and tables of distances to all the principal cities of the World.

The Map is printed from steel plate engravings, and every letter and line is perfectly distinct. It is

ounded and as "dead men," and Jesus watching the Marys from a little distance. Jerusalem is seen in the background.

Size 28x36.

These three Charts, Last Supper, Crucifixion and Resurrection, form a valuable set, selling well together, and in large numbers, printed from engravings on copper.

Bible Scenes. Eight illustrations of Scenes in Bible History, from the Lifting Up of the Brazen Serpent by Moses, to the Crucifixion of our Lord, artistically grouped in an elaborate scrollwork setting, with descriptive texts.

Size 28x36.

Scenes in the Life of Christ. Eleven engravings of Incidents in Our Saviour's Life, including a copy of the celebrated "Ecce Homo," designed by an English artist; surrounded by an ecclesiastical border.

Size 28x36.

The Cross of Jesus. New. The principal incidents in the life of Our Saviour from the Annunciation to the Virgin Mary to his Ascension to Heaven, are depicted in engravings 4x3 inches, arranged in course in the form of a cross, surrounded by an emblematical border. Copies of the celebrated paintings "Ecce Homo" and Raphael's "Madonna and Child," are on other side of the base, and the Ten Commandments, Lord's Prayer, and Apostles' Creed, are in appropriate situations. The above is a showy and salable Chart.

Size 28x36.

World at one View. The most comprehensive Chart ever issued. A Map of the World, portraits of principal varieties of the human race, illustrations of the male and female costumes of the different parts of the world, coats of almost every country, universal dial plate, comparative height of different mountains, with valuable statistical and historical letters press and other interesting features combined, make a Chart both useful, ornamental and salable.

Size 28x36.

A MAGNIFICENT CHROMO-LITHOGRAPH

"The Infant Saviour with Mary and Joseph."

SIZE 28x36 INCHES.

Varnished and Mounted on Rollers.

25⁰⁰
4
4
4
4

Books.

~~The Wedding Gift~~ - a handsome gilt edged Manual, containing valuable advice to all about to marry. Suitable for a wedding present.....

~~The Complete Farrier, or Horse Doctor~~; a Guide for the Treatment of Diseases of Horses; to which are added valuable hints for choosing a good Horse, and directions for his training. 64 pp.....

~~Farmer's Guide in the Management of Domestic Animals, and the Treatment of their Diseases~~: a Treatise on Horses, Mules, Neat Cattle, Sheep, Swine, Foultry, Bees, &c., &c. 100 pp.....

~~Frugal Housekeeper's Kitchen Companion~~; or, ~~Guide to Economical Cookery~~; containing instructions how to Cook Everything. 100 pp.....

~~Family Doctor~~ - containing a Description of the Principal Diseases to which most persons in this country are liable, together with their Treatment and Cure, simplified so that every man can be his own Doctor. 100 pp.....

~~Family Recipe Book~~ - a New Collection of 500 Rare and Valuable Recipes for the Production and Use of Things essential to the Health, Wealth, Comfort, and Convenience of every Householder. - 100 pp.....

45⁰⁰ 150
12/2 25⁰⁰
4
4
4

roads, (the great Pacific Railway to California among the rest); Railways, and
Ship Routes, and much other useful and instructive matter.

Tables are given, showing the extent, population and capital of the different governments of North America, South America and West Indies; also the last Census of the United States; and tables of distances to all the principal cities of the World.

The Map is printed from steel plate engravings, and every letter and line is perfectly distinct. It is beautifully colored in Counties and Townships, varnished and handsomely mounted on Rollers, and will be sent to any part of the Dominion on receipt of the price, which, in view of the large sale they are having, is fixed at only \$2.00.

AGENTS WANTED.

Agents will find this something new and attractive to offer; and as this is *the only* Map showing the *whole* Dominion, it will have a very large sale among the farmers, mechanics, merchants, and professional men throughout the Dominion, and as the price is so very low for such a Map, Agents can take them along with them and sell and deliver at the same time.

This Map has heretofore sold to Agents at \$1.25 each, but since I have had it revised and corrected (which adds much to its appearance) I have concluded to reduce the price to Agents to \$12 per dozen. This will allow the Agent the unusual profit of 100 per cent or \$1 on every Map he sells. I have Agents who have been selling over 100 Maps every month since the Map was first issued.

A \$25.00 SILVER WATCH FREE

The enormous sale this Map is having, enables me not only to furnish better Maps, and cheaper than any other, but also to give to every Agent—free of Charge—a fine *Coin Silver*, Hunting Cased Patent Lever Watch, in good running order, and guaranteed one year to be a good time keeper, who will sell 100 Maps within *two months*, after the sample copy is ordered. By selling *four* Maps a day the whole hundred copies would be disposed of in *one* month, thus giving the Agent a profit of \$100.00 in cash, besides a good, reliable watch.

Agents wishing a Sample Copy of the Map, will be charged the retail price (\$2), but with their first order for a dozen or more Maps, an extra copy will be put in, thus reducing the sample copy to wholesale price.

In ordering Maps you will find Registered Letters or Post Office Money Orders will be the safest and cheapest way of sending the money, which should always accompany the order. Those wishing Maps sent by Express, to be collected on delivery, must enclose 10 per cent. of the amount of the order, which will be deducted from the bill, and take the Maps out of the Express Office soon after their arrival.

I am confident that travelling Agents cannot find a better chance to make money than by selling this Map.

JAMES SPENCER, *Publisher*,

65 Colborne St., Toronto, Ont.

N. B. A liberal reward to any person securing us a good Agent.

