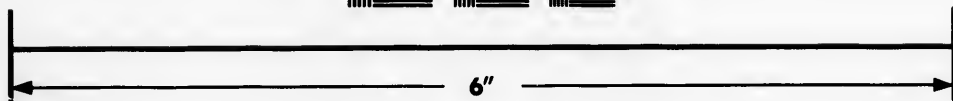
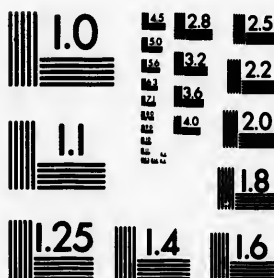


**IMAGE EVALUATION
TEST TARGET (MT-3)**



**Photographic
Sciences
Corporation**

23 WEST MAIN STREET
WEBSTER, N.Y. 14580
(716) 872-4503

**CIHM/ICMH
Microfiche
Series.**

**CIHM/ICMH
Collection de
microfiches.**



Canadian Institute for Historical Microreproductions / Institut canadien de microreproductions historiques

© 1983

Technical and Bibliographic Notes/Notes techniques et bibliographiques

The Institute has attempted to obtain the best original copy available for filming. Features of this copy which may be bibliographically unique, which may alter any of the images in the reproduction, or which may significantly change the usual method of filming, are checked below.

L'Institut a microfilmé le meilleur exemplaire qu'il lui a été possible de se procurer. Les détails de cet exemplaire qui sont peut-être uniques du point de vue bibliographique, qui peuvent modifier une image reproduite, ou qui peuvent exiger une modification dans la méthode normale de filmage sont indiqués ci-dessous.

- Coloured covers/
Couverture de couleur
- Covers damaged/
Couverture endommagée
- Covers restored and/or laminated/
Couverture restaurée et/ou pelliculée
- Cover title missing/
Le titre de couverture manque
- Coloured maps/
Cartes géographiques en couleur
- Coloured ink (i.e. other than blue or black)/
Encre de couleur (i.e. autre que bleue ou noire)
- Coloured plates and/or illustrations/
Planches et/ou illustrations en couleur
- Bound with other material/
Relié avec d'autres documents
- Tight binding may cause shadows or distortion along interior margin/
La reliure serrée peut causer de l'ombre ou de la distortion le long de la marge intérieure
- Blank leaves added during restoration may appear within the text. Whenever possible, these have been omitted from filming/
Il se peut que certaines pages blanches ajoutées lors d'une restauration apparaissent dans le texte, mais, lorsque cela était possible, ces pages n'ont pas été filmées.
- Additional comments:/
Commentaires supplémentaires:

- Coloured pages/
Pages de couleur
- Pages damaged/
Pages endommagées
- Pages restored and/or laminated/
Pages restaurées et/ou pelliculées
- Pages discoloured, stained or foxed/
Pages décolorées, tachetées ou piquées
- Pages detached/
Pages détachées
- Showthrough/
Transparence
- Quality of print varies/
Qualité inégale de l'impression
- Includes supplementary material/
Comprend du matériel supplémentaire
- Only edition available/
Seule édition disponible
- Pages wholly or partially obscured by errata slips, tissues, etc., have been refilmed to ensure the best possible image/
Les pages totalement ou partiellement obscurcies par un feuillet d'errata, une pelure, etc., ont été filmées à nouveau de façon à obtenir la meilleure image possible.

This item is filmed at the reduction ratio checked below/
Ce document est filmé au taux de réduction indiqué ci-dessous.

| | | | | | | | | | | | |
|-----|-----|-----|-----|-----|-----|-----|-----|-----|-----|-----|-----|
| 10X | 12X | 14X | 16X | 18X | 20X | 22X | 24X | 26X | 28X | 30X | 32X |
| | | ✓ | | | | | | | | | |

The c
to the

The i
poss
of the
filmi

Orig
begi
the l
sion,
other
first
sion,
or ill

The l
shall
TINU
whic

Maps
differ
entire
begi
right
requ
meth

The copy filmed here has been reproduced thanks to the generosity of:

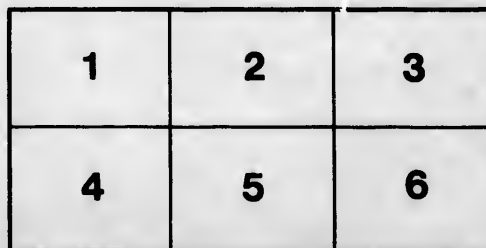
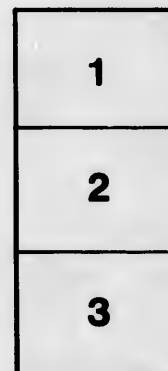
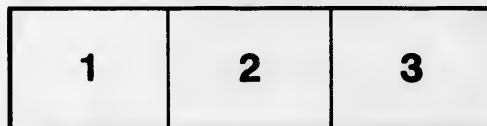
Metropolitan Toronto Library
Canadian History Department

The images appearing here are the best quality possible considering the condition and legibility of the original copy and in keeping with the filming contract specifications.

Original copies in printed paper covers are filmed beginning with the front cover and ending on the last page with a printed or illustrated impression, or the back cover when appropriate. All other original copies are filmed beginning on the first page with a printed or illustrated impression, and ending on the last page with a printed or illustrated impression.

The last recorded frame on each microfiche shall contain the symbol \rightarrow (meaning "CONTINUED"), or the symbol ∇ (meaning "END"), whichever applies.

Maps, plates, charts, etc., may be filmed at different reduction ratios. Those too large to be entirely included in one exposure are filmed beginning in the upper left hand corner, left to right and top to bottom, as many frames as required. The following diagrams illustrate the method:



L'exemplaire filmé fut reproduit grâce à la générosité de:

Metropolitan Toronto Library
Canadian History Department

Les images suivantes ont été reproduites avec le plus grand soin, compte tenu de la condition et de la netteté de l'exemplaire filmé, et en conformité avec les conditions du contrat de filmage.

Les exemplaires originaux dont la couverture en papier est imprimée sont filmés en commençant par le premier plat et en terminant soit par la dernière page qui comporte une empreinte d'impression ou d'illustration, soit par le second plat, selon le cas. Tous les autres exemplaires originaux sont filmés en commençant par la première page qui comporte une empreinte d'impression ou d'illustration et en terminant par la dernière page qui comporte une telle empreinte.

Un des symboles suivants apparaîtra sur la dernière image de chaque microfiche, selon le cas: le symbole \rightarrow signifie "A SUIVRE", le symbole ∇ signifie "FIN".

Les cartes, planches, tableaux, etc., peuvent être filmés à des taux de réduction différents. Lorsque le document est trop grand pour être reproduit en un seul cliché, il est filmé à partir de l'angle supérieur gauche, de gauche à droite, et de haut en bas, en prenant le nombre d'images nécessaire. Les diagrammes suivants illustrent la méthode.

re
détails
es du
modifier
er une
filmage

es

e

y errata
d to

at
e pelure,
çon à





TORONTO, LOOKING EAST

TORONTO



**THE QUEEN CITY
OF CANADA.**

**THE IDEAL
RESIDENTIAL CITY OF THIS CONTINENT.**

ALEXANDER & CABLE CO. LTD. TORONTO

Facts About T

The City of Toronto is situated upon the northern plateau gently ascending north for a distance of 220 feet above the lake level is reached. It extends generally level. The River Don flows through the east. Humber is immediately to the west of its western limit. winter as in some of the eastern Canadian cities, and in grateful breezes which blow from off the cool waters of Limits is 10,391 acres, or 16.2 square miles.

In this area there is a population of 220,000 by City Directory census, 1897.

There are 256 miles of streets, including asphalt, brick, macadam and broken stone roadways.

228 miles of sewers.

248 miles of water mains.

Annual Revenue from Waterworks, 1896, \$454,000. Water always fresh, cold, and good, 7,000,000,000 gallons supplied annually

225 miles of gas mains.

120 miles of underground electric conduit.

80 miles of steam railway track.

85 miles of Street Railway track.

Number of passengers carried by Street Railway Company during 1896, 23,537,911.

The estimated value of property owned by the City is over \$8,400,000.

Total assessment of property in City (1897), \$129,995,522.

Property in city exempt from taxation, value, \$22,158,516.

Value of buildings erected during 1895, \$1,346,810.

Number of Policemen, 257.

Registered attendance at the Public Schools in 1896, 28,000.

Annual cost (1896), \$486,596.96.

Public school teachers, 600.

Number of Firemen, 170.

Attendance at Separate (R.C.) Schools in 1896, 4748; teachers, 88.

Attendance at Universities and Colleges in 1896 (Directory census), about 6,000.

As a SUMMER RESORT, Toronto is pre-eminent in America—within three hours' sail of Niagara Falls; daily Islands of the St. Lawrence, Montreal, Hamilton, St. Catharines, and pleasure resorts which line the shores of the Humber and Trent Valley waters. First-Class and ample Hotel accommodations in the city.

Compiled by Alderman Daniel Lamb, and issued by the

Atten
cost (18
Catho
Churc
Licen
Theat
Publi
cost (18
Area
Free
Free
Atten
given, \$
Value
June, 1
Bank
Busin
Bell

Num
Num
Num
Num
Man
exempt
provid

About Toronto

uated upon the northern shore of Lake Ontario, on a for a distance of three miles, where an altitude of about ched. It extends about eight miles along the lake, and is ws through the eastern part of the City, and the River of its western limit. THE CLIMATE is not as extreme in dian cities, and in summer the heat is tempered by the the cool waters of the lake. The area within the City miles.

y Direct- Attendance at High Schools, 1,000; teachers, 33; annua
t, brick, cost (1896), \$40,481.00
Cathedrals in city, 2 (St. James' and St. Michael's).
Churches in city (all denominations), 182.
Licensed hotels and saloons, 150.
Theatres and Music Halls, 7.
Public Library, 97,820 books; circulation, 553,000; annual
Water al- cost (1896), \$32,000.
annually Area Public Parks and Gardens, 1,114½ acres.
Free band concerts in Parks in summer.
Free Public Markets; no Toll Gates.
Attendance at Industrial Exhibition, 1896, 303,000; prizes
Company given, \$34,460.00.
y is over Value of goods imported into Toronto (year July, 1894, to
June, 1895), \$18,524,555.75.
5,522. Bank Clearing House total for 1896, \$342,031,851.00.
58,516. Business Commercial Ratings for City, 6,300.
Bell Telephone Subscribers in City, 5,100.

6, 28,000.

6, 4748;

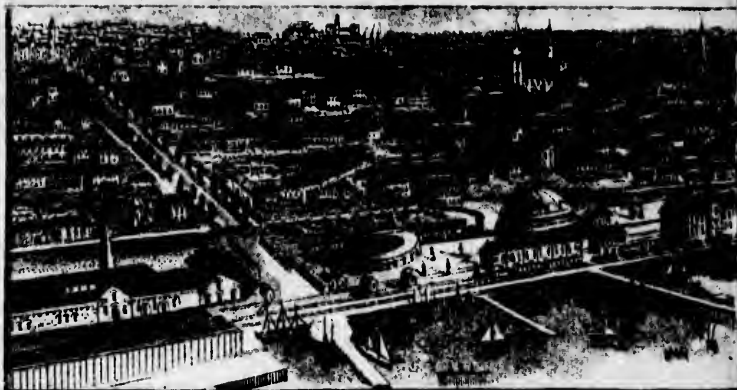
Directory

POSTAL BUSINESS, 1896

Number of Letters delivered by Letter Carriers, 16,825,756.
Number of letters posted at Toronto, 15,639,572.
Number of postcards posted at Toronto, 4,251,988.
Number of books, circulars, etc., posted at Toronto, 9,879,506.
Manufacturers wishing to locate new industries receive
exemptions from taxation; special water rates; suitable sites
provided at very low rentals.

nto is pre-eminently the most favorably situated city in
Niagara Falls; daily steamers to the far-famed Thousand
l, Hamilton, St. Catharines, Oakville, and the innumerable
ine the shores of the lake; fast express trains land the
st of the famous Hunting and Fishing Grounds of Muskoka
s and ample Hotel accommodation is always to be had in

Daniel Lamb, and issued by the City Council of Toronto.



List of some of the Conventions, Entertainments and Celebrations to be held in Toronto in 1897

- April 20th to 22nd**—"Ontario Educational Association."
April 29th, 30th, and May 1st—"Toronto Horse Show."
May—"Order of Railroad Trainmen."
May 22nd to 29th—"Ontario Jockey Club Spring Meet."
June—"Queen's Jubilee Celebration."
 " Cabot Celebration."
 " Ontario Health Officers' Association."
July 14th, and following days—"Epworth League." 20,000 delegates expected.
July 7th to 14th—"International Association of Charities and Corrections."
August—"British Ass'n for the Advancement of Science."
 " Photographers' Association."
September—August 30th to September 11th—"Canada's Great Victorian Era Exposition." There is a possibility of this event being extended to open on August 17th. Full information upon application to the Manager, Toronto. During the period of the Exposition there will be held Manufacturers', Agriculturists', Dairymen, and other important Conventions.
October 20th to 22nd—"Women's Christian Temperance Union." (Dominion meeting.)
October 23rd to 26th—"Women's Christian Temperance Union." (World's meeting.)
November—"Chrysanthemum Show."
December 1st and following days—"Sons of Temperance."

1896. Toronto

