

**CIHM  
Microfiche  
Series  
(Monographs)**

**ICMH  
Collection de  
microfiches  
(monographies)**



**Canadian Institute for Historical Microreproductions / Institut canadien de microreproductions historiques**

**© 1996**

Technical and Bibliographic Notes / Notes techniques et bibliographiques

The Institute has attempted to obtain the best original copy available for filming. Features of this copy which may be bibliographically unique, which may alter any of the images in the reproduction, or which may significantly change the usual method of filming, are checked below.

L'Institut a microfilmé le meilleur exemplaire qu'il lui a été possible de se procurer. Les détails de cet exemplaire qui sont peut-être uniques du point de vue bibliographique, qui peuvent modifier une image reproduite, ou qui peuvent exiger une modification dans la méthode normale de filmage sont indiqués ci-dessous.

Coloured covers/  
Couverture de couleur

Covers damaged/  
Couverture endommagée

Covers restored and/or laminated/  
Couverture restaurée et/ou pelliculée

Cover title missing/  
Le titre de couverture manque

Coloured maps/  
Cartes géographiques en couleur

Coloured ink (i.e. other than blue or black)/  
Encre de couleur (i.e. autre que bleue ou noire)

Coloured plates and/or illustrations/  
Planches et/ou illustrations en couleur

Bound with other material/  
Relié avec d'autres documents

Tight binding may cause shadows or distortion along interior margin/  
La reliure serrée peut causer de l'ombre ou de la distorsion le long de la marge intérieure

Blank leaves added during restoration may appear within the text. Whenever possible, these have been omitted from filming/  
Il se peut que certaines pages blanches ajoutées lors d'une restauration apparaissent dans le texte, mais, lorsque cela était possible, ces pages n'ont pas été filmées.

Additional comments: /  
Commentaires supplémentaires:

Coloured pages/  
Pages de couleur

Pages damaged/  
Pages endommagées

Pages restored and/or laminated/  
Pages restaurées et/ou pelliculées

Pages discoloured, stained or foxed/  
Pages décolorées, tachetées ou piquées

Pages detached/  
Pages détachées

Showthrough/  
Transparence

Quality of print varies/  
Qualité inégale de l'impression

Continuous pagination/  
Pagination continue

Includes index(es)/  
Comprend un (des) index

Title on header taken from: /  
Le titre de l'en-tête provient:

Title page of issue/  
Page de titre de la livraison

Caption of issue/  
Titre de départ de la livraison

Masthead/  
Générique (périodiques) de la livraison

This item is filmed at the reduction ratio checked below/  
Ce document est filmé au taux de réduction indiqué ci-dessous.

10X	14X	18X	22X	26X	30X
<input type="checkbox"/>	<input type="checkbox"/>	<input checked="" type="checkbox"/>	<input type="checkbox"/>	<input type="checkbox"/>	<input type="checkbox"/>
12X	16X	20X	24X	28X	32X

The copy filmed here has been reproduced thanks to the generosity of:

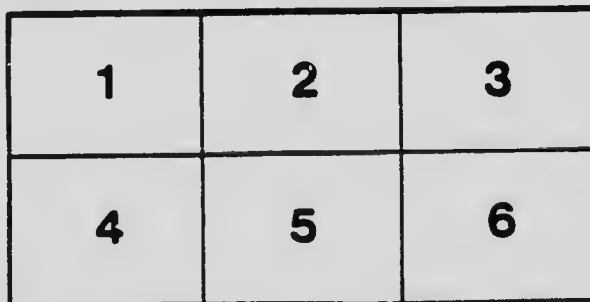
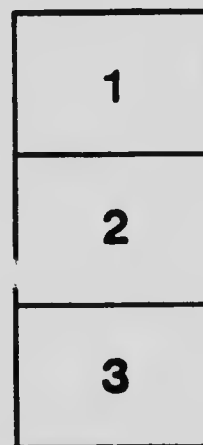
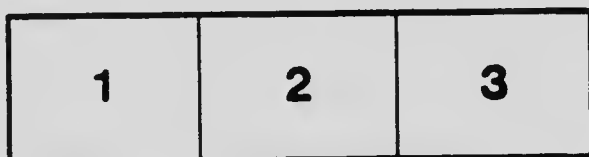
Metropolitan Toronto Reference Library

The images appearing here are the best quality possible considering the condition and legibility of the original copy and in keeping with the filming contract specifications.

Original copies in printed paper covers are filmed beginning with the front cover and ending on the last page with a printed or illustrated impression, or the back cover when appropriate. All other original copies are filmed beginning on the first page with a printed or illustrated impression, and ending on the last page with a printed or illustrated impression.

The last recorded frame on each microfiche shall contain the symbol  $\rightarrow$  (meaning "CONTINUED"), or the symbol  $\nabla$  (meaning "END"), whichever applies.

Maps, plates, charts, etc., may be filmed at different reduction ratios. Those too large to be entirely included in one exposure are filmed beginning in the upper left hand corner, left to right and top to bottom, as many frames as required. The following diagrams illustrate the method:



L'exemplaire filmé fut reproduit grâce à la générosité de:

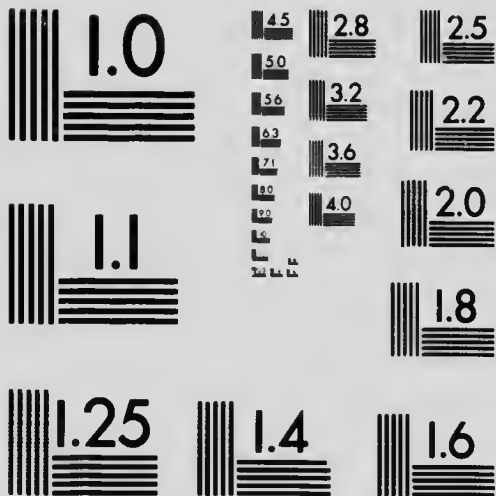
Bibliothèque de référence de la communauté urbaine de Toronto

Les images suivantes ont été reproduites avec le plus grand soin, compte tenu de la condition et de la netteté de l'exemplaire filmé, et en conformité avec les conditions du contrat de filmage.

Les exemplaires originaux dont la couverture en papier est imprimée sont filmés en commençant par le premier plat et en terminant soit par la dernière page qui comporte une empreinte d'impression ou d'illustration, soit par le second plat, selon le cas. Tous les autres exemplaires originaux sont filmés en commençant par la première page qui comporte une empreinte d'impression ou d'illustration et en terminant par la dernière page qui comporte une telle empreinte.

Un des symboles suivants apparaîtra sur la dernière image de chaque microfiche, selon le cas: le symbole  $\rightarrow$  signifie "A SUIVRE", le symbole  $\nabla$  signifie "FIN".

Les cartes, planches, tableaux, etc., peuvent être filmés à des taux de réduction différents. Lorsque le document est trop grand pour être reproduit en un seul cliché, il est filmé à partir de l'angle supérieur gauche, de gauche à droite, et de haut en bas, en prenant le nombre d'images nécessaire. Les diagrammes suivants illustrent la méthode.



MICROCOPY RESOLUTION TEST CHART  
 NATIONAL BUREAU OF STANDARDS  
 STANDARD REFERENCE MATERIAL 1010a  
 (ANSI and ISO TEST CHART No. 2)

CONSTITUTION  
AND  
GENERAL REGULATIONS  
OF THE  
GRAND CHAPTER  
OF  
**Royal Arch Masons**  
OF CANADA

*As amended, revised and adopted at the Forty-fifth Annual  
Convocation, held in Toronto, January 28th, A.I.  
2433, A.D. 1903, and ordered to be pub-  
lished by Grand Chapter.*

TORONTO  
PRESS OF THE HUNTER, ROSE COMPANY, LIMITED  
1903

139183

# The Grand Chapter of Canada

*The Grand Chapter having resolved:*

That a new edition of the Book of Constitution adopted by the Grand Chapter be forthwith printed, the Grand Scribe E. has, in accordance with that resolution, superintended the publication of this edition.

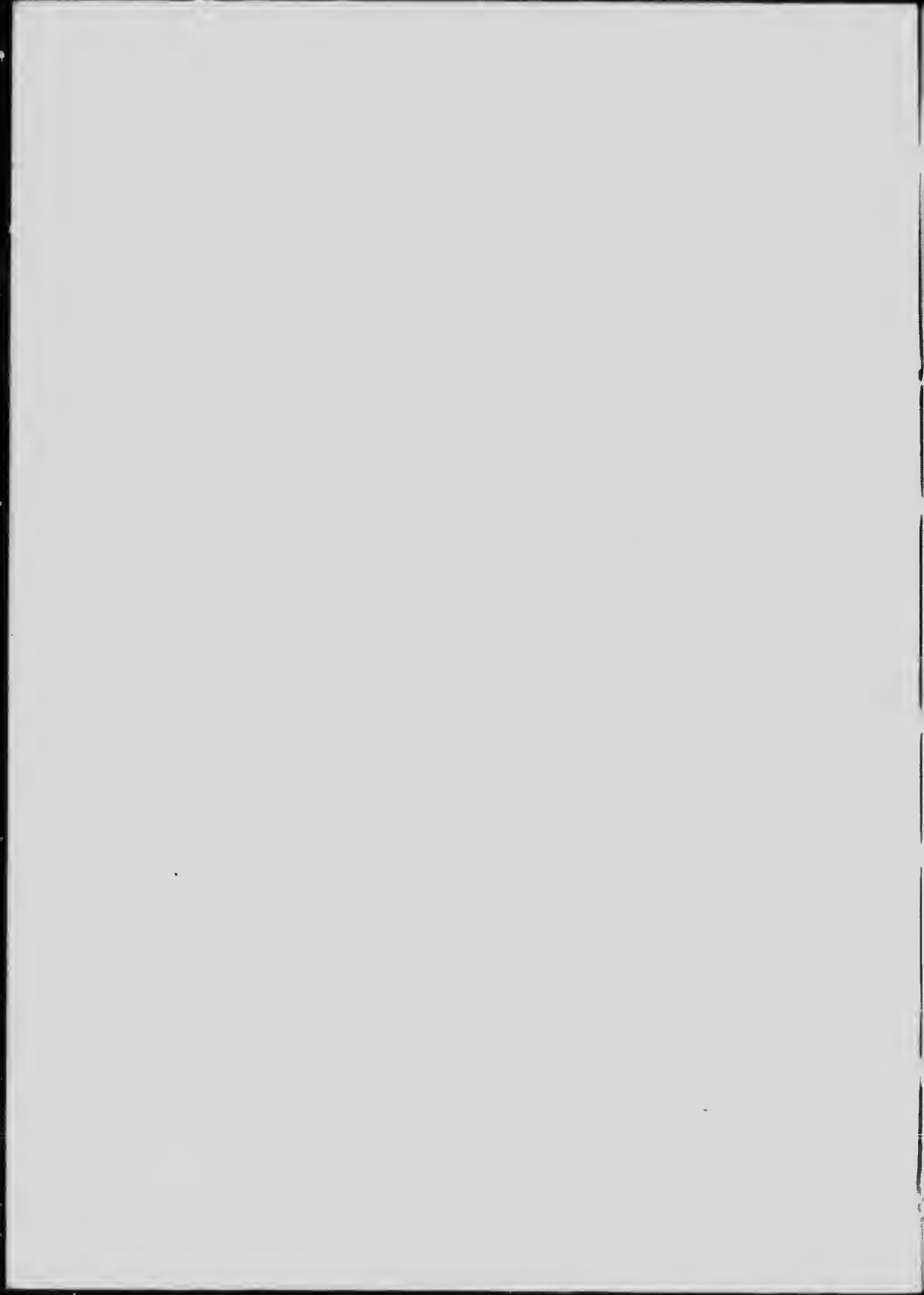


OFFICE OF THE GRAND SCRIBE E.,

*Toronto, February 28th, A.D. 1903.*

*Geo. J. Bennett*

G. S. E.





## TABLE OF CONTENTS

- 1.—Name of Grand Chapter.
- 2.—Jurisdiction.
- 3.—Powers and Authority.
- 4.—Grand Chapter, of Whom Composed.
- 5.—Titles of Officers.
- 6.—Annual Convocation.
- 7.—Emergent Convocations.
- 8.—Quorum, What Constitutes.
- 9.—Officers, How Chosen.
- 10.—Eligibility to Office
- 11.—When Installed.
- 12.—Must be Active Member.
- 13.—Grand Superintendents.
- 14.—Appointed Officers.
- 15.—The Executive Committee.
- 16.—Those Entitled to Vote.
- 17.—Proxy Representation.
- 18.—Officers—Removal—Disqualification.
- 19.—Vacancies, How Filled.
- 20.—Craft Disabilities Prevail.
- 21.—Chapters, Disqualification.
- 22.—Vacancies, How Filled.
- 23.—Rank for Distinguished Service.
- 24.—R. A. Clothing Compulsory.
- 25.—Fealty to Grand Chapter.
- 26.—Powers of Grand First Principal.
- 27.—To Grant Dispensations.
- 28.—To Appoint Grand Representatives.
- 29.—To Decide Legal Questions.
- 30.—To Convene Chapters.
- 31.—To Suspend Warrant or Principal.
- 32.—To Command Grand Officers.
- 33.—To Summon any Chapter.
- 34.—Communications through G. S. E.
- 35.—Presiding in Grand Chapter.
- 36.—Absence of Grand Z.

- 37.—Duties of Grand Second Principal.
- 38.—To Report Official Acts.
- 39.—Duties of Grand Third Principal.
- 40.—Grand Superintendents of Districts.
- 41.—May Preside in every Chapter.
- 42.—May Summon any Chapter.
- 43.—Petitions to be Recommended by Him.
- 44.—Annual Report.
- 45.—Consent to Removal of Chapter.
- 46.—Dispensation for Festivals.
- 47.—Duties of Grand Treasurer.
- 48.—Duties of Grand Scribe E.
- 49.—Duties of Grand Scribe N.
- 50.—Duties of Grand Principal Sojourner.
- 51.—Duties of Grand Senior Sojourner.
- 52.—Duties of Grand Junior Sojourner.
- 53.—Duties of Grand Lecturer.
- 54.—Duties of Grand Janitor.
- 55.—Duties of Executive Committee.
- 56.—Duties of Other Grand Officers.
- 57.—Dues, How Registered.
- 58.—Minimum Fees for Degrees.
- 59.—Fees and Dues Payable to Grand Chapter.
- 60.—Officers—Compensation—Who Shall Receive.
- 61.—Remission of Chapter Dues.
- 62.—Appeals from a Subordinate Chapter.
- 63.—From the Grand First Principal.
- 64.—Grand Lodge Rules to Govern.
- 65.—Chapters—Lodges—Style.
- 66.—Chapter, Consists of.
- 67.—Chapter, How Constituted.
- 68.—Warrant—Name—Seal.
- 69.—Application, Mode of.
- 70.—By-laws to be Framed and Approved.
- 71.—Transference of Warrants.
- 72.—Convocations, Regular.
- 73.—Summons for Emergent Convocation.
- 74.—Election and Appointment of Officers.
- 75.—Quorum Necessary.
- 76.—Chapter Under Dispensation.
- 77.—Chapter Cannot be Called Off.
- 78.—Principals, Eligibility and Qualifications.

- 79.—Chapter, Power of Assembly.
- 80.—Warrant, When Forfeited.
- 81.—Warrant, How Restored.
- 82.—Chapter, Power of Discipline.
- 83.—Instructions to Principals or Proxy.
- 84.—Resolutions Adopted by Chapters.
- 85.—Chapter Officers May Resign.
- 86.—Responsibilities of First Principal.
- 87.—Of Second Principal.
- 88.—Of Third Principal.
- 89.—Of Treasurer.
- 90.—Of Scribe E.
- 91.—Of Other Officers.
- 92.—Eligibility for Membership.
- 93.—Affiliation—Qualification.
- 94.—Jurisdiction—How Obtained.
- 95.—Jurisdiction of a Chapter.
- 96.—Conferring of Subordinate Degrees.
- 97.—Report of Exaltations to Grand Chapter.
- 98.—Visitors—Qualifications.
- 99.—Unaffiliates, Rights of.
- 100.—Companions may Affiliate with any Chapter.
- 101.—Life Membership Permitted.
- 102.—Position of Life Members.
- 103.—Life Members Amenable to Discipline.
- 104.—Honorary Membership.
- 105.—Resignation of Membership.
- 106.—Re-affiliation, How Applied For.
- 107.—Suspension for Non-payment of Dues.
- 108.—Restoration on Payment of Dues.
- 109.—Remission of Dues.
- 110.—Certificates, How Granted.
- 111.—Death of Grand Officers to be Reported.
- 112.—Ballot in Royal Arch Degree.
- 113.—Who may Vote for Admission or at Elections.
- 114.—One Ballot for All Degrees.
- 115.—No Postponement of Ballot.
- 116.—Two Black Balls Exclude.
- 117.—Objection to Advancement—Procedure.
- 118.—Public Processions.
- 119.—Penalty for Violation of Law.
- 120.—The Register Book.

- 121.—The Minute Book.
- 122.—The Visitors' Book.
- 123.—The Scribe E.'s Books.
- 124.—The Treasurer's Cash Book.
- 125.—The Book of Marks.
- 126.—The Book of Laws.
- 127.—Apron—Size, Adornment, etc.
- 128.—Principals' Apron.
- 129.—Grand Officers' Apron.
- 130.—The Sash—Companions.
- 131.—The Sash—Grand Officers.
- 132.—Jewel of Office—Grand Chapter.
- 133.—Jewel of Office—Subordinate Chapters.
- 134.—Regalia—Subordinate Degree.
- 135.—Royal Arch Jewel.
- 136.—Mark Masters' Jewel.
- 137.—Recognized Jewels Only to be Worn.
- 138.—Jewels of Grand Officers.
- 139.—Jewels of Subordinate Chapter Officers
- 140.—Robes for Chapter Officers.
- 141.—Amendments to Constitution.
- 142.—All Previous Laws Repealed.
- 143.—Rules of Order.

**CONSTITUTION**  
AND  
**GENERAL REGULATIONS**  
FOR THE GOVERNMENT OF THE  
**Order of Royal Arch Masons of Canada**

---

*Adopted by Grand Chapter 28th day of January, A.D.  
1903, A.I. 2433.*

---

**ORGANIZATION.**

1.—The name of this Grand Chapter is the Grand Chapter of Royal Arch Masons of Canada.

**JURISDICTION.**

2.—This Grand Chapter is a body of Royal Arch Masons in which is invested the government and care of Capitular Masonry within the Provinces of Ontario, Manitoba and British Columbia, and the North-West Territories in the Dominion of Canada.

**POWERS AND AUTHORITY.**

3.—The Grand Chapter is the highest source of authority in Capitular Masonry in this jurisdiction. In it alone is vested general government and control,

and the power of enacting laws and regulations for the government of all Chapters of Royal Arch Masons and all lodges of Most Excellent Master Masons and Mark Master Masons within the jurisdiction. It has also the inherent power of investigating, regulating, and finally deciding all matters relating to the Royal Arch, the Most Excellent Masters' and Mark Masters' degrees, or of the Subordinate Chapters or individual Companions, either by direct or delegated authority. It grants, under its great seal and the sign manual of its Grand Principals, attested by the Grand Scribe E., Warrants or Charters and dispensations for constituting Chapters of Royal Arch Masons and lodges of Mark and Most Excellent Master Masons, with authority to assign the limits of the several districts, and when expedient suspends or revokes said charters, and alone can, after due summons for trial, expel an offending Companion. It decides all questions of Masonic law, usage and custom, makes, alters, and repeals at pleasure laws for its government and the government and control of its own members, and deals with all appeals that may be made by either individual Companions or Chapters, according to the provisions of the Constitution as authorized by the Grand Chapter. It has the power of discipline, admonition, censure, or instruction over all Chapters. It shall see that the authorized work of the Order is preserved, and that no deviation be permitted either in the work or ceremonials and forms of the Order.

#### OF WHOM COMPOSED.

4.—This Grand Chapter shall be composed of its officers, both elected and appointed, as hereinafter enumerated, and its members shall rank in the following order :—

## ELECTED OFFICERS.

The Grand First Principal or the Grand Z.

The Grand Second Principal or the Grand H.

The Grand Third Principal or the Grand J.

The Grand Superintendents of Districts, viz.:

The Grand Superintendent of the First or St. Clair District.

The Grand Superintendent of the Second or London District.

The Grand Superintendent of the Third or Wilson District.

The Grand Superintendent of the Fourth or Huron District.

The Grand Superintendent of the Fifth or Wellington District.

The Grand Superintendent of the Sixth or Hamilton District.

The Grand Superintendent of the Seventh or Niagara District.

The Grand Superintendent of the Eighth or Toronto District.

The Grand Superintendent of the Ninth or Georgian District.

The Grand Superintendent of the Tenth or Ontario District.

The Grand Superintendent of the Eleventh or Prince Edward District.

The Grand Superintendent of the Twelfth or St. Lawrence District.

The Grand Superintendent of the Thirteenth or Ottawa District.

The Grand Superintendent of the Fourteenth or Algoma District.

The Grand Superintendent of the Fifteenth or Manitoba District.

The Grand Superintendent of the Sixteenth or British Columbia District.

The Grand Superintendent of the Seventeenth or Alberta District.

The Grand Superintendent of the Eighteenth or Kootenay District.

The Grand Scribe E.

The Grand Scribe N.

The Grand Principal Sojourner.

The Grand Treasurer.

The Grand Registrar, and

The Grand Janitor, who shall not, however, have a vote in Grand Chapter.

All Past Grand Officers, including Past Grand Superintendents of Districts, rank in the same order of precedence.

## CONSTITUTION.

## APPOINTED OFFICERS.

The Grand Senior Sojourner.  
 The Grand Junior Sojourner.  
 The Grand Lecturer.  
 The Grand Sword Bearer.  
 The Grand Masters of the Veils.  
 The Grand Standard Bearer.  
 The Grand Director of Ceremonies.  
 The Grand Organist.  
 The Grand Pursuivant.  
 Ten Grand Stewards.

## MEMBERS.

The three Principals of every Subordinate Chapter, and all Past First Principals, so long as they shall continue members of Subordinate Chapters.

5.—Present and Past Officers of Grand Chapter shall be known by the following titles: all First and Past First Grand Principals as “Most Excellent”; all other elected Grand and Past Grand Officers, and the Grand Superintendents of Districts, as “Right Excellent,” and all appointed and Past appointed Grand Officers as “Very Excellent.” The Grand Janitor shall be styled “Companion.”

## CONVOCATIONS.

6.—The Annual Convocation of this Grand Chapter shall be holden on the fourth Wednesday in January at such place as may be selected by Grand Chapter at the previous Annual Convocation and at such hour as the members of the Grand Council may from time to time determine.

7.—Emergent Convocations may be convened by the Grand First Principal, whenever in his judgment



it may be necessary, or upon the request of the First Principals of twelve Chapters, seven clear days' notice being given of such intention. The reason for convening a Grand Chapter of Emergency shall be expressed in the summons, and no business other than that stated shall be entered upon at that Convocation.

8.—The representatives of nine Chapters, together with at least one of the Grand Principals, shall constitute a quorum at all Convocations, and the Grand Chapter is declared open in Ample Form when the Grand First Principal is present, and at all other times in Due Form, but with the same authority.

#### OFFICERS—HOW CHOSEN.

9.—The elective officers of this Grand Chapter shall be chosen at each Annual Convocation by ballot, and by a majority of all the votes present, except the Grand Janitor, who shall be elected by an open vote of Grand Chapter.

The following officers, viz :—The Grand Z., H. and J., the Scribes, Principal Sojourner, Treasurer and Registrar shall be nominated for election. If more than one Companion be nominated, the election shall be decided by ballot, but where there is only one nomination the Companion so nominated shall be declared duly elected. If three or more Companions are nominated for any office and there is no election the Companion receiving the lowest number of votes shall retire. The Grand First Principal shall appoint three Companions as scrutineers of the ballot.

10.—None but Past First Principals shall be eligible for any office in this Grand Chapter, except the office of Grand Janitor, which may be filled by any Royal Arch Companion.

## WHEN INSTALLED.

11.—The appointed officers shall be selected by the Grand First Principal after his installation, and both elected and appointed officers shall be respectively installed and invested at the Annual Convocation, and shall hold their respective offices until the next Annual Convocation or until their successors shall have been regularly elected, appointed, installed or invested.

Should any officer elected or appointed be absent from the Annual Convocation, he shall, as soon as convenient thereafter, be installed or invested under the authority of the Grand Z., by the Grand Superintendent or other Grand or Past Grand Officer in his own or any other Chapter. No officer can be installed by proxy.

12.—Every Companion elected or appointed to office shall during his term of office be a subscribing, honorary or life member of some subordinate Chapter.

13.—The Grand Superintendents of Districts shall be elected by a majority of the representatives and Past First Principals of their respective Districts present at the Annual Convocation, subject to the confirmation of the Grand First Principal.

14.—The Grand Senior and Junior Sojourners, Lecturer, Sword Bearer, Masters of Veils, Standard Bearer, Director of Ceremonies, Organist, Pursuivant and ten Stewards, shall be appointed by the Grand First Principal.

## THE EXECUTIVE COMMITTEE.

15.—In order that the business of the Grand Chapter may be placed before it in proper and regular

form an Executive Committee shall be constituted. This committee shall consist of all past Grand First Principals, the Grand First, Second and Third Principals, the Grand Superintendents of Districts, the Grand Scribes, the Grand Treasurer and ten other members of Grand Chapter, five to be elected annually by ballot, and five to be appointed by the Grand First Principal immediately after the election and appointment of the Grand Officers. The Grand Second Principal shall be the presiding officer, and in his absence the Grand Third Principal or a chairman selected by the Committee shall preside. Seven members shall constitute a quorum for the despatch of business. The Executive Committee shall form sub-committees on Credentials, Warrants and Dispensations, Finance, the Condition of Capitular Masonry, Jurisprudence, Grievances and Appeals, Benevolence, Fraternal Dead, Foreign Correspondence, and on such other business as may be deemed necessary.

The Executive Committee shall meet at a time selected by the Grand Second Principal prior to the Annual Convocation and at other times if necessary.

#### VOTES AND VOTERS.

16.—Each officer and permanent member of this Grand Chapter (except the Grand Janitor) shall be entitled to one vote and each Chapter shall be entitled to three votes. All matters shall be decided by a majority of votes except when otherwise ordered. The votes are to be signified by a show of hands, which the Grand Scribes are to count if the voting is close. Five members may demand a ballot on any question either before or immediately after an open vote shall have been taken, which ballot shall be collected at once. In case of equality the presiding officer shall have the cast-

ing vote. No visitor shall on any account be permitted to vote.

17.—Should the representative officers the Z., H. or J., of a Chapter be unable to attend the Grand Convocation, such Chapter may by open vote select a Past First Principal as proxy, and such proxy, properly certified by the First Principal and the Scribe E. under the seal of the Chapter, shall entitle the Companion so selected to represent the Chapter at the Convocation of Grand Chapter. The credentials of a Companion acting as proxy for a Chapter must contain in writing the resolution of the Chapter, giving the proxy, signed by the First Principal and Scribe E. of the Chapter, on the authorized form. In the event of the representative officers and proxy of a Chapter being absent the Senior Past First Principal of the Chapter present shall be entitled to the vote of his Chapter. No Companion can represent more than three Chapters.

18.—Any Grand Officer who shall during the term for which he was chosen by either election or appointment remove from the jurisdiction or cease to be a member of some regular subordinate Chapter thereby vacates his office, and any Past Grand Officer or member who for six months consecutively ceases to be a member on the roll of a subordinate Chapter shall be disqualified from attending the Grand Chapter until he shall have again become, and continues to be, a member on the roll of some subordinate Chapter.

19.—No Grand Officer who has been duly elected by the Grand Chapter can be removed or suspended from his office by the Grand Z. except for cause; and his suspension or removal must be ratified by a majority of the members present at the next following Annual Convocation of this Grand

Chapter. The Grand Z. shall lay before such Grand Convocation a statement of the removal or suspension, together with his reasons therefor.

Any Grand Officer of this Grand Chapter may resign his office either before or after his installation or investiture ; whereupon the Grand Z. shall fill the vacancy by appointing another suitable Companion to such office until the next regular Convocation of Grand Chapter.

20.—When any Grand Lodge suspends or expels a brother who is a Royal Arch Mason for unmasonic conduct such action shall also suspend or expel him from his Royal Arch privileges, while the Craft discipline continues in force.

21.—Chapters neglecting to make their annual returns and payments to Grand Chapter cannot be represented in Grand Chapter until such returns and payments shall have been made.

22.—Should a vacancy occur in any office in Grand Chapter from any cause, the Grand First Principal shall fill such by appointment until next Annual Convocation of Grand Chapter.

23.—Companions who have rendered service to the Craft may, by unanimous vote by ballot of Grand Chapter, be constituted members of Grand Chapter with such rank as may be thought proper ; provided that notice be sent in writing to the Grand S. E. prior to the 31st October preceding, and the subordinate Chapters notified by that officer prior to the 30th November.

24.—No officer or member shall be permitted to be present at any Convocation of Grand Chapter without the proper clothing of a Royal Arch Mason.

25.—The officers of every Chapter, Grand and subordinate, in this jurisdiction, before they enter upon

the exercise of the functions of their respective offices, and every candidate upon his admission shall take an obligation to support and maintain the Constitution of the Grand Chapter of Royal Arch Masons of Canada.

POWERS OF THE GRAND FIRST PRINCIPAL.

26.—The Grand First Principal shall exercise all the executive and judicial functions of this Grand Chapter during its recess, and shall at each Annual Convocation communicate in writing a statement of his official acts during such recess, and recommend such measures as he may deem expedient.

27.—He shall have the power during the recess of Grand Chapter to grant a Dispensation under his hand and attested by the Grand Scribe E., under the seal of Grand Chapter, upon the petition of nine registered Royal Arch Masons in good standing, empowering them to hold Chapters of Royal Arch Masons and Lodges of Mark and Most Excellent Master Masons, for a certain specified time, provided such does not extend beyond the next ensuing Annual Convocation of Grand Chapter, when the Grand Chapter may confirm the said Dispensation and grant the petitioners a Warrant of constitution, but no Warrant or Dispensation shall be granted for constituting Lodges of Mark or Most Excellent Masters, independent of a Chapter of Royal Arch Masons.

28.—He shall also have the sole power to appoint representatives of this Grand Chapter, near other recognized Grand Chapters, and to receive and accredit representatives of other recognized Grand Chapters near this Grand Chapter, and to issue all dispensations; but for public festivals and processions authority may be granted by the Grand H. or J.

or the Grand Superintendent of the District. All Committees are appointed by the Grand First Principal unless otherwise ordered by Grand Chapter.

29.—He shall also have the power to decide all questions of usage and order of Masonic law, as applied to Capitular Masonry.

30.—He shall also have the power to convene any Chapter or Chapters of Royal Arch Masons within this jurisdiction at such time and place as he may designate, and in person or by proxy to preside thereat, inspect the proceedings and work of the same and require a strict compliance with the laws, rules and regulations of Capitular Masonry within the jurisdiction.

31.—He shall also have the power to suspend the Warrant or suspend the First Principal of a Chapter, until the next Annual Convocation of Grand Chapter.

32.—He shall also have the power to command every officer of the Grand Chapter and to call upon them for information, advice or assistance, or for anything else relating to the Royal Craft.

33.—He may summon any Chapter or officer of a Chapter to attend him, and may order the production of the Warrant, books, papers and accounts of such Chapter. If the summons be not complied with, nor a sufficient reason given, in his opinion, for non-compliance, such summons shall be repeated as a peremptory one, and if such summons be not attended to, the offending Chapter or member may be suspended pending report to Grand Chapter for further consideration.

34.—He shall not be applied to officially concerning any matter connected with Capitular Masonry, except through the Grand Scribe E. But this restriction does not apply to the Grand H. or J., who may communicate direct.

**35.**—He shall have the right to preside at all the Convocations of Grand Chapter. In case of his absence or disability the Grand Second Principal, or in his absence the Grand Third Principal, or in the absence of all these the Senior Past Grand First Principal present shall fill the chair.

**36.**—In case of the absence, inability or death of the Grand First Principal, the immediate Past Grand First Principal shall act until the next election takes place, and, failing him, any Past Grand First Principal in order of seniority. If none be found to act, the Grand Chapters shall forthwith be summoned by the Grand Second Principal, or, in his absence, by the Grand Third Principal, to elect a new Grand First Principal.

#### THE GRAND SECOND PRINCIPAL.

**37.**—It shall be the duty of the Grand Second Principal to preside at all meetings of the Executive Committee, and to convene it at such times and hour as he may order. He shall also exercise such executive or judicial functions as may be delegated to him by the Grand First Principal.

**38.**—He shall report in writing to the Grand First Principal any and all official acts performed by him during the recess of Grand Chapter.

#### THE GRAND THIRD PRINCIPAL.

**39.**—It shall be the duty of the Grand Third Principal to act as Vice-President at the meetings of the Executive Committee, and in the absence of the Grand Second Principal to preside at the same, and to exercise such other and executive judicial functions as may be delegated to him by the Grand First Principal. He



shall report in writing to the Grand First Principal any and all official acts performed by him during the recess of Grand Chapter.

THE GRAND SUPERINTENDENTS OF DISTRICTS.

**40.**—This officer must be a Past First Principal and a resident in the district for which he is appointed.

**41.**—He may preside and rule in every Chapter he visits within his district, and may hear and determine any subject of Masonic complaint, or irregularity respecting Chapters, or individual Companions within his district, and may proceed to admonition or to suspension. A minute of all such proceedings, stating the offence and the law applicable to it, together with his decision is to be transmitted to the Grand First Principal through the Grand Scribe E., and when the case is of so flagrant a nature as in the judgment of the Grand Superintendent of the district to require the erasure of a Chapter, or the expulsion of a Companion, he shall make a special report to the Grand Chapter, with his opinion thereon. His decision is final unless an appeal is made therefrom to the Grand First Principal or Grand Chapter.

**42.**—He may summon any Chapter or Companion within the District to attend him, and may order the production of the Warrant, books, papers and accounts of such Chapter. If the summons be not complied with, nor a sufficient reason given for non-compliance, a peremptory summons shall be issued, and, in case of contumacy, he may suspend the offending Chapter or Companion, and shall report the case as provided.

**43.**—All petitions for Dispensations or Warrants for new Chapters must be recommended and duly signed by the Grand Superintendent of the district prior to their transmission to the Grand Scribe E., whose duty

it shall be to see that such recommendation and signature are duly attached to each petition and recommended by the nearest Chapter ; if such recommendation be unreasonably withheld, it shall be left to the decision of the Grand First Principal.

**44.**—For the information of the Grand Chapter he shall transmit to the Grand Scribe E. not later than the first day of January prior to each Annual Convocation of Grand Chapter, a report in writing on the condition of Royal Arch Masonry in his district, with a list of such Chapters as may have been constituted since the last Annual Convocation and a list of all Chapters visited.

**45.**—He shall have power to give or refuse consent for the removal of a Chapter from place to place within his district, but not from his district into another, nor from another district to his own, without the sanction of the Grand First Principal. Provided that such removal shall not be made into any village, town or city where a Chapter or Chapters exist, without the permission of the said Chapter or a majority of the Chapters.

**46.**—He shall have power to grant dispensations for public festivals or processions in his district.

#### THE GRAND TREASURER.

**47.**—It shall be the duty of the Grand Treasurer to take charge of the moneys, securities and vouchers of Grand Chapter, to pay all orders duly drawn under the direction of Grand Chapter ; and bearing the signature of the Grand Second Principal, attested by the Grand Scribe E.; to make an itemized report annually in writing to Grand Chapter, and to the Grand First Principal, whenever required, of the amount and nature of the receipts and disbursements of the moneys of the Grand

Chapter, together with the names of all banks or financial companies where the funds or securities are deposited, with a separate list of same, showing amount, rate of interest and term of security, and to verify his statement by a voucher from each of the banks or companies holding the said moneys or securities ; to pay and deliver to his successor in office all moneys, books, writings and property of Grand Chapter under his control, and within thirty days after his installation to furnish a bond of one thousand dollars (the fee for such bond shall be paid by Grand Chapter) for the faithful performance of his duties.

## THE GRAND SCRIBE E.

48.—It shall be the duty of the Grand Scribe E. to record all the laws, acts and transactions of Grand Chapter; to receive, file and safely keep all papers, books and documents of Grand Chapter, other than those belonging to the Grand Treasurer ; to receive and keep a proper account of all moneys of the Grand Chapter, and to pay over the same within ten days of the receipt to the Grand Treasurer ; to give an itemized report annually to Grand Chapter of the amount of money received by him and the sources from which it was received ; also a list of the Chapters that have failed to make returns of their elections of officers or pay the fees required by Grand Chapter, and also such other information as to the state of subordinate Chapters as may come to his knowledge and be of interest to Grand Chapter, to conduct the correspondence of Grand Chapter, under the direction of the Grand First Principal, and to deliver to his successor in office all moneys, books, writings and property of the Grand Chapter under his control. He shall also have charge of and be responsible for the regalia, jewels and furniture belonging to Grand

**Chapter.** He shall, immediately after his installation, furnish an indemnity bond in the sum of one thousand dollars. The fee for such bond shall be paid by Grand Chapter.

THE GRAND SCRIBE N.

**49.**—It shall be the duty of the Grand Scribe N., to assist the Grand Scribe E. in the discharge of his duties, when called upon, at Convocations of Grand Chapter.

THE GRAND PRINCIPAL SOJOURNER.

**50.**—It shall be the duty of the Grand Principal Sojourner to see that the Grand Senior and Junior Sojourners perform their duties, and to report the names of all visitors who seek admission to Grand Chapter.

THE GRAND SENIOR SOJOURNER.

**51.**—It shall be the duty of the Grand Senior Sojourner to allow none to enter Grand Chapter but those who come properly clothed as Royal Arch Masons and duly qualified.

THE GRAND JUNIOR SOJOURNER.

**52.**—It shall be the duty of the Grand Junior Sojourner to see that the portals of Grand Chapter are properly guarded, and to report all visitors and communications from without to the Grand Principal Sojourner.

THE GRAND LECTURER.

**53.**—The Grand Lecturer shall have communicated to him by the Grand First Principal the authorized work of Grand Chapter. It shall be his duty when requested by any subordinate Chapter, to visit the same, exemplify

the work authorized by this Grand Chapter, and to report to the Grand First Principal or Grand Chapter all who wilfully depart therefrom. Such Chapter shall pay for such services a sum not less than two dollars per day and actual travelling and hotel expenses. In no case shall any expense be entailed upon Grand Chapter for such service.

## THE GRAND JANITOR.

54.—It shall be the duty of the Grand Janitor to guard the entrance to Grand Chapter, to see that all visitors are duly vouched for before being reported, and that decorum is preserved at the entrance to Grand Chapter.

## THE EXECUTIVE COMMITTEE.

55.—The Executive Committee shall audit the accounts of Grand Chapter, examine and report on all applications for Warrants, and report on the condition of Capitular Masonry, prepare a report upon Foreign Correspondence, consider all matters referred to by the Grand First Principal or Grand Chapter and appoint a Committee on Credentials. It shall further deal with all subjects that are brought before it in connection with the work and business of the Grand Chapter. All transactions of the committee shall be entered in a minute book by the Grand Scribe E. and a report on the several subjects shall be presented to Grand Chapter.

56.—It shall be the duty of all Grand Officers to perform such other duties appertaining to their respective offices, in conformity with this constitution, as shall from time to time be required by the Grand Chapter or the Grand First Principal.

## FEES, DUES AND COMPENSATION.

57.—The Grand Chapter shall from time to time fix the amount to be paid into the treasury thereof, for the organization of, and as dues from, subordinate Chapters.

58.—The fees for conferring the several degrees of Mark Master, Most Excellent Master and Royal Arch by the Chapters in this jurisdiction shall be not less than ten dollars. This is not, however, to extend to serving Companions, who may be exalted free of initiation fee, provided that a dispensation be first obtained from the Grand First Principal.

59.—The following shall be the fees and dues payable to the Grand Chapter, and which must in every case be sent to the Grand Scribe E., with the application or return to which they respectively relate, and for which every First Principal of a Chapter is responsible :—

For a Dispensation for a new Chapter, . . . . .	\$25 00
For a Warrant of confirmation of ditto . . . . .	10 00
For a Warrant of constitution for a new Chapter	35 00
For a new Warrant, to replace loss by fire or otherwise, properly certified . . . . .	10 00
For every other dispensation . . . . .	1 00
For registry of the name of every candidate for exaltation, and a Grand Chapter certificate . . .	2 00

(This is to be paid on the registration of every Mark Master Mason.)

For a Grand Chapter certificate to replace one lost . . . . .	1 00
For registry of a Companion joining a Chapter whose name has been previously registered . . .	0 50

For registry of a Companion joining from another jurisdiction.....	1 00
For every member of a Chapter, payable annually to the 31st of Dec. in each year, except the first year of the organization of the Chapter..	0 25
For Constitutions, each.....	0 20
For Ceremonies, each.....	0 20

60.—The Grand First Principal shall receive his actual expenses when travelling on the business of this Grand Chapter and such further sum as Grand Chapter from time to time may determine. The Grand Scribe E. shall also receive such salary as Grand Chapter shall direct, and the Grand Janitor five dollars, unless otherwise ordered by Grand Chapter.

61.—That the dues of a Chapter which has suffered loss by fire shall not be remitted unless the furniture and jewels of the said Chapter shall have been insured at the time of such loss.

APPEALS.

62.—Any Chapter or Companion feeling aggrieved by the decision of any other authority may appeal to the Grand Chapter against any such decision. Notice of the intention to appeal must be given to the Grand Scribe E. within fourteen days from the time the decision is made known, and the particulars of the grievance complained of must be in writing and be transmitted to the Grand Scribe E. within one month after the date of the decision appealed against.

63.—An appeal shall in all cases lie to the Grand Chapter from the decision of the Grand First Principal, but his opinion and decision shall stand as the judgment of the Grand Chapter unless it shall be otherwise deter-

mined by the vote of a majority of the members present at the Annual Convocation of Grand Chapter.

64.—The rules respecting Masonic trials and appeals authorized by the Grand Lodge of Canada shall, where applicable, govern the conduct of trials in the Chapter.

#### GOVERNMENT OF SUBORDINATE CHAPTERS.

65.—All legally constituted assemblies of Royal Arch Masons are called Chapters, as regular bodies of Mark Masters and Most Excellent Masters are called Lodges.

66.—A Royal Arch Chapter shall consist of a First, Second and Third Principal, Treasurer, a Scribe E., a Scribe N, three Sojourners, a Master of the First, Second, Third and Fourth Veils, and a Janitor, and as many other officers as may be approved of by by-law for the government of the Chapter. The Principal of the Chapter for the time being shall be the Master and Wardens respectively of Lodges of Mark and Most Excellent Masters, and the other officers according to seniority.

67.—Chapters shall be duly constituted, and the officers installed by one of the Grand Principals or Superintendent of a District, or by some present or past First Principal.

68.—Every Chapter of Royal Arch Masons throughout the jurisdiction shall have a Warrant of constitution from the Grand Chapter, or a Dispensation permitting it to work, pending the issue of a Warrant, and no Chapter shall be deemed legal without such Warrant or Dispensation. The Chapter shall also have a seal with the name and number engraved thereon, an impression of which shall be deposited with the Grand Scribe E.



69.—The mode of application for a Warrant must be by petition, which is to be transmitted to the Superintendent of the District in which it is intended to hold the Chapter, for his recommendation or opinion. This petition must be signed by nine registered Royal Arch Masons, specifying the place where it is intended to hold such Chapter, the day on which it is proposed to be holden, with the names of the Companions selected to fill the offices of First, Second and Third Principals, and such Warrant or Dispensation shall also give power to open and hold lodges of Mark and Most Excellent Masters.

70.—Every Chapter has the power to make or amend such by-laws as to it may seem meet for its own private government, provided they be not incompatible with the general laws of the Craft, or the statutes enacted by the Grand Chapter, and such by-laws must be submitted to the Grand Superintendent of the District, who shall forward them with his remarks thereon to the Grand Scribe E. for approval of the Grand Z., which when approved shall become law and shall be fairly copied in a book, and every Companion shall sign them, as a token of submission thereto when he becomes a member, and when any alterations shall be made in the by-laws of any Chapter, such alterations shall in like manner be submitted and approved before they become law. The regular day and hour of meeting of the Chapter shall be specified in the by-laws.

71.—That the practice of transferring dormant Warrants from one place in the jurisdiction to another be prohibited, and that all Warrants when surrendered, either as dormant or suspended Warrants, be held in the custody of the Grand Scribe E., and that the naming of a Chapter after a living person be also prohibited

72.—All Chapters shall hold their regular Convocation at least once in every three months. Lodges of Mark Masters and Most Excellent Masters may be opened and worked without the Chapter being first opened.

73.—A Chapter of emergency may at any time be called by summons, giving seven days' notice, by authority of the First Principal, or upon the request in writing of nine members of the Chapter. The business to be transacted shall be expressed in the summons, and none other than that specified shall be entered upon at that Convocation.

74.—Every Chapter shall annually elect by ballot the First, Second and Third Principals, the Treasurer, the Scribes E. and N., the Principal Sojourner, and by open vote two Auditors and the Janitor. At the next regular Convocation following such election after the minutes shall have been read and approved, they shall be duly installed or invested, after which the First Principal shall appoint all other officers required for the better working of the Chapter.

75.—No Chapter shall be opened unless there be present nine Royal Arch Masons, seven of whom shall be members of the Chapter. If, in the absence of a Principal, no Past Principal of equal or higher rank be present, the First Principal or Acting First Principal may declare the Chapter open for the transaction of business, but not for conferring the Royal Arch Degree. While assembled the Companions must wear the proper clothing of Royal Arch Masons.

76.—Chapters working under a Dispensation shall not transact any business except that clearly expressed in the Dispensation creating them, and shall always be governed by the Constitution and regulations of the Grand Chapter.

77.—A Chapter of Royal Arch Masons or a Lodge of Mark or Most Excellent Masters must, when convened, be regularly opened and closed, and cannot be called off from one meeting to another.

78.—No Companion shall be eligible for the First Principal's Chair until he has served in the Second Principal's Chair for twelve months, nor to the Second Principal's Chair until he has served in the Third Principal's Chair for twelve months, unless by dispensation from the Grand First Principal. No Principal shall be installed in a Warranted Chapter until he has been examined by a Board of two or more Past First Principals, and until such Board shall certify in writing to the installing Past First Principal that these Companions are fully familiar with their respective duties.

79.—The precedence of a Chapter is derived from the number of its Warrant as recorded. If the majority of members withdraw from a Chapter the power of assembly exists with those remaining, provided their number be not less than nine, but if less than nine remain the Chapter becomes extinct and its Warrant, records and property revert to Grand Chapter.

80.—A Chapter failing to convene for one year, or a Chapter failing to make returns, showing the names of all Companions exalted and those who have joined, to Grand Chapter for two years, shall forfeit its Warrant, but not until after the Principals thereof shall have been duly summoned to show cause to the contrary.

81.—When a Chapter Warrant has been surrendered, it may, at discretion only, be restored by Grand Chapter, provided a petition be regularly presented and signed by not less than nine former members of such Chapter and from none others, and if the Warrant be re-

stored the petitioners only shall constitute the membership of such Charter.

**82.**—Each subordinate Chapter has the power to discipline its own members and all Royal Arch Masons residing in its jurisdiction, as well as those who have taken any of the Capitular degrees, and may, after due notice of the charge preferred and after due trial, censure, or suspend, and may recommend to Grand Chapter for expulsion. But no brother or Companion shall be disciplined without a two-thirds vote of all the members present at the time of taking such vote. The name of the Companion when disciplined and at the time of restoration, if any, shall be sent to the Grand Scribe E. and also the Grand Superintendent of the District. If any appeal be taken to Grand Chapter the Scribe E. shall transmit to the Grand Scribe E. a true copy of all proceedings in the case.

**83.**—The majority of the members of a Chapter, when congregated, have the privilege of giving instructions to their Principals or other representative before the Convocation of Grand Chapter.

**84.**—A resolution once disposed of by a Chapter cannot be reconsidered or rescinded without notice thereof being given at a preceding Convocation and included in the summons to the members.

**85.**—Any officer of a Chapter may resign his office with the consent of the Chapter, and upon his resignation being accepted, if the office is an elective one the Chapter shall fill the vacancy by an election at the next regular Convocation, notice thereof being sent to the members, and if the office is an appointed one, then the First Principal shall fill the vacancy by appointment at once, provided that no Companion shall be en-

titled to past rank in any office unless he has served a full term of twelve months in such office.

#### THE FIRST PRINCIPAL.

86.—The First Principal is responsible for the due observance of the laws relating to subordinate Chapters, and that all returns are made and fees and dues paid to Grand Chapter. He shall see that there is kept by the Scribe E. a proper minute book and a register, in which are recorded the names of all candidates, their ages, residences and professions, with dates of proposal, balloting and taking the several degrees ; also a book to be kept by the Treasurer in which are recorded the receipts and disbursements of all moneys and accounts between the Chapter and individual members, and the Chapter and Grand Chapter and other books necessary for the welfare of the Chapter. He shall sign all warrants, cheques or orders for the payment of moneys. In the absence of the Past First Principal, the chair shall be assumed by his immediate predecessor, and in his absence by the next immediate Past First Principal.

#### THE SECOND PRINCIPAL.

87.—The Second Principal of the Chapter for the time being shall be the Senior Warden of the Lodge of Mark or Most Excellent Masters, and may confer the subordinate degrees, the First Principal or Past First Principal administering the OB. He shall act as Chairman of the Executive Committee of the Chapter, and fulfil any other duties required of him by the First Principal.

#### THE THIRD PRINCIPAL.

88.—The Third Principal of the Chapter for the time being shall be the Junior Warden of the Lodge of

Mark and Most Excellent Masters, and may confer the subordinate degrees, the First Principal or Past First Principal administering the OB. He shall act as Chairman of the Executive Committee of the Chapter in the absence of the Second Principal, shall have the care of the regalia and jewels of the Chapter, and fulfil any other duties required of him by the First Principal.

#### THE TREASURER.

89.—The Treasurer shall have charge of the funds, securities, vouchers and financial concerns of the Chapter. He shall keep books as specified, receive all moneys and pay out the same only by the authority of the Chapter certified by the First Principal, countersigned by the Scribe E., and shall deposit all moneys in a chartered bank when possible in the name of the Chapter.

#### THE SCRIBE E.

90.—The Scribe E. shall keep a record of all the transactions of the Chapter, send a copy of every summons issued for all convocations to the Grand Superintendent of the District, make all returns required by Grand Chapter, collect and pay over on receipt all moneys that may be paid him on account of the Chapter within thirty days of the receipt thereof. He shall also keep an itemized account of the receipts of the Chapter, and all accounts between each member and the Chapter.

#### OTHER OFFICERS.

91.—The power and duties of other officers shall conform to customary usage, as prescribed by the ceremony of installation, the Constitution of Grand Chapter, and the by-laws of the subordinate Chapter.

## MEMBERSHIP.

92.—Every candidate for Chapter degrees shall be an affiliated Master Mason, and no brother shall be exalted to the Royal Arch degree unless he shall have received the degrees of Mark Master and Most Excellent Master, and has been a Master Mason for three months, except the period be shortened by dispensation of the Grand First Principal, which shall not, however, be for less than four weeks, nor until he has presented a petition, giving his name, age, residence and profession, his mother lodge, or the lodge of which he is a member, and is recommended by two Companions, being members of the Chapter. He must be regularly proposed at one Convocation of the Chapter, and a committee of the members appointed to enquire into his character. Notification of his proposal shall then be sent to all members of the Chapter, in the summons for the next Convocation, whether regular or emergent. When this has been done, if the report of the committee be favorable, he may be balloted for, and, if approved, admitted. If the report be unfavorable, he shall be deemed a rejected candidate, and cannot be proposed or balloted for in that or any other Chapter within twelve months of the time of his rejection. All balloting must take place in the Royal Arch Degree.

93.—No Companion shall be admitted a joining member unless he be affiliated with a Craft lodge of this or other recognized jurisdiction, and gives proof of his good standing, or without being regularly proposed and seconded by two members of the Chapter, and his name, age, residence and the Chapter of which he is at the time, or was a member, shall have been sent to all members of the Chapter, when, if the report be

favorable, he may be balloted for at the next convocation.

94.—No Chapter shall admit a candidate who resides within the jurisdiction of another Chapter without the written consent, given by open vote, after one month's notice to all the members of such other Chapter, and signed by the First Principal and Scribe E. of the Chapter.

95.—The jurisdiction of every Chapter, except in cities and towns where there is more than one Chapter, extends half way to the nearest Chapter. In such cities and towns, Chapters have concurrent jurisdiction, and consent for the formation of a new Chapter in their vicinity must be given by a majority of such Chapters.

96.—When any Companion from without the jurisdiction of the Grand Chapter of Canada presents himself as a Royal Arch Mason, and produces satisfactory proof of his having being exalted to that degree, each and every Chapter shall have liberty to and may confer the degree of Mark Master, and Most Excellent Master on such Companions who have not heretofore received them, free of charge, except a fee to Grand Chapter for Registry and certificate.

97.—Every Chapter shall, within one month after each exaltation, send a return to the Grand Scribe E., specifying the date of exaltation, with the dates when the Companion received the degrees of Mark Master and Most Excellent Master, and shall apply for the registration of his name on the books of the Grand Chapter, and for a certificate under seal signed by the Grand Scribe E., such registry and exaltation to be paid for by the Chapter, fees for registry and certificate, in every instance, to accompany the application. On the delivery of this certificate each Companion must affix his signature on the margin, without which it will not be valid.



98.—No Companion shall be admitted as a visitor to any Chapter unless he is personally vouched for, or unless after strict examination by two skilled Companions he is found worthy, and shall have duly registered his name in the visitors' book. This shall not exclude a Mark Master or Most Excellent Master from the right to visit a lodge while working any degree to which they may have attained. All visitors are subject to the by-laws of the Chapter.

99.—No unaffiliated Regular Mason has a right to visit any Chapter in the place where he resides more than once during the period of his non-affiliation.

100.—A Companion residing within this Grand Jurisdiction is not required to affiliate with the Chapter nearest his place of residence, but may be admitted a member of any Chapter that will receive him.

#### LIFE MEMBERSHIP.

101.—Subordinate Chapters may, by by-law, admit their members to life membership or such terms as the Chapter may determine by by-law, and for each such life member such Chapter may pay into Grand Chapter the sum of (\$2) two dollars, which payment shall exempt the Chapter from the payment of further dues to Grand Chapter on his behalf.

102.—Upon such life member withdrawing from the Chapter of which he originally became a life member and joining any other Chapter, such other Chapter shall not be obliged to pay any annual dues to Grand Chapter on his account, nor, in case he become a life member of such other Chapter, shall it be obliged to pay a second fee therefor to Grand Chapter.

103.—Life members shall be entitled to all the privileges of, and shall be amenable to discipline in the Chapter, in the same manner as ordinary members.

## HONORARY MEMBERS.

104.—Chapters may elect any Companion who has rendered service to the Royal Craft an honorary member by a three-fourths vote of the members present by ballot, but such honorary membership does not confer the right of voting except so declared and conferred by unanimous ballot at the time of such election. Notice of proposal for honorary membership must be given at one Convocation and the name inserted in the summons for the next Convocation. Honorary members are to be included in the annual return to Grand Chapter, and similar dues as for ordinary members must be paid on their behalf by the Chapter, or the fee may be commuted as in the case of a life member.

105.—Whenever a member of a Chapter desires by either personal application or in writing to withdraw from a Chapter, he shall be furnished, on payment of all dues owing, with a demit in form as authorized by Grand Chapter. This certificate shall be produced at any other Chapter with which the member desires to affiliate, previous to the ballot being taken.

106.—If a demitted Companion desires to renew his connection with a Chapter he can only do so by petition and ballot as in other cases. Should any petitioner for affiliation be rejected he may renew his application to the same or to any other Chapter in the jurisdiction at any time.

107.—Every member of a subordinate Chapter neglecting to pay his dues for one year shall, after due notice has been sent to his last known address, and trial, be liable to punishment by suspension. If the Companion does not appear or a sufficient reason in the opinion of the First Principal be not given for his absence,

he shall then and there be declared suspended by the First Principal.

**108.**—When a member is suspended for non-payment of dues he shall on payment of arrears owing at the date of his suspension be restored to good standing without ballot.

**109.**—By a vote of the Chapter the dues of any member may be remitted provided that notice of such motion has been given at a preceding Convocation, and the members notified upon the summons with the amount proposed to be remitted. This shall also apply to members who have been suspended for non-payment of dues, and such motion, if adopted, shall restore those members to good standing without ballot.

**110.**—All applications for Grand Chapter certificates must be made through the Grand Scribe E., by the Scribe E. of the subordinate Chapter concerned, and no Chapter shall grant any certificate of any kind except that of demit or withdrawal from membership, which shall be furnished without charge.

**111.**—That the Scribe E. of every Chapter shall report by first mail to the Grand Scribe E. the death of any Grand Officer, Past Grand Officer or other prominent Royal Arch Mason, a member of his Chapter or residing within the jurisdiction of his Chapter, and on the receipt of such information the Grand Scribe E. shall notify the Grand First Principal, so that if advisable, the Grand Chapter may be represented at the funeral.

#### BALLOTING.

**112.**—All balloting for candidates for admission or affiliation shall take place in the Royal Arch degree.

**113.**—None but Companions, members of the Chapter in good standing, can vote for the admission of can-

didates or affiliation of Companions, and if the Chapter so decides by by-law no Companion who is over twelve months in arrears for dues shall be entitled to vote at the annual election of officers.

**114.**—There shall be but one ballot for the several degrees conferred under the Chapter Warrant, and no Companion shall violate the secrecy of the ballot, under penalty of censure in open Chapter for the first offence, and for a second offence deprivation of all his Royal Arch privileges.

**115.**—A proposition for membership may be withdrawn by the consent of the Chapter before the committee has reported upon it, but after a ballot has been ordered, it cannot be postponed, neither can it be reconsidered, and a ballot must be taken on every petition after it shall have been referred to a committee and reported upon favorably, provided the Chapter has jurisdiction and the applicant is eligible.

**116.**—No candidate shall be admitted or Companion received as an affiliated member if on the ballot being taken two black balls appear against him.

**117.**—Should objection be made to the advancement of a candidate after he shall have received one of the subordinate degrees, it shall be the duty of the First Principal to order the Companion so objecting to file written charges forthwith, and the Chapter as soon as convenient shall proceed to investigate the said charges, and if the same shall not be proven, the degree shall be conferred upon the candidate as if no charges had been made; but should the charges be proven, then the candidate shall be considered rejected, and shall not apply again under three months from the time of rejection, nor then to any other than the Chapter rejecting him, without the unanimous consent of said Chapter; provided, however,

that in case the Companion making the objection shall neglect or refuse to file charges and specification within thirty days, then the Chapter may proceed to confer the degrees, the same as if no objection had been made.

#### PUBLIC PROCESSIONS.

**118.**—No public procession or festival where Royal Arch clothing is proposed to be worn shall be allowed without a dispensation from the Grand First Principal, except to attend Masonic funerals, the urgency of which may not admit of the delay necessary to procure the dispensation.

**119.**—If any Chapter or Companion shall take part in any public procession, except a funeral, in Royal Arch clothing without a dispensation, such Chapter or Companion shall be suspended by the Grand First Principal until the latter or Grand Chapter shall determine the matter.

#### CHAPTER BOOKS.

**120.**—In each Chapter shall be kept a book or books in authorized form, in which shall be registered the names of all Companions who shall be installed as First, Second and Third Principals, together with the names of all other officers of the Chapter. In these books shall also be kept a list of the members, giving the name, age, mother lodge, present lodge, date of receiving Mark Master and Most Excellent Master and Royal Arch degrees, or date of affiliation, and also dates of demission, suspension, expulsion or death.

**121.**—In each Chapter shall be kept a minute book in which must be entered the proceedings of each Convocation in the form prescribed by Grand Chapter, and which on no account must be deviated from. The min-

utes must include the names of all visitors who are present at the Convocations.

**122.**—A members' and visitors' register, which shall contain the signatures of every member or visitor entering the Chapter must be placed at a convenient situation near the entrance. In the case of visitors the name of each visitor, his Chapter, its number, location and jurisdiction must be stated. The Janitor shall see that all these entries are properly made.

**123.**—A Scribe E's book in which shall be shown an itemized account of the receipts and disbursements of the Chapter, and also an account between each member and the Chapter.

**124.**—A Treasurer's cash book in which shall be shown an itemized account of the receipts and disbursements of the Chapter.

**125.**—A book of Marks in which shall be kept a copy of the Marks selected by Companions, provided, however, that all such Marks must be in proper form and composed of lines or combination of lines in the form of squares, angles, triangles, or any other form in which straight lines can be combined. The use of crests, coats of arms, as Marks, being unmasonic, is prohibited.

**126.**—Each Chapter shall keep a book, in which shall be copied the by-laws made for the government of the Chapter, with the signature thereto of each Companion who is a member.

#### R. A. REGALIA.

**127.**—The Royal Arch apron to be worn by the Companions is to be of white lambskin or white kidskin, from fourteen to sixteen inches wide, and from twelve to fourteen inches deep, with an indented crimson and

purple border two inches wide, the crimson part pointing to the centre of the apron, the border of the flap or lappet to be only one inch wide ; in the centre of the flap is to be a triangle of white silk or satin surrounded with gold border, and within the triangle three taus united to gold spangled embroidery, and two gold tassels are to be suspended by white ribbons two inches wide, coming from under the flap. The linings and strings shall be white.

**128.**—The apron for Principals and Past First Principals of subordinate Chapters shall have the triangle, the linings and strings, and the ribbons suspending the tassels of scarlet, and may be trimmed with gold lace and fringe.

**129** —The apron for present and past officers of the Grand Chapter shall have an indented crimson and purple border four inches wide, the border of the flap or lappet to be two inches wide, the triangle, linings and strings, and ribbons suspending the tassels to be purple ; there may be also the emblem of office embroidered on the centre of the apron.

**130.**—The sash of the Order shall be of four-inch indented crimson and purple ribbon, with silk fringe at the ends, and is to be worn on the left shoulder. The sash of Principals and Past First Principals of subordinate Chapters may have gold fringe or bullion.

**131.**—The sash of present and past Grand Officers of the Grand Chapter shall be a tricolour ribbon of purple, crimson and pale blue, four inches wide with gold fringe or bullion at the ends.

**132.**—The jewel of office worn by the present and past officers of the Grand Chapter may be suspended by a collar of three colours, viz. : purple, crimson and pale blue, four inches wide.

**133.**—The jewel of office worn by the Principals and officers of subordinate Chapters is to be suspended by a crimson collar, four inches wide.

**134.**—The aprons, collars and jewels of officers of lodges of Mark Masters and Most Excellent Masters, which are not independent bodies, may be those of the Chapter, according to rank, and Companions may wear their Royal Arch clothing therein.

**135.**—The jewel of the Order is to be worn on the left breast, suspended by a narrow white ribbon ; but for present and past officers of the Grand Chapter, it may be tricolor, corresponding with the collar ; and for Principals and Past First Principals of subordinate Chapters, crimson, also corresponding with the collar ; all jewels to be of gold or gilt.

**136.**—The jewel of a Mark Master is to be in the form of a keystone. On the front the owner's Mark is to be engraved within a circle with the letters round it, H.T.W.S.S.T.K.S. On the reverse side may be the owner's name and that of his Chapter, with the date of his advancement. The jewel should be a white cornelian stone, but may be of gold or silver or mother-of-pearl, and suspended by a narrow light blue ribbon with crimson edges.

**137.**—No honorary or other jewel or emblem shall be worn which shall not appertain to, or be consistent with, those degrees which are recognized and acknowledged by the Grand Chapter.

#### JEWELS.

**138.**—The following are the jewels of the officers :—  
First Grand Principal Z.

A crown irradiated between the legs of a pair of compasses, the points resting on a triple triangle.



Second Grand Principal H.

The All-Seeing Eye irradiated between the legs of a pair of compasses, the points resting on a triple triangle.

Third Grand Principal J.

The Volume of the Sacred Law irradiated between the legs of a pair of compasses, the points resting on a triple triangle.

Past Grand Principals.

The jewel appertaining to their respective offices in a circle.

Grand Superintendents of Districts.

A small triangle irradiated in a double triangle enclosed within a circle on a triangle.

Past Grand Superintendents of Districts.

The same jewel, omitting the small triangle, irradiated.

Grand Scribes E. and N.

Cross pens with a tie within a triangle.

Principal Sojourners of Grand and Subordinate Chapters.

A square irradiated within a triangle.

Grand Treasurer.

The key within a triangle.

Grand Registrar.

A scroll on a pen, within a triangle.

Assistant Sojourners of Grand and Subordinate Chapters.

A square within a triangle, not irradiated.

Grand Lecturer.

A Closed Book

Grand Sword Bearer.

Cross swords, with a tie, within a triangle.

Grand Masters of Veils.

Cross batons, with a tie, within a triangle.

Grand Standard Bearer.

A standard with a triple tau in the centre, within a triangle.

Grand Director of Ceremonies.

Cross wands with a wreath, within a triangle.

Grand Organist.

A harp within a triangle.

Grand Pursuivant.

Cross swords and wand, with a coat of arms, within a triangle.

Grand Stewards.

A triangle.

Grand Janitor.

A sword.

Past Grand Officers.

The jewel appertaining to their respective offices set in a circle, except Past Grand Superintendents.

#### SUBORDINATE CHAPTERS.

139.—First Principal Z.

A crown irradiated, within a triangle.

Second Principal H.

An All-Seeing Eye, irradiated within a triangle.

Third Principal J.

The Volume of the Sacred Law, irradiated within a triangle.

**Past First Principals.**

The same as First Principal Z., but within a circle.

**Officers of Subordinate Chapters.**

The emblems appertaining to their office as in Grand Chapter, within a triangle.

**ROBES.****140.—First Principal Z.**

A Scarlet robe trimmed with ermine

**Second Principal H.**

A Purple robe.

**Third Principal J.**

A Blue robe.

**Scribes E. and N. and Sojourners.**

White robes.

**AMENDMENTS.**

**141.**—Amendments to the Constitution may be proposed in writing at any regular Annual Convocation of the Grand Chapter, or may be transmitted in writing to the Grand Scribe E. prior to the 31st October of each year, and a copy of the proposed amendment sent to each Chapter prior to the 30th November in each year, after which they shall lie over in consideration until the next Annual Convocation. If then adopted by a two-thirds vote of Grand Chapter they thereby become part of this Constitution.

**142.**—All Constitutions, or parts of Constitutions, edicts or resolutions, by-laws and rules of order heretofore adopted by the Grand Chapter, inconsistent with this Constitution, are hereby repealed.

## RULES OF ORDER.

**143.**—(1) The following are the regulations for the government of Grand Chapter during the time of business, and the business shall be disposed of in the following order :

(2) Officers and members must be properly clothed in accordance with their rank, and on the call to order, the Grand Chapter shall be opened in proper form.

(3) The minutes of the last Annual Convocation and emergent Convocations shall be read and confirmed.

(4) The Grand First Principal shall deliver his annual address.

(5) The Grand Second and Third Principals shall make any communication they may deem necessary.

(6) The Grand Scribe E. and the Grand Treasurer shall make their annual reports.

(7) The Grand Superintendents of the Districts shall make their annual reports.

(8) The reports of the Executive, Committee on Credentials, Finance, Foreign Correspondence, Condition of Capitular Masonry, Benevolence, Grievances and Appeals, Jurisprudence, and on the Fraternal Dead, and reports of any special committee appointed shall be read.

(9) When the presiding officer shall call Grand Chapter to order, there shall be general silence.

(10) All Companions shall keep their seats, except the Grand Scribes, the Grand Principal Sojourner, and his Assistants, the Grand Director of Ceremonies, the Grand Stewards, who are allowed to move from place to place in discharge of their duties.

(11) No Companion shall be permitted to sit in Grand Chapter as a visitor without unanimous consent.

(12) All resolutions shall be in writing.

(13) No Companion shall speak twice to the same question, unless in explanation, or the mover in reply, and no visitor shall speak to any question, unless requested or permitted to do so by the presiding officer.

(14) When a Companion speaks he shall rise and remain standing, addressing himself to the Grand First Principal, and shall not be interrupted except on a point of order.

(15) If any Companion shall have been twice called to order by the presiding officer and shall, nevertheless, be guilty of a third offence at the same meeting, the presiding officer may command him forthwith to quit the Grand Chapter, and he shall not again be admitted to that Convocation.

(16) Whoever shall be so unmasonic as to hiss at a Companion, or what he has said, shall be forthwith solemnly excluded from the Convocation, and declared incapable of being a member of any Grand Chapter till, at another Grand Convocation, he publicly owns his fault, and grace be granted.

(17) If any member of this Grand Chapter shall be guilty of disorderly behaviour, he shall for the first offence be called to order, for the second reprimanded by the presiding officer, and for the third he shall be suspended from a seat in the Grand Chapter during the pleasure of the same.

(18) When a motion is under debate, no motion shall be entertained except to lay on the table, to indefinitely postpone or to amend, and these motions shall take precedence in the order named.

(19) An amendment that entirely changes the subject of the original motion shall not be entertained as an amendment or substitute for the motion under debate.

(20) No Companion, except one who has voted with

the majority, shall be allowed to move for a reconsideration, and in this connection the word "majority" shall apply to the vote by which the question was first decided.

(21) After a motion has been stated by the presiding officer, it becomes the property of Grand Chapter, but may be withdrawn at any time previous to amendment, unless objected to by a member.

(22) There shall be no debate upon any question after it has been put by the presiding officer.

(23) All communications, motions, resolutions, shall be couched in respectful language.

(24) When the Grand First Principal or presiding officer is addressing Grand Chapter or a Companion speaking to a question, they shall not be interrupted by other Companions talking or passing between the speaker and the chair.

(25) Votes may be taken by a show of hands, unless a vote of Chapters is called for, which must be seconded by the representatives of, at least, five Chapters.

## FORMS

---

### Application for a Warrant of Constitution

TO THE MOST EXCELLENT GRAND PRINCIPALS AND THE  
GRAND CHAPTER OF ROYAL ARCH MASONS OF CANADA.

We the undersigned, being registered Royal Arch  
Masons, of the Chapters mentioned against our respec-  
tive names, pray for a warrant of constitution, empower-  
ing us to meet as a regular Chapter at \_\_\_\_\_ to be  
called \_\_\_\_\_ on the \_\_\_\_\_ day of \_\_\_\_\_ and there to  
discharge the duties of Royal Arch Masonry in a consti-  
tutional manner, according to the forms of the order and  
the rules and regulations of the Grand Chapter, and we  
have nominated and do recommend Companion  
to be First Principal Z, Companion  
to be Second Principal H., Companion  
to be Third Principal J.

The prayer of this petition being granted, we promise  
strict conformity to the ancient landmarks of the order,  
and the rules and regulations of the Grand Chapter.

*Dated at \_\_\_\_\_, etc., etc.*

*[To be signed by at least nine R. A. Masons.]*

---

### Application for Exaltation

TO THE EXCELLENT

*The Principals, Officers and Companions of the*  
*\_\_\_\_\_ Chapter of Royal Arch Masons, No. \_\_\_\_\_*

The undersigned, a Master Mason, raised in \_\_\_\_\_  
Lodge No. \_\_\_\_\_, under the jurisdiction of the Grand

Lodge, ——— respectfully offers himself as a candidate for advancement to the degrees of Mark Master, and Most Excellent Master, and exaltation to the supreme degree of the Holy Arch in ——— Chapter, No. ———. Should his petition be granted, he promises a cheerful compliance with all the forms and usages of the order.

Dated at, etc., etc.,  
Recommended by

(Signed) A. B.

C. D. ———  
E. F. ———

[Residence] ———.  
[Profession] ———.  
[Age] ———.

**Application for Membership**

TO THE EXCELLENT

*The Principals, Officers and Companions of the*  
——— Chapter of Royal Arch Masons, No. ———.

I, ——— of the ——— of ——— [Profession or Addition. ———]  
aged ———, being a Royal Arch Mason, am desirous of becoming a member of the ——— Chapter, No. ———

I was exalted in ——— Chapter, No. ———, and am in good standing in the Royal Craft.

Recommended by

——— }  
——— }  
——— }

———

**Certificate of Withdrawal from a Chapter**

To all Royal Arch Masons to whom these presents shall come, greeting:

This is to certify that Companion ———, who hath signed his name in the margin hereof is a regular Royal Arch Mason in good standing at this date, and is, at his own request, regularly discharged from membership in



the \_\_\_\_\_ Chapter, No.—, under the jurisdiction of the Grand Chapter of Canada.

Given under my hand and the seal of the Chapter at \_\_\_\_\_, etc.



\_\_\_\_\_ Z.

\_\_\_\_\_  
Scribe E.

### Proxy for a Chapter Appointing its Delegate to Grand Chapter

#### THIS IS TO CERTIFY

That at a \_\_\_\_\_ Convocation of the \_\_\_\_\_ Chapter, No. \_\_\_\_\_, held on the \_\_\_\_\_ day of \_\_\_\_\_, A. D. \_\_\_\_\_ Companion \_\_\_\_\_ was delegated to represent the said Chapter at the annual Convocation of Grand Chapter, to be held at \_\_\_\_\_, on the \_\_\_\_\_ day of \_\_\_\_\_, A. D. \_\_\_\_\_, and there to perform any and all acts which could be done by the duly qualified officers of the said Chapter were they personally present; promising to ratify and confirm all that the said delegate may lawfully do under such authority.

Given under our hands and the seal of the \_\_\_\_\_ Chapter \_\_\_\_\_, etc.



\_\_\_\_\_ Z.

\_\_\_\_\_  
Scribe E.

# INDEX

	PAGE
APPOINTED OFFICERS, G. Chap.....	4
who are eligible.....	5
APPEALS.....	19
who may make.....	19
to whom made..	39
AMENDMENTS to constitution.....	39
when to be made.....	2
AUTHORIZED WORK .....	31
BALLOT.....	31
must take place in R. A. Deg.....	32
who are entitled to vote.....	32
only one for the several degrees.....	32
penalty for violating secrecy:.....	32
when a proposition can be withdrawn..	32
if Com. reports favorable ballot cannot be postponed:..	32
how many black balls exclude.....	32
if objection filed after ballot, mode of procedure.....	32
CONVOICATIONS of Grand Chapter, when.....	4
Chapters neglecting to make returns.....	9
Conferring rank upon Companions.....	9
Compensation to officers.....	23
Chapter Books, which necessary .....	33
Dues payable to Grand Chapter.....	18
Demits, how granted.....	30
Dues in arrears, how to remit.....	31
Elected officers, Grand Chapter.....	3
Subordinate Chapter .....	20
Executive Committee, Chapter.....	17
duties of.....	17
Emergent Conv. of G. Chapter.....	4
FEEs, dues, etc., to Grand Chapter.....	18
FORMS for Warrants.....	43
Exaltation.....	43
Membership.....	44
Withdrawal.....	44
Proxies.....	45
GRAND CHAPTER, of whom composed.....	2
officers removing from the Jurisdiction disqualified.....	8
officers ceasing to be a member of a Subordinate Chap..	8
officers' resignation.....	9

# INDEX

47

	PAGE
<b>GRAND FIRST PRINCIPAL, powers of..</b> .....	10
<b>issue dispensation</b> .....	10
<b>appoint representatives</b> .....	10
<b>decide Masonic questions</b> .....	11
<b>convene chapters</b> .....	11
<b>suspend a chapter</b> .....	11
<b>summon any chapter</b> .....	11
<b>official application through G.S.E.</b> .....	11
<b>may preside</b> .....	12
<b>in case of absence, inability or death, who presides</b> .....	12
<b>GRAND SECOND PRINCIPAL, Chairman of Ex. Com:</b> .....	12
<b>Report to G. F. Prin.</b> .....	12
<b>GRAND THIRD PRINCIPAL, Vice-President of Ex. Com:</b> .....	13
<b>Report to G. F. Prin.</b> .....	13
<b>GRAND SUPERINTENDENT OF D, who are eligible</b> .....	13
<b>how elected</b> .....	13
<b>must reside in the Dist</b> .....	13
<b>when he may preside</b> .....	13
<b>summon chapters to attend him</b> .....	13
<b>recommend Dispensations</b> .....	13
<b>when his report is to be made</b> .....	14
<b>power to remove chapters</b> .....	14
<b>grant Dispensations</b> .....	14
<b>Grand Treasurer, duties of</b> .....	14
<b>Grand Scribe E., duties of</b> .....	15
<b>Grand Scribe N., duties of</b> .....	16
<b>Grand P. Sojourner, duties of</b> .....	16
<b>Grand S. Sojourner, duties of</b> .....	16
<b>Grand J. Sojourner, duties of</b> .....	16
<b>Grand Lecturer, duties of</b> .....	16
<b>Grand Lecturer, compensation</b> .....	17
<b>Grand Janitor</b> .....	17
<b>Government of Subordinate Chapters</b> .....	20
<b>Installation Grand Officers</b> .....	6
<b>Jewels, of officers</b> .....	36
<b>Life Membership</b> .....	29
<b>Meeting of Executive Committee</b> .....	7
<b>Membership Subordinate Chapter</b> .....	27
<b>Membership Application</b> .....	27
<b>Membership Ballot</b> .....	27
<b>Membership Qualification</b> .....	27
<b>Members of Grand Chapter</b> .....	4
<b>Name of Grand Chapter</b> .....	1
<b>Organization</b> .....	1
<b>Officers G. Cha ., how chosen</b> .....	5
<b>Officers Subordinate Chap., how elected</b> .....	22

	PAGE
Officers Subordinate Chap., how appointed.....	22
Officers of Grand and Subordinate Chapters must take an OB..	9
Powers and Authority of G. Chap.....	1
Proxies, how chosen.....	8
Public Processions.....	33
Public Processions, dispensation for regalia.....	33
Quorum in G. Chap., how many form.....	5
Qualification of G. Chap. Officer.....	5
Regalia, R. A.....	34
Remission of G. Chap. Dues.....	19
Robes of Officers of Chapters.....	39
Rules of Order.....	40
Repeal of former Constitution, etc.....	39
Suspension for U. M. C. in G. Lodge suspends in G. Chap.....	9
SUBORDINATE CHAPTERS.....	20
Officers of.....	25
Constitution of.....	20
Warrants and Seal.....	20
Mode of application for Warrant.....	21
Power to make By-Laws, etc.....	21
Transferring Dormant Warrants prohibited.....	21
Titles of Grand Chap. Officers.....	3
Votes and Voters.....	7
Vacancies in Grand Chapter, how filled.....	9

