

**CIHM
Microfiche
Series
(Monographs)**

**ICMH
Collection de
microfiches
(monographies)**



Canadian Institute for Historical Microreproductions / Institut canadien de microreproductions historiques

© 1997

The copy filmed here has been reproduced thanks to the generosity of:

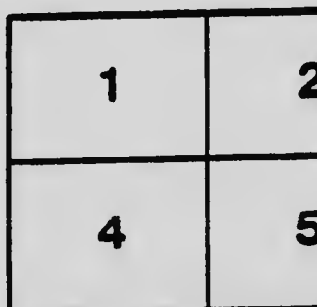
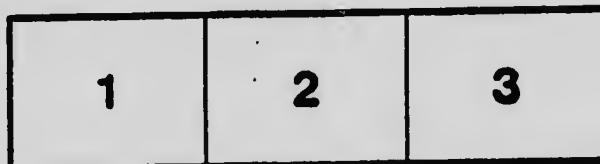
National Library of Canada

The images appearing here are the best quality possible considering the condition and legibility of the original copy and in keeping with the filming contract specifications.

Original copies in printed paper covers are filmed beginning with the front cover and ending on the last page with a printed or illustrated impression, or the back cover when appropriate. All other original copies are filmed beginning on the first page with a printed or illustrated impression, and ending on the last page with a printed or illustrated impression.

The last recorded frame on each microfiche shell contain the symbol \rightarrow (meaning "CONTINUED"), or the symbol ∇ (meaning "END"), whichever applies.

Maps, plates, charts, etc., may be filmed at different reduction ratios. Those too large to be entirely included in one exposure are filmed beginning in the upper left hand corner, left to right and top to bottom, as many frames as required. The following diagrams illustrate the method:



L'exemplaire filmé fut reproduit grâce à la générosité de:

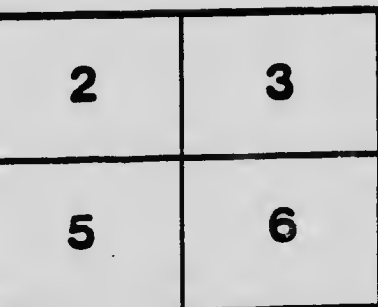
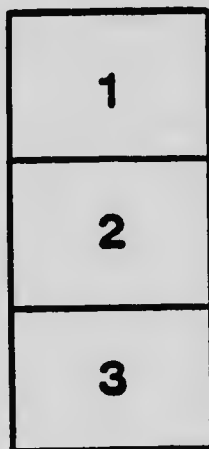
Bibliothèque nationale du Canada

Les images suivantes ont été reproduites avec le plus grand soin, compte tenu de la condition et de la netteté de l'exemplaire filmé, et en conformité avec les conditions du contrat de filmage.

Les exemplaires originaux dont la couverture en papier est imprimée sont filmés en commençant par le premier plat et en terminant soit par le dernière page qui comporte une empreinte d'impression ou d'illustration, soit par le second plat, selon le cas. Tous les autres exemplaires originaux sont filmés en commençant par la première page qui comporte une empreinte d'impression ou d'illustration et en terminant par la dernière page qui comporte une telle empreinte.

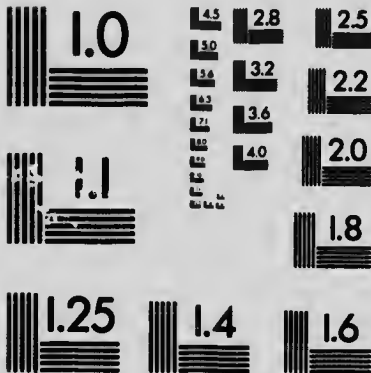
Un des symboles suivants apparaîtra sur la dernière image de chaque microfiche, selon le cas: le symbole \rightarrow signifie "A SUIVRE", le symbole ∇ signifie "FIN".

Les cartes, planches, tableaux, etc., peuvent être filmés à des taux de réduction différents. Lorsque le document est trop grand pour être reproduit en un seul cliché, il est filmé à partir de l'angle supérieur gauche, de gauche à droite, et de haut en bas, en prenant le nombre d'images nécessaire. Les diagrammes suivants illustrent la méthode.



MICROCOPY RESOLUTION TEST CHART

(ANSI and ISO TEST CHART No. 2)



APPLIED IMAGE Inc

1653 East Main Street
Rochester, New York 14609 USA
(716) 482 - 0300 - Phone
(716) 288 - 5989 - Fax

DEPARTMENT OF AGRICULTURE.

OFFICE OF THE

DAIRY AND COLD STORAGE COMMISSIONER

OTTAWA, JANUARY 1, 1913.

RE CREAMERY COLD STORAGE BONUSES.

To Creamery Owners:

By direction of the Minister announcement is hereby made that Creamery Cold Storage Bonuses will be paid in 1913, and until further notice, on the following terms and conditions :- -

A bonus of \$100 will be paid *only* for creamery cold storages constructed on what is known as the Circulation System, the plans and specifications for which are contained in Bulletin No. 36 of the Dairy and Cold Storage Series. Blue prints of these plans on a working scale will be furnished on application.

The Cylinder System on which the bonus has been paid in the past has proved to be unsatisfactory, for the reason that the filling of the cylinders is seldom properly attended to.

The Circulation System, while costing more to install than the Cylinder and other systems, is cheaper in the end if the labour of filling the cylinders or ice boxes every day is taken into account.

Applications for bonuses must be made before the first of May, in order to secure payment that year. Forms of application will be supplied on request to the Dairy and Cold Storage Commissioner, Ottawa. Monthly temperature record forms will also be supplied, on which a daily record of temperature must be made. These temperature reports are to be sent to the Cold Storage Division, Ottawa, regularly at the end of each month, beginning with the month of May.

An Inspector will examine all cold storages for which bonuses are asked some time during the season, and if they are found to have been constructed according to the plans and specifications and to have been properly maintained during the warm weather, the bonus will be paid at the end of the manufacturing season.

This circular cancels D. & C. S. Circular No. 4, Feb. 27th, 1912.

J. A. RUDDICK,

Dairy and Cold Storage Commissioner.



