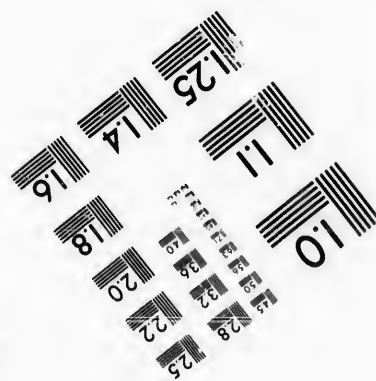
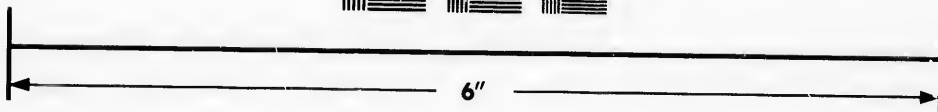
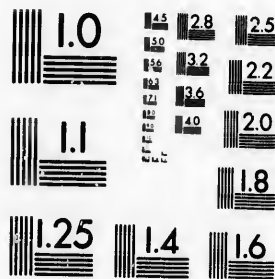


**IMAGE EVALUATION
TEST TARGET (MT-3)**



**Photographic
Sciences
Corporation**

23 WEST MAIN STREET
WEBSTER, N.Y. 14580
(716) 872-4503



**CIHM/ICMH
Microfiche
Series.**

**CIHM/ICMH
Collection de
microfiches.**



Canadian Institute for Historical Microreproductions / Institut canadien de microreproductions historiques



© 1986

The copy filmed here has been reproduced thanks to the generosity of:

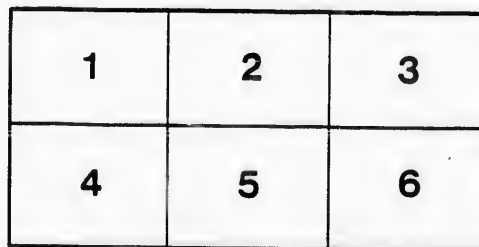
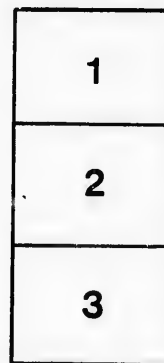
D. B. Weldon Library
University of Western Ontario
(Regional History Room)

The images appearing here are the best quality possible considering the condition and legibility of the original copy and in keeping with the filming contract specifications.

Original copies in printed paper covers are filmed beginning with the front cover and ending on the last page with a printed or illustrated impression, or the back cover when appropriate. All other original copies are filmed beginning on the first page with a printed or illustrated impression, and ending on the last page with a printed or illustrated impression.

The last recorded frame on each microfiche shall contain the symbol \rightarrow (meaning "CONTINUED"), or the symbol ∇ (meaning "END"), whichever applies.

Maps, plates, charts, etc., may be filmed at different reduction ratios. Those too large to be entirely included in one exposure are filmed beginning in the upper left hand corner, left to right and top to bottom, as many frames as required. The following diagrams illustrate the method:



L'exemplaire filmé fut reproduit grâce à la générosité de:

D. B. Weldon Library
University of Western Ontario
(Regional History Room)

Les images suivantes ont été reproduites avec le plus grand soin, compte tenu de la condition et de la netteté de l'exemplaire filmé, et en conformité avec les conditions du contrat de filmage.

Les exemplaires originaux dont la couverture en papier est imprimée sont filmés en commençant par le premier plat et en terminant soit par la dernière page qui comporte une empreinte d'impression ou d'illustration, soit par le second plat, selon le cas. Tous les autres exemplaires originaux sont filmés en commençant par la première page qui comporte une empreinte d'impression ou d'illustration et en terminant par la dernière page qui comporte une telle empreinte.

Un des symboles suivants apparaîtra sur la dernière image de chaque microfiche, selon le cas: le symbole \rightarrow signifie "A SUIVRE", le symbole ∇ signifie "FIN".

Les cartes, planches, tableaux, etc., peuvent être filmés à des taux de réduction différents. Lorsque le document est trop grand pour être reproduit en un seul cliché, il est filmé à partir de l'angle supérieur gauche, de gauche à droite, et de haut en bas, en prenant le nombre d'images nécessaire. Les diagrammes suivants illustrent la méthode.

Season 1886.

MAPLE LEAF

Base Ball Club,

Guelph, Ont.

Geo. Sleeman, President.

Club Rules.



1.—Each player must keep his uniform clean and neat, and in good repair, at his own expense, and must see that the spikes in his shoes are securely fastened.

2.—Players in uniform must not converse or mingle with friends in the audience.

3.—Drinking and carousing are at all times forbidden.

4.—Smoking while in uniform is forbidden.

5.—No players excepting the captain or his assistant shall dispute the decision of the umpire, unless called upon by the umpire or the captain to give testimony.

6.—When at home players must not appear on the ground in uniform earlier than thirty minutes previous to the hour advertised for commencing the game.

7.—When on visiting grounds players must enter the field together, or nearly so as possible.

8.—Fungo batting in the presence of an audience is prohibited.

9.—Players must not invite friends or acquaintances to ride in conveyances to and from the grounds without permission of the manager.

10.—Players must deport themselves in a gentlemanly manner at all times; to dress neatly; to avoid association with gamblers or men who are known to bet publicly on the games.

11.—While travelling players must conduct themselves in a quiet and gentlemanly manner, and guard against practices which will injure (their own reputation, or that of the club.

12.—In all games players must implicitly obey the captain.

13.—In all games players must exert themselves.

14.—When at home players must report at the ground every morning at 10 o'clock, and afternoon at 2 o'clock.

15.—Players must not give the bats away that are club property.

16.—Players must not pass friends or outsiders to the ground

17.—When on trips the men must not be out of the hotel later than 11 o'clock, p. m., without permission of the manager.

Any infraction of these rules will entail a fine of from \$5 to \$25.

GEO. SLEEMAN,

PRESIDENT.

