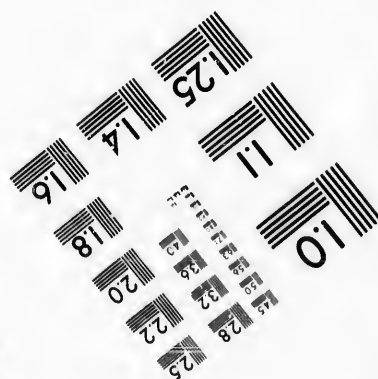
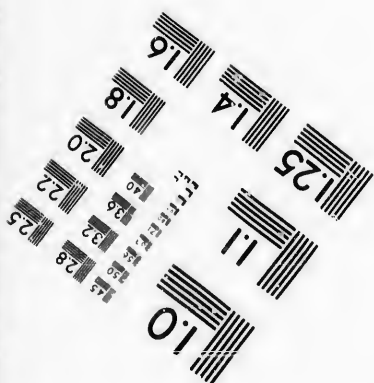
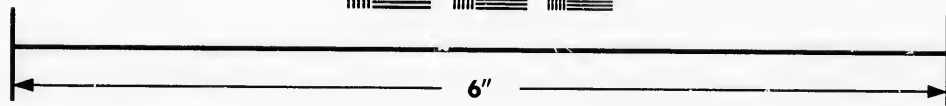
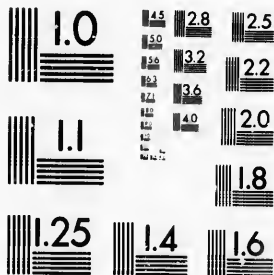


**IMAGE EVALUATION
TEST TARGET (MT-3)**



**Photographic
Sciences
Corporation**

23 WEST MAIN STREET
WEBSTER, N.Y. 14580
(716) 872-4503

15 28 25
12 13 22
14 16 20
18 19 21
23 24 26
27 29 30
31 32 33
34 35 36
37 38 39
40 41 42
43 44 45
46 47 48
49 50 51
52 53 54
55 56 57
58 59 60
61 62 63
64 65 66
67 68 69
70 71 72
73 74 75
76 77 78
79 80 81
82 83 84
85 86 87
88 89 90
91 92 93
94 95 96
97 98 99
100

**CIHM/ICMH
Microfiche
Series.**

**CIHM/ICMH
Collection de
microfiches.**



Canadian Institute for Historical Microreproductions / Institut canadien de microreproductions historiques

11
10
9
8
7
6
5
4
3
2
1

© 1986

Technical and Bibliographic Notes/Notes techniques et bibliographiques

The Institute has attempted to obtain the best original copy available for filming. Features of this copy which may be bibliographically unique, which may alter any of the images in the reproduction, or which may significantly change the usual method of filming, are checked below.

L'Institut a microfilmé le meilleur exemplaire qu'il lui a été possible de se procurer. Les détails de cet exemplaire qui sont peut-être uniques du point de vue bibliographique, qui peuvent modifier une image reproduite, ou qui peuvent exiger une modification dans la méthode normale de filmage sont indiqués ci-dessous.

- Coloured covers/
Couverture de couleur
- Covers damaged/
Couverture endommagée
- Covers restored and/or laminated/
Couverture restaurée et/ou pelliculée
- Cover title missing/
Le titre de couverture manque
- Coloured maps/
Cartes géographiques en couleur
- Coloured ink (i.e. other than blue or black)/
Encre de couleur (i.e. autre que bleue ou noire)
- Coloured plates and/or illustrations/
Planches et/ou illustrations en couleur
- Bound with other material/
Relié avec d'autres documents
- Tight binding may cause shadows or distortion
along interior margin/
La reliure serrée peut causer de l'ombre ou de la
distorsion le long de la marge intérieure
- Blank leaves added during restoration may
appear within the text. Whenever possible, these
have been omitted from filming/
Il se peut que certaines pages blanches ajoutées
lors d'une restauration apparaissent dans le texte,
mais, lorsque cela était possible, ces pages n'ont
pas été filmées.
- Additional comments: / [Printed ephemera] 1 sheet (verso blank)
Commentaires supplémentaires:

- Coloured pages/
Pages de couleur
- Pages damaged/
Pages endommagées
- Pages restored and/or laminated/
Pages restaurées et/ou pelliculées
- Pages discoloured, stained or foxed/
Pages décolorées, tachetées ou piquées
- Pages detached/
Pages détachées
- Showthrough/
Transparence
- Quality of print varies/
Qualité inégale de l'impression
- Includes supplementary material/
Comprend du matériel supplémentaire
- Only edition available/
Seule édition disponible
- Pages wholly or partially obscured by errata
slips, tissues, etc., have been refilmed to
ensure the best possible image/
Les pages totalement ou partiellement
obscurcies par un feuillet d'errata, une pelure,
etc., ont été filmées à nouveau de façon à
obtenir la meilleure image possible.

This item is filmed at the reduction ratio checked below/
Ce document est filmé au taux de réduction indiqué ci-dessous.

10X	14X	18X	22X	26X	30X
<input type="checkbox"/>	<input type="checkbox"/>	<input type="checkbox"/>	<input type="checkbox"/>	<input checked="" type="checkbox"/>	<input type="checkbox"/>
12X	16X	20X	24X	28X	32X

The copy filmed here has been reproduced thanks to the generosity of:

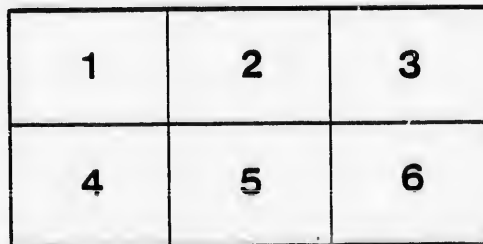
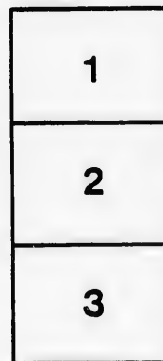
D.B. Weldon Library
University of Western Ontario
(Regional History Room)

The images appearing here are the best quality possible considering the condition and legibility of the original copy and in keeping with the filming contract specifications.

Original copies in printed paper covers are filmed beginning with the front cover and ending on the last page with a printed or illustrated impression, or the back cover when appropriate. All other original copies are filmed beginning on the first page with a printed or illustrated impression, and ending on the last page with a printed or illustrated impression.

The last recorded frame on each microfiche shell contains the symbol \rightarrow (meaning "CONTINUED"), or the symbol ∇ (meaning "END"), whichever applies.

Maps, plates, charts, etc., may be filmed at different reduction ratios. Those too large to be entirely included in one exposure are filmed beginning in the upper left hand corner, left to right and top to bottom, as many frames as required. The following diagrams illustrate the method:



L'exemplaire filmé fut reproduit grâce à la générosité de:

D.B. Weldon Library
University of Western Ontario
(Regional History Room)

Les images suivantes ont été reproduites avec le plus grand soin, compte tenu de la condition et de la netteté de l'exemplaire filmé, et en conformité avec les conditions du contrat de filmage.

Les exemplaires originaux dont la couverture en papier est imprimée sont filmés en commençant par le premier plat et en terminant soit par la dernière page qui comporte une empreinte d'impression ou d'illustration, soit par le second plat, selon le cas. Tous les autres exemplaires originaux sont filmés en commençant par la première page qui comporte une empreinte d'impression ou d'illustration et en terminant par la dernière page qui comporte une telle empreinte.

Un des symboles suivants apparaîtra sur la dernière image de chaque microfiche, selon le cas: le symbole \rightarrow signifie "A SUIVRE", le symbole ∇ signifie "FIN".

Les cartes, planches, tableaux, etc., peuvent être filmés à des taux de réduction différents. Lorsque le document est trop grand pour être reproduit en un seul cliché, il est filmé à partir de l'angle supérieur gauche, de gauche à droite, et de haut en bas, en prenant le nombre d'images nécessaire. Les diagrammes suivants illustrent la méthode.

ails
du
modifier
une
page

rrata
to

pelure,
n à

32X

SURE CURE FOR LA GRIFFE, IN ALL ITS FORMS.

SPECIAL REMEDY
-FOR-

ASTHMA.

ADVICE FREE!

STOP RIGHT HERE AND READ THIS!

SPECIAL REMEDY
-FOR-

Hear the voice of the people of Glencoe, and others too numerous to mention. It has been rumoured that

PROFESSOR A. H. WESLEY

of the Village of Glencoe, was summoned by the Doctors
NEVERTHELESS IT IS TRUE.

I will call your attention to the evidence of Mrs. McEachern, of Glencoe, who swears that Prof. Wesley did only sell her remedies that did her good, and would have done her more good had she persisted in the use of them longer. Her trouble was a bad case of Liver Complaint and General Weakness.

Also, Mr. Hector McFarlane, Clerk of the Township of Ekfrid, near Glencoe, who swears that his daughter had been ailing for nearly five years when she began to use the Professor's medicine, and that it did her so much good that she persisted in the use of it several months. Her case was pronounced Consumption by the most eminent physicians.

Also, Mr. James Mitchel, of Glencoe, who swears that he had been treated by nine different Physicians, and three of the most eminent of the nine said he had Consumption. He afterwards could not walk twenty rods, and by the persistent use of Prof. Wesley's Archangel Herb Remedy for four months, he was well and able to work. Also, he used it successfully in a bad case of Catarrh.

Also, Mr. Frank Siddall, a prominent farmer near Glencoe, who swears that his daughter, after being treated by several physicians, was cured of a bad Cancerous Sore Mouth and Catarrh of the Throat in a few weeks by using Prof. Wesley's Archangel Herb Remedy.

There were several other evidences in favor of the Professor and his Archangel Herb Remedy, but they were not called up, for the simple reason that the Magistrate refused to write them down. His reason was that it was giving the Professor a free advertisement. But he accepted the evidence of the Detective, who is hired by the Medical Association for the purpose of looking after any person that cures people and charges for it. The Detective acknowledged under oath that he had lied to the Professor.

The Professor particularly calls the reader's attention to the fact that he does not charge for curing and does not practice, but he charges for his Herb Remedies that are especially adapted to cure all Inherited and Chronic Diseases that are supposed to be incurable in their first and second stages.

It has been mentioned that there were several other evidences in the Professor's behalf. I will now call your attention to a few of them:—

Mrs. W. M. Clarke, of Dutton, who was cured of Inflammatory and Sciatic Rheumatism.

Miss Lena Graham, of Wallacetown, who was drawn all out of shape by a bad case of Rheumatism, was cured in a few weeks by the use of Prof. Wesley's Archangel Herb Remedy.

Mrs. Peter McCracken, of Glencoe, who was cured of a Cancerous Sore Mouth, General Debility and Headache.

Mr. Wm. Siddall has used it successfully thus far for general use.

Mrs. Charles Hurley, near Glencoe, used it successfully in a bad case of Salt Rheum of long standing.

Mrs. E. McNabb finds it a grand remedy for Nervous Headache, and also to prevent Colds and keep off the La Grippe.

Mrs. Robert Tully, of Oakdale P. O., found it a grand remedy for Liver Complaint, Headache and Catarrh.

Mr. James Dobbyn, of Shetland, has used it successfully in a bad case of Liver and Kidney Complaint, and a bad case of Sciatic Rheumatism.

Miss Jane McNabb, Glencoe, has used it thus far successfully in a bad case of Catarrh and Asthma.

Mrs. Charles Armstrong, of Mosside P. O., used it successfully in a bad case of Blood Poisoning and Erysipelas caused by a bruise, which formed a sore, and the Erysipelas and Blood Poisoning set in. This was after the use of several medicines for about a year, also a prominent physician of London advised that she would have to go to the hospital for treatment. But by the persistent use of the Archangel Herb Remedy for one month, she considered herself perfectly cured.

I will not tire the reader by too much unnecessary reading, for this is enough to convince any sceptical person that the Archangel Herb Remedy is an infallible and never-failing medicine for increasing the value of the blood in the human body, for restoring the purity and vitality, thereby imparting to the brain, nerves and the whole system, tone, vigor and perfect health. It is unnecessary to enumerate the different complaints that it can be used for, as there are five different preparations of this remedy. It would be well in all Chronic and Hereditary Diseases, those that are pronounced incurable by the physician who uses the Chemical Compounds, to try the Archangel Remedies, for they are purely vegetable, hence are nature's remedies, and will remove the cause, and nature will work her own cure for all diseases coming from an unhealthy state of the system.

It might be mentioned right here that the Professor has been brought up by his mother, a doctor, and his aunt, a German midwife and nurse and physician. During this time he had the privilege of using the remedies and nursing the sick. In the meantime he was accustomed to gather the herbs, roots, gums, barks, seeds and berries, and has all his lifetime and since been using these remedies which have been used among his people for over three generations, and may be called the German secret of remedies.

There are two ways of selling remedies.

There are some people who take great pleasure in telling what good the Archangel Herb Remedy has done for them. This is told for the benefit of suffering humanity. And there are some who have doctored with the most eminent physicians and used patent medicines until disgusted, and say they are through taking trash.

They would rejoice in getting some remedy that would cure them, but they would like to have it unknown until cured.

Such persons can procure the remedy by addressing all private letters to Box 246, Glencoe. Medicines delivered free of charge. Also, for further information, call at Mr. Wm. Siddall's, one mile southeast of Glencoe, where all the medicines can be procured by box or bottle. AGENTS WANTED.

