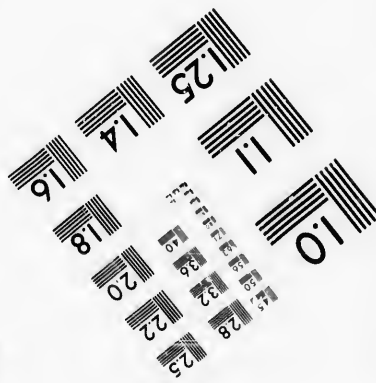
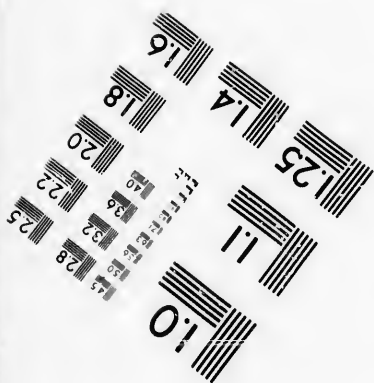
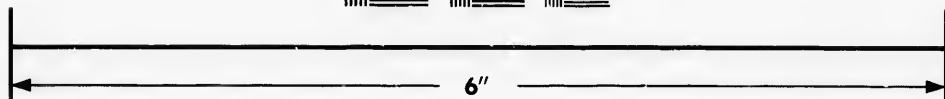
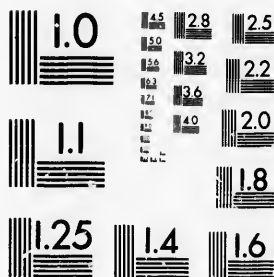


**IMAGE EVALUATION
TEST TARGET (MT-3)**



**Photographic
Sciences
Corporation**

23 WEST MAIN STREET
WEBSTER, N.Y. 14580
(716) 872-4503

15 28
18 32 25
20 22
1.8

**CIHM/ICMH
Microfiche
Series.**

**CIHM/ICMH
Collection de
microfiches.**



Canadian Institute for Historical Microreproductions / Institut canadien de microreproductions historiques

10
1.8

© 1986

Technical and Bibliographic Notes/Notes techniques et bibliographiques

The Institute has attempted to obtain the best original copy available for filming. Features of this copy which may be bibliographically unique, which may alter any of the images in the reproduction, or which may significantly change the usual method of filming, are checked below.

L'Institut a microfilmé le meilleur exemplaire qu'il lui a été possible de se procurer. Les détails de cet exemplaire qui sont peut-être uniques du point de vue bibliographique, qui peuvent modifier une image reproduite, ou qui peuvent exiger une modification dans la méthode normale de filmage sont indiqués ci-dessous.

- | | |
|--|--|
| <input type="checkbox"/> Coloured covers/
Couverture de couleur | <input type="checkbox"/> Coloured pages/
Pages de couleur |
| <input type="checkbox"/> Covers damaged/
Couverture endommagée | <input type="checkbox"/> Pages damaged/
Pages endommagées |
| <input type="checkbox"/> Covers restored and/or laminated/
Couverture restaurée et/ou pelliculée | <input type="checkbox"/> Pages restored and/or laminated/
Pages restaurées et/ou pelliculées |
| <input type="checkbox"/> Cover title missing/
Le titre de couverture manque | <input checked="" type="checkbox"/> Pages discoloured, stained or foxed/
Pages décolorées, tachetées ou piquées |
| <input type="checkbox"/> Coloured maps/
Cartes géographiques en couleur | <input type="checkbox"/> Pages detached/
Pages détachées |
| <input type="checkbox"/> Coloured ink (i.e. other than blue or black)/
Encre de couleur (i.e. autre que bleue ou noire) | <input checked="" type="checkbox"/> Showthrough/
Transparence |
| <input type="checkbox"/> Coloured plates and/or illustrations/
Planches et/ou illustrations en couleur | <input type="checkbox"/> Quality of print varies/
Qualité inégale de l'impression |
| <input type="checkbox"/> Bound with other material/
Relié avec d'autres documents | <input type="checkbox"/> Includes supplementary material/
Comprend du matériel supplémentaire |
| <input type="checkbox"/> Tight binding may cause shadows or distortion
along interior margin/
La reliure serrée peut causer de l'ombre ou de la
distorsion le long de la marge intérieure | <input type="checkbox"/> Only edition available/
Seule édition disponible |
| <input type="checkbox"/> Blank leaves added during restoration may
appear within the text. Whenever possible, these
have been omitted from filming/
Il se peut que certaines pages blanches ajoutées
lors d'une restauration apparaissent dans le texte,
mais, lorsque cela était possible, ces pages n'ont
pas été filmées. | <input type="checkbox"/> Pages wholly or partially obscured by errata
slips, tissues, etc., have been refilmed to
ensure the best possible image/
Les pages totalement ou partiellement
obscurcies par un feuillet d'errata, une pelure,
etc., ont été filmées à nouveau de façon à
obtenir la meilleure image possible. |
- Additional comments: [Printed ephemera] [4] p.
Commentaires supplémentaires:

This item is filmed at the reduction ratio checked below/
Ce document est filmé au taux de réduction indiqué ci-dessous.

10X	12X	14X	16X	18X	20X	22X	24X	26X	28X	30X	32X
<input type="checkbox"/>	<input type="checkbox"/>	<input type="checkbox"/>	<input type="checkbox"/>	<input type="checkbox"/>	<input type="checkbox"/>	<input type="checkbox"/>	<input type="checkbox"/>	<input checked="" type="checkbox"/>	<input type="checkbox"/>	<input type="checkbox"/>	<input type="checkbox"/>

The copy filmed here has been reproduced thanks to the generosity of:

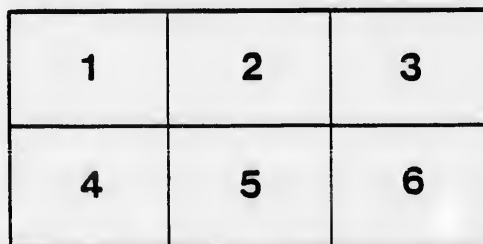
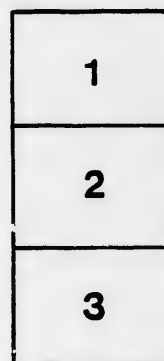
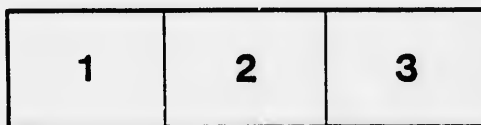
D. B. Weldon Library
University of Western Ontario
(Regional History Room)

The images appearing here are the best quality possible considering the condition and legibility of the original copy and in keeping with the filming contract specifications.

Original copies in printed paper covers are filmed beginning with the front cover and ending on the last page with a printed or illustrated impression, or the back cover when appropriate. All other original copies are filmed beginning on the first page with a printed or illustrated impression, and ending on the last page with a printed or illustrated impression.

The last recorded frame on each microfiche shall contain the symbol \rightarrow (meaning "CONTINUED"), or the symbol ∇ (meaning "END"), whichever applies.

Maps, plates, charts, etc., may be filmed at different reduction ratios. Those too large to be entirely included in one exposure are filmed beginning in the upper left hand corner, left to right and top to bottom, as many frames as required. The following diagrams illustrate the method:



L'exemplaire filmé fut reproduit grâce à la générosité de:

D. B. Weldon Library
University of Western Ontario
(Regional History Room)

Les images suivantes ont été reproduites avec le plus grand soin, compte tenu de la condition et de la netteté de l'exemplaire filmé, et en conformité avec les conditions du contrat de filmage.

Les exemplaires originaux dont la couverture en papier est imprimée sont filmés en commençant par le premier plat et en terminant soit par la dernière page qui comporte une empreinte d'impression ou d'illustration, soit par le second plat, selon le cas. Tous les autres exemplaires originaux sont filmés en commençant par la première page qui comporte une empreinte d'impression ou d'illustration et en terminant par la dernière page qui comporte une telle empreinte.

Un des symboles suivants apparaîtra sur la dernière image de chaque microfiche, selon le cas: le symbole \rightarrow signifie "A SUIVRE", le symbole ∇ signifie "FIN".

Les cartes, planches, tableaux, etc., peuvent être filmés à des taux de réduction différents. Lorsque le document est trop grand pour être reproduit en un seul cliché, il est filmé à partir de l'angle supérieur gauche, de gauche à droite, et de haut en bas, en prenant le nombre d'images nécessaire. Les diagrammes suivants illustrent la méthode.

ails
du
odifier
une
mage

rrata
co

pelure,
n à



32X

Ladies! the only way to get help is through the "Free Press" Want Column.

READ AND REFLECT.

NOTE TO OUR PATRONS—If the individual members of an audience would stop to think for just an instant, they would undoubtedly appreciate the fact that the habit of rising from their seats and leaving the theatre before the curtain falls, is a most annoying one, and one that should be stopped. We therefore beg our audiences to kindly remain in their seats until the close of the performance.

Evenings—doors open at 7:30; curtain rises at 8:15 sharp. Matinee—doors open at 1:30; curtain rises at 2:30 sharp.

Plan opens for each attraction two days in advance.



Seats can be secured by mail, telegraph or telephone. Telephone 732.
Physicians are requested to register at the Box Office, leaving seat number, as this will enable Ushers to find them if called for, without disturbing the audience.
Carriages can be ordered at the Box Office or of the Chief Usher.

Please report to the management any intention on the part of the employees. Overcoats, packages and umbrellas checked for a small charge.
For all lost articles apply at Box Office. Opera Glasses can be rented by applying to Ushers or at Box Office.

It is strange, but there is a class of people that seem to take an intense delight in bespattering the floor with tobacco juice and in being boisterous and using profane language. These people should know at once that the court should their immediate expulsion, should the management see fit to exercise its rights.

BETWEEN the Acts, and after the Opera is over go to the

OPERA + CIGAR STORE

For Cigars, Cigarettes, Etc.
LOUIS RISK.

W. T. STRONG,
Dispensing +
Chemist

184 Dundas Street,
LONDON - - - ONTARIO.

HATS!

→ LATEST ←

American and English Shapes

In all Colors,

→ JUST OPENED. ←

Rivard

LONDON'S FASHIONABLE HATTER,

400 Richmond St., LONDON, ONT.

C. J. WHITNEY LESSEE AND MANAGER.
A. E. ROOTE REPRESENTATIVE.
FRED. L. EVANS DIRECTOR OF ORCHESTRA.
GUS. SCHABACKER STAGE MANAGER.
JAMES LAMB CHIEF USHER.

Monday, April 10th, 1893.

PROGRAMME.

"THE LEAVENWORTH CASE,"

BY

Anna Katharine Green, (Mrs. Rohlis.)

A "LAW ROMANCE" IN FIVE ACTS

UNDER THE MANAGEMENT OF

FRANK CARLOS GRIFFITH.

(Programme Continued on Page 3.)

FINE FOOTWEAR
SPRING AND SUMMER STYLES

— AT THE —

Central Shoe Store

145 DUNDAS STREET.

Our special lines in Ladies' Evening Shoes of the latest New York designs and shades are certainly charming; and our Gentlemen's Selections in all Standard Styles are unsurpassed for Quality and Finish.

High grades in all departments. True merit in every article. Honest quality everywhere. The people are delighted with our goods, and very agreeably surprised at the low prices at which we sell them.

JNO. S. BROWN

TELEPHONE 881.

OUR PROGRAM.

- FOR THE PEOPLE'S PERPETUAL PIC-NIC!
- THE GENUINE—
Heintzman & Co., Pianos!
- THE WORLD-FAMED—
Emerson Pianos!
- THE UNEQUALLED—
Goderich Organs!
- THE PERFECT—
White Sewing Machines!
- AN ENDLESS DISPLAY OF—
Small Musical Instruments!
- A MODEL ASSORTMENT OF—
Strings, Fittings, Music Books, Etc.
- THE ALL-IMPORTANT—
Marriage Licenses!

These and countless other good things can be obtained at "COLWELL'S POPULAR MUSIC HOUSE," 171 Dundas Street, LONDON.

WE KEEP A FIRST-CLASS MUSIC STORE.

Our prices and Terms are the most reasonable. We deal very liberally with everybody. From distant buyers we invite orders by mail, Telephone or Telegraph.

C. P. M. H. Leads all Competitors.
CHAS. F. COLWELL, Proprietor.

The only place in the City to get the latest

SCARFS.

Burns

✦ The Furnisher.

A MAN

Wants to see you Between Acts

Jerry McDonald's

Across the Road.

181 KING STREET.

If you want the best take the "Free Press," all the news.

Burns

* * **SAYS**
That the D B. Sac Suit
Will lead this Fall.

AND HE IS RIGHT.

GREAT PRIZE SALE

Every Cash Customer buying One Dollar's
worth or more of

WALL PAPER, *
WINDOW SHADES,
CORNICE POLES,
ARTISTS' MATERIALS,
PICTURE FRAMES,
* PICTURES,
ETC., ETC., ETC.

Stands the chance of securing a Prize worth from \$1.00
to \$20.00 according to amount of purchase.

E. N. HUNT,
190 DUNDAS ST., LONDON.

COMING.

MONDAY, APRIL 17th,

Charles · Frohman's

—COMPANY,—

—IN—

GLORIANA



The Plan for the
Liberal
Minstrels
Opens at Box Office
To-morrow
Morning,
At 9 o'clock sharp.



Marshall's * Mammoth * Livery

IS THE LARGEST AND THE OLDEST
ESTABLISHMENT IN THE CITY.

DOES THE LEADING BUSINESS IN

Carriages, Cabs, Coupes, *
* Victorias, Busses, Etc.

Every kind of Conveyance can be had there on the
shortest notice, by Telephone No. 436.

JAS. S. MARSHALL, Proprietor.

Dundas Street, London, Ont.

For Fashionable
WELL MADE SUITS

... CALL ON ...

Burns

The Tailor,
—Dundas Street.

Artistic * Floral * Design

EITHER WEDDING, PRESENTATION, DINNER TABLE, OR FUNERAL.

GO TO **DILLOWAY,**

The Leading Florist. 

248 Dundas Street.

Choicest Cut Flowers Always on Hand.

TELEPHONE 597.

VASELINE.

EVERYBODY knows the great value of this remedy in the household, but everybody does not know that the imitations of it, which some second class druggists dishonestly palm off on their customers, have little or no value. What should be understood by the public is, that it is not a mere question of comparative value between "Vaseline" and the imitations, but that the imitations do not effect the wonderful healing results of the world renowned "Vaseline," and that they are not the same thing nor made in the same way. Besides this, many of the imitations are harmful, irritant and not safe to use, while true Vaseline is perfectly harmless.

Perfect safety therefore lies in buying only original packages put up by and marked with our name.

CHESEBROUGH M'FG CO.

FLOWERS

—FOR—

OPERA OR BALL

—AT—

GAMMAGE'S

Duffield Block, 213 Dundas Street.

FRESH EVERY DAY.

TELEPHONE 807.

NEXT ATTRACTION

MONDAY, APRIL 17th,

Mr. Charles Frohman's

LATEST COMEDY SUCCESS,

"GLORIANA"

"A JOY FOREVER."

PRESENTED BY THE

Strongest
Comedy
Company
In America.

AS SEEN FOR

150 NIGHTS IN NEW YORK.
100 NIGHTS IN BOSTON.
50 NIGHTS IN CHICAGO.

AN UNPARALLELED INSTANTANEOUS HIT.

Prices, 25, 50, 75c. & \$1.00.



Plan opens Friday.

.. LADIES' TAILOR-MADE ..
COSTUMES & RIDING HABITS.

Burns

154 Dundas Street.

PROGRAMME CONTINUED.

 Synopsis. 

Act I. Mr. Leavenworth's Library. Evening.

Act II. Upper Hall; the Leavenworth Mansion. Morning after.

Act III. Lower Hall; the Leavenworth Mansion. One month later.

Act IV. Gryce's Home Office. Evening of next day.

Act V. Same as Act III. Lapse of three days.

Business Manager Wm. H. Daily
Treasurer Geo. F. Atherton
Stage Manager Bartly Cushing
Property Master Edward Groppe

Opera Glasses can be rented by applying to Ushers or at Box Office.

* THE PIANO *

Used in the Orchestra is from the

GERHARD HEINTZMAN CO.

69 and 75 Sherbourne St., Toronto.

LONDON WAREROOM: 226 DUNDAS STREET.

W. T. STRONG,

Dispensing *

* * Chemist

184 Dundas Street,

LONDON, - - - ONTARIO.

Parisian Steam Laundry

73 and 75 DUNDAS ST.



Laundry work transferred free of charge to and from Toronto, Hamilton, Brantford, Woodstock, Stratford, Guelph, London, St. Thomas, Chatham, Windsor and Sarnia.

J. K. SPRY, Manager.

