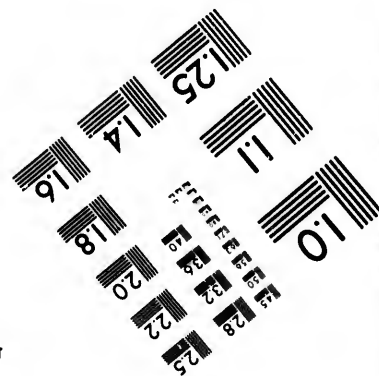
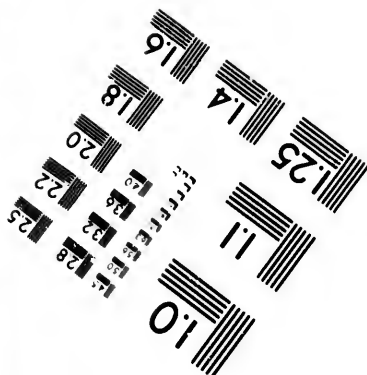
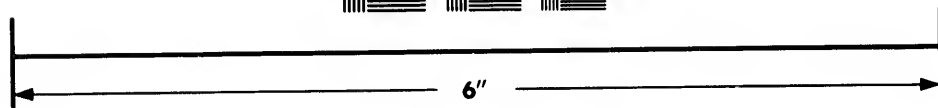
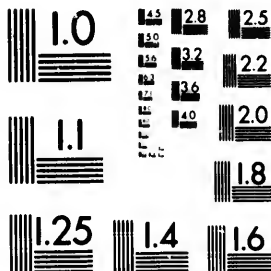


**IMAGE EVALUATION
TEST TARGET (MT-3)**



**Photographic
Sciences
Corporation**

23 WEST MAIN STREET
WEBSTER, N.Y. 14530
(716) 872-4503



**CIHM/ICMH
Microfiche
Series.**

**CIHM/ICMH
Collection de
microfiches.**



Canadian Institute for Historical Microreproductions / Institut canadien de microreproductions historiques



© 1981

Technical and Bibliographic Notes/Notes techniques et bibliographiques

The Institute has attempted to obtain the best original copy available for filming. Features of this copy which may be bibliographically unique, which may alter any of the images in the reproduction, or which may significantly change the usual method of filming, are checked below.

L'institut a microfilmé le meilleur exemplaire qu'il lui a été possible de se procurer. Les détails de cet exemplaire qui sont peut-être uniques du point de vue bibliographique, qui peuvent modifier une image reproduite, ou qui peuvent exiger une modification dans la méthode normale de filmage sont indiqués ci-dessous.

- Coloured covers/
Couverture de couleur
- Covers damaged/
Couverture endommagée
- Covers restored and/or laminated/
Couverture restaurée et/ou pelliculée
- Cover title missing/
Le titre de couverture manque
- Coloured maps/
Cartes géographiques en couleur
- Coloured ink (i.e. other than blue or black)/
Encre de couleur (i.e. autre que bleue ou noire)
- Coloured plates and/or illustrations/
Planches et/ou illustrations en couleur
- Bound with other material/
Relié avec d'autres documents
- Tight binding may cause shadows or distortion
along interior margin/
La reliure serrée peut causer de l'ombre ou de la
distortion le long de la marge intérieure
- Blank leaves added during restoration may
appear within the text. Whenever possible, these
have been omitted from filming/
Il se peut que certaines pages blanches ajoutées
lors d'une restauration apparaissent dans le texte,
mais, lorsque cela était possible, ces pages n'ont
pas été filmées.
- Additional comments:/
Commentaires supplémentaires:

- Coloured pages/
Pages de couleur
- Pages damaged/
Pages endommagées
- Pages restored and/or laminated/
Pages restaurées et/ou pelliculées
- Pages discoloured, stained or foxed/
Pages décolorées, tachetées ou piquées
- Pages detached/
Pages détachées
- Showthrough/
Transparence
- Quality of print varies/
Qualité inégale de l'impression
- Includes supplementary material/
Comprend du matériel supplémentaire
- Only edition available/
Seule édition disponible
- Pages wholly or partially obscured by errata
slips, tissues, etc., have been refilmed to
ensure the best possible image/
Les pages totalement ou partiellement
obscurcies par un feuillet d'errata, une pelure,
etc., ont été filmées à nouveau de façon à
obtenir la meilleure image possible.

This item is filmed at the reduction ratio checked below/
Ce document est filmé au taux de réduction indiqué ci-dessous.

10X	14X	18X	22X	26X	30X
<input type="checkbox"/>	<input type="checkbox"/>	<input type="checkbox"/>	<input checked="" type="checkbox"/>	<input type="checkbox"/>	<input type="checkbox"/>
12X	16X	20X	24X	28X	32X

The copy filmed here has been reproduced thanks to the generosity of:

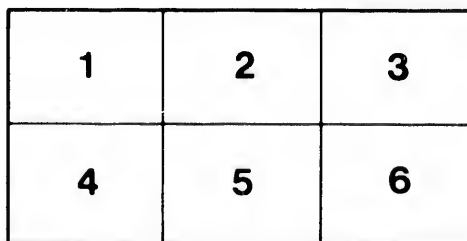
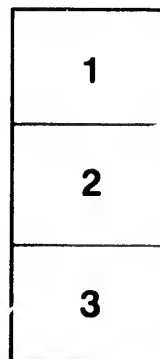
Library Division
Provincial Archives of British Columbia

The images appearing here are the best quality possible considering the condition and legibility of the original copy and in keeping with the filming contract specifications.

Original copies in printed paper covers are filmed beginning with the front cover and ending on the last page with a printed or illustrated impression, or the back cover when appropriate. All other original copies are filmed beginning on the first page with a printed or illustrated impression, and ending on the last page with a printed or illustrated impression.

The last recorded frame on each microfiche shall contain the symbol \rightarrow (meaning "CONTINUED"), or the symbol ∇ (meaning "END"), whichever applies.

Maps, plates, charts, etc., may be filmed at different reduction ratios. Those too large to be entirely included in one exposure are filmed beginning in the upper left hand corner, left to right and top to bottom, as many frames as required. The following diagrams illustrate the method:



L'exemplaire filmé fut reproduit grâce à la générosité de:

Library Division
Provincial Archives of British Columbia

Les images suivantes ont été reproduites avec le plus grand soin, compte tenu de la condition et de la netteté de l'exemplaire filmé, et en conformité avec les conditions du contrat de filmage.

Les exemplaires originaux dont la couverture en papier est imprimée sont filmés en commençant par le premier plat et en terminant soit par la dernière page qui comporte une empreinte d'impression ou d'illustration, soit par le second plat, selon le cas. Tous les autres exemplaires originaux sont filmés en commençant par la première page qui comporte une empreinte d'impression ou d'illustration et en terminant par la dernière page qui comporte une telle empreinte.

Un des symboles suivants apparaîtra sur la dernière image de chaque microfiche, selon le cas: le symbole \rightarrow signifie "A SUIVRE", le symbole ∇ signifie "FIN".

Les cartes, planches, tableaux, etc., peuvent être filmés à des taux de réduction différents. Lorsque le document est trop grand pour être reproduit en un seul cliché, il est filmé à partir de l'angle supérieur gauche, de gauche à droite, et de haut en bas, en prenant le nombre d'images nécessaire. Les diagrammes suivants illustrent la méthode.

ails
du
adifier
une
nage

rrata
to

pelure,
n à

32X

NWp
971.947
V674pr

For the Coolest Lager on Draught the

OMINECA BAR

is the Best. ~~—————~~

BEST BRANDS OF WINES AND CIGARS KEPT IN STOCK.

130 GOVERNMENT STREET

➔ PROGRAM ➔

of Matches arranged for the Tournament of the

Victoria Lawn Tennis Club

To be held on

MONDAY and TUESDAY,

September 18th and 19th., at the Club's Courts,
Belcher Street, Victoria, B. C.

The Bank Exchange

RESTAURANT and DINING ROOMS,

Cor. Yates and Langley Sts.



Foreign delicacies, choice and rare wines—our own importation. Banquets, dinners and theatre party suppers a specialty. Merchants' lunch from 11:30 a. m. to 2 p. m., 25c. Table d'Hôte dinner from 5:30 to 8:30 p. m., 50c. and 75c.

OPEN DAY AND NIGHT.

Wellington and Comox
Household Coal

HALL, GOEPEL & COMPANY,

TEL. 83. 100 GOVERNMENT ST.

Ride a Racycle or Vim,

CLAYTON & COSTIN,

Bicycle Builders,

58 Johnson St.

- - USE - -

Mellor's Pure Mixed Paint,

\$1.50 per Gallon.

J. W. MELLOR, 76-78 FORT ST.

A. Gregg,

- Tailor -

62 Yates St.

Frank Campbell,

ESTABLISHED
1861.

TOBACCONIST.

New York, Coast and Local Papers for Sale. Agent for Seattle
P. I. Premium Tickets given to all purchasers of 25c. and
upwards. Reading and Card Room in rear of Cigar Store.

Old Postoffice, Government St.

PROGRAMME

MONDAY, Sept. 18th.—Morning.

10:30 a. m.—J. F. Foulkes vs. Davis

11:15 a. m.—Johnston and Pooley vs. Whitman and Wright.

12 noon.—A. T. Goward vs. Ward.

12:45 p. m.—A. D. Severs vs. Wright.

Victoria Cafe Co.,

51 FORT STREET.

**ALL KIND OF LIGHT REFRESHMENTS
AT POPULAR PRICES.**

Afternoon Tea a Specialty.

WHY do Rambler Bicycles
continue, year after
year, to be the most popular
wheels made?

BECAUSE the makers
have had
the very best of material and
used it economically and intelli-
gently.

WEILER BROS.,

AGENTS FOR BRITISH COLUMBIA.

Also complete line of Tires and Supplies.

This is the last of Tennis
for this season but the

Season for Golf is now at hand.

We are the pioneers in this line of goods, and carry
a full stock of everything.
Forgan's and Clarke's Golf Clubs, Heads, Silverton
Balls, Caddies, etc. Ball re-made and repairs
of all kinds done.

M. W. WAITT & Co., 60 GOVERNMENT ST.

GREENWOOD, SMITH & RANDOLPH,

PRINTERS AND BOOKBINDERS,

Cor. Government and Yates Sts., — VICTORIA, B. C.

ESTABLISHED 1858.

M. R. SMITH & CO.,

— MANUFACTURERS OF —

BISCUITS AND CONFECTIONERY,

VICTORIA AND VANCOUVER, B. C.



WHY NOT?

USE ELECTRIC LIGHT

When it Costs so Little now.

Everything Electrical at

HINTON'S,

62 Government Street.

ESTIMATES CHEERFULLY GIVEN.

PROGRAMME—Continued.

MONDAY—Afternoon.

- 2 p. m.—Malcom and Talbot (Vancouver) vs. Davis and Ward.
- 3 p. m.—Powell vs. Wright.
- 4 p. m.—Whitman vs. Davis.
- 5 p. m.—Foulkes vs. Ward.

TUESDAY, Sept. 19th.—Morning.

- 10:30 a. m.—Talbot vs. Wright.
- 11:15 a. m.—A. T. Goward vs. Whitman.
- 12 noon.—Severs and Powell vs. Davis and Ward.
- 12:45 p. m.—Johnston vs. Wright.

Ring up Phone 28
When in need of

FANCY AND STAPLE
GROCERIES,

WINES AND SPIRITS.

Finest Selection always on Hand.

E.J. SAUNDERS & Co.,

Johnson Street.

We Want Your Trade.

You ought to have our goods, as they consist of all the Latest Shades and Novelties for Fall and Winter Wear.

CREIGHTON & Co., The Tailors,

18 Broad Street.

E. F. GEIGER,

SANITARY PLUMBING, GAS AND HOT WATER FITTING.

All kinds of Jobbing and Ship Work a Specialty.
Estimates given on application. Orders promptly executed.

Corner Pandora and Douglas Sts., Victoria, B. C.

P. O. Box 122. Telephone 226.

For Your Customs Blanks go to

GREENWOOD, SMITH & RANDOLPH,

Corner Government and Yates Streets.

THE BROWN JUG,

Caters for the Best. The Finest Brands of Wines,
Liquors and Cigars.

COR. GOVERNMENT AND FORT STS.

J. FULLERTON,

Agent for Slater Shoes,

103 GOVERNMENT ST.

PROGRAMME—Continued.

TUESDAY—Afternoon.

2:15 p. m.—Foulkes and Goward vs Ward and Davis.

3:15 p. m.—Whitman and Wright vs. Malcolm and Talbot.

4 p. m.—Whitman vs. Foulkes.

5 p. m.—Ward vs. Davis.

A. & W. WILSON,

11 and 13 Broad Street,

Gasfitters,

Plumbers,

Stove

Dealers.

Telephone 126.



Gas Fixtures,

Hardware,

Air Tight

Heaters.

P. O. Box 37.

RAIN COATS

Best selection in the city at

The Fit-Reform Wardrobe,

73 Government St.

Victoria Lawn Tennis Club

OFFICERS.

PRESIDENT	-	-	-	-	-	Hon. C. E. Pooley
VICE-PRESIDENT	-	-	-	-	-	Rev. Canon Beanlands
HON. SECRETARY	-	-	-	-	-	R. H. Pooley
HON. TREASURER	-	-	-	-	-	G. C. Johnston

COMMITTEE.

G. H. BARNARD.	G. V. CUPPAGE.	A. T. GOWARD
P. S. LAMPMAN.	D. M. ROGERS	



"A thing of beauty is a joy forever."

Make your rooms beautiful by touching up the dark spots with *The Sherwin-Williams Co's*

FAMILY PAINT.

It is made for limited surfaces.

and is especially prepared for home use. Any Child can use it.
SOLD BY

Peter McQuade and Son, - - - 78 Wharf St.

