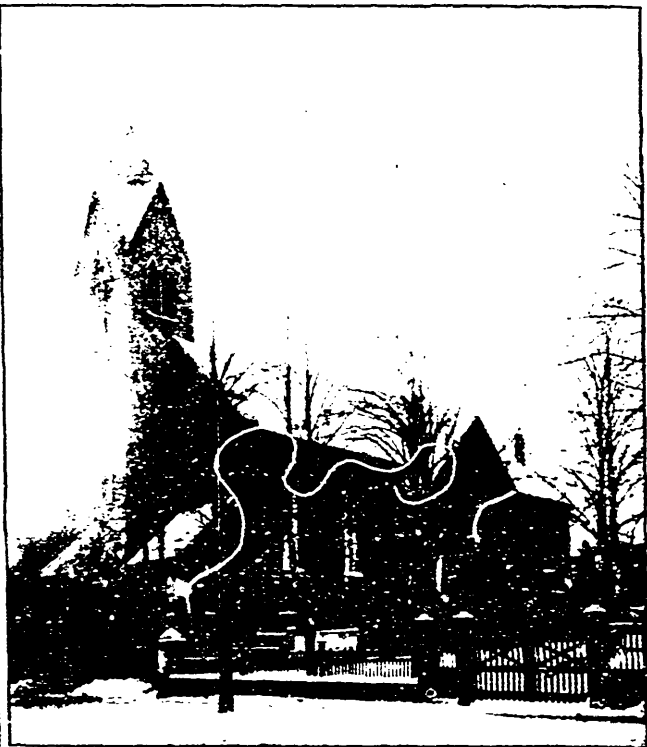


KEEP FOR REFERENCE AT HOME

Our Calendar.

MAY 14, 1897.

No. 20



THE NORTH BAPTIST CHURCH

GOTTINGEN STREET, HALIFAX, N. S.

REV. Z. L. FASH, M. A., Pastor,

RESIDENCE, 31 COMPTON AVE.

THE PEOPLE'S CHURCH HOME

Welcome to all our Services. Come Again.

For the Week Beginning May 14, 189

Daily Bible Readings.

MON.—Eze. 48; TUES.—Dan. 1; WED.—Dan. 2: 1-23; THURS.—Dan. 2:
FRI.—Dan. 3: 1-18; SAT.—Dan. 3: 19-30; SUN.—Jn. 18: 15-27.

Sunday Services.

10.30 A. M.—Morning Prayer Meeting. Every Sunday Morning.
11 A. M.—Public Worship with Sermon, by the Rev. W. E. Bates.
Hymns: 12, 199, 366. CONVENTION OFFERING.

2.45 P. M.—Sunday School. Lesson, "Christ betrayed and arrested."
Jn. 18: 1-14. The Pastor teaches the Young Men's Class.
All men invited.

2.45 P. M.—Sunday School at Bloomfield St. Mission.

4 P. M.—Junior Union.

7 P. M.—Prayer and Praise Service at Bloomfield St. Mission.

7 P. M.—Public Worship with Sermon by the Pastor. "THE WORD OF THE CROSS."

Hymns: 347, 317, 190.

After Meeting at close of the Preaching Service.

BAPTISM to-night at the beginning of Service.

Convention Fund Offering to-day.

SPECIAL COLLECTION for Organ Fund next Sunday.

PASTORAL CALLS.—TUES., V. G. Hospital, Young Ave.; WED.,
vey, Kent, Green, Spring Garden Road; THURS., Agricola Ext.,
Hammond Road, Veith.

Meetings for the Week.

MONDAY, 7.45 P. M.—Normal Class at 34 Compton Avenue.

TUESDAY, 8 P. M.—Review of 30 Examination questions C. M. at
Pastor's residence.

TUESDAY, 7.30 P. M.—Sewing Circle at the residence of Mrs.
McDonald, 16 Maynard Street.

WEDNESDAY, 7.30 P. M.—Pastor will meet in Vestry any desiring religious
conversation.

WEDNESDAY, 8 P. M.—Evangelistic Prayer Service. "Behold, I come
speak." Ex. 4: 10.

THURSDAY, 8 P. M.—Evangelistic Service at Bloomfield St. Mission.

FRIDAY, 8 P. M.—B. Y. P. U. Devotional Service. "The Gift of
Power." Acts 1: 1-18.

Strangers and Welcome feel at Home with us.

Notes.

Convention Fund Report. The amount received Aug. 1, '98 to Aug. 30, '99, was \$145.24. This is \$35.04 ahead of last year to date. A balance of \$204.76 remains to be collected by July 31. The time is short.

Organ Fund Collection. By vote of the church, there will be a SPECIAL COLLECTION for the Organ Fund next Sunday, May 21. Envelopes will be distributed, and it is earnestly hoped that there will be a generous general response.

A report at the last business meeting brought out some exceedingly interesting facts in reference to our membership and the number who contribute by envelope. At present we have a resident membership of 369. This consists of 43 young men, unmarried, from 15 to 30 years of age; 43 young women over 15 years, 80; men over 30 years, 78; women over 20 years, 152; boys under 15 years, 4; girls under 15 years, 12—Total, 369. Of this there are married men, 74; married women, 96; widows, 21; 26 families have 133 members. It is well to learn that out of our entire resident membership and congregation, we have only 100 contributors by envelope to the current expenses of the church, which by covenant obligation every member promises to sustain on entering the church.

There is great chance for improvement here, and we believe it will be made.

The contributors may be classed as follows:—Young men, unmarried, 14; young women, unmarried, 14; women, married, 12; widows, 7; men, married, 47; men not members, 4; women not members, 1. There is much to be thought for reflection here. "Every member, young and old, is expected to contribute regularly." It is a religious duty. He who neglects this part of his obligation is not keeping his soul open towards God. He is living in disobedience, and missing the highest joys of the Christian life.

Here is a scheme which the report put forward. The estimates are minimum. Many are able and ought to give very much more. 43 young men, each giving 10c. per Sunday=\$223.60; 80 young women @ 5 cts. per Sunday=\$208.00; 78 men @ 20c. per Sunday=\$811.20; 152 women @ 10c. per Sunday=\$790.40; 16 boys and girls @ 2c. per Sunday, \$16.64.—Total of members=\$2019.84. Contributions from members of congregation, \$200.—Grand Total \$2309.84, or an average of nearly \$15 a Sunday. See how easily it can be done when each does his part. Let us have the contributions by envelope more general. We are making improvement financially as well as spiritually. The average collection for the last five Sundays has been \$41.50. It ought to be much more than that every Sunday. Are you going to help to make it so?

The Pastor will be glad to speak with you at the close of each service. Kindly inform him immediately concerning the sick, the aged, the poor, the distressed, and where a visit will be helpful. All are urged to use the information cards in pews.

Get your "Letter" of once and help save the Lost.

B. Y. P. U.—President, N. B. SMITH.
Sunday School—Superintendent, A. C. LAYTON.
W. M. A. S.—President, MRS. JAS. MCPHERSON.
Bloomfield St. Mission—Committee, DEA. J. BENTLEY, J. HAVERST



PASTOR, Z. L. FASH.

Deacons.—JAS. MCPHERSON, 270 Robie St.
W. W. PICKINGS, 21 Vernon St.
J. C. DUMARESO, 17 Cogswell St.
JAS. ROSS, 6 Moran St.
JOHN BENTLEY, 129 North St.
W. T. HARRIS, 133 Agricola St.
Assistant Clerk, A. C. LAYTON, 3 Moran St.
Clerk, GEO. A. MACDONALD,
13 Maynard Street.
Treas. W. T. HARRIS.