

No. 1

JUNE

1892

CAMERON'S

DIRECTORY

—AND—

Railway and Steamship

GUIDE

TO TORONTO

PUBLISHED MONTHLY FOR GRATUITOUS
DISTRIBUTION

PUBLISHER'S NOTE

This, the initial issue of this work, as must be expected, is in many respects necessarily deficient and incomplete. Every effort will be put forth with each successive issue to remedy existing faults, and to insert such further and necessary information as will commend this Guide to both citizens and strangers alike. The circulation will be increased from month to month as the demand suggests. Copies can be obtained at the leading hotels and on the various lake steamers, etc.

TABLE OF CONTENTS

	PAGE
Arrival and departure of trains, Union Station . . .	3, 13
Asylums, etc.	46
Band concerts.	42
Board of Trade and officials	33, 34
Cab tariffs, etc	21
C. P. R. { Suburban service, Union Station,	3
{ Regular service, " "	7, 9, 11
Civic officials	27
Consuls in Toronto	43
Central churches	45
Cemeteries	46
Clubs.	23
Express companies.	23
Express tariff.	47
Fire alarm signal boxes	24, 25
Freight service	47
Fire department.	27
G. T. R. { Suburban service, Union Station.	4, 5
{ Regular service, " "	6, 8, 10, 12 13
Hospitals, etc.	46
Harbour Commissioners	27
Hotels, principal.	22
Island ferry.	2
Libraries	44
Law courts	37
Law terms	37
License Commissioners	27
Military guide	38
Municipal Representatives	27
Post office guide.	29, 30, 31, 32
Public School Board.	39
Police department.	27
Provincial Executive.	28
Parks.	41
Places of interest	26
Steamers, lake.	14
Steamers, ocean mail.	15, 16, 17, 18
Street railway guide.	19, 20
Senior lacrosse league schedule.	48
Telegraph Co's.	23
Telephone Co's.	23
Toronto M.P's.	28
" M.P.P.'s.	23
" Senators.	28
Underwriters, Board of	44
Weights and measures.	35, 36

ISLAND FERRY.

Yonge Street and Hanlan's Point—Leave Yonge Street, Forenoon, every 40 minutes; afternoon, every 25 minutes; evening, 20 minute service. Last boat leaves Yonge Street at 10.10 p.m., and Hanlan's Point at 10.30 p.m.

Brock Street and Hanlan's Point—Leave Brock Street at 10 a.m., and every 40 minutes during forenoon; afternoon, 35 minute service, and evening, 20 minute service. Last Boat leaves Brock Street at 10 p.m., and Hanlan's Point at 10.30 p.m.

On Sundays last Boat leaves for the Point at 9.30, and returns at 10.

Yonge Street and Island Park—Leave Yonge Street, forenoon, each 40 minutes; afternoon and evening, 25 minute service. Last Boat leaves for Island Park at 10 p.m., and returns at 10.30 p.m.

Steamers also run from Church and Brock Streets to Island Park when weather permits.

CANADIAN PACIFIC RAILWAY SUBURBAN SERVICE

OUTWARD (Read Down)

INWARD (Read Up)

STATIONS

Daily, Except Sunday

Daily

Daily, Except Sun.

Daily

Daily

Daily, Except Sunday

A.M.	A.M.	A.M.	P.M.	P.M.	P.M.	P.M.	P.M.	A.M.	A.M.	A.M.	N.N.	P.M.	P.M.	P.M.	P.M.								
6 50	7 10	7 35	8 45	11 10	3 00	4 55	5 15	5 25	6 00	9 00	Toronto	7 55	8 15	10 10	10 30	11 00	12 00	8 35	8 55	9 05	9 40		
7 00	7 20	7 45	8 55	11 20	3 10	5 05	5 25	5 35	6 10	9 10	...Parkdale	7 45	8 05	10 00	10 20	10 50	11 50	8 25	8 45	8 55	9 30		
7 06	7 26	7 50	11 26	3 16	5 11	5 31	5 40	6 16Bloor St.	7 59	9 54	10 14	10 44	11 44	8 19	8 49	9 24		
7 10	7 40	8 00	9 10	11 30	3 20	5 15	5 35	5 45	6 20	9 25	..Toronto Jc.	7 35	7 55	9 50	10 19	10 40	11 40	8 15	8 35	8 45	9 20		
.....	5 42Duff, rin St.	9 43	
.....	5 48Bathurst St.	9 37
.....	5 55	9 45	North Toronto	7 10	9 30	8 10

Toronto Ticket Office, 1 King Street East, Corner Yonge, and 24 York Street,
 Where Lowest Rates, Maps, Time Cards, etc., can be had on application.

D. McNICOLL,
General Passenger Agent, Montreal.

W. R. CALLAWAY,
District Passenger Agent, Toronto.

GRAND TRUNK, Suburban Train Service, Daily, Except Sunday.

TORONTO, YORK AND WESTON.

Ps.		Ps.		Ps.		Ps.		Ps.		Ps.		Ps.		Ps.		Ps.	
P.M.	P.M.	P.M.	P.M.	A.M.	A.M.	A.M.	A.M.	A.M.	A.M.	P.M.	P.M.	P.M.	P.M.	P.M.	P.M.	P.M.	P.M.
11 35	6 44	4 23	2 36	10 33	8 40	A	11 35	10 33	8 40	12 20	2 50	4 25	6 20	8 42	12 20	2 50	4 25
11 23	6 37	4 16	2 29	10 26	8 34	C	11 23	10 26	8 34	12 25	2 55	4 30	6 25	8 45	12 25	2 55	4 30
11 18	6 29	4 08	2 21	10 18	8 26	A	11 18	10 18	8 26	12 32	3 02	4 37	6 28	8 48	12 32	3 02	4 37
11 15	6 26	4 05	2 18	10 15	8 23	H	11 15	10 15	8 23	12 35	3 07	4 40	6 32	8 52	12 35	3 07	4 40
11 12	6 23	4 02	2 15	10 12	8 20	H	11 12	10 12	8 20	12 38	3 10	4 43	6 35	8 55	12 38	3 10	4 43
11 05	6 16	3 55	2 08	10 05	8 10	A.M.	11 05	10 05	8 10	12 45	3 17	4 50	6 35	8 55	12 45	3 17	4 50
11 03	6 14	3 53	2 06	10 03	8 08	A.M.	11 03	10 03	8 08	12 47	3 19	4 52	6 35	8 55	12 47	3 19	4 52
11 00	6 11	3 50	2 03	10 00	8 05	A.M.	11 00	10 00	8 05	12 50	3 21	5 00	6 35	8 55	12 50	3 21	5 00
Wed'n'sd's and Saturdays only	6 07	3 45	1 59	9 55	7 56	A.M.	6 07	9 55	7 56	12 54	3 25	5 04	6 15	8 19	12 54	3 25	5 04
	6 05	3 43	1 56	9 53	7 54	A.M.	6 05	9 53	7 54	12 56	3 27	5 06	6 17	8 21	12 56	3 27	5 06
	6 01	3 40	1 53	9 50	7 50	A.M.	6 01	9 50	7 50	1 00	3 31	5 10	6 20	8 25	1 00	3 31	5 10
	5 54	3 40	1 46	9 43	7 43	A.M.	5 54	9 43	7 43	1 07	3 31	5 10	6 20	8 25	1 07	3 31	5 10
	5 51	3 40	1 43	9 40	7 40	A.M.	5 51	9 40	7 40	1 10	3 31	5 10	6 20	8 25	1 10	3 31	5 10
	5 49	3 40	1 41	9 38	7 38	A.M.	5 49	9 38	7 38	1 12	3 31	5 10	6 20	8 25	1 12	3 31	5 10
	5 48	3 40	1 40	9 37	7 37	A.M.	5 48	9 37	7 37	1 13	3 31	5 10	6 20	8 25	1 13	3 31	5 10
	5 44	3 40	1 36	9 33	7 33	A.M.	5 44	9 33	7 33	1 17	3 31	5 10	6 20	8 25	1 17	3 31	5 10
	5 40	3 40	1 32	9 30	7 30	A.M.	5 40	9 30	7 30	1 21	3 31	5 10	6 20	8 25	1 21	3 31	5 10
	Dep.	Weston	Arr.				Dep.	Weston	Arr.								

Wed'n'sd's and Saturdays only.

Grand Trunk Railway—Suburban Time Table.

SOUTHERN DIVISION.

TO MIMICO.				STATIONS.				TO TORONTO.			
P.M.	P.M.	P.M.	A.M.					A.M.	A.M.	P.M.	P.M.
6 35	5 20	1 45	10 40	Dep	Toronto, City Hall	Arr	8 40	11 55	2 55	7 55	7 55
6 37	5 22	1 47	10 42	..	Union Station	8 35	11 50	2 50	6 25	7 52
6 40	5 25	1 50	10 45	Brock Street	8 32	11 47	2 47	6 22	7 50
6 45	5 30	1 55	10 50	Queen's Wharf	8 30	11 45	2 45	6 20	7 50
6 50	5 35	2 00	10 55	South Parkdale	8 25	11 40	2 40	6 15	7 45
6 52	5 38	2 03	10 58	High Park	8 20	11 35	2 35	6 10	7 40
6 55	5 40	2 05	11 00	Swansea	8 17	11 32	2 32	6 05	7 35
6 57	5 42	2 07	11 02	Humber	8 15	11 30	2 30	6 00	7 30
7 00	5 45	2 10	11 05	Humber Grove	8 12	11 27	2 27	5 57	7 27
				Arr	Mimico Station	8 10	11 25	2 25	5 55	7 25

For Tickets, Rates, Maps and reliable information, apply at Company's Ticket Offices, corner King and Yonge Sts., and 20 York St. and South Platform, Union Depot.

P. J. SLATTER, City Passenger Agent.

Grand Trunk Railway—West

Arrive From

Depart For

<p>8.10 A.M. Daily, except Sunday.</p>	<p>Brampton, Guelph, Galt, Elora, Fergus, London, Goderich, Sarnia, Detroit. Connecting at Guelph for all points on W. G. and B., and G. B. & L. E. Divisions, and at Port Huron for all points in Michigan. Pullman Buffet Parlor Car to Detroit.</p>	<p>12.30 P.M. Daily, except Sunday.</p>
<p>Pacific Express, 1.00 P.M. Daily, except Sunday.</p>	<p>Brampton, Guelph, London, Sarnia, Detroit, Chicago, and all points west, north-west and south-west. Through Pullman to Chicago.</p>	<p>Pacific Express, 7.35 A.M. Daily.</p>
<p>4.25 P.M. Daily, except Sunday.</p>	<p>Brampton, Guelph, London, Goderich, Palmerston, Wingham, Kincardine, Warton, Southampton, and intermediate stations. Forney's reclining seated coach attached; no extra charge.</p>	<p>7.35 P.M. Daily, except Sunday.</p>
<p>Passenger, 6.15 P.M. Daily, except Sunday.</p>	<p>Brampton, Guelph, Berlin, Waterloo, Elmira, and intermediate stations.</p>	<p>Passenger, 10.45 A.M. Daily except Sunday.</p>
<p>Midnight Exp. 11.35 P.M. Daily, except Sunday.</p>	<p>Detroit, Chicago, and all points west, north-west and south-west, with Through Pullman Sleepers to Detroit and Chicago.</p>	<p>Midnight Exp. 7.35 P.M. Daily, except Sunday.</p>

Canadian Pacific Railway—WEST.

Depart For

Arrive From

Chicago Flyer, 7.10 A.M. daily except Sunday.	Cooksville, Streetsville, Milton, Guelph, Woodstock, London, Chatham, Ingersoll, St. Thomas, Detroit, Chicago. Elegant Reclining-Seated Coaches and Palace Sleeper and Parlor Car Toronto to Chicago, without change. Palace Sleeping Car Detroit to St. Louis via Wabash Railway. Buffet and Dining Cars.	Daily 9.40 P.M. except Sunday.
Steamboat Express. 11.10 A.M. During navigation only.	Orangeville, Owen Sound, Sault Ste. Marie, PORT ARTHUR, WINNIPEG, DULUTH, ST. PAUL, all Points on the Pacific Coast CHINA AND JAPAN This Train has Parlor Car and Day Coaches between Toronto and Owen Sound. Runs Mondays, Wednesdays and Saturdays.	Monday, Tuesday 1.00 P.M. and Thursday.
Chicago "Daisy," 3.00 P.M. Daily.	CHATHAM, GALT, WOODSTOCK, DETROIT, TOLEDO, CHICAGO St. Louis, Kansas City, St. Paul, Denver and San Francisco Through Buffet Coaches. Palace Sleeping and Dining Cars to Chicago.	8.15 A.M. DAILY.
Local Express, 6.00 P.M. daily ex. Sunday.	Cooksville, Streetsville, Milton, Guelph, Galt Ayr, Drumbo, Woodstock, Ingersoll, St. Thomas and London Elegant Reclining-Seated Coaches FREE between Toronto and London.	Daily 12.00 N'N. except Sunday.
Pacific Express, 11.15 P.M. daily except Sunday.	North Bay, Sudbury, Porth Arthur, Winnipeg, Brandon, Regina, Prince Albert, Calgary, Edmonton, the Rockies, Vancouver, Victoria, and all points on the Pacific Slope. CHINA AND JAPAN Through Day Coaches, Colonist Sleeper, Magnificent Sleeping Car, Recherche Dining Car North Bay to Vancouver. Via North Bay.	Daily 4.45 A.M. except Sunday.

Grand Trunk Railway—East

Arrive From

<p>7.55 A.M. Daily, except Sunday.</p>	<p>Port Hope, Cobourg, Belleville, Kingston, Brockville, Cornwall, Montreal, Portland, Boston, and all points East. Pullman Buffet Parlor Car to Montreal and Through Pullman to Boston.</p>	<p>11.15 A.M. Daily, except Sunday.</p>
<p>Mixed, 12.45 P.M. Daily, except Sunday.</p>	<p>Kingston and intermediate stations.</p>	<p>Mixed, 5.45 P.M. Daily, except Sunday.</p>
<p>5.30 P.M. Daily, except Sunday.</p>	<p>Peterboro' and intermediate stations (via Port Hope).</p>	<p>10.00 A.M. Daily, except Sunday.</p>
<p>8.30 P.M. Daily.</p>	<p>Ottawa, Montreal, Quebec, Portland, Boston, Halifax, and principal intermediate stations. Through Sleeper to Ottawa, and Pullman Buffet Sleepers to Montreal.</p>	<p>7.15 A.M. Daily.</p>

Canadian Pacific Railway—East.

Arrive From

Depart For

Eastern Express,
8.45 A.M.
daily, except
Sunday.

PETERBORO', NAPANEE, KINGSTON, CARLETON JC.,
Ottawa, Pembroke, Montreal and all points in the Upper Ottawa Valley,
QUEBEC, SHERBROOKE AND ST. JOHN AND HALIFAX, VIA
"Short Line," Boston, Portland and New England.
Elegant Through Buffet Coaches, Palace and Sleeping Cars between
Toronto and Montreal. Palace Sleeper between Montreal and
Quebec, Montreal and Portland and Boston and Montreal
and St. John and Halifax via New Short Line.

8.55 P.M.
Daily, except
Sunday.

Accommodation,
5.15 P.M.
daily, except
Sunday.

Agincourt, Locust Hill, Claremont, Myrtle, Burketon,
CAVANVILLE, PETERBORO' NORWOOD, AND HAVELOCK
—This Train has Elegant Through Day Coaches—

10.10 A.M.
Daily, except
Sunday.

Montreal Fast
9.00 P.M.
Express, daily.

PETERBORO', NAPANEE, KINGSTON, OTTAWA,
MONTREAL, QUEBEC, SHERBROOKE, OLD ORCHARD,
Portland, Boston and New England
Through Buffet Coaches, Palace and Parlor Cars between Toronto and
Ottawa and Montreal. Palace Sleeping and Parlor Cars between
Montreal and Quebec, Boston and Portland. PALACE SLEEPERS
Toronto to Kingston, Toronto to Ottawa, Toronto to Montreal, *Toronto
to Portland, *Toronto to Old Orchard.
*Tuesdays and Fridays only.

7.55 A.M.
Daily.

Grand Trunk Railway—North

Northern and North-Western Division

Arrive From

Depart For

8.05 A.M.
Daily, except
Sunday.

From City Hall, for Collingwood, Meaford, Penetang, North Bay, and intermediate stations. Connecting at North Bay for Sudbury and Sault Ste. Marie. Parlor Car to Gravenhurst.

8.00 P.M.
Daily, except
Sunday.

12.00 Noon.
Daily, except
Sunday.

From City Hall, for Barrie, Orillia, Gravenhurst, Collingwood, Meaford and intermediate stations.

1 50 P.M.
Daily, except
Sunday.

5.10 P.M.
Daily, except
Sunday.

From City Hall, for Barrie, Orillia, Collingwood, Penetang and intermediate stations. Connecting at Allandale with Express from Hamilton.

10 05 A.M.
Daily, except
Sunday.

Pacific Express,

11.15 P.M.
Daily, except
Sunday.

From Union Depot, for Barrie, Orillia, Gravenhurst, North Bay, Sudbury, Port Arthur, Winnipeg, Calgary, the Rockies, Vancouver, and all points on the Pacific Coast. Through Sleeper to North Bay.

Pacific Express,
4.35 A.M.
Daily, except
Sunday.

Canadian Pacific Railway—North.

Arrive From

<p>Depart For Accommodation, 6.50 A.M. daily, except Sunday.</p>	<p>LAMBTON, COOKSVILLE, STREETSVILLE, BRAMPTON, CHELTENHAM, ERIN, HILLSBURG, FERGUS, ELORA, ORANGEVILLE. — This Train has Elegant Through Day Coaches. —</p>	<p>9.05 P.M. Daily, except Sunday.</p>
<p>Mail, 7.35 A.M. daily, except Sunday.</p>	<p>Weston, Woodbridge, Cardwell, Tottenham, Beeton, Alliston, GLENCAIRN, AVENING, CREEMORE, ORANGEVILLE, Shelburne, Dundalk, Flesherton, Markdale, Owen Sound, Arthur, Mount Forest, Harriston, Wingham and Teeswater. THIS TRAIN HAS ELEGANT THROUGH DAY COACHES.</p>	<p>10.30 A.M. Daily, except Sunday.</p>
<p>4.55 P.M.</p>	<p>Lambton, Cooksville, Streetsville, BRAMPTON, CHELTENHAM, ERIN, HILLSBURG, ELORA, FERGUS, ORANGEVILLE. This Train has Elegant Day Coaches.</p>	<p>11.00 A.M. Daily, except Sunday.</p>
<p>North Express, 5.25 P.M. daily, except Sunday.</p>	<p>Weston, Woodbridge, Cardwell, Tottenham, Beeton, Alliston, GLENCAIRN, AVENING, CREEMORE, ORANGEVILLE, Shelburne, Dundalk, Flesherton, Markdale, Owen Sound, Arthur, Mount Forest, Harriston, Wingham and Teeswater — This Train has Elegant Through Day Coaches. —</p>	<p>8.35 P.M. Sunday.</p>

Grand Trunk Railway—East

MIDLAND DIVISION

Depart For

Arrive From

Mixed,
7.05 A.M.
Daily, except
Sunday.

Mixed,
6.20 P.M.
Daily, except
Sunday.

Lindsay and intermediate stations.

Mail,
7.45 A.M.
Daily, except
Sunday.

Mail,
9.20 P.M.
Daily, except
Sunday.

Lindsay, Peterboro', Campbellford, Belleville, Orillia, Midland,
and all intermediate stations.

Mixed,
1.50 P.M.
Daily, except
Sunday.

Mixed,
10.20 A.M.
Daily, except
Sunday.

Stouffville and intermediate stations.

Express,
4.35 P.M.
Daily, except
Sunday.

Express,
12.15 P.M.
Daily, except
Sunday.

Sutton, Coboconk, Lindsay, Peterboro', Orillia, Midland and
all intermediate points. Parlor Car.

Grand Trunk Railway—West

SOUTHERN DIVISION

Depart For

Arrive From

St. Louis Express
7.30 A.M.
 Daily, except Sunday

Niagara Falls, Buffalo, Rochester, Brantford, Woodstock, Ingersoll, London, St. Thomas, Detroit, Bay City, Chicago, St. Louis, and all points west, north-west and south-west. Through Sleeper and Coach, Hamilton to Chicago without change.

St. Louis Express
8.10 P.M.
 Daily, except Sunday

9.15 A.M.
12.50 P.M.
 Daily.

Daily, except Sunday, for Hamilton.

Pacific Express,
2.50 P.M.
 Daily, except Sunday

Niagara Falls, Buffalo, New York, Boston, Philadelphia, Baltimore and Washington. Through Sleepers, Hamilton to New York and Boston, connecting at Hamilton on Sundays with Pacific Express to the west. Brantford, Galt, Woodstock, Ingersoll, London, St. Thomas, Chatham, Detroit, Grand Rapids, St. Louis, Chicago and the west. Dining car Hamilton to Windsor. Through Coaches and Sleeping cars, Hamilton to Chicago.

Pacific Express,
5.25 P.M.
 Daily, except Sunday

4.55 P.M.
 Daily, except Sunday.

Hamilton, Brantford, Galt, St. Thomas, Woodstock, London, St. Catharines, Niagara Falls, Buffalo, New York, Boston and Philadelphia. Through Sleeping Cars Toronto to New York. Dining car Hamilton to Suspension Bridge.

10.25 A.M.
 Daily, except Sunday

6.55 P.M.
 Daily, except Sunday

Hamilton, St. Catharines and Niagara Falls.

Chicago Express,
11.00 P.M.
 Daily, except Sunday

Hamilton, Buffalo, Woodstock, Ingersoll, London, Detroit, Chicago and all points west, connecting at Hamilton with Erie Limited to New York. Through Sleepers Hamilton to Bay City and Hamilton to Chicago.

12.15 P.M.
 Daily, except Sunday

Chicago Express,
7.40 A.M.
 Daily, except Sunday

Lake Steamers.

Richelieu and Ontario Navigation Co's Steamers, daily at 2 p.m., for Port Hope, Belleville, Kingston and Montreal, from Milloy's Wharf, foot of Yonge St.

Niagara River Line, Steamers Chicora and Cibola, for Niagara Falls, Buffalo, New York, Boston, etc., from Geddes' Wharf, foot of Yonge St., at 7 and 11 a.m., and 2 and 4.45 p.m., daily (except Sunday).

Niagara Falls Line, Steamer Empress of India, daily (except Sunday) at 8 a.m., and 3.40 p.m., from Geddes' Wharf, for St. Catharines, Niagara Falls, Buffalo, Rochester, New York.

Steamer Lakeside, daily (except Sunday) for Port Dalhousie and St. Catharines, leaving Milloy's Wharf at 3.40 p.m.

Steamer Carmona for Charlotte every Tuesday and Thursday at 9 p.m., and Saturdays at 10 p.m. from Geddes' Wharf.

Hamilton Steamboat Co's Steamer Macassa leaves Geddes' Wharf daily (except Sunday) at 11 a.m. and 5.30 p.m., for Hamilton.

Merchant's Line Steamer Ocean leaves Toronto every Saturday at 4.00 p.m., for Montreal, calling at Kingston, Brockville, Prescott and Cornwall.

Muskoka and Georgian Bay Navigation Co's Steamers leaving Muskoka Wharf daily (except Sunday) for all points on Muskoka and Rosseau Lakes and Georgian Bay.

Canadian Pacific Steamships. Manitoba, Alberta, and Athabasca, leave Owen Sound every Monday, Wednesday and Saturday, for Sault Ste. Marie and Fort William, connecting with through train for Winnipeg and all points west.

Northwest Transportation Co's Steamers in connection with the G. T. Railway, leave Sarnia on Tuesdays and Fridays at 10 p.m. for Sault Ste. Marie, Port Arthur and Duluth.

The North Shore Navigation Co., running from Collingwood and Owen Sound in connection with the G. T. and C. P. Railways, for Sault Ste. Marie and all points on the Georgian Bay and North Shore of Lake Huron. Steamers leave Collingwood on Mondays, Tuesdays, Thursdays and Fridays.

Great Northern Transit Co's Steamers leave Collingwood every Tuesday, Thursday and Saturday, and Owen Sound same day, in connection with the G. T. and C. P. Railways for Sault Ste. Marie and all points on the Georgian Bay and North Shore of Lake Huron.

Ocean Mail Steamers—Sailings for June and July.

LINE.	STEAMER.	FROM.	TO.	SAILS.	
				June	July
Anchor	City of Rome....			2
	Ethiopia			4	9
	Furnessia			11	16
	Aanchoria	New York.	Glasgow	18	23
Cunard	Circassia			25	30
	Bothnia		Liverpool....	1&29	27
	Umbria			4	2&30
	Servia			11	9
Guion.....	Etruria.....			18	16
	Gallia			15	13
	Aurania			25	23
	Nevada			4	16
	Arigona			11	9
	Wyoming.....			18	30
Inman.....	Wisconsin.....			2
	Alaska			25	23
	City of Paris....			1&29
	" Berlin....			8	6
White Star	" New York			15	13
	" Chicago			22	20
	" Chester			29
	Germanic.....			1&29
N. G. Lloyd	Teutonic.....			8	6
	Brittanic.....			15	13
	Majestic.....			22	20
	Adriatic	27
	Kaiser Wilhelm II		Southampton	6
	Ems			4	2&30
	Lahu.....			7	5
	Saale.....			11	9
	Spree.....			14	12
	Elbe.....			15	13
Dominion..	Aller.....			18	16
	Trave.....			21	19
	Eider			25	23
	Havel.....			28	26
	Sarnia	Montreal ..	Liverpool....	1	6
	Labrador			4	9
	Oregon.....			15
	Toronto.....			22
Beaver	Dominion.....		Bristol	29
	Lake Nepigon....			1	6
	" Huron.....			8	13
	" Superior....			15	20
Allan State	" Winnipeg....			22	27
	" Ontario.....			29
	S. of Nebraska	New York..	Glasgow....	2	14
	" California ..			16	28
	" Nevada			30

OCEAN MAIL STEAMERS, SAILINGS—*Continued.*

LINE.	STEAMER.	FROM.	To	SAILS.
	Mongolian	Montreal ..	Liverpool ...	<i>July</i> 4 9
	Sardinian	11 16
	Nomidian	18 23
	Parisian	25 30
	Circassian 2
Can. Pacific	Emp. of India . .	Vancouver.	Hong Kong..	5
	“ Japan	6
	“ China 17

Ocean Mail Steamers.

White Star Line, New York to Liverpool, calling at Queenstown. Saloon Fares, by Majestic and Teutonic, \$60, \$80, \$100, \$125, \$150, \$175; return \$110, \$144, \$130, \$225, \$270 and \$315; by other steamers \$50, \$60, \$80 and \$100; return \$100, \$110, \$144 and \$180. Intermediate, \$40 and \$45. Steerage, \$20.

Steamers sail from foot of west 10th st., North River.

North German Lloyd, New York to Bremen, calling at Southampton. First Cabin, to London, Havre or Bremen, \$100, \$125, \$132.50, \$150 and \$175. Second Cabin, \$50 and \$60. Steerage, to or from Southampton, London or Bremen, \$26.

Guion Line, New York to Liverpool calling at Queenstown. Saloon Fares, per Alaska or Arizona, \$50, \$80, and \$100; Return Tickets, \$120, \$144 and \$180. Saloon fares by other steamers, \$50, \$60 and \$80; Return Tickets, \$100, \$120 and \$144. Intermediate, \$30 and \$35; Return Tickets, \$60 and \$70. Steerage, Outward, \$18 (\$20 by the Alaska and Arizona); Prepaid to New York, \$18; (Alaska and Arizona, \$20).

Steamers sail from Pier 38, North River, foot of King St.

Inman Line, New York to Liverpool (calling at Queens-town. Saloon Fares, by City of Paris and City of New York, \$75, \$90, \$100, \$125; return, \$135, \$162, \$180, \$202.50 and \$225; by other steamers, \$50, \$60, \$75 and \$80; return \$100, \$110, \$135 and \$144. Intermediate, \$35 and \$40; return \$70 and \$75. Steerage \$20.

Steamers sail from Pier 43, North River, New York.

Return passage orders by this Line are good for passage by Red Star Line from Antwerp, if desired.

Anchor Line, GLASGOW SERVICE.—New York to Glasgow (calling at Moville). Saloon Fares, by City of Rome, \$50, \$60, \$80, \$100, return \$100, \$120, \$144, \$180; by other steamers, \$50, \$60, \$65. Return Tickets, \$100, \$110, \$120. Second Cabin, \$30, return, \$60. Steerage to Glasgow, \$20. Fares, Glasgow to New York, same as outward.

Cunard Line, New York or Boston to Liverpool (calling at Queenstown). Saloon Fares, \$50, \$80, \$100 and \$125. Return Tickets, \$120, \$144, \$180 and \$220. Fares from Liverpool to New York, 12, 15, 18 and 21 guineas and £26, according to accommodation. Intermediate, \$35. Steerage, \$20. Prepaid to New York, \$20.

Steamers sail from Pier 40, North River, foot of Clarkson St.

Allan Line.—Royal Mail Steamships. Montreal or Quebec to Liverpool and Londonderry. Fares: Cabin, by Parisian, Sardinian or Circassian, \$40 to \$80, return \$80 to \$150, by other steamers, \$40 to \$45, return \$80 to \$90. Intermediate, \$25, return \$55. Steerage \$20, return \$40. Extra cheap rates to and from all Scandinavian points.

Allan State Line. New York to Glasgow. Saloon Fares, \$33, \$40, \$45 and \$65, Return \$75, \$85 and \$110. Glasgow to New York, same as outward. Passengers are booked through, to or from Belfast and Dublin, at same fares. Intermediate, \$30. Steerage, \$20. Prepaid to New York, \$20.

Steamers sail from foot of Atlantic Street, Brooklyn.

OCEAN MAIL STEAMERS—Continued.

Dominion Line.—Royal Mail Steamships. From Montreal or Quebec to Liverpool. Fares: Cabin, by Vancouver and Labrador, \$40 to \$80; return \$80; to \$150; by other steamers, \$40 and \$45, return \$80 and \$90. Intermediate, \$25, return \$55. Steerage, \$20; return \$40.

Beaver Line. Montreal or Quebec to Liverpool. Cabin, \$40, return, \$80. Intermediate, \$25, return, \$55. Steerage, \$18.50.

Street Railway Guide.

Yonge Street—(*Red Light*.) Leaves Front and York Sts. 5.40, 6.00, 6.10, 6.20, a.m. and every 5 minutes until 7.20 p.m.; then every 10 minutes until 11.30 last car.

Leave North Toronto 6.00, 6.10, 6.20, a.m. and every five minutes until 7.50 p.m., then every ten minutes until 12.00 p.m., last car for York and Front Sts.

Woodbine to Dufferin St (*Red Light*.) Leave Dufferin at 5.54 a.m.; and every 6 minutes until 11.42 p.m., last car.

Leave Woodbine at 5.48 a.m., and every 6 minutes until 11.42 p.m., last car.

Church Street—(*Blue Light*.) Leaves York and Front Sts. 5.49 a.m., and every 7 minutes till 11.26 last car.

Leave Bloor St. 6.14 a.m., and every 7 minutes till 11.51 last car.

King Street - (*Red Light*.) Woodbine to Dufferin St. Leave Woodbine at 5.48 a.m., and about every 6 minutes until 11.42 p.m. last car.

Leaves Dufferin St. at 5.54 a.m. and about every 6 minutes until 11.42 p.m., last car.

Sherbourne Belt—(*Red Light*.) Sherbourne, Bloor, Spadina and King, leave cor. King and Sherbourne at 5.23 a.m. and every 7 minutes till 8.45 p.m., then every 10 minutes till 11.45 p.m. last ar.

High Park—(*White Light*.) Leave Front and George Sts. at 5.15 a.m., and every 4 minutes until 11.15 p.m., then 11.24, 11.33 p.m., last car.

Leave High Park at 6.00 a.m., and every 4 minutes until 12.00 p.m., then 12.09, 12.18 a.m., last car.

Queen St. and Brockton—(*Green Light*.) Leave Front and George Sts. at 5.12 a.m. and every 9 minutes until 10.54, 11.10, 11.30 p.m., last car for Lansdowne Ave.

Leaves Lansdowne Ave. at 5.57 a.m., and every 9 minutes until 11.39, 11.57, 12.15 p.m., last car.

Parliament to Davenport via Front—(*White Light*.) Leave Gerrard and River Sts. at 6.10 a.m., and every 10 minutes until 11.00 p.m., last through car.

Leave C.P.R. and Davenport going to River St., 6.10 a.m., and every 10 minutes until 11.00 p.m., last car.

Danforth Ave., Queen East, Yonge, Front, Queen, McCaul and College—(*White Light*.) Leave Danforth Ave. 6.12 a.m., and every 12 minutes to 11.42 p.m., last car.

Leave Dufferin 6.00 a.m., and every 12 minutes to 12.06 p.m., last car.

Lee Ave. to Dufferin St.—(*Yellow Light*.) Leave Lee Ave. 6.15 a.m., and every 24 minutes to 10.39 p.m. Leave Dufferin 7.24 a.m., and every 24 minutes to 11.48 p.m., last car.

Winchester to Davenport—(*Green and Red Light*.) Via Front, King and Bathurst. Leave Sumach St. 6.15 a.m., and every 10 minutes until 11.05 p.m., last car at 12.05.

Leave C.P.R. and Davenport at 6.15 a.m., then every 10 minutes until 11.05 p.m., last car.

Carlton and College Sts—(*White Light*.) Leave Sumach and Gerrard Sts. at 6.01 a.m., and every 5 minutes until 11.26 p.m., last car.

Leave Bathurst and College at 6.31 a.m., and every 5 minutes until 11.56 p.m., last car.

Dovercourt via McCaul—(*Green Light*.) Leave Front and Frederick Sts. at 5.16 a.m., and every 6 minutes until 11.28 p.m., last car.

STREET RAILWAY GUIDE—*Continued.*

Leave Bloor and Dovercourt Road at 6.01 a.m., and every 6 minutes until 12.13 a.m., last car.

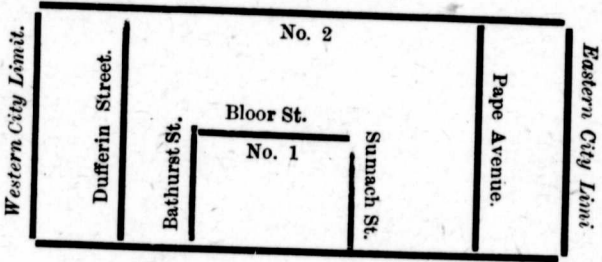
Bloor West—(*White Light*). Via Queen and Spadin Ave, leaves Front and Yonge St. at 5.10 a.m., and every 15 minutes until 11.30 p.m., last car.

Leaves Dufferin St., at 6.00 a.m., and every 15 minutes until 12.15 p.m., last car.

NOTE—The street car system in Toronto is all under the direction of one company, and the same tickets are good on all lines. Fare 5 cents. Tickets are sold at the rate of 6 for 25 cents or 25 for \$1.00. There is also a special limited ticket sold at the rate of 8 for 25 cents good only between the hours of 5.30 and 8 a.m., and 5 and 6.30 p.m.

Cab Regulations.

Northern City Limit.



ONE OR TWO HORSE CABS.

First Division.

One or Two Persons 50 cents.
 Each Additional Person 25 cents.

Second Division.

One or Two Persons 75 cents.
 Each Additional Person 25 cents.

Third Division.

One or Two Persons \$1.00.
 Each Additional Person 25 cents.

The fare by the hour for one or four persons in a two-horse cab is \$1; each additional person, 25 cents.

The fare by the hour for one or three persons in a single horse cab is 75 cents, and for each subsequent hour, 60 cents.

NIGHT TARIFF—The charges for cabs after 12 o'clock midnight to 6 a.m., shall be one-half more than the aforesaid tariff.

CHILDREN.—No charge for children under eight years of age in charge of an adult. Over eight years and under twelve, half-price; over that age, full fare.

BAGGAGE.—One trunk and articles that may be placed inside the cab are to be carried free. For every other article placed on the outside of the cab the cabman is entitled to 5 cents.

Principal Hotels.

NAME.	LOCATION.	Accommo- dation.	RATES PER DAY.
Queen's Hotel.....	78 to 92 Front St. West..	350	\$3.00 to \$4.50
Rossin House.....	King and York	350	3.00 to 4.50
Walker House....	Front and York.....	350	2.00 to 2.50
Palmer House.....	King and York.....	300	2.00
Albion Hotel.....	31 Jarvis.....	250	1.50
Richardson House.	344 King West.....	100	1.50
Black Horse Hotel	Front and George.....	200	1.50
Continental Hotel.	59 Simcoe.....	200	2.00
St. James Hotel..	15 York.....	150	1.50
Hotel Metropole ..	124 King West.....	100	1.50 to 2.00
Arlington.....	King and John.....	150	3.00
Elliott House.....	Church and Shuter.....	100	1.50 to 2.00
Kensington Hotel.	King and York.....	150	1.50 to 2.00
Russell House....	215 Yonge.....	150	1.00 to 2.00
Commercial.....	56 Jarvis.....	150	1.00
International H'l..	Simcoe and Front.....	150	1.00 to 1.50
Power House..	373 King West	100	1.00
Nealon House.....	197 King East.....	100	1.00 to 1.50
Gladstone House..	Queen & Gladstone Av..	100	2.00
Lakeview Hotel...	Parliament & Winchester	100	1.50

Toronto Clubs.

Albany Club—34 Colborne St.
Athenæum Club—Church, between Shuter and Queen.
National Club—98 Bay St.
Ontario Reform Club—8 Adelaide St. E.
Toronto Club—107-9 Wellington, corner York.

Telegraph Companies.

HEAD OFFICES :

Canadian Pacific Telegraph Co.—7 Wellington St. E.
Dominion Telegraph Co.—28-30 Toronto St.
Great North-Western Telegraph Co.—Corner Wellington and
Scott.

Telephone Companies.

Bell Telephone Co.—Fourth flat, *Mail Building*, corner Bay and
King Sts.

Express Companies.

HEAD OFFICES :

Canadian Express—55-57 Yonge St.
Dominion Express—110 King West.

Fire Alarm Signal Boxes.

No.		No.	
4	Cor. Front and Church	134	Cor. Davenport R. & Belm't
5	" Front and Yonge	135	" Yonge and Belmont
6	" Bay Esplanade	136	" Yonge and Cottingham
7	" Front and York	137	" Rosedale & W'dland Av.
8	Parliament Buildings	141	" Knox College
9	Cor. Simcoe and Esplanade	142	" St. Patrick & Spadina
	" King and Bay	143	" College and Spadina Av
13	" King and York	145	" Brunswick & Harbord
14	" King and John	146	" Ba hurst and College
15	" King and Brock	147	" College and Clinton
16	" King and Bathurst	152	" Denison Ave & High
17	" Front and Bathurst	153	" St. Patrick & Bathurst
18	" Front and Brock	154	" Bellevue and Nassau
19	" Front and John	156	" Euclid Ave. and Arthur
21	" King and Yonge	157	" Dundas & Ossington Av
23	" King and Church	158	" Arthur & Gore Vale av.
24	" King and Jarvis	162	" Queen and Dundas
25	" Esplanade & W. M'ket	163	" Queen and Lisgar
26	" Front and Frederick	164	" Dufferin and Flor ence
27	Christie, Brown & Co's Fa	165	" Dundas and Brock Ave.
28	Cor. King and Sherbourne	167	" Doverc't & St. Ann's R.
29	" King and Berkeley	168	" Brock Ave. & Florence
31	" Yonge and Adelaide	172	" King and Niagara
32	" Yonge and Queen	173	" Wellington & Strac'n A
34	" Yonge and Shuter	174	Bridge Manufacturing Co.
35	" Bond and Wilton ave	175	Cor Brock Ave. & Florence
36	" Yonge and Gould	176	Exhibition Buildings
37	" Yonge and McGill	182	Cor. Dundas and Sorawen
38	" Yonge and Wood	183	" Bloor & Dovercourt Rd.
41	" Queen and Elizabeth	184	" Bloor and Symington
42	" Queen and Simcoe	185	" Bloor and Dufferin
43	" Queen and Beverley	192	" Bathurst and Olive Av.
45	" Queen and Brock	193	" Christie & St Thomas A
46	" Queen and Portland	212	" Berkeley & Esplanade
47	" Queen and Bathurst	213	Gooderham & Worts' Dis'y
48	" Queen and Claremont	214	Cor. Front & Trinity
51	" Queen and Church	215	" Front and Beachall
52	" Queen and Jarvis	216	" King and Sumach
53	" Queen and Sherbourne	217	" Queen and River
54	" Jarvis and Wilton Ave	231	" House of Providence
56	" Gerrard and Church	234	" Parliament and Queen
57	" Gerrard and Sherbourne	235	" Sydenham and Ontario
61	" Jarvis and Carlton	236	" Seaton and Wilton Ave.
62	" Jarvis and Wellesley	237	" Parliament and Oak
63	" Sherbourne & Wellesley	241	" Parliament and Carlton
64	" Sherbourne & Isabella	242	" Jail
65	" Charles and Jarvis	243	" Parliament and Amelia
67	" Charles and Church	245	" Winchester & Sackville
71	" Bay and Richmond	246	" Lamb's F't'y & Amelia
72	" Louisa and Teraulay	247	" Gerrard and River
73	" Agnes and Elizabeth	248	" Broadview and Elliott
74	" Teraulay and Hayter	251	" Gerrard and Sackville
75	Hospital for Sick Children	252	" General Hospital
76	Cor. Christopher & Chestnut	253	" Sumach and Wilton Av.

81	Cor. Simcoe and Car Howell	254	Cor. Queen & Broadview A.
82	" Beverley and D'Arcy	256	" Queen and G.T.R. Cr'g
83	" Beverley and College	261	" Gooderham's C'tle Sh'ds
84	" Harbord and Huron	263	" Broadview A. & Gerr'd
85	" Bloor and Walmer Road	264	" De Grassi & Cummings
86	" Bloor & Palmerston ave	265	" Queen and Pape Ave.
91	" Grosvenor & St. Vincent	271	" Queen and Leslie
92	" St. Albans & St Vincent	273	" Queen and Leslie
93	" Yonge and Wellesley	274	" Pape Av. & Gerrard E.
94	" Czar and North	312	" Queen and Gwynne Av.
95	" Yonge and Isabella	314	" Rubber W'ks, W. Lodge
123	" Yonge and Bloor	315	" Lansdowne and Marion
124	" Yonge, op St. Paul's H.	316	" Sorauren Ave.
125	" Bloor, op. St. Paul's Ch	317	" Sorauren Av. and Rush
126	" Cumberland and Belair	318	" Queen & McDonnell Av
127	" Scollard & Hazelton Av	321	" King and Gwynne Ave.
128	" Avenue Road and Bloor	324	Home for Incur. Dunn Ave.
129	" Bloor and St. George	325	Cor. King and Jamieson Av.
132	" Avenue R. & Elgin Av	326	" Queen & Roncesvalle

Places of Interest

- Lieut.-Governor's Residence, King and Simcoo Sts.
 Parliament Buildings, Queen's Park.
 Custom House, cor. Yonge and Front Sts.
 Provincial Lunatic Asylum, Queen St. West.
 Canada Life Buildings, King West.
 Exhibition Grounds and Crystal Palace.
 New Fort and School of Infantry.
 Osgode Hall, Queen St. West.
 College Avenue, North from Queen St. West.
 Queen's Park, Head of College Avenue.
 Monument to the Heroes of Ridgeway, Queen's Park.
 " " Hon. Geo. Brown, " "
- Island Park.
 Meteorological Observatory, Queen's Park.
 School of Practical Science, " "
- Young Women's Christian Association, Elm Street.
 University Buildings, Queen's Park.
 Bank of Commerce, King West.
 Horticultural Gardens, Gerrard and Sherbourne Sts.
 Normal School, Museum, etc., Gould St.
 St. James' Cathedral (Episcopal) King and Church Sts.
 St. Michael's Cathedral (R. C.), Bond and Shuter Sts.
 Metropolitan Church (Methodist), Queen St. East.
 St. Andrew's Church, King and Simcoe Sts.
 Baptist Church, Gerrard and Jarvis Sts.
 Y. M. C. A. Rooms, Yonge and McGill Sts.
 St. James' Cemetery, Parliament and Wellesley Sts.
 Post Office, Adelaide St. East.
 Confederation Life Buildings, Yonge and Richmond.
 St. Lawrence Hall and Market, King St. East.
 Central Prison, Strachan Ave.
 Knox College, Spadina Avenue.
 Baptist College, Bloor St. West.
 Trinity College, Queen St. West.
 Victoria College, Queen's Park.
 Ontario Society of Artists, King St. West.
 Upper Canada College, Head of Avenue Road.
 General Hospital, Gerrard St. East.
 Parkdale Collegiate Institute, Jamieson Ave.
 Public Library, Church and Adelaide Sts.
 Academy of Music, King St. West.
 Toronto Opera House, Adelaide St. West.
 Grand Opera House, Adelaide St. West.
 Board of Trade Building, Front and Yonge Sts.
 Canadian Institute, 58 Richmond East.

Municipal Representatives.

Ward 1, C. C. Small, J. K. Leslie, G. S. Macdonald, Ald. Stewart; *Ward 2*, John Hallam, D. Lamb, D. Carlyle, Thomas Foster; *Ward 3*, B. Saunders, W. B. McMurrich, R. J. Score, Ald. Shaw; *Ward 4*, Wm. Carlyle, Wm. Burns, James Jolliffe, Geo. Verral; *Ward 5*, Wm. Bell, Thos. Crawford, R. H. Graham, Ald. Bailey; *Ward 6*, James Gowanlock, W. P. Atkinson, J. O. Orr, John Maloney.

CIVIC OFFICERS.

Mayor, R. J. Fleming; *Clerk and Division Registrar*, John Blevins; *Solicitor*, C. R. W. Biggar; *Treasurer*, R. T. Coady; *Auditors*, Wm. Anderson and W. W. Jones; *Assessment Commissioner*, Nicholas Maughan; *License Inspector*, Robert Awde; *Health Officer*, Norman Allen, M.D.

FIRE DEPARTMENT.

Office—Hall No. 1, Bay St., cor. Temperance.

Chief, Richard Ardagh; *Secretary*, R. J. McGowan; *Assistant-Chief*, Thomas Graham; *Assistant-Chief, West*, Joseph Davis; *Assistant-Chief, East*, J. W. Thompson.

POLICE DEPARTMENT.

Commissioners, His Worship the Mayor, Chairman, Judge McDougall and Col. Geo. T. Denison; *Police Magistrate*, Col. Geo. T. Denison; *Chief of Police*, Col. H. J. Grasett; *Deputy-Chief*, Wm. G. Stuart.

HARBOR COMMISSIONERS.

(Board of Trade Buildings.)

Chairman, A. B. Lee; *J. H. G. Hagarty*, J. T. Mathews and *Aldermen* R. H. Graham and Thomas Allan; *Harbor Master*, Morgan Baldwin

LICENSE COMMISSIONERS.

Office—1 and 2 Union Block, 36 Toronto St.

Chairman, W. B. McMurrich, Thomas Flynn and Alex. E. Wheeler; *Chief Inspector*, Thomas Dexter; *Inspector West Division*, John Wilson; *Inspector East Division*, Thos. A. Hastings.

Province of Ontario.

Lieutenant-Governor — **HON. GEORGE A. KIRKPATRICK, Q.C., LL.D.,**
PROVINCIAL EXECUTIVE.

Speaker, Hon. Thos. Ballantyne; *Attorney-General*, Sir Oliver Mowat; *Commissioner of Crown Lands*, Hon. A. S. Hardy; *Commissioner of Public Works*, Hon. C. F. Fraser; *Provincial Secretary*, Hon. J. M. Gibson; *Provincial Treasurer*, Hon. Richard Harcourt; *Minister of Education*, Hon. G. W. Ross; *Minister of Agriculture and Registrar*, Hon. John Dryden; *Without Portfolio*, Hon. E. H. Bronson; *Deputy Attorney-General*, J. R. Cartwright; *Assistant Provincial Secretary*, Geo. E. Lumsden; *Assistant Commissioner of Crown Lands*, Aubrey White; *Deputy Minister of Agriculture, etc.*, C. C. James; *Assistant Provincial Treasurer*, D. E. Camerou; *Deputy Minister of Education*, John Miller, B.A.; *Clerk Executive Council*, John R. Cartwright; *Clerk Legislative Assembly*, Charles Todd Gilmour; *Sergeant-at-Arms* F. J. Glackmeyer.

Members in House of Commons.

Toronto Centre, G. R. R. Cockburn (Gov.); Toronto East, E. Coatsworth, Jr. (Gov.); Toronto West, F. C. Denison (Gov.).

REPRESENTATIVES IN LOCAL LEGISLATURE.

Edward F. Clarke, (Opp.); N. G. Bigelow, (Gov.); Joseph Tait, (Gov.).

SENATORS IN DOMINION PARLIAMENT.

Sir D. L. Macpherson, Hon. G. W. Allan, Hon. Frank Smith, Hon. John O'Donohue.

Postal Guide.

COMMISSION ON MONEY ORDERS.

On Orders drawn at and on any Post Office in Canada:—

If not exceeding \$4	2c.
Over \$4, not exceeding \$10	5c.
Over 10, " " 20	10c.
Over 20, " " 40	20c.
Over 40, " " 60	30c.
Over 60, " " 80	40c.
Over 80, " " 100	50c.

Limit of single order \$100, but as many of \$100 each may be given as remitter requires.

MONEY ORDERS EXCHANGE.

Amount in currency (exclusive of commission) to be paid or received for Money Orders drawn in or on Canada, in or on the United Kingdom and Newfoundland:

5s sterl., equivalent to .. \$1.22	£4 sterl., equivalent to .. \$19.48
10s " " .. 2.44	5 " " .. 24.35
15s " " .. 3.65	6 " " .. 29.22
£1 " " .. 4.87	7 " " .. 34.09
2 " " .. 9.74	8 " " .. 38.96
3 " " .. 14.61	9 " " .. 43.83
	10 " " .. 48.70

Money Orders on Great Britain, United States, and all Countries marked * in Foreign Postage-table at undermentioned rates of commission:

If not exceeding \$10	10c.
Over \$10, not exceeding \$20	20c.
Over 20, " " 30	30c.
Over 30, " " 40	40c.
Over 40, " " 50	50c.

CANADIAN POSTAGE RATES.

SEALED LETTERS.

Canada and United States, 3c. per 1 oz. or fraction thereof.
 Gt. Britain and Newfoundl'd, 5c. per ½ oz. " "
 City or Drop Letters 2c. per 1 oz. " "
 Registration Fee.—Canada, Newfoundland, United States, Great Britain and Europe, 5c. each.

POST CARDS.

For Canada and the United States, 1c. each ; for Gt. Britain, Newfoundland and all Postal Union countries, 2c. each. Reply cards (Canada only), 2c. each.

NEWSPAPERS AND PERIODICALS.

Canada and United States, 1c. for 4 ounces ; single papers less than 1 oz., $\frac{1}{2}$ c.; newspapers for City delivery, 1c. per 4 oz. Gt. Britain and Europe, 1c. per 2 oz.; over 2 oz. see Foreign Postage table.

BOOKS, CIRCULARS, ETC.

Limit—24 inches in length, 12 in breadth or depth. Canada 1c. per 4 oz.; limit 5 pounds. United States, Great Britain and Europe, 1c. per 2 oz.; limit 5 pounds. Postal Union countries (except Gt. Britain), limit weight 4 pounds.

Commercial papers and legal documents may be sent to Utd. States, Great Britain and Europe at 5c. for the first 10 oz. and 1c. for additional 2 oz. Deeds and Insurance Policies, 1c. per 2 oz.

PARCEL POST.

WITHIN DOMINION OF CANADA—Limit of weight, 5 pounds ; must not exceed 2 feet in length by 1 foot in width or depth. Six cents per four ounces or fraction thereof ; registration fee, 5c. Parcels may be sealed. No correspondence to be enclosed.

UNITED KINGDOM AND JAPAN, 25c. per lb. or fraction ; JAMAICA and BARBADOES, 20c. per lb., limit of weight 7 lbs. ; NEWFOUNDLAND, 15c. per lb. or fraction. Limit of weight to Gt. Britain, 7 lbs. ; Japan, 5 lbs. ; size must not exceed 2 ft. long by 1 ft. wide or deep. A Customs Declaration, to be had at Post Office, stating contents and value, must be filled up by sender. Parcels for Great Britain are only sent by Canadian steamers.

UNITED STATES—Limit of weight 5 lbs. ; must not exceed 2 ft. long by 1 ft. wide or deep ; 1 cent per ounce. Parcels must not be sealed against examination.

Foreign Parcel Post to Postal Union countries is now in operation. For rates and conditions enquire of Postmasters.

PATTERNS AND SAMPLES.

Bona fide Patterns and Samples of Merchandise in Canada and Newfoundland, 1c. per 4 oz.; limit of weight, 24 oz.

United States, Great Britain and Europe, limit 8 oz., (except Great Britain 12 oz.), 2c. per first 4 oz. and 1c. each additional 2 oz.

FIFTH CLASS—MISCELLANEOUS MATTER.

Comprises such articles of general merchandise as are not entitled to lower rate of postage. Fifth Class matter must be so put up as to be fit for conveyance in mail bags and yet admit of ready and full examination by P.O. officials. Packages to United States subject to Customs duties. Postage must be prepaid at 1 cent per oz. or fraction thereof. Limit of weight 4 lbs.; dimensions not to exceed 2 ft. by 1 ft. wide or deep. Registration 5c. Liquids can now be sent under certain regulations.

FOREIGN POSTAGE TABLE.

COUNTRIES.	Letter	Post	News-	Book
	Rate	Cards	papers.	pkts.
	$\frac{1}{2}$ oz.	each	2 oz.	2 oz.
*Postal Money Order } connection with Canada }				
*Netherlands.....	5	2	1	1
*Newfoundland..	5	2	1	1
*New Zealand—See Australia.				
*Norway.....	5	2	1	1
*Persia—Bander Abas, Bushire, Jask and Linga (India Postal Agency).....	5	2	1	1
Peru.....	5	2	1	1
*Portugal, including Azores and Maderia Islands	5	2	1	1
*Roumania.....	5	2	1	1
Russia, including Finland.....	5	2	1	1
*St. Helena.....	5	2	1	1
Sandwich Islands.....	5	2	1	1
*Seychelles Islands.....	5	2	1	1
*Sierra Leone.....	5	2	1	1
Spain.....	5	2	1	1
*Straits' Settlements (Singapore, etc).....	5	2	1	1
*Sweden.....	5	2	1	1
*Switzerland.....	5	2	1	1
*Tasmania—See Australia.....				
*Turkey (Europ'n Asiatic), Constantinople and Smyrna (British Postal Agencies), Bagdad and Basrah (India Postal Agencies).....	5	2	1	1
Venezuela.....	5	2	1	1
*Zanzibar (India Postal Agency).....	5	2	1	1
WEST INDIA ISLANDS.				
*British : Bahamas, Turks. Island.....	5	2	1	1
“ Antigua, Barbados, Dominica, Gren- ada, Jamaica, Montserat, Nevis, St, Kitts, St. Lucia, St. Vincent, Trini- dad and Tobago, via New York.....	5	2	1	1
*Danish : St. Croix, St. John, St. Thomas.....	5	2	1	1
Spanish : Cuba.....	5	2	1	1
Porto Rico, via New York.....	5	2	1	1
Hayti and San Domingo.....	5	2	1	1

PARCELS can be sent to most Postal Union Countries. Limit of weight 7 lbs., Barbadoes and Japan excepted which is 5 lbs. The rate varies according to weight. Call at enquiry wicket for rates, etc.

Board of Trade.

President, Hugh N. Baird ; 1st Vice-President, Hugh Blain ; 2nd Vice-President, S. F. McKinnon ; Treasurer, George Maclean Rose ; Secretary, Edgar A. Wills, J.P. ; Council, W. Christie, D. R. Wilkie, W. D. Matthews, W. R. Brock, Warring Kennedy, A. A. Allan, George H. Bertram, G. M. Bosworth, A. B. Lee, B. Cumberland, John Donogh, R. W. Elliott, W. B. Hamilton, S. Caldecott, John Earls ; Board of Arbitration, George A. Chapman, Joseph Oliver, R. J. Stark, W. Galbraith, Thomas McLaughlin, J. D. Laidlaw, S. Crane, J. H. G. Hagarty, Thomas Flynn, J. H. Sproule, Charles Pearson, R. S. Baird ; Representatives on Harbor Commission, J. T. Matthews, A. M. Smith ; Representatives on Industrial Exhibition Commission, James Carruthers, W. C. Mathews-W. B. Hamilton ; Solicitor to the Board, W. H. Beatty.

COMMITTEES OF THE BOARD.

Examiners in Flour and Meal, W. Galbraith, J. N. Peer, Wm. M. Stark, J. L. Spink, M. McLaughlin ; Examiners in Grain, W. D. Matthews, H. N. Baird, Geo. A. Chapman, Thomas Flynn, James Carruthers ; Examiners in Hides and Leather, E. Leadley, D. W. Alexander, D. McLean, W. Beardmore, E. J. Davis ; Floor and Coal Board Committee, John Carrick, J. L. Spink, M. McLaughlin ; Grain Inspector, W. Adamson ; Flour Inspector, John Todd ; Inspector of Hides and Leather, E. A. Thompson ; Board of Arbitrators and Examiners in Grain for Ontario, George A. Chapman, chairman, L. A. Tilley, W. D. Matthews, H. N. Baird, Thomas Flynn.

TRADE SECTIONS OF THE BOARD.

BANKERS.

Chairman, B. E. Walker ; Vice-Chairman, R. H. Bethune ; Sec. Treas., Edgar A. Wills.

CONTRACTORS.

Chairman, Richard Dinnis ; Deputy-Chairman, James Brown ; Sec., E. Farquhar ; Executive Committee, Arthur Ardagh, James Gurns, R. Dinnis, A. W. Godson, E. Farquhar.

MILLERS AND WHOLESALE FLOUR MERCHANTS.

Chairman, R. J. Stark ; Deputy-Chairman, W. H. Knowlton ; Sec.-Treas., Edgar A. Wills ; Executive, W. Galbraith, J. L. Spink, J. N. Peer, John Brown, M. McLaughlin.

COAL.

Chairman, T. R. Whiteside, Deputy-Chairman, Wm. McGill ; Treas., R. E. Gibson ; Sec., K. C. Marshall ; Ex., Wm. McGill, E. F. Brown, Elias Rogers, Noel Marshall, F. H. Thompson, S. Crane, W. Bell, T. R. Whiteside.

GRAIN, MALT AND HOPS.

Chairman, H. N. Baird ; Deputy-Chairman, E. O'Keefe ; Sec.-Treas., Edgar A. Wills ; Ex.-Com., N. Weatherston, H. N. Baird, J. Carruthers, Robert Davies, E. O'Keefe.

WHOLESALE DRY GOODS.

Chairman, S. Caldecott ; Deputy-Chairman, T. O. Anderson ; Sec.-Treas., Edgar A. Wills ; Ex.-Com., T. O. Anderson, S. Caldecott, W. Blackley, J. Short McMaster, Andrew Darling, Paul Campbell, John Knox, Hamilton, Ont.

TRADE SECTIONS OF THE BOARD—Continued.**LUMBER.**

Chairman, Jos. Oliver ; Dep.-Chairman, Wm. Leak ; Sec.-Treas., Edgar A. Wills.

WHOLESALE HARDWARE AND METAL.

Chairman, A. B. Lee ; Dep.-Chairman, P. Howland ; Sec.-Treas., Edgar A. Wills ; Ex.-Com., A. B. Lee, P. Howland, Geo. Bertram, Alex. McMichael, L. Samuels.

MARINE.

Chairman, B. Cumberland ; Dep.-Chairman, Capt. S. Sylvester ; Sec.-Treas., Edgar A. Wills ; Ex.-Com., B. Cumberland, J. T. Matthews, W. A. Geddes, Capt. S. Crangle, Capt. S. Sylvester.

JEWELLERS AND SILVERSMITHS.

Chairman, J. C. Copp ; Dep.-Chairman, M. C. Ellis ; Sec.-Treas., Edgar A. Wills ; Ex.-Com., W. K. McNaught, T. H. Lee, M. C. Ellis, John C. Copp, E. Scheuer.

Weights and Measures.

MEASURES OF LENGTH.

	Inches.	Feet.	Yards.	Poles.	Chns.	Fur
Foot.....	12	1				
Yard.....	36	3	1			
Rod, pole or perch..	198	16½	5½	1		
Chain.....	792	66	22	4	1	
Furlong.....	7,920	660	220	40	10	
Mile.....	63,360	5,280	1,760	320	80	8
Mile, Geographical.....	6,082·66 feet.					

PARTICULAR MEASURES OF LENGTH.

A hand, 4 inches. Link, 7·92 inches. Cubit, 18 inches.
 A pace military, 2 ft. 6 in. Pace geometrical, 5 ft. Fathom, 6 ft.
 Cable's length 120 fathoms. League, 3 miles. Admiralty knot
 6,080 ft. Degree, 69½ miles=60 nautical knots or geog. miles.

SQUARE OR SURFACE MEASURE.

	Inches.	Feet.	Yards.	Pis.	Chns.	Roods.
Square foot.....	144	1				
Square yard.....	1,296	9	1			
Rod, pole or perch	39,204	272½	30½	1		
Square chain.....	627,264	4,356	484	16	1	
Rood.....	1,568,160	10,890	1,210	40	2½	1
Acre.....	6,272,640	43,560	4,840	160	10	4

A square mile contains 640 acres = 2,560 roods, 6,400 chains.
 102,400 rods, poles or perches, or 3,097,600 square yards.
 A square acre is 209 feet (nearly) or 12½ rods on each side.

CUBIC OR SOLID MEASURE.

1728 cubic inches..... = 1 cubic foot.
 27 cubic feet..... = 1 cubic yard.
 400 cubic feet of rough, or 50 of hewn timber = 1 ton or load.
 42 cubic feet of timber..... = 1 shipping ton.
 108 cubic feet..... = 1 stack of wood.
 128 cubic feet 4x4x8..... = 1 cord of wood.
 40 cubic feet merchandise..... = 1 ton shipping.

FLUID MEASURE.

60 minims. .. = 1 fluid drachm. | 20 ounces..... = 1 pint.
 8 drachms. .. = 1 ounce. | 8 pints..... = 1 gallon.

APOTHECARIES' WEIGHTS AND MEASURES.

20 grains..... = 1 scruple..... = 20 grains.
 3 scruples..... = 1 drachm..... = 60 "
 8 drachms..... = 1 ounce..... = 480* "
 12 ounces..... = 1 pound lb..... = 5760* "

*The Avoirdupois ounce of 437½ grains, and the pound of 7,000 grains are the weights named in the London Pharmacopœia, and the drugs are purchased by Avoirdupois weight.

TROY WEIGHT.

3 17 grains (U.S. 3·2) = 1 carat. | 20 pennyweights = 1 ounce.
 24 grains = 1 pennyweight. | 12 ounces = 1 pound.

WEIGHTS AND MEASURES—Continued

AVOIRDUPOIS WEIGHT.

27½ grains = 1 drachm = 27.34375 grains.
 16 drachms = 1 ounce (oz) = 437.5 grains.
 16 ounces = 1 pound (lb.) = 7,000 grains.
 25 pounds = 1 quarter (qr.).
 4 quarters = 1 hundredweight (100 lb.).

Wheat	per bushel	60 lbs.	Timothy	per bushel	48 lbs.
Indian corn	"	56 "	Buckwheat.	"	48 "
Peas	"	60 "	Flax seed	"	56 "
Barley	"	48 "	Hemp seed	"	44 "
Malt	"	36 "	Blue grass	"	14 "
Oats	"	34 "	Roots, Potatoes, Turnips,		
Beans	"	69 "	Carrots, Parsnips, Beets,		
Clover seed	"	61 "	and Onions . per bushel	60 "	

COAL.

Anthracite (broken) 54 pounds cubic foot.

Bituminous, 49 pounds to cubic foot.

" 70 pounds to bushel.

One ton loose occupies 43 to 48 cubic feet.

The Supreme Court of Judicature of Ontario.

COURT OF APPEAL FOR ONTARIO.

Chief Justice of Ontario, Hon. John Hawkins Hagarty, D.C.L.
Justices of Appeal, Hon. G. W. Burton, Hon. F. Osler, Hon. Jas. Maclellan; *Registrar*, Alexander Grant.

High Court of Justice for Ontario.

QUEEN'S BENCH DIVISION—*Chief Justice*, Hon. J. D. Armour; *Members of the Queen's Bench Division*, Hon. W. G. Falconbridge, Hon. W. P. R. Street; *Registrar*, James S. Cartwright.

CHANCERY DIVISION—*Chancellor*, Hon. John A. Boyd; *Members of the Division*, Hon. R. M. Meredith, Hon. Thomas Ferguson and Hon. Thomas Robertson; *Special Examiners*, W. D. Gwynne, John Bruce, F. Arnoldi and L. B. Young; *Registrar*, G. S. Holmsted; *Clerk of Records and Writs*, G. M. Lee.

COMMON PLEAS DIVISION—*Chief Justice*, Hon. Sir Thomas Galt; *Members of the Division*, Hon. John E. Rose, Hon. Hugh Mc. Mahon; *Registrar*, M. B. Jackson; *Master in Chambers*, R. G. Dalton, Q.C.; *Master in Ordinary of the Supreme Court*, Thomas Hodgins, Q.C.; *Chief Clerk and Official Referee*, N. McLean; *Accountant*, G. S. Holmsted; *Taxing Officers*, J. H. Thom, S. B. Clark.

MARITIME COURT OF ONTARIO—*Judge for the whole Province*, J. E. McDougall, Q.C.; *Registrar*, John Bruce.

CROWN LAW OFFICERS.

Attorney-General for the Province of Ontario, Hon. O. Mowat, Q.C.

OFFICERS OF THE COURTS.

Official Guardian, John Hoskin, Q.C.; *Senior Judgment Clerk*, G. S. Holmsted; *Junior Judgment Clerk*, A. F. McLean; *Inspector of Titles and Referee of Titles at Toronto*, G. S. Holmsted; *Inspector of Local Offices*, M. B. Jackson; *Clerk of Assize*, High Court of Justice, G. B. Nicol, Toronto; *Clerk of the Process*, Alex. MacDonall; *Inspector of Public Offices*, John Winchester.

COUNTY COURT—*Senior Judge*, Joseph E. McDougall; *Junior Judge*, Edward Morgan; *Second Junior Judge*, Fred. M. Morson; *Sheriff*, Fred. Mowat.

DIVISION COURT—*Judges*, Edward Morgan and F. M. Morson.

MARITIME COURT—*Judge*, Joseph E. McDougall.

SURROGATE COURT—*Judge*, Joseph E. McDougall.

LAW TERMS.

Hilary Term—Begins 1st Monday in February and ends Saturday of ensuing week.

Easter Term—Begins third Monday in May and ends Saturday of the second week thereafter.

Trinity Term—Begins on the Monday after the 21st August and ends on Saturday following.

Michaelmas Term—Begins third Monday in November and ends Saturday of the second week thereafter.

These Terms are subject to extension by Rule of Court.

Military Guide.

Minister of Militia—Hon Mackenzie Bowell.

Major-General Commanding the Militia—Maj.-Gen. Ivor J. C. Herbert, C.B.

DISTRICT STAFF (No. 2.)

Deputy Adjutant General—Lt. Col. W. D. Otter.

Brigade Major—Bt. Lt. Col. John Gray.

District Paymaster and Sup't of Stores—Hon. Lt. Col. W. N. Alger.

INFANTRY SCHOOL CORPS.

"C" Company, Royal School of Infantry.

Commandant—Lt. Col. W. D. Otter.

Captain—Major Buchan.

CAVALRY.

The Governor-General's Body Guard. *Lt.-Colonel*, George T. Denison. *Major*, Bt. Lieut Col. F. C. Denison, C. M. G. *Four Troops. Captains*, Bt. Lt.-Col. Orlando Dunn, C. A. K. Denison, J. R. Button, F. A. Fleming. *Adjutant*, Capt. W. H. Merritt.

FIELD BATTERIES.

Toronto F. B. of Artillery. *Major*, J. H. Mead; *Capt.*, J. P. Beaty.

INFANTRY AND RIFLES.

2nd Rattalion, "Queen's Own Rifles of Canada." *Lt.-Colonel*, R. B. Hamilton. *Majors*, J. M. Delamere and Villiers Sankey. *Ten Companies. Captains*, H. M. Pellatt, J. A. Murray, J. C. McGee, W. G. Mutton, J. B. Thompson, P. L. Mason, H. V. Green, E. F. Gunther, A. B. Lee. *Paymaster*, Hony. Capt. C. C. Bennett. *Adjutant*, Capt. Geo. Mercer.

10th Battalion, "Royal Grenadiers." *Lt.-Colonel*, G. D. Dawson, A. D. C. *Majors*, H. A. Bagshaw and J. Mason. *Ten Companies. Captains*, F. A. Caston, F. F. Manley, R. G. Trotter, H. C. Greville, J. D. Hay, A. C. Gibson, W. S. Lowe, A. B. Cameron, J. D. Mackay, S. A. Heward. *Adjt.*, J. B. McLean.

48th Battalion "Highlanders." *Lt.-Colonel*, John I. Davidson. *Majors*, A. M. Cosby and W. C. McDonald. *Eight Companies. Captains*, J. F. Michie, D. W. Robertson, D. McGillivray, Chas. Hunter, Wm. Hendrie, R. S. Cassels, J. A. Currie and W. Henderson. *Adjutant*, Walter Macdonald.

TORONTO GARRISON ARTILLERY.

M. B. McMurrich—*Captain*.

Public School Board.

OFFICE—YORK, CORNER RICHMOND.

Chairman, W. D. McPherson; *Secretary-Treasurer*, W. C. Wilkinson; *Inspector*, J. L. Hughes; *Assistant-Inspector*, W. F. Chapman; *Trustees*, R. S. Baird, C. A. B. Brown, J. C. Clarke, John Douglas, Dr. E. J. T. Fisher, Dr. Stowe Gullen, W. J. Hambly, W. W. Hodgson, A. E. Hagerman, Mrs. J. Harrison, E. Jenkinson, Wm. Kerr, H. A. E. Kent, Walter S. Lee, W. D. McPherson, R. U. McPherson, W. McSpadden, Mrs. M. McDonnell, G. W. Mingay, Dr. W. W. Ogden, W. A. Reid, E. P. Roden, E. O. Weston, T. R. Whiteside.

CHAIRMEN OF COMMITTEES.

Finance, A. E. Hagerman; *School Management*, H. A. E. Kent; *Sites and Buildings*, W. McSpadden; *Printing and Supplies*, William Kerr; *Night Schools*, G. W. Mingay

ADDRESSES, Etc.

Parks.

Bellwoods—South side Arthur, between Bellwoods Ave and Shaw.

Clarence Square—Corner Spadina and Wellington.

Denison—South side Denison, between Augusta and Bellevue.

Dovercourt—Head of Dovercourt Road.

Dufferin—880 Dufferin St.

Glen Grove—Eglinton.

High Park—North side Queen, west city limits.

Horticultural Gardens—Sherbourne St., between Gerrard and Carlton.

Island Park—Island, opposite city.

Ketchum Park—Between Davenport Road and Scollard.

Kew Gardens—South side Queen east, east city limits.

Lorne—West of Humber river.

Queen's—Head of College Ave from Queen.

Reservoir—Deer Park.

Riverdale—Sumach, south east corner Winchester.

Riverside—East side Humber River.

Stanley Park—Wellington Ave, corner Walnut Ave.

Victoria Park—East city limits.

Walmer Park—Walmer Road, corner Lowther.

Band Concerts.

- June 13, Evening, Clarence Square, Q. O. R.
 " 15, Evening, Bellwoods, Grenadiers.
 " 18, Afternoon, High Park, Q. O. R.
 " 22, Evening, Riverside Park, Grenadiers.
 " 24, Evening, Queen's Park, Q. O. R.
 " 25, Afternoon, Island Park, Grenadiers.
 " 27, Evening, Horticultural Gardens, Q. O. R.
 " 29, Evening, Queen's Park, Grenadiers.
 July 1, Evening, Queen's Park, Q. O. R.
 " 2, Afternoon, Island Park, Q. O. R.
 " 4, Evening, Horticultural Gardens, Grenadiers.
 " 6, Evening, Riverside Park, Q. O. R.
 " 9, Afternoon, High Park, Grenadiers.
 " 11, Evening, Bellwoods Park, Q. O. R.
 " 13, Evening, Queen's Park, Grenadiers.
 " 15, Evening, Riverside Park, Grenadiers.
 " 16, Afternoon, Island Park, Q. O. R.
 " 18, Evening, Clarence Square, Grenadiers.
 " 20, Evening, Queen's Park, Q. O. R.
 " 23, Afternoon, Island Park, Grenadiers.
 " 26, Evening, Riverside Park, Q. O. R.
 " 27, Evening, Queen's Park, Grenadiers.
 " 30, Afternoon, Island Park, Q. O. R.
 Aug. 1, Evening, Horticultural Gardens, Grenadiers.
 " 3, Evening, Queen's Park, Q. O. R.
 " 6, Afternoon, High Park, Grenadiers.
 " 8, Evening, Riverside Park, Q. O. R.
 " 10, Evening Queen's Park, Grenadiers.
 " 13, Afternoon, Island Park, Q. O. R.
 " 15, Evening, Queen's Park, Grenadiers.
 " 18, Evening, Bellwoods Park, Q. O. R.
 " 19, Evening, Riverside Park, Grenadiers.

Consuls in Toronto.

- Argentine Republic*—Nicol Kingsmill, Fred Nicholls (Vice.)
Brazil—George Musson, Vice-Consul.
France—Alexander T. Fulton.
German Empire—S. Nordheimer.
Hawaiian Kingdom—Hon. J. Enoch Thompson, Col. Geo. A. Shaw, V. Consul.
Italy—Chev : A. M. F. Gianelli, (Honorary).
Liberia, Republic of—Hon. J. Enoch Thompson, Fred Nicholls, (Vice.)
Netherlands—B. Homer Dixon, Albert Nordheimer, (Vice).
Spain—Hon. J. Enoch Thompson.
Sweden & Norway—J. S. McMurray.
United States—Charles H. Pope, Chas. A. Hirschfelder (Vice).

Board of Underwriters.

Office—Board of Trade Building.

A. W. Smith, President ; Joseph B. Reed, Vice-President ; Robt. McLean, Secretary.

Libraries.

Provincial Library, Provincial Buildings, Front St.
Public Library, cor. Church and Adelaide.
Canadian Institute, Library, Richmond E. cor. Victoria.
Educational Department, Gould St., cor. Victoria.
Osgoode Hall, Osgoode Hall.
Y. M. C. A., Yonge St. cor. McGill.

Central Churches.

Baptist.

Jarvis St., cor. Gerrard—Rev. B. D. Thomas, D.D.
College St., cor. Palmerston Ave—Rev. S. S. Bates.

Catholic.

St. Michael's Cathedral, Bond, cor. Shuter—Very Rev. Jno. J. McCann, V.G.

Anglican

St. James' Cathedral, King E., cor. Church St—Rev. Canon DuMoulin.

Church of Ascension, Richmond W—Rev. H. G. Baldwin.

St. Philip's, Spadina, cor. St. Patrick—Rev. J. F. Sweeney, D.D.

Congregational.

Bond St., cor. Wilton Ave—Rev. Jos. Wild, D.D.

Hebrew.

Richmond St. Synagogue, near Victoria—Rev. B. Elzeas, Rabbi.

Presbyterian.

Bloor St., cor. Huron—Rev. W. G. Wallace.

Central, St. Vincent, cor. Grosvenor—Rev. D. McTavish, M.A.

Cooke's, cor. Queen and Mutual—Rev. W. Patterson.

Knox, Queen, near Yonge—Rev. H. M. Parsons, D.D.

St. Andrews, cor. King and Simcoe—Rev. J. D. Macdonnell, M.A.

St. James' Square, 40 Gerrard E—Rev. S. H. Kellogg, D.D.

St. Andrews, (Old) cor. Jarvis and Carlton—Rev. J. M. Milligan.

Lutheran

German Evangelical, 116 Bond—Rev. E. M. Geugmer, Pastor.

Unitarian.

First Unitarian Church, 216 Jarvis—Rev. T. C. Jackson.

Methodist.

Metropolitan, cor. Queen and Church—Rev. Jno. N. Smith.

Carlton, near Yonge—Rev. James Henderson.

Sherbourne St., cor. Carlton—Rev. Thomas Manning.

Broadway Tabernacle, cor. Spadina and College—Rev. Jno. Philip, M.A.

Elm St—Rev. J. E. Starr.

Queen St., bet. Peter and Spadina—Rev. Manley Benson.

Cemeteries.

Mount Pleasant, East side Yonge and North of City limits.
 Necropolis, Winchester, cor. Sumach.
 St. James', Parliament, cor. Wellesley.
 St. Michael's, West of Yonge, North of City limits.
 Prospect, N. side of St. Clare Ave., W. of Dufferin.

Hospitals.

Bellevue House Hospital, 87 Bellevue Ave.
 Burnside Lying-in Hospital, Gerrard E., cor. Sackville.
 Hospital for Sick Children, Jarvis and Lombard.
 Lakeside Home for Little Children, Hanlan's Point, Island.
 Smallpox Hospital, Broadview Ave., N. of Gerrard E.
 St. John's Hospital, 28-34 Major St.
 General Hospital, Gerrard E., cor. Sackville.
 Andrew Mercer Eye and Ear Infirmary, Gerrard E., cor. Sackville.

Asylums, &c.

Asylum for the Insane, S. side of Queen, opp. Dundas St.
 Asylum for the Insane, Mimico.
 Aged Women's Home, McMurrich St.
 Boys' Home, 339 George St.
 Girls' Home, 229 Gerrard E.
 Girls' Industrial Institute, 33 Shepherd.
 Haven and Prison Gate Mission, 320 Seaton St.
 Home for Incurables, 130 Dunn Ave.
 Newsboys' Lodging and Industrial Home, 59 Frederick St.
 Old Folks' Home, 221 Elizabeth St.
 Protestant Orphan Home, 344 Dovercourt Rd.

Express Tariff.

For every hour complete for a Two Horse Wagon or Vehicle. 75c. For a Single Horse Wagon or Vehicle, 50c.

For every half hour or fraction thereof:—For a Two Horse Wagon or Vehicle, 50c. ; for a One Horse Wagon or Vehicle, 25c.

Fifty per cent. to be added to these rates for any hour engaged between 7 p.m. and 7 a.m.

Freight Service

GRAND TRUNK RAILWAY.

All freight for the following points must be at the G. T. Depot at or before time given, namely:—

All points East to Belleville.....	8.00 p.m.
All points Belleville and East thereof.....	7.30 p.m.
Haliburton, Midland and Coboconk branches..	4.00 p.m.
All points from Allandale North to Meaford, Penetang, and North Bay.....	10.00 a.m.
Allandale and intermediate points.....	7.00 p.m.
All points between Guelph and Durham, Wiarton, Southampton or Kincardine.....	6.30 p.m.
Main Line, West to Sarnia.....	6.50 p.m.
G.W.R. West, Woodstock to Windsor Junc.....	6.30 p.m.
G.W.R. West to Eastwood.....	8.00 p.m.
G.W.R. East to Niagara Falls.....	12.00 noon and 8.00 p.m.
Brantford to Tilsonburg.....	11.00 p.m.
Jarvis to Glencoe (Air Line).....	11.00 p.m.
Goderich Branch.....	6.30 p.m.
N. & N.W. Div. Burlington to Georgetown.....	11.00 p.m.
N. & N.W. Div. North of Georgetown.....	8.00 p.m.

CANADIAN PACIFIC RAILWAY.

All freight for the following points must be at C.P.R. Depot at or before time given, namely:—

Main Line East, Fast Freight.....	6.00 p.m.
Main Line East, Local Freight.....	7.30 p.m.
Galt, Woodstock, London, Guelph, Ingersoll, St. Thomas, Glencoe, Newbury, Bothwell, Thamesville, Chatham, Belle River, Windsor.....	5.00 p.m.
All other Western points.....	6.00 p.m.
Wingham and Teeswater Branches.....	5.00 p.m.
Manitoba and North-West.....	5.00 p.m.

Senior Lacrosse League 1892.

SCHEDULE.

June	4—Capitals v. Montreal	At Ottawa.
"	11—Shamrock v. Capitals	Shamrock
"	18—Toronto v. Montreal	Montreal.
"	18—Cornwall v. Capitals	Cornwall.
July	1—Shamrock v. Toronto	Toronto.
"	1—Cornwall v. Capitals	Ottawa.
"	9—Shamrock v. Montreal	Shamrock
"	9—Cornwall v. Toronto	Cornwall.
"	23—Cornwall v. Montreal	Cornwall.
"	23—Shamrock v. Capitals	Ottawa.
Aug.	6—Shamrock v. Cornwall	Cornwall.
"	13—Shamrock v. Toronto	Shamrock
"	20—Capitals v. Montreal	Montreal.
"	27—Cornwall v. Toronto	Toronto.
Sept.	3—Shamrock v. Montreal	Montreal.
"	3—Toronto v. Capitals	Toronto.
"	17—Toronto v. Montreal	Toronto.
"	17—Shamrock v. Cornwall	Shamrock
Oct.	1—Cornwall v. Montreal	Montreal.
Oct.	1—Capitals v. Toronto	Ottawa.