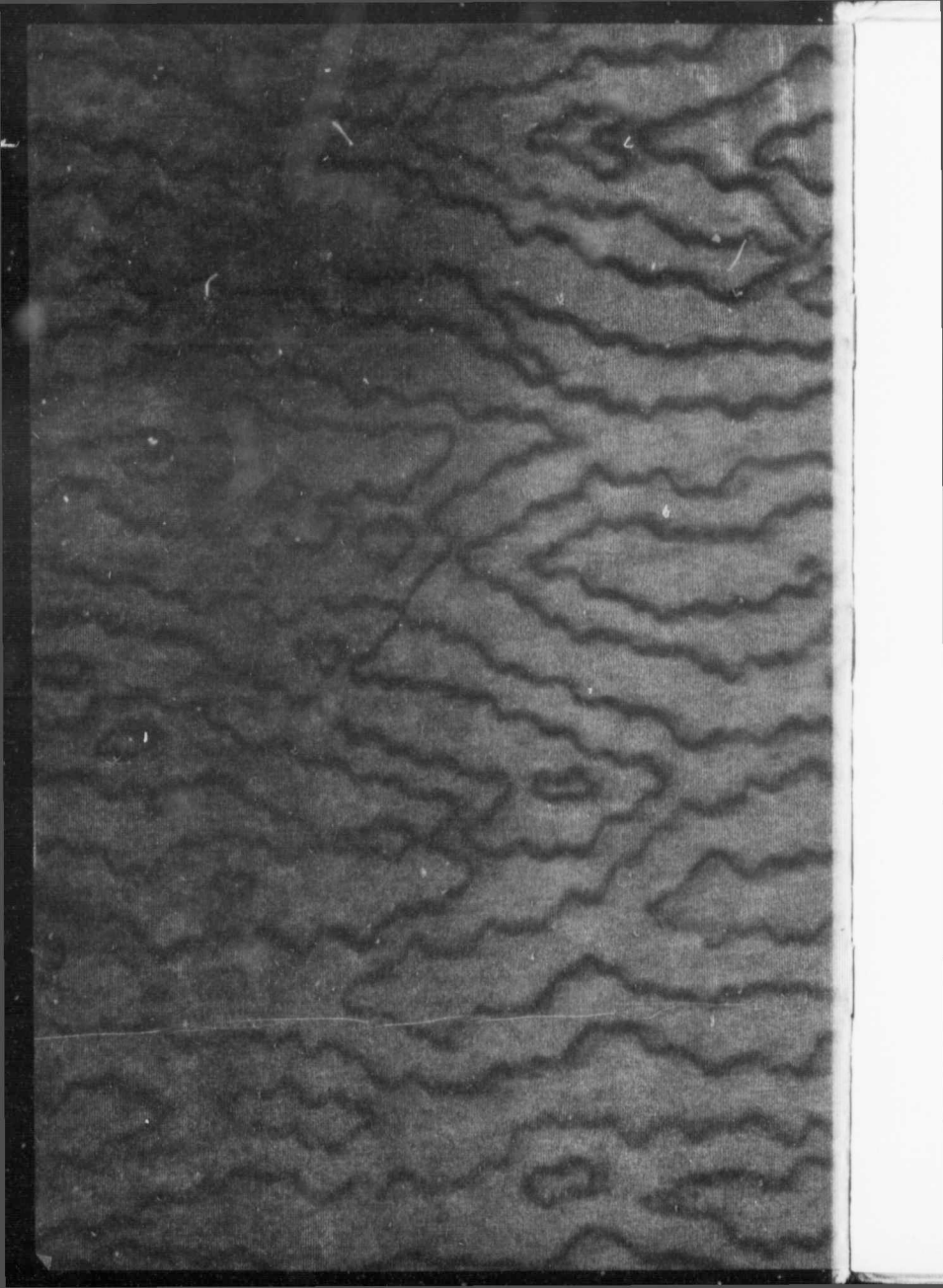


CHATEAU
LAURIER

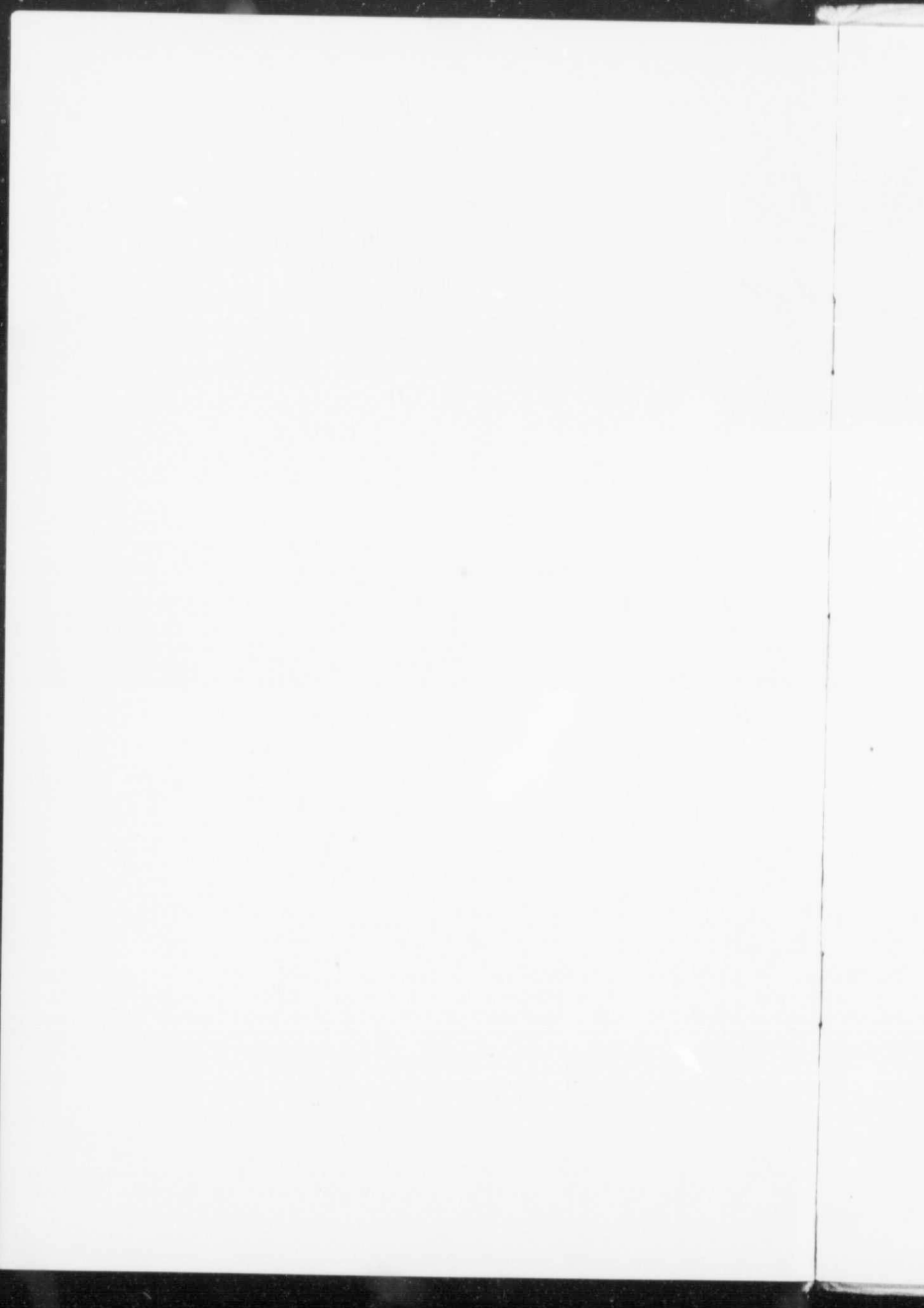


OTTAWA
CANADA

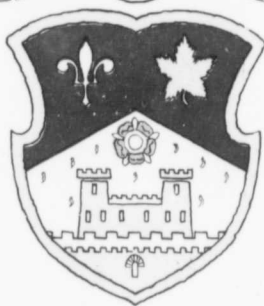
CHATEAU LAURIER



CHATEAU LAURIER



CHATEAU LAURIER



GRAND TRUNK

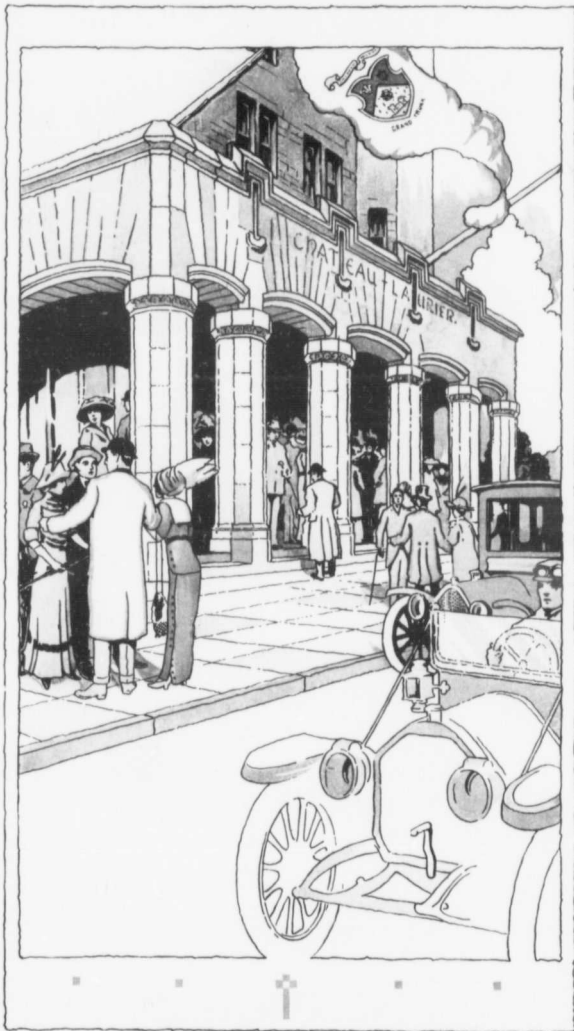
Chateau
Laurier



OTTAWA
CANADA

GRAND TRUNK RAILWAY SYSTEM

1904



CHATEAU LAURIER



HE Chateau Laurier, named after the Right Honorable Sir Wilfred Laurier, G. C. M. G., ex-Premier of Canada, built by the Grand Trunk Railway, at a cost of \$1,500,000, is situated in the southwestern corner of the historic Major's Hill Park, where Colonel Bolton of the staff of Colonel By lived in the days of old Bytown, and commands magnificent views of the Parliament Buildings, the Rideau Canal, the Gatineau and Ottawa Valleys, and the Laurentian Hills.

An old style of French architecture has been used for the Chateau Laurier, and it is built of granite and light buff Indiana sandstone with a copper roof. It contains 350 bedrooms, two thirds of which have private baths; all are outside rooms and all the windows on the bedroom floors command views of the Provinces of Ontario and Quebec.

On the main floor is the office, Rotunda, Ladies' Reception Room, Dining Room, and the Dining Room Corridor, also Café, Lounge or Gents' Writing Room, and Palm Room; the latter is used as a tea room. The Ladies' Writing Corridor is on the Mezzanine floor, and the Foyer, Banquet Room, Ball Room and the State Apartments are on the First Floor.

In the basement is the Grill Room, Bar and Bar Room, Barber Shop and Manicuring Parlors, and Public Lavatory.

The second, third, fourth, fifth and sixth floors have each fifty-three bedrooms, and in selecting the furnishings for these rooms the thought to make them home-like has been foremost.

Page three





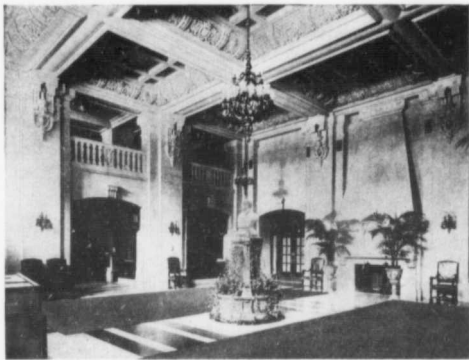
On each floor, particularly well-located rooms are furnished in an especially attractive manner for Parlor Bedroom Suites.

The corridors are divided into sections by means of fire doors to separate them in an emergency, although the Hotel is absolutely fireproof, no wood except door frames and baseboards having been used in its construction. The main corridors lead directly to fire escapes (iron balconies and stairways inside the building). All the windows and service doors are screened with the best Canadian fly screens, and a special refrigerating room is provided to freeze the garbage until it is removed from the building.

The kitchen and its equipment is equal to the best on the American Continent. An especial refrigeration system is installed and an Ice plant added to furnish the Hotel and Station with artificial ice made from distilled water, sterilized by an effective method to provide pure drinking water to the guests.

The Hotel laundry, with all the latest improved machinery for doing guests' work, is in the sub-basement. All the power for lighting and heating, steam for kitchen and laundry, ice and refrigeration, is supplied the Hotel by its own plant in the rear of the Station, 400 yards from the Hotel, so that the usual vibration from the machinery located within the building is not felt. The Hotel is also connected with the Central Union Station by means of a subway at the foot of the main stairway.





ROTUNDA



THE Rotunda is entered through a Loggia, and is decorated in Francis First style with richly panelled and modelled ceilings.

The walls are of caen stone and the floors are laid in Napoleon grey and Belgian black marble.

Tiffany's leaded art glass is used in decorating the three clerestorey windows, in which are placed attractive flower boxes.

To add further charm to this magnificent room is the finely carved caen stone fire-place.

Here is also located the Main Office of the Hotel, Telephone Exchange and Telegraph Office.

Page five





PALM ROOM



HIS room is titled the "Barrel Vaulted Room" because of the style of its ceiling.

It is Renaissance in character with caen stone walls, and floors of Gruby tiles, in shades to match the scheme of decoration. Here is also a caen stone and marble fire-place.

Especially designed tables and chairs and settees in verde antique were chosen for this room, in which tea is served every afternoon between the hours of four and six.

Page six



THE LOUNGE



SIMPLE Flemish style is used in this room with wainscoting of oak and richly modelled plaster frieze and cornices.

This room is chiefly used as a gentlemen's writing and smoking room.

The marble staircase in the center of the room leads to the Grill Room, Bar Room, Barber Shop, Manicure Parler and Lavatory.





MAIN DINING ROOM



THE Main Dining Room, which is situated at the end of the Dining Room Corridor in the extreme southwest corner of the Hotel and facing Major's Hill Park and Parliament Buildings, is quite different from the other rooms.

It is 83 feet long, by 50 feet wide, by 29 feet high, and is decorated in the Elizabethan period with wainscoted walls of oak.

The magnificent view from the many large, full-length windows is a particularly attractive feature of this room. Tiffany's art glass is used in the upper part of the windows, the tone of which is in keeping with the rest of the decorations. This room has also a large fire-place, above which is a mural painting of the period in which this room is decorated.

Page eight



THE MEZZANINE

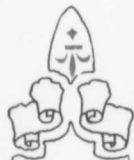
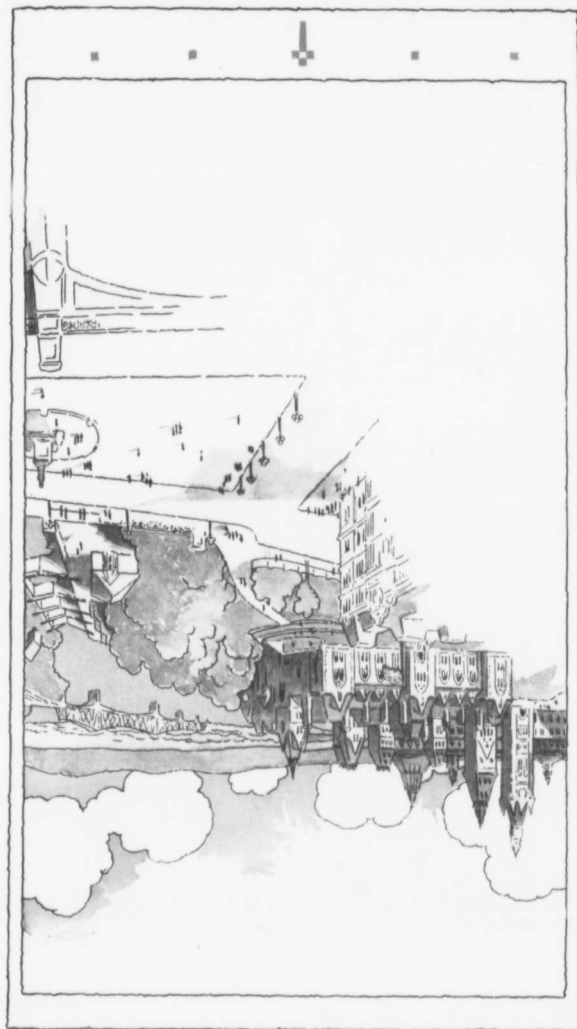
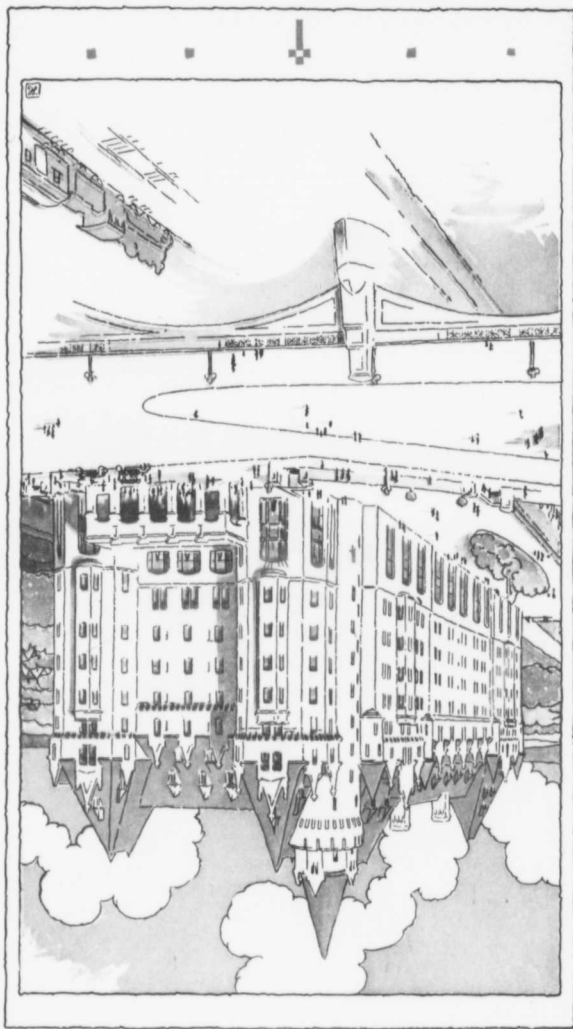


THE Mezzanine Floor consists of
Ladies' Writing Corridor
Ladies' Lounge
Balcony overlooking the Rotunda
Musicians' Gallery overlooking Main
Dining Room and Cafe
Manager's Office
Accountant's and Auditor's Office
Public Stenographer's Office.

The decoration of the Ladies' Writing Corridor is in Louis XVI period with panelled ceiling and French grey enamelled woodwork.

Page nine







THE BANQUET ROOM

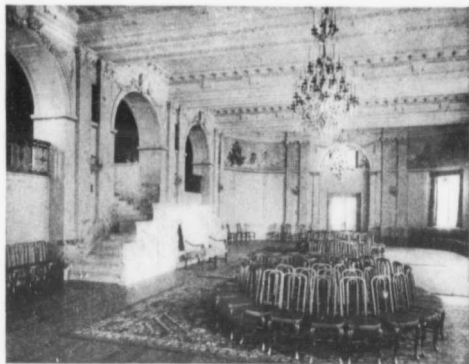


THE Banquet Room is very spacious, has a seating capacity of 250 and is decorated in Louis XVI period.

The large windows extending the full height of the room face Major's Hill Park and give a fine view of the Ottawa Valley.

It is connected with the Foyer, a large room which is used for the assembling of guests before banquets and during the intermission of dances.

The Foyer, like the Ball and Banquet Rooms, is decorated in Louis XVI period and the furniture Italian Walnut.



BALL ROOM



SUPERB Louis XVI room, seventy feet long by forty feet wide by twenty feet in height and admirably adapted for the purpose.

It is divided into bays with double fluted columns which support massive beams that span the room. In the apsidal ends there are wall decorations of large painted panels portraying classical subjects which harmonise beautifully with the tone of the room.

The floor is laid according to the latest improvements in Ball Room floor construction.

Page thirteen





GRAND TRUNK CENTRAL STATION



BEAUTIFUL building situated opposite the Chateau Laurier and connected with the Hotel by a well-lighted subway.

The building has been planned to meet all practical and general requirements and provides not only a railway terminal to meet the needs of the traveling public, but an architectural adornment to the Capital City of the Dominion of Canada.

It is regarded as one of the best among railway terminals erected.



A VISTA FROM THE "CHATEAU LAURIER"



HE Capital of the Dominion occupies a striking position on high cliffs, overlooking the Ottawa River, and commands a view of varied scenery combining mountain, river and vale, indescribable for beauty and grandeur. The Rideau River flows into the Ottawa River over most beautiful twin falls within the city limits.

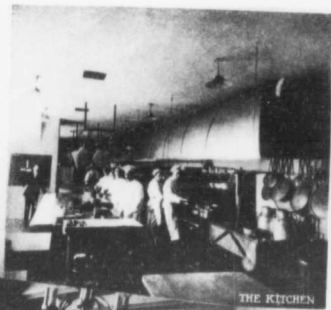
The city is most picturesque and charming. The Parliament Buildings and other Government and public buildings, as well as a large number of private homes constructed of native stone and brick, are elaborate and most striking in architectural design, with most beautifully appointed grounds. The streets are broad and clean, and are lined with heavily foliaged shade trees and splendidly lighted.

Page fifteen

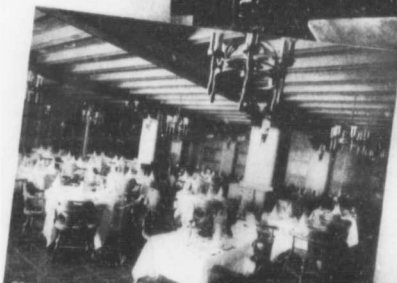




Hotel



THE KITCHEN



GRILL ROOM



THE BAR





DINING ROOM



DINING ROOM



LADIES' CAFE



INFORMATION

For all information as to how to reach Ottawa, and for full particulars regarding railway rates, routes, maps, etc., apply to any of the following Grand Trunk System Agencies:

Alexandria Bay, N.Y.	Corwall Bros.	Ticket Agents, Market St.
Battle Creek, Mich.	L. J. Bush	Passenger Agent, G. T. Ry. Station.
Bay City, Mich.	Fred C. Wherrett	Passenger Agent, G. T. Ry. Station.
Boston, Mass.	F. H. Boynton	New England Pass. Agt., 256 Washington St.
Brockville, Ont.	J. H. Fullford	Ticket Agent, 8 Court House Ave.
Buffalo, N.Y.	H. A. Morgan	City Pass. and Tkt. Agt., 285 Main St.
Chicago, Ill.	C. G. Ortenburger	C. P. & T. A., 301 South Clark St.
Cortland, N.Y.	D. P. Drewery	Traveling Pass. Agt., 6 Burgess Block.
Detroit, Mich.	Geo. W. Watson	City Pass. and Tkt. Agt., 118 Woodward Ave.
Ellet, Mich.	V. A. Bovee	Passenger Agent, G. T. Ry. Station.
Fort Williams, Ont.	Bay Street & Co.	Ticket Agents, 201-203 Simpson St.
Grand Rapids, Mich.	C. A. Justin	City Pass. and Tkt. Agt., G. T. Ry. Station.
Hamilton, Ont.	C. R. Morgan	C. P. & T. A., 11 James St., North
Kansas City, Mo.	Gay W. Norman	Trav. and Pass. Agt., 327 Sheldley Bldg.
Kingston, Ont.	J. P. Hanley	City Passenger and Ticket Agent, 67 Earl St.
Lausling, Mich.	F. H. Potter	Passenger Agent, G. T. Ry. Station.
Leviston, Me.	P. P. Chandler	Passenger Agent, G. T. Ry. Station.
London, Ont.	R. E. Ruse	C. P. & T. A., cor. Richmond & Dundas Sts.
Los Angeles, Cal.	W. H. Bullen	Pacific Coast Agent, 302 Wilcox Building.
Milwaukee, Wis.	Crosby Trans Co.	396 East Water Street.
Moncton, N.B.	J. H. Curran	Traveling Passenger Agent, 868 Main St.
Montreal, Que.	J. Quinlan	District Pass. Agt., Bonaventure Station.
"	W. H. Clancy	City Pass. & Tkt. Agt., 122 St. James St.
St. Clements, Mich.	Casper Cizek	C. P. & T. A., 12 South Grand St.
New York, N.Y.	F. P. Dwyer	Gen. Agt. Pass. Dept., 290 Broadway.
Niagara Falls, N.Y.	W. J. Hamilton	City Pass. and Tkt. Agt., 1 Falls Street.
Ogdensburg, N.Y.	Geo. S. Meagher	Ticket Agent, 55 State Street.
Ottawa, Ont.	Percy M. Butler	C. P. & T. A., cor. Sparks and Elgin Sts.
Peterboro, Ont.	B. A. Rose	City Passenger and Tkt. Agt., 334 George St.
Pittsburgh, Pa.	W. Robinson	Traveling Passenger Agent, 507 Park Building.
Port Huron, Mich.	E. F. Perceval	City Pass. and Tkt. Agt., 1062 Military St.
Portland, Me.	C. E. Tenny	Passenger Agent, G. T. Ry. Station.
Portland, Ore.	Dorsey B. Smith	69 Fifth Ave., Chamber of Commerce.
Quebec, Que.	Geo. H. Stott	C. P. & T. A., cor. St. Anne & DuFort Sts.
Saginaw, Mich.	Hugh E. Quirk	Passenger Agent, G. T. Ry. Station.
San Francisco, Cal.	F. W. Hooper	Gen. Agt., Pass. Dept., 399 Monadnock Bldg.
Seattle, Wash.	J. H. Burgis	Gen. Agt. Pass. Dept., First Ave. & Yesler Way.
Sherrbrooke, Que.	C. H. Foss	City Pass. and Tkt. Agt., 2 Wellington St.
South Bend, Ind.	C. A. McNutt	Passenger Agent, G. T. Ry. Station.
St. Paul, Minn.	W. J. Gilkerson	T. P. A., 400 Robert St.
Toronto, Ont.	A. E. Duff	District Passenger Agent, Union Station.
"	C. E. Hornung	C. P. & T. A., North-west cor., King & Yonge Streets.
Vancouver, B.C.	W. E. Duperow	Gen. Agt., Pass. Dept., 527 Granville St.
"	H. G. Smith	City Pass. & Tkt. Agt., 527 Granville St.
Victoria, B.C.	C. F. Earle	City Pass. and Tkt. Agt., G. T. P. Dock.
Winnipeg, Man.	W. J. Quinlan	District Pass. Agt., 260 Portage Avenue.

EUROPEAN TRAFFIC DEPARTMENT

F. C. Salter, European Traffic Manager, 17-19 Cockspur Street,
London, S.W., England.

Antwerp, Belgium	P. A. Clews	Acting Gen. Agt., 19-21 Canal des Brasseurs
Birmingham, Eng.	Morrison, Pollexfen & Blair	No. 6 Victoria Square.
Glasgow, Scotland	J. M. Walker	General Agent, 75 Union Street.
Liverpool, Eng.	Wm. Cuthbertson	General Assistant, 20 Water Street.
London, S.W., England	F. G. English	Gen. Agt., Freight Dept., 17-19 Cockspur St.
London, S.W., England	J. Herson	Pass. Agt., 17-19 Cockspur St.
London, E.C., England	P. A. Clews	City Agent, 44-45-46 Leadenhall St.
Paris, France	Pitt & Scott	Ticket Agents, 47 Rue Cambon.
Sheffield, England	J. W. Dawson	Agent, No. 7 Haymarket.

W. E. DAVIS
Passenger Traffic Manager
Montreal

G. T. BELL
Asst. Passenger Traffic Manager
Montreal

H. G. ELLIOTT
Gen'l Pass. Agent
Montreal

W. S. COOKSON
Asst. Gen'l Pass. Agent
Montreal

J. D. McDONALD
Asst. Gen'l Pass. Agent
Chicago

Page nineteen



