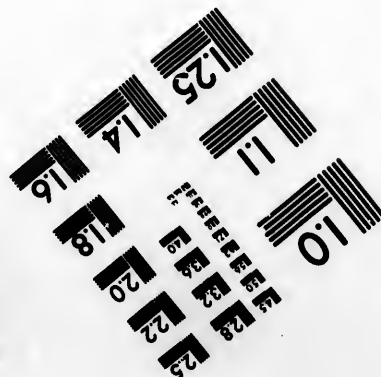
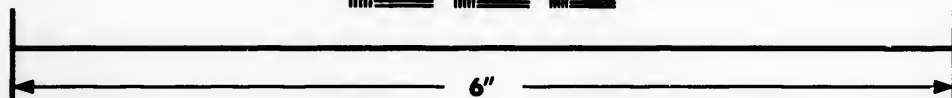
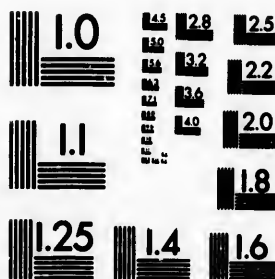


IMAGE EVALUATION TEST TARGET (MT-3)



Photographic
Sciences
Corporation

23 WEST MAIN STREET
WEBSTER, N.Y. 14580
(716) 872-4503

**CIHM/ICMH
Microfiche
Series.**

**CIHM/ICMH
Collection de
microfiches.**



Canadian Institute for Historical Microreproductions / Institut canadien de microreproductions historiques

© 1984

Technical and Bibliographic Notes/Notes techniques et bibliographiques

The Institute has attempted to obtain the best original copy available for filming. Features of this copy which may be bibliographically unique, which may alter any of the images in the reproduction, or which may significantly change the usual method of filming, are checked below.

- ☐ Coloured covers/
Couverture de couleur
- ☐ Covers damaged/
Couverture endommagée
- ☐ Covers restored and/or laminated/
Couverture restaurée et/ou pelliculée
- ☐ Cover title missing/
Le titre de couverture manque
- ☐ Coloured maps/
Cartes géographiques en couleur
- ☐ Coloured ink (i.e. other than blue or black)/
Encre de couleur (i.e. autre que bleue ou noire)
- ☐ Coloured plates and/or illustrations/
Planches et/ou illustrations en couleur
- ☐ Bound with other material/
Relié avec d'autres documents
- ☐ Tight binding may cause shadows or distortion
along interior margin/
La reliure serrée peut causer de l'ombre ou de la
distortion le long de la marge intérieure
- ☐ Blank leaves added during restoration may
appear within the text. Whenever possible, these
have been omitted from filming/
Il se peut que certaines pages blanches ajoutées
lors d'une restauration apparaissent dans le texte,
mais, lorsque cela était possible, ces pages n'ont
pas été filmées.
- ☐ Additional comments:/
Commentaires supplémentaires:

L'institut a microfilmé le meilleur exemplaire qu'il lui a été possible de se procurer. Les détails de cet exemplaire qui sont peut-être uniques du point de vue bibliographique, qui peuvent modifier une image reproduite, ou qui peuvent exiger une modification dans la méthode normale de filmage sont indiqués ci-dessous.

- ☒ Coloured pages/
Pages de couleur
- ☒ Pages damaged/
Pages endommagées
- ☐ Pages restored and/or laminated/
Pages restaurées et/ou pelliculées
- ☐ Pages discoloured, stained or foxed/
Pages décolorées, tachetées ou piquées
- ☐ Pages detached/
Pages détachées
- ☒ Showthrough/
Transparence
- ☐ Quality of print varies/
Qualité inégale de l'impression
- ☐ Includes supplementary material/
Comprend du matériel supplémentaire
- ☐ Only edition available/
Seule édition disponible
- ☐ Pages wholly or partially obscured by errata
slips, tissues, etc., have been refilmed to
ensure the best possible image/
Les pages totalement ou partiellement
obscurcies par un feuillet d'errata, une pelure,
etc., ont été filmées à nouveau de façon à
obtenir la meilleure image possible.

This item is filmed at the reduction ratio checked below/
Ce document est filmé au taux de réduction indiqué ci-dessous.

10X	14X	18X	22X	26X	30X
<input type="checkbox"/>	<input type="checkbox"/>	<input type="checkbox"/>	<input checked="" type="checkbox"/>	<input type="checkbox"/>	<input type="checkbox"/>
12X	16X	20X	24X	28X	32X

The copy filmed here has been reproduced thanks to the generosity of:

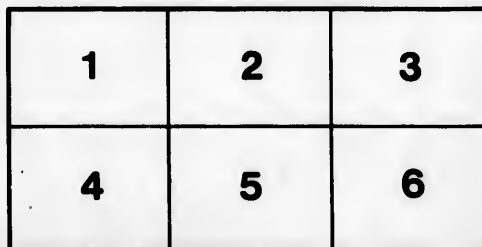
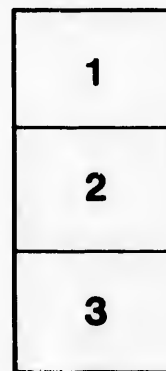
Metropolitan Toronto Library
Canadian History Department

The images appearing here are the best quality possible considering the condition and legibility of the original copy and in keeping with the filming contract specifications.

Original copies in printed paper covers are filmed beginning with the front cover and ending on the last page with a printed or illustrated impression, or the back cover when appropriate. All other original copies are filmed beginning on the first page with a printed or illustrated impression, and ending on the last page with a printed or illustrated impression.

The last recorded frame on each microfiche shall contain the symbol \rightarrow (meaning "CONTINUED"), or the symbol ∇ (meaning "END"), whichever applies.

Maps, plates, charts, etc., may be filmed at different reduction ratios. Those too large to be entirely included in one exposure are filmed beginning in the upper left hand corner, left to right and top to bottom, as many frames as required. The following diagrams illustrate the method:



L'exemplaire filmé fut reproduit grâce à la générosité de:

Metropolitan Toronto Library
Canadian History Department

Les images suivantes ont été reproduites avec le plus grand soin, compte tenu de la condition et de la netteté de l'exemplaire filmé, et en conformité avec les conditions du contrat de filmage.

Les exemplaires originaux dont la couverture en papier est imprimée sont filmés en commençant par le premier plat et en terminant soit par la dernière page qui comporte une empreinte d'impression ou d'illustration, soit par le second plat, selon le cas. Tous les autres exemplaires originaux sont filmés en commençant par la première page qui comporte une empreinte d'impression ou d'illustration et en terminant par la dernière page qui comporte une telle empreinte.

Un des symboles suivants apparaîtra sur la dernière image de chaque microfiche, selon le cas: le symbole \rightarrow signifie "A SUIVRE", le symbole ∇ signifie "FIN".

Les cartes, planches, tableaux, etc., peuvent être filmés à des taux de réduction différents. Lorsque le document est trop grand pour être reproduit en un seul cliché, il est filmé à partir de l'angle supérieur gauche, de gauche à droite, et de haut en bas, en prenant le nombre d'images nécessaire. Les diagrammes suivants illustrent la méthode.

1844. Canada Co.

DESCRIPTIVE REPORT

UPON THE

TOWNSHIP OF TINY.



The following Report upon the Township of Tiny, will be useful and interesting to Settlers and Emigrants, enabling the Settlers to send information to their friends at home, upon that particular part of Canada in which they are located ; the Emigrants to form their own opinion upon the advantages the Township offers to them for settlement. The Report was drawn up last autumn, by a very experienced and intelligent Deputy Provincial Surveyor, from actual observation, during an inspection of the Canada Company's Lands in Tiny.

REPORT.

The Township of Tiny is about seventeen miles in length, and averages about seven miles in breadth. It is bounded on the west and north by Lake Huron, on the east by Penetanguishene Bay and the Penetanguishene road, and on the south by the Township of Flos. The Village of Penetanguishene is situated in the east side of this Township, near the southern extremity of Gloucester Bay. In this Village there are four merchant's stores ; but their trade is chiefly with the Indians for fur. The buildings, with the exception of about four or five, are all of log. The inhabitants, in all, are probably about one hundred, and are chiefly composed of French Roman Catholic Canadians, a good deal intermixed with half-caste Indians, and are principally dependent on the fur trading and fishing for their support. There is a Catholic Church and clergyman in the place, and a rather large congregation is afforded between the Village and neighbouring settlement. About two miles further north or up the Bay, on the Township of Tay Side, there are Government Barracks and a military establishment, which, together with the demands of the Village, requires annually about five hundred barrels of flour, over and above the surplus produce of the surrounding farmers, which shows that agriculture is but indifferently attended to.

The southern half nearly of the Township of Tiny, is principally sandy, and timbered a good deal with pine. The northern is principally alternately sandy and clayey loam, margined largely, for the most part, along the Lake and Bay shore, with granite stone, besides being interspersed, in various other parts, with large patches of the same, of various sizes ; and so thick together as to put cultivation, in those particular places, out of the question ; but which, very surprisingly, produce good timber ; and this being the case, the stony portion will not form so much obstruction to a good settlement as might be at first view imagined, as a certain quantity of bush must needs be preserved for fuel and other purposes, under any circumstances.

There are three streams in this Township capable of propelling machinery; one running diagonally in a northeasterly direction, from near its southern boundary until it crosses the Penetanguishene road, within about six miles of the village; another running in a similar manner, from near the centre of the Township until it enters the southern extremity of Gloucester Bay; and the third stream is situated within about five miles northwesterly of the one last mentioned, and runs in an opposite direction until it enters the Nottawasaga Bay. The time may arrive when pine, which is in places pretty abundant, can be manufactured advantageously in various parts of the Township. There is a saw-mill already built on the second mentioned stream, near the Penetanguishene Village, and a grist mill is in course of being put up, which will be a great acquisition, as there is none at present within many miles of the place.

The best land is in the neighbourhood of the last mentioned stream, and is getting well settled. Indian corn is successfully cultivated in places, which speaks well for the climate; and although the soil of this Township is, to a great extent, of a light and sandy description, it is, when once cleared, easily worked, and would, under good management, produce better grain than other lands of more apparent promise. Plaster of Paris and ploughing in of clover would most likely make this land produce well.

Great quantities of fish, salmon trout, herring, &c. &c.; are, at certain seasons of the year, caught in the Bay, at the north end of this Township.

The portion of the Penetanguishene road along the easterly side, is, for about the first six miles next the village, under all circumstances, pretty well made and occupied; but the remaining five miles is a mere sleigh or waggon track, and all bush. A survey, however, has been made, not long since, by order of the Board of Works, of the road from the Holland Landing to Penetanguishene, with a view of course, to its improvement as a Provincial road; and should this object become soon accomplished, the lands of the adjoining Townships would, at the same time, become much enhanced in value.

The Population of Tiny, in the year 1842, was about 266 souls.

Acres under Cultivation in 1843,	-	-	-	-	-	643
Grist Mill,	-	-	-	-	-	1
Saw and Grist Mills,	-	-	-	-	-	2
Horses,	-	-	-	-	-	20
Oxen,	-	-	-	-	-	55
Milch Cows,	-	-	-	-	-	77
Young Cattle,	-	-	-	-	-	37

The distance from Toronto to the Township line of Tiny, is about ninety-seven miles. The direct way is by Yonge-street to Holland Landing and Barrie. Holland Landing is about thirty miles, Barrie about fifty-eight miles from Toronto. Stages and Conveyances run daily, in Summer, from Toronto to Holland Landing, from whence Steamers cross Lake Simcoe, in about five hours, to Barrie. For particulars upon the lands in Tiny, or any information upon Canada that may be required by Emigrants or Settlers, apply, (if by letter, post-paid,) at the Company's Office, at Toronto.

Canada Company's Office,

FREDERICK STREET, TORONTO, *15 June* 1844.

SIR,—I am extremely desirous of affording the most authentic, full, clear and useful information to Emigrants and others, who may require it, upon every portion of Canada. With this object, we purpose seeking the co-operation of any gentlemen of intelligence and experience, residing in every Township, who would feel an interest, in common with ourselves, in furthering this business. The annexed Report upon the Township of "Tiny," drawn up by a gentleman who was recently inspecting some of our Lands, will show the nature of the information now required upon the Township wherein you reside; but, at the same time, while we wish to make our Reports as brief and to the point as possible, we would not desire that you should consider it absolutely necessary to confine yourself within any limited bounds, at the sacrifice of suppressing what you may consider useful. At the head of the above Report, we purpose affixing a Sketch Map of that particular Township, with the Towns and Villages, Roads, Post Offices, and divisions of Lots and Concessions, &c., laid down. I enclose a Skeleton Map of your Township, that you may, as far as you may be able, and find leisure, lay down thereon the particulars detailed, as accurately as possible, and return the same to us, in order that it may be lithographed.

I am sure I need not apologise for thus soliciting your zealous assistance in a matter which will be productive of so much general advantage to this Province, and I therefore beg you will be good enough to contribute your Report and Sketch Map, filled up, as soon as your earliest convenience will permit, as I wish to have both published for gratuitous distribution, without delay.

I have the honour to be,

SIR,

Your most obedient Servant,

J. L. Walsh Esq.
Victoria

J. Middleton
Commissioner.

Chas. G.

Too Late

RECEIVED
J. L. Marsh Esq. & Co.

March Esq. & Co.
Charlottesville

Too late.

Too L.

Victoria

Victoria
28 July 1844
Receiving Mr. J. L. Marsh Esq. & Co.

Mr. J. L. Marsh Esq. & Co.
Toronto Ontario

John W. Wadsworth

