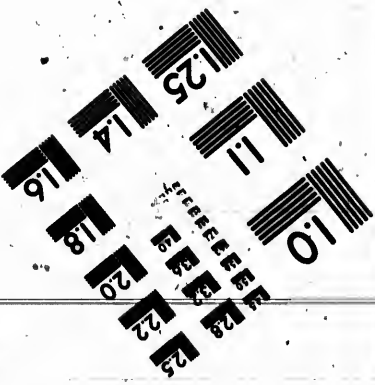
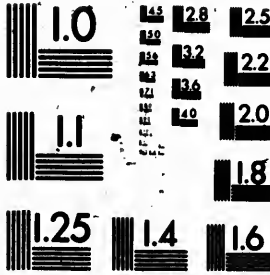


**IMAGE EVALUATION  
TEST TARGET (MT-3)**



**Photographic  
Sciences  
Corporation**

23 WEST MAIN STREET  
WEBSTER, N.Y. 14580  
8 (716) 872-4503

**CIHM  
Microfiche  
Series  
(Monographs)**

**ICMH  
Collection de  
microfiches  
(monographies)**



**Canadian Institute for Historical Microreproductions / Institut canadien de microreproductions historiques**

**© 1991**

Technical and Bibliographic Notes / Notes techniques et bibliographiques

The Institute has attempted to obtain the best original copy available for filming. Features of this copy which may be bibliographically unique, which may alter any of the images in the reproduction, or which may significantly change the usual method of filming, are checked below.

L'Institut a microfilmé le meilleur exemplaire qu'il lui a été possible de se procurer. Les détails de cet exemplaire qui sont peut-être uniques du point de vue bibliographique, qui peuvent modifier une image reproduite, ou qui peuvent exiger une modification dans la méthode normale de filmage sont indiqués ci-dessous.

- Coloured covers/  
Couverture de couleur
- Covers damaged/  
Couverture endommagée
- Covers restored and/or laminated/  
Couverture restaurée et/ou pelliculée
- Cover title missing/  
Le titre de couverture manque
- Coloured maps/  
Cartes géographiques en couleur
- Coloured ink (i.e. other than blue or black)/  
Encre de couleur (i.e. autre que bleue ou noire)
- Coloured plates and/or illustrations/  
Planches et/ou illustrations en couleur
- Bound with other material/  
Relié avec d'autres documents
- Tight binding may cause shadows or distortion  
along interior margin/  
La reliure serrée peut causer de l'ombre ou de la  
distorsion le long de la marge intérieure
- Blank leaves added during restoration may appear  
within the text. Whenever possible, these have  
been omitted from filming/  
Il se peut que certaines pages blanches ajoutées  
lors d'une restauration apparaissent dans le texte,  
mais, lorsque cela était possible, ces pages n'ont  
pas été filmées.

- Coloured pages/  
Pages de couleur
- Pages damaged/  
Pages endommagées
- Pages restored and/or laminated/  
Pages restaurées et/ou pelliculées
- Pages discoloured, stained or foxed/  
Pages décolorées, tachetées ou piquées
- Pages detached/  
Pages détachées
- Showthrough/  
Transparence
- Quality of print varies/  
Qualité inégale de l'impression
- Continuous pagination/  
Pagination continue
- Includes index(es)/  
Comprend un (des) index

Title on header taken from: /  
Le titre de l'en-tête provient:

- Title page of issue/  
Page de titre de la livraison
- Caption of issue/  
Titre de départ de la livraison
- Masthead/  
Générique (périodiques) de la livraison

Additional comments: /  
Commentaires supplémentaires:

This item is filmed at the reduction ratio checked below /  
Ce document est filmé au taux de réduction indiqué ci-dessous.

10X	14X	18X	22X	26X	30X
<input type="checkbox"/>	<input type="checkbox"/>	<input type="checkbox"/>	<input checked="" type="checkbox"/>	<input type="checkbox"/>	<input type="checkbox"/>
12X	16X	20X	24X	28X	32X

The copy filmed here has been reproduced thanks to the generosity of:

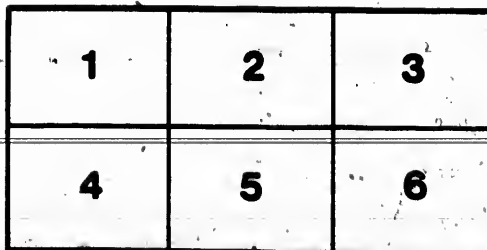
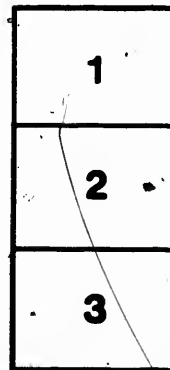
Library of the National Archives of Canada

The images appearing here are the best quality possible considering the condition and legibility of the original copy and in keeping with the filming contract specifications.

Original copies in printed paper covers are filmed beginning with the front cover and ending on the last page with a printed or illustrated impression, or the back cover when appropriate. All other original copies are filmed beginning on the first page with a printed or illustrated impression, and ending on the last page with a printed or illustrated impression.

The last recorded frame on each microfiche shall contain the symbol  $\rightarrow$  (meaning "CONTINUED"), or the symbol  $\nabla$  (meaning "END"), whichever applies.

Maps, plates, charts, etc., may be filmed at different reduction ratios. Those too large to be entirely included in one exposure are filmed beginning in the upper left hand corner, left to right and top to bottom, as many frames as required. The following diagrams illustrate the method:



L'exemplaire filmé fut reproduit grâce à la générosité de:

La bibliothèque des Archives nationales du Canada

Les images suivantes ont été reproduites avec le plus grand soin, compte tenu de la condition et de la netteté de l'exemplaire filmé, et en conformité avec les conditions du contrat de filmage.

Les exemplaires originaux dont la couverture en papier est imprimée sont filmés en commençant par le premier plat et en terminant soit par la dernière page qui comporte une empreinte d'impression ou d'illustration, soit par le second plat, selon le cas. Tous les autres exemplaires originaux sont filmés en commençant par la première page qui comporte une empreinte d'impression ou d'illustration et en terminant par la dernière page qui comporte une telle empreinte.

Un des symboles suivants apparaîtra sur la dernière image de chaque microfiche, selon le cas: le symbole  $\rightarrow$  signifie "A.SUIVRE", le symbole  $\nabla$  signifie "FIN".

Les cartes, planches, tableaux, etc., peuvent être filmés à des taux de réduction différents. Lorsque le document est trop grand pour être reproduit en un seul cliché, il est filmé à partir de l'angle supérieur gauche, de gauche à droite, et de haut en bas, en prenant le nombre d'images nécessaire. Les diagrammes suivants illustrent la méthode.

ENGLISH  
REGISTER



TILE CHEEK  
GRATES.

**RICE LEWIS & SON, TORONTO.**

LEWIS & GRAHAM, Book, Job and Music Printers, 26 and 28 Colborne Street, Toronto.

WE beg to introduce to your notice the following Engravings of

→\* ENGLISH TILE CHEEK REGISTER GRATES. \*←

We invite you to visit our warehouse, where we have a great variety of designs of **SIX** different manufacturers. Prices vary from **TEN** to **SEVENTY** dollars each, according to pattern and finish. We supply them either open-bottom, such as are in Canadian grates, or slow combustion; if the latter, the bottom is made of fire-brick and the draft is through the front bars only. Those who have used this kind in this country praise them very highly.

Every **ARCHITECT** of note who has seen these Grates likes them.

Those who used them last winter recommend them.

Customers can have any pattern or quality tile of suitable dimensions.

**THE ADVANTAGES ARE** : Greater heat for less consumption of fuel. They are complete in themselves; the **REGISTER** door closes in summer, and when not in use in winter, preventing down



**RICE LEWIS & SON, Toronto.**

3

drafts and loss of heat. The opening in the chimney breast should be 30 in. wide, 36 in. high, and 14 in. deep. These dimensions will suit for Canadian grates, equally well.

We have also PATENT GAS FIRES, made on the atmospheric principle, producing neither smoke, smell or dust; these fitted to the grate and hidden from view by a packing of indestructible fuel. The appearance is that of a coal-fire, whether in use or not, without the trouble of constantly cleaning and replenishing.

We also offer GLAZED ENCAUSTIC AND EMBOSSED TILE HEARTHES of Minton's and other best manufacturers. They must be seen to be appreciated.

**BRASS RENDERS. BRASS FIRE SETS (FIRE IRONS,)**

IN CONSIDERABLE VARIETY.

*July, 1886.*

**RICE LEWIS & SON.**



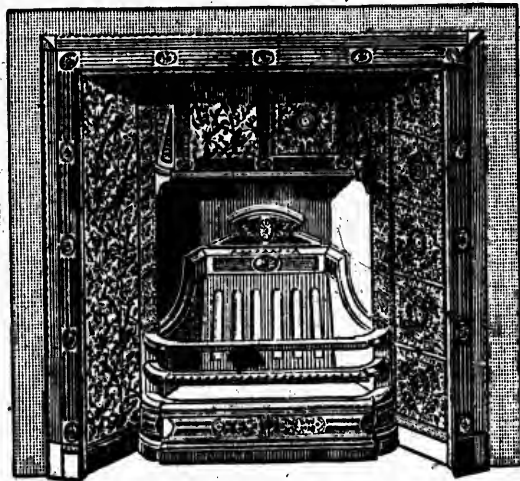
40 in.



38 in.

No. 369. Tile-Cheek Register Grate,  
40 in. wide x 38 in. high.

40 in.



38 in.

No. 395. Tile-Cheek Register Grate,  
40 in. wide x 38 in. high.



RICE LEWIS & SON, Toronto.

5

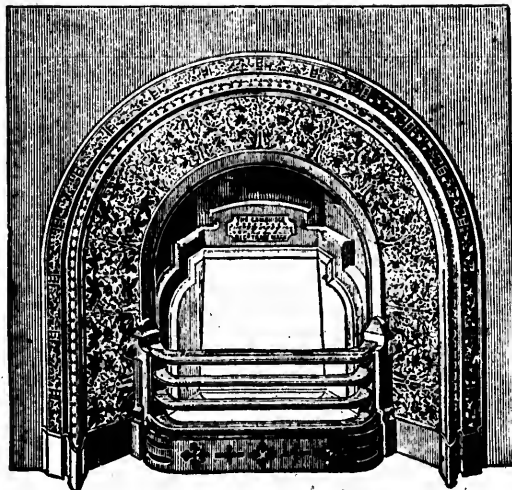
40 in.



38 in

No. 408. Tile-Cheek Register Grate,  
40 in. wide x 38 in. high.

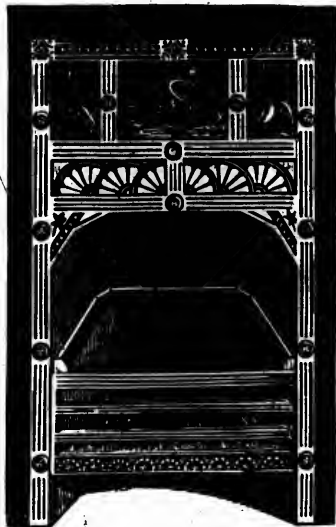
40 in.



38 in

No. 406. Tile-Cheek Register Grate,  
40 in. wide x 38 in. high.

26 in.



38 in.

No. 554. Inside Grate.

26 in.



38 in.

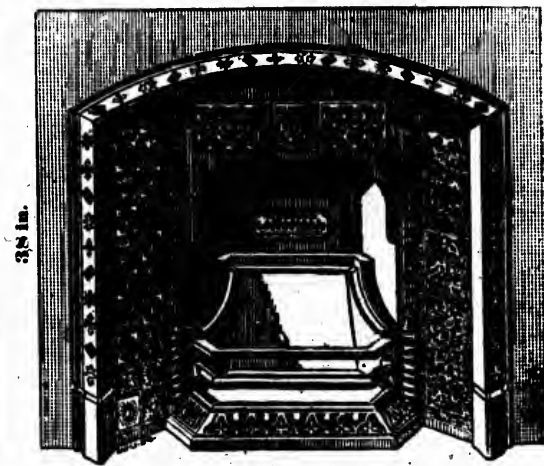
No. 552. Inside Grate.

40 in.

38 in.



No. 376. Tile-Cheek Register Grate,  
40 in. wide x 38 in. high.



No. 377. Tile-Cheek Register Grate,  
40 in. wide x 38 in. high.



Toronto Industrial Exhibition,

*SEPTEMBER, 6th to 18th, 1886.*

— GREAT • VARIETY • OF —

TILE HEARTHES, MANTELS, ETC.



