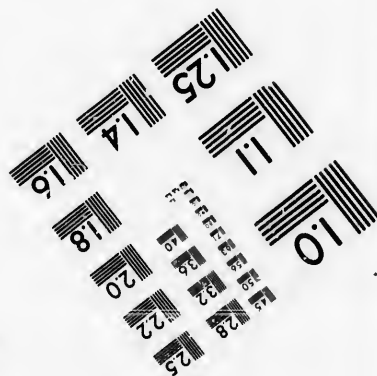
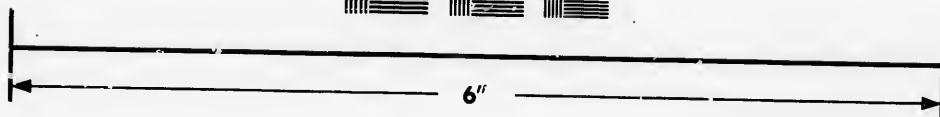
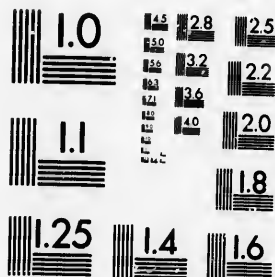


**IMAGE EVALUATION
TEST TARGET (MT-3)**



**Photographic
Sciences
Corporation**

23 WEST MAIN STREET
WEBSTER, N.Y. 14580
(716) 872-4503

Technical and Bibliographic Notes/Notes techniques et bibliographiques

The Institute has attempted to obtain the best original copy available for filming. Features of this copy which may be bibliographically unique, which may alter any of the images in the reproduction, or which may significantly change the usual method of filming, are checked below.

L'Institut a microfilmé le meilleur exemplaire qu'il lui a été possible de se procurer. Les détails de cet exemplaire qui sont peut-être uniques du point de vue bibliographique, qui peuvent modifier une image reproduite, ou qui peuvent exiger une modification dans la méthode normale de filmage sont indiqués ci-dessous.

- | | |
|--|--|
| <input type="checkbox"/> Coloured covers/
Couverture de couleur | <input type="checkbox"/> Coloured pages/
Pages de couleur |
| <input type="checkbox"/> Covers damaged/
Couverture endommagée | <input type="checkbox"/> Pages damaged/
Pages endommagées |
| <input type="checkbox"/> Covers restored and/or laminated/
Couverture restaurée et/ou pelliculée | <input type="checkbox"/> Pages restored and/or laminated/
Pages restaurées et/ou pelliculées |
| <input type="checkbox"/> Cover title missing/
Le titre de couverture manqua | <input checked="" type="checkbox"/> Pages discoloured, stained or foxed/
Pages décolorées, tachetées ou piquées |
| <input type="checkbox"/> Coloured maps/
Cartes géographiques en couleur | <input type="checkbox"/> Pages detached/
Pages détachées |
| <input type="checkbox"/> Coloured ink (i.e. other than blue or black)/
Encre de couleur (i.e. autre que bleue ou noire) | <input checked="" type="checkbox"/> Showthrough/
Transparence |
| <input type="checkbox"/> Coloured plates and/or illustrations/
Planches et/ou illustrations en couleur | <input type="checkbox"/> Quality of print varies/
Qualité inégale de l'impression |
| <input type="checkbox"/> Bound with other material/
Relié avec d'autres documents | <input type="checkbox"/> Includes supplementary material/
Comprend du matériel supplémentaire |
| <input type="checkbox"/> Tight binding may cause shadows or distortion
along interior margin/
La reliure serrée peut causer de l'ombre ou de la
distorsion le long de la marge intérieure | <input type="checkbox"/> Only edition available/
Seule édition disponible |
| <input type="checkbox"/> Blank leaves added during restoration may
appear within the text. Whenever possible, these
have been omitted from filming/
Il se peut que certaines pages blanches ajoutées
lors d'une restauration apparaissent dans le texte,
mais, lorsque cela était possible, ces pages n'ont
pas été filmées. | <input type="checkbox"/> Pages wholly or partially obscured by errata
slips, tissues, etc., have been refilmed to
ensure the best possible image/
Les pages totalement ou partiellement
obscurcies par un feuillet d'errata, une pelure,
etc., ont été filmées à nouveau de façon à
obtenir la meilleure image possible. |
| <input checked="" type="checkbox"/> Additional comments: /
Commentaires supplémentaires: | [Printed ephemera] 1 sheet (verso blank) |

This item is filmed at the reduction ratio checked below/
Ce document est filmé au taux de réduction indiqué ci-dessous.

10X	12X	14X	16X	18X	20X	22X	24X	26X	28X	30X	32X
							/				

The copy filmed here has been reproduced thanks to the generosity of:

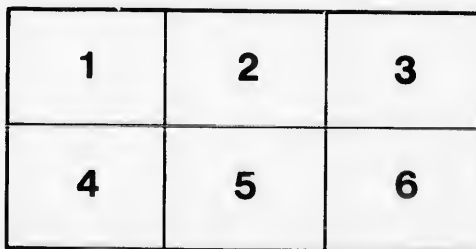
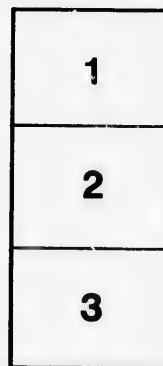
Douglas Library
Queen's University

The images appearing here are the best quality possible considering the condition and legibility of the original copy and in keeping with the filming contract specifications.

Original copies in printed paper covers are filmed beginning with the front cover and ending on the last page with a printed or illustrated impression, or the back cover when appropriate. All other original copies are filmed beginning on the first page with a printed or illustrated impression, and ending on the last page with a printed or illustrated impression.

The last recorded frame on each microfiche shall contain the symbol \rightarrow (meaning "CONTINUED"), or the symbol ∇ (meaning "END"), whichever applies.

Maps, plates, charts, etc., may be filmed at different reduction ratios. Those too large to be entirely included in one exposure are filmed beginning in the upper left hand corner, left to right and top to bottom, as many frames as required. The following diagrams illustrate the method:



L'exemplaire filmé fut reproduit grâce à la générosité de:

Douglas Library
Queen's University

Les images suivantes ont été reproduites avec le plus grand soin, compte tenu de la condition et de la netteté de l'exemplaire filmé, et en conformité avec les conditions du contrat de filmage.

Les exemplaires originaux dont la couverture en papier est imprimée sont filmés en commençant par le premier plat et en terminant soit par la dernière page qui comporte une empreinte d'impression ou d'illustration, soit par le second plat, selon le cas. Tous les autres exemplaires originaux sont filmés en commençant par la première page qui comporte une empreinte d'impression ou d'illustration et en terminant par la dernière page qui comporte une telle empreinte.

Un des symboles suivants apparaîtra sur la dernière image de chaque microfiche, selon le cas: le symbole \rightarrow signifie "A SUIVRE", le symbole ∇ signifie "FIN".

Les cartes, planches, tableaux, etc., peuvent être filmés à des taux de réduction différents. Lorsque le document est trop grand pour être reproduit en un seul cliché, il est filmé à partir de l'angle supérieur gauche, de gauche à droite, et de haut en bas, en prenant le nombre d'images nécessaire. Les diagrammes suivants illustrent la méthode.

ire
détails
es du
modifier
er une
filmage

es

errata
to

pelure.
on à



32X

Numismatic and Antiquarian Society
THE HON. JUDGE BABY, President

Committee
J. A. U. BEAUDRY, Chairman
DE LÉRY MACDONALD, Hon. Secretary
R. W. McLAUGHLAN M. DE BRAUJEU
HENRY MOIT G. H. MATHEWS

(F - 4275)
FOUNDATION OF MONTREAL

250th ANNIVERSARY

HISTORICAL EXHIBITION

57 IMPERIAL BUILDING

Montreal, 9th August, 1892.

DEAR SIR,

THE NUMISMATIC AND ANTIQUARIAN SOCIETY of Montreal purposes celebrating the 250th year of the City, by holding an Historical Exhibition in connection with the Provincial Exposition, next September.

The Society therefore asks your kind co-operation towards the success of the enterprise.

This Exhibition will consist of collections of :—

- 1°—Indian Antiquities.
- 2°—Old Views and Plans.
- 3°—Historical Documents, Autographs and Seals.
- 4°—Books relating to Canada and early Canadian imprints.
- 5°—Canadian Coins, Medals and Paper money.
- 6°—Antique Plate and China.
- 7°—Flags, Ensigns and Draperies.
- 8°—Military Arms and Accoutrements.
- 9°—Military Uniforms and Costumes of the Old Regime.
- 10°—Antique furniture and *Bric-à-brac*
- 11°—Portraits (whether miniatures, engravings, or oils, pastels, etc.,) of all persons distinguished in the annals of our country, either as ecclesiastics, statesmen, soldiers, early settlers and merchants, provided they may have figured previous to 1840.

Those possessing such historical objects, or knowing of their whereabouts, are requested to communicate with the committee, giving description of these objects and the addresses of the owners. Any historical incidents connected with these exhibits, and biographical sketches of those whose portraits are offered, will be helpful in preparing the catalogue, which it is intended to make as interesting as possible.

The Society will assume the responsibility of collecting and returning all exhibits, free of expense to the owners. An isolated building has been set apart for the Exhibition, a large safe provided, and the arrangements for protection from all risks are most complete. The exhibits will be insured and handled with the greatest care, under the immediate supervision of members of the committee.

The Society looks forward to awakening the interest of our people in their history, and further hopes, in bringing so many articles together, to show what can be done in the way of a permanent Historical Museum at Montreal.

All objects should be addressed to Mr. J. A. U. Beaudry, Chairman of the committee, 57, Imperial Building, 107, St. James Street, Montreal.

A. C. de Léry Macdonald,

Hon. Secretary.



N.B. — Exhibitors of large paintings are advised to send them without frames, and as soon as possible.

1892a
1

