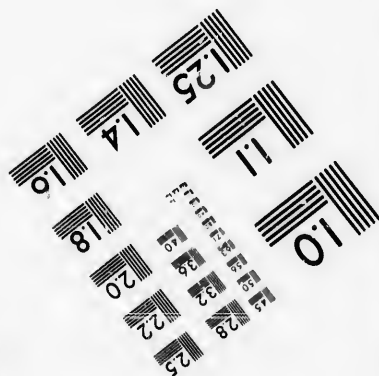
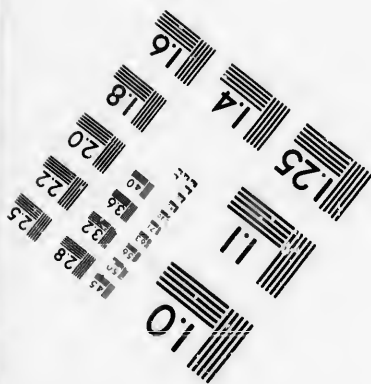
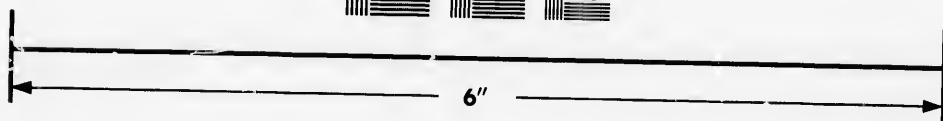
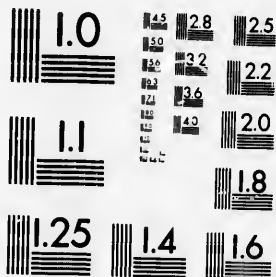


**IMAGE EVALUATION
TEST TARGET (MT-3)**



**Photographic
Sciences
Corporation**

23 WEST MAIN STREET
WEBSTER, N.Y. 14580
(716) 872-4503



**CIHM/ICMH
Microfiche
Series.**

**CIHM/ICMH
Collection de
microfiches.**



Canadian Institute for Historical Microreproductions / Institut canadien de microreproductions historiques



© 1986

Technical and Bibliographic Notes/Notes techniques et bibliographiques

The Institute has attempted to obtain the best original copy available for filming. Features of this copy which may be bibliographically unique, which may alter any of the images in the reproduction, or which may significantly change the usual method of filming, are checked below.

L'Institut a microfilmé le meilleur exemplaire qu'il lui a été possible de se procurer. Les détails de cet exemplaire qui sont peut-être uniques du point de vue bibliographique, qui peuvent modifier une image reproduite, ou qui peuvent exiger une modification dans la méthode normale de filmage sont indiqués ci-dessous.

- | | |
|---|---|
| <input type="checkbox"/> Coloured covers/
Couverture de couleur | <input type="checkbox"/> Coloured pages/
Pages de couleur |
| <input type="checkbox"/> Covers damaged/
Couverture endommagée | <input type="checkbox"/> Pages damaged/
Pages endommagées |
| <input type="checkbox"/> Covers restored and/or laminated/
Couverture restaurée et/ou pelliculée | <input type="checkbox"/> Pages restored and/or laminated/
Pages restaurées et/ou pelliculées |
| <input type="checkbox"/> Cover title missing/
Le titre de couverture manque | <input checked="" type="checkbox"/> Pages discoloured, stained or foxed/
Pages décolorées, tachetées ou piquées |
| <input type="checkbox"/> Coloured maps/
Cartes géographiques en couleur | <input type="checkbox"/> Pages detached/
Pages détachées |
| <input type="checkbox"/> Coloured ink (i.e. other than blue or black)/
Encre de couleur (i.e. autre que bleue ou noire) | <input checked="" type="checkbox"/> Showthrough/
Transparence |
| <input type="checkbox"/> Coloured plates and/or illustrations/
Planches et/ou illustrations en couleur | <input type="checkbox"/> Quality of print varies/
Qualité inégale de l'impression |
| <input type="checkbox"/> Bound with other material/
Relié avec d'autres documents | <input type="checkbox"/> Includes supplementary material/
Comprend du matériel supplémentaire |
| <input type="checkbox"/> Tight binding may cause shadows or distortion along interior margin/
La reliure serrée peut causer de l'ombre ou de la distorsion le long de la marge intérieure | <input type="checkbox"/> Only edition available/
Seule édition disponible |
| <input type="checkbox"/> Blank leaves added during restoration may appear within the text. Whenever possible, these have been omitted from filming/
Il se peut que certaines pages blanches ajoutées lors d'une restauration apparaissent dans le texte, mais, lorsque cela était possible, ces pages n'ont pas été filmées. | <input type="checkbox"/> Pages wholly or partially obscured by errata slips, tissues, etc., have been refilmed to ensure the best possible image/
Les pages totalement ou partiellement obscurcies par un feuillet d'errata, une pelure, etc., ont été filmées à nouveau de façon à obtenir la meilleure image possible. |
- Additional comments: [Printed ephemera] [4] p. There are some creases in the middle of the pages.
Commentaires supplémentaires:

This item is filmed at the reduction ratio checked below/
Ce document est filmé au taux de réduction indiqué ci-dessous.

10X	12X	14X	16X	18X	20X	22X	24X	26X	28X	30X	32X
<input type="checkbox"/>	<input type="checkbox"/>	<input type="checkbox"/>	<input type="checkbox"/>	<input type="checkbox"/>	<input type="checkbox"/>	<input type="checkbox"/>	<input type="checkbox"/>	<input checked="" type="checkbox"/>	<input type="checkbox"/>	<input type="checkbox"/>	<input type="checkbox"/>

The copy filmed here has been reproduced thanks to the generosity of:

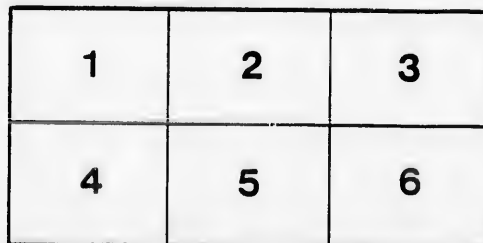
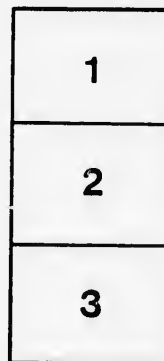
D. B. Weldon Library
University of Western Ontario
(Regional History Room)

The images appearing here are the best quality possible considering the condition and legibility of the original copy and in keeping with the filming contract specifications.

Original copies in printed paper covers are filmed beginning with the front cover and ending on the last page with a printed or illustrated impression, or the back cover when appropriate. All other original copies are filmed beginning on the first page with a printed or illustrated impression, and ending on the last page with a printed or illustrated impression.

The last recorded frame on each microfiche shall contain the symbol \rightarrow (meaning "CONTINUED"), or the symbol ∇ (meaning "END"), whichever applies.

Maps, plates, charts, etc., may be filmed at different reduction ratios. Those too large to be entirely included in one exposure are filmed beginning in the upper left hand corner, left to right and top to bottom, as many frames as required. The following diagrams illustrate the method:



L'exemplaire filmé fut reproduit grâce à la générosité de:

D. B. Weldon Library
University of Western Ontario
(Regional History Room)

Les images suivantes ont été reproduites avec le plus grand soin, compte tenu de la condition et de la netteté de l'exemplaire filmé, et en conformité avec les conditions du contrat de filmage.

Les exemplaires originaux dont la couverture en papier est imprimée sont filmés en commençant par le premier plat et en terminant soit par la dernière page qui comporte une empreinte d'impression ou d'illustration, soit par le second plat, selon le cas. Tous les autres exemplaires originaux sont filmés en commençant par la première page qui comporte une empreinte d'impression ou d'illustration et en terminant par la dernière page qui comporte une telle empreinte.

Un des symboles suivants apparaîtra sur la dernière image de chaque microfiche, selon le cas: le symbole \rightarrow signifie "A SUIVRE", le symbole ∇ signifie "FIN".

Les cartes, planches, tableaux, etc., peuvent être filmés à des taux de réduction différents. Lorsque le document est trop grand pour être reproduit en un seul cliché, il est filmé à partir de l'angle supérieur gauche, de gauche à droite, et de haut en bas, en prenant le nombre d'images nécessaire. Les diagrammes suivants illustrent la méthode.

If you see it in the "London Free Press" it is so.

READ AND REFLECT.

NOTICE TO OUR PATRONS.—If the individual members of an audience would stop to think for just an instant, they would undoubtedly appreciate the fact that the habit of rising from one's seat and leaving the theatre before the curtain falls, is a most annoying one, and one that should be stopped. We therefore beg our audiences to kindly remain in their seats until the close of the performance.

Evenings—doors open at 7:30; curtain rises at 8:15 sharp. Matinee—doors open at 2:30; curtain rises at 2:50 sharp.

The plan of the House will be kept at the confectionery parlors of Mr. Hewitt Fysh, King and Richmond Streets, corner of the Opera House building, where all seats may be reserved up till seven o'clock on the evening of performance.

Plan opens for each attraction two days in advance.



Seats can be secured by mail, telegram or telephone. Telephone 732.

Physicians are requested to register at the Box Office, leaving seat number, as this will enable Ushers to find them if called for, without disturbing the audience.

Carriages can be ordered at the Box Office or of the Chief Usher.

Please report to the management any inattention on the part of the employees.

Overcoats, packages and umbrellas checked for a small charge.

For all lost articles apply at Box Office.

Opera Glasses can be rented by applying to Ushers or at Box Office.

It is strange, but there is a class of people that seem to take an intense delight in spattering the floor with tobacco juice and in being inebriated and using profane language. These people should know as soon that the courts authorize their immediate expulsion, should the management see fit to exercise its rights.

BETWEEN the Acts, and after the Opera is over go to the

OPERA + CIGAR

+ STORE +

For Cigars, Cigarettes, Etc.
LOUIS RISK.

W. T. STRONG,

Dispensing +

+ + Chemist

184 Dundas Street,
LONDON - - - ONTARIO.



LEADS THEM ALL.

PRICES WILL TELL.

Furs! Furs! Furs!
IN ALL THE LATEST STYLES.

Hats! Hats! Hats!
Latest New York and English Styles.

The Cheapest House in the City.
A Pleasure to Show Goods.

400 Richmond St., LONDON, ONT.

C. J. WHITNEY LESSEE AND MANAGER.
A. E. ROOTE LOCAL MANAGER.
FRED. L. EVANS DIRECTOR OF ORCHESTRA.
GUS. SCHABACKER STAGE MANAGER.
JAMES LAMB CHIEF USHER.

Wednesday Ev'g, Nov. 23rd, 1892.

+ PROGRAMME. +

Robin Hood Opera Company

(BARNABEE, KARL & MACDONALD, Proprietors.)

—PRESENTING—

DeKOVEN & SMITH'S FAMOUS OPERA,

ROBIN HOOD

(Programme continued on Page 3.)

J. S. ASHPLANT. Telephone 881. J. S. BROWN.

FOOTWEAR

LADIES' FINE AMERICAN Overshoes
Light as a feather in narrow widths.

RUBBERS, neat and pretty.
Dress Shoes In all colors and styles, for LADIES.

—SOLD BY—
ASHPLANT & BROWN

Winners of FIRST PRIZE and SILVER MEDAL, 1892.

OUR Men's Shoes ARE JEMS.

CENTRAL SHOE STORE.

145 Dundas Street, (D. Regan's old stand.)

HE'S ALL RIGHT.

There is no better time than now to select your Holiday Presents. Make up your mind to get something nice in our line this year for yourself and friends. What is Home without a Musical Instrument? You can buy everything Musical, of the best quality, at "Colwell's Popular Music House," 171 Dundas Street. We make a specialty of the genuine Heintzman Pianos, Goderich Organs and White Sewing Machines; but can supply any others made. We also have an endless variety of small Musical Instruments, Strings, Fittings, Music Books, Music Holders, etc. We are offering reduced prices in all departments, and guarantee everything we sell. Telephone 97 or 87.

CHAS. F. COLWELL,

Official Issuer of Marriage Licenses

The only place in the City to get the latest

SCARFS.



* The Furnisher.

A MAN

Wants to see you Between Acts

—AT—
Jerry McDonald's

Across the Road

181 KING STREET.

Look out for the "London Free Press" on all early morning trains.

Burns

* * **SAYS**
That the D B. Sag Suit
Will lead this Fall.

AND HE IS RIGHT.

GREAT PRIZE SALE

Every Cash Customer buying One Dollar's
worth or more of

WALL PAPER,

WINDOW SHADES,

CORNICE POLES,

ARTISTS' MATERIALS,

PICTURE FRAMES,

PICTURES,

ETC., ETC., ETC.

Stands the chance of securing a Prize worth from \$1.00
to \$20.00 according to amount of purchase.

E. N. HUNT,
190 DUNDAS ST., LONDON.

Attractions Booked.

A partial list of the attractions that will follow in the
course of the season includes—

Rhea; Conreid; The Bostonians in Robin Hood; Guy
Brothers' Minstrels; Ramsey Morris; Potter of Texas;
Maud Granger; Theodore Thomas' Orchestra; Private
Secretary; Robert Mantell; C. B. Hanford, in a grand
spectacular production of Julius Caesar; Good Old Times;
Stowaway; Gus Hills' World of Novelties; Rosina Vokes;
Tuxedo; After Dark; Jerry; James O'Neill; Margaret
Mather; T. E. Shea; Katharine Rober; Ezra Kendall;
Lillian Lewis; Tar and Tartar; and many others of the
strongest attractions on the road.

NEXT ATTRACTION:
Friday, Nov. 25th,
Guy Brothers' Elite Minstrels.

REASONS

WHY Guy Brothers' Minstrels Have Success.

Because—The Show is Good.
Because—It is Refined.
Because—They don't Deceive.
Because—It is no Humbug.
Because—Ladies can Attend.
Because—They do as Advertised.
Because—The Parade is Fine.
Because—They are Clever.
Because—The Dancing is Great.
Because—The Singing is Excellent.
Because—The Orchestra is Superb.
Because—They are Known.
Because—The Acrobats are Wonderful.

These are Good Reasons

GO AND SEE THEM!

Prices, 25, 50 and 75c.

Plan Opens To-morrow Morning.

Marshall's * Mammoth * Livery

IS THE LARGEST AND THE OLDEST
ESTABLISHMENT IN THE CITY.

DOES THE LEADING BUSINESS IN

Carriages, Cabs, Coupes, *
* Victorias, Busses, Etc.

Every kind of Conveyance can be had there on the
shortest notice, by Telephone No. 436.

JAS. S. MARSHALL, Proprietor.

Dundas Street.

London, Ont.

The Elegant Furniture

You see on the stage this evening,
is from the establishment of

JAMES KILGOUR,

—MANUFACTURER OF—

Fine Parlor Suites, Easy Chairs,

and Turkish Lounges, made to order only.

353 RICHMOND STREET.

For Fashionable WELL MADE SUITS

... CALL ON ...

Burns

The Tailor,

Dundas Street.

Artistic * Floral * Design

EITHER WEDDING, PRESENTATION, DINNER TABLE, OR FUNERAL.

GO TO **DILLOWAY,**

The Leading Florist.

248 Dundas Street.

Choicest Cut Flowers Always on Hand.

TELEPHONE 557.

If you see it in the "London Free Press" it is so.

◀ AFTER THE PERFORMANCE ▶

STOP AT

Harry McKenna's,

—FOR—

Choice Havana Cigars & *
* * Tobacco Sundries.

225 Dundas Street.

Always Open After Performance.

SMITH BROS.

Plumbers,
Steam and Gas Fitters.

ESTIMATES FURNISHED ON APPLICATION.

All Work Warranted. Terms Moderate.

378 RICHMOND STREET.
(Opposite Masonic Temple.)

Telephone No. 538.

THE TECUMSEH,
London, Ontario.



Leading Hotel of Western Ontario.

Large Sample Rooms Free of Charge.
Baggage and Passenger Elevator.

Only one Block from the Grand Opera House.

C. W. DAVIS,
PROPRIETOR.

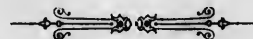
White · Sulphur · Springs · Baths
FAMOUS HEALTH RESORT.
The Saratoga of Canada.
IN CONNECTION WITH THE HOTEL.

Great Attraction to Visitors Seeking Health.
C. W. DAVIS, Treasurer. A. D. HOLMAN, Manager.

THE LATEST ENGLISH *
Collars, · Cuffs · and · Shirts.
ALL SIZES ALWAYS IN STOCK.

Burns

DUNDAS STREET.



GAST OF CHARACTERS.

Sheriff of Nottingham	-	Hallyn Mostyn
Robin Hood,	-	J. A. Stille
Will Scarlet,	-	Frank Pearson
Little John,	-	Edwin Isham
Friar Tuck,	-	A. E. Nichols
Guy of Gisborne,	-	Edward D. Palfrey
Maid Marian	-	Ethel Balch
Allan-a-Dale	-	Mary Palmer
Dame Durden	-	Clara Wisdom
Annabel	-	Maud McIntyre



(Programme Continued on Page 4).

E. Beltz, 144 Dundas St.

LEADING FASHIONABLE HATTER & FURRIER.

FINE QUALITY GOLD MEDAL

HATS. | FURS.

THE LEADING JEWELRY HOUSE
OF LONDON,

—FOR—

Diamonds, Watches, ·
· · and Fine Jewelry.

OPERA GLASSES FOR RENT.

THOS. GILLEAN,
402 Richmond Street.

Issuer of Marriage Licenses.

For Fine Finished Artistic Photos

GO TO

Westlake's *
* Famous Studio
201 Dundas Street.

Get the Latest Novelties.
Photo Etchings and Bristol Finish.
STUDIO ALL ON GROUND FLOOR.
City Views can be had. Phone 571.

Wallace's Dining Hall
AND CONFECTIONERY.

354 Richmond Street.

Lunches at all hours.
Hot Tea and Coffee.
Oysters in every style.
Choice Cakes,
Candies, Etc.

GIVE US A CALL.

OFFICE RESTAURANT

Opposite the Masonic Temple, Richmond St.

CHOICE WINES,
LIQUORS, ALES,
CIGARS, ETC.

Restaurant on the European Plan.
OYSTERS IN EVERY STYLE.

D. SARE,
Proprietor.

Look out for the "London Free Press" on all early morning Trains.

VASELINE.

EVERYBODY knows the great value of this remedy in the household, but everybody does not know that the imitations of it, which some second class druggists disastorably point off on their customers, have little or no value. What should be understood by the public is, that it is not a mere question of comparative value between "Vaseline" and the imitations, but that the imitations do not effect the wonderful healing results of the world renowned "Vaseline," and that they are not the same thing nor made in the same way. Besides this, many of the imitations are harmful, irritant and not safe to use, while true Vaseline is perfectly harmless.

Perfect safety therefore lies in buying only original packages put up by and marked with our name.

CHESBROUGH M'FG CO.

LADIES' TAILOR-MADE COSTUMES & RIDING HABITS.

Burns

154 Dundas Street.

W. T. STRONG,

Dispensing *

* * Chemist

184 Dundas Street,

LONDON, - - - ONTARIO.

FLOWERS ❀

—FOR—

OPERA OR BALL

—AT—

GAMMAGE'S

Duffield Block, 213 Dundas Street.

FRESH EVERY DAY.

TELEPHONE 807.



SYNOPSIS.

ACT I.—Market Square, Nottingham, England.

ACT II.—Sherwood Forest.

ACT III.—Courtyard of the Sheriff's House.

Parisian Steam Laundry

73 and 75 DUNDAS ST.



Laundry work transferred free of charge to and from Toronto, Hamilton, Brantford, Woodstock, Stratford, Guelph, London, St. Thomas, Chatham, Windsor and Samia.

J. K. SPRY, Manager.

COMING)

Bamsay Morris's Comedy Company

(FROM NEW YORK)

PRESENTING

JOSEPH

One of the most brilliant comedy successes of recent years.

FUNNIER THAN "THE PRIVATE SECRETARY."

OVER 500 NIGHTS
IN PARIS.

THE PLAYERS INCLUDE

MESSRS. JOHN GLENDINNING

GEORGE GIDDENS

EDGAR NORTON

REUB FAX

HARRY GWYNETTE

JAMESON LEE FINNEY

HARRY PEARSON

MISS ELSIE de WOLFE

MRS. E. J. PHILLIPS

MISS MARY PENFIELD

MISS HELEN STOCKWELL

AND OTHERS.

JOHN J. COLLINS, - Business Manager.

Chas. Edward Hamilton..... Business Manager
Frank W. Conant..... Acting Manager
Herman Perlet..... Musical Director
Fred. Dixon..... Stage Director



Opera Glasses can be rented by applying to Ushers or at Box Office.

Between the Acts

—GO TO—

FYSH'S

—FOR—

Ice Cream, Soda Water, * * *

Fine Confectionery, Etc.

Cor. Richmond and King Streets.

(Opera House Building.)

Branch at 220 Dundas Street.

