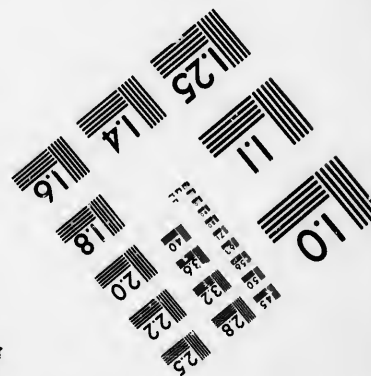
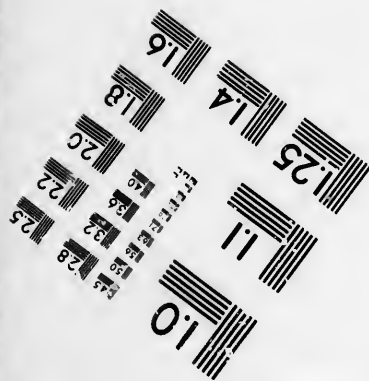
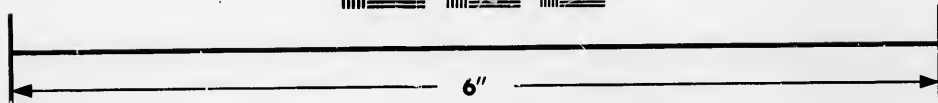
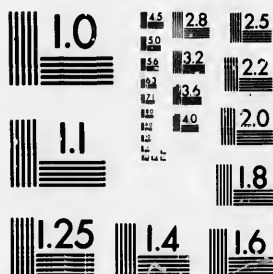


**IMAGE EVALUATION  
TEST TARGET (MT-3)**



**Photographic  
Sciences  
Corporation**

23 WEST MAIN STREET  
WEBSTER, N.Y. 14580  
(716) 872-4503

**CIHM/ICMH  
Microfiche  
Series.**

**CIHM/ICMH  
Collection de  
microfiches.**



**Canadian Institute for Historical Microreproductions / Institut canadien de microreproductions historiques**

**© 1985**



The copy filmed here has been reproduced thanks to the generosity of:

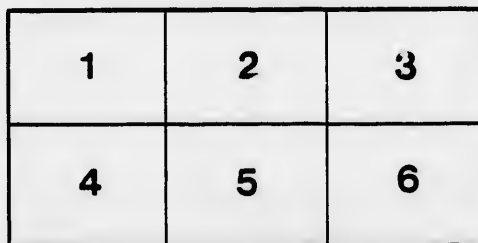
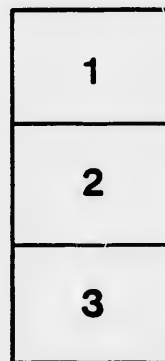
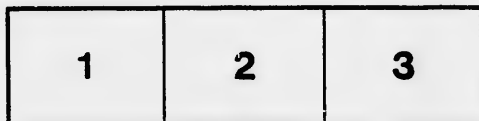
D. B. Weldon Library  
University of Western Ontario  
(Regional History Room)

The images appearing here are the best quality possible considering the condition and legibility of the original copy and in keeping with the filming contract specifications.

Original copies in printed paper covers are filmed beginning with the front cover and ending on the last page with a printed or illustrated impression, or the back cover when appropriate. All other original copies are filmed beginning on the first page with a printed or illustrated impression, and ending on the last page with a printed or illustrated impression.

The last recorded frame on each microfiche shall contain the symbol  $\rightarrow$  (meaning "CONTINUED"), or the symbol  $\nabla$  (meaning "END"), whichever applies.

Maps, plates, charts, etc., may be filmed at different reduction ratios. Those too large to be entirely included in one exposure are filmed beginning in the upper left hand corner, left to right and top to bottom, as many frames as required. The following diagrams illustrate the method:



L'exemplaire filmé fut reproduit grâce à la générosité de:

D. B. Weldon Library  
University of Western Ontario  
(Regional History Room)

Les images suivantes ont été reproduites avec le plus grand soin, compte tenu de la condition et de la netteté de l'exemplaire filmé, et en conformité avec les conditions du contrat de filmage.

Les exemplaires originaux dont la couverture en papier est imprimée sont filmés en commençant par le premier plat et en terminant soit par la dernière page qui comporte une empreinte d'impression ou d'illustration, soit par le second plat, selon le cas. Tous les autres exemplaires originaux sont filmés en commençant par la première page qui comporte une empreinte d'impression ou d'illustration et en terminant par la dernière page qui comporte une telle empreinte.

Un des symboles suivants apparaîtra sur la dernière image de chaque microfiche, selon le cas: le symbole  $\rightarrow$  signifie "A SUIVRE", le symbole  $\nabla$  signifie "FIN".

Les cartes, planches, tableaux, etc., peuvent être filmés à des taux de réduction différents. Lorsque le document est trop grand pour être reproduit en un seul cliché, il est filmé à partir de l'angle supérieur gauche, de gauche à droite, et de haut en bas, en prenant le nombre d'images nécessaire. Les diagrammes suivants illustrent la méthode.

# PROGRAMME



# STRATFORD..... RACE MEETING

---

June 8, 9 and 10, 1897

---

## FIRST DAY.

2:50 Pace,	-	-	Purse, \$500 00
2:28 Trot,	-	-	" 500 00
2:18 Pace,	-	-	" 500 00

## SECOND DAY.

2:23 Trot,	-	-	Purse, \$500 00
2:24 Pace,	-	-	" 500 00
2:18 Trot,	-	-	" 500 00

## THIRD DAY.

2:10 Trot and Pace,	-	-	Purse, \$500 00
2:50 Trot,	-	-	" 500 00
2:29 Pace,	-	-	" 500 00



**CONDITIONS.**

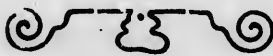
---

**E**NTRIES close June 1st and horses eligible on that day. Five to enter and four to start. Entrance 5% of purse and 5% additional from all money winners. Money divided 50, 25, 15 and 10 per cent. No horse entitled to more than first money. Classes subject to change up to the first day of May, number of races and purses being maintained. Old distance to govern. Usual weather clause. Right to change the order of races reserved. The National Trotting Association rules to govern.

Address all correspondence to

**T. S. TOBIN,**

**SECRETARY,  
STRATFORD, ONT.**



# SECRETARY STRATFORD TURF ASSOCIATION

I make the Following Entries in your Races to be held June 8, 9 and 10

<i>CLASS.</i>	<i>NAME OF HORSE.</i>	<i>Color and Sex.</i>	<i>NAME OF SIRE.</i>	

Owner .....

Entered by.....

P.O. Address .....

Driver .....

P.O. Address .....

and

Colors .....

ATION, Stratford, Ontario.

9 and 10, 1897:

NAME OF DAM.	SIRE OF DAM.

d by.....  
dress.....

## Dates of Canadian Circuit.

GUELPH,  
May 31 and June 1.  
NEW HAMBURG,  
June 3 and 4.  
**Stratford,**  
June 8, 9 and 10.  
PORT HURON, MICH.,  
June 15, 16, 17 and 18.  
AYLMER,  
June 22, 23 and 24.  
ST. THOMAS,  
June 29, 30 and July 1.  
WINDSOR,  
July 5, 6, 7, 8, 9, 10.  
PETROLIA,  
July 13, 14 and 15.  
WINGHAM,  
July 20, 21 and 22.  
BRANTFORD,  
July 27, 28 and 29.  
TILSONBURG,  
August 3 and 4.  
WELLAND,  
August 10 and 11.  
PORT HURON, MICH.,  
August 17 to 20.  
ORANGEVILLE,  
August 24 and 25.  
COBOURG,  
Aug. 31 and Sept. 1.



CANADA.

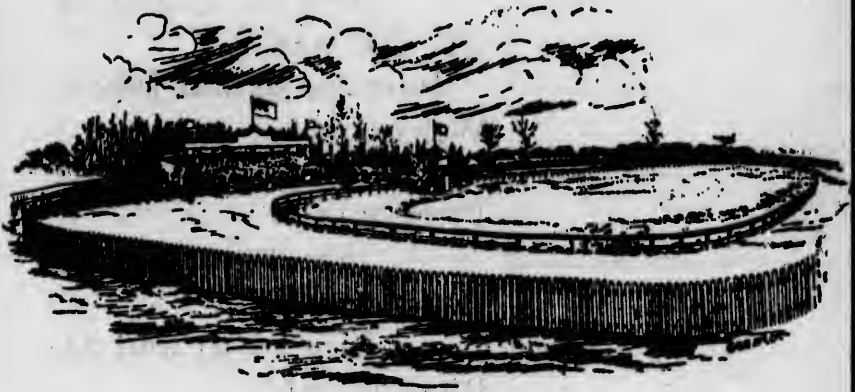
# The Stratford

(Ontario)

## Turf Association



Possesses the best Half Mile Track in Canada. Track Record of 2:16 made 6th June, 1894, in 2:50 Pace, being the first race ever held on the track.



**\$4,500.00**

Offered in Purses at June Meeting,  
1897.



**5 PER CENT. ENTRANCE.**

---

